



Week 1 & Week 2 Forecast for the Philippines using GEFS Model



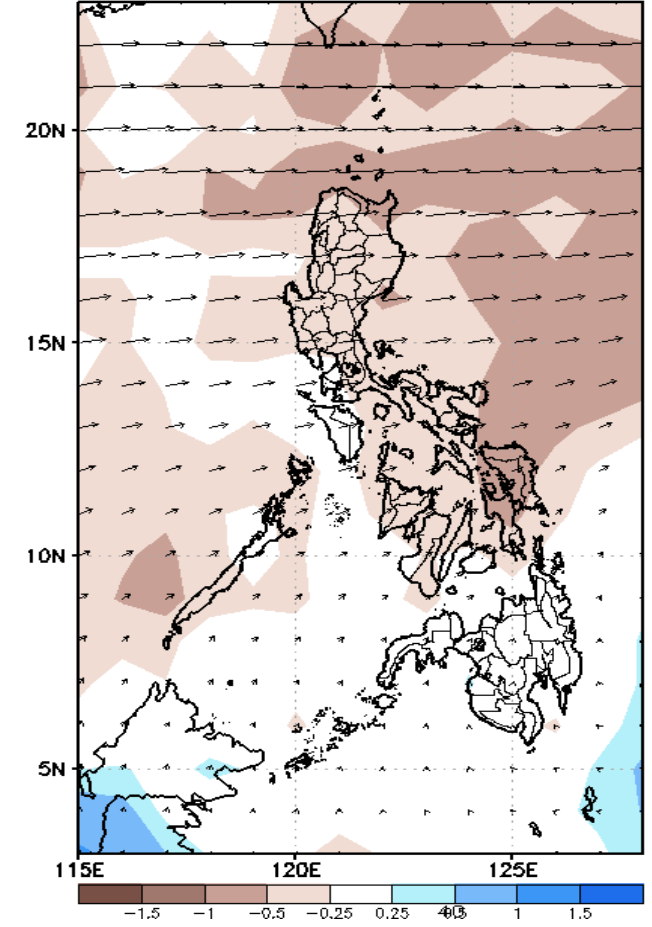
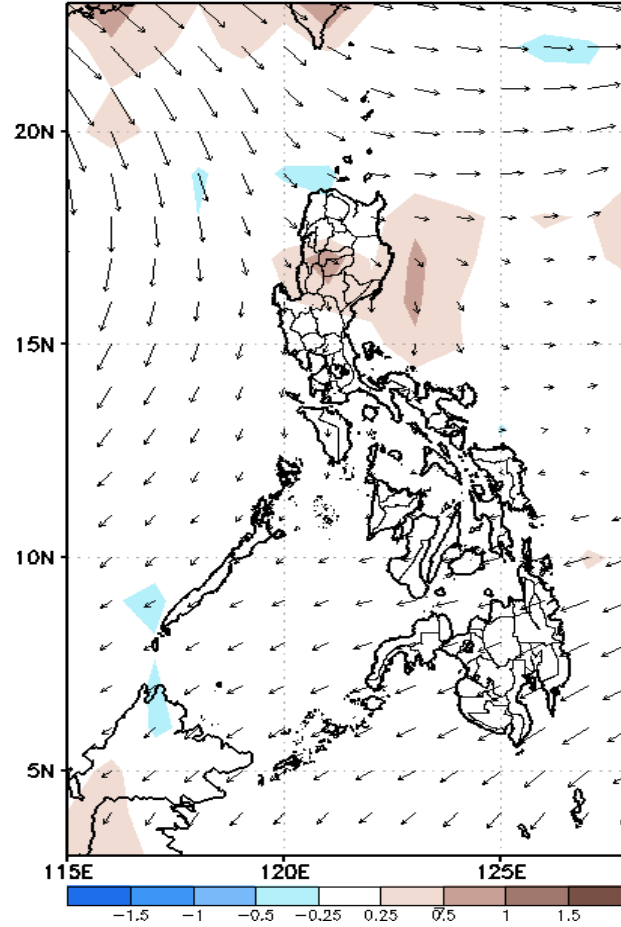
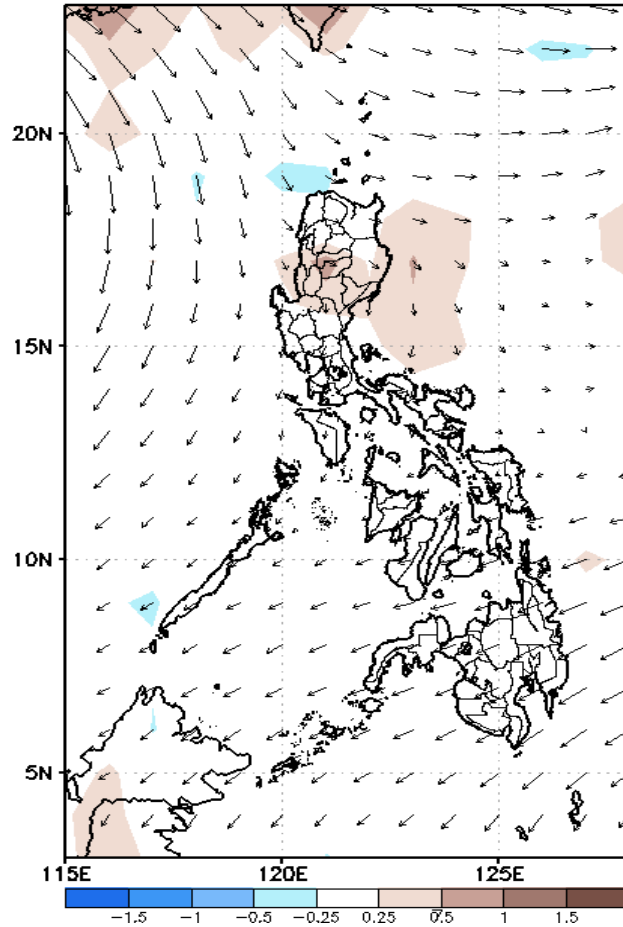
GEFS Week-1 Forecasts: Wind Anomaly Forecast

Week 1: Mar 8-14, 2023

GEFS Week-1 850-hPa Divergence and Wind Anom
Valid: 20230308 - 20230314

GEFS Week-1 700-hPa Divergence and Wind Anom
Valid: 20230308 - 20230314

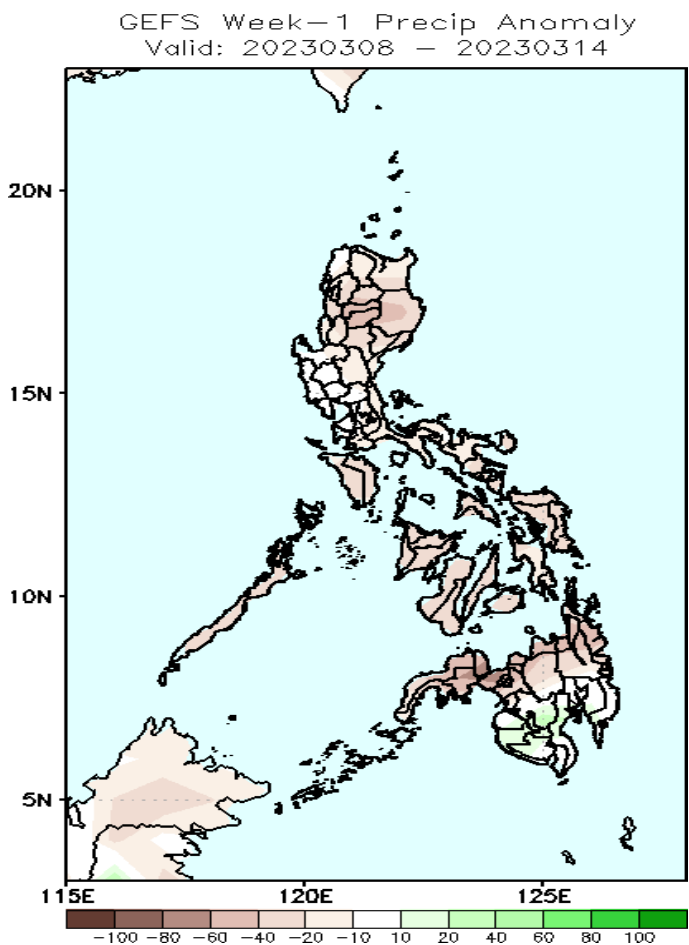
GEFS Week-1 200-hPa Divergence and Wind Anom
Valid: 20230308 - 20230314



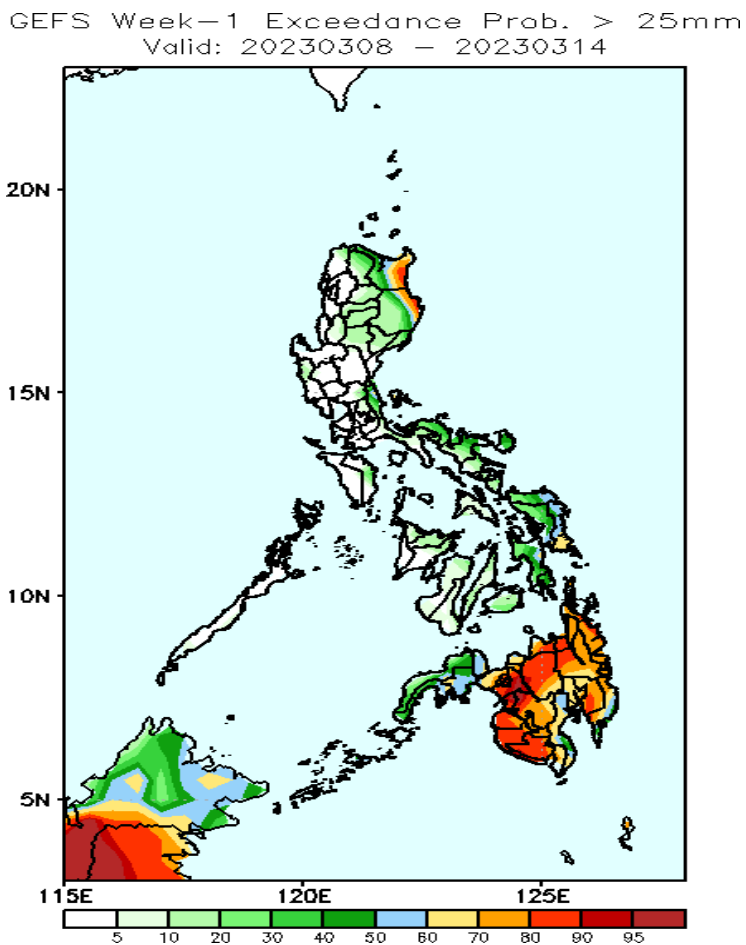
Easterlies is forecasted to affect most parts of the country during the forecast period.

Precipitation Anomaly and Exceedance Probability > 25/50 mm

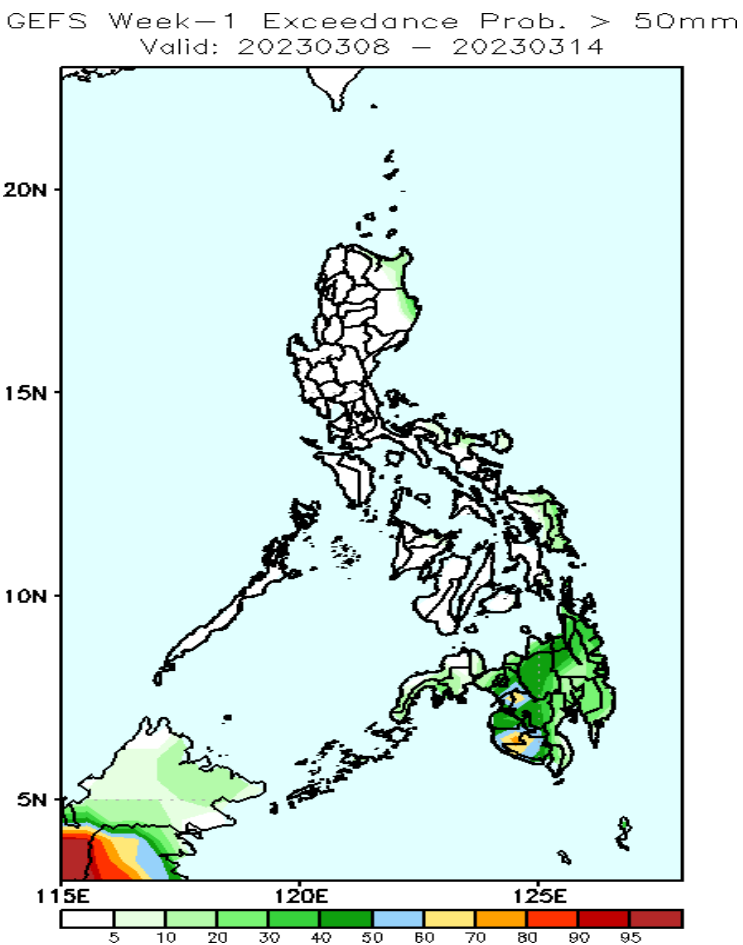
Week 1: Mar 8-14, 2023



Rainfall deficit of 20-60mm is expected in most parts of the country during the forecast period.



High to a very high probability of rainfall exceeding 25mm in Mindanao and Eastern Visayas while low to moderate chance over the rest of the country.



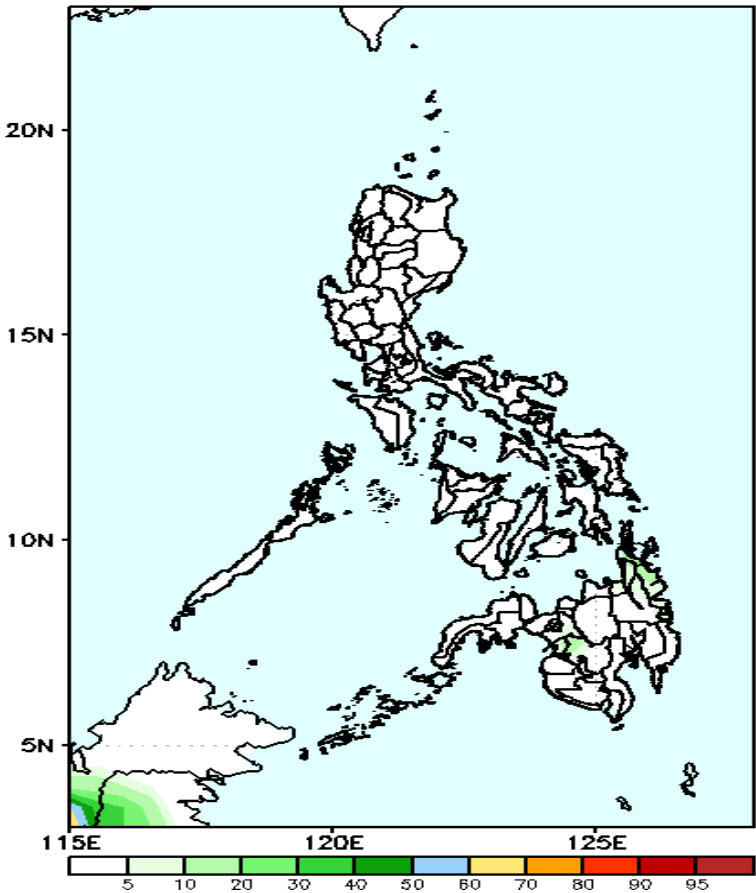
Moderate to a high probability of rainfall exceeding 50mm in Mindanao and Eastern Visayas while low chance over the rest of the country.



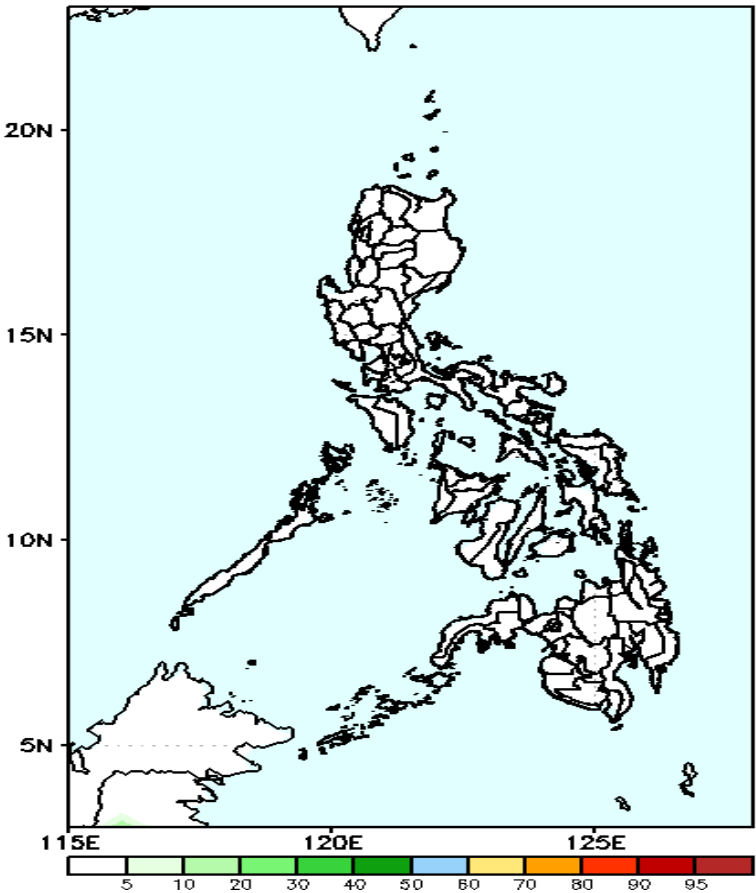
Exceedance Probability > 100/150/200 mm

Week 1: Mar 8-14, 2023

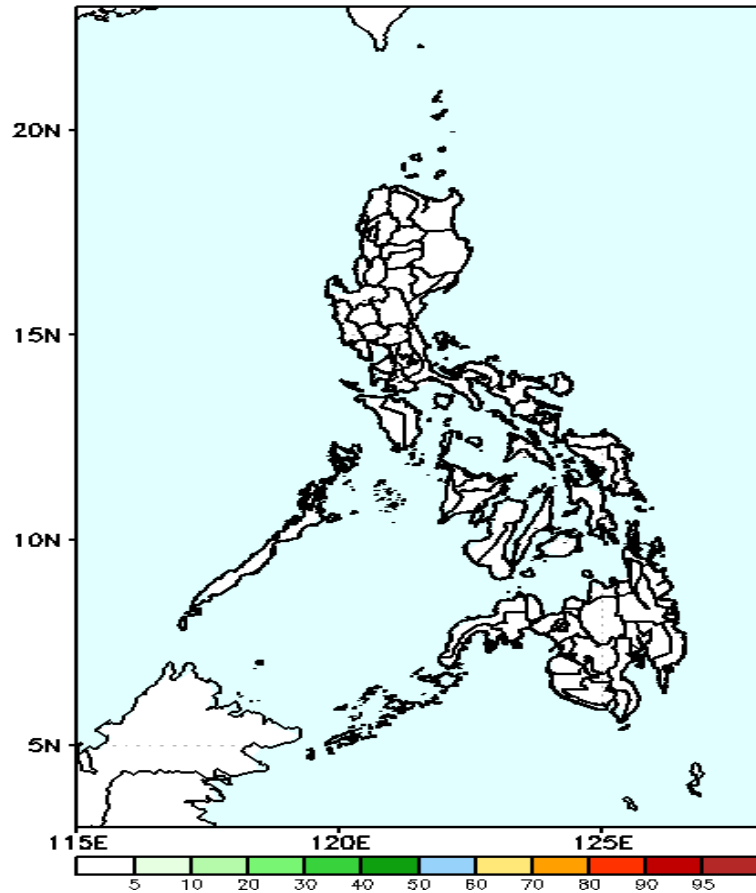
GEFS Week-1 Exceedance Prob. > 100mm GEFS Week-1 Exceedance Prob. > 150mm GEFS Week-1 Exceedance Prob. > 200mm
Valid: 20230308 — 20230314 Valid: 20230308 — 20230314 Valid: 20230308 — 20230314



Low probability of rainfall to exceed 100mm in most parts of the country during the forecast period.



Low probability of rainfall to exceed 150mm in most parts of the country during the forecast period.

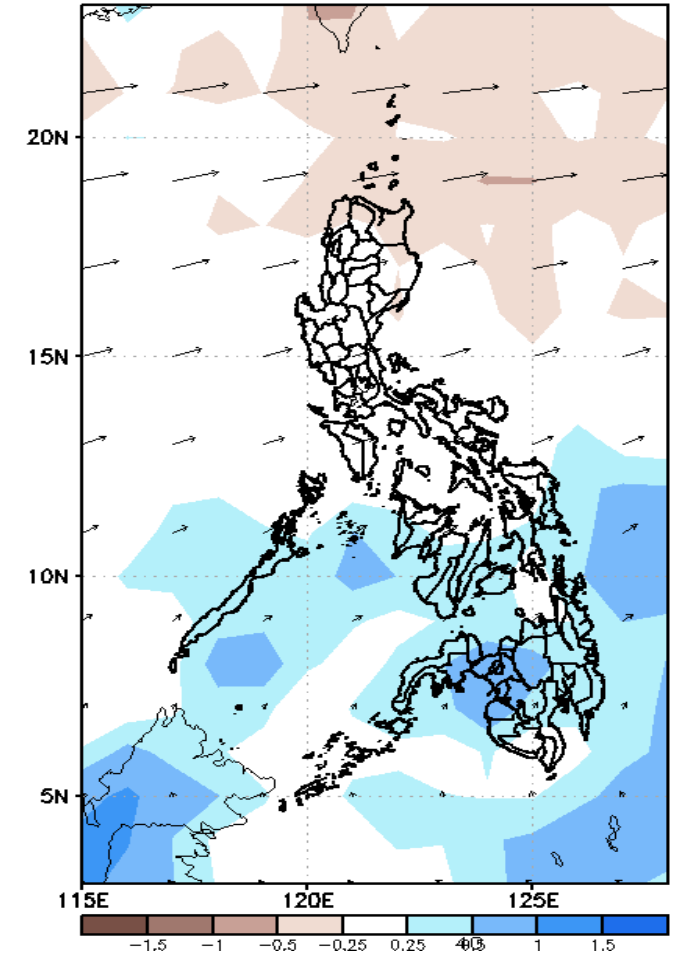
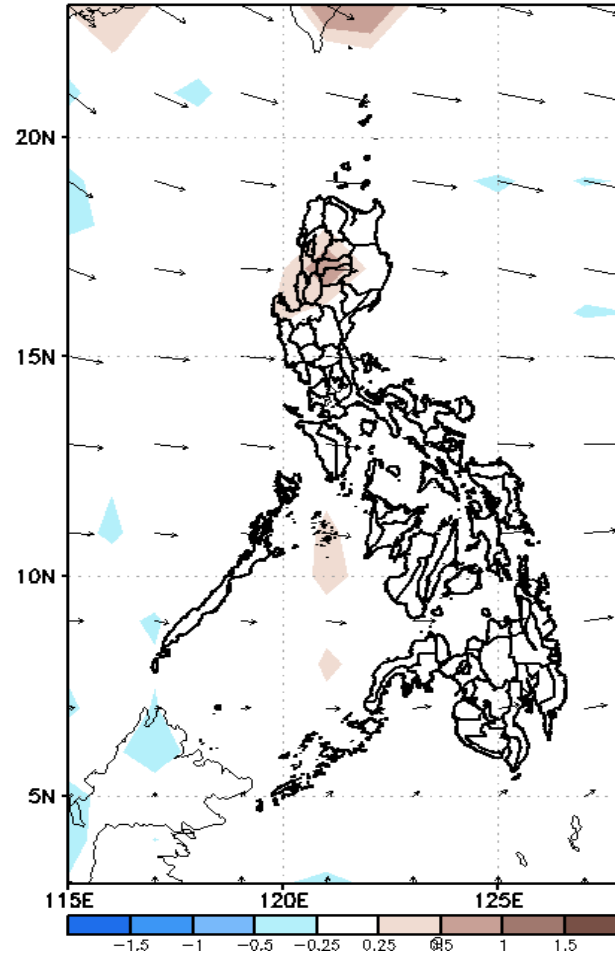
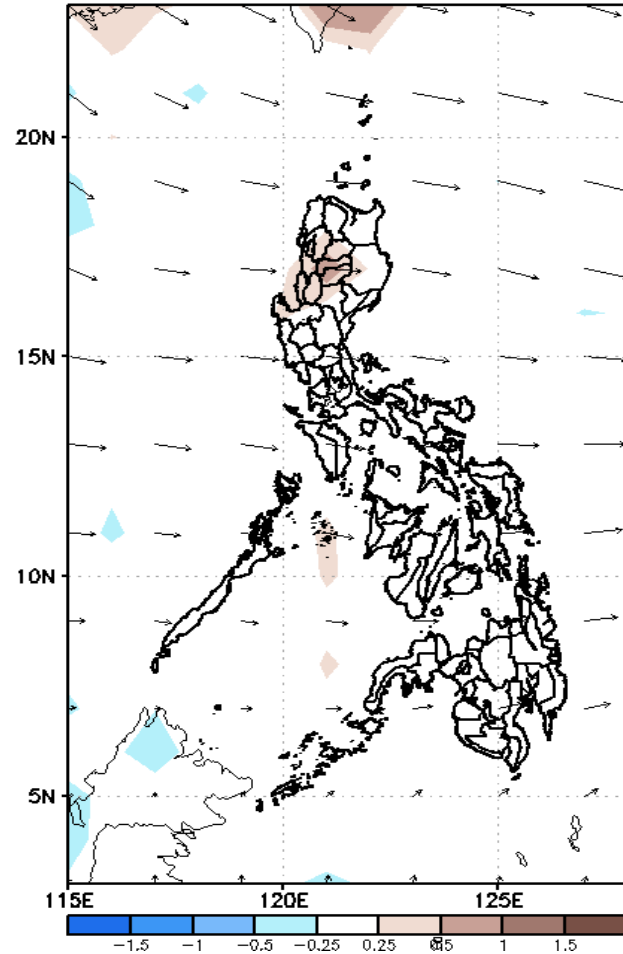


Low probability of rainfall to exceed 200mm in most parts of the country during the forecast period.

GEFS Week-2 Forecasts: Wind Anomaly Forecast

Week 2: Mar 15-21, 2023

GEFS Week-2 850-hPa Divergence and Wind Anom
Valid: 20230315 - 20230321

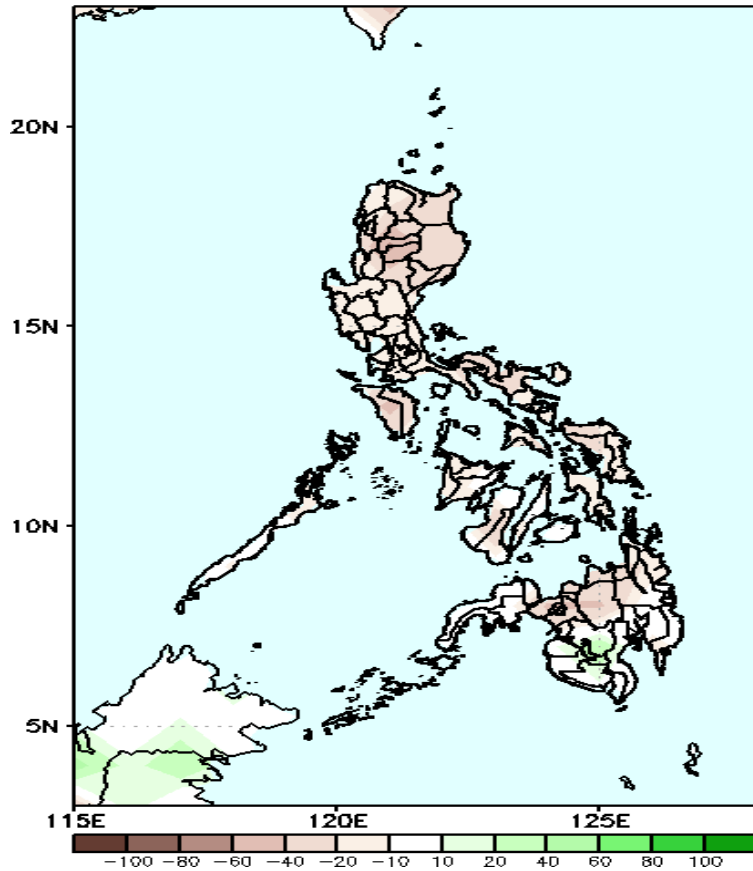


Easterlies is forecasted to affect most parts of the country during the forecast period.

Precipitation Anomaly and Exceedance Probability > 25/50 mm

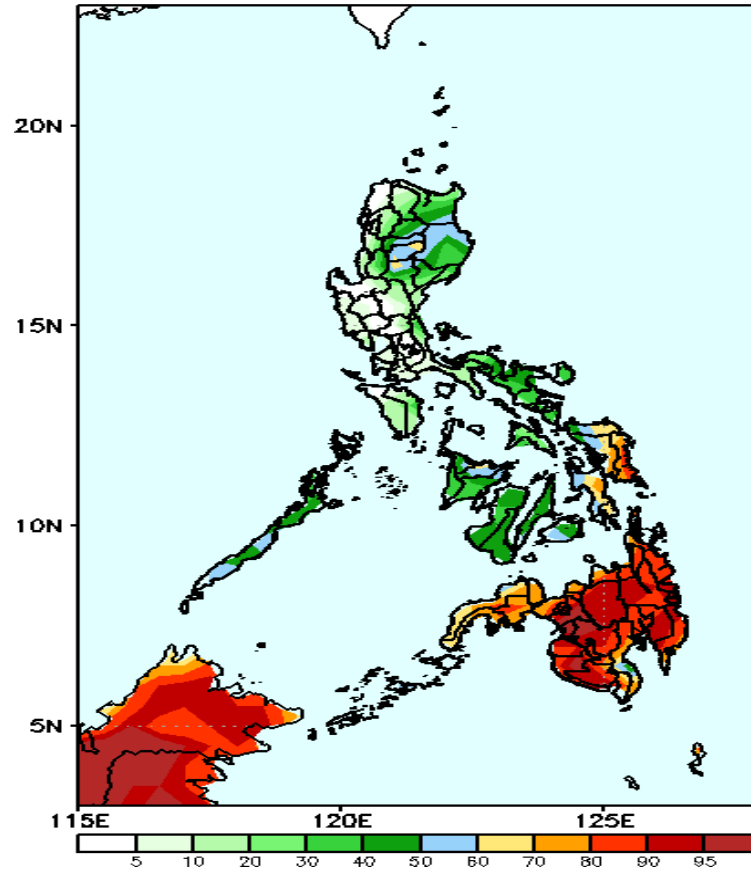
Week 2: Mar 15-21, 2023

GEFS Week-2 Precip Anomaly
Valid: 20230315 - 20230321



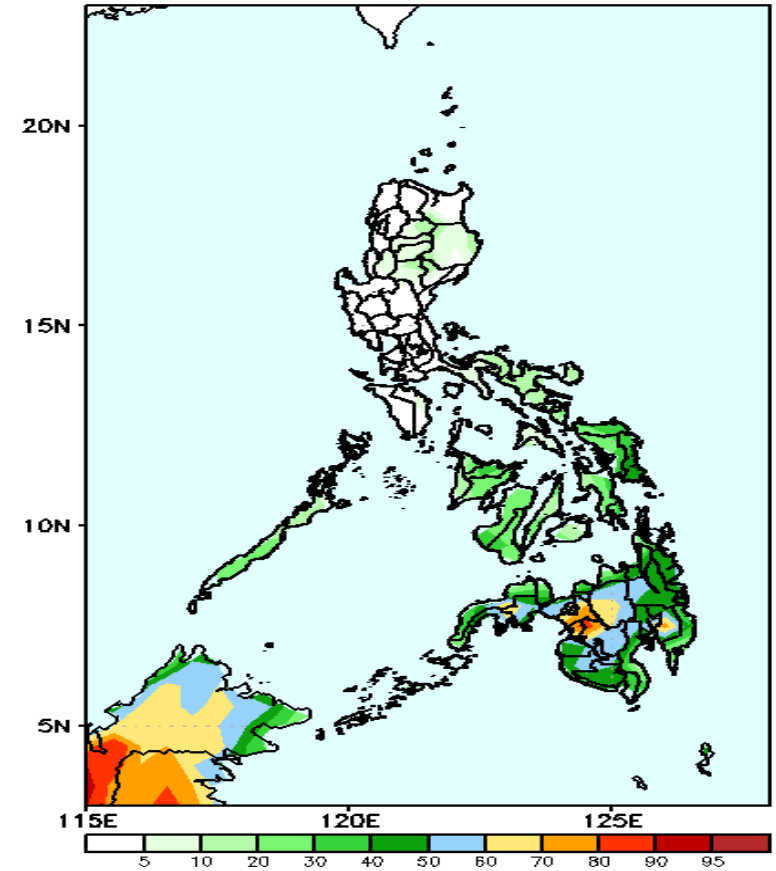
Rainfall deficit of 20-60mm is expected in most parts of the country during the forecast period.

GEFS Week-2 Exceedance Prob. > 25mm
Valid: 20230315 - 20230321



High to a very high probability of rainfall exceeding 25mm in Mindanao and Eastern Visayas while low to moderate chance over the rest of the country.

GEFS Week-2 Exceedance Prob. > 50mm
Valid: 20230315 - 20230321



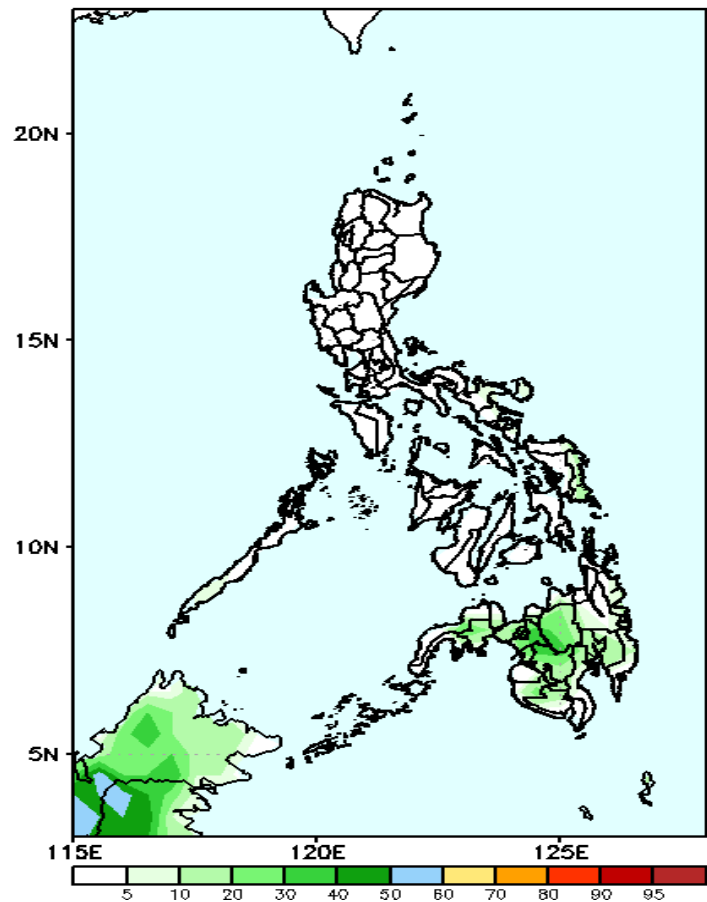
Moderate to a high probability of rainfall exceeding 50mm in Mindanao and Eastern Visayas while low chance over the rest of the country.



Exceedance Probability > 100/150/200 mm

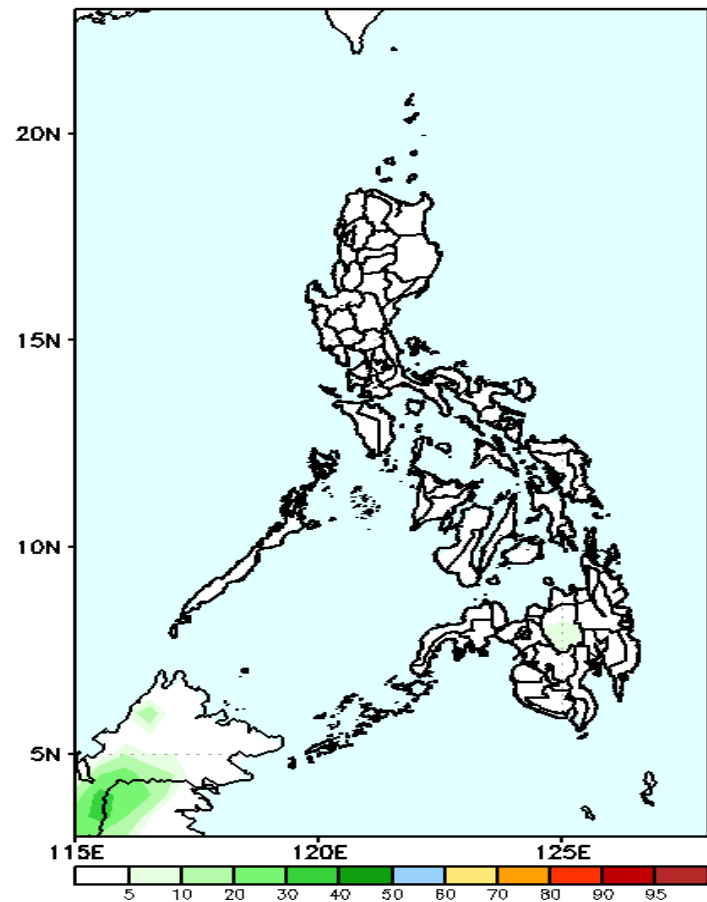
Week 2: Mar 15-21, 2023

GEFS Week-2 Exceedance Prob. > 100mm
Valid: 20230315 – 20230321



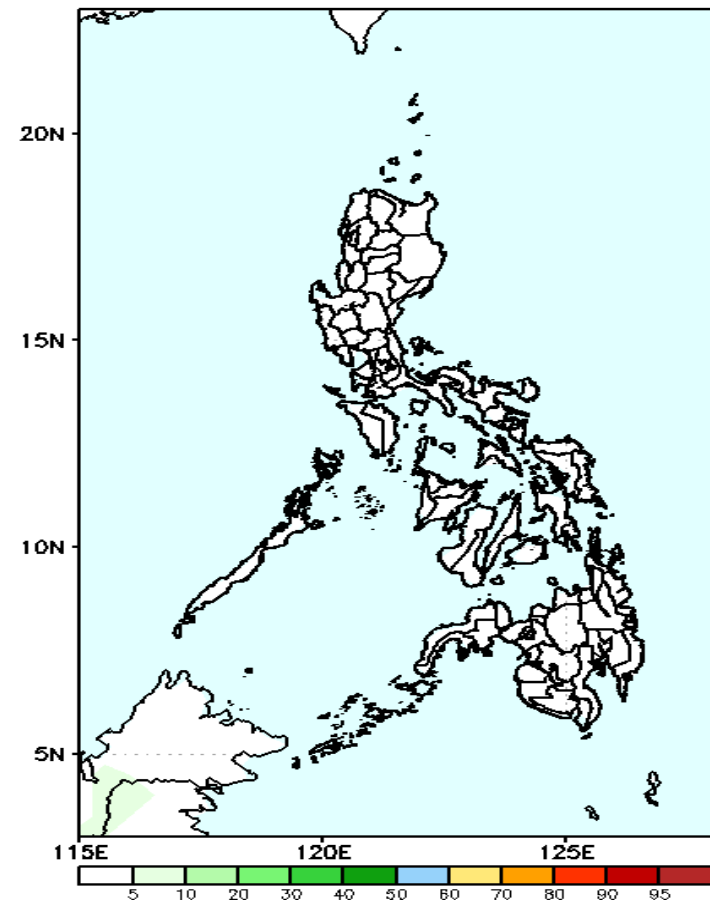
Low probability of rainfall to exceed 100mm in most parts of the country during the forecast period.

GEFS Week-2 Exceedance Prob. > 150mm
Valid: 20230315 – 20230321



Low probability of rainfall to exceed 150mm in most parts of the country during the forecast period.

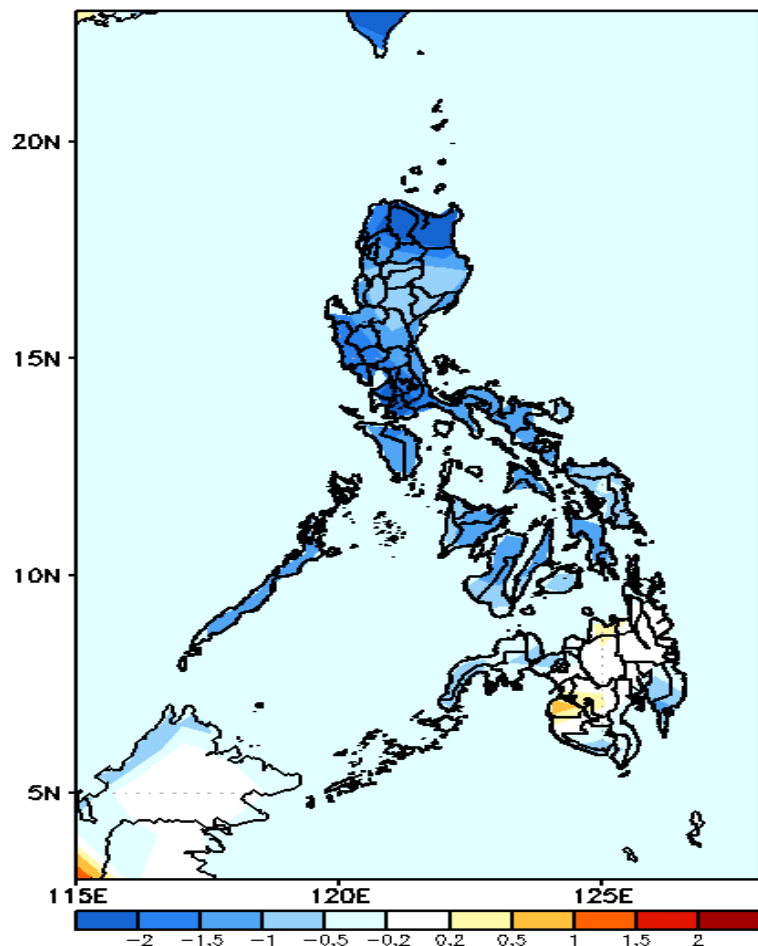
GEFS Week-2 Exceedance Prob. > 200mm
Valid: 20230315 – 20230321



Low probability of rainfall to exceed 200mm in most parts of the country during the forecast period.

GEFS Week-1 & 2 Forecasts: T2m Anomaly

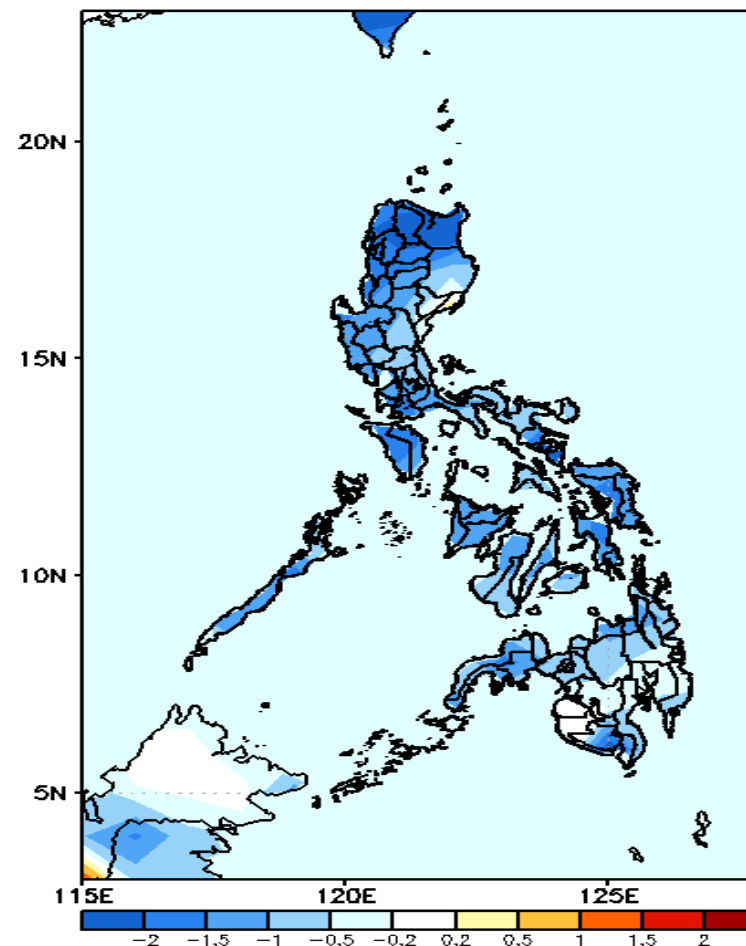
GEFS Week-1 T2m Anomaly
Valid: 20230308 — 20230314



2m Temperature Week 1: Mar 8-14, 2023

Slightly cooler to cooler than average surface air temperature will likely experience in most parts of the country except Maguindanao during the forecast period.

GEFS Week-2 T2m Anomaly
Valid: 20230315 — 20230321



2m Temperature Week 2: Mar 15-21, 2023

Slightly cooler to cooler than average surface air temperature will likely experience in most parts of the country during the forecast period.