



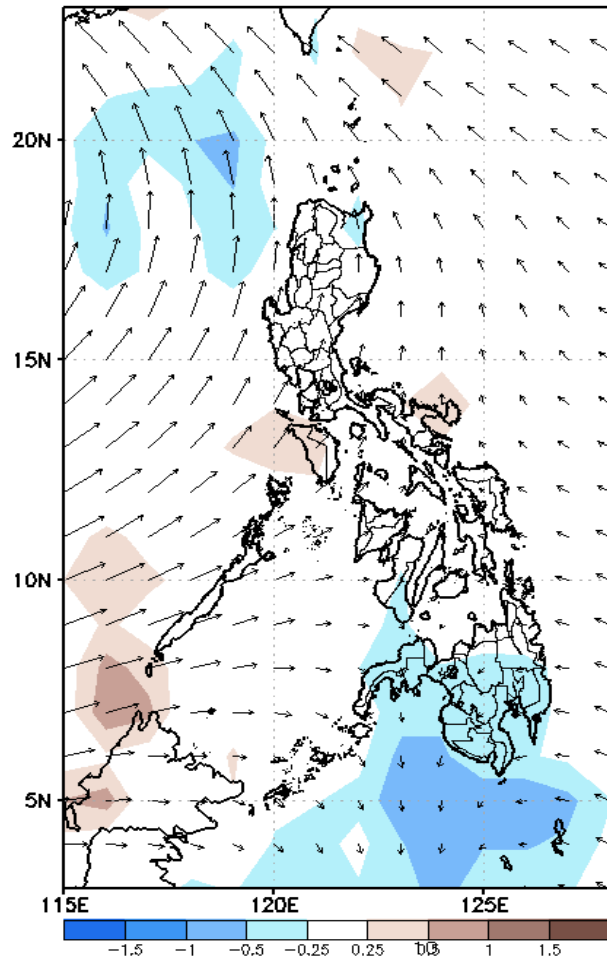
Week 1 & Week 2 Forecast for the Philippines using GEFS Model



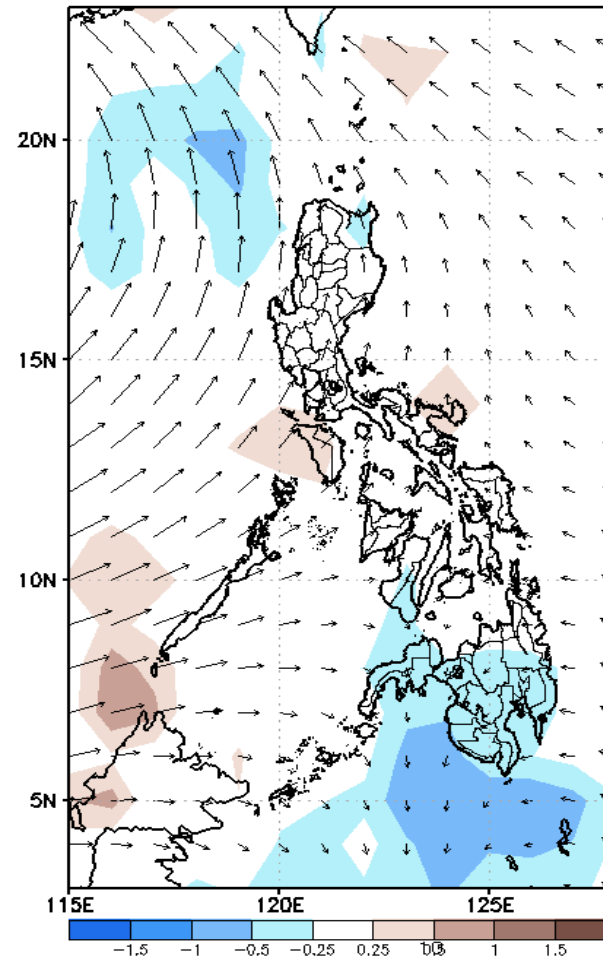
GEFS Week-1 Forecasts: Wind Anomaly Forecast

Week 1: Aug 08-14, 2022

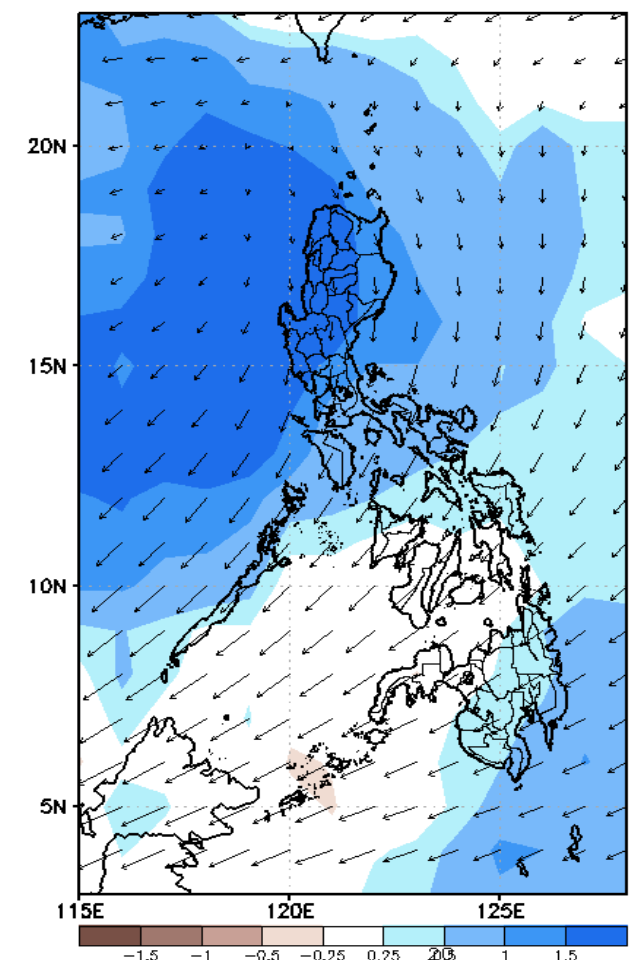
GEFS Week-1 850-hPa Divergence and Wind Anom
Valid: 20220808 - 20220814



GEFS Week-1 700-hPa Divergence and Wind Anom
Valid: 20220808 - 20220814



GEFS Week-1 200-hPa Divergence and Wind Anom.
Valid: 20220808 - 20220814

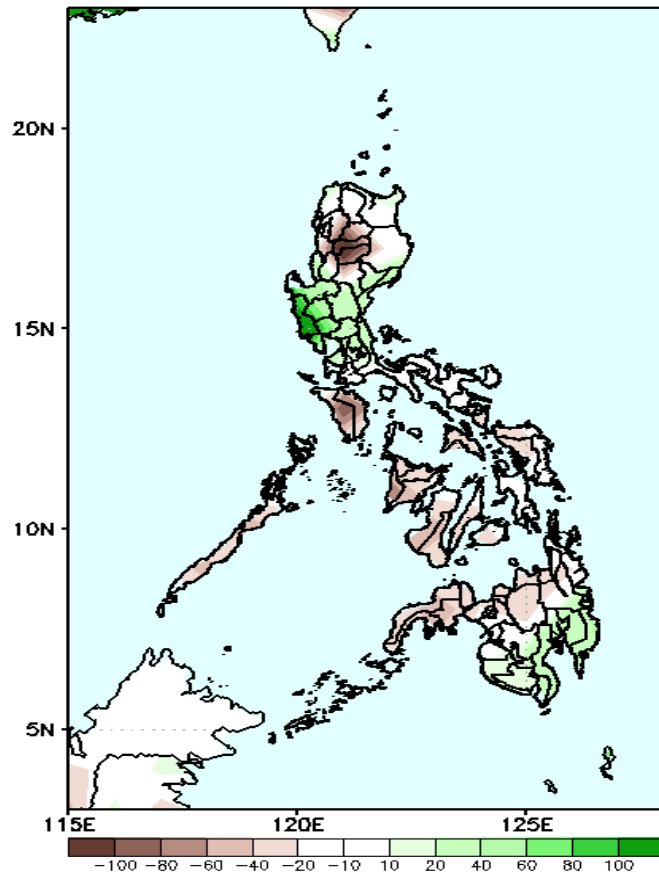


Southwest Monsoon affecting most parts of Luzon, Western Visayas and Mindanao; while, Easterlies affecting the eastern section of Visayas and Mindanao during the forecast period.

Precipitation Anomaly and Exceedance Probability > 25/50 mm

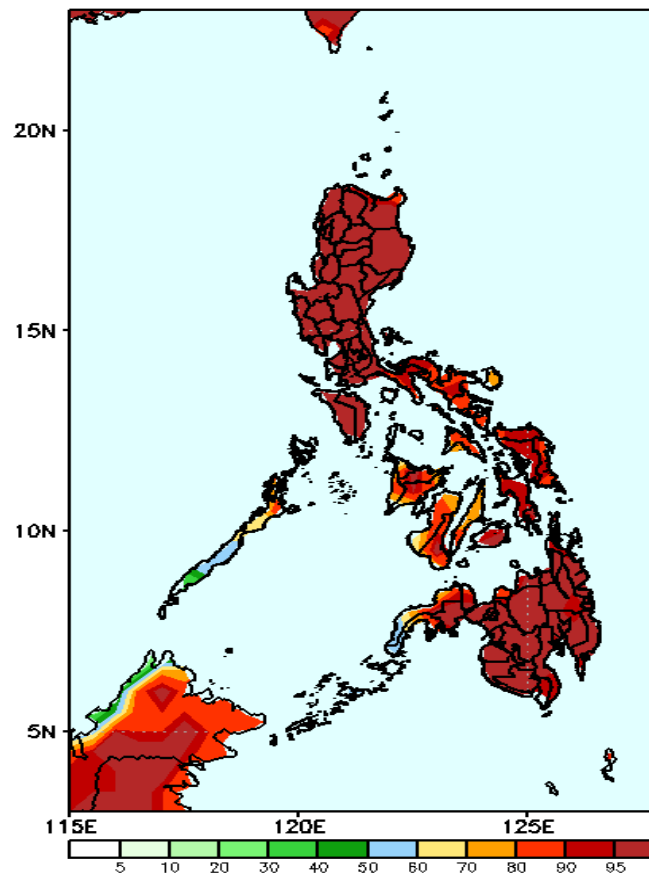
Week 1: Aug 08-14, 2022

GEFS Week-1 Precip Anomaly
Valid: 20220808 – 20220814



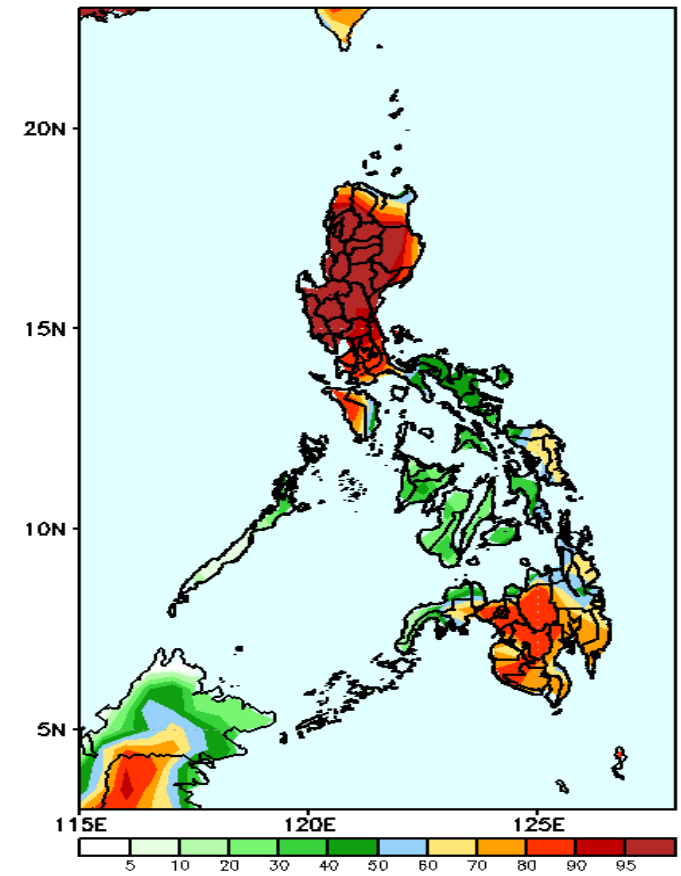
Increase of rainfall of 50-100mm is expected in most parts of Central Luzon and southern Mindanao while rainfall deficit of 40-100 for the rest of the country during the forecast period .

GEFS Week-1 Exceedance Prob. > 25mm
Valid: 20220808 – 20220814



High probability of rainfall to exceed 25mm in most parts of the country during the forecast period.

GEFS Week-1 Exceedance Prob. > 50mm
Valid: 20220808 – 20220814

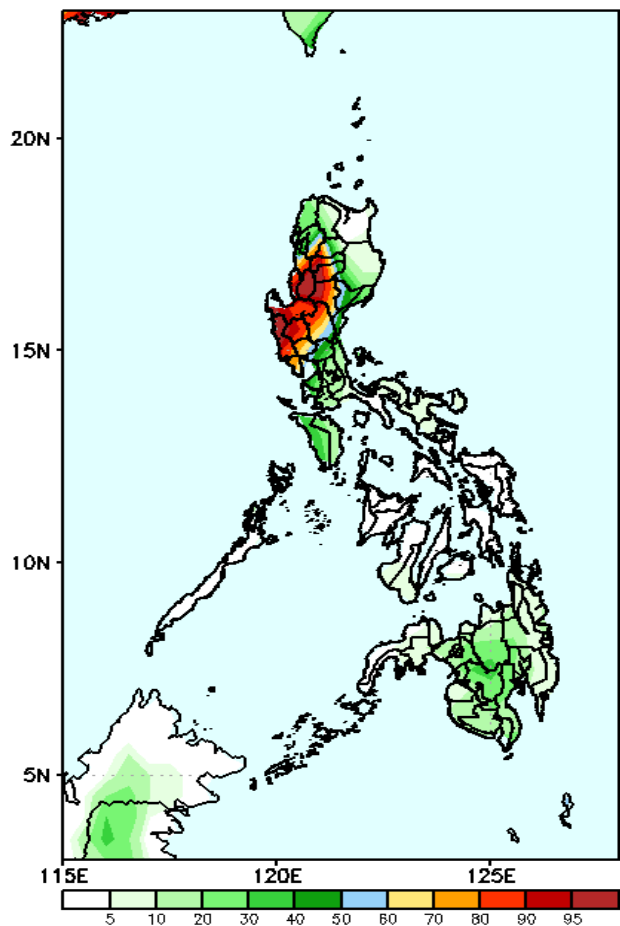


High probability of rainfall to exceed 50mm in most parts of Luzon (except Bicol Region), Samar provinces and Mindanao while less likely for the rest of the country during the forecast period.

Exceedance Probability > 100/150/200 mm

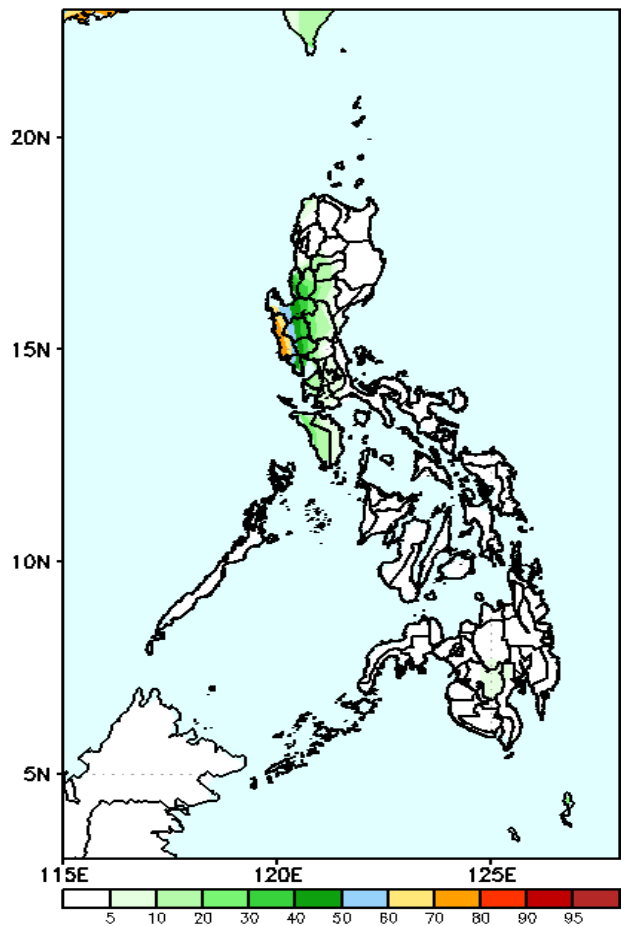
Week 1: Aug 08-14, 2022

GEFS Week-1 Exceedance Prob. > 100mm
Valid: 20220808 – 20220814



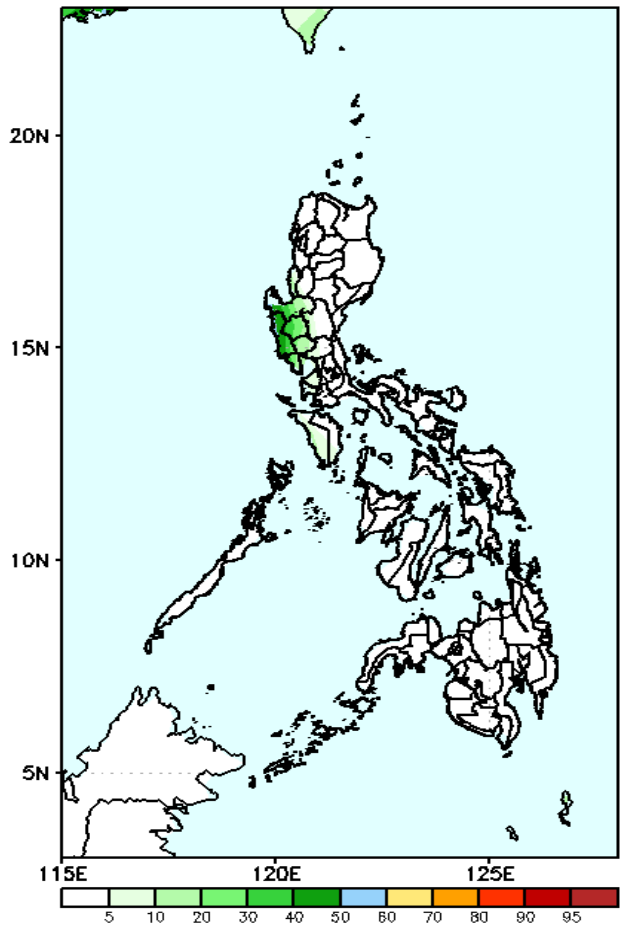
High probability of rainfall to exceed 100mm in most parts of Ilocos & Cordillera Region and Central Luzon while less likely for the rest of the country during the forecast period.

GEFS Week-1 Exceedance Prob. > 150mm
Valid: 20220808 – 20220814



Low probability of rainfall to exceed 150mm in most parts of the country except in Pangasinan and Zambales where there is 60-80% chance during the forecast period.

GEFS Week-1 Exceedance Prob. > 200mm
Valid: 20220808 – 20220814



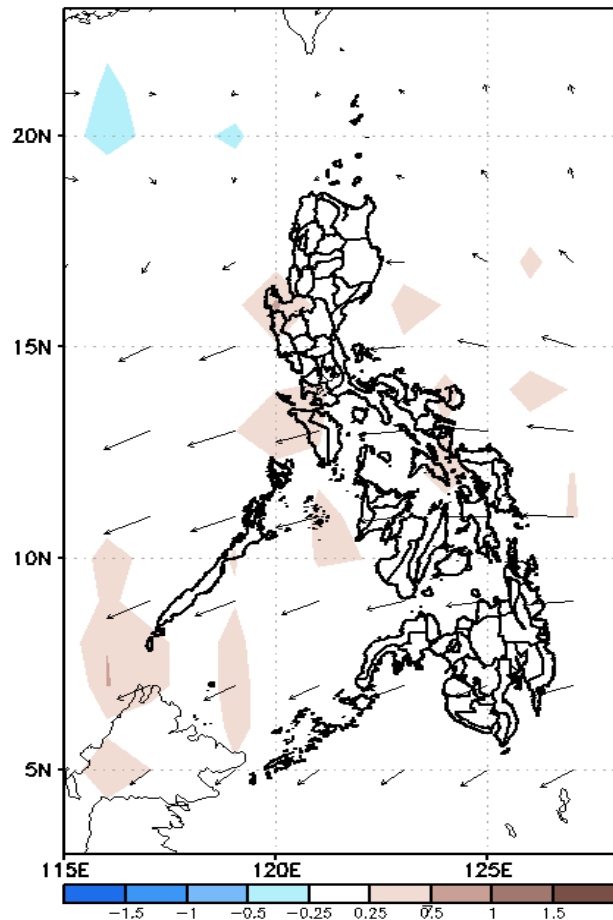
Low probability of rainfall to exceed 200mm in most parts of the country during the forecast period.



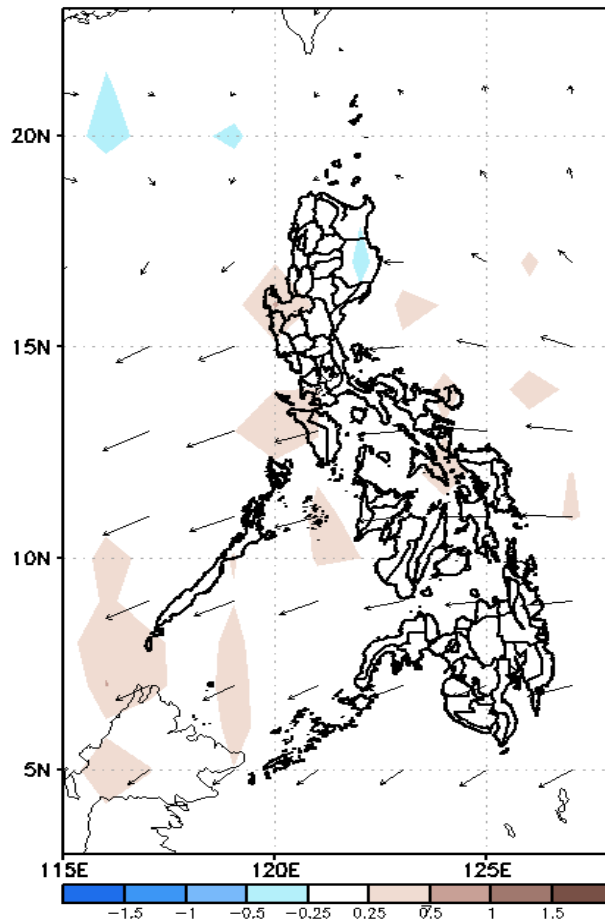
GEFS Week-2 Forecasts: Wind Anomaly Forecast

Week 2: Aug 15-21, 2022

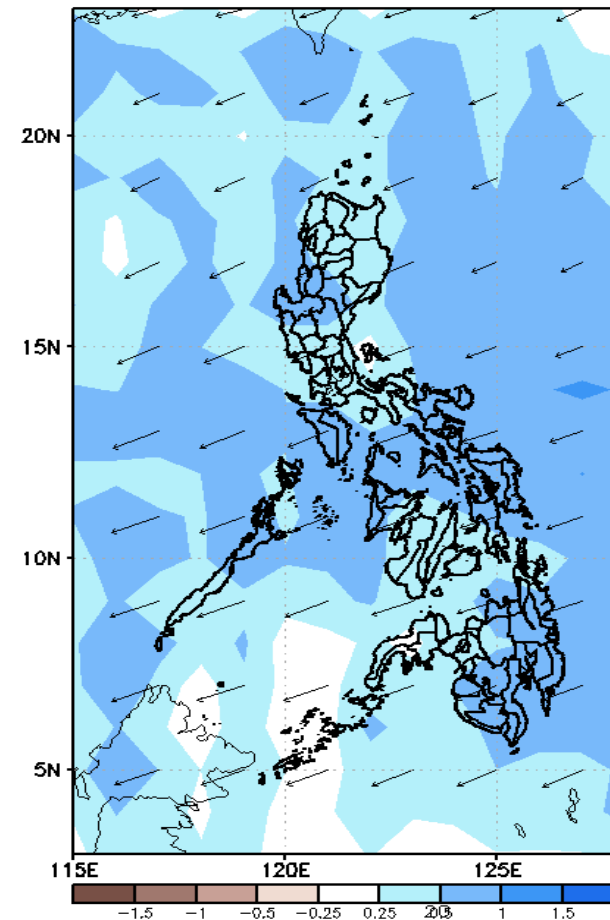
GEFS Week-2 850-hPa Divergence and Wind Anom
Valid: 20220815 - 20220821



GEFS Week-2 700-hPa Divergence and Wind Anom
Valid: 20220815 - 20220821



GEFS week-2 200-hPa Divergence and Wind Anom
Valid: 20220815 - 20220821

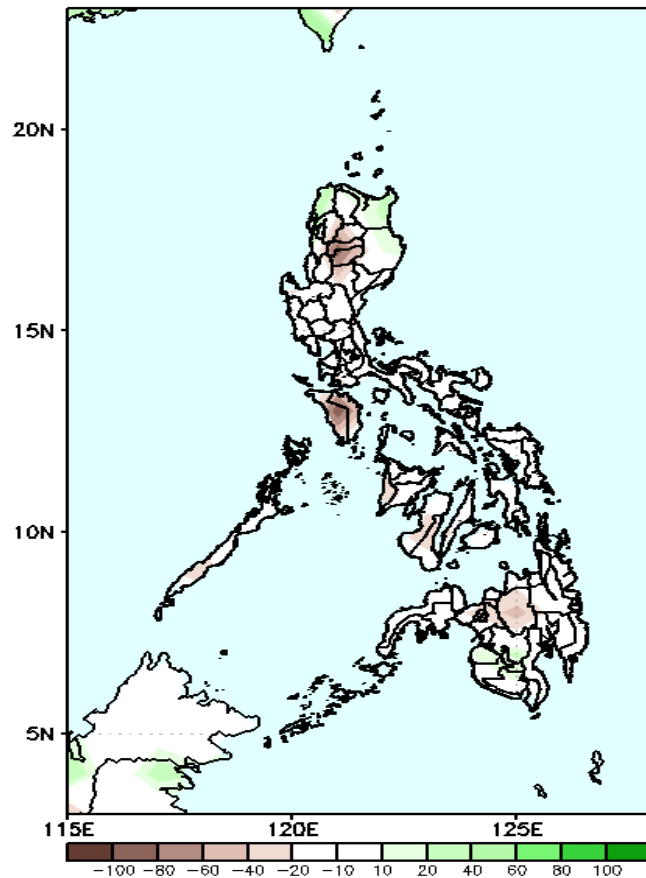


Southwest Monsoon affecting the eastern portion of Northern Luzon while Easterlies affecting the rest of the country during the forecast period.

Precipitation Anomaly and Exceedance Probability > 25/50 mm

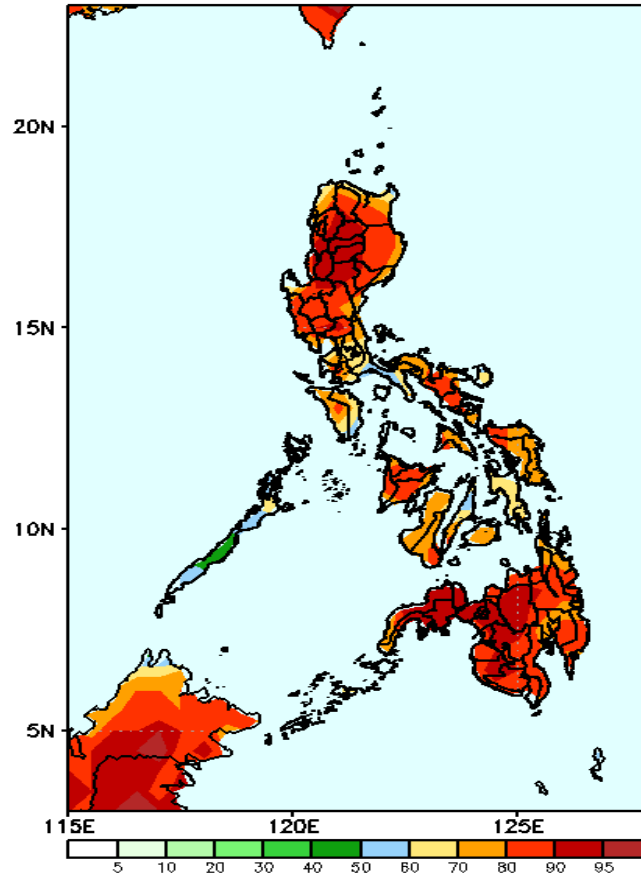
Week 2: Aug 15-21, 2022

GEFS Week-2 Precip Anomaly
Valid: 20220815 - 20220821



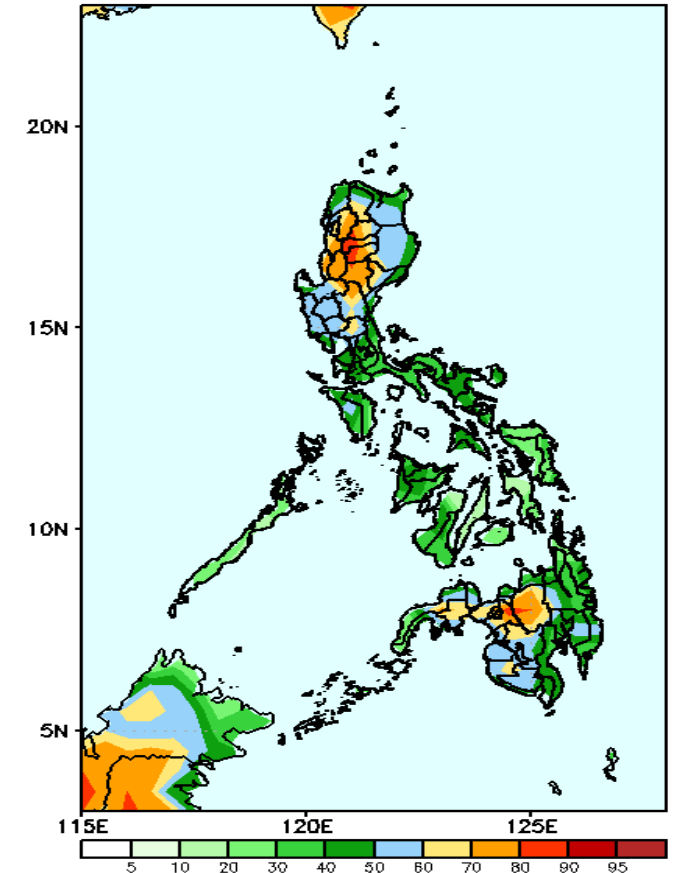
Rainfall deficit of 40-80 mm is expected in Mt. Province, Apayao, Mindoro and Bukidnon while 40-60mm increase in southwestern Mindanao during the forecast period.

GEFS Week-2 Exceedance Prob. > 25mm
Valid: 20220815 - 20220821



High probability of rainfall to exceed 25mm in most parts of the country during the forecast period.

GEFS Week-2 Exceedance Prob. > 50mm
Valid: 20220815 - 20220821

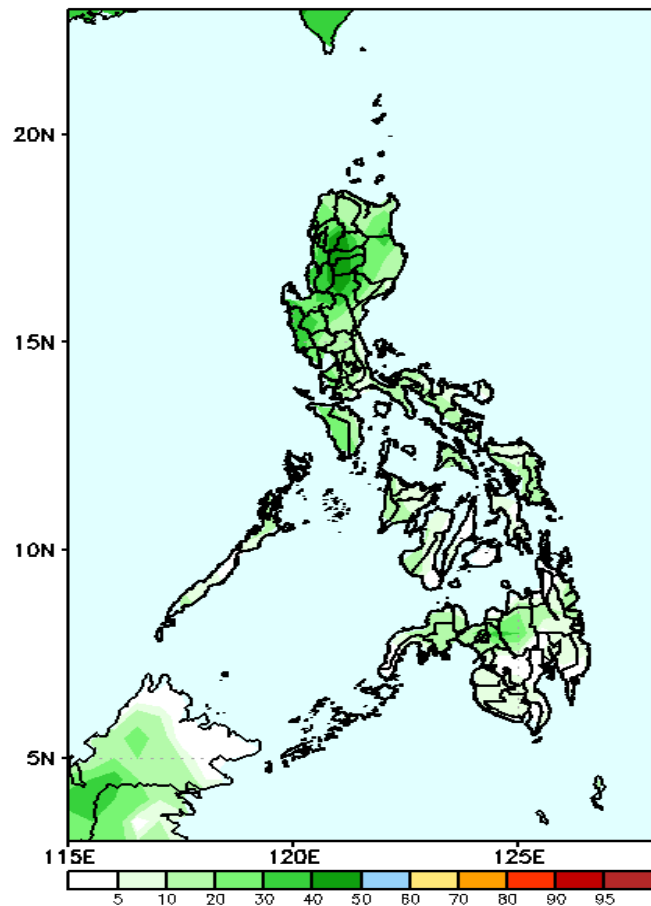


High probability of rainfall to exceed 50mm in most parts of Ilocos & Cordillera Region, Central Luzon and western Mindanao(including Bukidnon) while less likely for the rest of the country during the forecast period.

Exceedance Probability > 100/150/200 mm

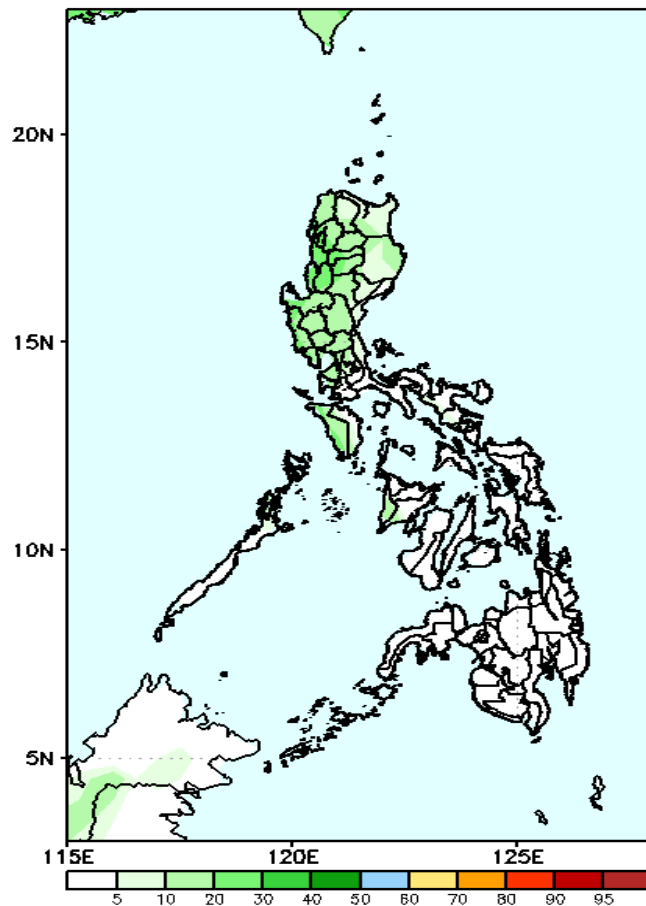
Week 2: Aug 15-21, 2022

GEFS Week-2 Exceedance Prob. > 100mm
Valid: 20220815 – 20220821



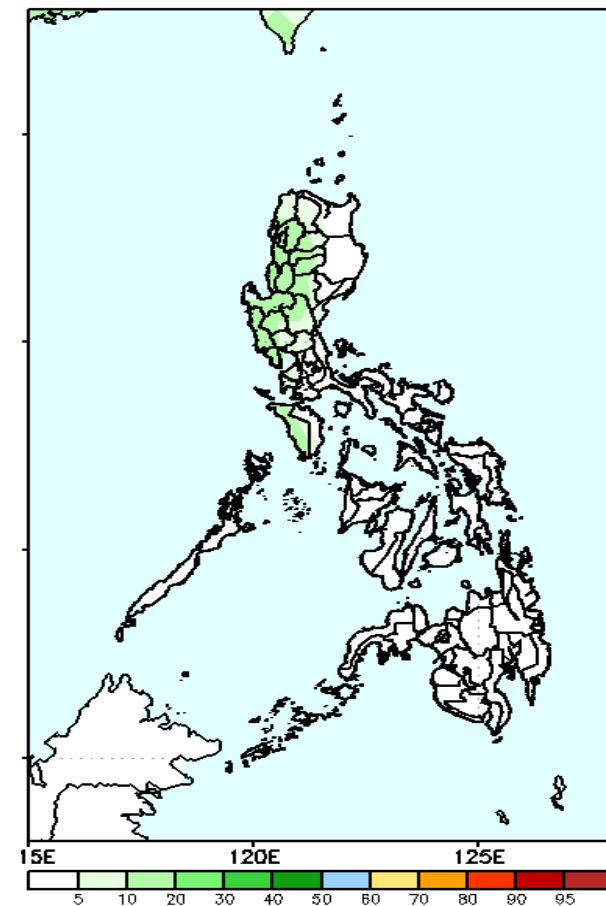
Low probability of rainfall to exceed 100mm in most parts of the country during the forecast period.

GEFS Week-2 Exceedance Prob. > 150mm
Valid: 20220815 – 20220821



Low probability of rainfall to exceed 150mm in most parts of the country during the forecast period.

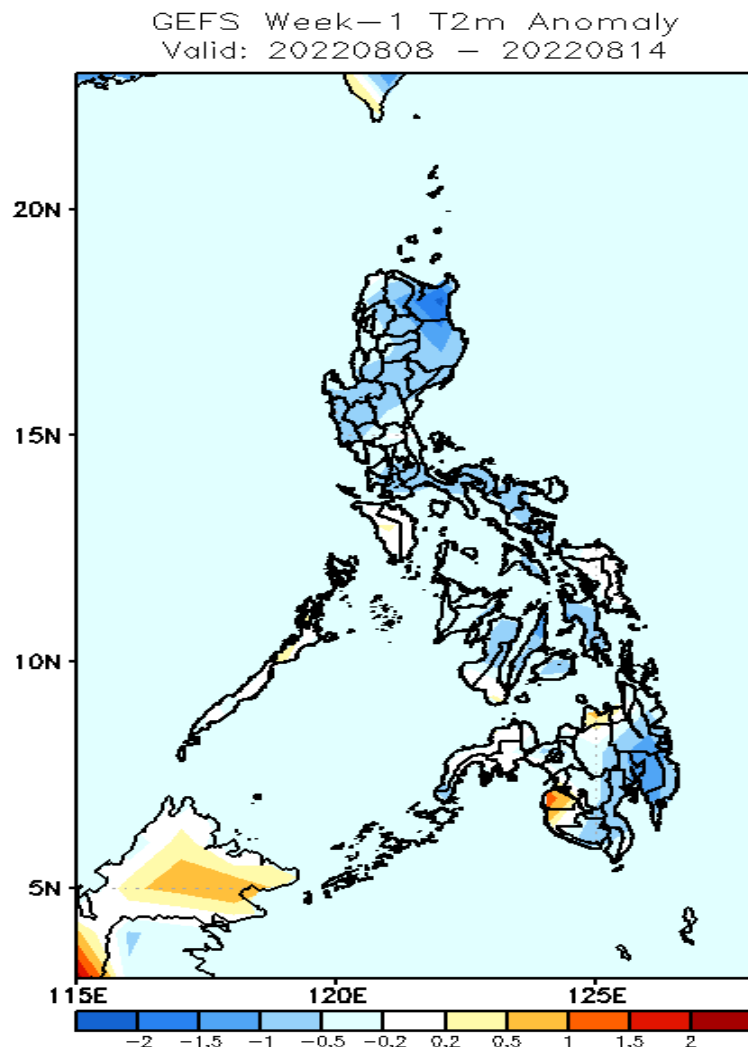
GEFS Week-2 Exceedance Prob. > 200mm
Valid: 20220815 – 20220821



Low probability of rainfall to exceed 200mm in most parts of the country during the forecast period.

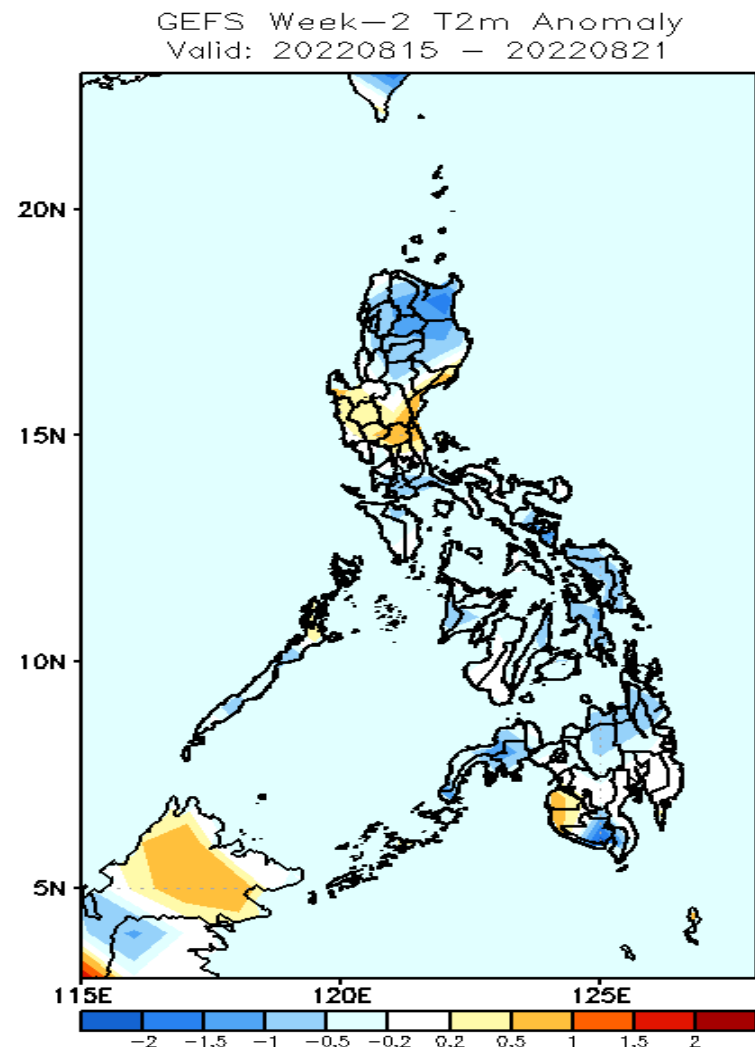


GEFS Week-1 & 2 Forecasts: T2m Anomaly



2m Temperature Week 1: Aug 08-14, 2022

Near to cooler than average surface air temperature will likely experience in most parts of the country except in Misamis Oriental and Maguindanao (slightly warmer) during the forecast period.



2m Temperature Week 2: Aug 15-21, 2022

Near to cooler than average surface air temperature will likely experience in most parts of the country except in Central Luzon, Maguindanao and Sultan Kudarat where near to slightly warmer temperature is expected during the forecast period.