



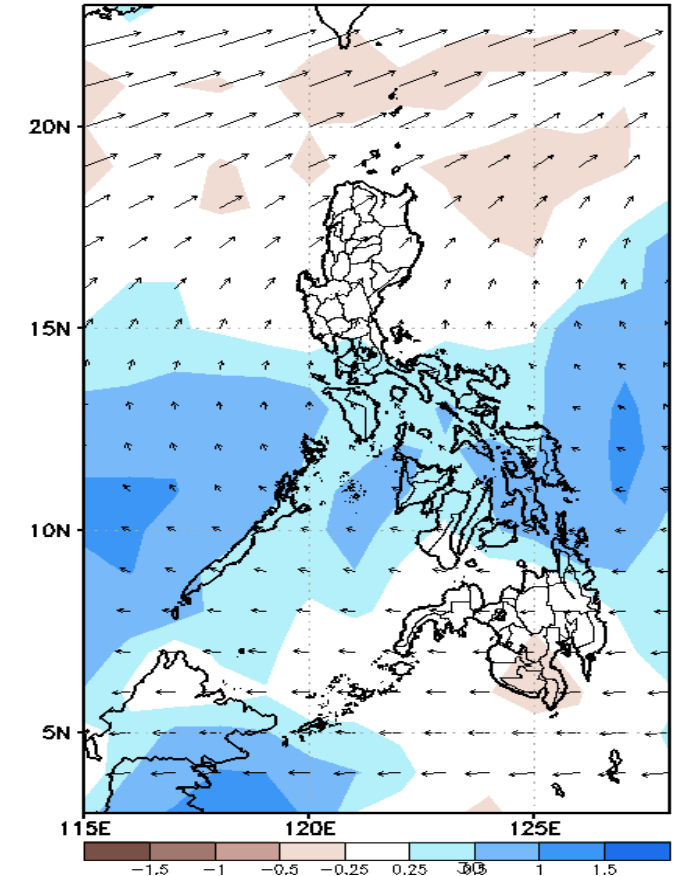
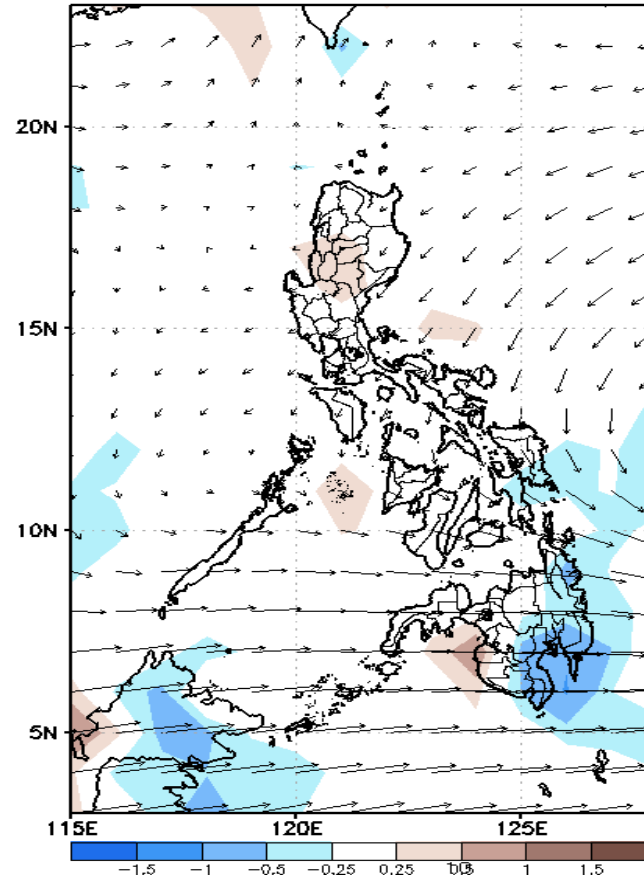
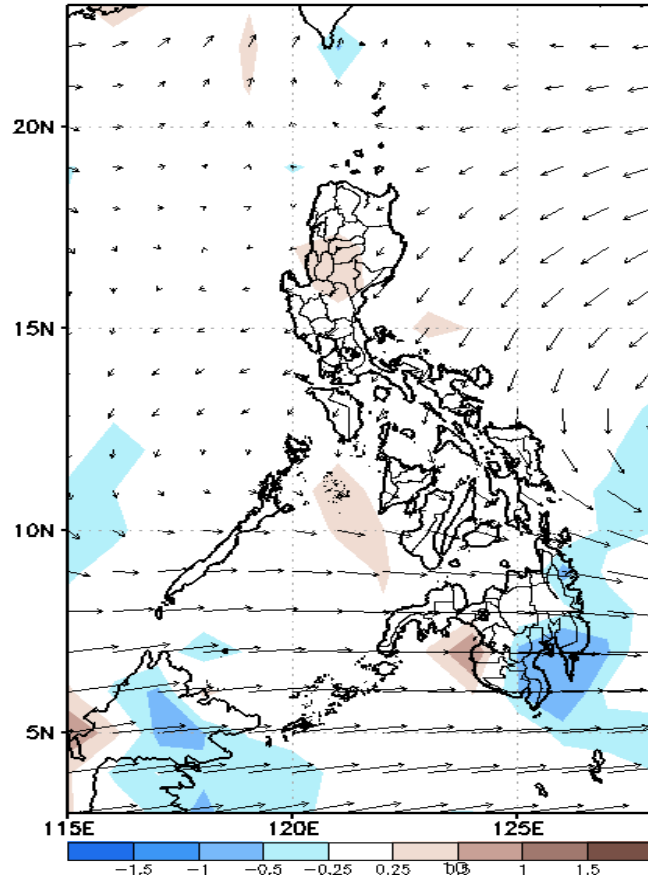
Week 1 & Week 2 Forecast for the Philippines using GEFS Model



GEFS Week-1 Forecasts: Divergence & Wind Anomaly

Week 1: Apr 08-14, 2022

GEFS Week-1 850-hPa Divergence and Wind Anom
Valid: 20220408 - 20220414



Upper and low level Divergence suggest a likelihood of light to moderate precipitation in most parts of Southern Luzon, Visayas, CARAGA. Easterlies affecting most parts of the country attributing to warmer temperatures during the forecast period.

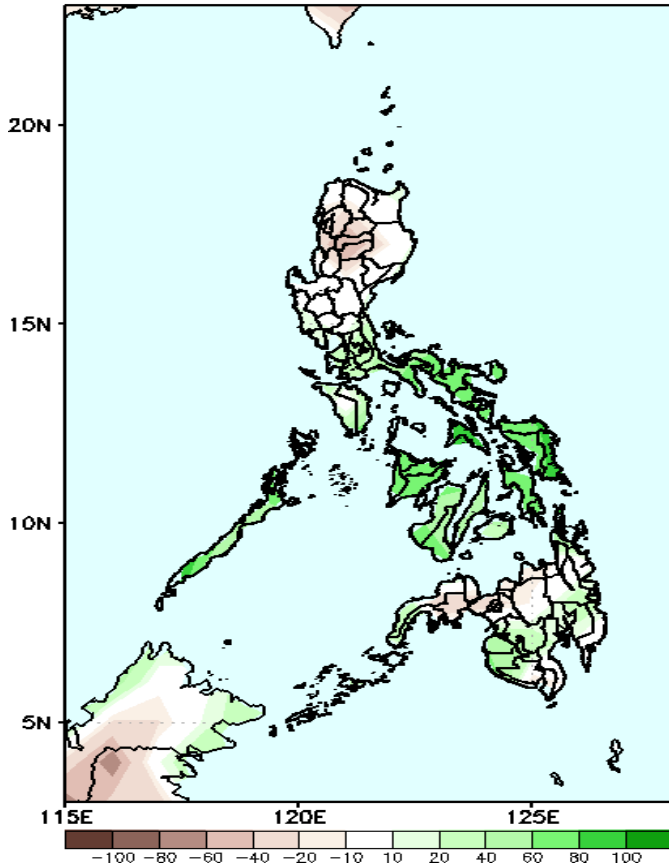
19 SA



Precipitation Anomaly and Exceedance Probability > 25/50 mm

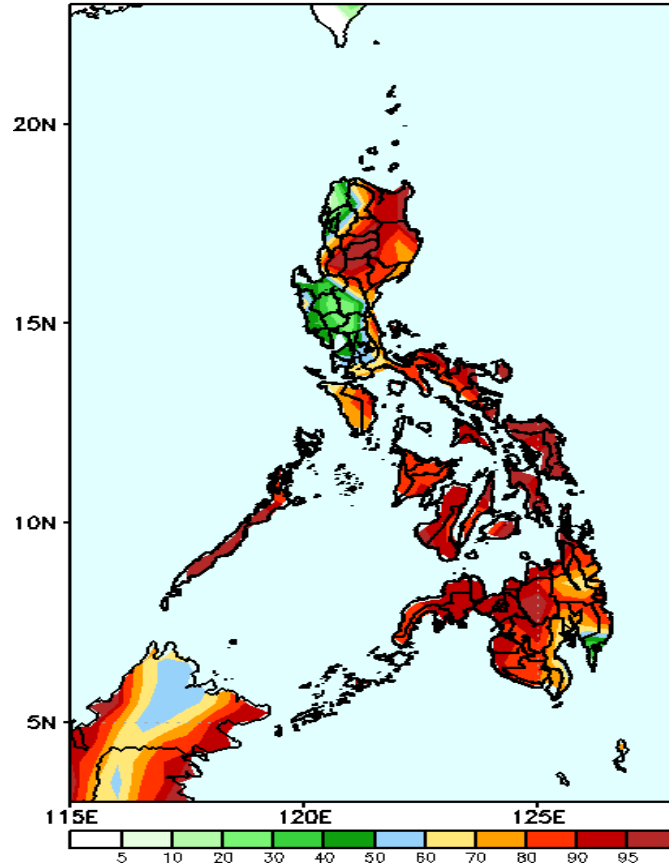
Week 1: Apr 08-14, 2022

GEFS Week-1 Precip Anomaly
Valid: 20220408 - 20220414



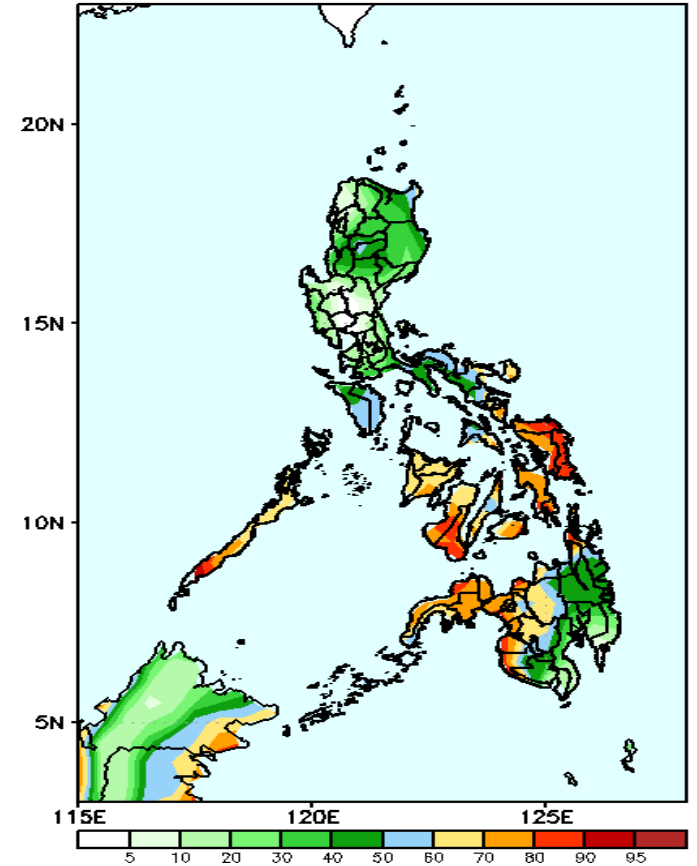
Increase of rainfall of 60-100mm in Southern Luzon, Bicol Region, most parts of Visayas & southern Mindanao while 20-50mm rainfall deficit in Cordillera Region, Lanao provinces and Zamboanga del Sur during the forecast period.

GEFS Week-1 Exceedance Prob. > 25mm
Valid: 20220408 - 20220414



High probability of rainfall to exceed 25mm in most parts of the country except in Ilocos Norte, Abra, Pangasinan and most areas of Central Luzon during the forecast period.

GEFS Week-1 Exceedance Prob. > 50mm
Valid: 20220408 - 20220414

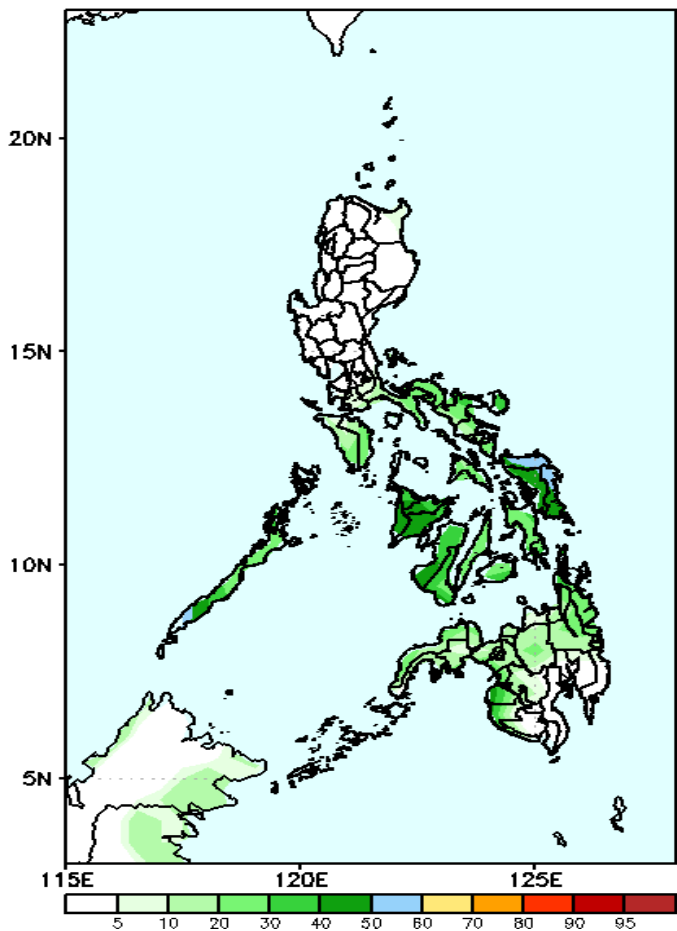


70-95% probability of rainfall to exceed 50mm in Palawan, Sorsogon, Catanduanes and in most parts of Visayas and eastern Mindanao, Surigao del Norte and Agusan del Norte while less likely for the rest of the country during the forecast period.

Exceedance Probability > 100/150/200 mm

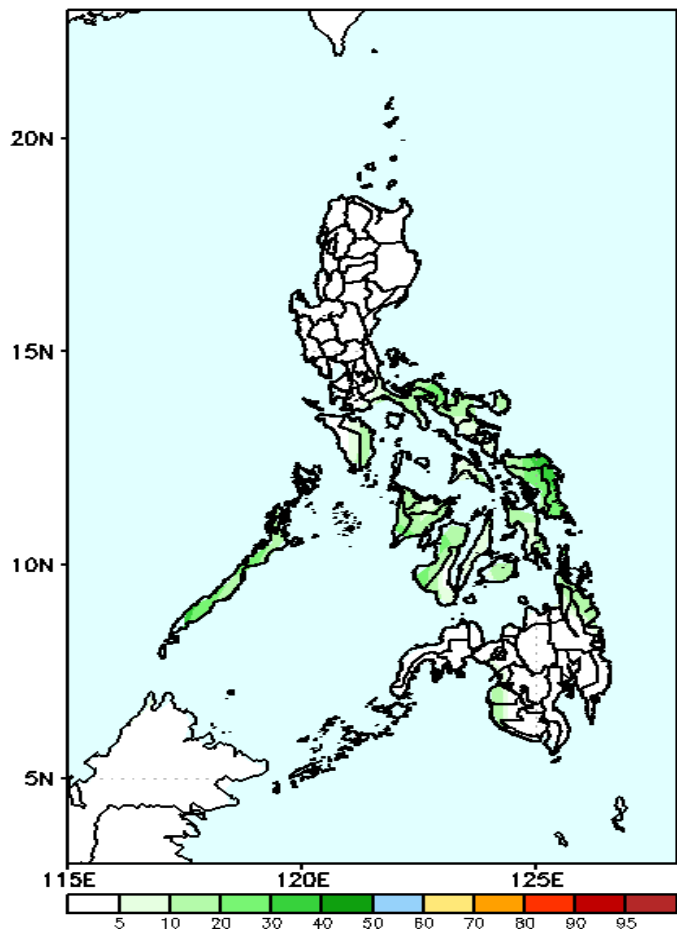
Week 1: Apr 08-14, 2022

GEFS Week-1 Exceedance Prob. > 100mm
Valid: 20220408 – 20220414



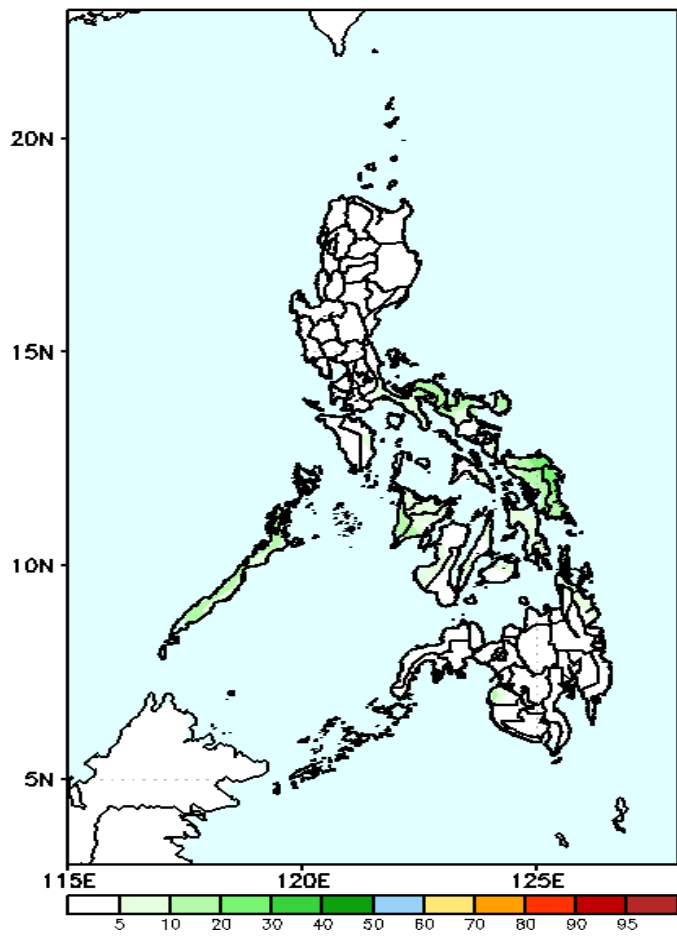
Low probability of rainfall to exceed 100mm in most parts of the country during the forecast period.

GEFS Week-1 Exceedance Prob. > 150mm
Valid: 20220408 – 20220414

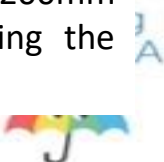


Low probability of rainfall to exceed 150mm in most parts of the country during the forecast period.

GEFS Week-1 Exceedance Prob. > 200mm
Valid: 20220408 – 20220414



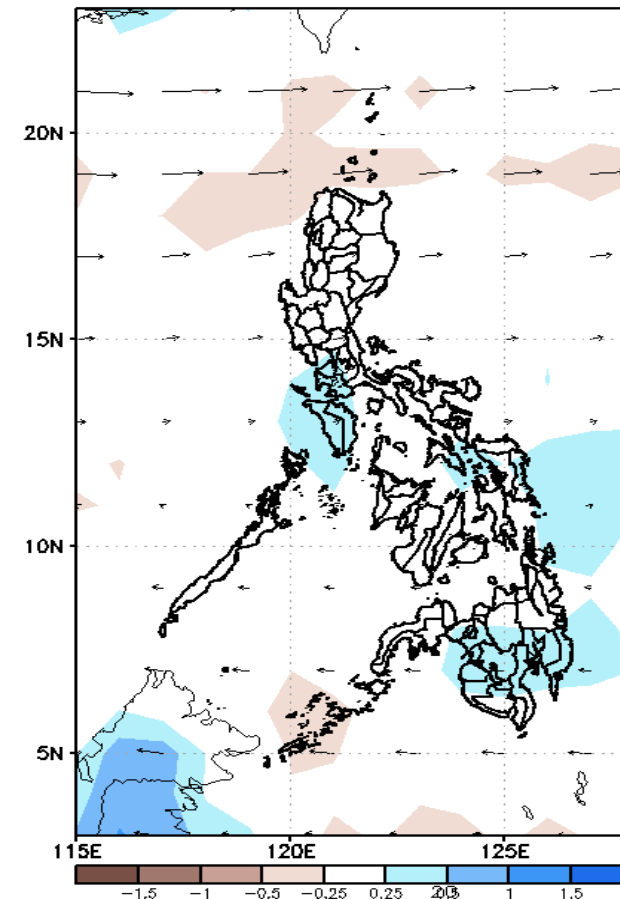
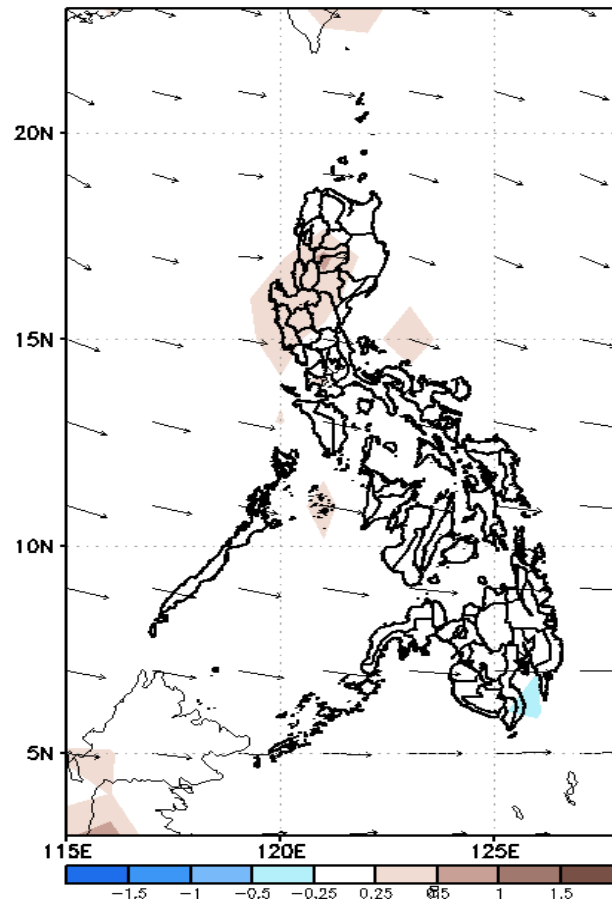
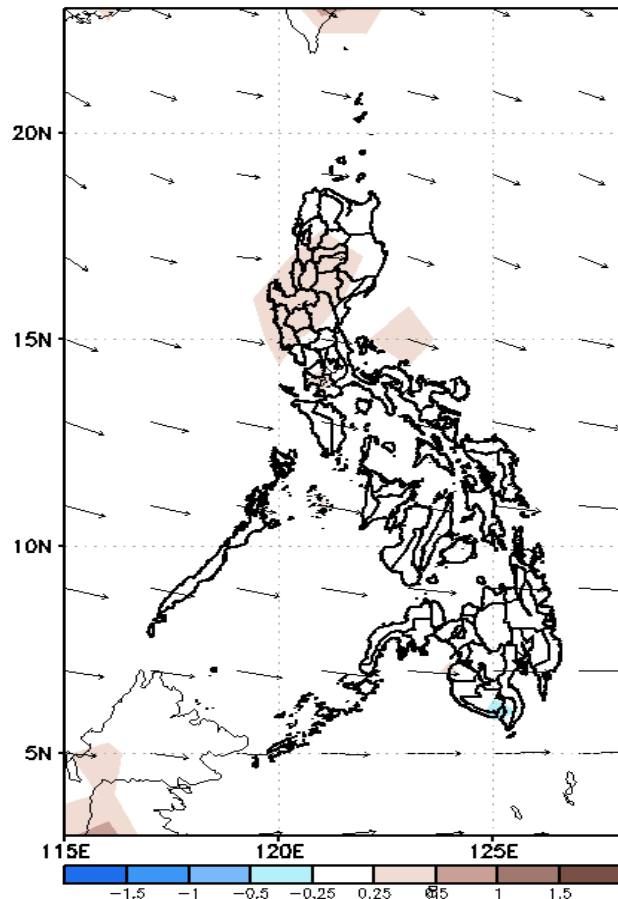
Low probability of rainfall to exceed 200mm in most parts of the country during the forecast period.



GEFS Week-2 Forecasts: Divergence & Wind Anomaly

Week 2: Apr 15-21, 2022

GEFS Week-2 850-hPa Divergence and Wind Anom
Valid: 20220415 - 20220421

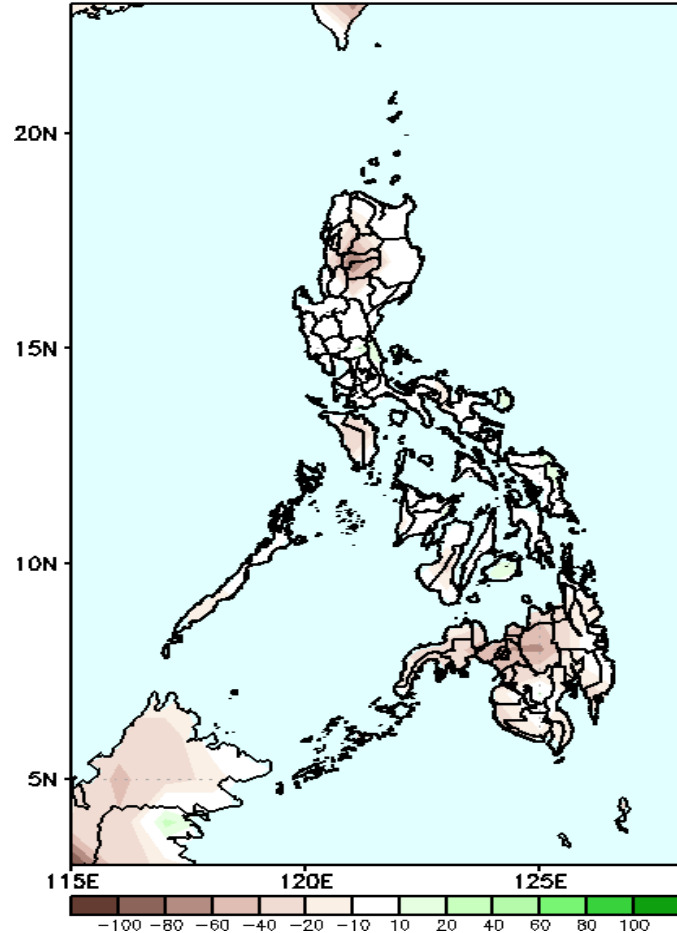


Upper and low level Divergence suggest a likelihood precipitation in Mindoro provinces, Batangas, Cavite and most parts of Mindanao due to localized thunderstorms . Easterlies affecting most parts of the country attributing to warmer temperatures during the forecast period.

Precipitation Anomaly and Exceedance Probability > 25/50 mm

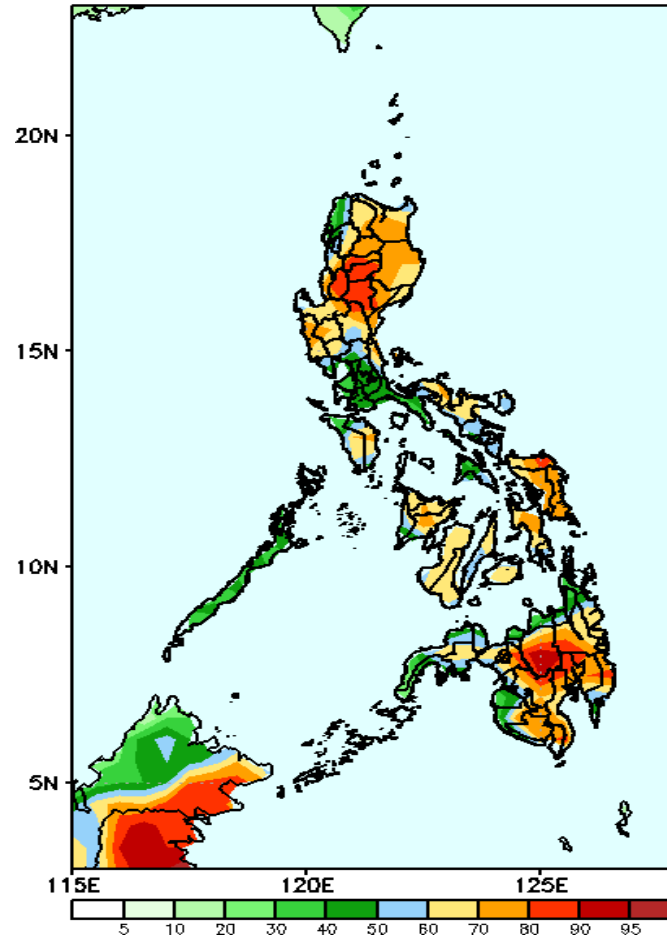
Week 2: Apr 15-21, 2022

GEFS Week-2 Precip. Anomaly
Valid: 20220415 - 20220421



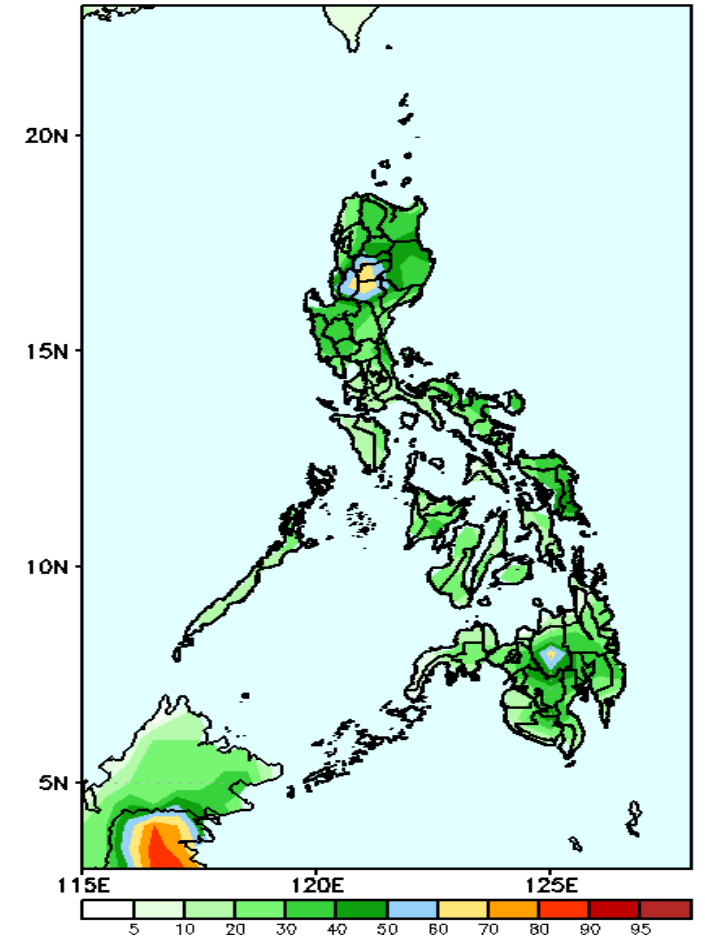
Rainfall deficit of 30-70mm in Cordillera Region, Mindoro and Northern Mindanao during the forecast period.

GEFS Week-2 Exceedance Prob. > 25mm
Valid: 20220415 - 20220421



High probability of rainfall to exceed 25mm in most parts of Cordillera Region, Nueva Viscaya and central Mindanao while 50-80% chance for the rest of the country during the forecast period.

GEFS Week-2 Exceedance Prob. > 50mm
Valid: 20220415 - 20220421

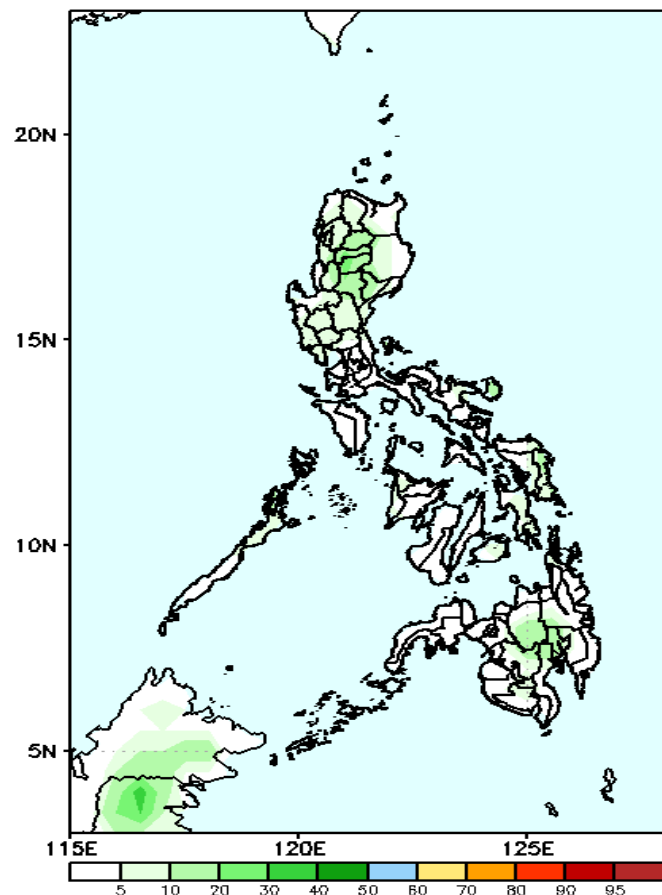


Low probability of rainfall to exceed 50mm in most parts of the country during the forecast period.

Exceedance Probability > 100/150/200 mm

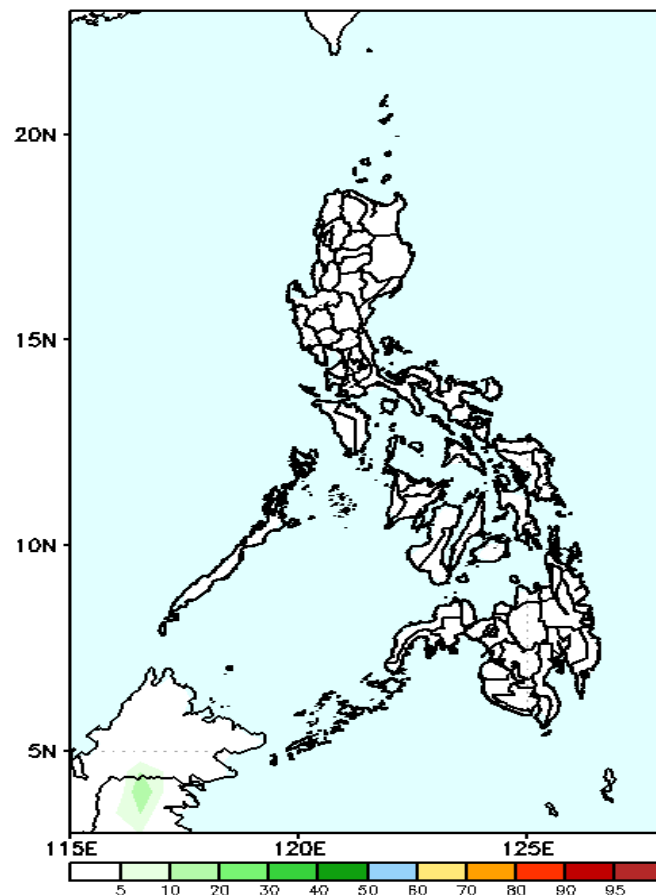
Week 2: Apr 15-21, 2022

GEFS Week-2 Exceedance Prob. > 100mm
Valid: 20220415 - 20220421



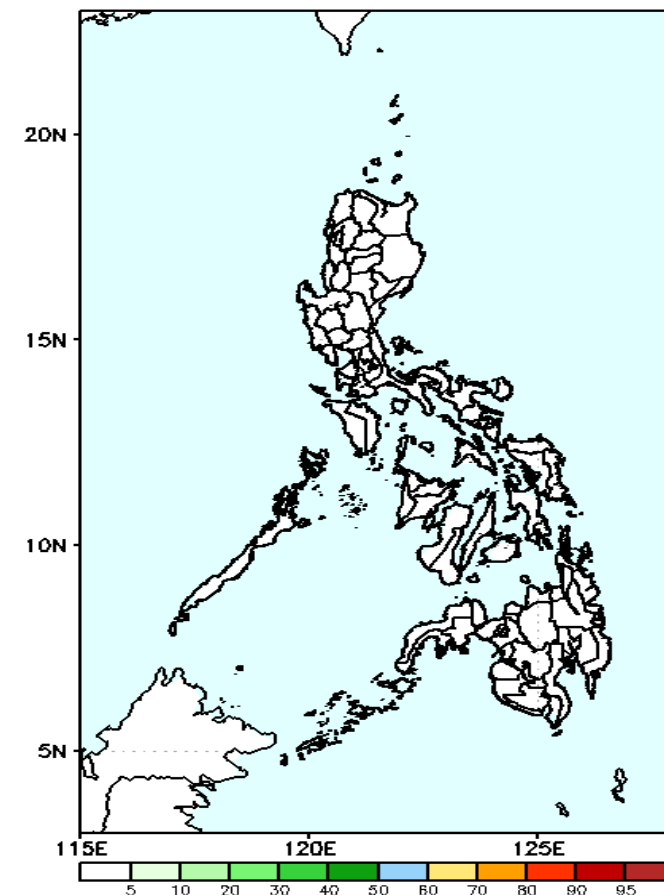
Low probability of rainfall to exceed 100mm in most parts of the country during the forecast period.

GEFS Week-2 Exceedance Prob. > 150mm
Valid: 20220415 - 20220421



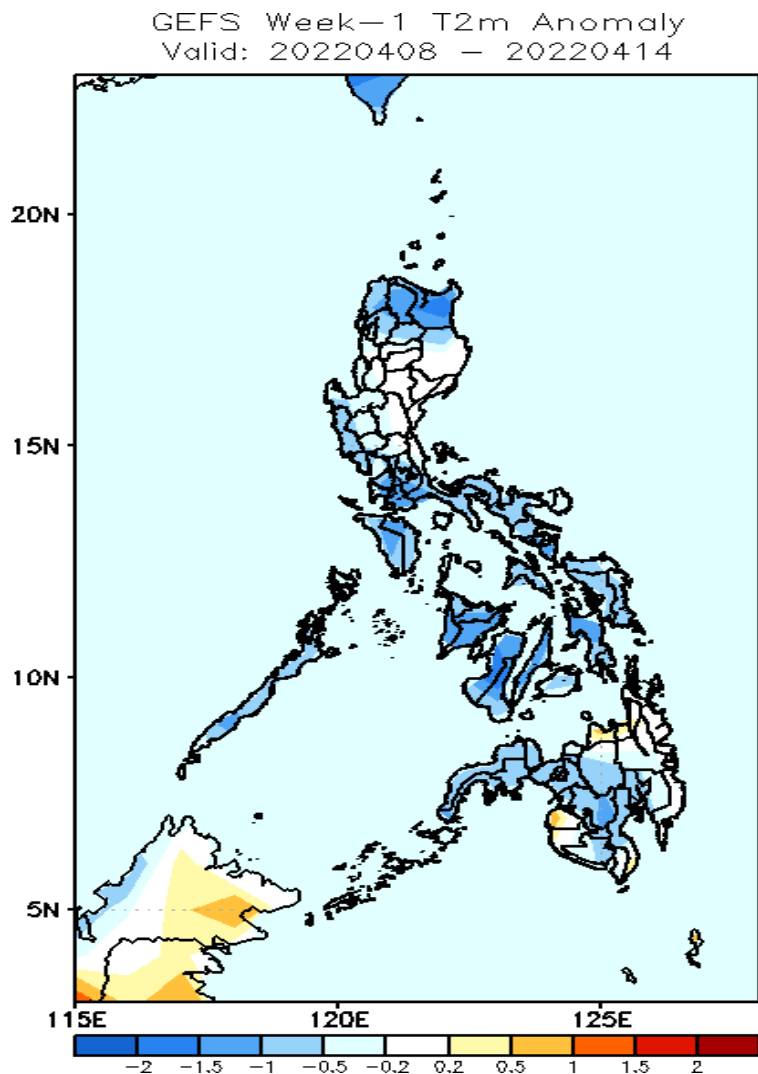
Low probability of rainfall to exceed 150mm in most parts of the country during the forecast period.

GEFS Week-2 Exceedance Prob. > 200mm
Valid: 20220415 - 20220421



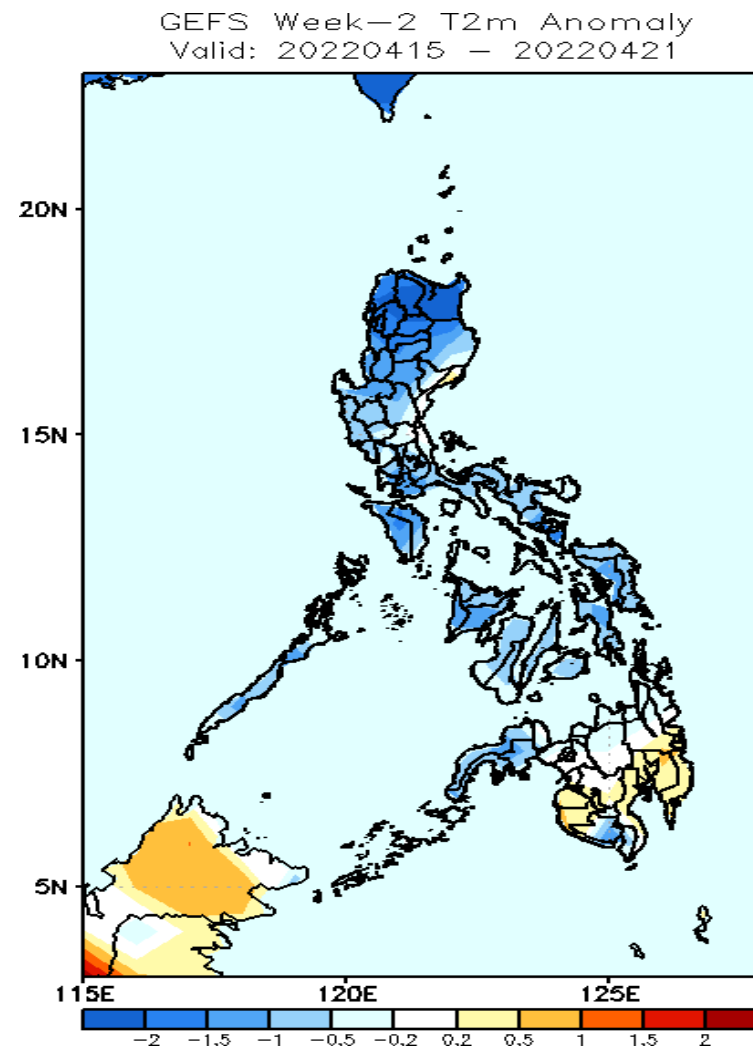
Low probability of rainfall to exceed 200mm in most parts of the country during the forecast period.

GEFS Week-1 & 2 Forecasts: T2m Anomaly



2m Temperature Week 1: Apr 08-14, 2022

Slightly cooler to cooler than average surface air temperature will likely experience in Northern Luzon, Zambales, most parts of Southern Luzon, Bicol Region and in eastern & central Mindanao while average to slightly warmer for the rest of Luzon and Mindanao during the forecast period.



2m Temperature Week 2: Apr 15-21, 2022

Cooler than average surface air temperature will likely experience in most parts of Luzon, Visayas, Zamboanga Peninsula and South Cotabato while average to slightly warmer for the rest of Mindanao during the forecast period.