



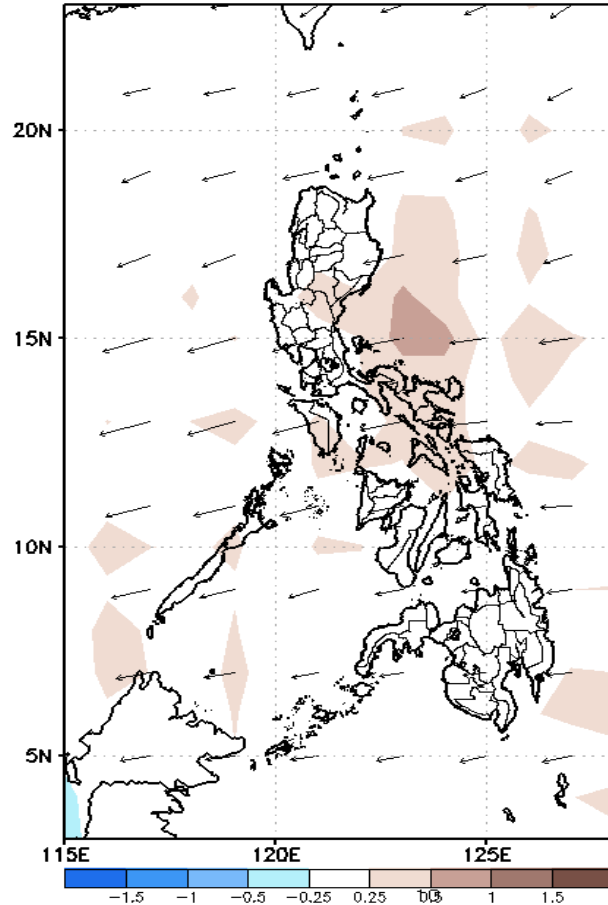
# Week 1 & Week 2 Forecast for the Philippines using GEFS Model



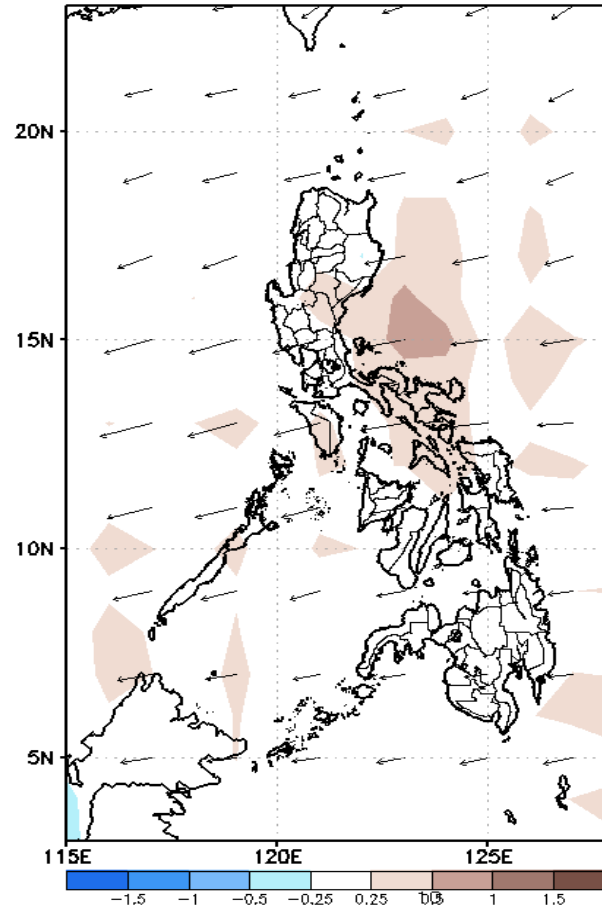
# GEFS Week-1 Forecasts: Divergence & Wind Anomaly

**Week 1: : July 08-14 2021**

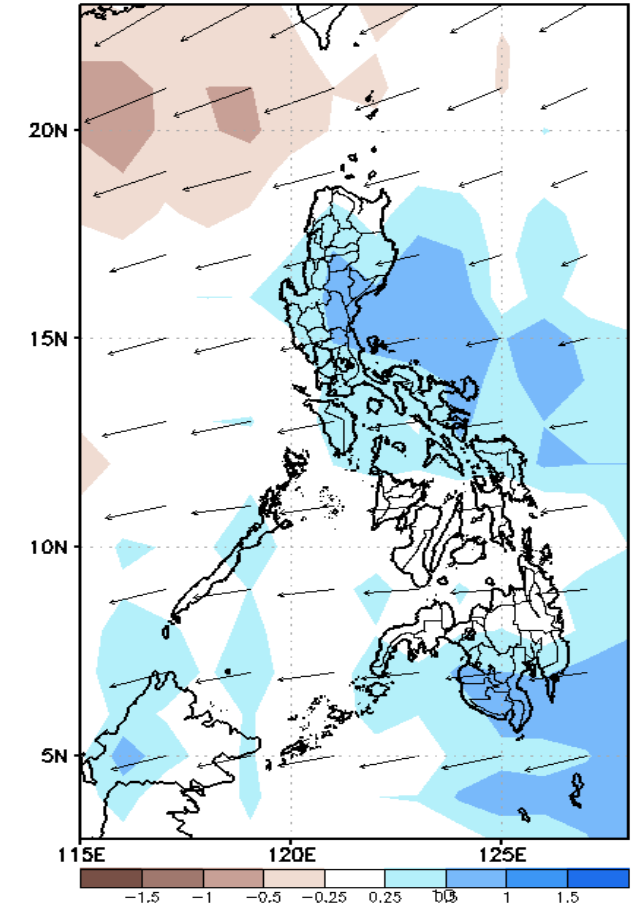
GEFS Week-1 850-hPa Divergence and Wind Anom  
Valid: 20210708 - 20210714



GEFS Week-1 700-hPa Divergence and Wind Anom  
Valid: 20210708 - 20210714



GEFS Week-1 200-hPa Divergence and Wind Anom  
Valid: 20210708 - 20210714

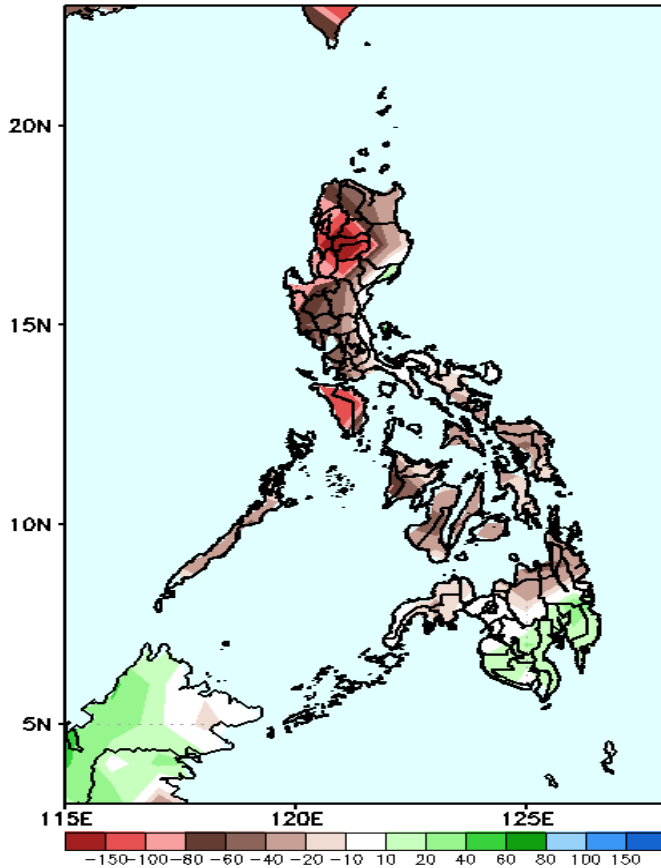


Upper and low level Divergence suggest likelihood of precipitation in most parts of Luzon, Eastern Visayas, Davao region and SOCKSARGEN. Easterlies affecting the rest of the country. Attributing to warmer temperature and higher heat index during the forecast period.

# Precipitation Anomaly and Exceedance Probability > 25/50 mm

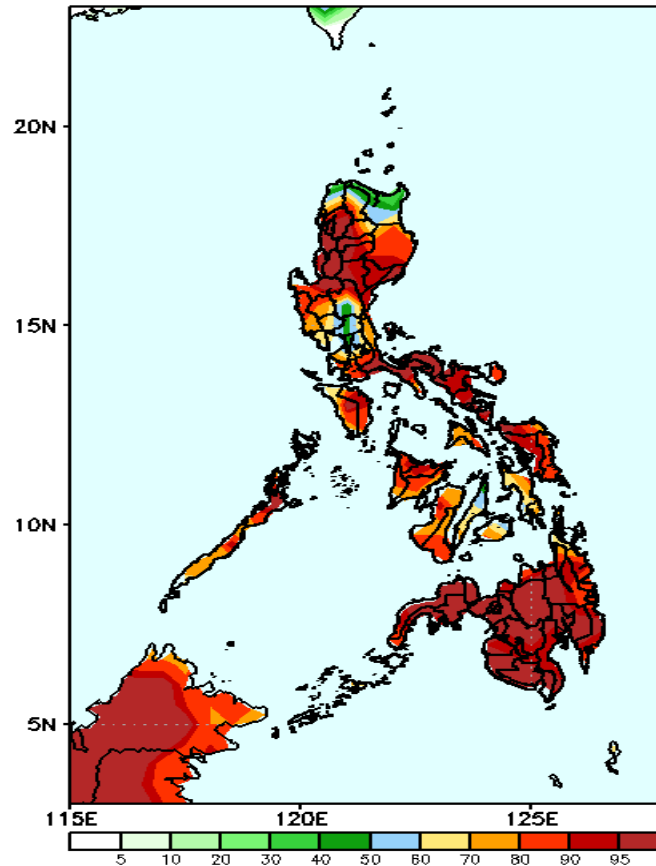
**Week 1: : July 08-14 2021**

GEFS Week-1 Precip Anomaly  
Valid: 20210708 – 20210714



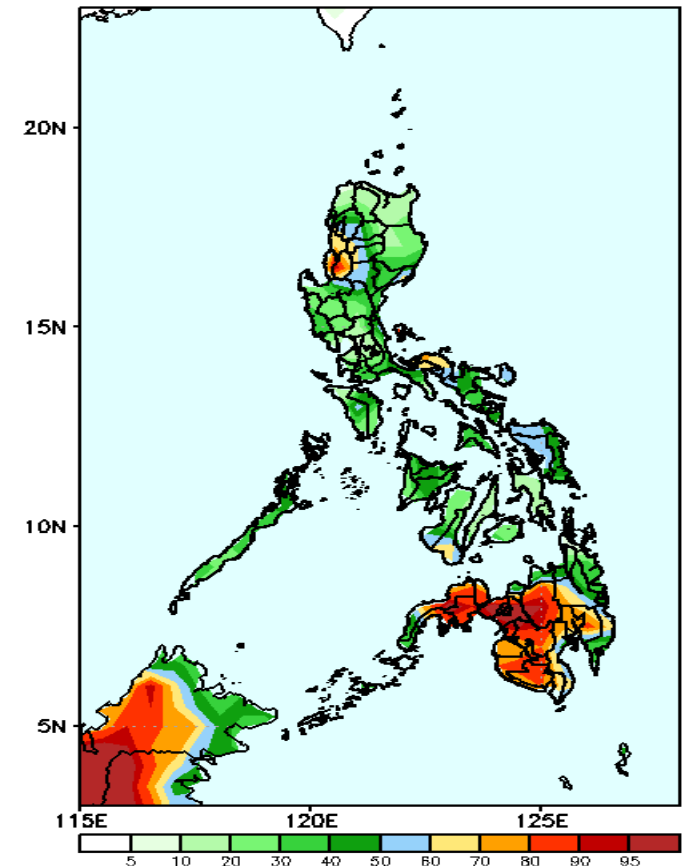
Rainfall deficit of up to 150mm is expected in Cordillera & Ilocos Region and Mindoro and 40-80mm for the rest of the country except for southern Mindanao with 40-80mm increase of rainfall during the forecast period.

GEFS Week-1 Exceedance Prob. > 25mm  
Valid: 20210708 – 20210714



High probability of rainfall to exceed 25mm in most parts of the country during the forecast period.

GEFS Week-1 Exceedance Prob. > 50mm  
Valid: 20210708 – 20210714



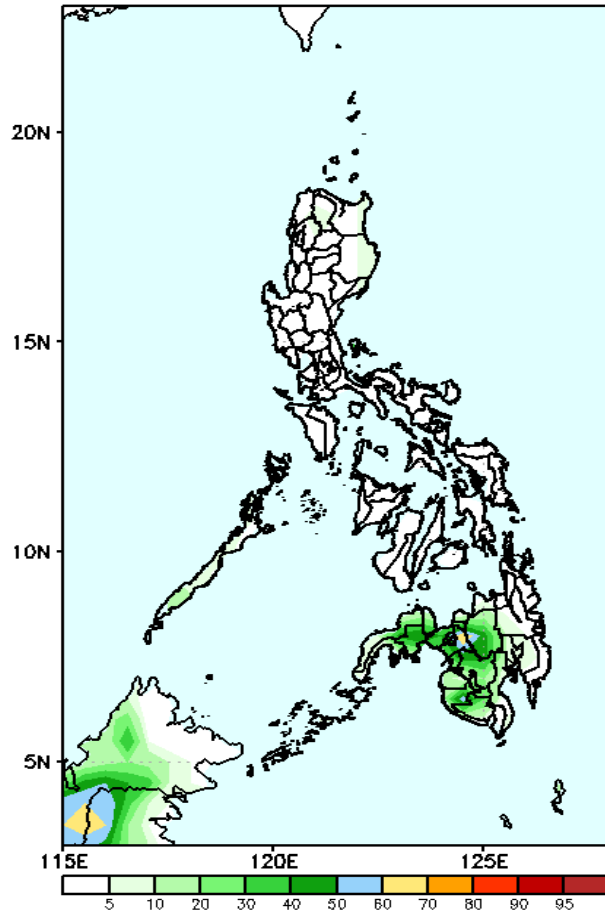
High probability of rainfall to exceed 50mm in La Union, Benguet and most parts of Mindanao (except CARAGA) while less likely for the rest of the country during the forecast period.



# Exceedance Probability > 100/150/200 mm

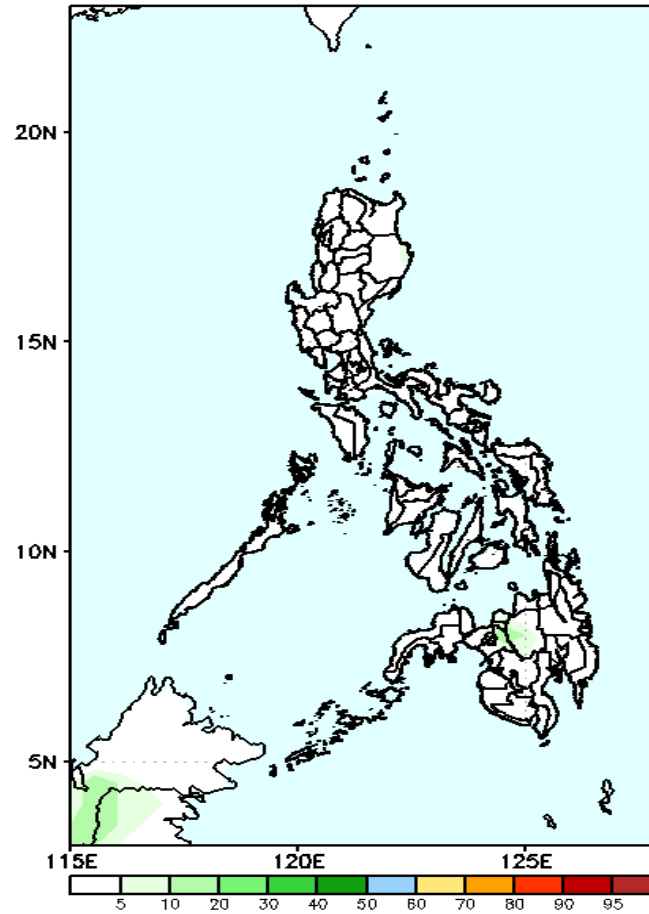
**Week 1: : July 08-14 2021**

GEFS Week-1 Exceedance Prob. > 100mm  
Valid: 20210708 - 20210714



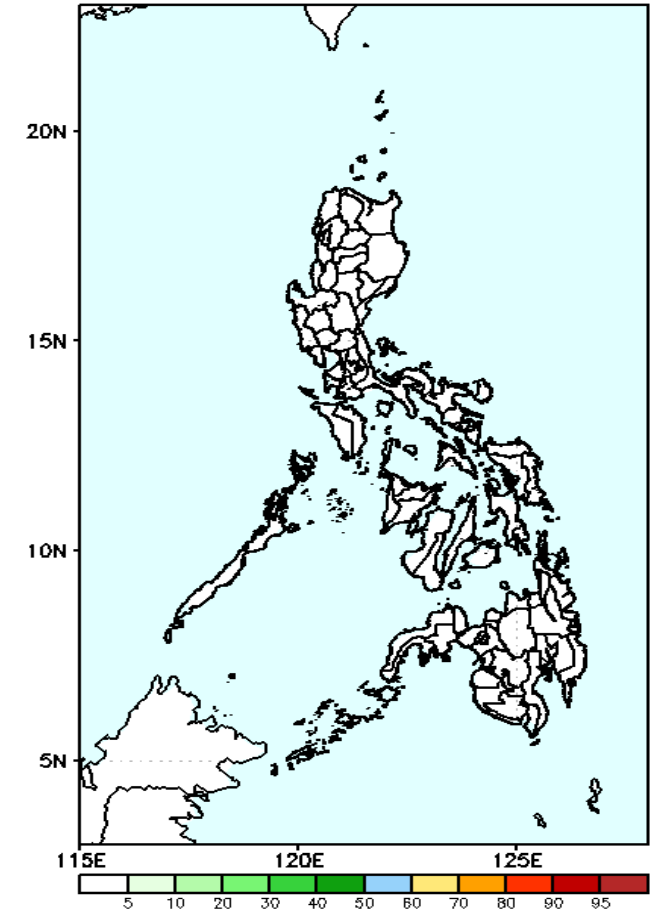
Less probability of rainfall to exceed 100mm in most parts of the country during the forecast period.

GEFS Week-1 Exceedance Prob. > 150mm  
Valid: 20210708 - 20210714



Less probability of rainfall to exceed 150mm in most parts of the country during the forecast period.

GEFS Week-1 Exceedance Prob. > 200mm  
Valid: 20210708 - 20210714



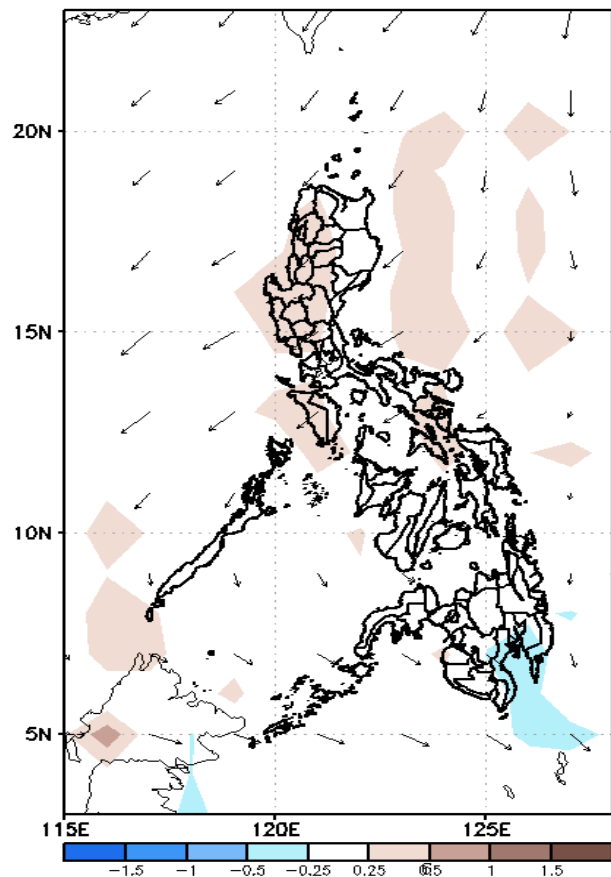
Less probability of rainfall to exceed 200mm in most parts of the country during the forecast period.



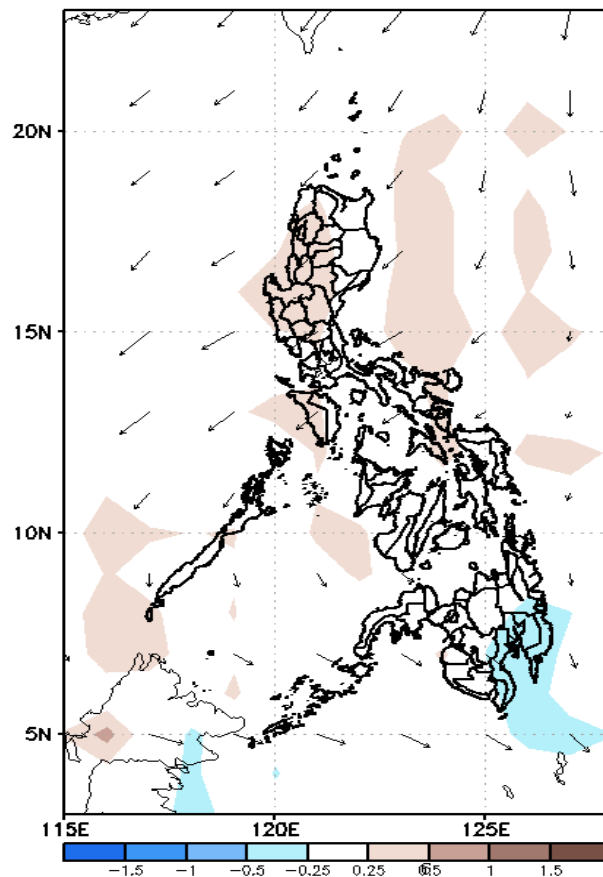
# GEFS Week-2 Forecasts: Divergence & Wind Anomaly

**Week 2: July 15-21, 2021**

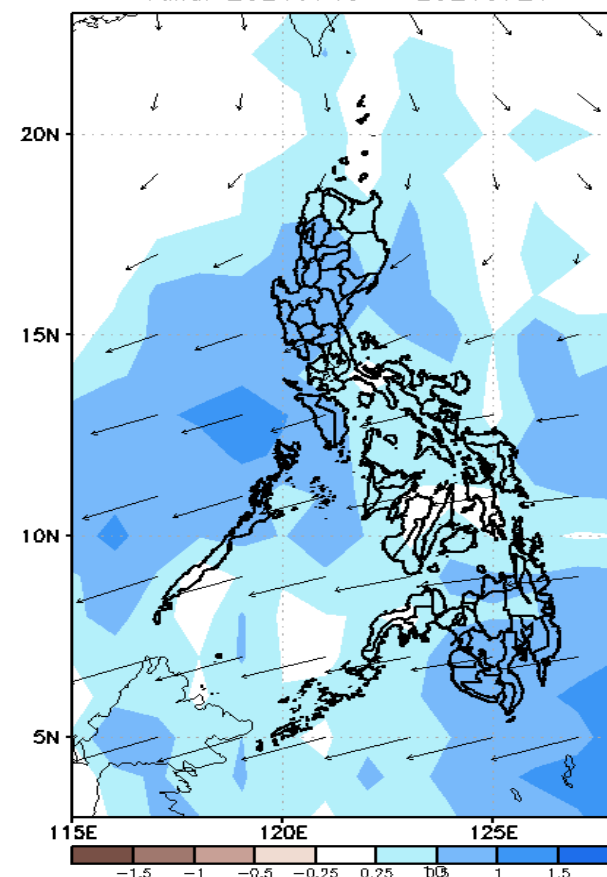
GEFS Week-2 850-hPa Divergence and Wind Anom  
Valid: 20210715 - 20210721



GEFS Week-2 700-hPa Divergence and Wind Anom  
Valid: 20210715 - 20210721



GEFS week-2 200-hPa Divergence and Wind Anom  
Valid: 20210715 - 20210721

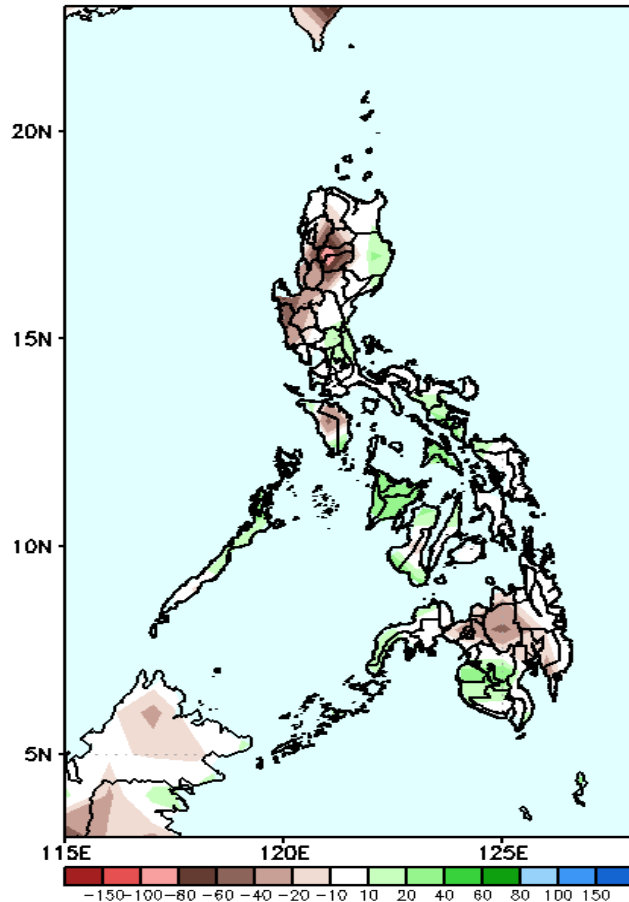


Upper and low level Divergence suggest likelihood of precipitation in most parts of the country. Southwest monsoon affecting parts of Western Luzon while Easterlies affecting the rest of the country. Attributing to warmer temperature and higher heat index; with humid environment(especially in the western section of the country) during the forecast period.

# Precipitation Anomaly and Exceedance Probability > 25/50 mm

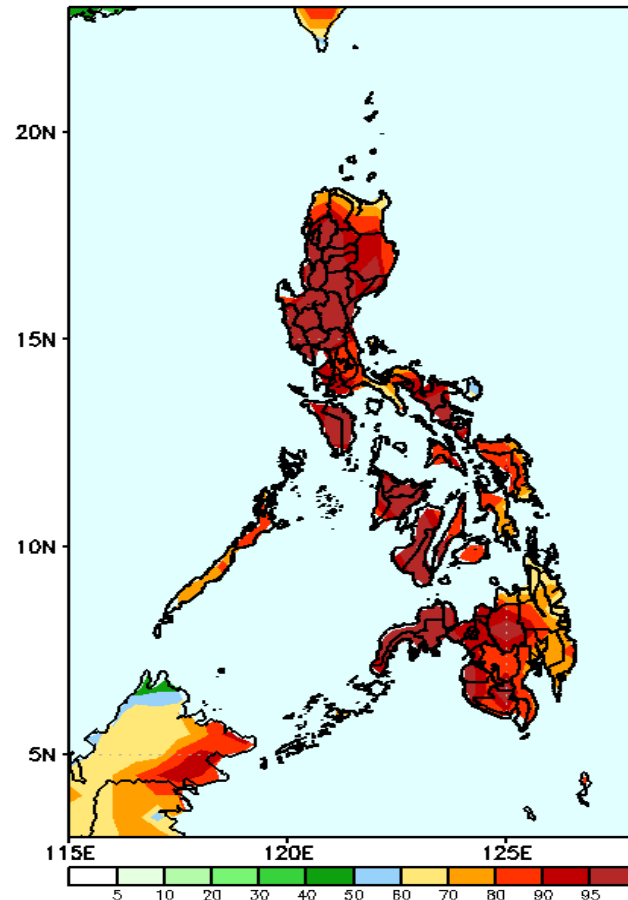
## Week 2: July 15-21, 2021

GEFS Week-2 Precip Anomaly  
Valid: 20210715 - 20210721



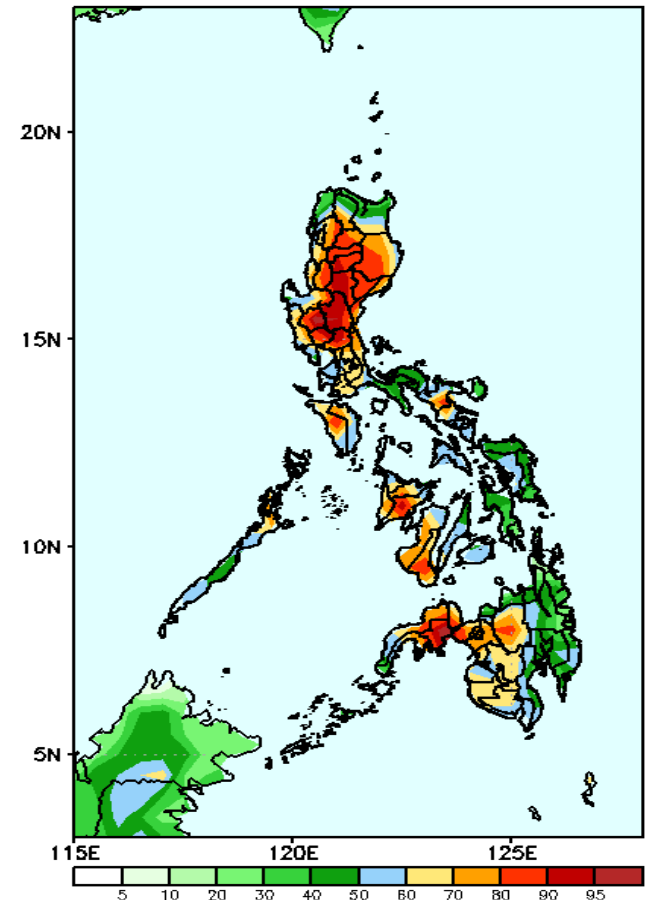
Rainfall deficit of 40-100mm is expected in western section of Luzon and Bukidnon while 40-80mm increase of rainfall in Panay Island, Masbate and MAguindanao during the forecast period.

GEFS Week-2 Exceedance Prob. > 25mm  
Valid: 20210715 - 20210721



High probability of rainfall to exceed 25mm in most parts of the country during the forecast period.

GEFS Week-2 Exceedance Prob. > 50mm  
Valid: 20210715 - 20210721



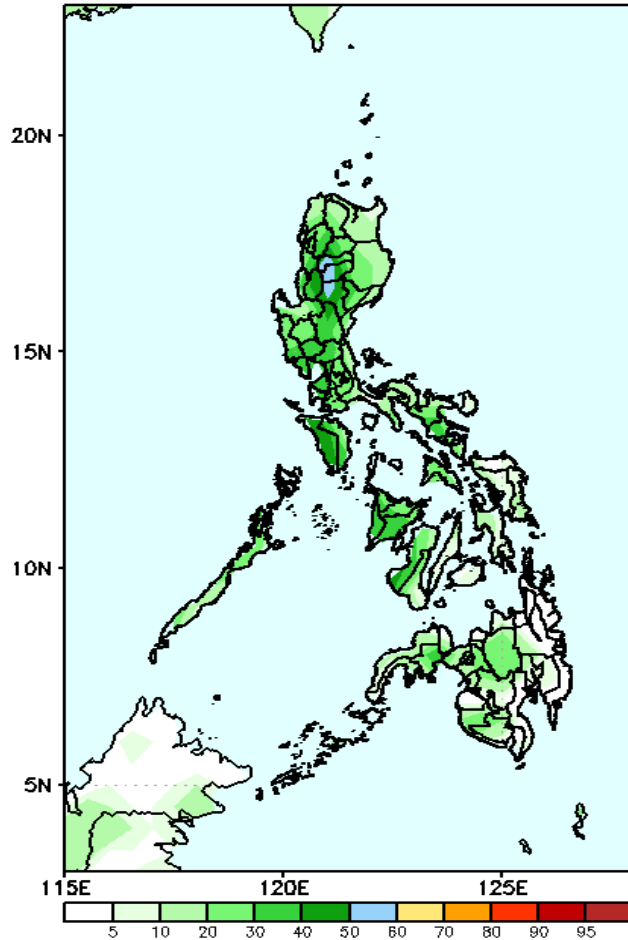
High probability of rainfall to exceed 50mm in most parts of Luzon and western parts of Visayas and Mindanao while less likely for the remaining parts of the country during the forecast period.



# Exceedance Probability > 100/150/200 mm

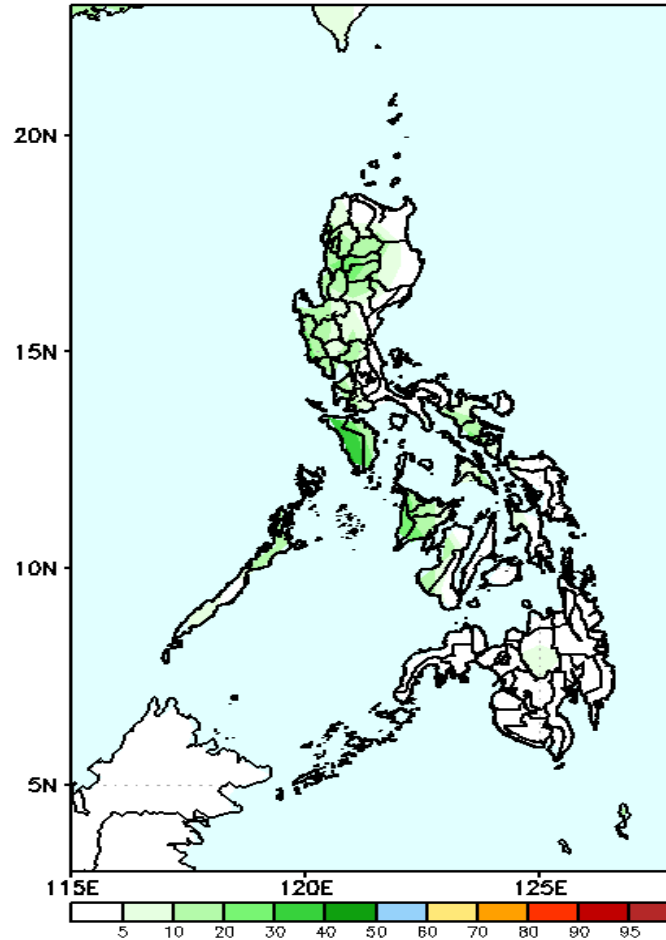
## Week 2: July 15-21, 2021

GEFS Week-2 Exceedance Prob. > 100mm  
Valid: 20210715 – 20210721



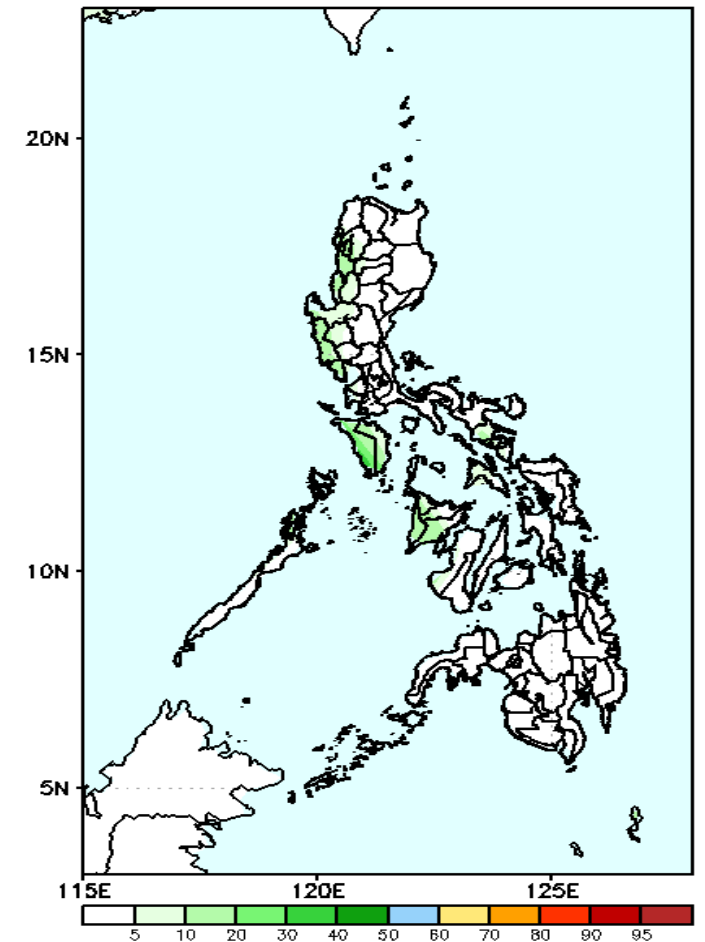
Less probability of rainfall to exceed 100mm in most parts of the country during the forecast period.

GEFS Week-2 Exceedance Prob. > 150mm  
Valid: 20210715 – 20210721



Less probability of rainfall to exceed 150mm in most parts of the country during the forecast period.

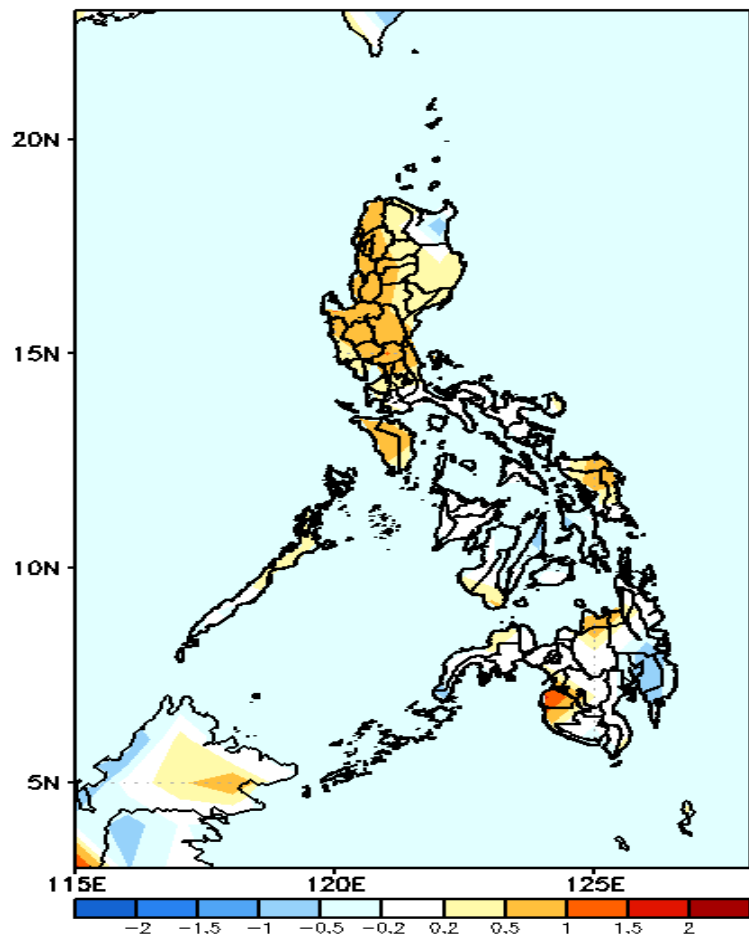
GEFS Week-2 Exceedance Prob. > 200mm  
Valid: 20210715 – 20210721



Less probability of rainfall to exceed 200mm in most parts of the country during the forecast period.

# GEFS Week-1 & 2 Forecasts: T2m Anomaly

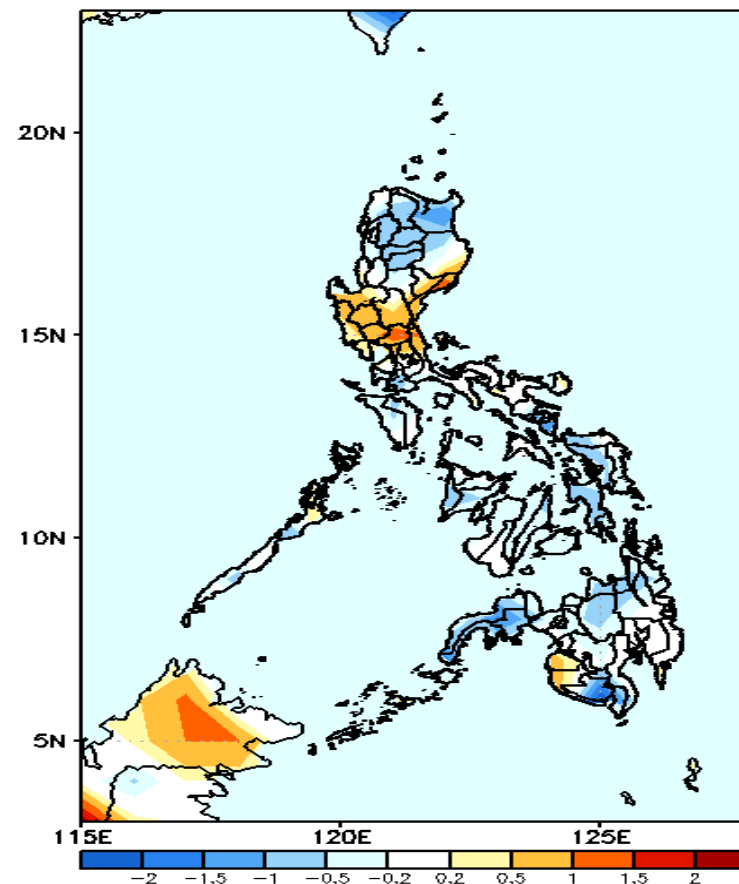
GEFS Week-1 T2m Anomaly  
Valid: 20210708 – 20210714



## 2m Temperature Week 1: July 08-14 2021

Average to slightly warmer than average surface air temperature will likely experience in most parts of the country during the forecast period.

GEFS Week-2 T2m Anomaly  
Valid: 20210715 – 20210721



## 2m Temperature Week 2: July 15-21, 2021

Average to slightly cooler than average surface air temperature will likely experience in most parts of the country except in Central Luzon, Pangasinan and Quirino where slightly warmer to warmer than average temperature is expected during the forecast period.