



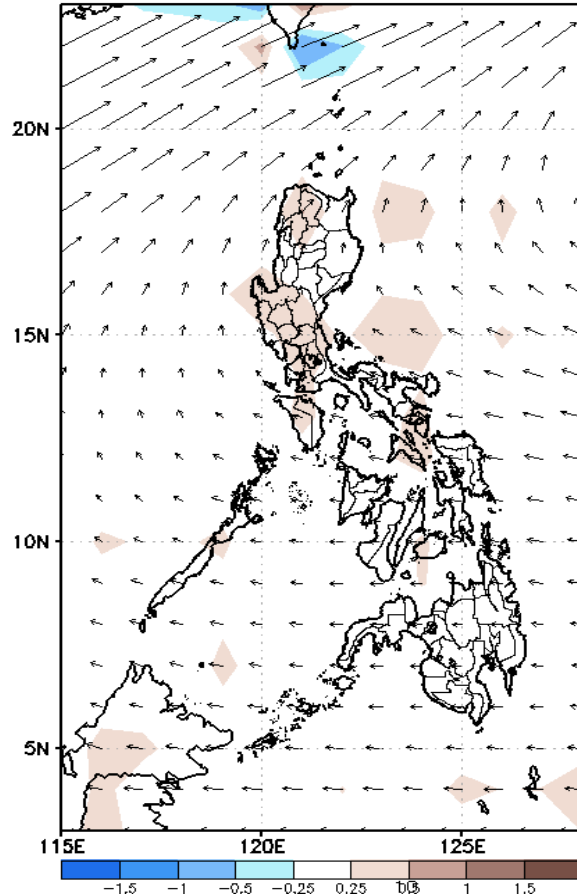
Week 1 & Week 2 Forecast for the Philippines using GEFS Model



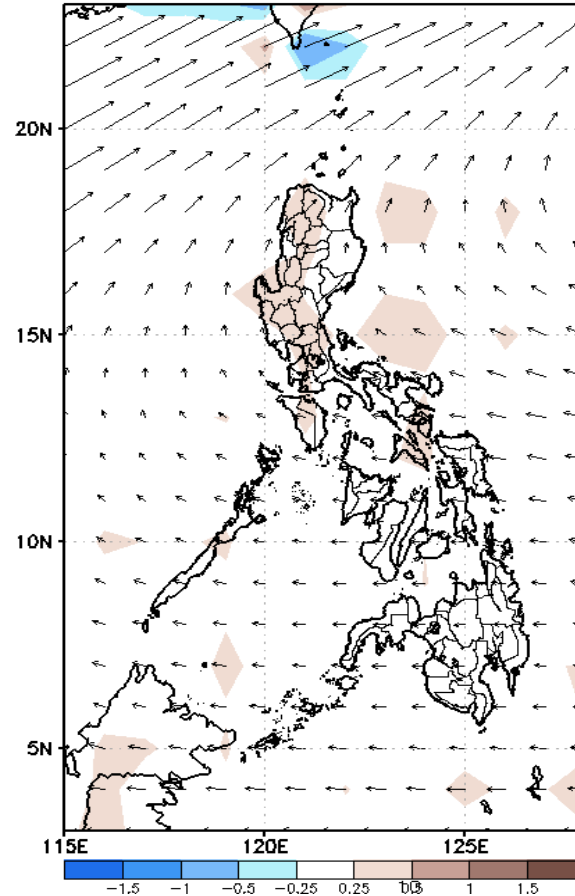
GEFS Week-1 Forecasts: Wind Anomaly Forecast

Week 1: Jun 08-14, 2022

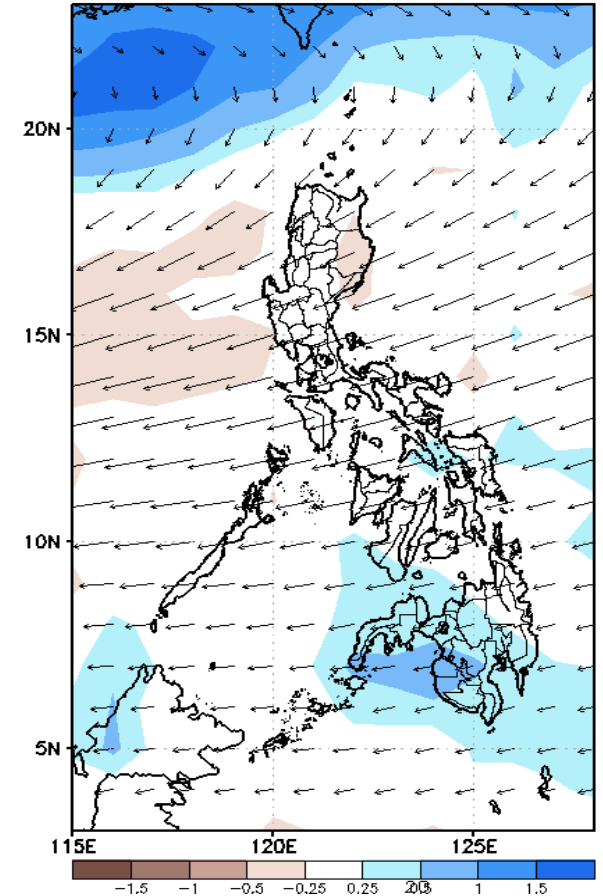
GEFS Week-1 850-hPa Divergence and Wind Anomaly
Valid: 20220608 - 20220614



GEFS Week-1 700-hPa Divergence and Wind Anomaly
Valid: 20220608 - 20220614



GEFS Week-1 200-hPa Divergence and Wind Anomaly
Valid: 20220608 - 20220614

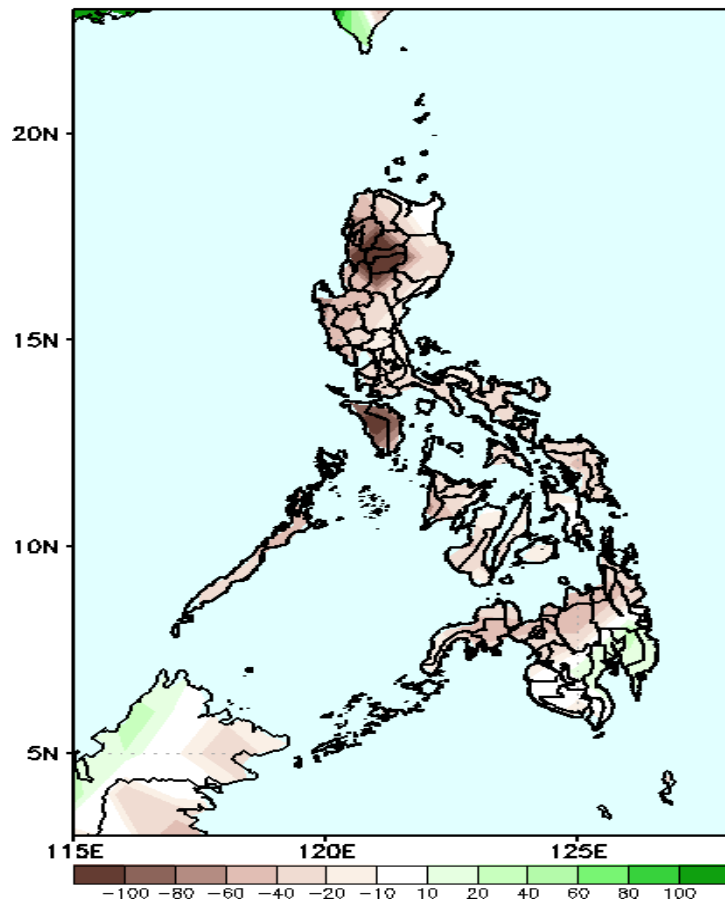


Southwest Monsoon is forecasted to affect Extreme Northern Luzon while Easterlies affecting the rest of the country during the forecast period

Precipitation Anomaly and Exceedance Probability > 25/50 mm

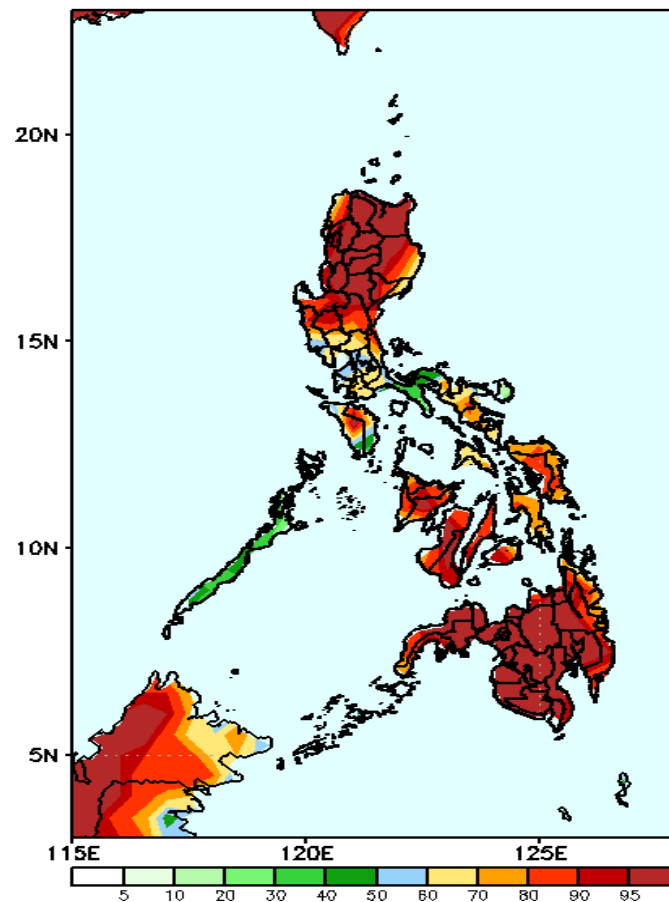
Week 1: Jun 08-14, 2022

GEFS Week-1 Precip Anomaly
Valid: 20220608 - 20220614



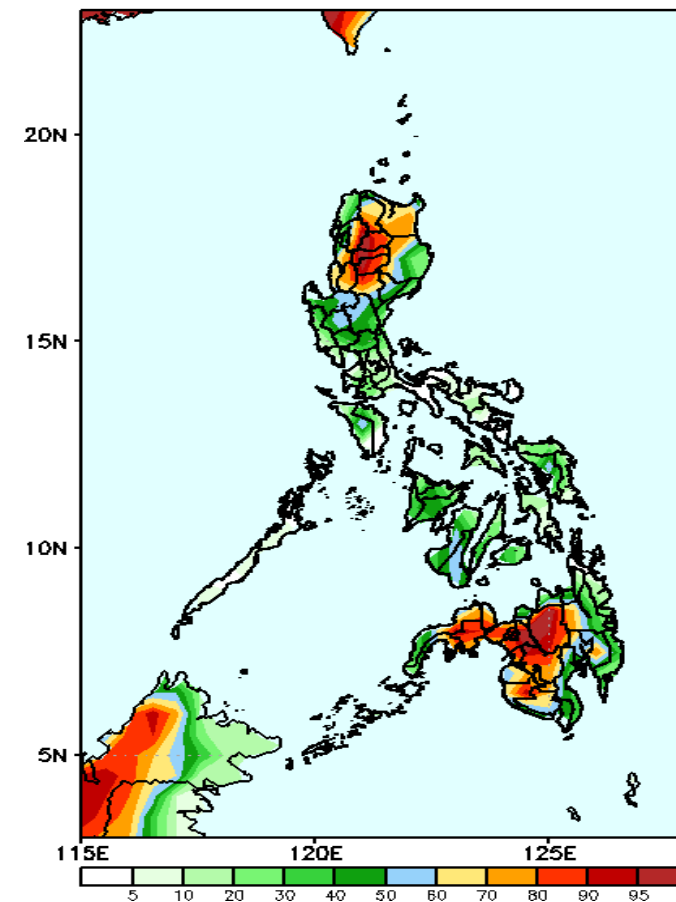
Rainfall deficit of more than 100mm is expected in Cordillera Region & Mindoro and 40-100mm for the rest of the country during the forecast period.

GEFS Week-1 Exceedance Prob. > 25mm
Valid: 20220608 - 20220614



High probability of rainfall to exceed 25mm in most parts of the country except Palawan during the forecast period.

GEFS Week-1 Exceedance Prob. > 50mm
Valid: 20220608 - 20220614

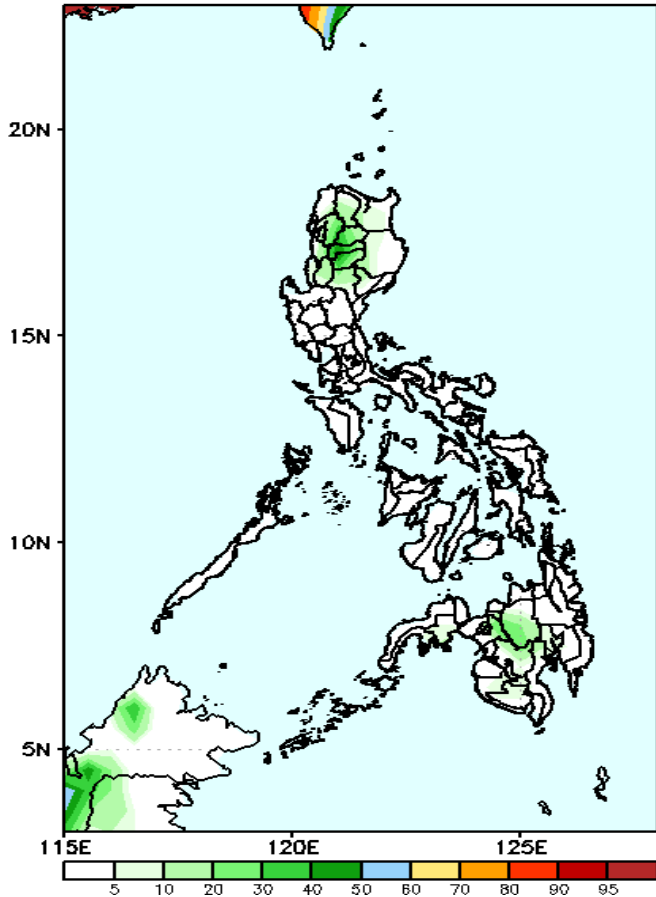


High probability of rainfall to exceed 50mm in most parts of Northern Luzon and Mindanao while less likely for the rest the country during the forecast period.

Exceedance Probability > 100/150/200 mm

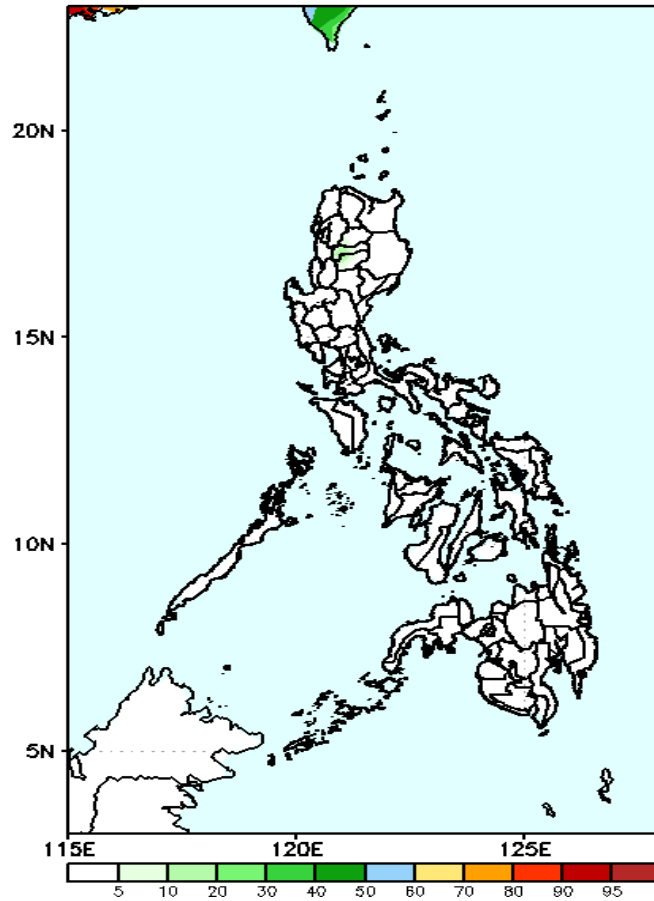
Week 1: Jun 08-14, 2022

GEFS Week-1 Exceedance Prob. > 100mm
Valid: 20220608 – 20220614



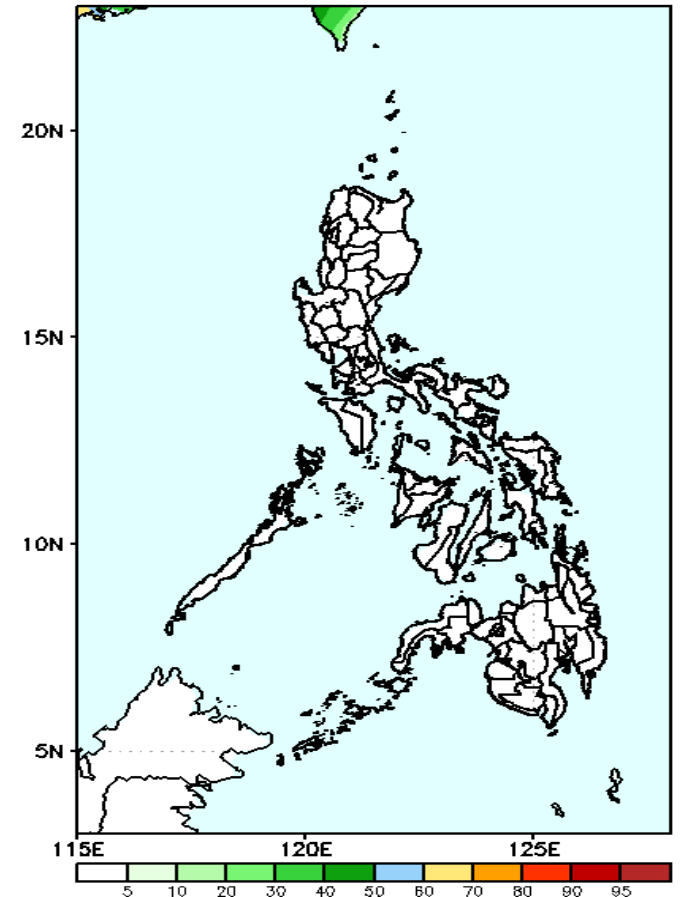
Low probability of rainfall to exceed 100mm in most parts of the country during the forecast period.

GEFS Week-1 Exceedance Prob. > 150mm
Valid: 20220608 – 20220614



Low probability of rainfall to exceed 150mm in most parts of the country during the forecast period.

GEFS Week-1 Exceedance Prob. > 200mm
Valid: 20220608 – 20220614



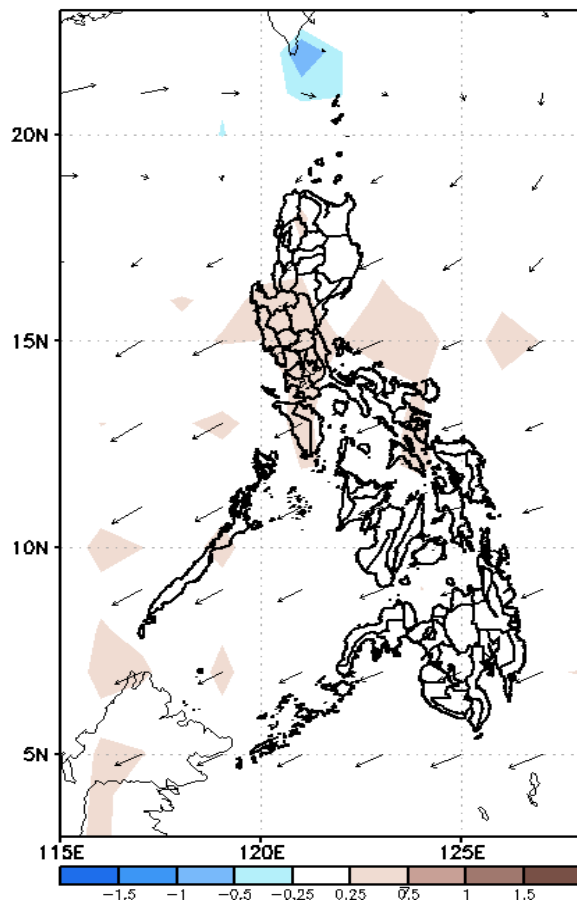
Low probability of rainfall to exceed 200mm in most parts of the country during the forecast period.



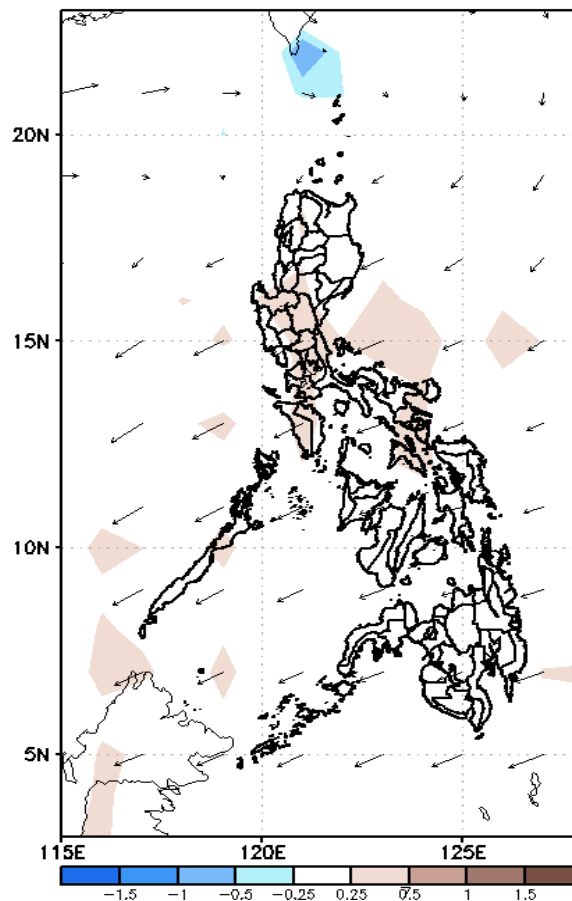
GEFS Week-2 Forecasts: Wind Anomaly Forecast

Week 2: Jun 15-21, 2022

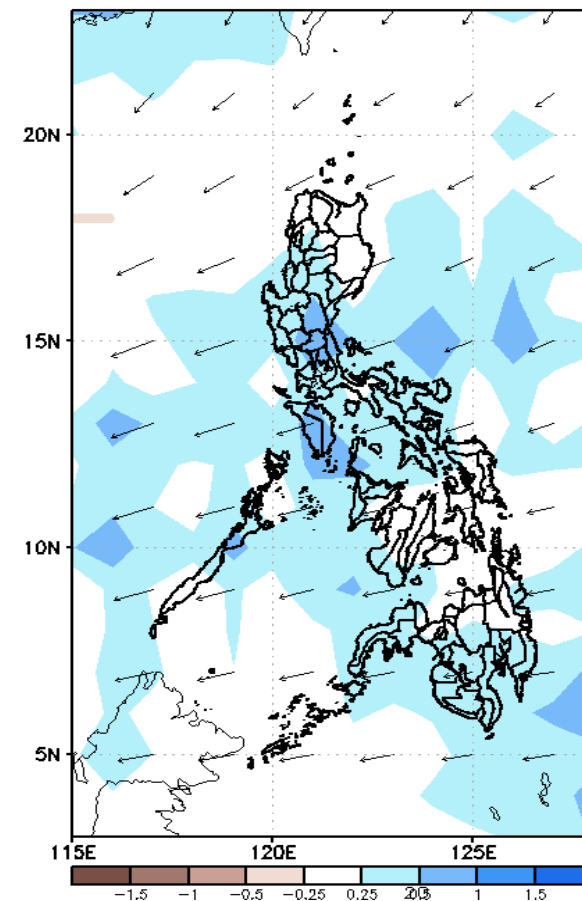
GEFS Week-2 850-hPa Divergence and Wind Anomaly
Valid: 20220615 - 20220621



GEFS Week-2 700-hPa Divergence and Wind Anomaly
Valid: 20220615 - 20220621



GEFS week-2 200-hPa Divergence and Wind Anomaly
Valid: 20220615 - 20220621



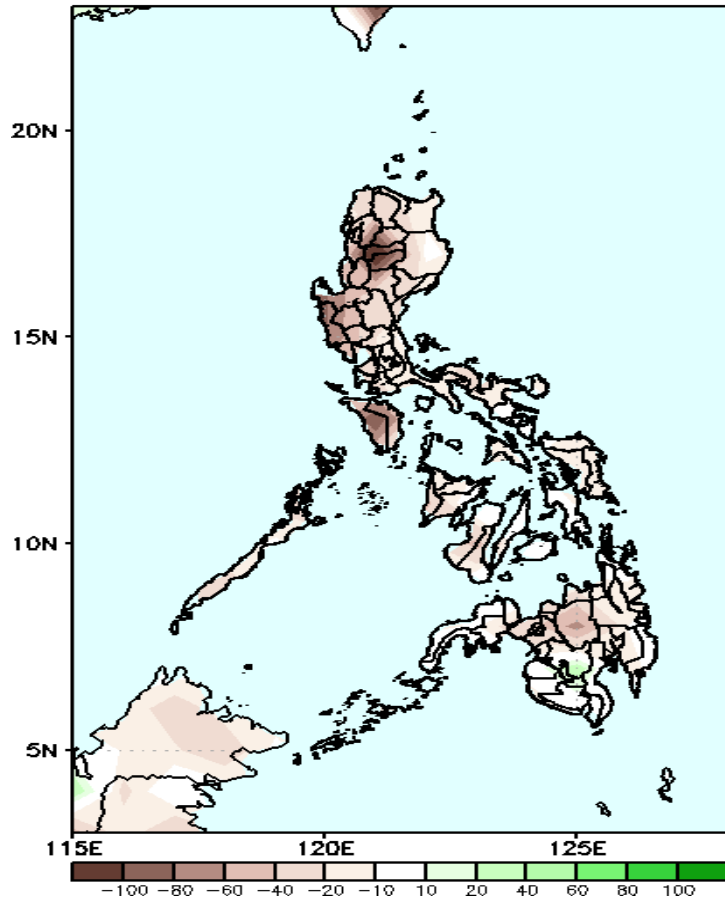
Southwest Monsoon is forecasted to affect Extreme Northern Luzon while Easterlies affecting the rest of the country during the forecast period.

ing
ASA

Precipitation Anomaly and Exceedance Probability > 25/50 mm

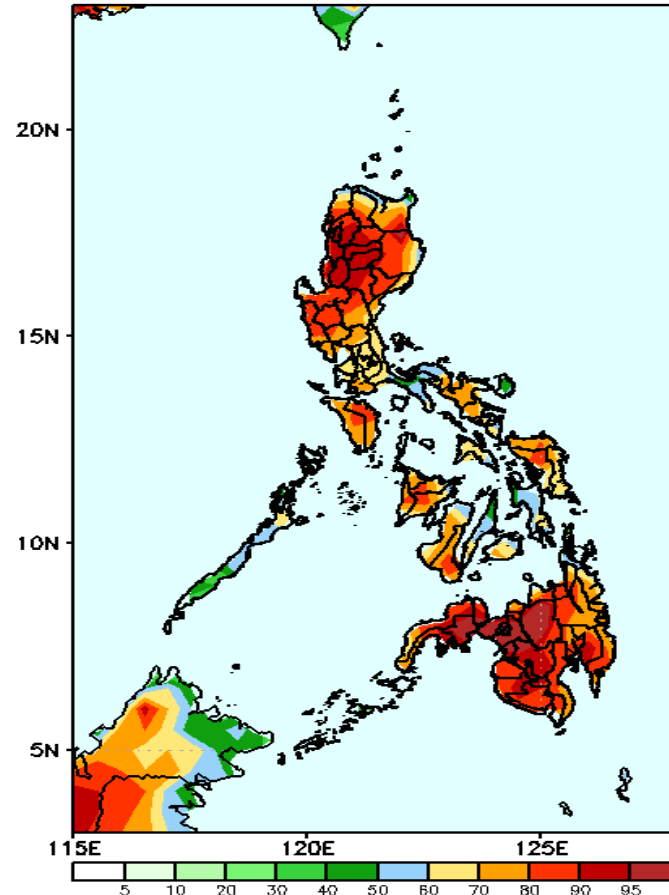
Week 2: Jun 15-21, 2022

GEFS Week-2 Precip Anomaly
Valid: 20220615 - 20220621



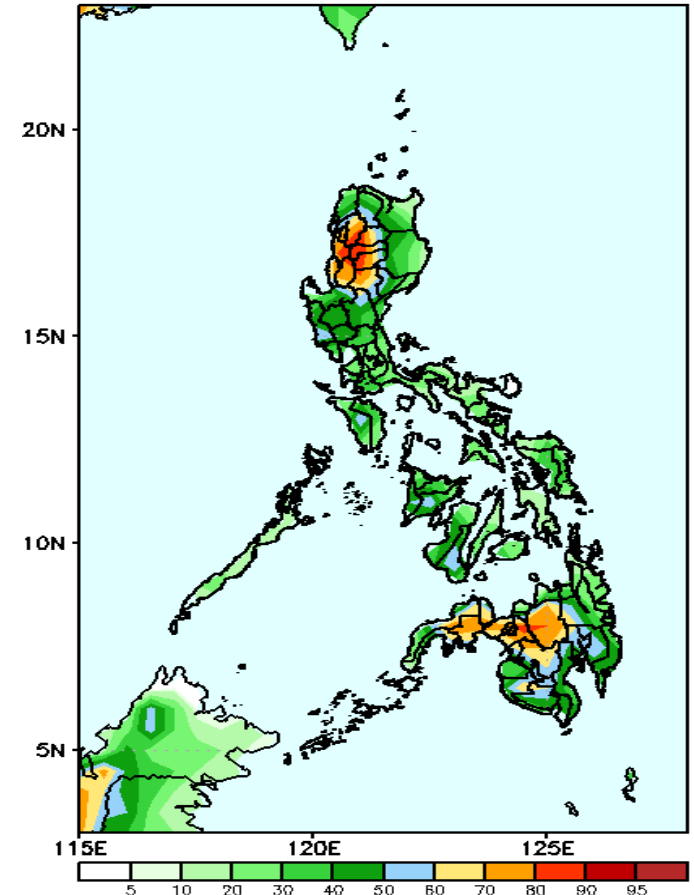
Rainfall deficit of 40-90mm is expected in most parts of the country during the forecast period.

GEFS Week-2 Exceedance Prob. > 25mm
Valid: 20220615 - 20220621



High probability of rainfall to exceed 25mm in most parts of the country during the forecast period.

GEFS Week-2 Exceedance Prob. > 50mm
Valid: 20220615 - 20220621

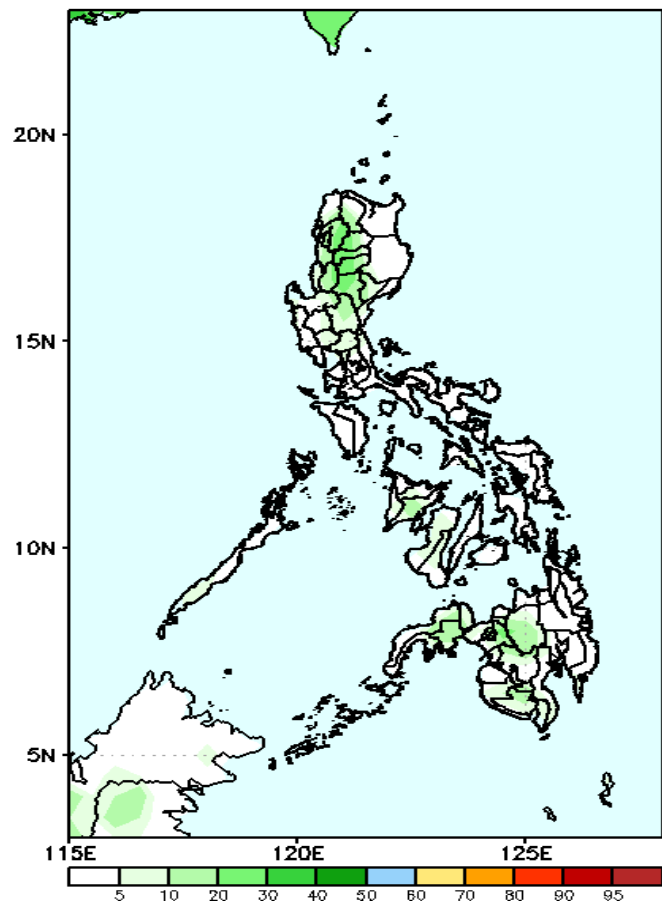


High probability of rainfall to exceed 50mm in most parts of Cordillera region, La Union, Nueva Vizcaya, Central Mindanao, Lanao provinces and Zamboanga del Sur while less likely for the rest of the country during the forecast period.

Exceedance Probability > 100/150/200 mm

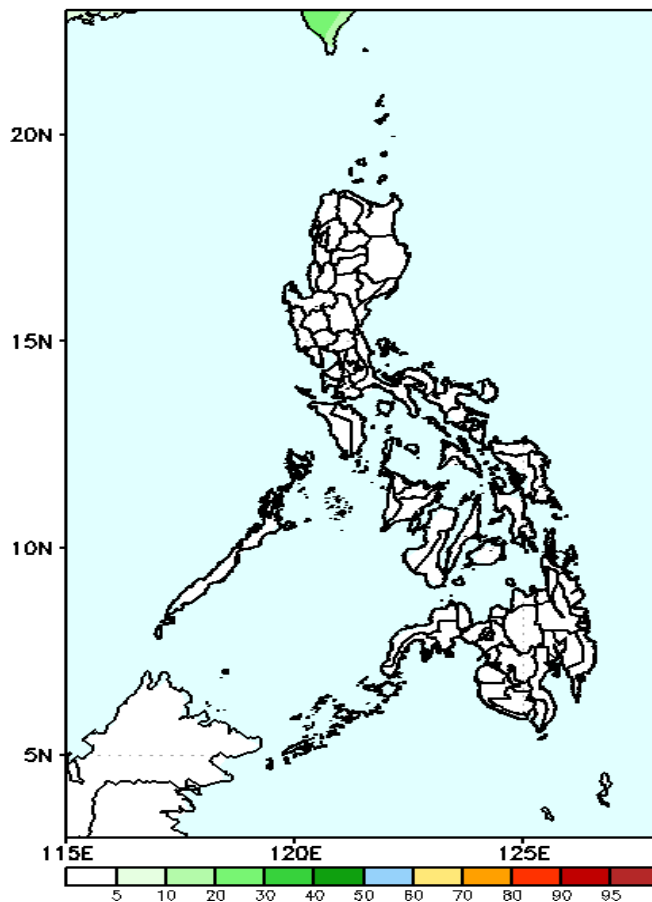
Week 2: Jun 15-21, 2022

GEFS Week-2 Exceedance Prob. > 100mm
Valid: 20220615 - 20220621



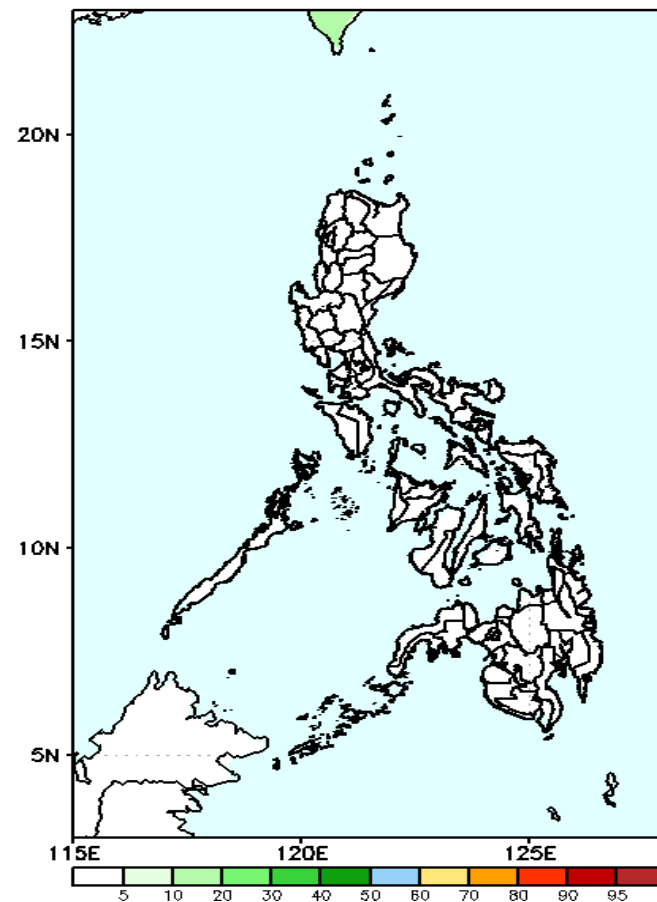
Low probability of rainfall to exceed 100mm in most parts of the country during the forecast period.

GEFS Week-2 Exceedance Prob. > 150mm
Valid: 20220615 - 20220621



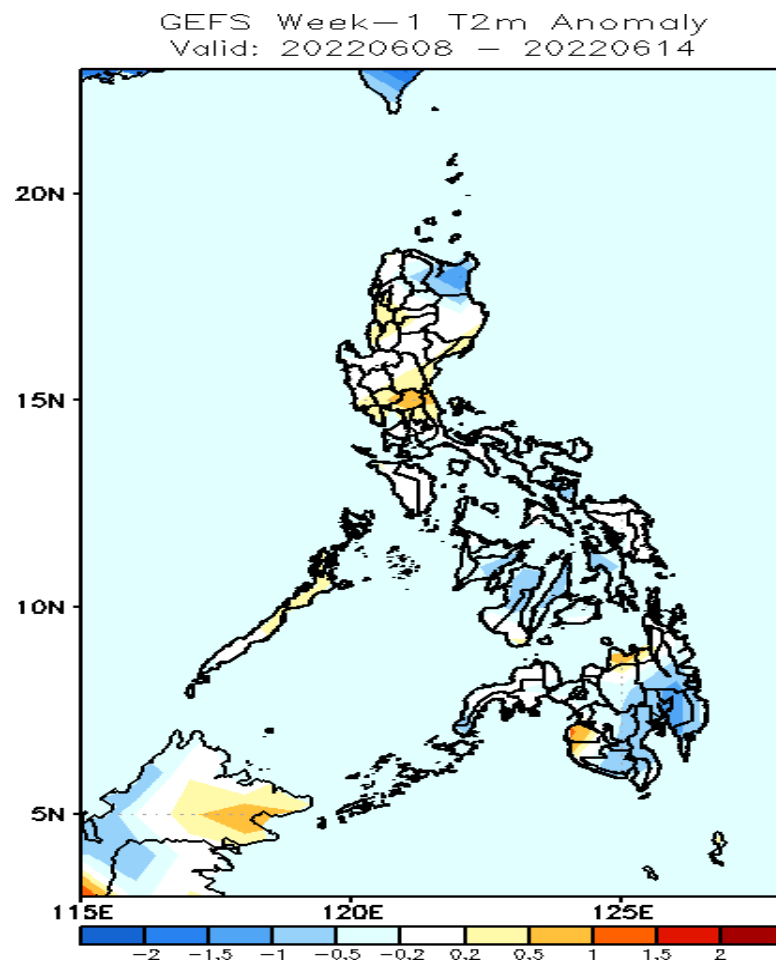
Low probability of rainfall to exceed 150mm in most parts of the country during the forecast period.

GEFS Week-2 Exceedance Prob. > 200mm
Valid: 20220615 - 20220621



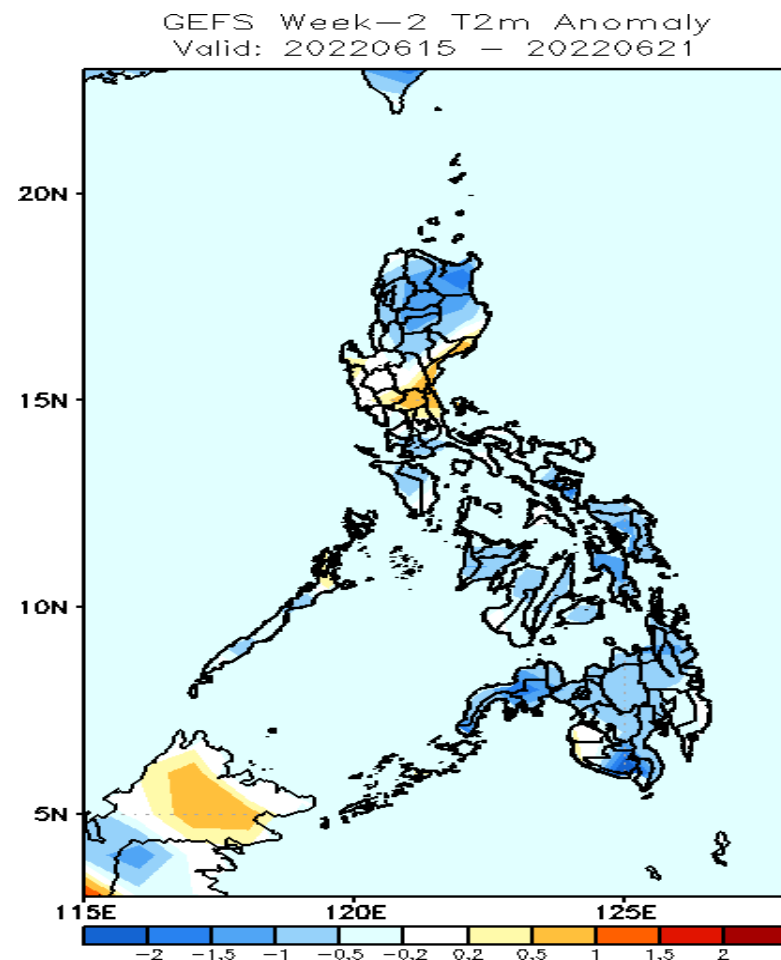
Low probability of rainfall to exceed 200mm in most parts of the country during the forecast period.

GEFS Week-1 & 2 Forecasts: T2m Anomaly



2m Temperature Week 1: Jun 08-14, 2022

Slightly cooler surface air temperature will likely experience in Apayao, Cagayan, Sorsogon, most parts of Visayas and Mindanao while average to slightly warmer is expected in most parts of Luzon, Misamis Oriental, Maguindanao and Sultan Kudarat during the forecast period.



2m Temperature Week 2: Jun 15-21, 2022

Slightly cooler to cooler surface air temperature will likely experience in most parts of the country except in Central Luzon where average to slightly warmer temperature is more likely during the forecast period.