



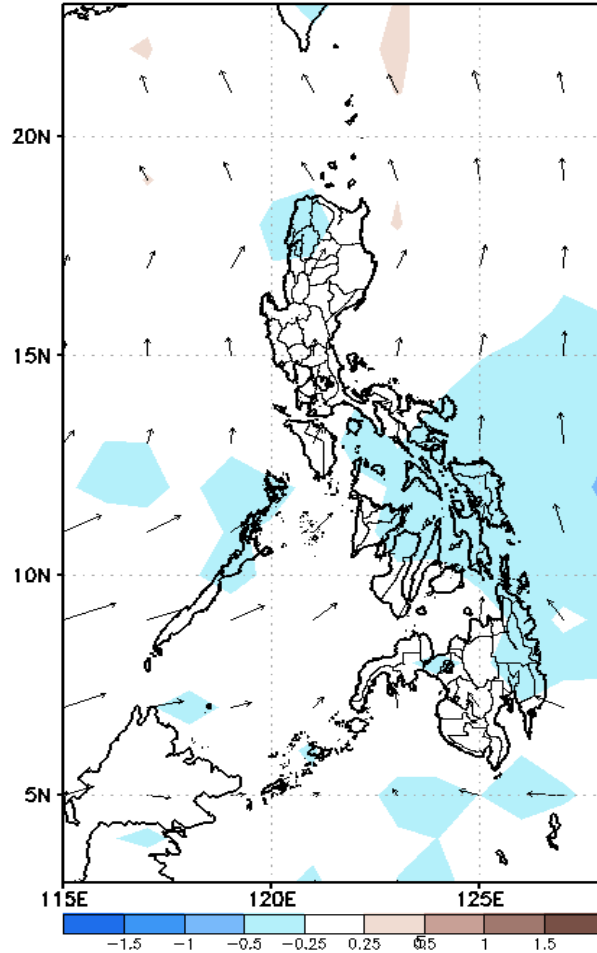
Week 1 & Week 2 Forecast for the Philippines using GEFS Model



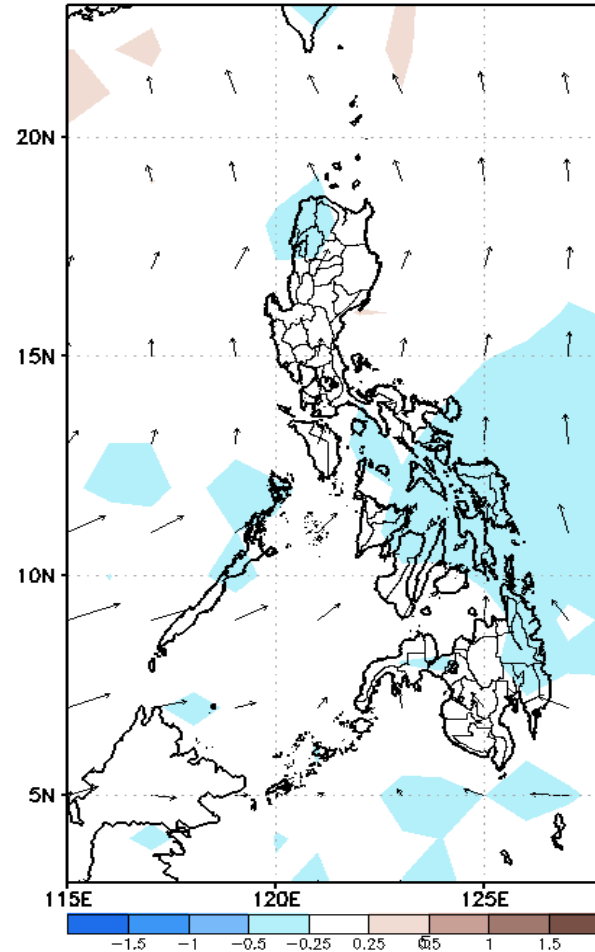
GEFS Week-1 Forecasts: Divergence & Wind Anomaly

Week 1: October 08-14, 2020

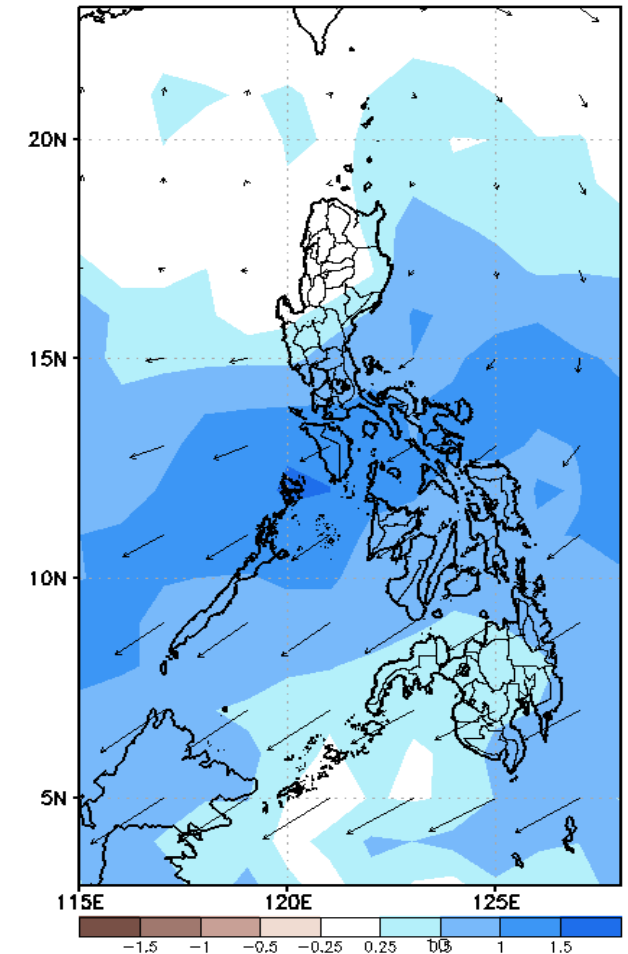
GEFS Week-1 850-hPa Divergence and Wind Anomaly
Valid: 20201008 - 20201014



GEFS Week-1 700-hPa Divergence and Wind Anomaly
Valid: 20201008 - 20201014



GEFS Week-1 200-hPa Divergence and Wind Anomaly
Valid: 20201008 - 20201014

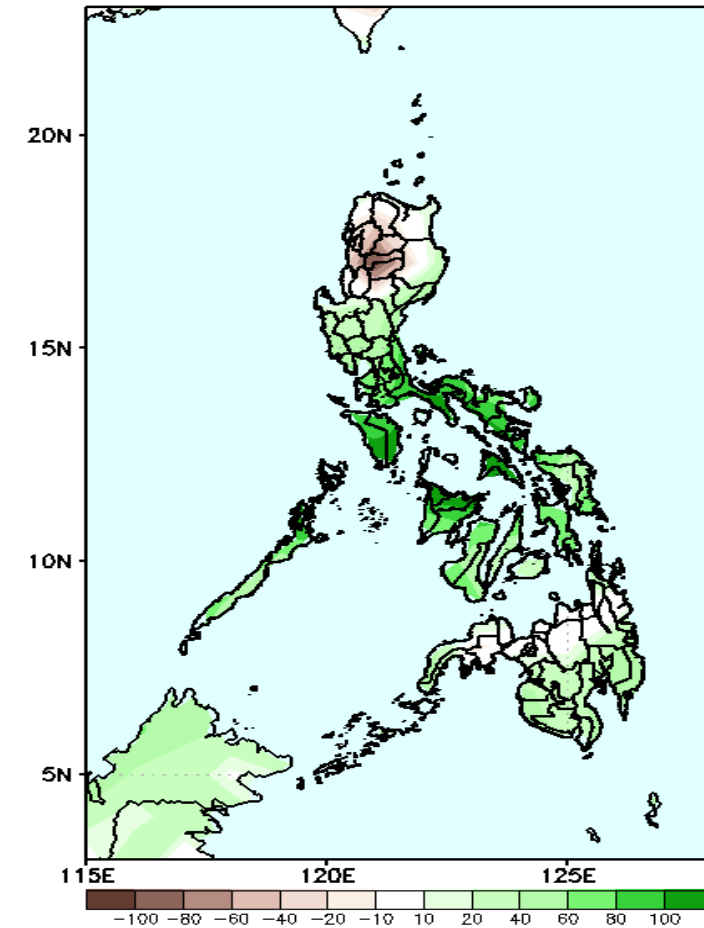


Upper level (200hPa) Divergence suggest likelihood of precipitation in most parts of the country during the forecast period. Southwest monsoon affecting the western parts of Luzon and Visayas while easterlies affecting most parts of the country during the forecast period.

Precipitation Anomaly and Exceedance Probability > 25/50 mm

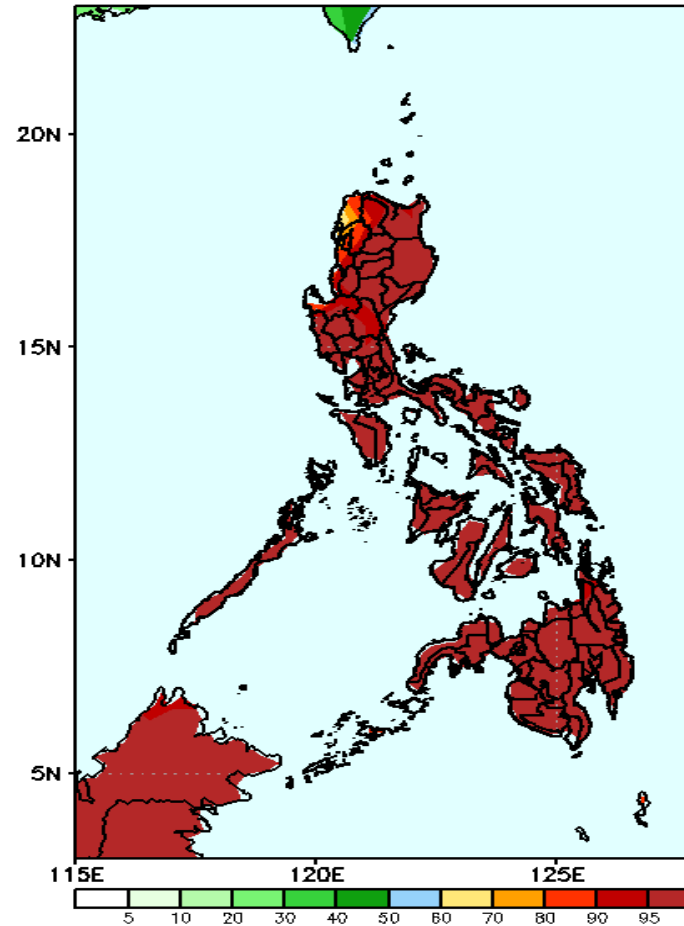
Week 1: October 08-14, 2020

GEFS Week-1 Precip Anomaly
Valid: 20201008 - 20201014



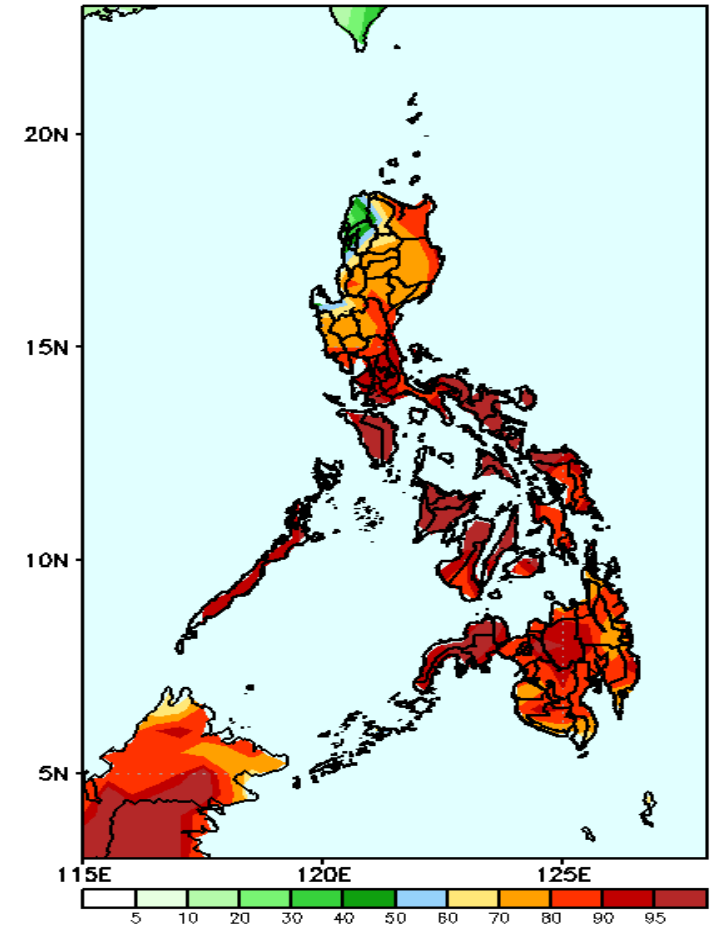
Rainfall deficit of 40-80mm in Cordillera Region is expected while increase of rainfall up to 100mm in southern parts of Luzon and Visayas and 20-40mm in Mindanao during the forecast period.

GEFS Week-1 Exceedance Prob. > 25mm
Valid: 20201008 - 20201014



High probability of rainfall to exceed 25mm in most parts the country is expected during the forecast period.

GEFS Week-1 Exceedance Prob. > 50mm
Valid: 20201008 - 20201014

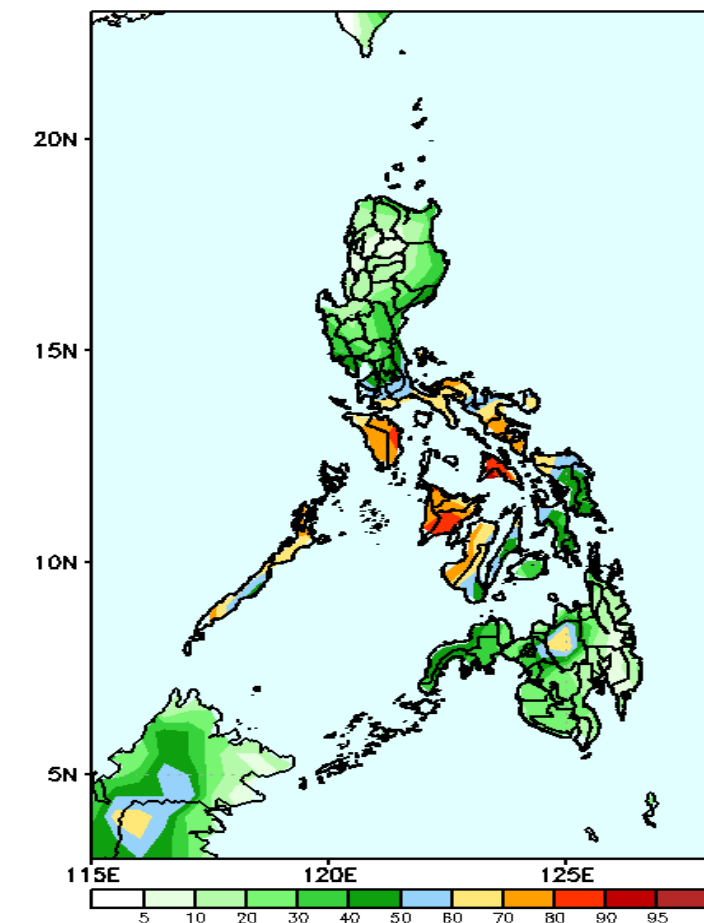


High probability of rainfall to exceed 50mm in most parts the country is expected except in Ilocos Norte and Abra where there is low probability during the forecast period.

Exceedance Probability > 100/150/200 mm

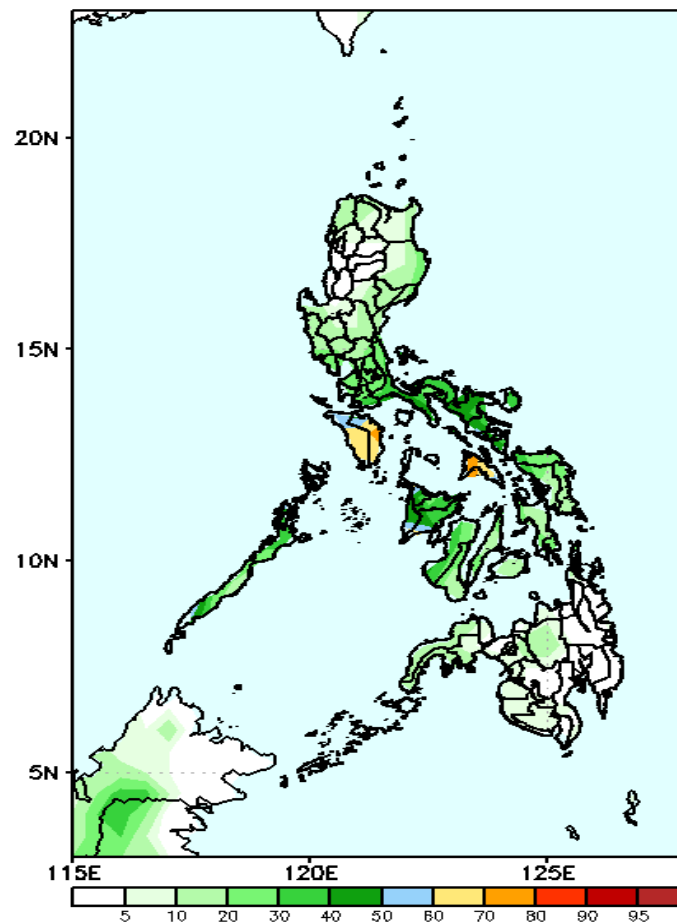
Week 1: October 08-14, 2020

GEFS Week-1 Exceedance Prob. > 100mm
Valid: 20201008 – 20201014



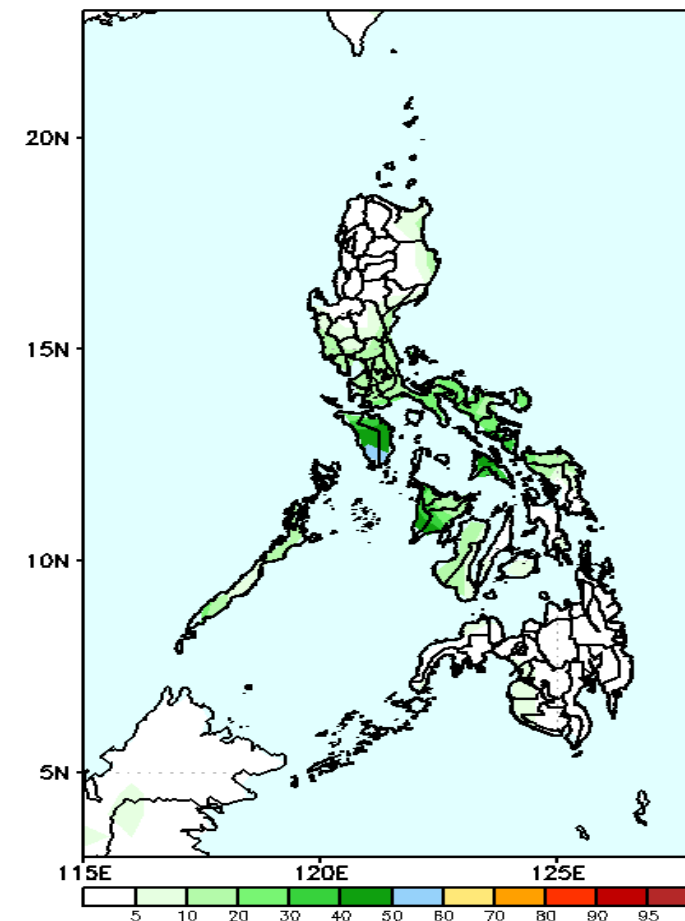
High probability of rainfall to exceed 100mm in Mindoro, Palawan, Bicol Region and most parts of western Visayas while 20-60% probability for the rest of the country during the forecast period.

GEFS Week-1 Exceedance Prob. > 150mm
Valid: 20201008 – 20201014



Less probability of rainfall to exceed 150mm in most parts of the country, except in Masbate and Mindoro where there is 60-85% probability during the forecast period.

GEFS Week-1 Exceedance Prob. > 200mm
Valid: 20201008 – 20201014



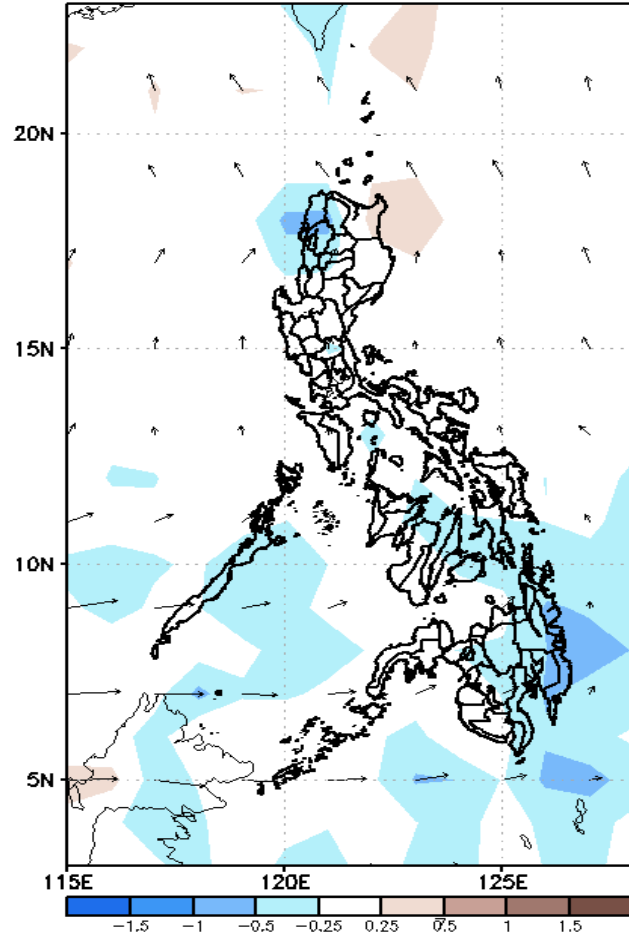
Less probability of rainfall to exceed 200mm in most parts of the country during the forecast period.



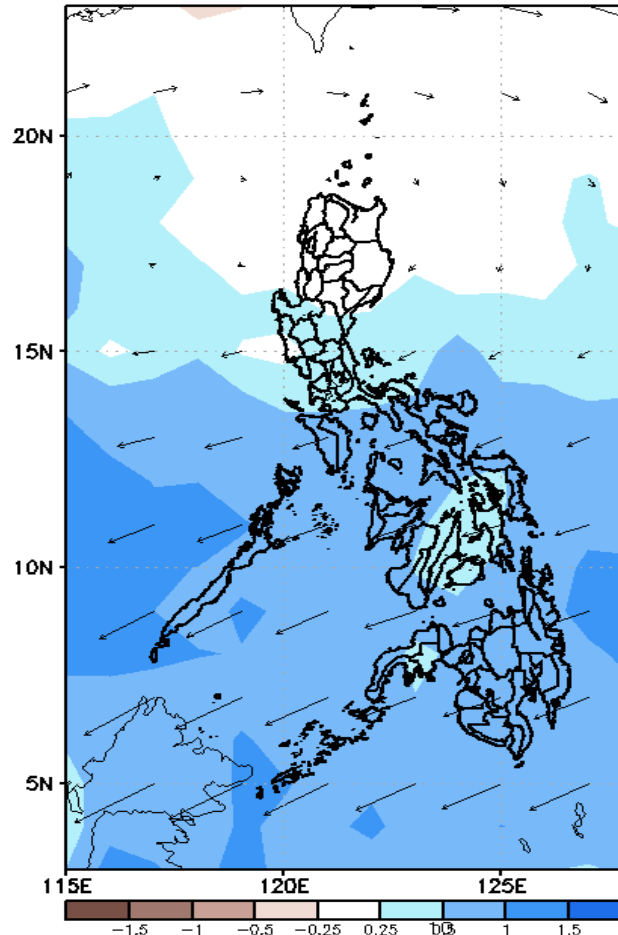
GEFS Week-2 Forecasts: Divergence & Wind Anomaly

Week 2: Oct 15-21, 2020

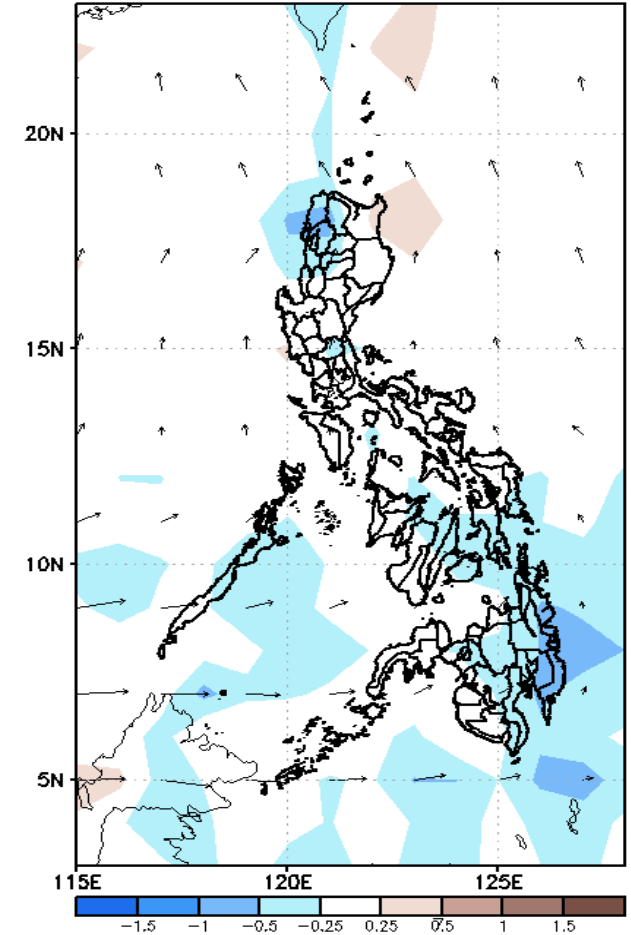
GEFS Week-2 850-hPa Divergence and Wind Anom.
Valid: 20201015 - 20201021



GEFS week-2 200-hPa Divergence and Wind Anom.
Valid: 20201015 - 20201021



GEFS Week-2 700-hPa Divergence and Wind Anom.
Valid: 20201015 - 20201021

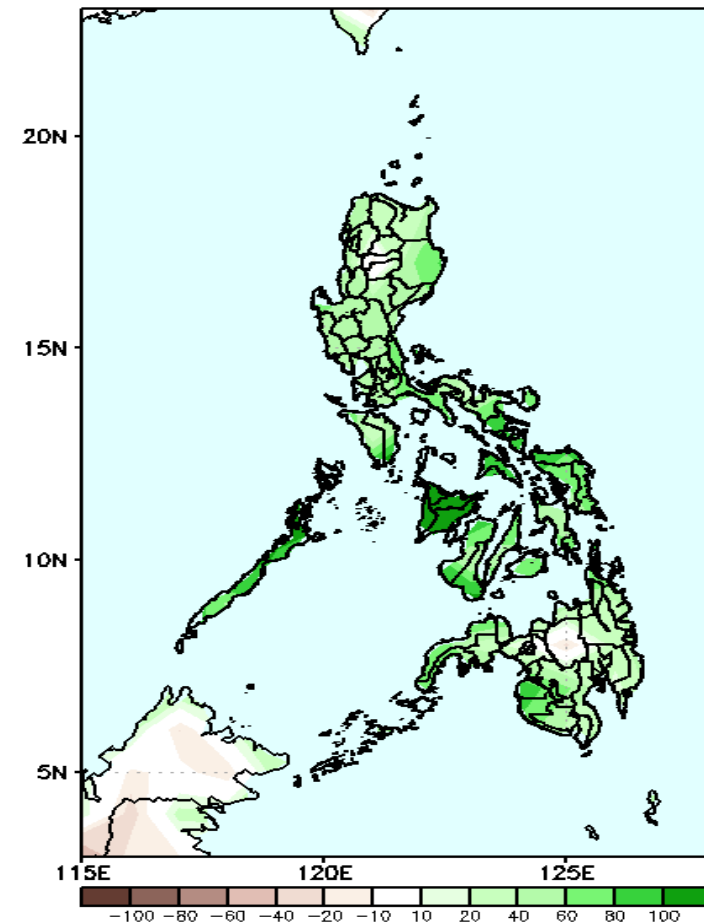


Upper level (200hPa) Divergence suggest likelihood of precipitation in most parts of the country except northern Luzon. Southwest monsoon affecting western Visayas, and parts of western Luzon while easterlies affecting most parts of the country during the forecast period.

Precipitation Anomaly and Exceedance Probability > 25/50 mm

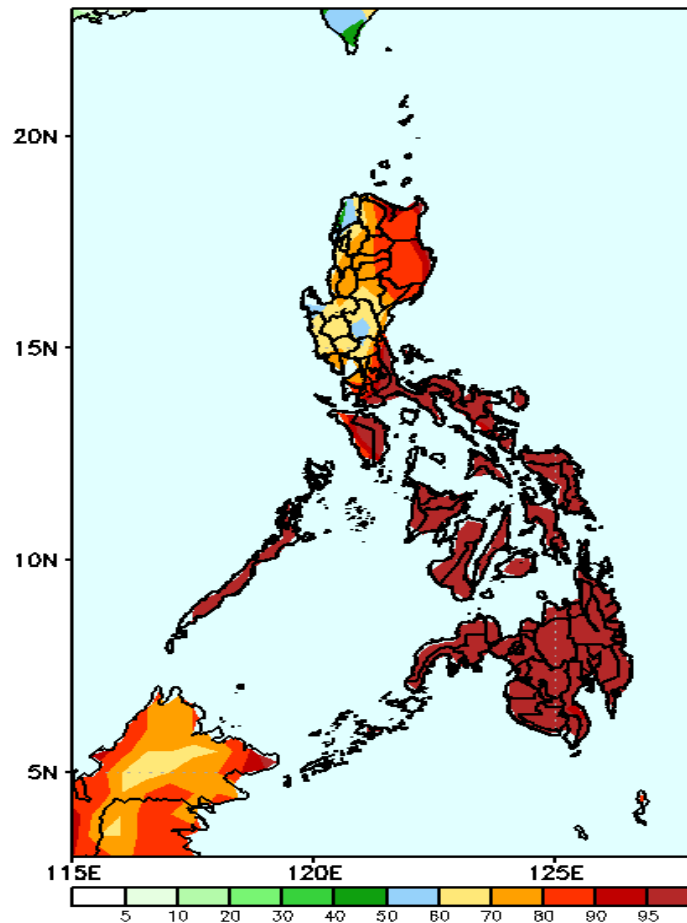
Week 2: Oct 15-21, 2020

GEFS Week-2 Precip Anomaly
Valid: 20201015 - 20201021



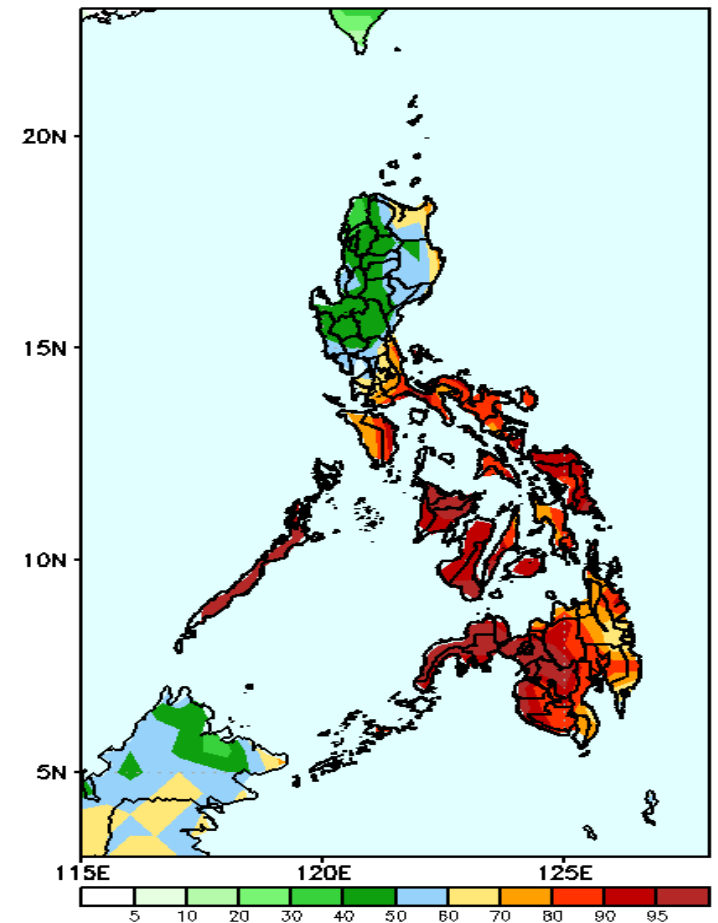
Increase of rainfall of 40-100mm in most parts of the country is expected during the forecast period.

GEFS Week-2 Exceedance Prob. > 25mm
Valid: 20201015 - 20201021



High probability of rainfall to exceed 25mm in most parts the country is expected during the forecast period.

GEFS Week-2 Exceedance Prob. > 50mm
Valid: 20201015 - 20201021

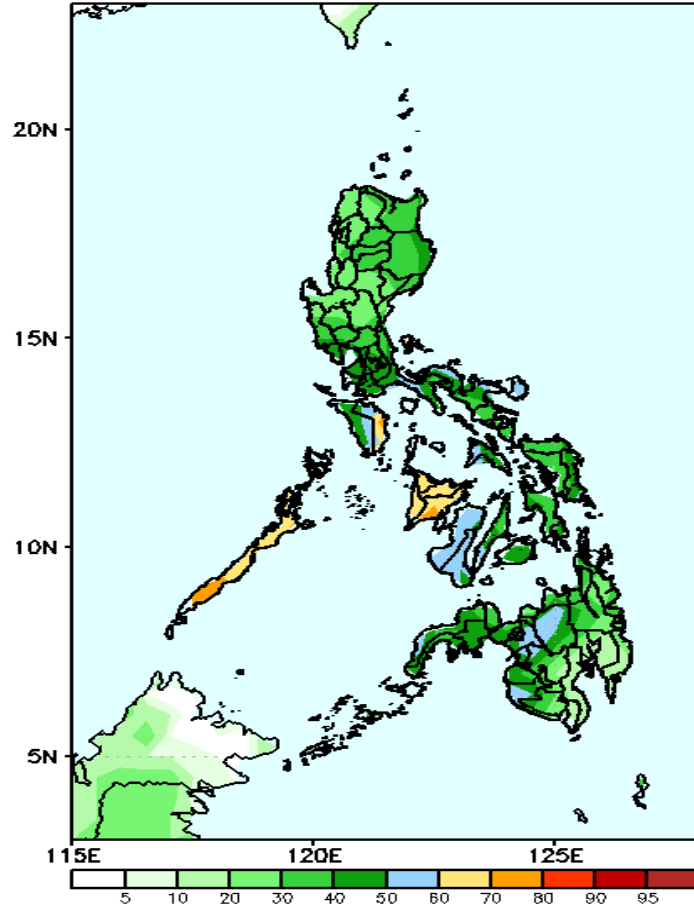


High probability of rainfall to exceed 50mm in most parts the country is expected except in the western and central parts of Luzon where there is 50-70% probability during the forecast period.

Exceedance Probability > 100/150/200 mm

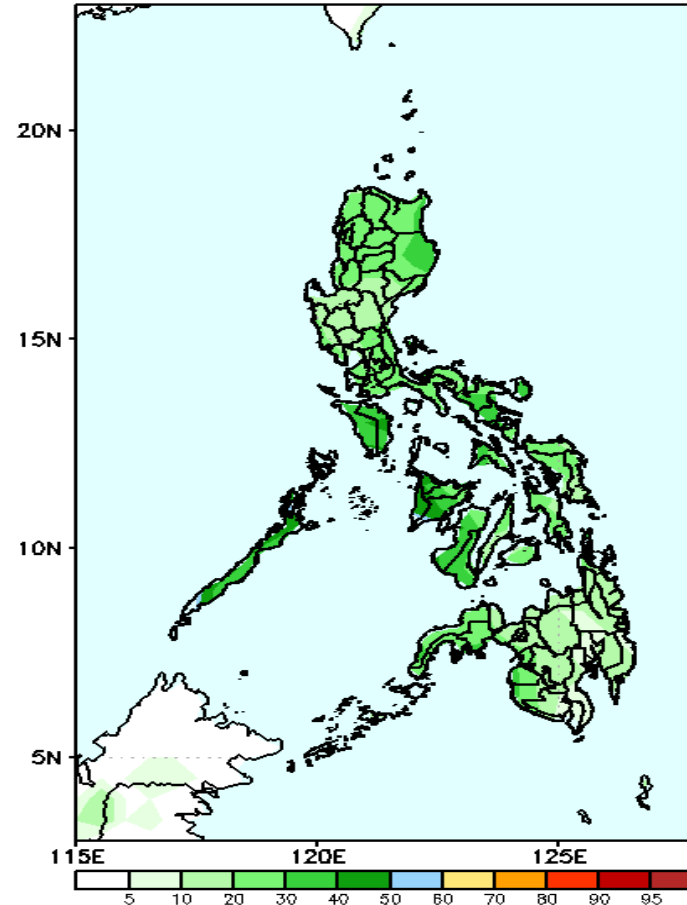
Week 2: Oct 15-21, 2020

GEFS Week-2 Exceedance Prob. > 100mm
Valid: 20201015 - 20201021



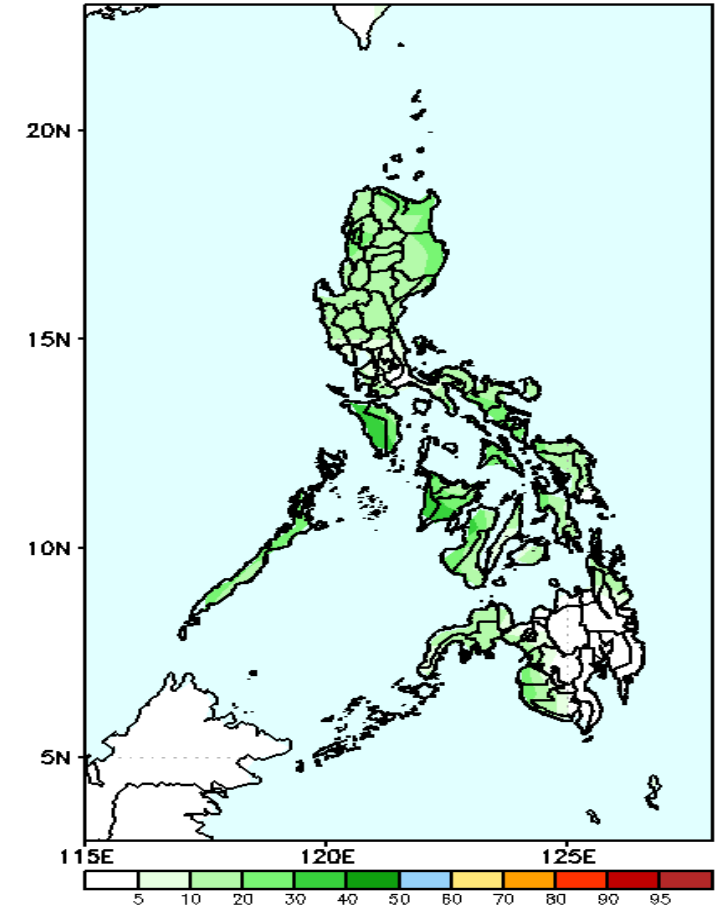
40-60% probability of rainfall to exceed 100mm in most parts of the country is expected except in Palawan and Panay Island where there is 70-80% probability during the forecast period.

GEFS Week-2 Exceedance Prob. > 150mm
Valid: 20201015 - 20201021



40-50% probability of rainfall to exceed 150mm in most parts of the country is expected during the forecast period.

GEFS Week-2 Exceedance Prob. > 200mm
Valid: 20201015 - 20201021

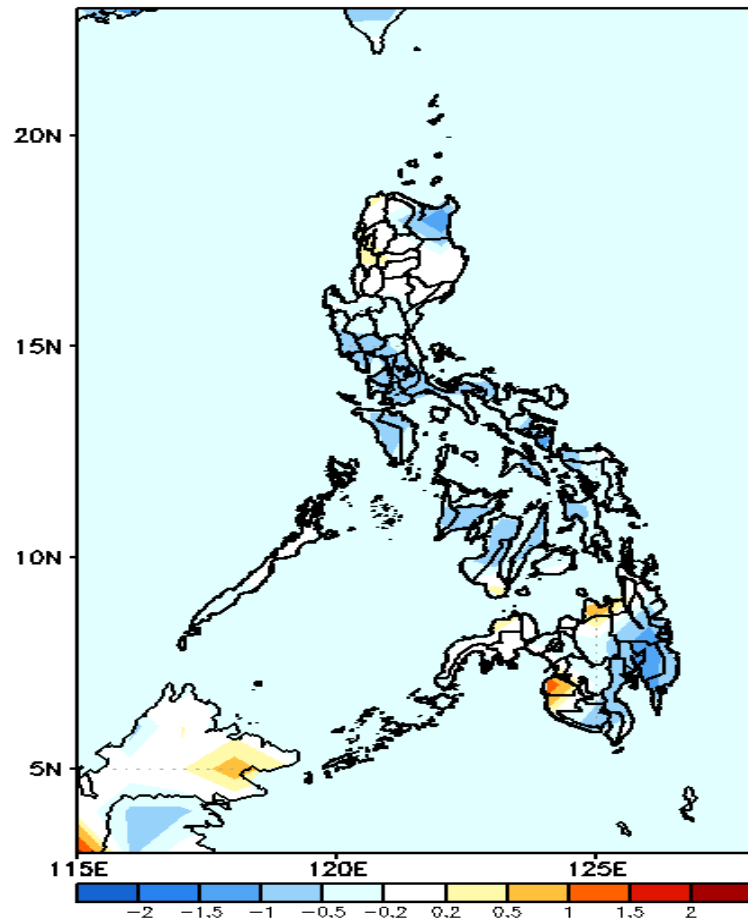


40-50% probability of rainfall to exceed 200mm in most parts of Luzon and Visayas is expected while less likely in Mindanao during the forecast period.



GEFS Week-1 & 2 Forecasts: T2m Anomaly

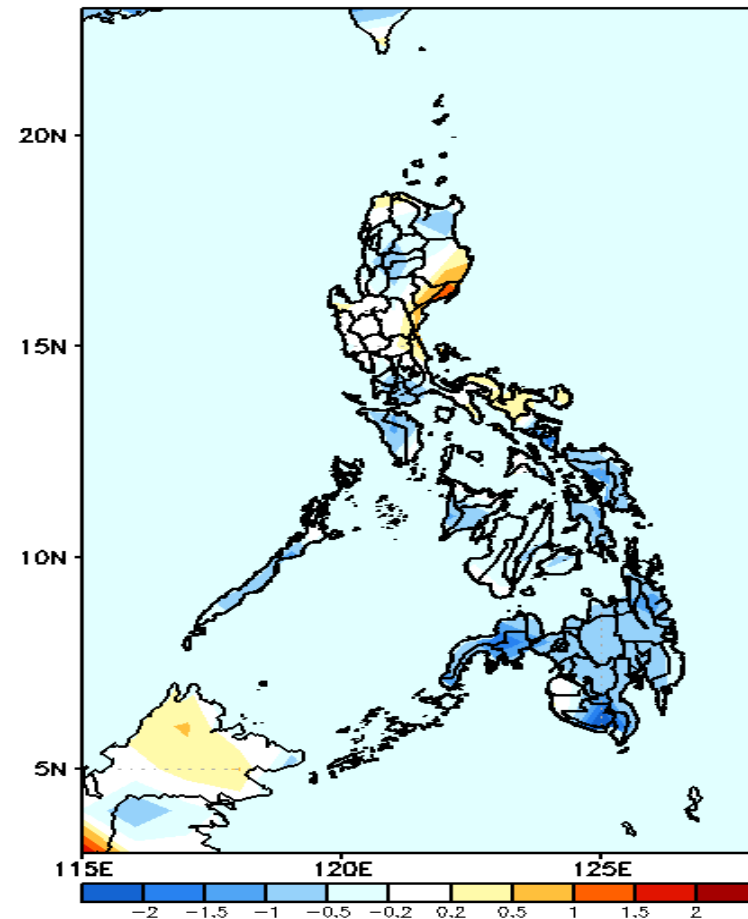
GEFS Week-1 T2m Anomaly
Valid: 20201008 – 20201014



2m Temperature Week 1: October 05-11, 2020

Average to slightly cooler than average surface air temperature is expected in most parts of the country except in some patches of slightly warmer temperature in northern and western Mindanao during the forecast period.

GEFS Week-2 T2m Anomaly
Valid: 20201015 – 20201021



2m Temperature Week 2: Oct 15-21, 2020

Slightly cooler to cooler than average surface air temperature will likely experience in most parts of Visayas and Mindanao while average to slightly warmer surface air temperature in Luzon during the forecast period.