



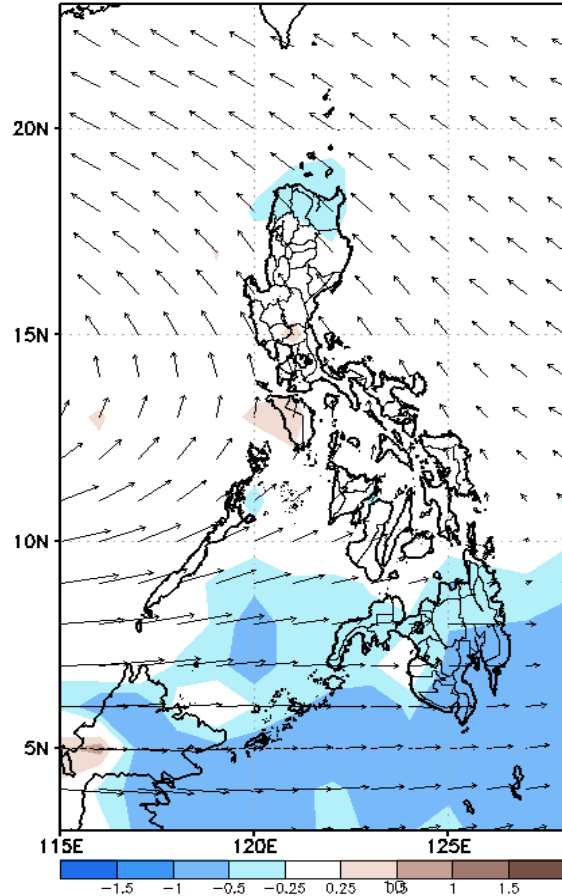
Week 1 & Week 2 Forecast for the Philippines using GEFS Model



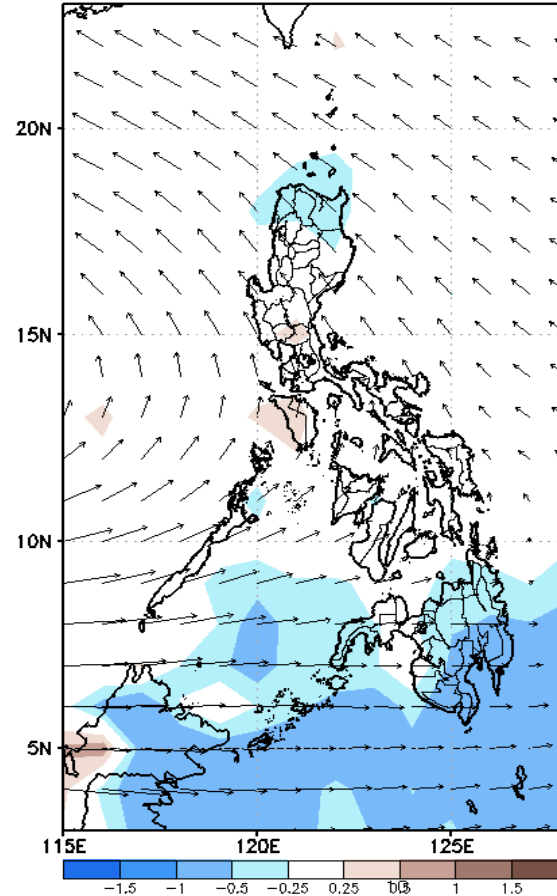
GEFS Week-1 Forecasts: Wind Anomaly Forecast

Week 1: Jul 08 - Jul 14, 2022

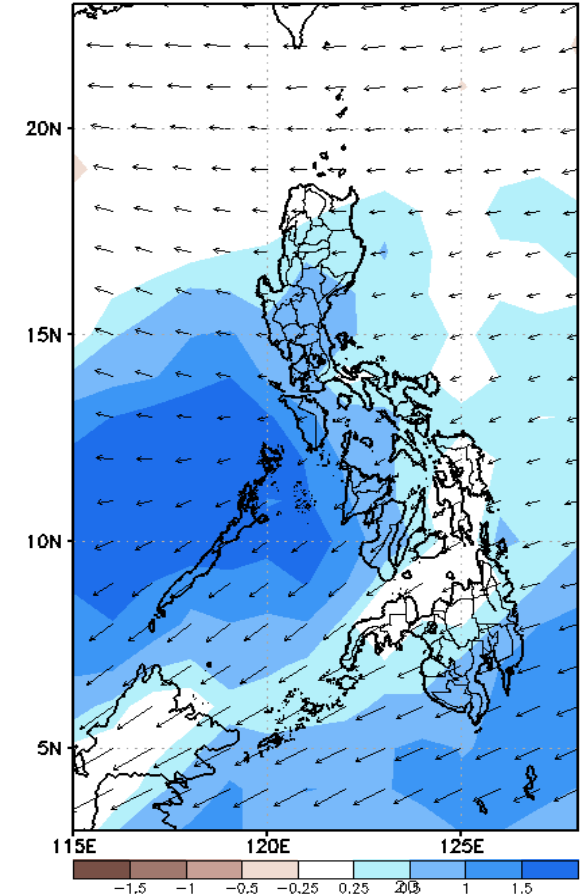
GEFS Week-1 850-hPa Divergence and Wind Anomaly
Valid: 20220708 - 20220714



GEFS Week-1 700-hPa Divergence and Wind Anomaly
Valid: 20220708 - 20220714



GEFS Week-1 200-hPa Divergence and Wind Anomaly
Valid: 20220708 - 20220714

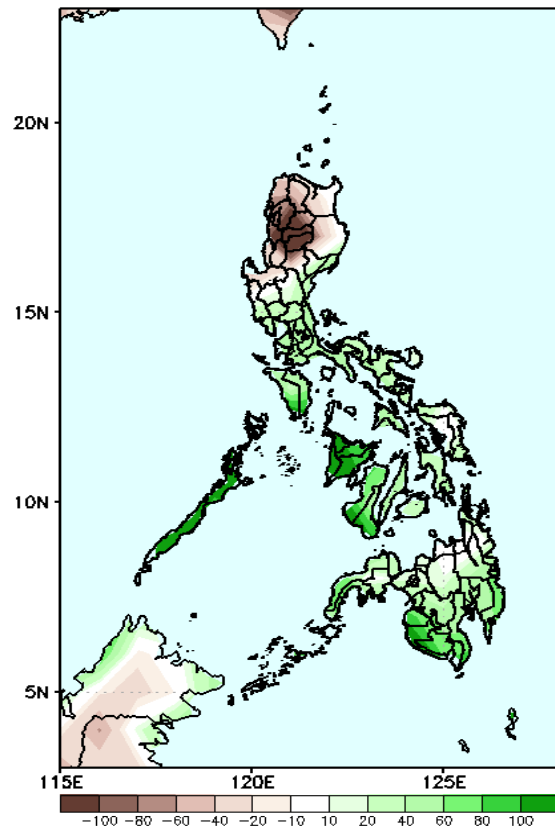


Southwest Monsoon affecting most parts of the country during the forecast period.

Precipitation Anomaly and Exceedance Probability > 25/50 mm

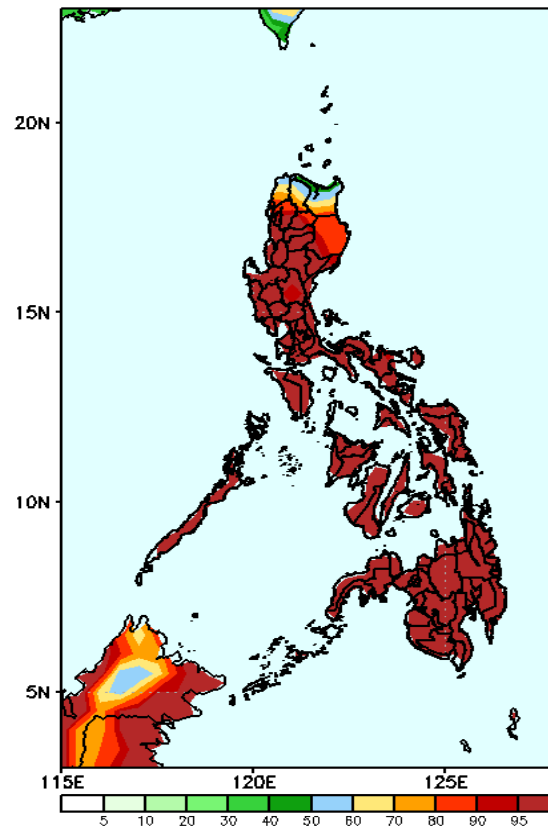
Week 1: Jul 08 - Jul 14, 2022

GEFS Week-1 Precip. Anomaly
Valid: 20220708 - 20220714



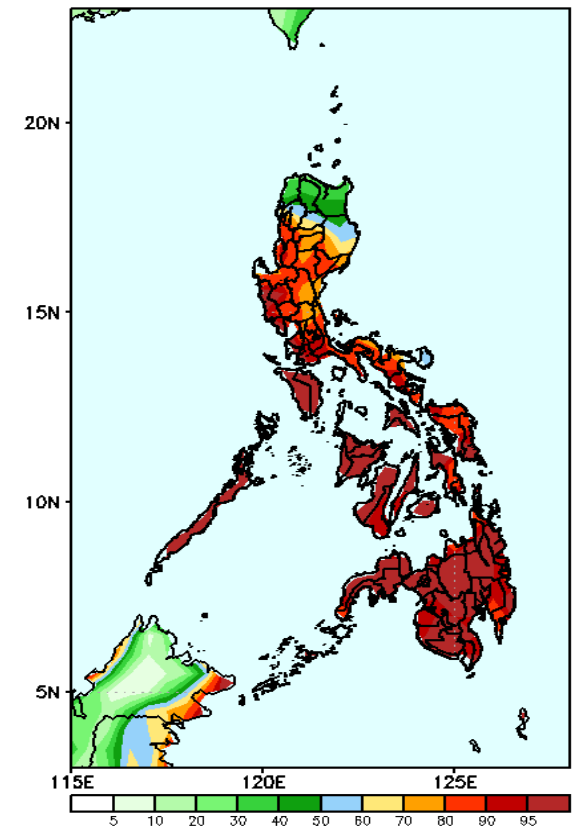
40 – 100mm rainfall deficit will be likely in most parts of Ilocos region and CAR while an increase of rainfall of 40 – 100mm is expected for the rest of the country during the forecast period .

GEFS Week-1 Exceedance Prob. > 25mm
Valid: 20220708 - 20220714



High probability of rainfall to exceed 25mm in most parts of the country during the forecast period.

GEFS Week-1 Exceedance Prob. > 50mm
Valid: 20220708 - 20220714

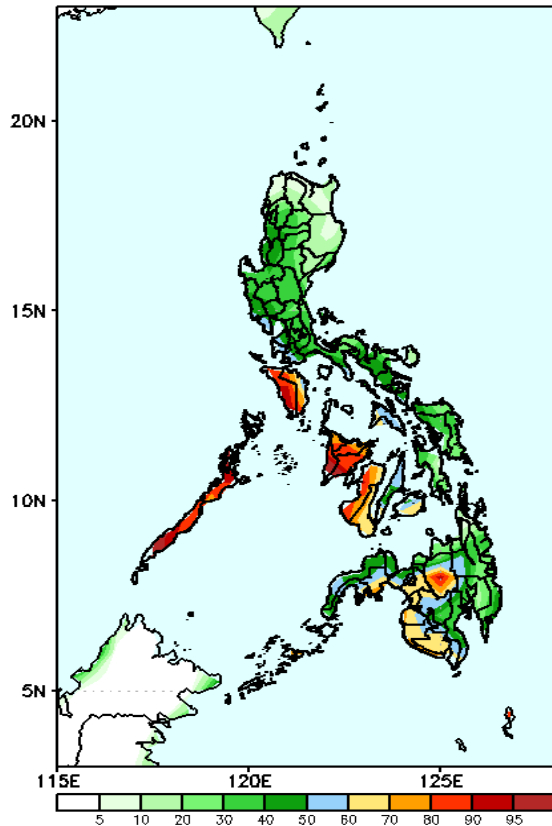


High probability of rainfall to exceed 50mm in most parts of the country except Ilocos Norte, Apayao and Cagayan during the forecast period.

Exceedance Probability > 100/150/200 mm

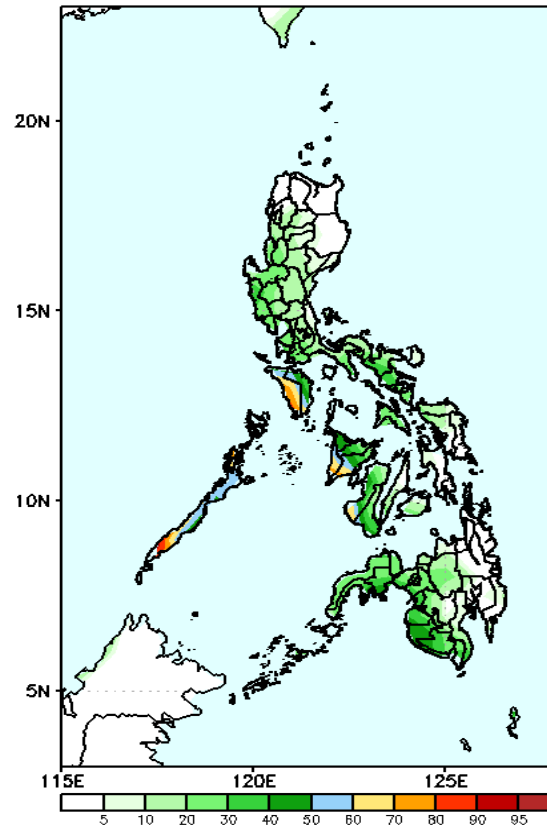
Week 1: Jul 08 - Jul 14, 2022

GEFS Week-1 Exceedance Prob. > 100mm
Valid: 20220708 - 20220714



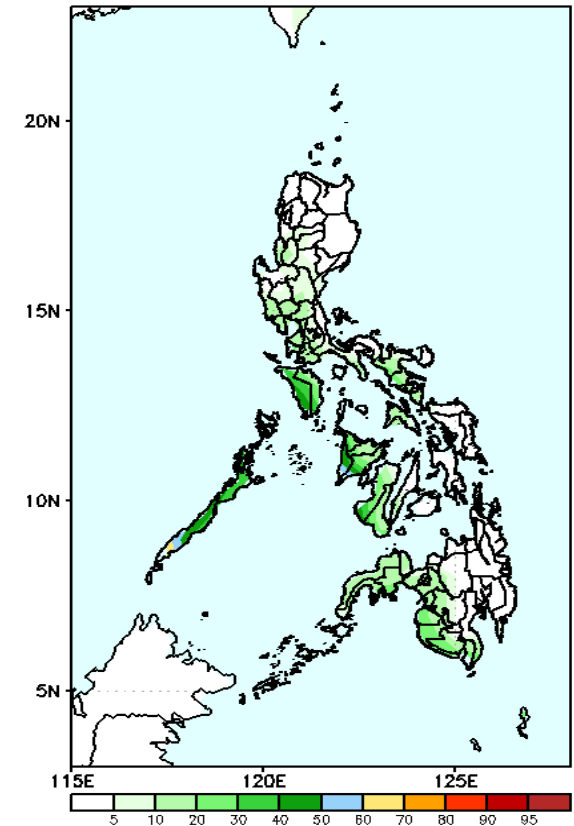
High probability of rainfall to exceed 100mm in most parts of MIMAROPA, Western Visayas, Negros Oriental and Bukidnon while less likely for the rest of the country during the forecast period.

GEFS Week-1 Exceedance Prob. > 150mm
Valid: 20220708 - 20220714



Low probability of rainfall to exceed 150mm in most parts of the country during the forecast period.

GEFS Week-1 Exceedance Prob. > 200mm
Valid: 20220708 - 20220714

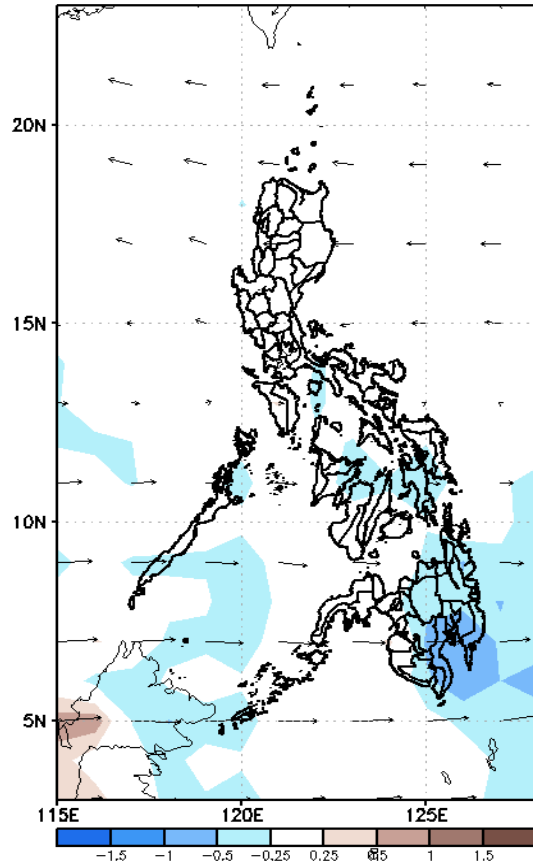


Low probability of rainfall to exceed 200mm in most parts of the country during the forecast period.

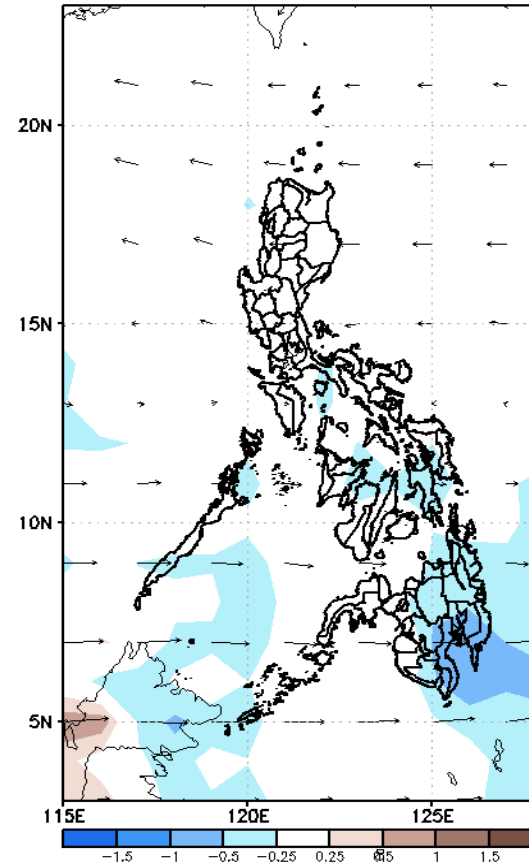
GEFS Week-2 Forecasts: Wind Anomaly Forecast

Week 2: Jul 15 - Jul 21, 2022

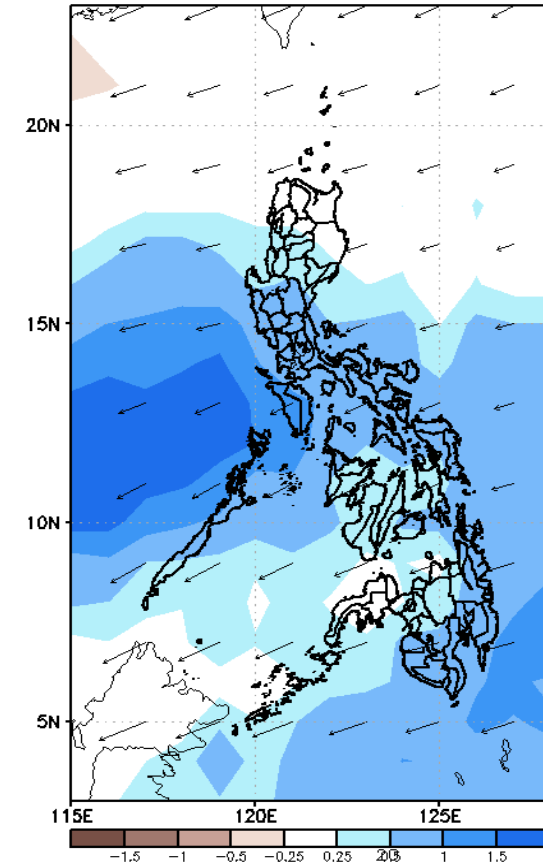
GEFS Week-2 850-hPa Divergence and Wind Anomaly
Valid: 20220715 - 20220721



GEFS Week-2 700-hPa Divergence and Wind Anomaly
Valid: 20220715 - 20220721



GEFS Week-2 200-hPa Divergence and Wind Anomaly
Valid: 20220715 - 20220721

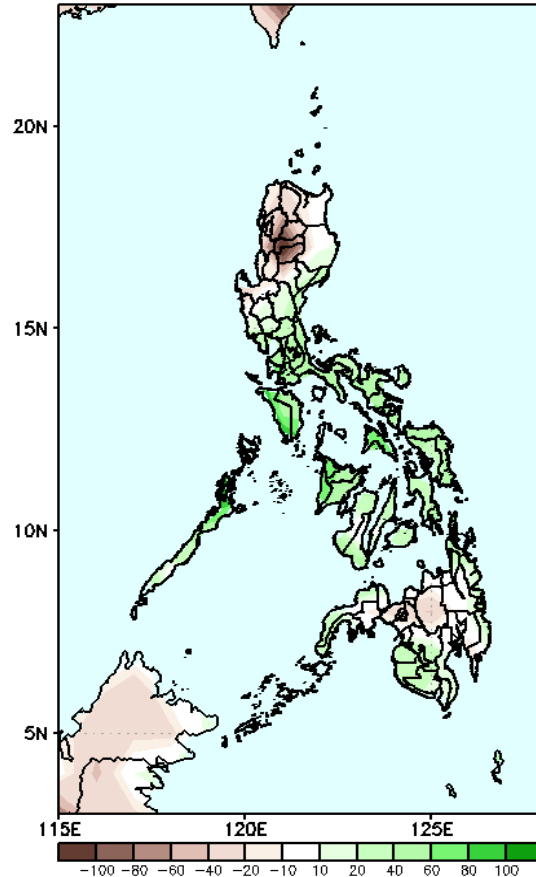


Westerly winds affecting Southern Visayas and Mindanao while Easterlies affecting the rest of the country during the forecast period.

Precipitation Anomaly and Exceedance Probability > 25/50 mm

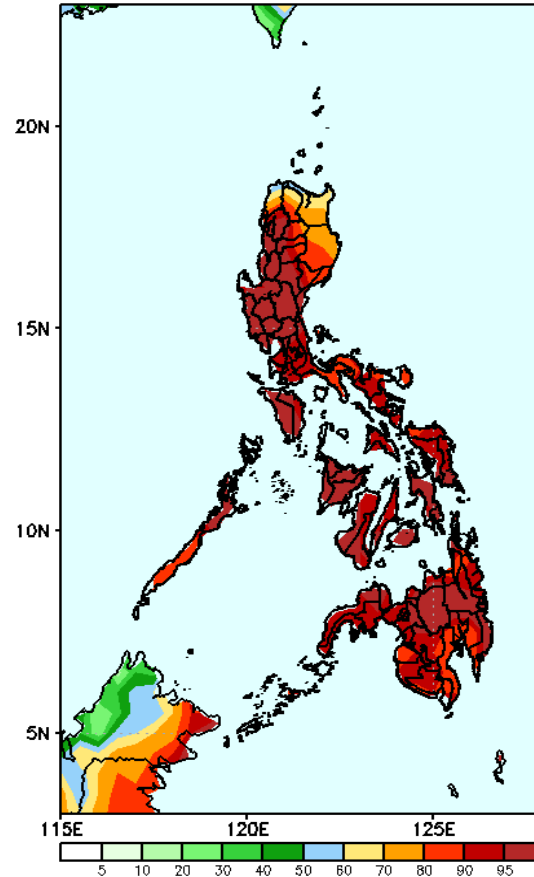
Week 2: Jul 15 - Jul 21, 2022

GEFS Week-2 Precip Anomaly
Valid: 20220715 - 20220721



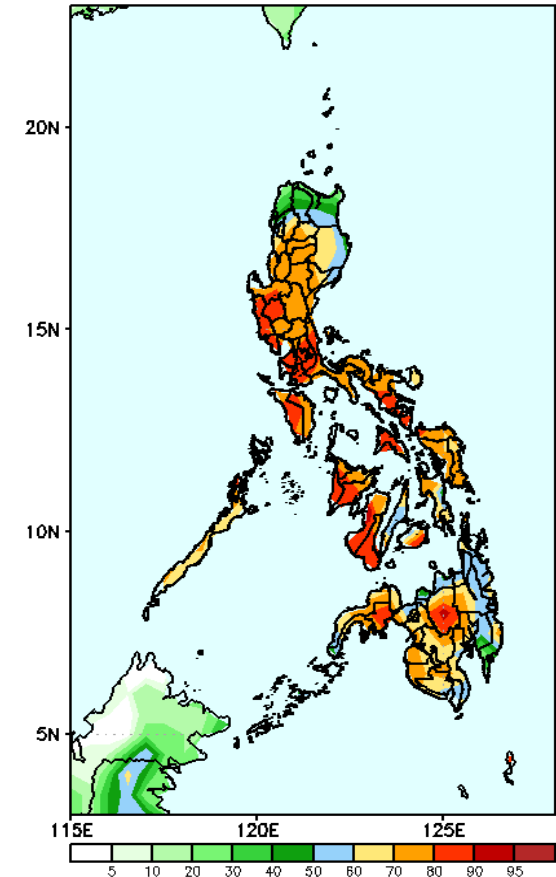
40-80mm increase of rainfall will be likely in most parts of the country except some parts of Ilocos Region, CAR, Bukinon, and Lanao Provinces where rainfall deficit of 20 - 60mm is expected during the forecast period.

GEFS Week-2 Exceedance Prob. > 25mm
Valid: 20220715 - 20220721



High probability of rainfall to exceed 25mm in most parts of the country during the forecast period.

GEFS Week-2 Exceedance Prob. > 50mm
Valid: 20220715 - 20220721

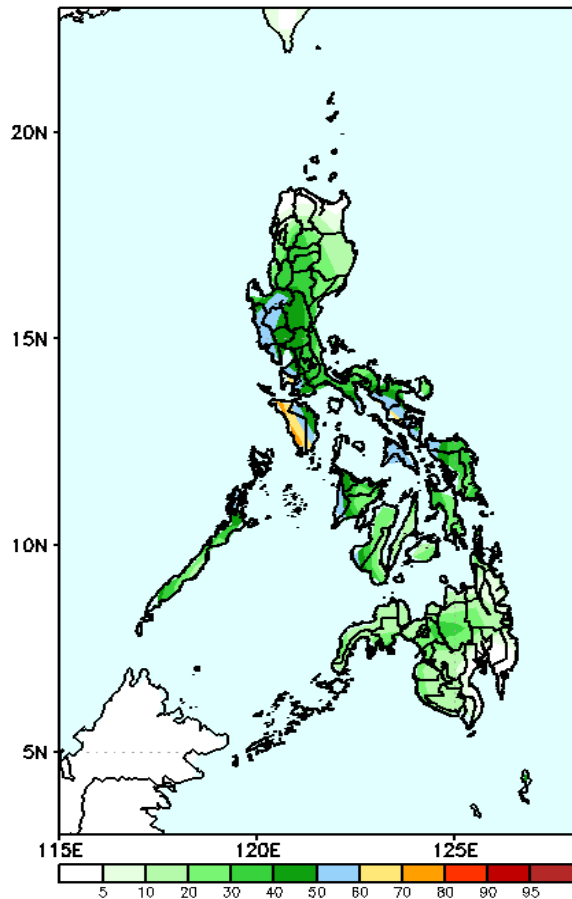


High probability of rainfall to exceed 50mm in most parts of the country except Ilocos Norte, Apayao and Cagayan during the forecast period

Exceedance Probability > 100/150/200 mm

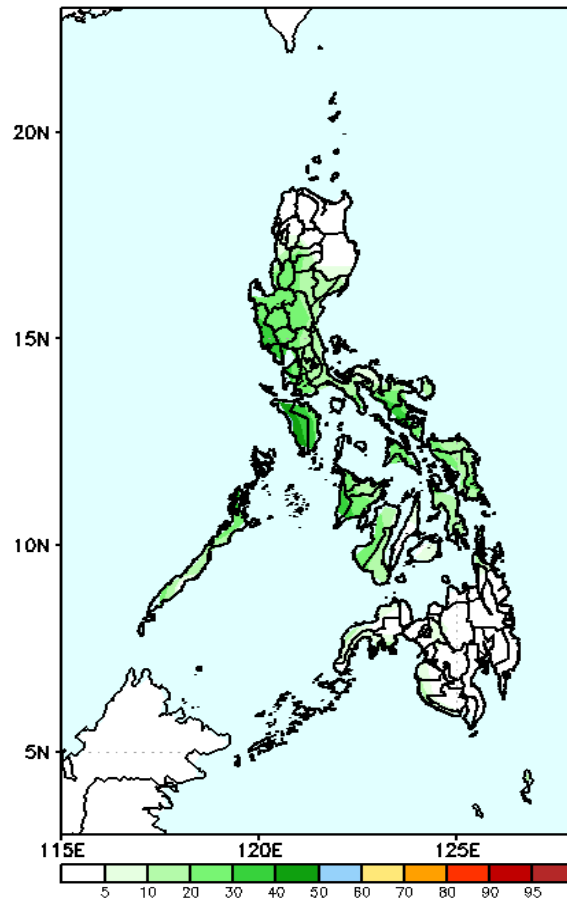
Week 2: Jul 15 - Jul 21, 2022

GEFS Week-2 Exceedance Prob. > 100mm
Valid: 20220715 - 20220721



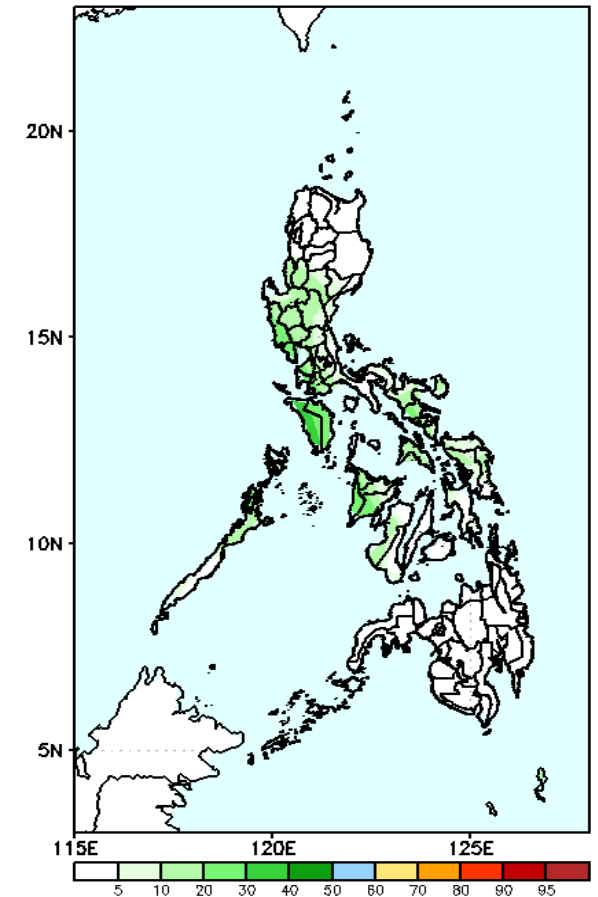
Low probability of rainfall to exceed 100mm in most parts of the country except Mindoro Occidental during the forecast period.

GEFS Week-2 Exceedance Prob. > 150mm
Valid: 20220715 - 20220721



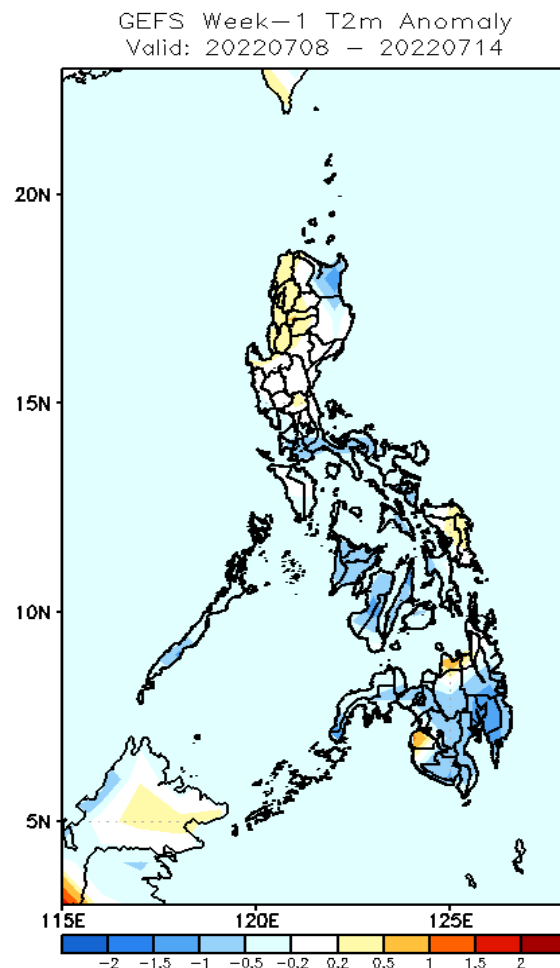
Low probability of rainfall to exceed 150mm in most parts of the country during the forecast period.

GEFS Week-2 Exceedance Prob. > 200mm
Valid: 20220715 - 20220721



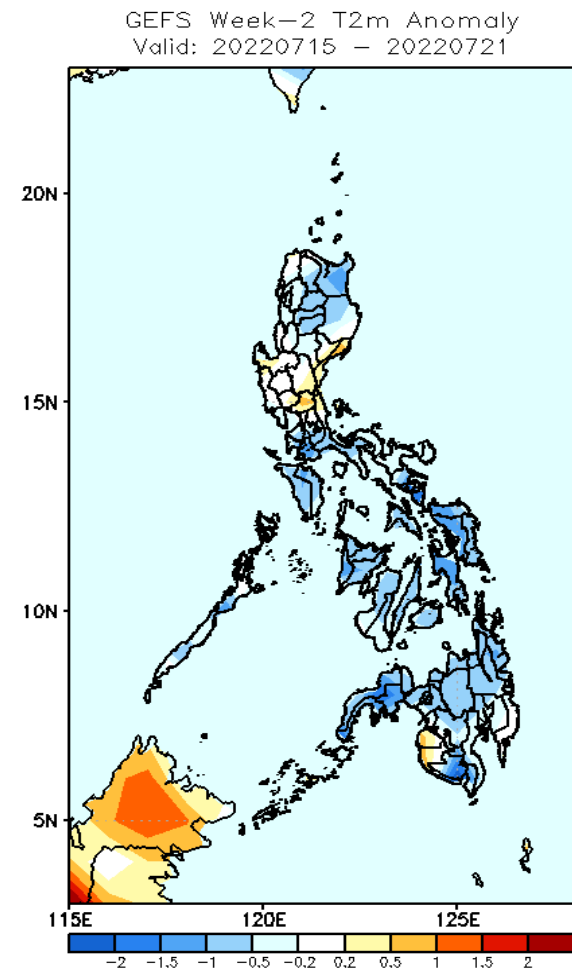
Low probability of rainfall to exceed 200mm in most parts of the country during the forecast period.

GEFS Week-1 & 2 Forecasts: T2m Anomaly



2m Temperature Week 1: Jul 08- Jul 14, 2022

Slightly cooler to cooler than average surface air temperature will likely experience in most parts of the country except most parts of CAR, Ilocos Region, Samar provinces, Misamis Oriental, and Maguindanao were slightly warmer than average surface air temperature for the rest of the country during the forecast period.



2m Temperature Week 2: Jul 15 – Jul 21, 2022

Slightly cooler to cooler than average surface air temperature will likely experience in most parts of the country except Aurora, Bulacan, Maguindanao and Sultan Kudarat were average to warmer than average surface air temperature will be likely be experience during the forecast period.