



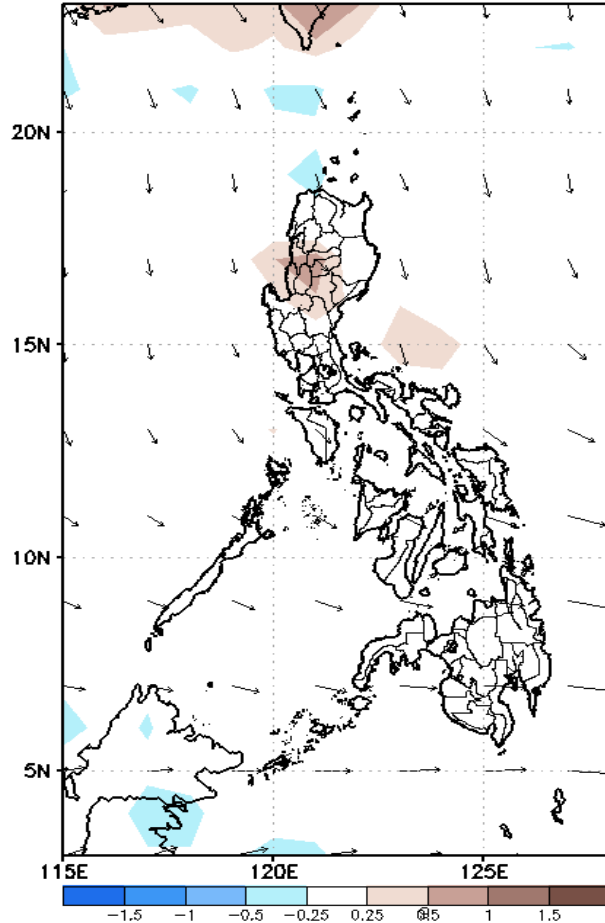
Week 1 & Week 2 Forecast for the Philippines using GEFS Model



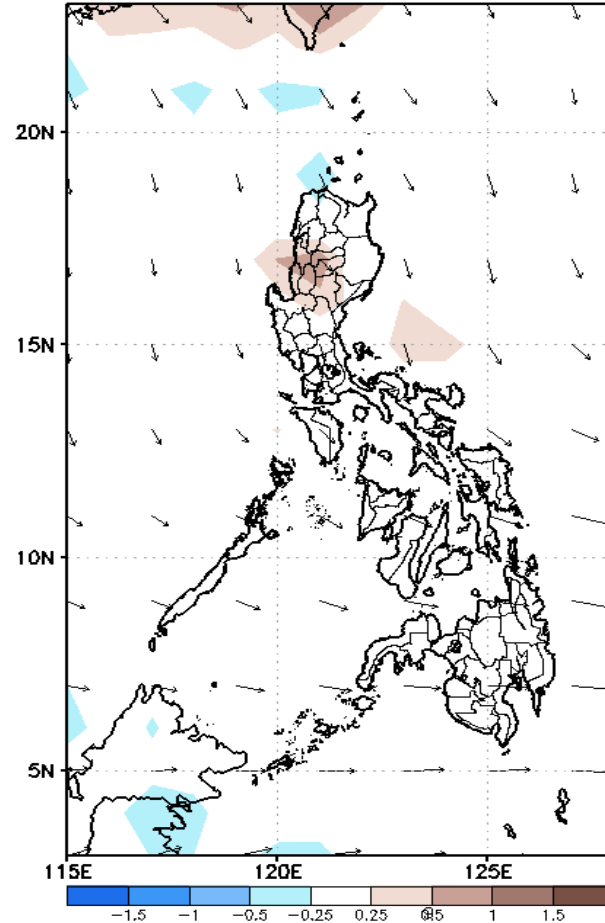
GEFS Week-1 Forecasts: Divergence & Wind Anomaly

Week 1: April 08-14, 2021

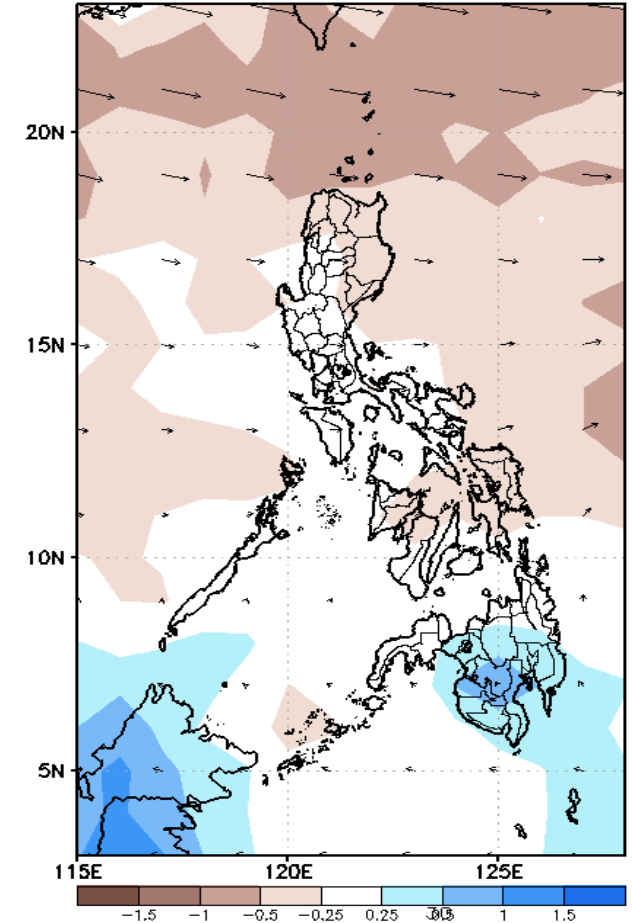
GEFS Week-1 850-hPa Divergence and Wind Anom
Valid: 20210408 - 20210414



GEFS Week-1 700-hPa Divergence and Wind Anom
Valid: 20210408 - 20210414



GEFS Week-1 200-hPa Divergence and Wind Anom
Valid: 20210408 - 20210414

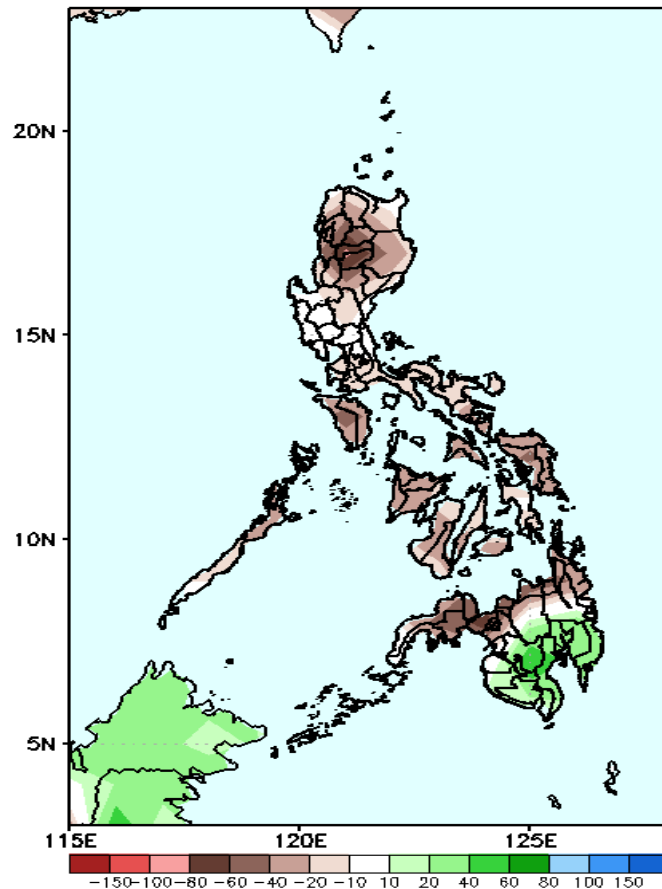


Upper and low level Divergence suggest high likelihood of precipitation in most parts Mindanao. Northeasterlies affecting some parts of Luzon while easterlies affecting most parts of the country attributing to warmer temperature during the forecast period.

Precipitation Anomaly and Exceedance Probability > 25/50 mm

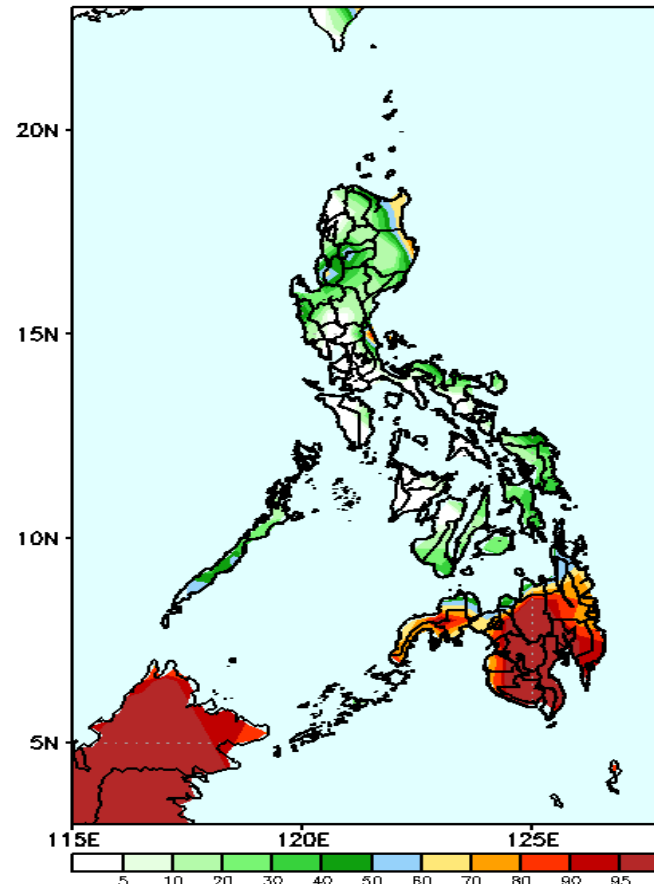
Week 1: April 08-14, 2021

GEFS Week-1 Precip Anomaly
Valid: 20210408 - 20210414



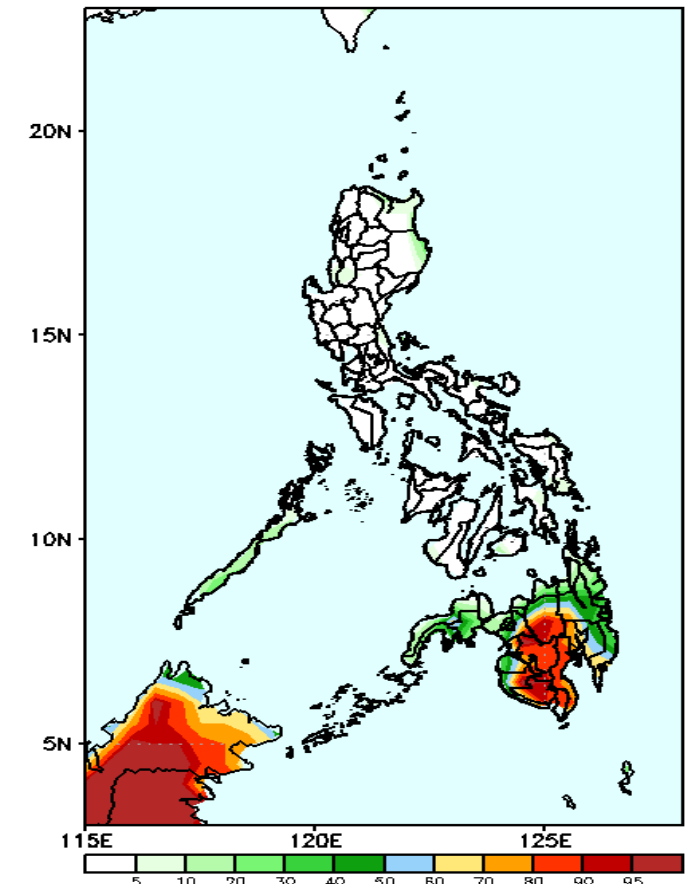
Rainfall deficit of up to 40-80mm is expected in most parts of the country during the forecast period.

GEFS Week-1 Exceedance Prob. > 25mm
Valid: 20210408 - 20210414



High probability of rainfall to exceed 25mm in most parts of Mindanao while less likely for the rest of the country during the forecast period.

GEFS Week-1 Exceedance Prob. > 50mm
Valid: 20210408 - 20210414

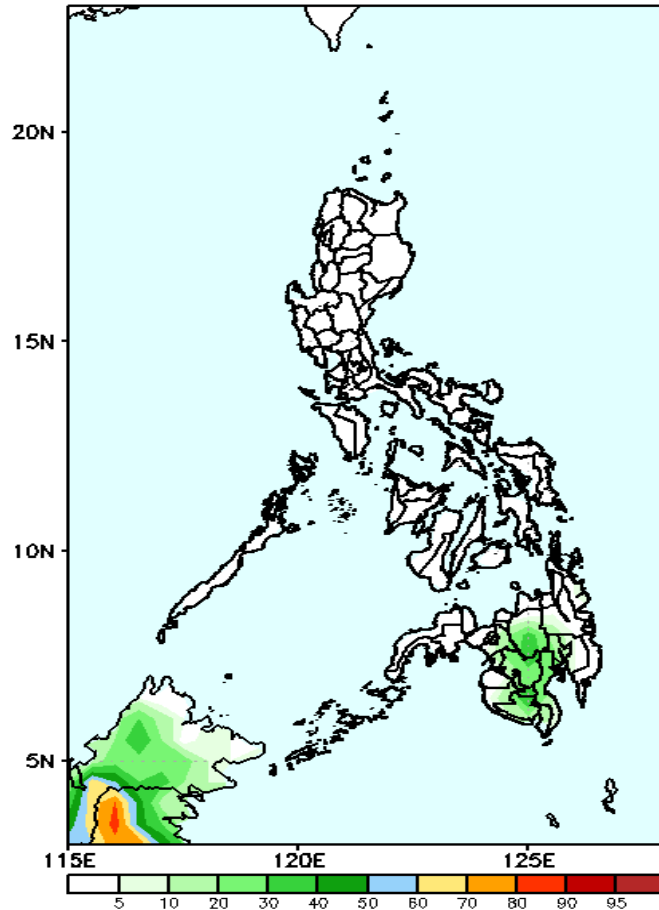


High probability of rainfall to exceed 50mm in central and southwestern parts of Mindanao while less likely for the rest of the country during the forecast period.

Exceedance Probability > 100/150/200 mm

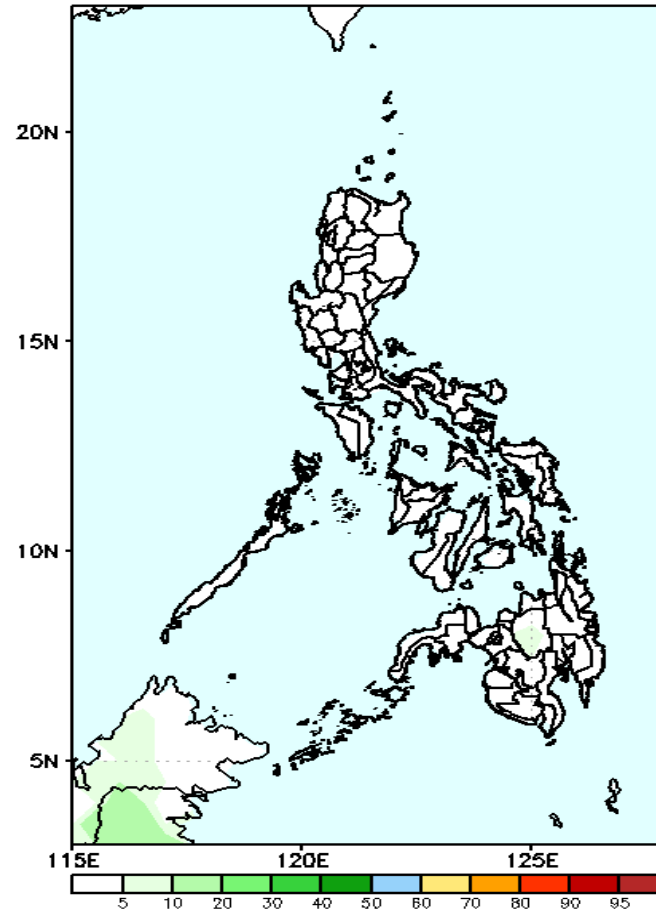
Week 1: April 08-14, 2021

GEFS Week-1 Exceedance Prob. > 100mm
Valid: 20210408 – 20210414



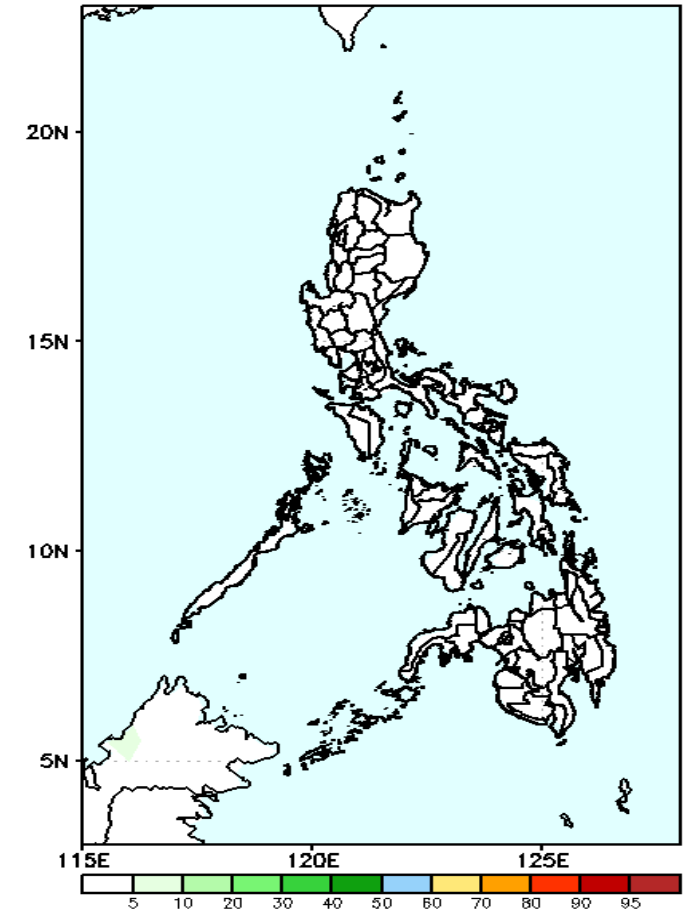
Less probability of rainfall to exceed 100mm in most parts of the country during the forecast period.

GEFS Week-1 Exceedance Prob. > 150mm
Valid: 20210408 – 20210414



Less probability of rainfall to exceed 150mm in most parts of the country during the forecast period.

GEFS Week-1 Exceedance Prob. > 200mm
Valid: 20210408 – 20210414



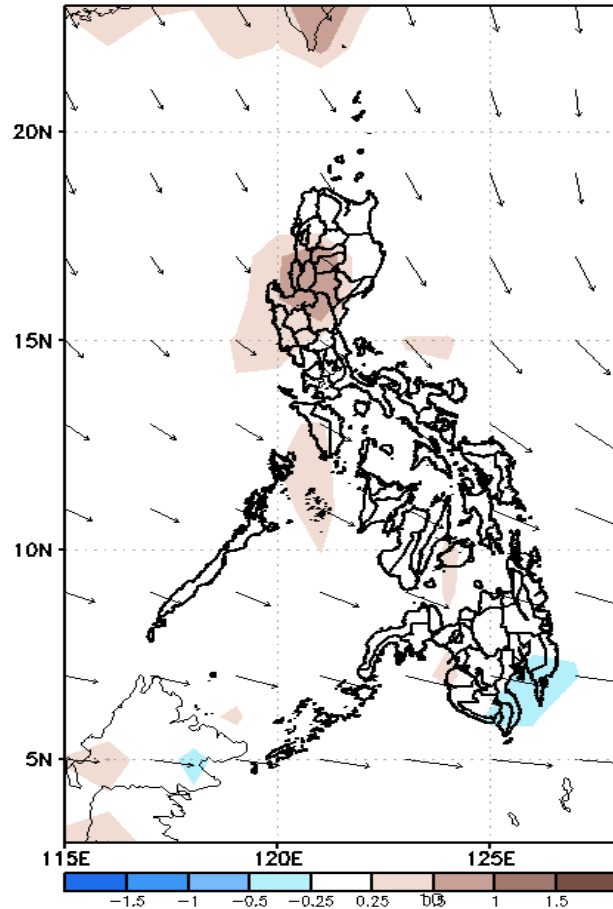
Less probability of rainfall to exceed 200mm in most parts of the country during the forecast period.



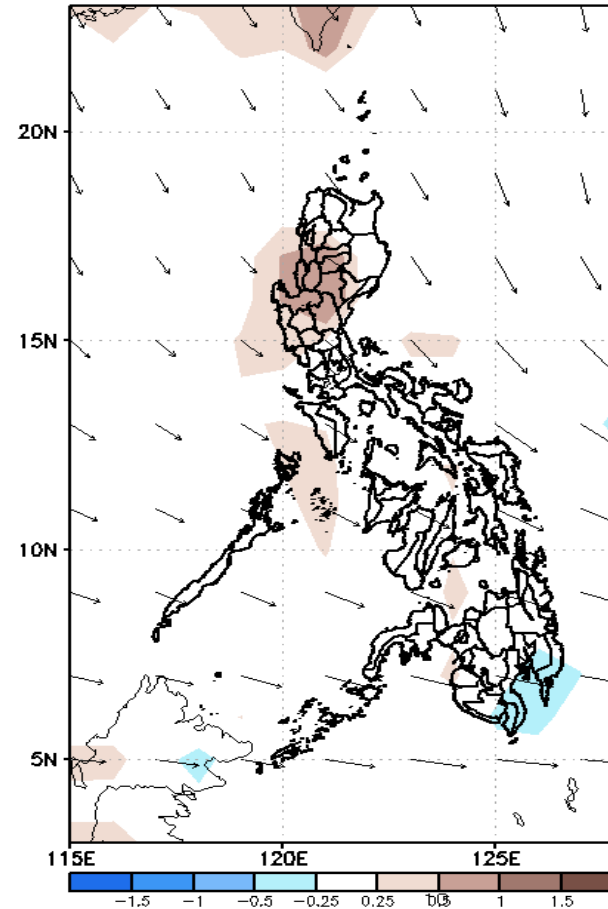
GEFS Week-2 Forecasts: Divergence & Wind Anomaly

Week 2: April 15-21, 2021

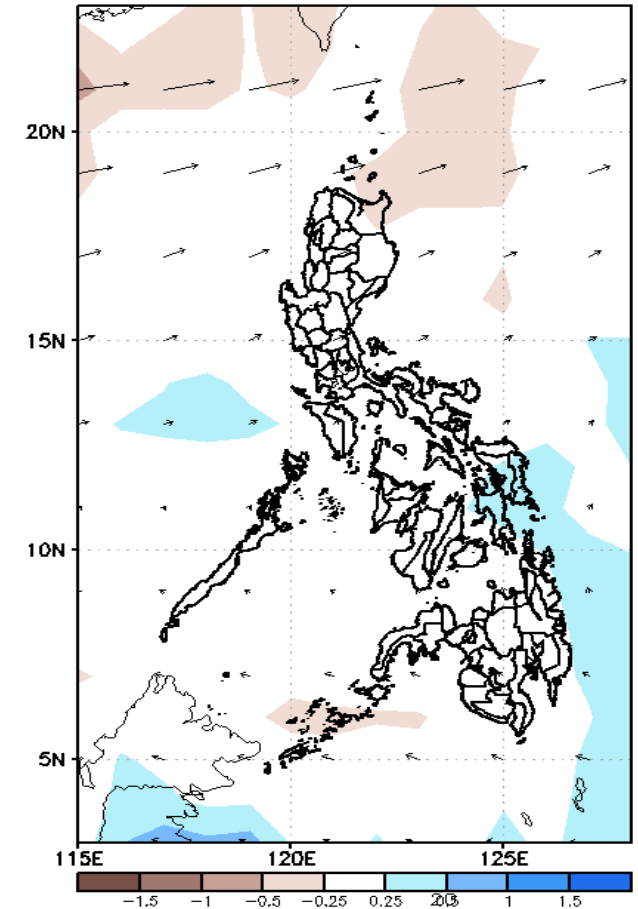
GEFS Week-2 850-hPa Divergence and Wind Anom.
Valid: 20210415 - 20210421



GEFS Week-2 700-hPa Divergence and Wind Anom.
Valid: 20210415 - 20210421



GEFS week-2 200-hPa Divergence and Wind Anom.
Valid: 20210415 - 20210421

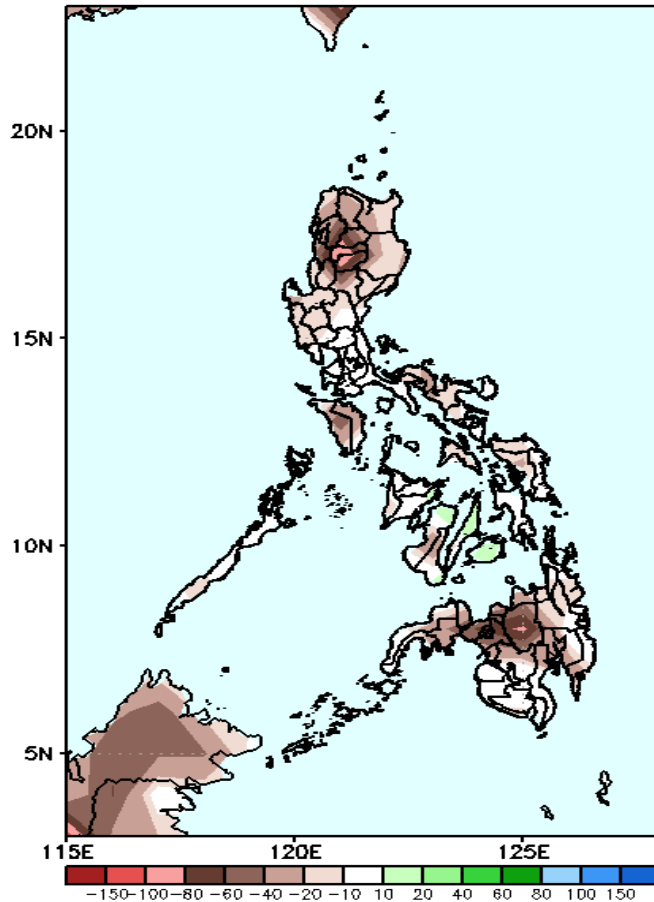


Upper and low level Divergence suggest high likelihood of precipitation in the eastern parts of Visayas and Mindanao. Easterlies affecting most parts of the country attributing to warmer temperatures during the forecast period.

Precipitation Anomaly and Exceedance Probability > 25/50 mm

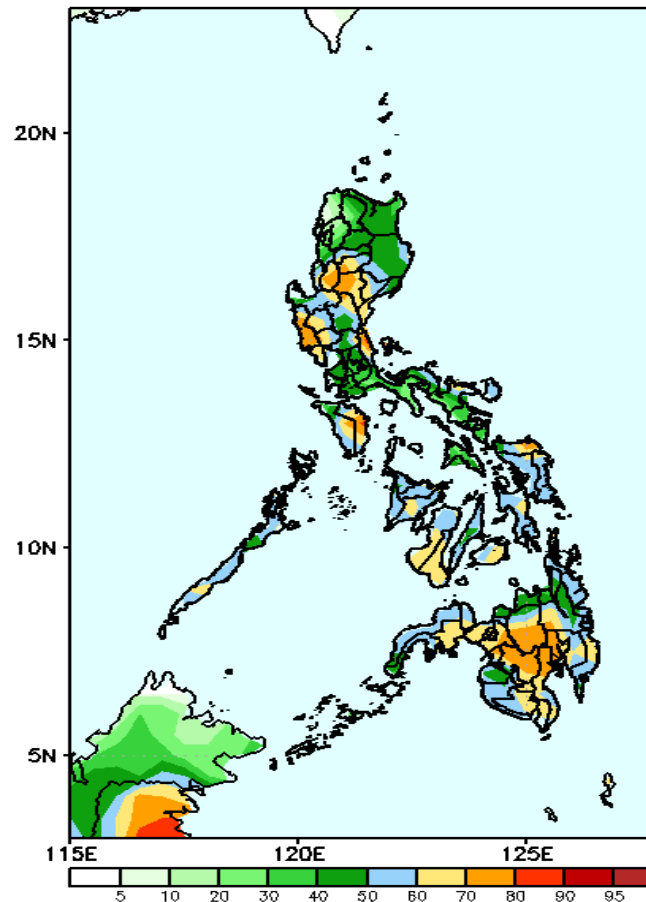
Week 2: April 15-21, 2021

GEFS Week-2 Precip Anomaly
Valid: 20210415 – 20210421



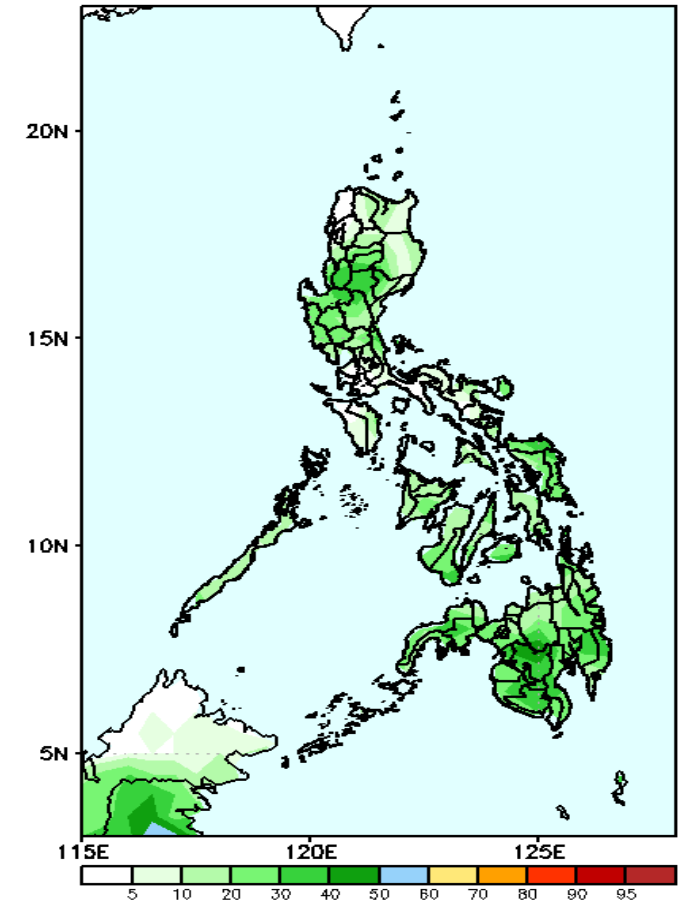
Rainfall deficit of up to 100mm is expected in CAR & Northern Mindanao and 20-40mm for the rest of the country during the forecast period.

GEFS Week-2 Exceedance Prob. > 25mm
Valid: 20210415 – 20210421



40-80% probability of rainfall to exceed 25mm in most parts of the country is expected during the forecast period.

GEFS Week-2 Exceedance Prob. > 50mm
Valid: 20210415 – 20210421

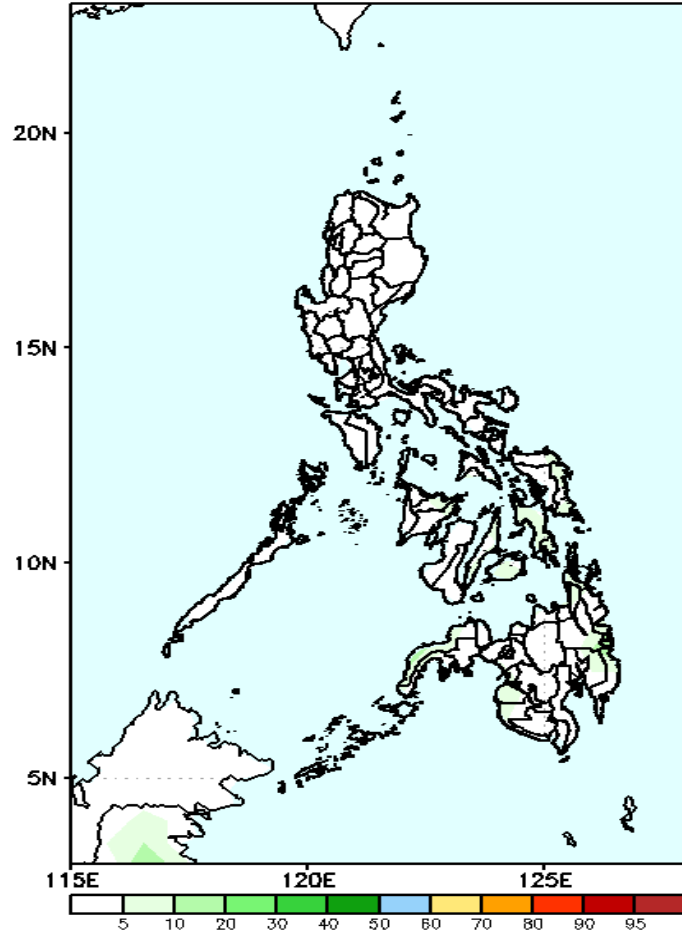


Less probability of rainfall to exceed 50mm in most parts of the country during the forecast

Exceedance Probability > 100/150/200 mm

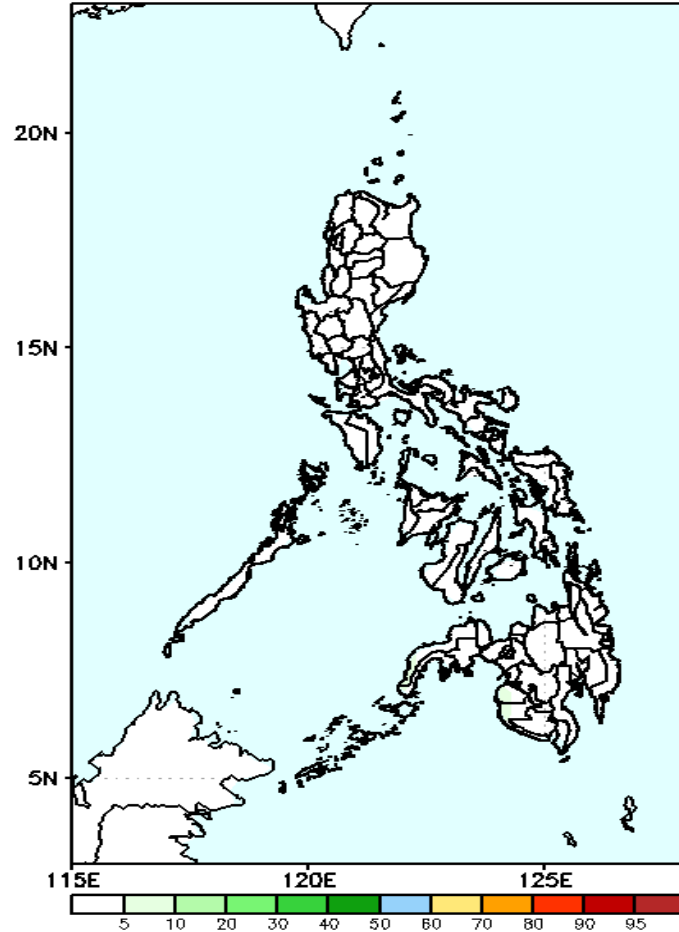
Week 2: April 15-21, 2021

GEFS Week-2 Exceedance Prob. > 100mm
Valid: 20210415 - 20210421



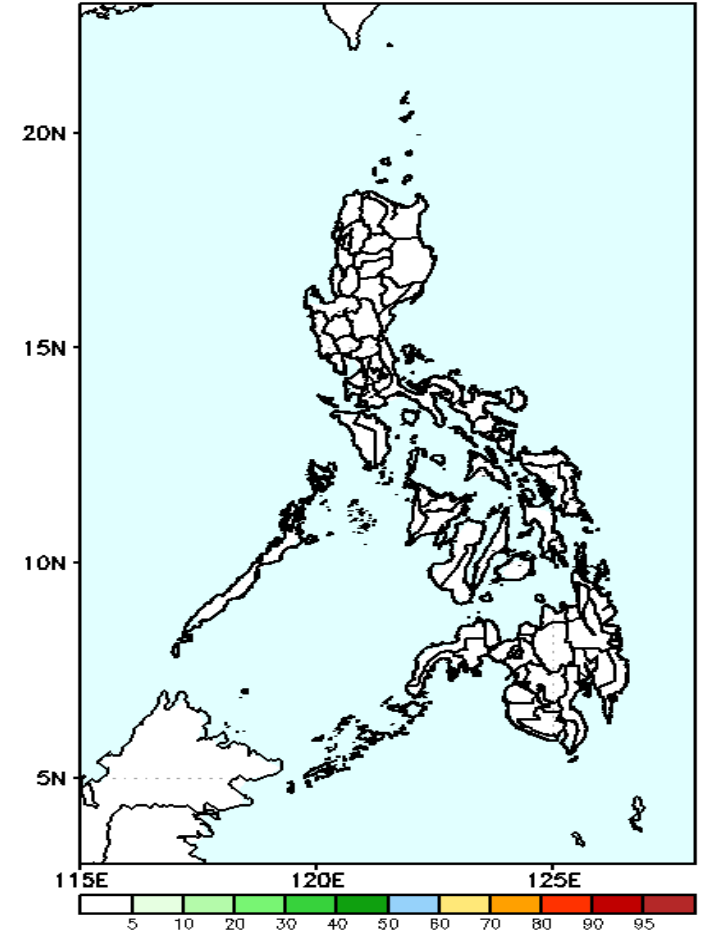
Less probability of rainfall to exceed 100mm in most parts of the country during the forecast period.

GEFS Week-2 Exceedance Prob. > 150mm
Valid: 20210415 - 20210421



Less probability of rainfall to exceed 150mm in most parts of the country during the forecast period.

GEFS Week-2 Exceedance Prob. > 200mm
Valid: 20210415 - 20210421

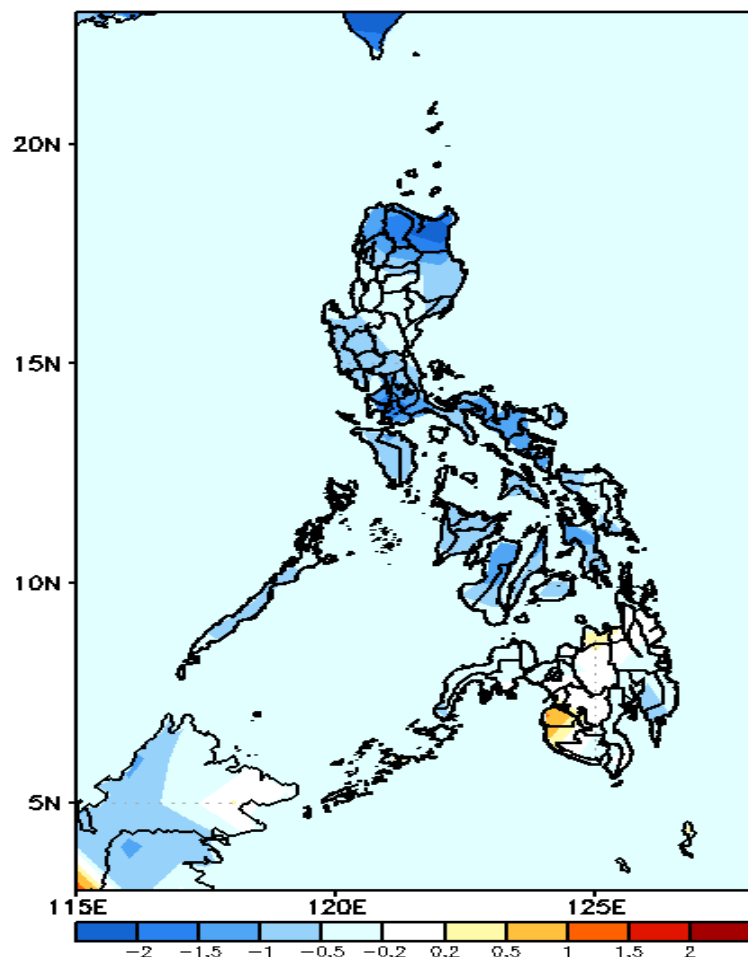


Less probability of rainfall to exceed 200mm in most parts of the country during the forecast period.



GEFS Week-1 & 2 Forecasts: T2m Anomaly

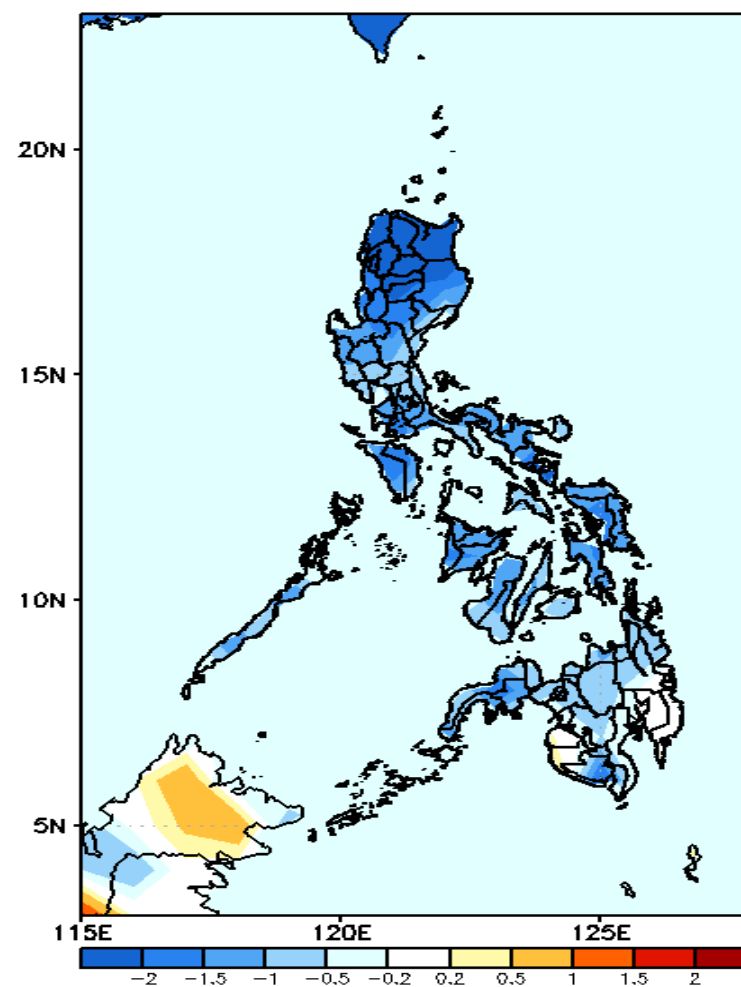
GEFS Week-1 T2m Anomaly
Valid: 20210408 – 20210414



2m Temperature Week 1: April 08-14, 2021

Slightly cooler to cooler than average surface air temperature will likely experience in most parts of Luzon and Visayas while average to slightly warmer temperature in Mindanao during the forecast period.

GEFS Week-2 T2m Anomaly
Valid: 20210415 – 20210421



2m Temperature Week 2: April 15-21, 2021

Slightly cooler to cooler than average surface air temperature will likely experience in most parts of the country except with some patches of Average temperature in southern Mindanao during the forecast period.