



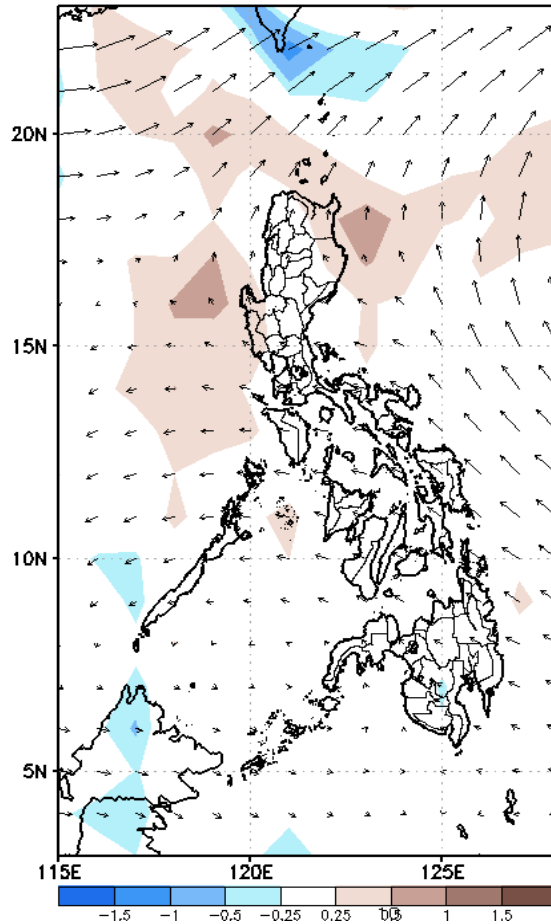
Week 1 & Week 2 Forecast for the Philippines using GEFS Model



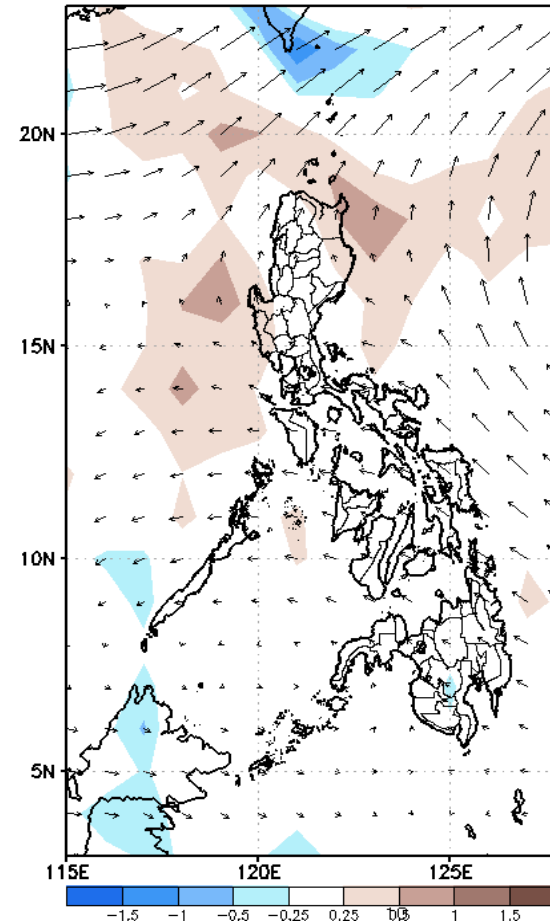
GEFS Week-1 Forecasts: Wind Anomaly Forecast

Week 1: Dec 09-15, 2022

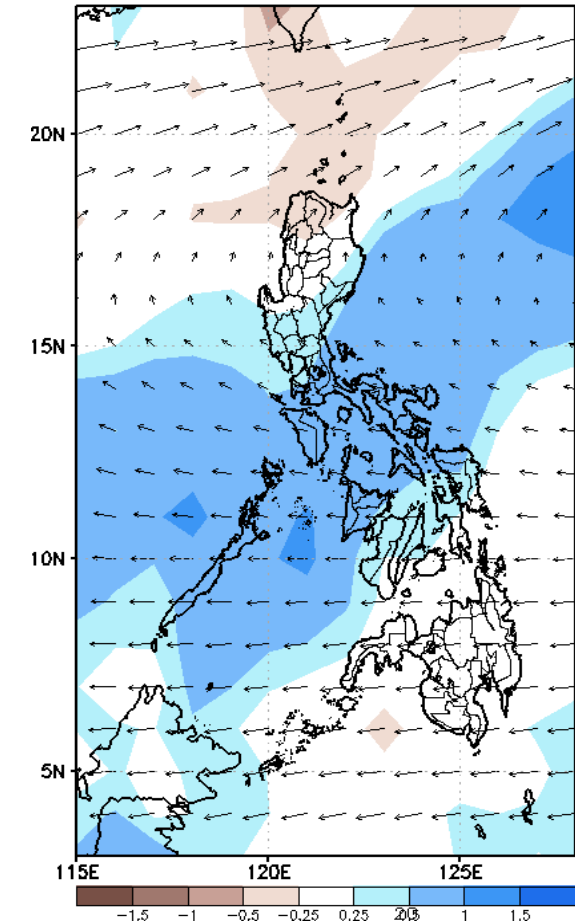
GEFS Week-1 850-hPa Divergence and Wind Anomaly
Valid: 20221209 - 20221215



GEFS Week-1 700-hPa Divergence and Wind Anomaly
Valid: 20221209 - 20221215



GEFS Week-1 200-hPa Divergence and Wind Anomaly
Valid: 20221209 - 20221215

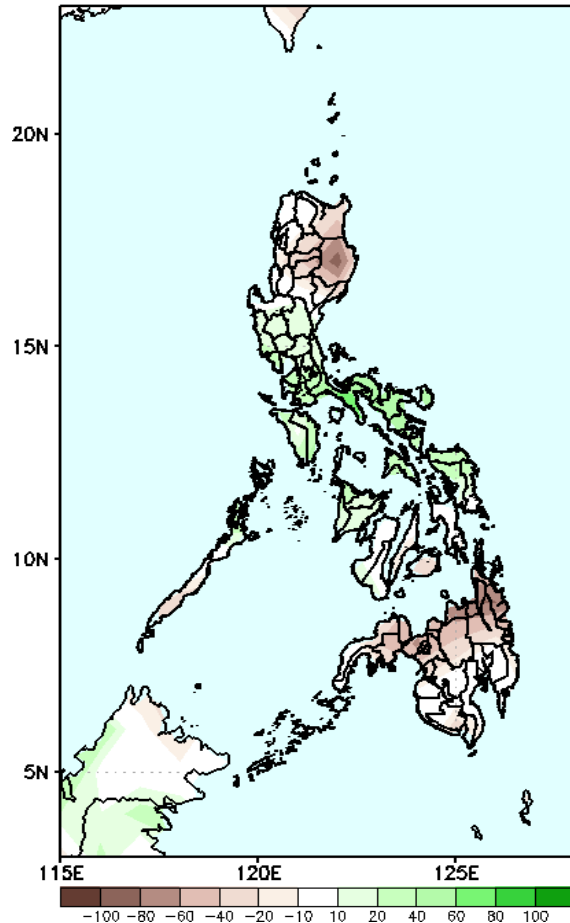


Northeast Monsoon is forecasted to continue affecting Northern and Extreme Northern Luzon; Easterlies affecting the rest of the country. A cyclonic circulation is forecasted to affect the eastern sections of the country during the forecast period.

Precipitation Anomaly and Exceedance Probability > 25/50 mm

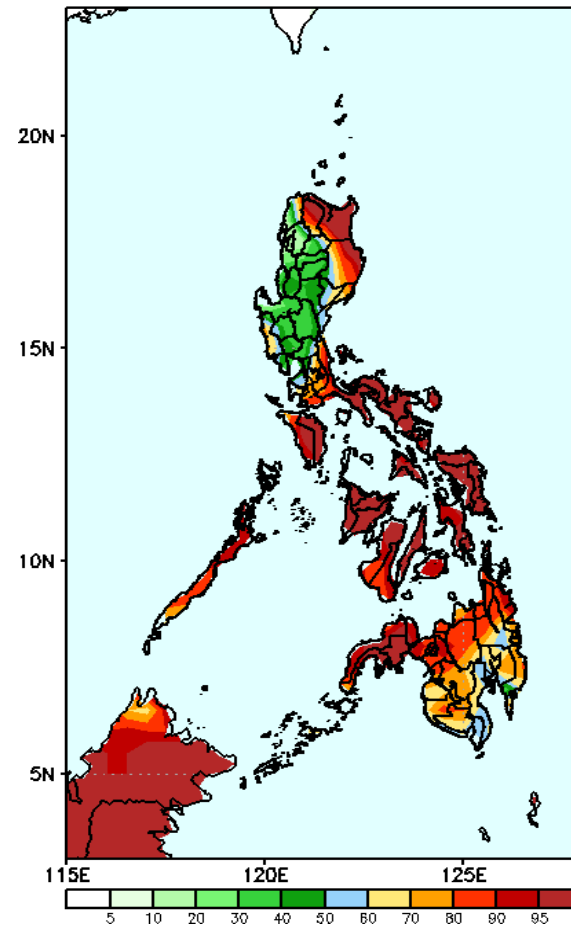
Week 1: Dec 09-15, 2022

GEFS Week-1 Precip Anomaly
Valid: 20221209 – 20221215



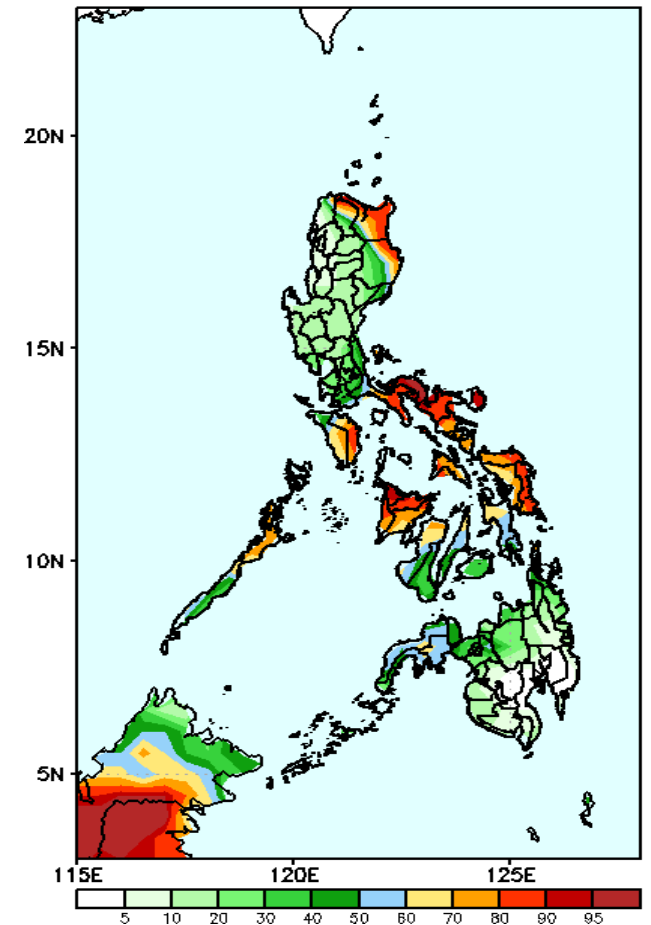
Rainfall deficit of 20-60mm in Isabela, some areas in Northern Luzon and northern Mindanao while 20-60mm increase of rainfall is forecasted for the rest of the country during the forecast period.

GEFS Week-1 Exceedance Prob. > 25mm
Valid: 20221209 – 20221215



High probability of rainfall to exceed 25mm in Apayao, most parts of Eastern and Southern Luzon, Zambales and most parts of Visayas and Mindanao while less likely for the rest of Luzon during the forecast period.

GEFS Week-1 Exceedance Prob. > 50mm
Valid: 20221209 – 20221215

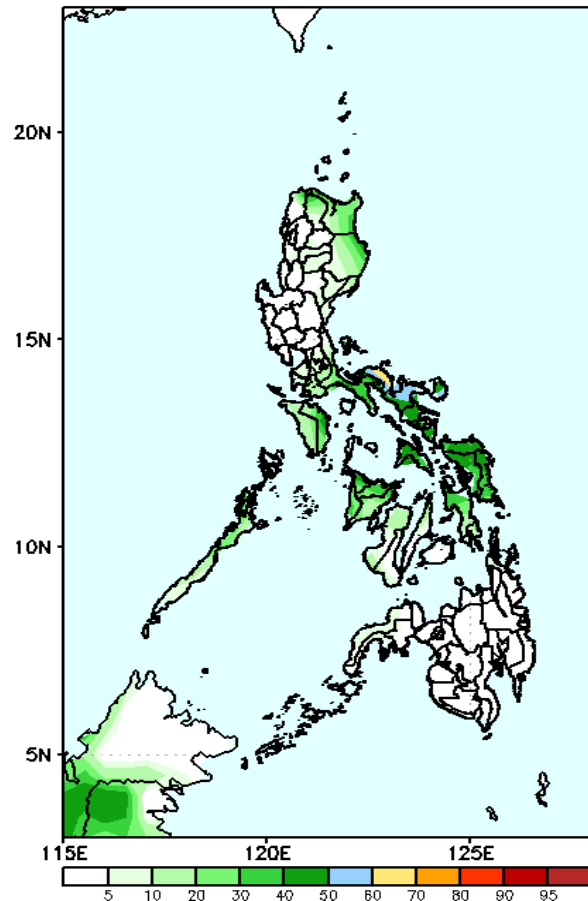


High probability of rainfall to exceed 50mm in Cagayan, some parts of Apayao, Isabela, Quezon and Palawan, most parts of Bicol region, Western and Eastern Visayas and some areas in Zamboanga Peninsula while less likely for the rest of the country during the forecast period.

Exceedance Probability > 100/150/200 mm

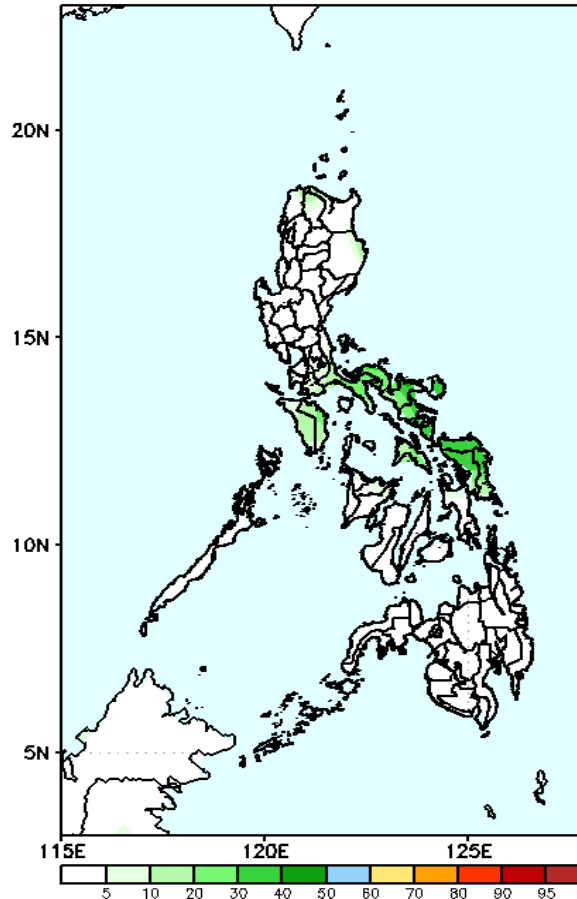
Week 1: Dec 09-15, 2022

GEFS Week-1 Exceedance Prob. > 100mm
Valid: 20221209 – 20221215



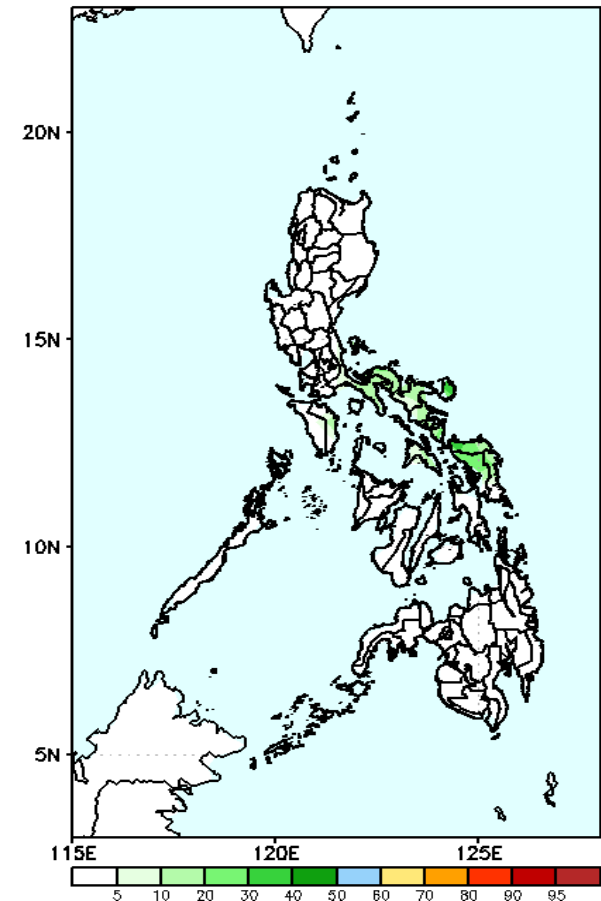
Low probability of rainfall to exceed 100mm in most parts of the country during the forecast period.

GEFS Week-1 Exceedance Prob. > 150mm
Valid: 20221209 – 20221215



Low probability of rainfall to exceed 150mm in most parts of the country during the forecast period.

GEFS Week-1 Exceedance Prob. > 200mm
Valid: 20221209 – 20221215

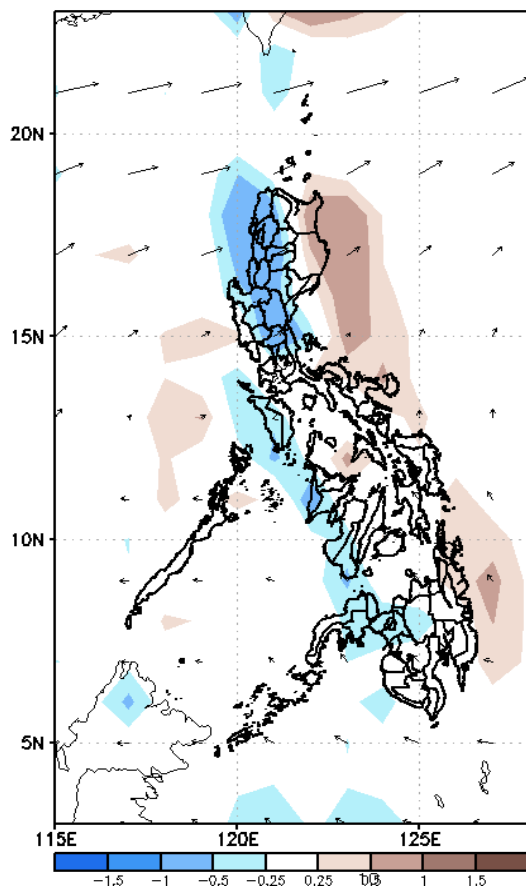


Low probability of rainfall to exceed 200mm in most parts of the country during the forecast period.

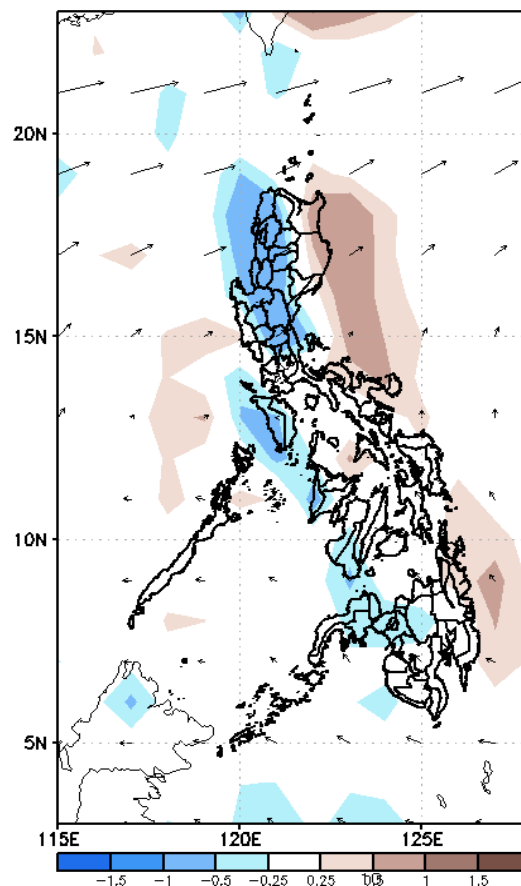
GEFS Week-2 Forecasts: Wind Anomaly Forecast

Week 2: Dec 16-22, 2022

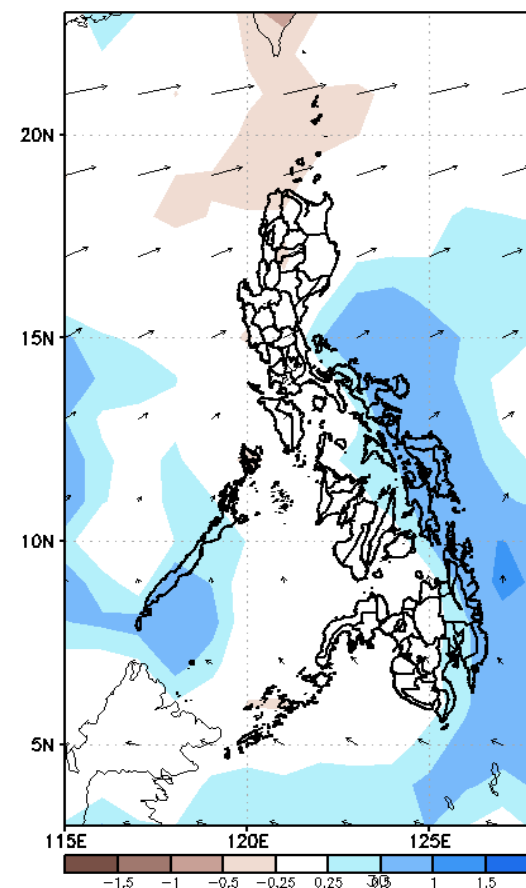
GEFS Week-2 850-hPa Divergence and Wind Anomaly
Valid: 20221216 - 20221222



GEFS Week-2 700-hPa Divergence and Wind Anomaly
Valid: 20221216 - 20221222



GEFS week-2 200-hPa Divergence and Wind Anomaly
Valid: 20221216 - 20221222

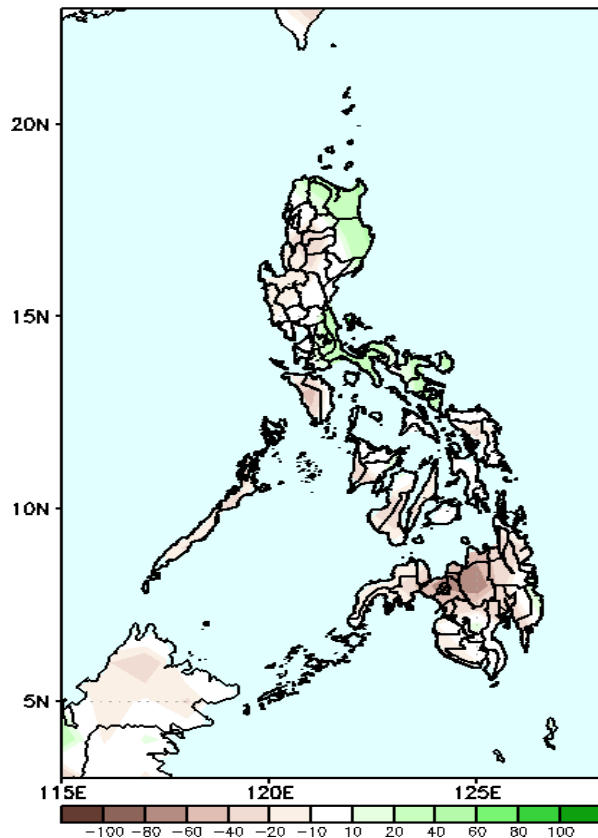


Northeast Monsoon will likely affect Northern and Central Luzon; while Easterlies is forecasted to affect the rest of the country during the forecast period.

Precipitation Anomaly and Exceedance Probability > 25/50 mm

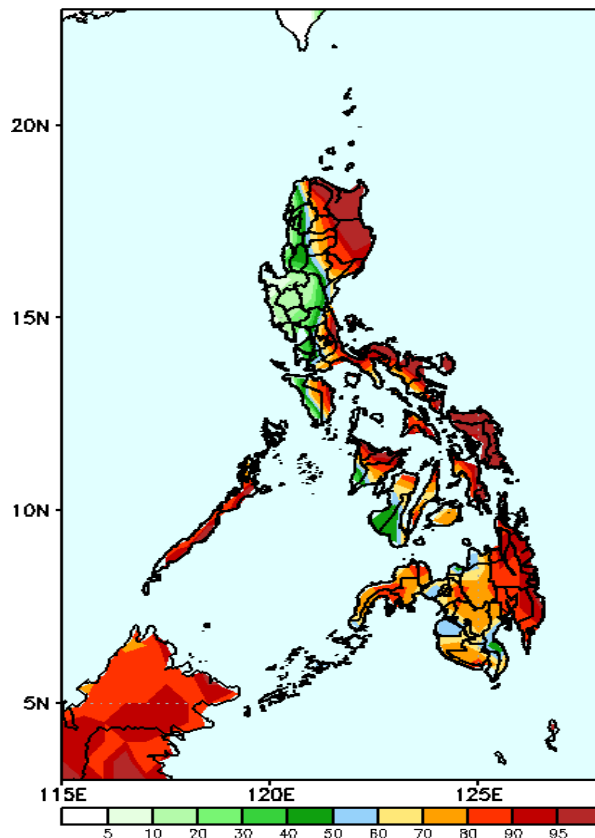
Week 2: Dec 16-22, 2022

GEFS Week-2 Precip Anomaly
Valid: 20221216 - 20221222



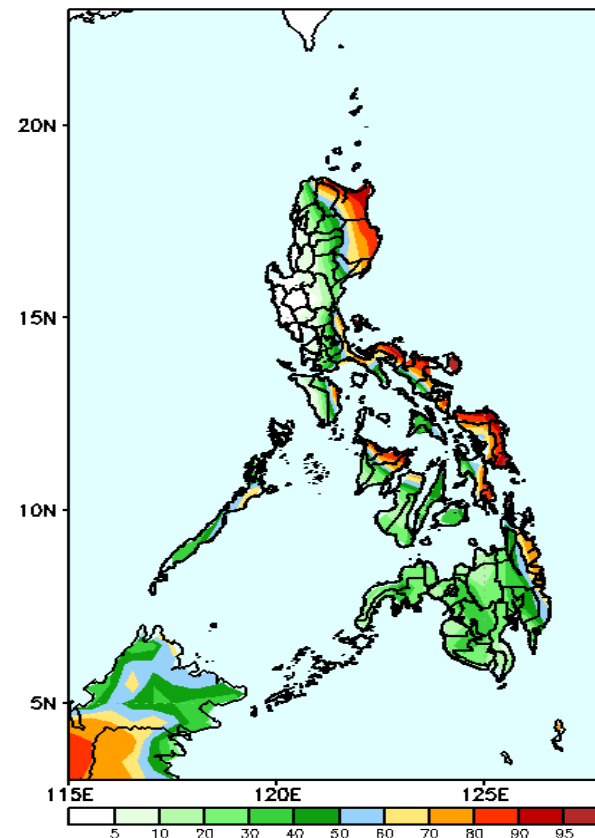
Increase of rainfall of 40-60mm is expected in Eastern Luzon and Bicol region while 20-60mm rainfall deficit is forecasted for the rest of the country during the forecast period.

GEFS Week-2 Exceedance Prob. > 25mm
Valid: 20221216 - 20221222



High probability of rainfall to exceed 25mm in the eastern sections of the country, most parts of CAR and Southern Luzon and most parts of Visayas and Mindanao while less likely for the rest of the country during the forecast period.

GEFS Week-2 Exceedance Prob. > 50mm
Valid: 20221216 - 20221222

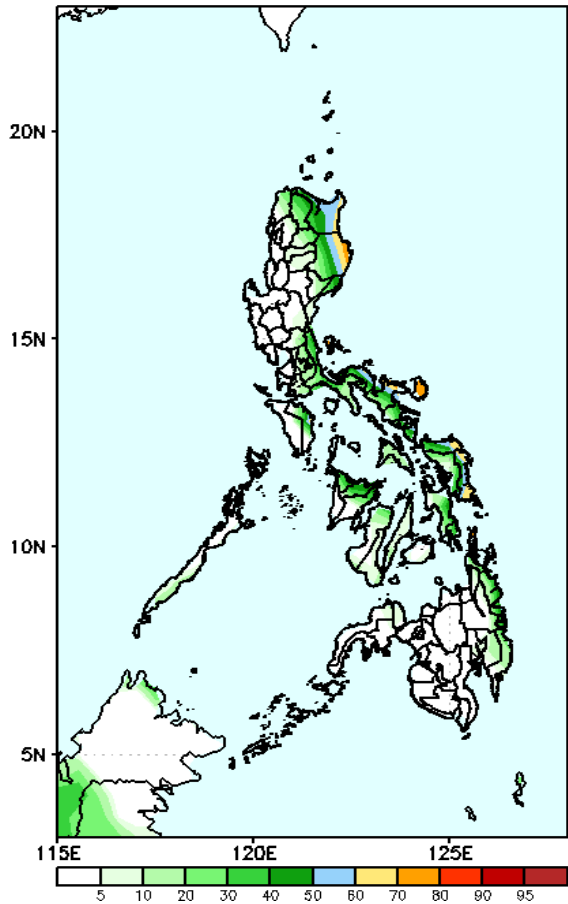


High probability of rainfall to exceed 50mm in the eastern sections of the country, some areas in Western Visayas and Surigao del Sur while less likely for the rest of the country during the forecast period.

Exceedance Probability > 100/150/200 mm

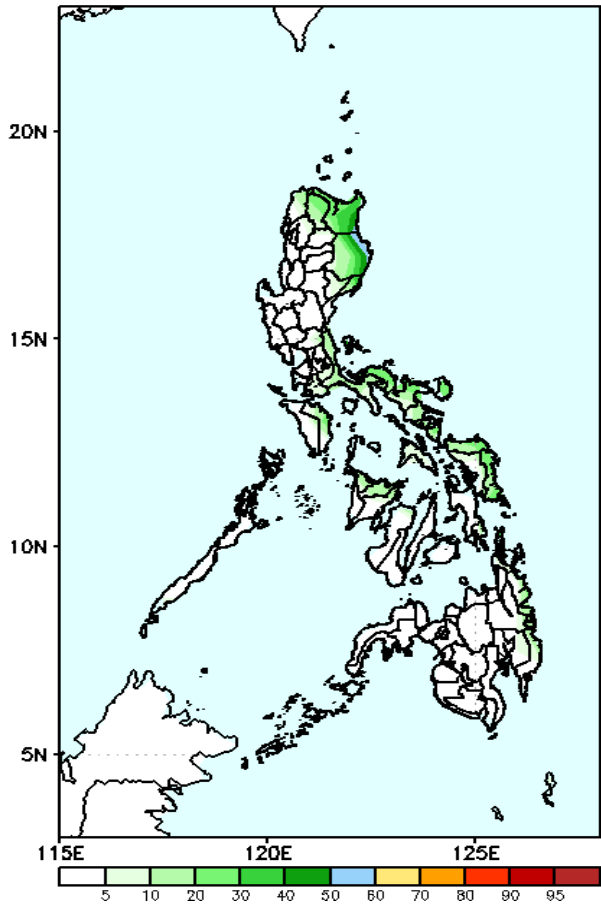
Week 2: Dec 16-22, 2022

GEFS Week-2 Exceedance Prob. > 100mm
Valid: 20221216 - 20221222



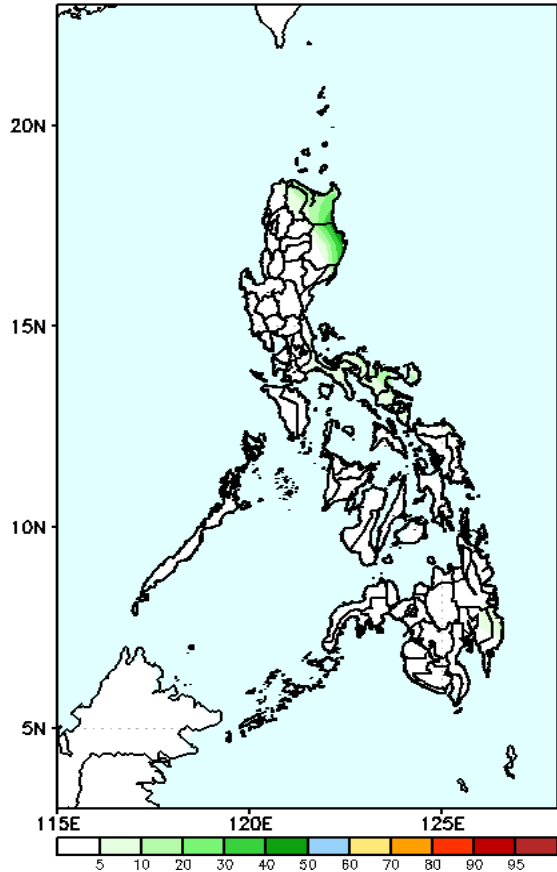
Low probability of rainfall to exceed 100mm in most parts of the country except the western sections of Cagayan and Isabela and Catanduanes during the forecast period.

GEFS Week-2 Exceedance Prob. > 150mm
Valid: 20221216 - 20221222



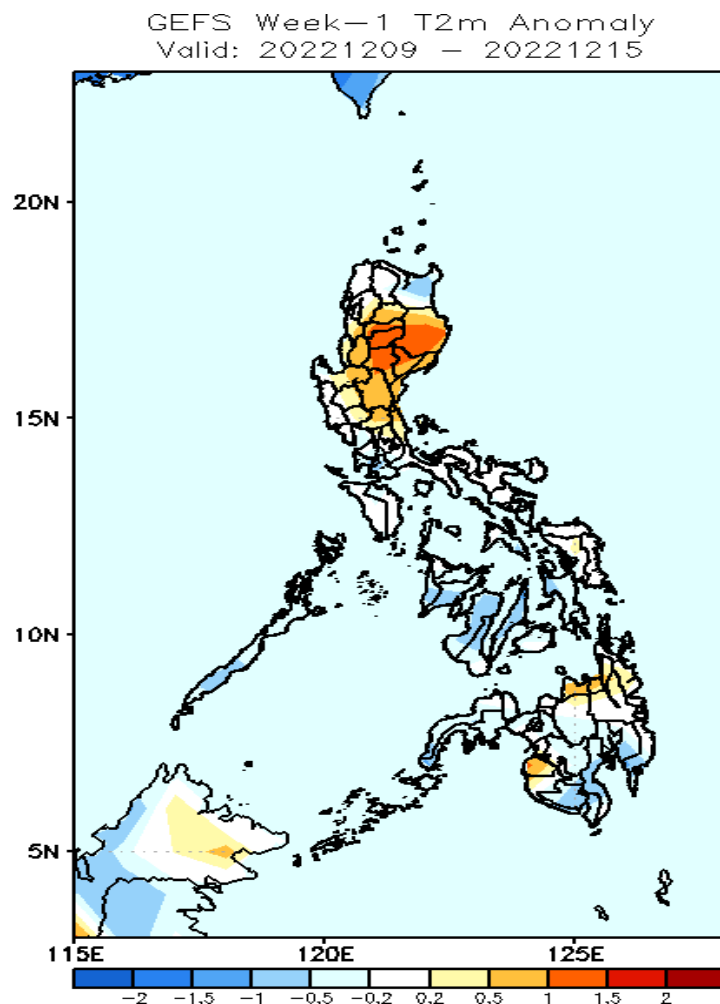
Low probability of rainfall to exceed 150mm in most parts of the country during the forecast period.

GEFS Week-2 Exceedance Prob. > 200mm
Valid: 20221216 - 20221222



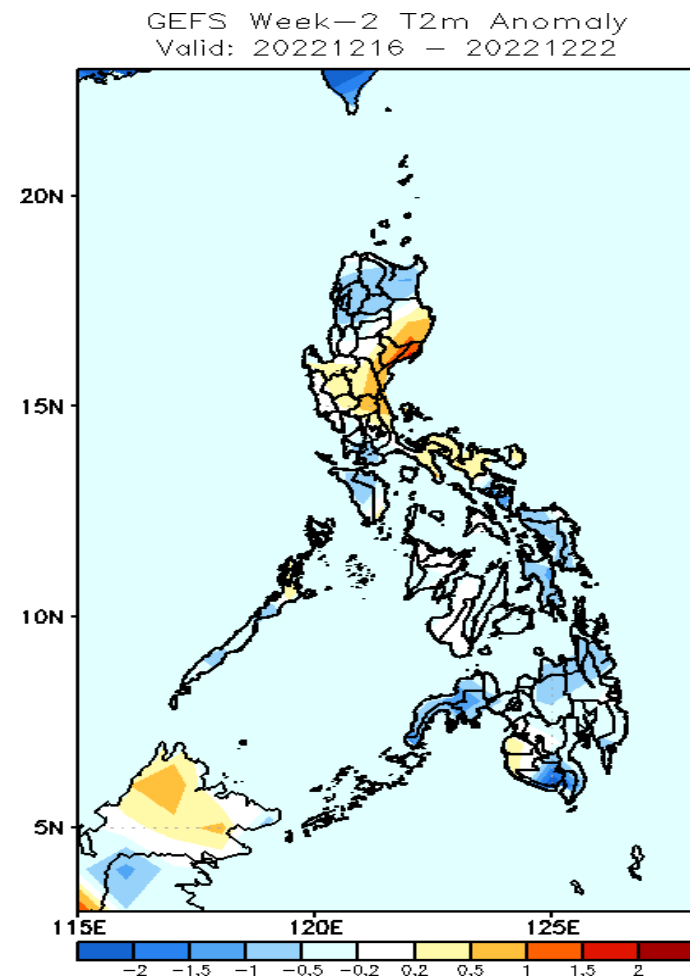
Low probability of rainfall to exceed 150mm in most parts of the country during the forecast period.

GEFS Week-1 & 2 Forecasts: T2m Anomaly



2m Temperature Week 1: Dec 09-15, 2022

Slightly warm to warmer than average surface air temperature will likely experience in most parts Northern and Central Luzon, Misamis Oriental, CARAGA, Maguindanao and Sultan Kudarat while average to slightly cooler is forecasted for the rest of the country during the forecast period.



2m Temperature Week 2: Dec 16-22, 2022

Slightly warmer to warmer than average surface air temperature will likely experience in Isabela, most parts Central Luzon, Bicol region, Maguindanao and Sultan Kudarat while average to slightly cooler temperatures is forecasted for the rest of the country during the forecast period.