



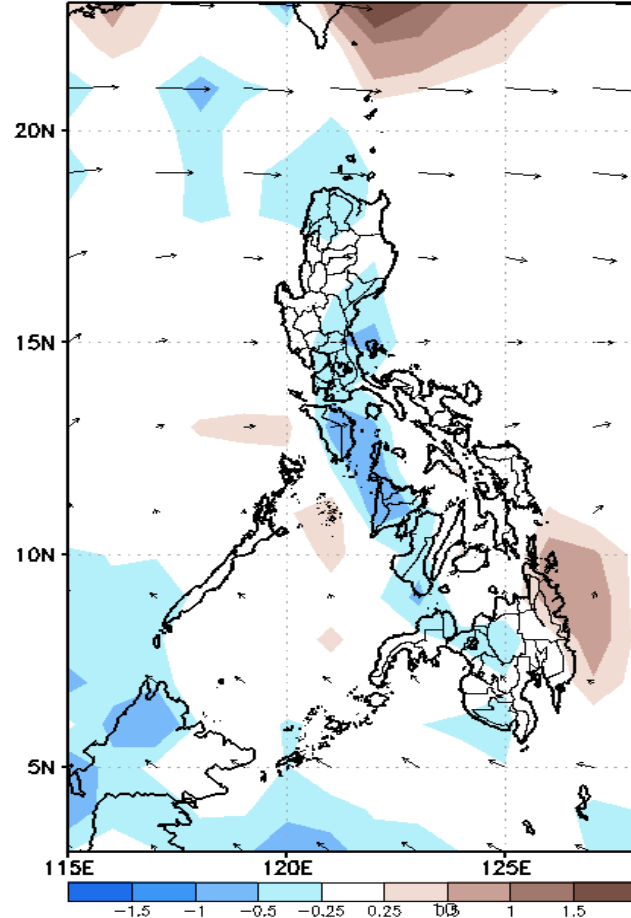
Week 1 & Week 2 Forecast for the Philippines using GEFS Model



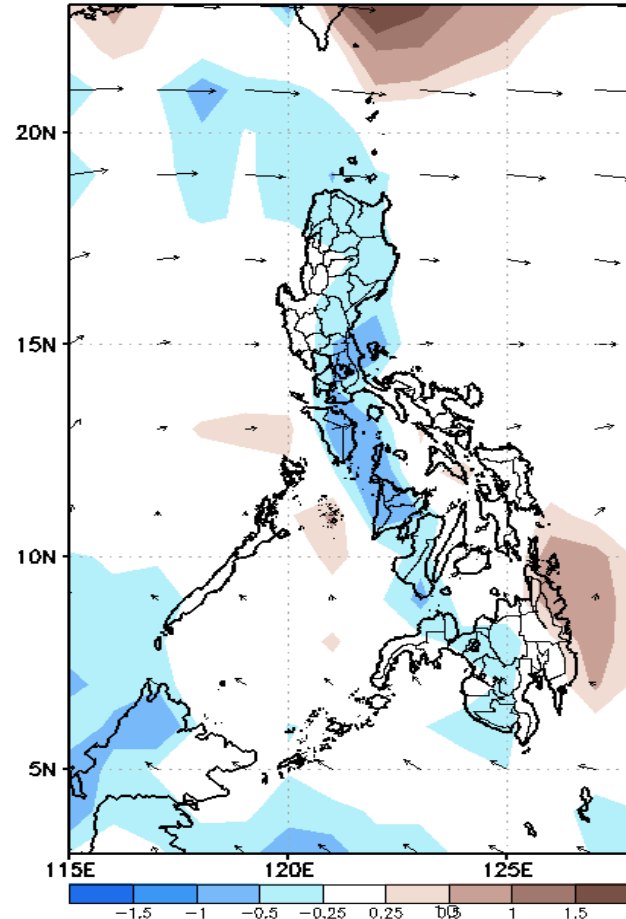
GEFS Week-1 Forecasts: Divergence & Wind Anomaly

Week 1: Feb 09-15, 2022

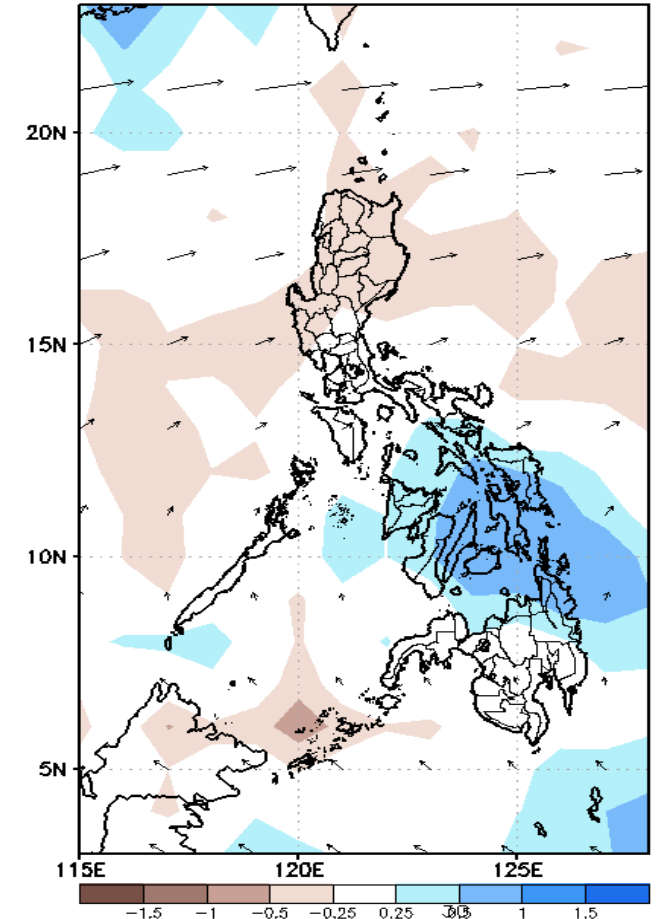
GEFS Week-1 850-hPa Divergence and Wind Anom
Valid: 20220209 - 20220215



GEFS Week-1 700-hPa Divergence and Wind Anom
Valid: 20220209 - 20220215



GEFS Week-1 200-hPa Divergence and Wind Anom
Valid: 20220209 - 20220215



Upper and low level Divergence suggest a likelihood of light to moderate precipitation in Sorsogon, most parts of Visayas, CARAGA and Misamis Oriental. Easterlies affecting the rest of the country during the forecast period.

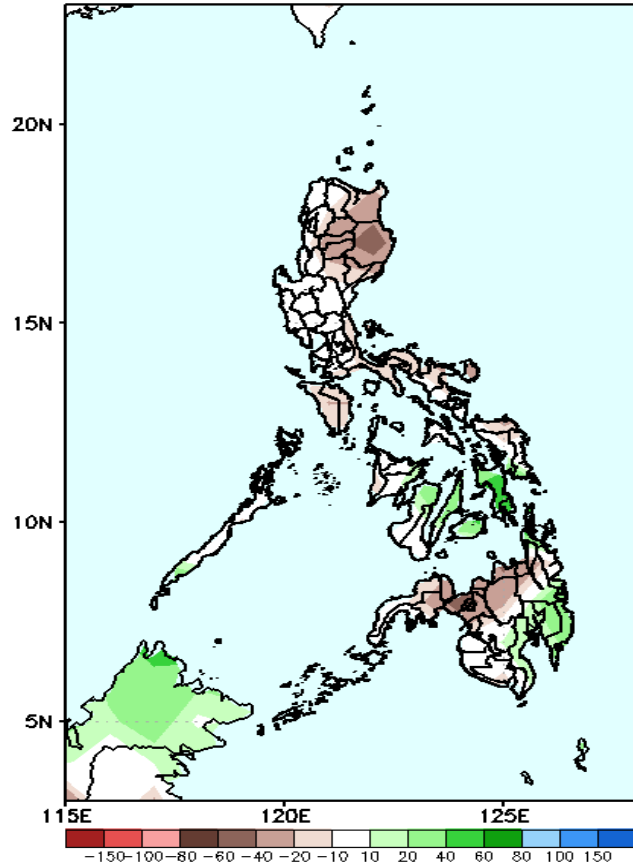
19
SA



Precipitation Anomaly and Exceedance Probability > 25/50 mm

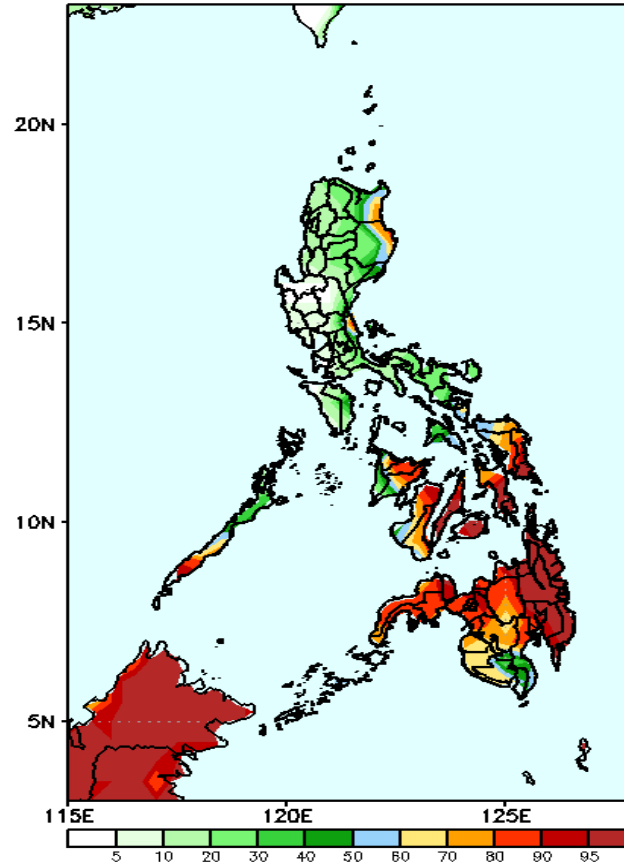
Week 1: Feb 09-15, 2022

GEFS Week-1 Precip. Anomaly
Valid: 20220209 – 20220215



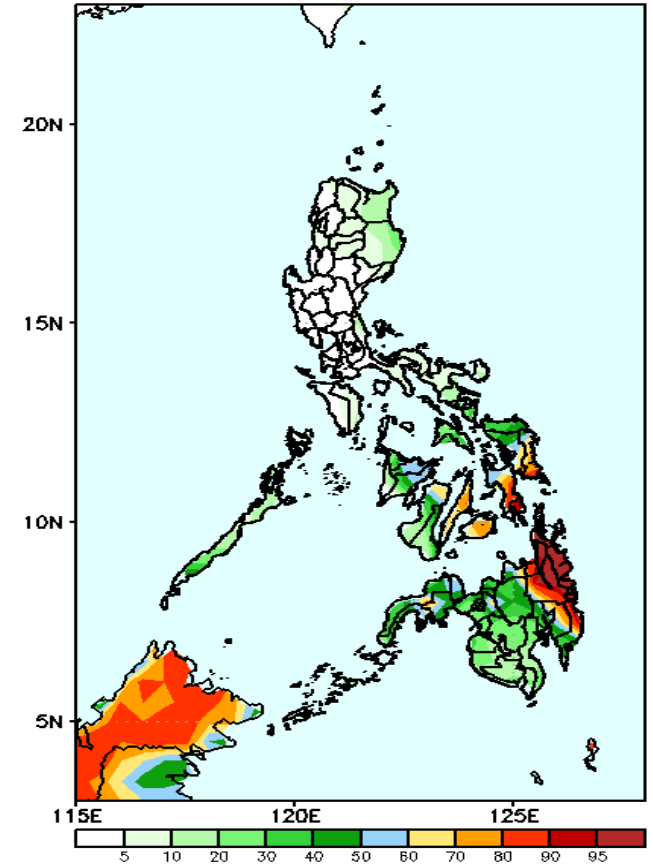
Rainfall deficit of 30-80mm is expected in most parts of the country except in the provinces of Leyte, Cebu, Bohol and southeastern Mindanao during the forecast period.

GEFS Week-1 Exceedance Prob. > 25mm
Valid: 20220209 – 20220215



High probability of rainfall to exceed 25mm in eastern parts of Cagayan & Isabela and most parts of Visayas & Mindanao while less likely for the rest of the country during the forecast period.

GEFS Week-1 Exceedance Prob. > 50mm
Valid: 20220209 – 20220215

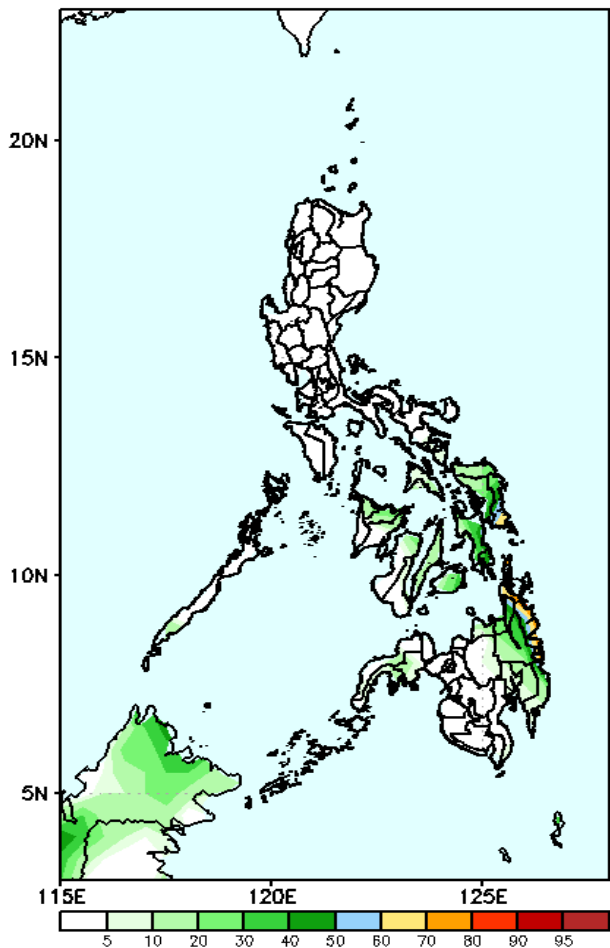


High probability of rainfall to exceed 50mm in Eastern Samar, provinces of Leyte, Bohol, Cebu, Compostela Valley, Davao Oriental and CARAGA Region while less likely for the rest of the country during the forecast period.

Exceedance Probability > 100/150/200 mm

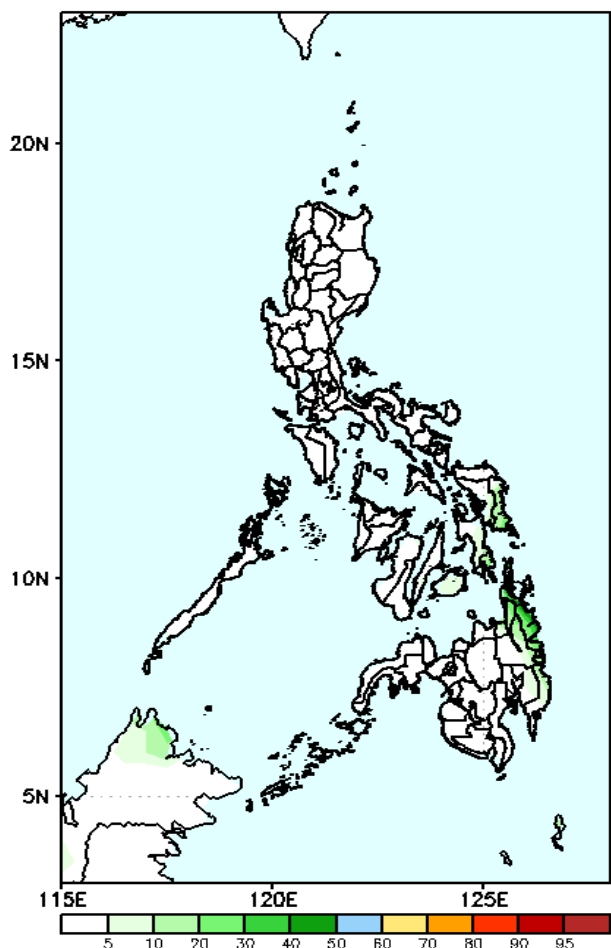
Week 1: Feb 09-15, 2022

GEFS Week-1 Exceedance Prob. > 100mm
Valid: 20220209 – 20220215



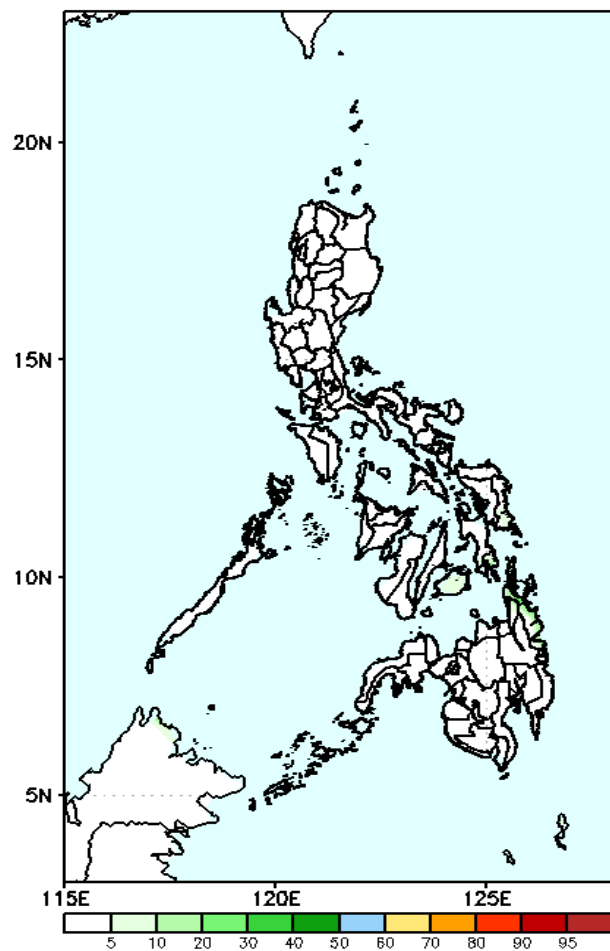
Low probability of rainfall to exceed 100mm in most parts of the country during the forecast period.

GEFS Week-1 Exceedance Prob. > 150mm
Valid: 20220209 – 20220215



Low probability of rainfall to exceed 150mm in most parts of the country during the forecast period.

GEFS Week-1 Exceedance Prob. > 200mm
Valid: 20220209 – 20220215



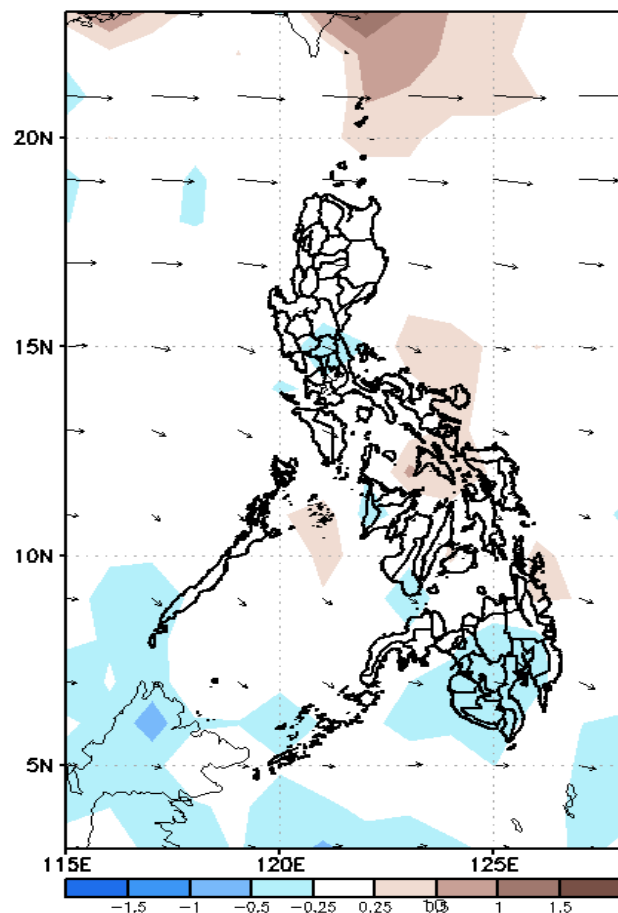
Low probability of rainfall to exceed 200mm in most parts of the country during the forecast period.



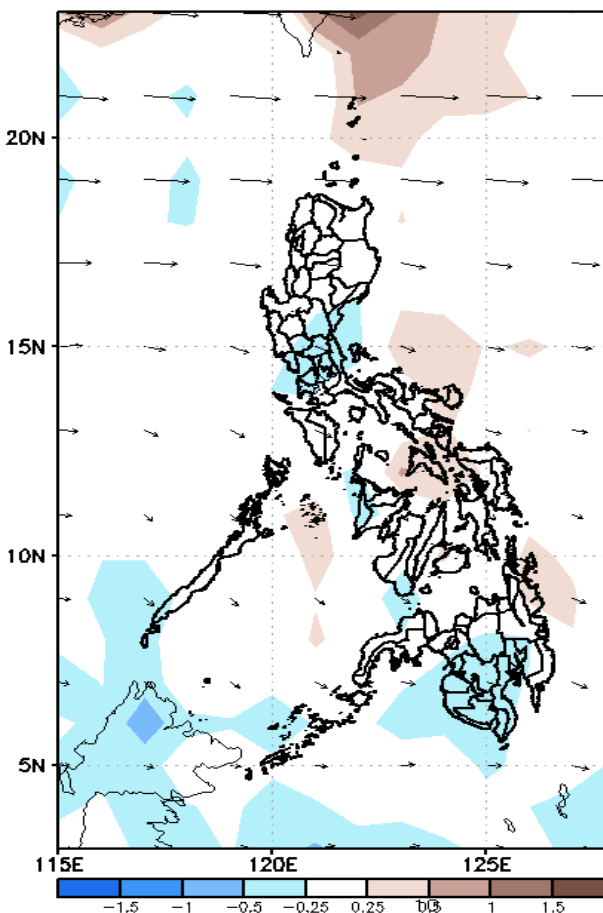
GEFS Week-2 Forecasts: Divergence & Wind Anomaly

Week 2: Feb 16- 22, 2022

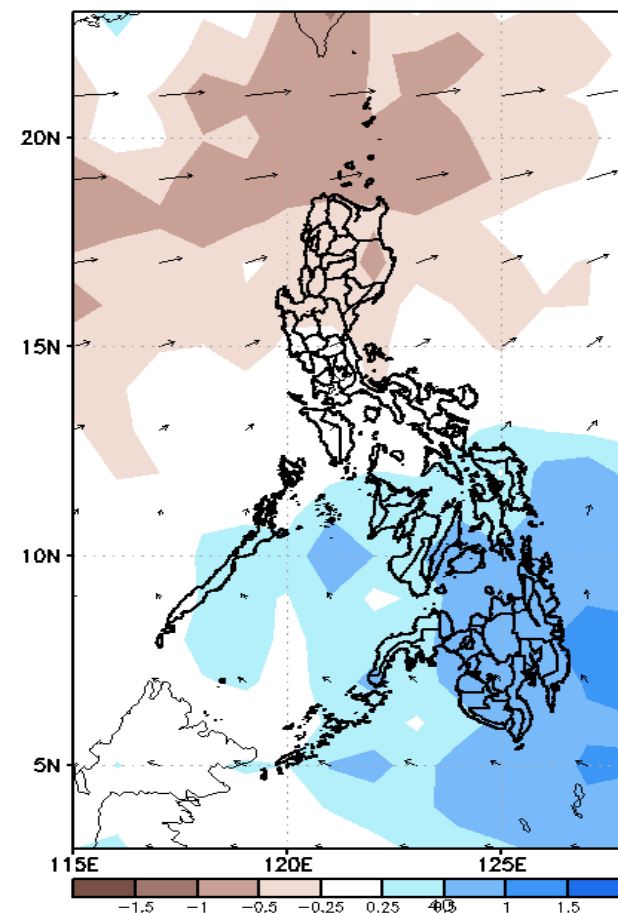
GEFS Week-2 850-hPa Divergence and Wind Anom
Valid: 20220216 - 20220222



GEFS Week-2 700-hPa Divergence and Wind Anom
Valid: 20220216 - 20220222



GEFS week-2 200-hPa Divergence and Wind Anom
Valid: 20220216 - 20220222



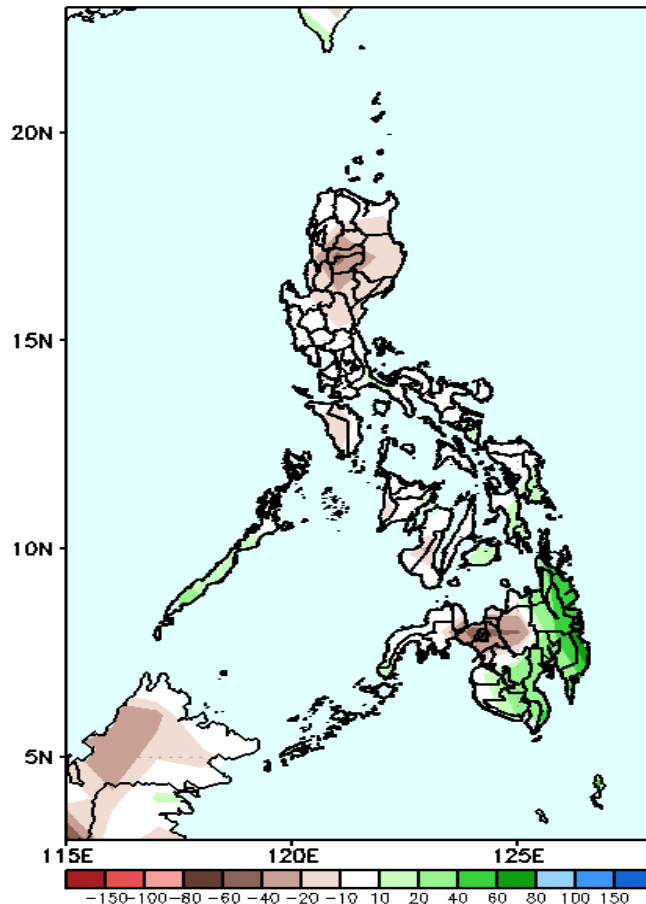
Upper and low level Divergence suggest a likelihood of light to moderate precipitation in Palawan and most parts of Visayas and Mindanao. Easterlies affecting the rest of the country during the forecast period.

19
SA

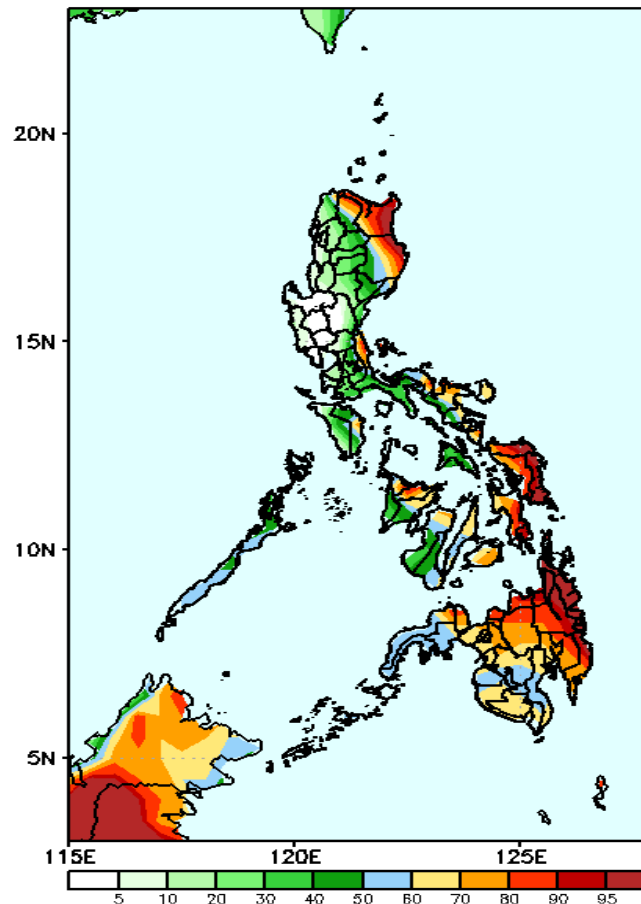
Precipitation Anomaly and Exceedance Probability > 25/50 mm

Week 2: Feb 16- 22, 2022

GEFS Week-2 Precip Anomaly
Valid: 20220216 - 20220222

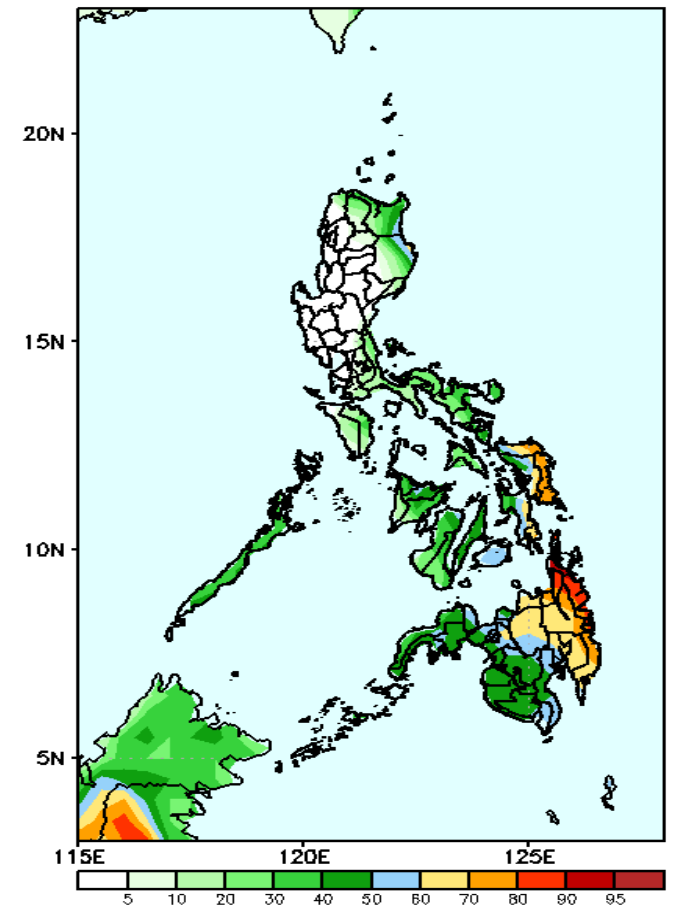


GEFS Week-2 Exceedance Prob. > 25mm
Valid: 20220216 - 20220222



High probability of rainfall to exceed 25mm in Apayao, Cagayan, Isabela, Bicol Region, Eastern Visayas, Bohol, Capiz and most parts of Mindanao while less likely for the rest of the country during the forecast period.

GEFS Week-2 Exceedance Prob. > 50mm
Valid: 20220216 - 20220222

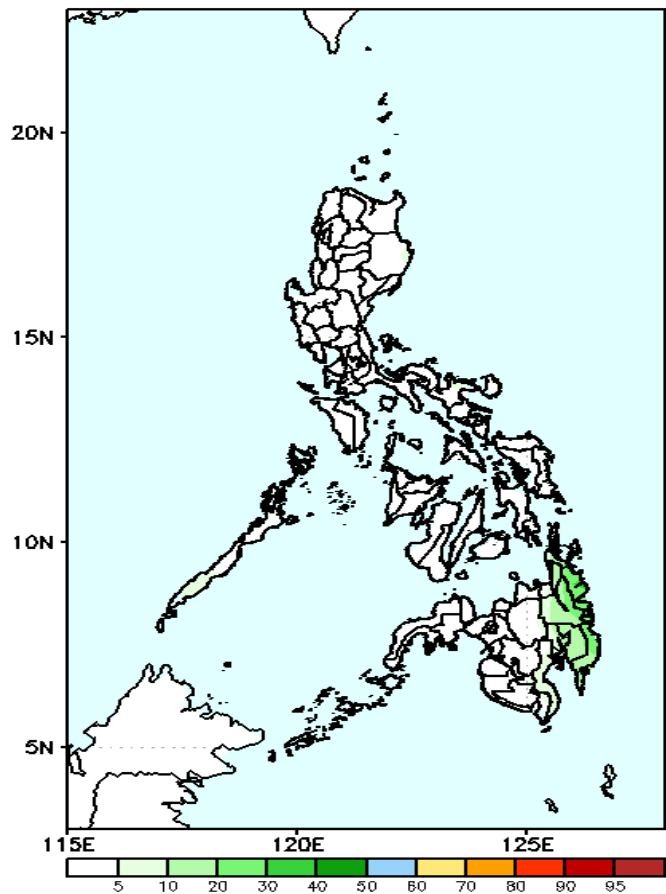


60-95% probability of rainfall to exceed 50mm in Eastern Samar and eastern parts of Mindanao while less likely for the rest of the country during the forecast period.

Exceedance Probability > 100/150/200 mm

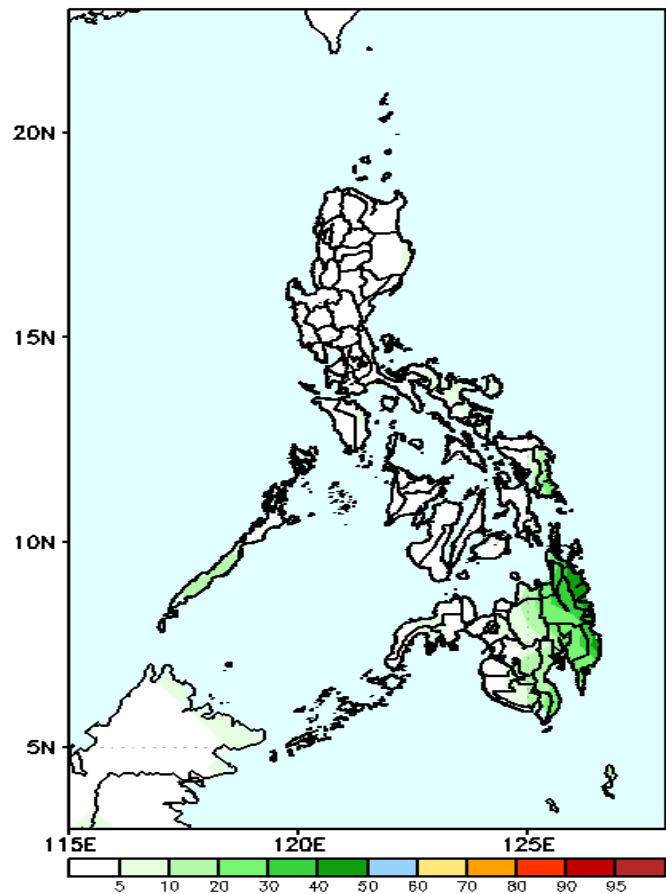
Week 2: Feb 16- 22, 2022

GEFS Week-2 Exceedance Prob. > 200mm
Valid: 20220216 – 20220222



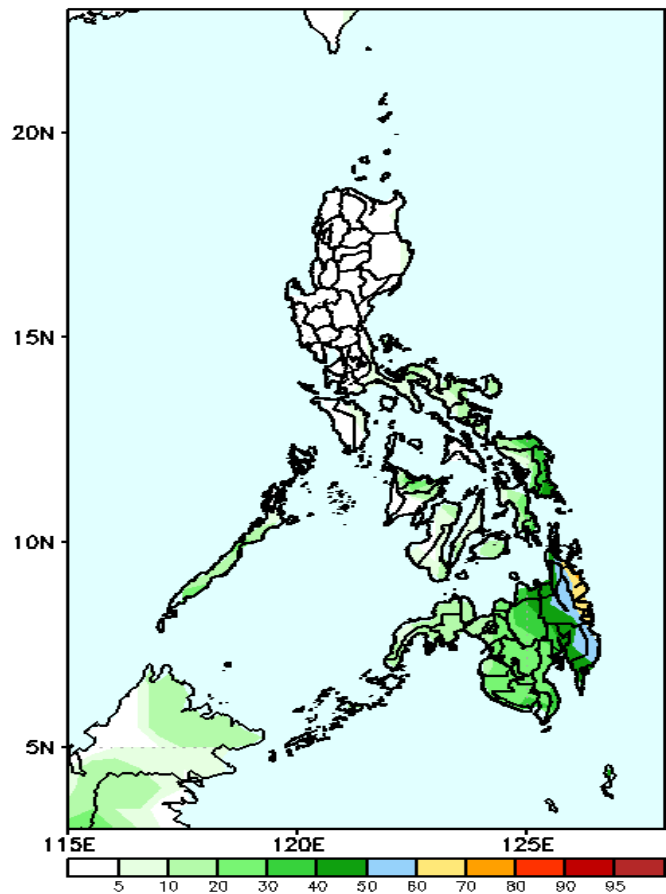
Low probability of rainfall to exceed 100mm in most parts of the country during the forecast period.

GEFS Week-2 Exceedance Prob. > 150mm
Valid: 20220216 – 20220222



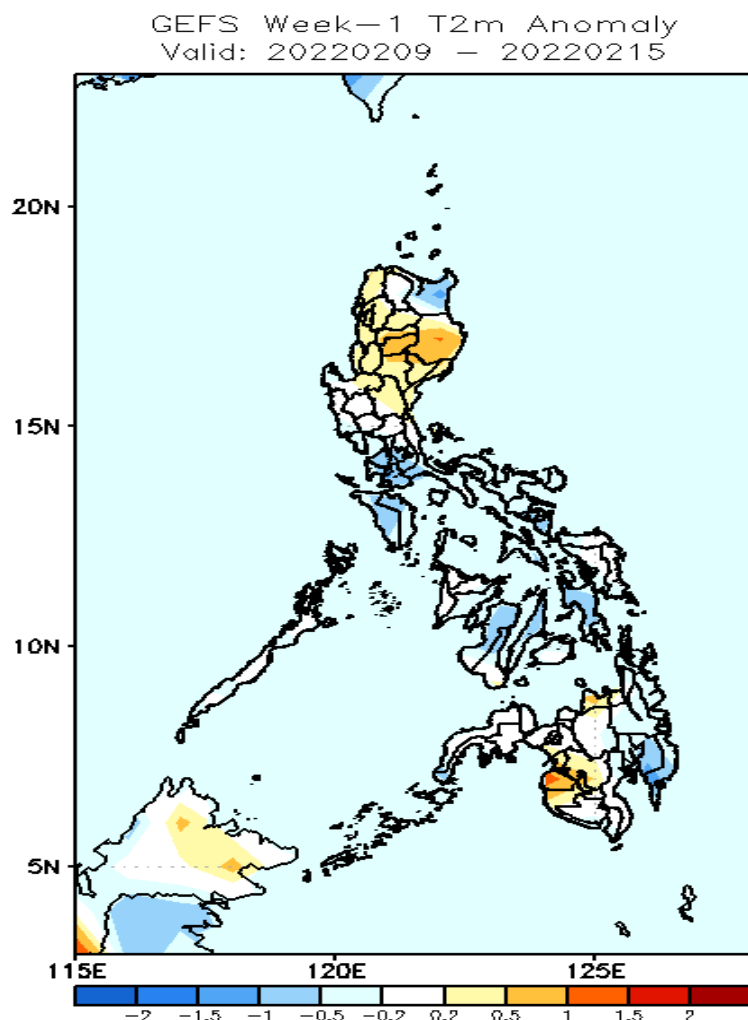
Low probability of rainfall to exceed 150mm in most parts of the country during the forecast period.

GEFS Week-2 Exceedance Prob. > 100mm
Valid: 20220216 – 20220222



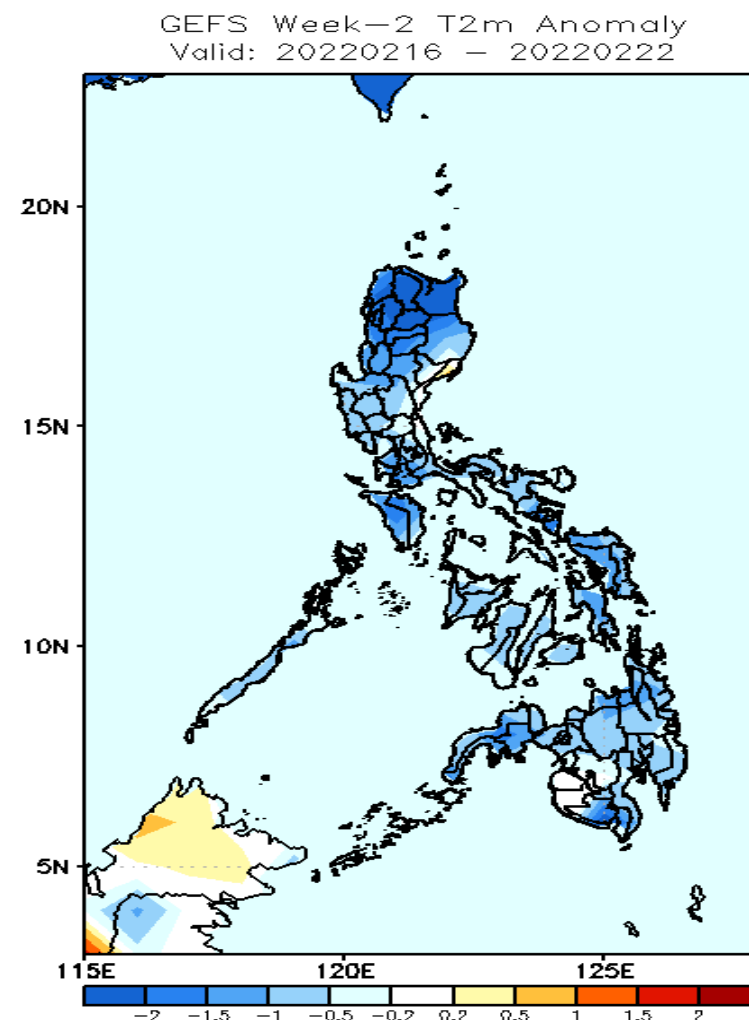
Low probability of rainfall to exceed 200mm in most parts of the country during the forecast period.

GEFS Week-1 & 2 Forecasts: T2m Anomaly



2m Temperature Week 1: Feb 09-15, 2022

Slightly warmer to warmer than average surface air temperature will likely experience in most parts of Ilocos & Cordillera Region, Isabela, Misamis Oriental and Maguindanao while average to slightly cooler for the rest of the country during the forecast period.



2m Temperature Week 2: Feb 16-22, 2022

Cooler than average surface air temperature will likely experience in most parts of the country during the forecast period.