



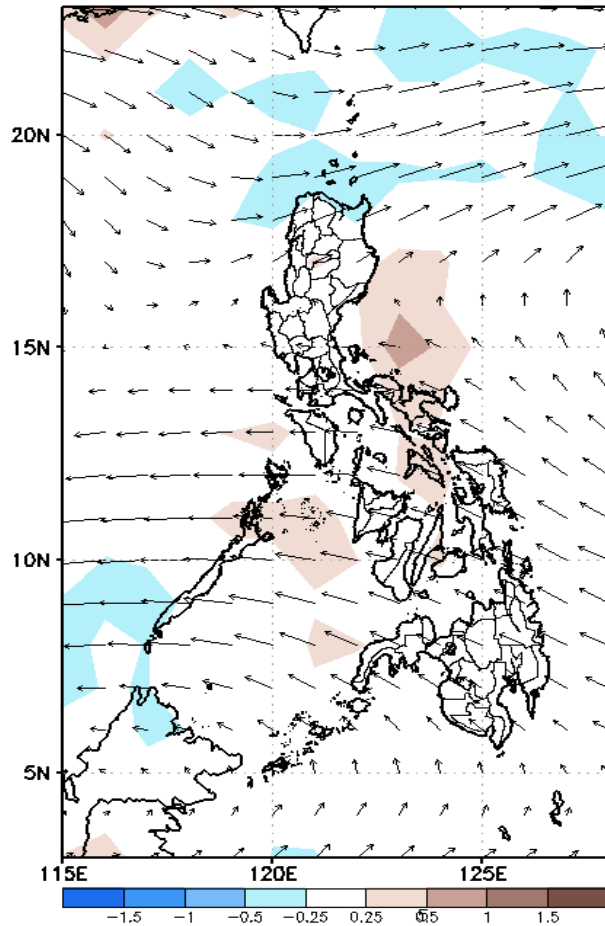
Week 1 & Week 2 Forecast for the Philippines using GEFS Model



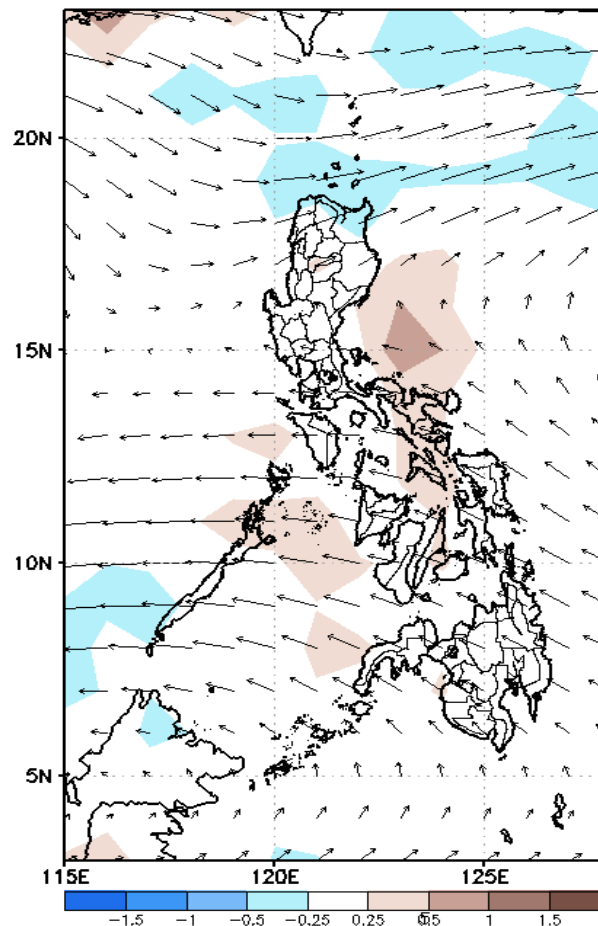
GEFS Week-1 Forecasts: Divergence & Wind Anomaly

Week 1: Mar 09-15, 2022

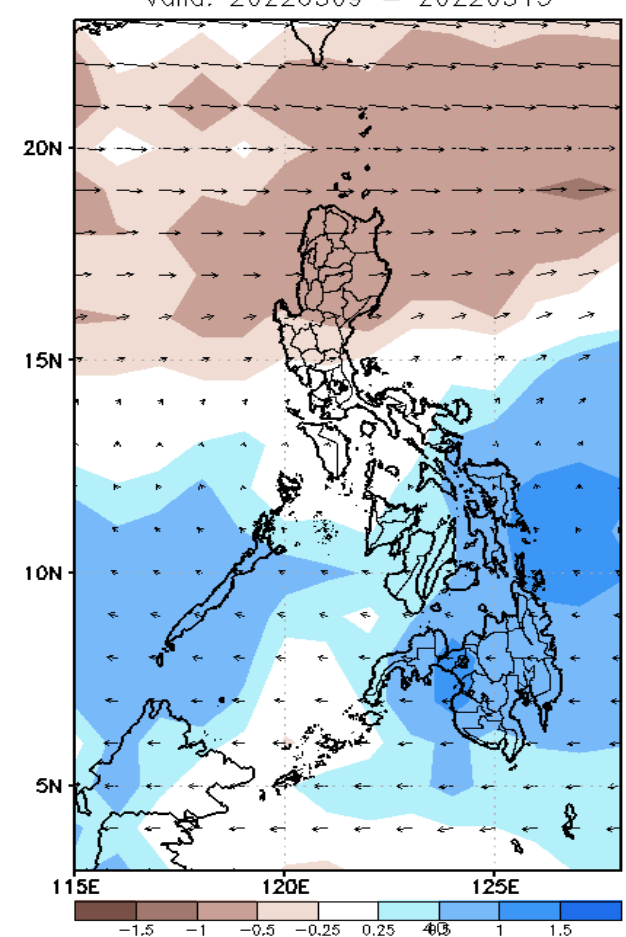
GEFS Week-1 850-hPa Divergence and Wind Anom
Valid: 20220309 - 20220315



GEFS Week-1 700-hPa Divergence and Wind Anom
Valid: 20220309 - 20220315



GEFS Week-1 200-hPa Divergence and Wind Anom
Valid: 20220309 - 20220315

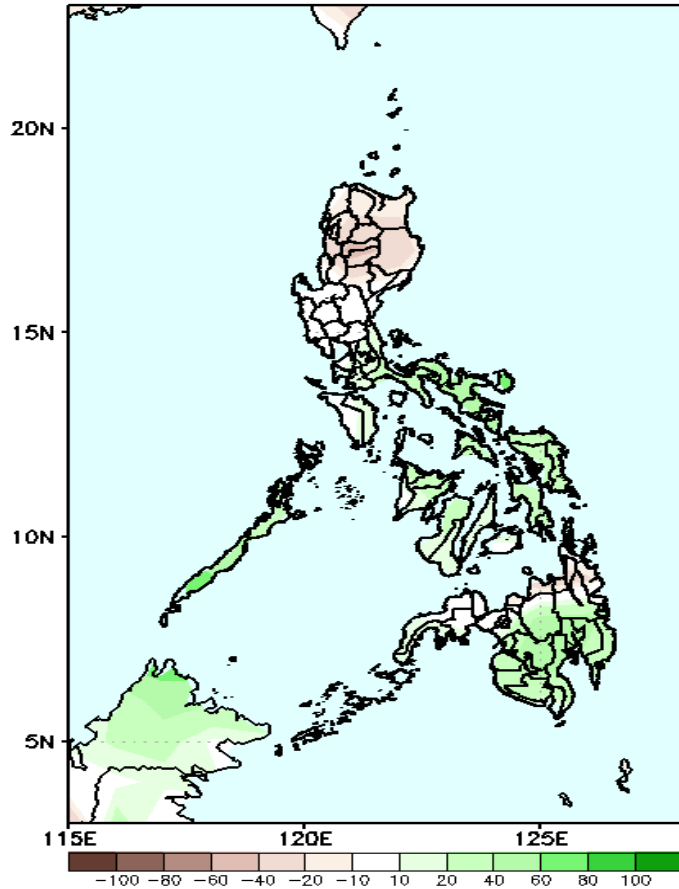


Upper and low level Divergence suggest a likelihood of light to moderate precipitation in Bicol Region and most parts of Visayas and Mindanao. Northeast Monsoon affecting some parts of Northern Luzon while Easterlies affecting most parts of the country during the forecast period.

Precipitation Anomaly and Exceedance Probability > 25/50 mm

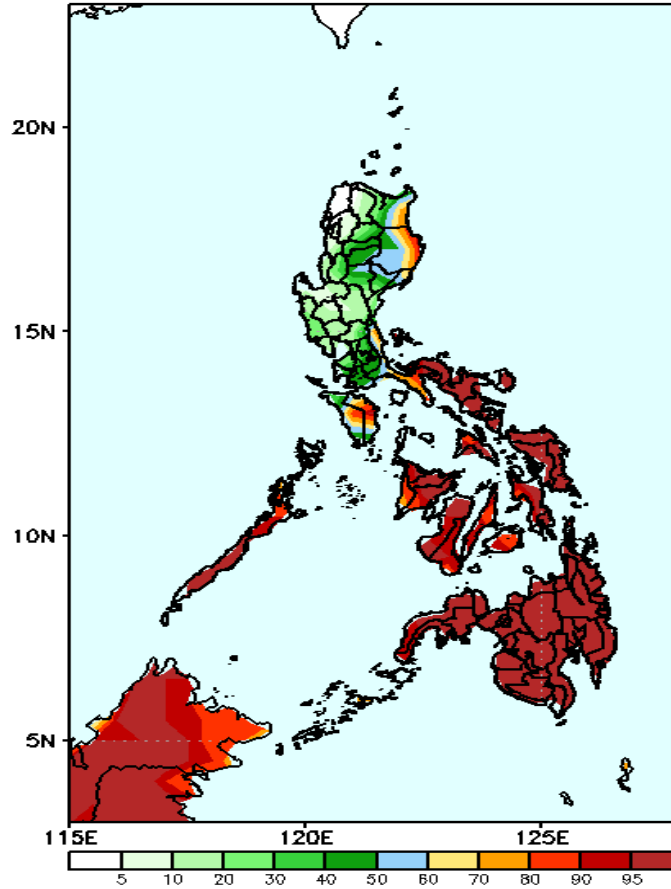
Week 1: Mar 09-15, 2022

GEFS Week-1 Precip Anomaly
Valid: 20220309 - 20220315



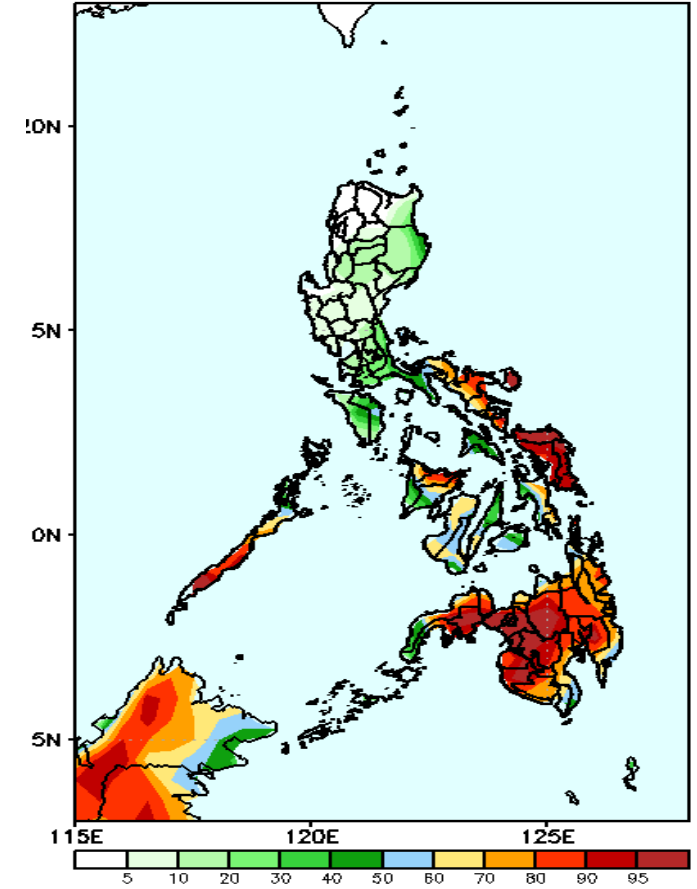
Rainfall deficit of 10-40mm in Northern Luzon while 40-100mm. increase of rainfall in Bicol Region, Visayas and Mindanao during the forecast period.

GEFS Week-1 Exceedance Prob. > 25mm
Valid: 20220309 - 20220315



High probability of rainfall to exceed 25mm in eastern Cagayan & Isabela, Mindoro, Palawan, most parts of Bicol Region, Visayas and Mindanao while less likely for the rest of Luzon during the forecast period.

GEFS Week-1 Exceedance Prob. > 50mm
Valid: 20220309 - 20220315



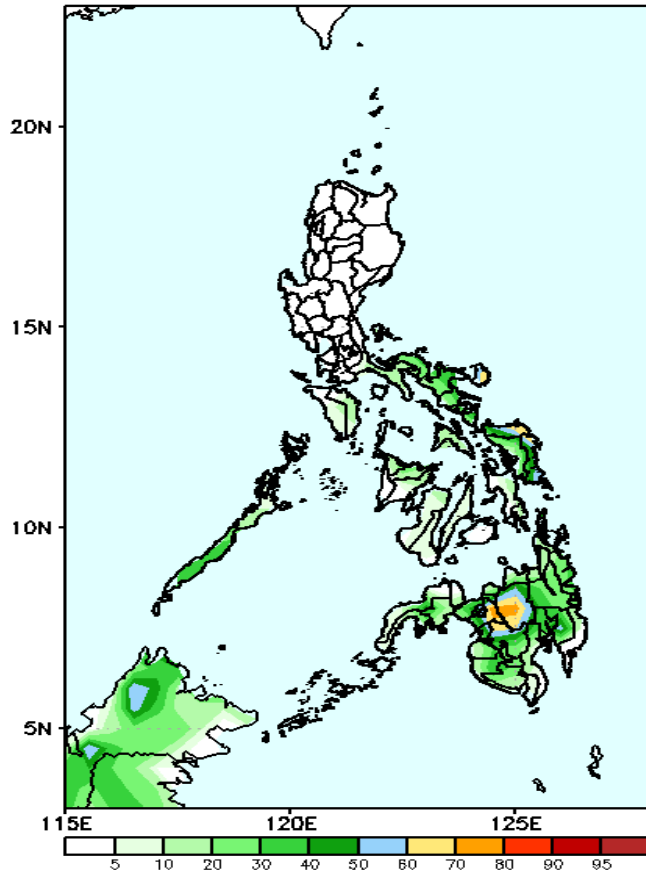
High probability of rainfall to exceed 50mm in Bicol Region, Eastern Visayas, Aklan, Capiz, and most parts of Mindanao while less likely for the rest of the country during the forecast period.



Exceedance Probability > 100/150/200 mm

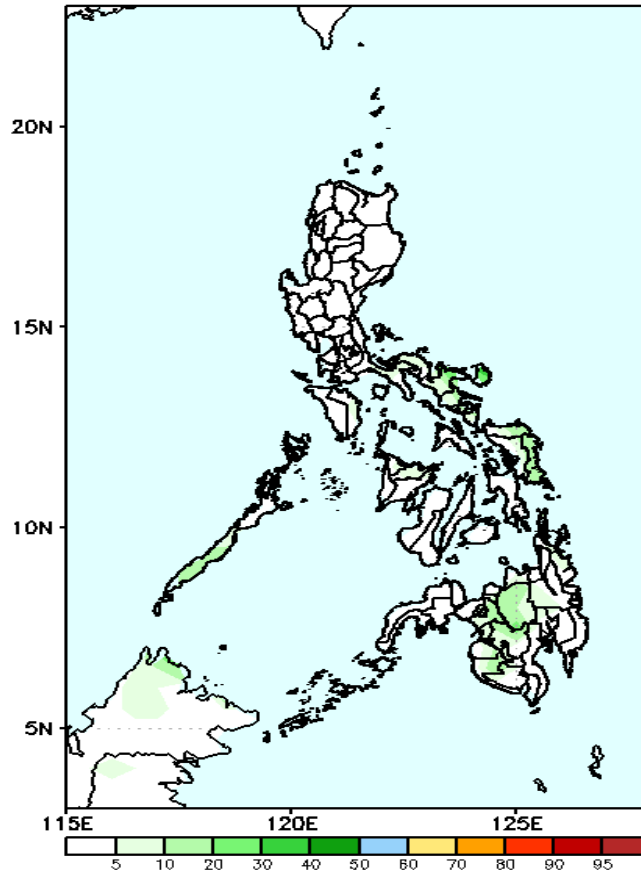
Week 1: Mar 09-15, 2022

GEFS Week-1 Exceedance Prob. > 100mm
Valid: 20220309 – 20220315



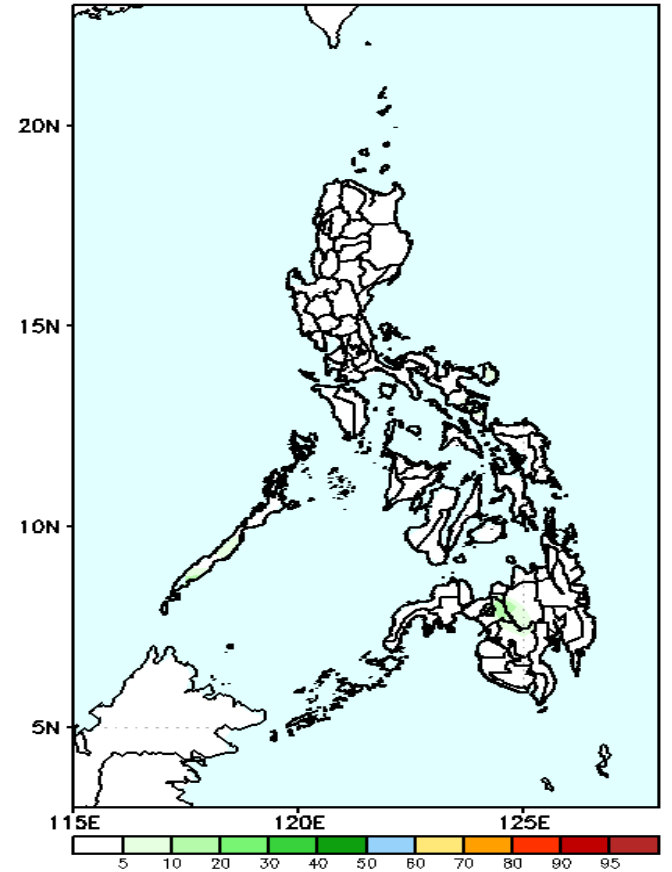
Low probability of rainfall to exceed 100mm in most parts of the country except in Lanao del Sur & Bukidnon where there is 60-80% chance during the forecast period.

GEFS Week-1 Exceedance Prob. > 150mm
Valid: 20220309 – 20220315



Low probability of rainfall to exceed 150mm in most parts of the country during the forecast period.

GEFS Week-1 Exceedance Prob. > 200mm
Valid: 20220309 – 20220315



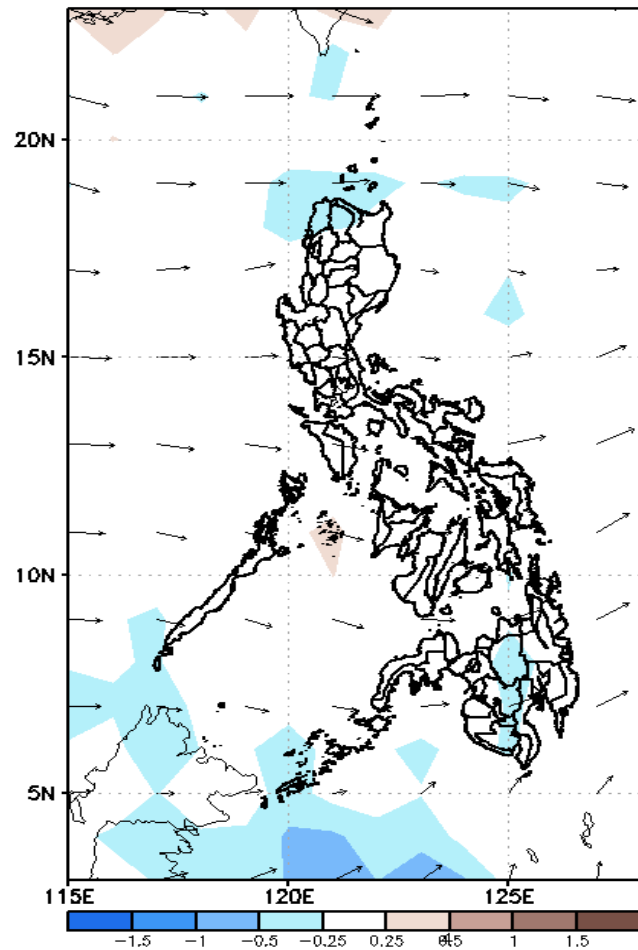
Low probability of rainfall to exceed 200mm in most parts of the country during the forecast period.



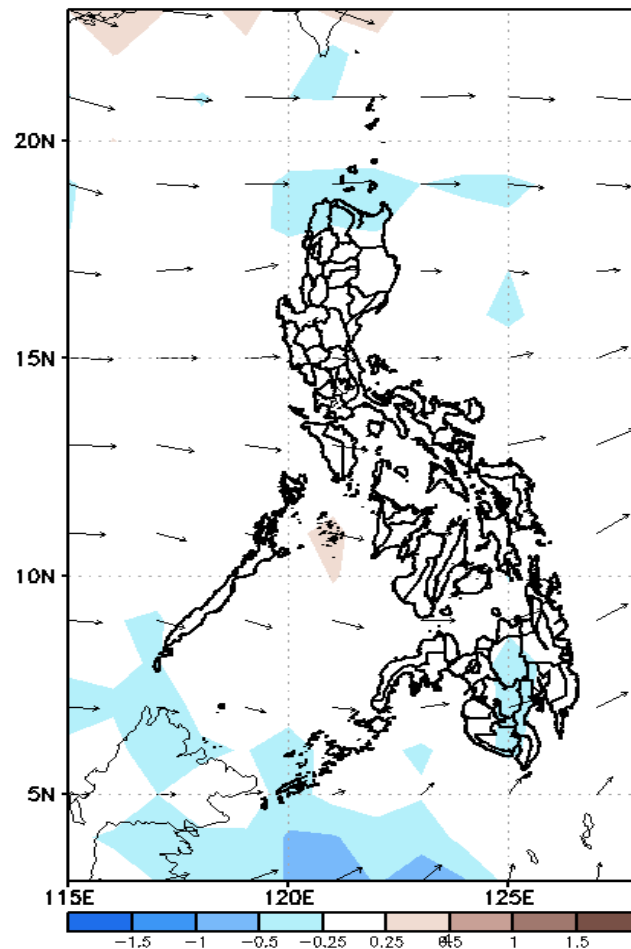
GEFS Week-2 Forecasts: Divergence & Wind Anomaly

Week 2: Mar 16-22, 2022

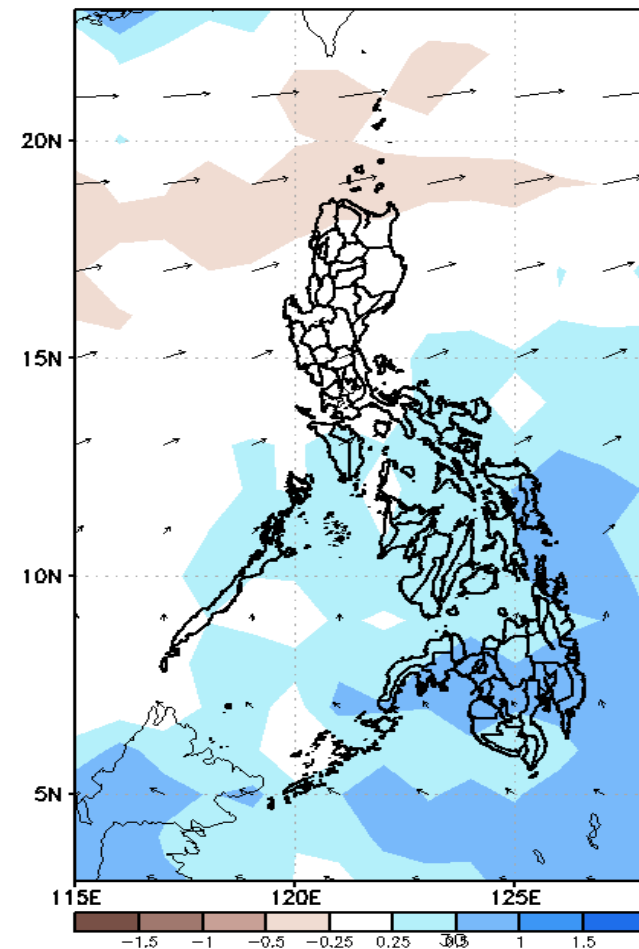
GEFS Week-2 850-hPa Divergence and Wind Anom
Valid: 20220316 - 20220322



GEFS Week-2 700-hPa Divergence and Wind Anom
Valid: 20220316 - 20220322



GEFS week-2 200-hPa Divergence and Wind Anom
Valid: 20220316 - 20220322

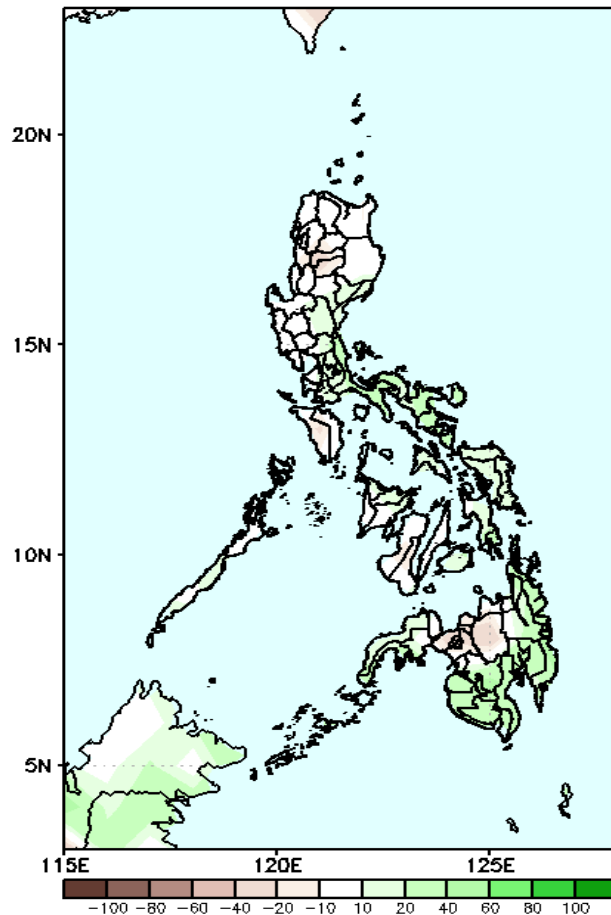


Upper and low level Divergence suggest a likelihood of light to moderate precipitation in some parts of Southern Luzon and most parts of Visayas and Mindanao. Easterlies affecting most parts of the country during the forecast period.

Precipitation Anomaly and Exceedance Probability > 25/50 mm

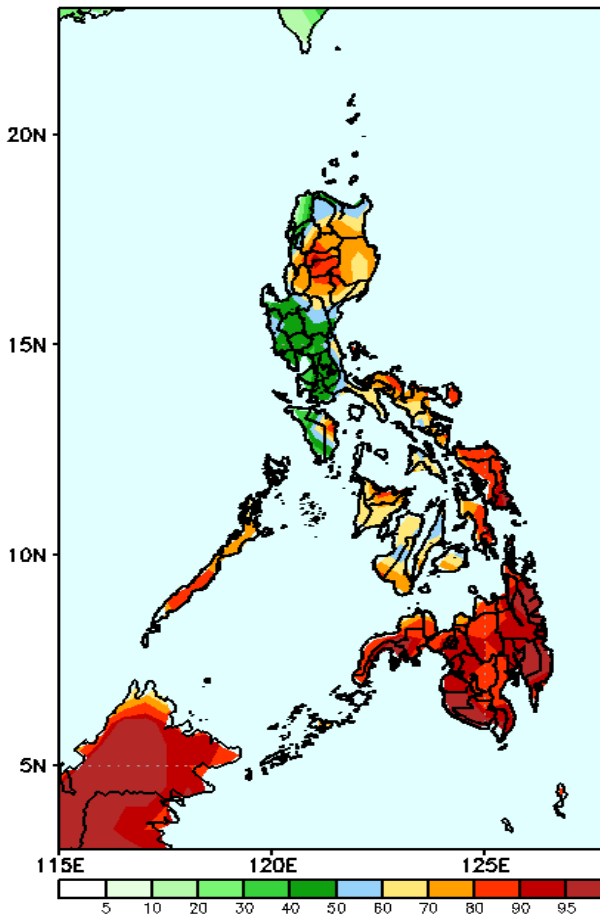
Week 2: Mar 16-22, 2022

GEFS Week-2 Precip Anomaly
Valid: 20220316 - 20220322



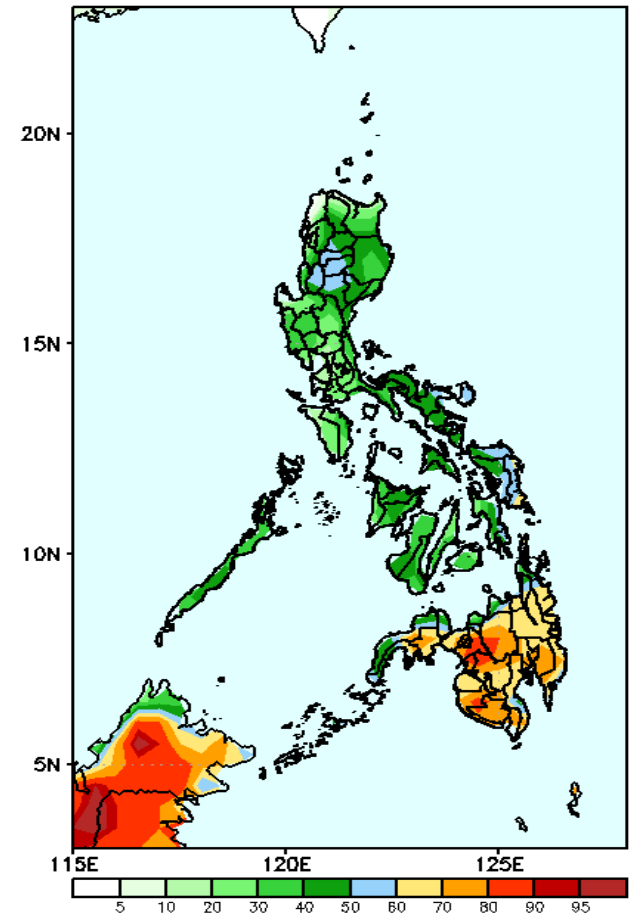
20-70mm Increase of rainfall is expected in CALABARZON, Bicol Region and most parts of Mindanao while 20-30mm rainfall deficit in Bukidnon during the forecast period.

GEFS Week-2 Exceedance Prob. > 25mm
Valid: 20220316 - 20220322



High probability of rainfall to exceed 25mm in northern half of Luzon, Or. Mindoro, Palawan and most parts of Visayas & Mindanao while less likely for the rest of the country during the forecast period.

GEFS Week-2 Exceedance Prob. > 50mm
Valid: 20220316 - 20220322

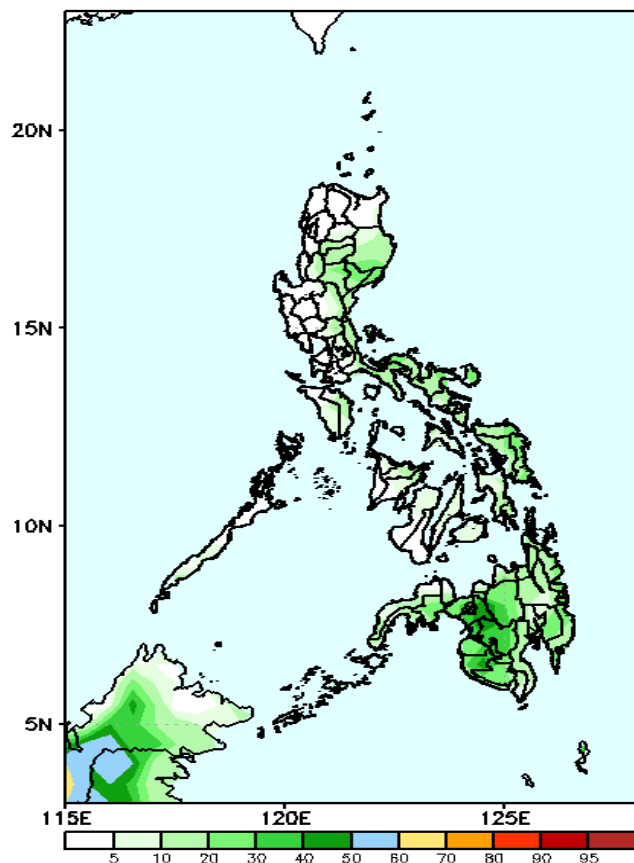


60-95% probability of rainfall to exceed 50mm in most parts of Mindanao while less likely for the rest of the country during the forecast period

Exceedance Probability > 100/150/200 mm

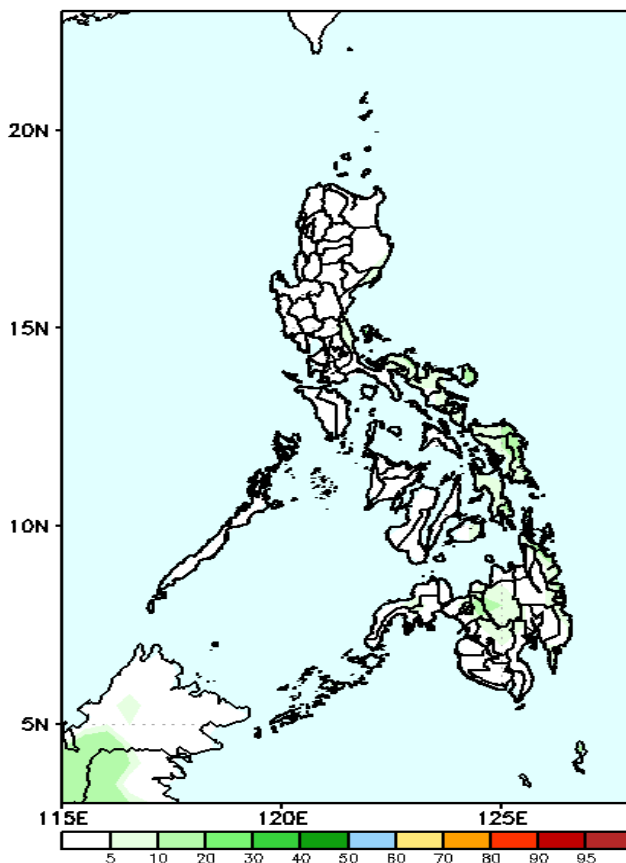
Week 2: Mar 16-22, 2022

GEFS Week-2 Exceedance Prob. > 100mm
Valid: 20220316 - 20220322



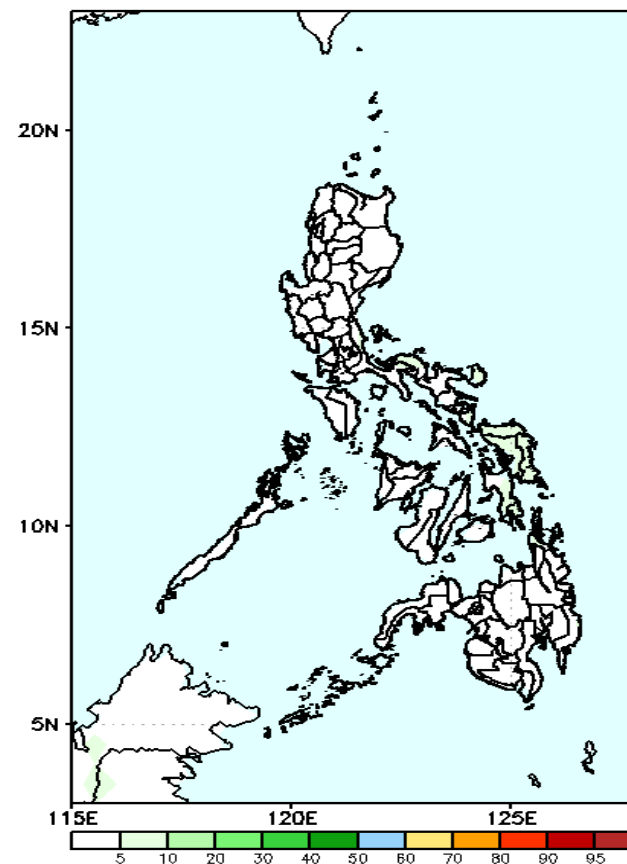
Low probability of rainfall to exceed 100mm in most parts of the country during the forecast period.

GEFS Week-2 Exceedance Prob. > 150mm
Valid: 20220316 - 20220322



Low probability of rainfall to exceed 150mm in most parts of the country during the forecast period.

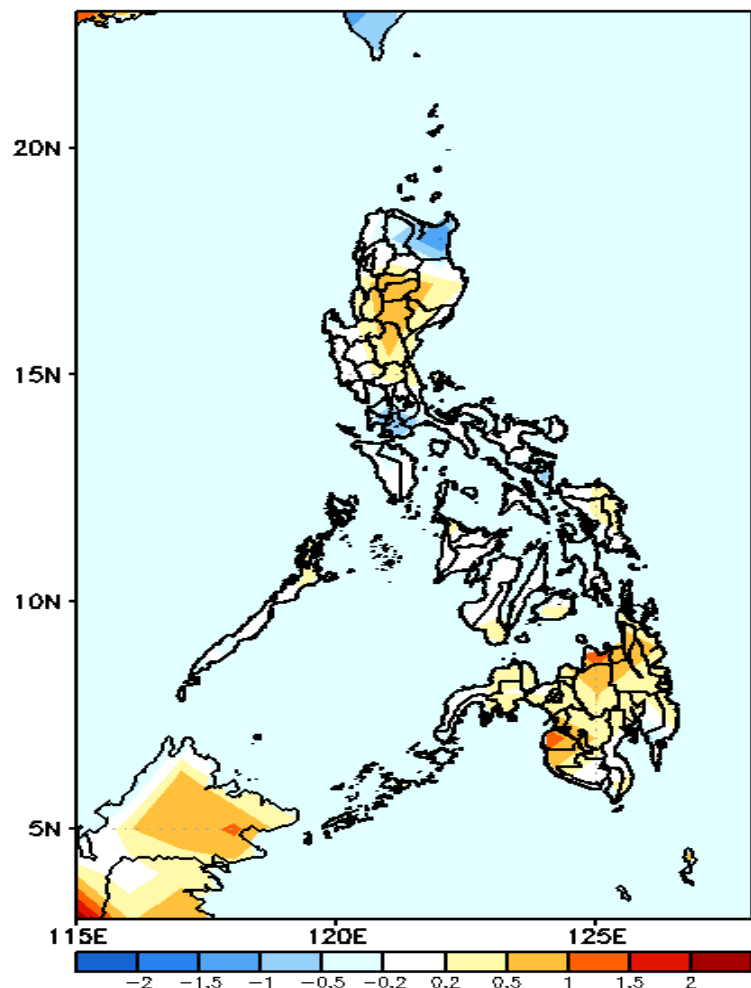
GEFS Week-2 Exceedance Prob. > 200mm
Valid: 20220316 - 20220322



Low probability of rainfall to exceed 200mm in most parts of the country during the forecast period.

GEFS Week-1 & 2 Forecasts: T2m Anomaly

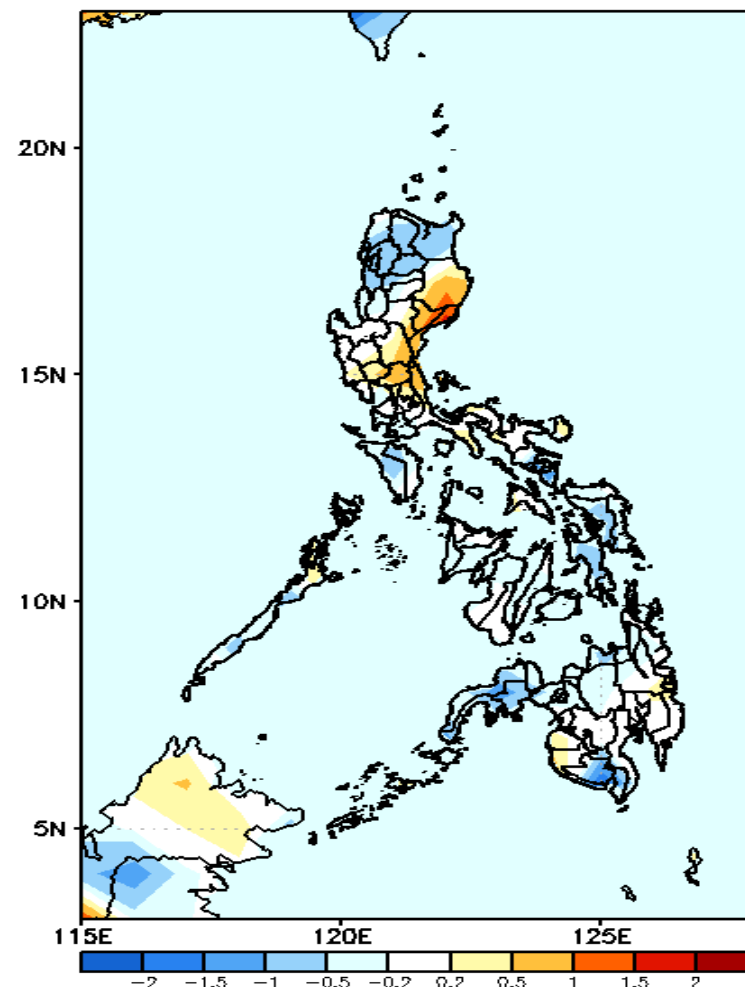
GEFS Week-1 T2m Anomaly
Valid: 20220309 — 20220315



2m Temperature Week 1: Mar 09-15, 2022

Slightly warmer to warmer than average surface air temperature will likely experience in most parts of the country except in Cagayan where cooler than average temperature is expected during the forecast period.

GEFS Week-2 T2m Anomaly
Valid: 20220316 — 20220322



2m Temperature Week 2: Mar 16-22, 2022

Average to slightly cooler than average surface air temperature will likely experience in most parts of the country except in most parts of eastern Luzon where slightly warmer to warmer temperature is expected during the forecast period.