



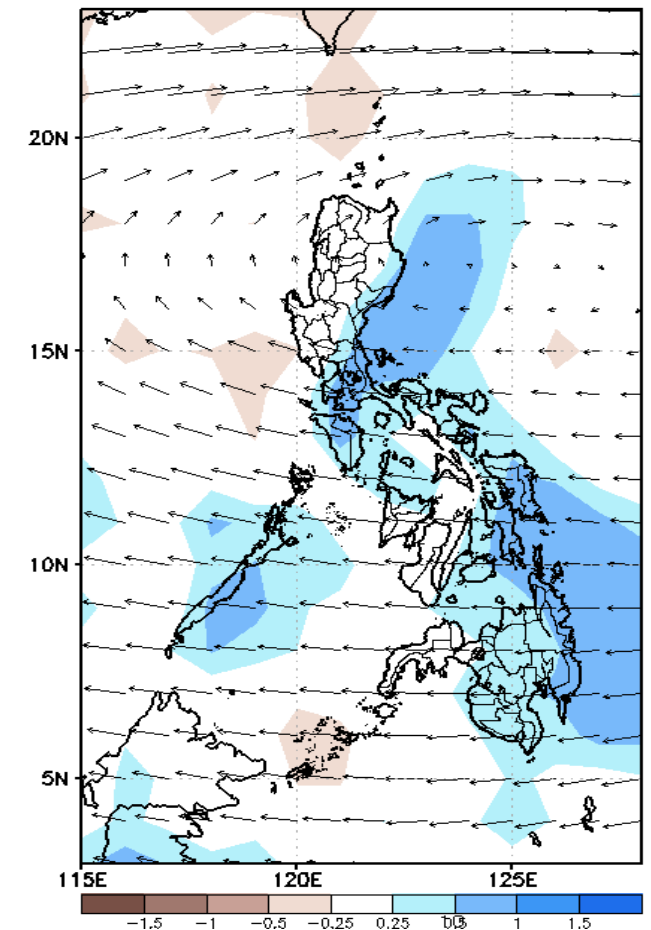
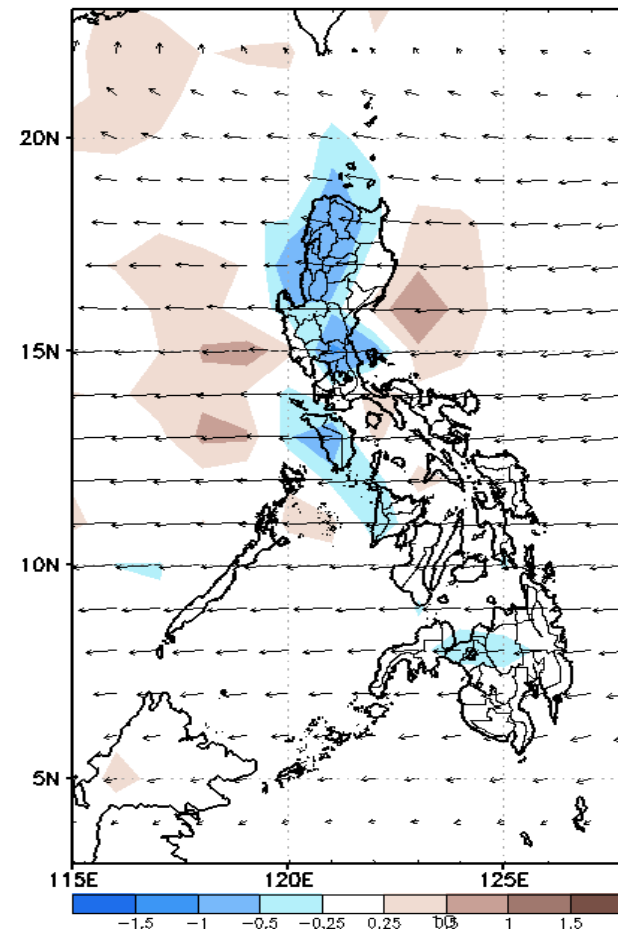
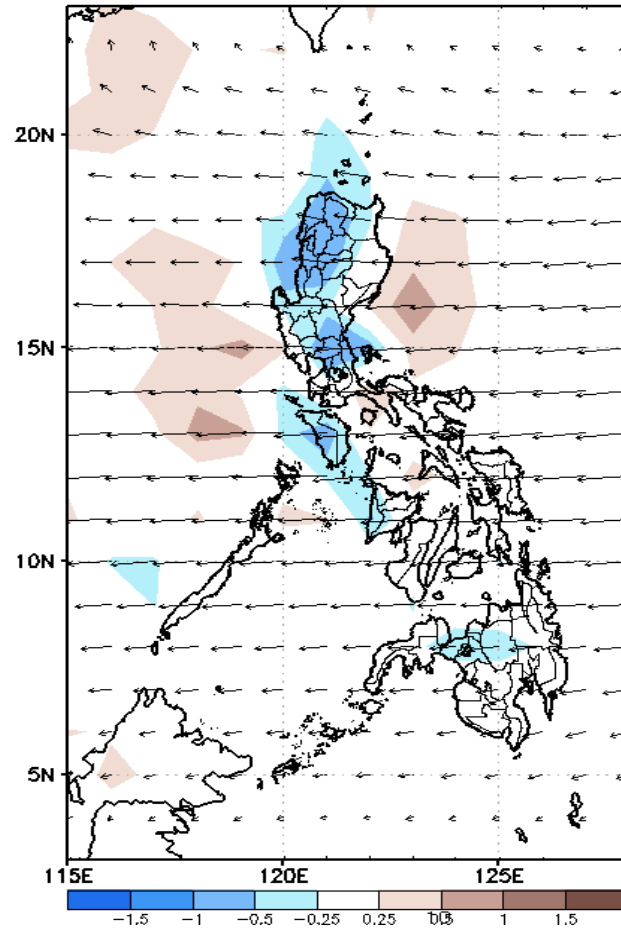
# Week 1 & Week 2 Forecast for the Philippines using GEFS Model



# GEFS Week-1 Forecasts: Wind Anomaly Forecast

Week 1: Nov 09-15, 2022

GEFS Week-1 850-hPa Divergence and Wind Anom  
Valid: 20221109 - 20221115

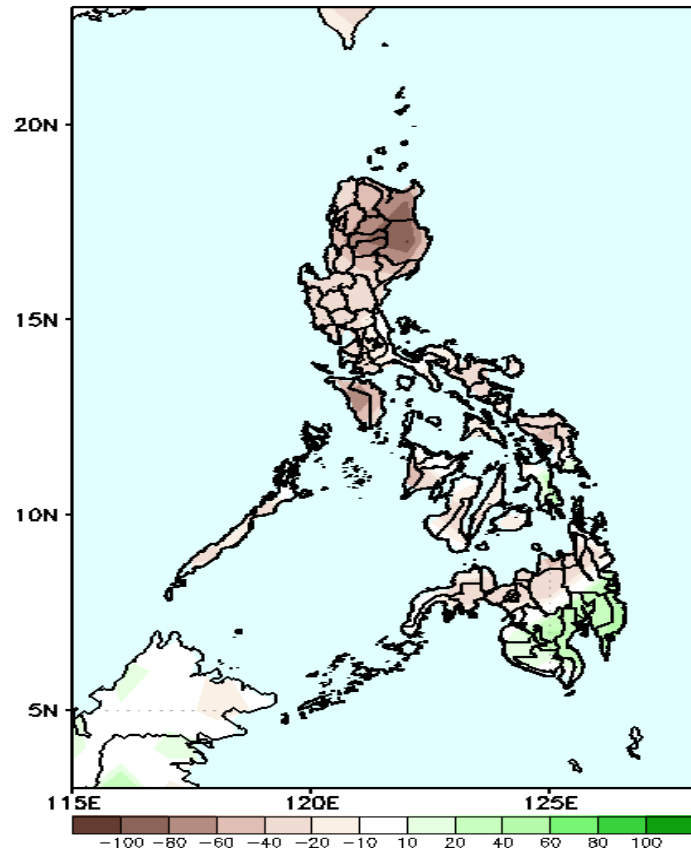


Easterlies will likely affect most parts of the country during the forecast period.

# Precipitation Anomaly and Exceedance Probability > 25/50 mm

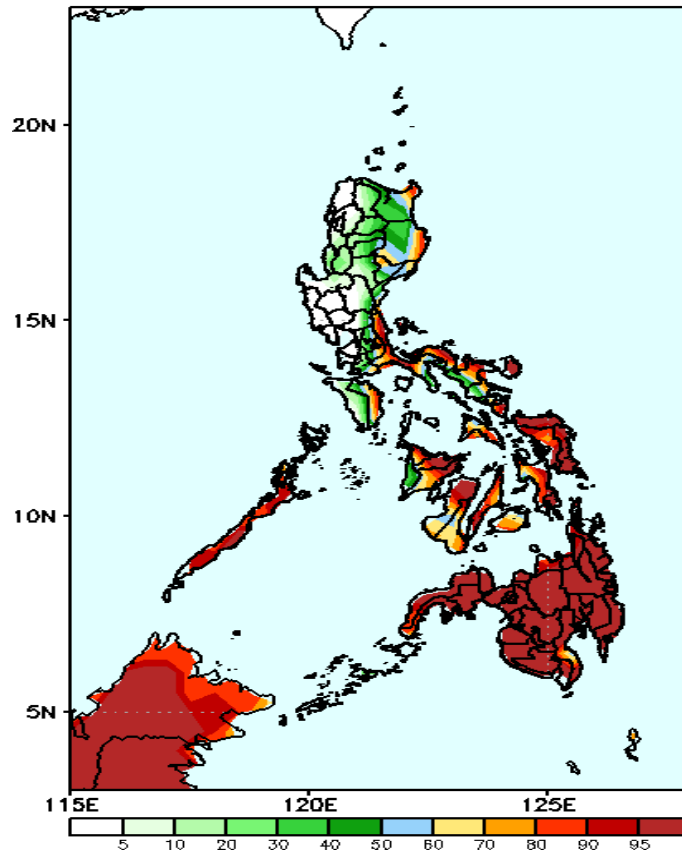
Week 1: Nov 09-15, 2022

GEFS Week-1 Precip Anomaly  
Valid: 20221109 - 20221115



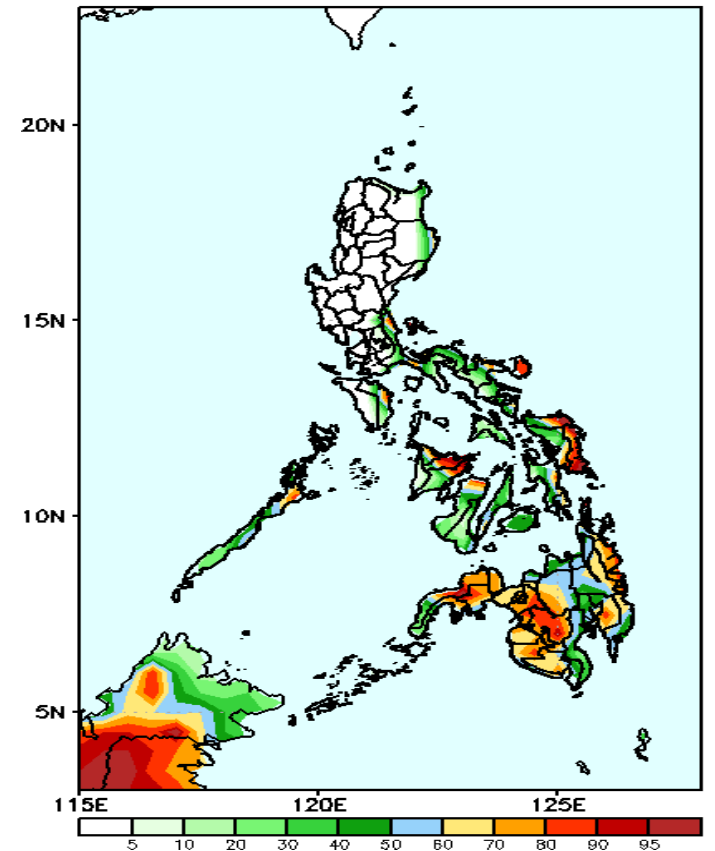
Rainfall deficit of 40-100mm is expected in most parts of the country except in southern Mindanao where increase of rainfall of 20-60mm is most likely during the forecast period.

GEFS Week-1 Exceedance Prob. > 25mm  
Valid: 20221109 - 20221115



High probability of rainfall to exceed 25mm in eastern parts of Cagayan & Isabela, most parts of Southern Luzon, Visayas and Mindanao while less likely for the rest Luzon during the forecast period.

GEFS Week-1 Exceedance Prob. > 50mm  
Valid: 20221109 - 20221115

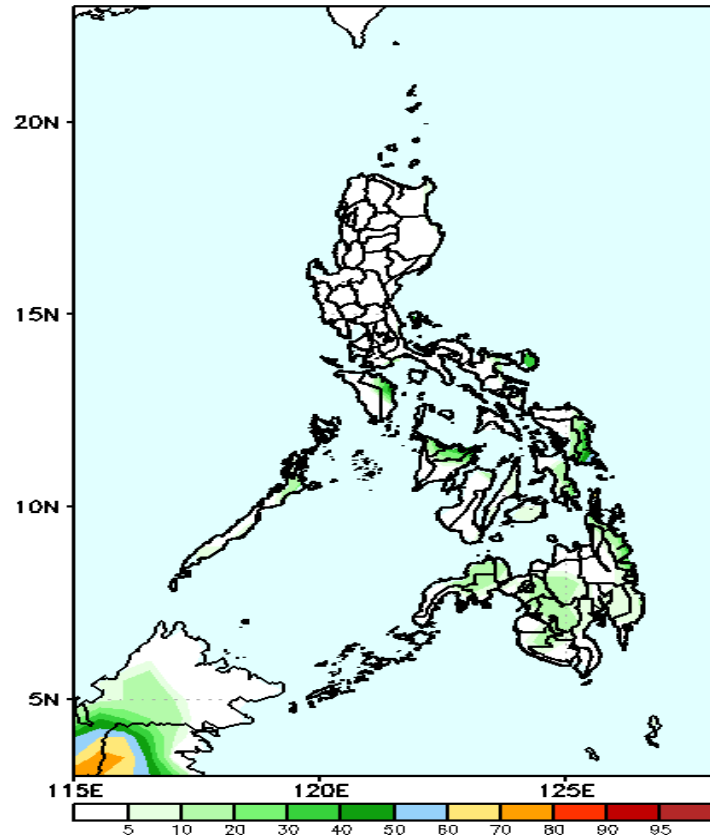


High probability of rainfall to exceed 50mm in Catanduanes, Northern and Eastern Samar, eastern parts of Panay Island & Negros Occ. and most parts of Mindanao while less likely for the rest of the country during the forecast period.

# Exceedance Probability > 100/150/200 mm

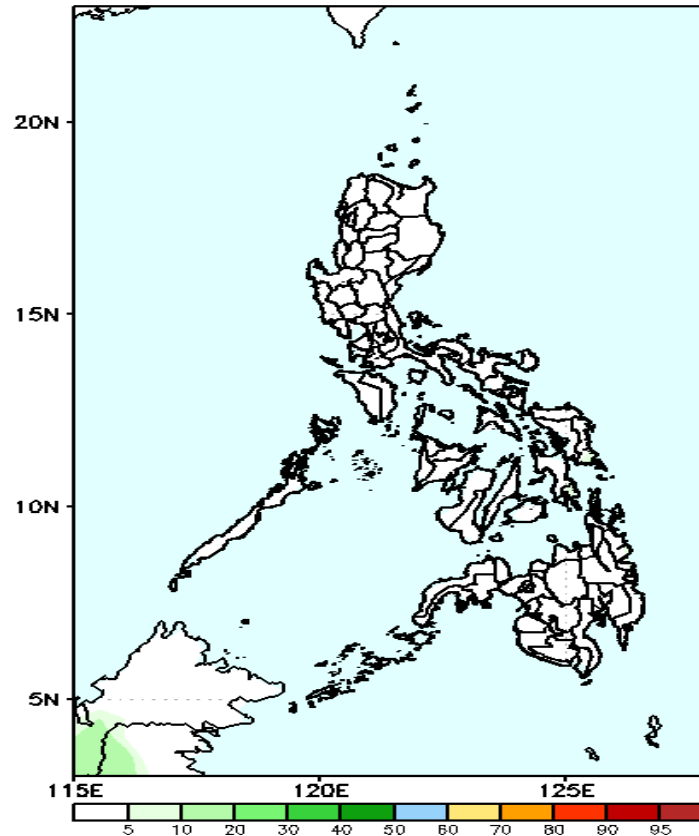
Week 1: Nov 09-15, 2022

GEFS Week-1 Exceedance Prob. > 100mm  
Valid: 20221109 – 20221115



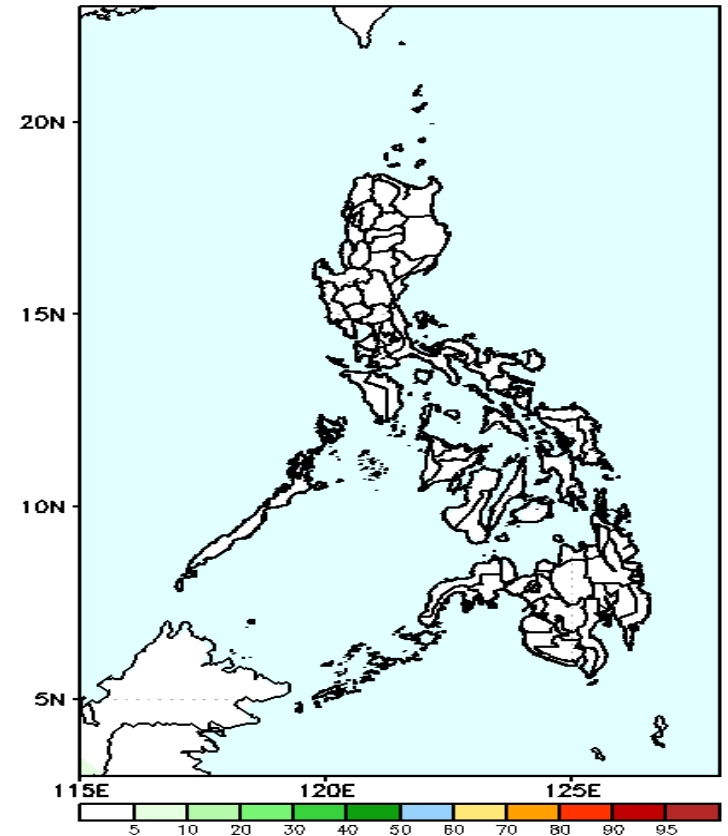
Low probability of rainfall to exceed 100mm in most parts of the country during the forecast period.

GEFS Week-1 Exceedance Prob. > 150mm  
Valid: 20221109 – 20221115



Low probability of rainfall to exceed 150mm in most parts of the country during the forecast period.

GEFS Week-1 Exceedance Prob. > 200mm  
Valid: 20221109 – 20221115

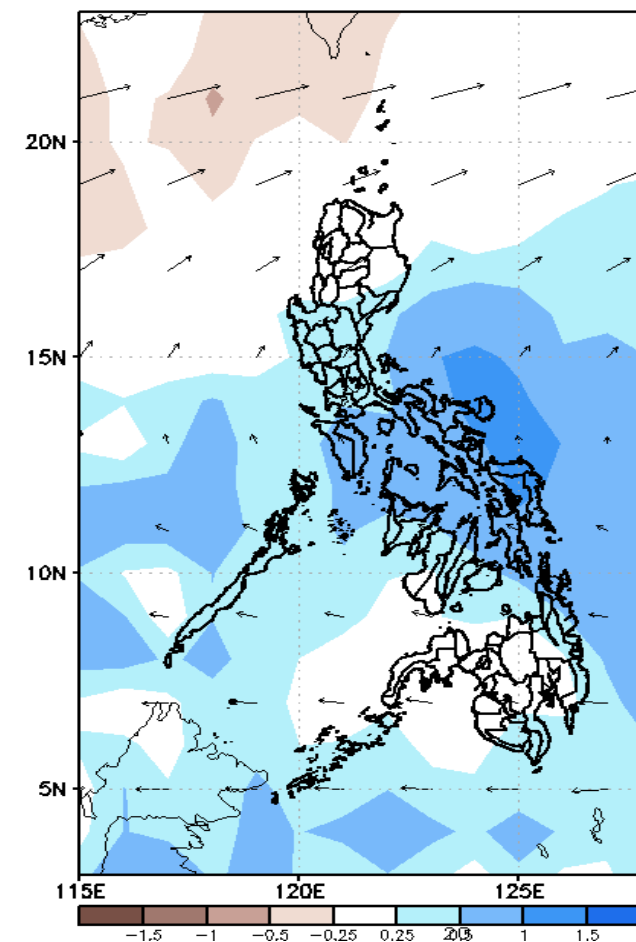
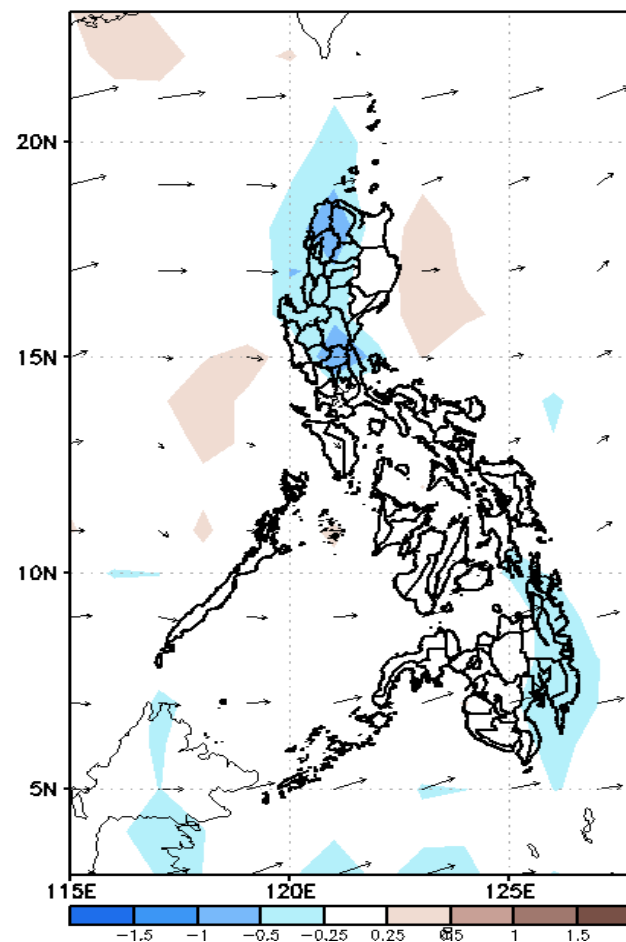
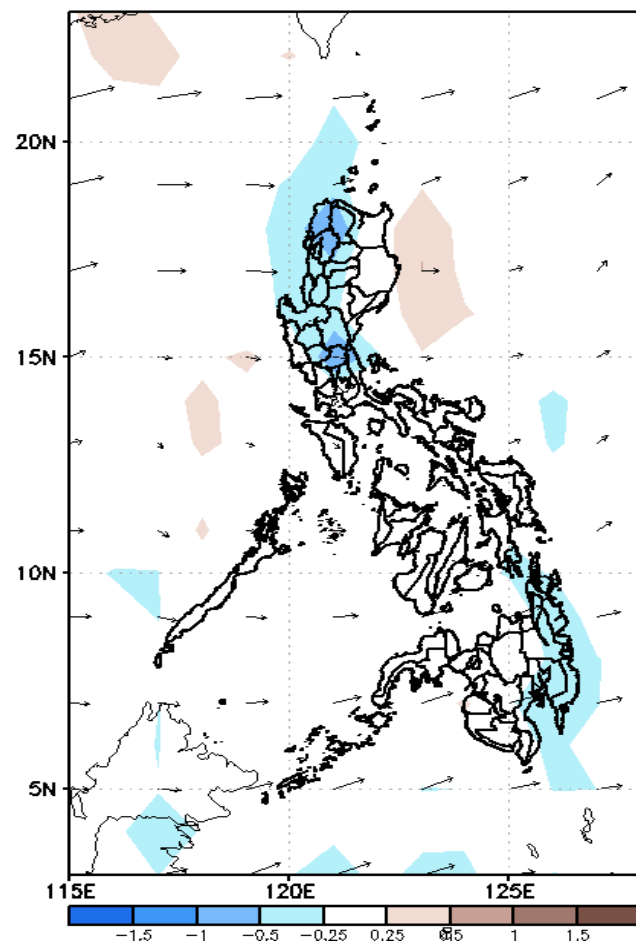


Low probability of rainfall to exceed 200mm in most parts of the country during the forecast period.

# GEFS Week-2 Forecasts: Wind Anomaly Forecast

Week 2: Nov 14-20, 2022

GEFS Week-2 850-hPa Divergence and Wind Anom  
Valid: 20221116 - 20221122

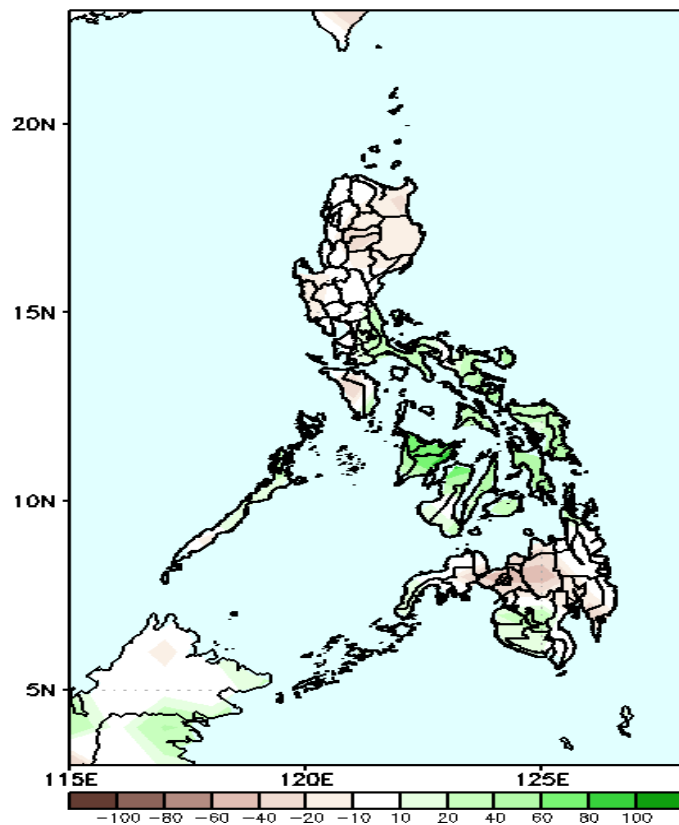


Weak easterlies will likely affect most parts of the country during the forecast period.

# Precipitation Anomaly and Exceedance Probability > 25/50 mm

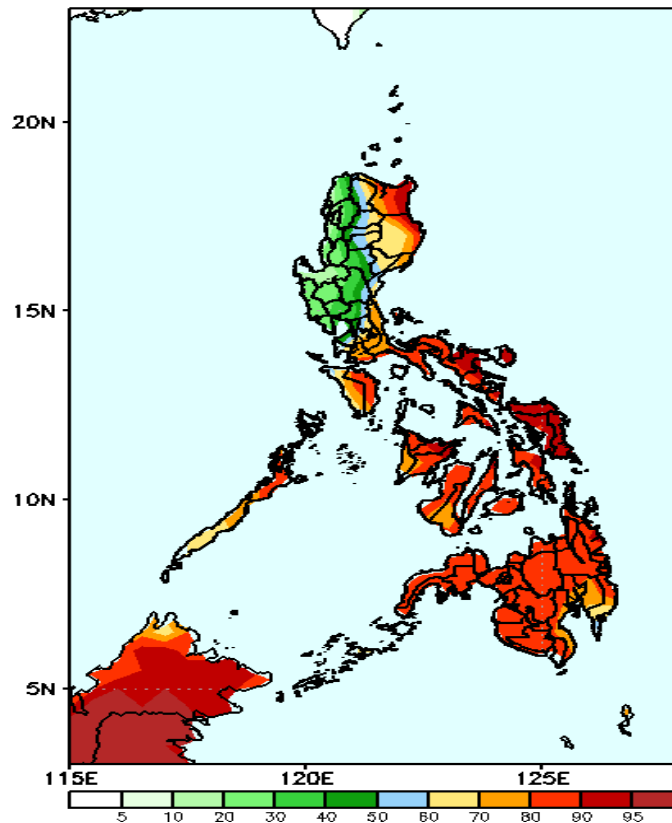
Week 2: Nov 16-22, 2022

GEFS Week-2 Precip Anomaly  
Valid: 20221116 - 20221122



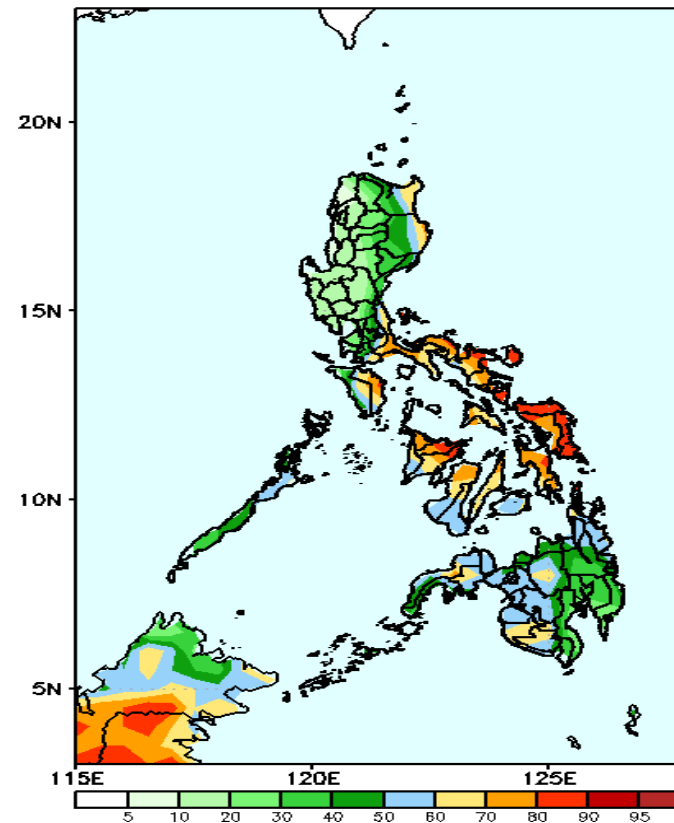
Increase of rainfall of 40-100mm is expected in some areas in Southern Luzon, most parts of Visayas & southwestern Mindanao while rainfall deficit of 20-40mm is most likely in Luzon and northern Mindanao during the forecast period.

GEFS Week-2 Exceedance Prob. > 25mm  
Valid: 20221116 - 20221122



High probability of rainfall to exceed 25mm in most parts of the country except in northwestern & Central Luzon during the forecast period.

GEFS Week-2 Exceedance Prob. > 50mm  
Valid: 20221116 - 20221122



60-95% probability of rainfall to exceed 50mm in eastern parts of Cagayan & Isabela, most parts of Southern Luzon, Visayas and western Mindanao during the forecast period.

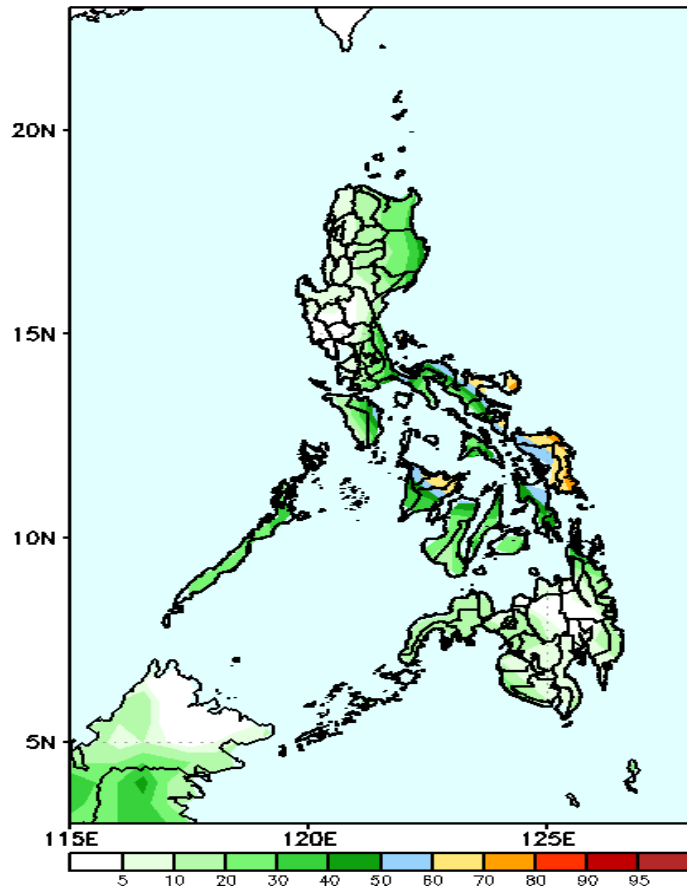




# Exceedance Probability > 100/150/200 mm

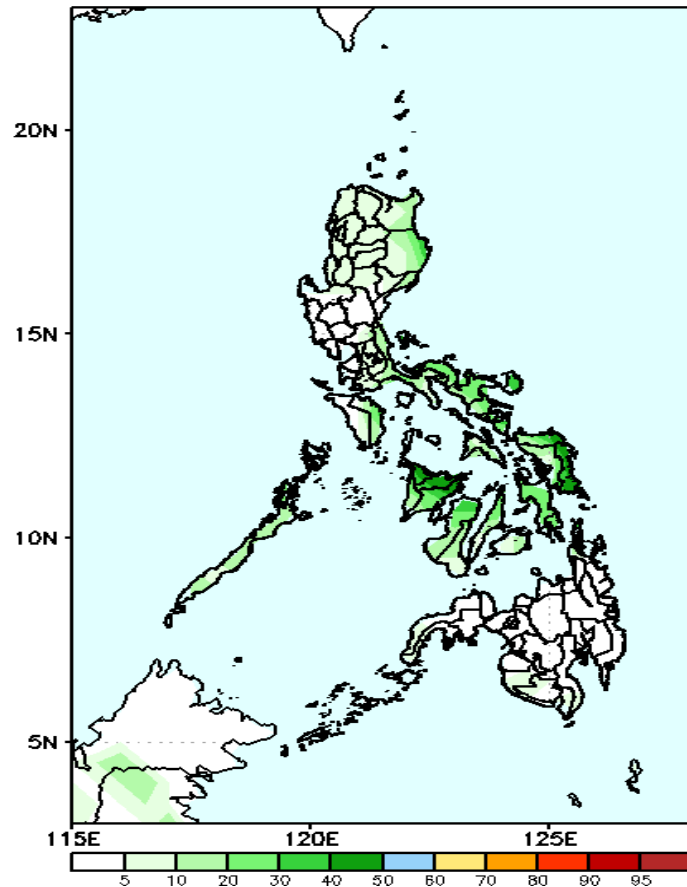
Week 2: Nov 16-22, 2022

GEFS Week-2 Exceedance Prob. > 100mm  
Valid: 20221116 – 20221122



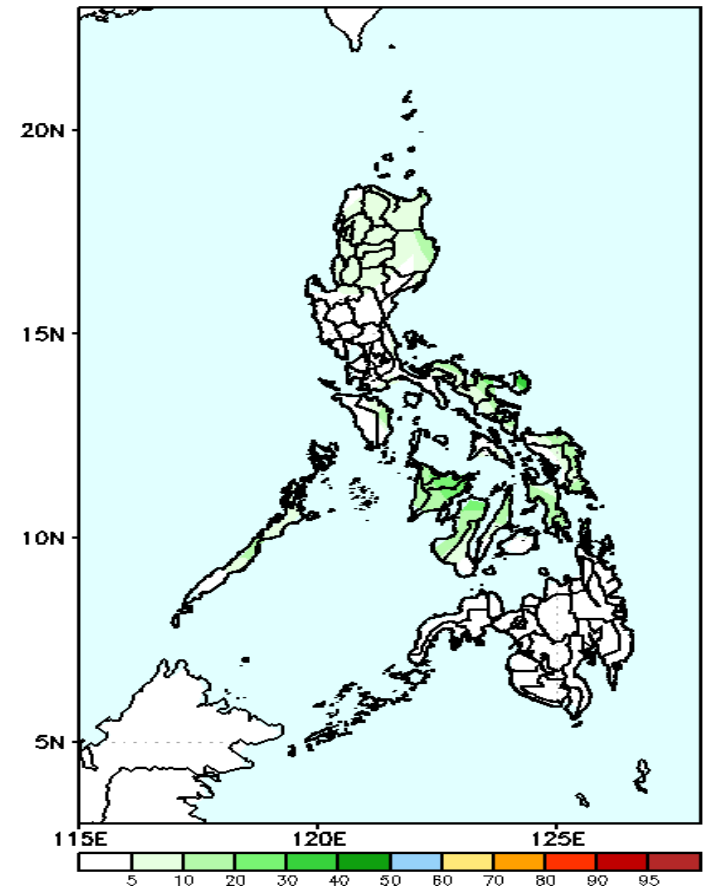
60-80% probability of rainfall to exceed 100mm in Bicol Region Aklan, Capiz and Samar provinces while less likely for the rest of the country during the forecast period.

GEFS Week-2 Exceedance Prob. > 150mm  
Valid: 20221116 – 20221122



Low probability of rainfall to exceed 150mm in most parts of the country during the forecast period.

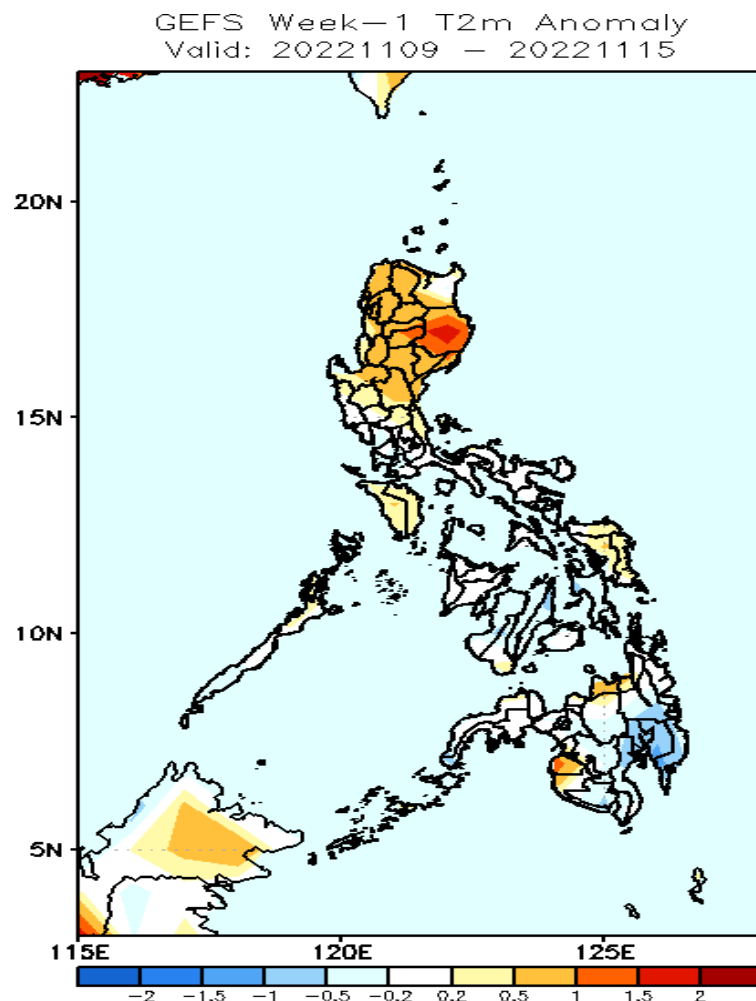
GEFS Week-2 Exceedance Prob. > 200mm  
Valid: 20221116 – 20221122



Low probability of rainfall to exceed 200mm in most parts of the country during the forecast period.

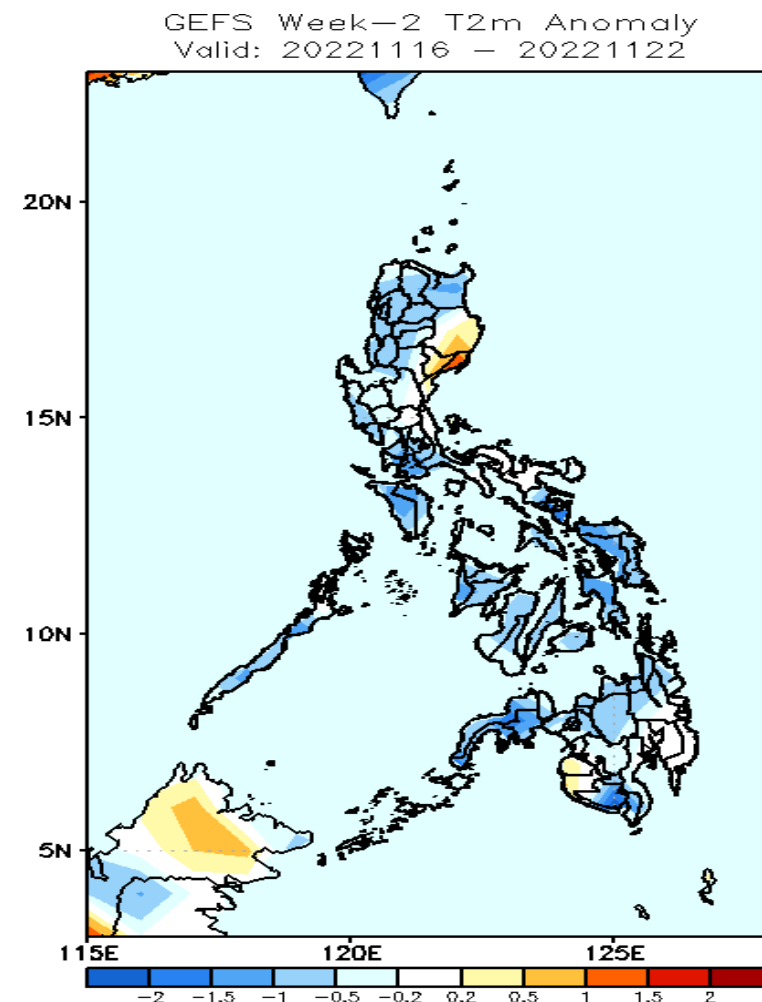


# GEFS Week-1 & 2 Forecasts: T2m Anomaly



## 2m Temperature Week 1: Nov 09-15, 2022

Slightly warmer to warmer than average surface air temperature will likely experience in most parts of Luzon, Samar provinces Misamis oriental and Maguindanao, slightly cooler in Davao Region and near average for the rest of the country during the forecast period.



## 2m Temperature Week 2: Nov 16-22, 2022

Near to cooler than average surface air temperature will likely experience in most parts of the country except in Isabela and Quirino where slightly warmer than average surface air temperature is expected during the forecast period.