



**USAID**  
FROM THE AMERICAN PEOPLE



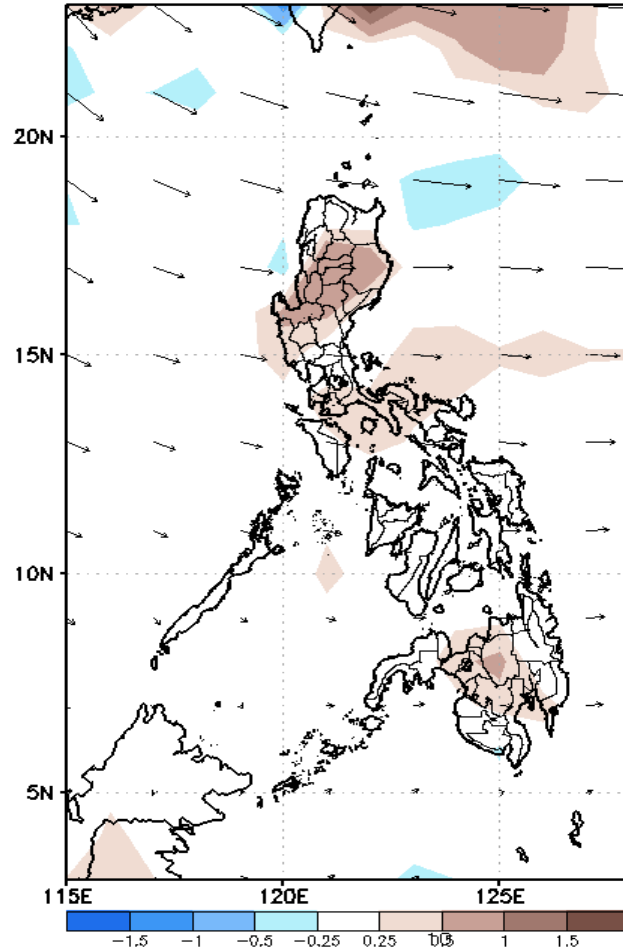
# Week 1 & Week 2 Forecast for the Philippines using GEFS Model



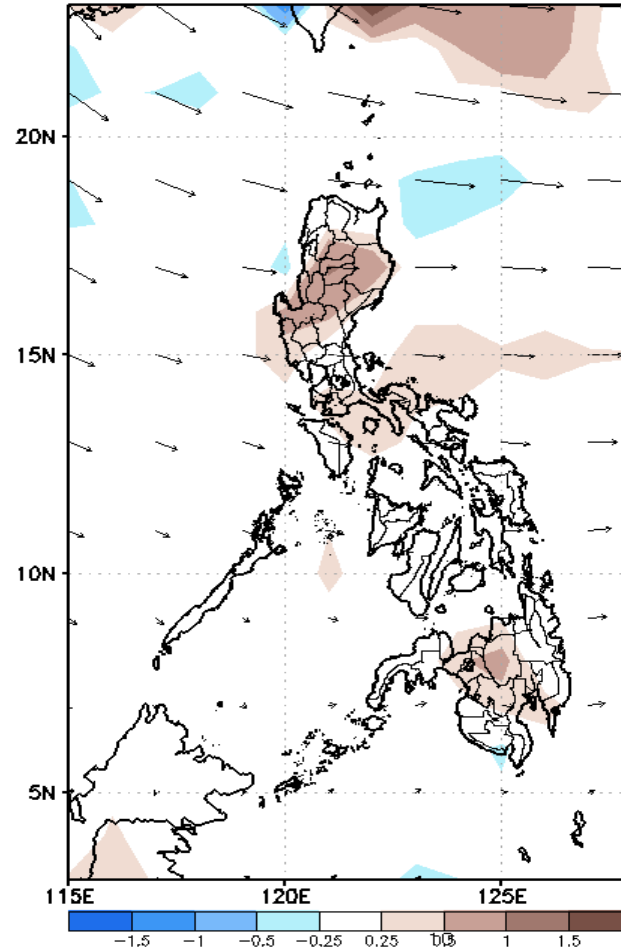
# GEFS Week-1 Forecasts: Divergence & Wind Anomaly

**Week 1: April 09- April 15, 2020**

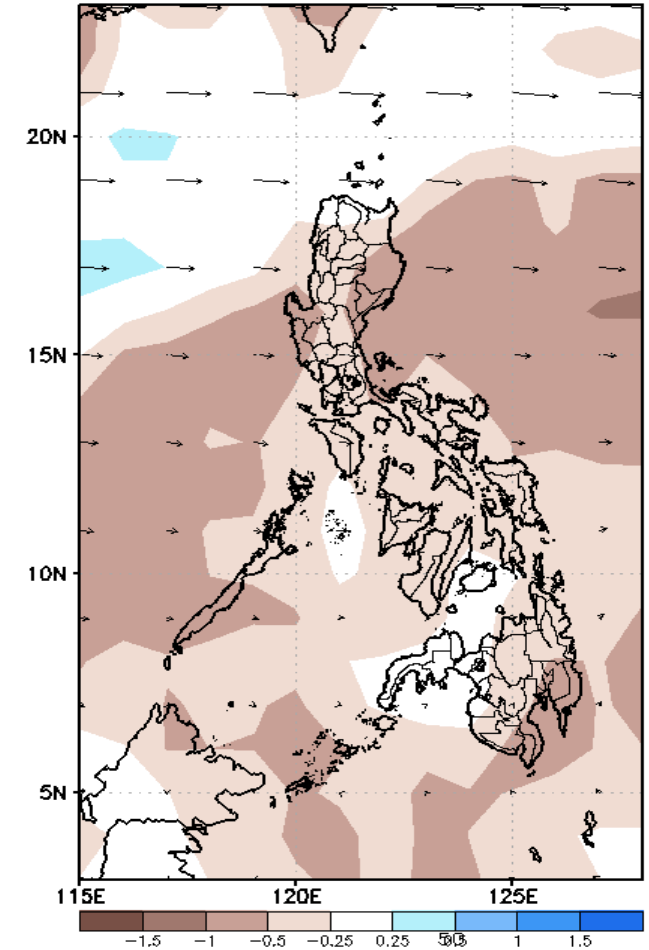
GEFS Week-1 850-hPa Divergence and Wind Anom  
Valid: 20200409 - 20200415



GEFS Week-1 700-hPa Divergence and Wind Anom  
Valid: 20200409 - 20200415



GEFS Week-1 200-hPa Divergence and Wind Anom  
Valid: 20200409 - 20200415

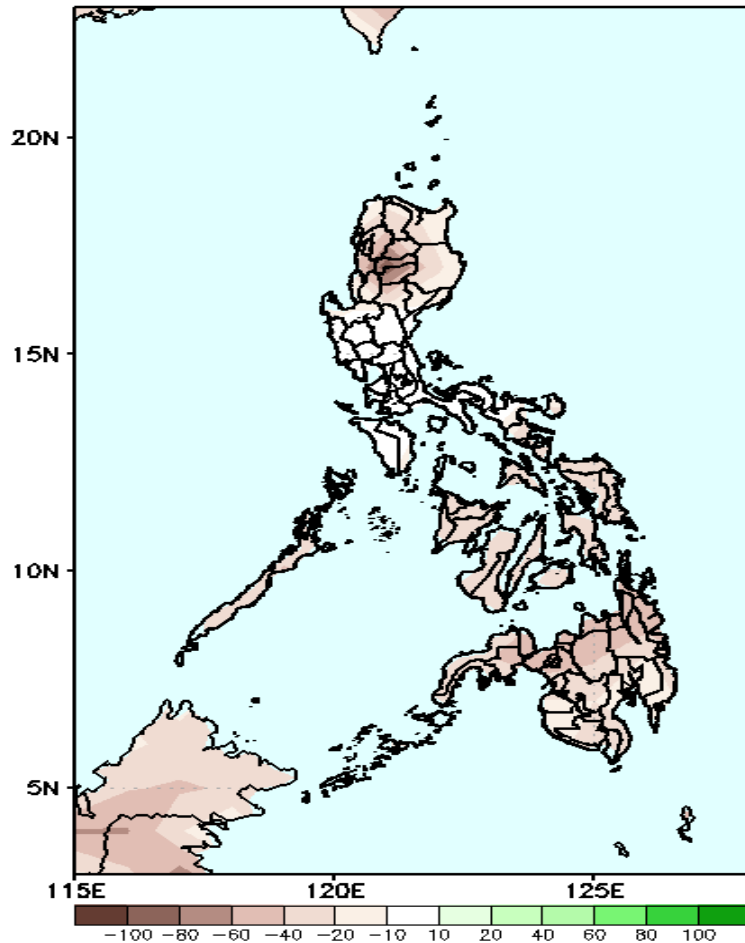


Low level (850 hPa) Divergence show less likelihood of precipitation in most parts of the country. Northeasterlies affecting extreme northern Luzon while easterlies affecting most parts of the country during the forecast period.

# Precipitation Anomaly and Exceedance Probability > 25/50 mm

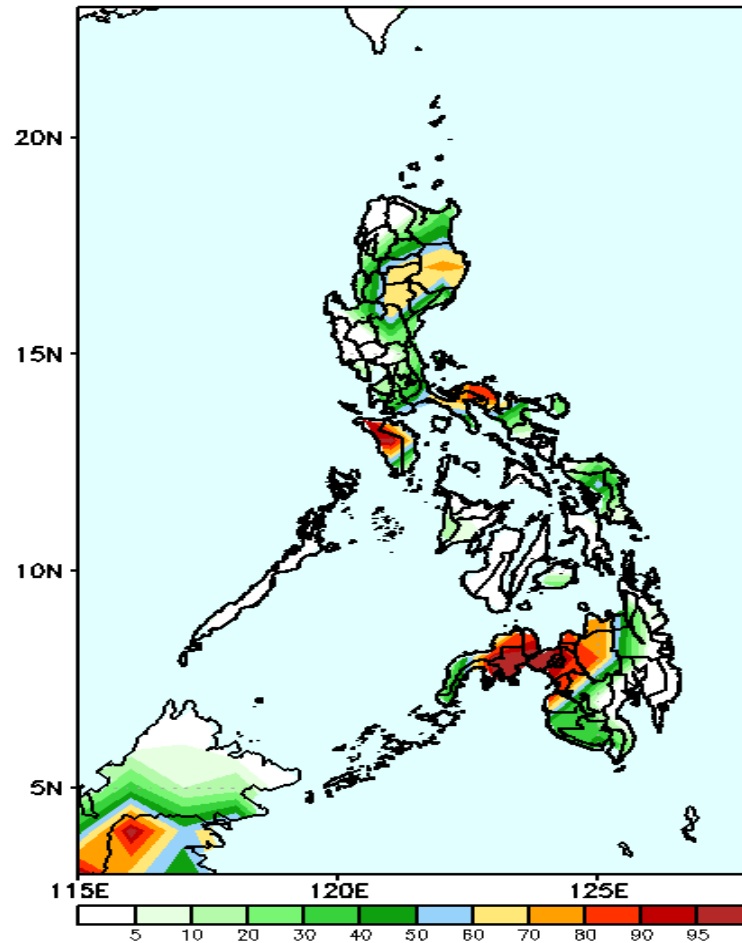
**Week 1: April 09- April 15, 2020**

GEFS Week-1 Precip Anomaly  
Valid: 20200409 - 20200415



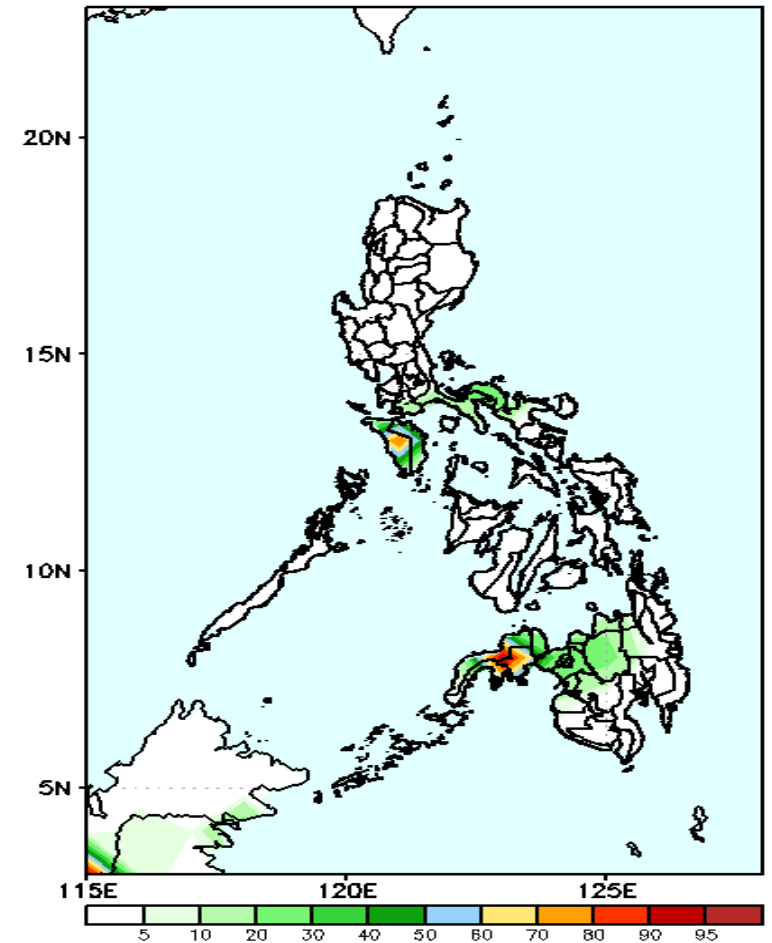
Rainfall deficit of up to 50 mm is most likely in most parts of the country during the forecast period.

GEFS Week-1 Exceedance Prob. > 25mm  
Valid: 20200409 - 20200415



High probability of rainfall to exceed 25mm in eastern Luzon, Mindoro, Camarines Norte and northwestern part of Mindanao while less likely for the rest of the country during the forecast period.

GEFS Week-1 Exceedance Prob. > 50mm  
Valid: 20200409 - 20200415

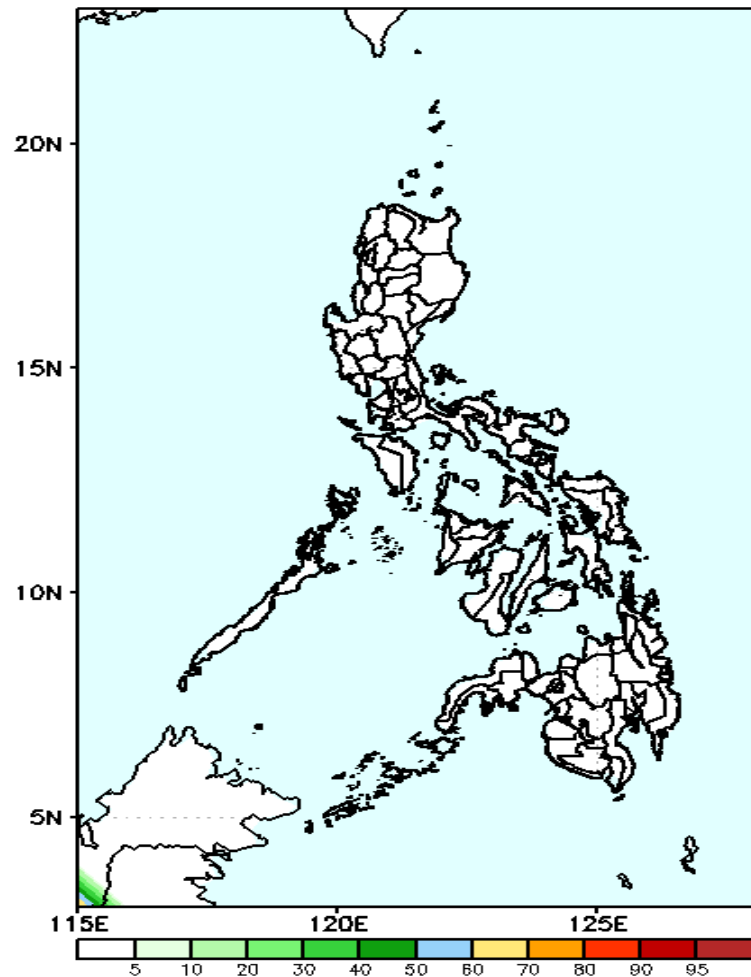


Less probability of rainfall to exceed 100mm in most parts of the country except in Mindoro and Zamboanga Peninsula where there is 60-90% chance during the forecast period.

# Exceedance Probability > 100/150/200 mm

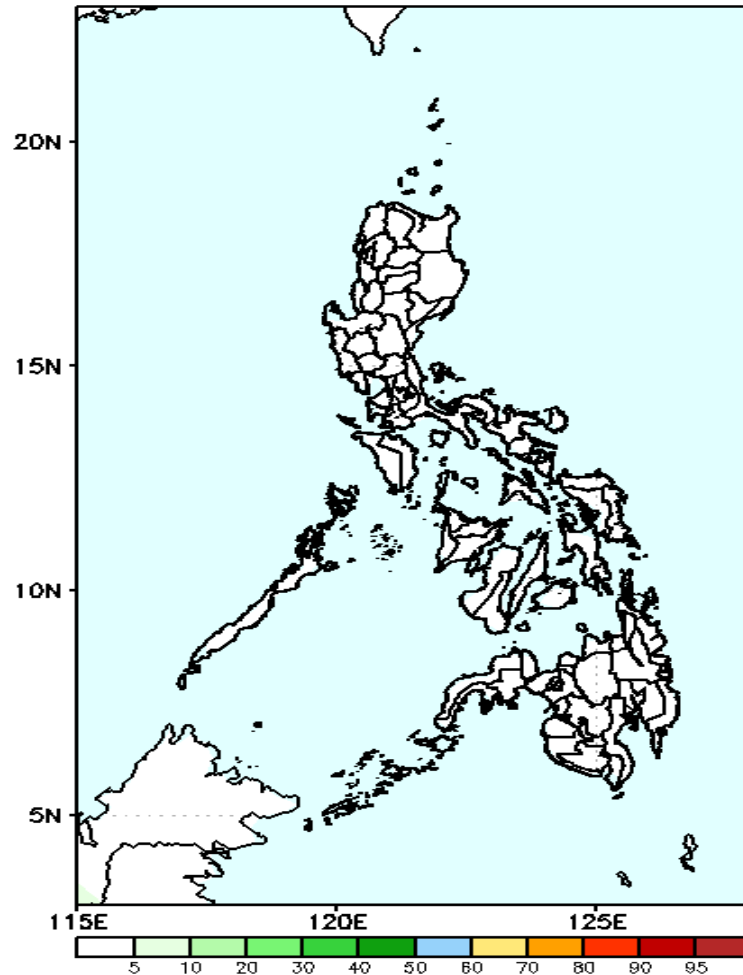
## Week 1: April 09- April 15, 2020

GEFS Week-1 Exceedance Prob. > 100mm  
Valid: 20200409 - 20200415



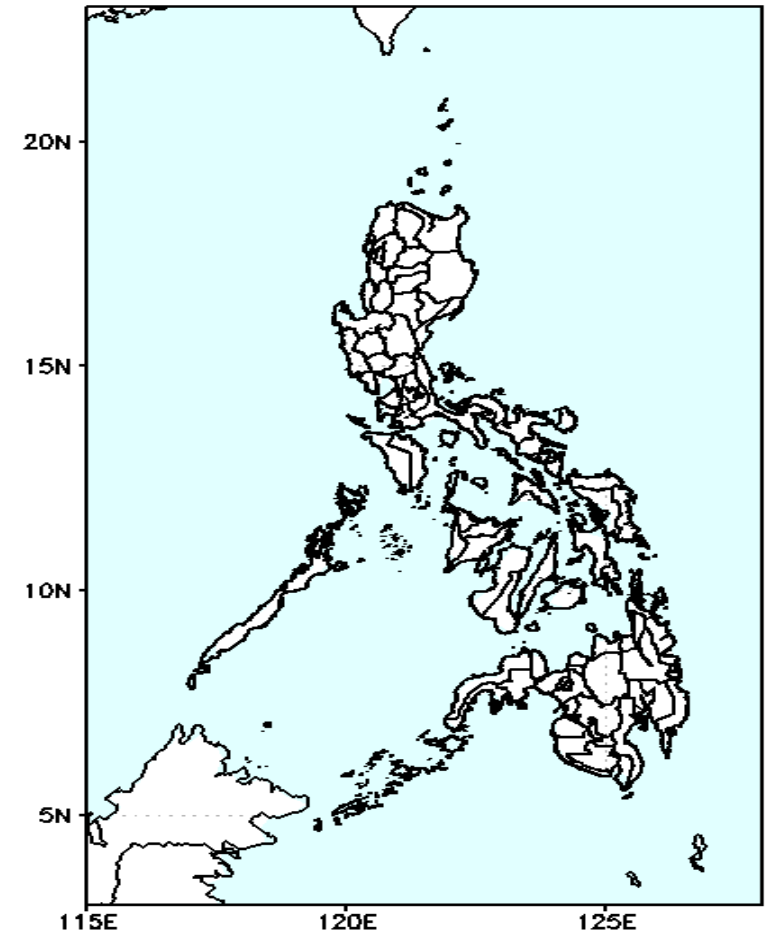
Less probability of rainfall to exceed 100 mm in most parts of the country during the forecast period.

GEFS Week-1 Exceedance Prob. > 150mm  
Valid: 20200409 - 20200415



Less probability of rainfall to exceed 150 mm in most parts of the country during the forecast period.

GEFS Week-1 Exceedance Prob. > 200mm  
Valid: 20200409 - 20200415

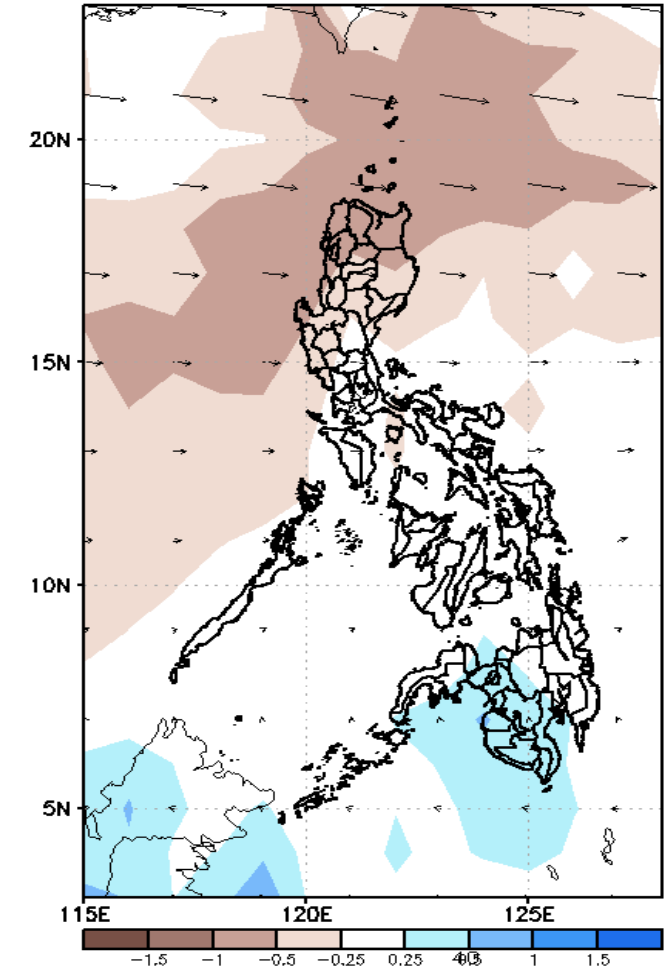
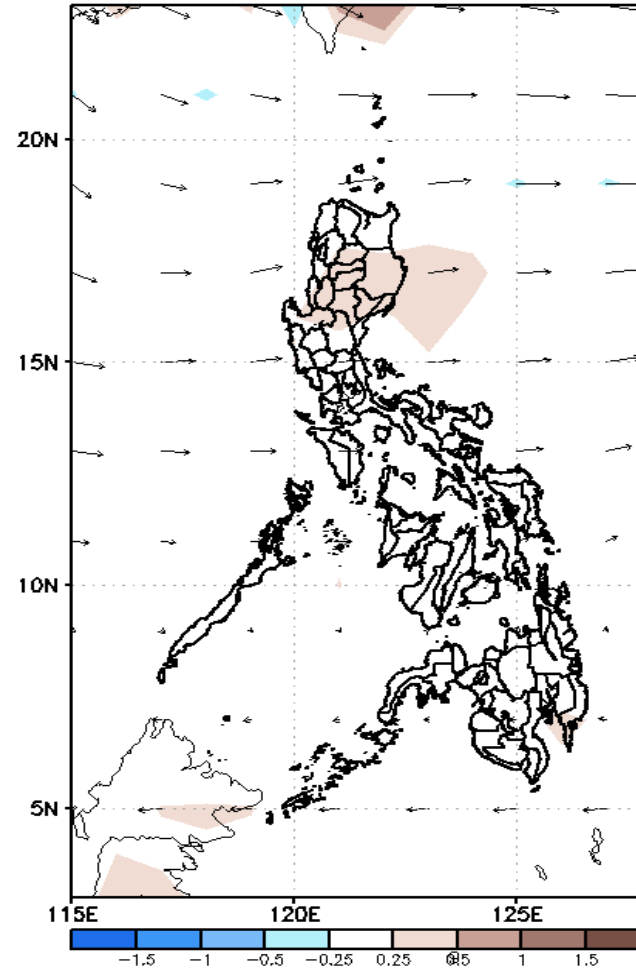
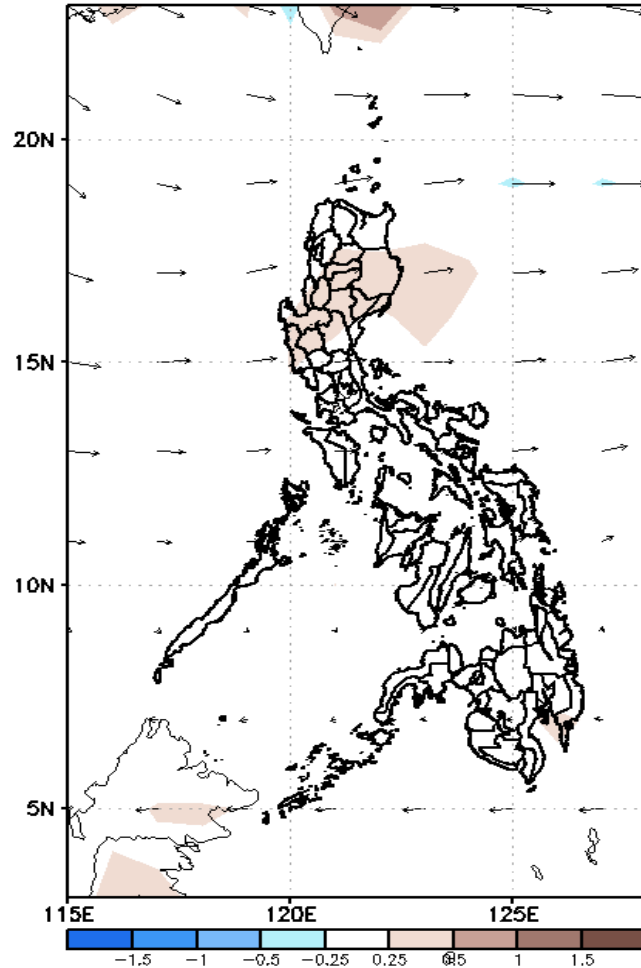


Less probability of rainfall to exceed 200 mm in most parts of the country during the forecast period.

# GEFS Week-2 Forecasts: Divergence & Wind Anomaly

**Week 2: April 16- April 22, 2020**

GEFS Week-2 850-hPa Divergence and Wind Anom GEFS Week-2 700-hPa Divergence and Wind Anom GEFS week-2 200-hPa Divergence and Wind Anom  
Valid: 20200416 - 20200422



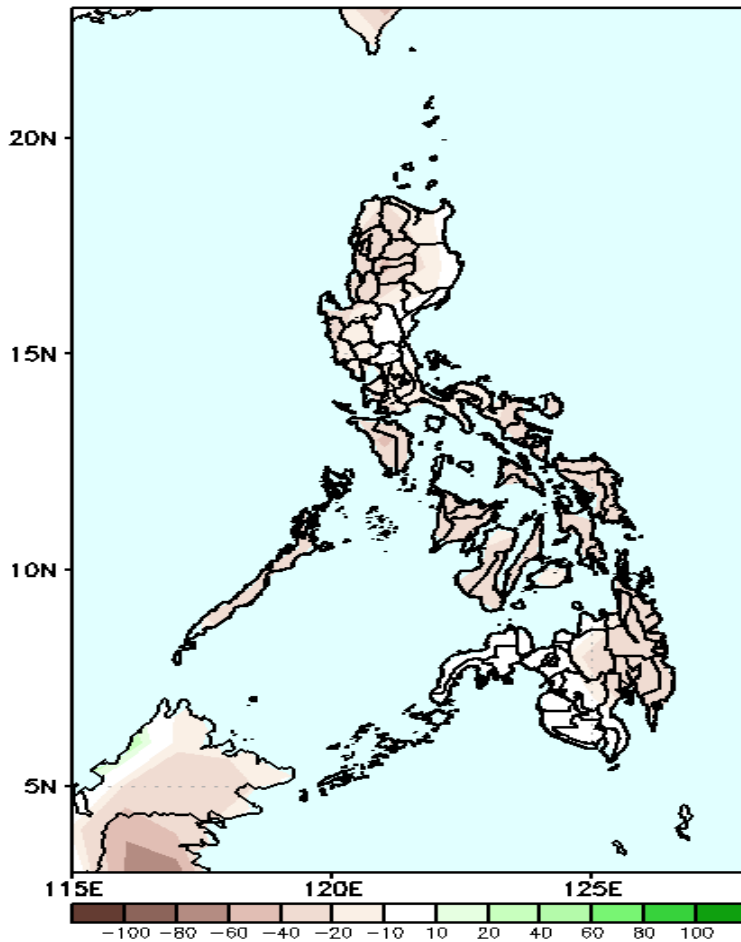
Low level (850 hPa) Divergence show likelihood of precipitation in northern and central Luzon, northern and western Mindanao and Zamboanga peninsula due to localized thunderstorm. Easterlies affecting most parts of the country during the forecast period.



# Precipitation Anomaly and Exceedance Probability > 25/50 mm

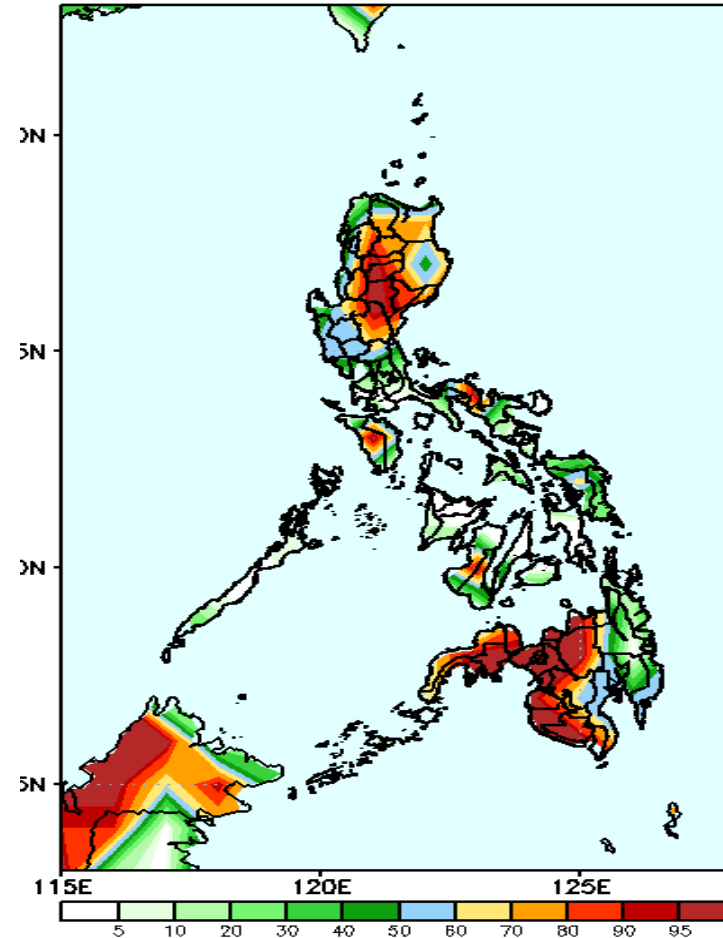
**Week 2: April 16- April 22, 2020**

GEFS Week-2 Precip Anomaly  
Valid: 20200416 - 20200422



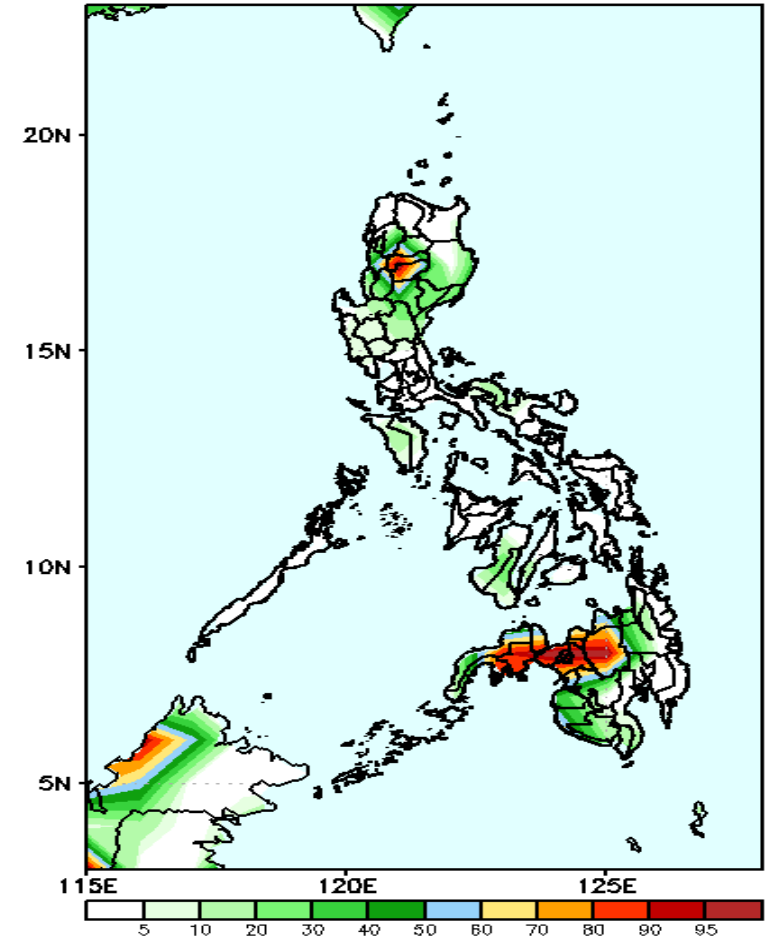
Rainfall deficit of 20-50mm is most likely in most parts of the country during the forecast period.

GEFS Week-2 Exceedance Prob. > 25mm  
Valid: 20200416 - 20200422



High probability of rainfall to exceed 25mm in most parts of Luzon and western and northern Mindanao while 40-60% probability for the rest of the country during the forecast period.

GEFS Week-2 Exceedance Prob. > 50mm  
Valid: 20200416 - 20200422



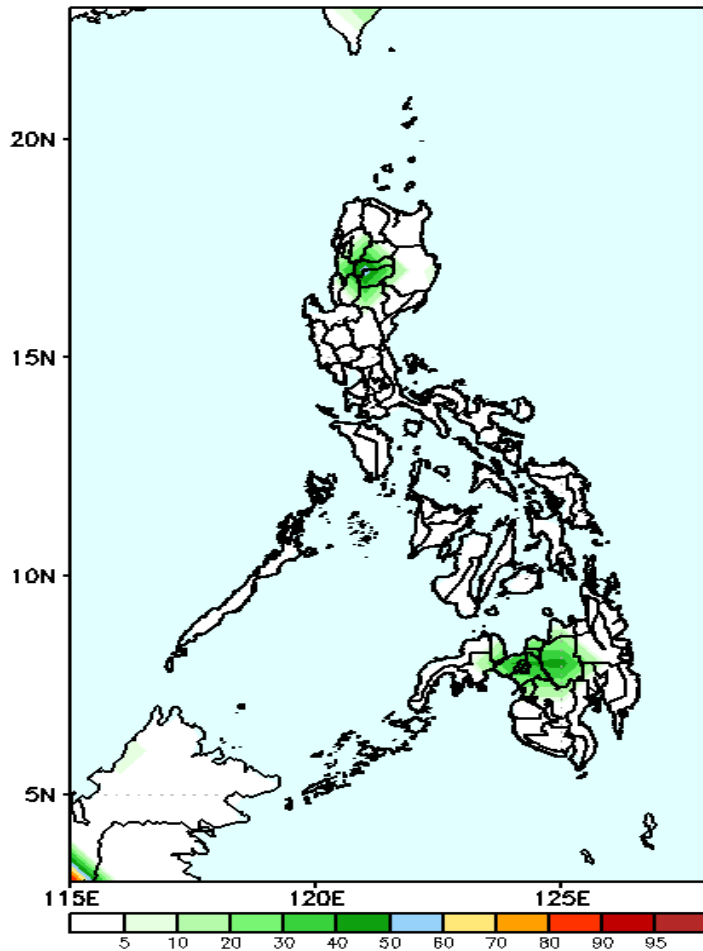
Less probability of rainfall to exceed 50mm in most parts of the country except in CAR, northern Mindanao and Zamboanga Peninsula where there is high probability during the forecast period.



# Exceedance Probability > 100/150/200 mm

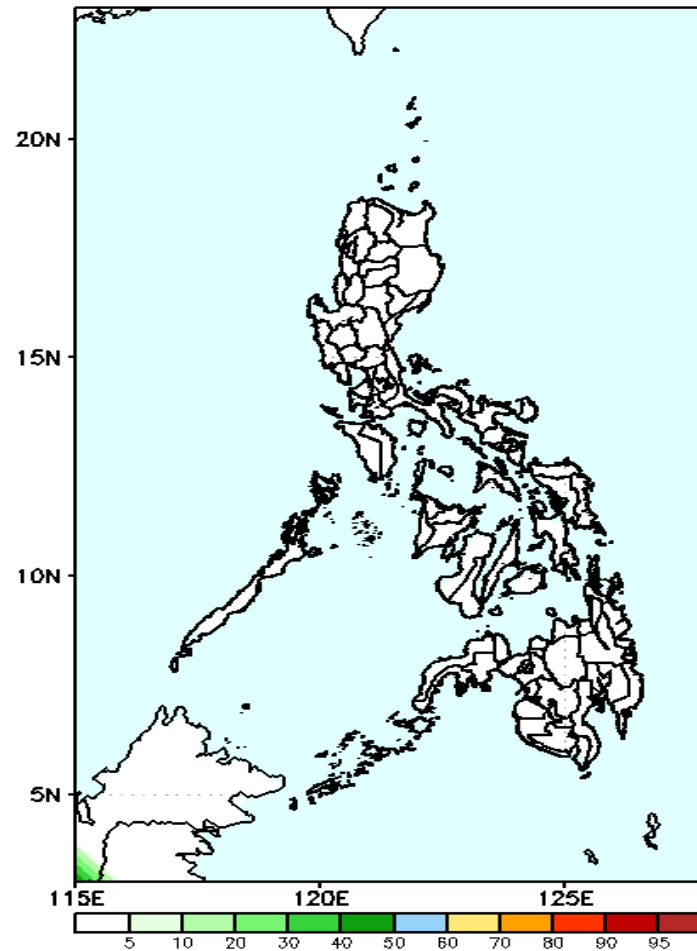
## Week 2: April 16- April 22, 2020

GEFS Week-2 Exceedance Prob. > 100mm  
Valid: 20200416 - 20200422



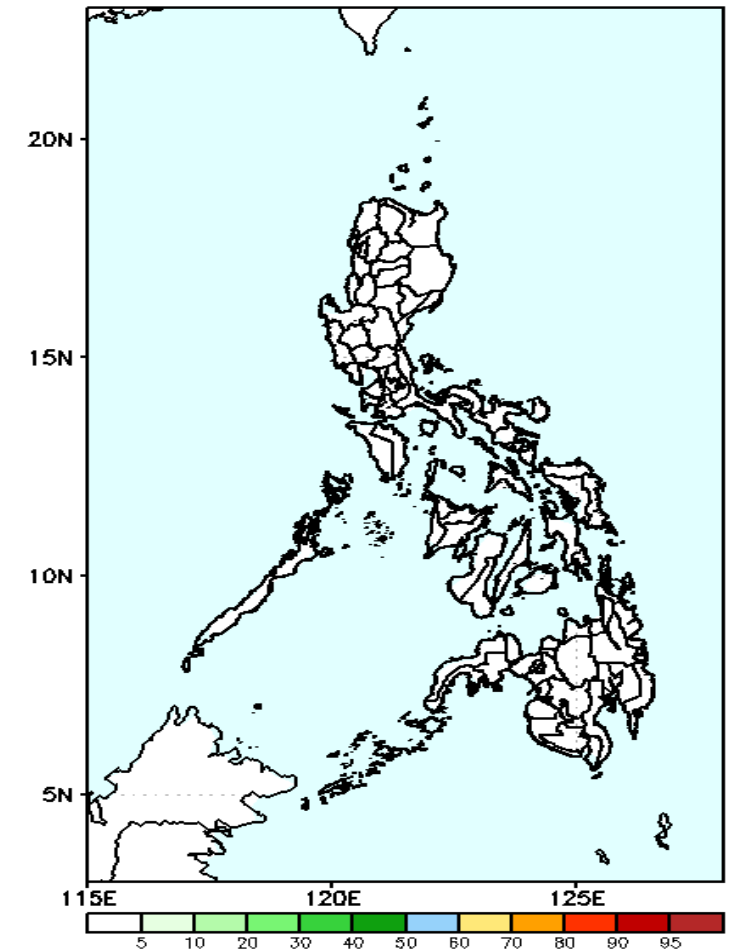
Less probability of rainfall to exceed 100mm in most parts of the country except in CAR and northern Mindanao where there is 40-50% chance during the forecast period

GEFS Week-2 Exceedance Prob. > 150mm  
Valid: 20200416 - 20200422



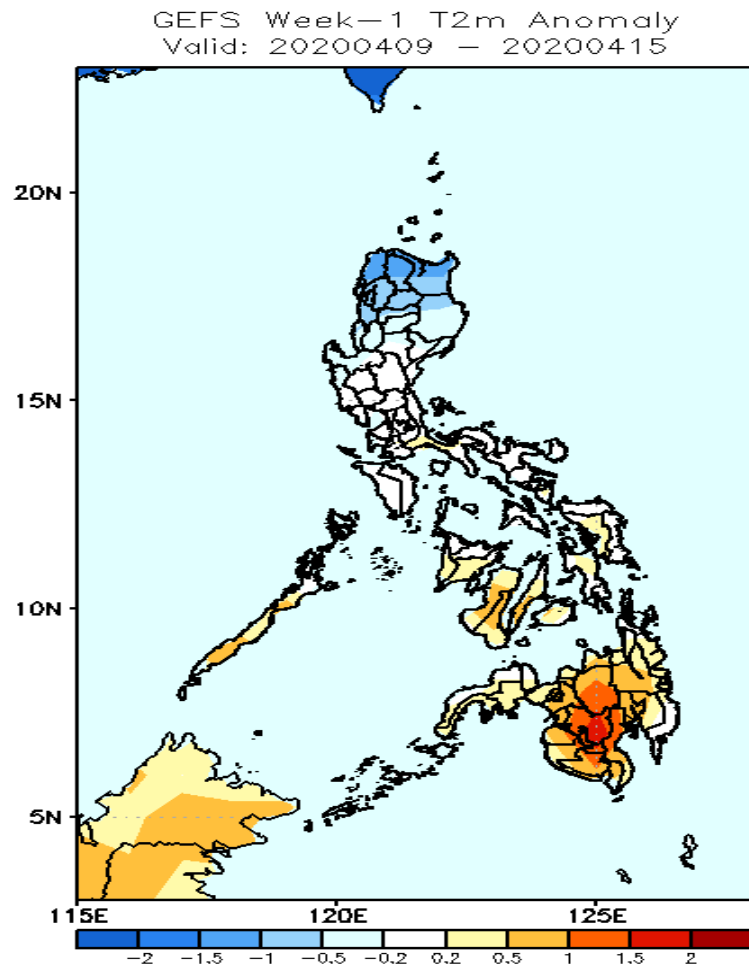
Less probability of rainfall to exceed 150 mm in most parts of the country during the forecast period.

GEFS Week-2 Exceedance Prob. > 200mm  
Valid: 20200416 - 20200422



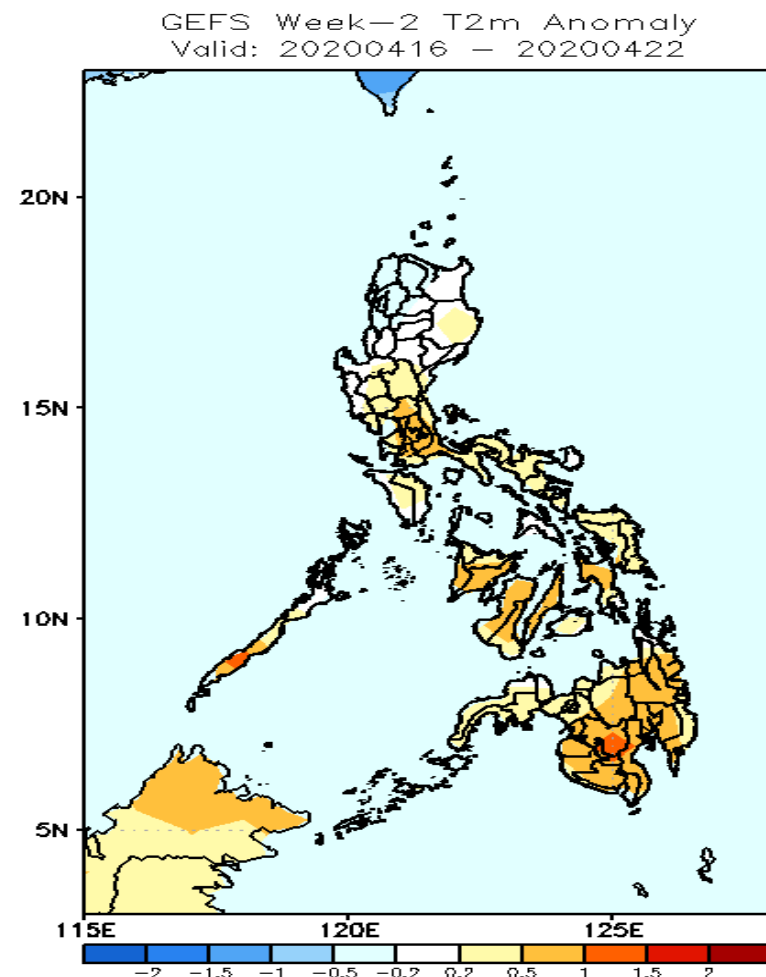
Less probability of rainfall to exceed 200 mm in most parts of the country during the forecast period.

# GEFS Week-1 & 2 Forecasts: T2m Anomaly



## 2m Temperature Week 1: April 09- April 15, 2020

Slightly cooler to cooler average surface air temperature will likely experience in northern Luzon, slightly warmer to warmer than average surface air temperature in western Visayas and Mindanao while the rest of the country will have average surface air temperature during the forecast period.



## 2m Temperature Week 1 April 16- April 22, 2020

Near to slightly warmer than average surface air temperature will likely experience in most parts of the country except in western Luzon where slightly cooler temperature is expected for the forecast period.