



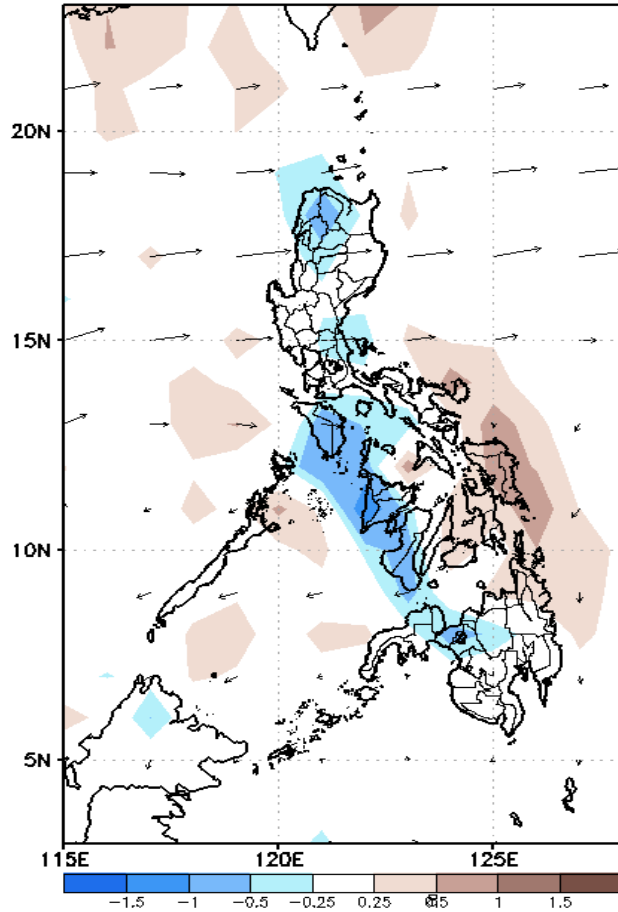
Week 1 & Week 2 Forecast for the Philippines using GEFS Model



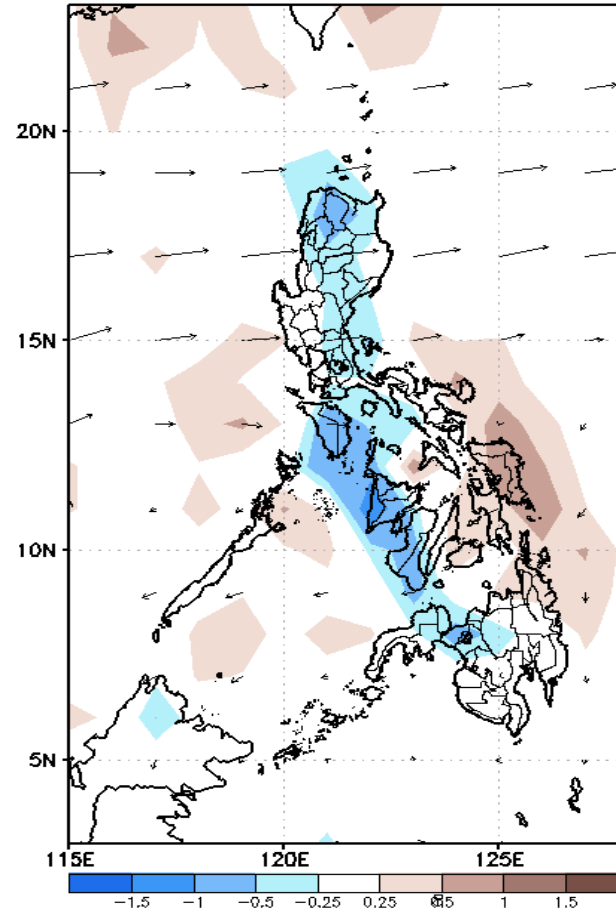
GEFS Week-1 Forecasts: Divergence & Wind Anomaly

Week 1: Dec 09-15, 2021

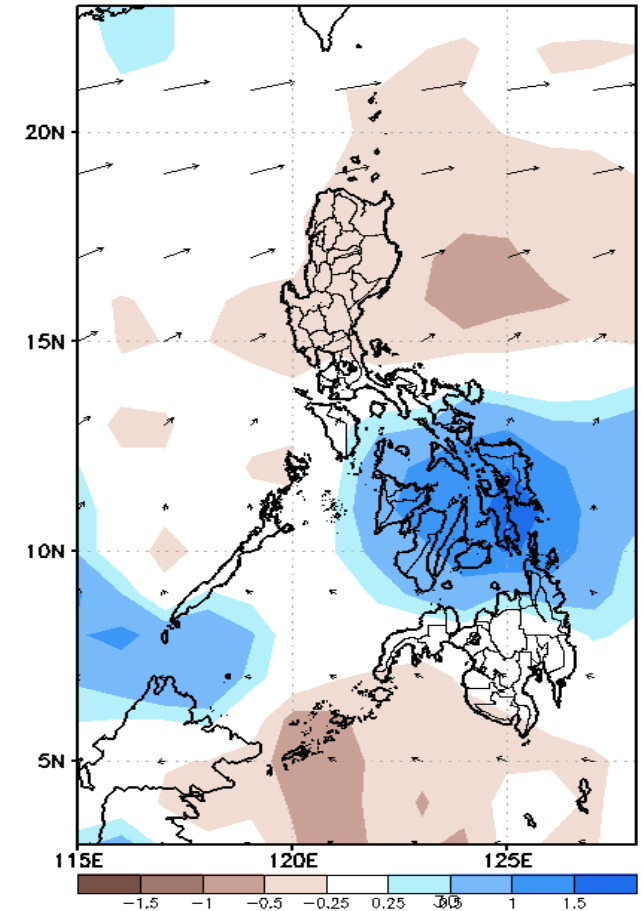
GEFS Week-1 850-hPa Divergence and Wind Anom
Valid: 20211209 - 20211215



GEFS Week-1 700-hPa Divergence and Wind Anom
Valid: 20211209 - 20211215



GEFS Week-1 200-hPa Divergence and Wind Anom
Valid: 20211209 - 20211215

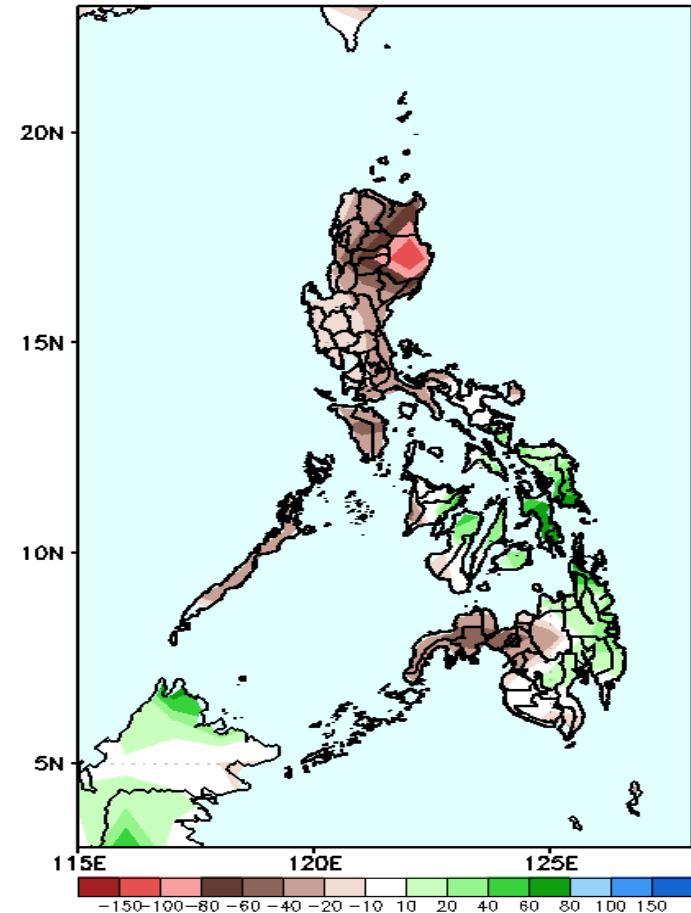


Upper and low level Divergence suggest likelihood of light to moderate precipitation in some parts of Luzon and most parts of Visayas. Northeast Monsoon affecting the eastern sections of Luzon and Visayas and CARAGA region, while Easterlies affecting the rest of Mindanao during the forecast period.

Precipitation Anomaly and Exceedance Probability > 25/50 mm

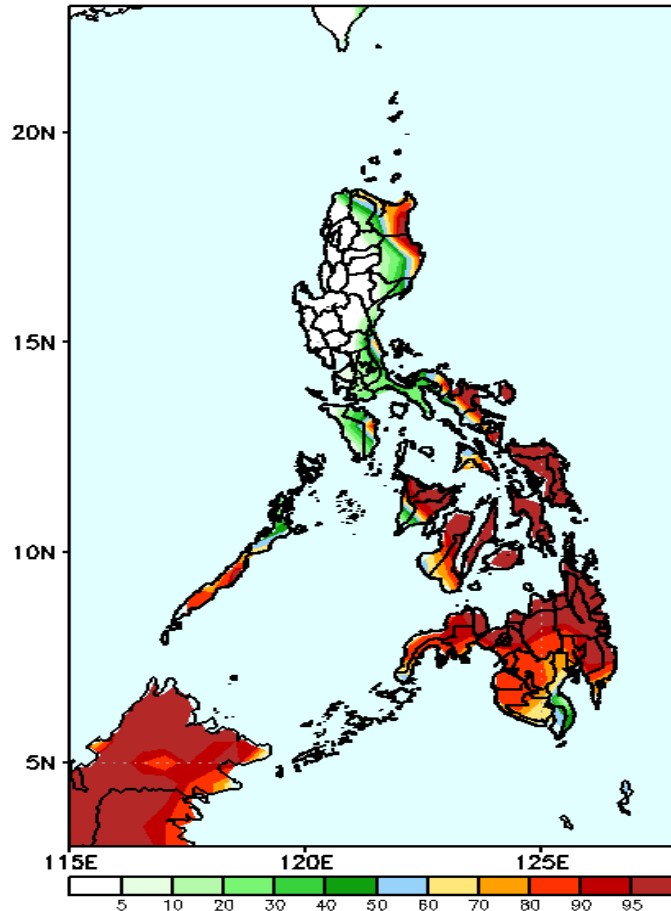
Week 1: Dec 09-15, 2021

GEFS Week-1 Precip Anomaly
Valid: 20211209 - 20211215



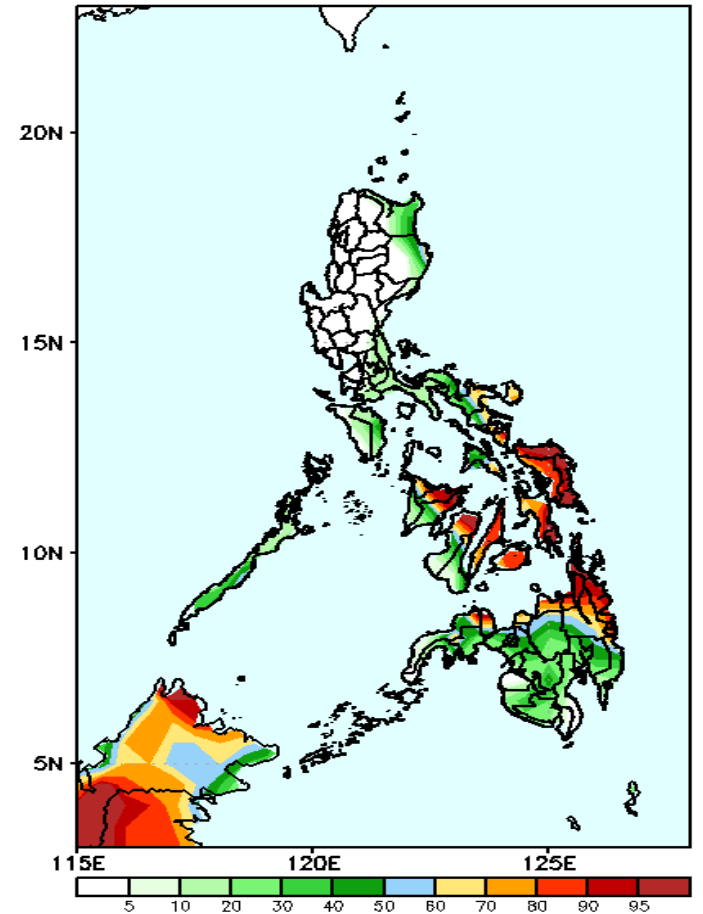
Rainfall deficit of 40-80mm is expected in most parts of Luzon (up to 150mm in Isabela), Antique, Zamboanga Peninsula, Misamis Occ, Lanao del Norte while 40-80mm increase of rainfall in most parts of Visayas and western Mindanao during the forecast period

GEFS Week-1 Exceedance Prob. > 25mm
Valid: 20211209 - 20211215



High probability of rainfall to exceed 25mm in Cagayan, eastern Isabela and most parts of Bicol Region, Visayas and Mindanao while less likely for the rest of Luzon during the forecast period.

GEFS Week-1 Exceedance Prob. > 50mm
Valid: 20211209 - 20211215

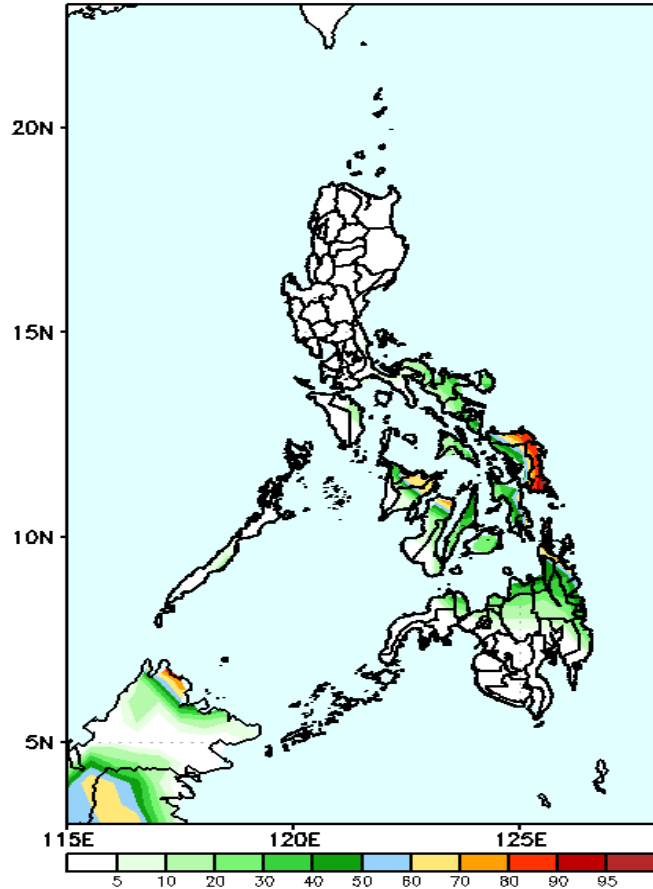


High probability of rainfall to exceed 50mm in Sorsogon, most parts of Visayas (except western parts of Panay and Negros island), CARAGA Region and Misamis Or & Occ. while less likely for the rest of the country during the forecast period.

Exceedance Probability > 100/150/200 mm

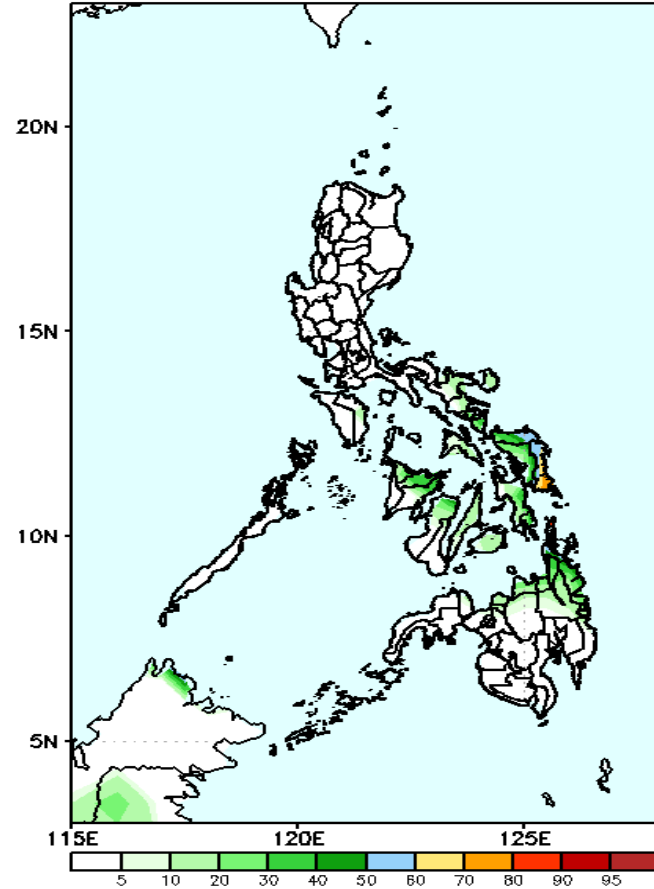
Week 1: Dec 09-15, 2021

GEFS Week-1 Exceedance Prob. > 100mm
Valid: 20211209 - 20211215



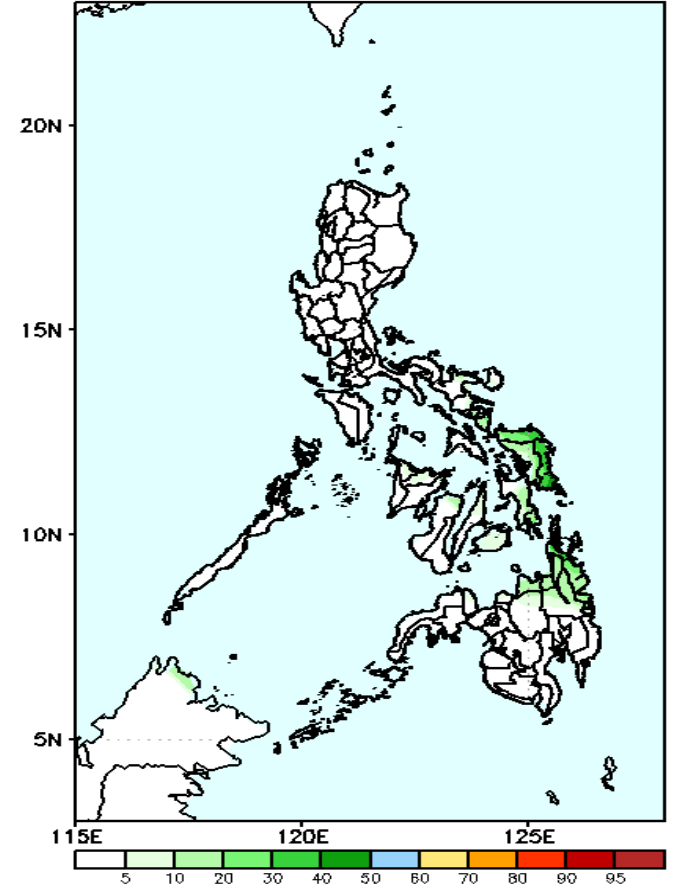
70-90% probability of rainfall to exceed 100mm in Northern & Eastern Samar while less likely for the rest of the country during the forecast period.

GEFS Week-1 Exceedance Prob. > 150mm
Valid: 20211209 - 20211215



Less probability of rainfall to exceed 150mm in most parts of the country is expected during the forecast period.

GEFS Week-1 Exceedance Prob. > 200mm
Valid: 20211209 - 20211215



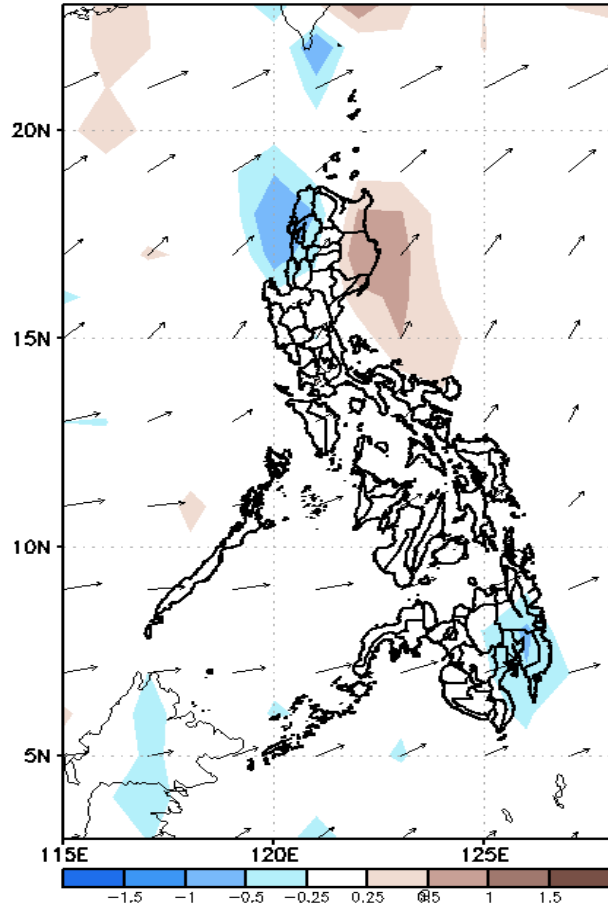
Less probability of rainfall to exceed 200mm in most parts of the country is expected during the forecast period.



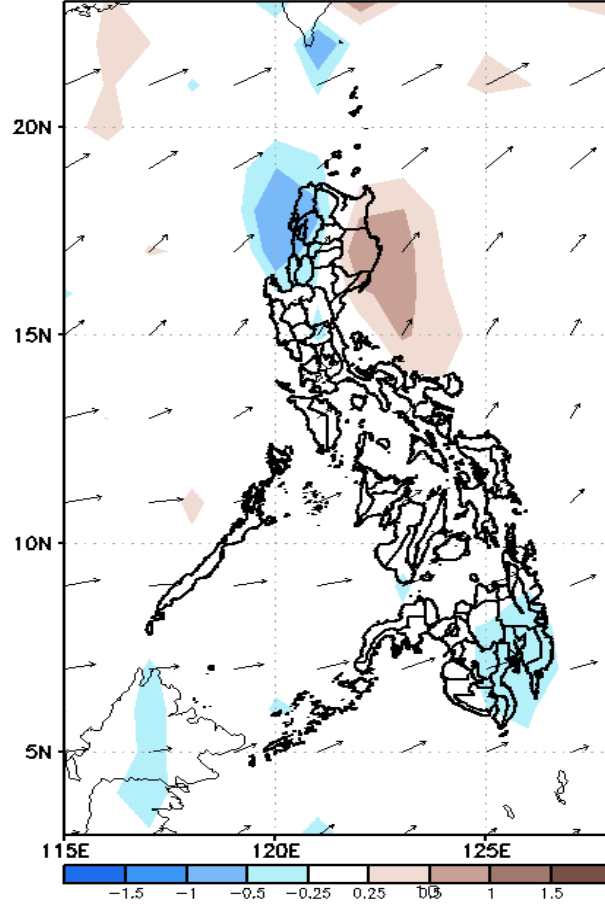
GEFS Week-2 Forecasts: Divergence & Wind Anomaly

Week 2: Dec 16-22, 2021

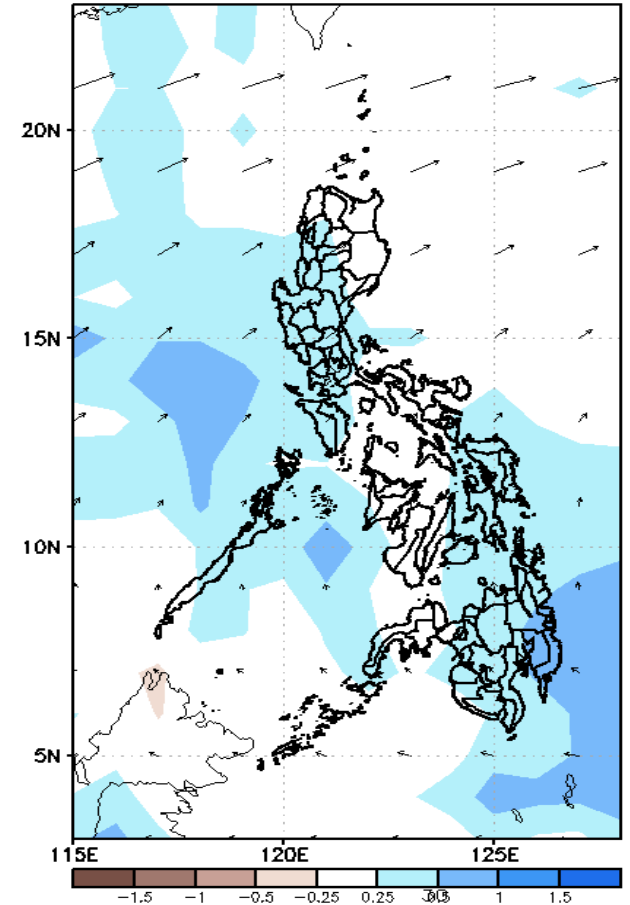
GEFS Week-2 850-hPa Divergence and Wind Anom
Valid: 20211216 - 20211222



GEFS Week-2 700-hPa Divergence and Wind Anom
Valid: 20211216 - 20211222



GEFS week-2 200-hPa Divergence and Wind Anom
Valid: 20211216 - 20211222

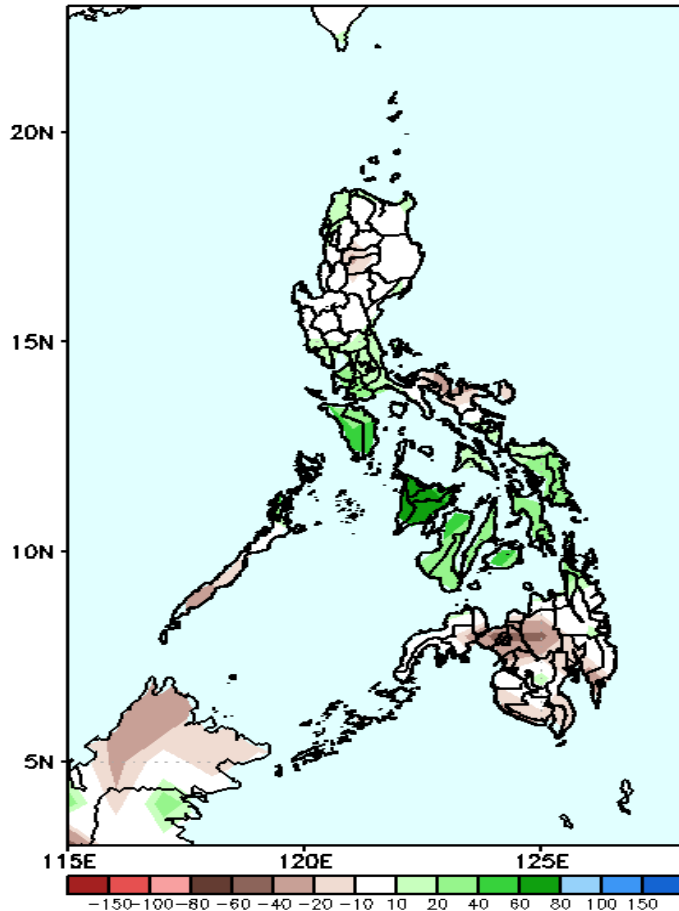


Upper and low level Divergence suggest likelihood of light to moderate precipitation in most parts Western and Central Luzon, Eastern Visayas and most parts of Mindanao. Northeast Monsoon affecting Eastern Luzon and Visayas while Easterlies affecting Mindanao during the forecast period.

Precipitation Anomaly and Exceedance Probability > 25/50 mm

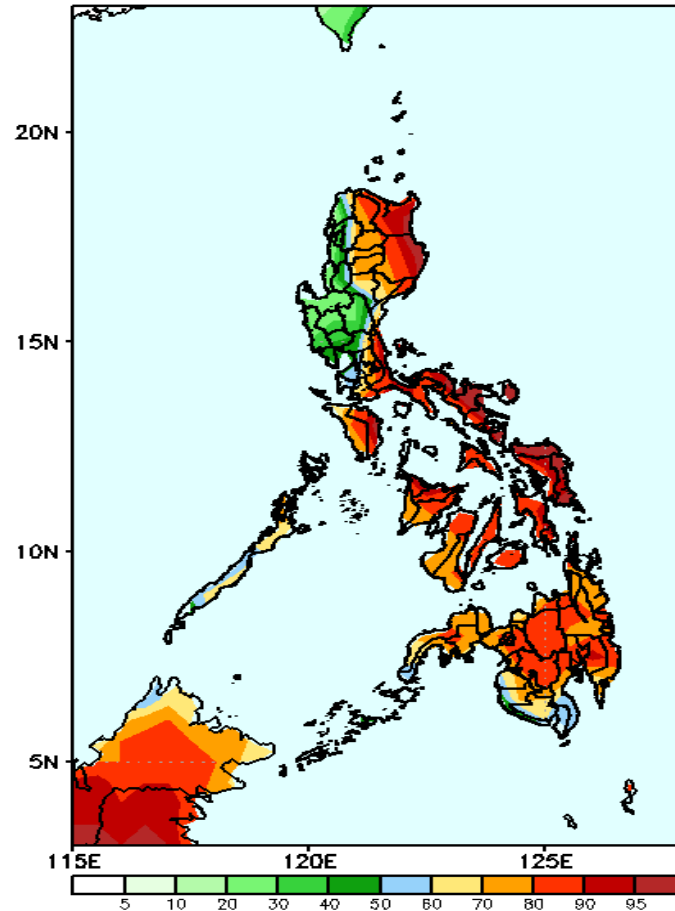
Week 2: Dec 16-22, 2021

GEFS Week-2 Precip Anomaly
Valid: 20211216 - 20211222



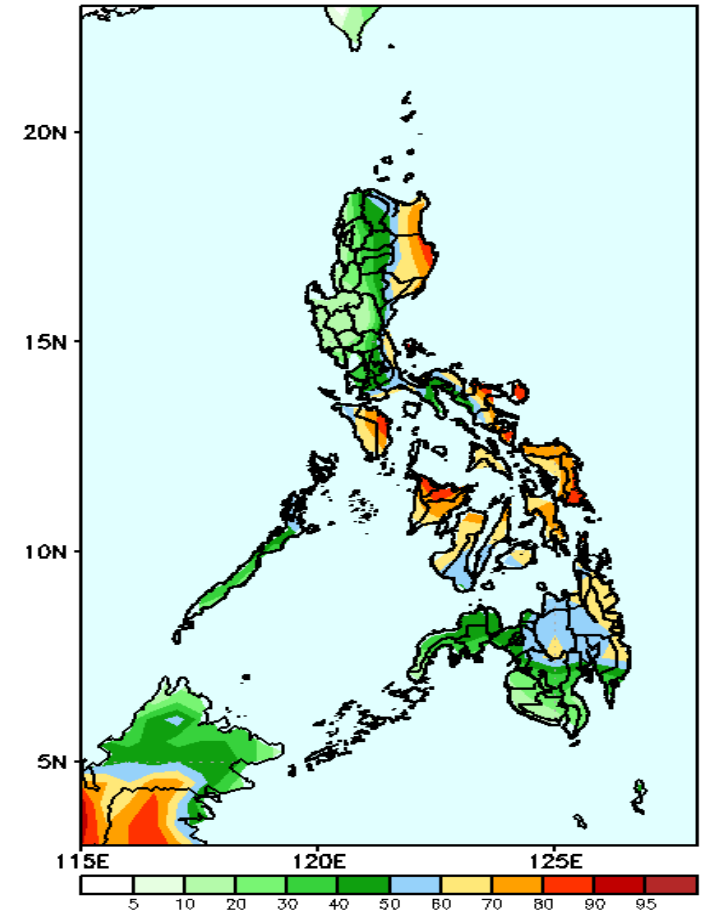
Increase of rainfall of 20-80mm in Mindoro and most parts of Visayas is expected during the forecast period.

GEFS Week-2 Exceedance Prob. > 25mm
Valid: 20211216 - 20211222



High probability of rainfall to exceed 25mm in most parts of the country is expected except in Ilocos Region and Central Luzon during the forecast period.

GEFS Week-2 Exceedance Prob. > 50mm
Valid: 20211216 - 20211222

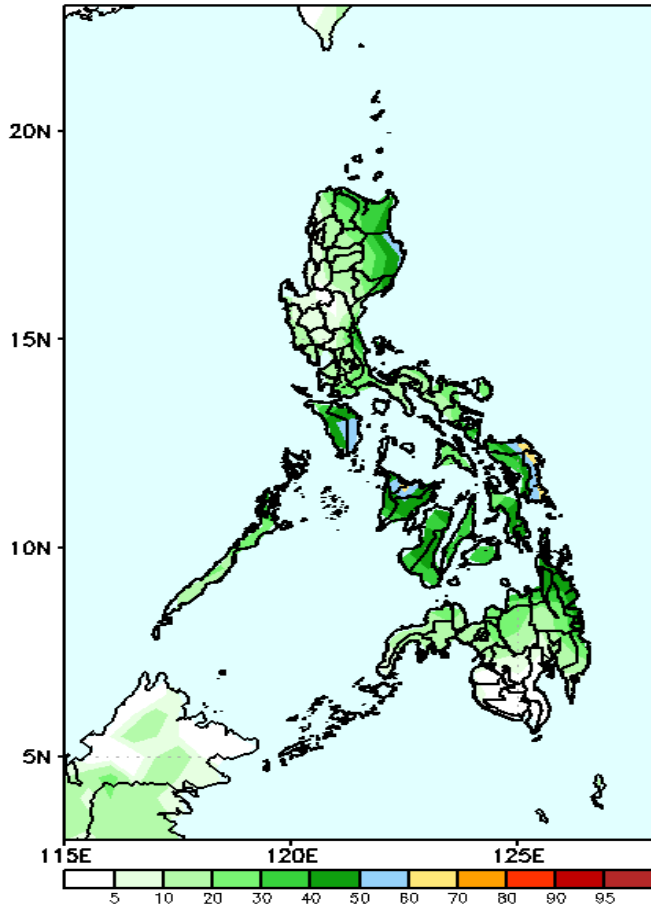


70-95% probability of rainfall to exceed 50mm in Cagayan, Isabela, Quirino, Mindoro, Bicol Region and most parts of Visayas and eastern Mindanao while less likely for the rest of the country during the forecast period.

Exceedance Probability > 100/150/200 mm

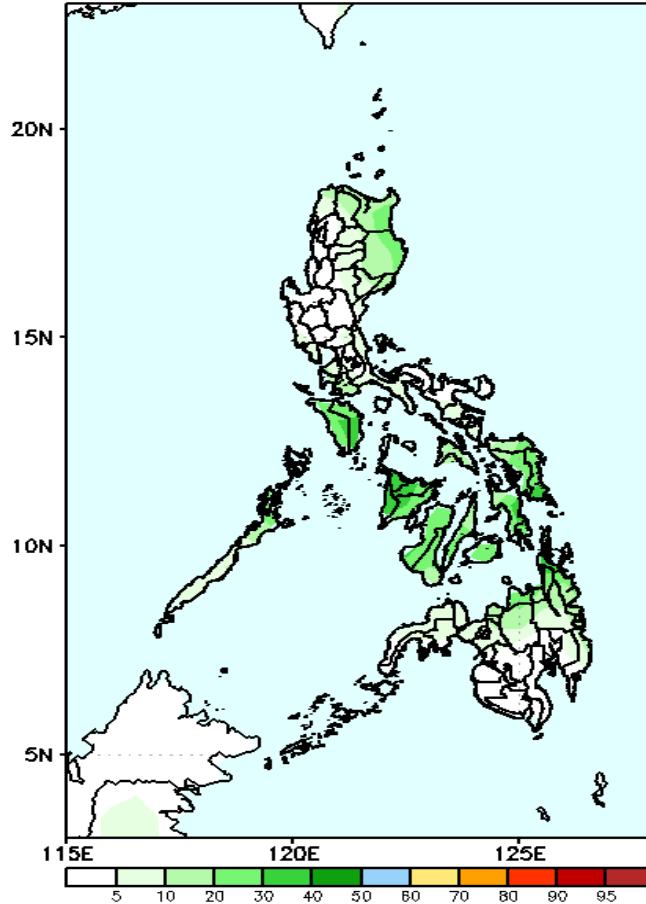
Week 2: Dec 16-22, 2021

GEFS Week-2 Exceedance Prob. > 100mm
Valid: 20211216 - 20211222



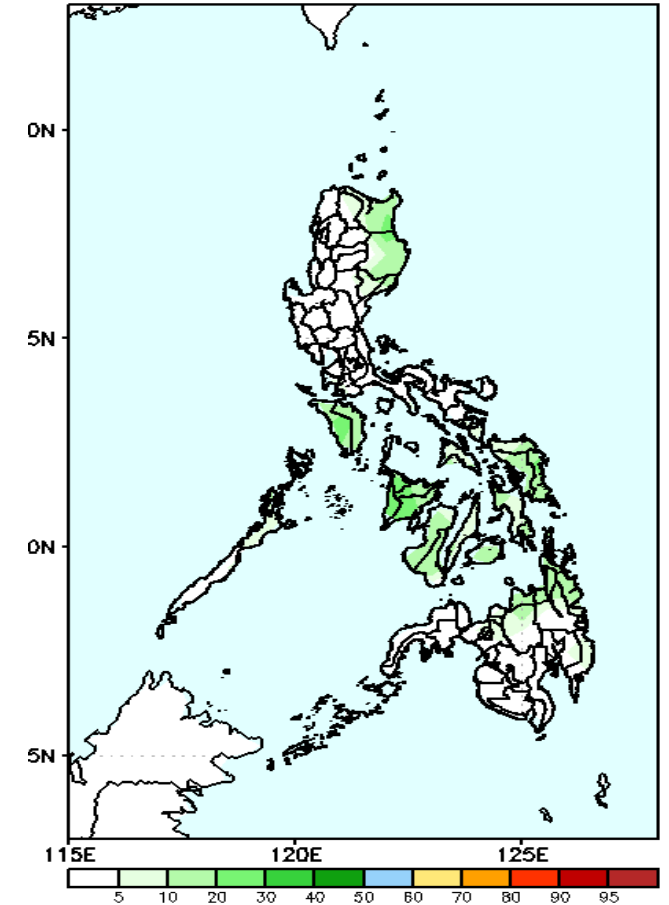
Less probability of rainfall to exceed 100mm in most parts of the country is expected during the forecast period.

GEFS Week-2 Exceedance Prob. > 150mm
Valid: 20211216 - 20211222



Less probability of rainfall to exceed 150mm in most parts of the country is expected during the forecast period.

EFS Week-2 Exceedance Prob. > 200mm
Valid: 20211216 - 20211222

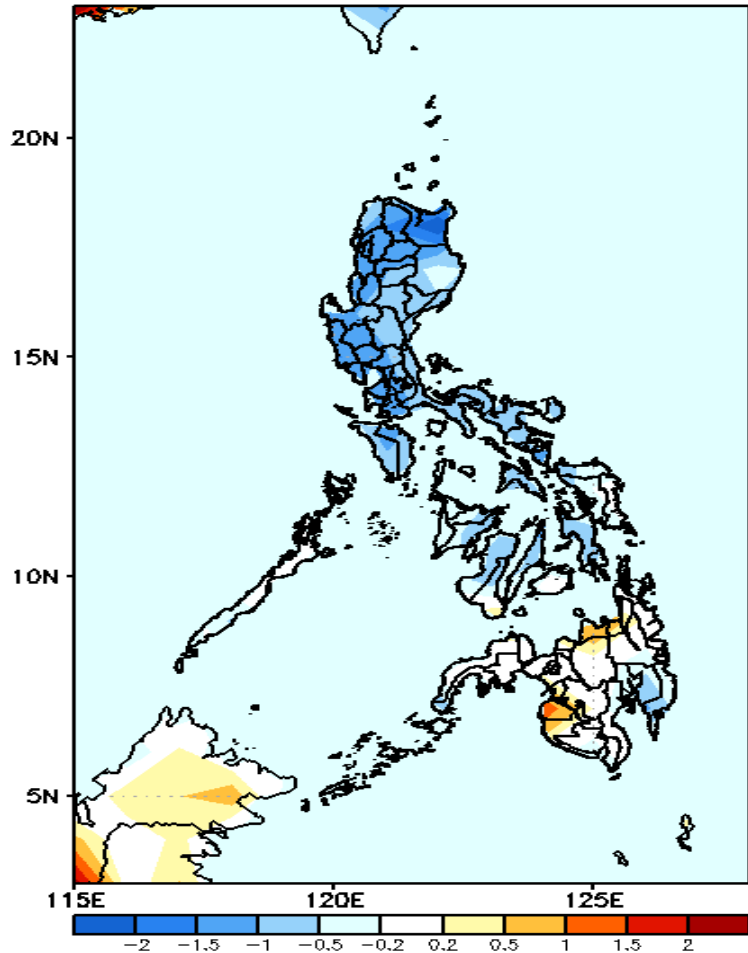


Less probability of rainfall to exceed 200mm in most parts of the country is expected during the forecast period.



GEFS Week-1 & 2 Forecasts: T2m Anomaly

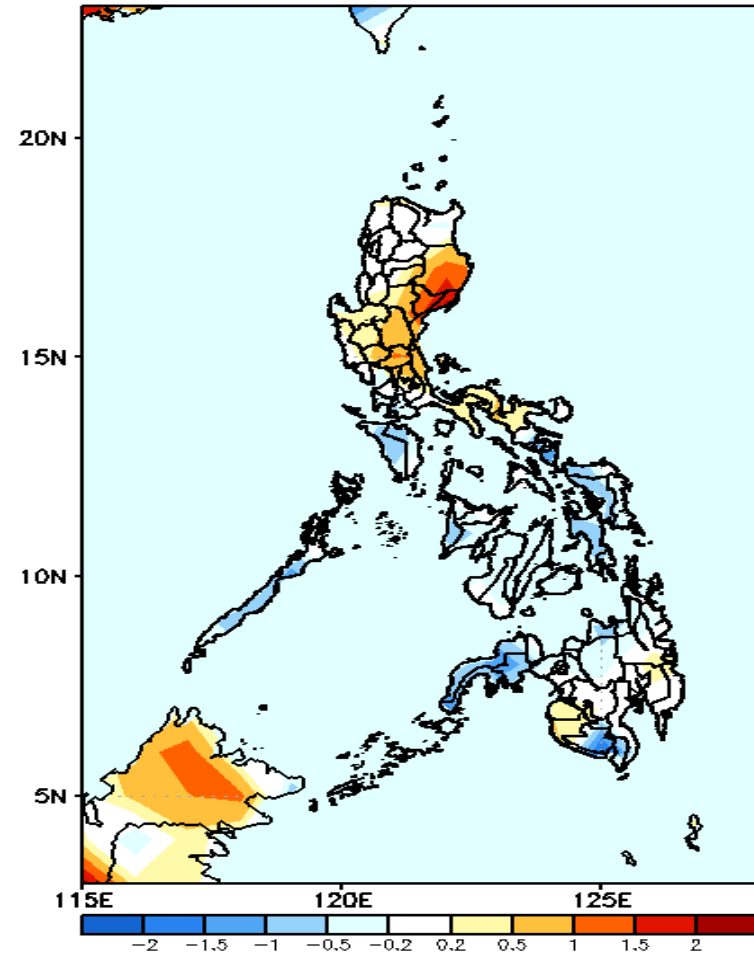
GEFS Week-1 T2m Anomaly
Valid: 20211209 - 20211215



2m Temperature Week 1: Dec 09-15, 2021

Cooler than average surface air temperature will likely experience in most parts of Luzon and Visayas while Average to slightly warmer in Mindanao during the forecast period.

GEFS Week-2 T2m Anomaly
Valid: 20211216 - 20211222



2m Temperature Week 2: Dec 16-22, 2021

Slightly to warmer than average surface air temperature will likely experience in most parts of eastern Luzon while average to slightly cooler temperature for the rest of the country during the forecast period.