



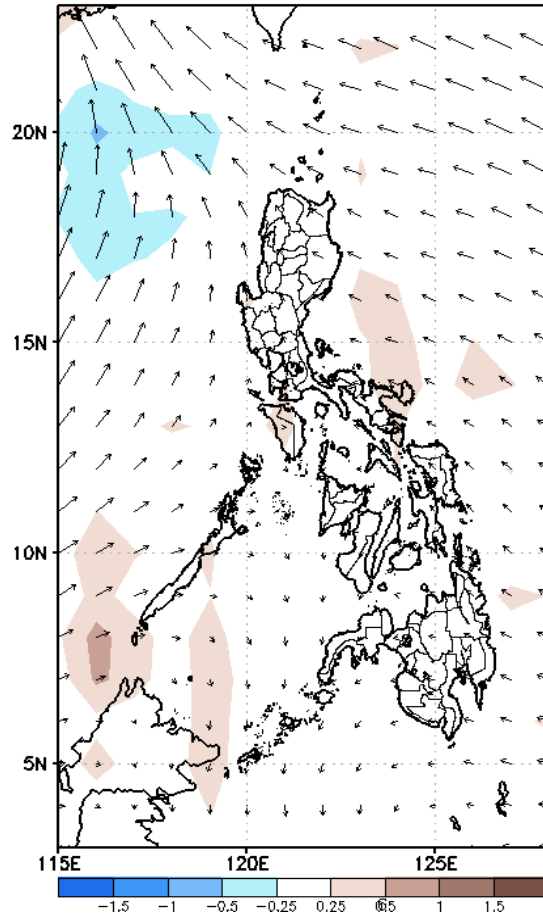
# Week 1 & Week 2 Forecast for the Philippines using GEFS Model



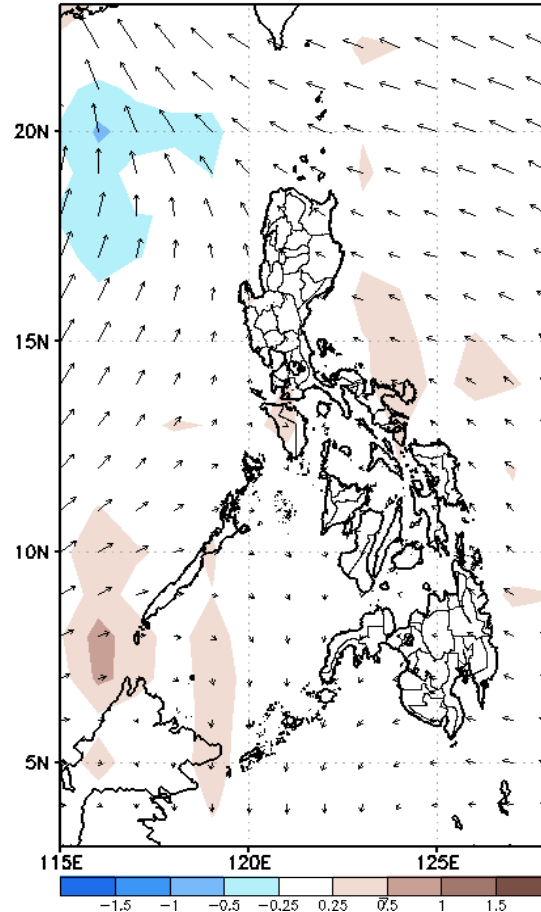
# GEFS Week-1 Forecasts: Wind Anomaly Forecast

Week 1: Aug 10-16, 2022

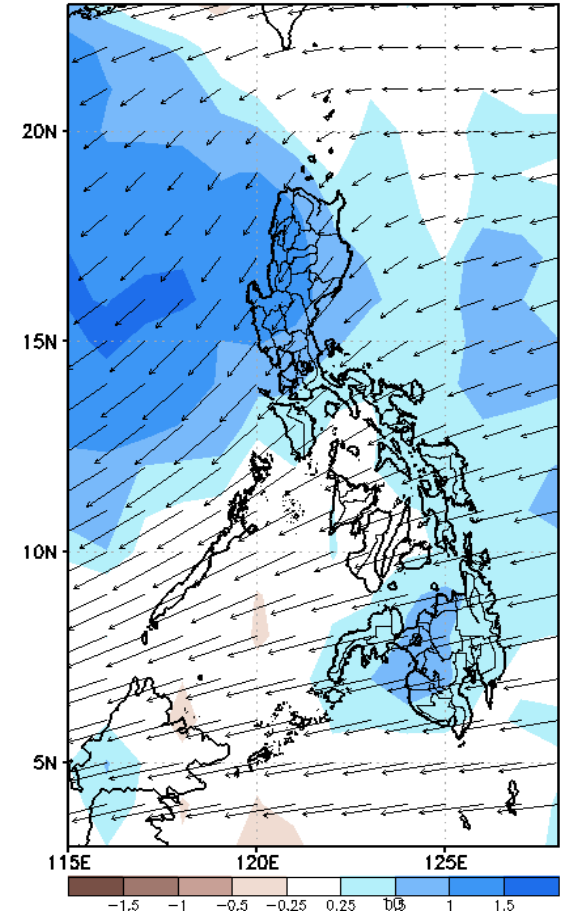
GEFS Week-1 850-hPa Divergence and Wind Anomaly  
Valid: 20220810 - 20220816



GEFS Week-1 700-hPa Divergence and Wind Anomaly  
Valid: 20220810 - 20220816



GEFS Week-1 200-hPa Divergence and Wind Anomaly  
Valid: 20220810 - 20220816

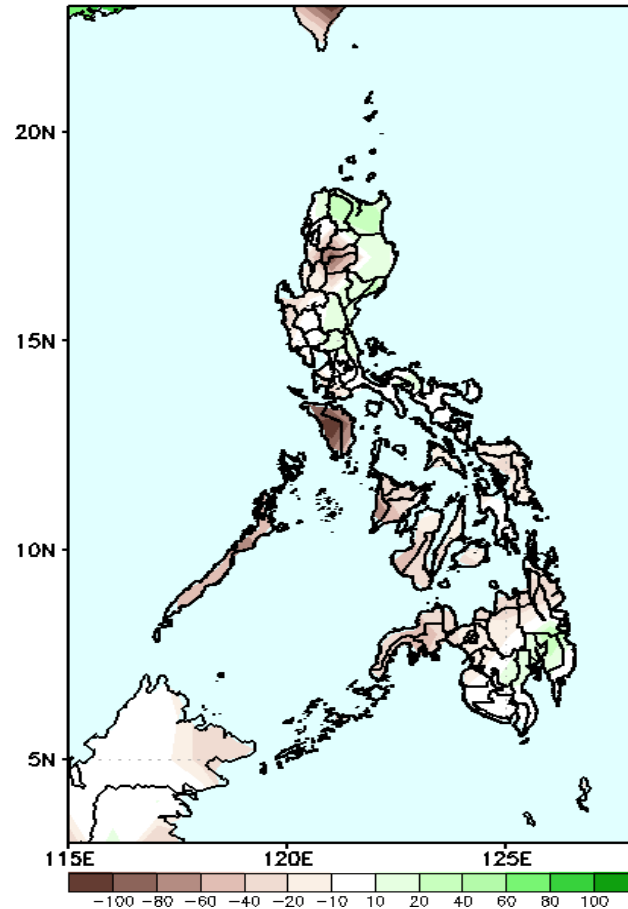


Southwest Monsoon affecting most parts of the western section of Luzon; Easterlies affecting the rest of the country during the forecast period.

# Precipitation Anomaly and Exceedance Probability > 25/50 mm

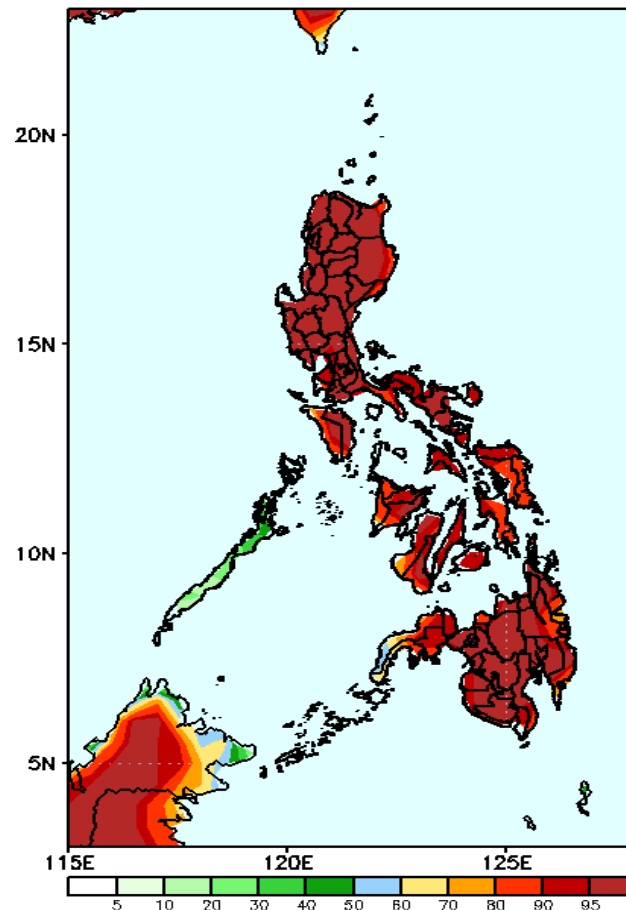
**Week 1: Aug 10-16, 2022**

GEFS Week-1 Precip Anomaly  
Valid: 20220810 - 20220816



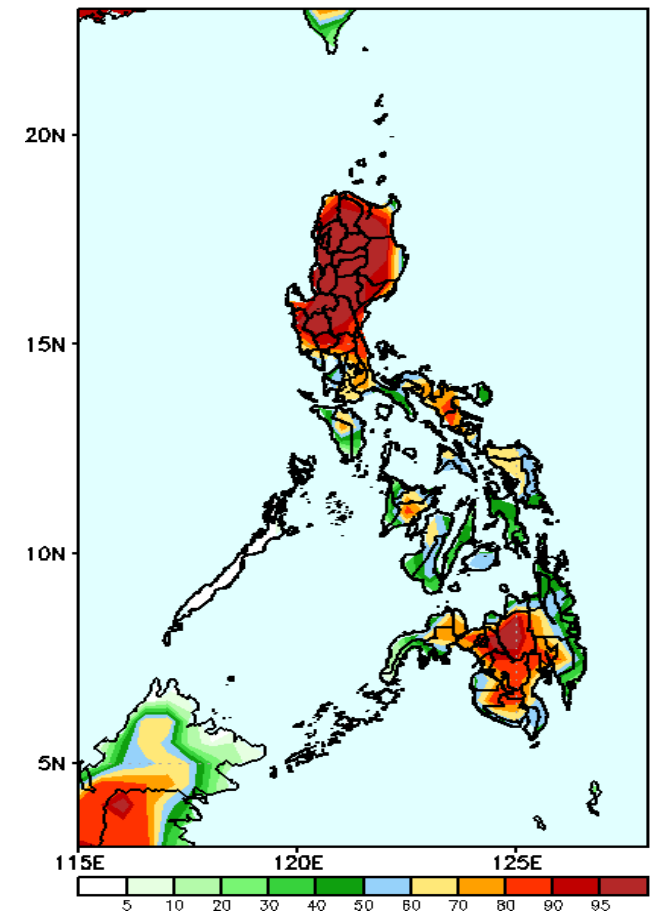
Rainfall deficit of 40-100mm is expected in most parts of the country except in Apayao and Cagayan Valley where increase of rainfall of 40-70mm is more likely during the forecast period.

GEFS Week-1 Exceedance Prob. > 25mm  
Valid: 20220810 - 20220816



High probability of rainfall to exceed 25mm in most parts of the country during the forecast period.

GEFS Week-1 Exceedance Prob. > 50mm  
Valid: 20220810 - 20220816

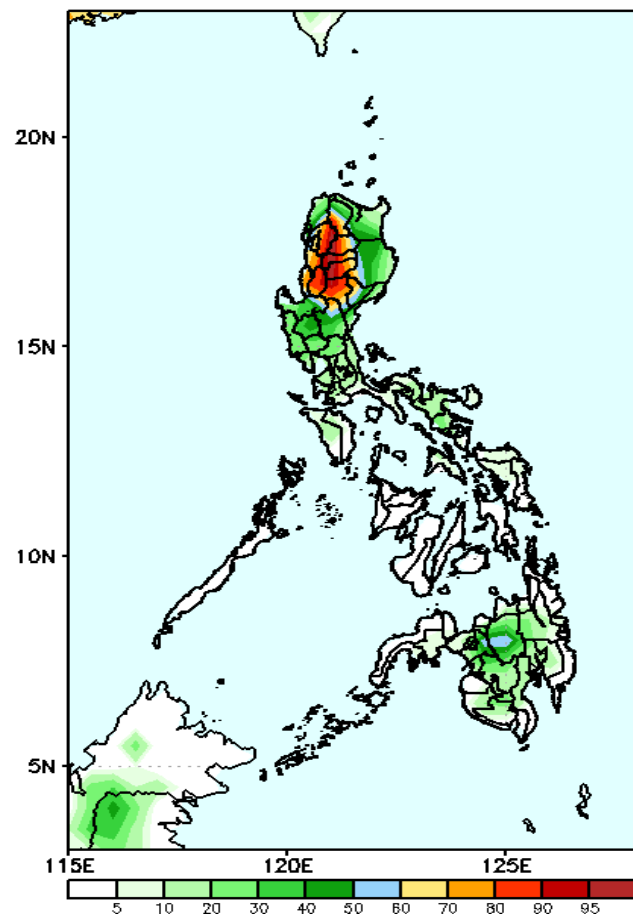


High probability of rainfall to exceed 50mm in most parts of Luzon (except MIMAROPA), some areas in Visayas and most parts of Mindanao while less likely for the rest of the country during the forecast period.

# Exceedance Probability > 100/150/200 mm

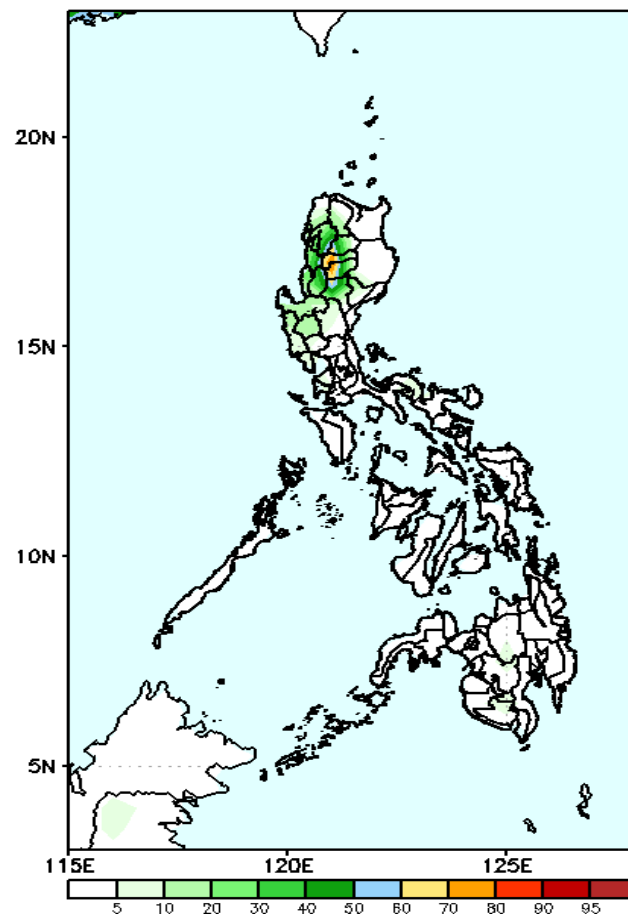
Week 1: Aug 10-16, 2022

GEFS Week-1 Exceedance Prob. > 100mm  
Valid: 20220810 - 20220816



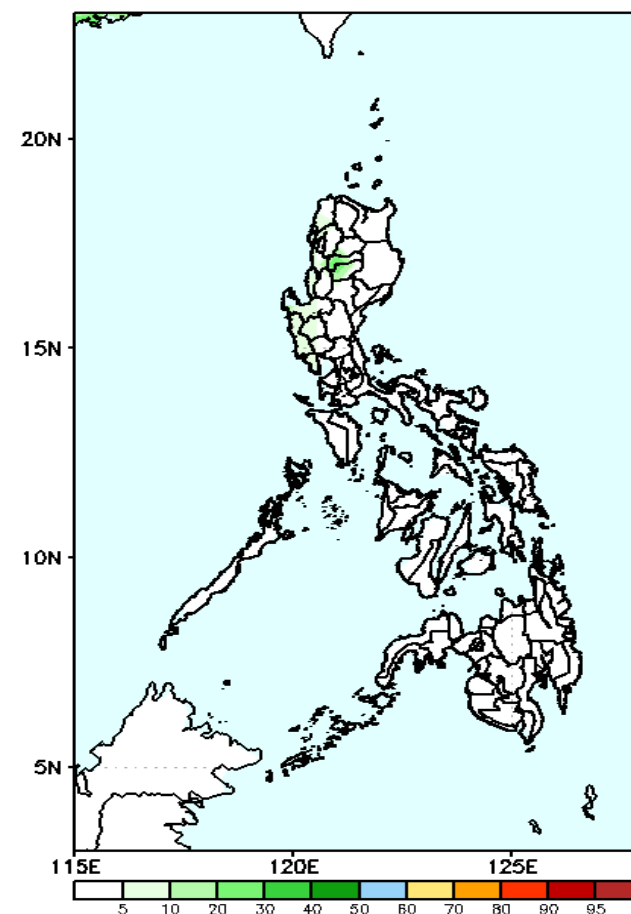
High probability of rainfall to exceed 100mm in most parts of CAR, La Union and Nueva Vizcaya while less likely for the rest of the country during the forecast period.

GEFS Week-1 Exceedance Prob. > 150mm  
Valid: 20220810 - 20220816



Low probability of rainfall to exceed 150mm in most parts of the country during the forecast period.

GEFS Week-1 Exceedance Prob. > 200mm  
Valid: 20220810 - 20220816



Low probability of rainfall to exceed 200mm in most parts of the country during the forecast period.

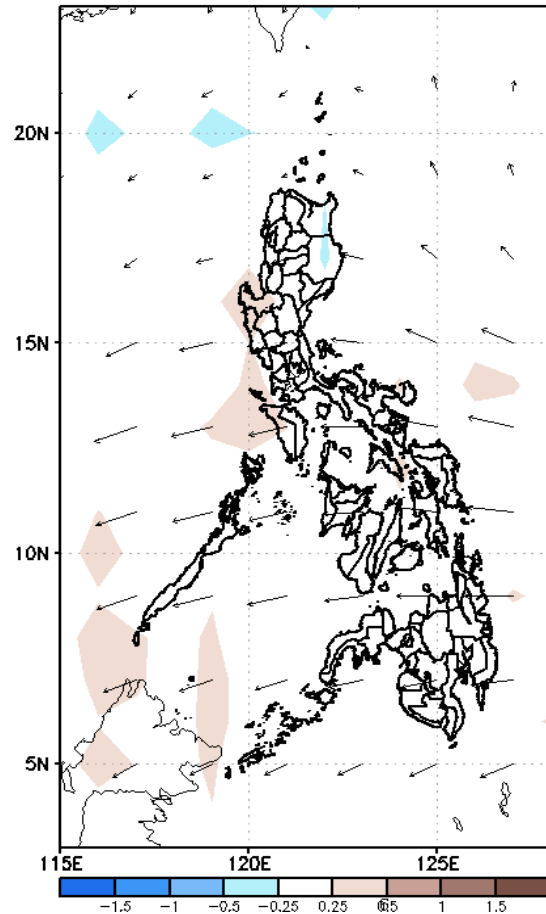
ong  
ASA



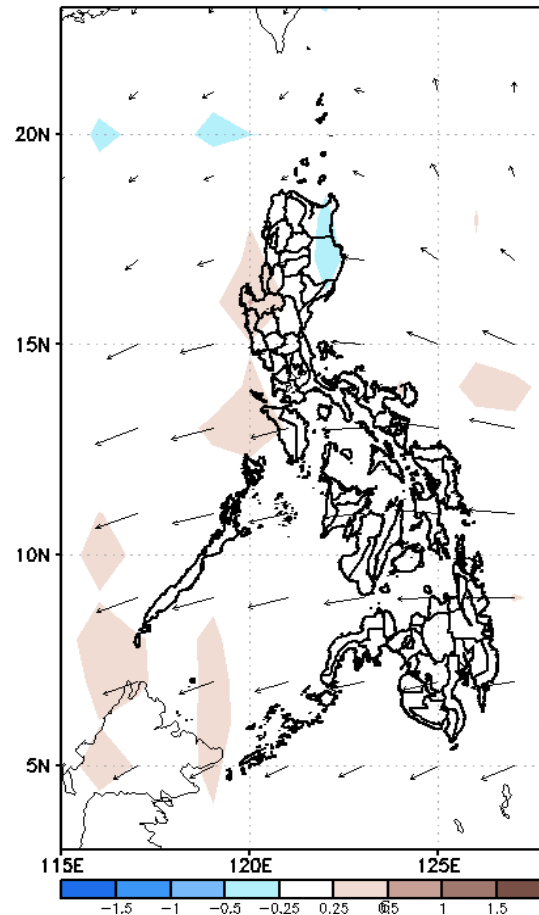
# GEFS Week-2 Forecasts: Wind Anomaly Forecast

Week 2: Aug 17-23, 2022

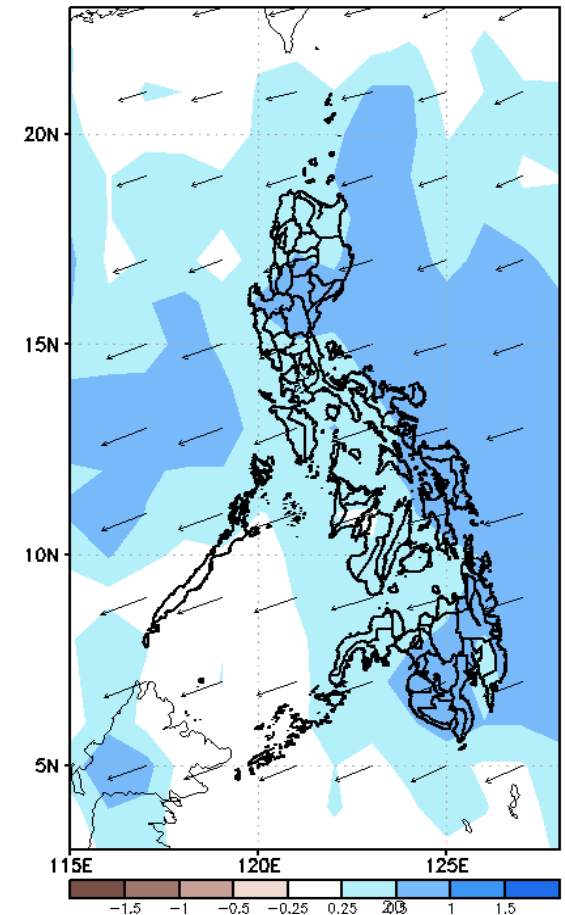
GEFS Week-2 850-hPa Divergence and Wind Anomaly  
Valid: 20220817 - 20220823



GEFS Week-2 700-hPa Divergence and Wind Anomaly  
Valid: 20220817 - 20220823



GEFS week-2 200-hPa Divergence and Wind Anomaly  
Valid: 20220817 - 20220823

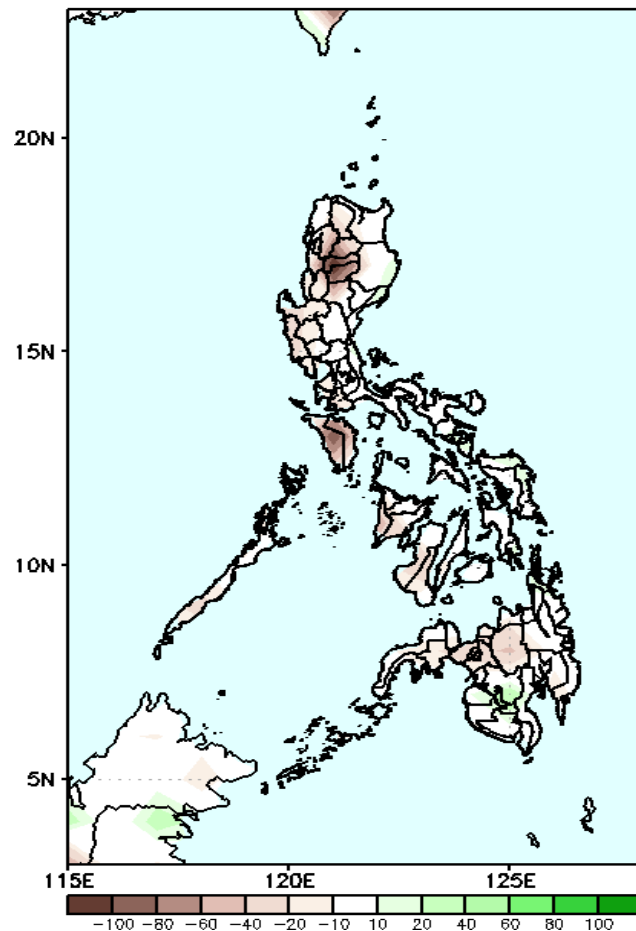


Easterlies affecting most parts of the country during the forecast period.

# Precipitation Anomaly and Exceedance Probability > 25/50 mm

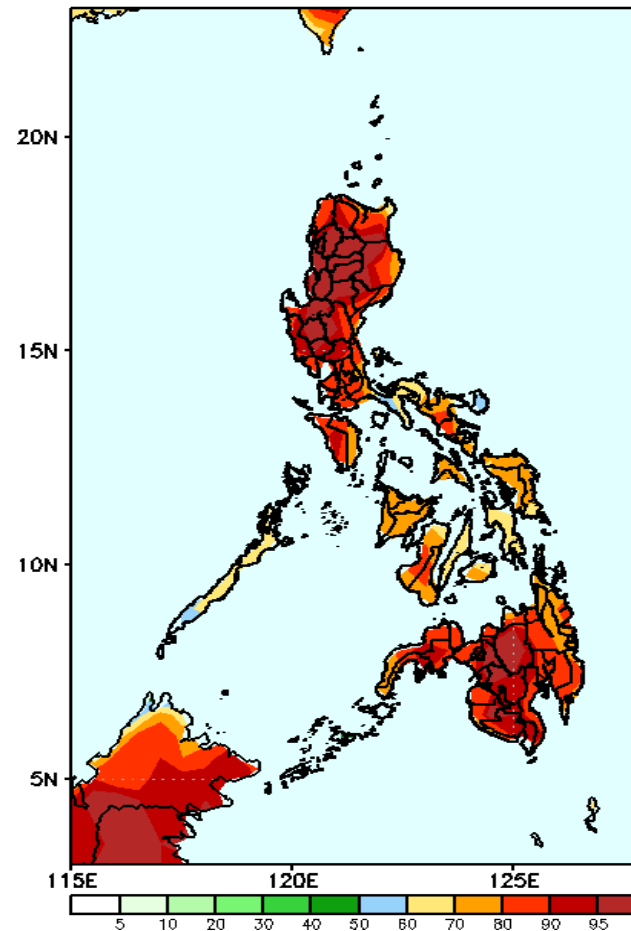
Week 2: Aug 17-23, 2022

GEFS Week-2 Precip Anomaly  
Valid: 20220817 - 20220823



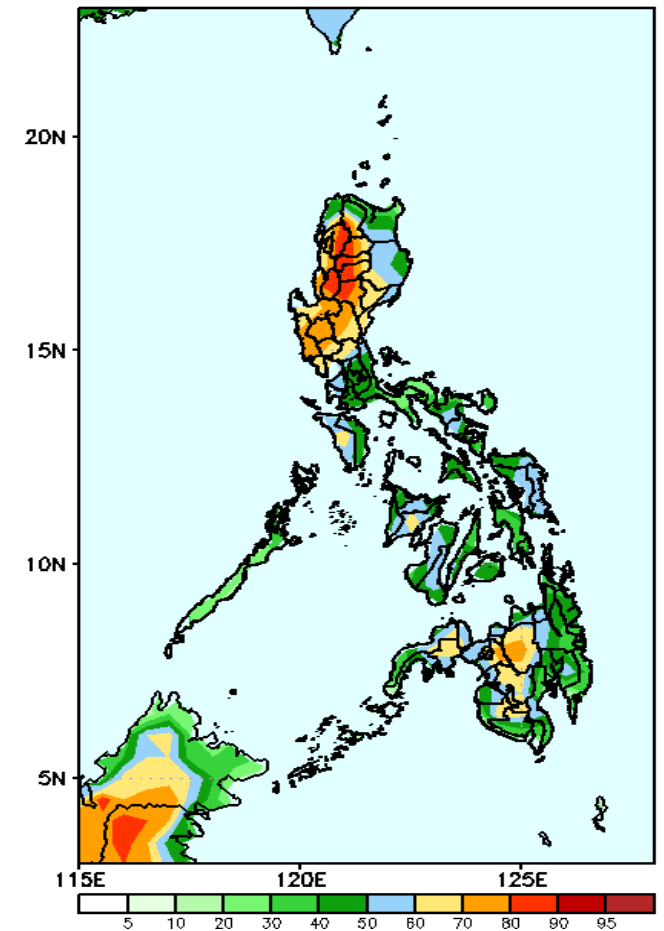
Rainfall deficit of up to 100mm is expected in Kalinga, Mt. Province, Ifugao and Mindoro and 20-40mm for the rest of the country during the forecast period.

GEFS Week-2 Exceedance Prob. > 25mm  
Valid: 20220817 - 20220823



High probability of rainfall to exceed 25mm in most parts of the country during the forecast period.

GEFS Week-2 Exceedance Prob. > 50mm  
Valid: 20220817 - 20220823



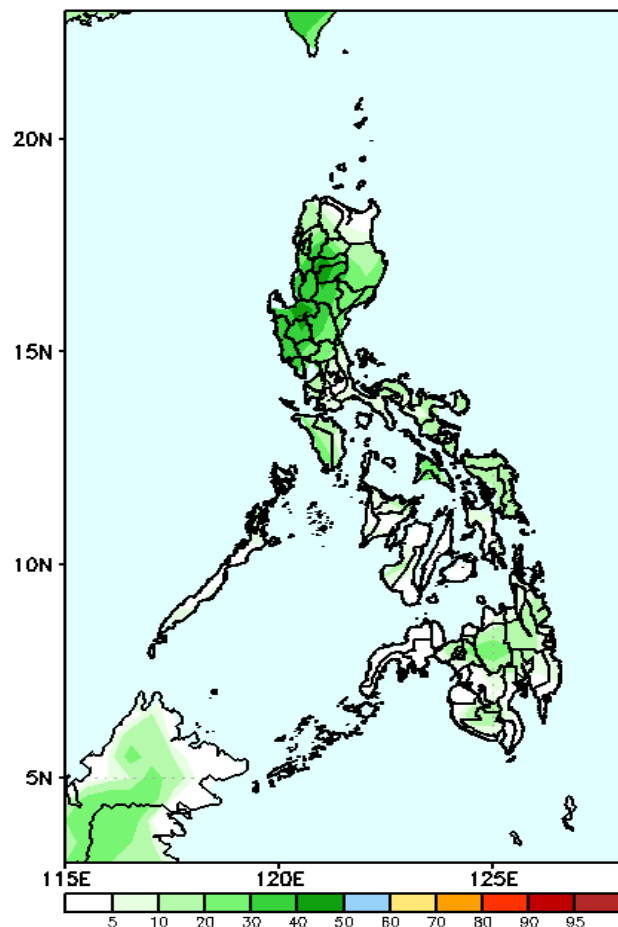
High probability of rainfall to exceed 50mm in most parts of Northern and Central Luzon, some areas in Visayas and Mindanao while less likely for the rest of the country during the forecast period.



# Exceedance Probability > 100/150/200 mm

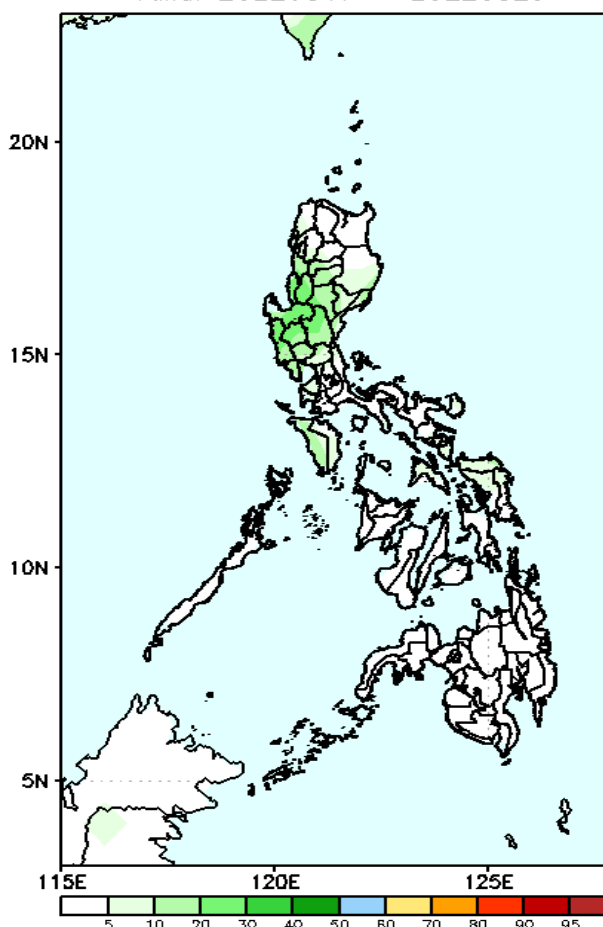
Week 2: Aug 17-23, 2022

GEFS Week-2 Exceedance Prob. > 100mm  
Valid: 20220817 – 20220823



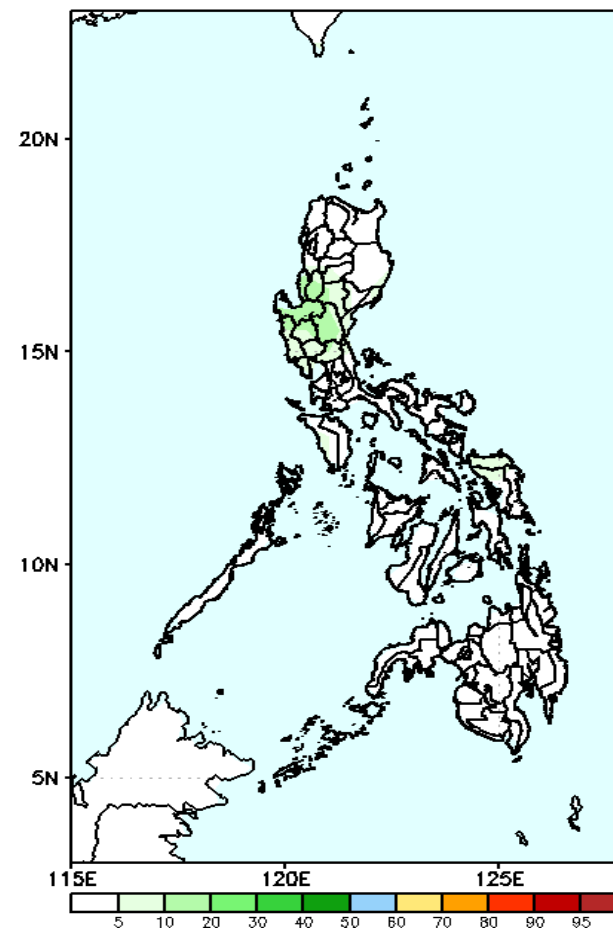
Low probability of rainfall to exceed 100mm in most parts of the country during the forecast period.

GEFS Week-2 Exceedance Prob. > 150mm  
Valid: 20220817 – 20220823



Low probability of rainfall to exceed 150mm in most parts of the country during the forecast period.

GEFS Week-2 Exceedance Prob. > 200mm  
Valid: 20220817 – 20220823

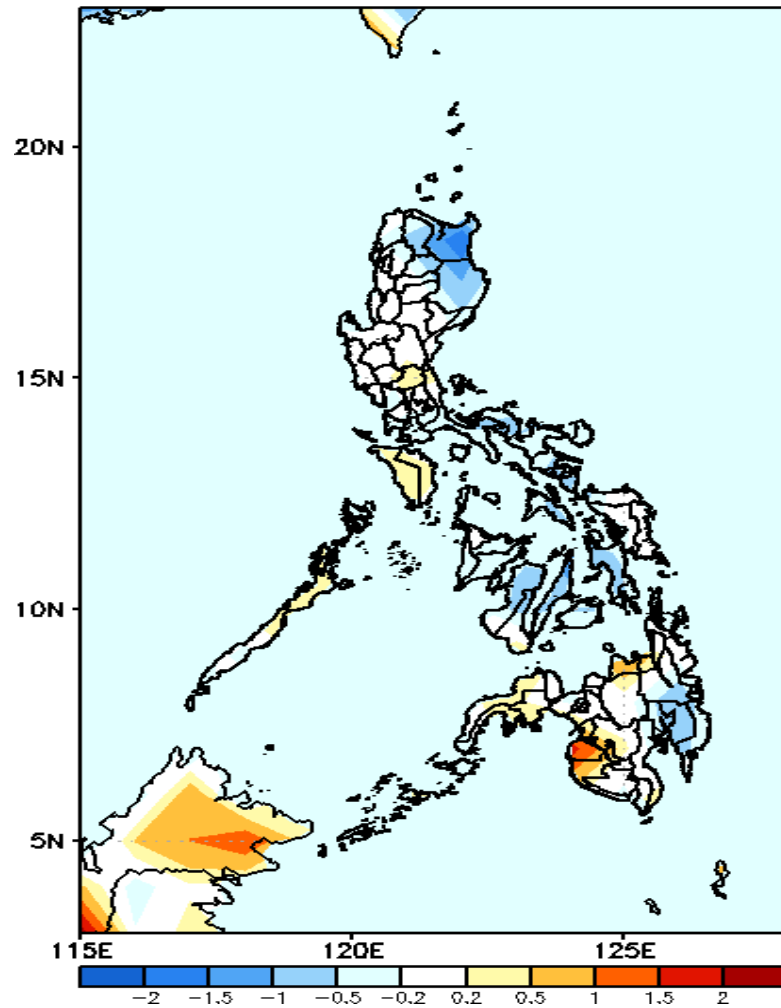


Low probability of rainfall to exceed 200mm in most parts of the country during the forecast period.



# GEFS Week-1 & 2 Forecasts: T2m Anomaly

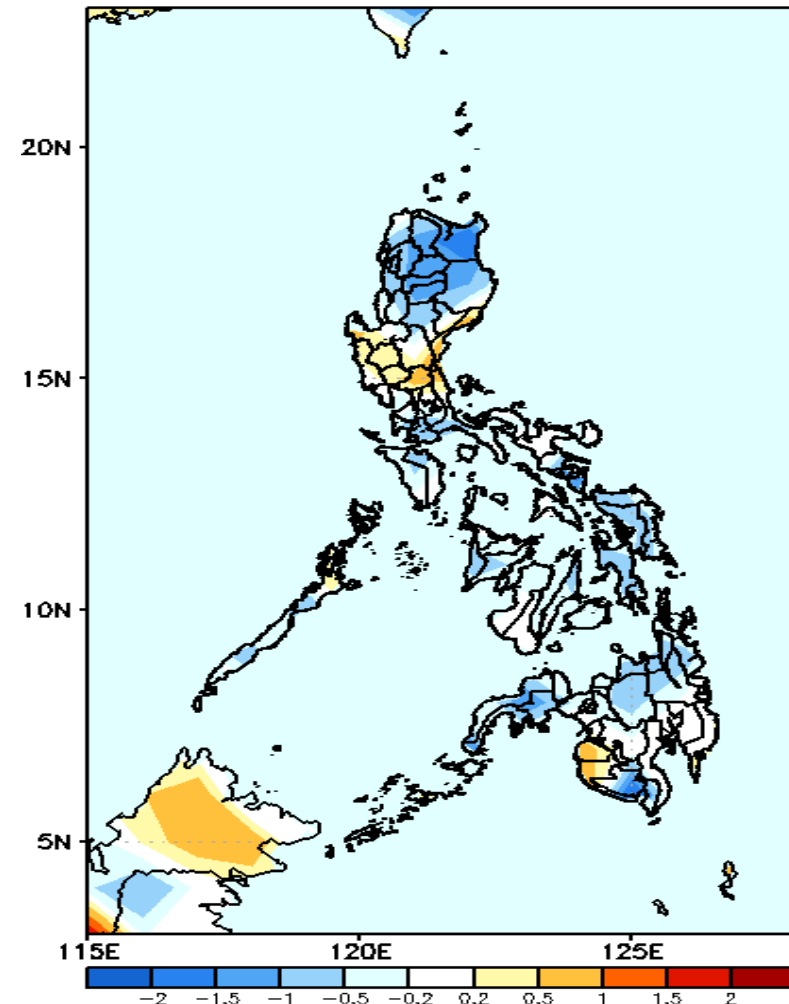
GEFS Week-1 T2m Anomaly  
Valid: 20220810 – 20220816



## 2m Temperature Week 1: Aug 10-16, 2022

Near to cooler than average surface air temperature will likely experience in most parts of the country except in Misamis Oriental and Maguindanao (slightly warmer) during the forecast period.

GEFS Week-2 T2m Anomaly  
Valid: 20220817 – 20220823



## 2m Temperature Week 2: Aug 17-23, 2022

Near to cooler than average surface air temperature will likely experience in most parts of the country except in Central Luzon, Maguindanao and Sultan Kudarat where slightly warmer temperature is expected during the forecast period.