



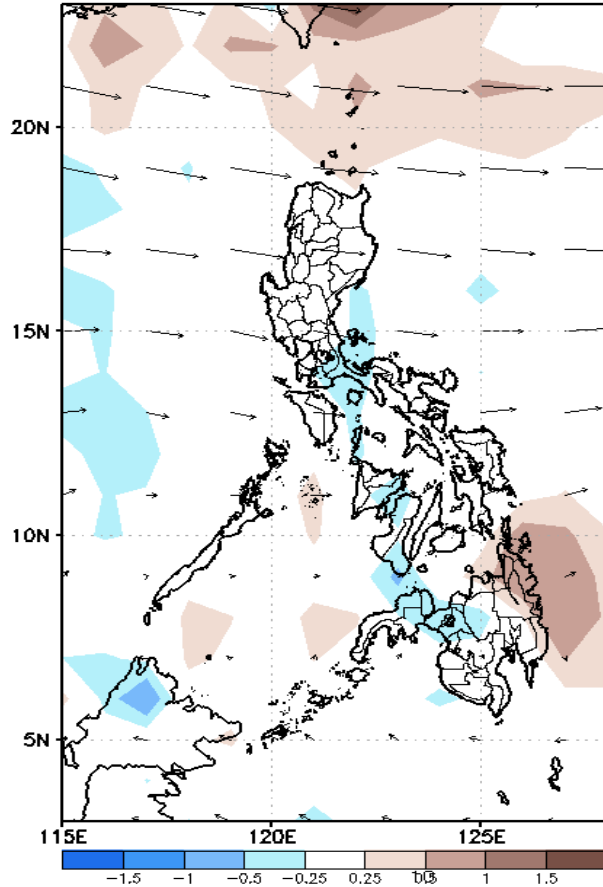
# Week 1 & Week 2 Forecast for the Philippines using GEFS Model



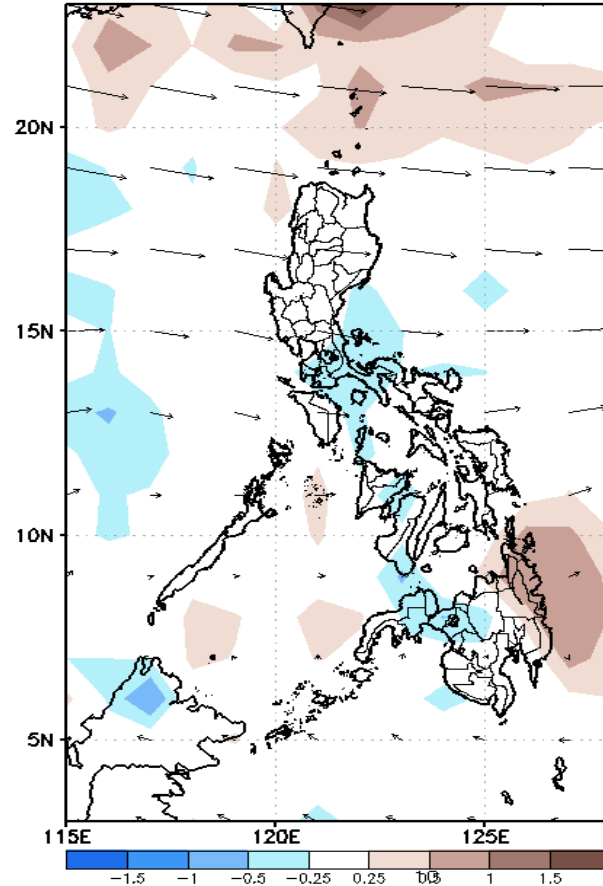
# GEFS Week-1 Forecasts: Divergence & Wind Anomaly

Week 1: Jan 10-16, 2022

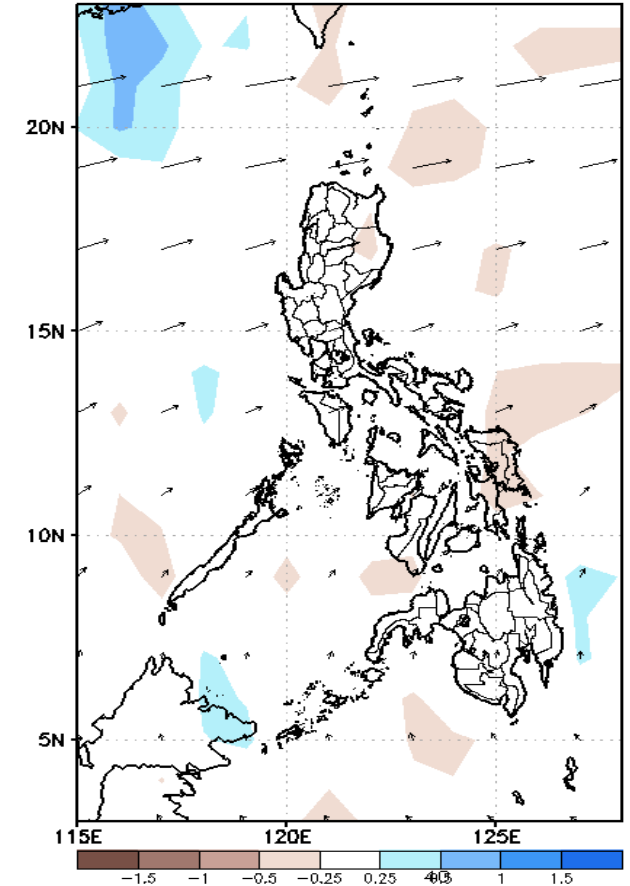
GEFS Week-1 850-hPa Divergence and Wind Anom:  
Valid: 20220110 - 20220116



GEFS Week-1 700-hPa Divergence and Wind Anom:  
Valid: 20220110 - 20220116



GEFS Week-1 200-hPa Divergence and Wind Anom:  
Valid: 20220110 - 20220116

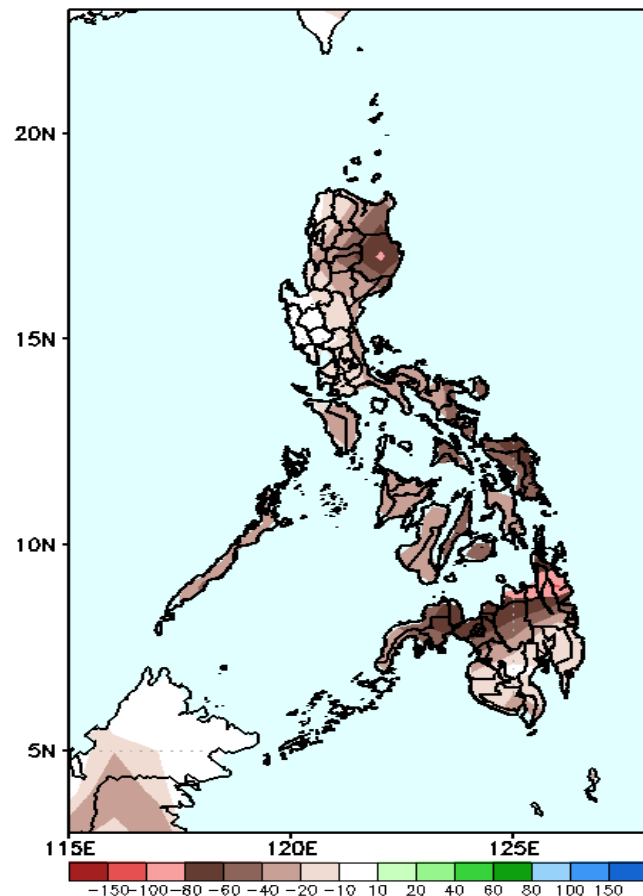


Upper and low level Divergence suggest less likelihood of precipitation in most parts of the country. Northeast Monsoon affecting eastern sections of Luzon while Easterlies affecting the rest of the country during the forecast period.

# Precipitation Anomaly and Exceedance Probability > 25/50 mm

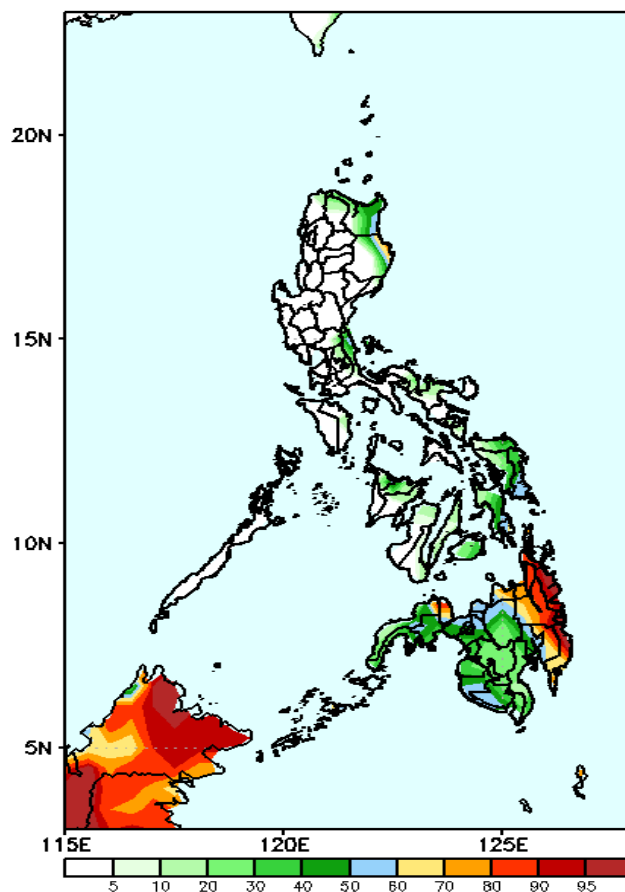
## Week 1: Jan 10-16, 2022

GEFS Week-1 Precip Anomaly  
Valid: 20220110 - 20220116



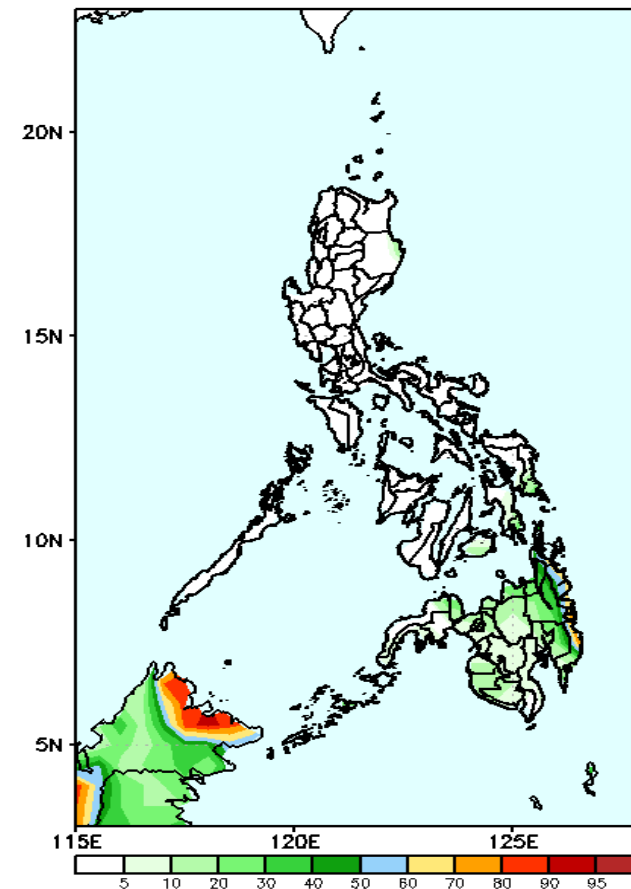
Rainfall deficit of 40-100mm is expected in most parts of the country (up to 100mm in Isabela and CARAGA Region) during the forecast period.

GEFS Week-1 Exceedance Prob. > 25mm  
Valid: 20220110 - 20220116



High probability of rainfall to exceed 25mm in Misamis Occidental and in the eastern parts of Mindanao while less likely for the rest of the county during the forecast period.

GEFS Week-1 Exceedance Prob. > 50mm  
Valid: 20220110 - 20220116

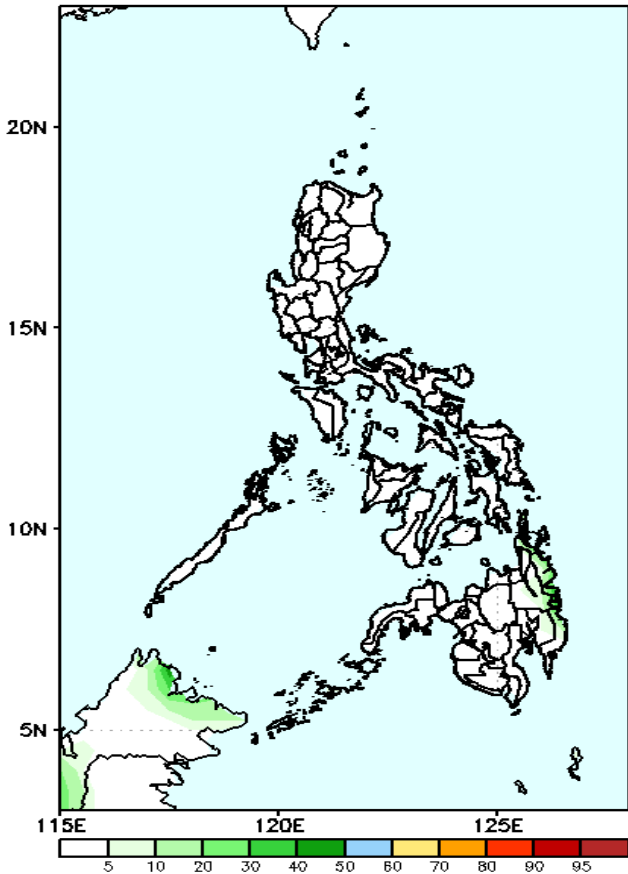


Less probability of rainfall to exceed 50mm in most parts of the country is expected during the forecast period.

# Exceedance Probability > 100/150/200 mm

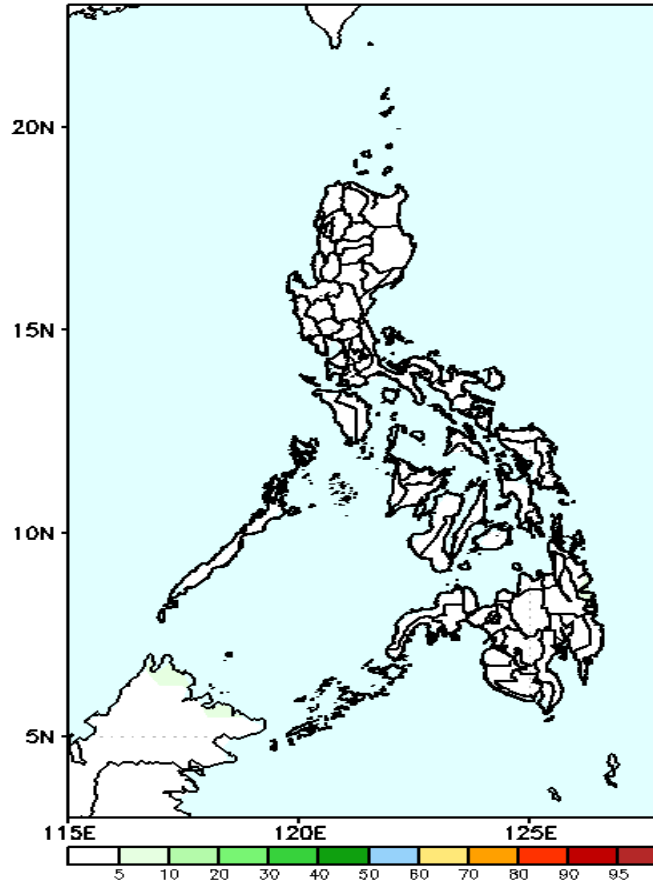
## Week 1: Jan 10-16, 2022

GEFS Week-1 Exceedance Prob. > 100mm  
Valid: 20220110 - 20220116



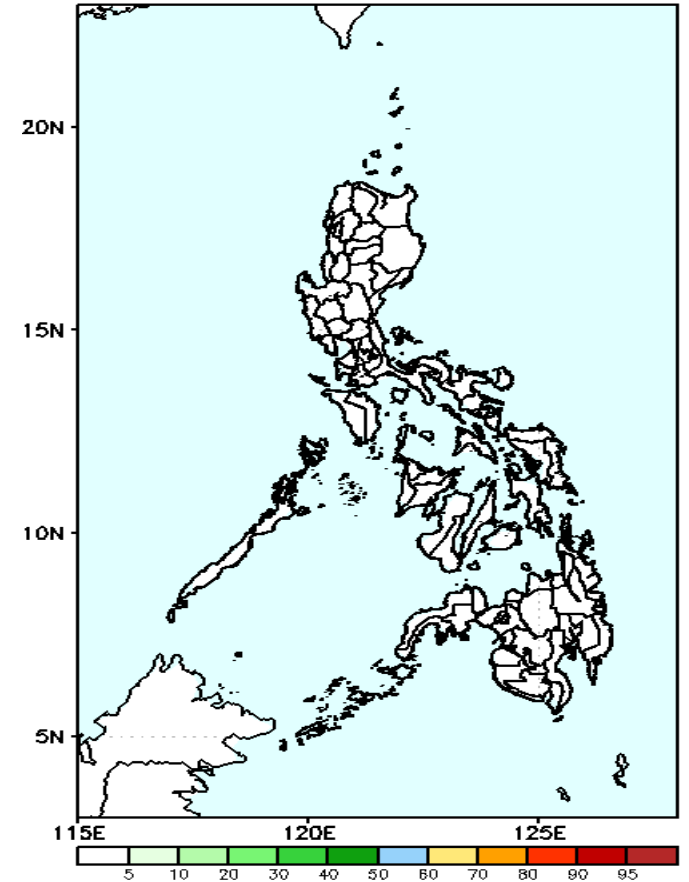
Less probability of rainfall to exceed 100mm in most parts of the country is expected during the forecast period.

GEFS Week-1 Exceedance Prob. > 150mm  
Valid: 20220110 - 20220116



Less probability of rainfall to exceed 150mm in most parts of the country is expected during the forecast period.

GEFS Week-1 Exceedance Prob. > 200mm  
Valid: 20220110 - 20220116



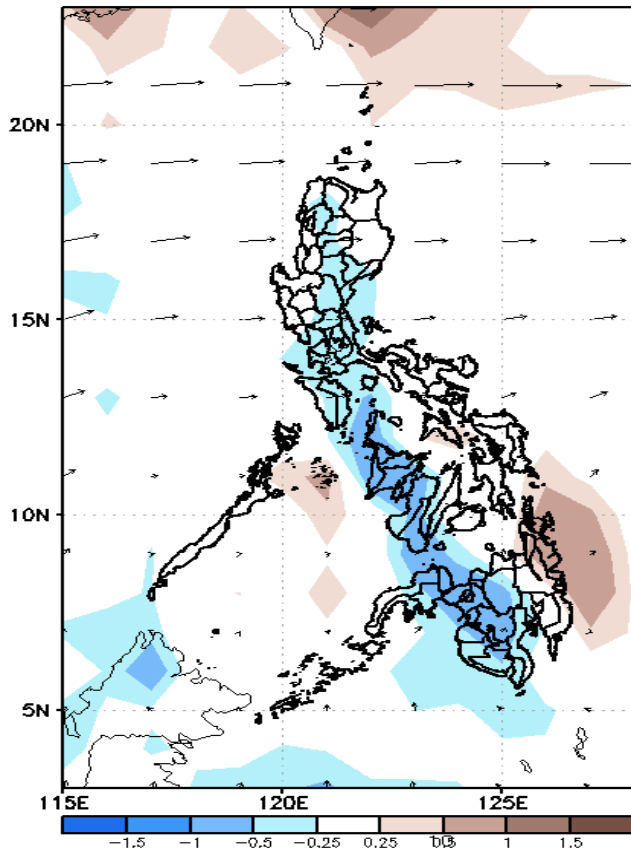
Less probability of rainfall to exceed 200mm in most parts of the country is expected during the forecast period.



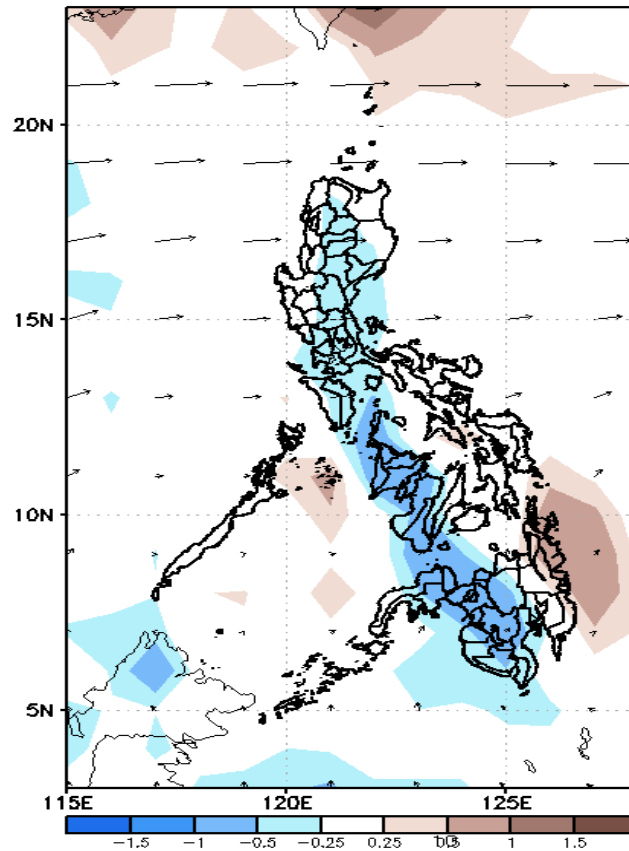
# GEFS Week-2 Forecasts: Divergence & Wind Anomaly

Week 2: Jan 17-23, 2022

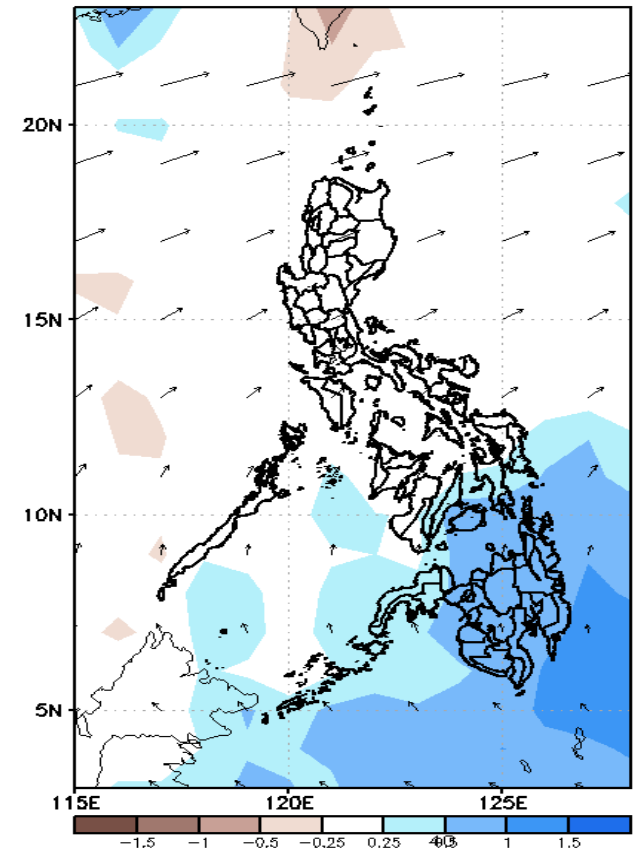
GEFS Week-2 850-hPa Divergence and Wind Anom  
Valid: 20220117 - 20220123



GEFS Week-2 700-hPa Divergence and Wind Anom  
Valid: 20220117 - 20220123



GEFS week-2 200-hPa Divergence and Wind Anom  
Valid: 20220117 - 20220123

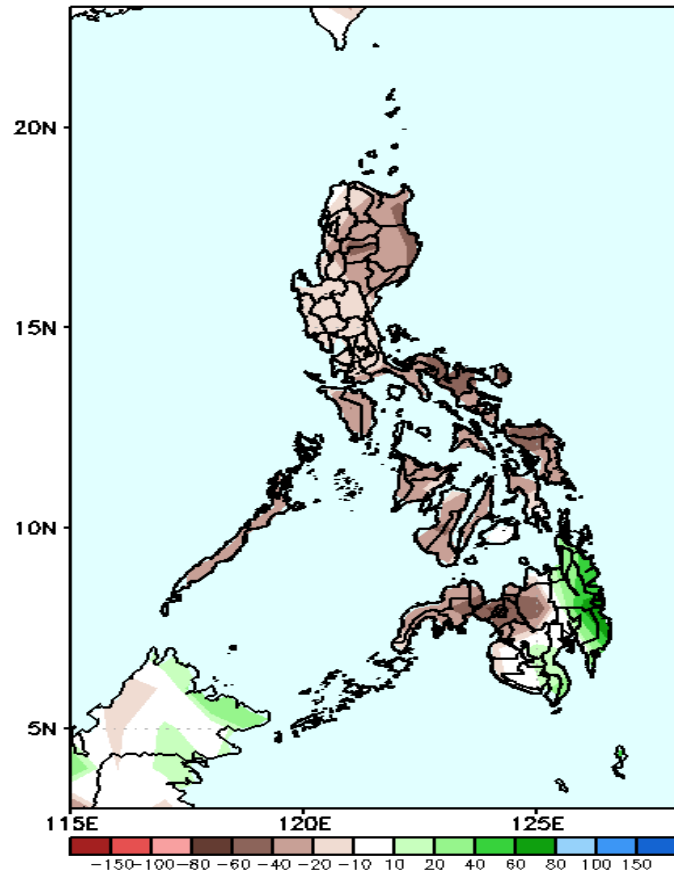


Upper and low level Divergence suggest less likelihood of precipitation in some parts of Visayas and most parts of Mindanao Northeast Monsoon affecting the eastern sections of Luzon and Visayas while Easterlies affecting the rest of the country during the forecast period..

# Precipitation Anomaly and Exceedance Probability > 25/50 mm

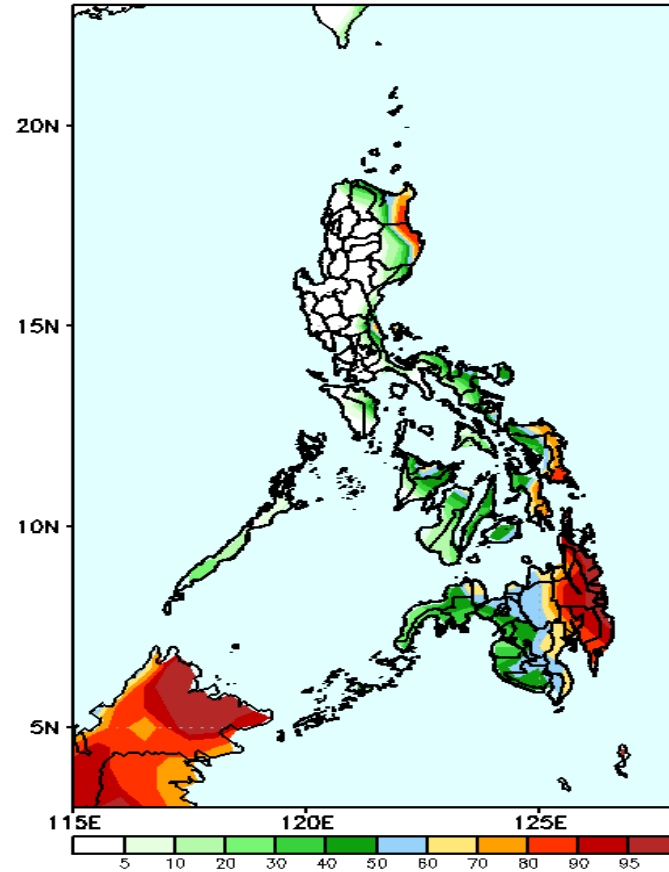
## Week 2: Jan 17-23, 2022

GEFS Week-2 Precip Anomaly  
Valid: 20220117 - 20220123



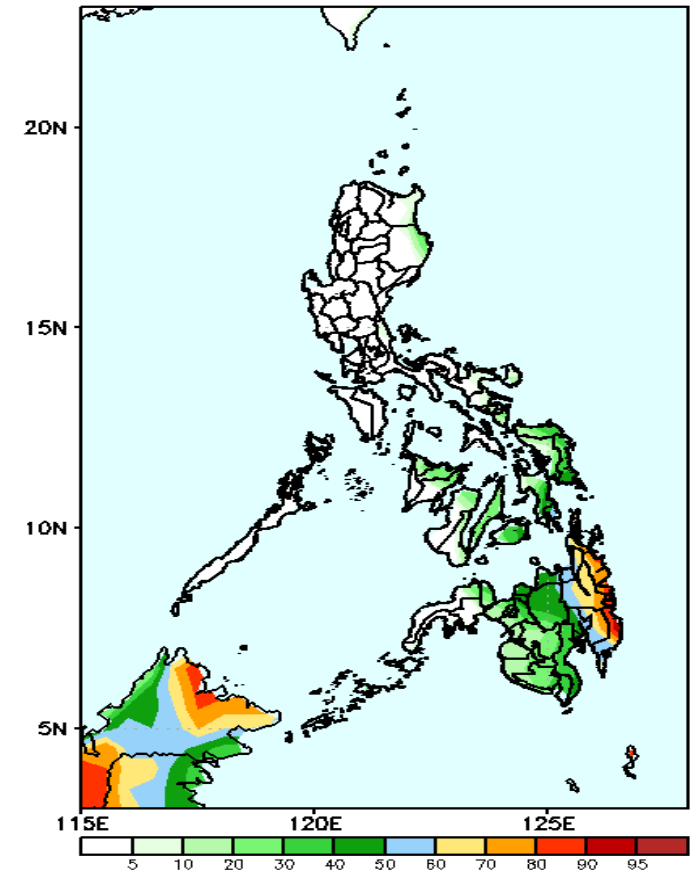
Rainfall deficit of 40-80mm is expected in most parts of the country except in the eastern parts of Mindanao during the forecast period

GEFS Week-2 Exceedance Prob. > 25mm  
Valid: 20220117 - 20220123



High probability of rainfall to exceed 25mm in the eastern parts of Cagayan & Isabela, most parts of Eastern Visayas, CARAGA & Davao Region while less likely for the rest of the county during the forecast period.

GEFS Week-2 Exceedance Prob. > 50mm  
Valid: 20220117 - 20220123

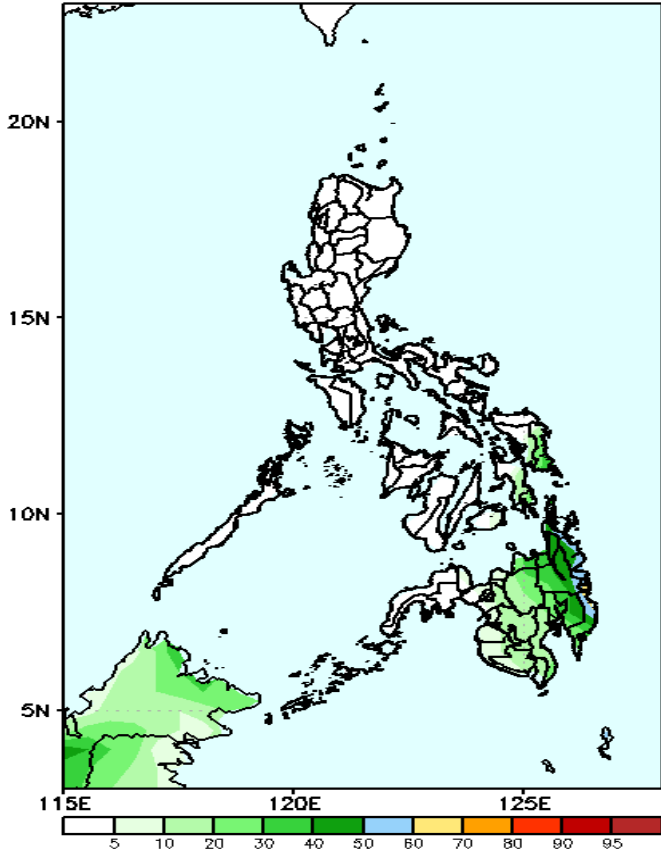


High probability of rainfall to exceed 50mm in the eastern parts of Mindanao while less likely for the rest of the county during the forecast period.

# Exceedance Probability > 100/150/200 mm

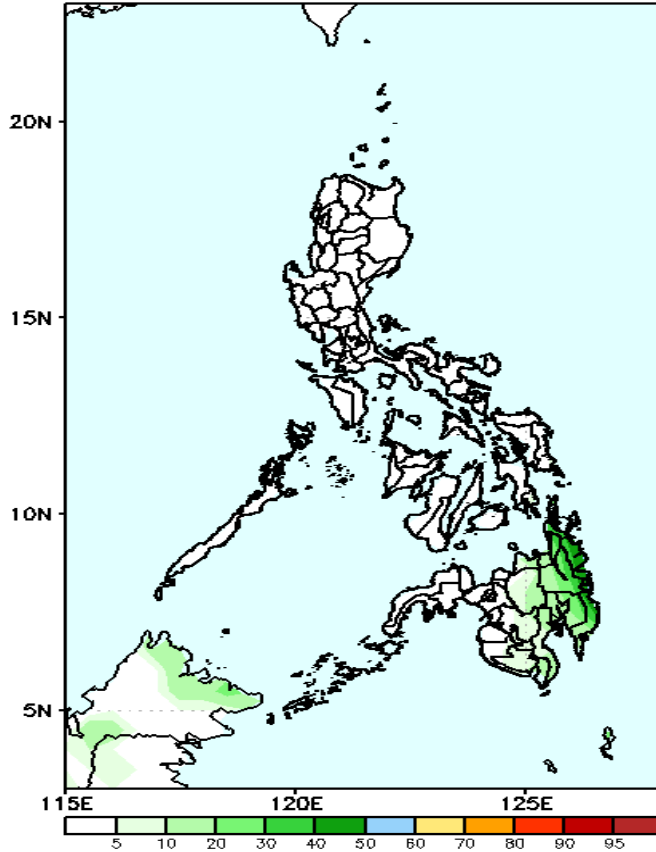
## Week 2: Jan 17-23, 2022

GEFS Week-2 Exceedance Prob. > 100mm  
Valid: 20220117 - 20220123



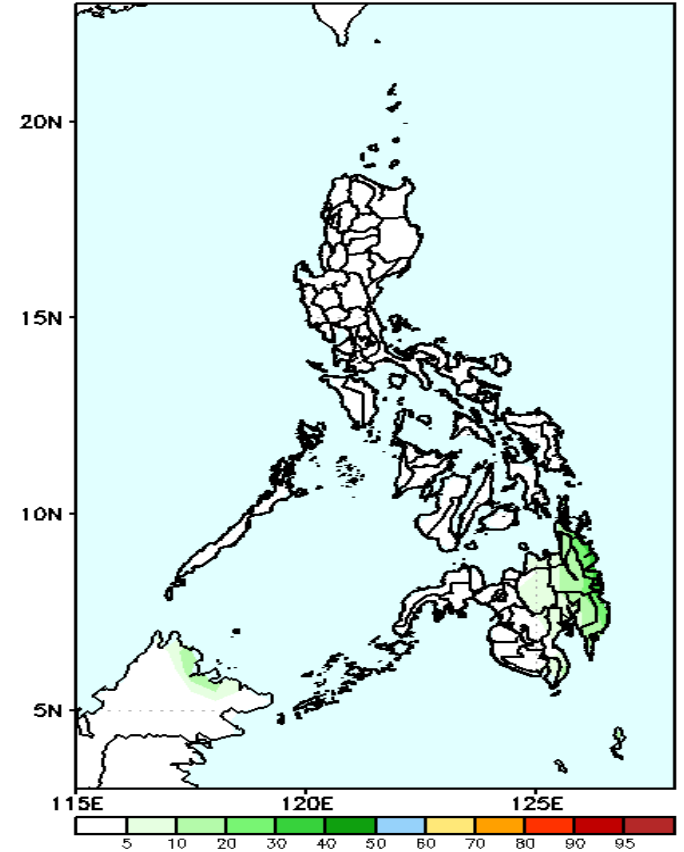
Less probability of rainfall to exceed 100mm in most parts of the country is expected during the forecast period.

GEFS Week-2 Exceedance Prob. > 150mm  
Valid: 20220117 - 20220123



Less probability of rainfall to exceed 150mm in most parts of the country is expected during the forecast period.

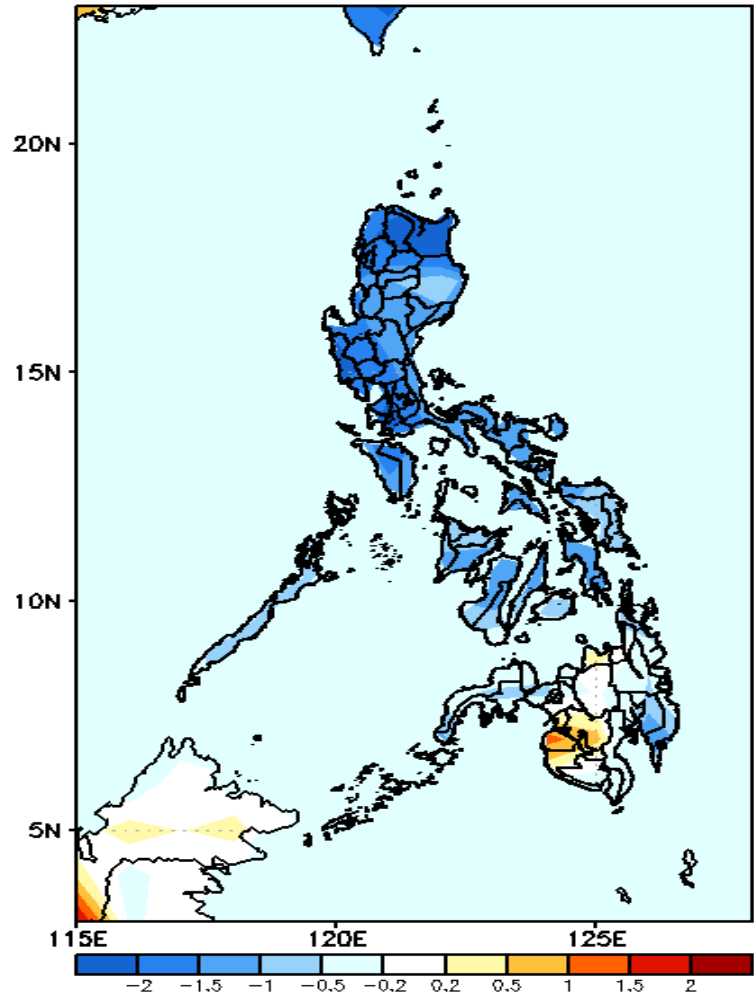
GEFS Week-2 Exceedance Prob. > 200mm  
Valid: 20220117 - 20220123



Less probability of rainfall to exceed 200mm in most parts of the country is expected during the forecast period.

# GEFS Week-1 & 2 Forecasts: T2m Anomaly

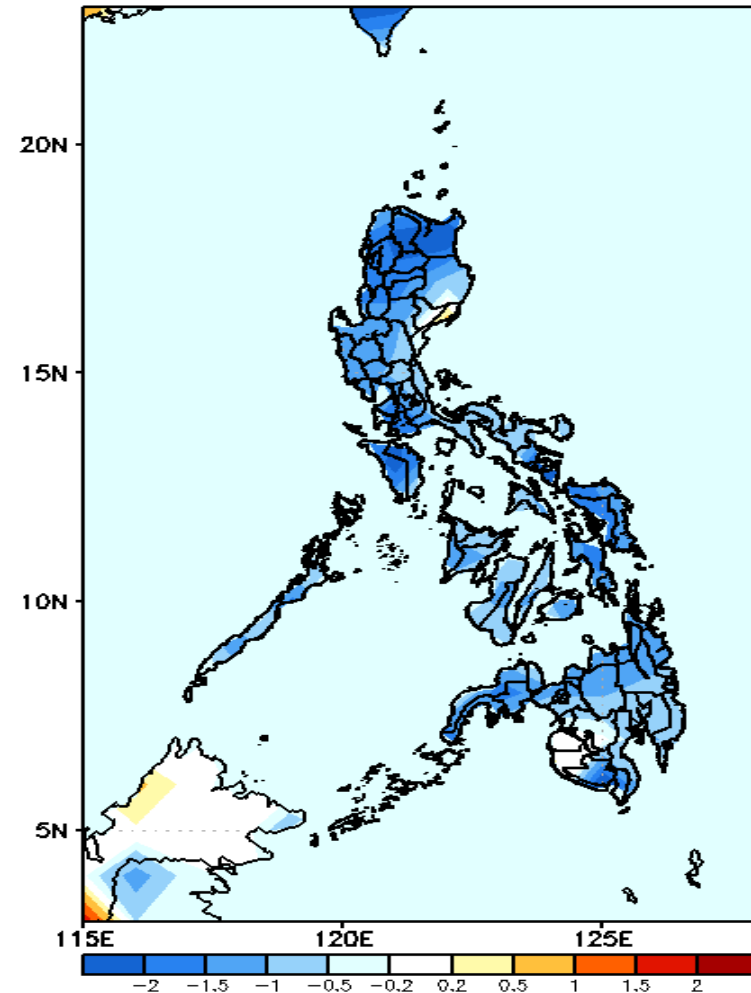
GEFS Week-1 T2m Anomaly  
Valid: 20220110 - 20220116



## 2m Temperature Week 1: Jan 10-16, 2022

Cooler than average surface air temperature will likely experience in most parts of Luzon & Visayas while Average to slightly warmer in Mindanao during the forecast period.

GEFS Week-2 T2m Anomaly  
Valid: 20220117 - 20220123



## 2m Temperature Week 2: Jan 17-23, 2022

Cooler than average surface air temperature will likely experience in most parts of the country during the forecast period.

