



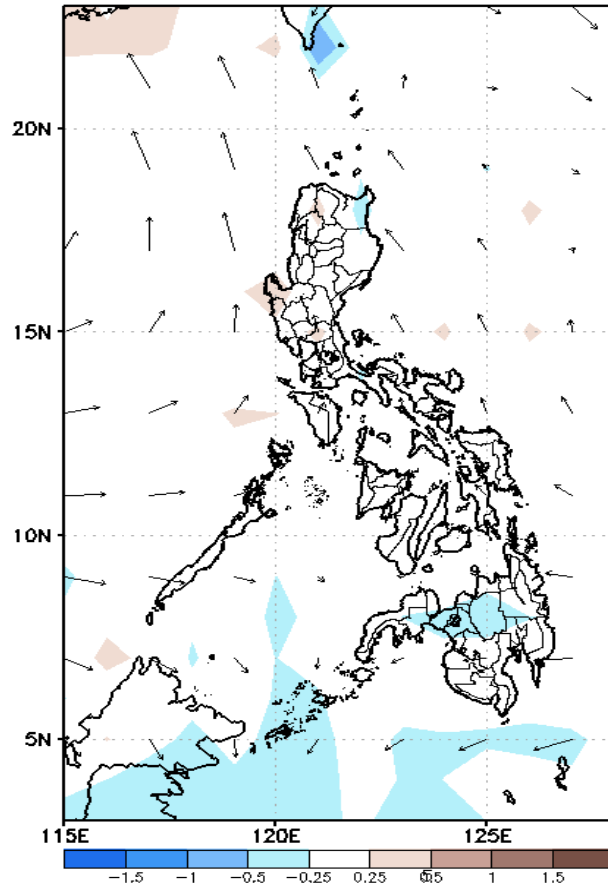
Week 1 & Week 2 Forecast for the Philippines using GEFS Model



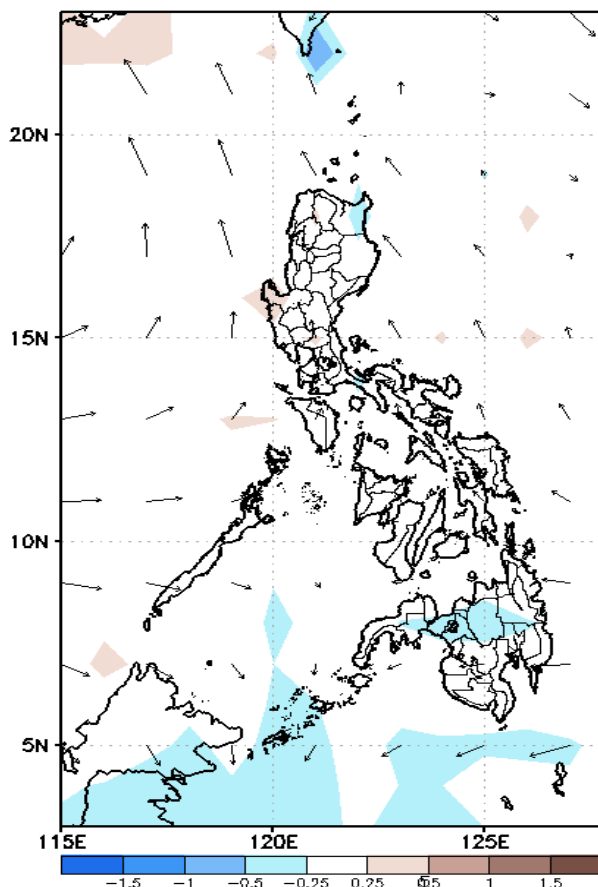
GEFS Week-1 Forecasts: Divergence & Wind Anomaly

Week 1: June 10-16, 2021

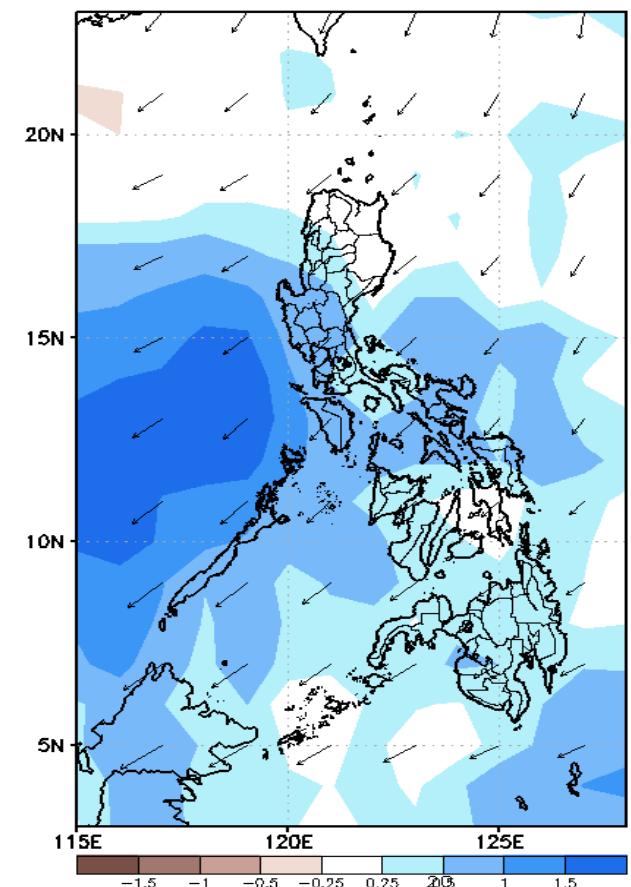
GEFS Week-1 850-hPa Divergence and Wind Anomaly
Valid: 20210610 - 20210616



GEFS Week-1 700-hPa Divergence and Wind Anomaly
Valid: 20210610 - 20210616



GEFS Week-1 200-hPa Divergence and Wind Anomaly
Valid: 20210610 - 20210616

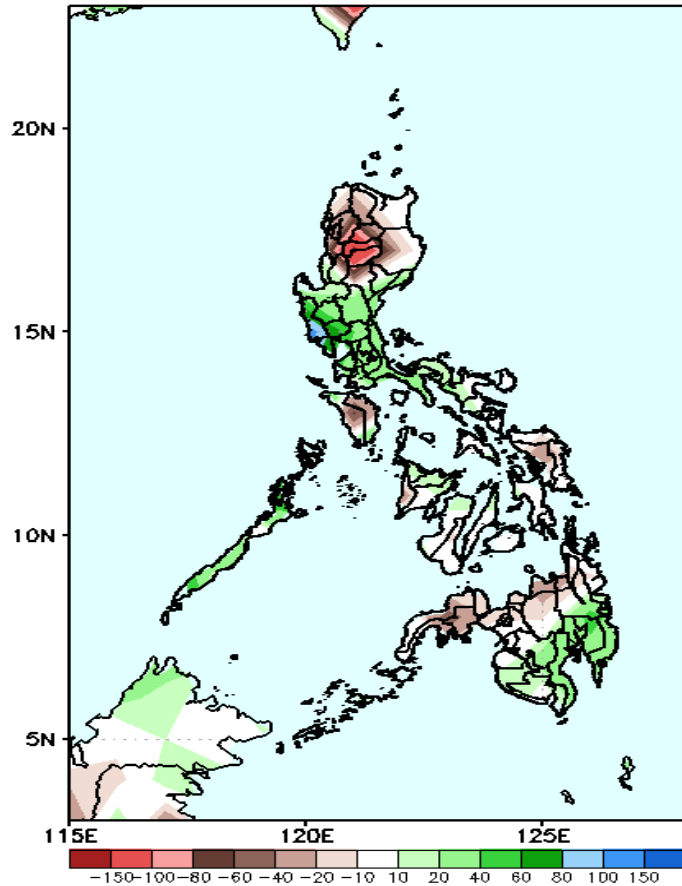


Upper and low level Divergence suggest likelihood of precipitation in most parts of the country except parts of Northern Luzon. Southwest monsoon affecting the western sections of Luzon while Easterlies affecting the rest of the country. Attributing to warmer temperature and higher heat index and humid environment (especially in the western section of the country) during the forecast period.

Precipitation Anomaly and Exceedance Probability > 25/50 mm

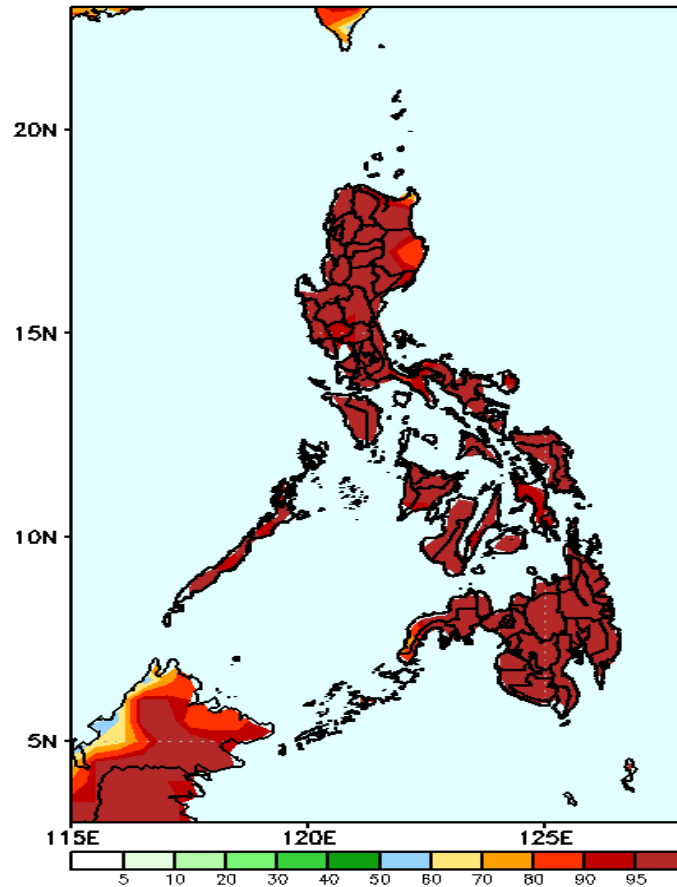
Week 1: June 10-16, 2021

GEFS Week-1 Precip Anomaly
Valid: 20210610 - 20210616



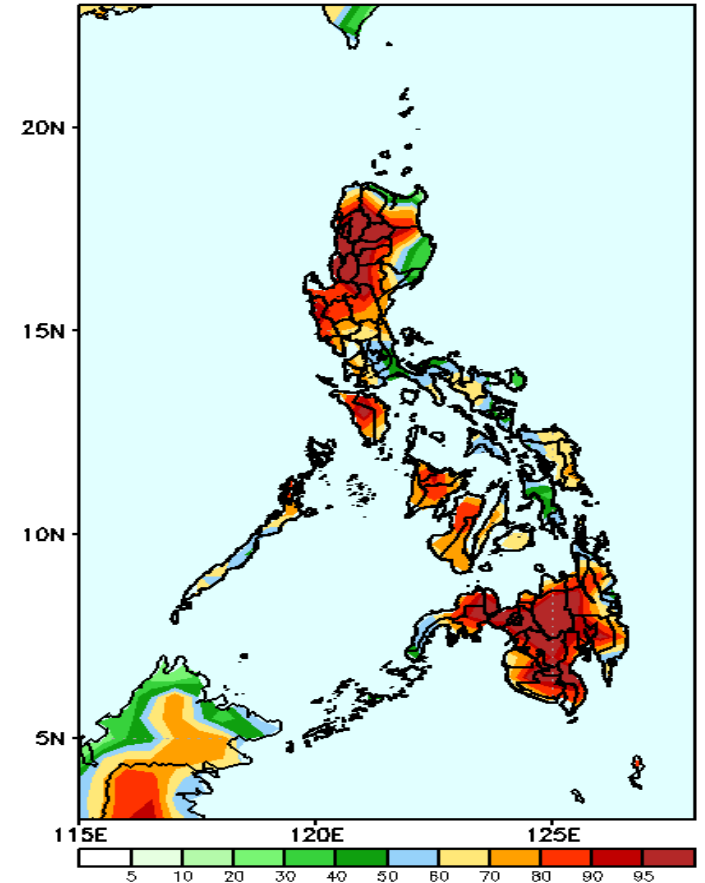
Rainfall deficit of up to 150mm is expected in Cordillera Region and 20-60mm in Visayas, northern Mindanao & Zamboanga Peninsula while 40-80mm increase of rainfall for the rest of the Luzon and Mindanao is more likely.

GEFS Week-1 Exceedance Prob. > 25mm
Valid: 20210610 - 20210616



High probability of rainfall to exceed 25mm in most parts of the country during the forecast period.

GEFS Week-1 Exceedance Prob. > 50mm
Valid: 20210610 - 20210616

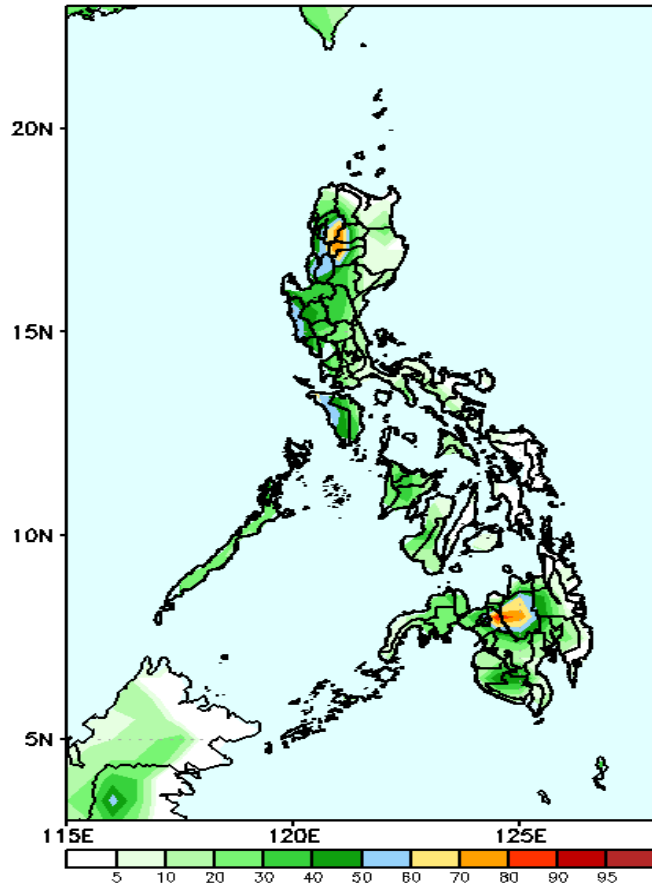


High probability of rainfall to exceed 50mm in most parts of the country except in eastern Isabela, Bicol Region and Central Visayas during the forecast period.

Exceedance Probability > 100/150/200 mm

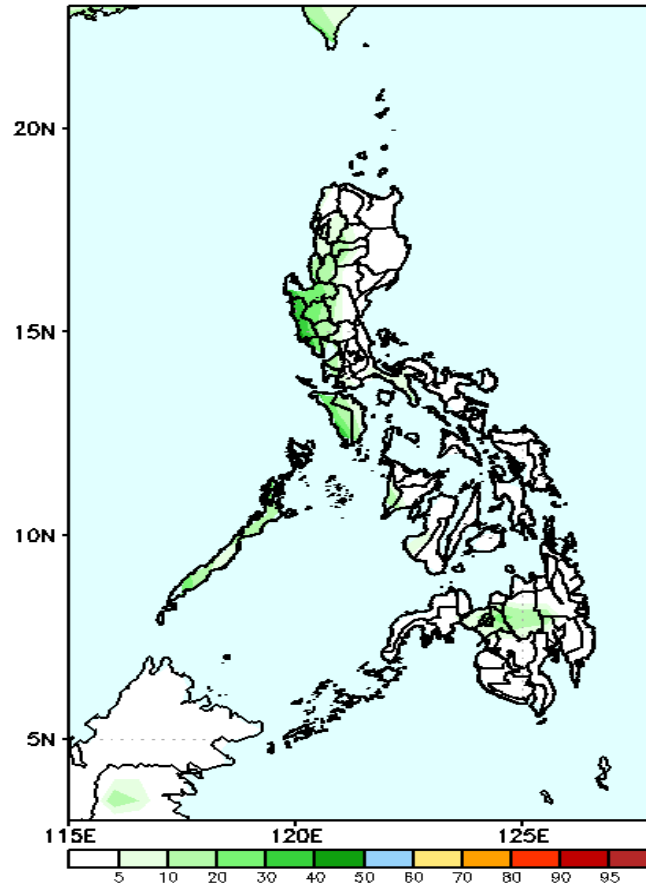
Week 1: June 10-16, 2021

GEFS Week-1 Exceedance Prob. > 100mm
Valid: 20210610 – 20210616



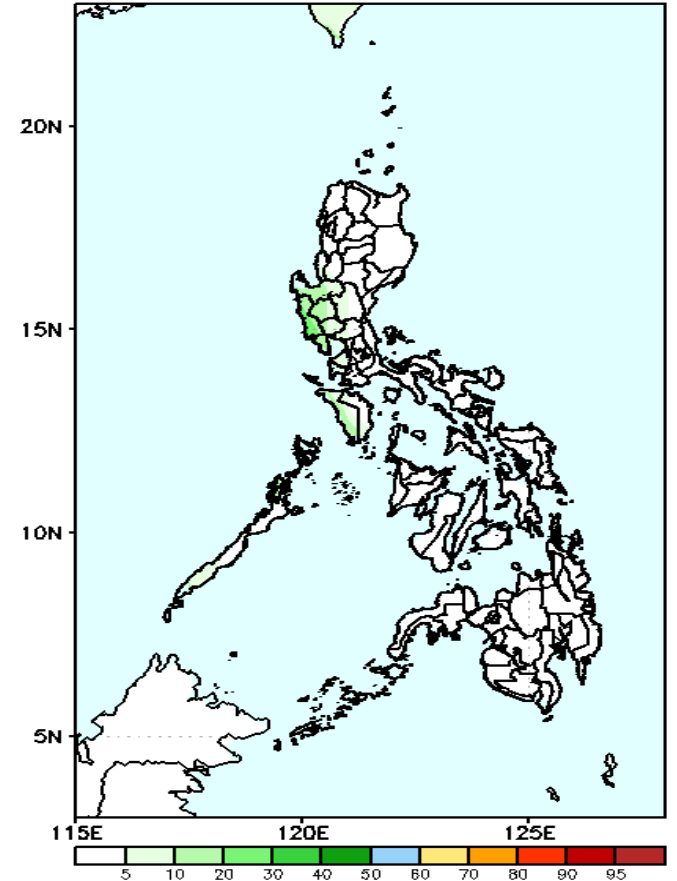
Less probability of rainfall to exceed 100mm in most parts of the country except in Abra, Kalinga, Mt. Province and Bukidnon where there is 60-90% probability during the forecast period.

GEFS Week-1 Exceedance Prob. > 150mm
Valid: 20210610 – 20210616



Less probability of rainfall to exceed 150mm in most parts of the country during the forecast period.

GEFS Week-1 Exceedance Prob. > 200mm
Valid: 20210610 – 20210616

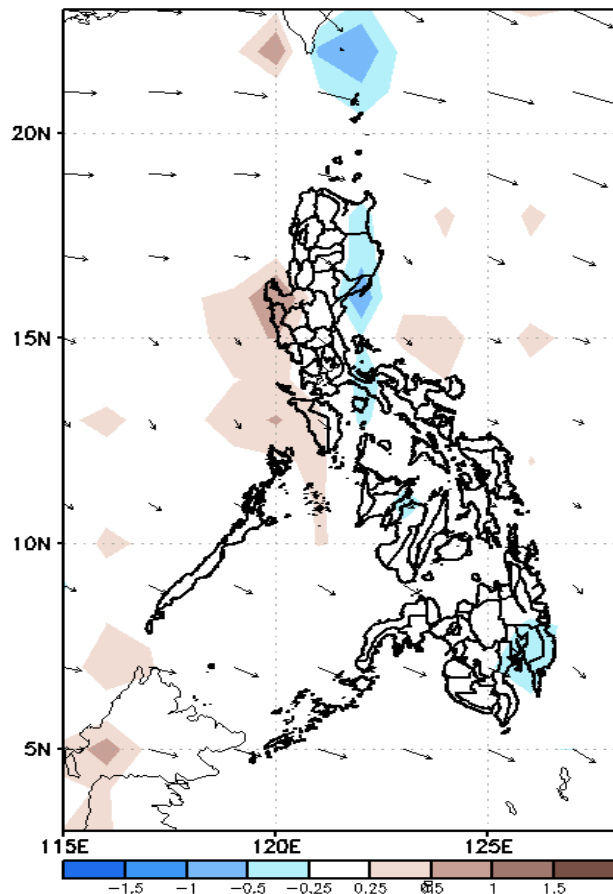


Less probability of rainfall to exceed 200mm in most parts of the country during the forecast period.

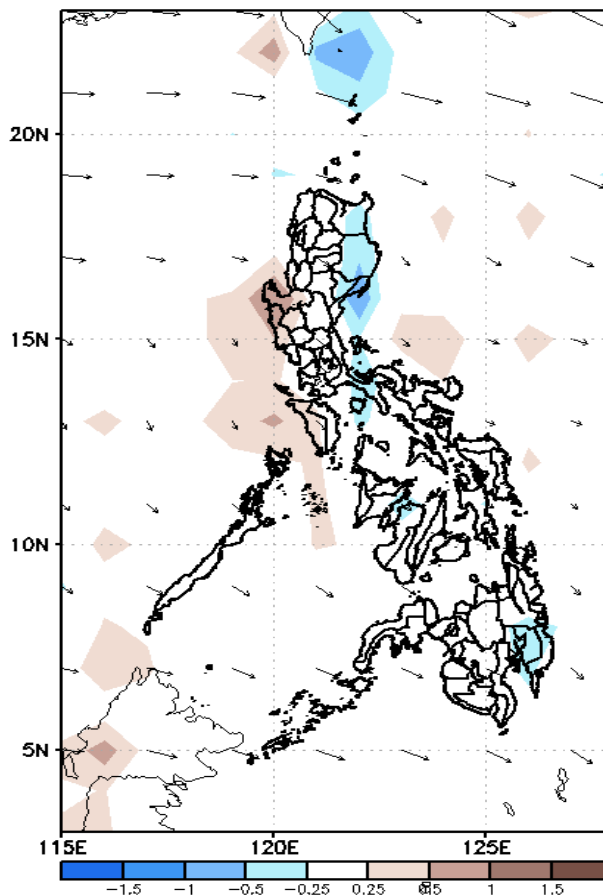
GEFS Week-2 Forecasts: Divergence & Wind Anomaly

Week 2: June 17-23, 2021

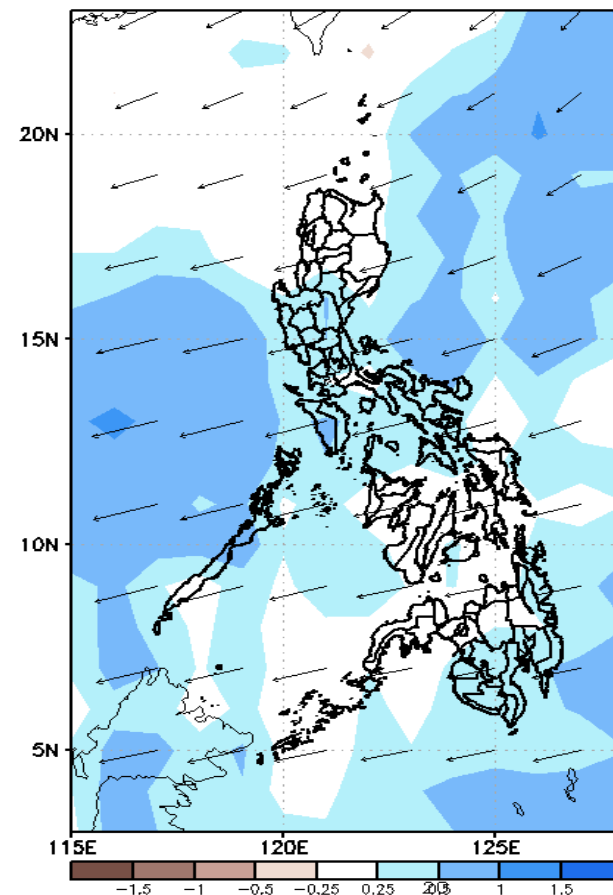
GEFS Week-2 850-hPa Divergence and Wind Anom.
Valid: 20210617 - 20210623



GEFS Week-2 700-hPa Divergence and Wind Anom.
Valid: 20210617 - 20210623



GEFS week-2 200-hPa Divergence and Wind Anom.
Valid: 20210617 - 20210623

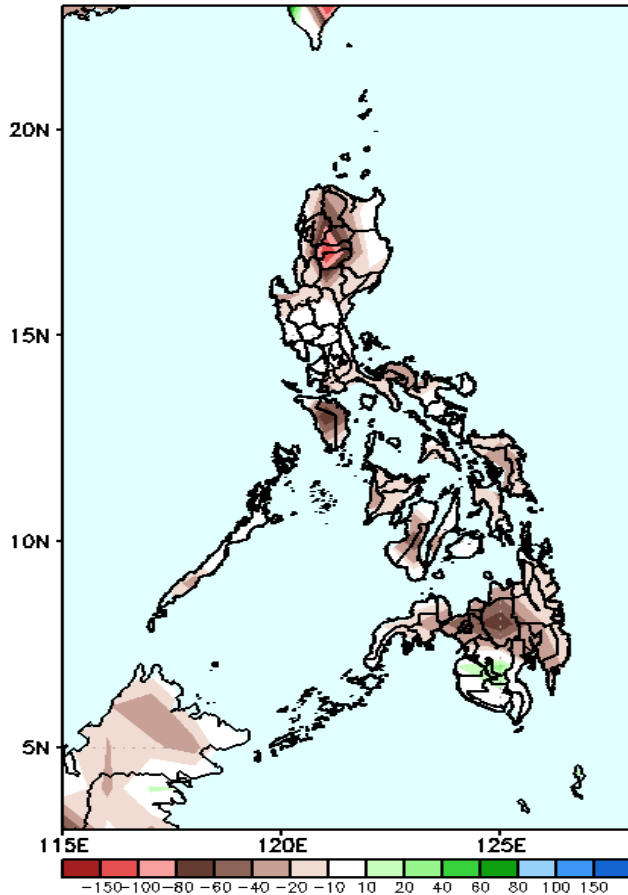


Upper and low level Divergence suggest likelihood of precipitation in most parts of the country except parts of Northern Luzon. Southwest monsoon affecting the western sections of Luzon and Visayas while Easterlies affecting the rest of the country. Attributing to warmer temperature and higher heat index and humid environment (especially in the western sections of the country) during the forecast period.

Precipitation Anomaly and Exceedance Probability > 25/50 mm

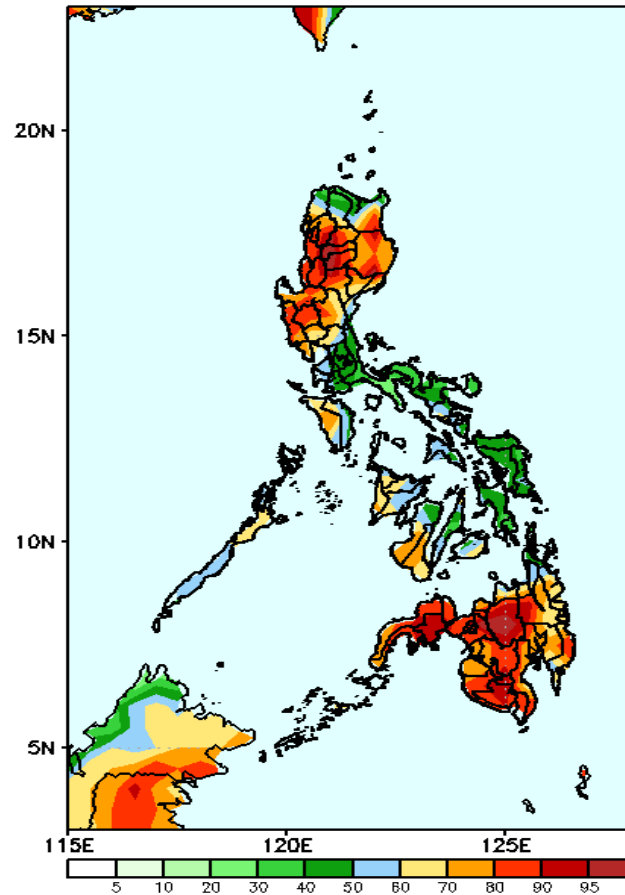
Week 2: June 17-23, 2021

GEFS Week-2 Precip Anomaly
Valid: 20210617 - 20210623



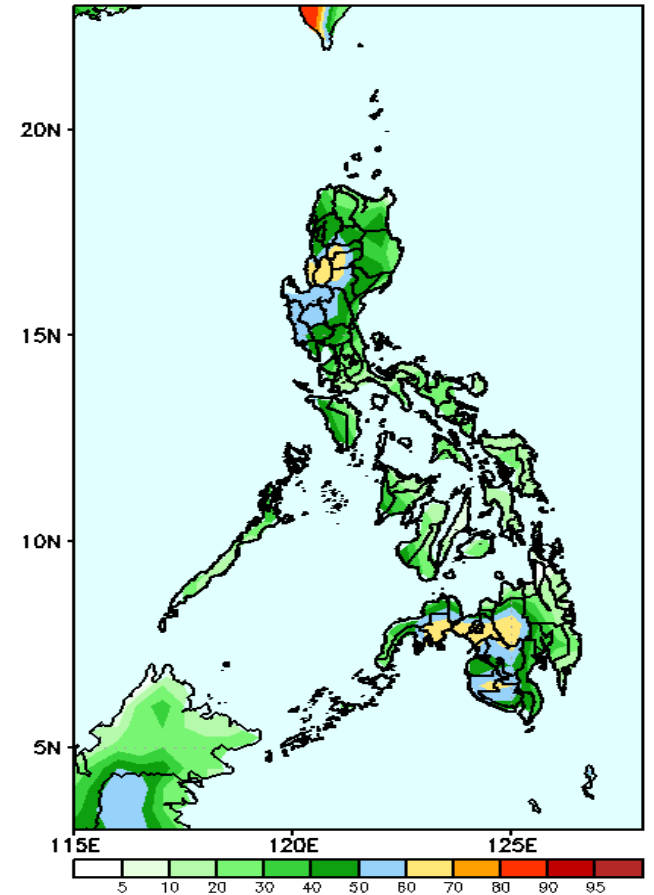
Rainfall deficit of 40-100mm is expected in most parts of the country during the forecast period.

GEFS Week-2 Exceedance Prob. > 25mm
Valid: 20210617 - 20210623



High probability of rainfall to exceed 25mm in most parts of Luzon, western Visayas and most parts of Mindanao while less likely in Southern Luzon and rest of Visayas during the forecast period.

GEFS Week-2 Exceedance Prob. > 50mm
Valid: 20210617 - 20210623

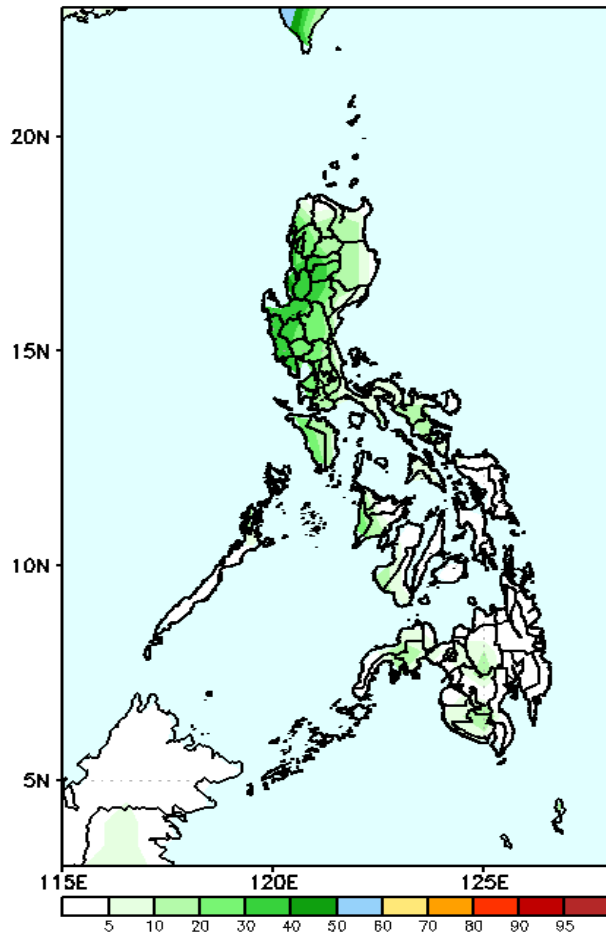


Less probability of rainfall to exceed 50mm in most parts of the country except in Ilocos Sur, Abra, Kalinga, Bukidnon and Lanao del Sur where there is 60-80% chance during the forecast period.

Exceedance Probability > 100/150/200 mm

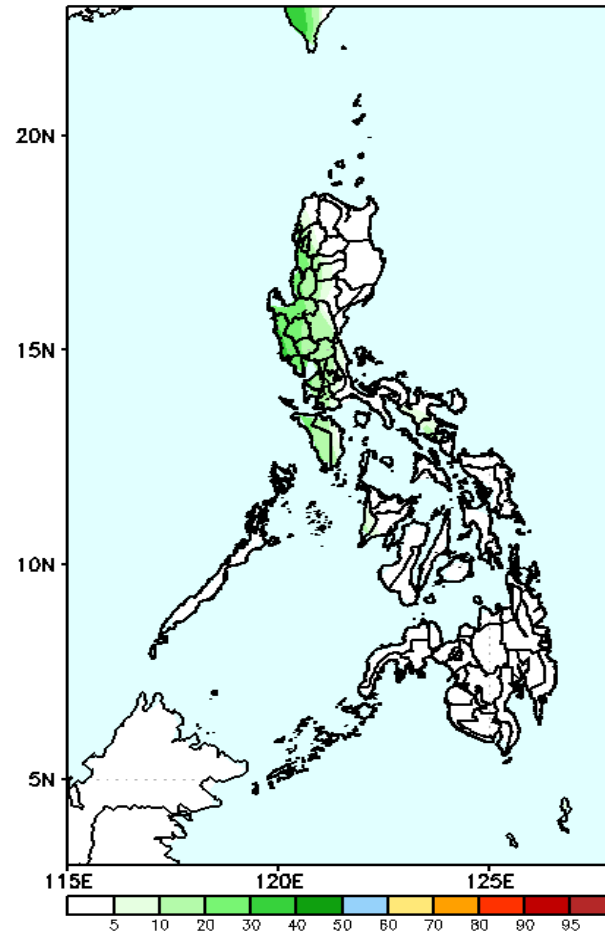
Week 2: June 17-23, 2021

GEFS Week-2 Exceedance Prob. > 100mm
Valid: 20210617 - 20210623



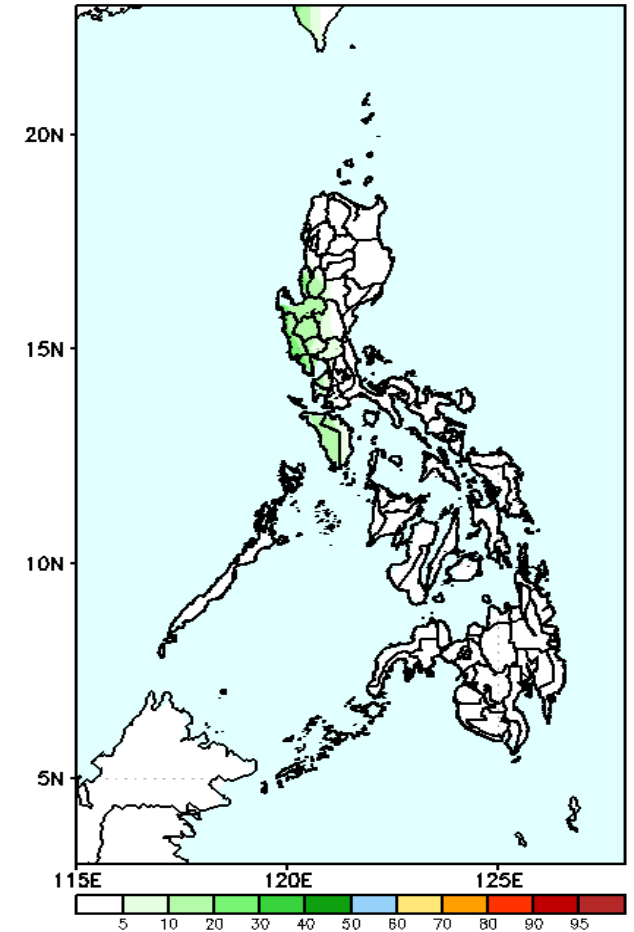
Less probability of rainfall to exceed 100mm in most parts of the country during the forecast period.

GEFS Week-2 Exceedance Prob. > 150mm
Valid: 20210617 - 20210623



Less probability of rainfall to exceed 150mm in most parts of the country during the forecast period.

GEFS Week-2 Exceedance Prob. > 200mm
Valid: 20210617 - 20210623

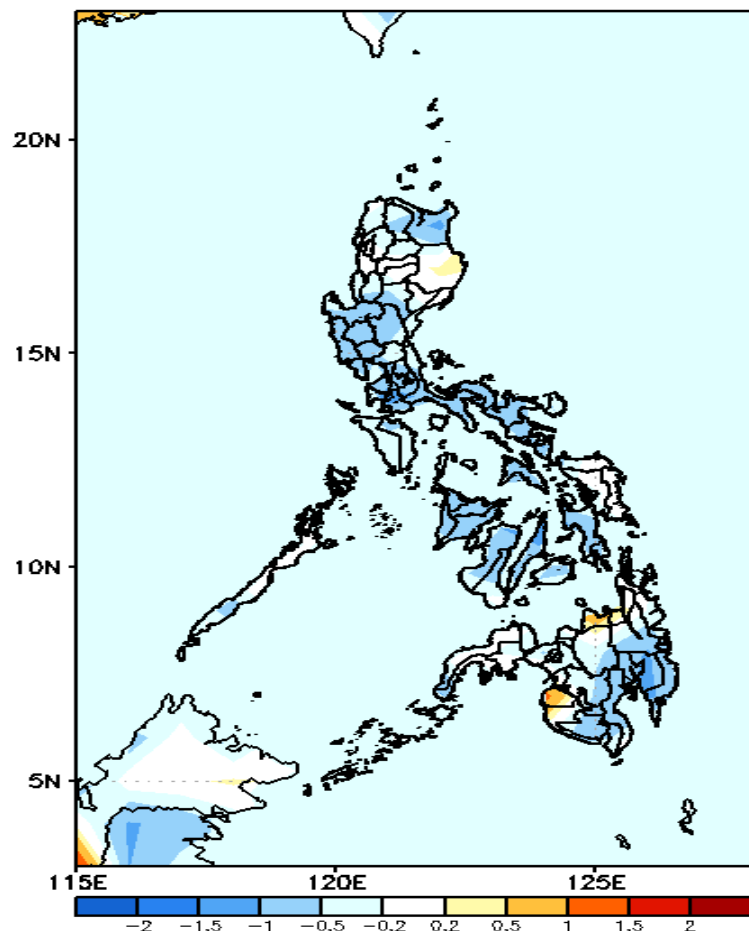


Less probability of rainfall to exceed 200mm in most parts of the country during the forecast period.



GEFS Week-1 & 2 Forecasts: T2m Anomaly

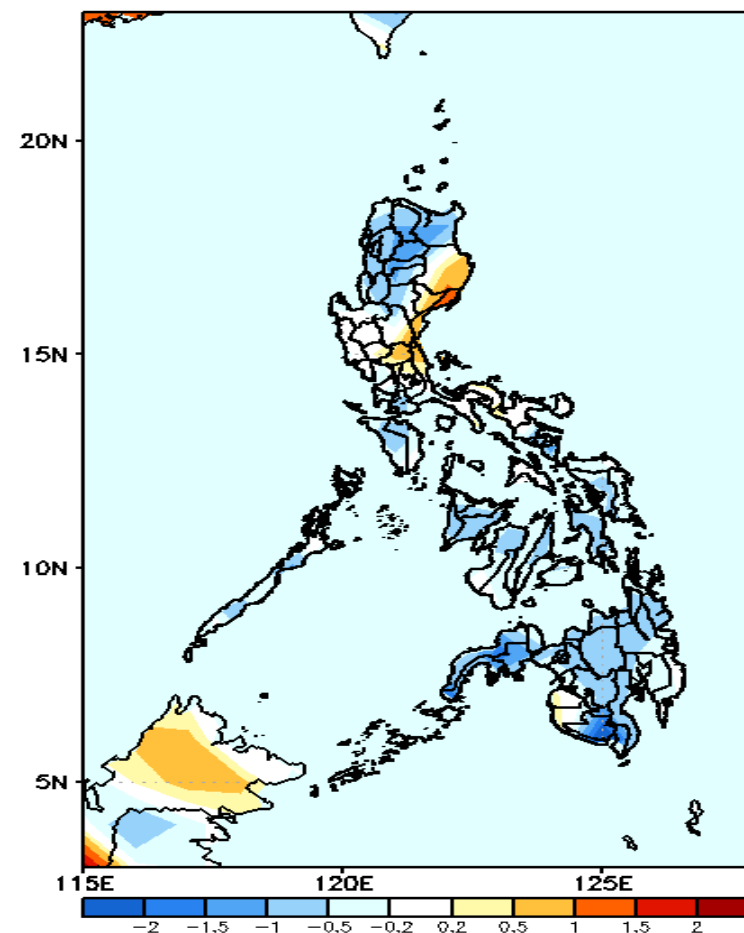
GEFS Week-1 T2m Anomaly
Valid: 20210610 – 20210616



2m Temperature Week 1: June 10-16, 2021

Average to slightly cooler than average surface air temperature will likely experience in most parts the country during the forecast period.

GEFS Week-2 T2m Anomaly
Valid: 20210617 – 20210623



2m Temperature Week 2: June 17-23, 2021

Slightly cooler to cooler than average surface air temperature will likely experience in most parts of the country except in eastern parts of Cagayan Valley during the forecast period.