



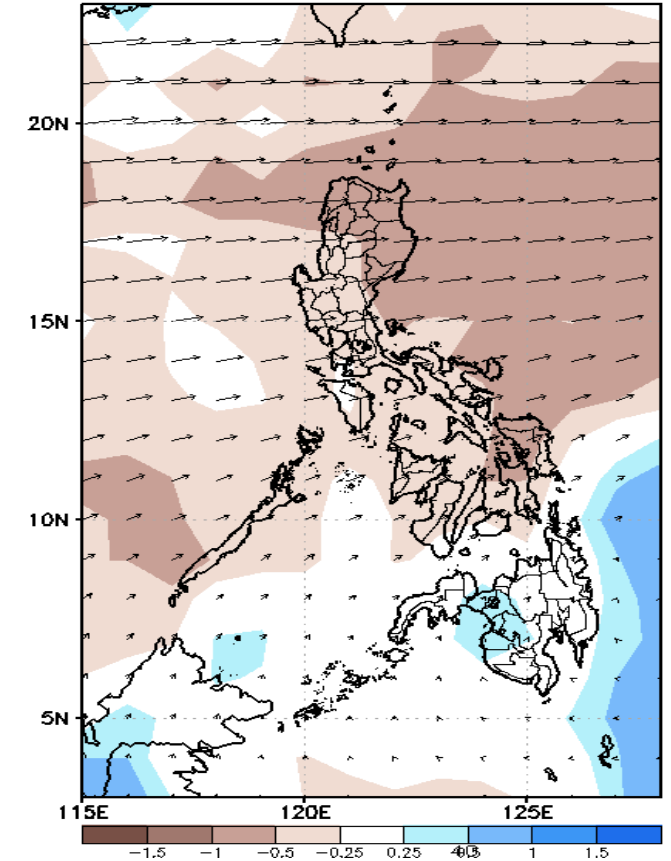
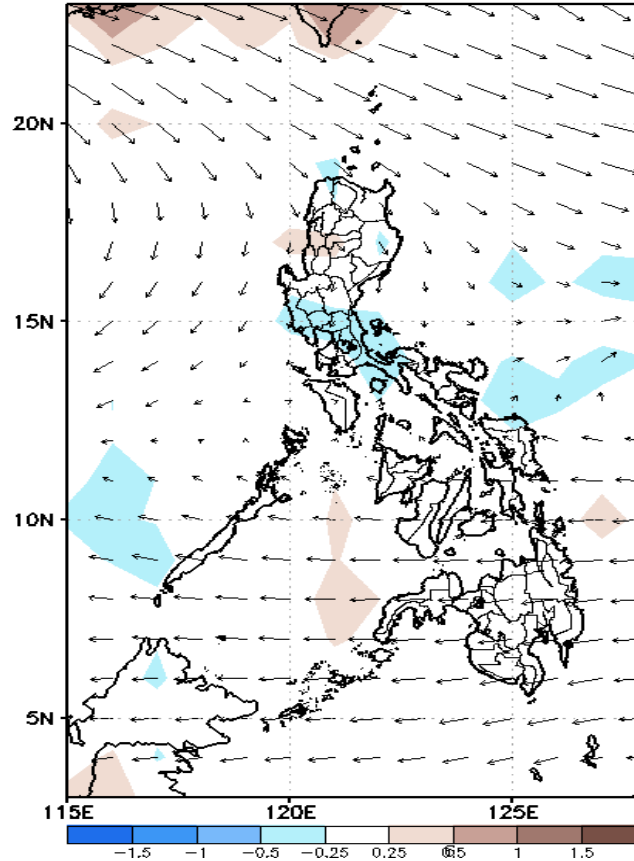
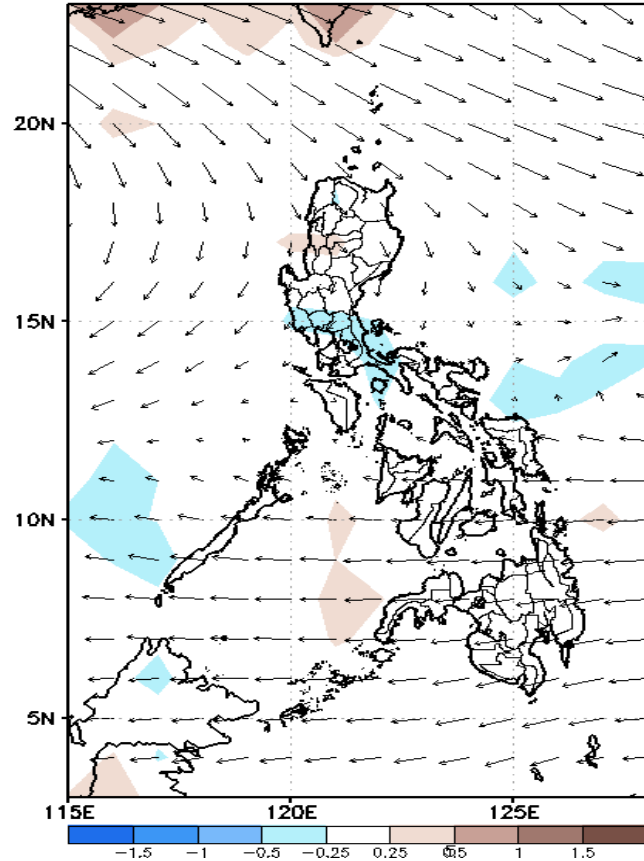
Week 1 & Week 2 Forecast for the Philippines using GEFS Model



GEFS Week-1 Forecasts: Wind Anomaly Forecast

Week 1: Mar 10-16, 2023

GEFS Week-1 850-hPa Divergence and Wind Anom
Valid: 20230310 - 20230316

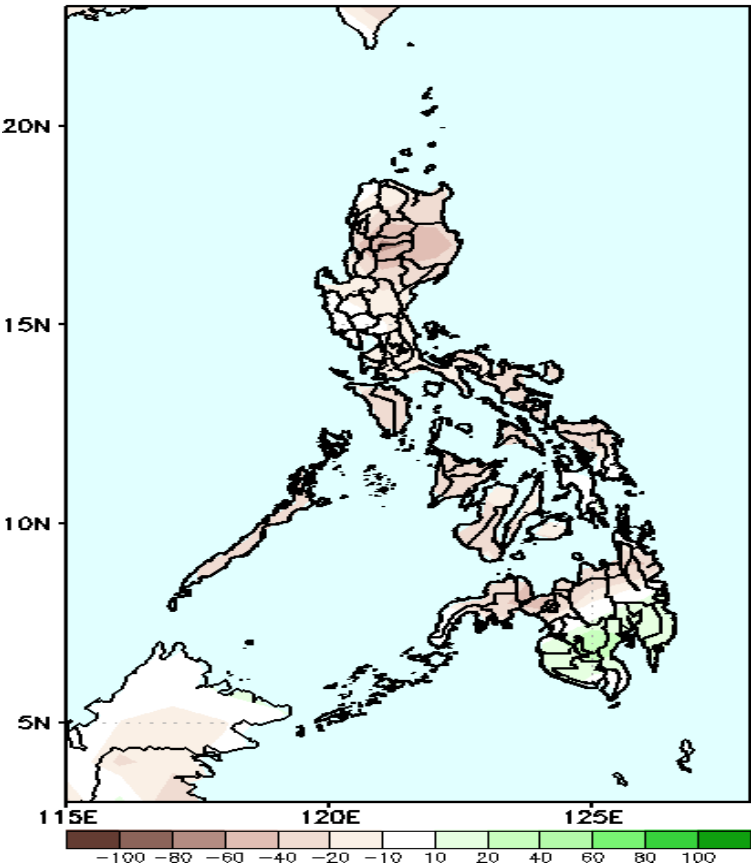


Easterlies is forecasted to affect most parts of the country during the forecast period.

Precipitation Anomaly and Exceedance Probability > 25/50 mm

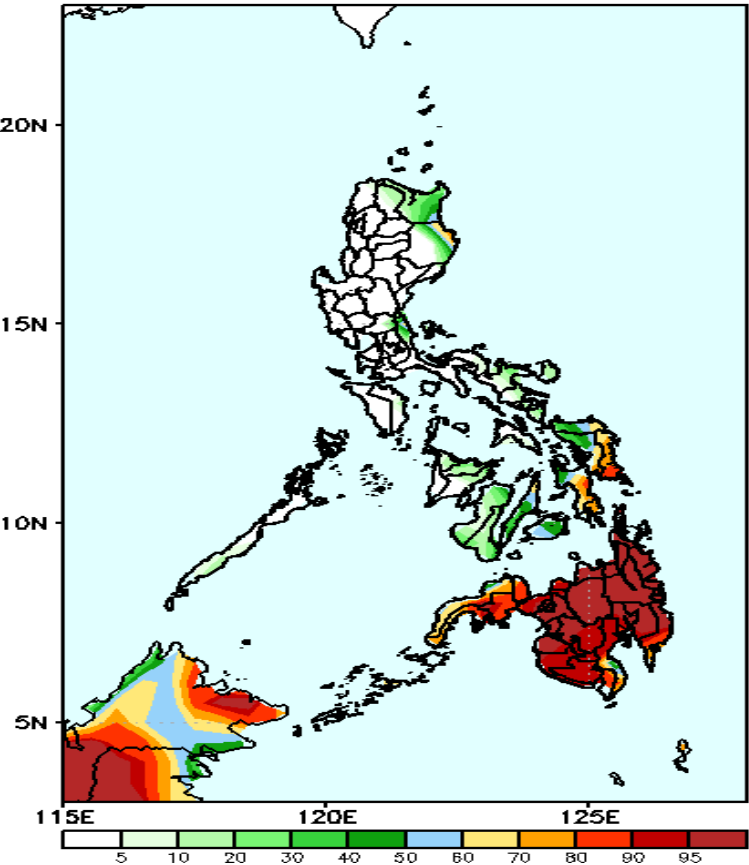
Week 1: Mar 10-16, 2023

GEFS Week-1 Precip Anomaly
Valid: 20230310 – 20230316



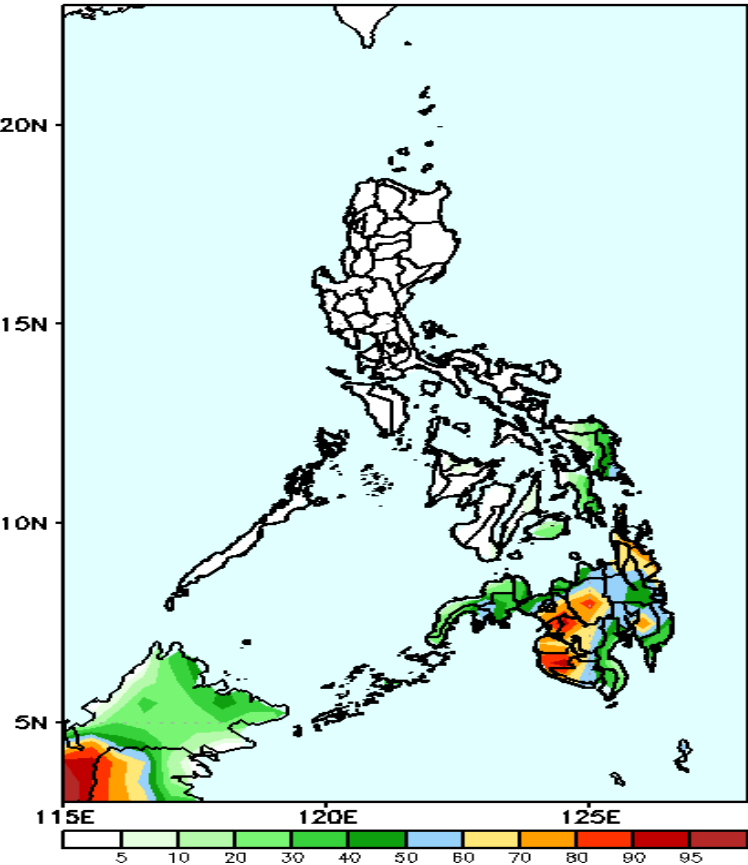
Rainfall deficit of 20-60mm is expected in most parts of the country during the forecast period.

GEFS Week-1 Exceedance Prob. > 25mm
Valid: 20230310 – 20230316



High to a very high probability of rainfall exceeding 25mm over Mindanao and portions of Isabela, Cagayan, and Eastern Visayas while low chance over the rest of the country.

GEFS Week-1 Exceedance Prob. > 50mm
Valid: 20230310 – 20230316

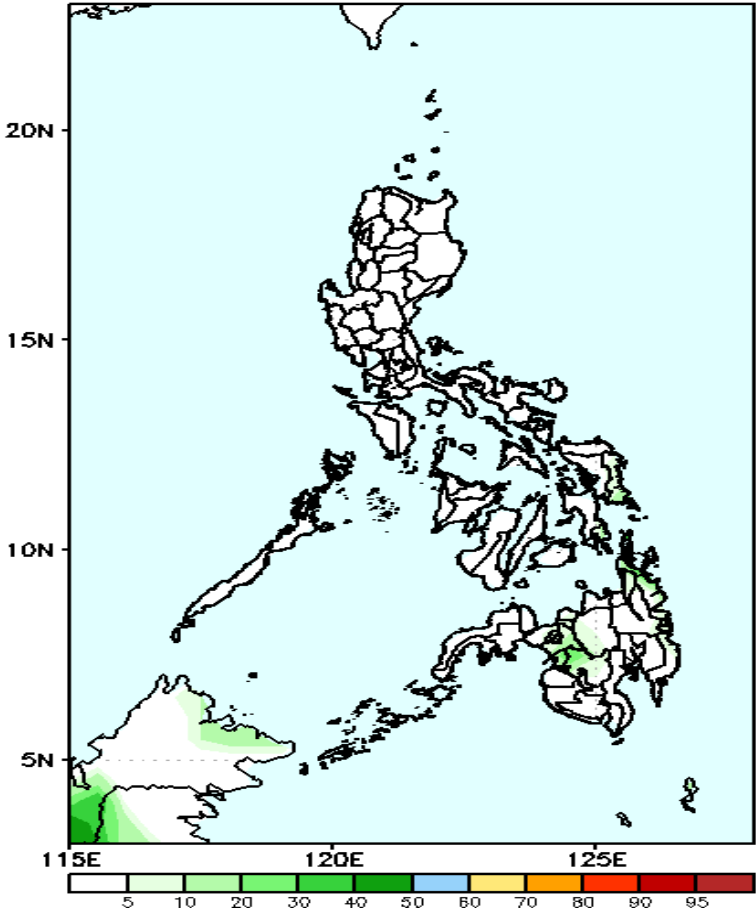


Moderate to a high probability of rainfall exceeding 50mm in most parts of Mindanao and portions of Eastern Visayas while low chance over the rest of the country.

Exceedance Probability > 100/150/200 mm

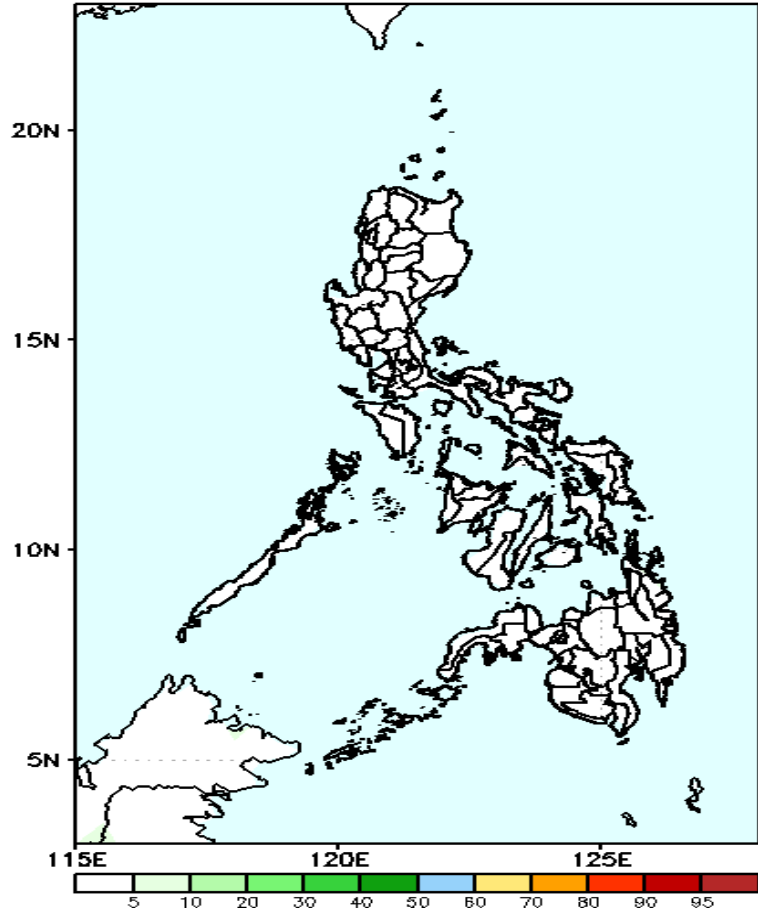
Week 1: Mar 10-16, 2023

GEFS Week-1 Exceedance Prob. > 100mm
Valid: 20230310 – 20230316



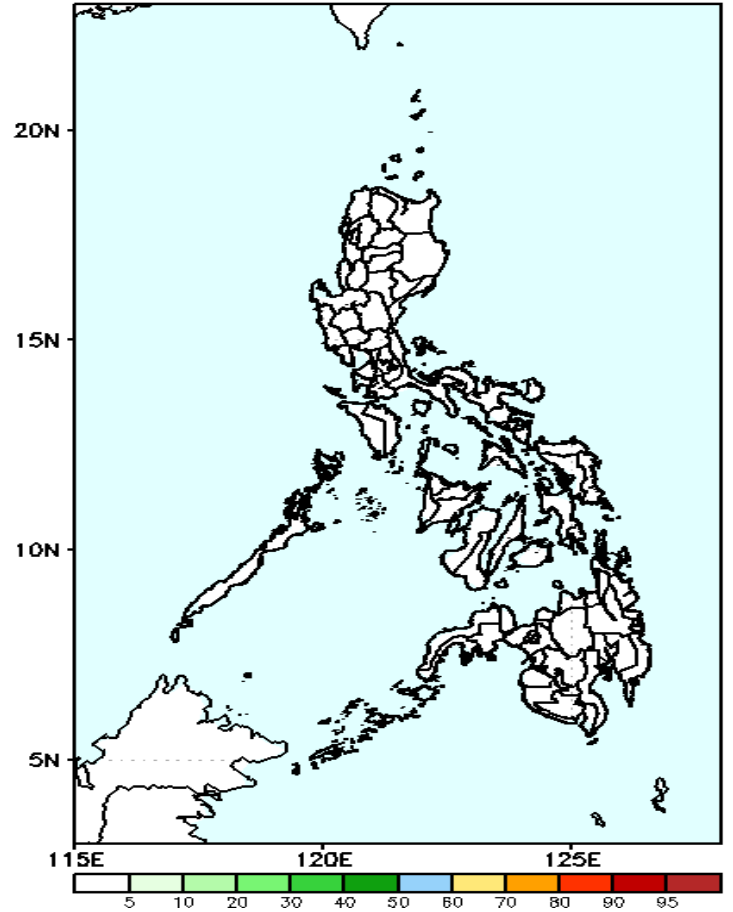
Low probability of rainfall to exceed 100mm in most parts of the country during the forecast period.

GEFS Week-1 Exceedance Prob. > 150mm
Valid: 20230310 – 20230316



Low probability of rainfall to exceed 150mm in most parts of the country during the forecast period.

GEFS Week-1 Exceedance Prob. > 200mm
Valid: 20230310 – 20230316

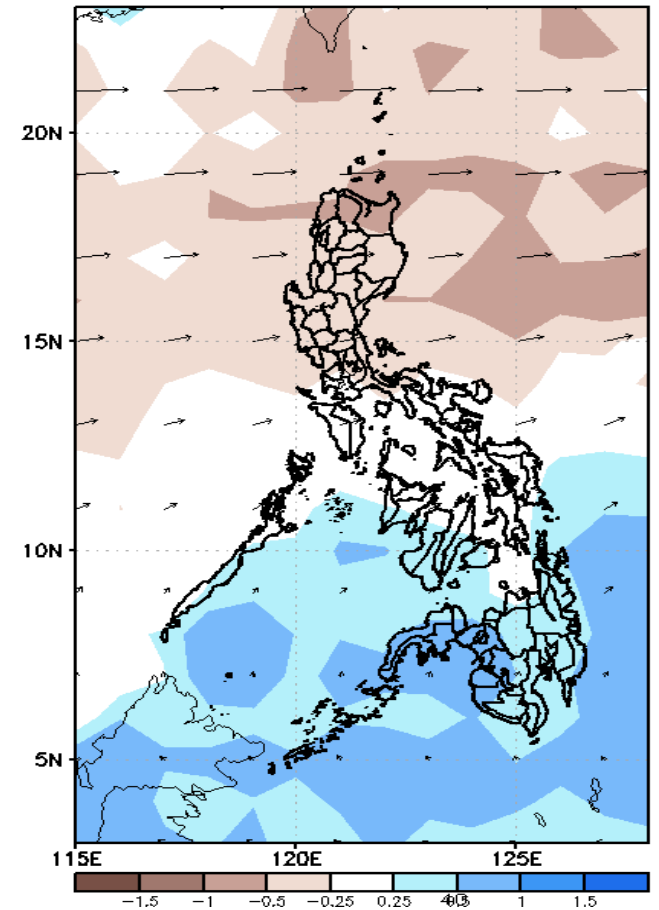
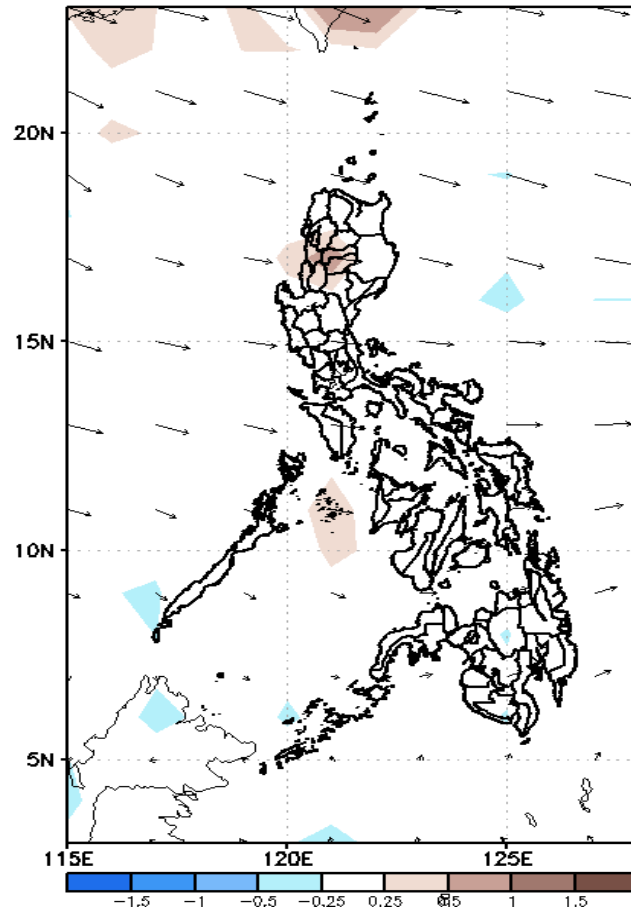
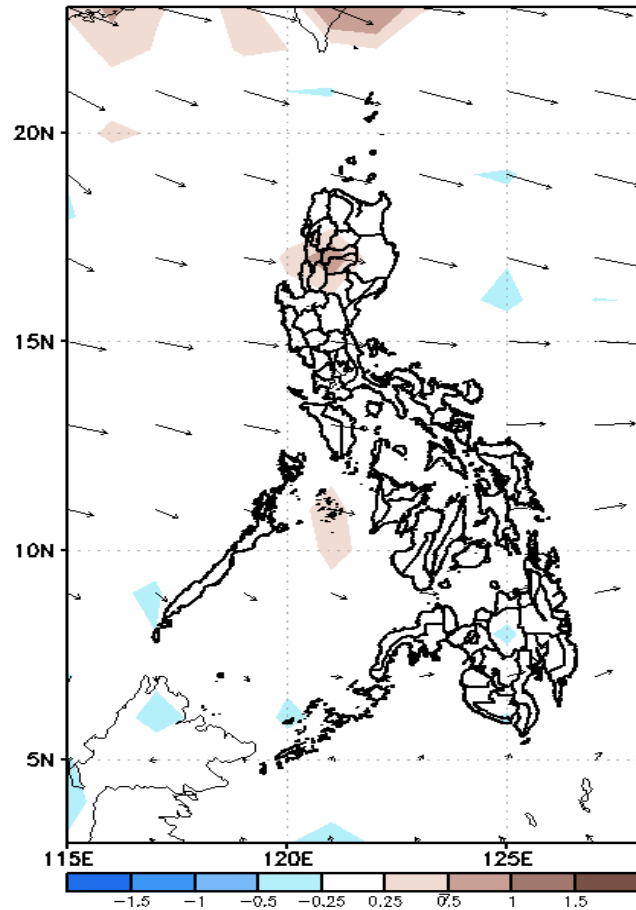


Low probability of rainfall to exceed 200mm in most parts of the country during the forecast period.

GEFS Week-2 Forecasts: Wind Anomaly Forecast

Week 2: Mar 17-23, 2023

GEFS Week-2 850-hPa Divergence and Wind AnomGEFS Week-2 700-hPa Divergence and Wind AnomGEFS week-2 200-hPa Divergence and Wind Anom
Valid: 20230317 - 20230323

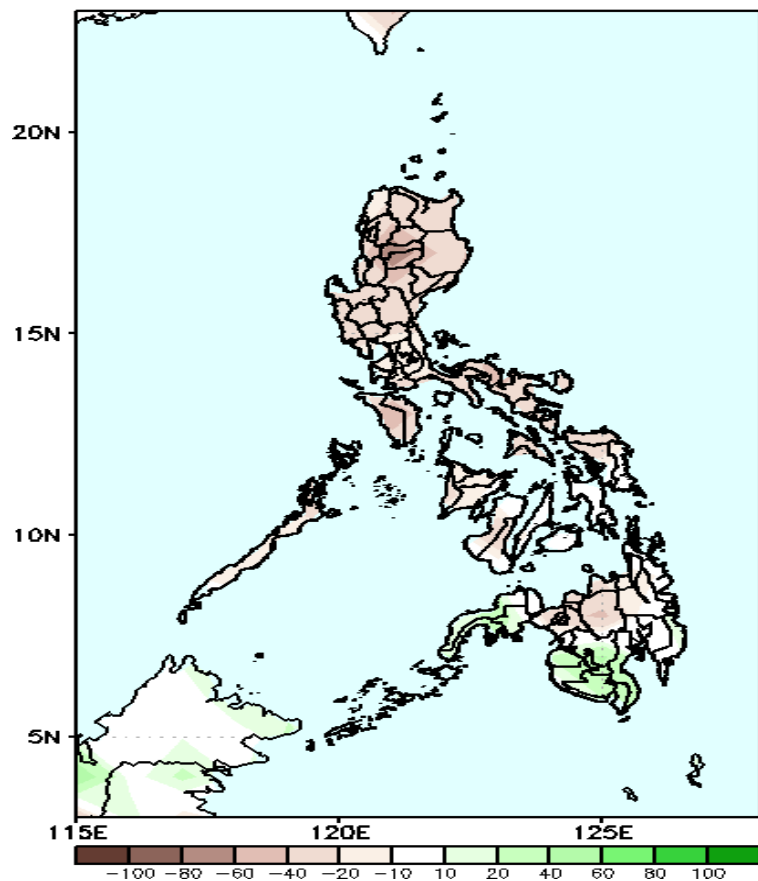


Easterlies is forecasted to affect most parts of the country during the forecast period.

Precipitation Anomaly and Exceedance Probability > 25/50 mm

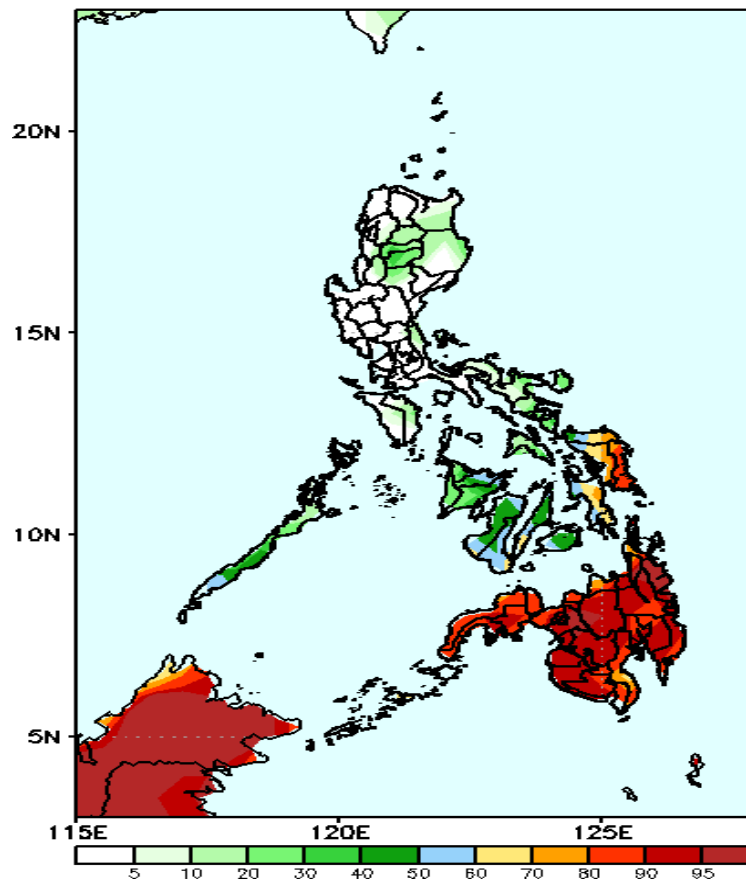
Week 2: Mar 17-23, 2023

GEFS Week-2 Precip Anomaly
Valid: 20230317 - 20230323



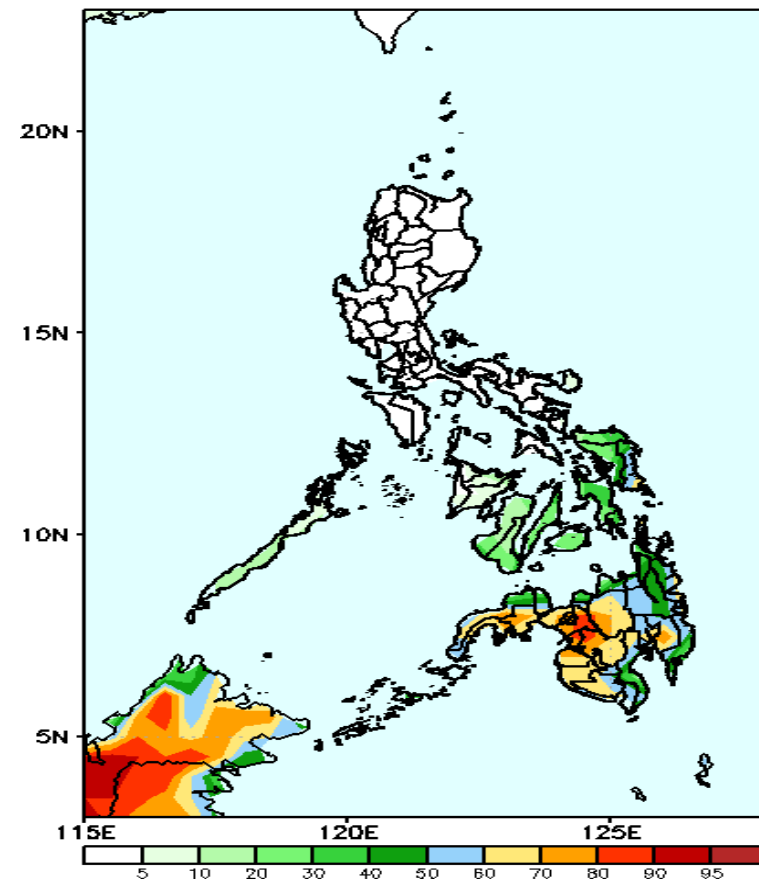
Rainfall deficit of 20-70mm is expected in most parts of the country except in some areas in western Mindanao where 20-60mm increase of rainfall is more likely during the forecast period.

GEFS Week-2 Exceedance Prob. > 25mm
Valid: 20230317 - 20230323



High to a very high probability of rainfall exceeding 25mm in Mindanao and Eastern Visayas while low to moderate chance over the rest of the country.

GEFS Week-2 Exceedance Prob. > 50mm
Valid: 20230317 - 20230323

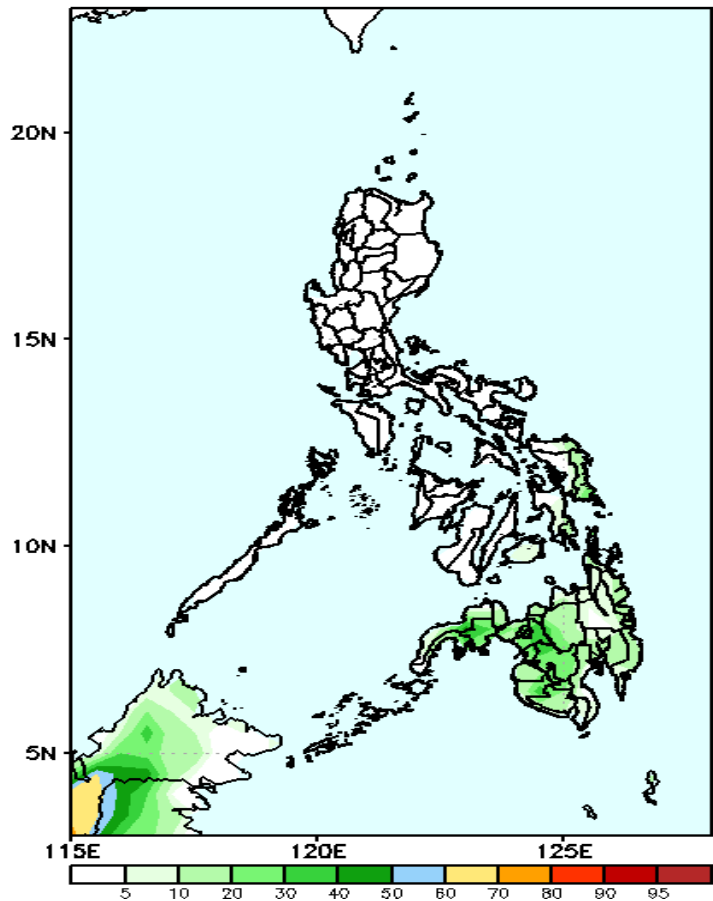


Moderate to a high probability of rainfall exceeding 50mm in Mindanao and Eastern Visayas while low chance over the rest of the country.

Exceedance Probability > 100/150/200 mm

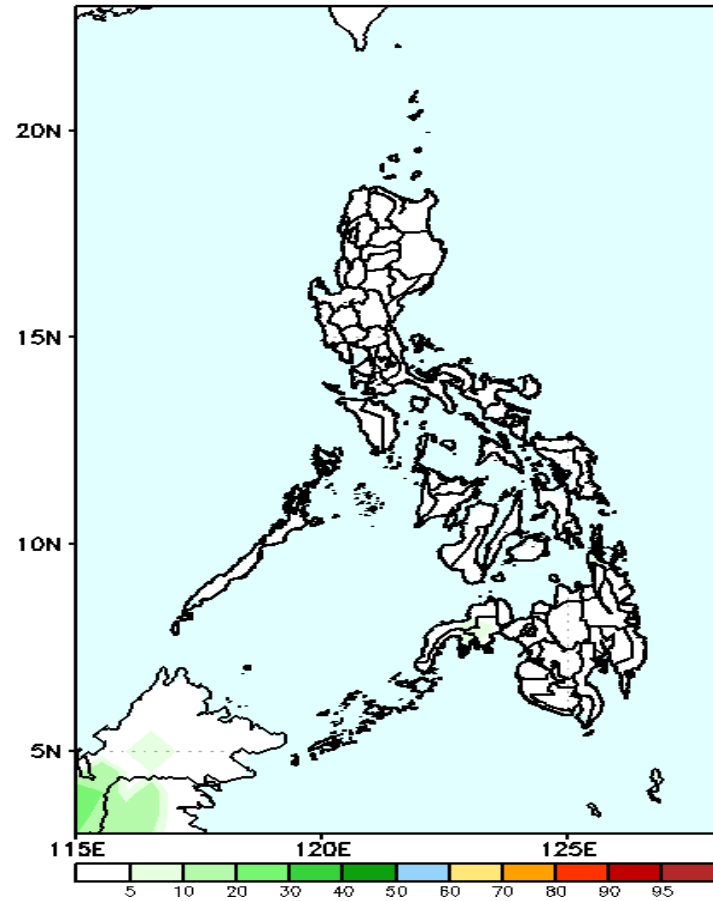
Week 2: Mar 17-23, 2023

GEFS Week-2 Exceedance Prob. > 100mm
Valid: 20230317 – 20230323



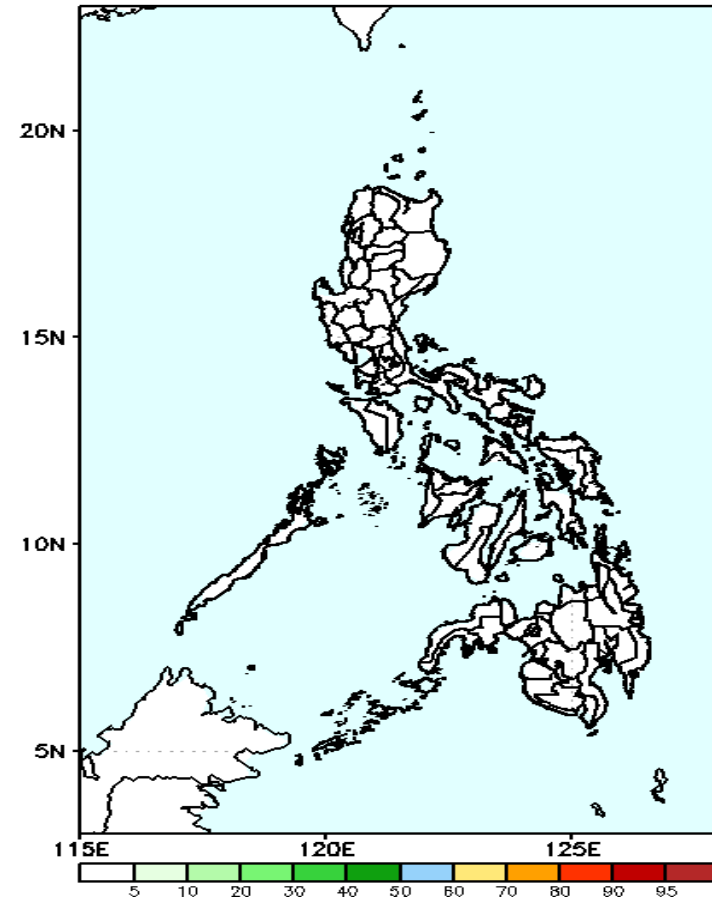
Low probability of rainfall to exceed 100mm in most parts of the country during the forecast period.

GEFS Week-2 Exceedance Prob. > 150mm
Valid: 20230317 – 20230323



Low probability of rainfall to exceed 150mm in most parts of the country during the forecast period.

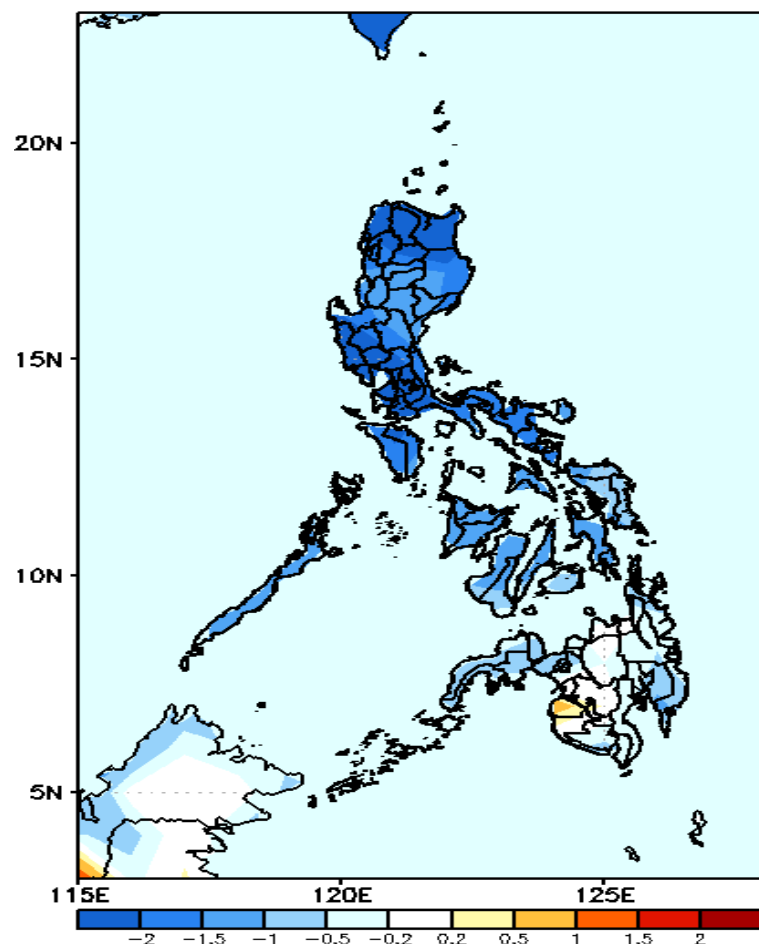
GEFS Week-2 Exceedance Prob. > 200mm
Valid: 20230317 – 20230323



Low probability of rainfall to exceed 200mm in most parts of the country during the forecast period.

GEFS Week-1 & 2 Forecasts: T2m Anomaly

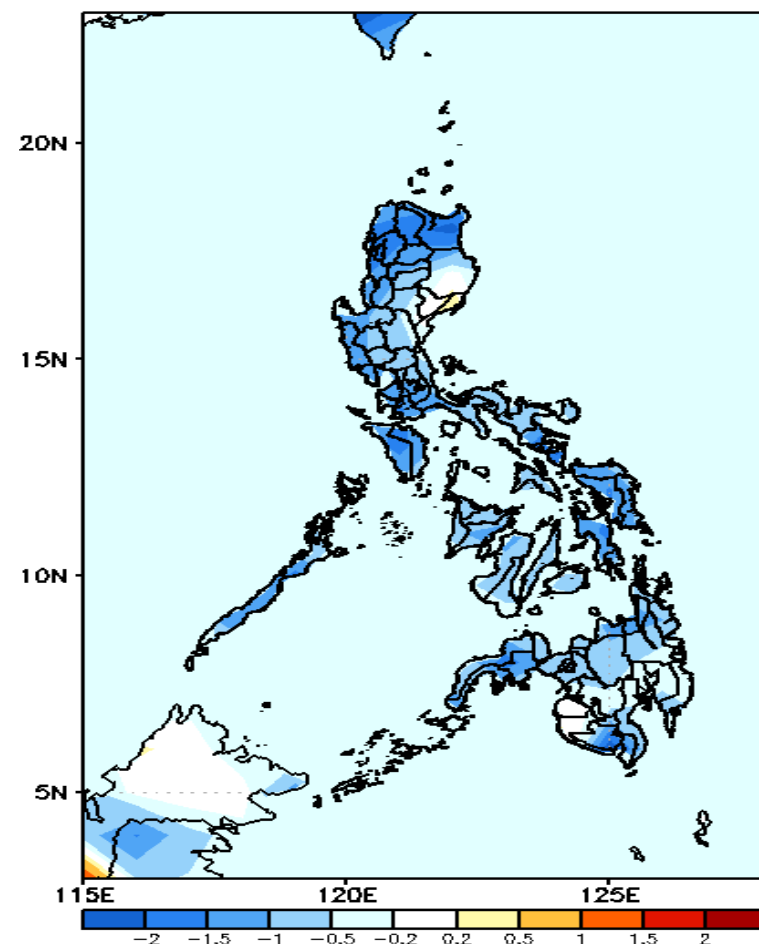
GEFS Week-1 T2m Anomaly
Valid: 20230310 — 20230316



2m Temperature Week 1: Mar 10-16, 2023

Cooler than average surface air temperature will likely experience in most parts of Luzon and Visayas while average to slightly cooler temperature in Mindanao during the forecast period.

GEFS Week-2 T2m Anomaly
Valid: 20230317 — 20230323



2m Temperature Week 2: Mar 17-23, 2023

Slightly cooler to cooler than average surface air temperature will likely experience in most parts of the country during the forecast period.