



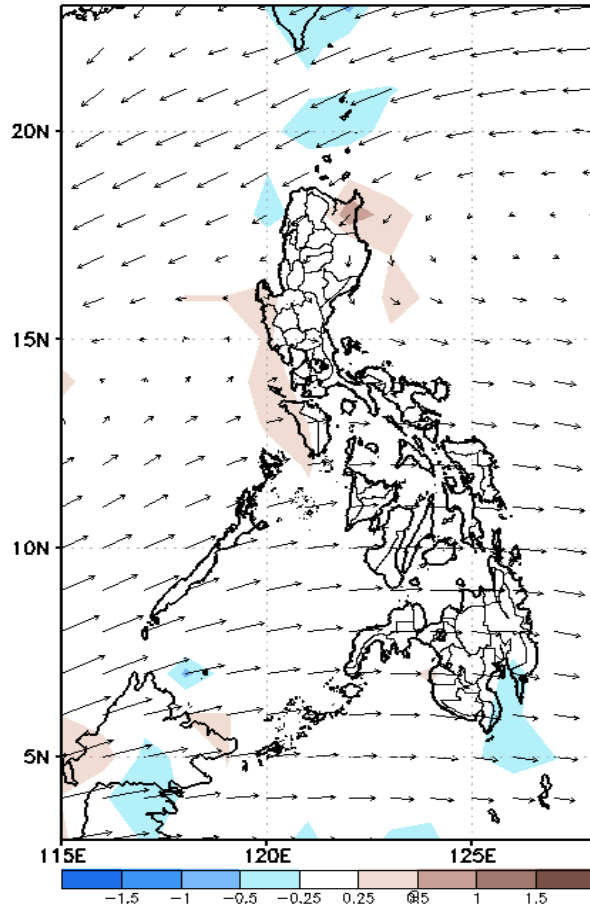
Week 1 & Week 2 Forecast for the Philippines using GEFS Model



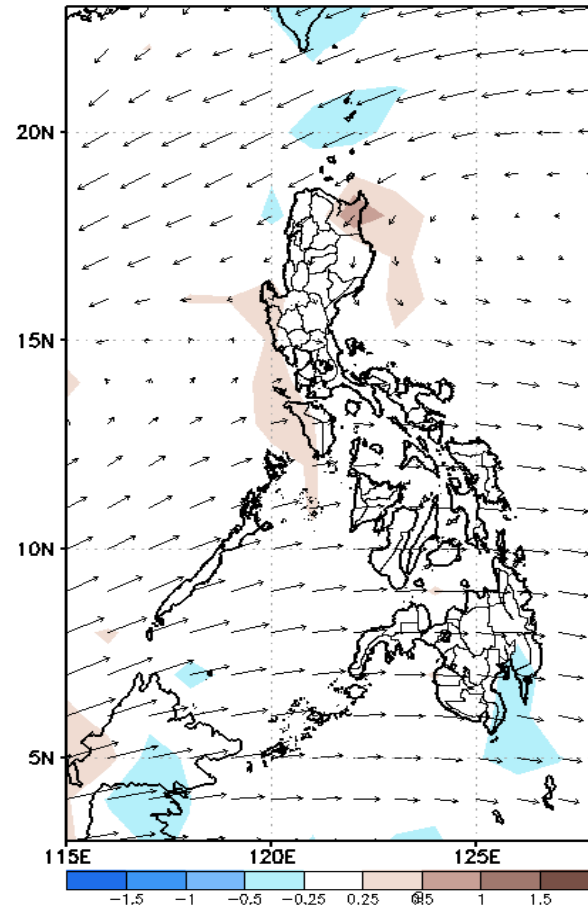
GEFS Week-1 Forecasts: Wind Anomaly Forecast

Week 1: Oct 10-16, 2022

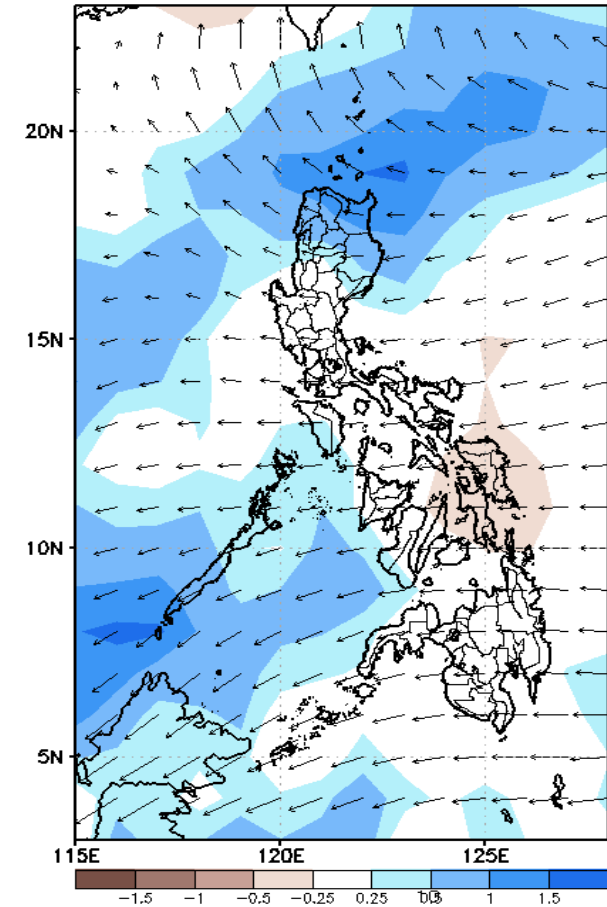
GEFS Week-1 850-hPa Divergence and Wind Anom
Valid: 20221010 - 20221016



GEFS Week-1 700-hPa Divergence and Wind Anom
Valid: 20221010 - 20221016



GEFS Week-1 200-hPa Divergence and Wind Anom
Valid: 20221010 - 20221016

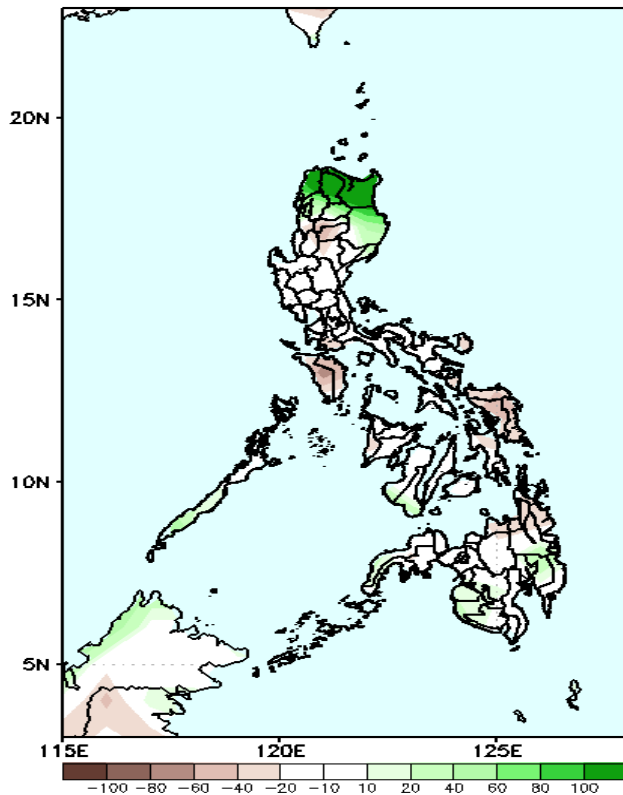


Northeasterly wind anomalies will likely affect northern Luzon while Westerly wind anomalies is forecasted to affect the rest of the country during the forecast period.

Precipitation Anomaly and Exceedance Probability > 25/50 mm

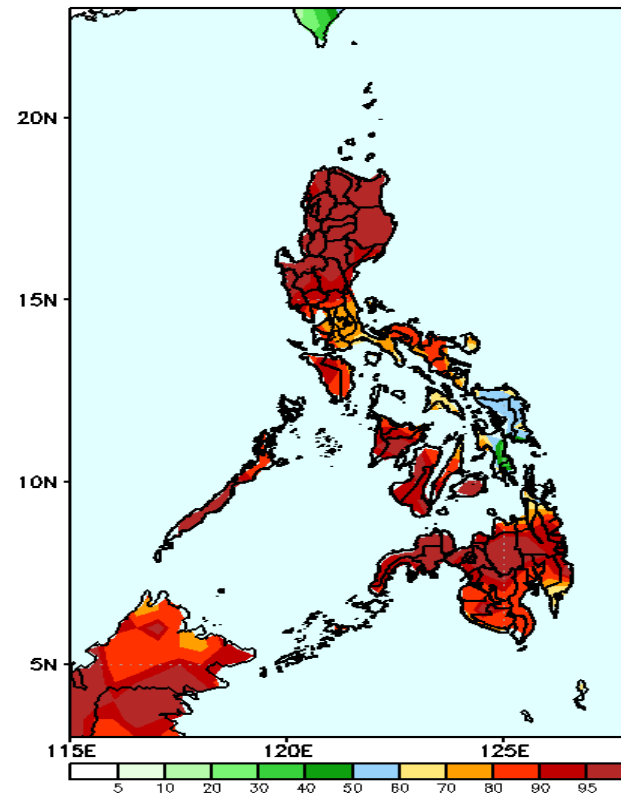
Week 1: Oct 10-16, 2022

GEFS Week-1 Precip Anomaly
Valid: 20221010 - 20221016



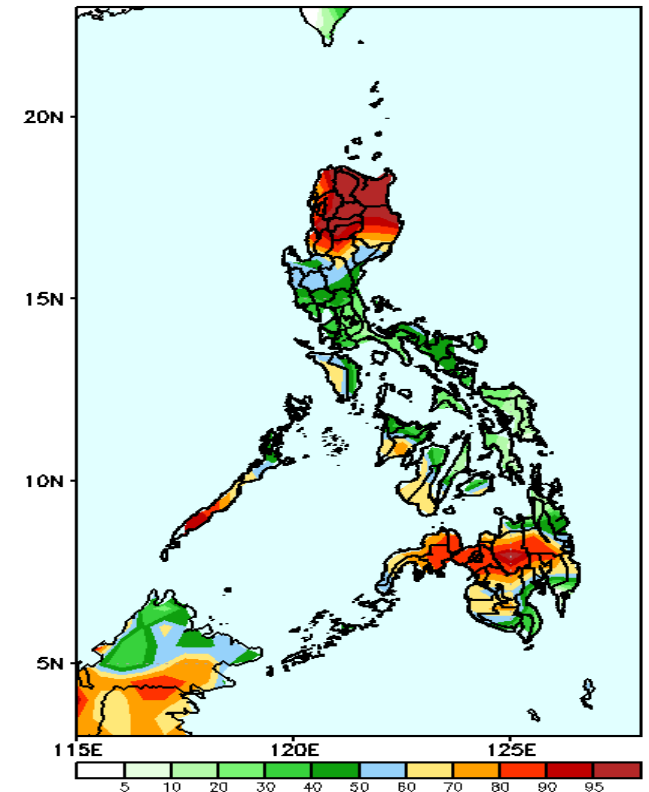
Increase of rainfall of more than 100mm in Ilocos Norte, Apayao and Cagayan, 20-40mm in Abra, Kalinga and Isabela while 20-60mm rainfall deficit for the rest of the country during the forecast period.

GEFS Week-1 Exceedance Prob. > 25mm
Valid: 20221010 - 20221016



High probability of rainfall to exceed 25mm in most parts of the country during the forecast period.

GEFS Week-1 Exceedance Prob. > 50mm
Valid: 20221010 - 20221016

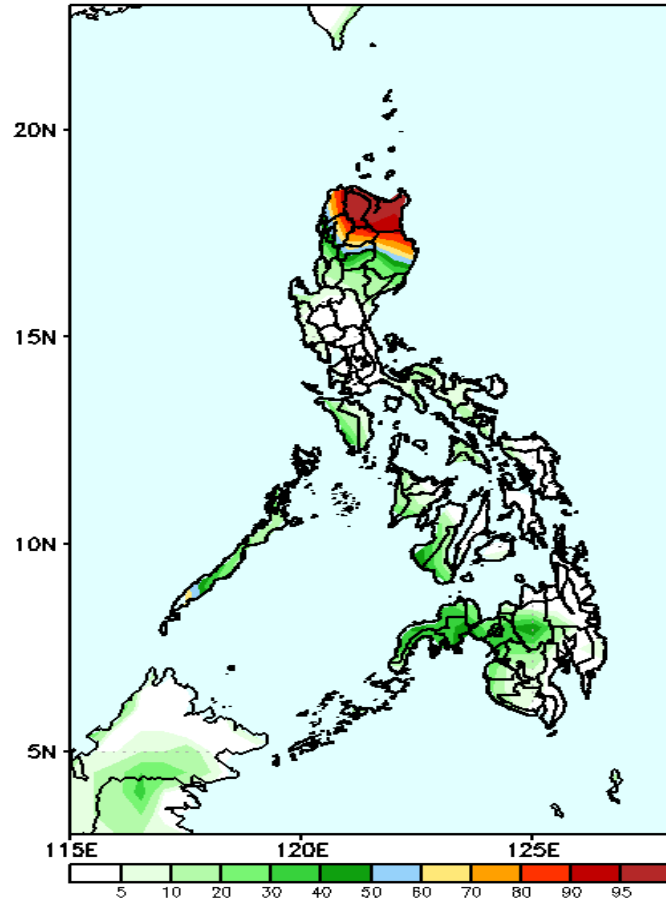


High probability of rainfall to exceed 50mm in most parts of Northern Luzon, Palawan, Occ. Mindoro, some areas in western Visayas and most parts of Mindanao (except some areas in northeast and southern parts) while less likely for the rest of the country during the forecast period.,

Exceedance Probability > 100/150/200 mm

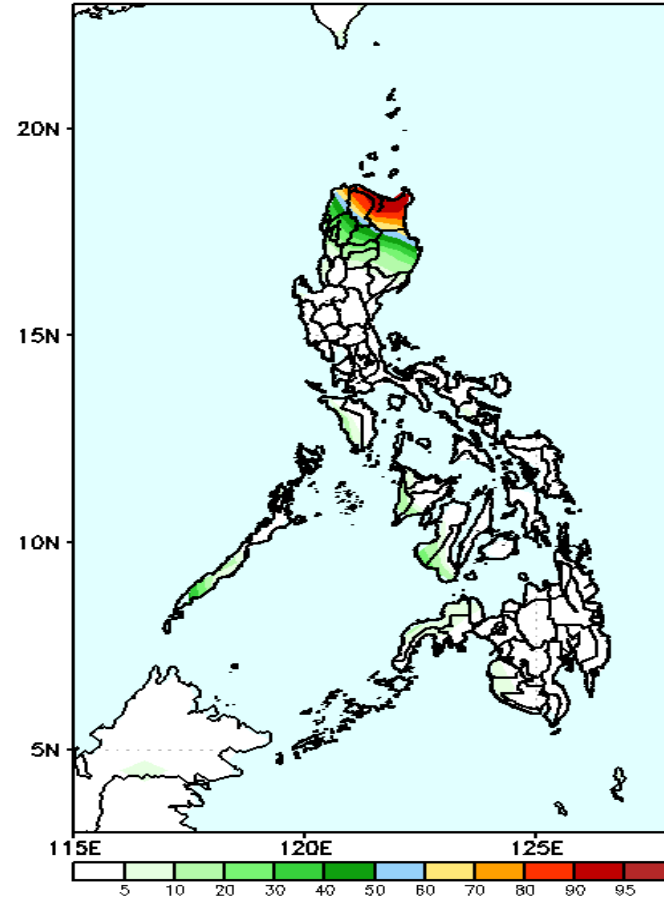
Week 1: Oct 10-16, 2022

GEFS Week-1 Exceedance Prob. > 100mm
Valid: 20221010 - 20221016



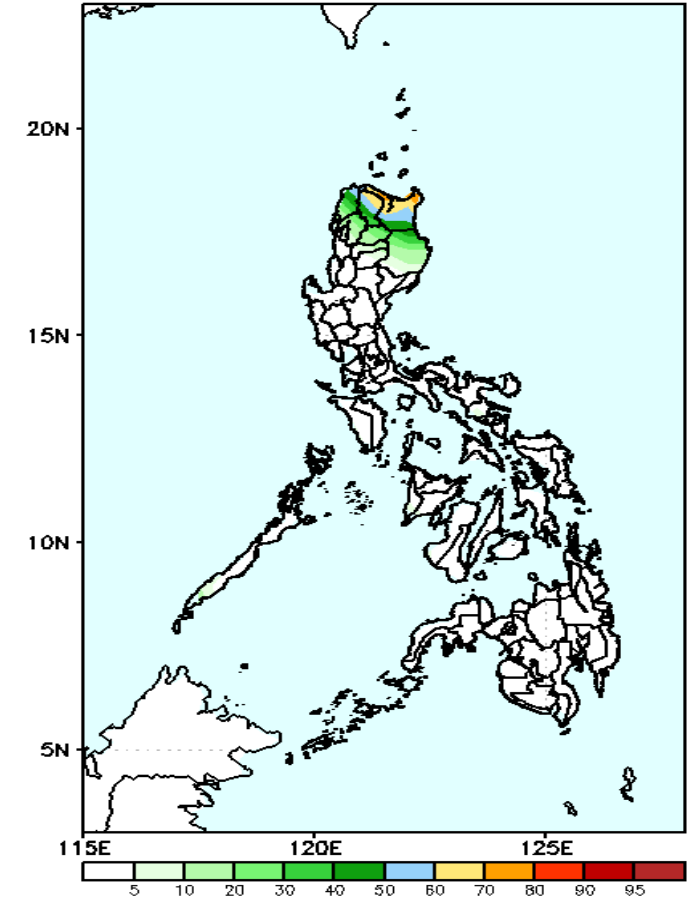
High probability of rainfall to exceed 100mm in Ilocos Norte, Apayao, Cagayan, Kalinga, Abra and northern Isabela while less likely for the rest of the country during the forecast period.

GEFS Week-1 Exceedance Prob. > 150mm
Valid: 20221010 - 20221016



High probability of rainfall to exceed 150mm in Apayao and Cagayan while less likely for the rest of the country during the forecast period.

GEFS Week-1 Exceedance Prob. > 200mm
Valid: 20221010 - 20221016



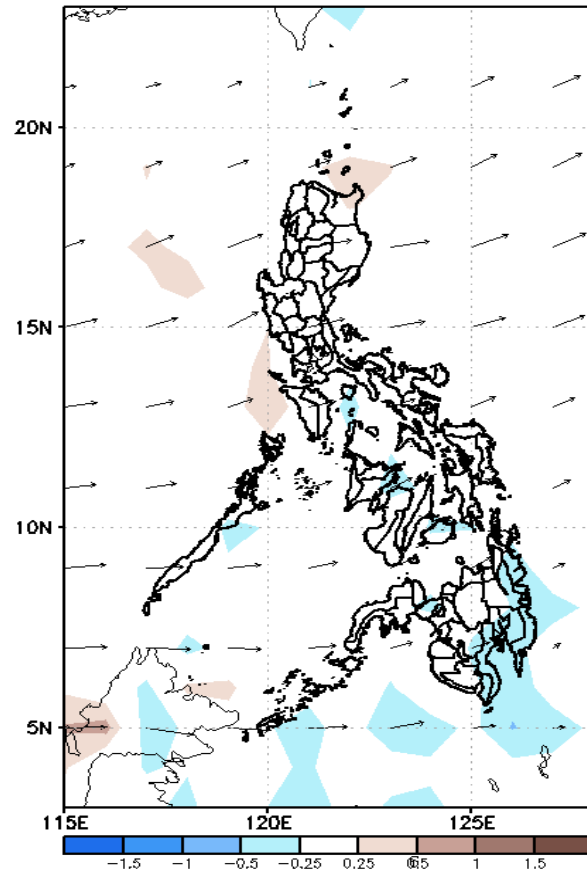
Low probability of rainfall to exceed 200mm in most parts of the country during the forecast period.



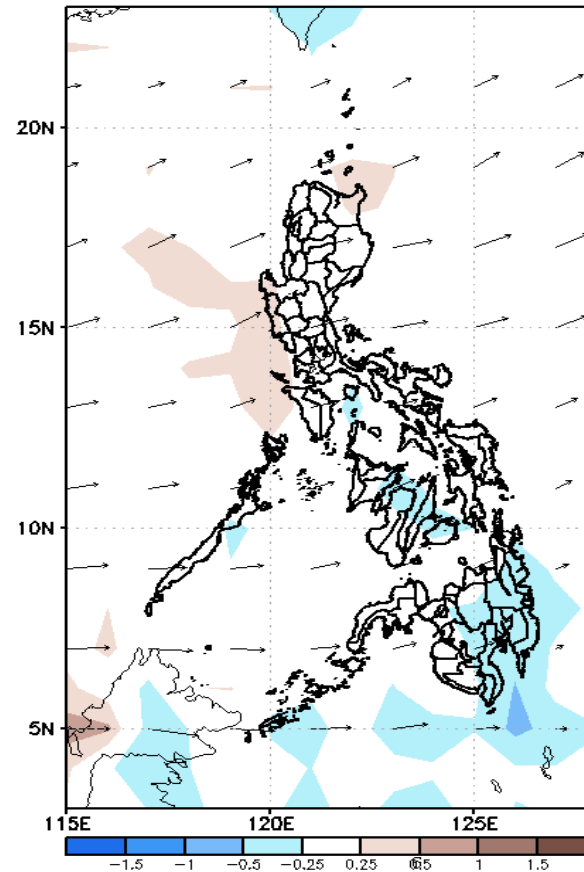
GEFS Week-2 Forecasts: Wind Anomaly Forecast

Week 2: Oct 17-23, 2022

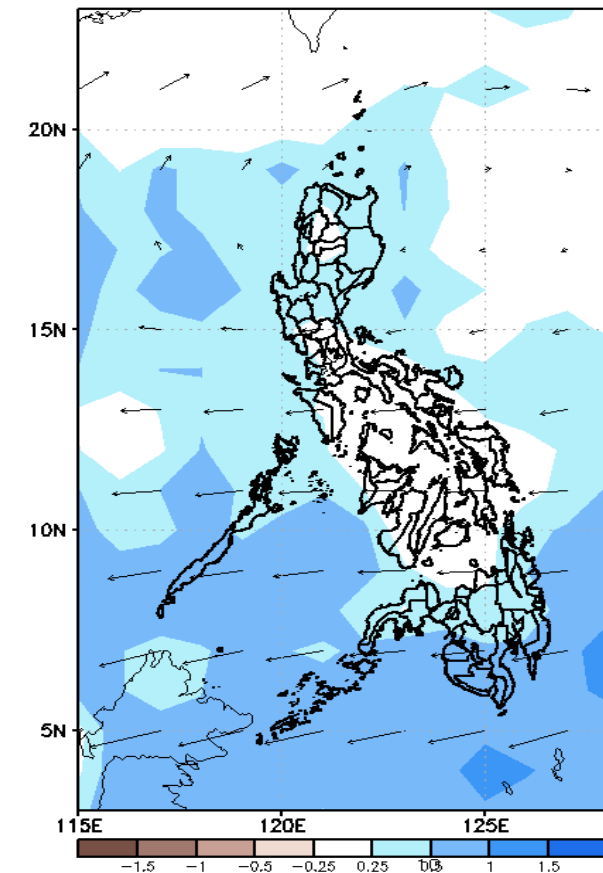
GEFS Week-2 850-hPa Divergence and Wind Anom
Valid: 20221017 - 20221023



GEFS Week-2 700-hPa Divergence and Wind Anom
Valid: 20221017 - 20221023



GEFS week-2 200-hPa Divergence and Wind Anom
Valid: 20221017 - 20221023

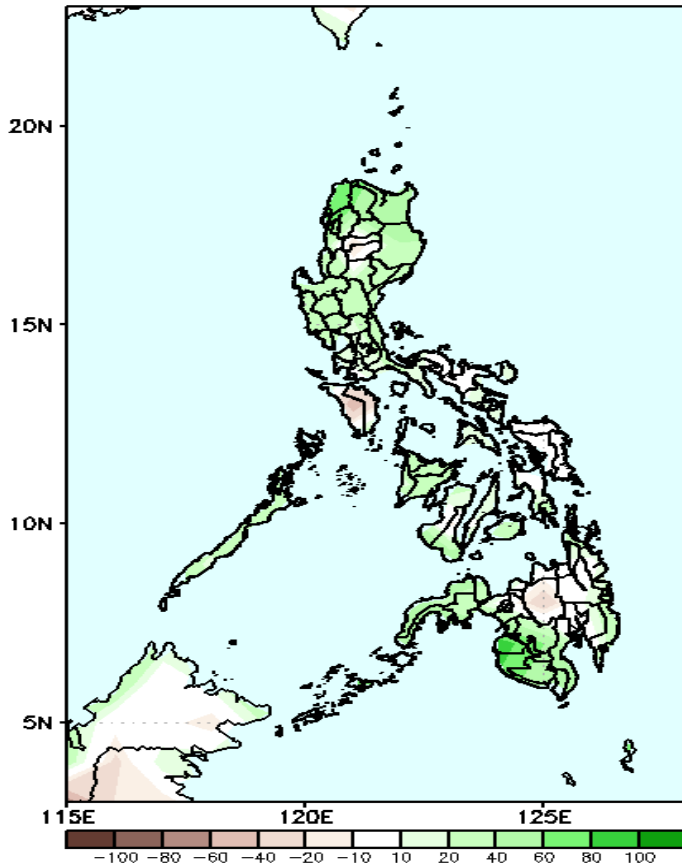


Westerly wind anomalies is forecasted to affect most parts of the country during the forecast period.

Precipitation Anomaly and Exceedance Probability > 25/50 mm

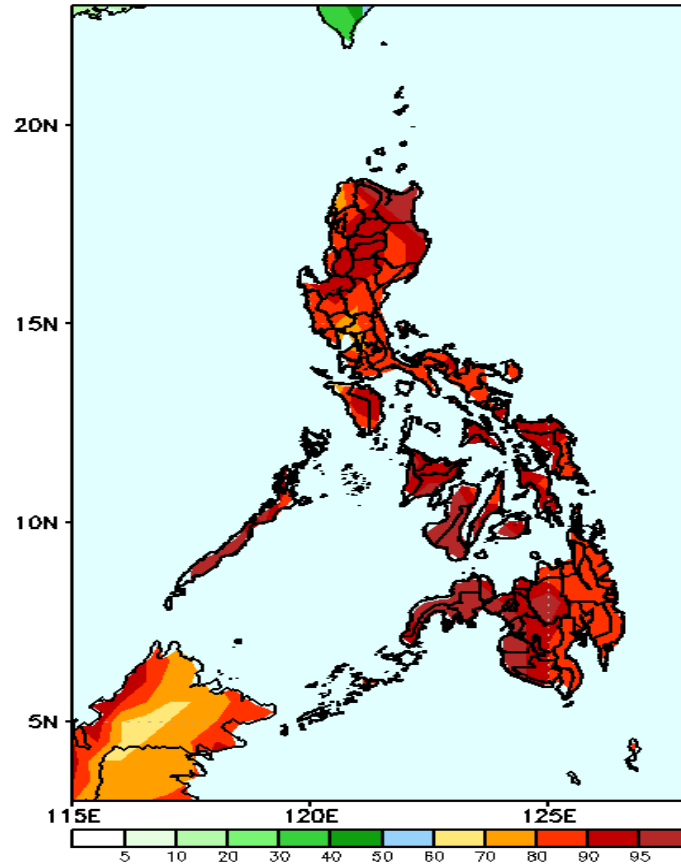
Week 2: Oct 17-23, 2022

GEFS Week-2 Precip Anomaly
Valid: 20221017 - 20221023



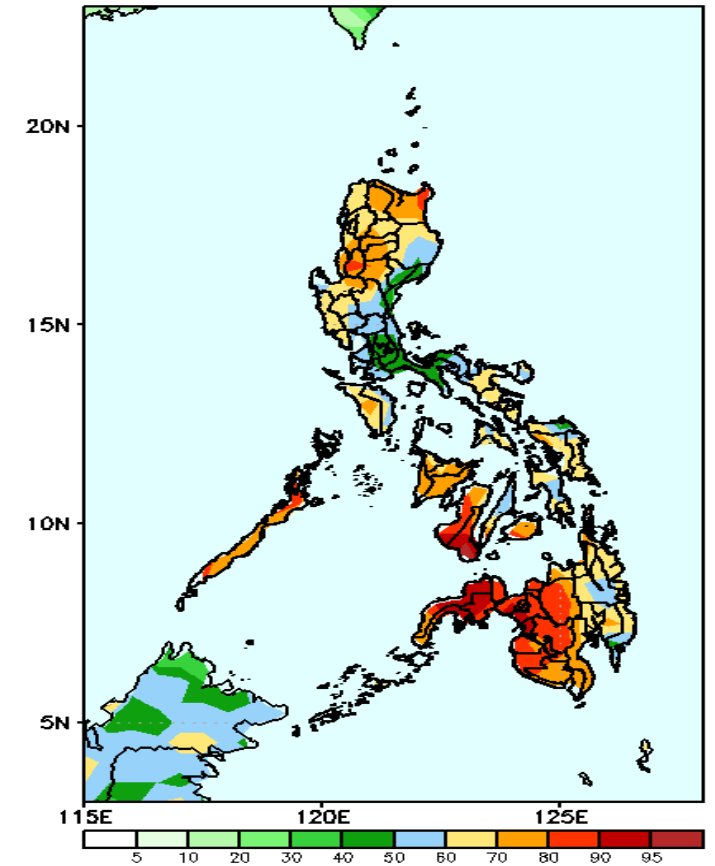
Increase of rainfall of 40-90mm is expected in most parts of the country except in Mindoro and Bukidnon where 20-40mm rainfall deficit is more likely during the forecast period.

GEFS Week-2 Exceedance Prob. > 25mm
Valid: 20221017 - 20221023



High probability of rainfall to exceed 25mm in most parts of the country during the forecast period.

GEFS Week-2 Exceedance Prob. > 50mm
Valid: 20221017 - 20221023



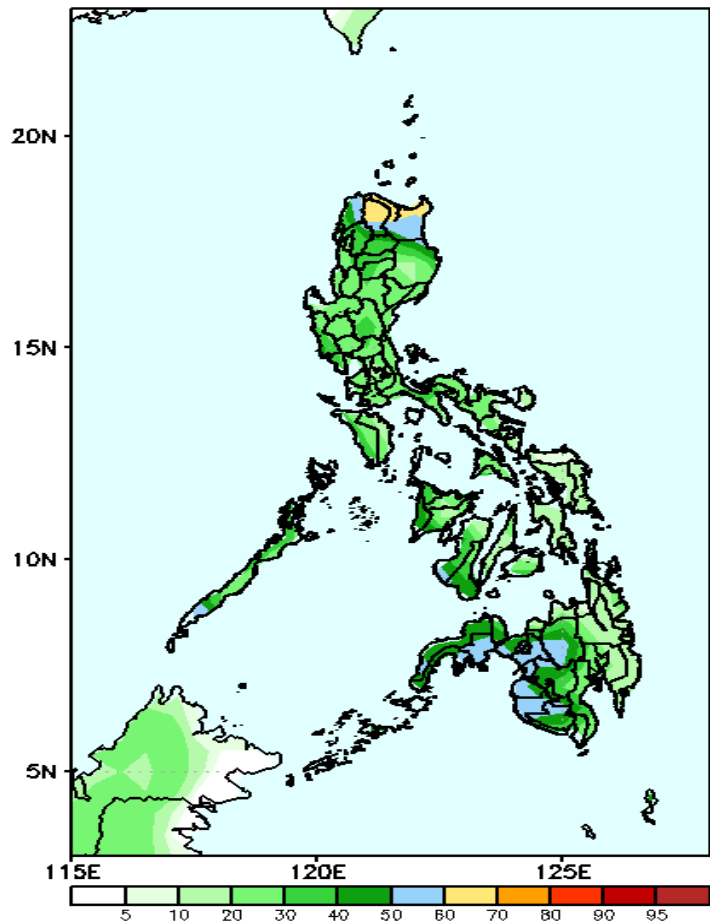
60-85% probability of rainfall to exceed 50mm in most parts of the country except in some areas in Southern Luzon during the forecast period



Exceedance Probability > 100/150/200 mm

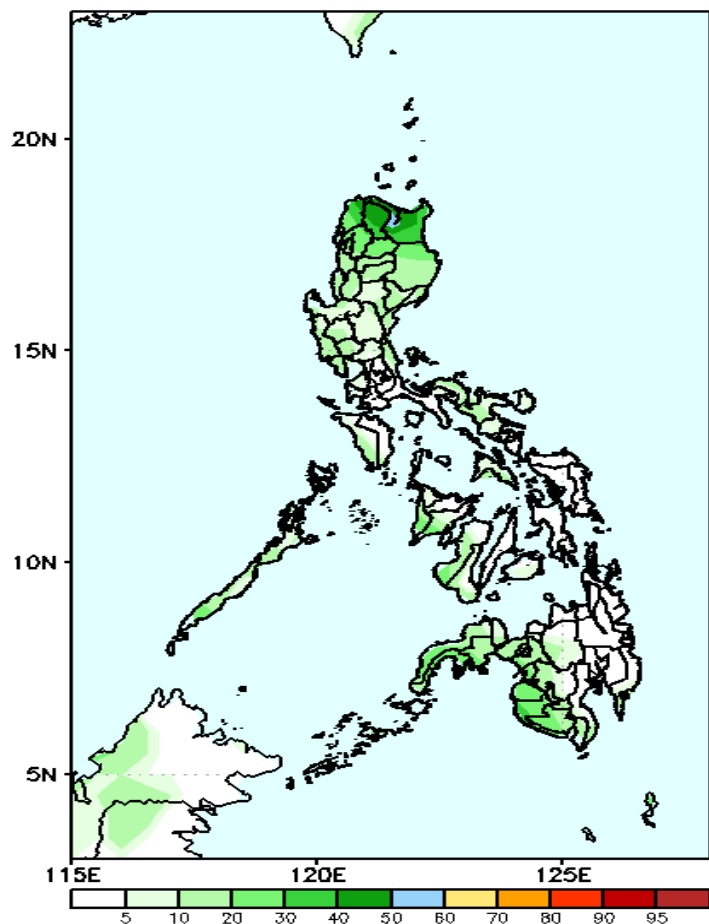
Week 2: Oct 17-23, 2022

GEFS Week-2 Exceedance Prob. > 100mm
Valid: 20221017 – 20221023



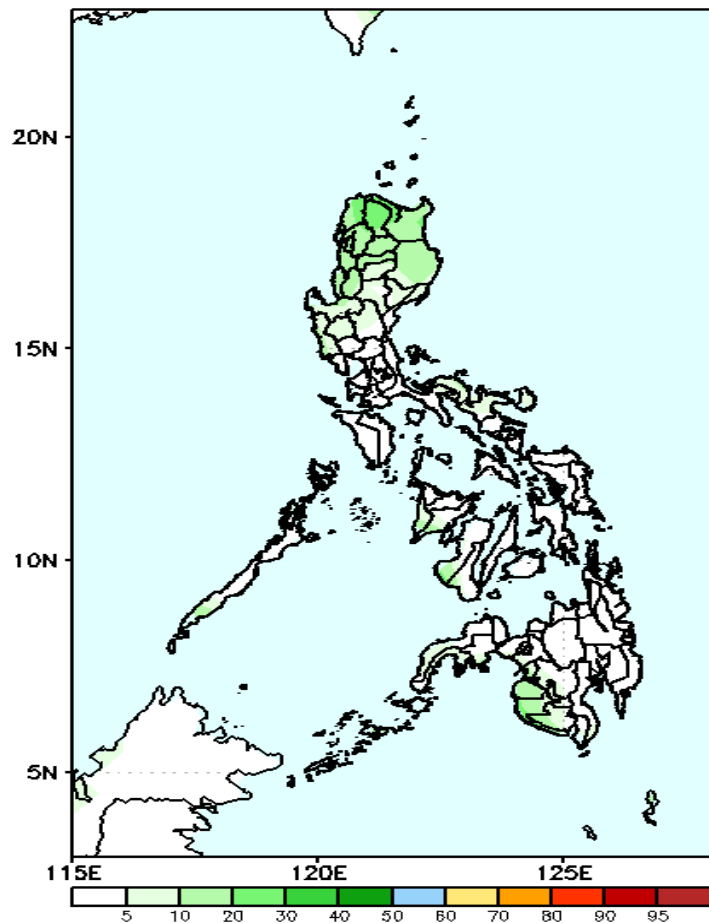
Low probability of rainfall to exceed 100mm in most parts of the country during the forecast period.

GEFS Week-2 Exceedance Prob. > 150mm
Valid: 20221017 – 20221023



Low probability of rainfall to exceed 150mm in most parts of the country during the forecast period.

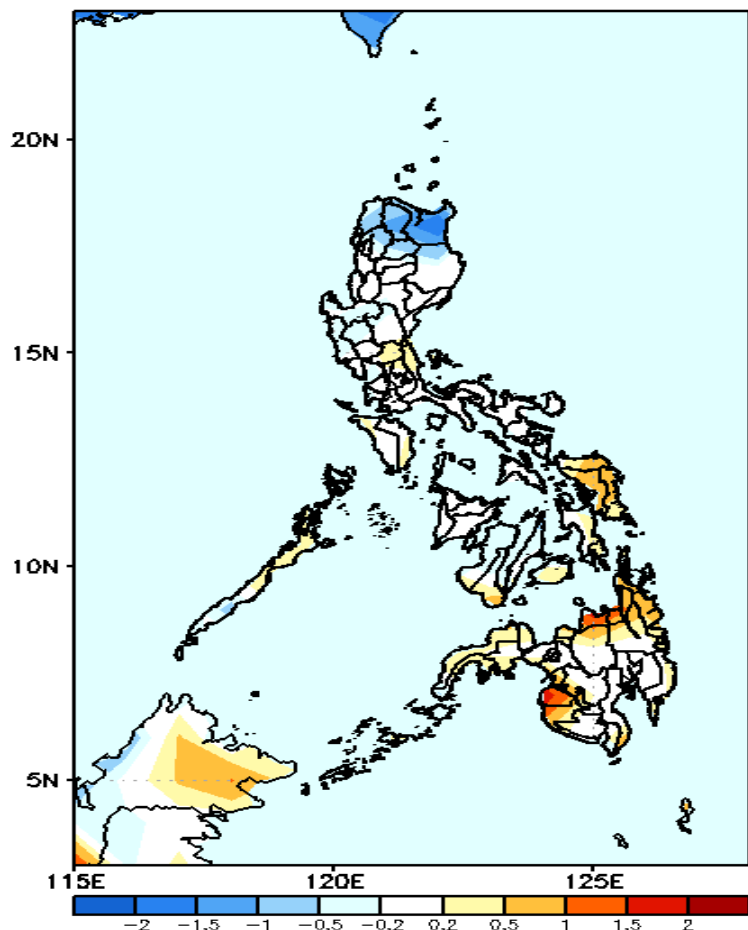
GEFS Week-2 Exceedance Prob. > 200mm
Valid: 20221017 – 20221023



Low probability of rainfall to exceed 200mm in most parts of the country during the forecast period.

GEFS Week-1 & 2 Forecasts: T2m Anomaly

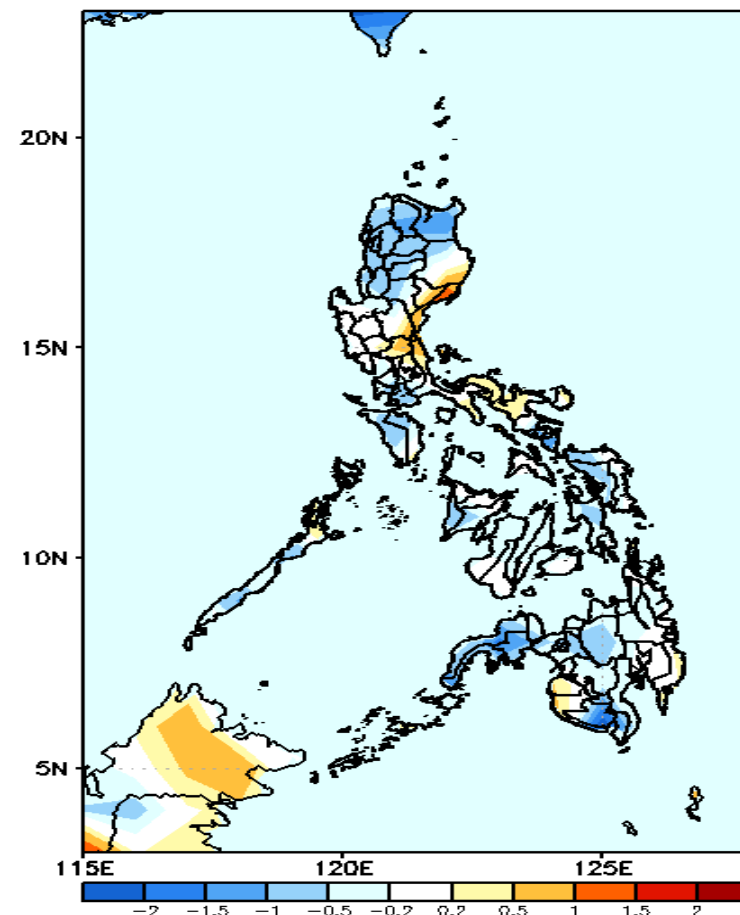
GEFS Week-1 T2m Anomaly
Valid: 20221010 - 20221016



2m Temperature Week 1: Oct 10-16, 2022

Near to warmer than average surface air temperature will likely experience in most parts of the country except in Ilocos Norte, Apayao & Cagayan where cooler than temperature is expected during the forecast period during the forecast period.

GEFS Week-2 T2m Anomaly
Valid: 20221017 - 20221023



2m Temperature Week 2: Oct 17-23, 2022

Near to cooler than average surface air temperature will likely experience in most parts of the country except in some areas in Central Luzon, Maguindanao and Sultan Kudarat where near to slightly warmer than average surface air temperature is expected during the forecast period.