



Week 1 & Week 2 Forecast for the Philippines using GEFS Model



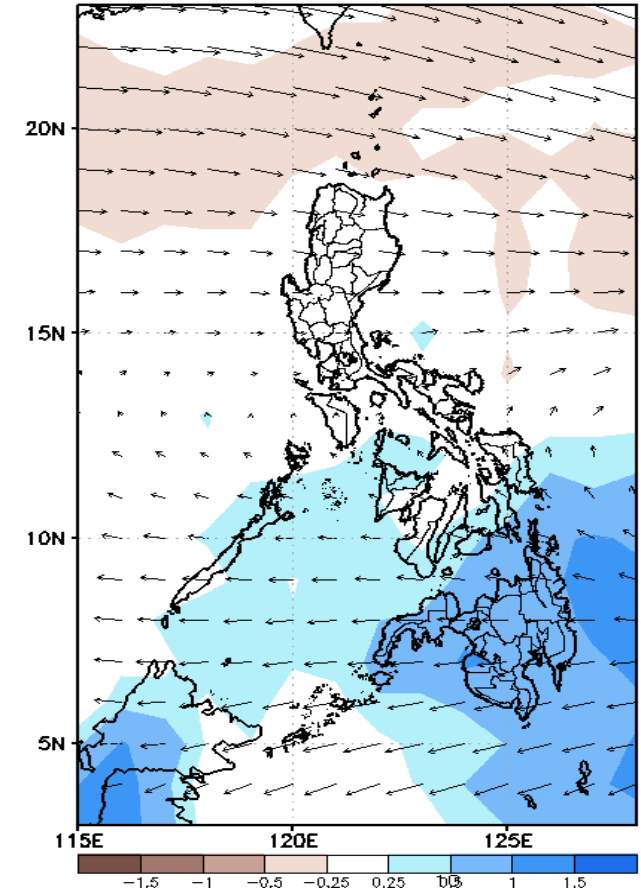
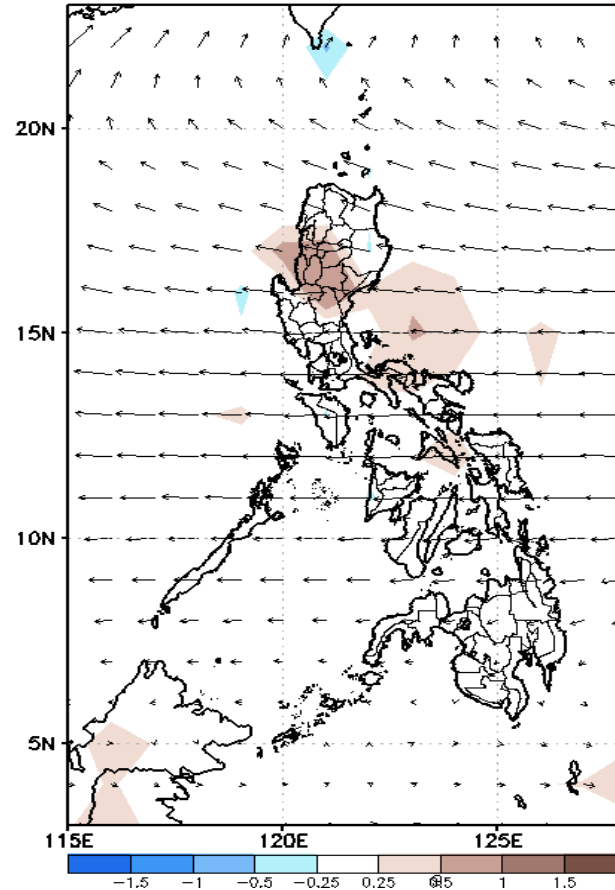
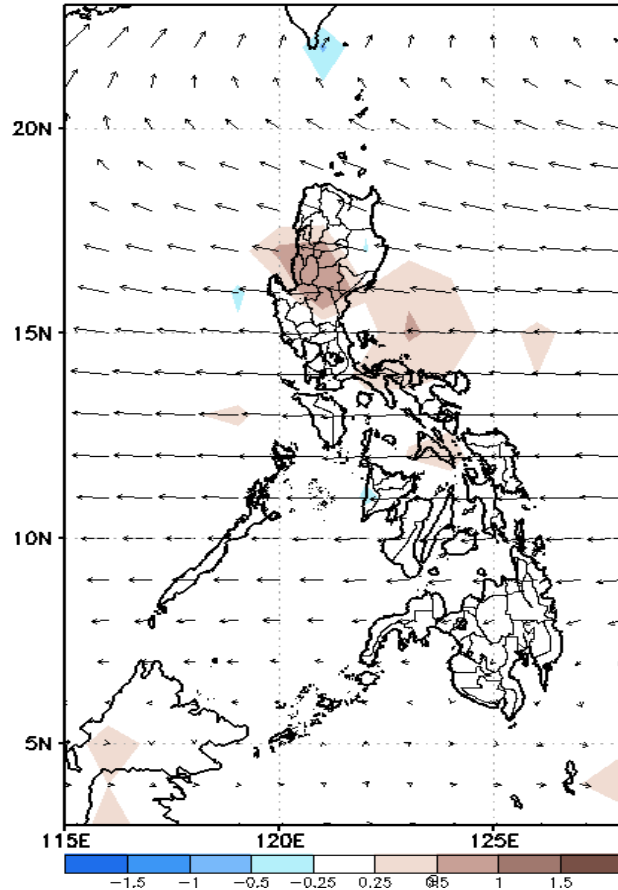
GEFS Week-1 Forecasts: Divergence & Wind Anomaly

Week 1: May 10-16, 2021

GEFS Week-1 850-hPa Divergence and Wind Anom
Valid: 20210510 - 20210516

GEFS Week-1 700-hPa Divergence and Wind Anom
Valid: 20210510 - 20210516

GEFS Week-1 200-hPa Divergence and Wind Anom
Valid: 20210510 - 20210516



Upper and low level Divergence suggest likelihood of precipitation in some parts of Visayas and most parts of Mindanao. Easterlies affecting most parts of the country attributing to warmer temperatures and higher heat index during the forecast period.

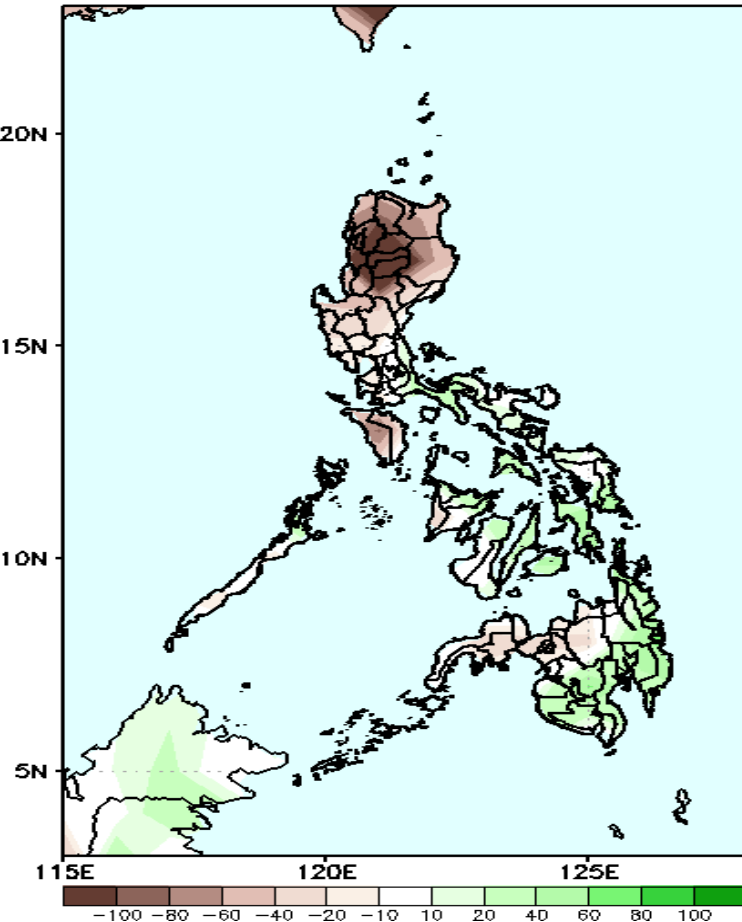
ayong
AGASA



Precipitation Anomaly and Exceedance Probability > 25/50 mm

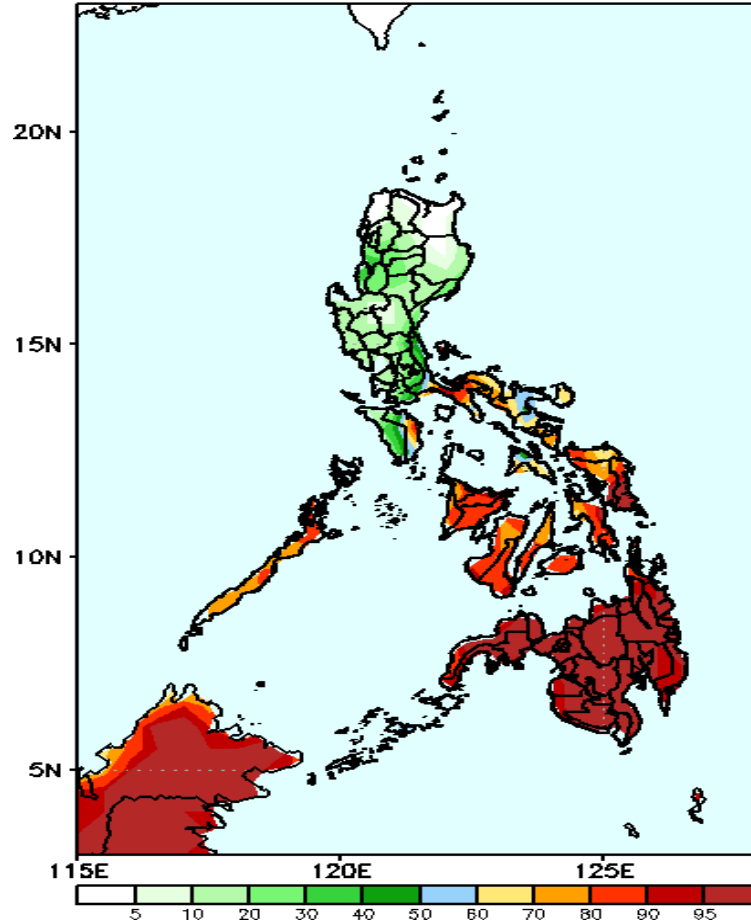
Week 1: May 10-16, 2021

GEFS Week-1 Precip Anomaly
Valid: 20210510 — 20210516



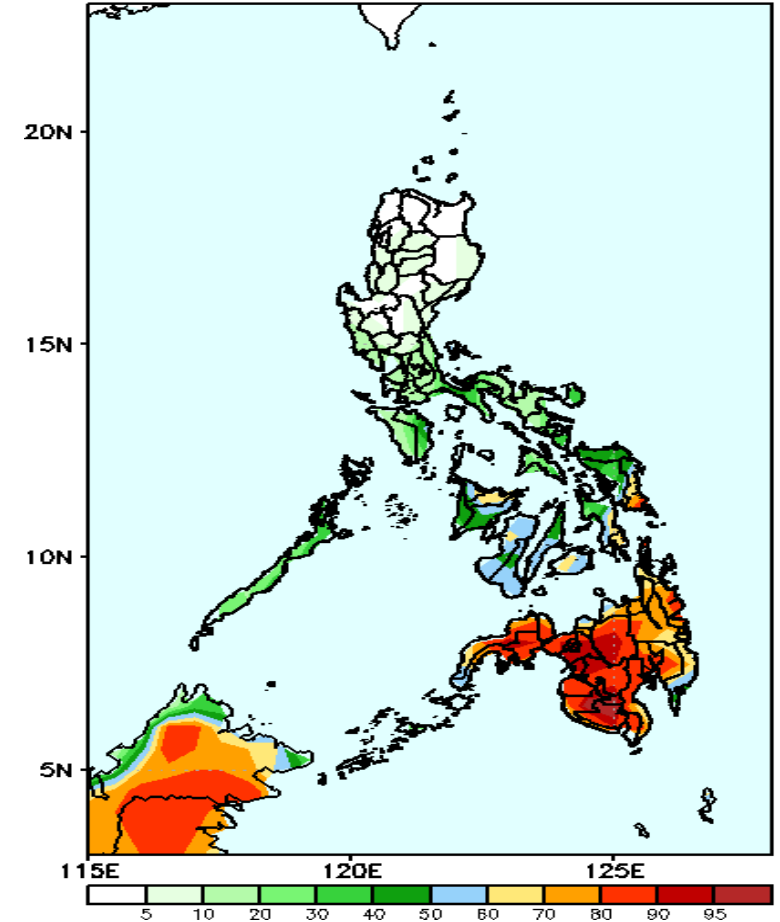
Rainfall deficit of more than 100mm is expected in most parts of Cordillera & Ilocos Region while increase of rainfall of 40-80mm is more likely in Visayas and Mindanao during the forecast period.

GEFS Week-1 Exceedance Prob. > 25mm
Valid: 20210510 — 20210516



High probability of rainfall to exceed 25mm in southern Quezon, Bicol region, Palawan and most parts of Visayas and Mindanao while less likely for the remaining parts of the country during the forecast period.

GEFS Week-1 Exceedance Prob. > 50mm
Valid: 20210510 — 20210516



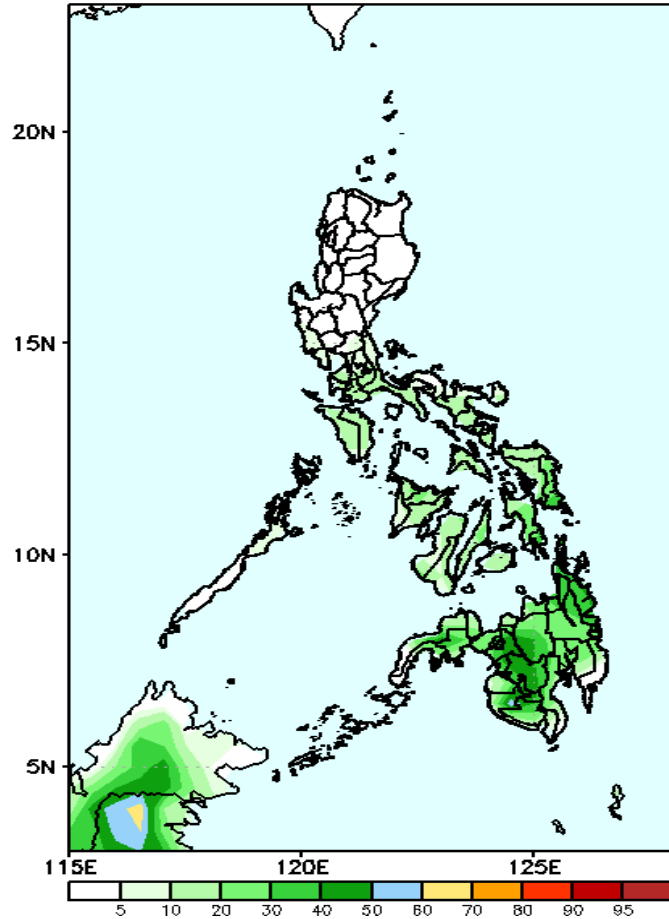
High probability of rainfall to exceed 50mm in most parts of Mindanao while less likely for the rest of the country during the forecast period.



Exceedance Probability > 100/150/200 mm

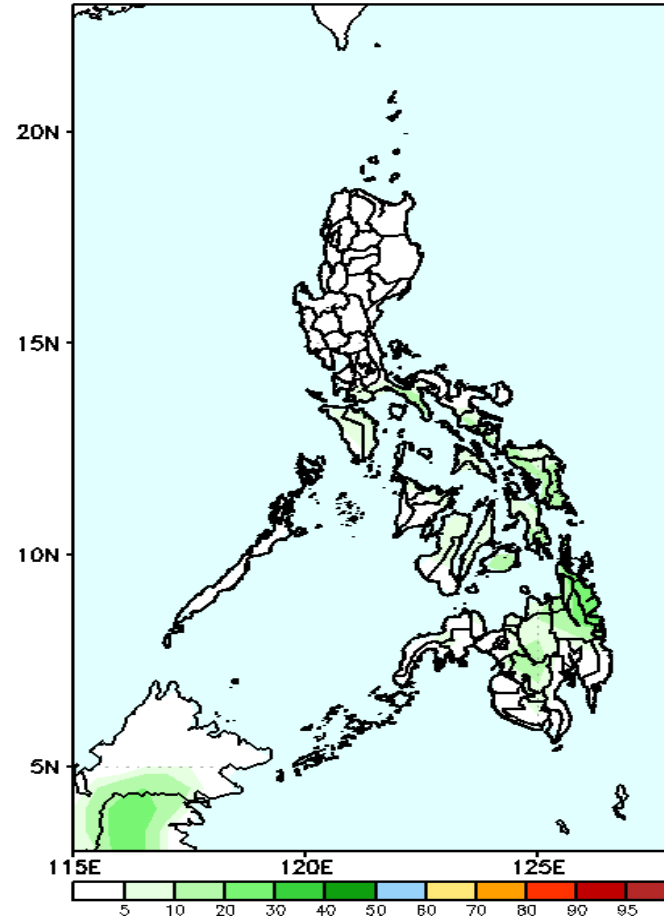
Week 1: May 10-16, 2021

GEFS Week-1 Exceedance Prob. > 100mm
Valid: 20210510 – 20210516



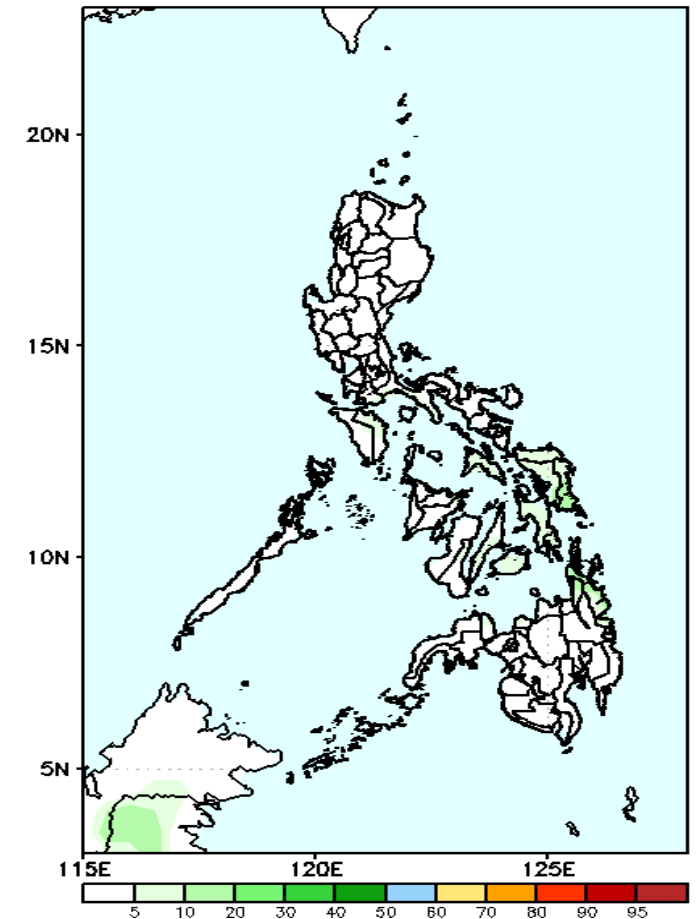
Less probability of rainfall to exceed 100mm in most parts of the country during the forecast period.

GEFS Week-1 Exceedance Prob. > 150mm
Valid: 20210510 – 20210516



Less probability of rainfall to exceed 150mm in most parts of the country during the forecast period.

GEFS Week-1 Exceedance Prob. > 200mm
Valid: 20210510 – 20210516



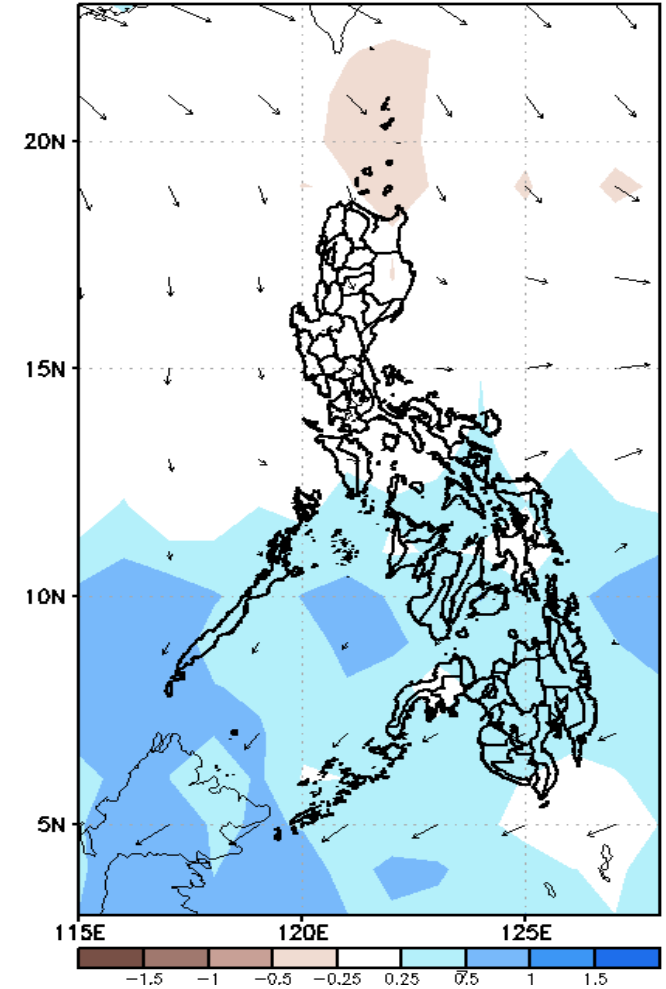
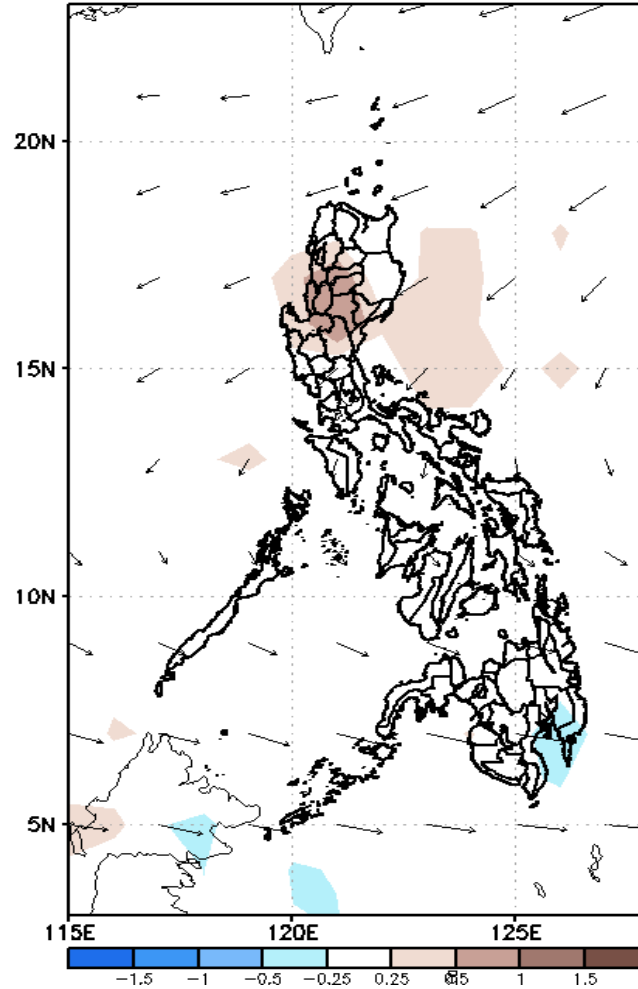
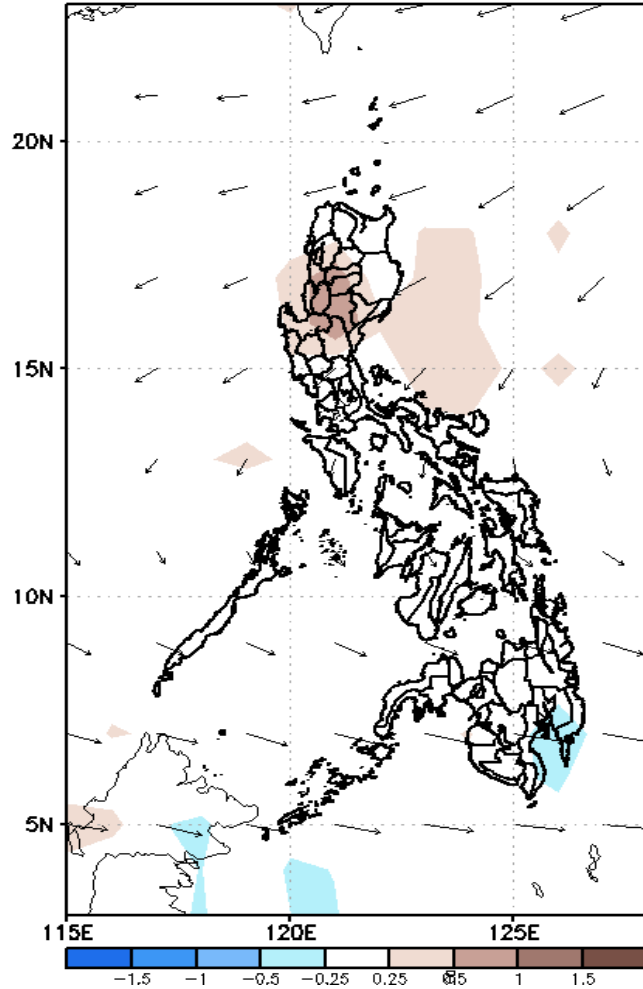
Less probability of rainfall to exceed 200mm in most parts of the country during the forecast period.



GEFS Week-2 Forecasts: Divergence & Wind Anomaly

Week 2: May 17-23, 2021

GEFS Week-2 850-hPa Divergence and Wind Anom
Valid: 20210517 - 20210523

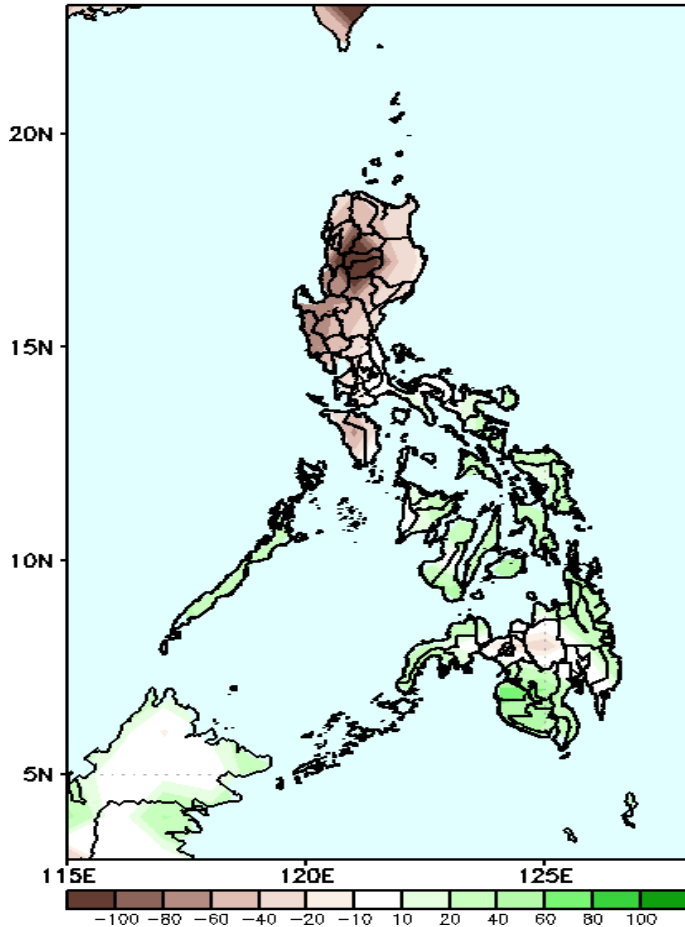


Upper and low level Divergence suggest likelihood of precipitation in most parts of Visayas and Mindanao. Easterlies affecting most parts of the country attributing to warmer temperatures and higher heat index during the forecast period.

Precipitation Anomaly and Exceedance Probability > 25/50 mm

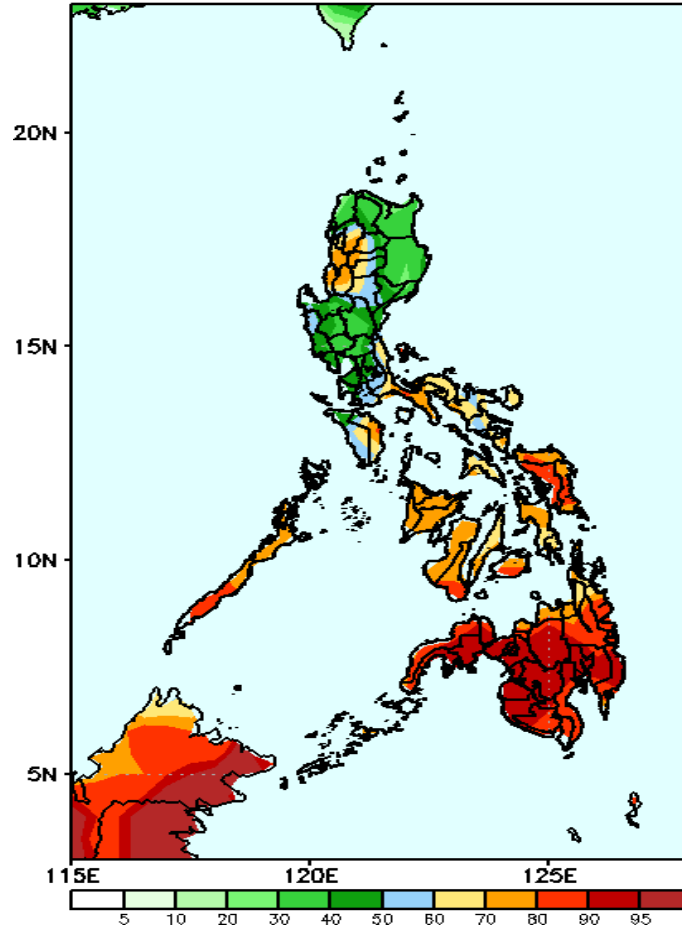
Week 2: May 17-23, 2021

GEFS Week-2 Precip. Anomaly
Valid: 20210517 - 20210523



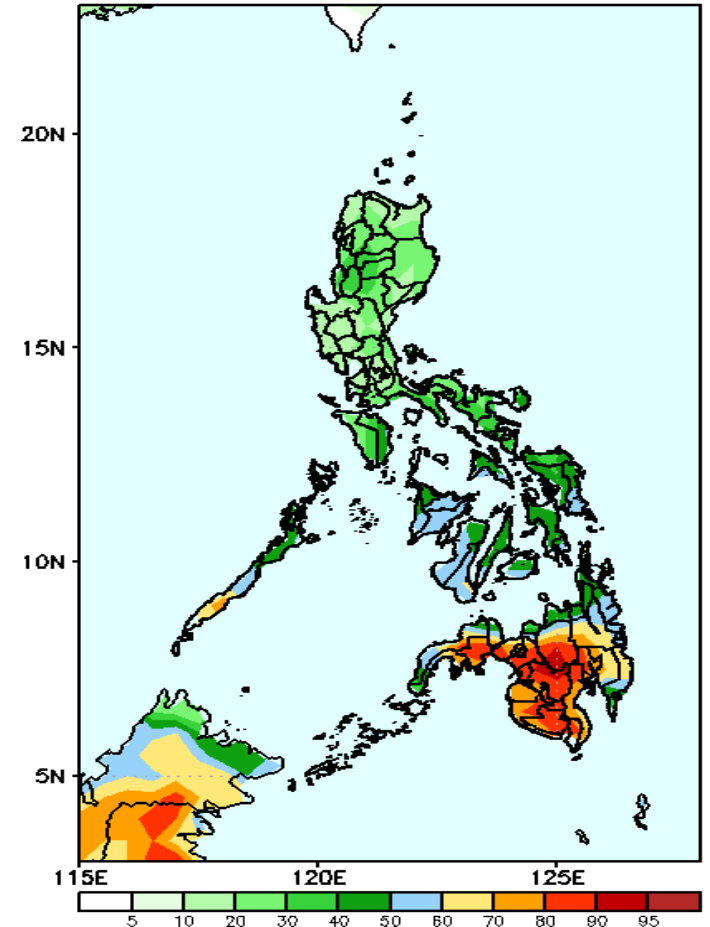
Rainfall deficit of up to 40-80mm is expected in most parts of Luzon and northern & eastern parts of Mindanao while increase of rainfall up to 60mm for the rest of the country during the forecast period.

GEFS Week-2 Exceedance Prob. > 25mm
Valid: 20210517 - 20210523



High probability of rainfall to exceed 25mm in most parts of Cordillera region, La Union, Quezon, Bicol region, MIMAROPA and most parts of Visayas and Mindanao while less likely for the remaining parts of the country during the forecast period.

GEFS Week-2 Exceedance Prob. > 50mm
Valid: 20210517 - 20210523

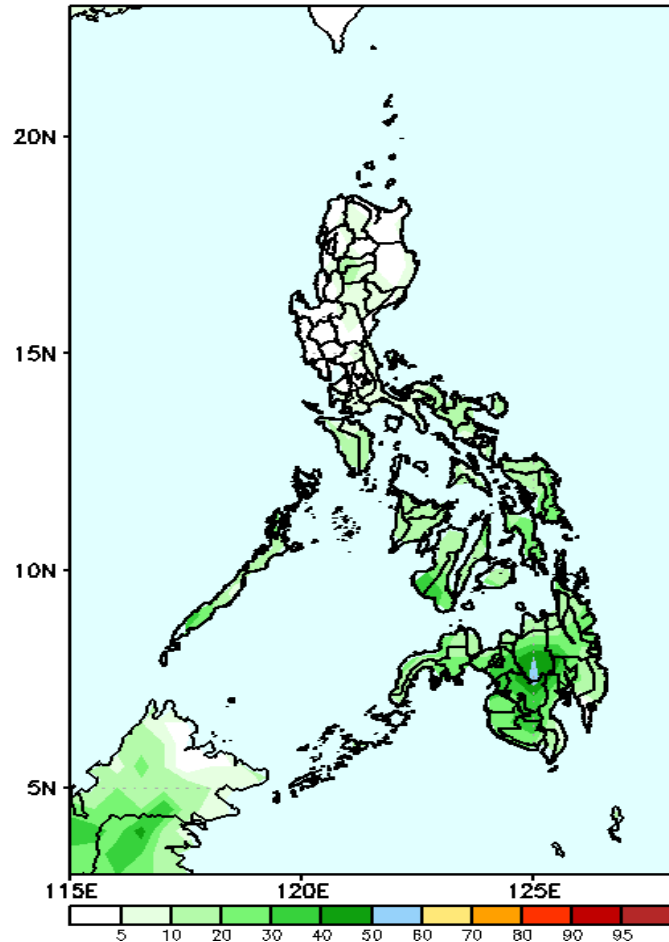


High probability of rainfall to exceed 50mm in most parts of Mindanao while less likely for the rest of the country during the forecast period.

Exceedance Probability > 100/150/200 mm

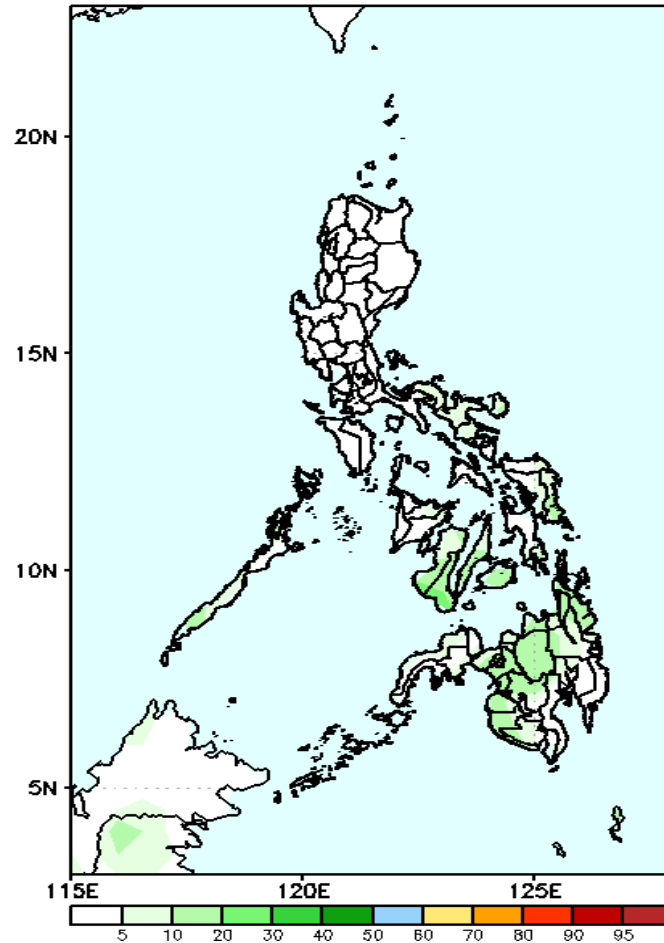
Week 2: May 17-23, 2021

GEFS Week-2 Exceedance Prob. > 100mm
Valid: 20210517 - 20210523



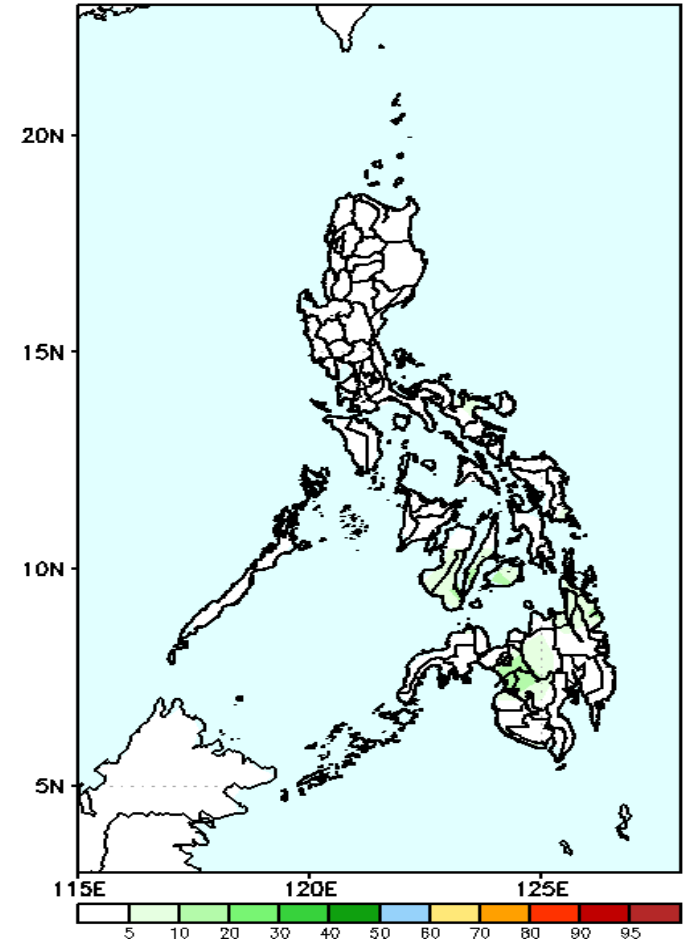
Less probability of rainfall to exceed 100mm in most parts of the country during the forecast period.

GEFS Week-2 Exceedance Prob. > 150mm
Valid: 20210517 - 20210523



Less probability of rainfall to exceed 150mm in most parts of the country during the forecast period.

GEFS Week-2 Exceedance Prob. > 200mm
Valid: 20210517 - 20210523

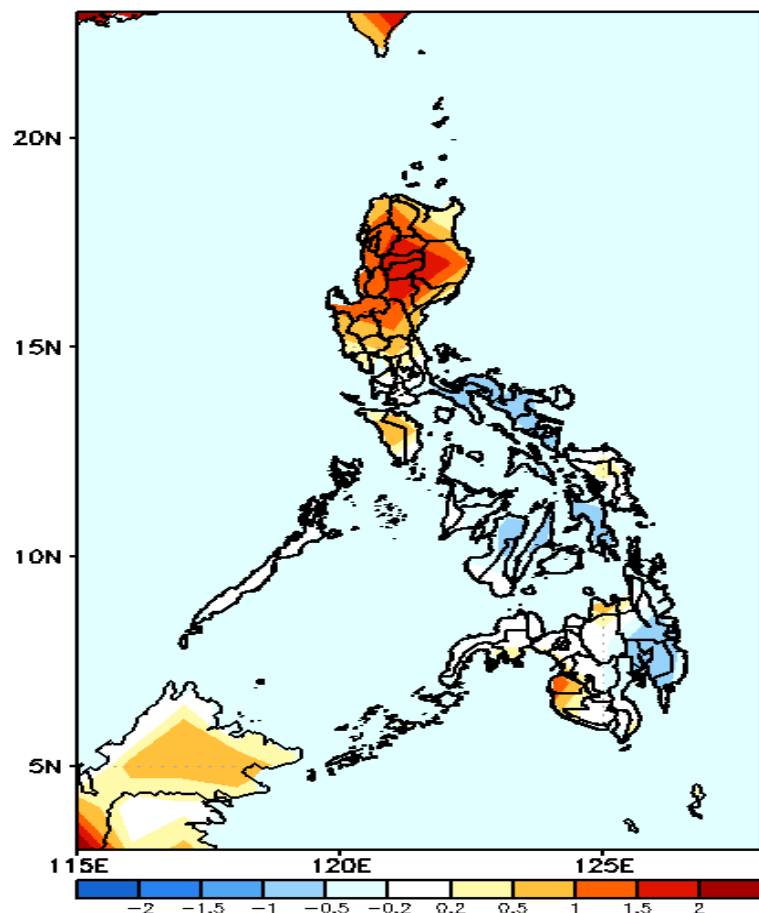


Less probability of rainfall to exceed 200mm in most parts of the country during the forecast period.



GEFS Week-1 & 2 Forecasts: T2m Anomaly

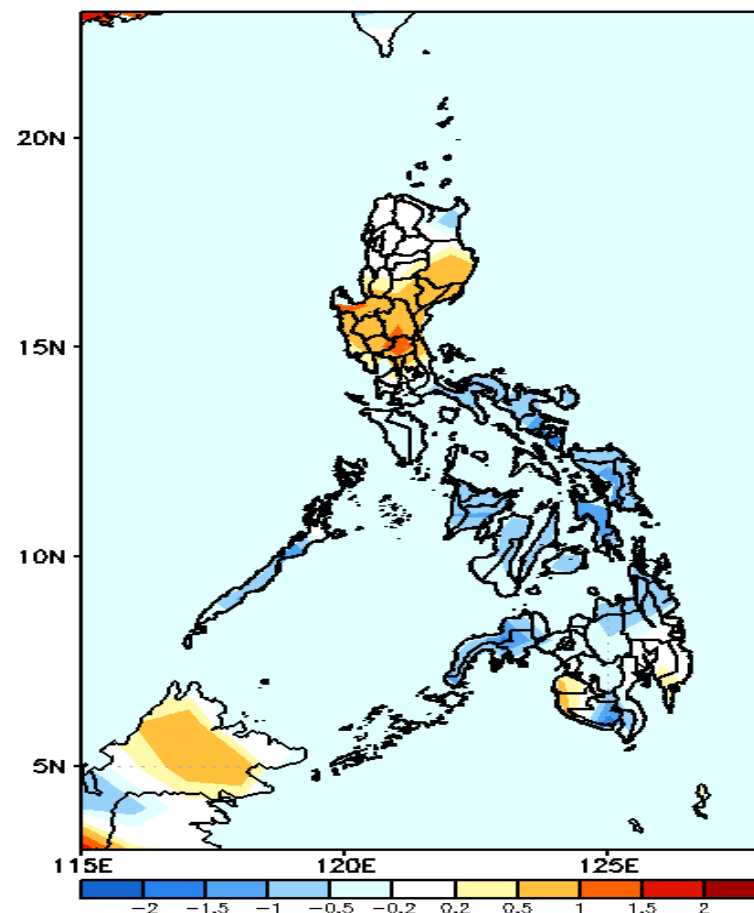
GEFS Week-1 T2m Anomaly
Valid: 20210510 – 20210516



2m Temperature Week 1: May 10-16, 2021

Warmer than average surface air temperature will likely experience in most parts of Luzon while average to slightly cooler than average for the rest of the country during the forecast period.

GEFS Week-2 T2m Anomaly
Valid: 20210517 – 20210523



2m Temperature Week 2: May 17-23, 2021

Slightly warmer to warmer than average surface air temperature will likely experience in most parts of Cagayan valley, Central & Southern Luzon while slightly cooler to cooler than average temperature for the rest of the country during the forecast period.