



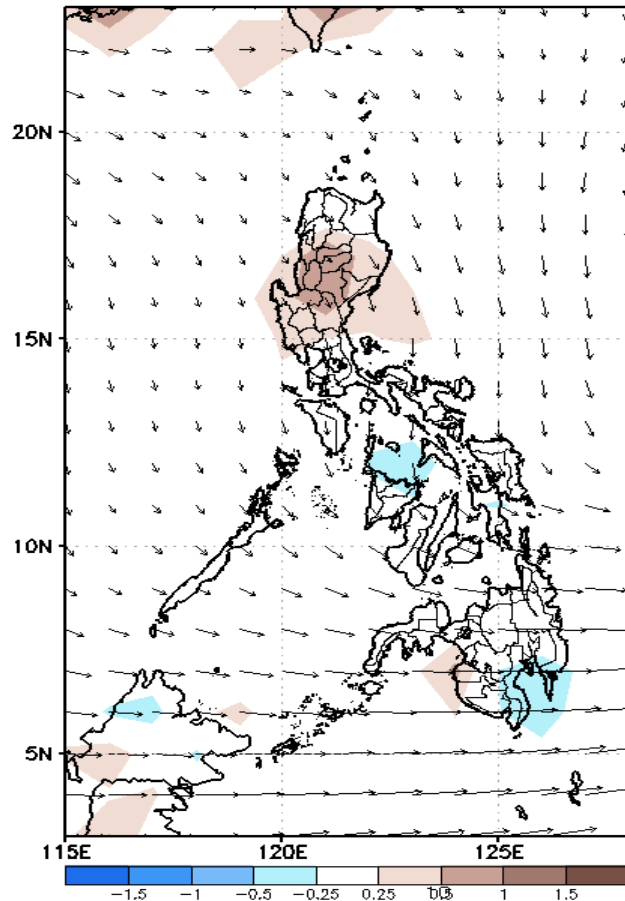
# Week 1 & Week 2 Forecast for the Philippines using GEFS Model



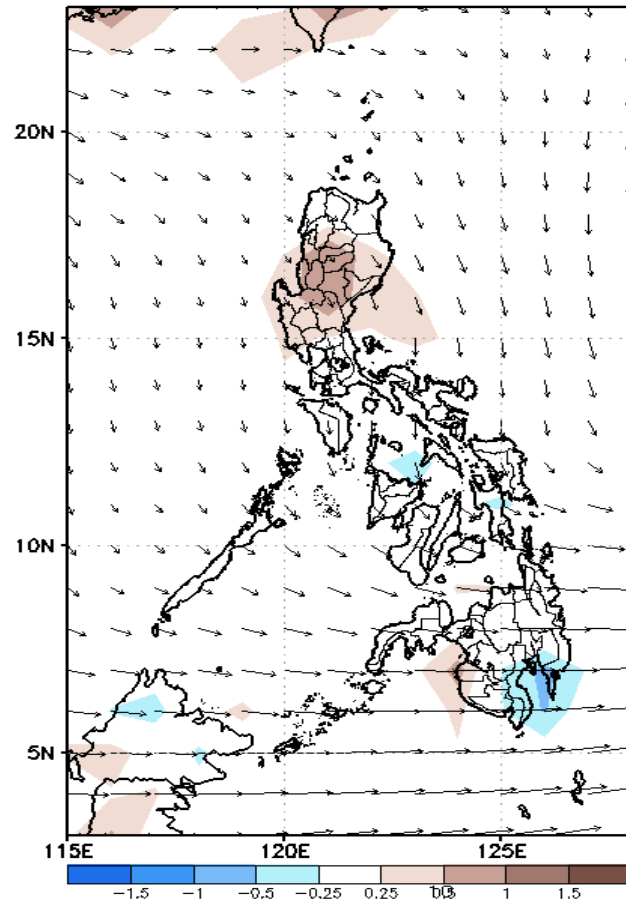
# GEFS Week-1 Forecasts: Divergence & Wind Anomaly

Week 1: Apr 11-17, 2022

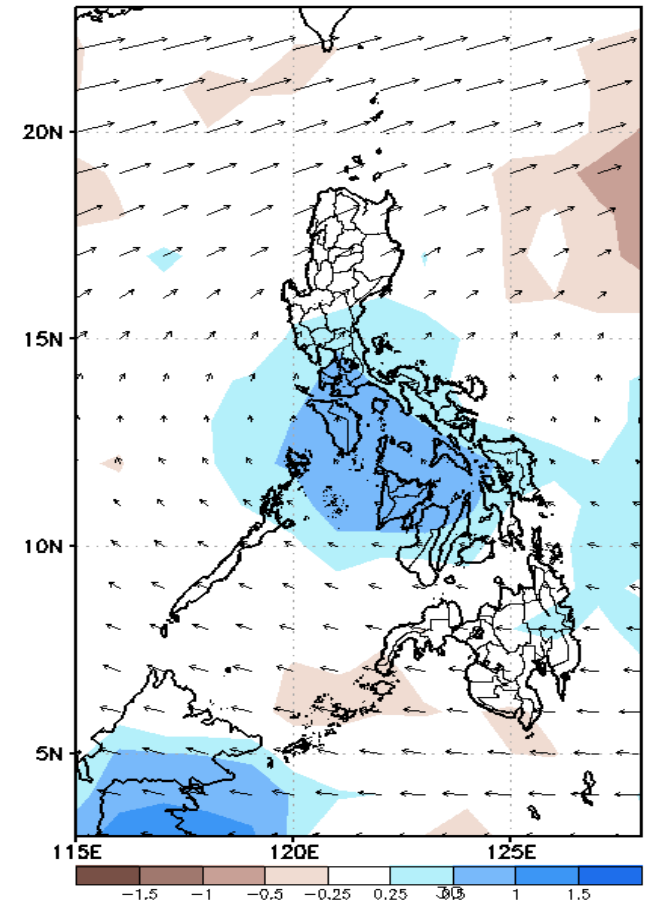
GEFS Week-1 850-hPa Divergence and Wind Anomaly  
Valid: 20220411 - 20220417



GEFS Week-1 700-hPa Divergence and Wind Anomaly  
Valid: 20220411 - 20220417



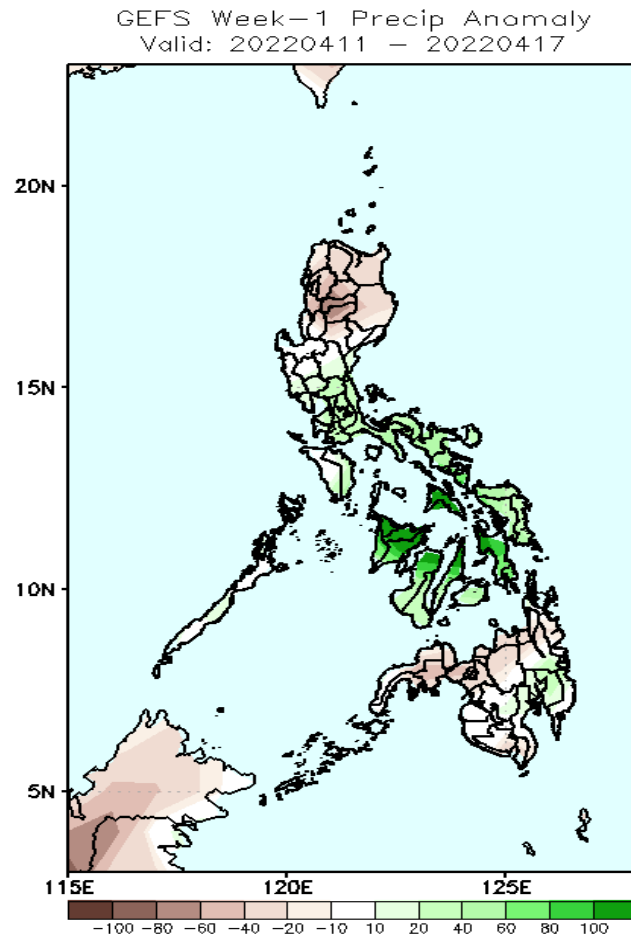
GEFS Week-1 200-hPa Divergence and Wind Anomaly  
Valid: 20220411 - 20220417



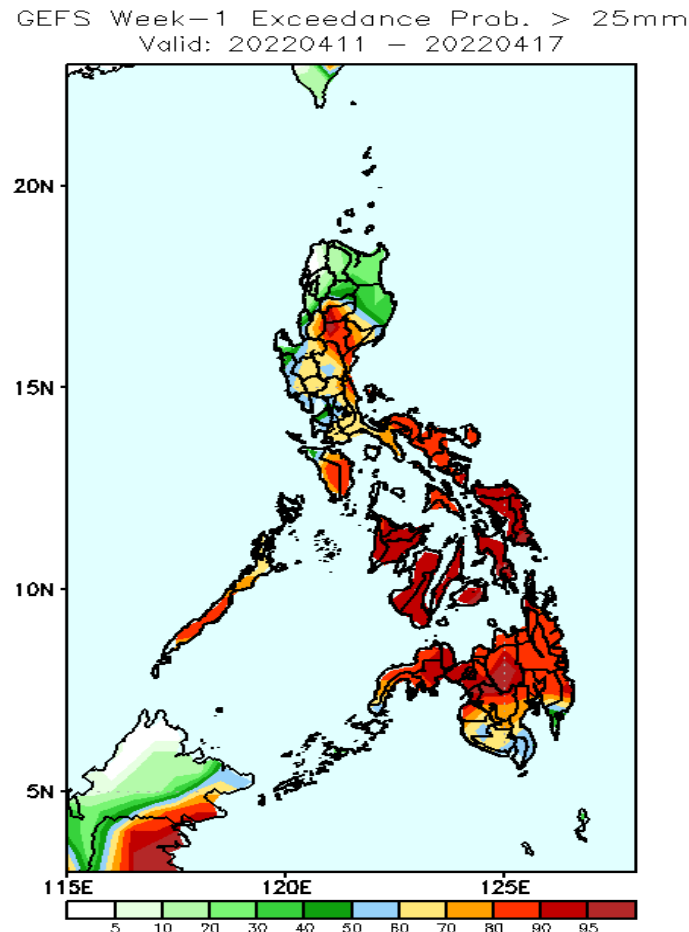
Upper and low level Divergence suggest a likelihood of light to moderate precipitation in most parts of Central and Southern Luzon and most parts of Visayas. Easterlies affecting Luzon while Westerly wind affecting Visayas and Mindanao attributing to warmer temperatures during the forecast period.

# Precipitation Anomaly and Exceedance Probability > 25/50 mm

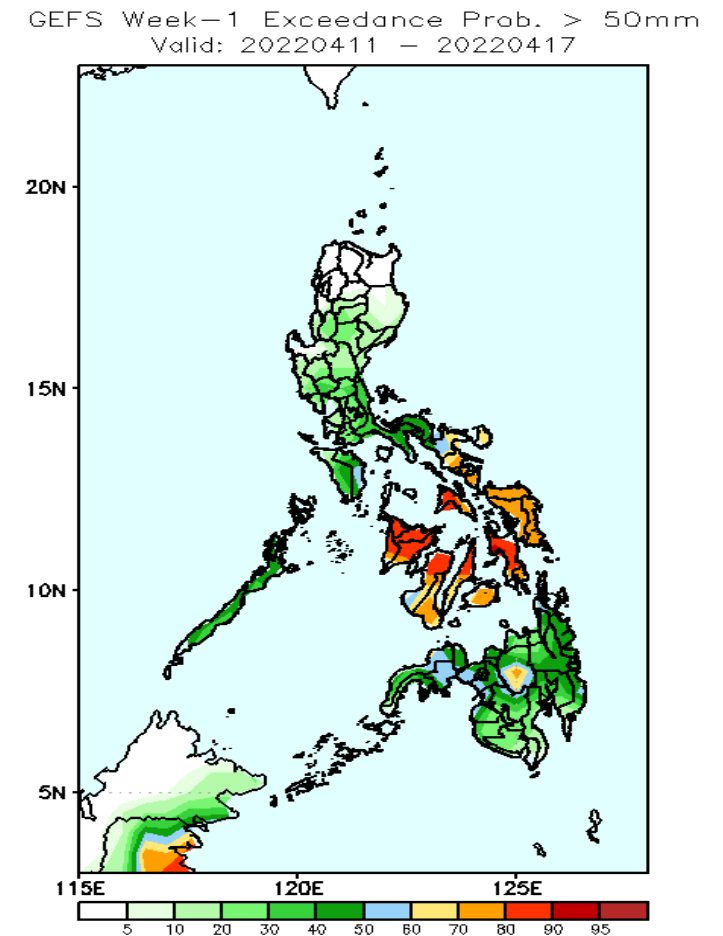
Week 1: Apr 11-17, 2022



Increase of rainfall of 60-80mm in Southern Luzon, Bicol Region, Eastern Visayas & southeastern Mindanao, more than 100mm in Central and Western Visayas while 40-80mm rainfall deficit in Northern Luzon and Northern Mindanao during the forecast period.



High probability of rainfall to exceed 25mm in most parts of the country except in northern Luzon during the forecast period.



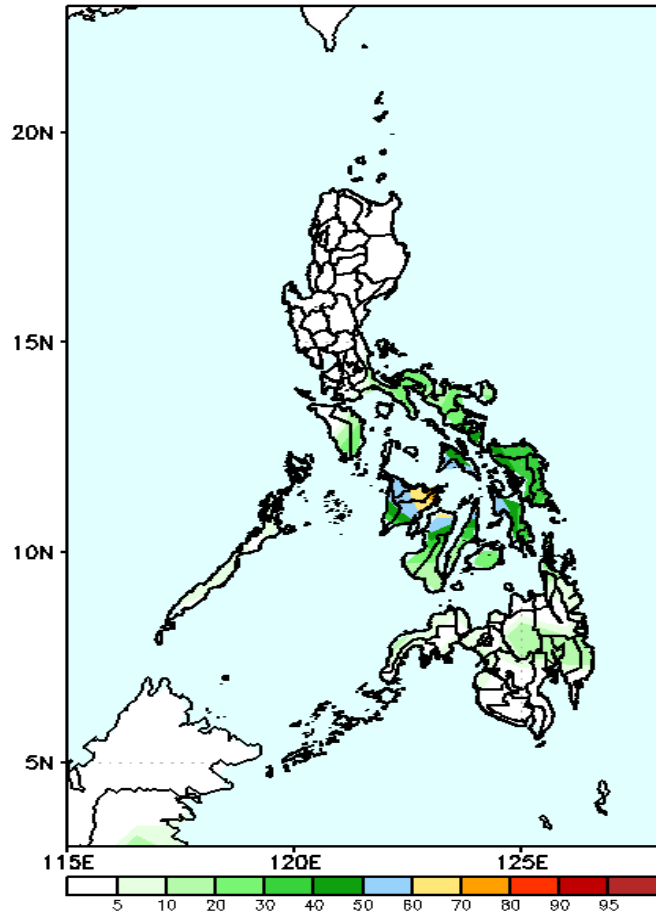
High probability of rainfall to exceed 50mm in most parts of Visayas and Bukidnon while less likely for the rest of the country during the forecast period.



# Exceedance Probability > 100/150/200 mm

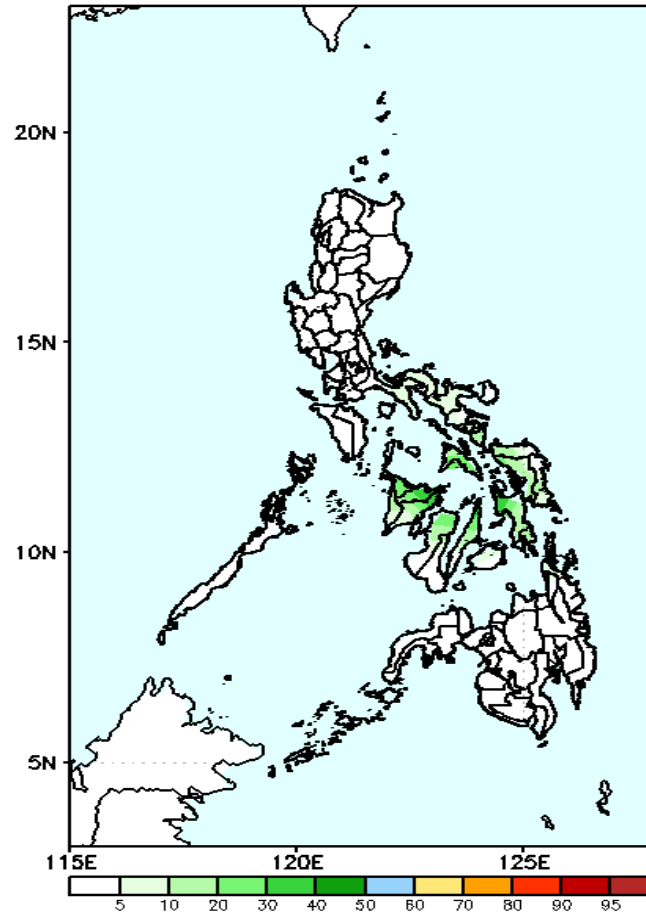
## Week 1: Apr 11-17, 2022

GEFS Week-1 Exceedance Prob. > 100mm  
Valid: 20220411 – 20220417



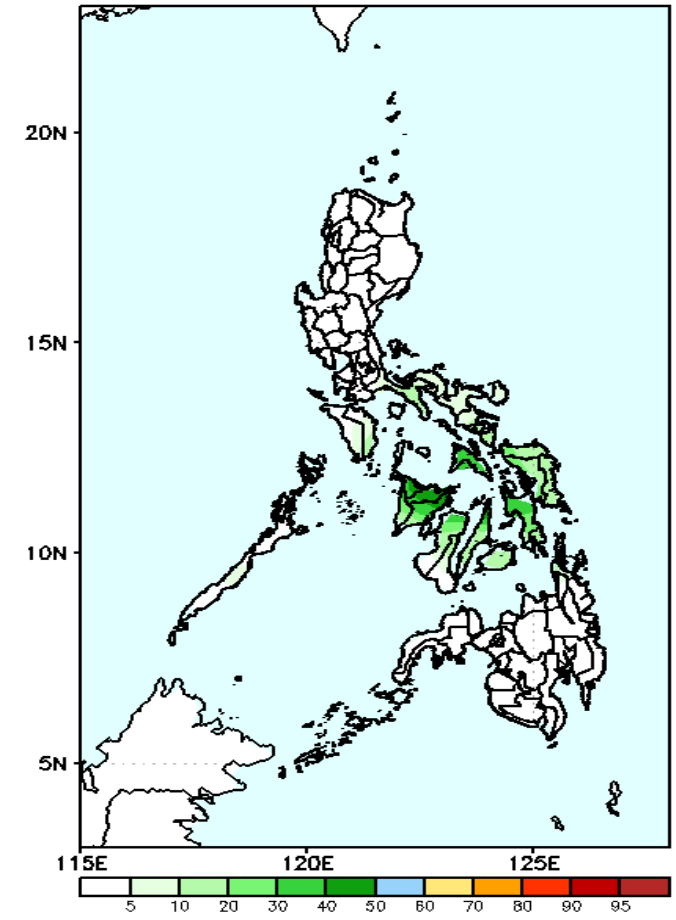
Low probability of rainfall to exceed 100mm in most parts of the country during the forecast period.

GEFS Week-1 Exceedance Prob. > 200mm  
Valid: 20220411 – 20220417



Low probability of rainfall to exceed 150mm in most parts of the country during the forecast period.

GEFS Week-1 Exceedance Prob. > 150mm  
Valid: 20220411 – 20220417



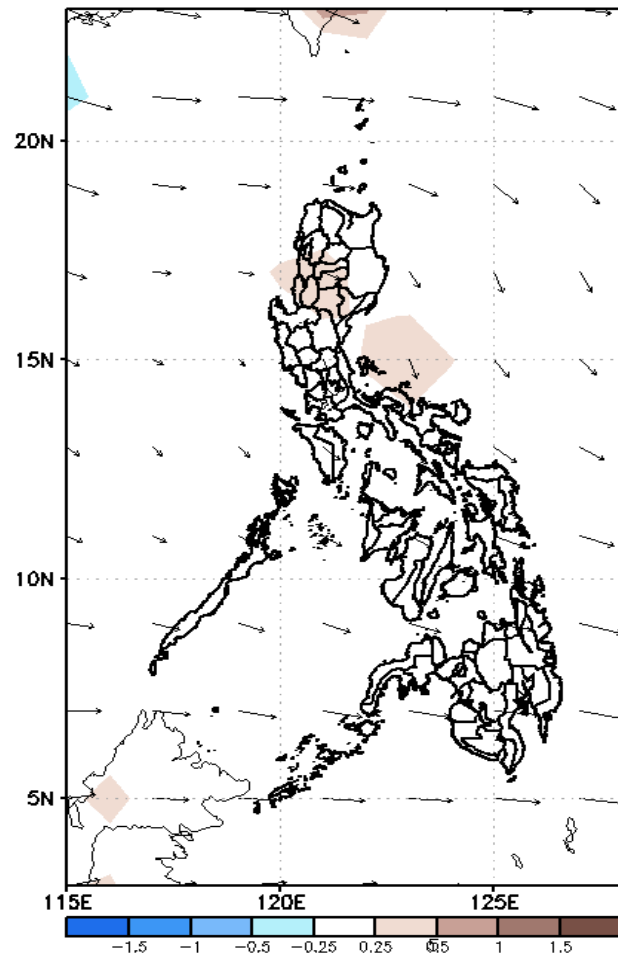
Low probability of rainfall to exceed 200mm in most parts of the country during the forecast period.



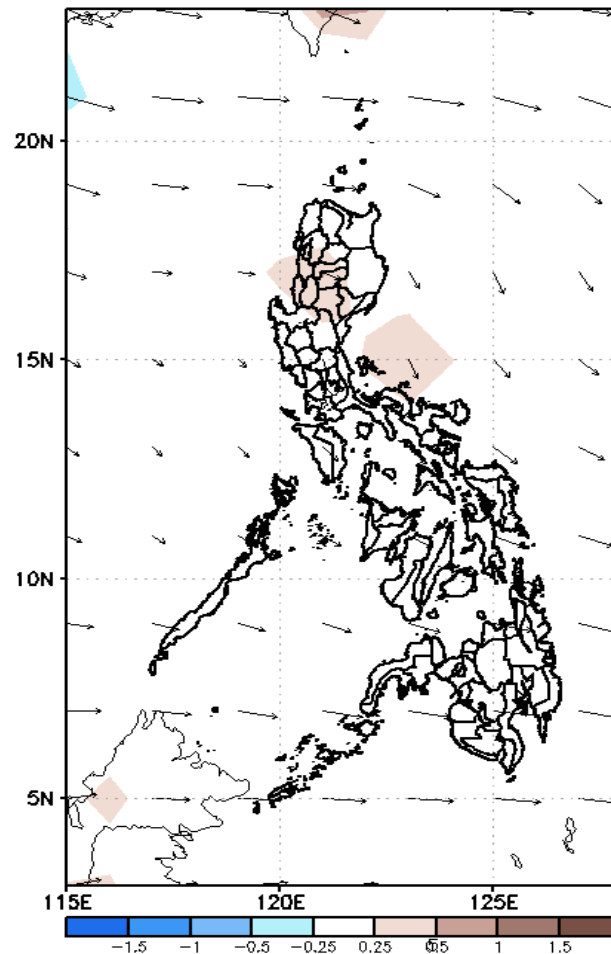
# GEFS Week-2 Forecasts: Divergence & Wind Anomaly

**Week 2: Apr 18-24, 2022**

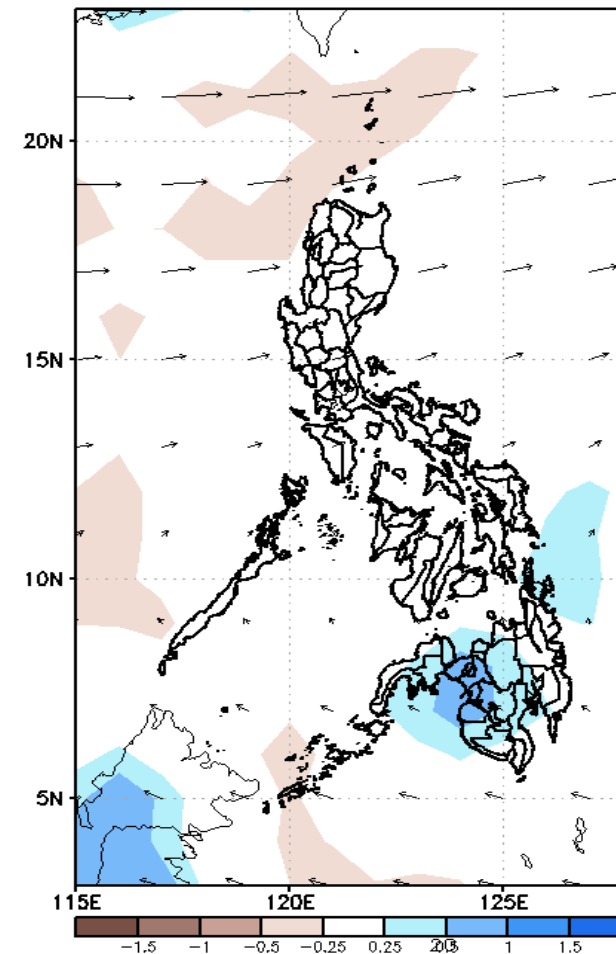
GEFS Week-2 850-hPa Divergence and Wind Anom  
Valid: 20220418 - 20220424



GEFS Week-2 700-hPa Divergence and Wind Anom  
Valid: 20220418 - 20220424



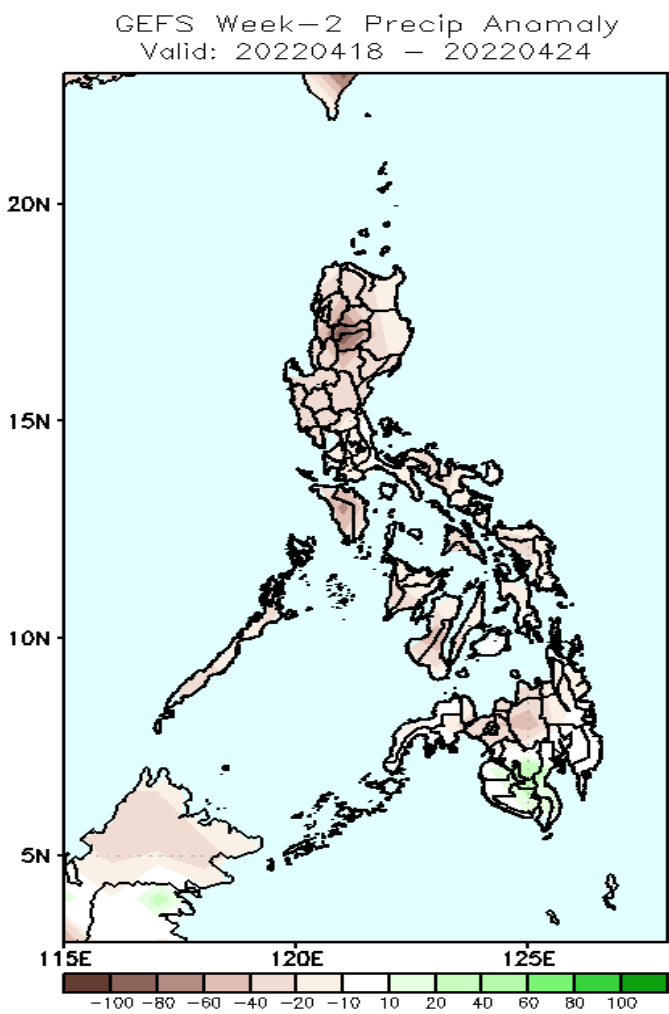
GEFS week-2 200-hPa Divergence and Wind Anom  
Valid: 20220418 - 20220424



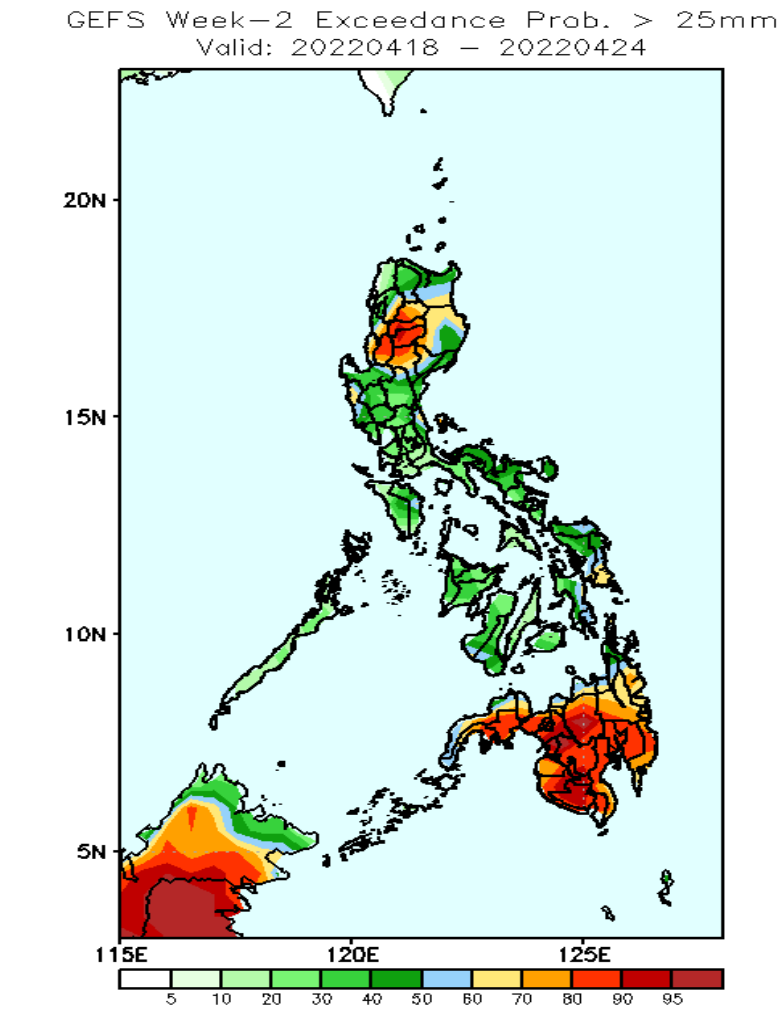
Upper and low level Divergence suggest a likelihood precipitation in Central and Eastern Mindanao due to localized thunderstorms. Easterlies affecting most parts of the country attributing to warmer temperatures during the forecast period.

# Precipitation Anomaly and Exceedance Probability > 25/50 mm

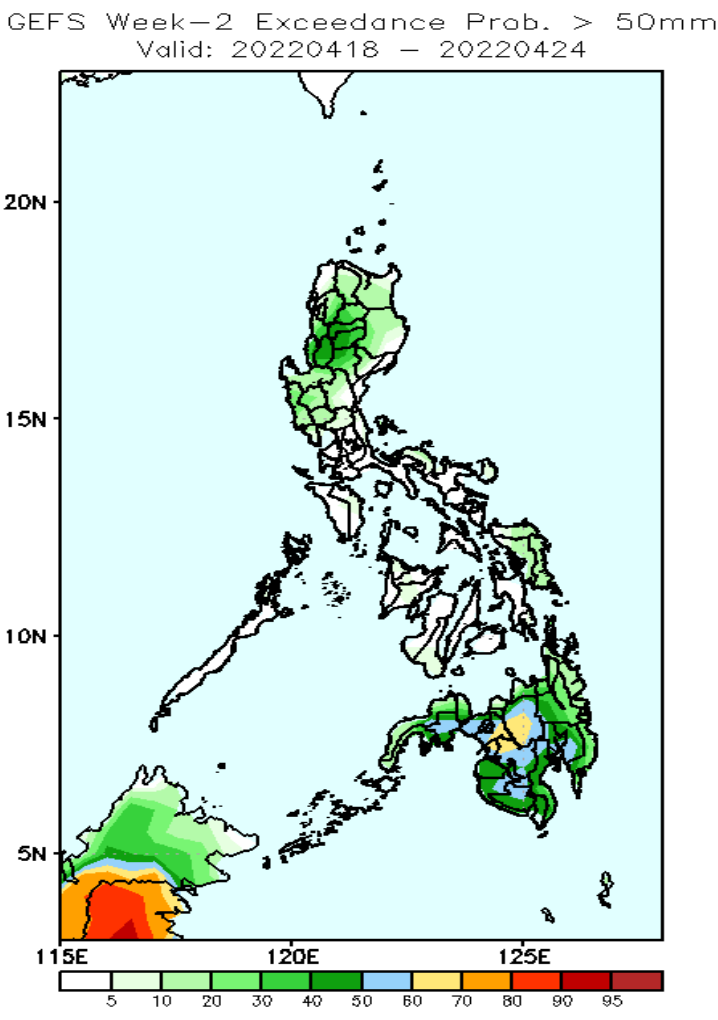
Week 2: Apr 18-24, 2022



Rainfall deficit of 40-80mm in most parts of the country during the forecast period.



High probability of rainfall to exceed 25mm in most parts of Cordillera Region, Nueva Viscaya and most parts of Mindanao while less likely for the rest of the country during the forecast period.



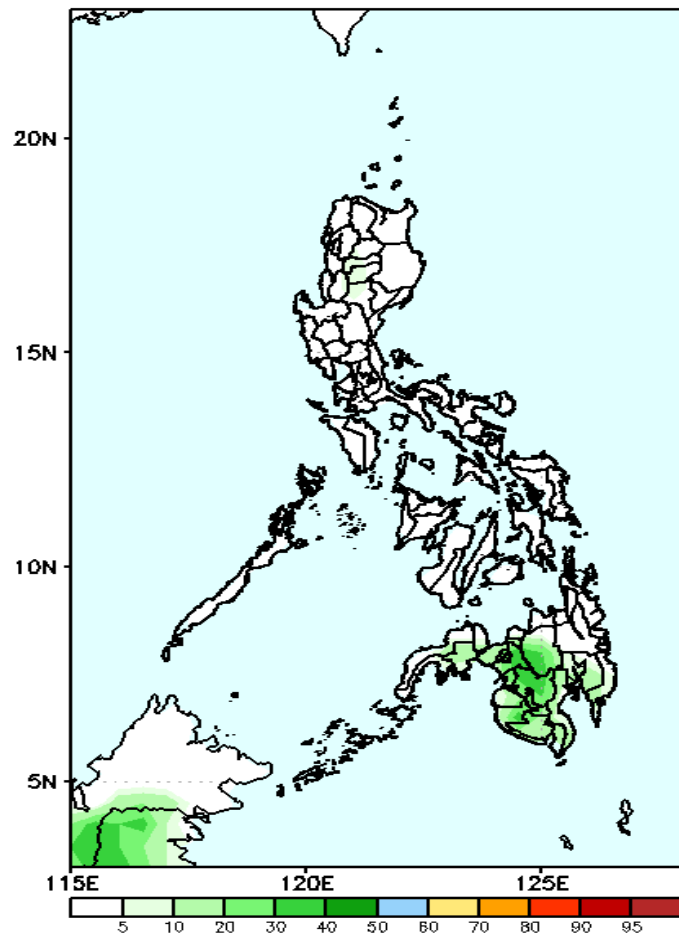
Low probability of rainfall to exceed 50mm in most parts of the country during the forecast period.



# Exceedance Probability > 100/150/200 mm

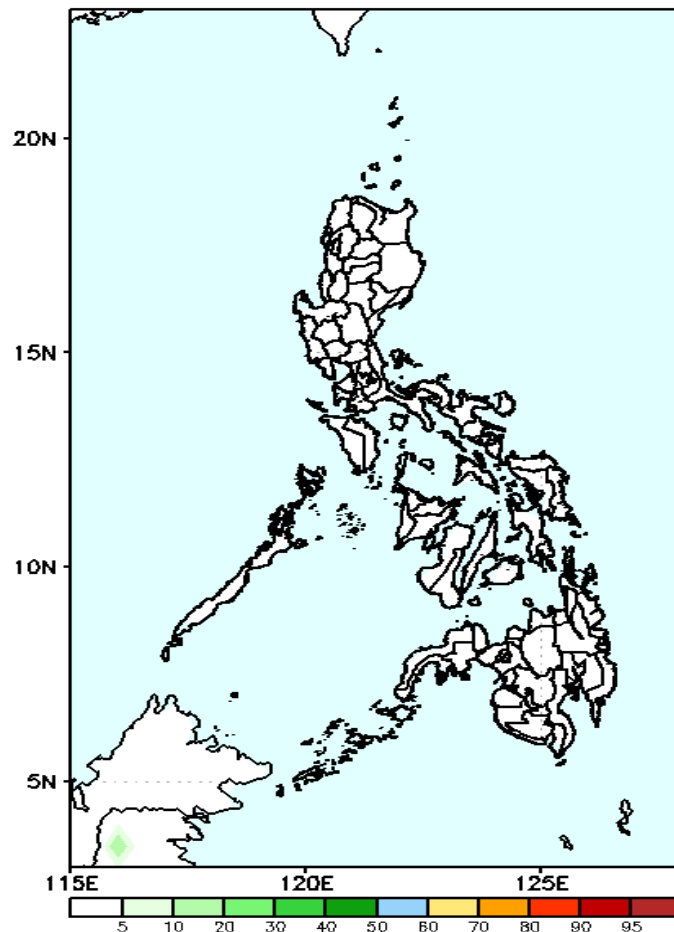
**Week 2: Apr 18-24, 2022**

GEFS Week-2 Exceedance Prob. > 100mm  
Valid: 20220418 - 20220424



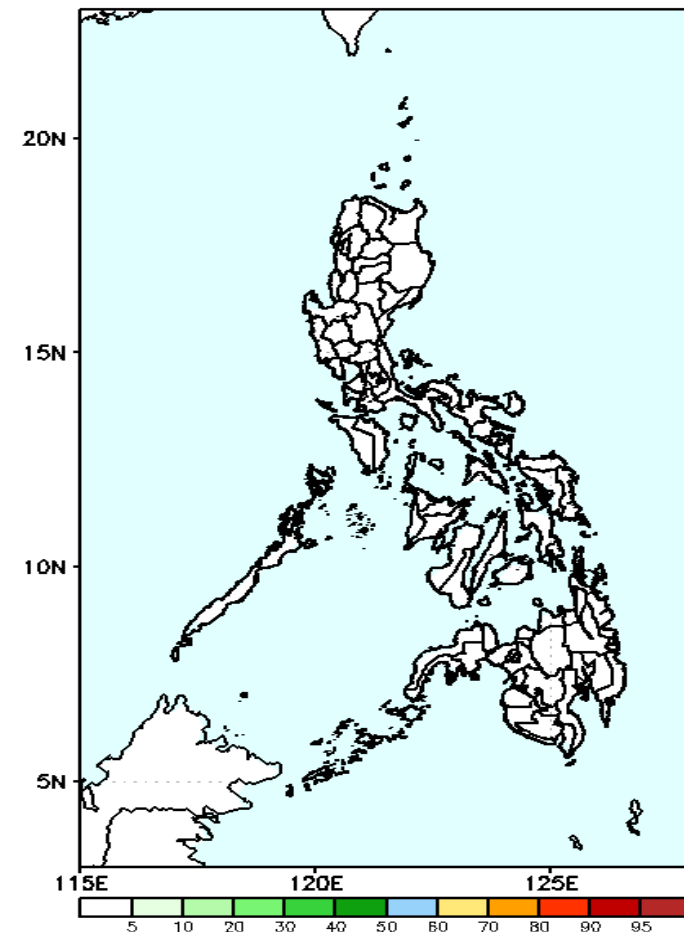
Low probability of rainfall to exceed 100mm in most parts of the country during the forecast period.

GEFS Week-2 Exceedance Prob. > 150mm  
Valid: 20220418 - 20220424



Low probability of rainfall to exceed 150mm in most parts of the country during the forecast period.

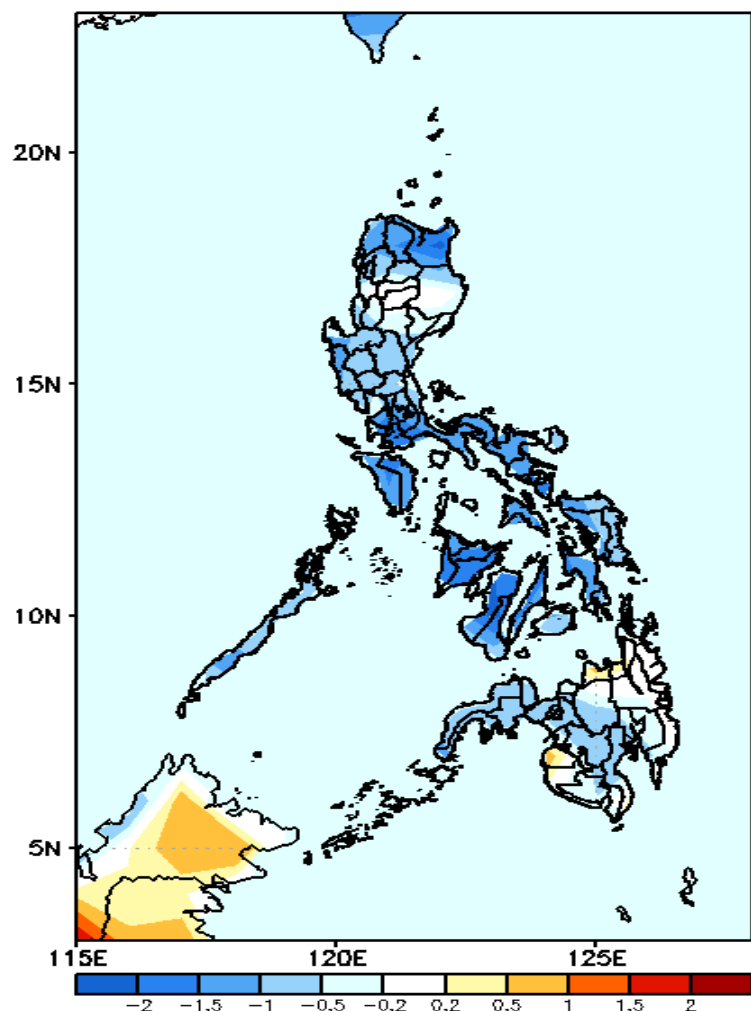
GEFS Week-2 Exceedance Prob. > 200mm  
Valid: 20220418 - 20220424



Low probability of rainfall to exceed 200mm in most parts of the country during the forecast period.

# GEFS Week-1 & 2 Forecasts: T2m Anomaly

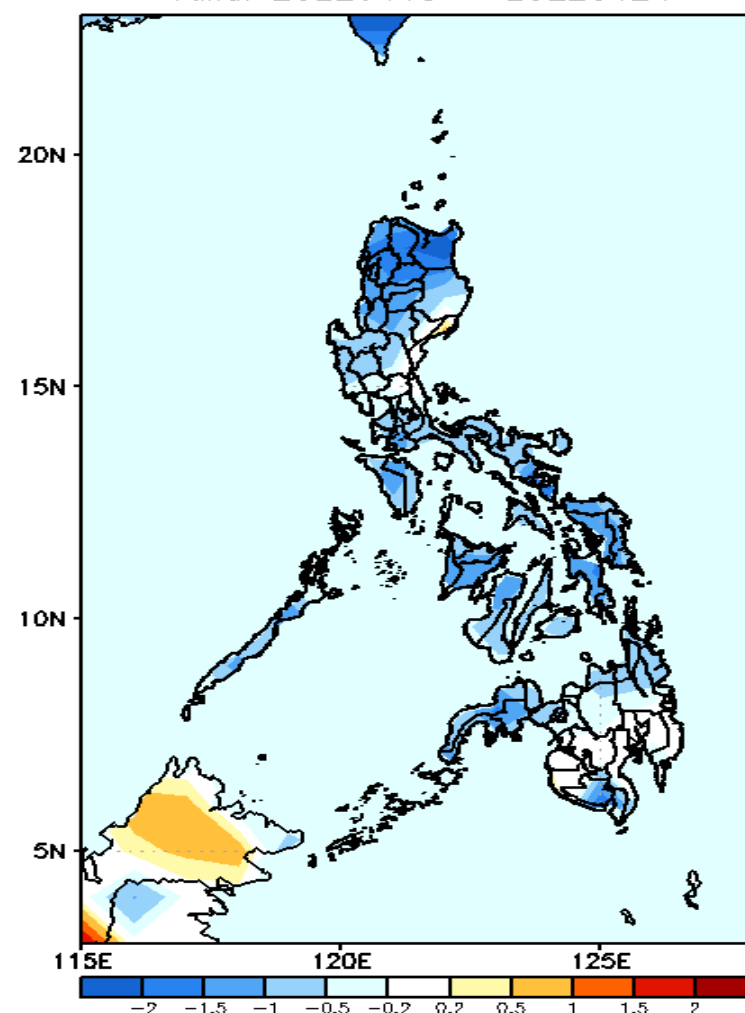
GEFS Week-1 T2m Anomaly  
Valid: 20220411 – 20220417



## 2m Temperature Week 1: Apr 11-17, 2022

Cooler than average surface air temperature will likely experience in most parts of Luzon and Visayas while average to slightly cooler in Mindanao during the forecast period.

GEFS Week-2 T2m Anomaly  
Valid: 20220418 – 20220424



## 2m Temperature Week 2: Apr 18-24, 2022

Cooler than average surface air temperature will likely experience in most parts of Luzon & Visayas and in Zamboanga Peninsula & South Cotabato while average to slightly cooler for the rest of Mindanao during the forecast period.