



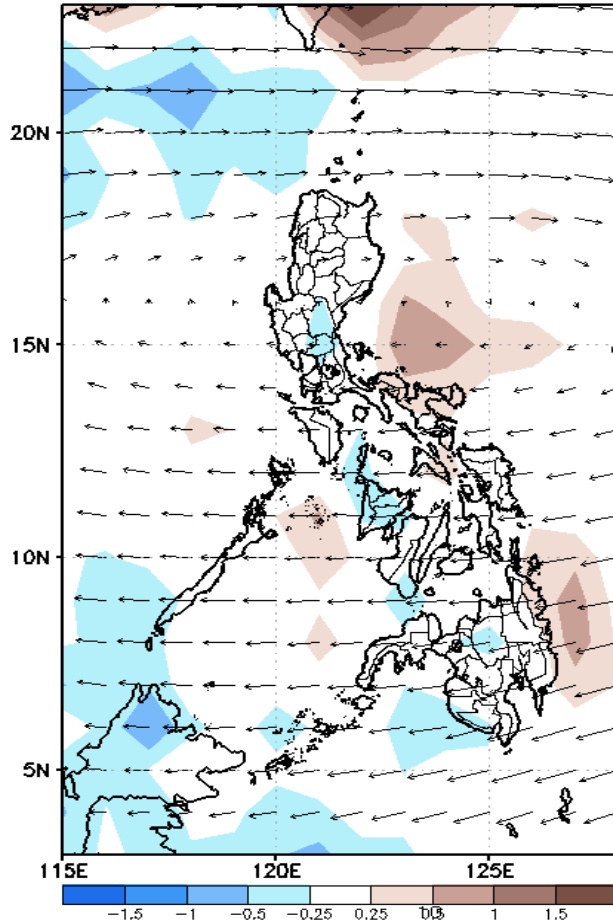
Week 1 & Week 2 Forecast for the Philippines using GEFS Model



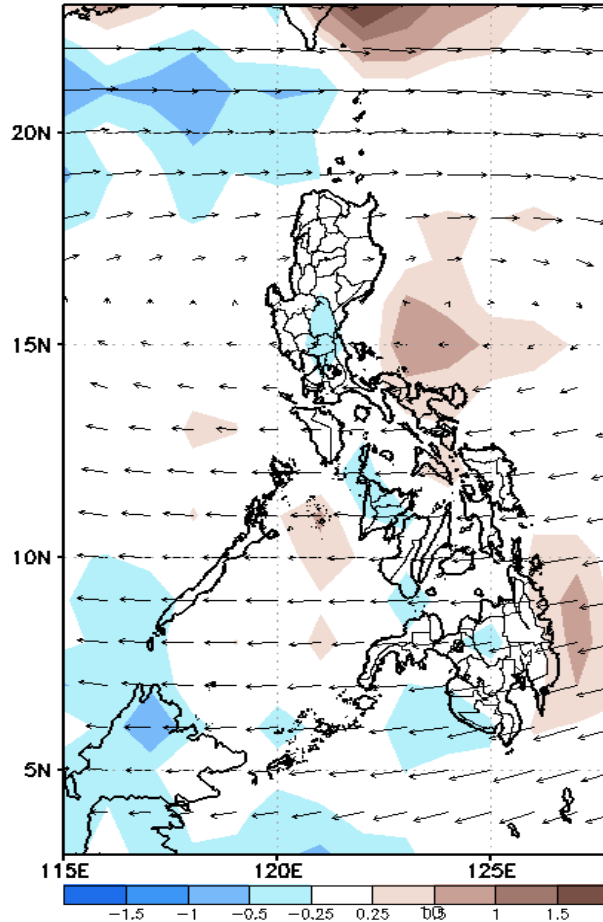
GEFS Week-1 Forecasts: Divergence & Wind Anomaly

Week 1: Feb 11-17, 2022

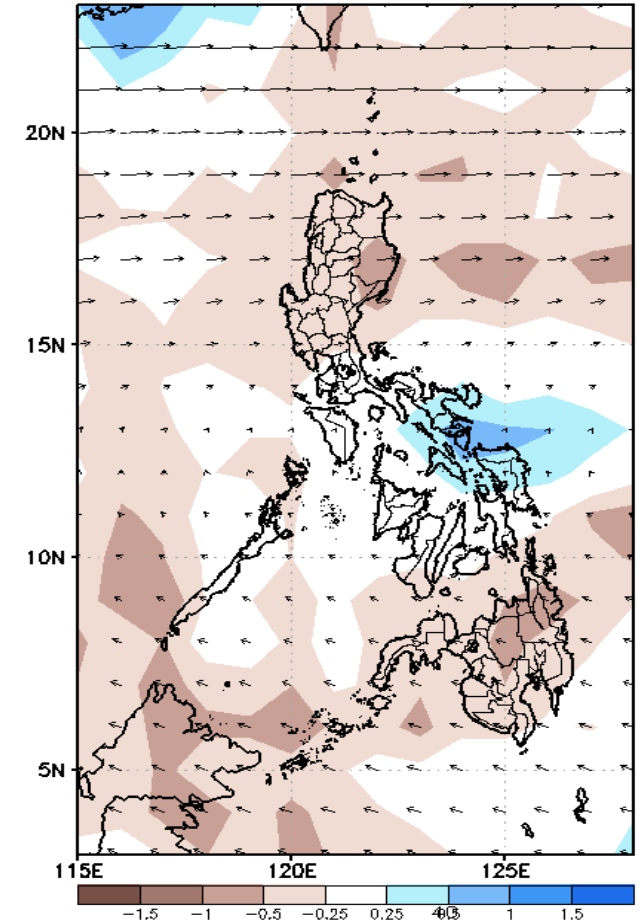
GEFS Week-1 850-hPa Divergence and Wind Anom
Valid: 20220211 - 20220217



GEFS Week-1 700-hPa Divergence and Wind Anom
Valid: 20220211 - 20220217



GEFS Week-1 200-hPa Divergence and Wind Anom
Valid: 20220211 - 20220217

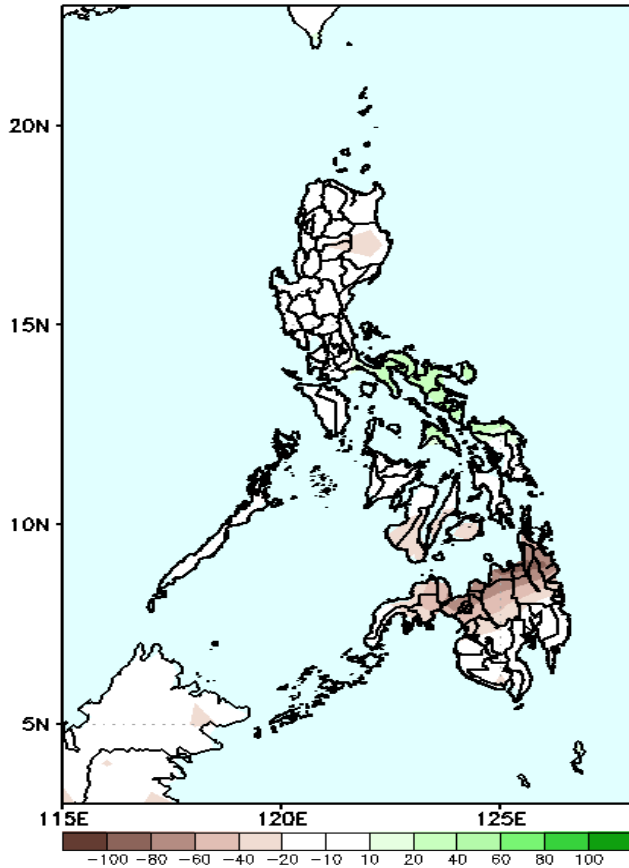


Upper and low level Divergence suggest a likelihood of light to moderate precipitation in most parts of Bicol Region. Easterlies affecting the rest of the country during the forecast period.

Precipitation Anomaly and Exceedance Probability > 25/50 mm

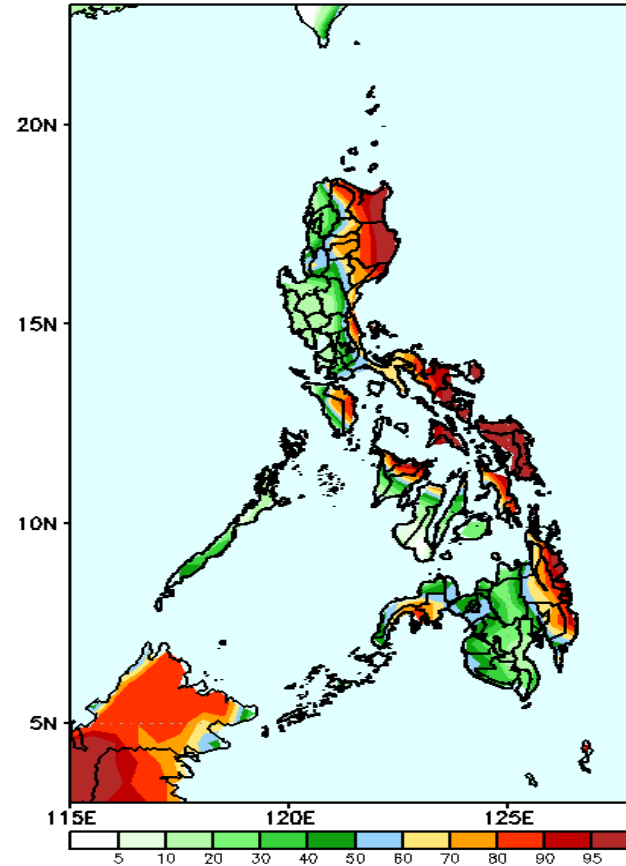
Week 1: Feb 11-17, 2022

GEFS Week-1 Precip Anomaly
Valid: 20220211 - 20220217



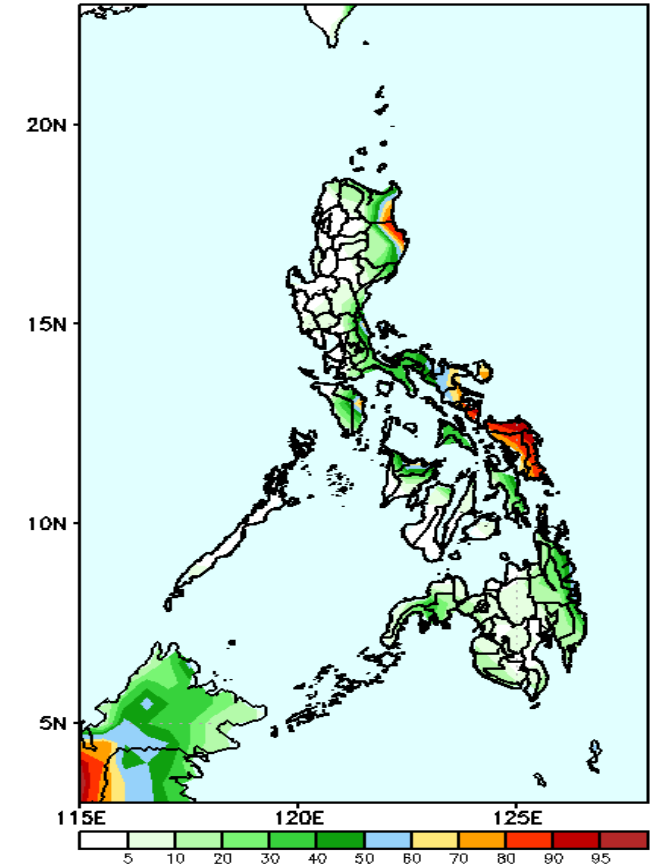
Rainfall deficit of 10-20mm in Isabela and western Visayas and 40-80mm in northern Mindanao while 20-40mm increase of rainfall in Bicol Region during the forecast period.

GEFS Week-1 Exceedance Prob. > 25mm
Valid: 20220211 - 20220217



High probability of rainfall to exceed 25mm in CAR, most parts of Eastern Luzon, Mindoro oriental, Eastern Visayas, Aklan, Capiz, most parts of Eastern Mindanao and Zamboanga del Sur while less likely for the rest of the country during the forecast period.

GEFS Week-1 Exceedance Prob. > 50mm
Valid: 20220211 - 20220217

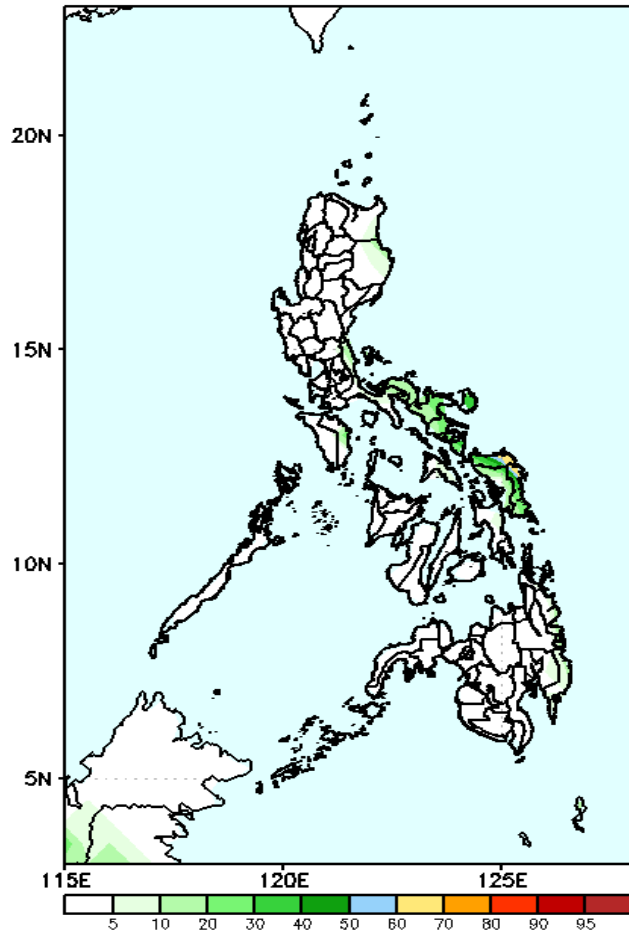


60 – 90% probability of rainfall to exceed 50mm in the eastern parts of Isabela and Cagayan, Albay, Sorsogon and Samar provinces while less likely for the rest of the country during the forecast period.

Exceedance Probability > 100/150/200 mm

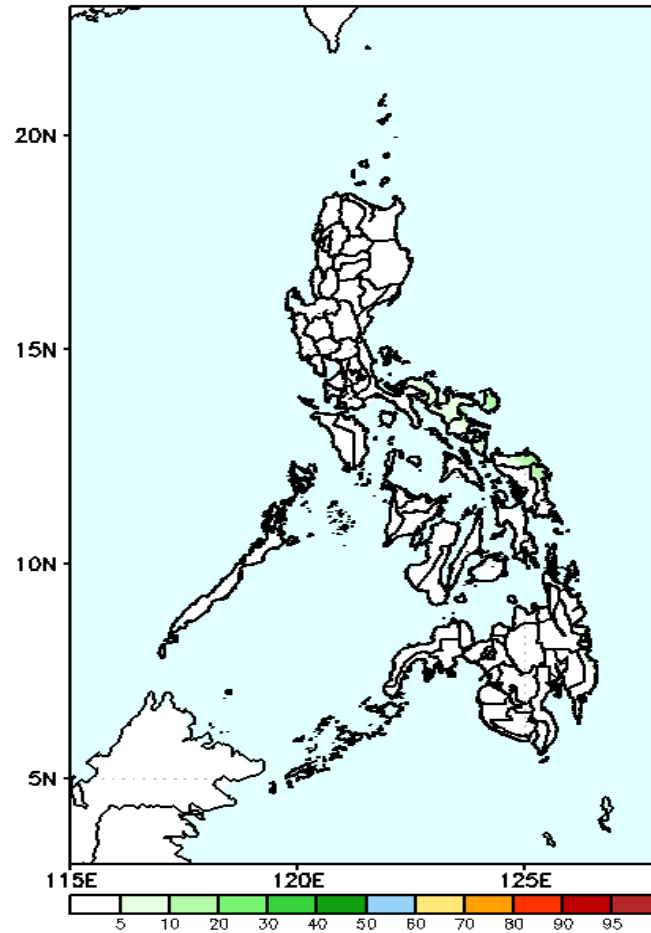
Week 1: Feb 11-17, 2022

GEFS Week-1 Exceedance Prob. > 100mm
Valid: 20220211 - 20220217



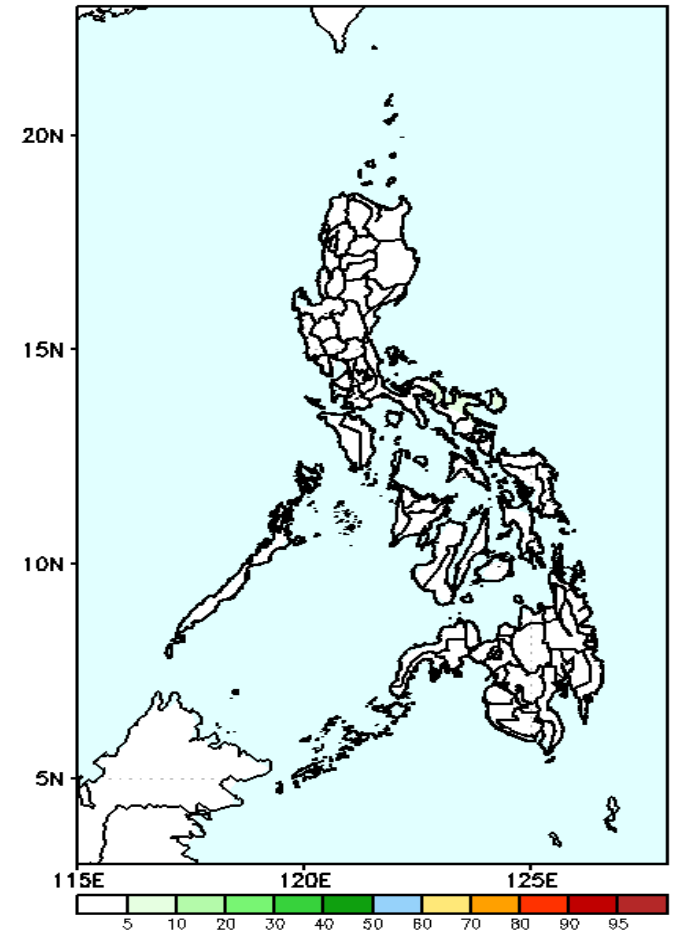
Low probability of rainfall to exceed 100mm in most parts of the country during the forecast period.

GEFS Week-1 Exceedance Prob. > 150mm
Valid: 20220211 - 20220217



Low probability of rainfall to exceed 150mm in most parts of the country during the forecast period.

GEFS Week-1 Exceedance Prob. > 200mm
Valid: 20220211 - 20220217

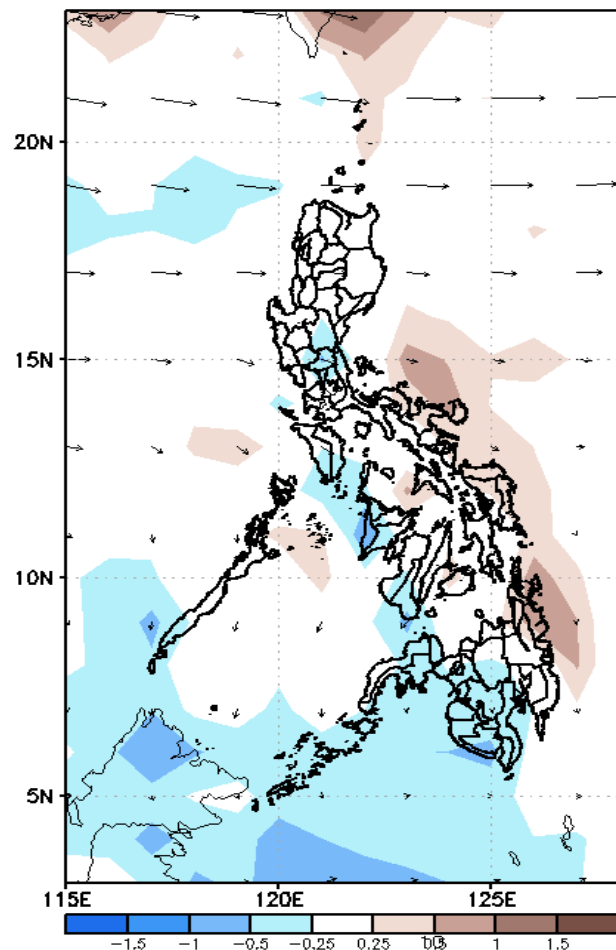


Low probability of rainfall to exceed 200mm in most parts of the country during the forecast period.

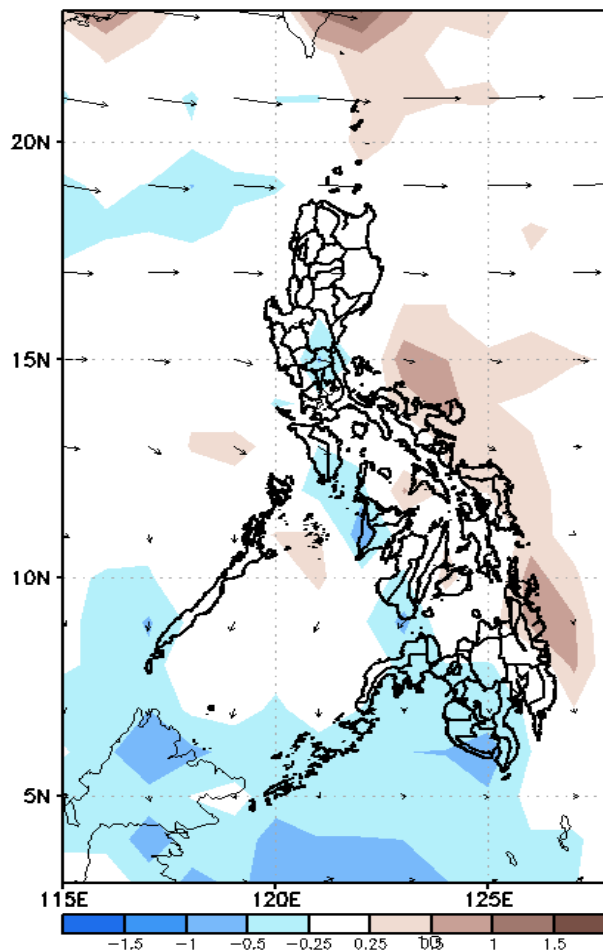
GEFS Week-2 Forecasts: Divergence & Wind Anomaly

Week 2: Feb 18-24, 2022

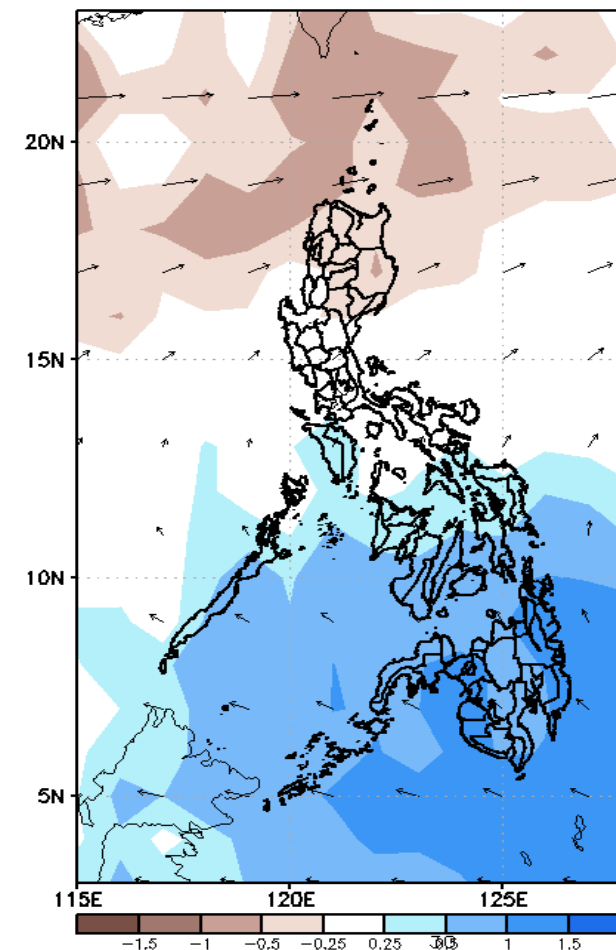
GEFS Week-2 850-hPa Divergence and Wind Anom
Valid: 20220218 - 20220224



GEFS Week-2 700-hPa Divergence and Wind Anom
Valid: 20220218 - 20220224



GEFS week-2 200-hPa Divergence and Wind Anom
Valid: 20220218 - 20220224

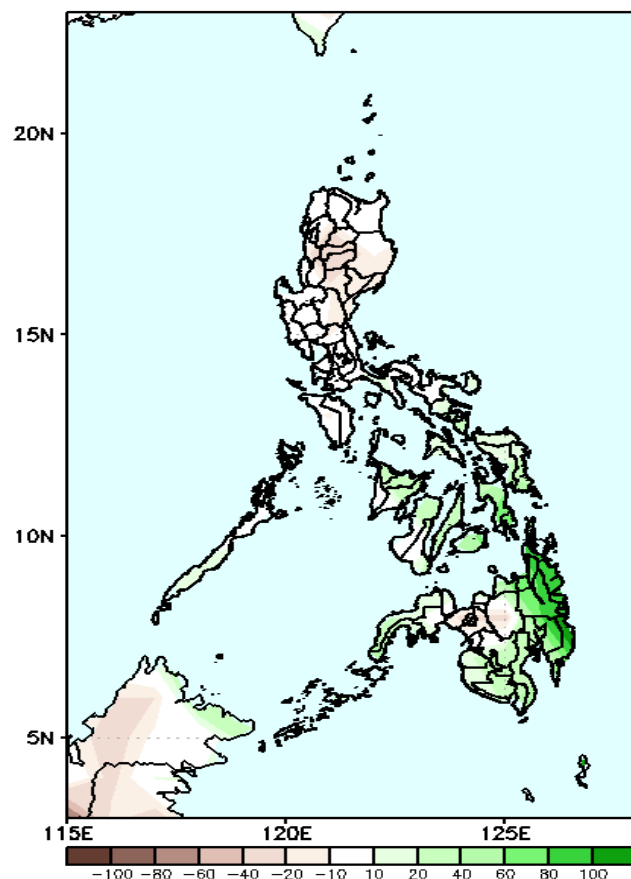


Upper and low level Divergence suggest a likelihood of light to moderate precipitation in Sorsogon, MIMAROPA, Palawan and most parts of Visayas and Mindanao. Northeast monsoon affecting Northern Luzon while Easterlies affecting the rest of the country during the forecast period.

Precipitation Anomaly and Exceedance Probability > 25/50 mm

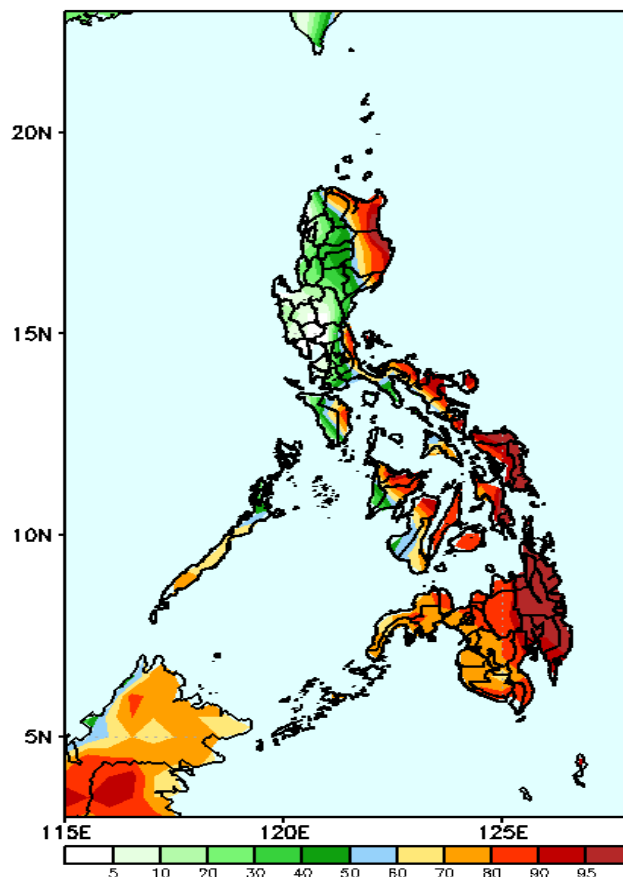
Week 2: Feb 18-24, 2022

GEFS Week-2 Precip. Anomaly
Valid: 20220218 - 20220224



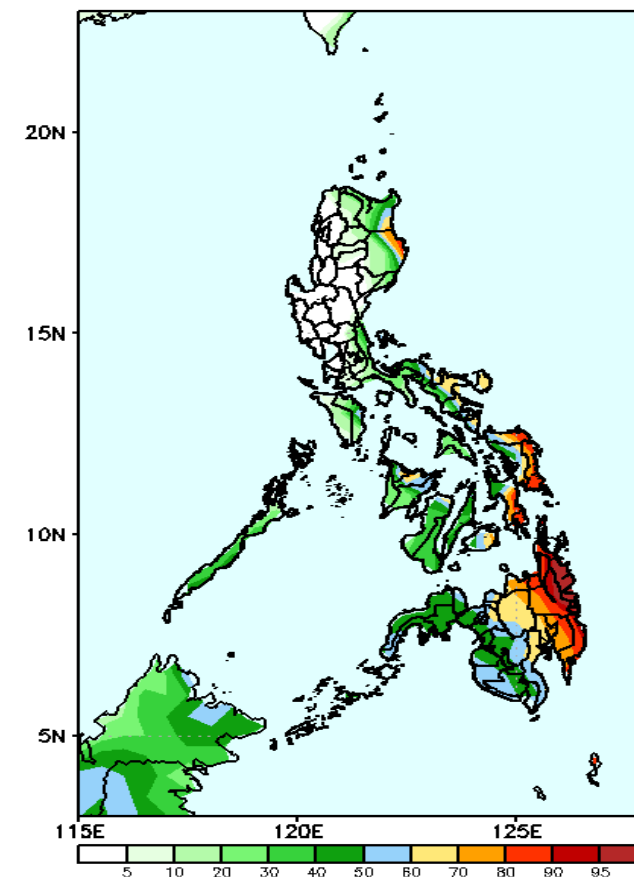
Increase of rainfall of 40-80mm is expected in most parts of central Visayas and most parts of Mindanao during the forecast period.

GEFS Week-2 Exceedance Prob. > 25mm
Valid: 20220218 - 20220224



High probability of rainfall to exceed 25mm in Apayao, Cagayan, Isabela, Quezon, Bicol Region, Mindoro Oriental, Palawan and most parts of Visayas and Mindanao while less likely for the rest of the country during the forecast period.

GEFS Week-2 Exceedance Prob. > 50mm
Valid: 20220218 - 20220224

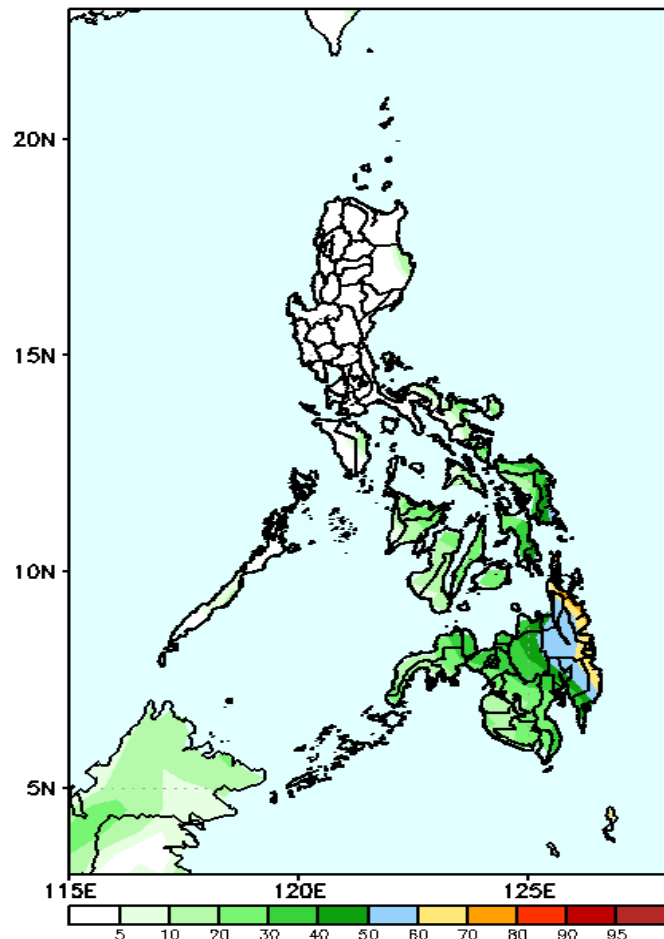


60-90% probability of rainfall to exceed 50mm in the eastern parts of Isabela and Cagayan, Camarines Sur, Catanduanes, Eastern Visayas, Bohol and most parts of Eastern & northern Mindanao while less likely for the rest of the country during the forecast period.

Exceedance Probability > 100/150/200 mm

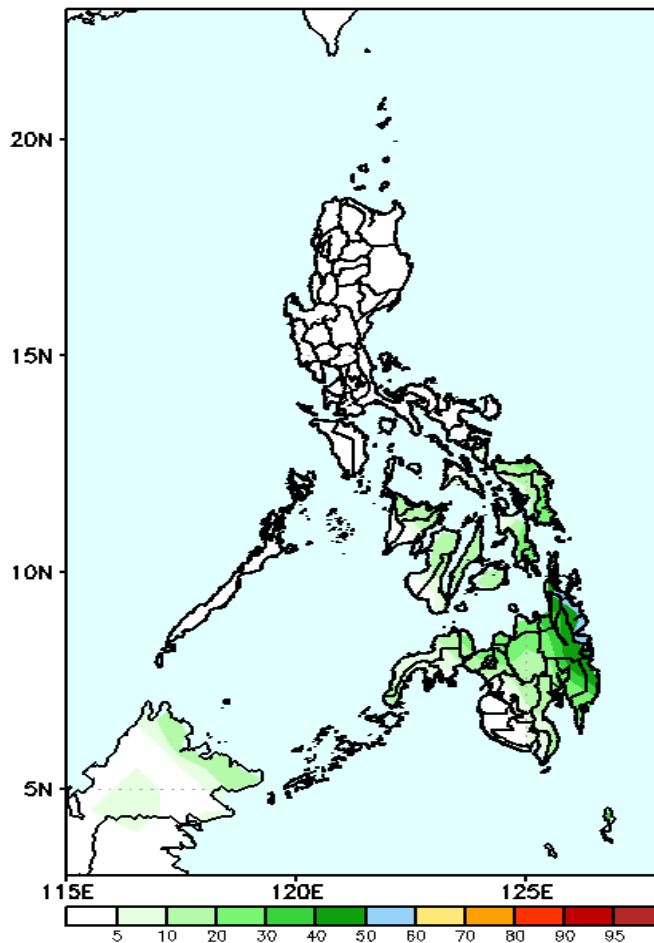
Week 2: Feb 18-24, 2022

GEFS Week-2 Exceedance Prob. > 100mm
Valid: 20220218 - 20220224



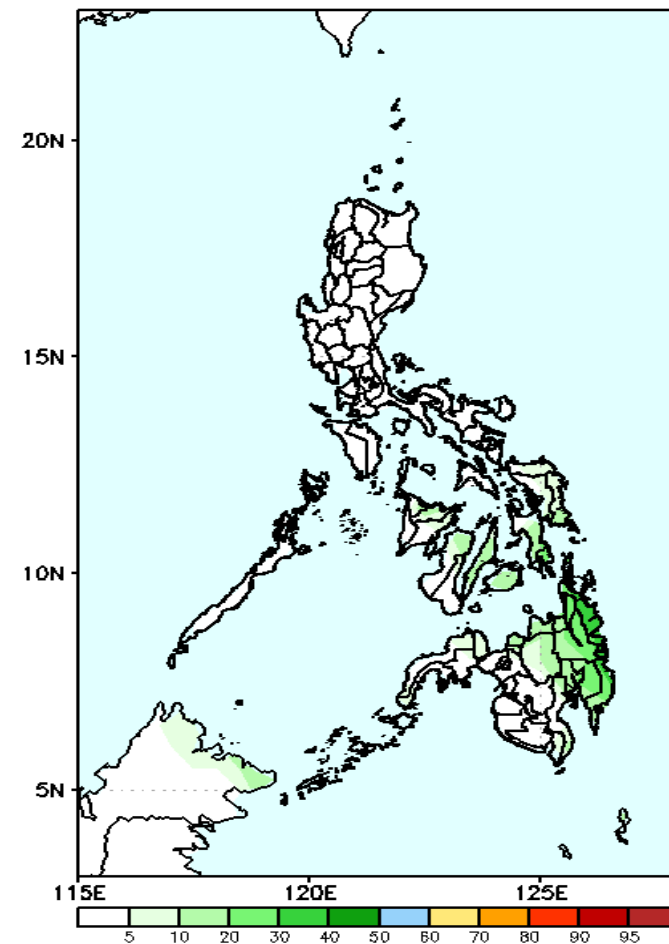
Low probability of rainfall to exceed 100mm in most parts of the country during the forecast period.

GEFS Week-2 Exceedance Prob. > 150mm
Valid: 20220218 - 20220224



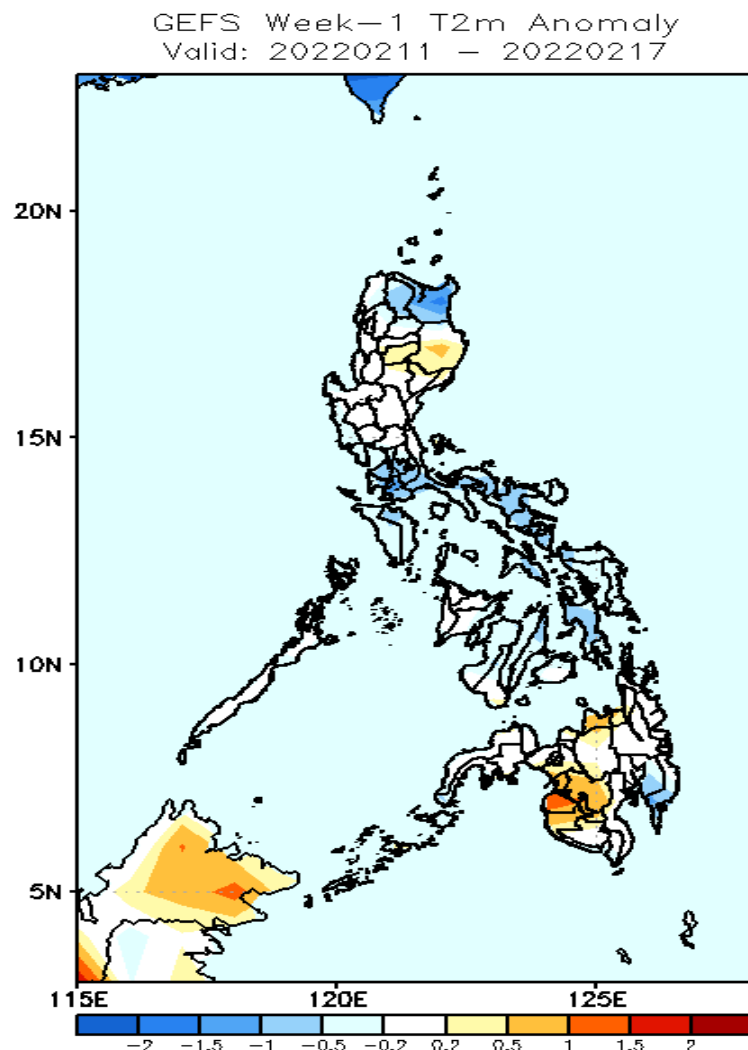
Low probability of rainfall to exceed 150mm in most parts of the country during the forecast period.

GEFS Week-2 Exceedance Prob. > 200mm
Valid: 20220218 - 20220224



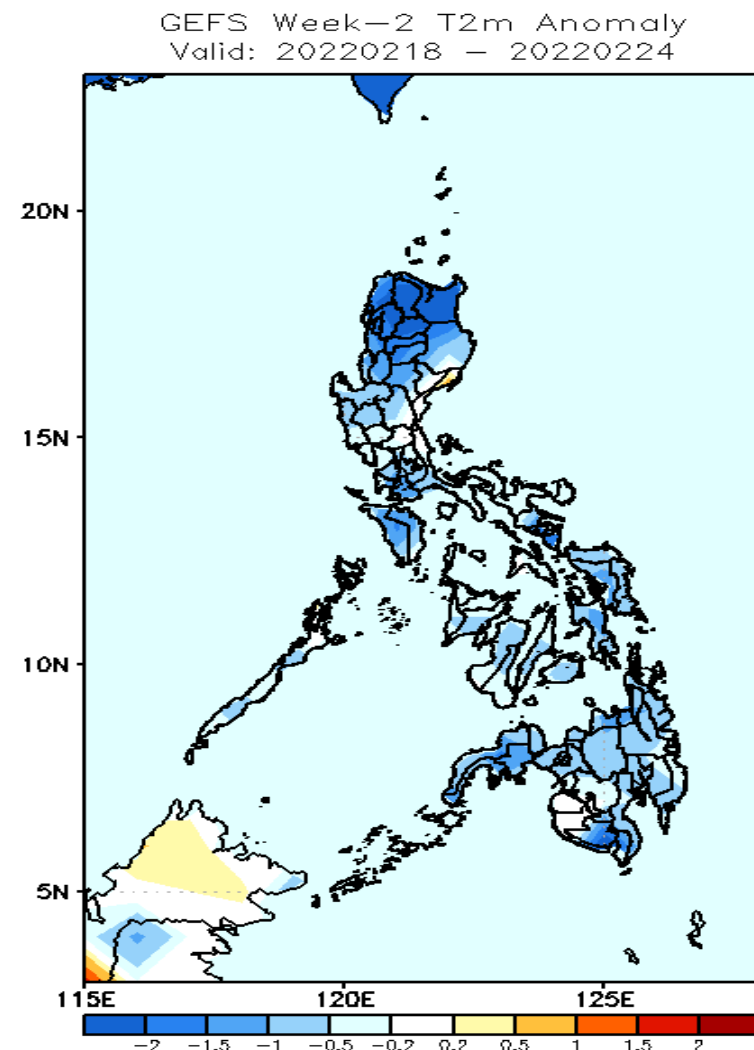
Low probability of rainfall to exceed 200mm in most parts of the country during the forecast period.

GEFS Week-1 & 2 Forecasts: T2m Anomaly



2m Temperature Week 1: Feb 11-17, 2022

Slightly cooler to cooler than average surface air temperature will likely experience in Apayao, Cagayan, most parts of Southern Luzon, Bicol Region and Central Visayas while average to slightly warmer for the rest of the country during the forecast period.



2m Temperature Week 2: Feb 18-24, 2022

Cooler than average surface air temperature will likely experience in most parts of the country during the forecast period.