



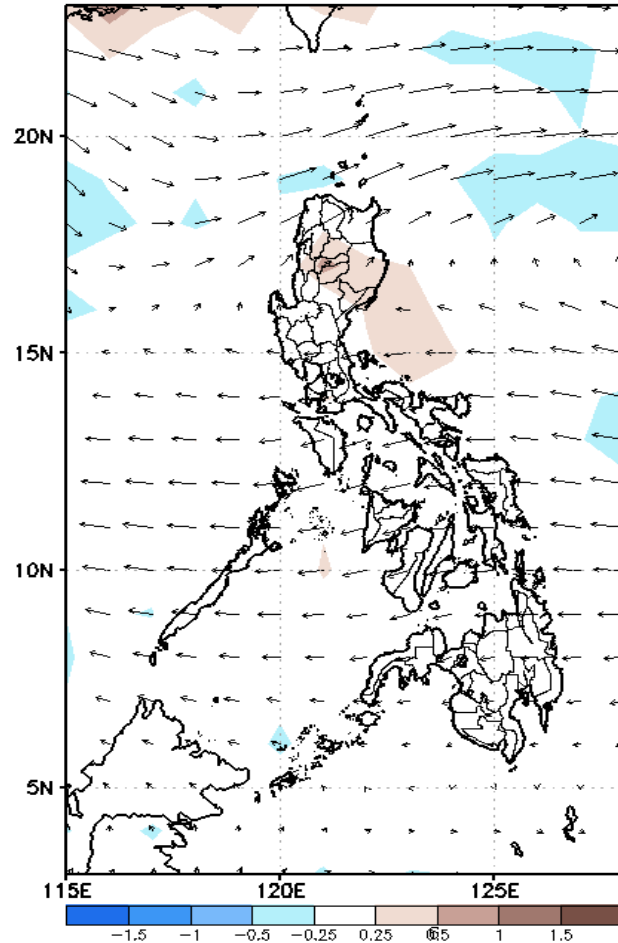
# Week 1 & Week 2 Forecast for the Philippines using GEFS Model



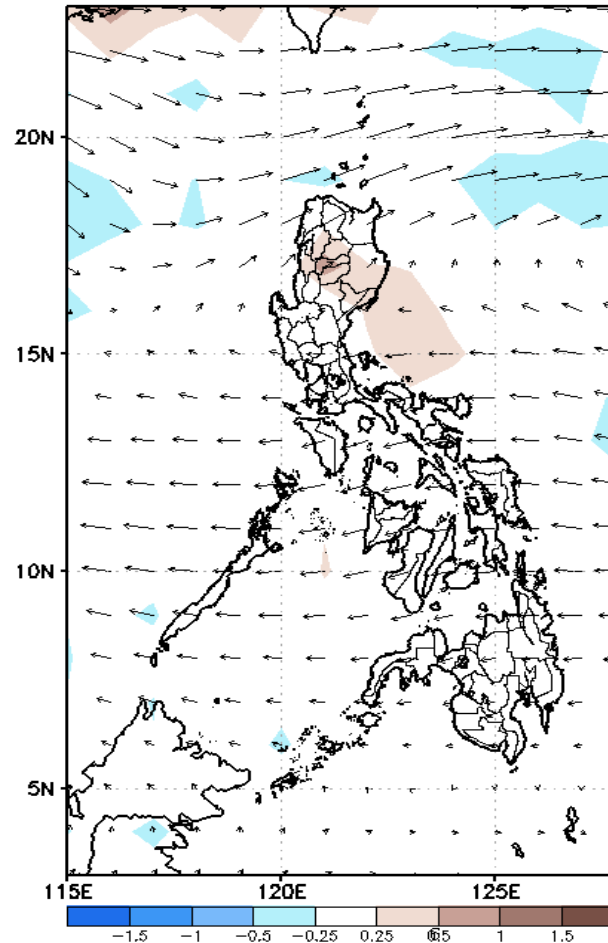
# GEFS Week-1 Forecasts: Divergence & Wind Anomaly

**Week 1: Mar 11-17, 2022**

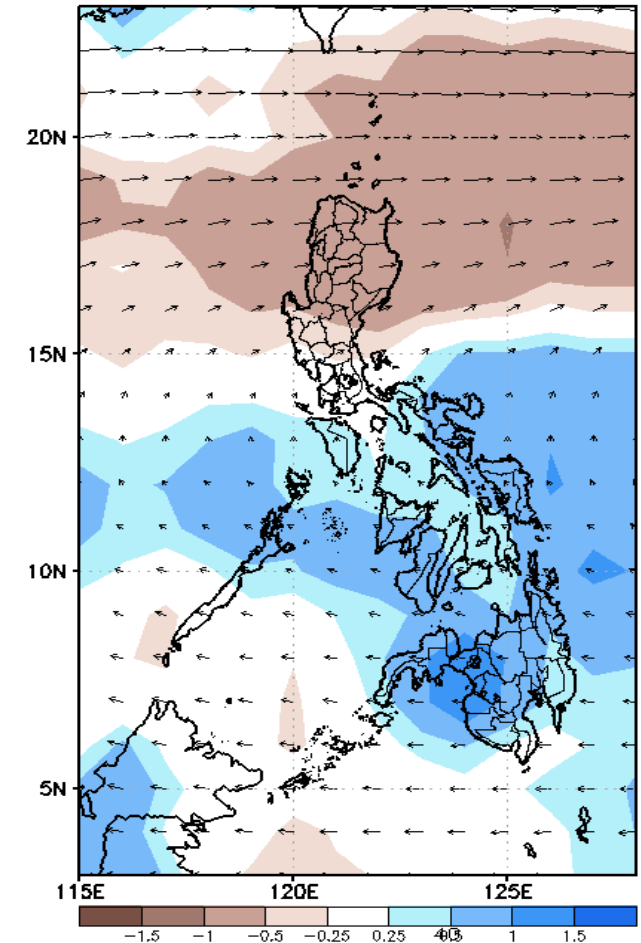
GEFS Week-1 850-hPa Divergence and Wind Anom  
Valid: 20220311 - 20220317



GEFS Week-1 700-hPa Divergence and Wind Anom  
Valid: 20220311 - 20220317



GEFS Week-1 200-hPa Divergence and Wind Anom  
Valid: 20220311 - 20220317

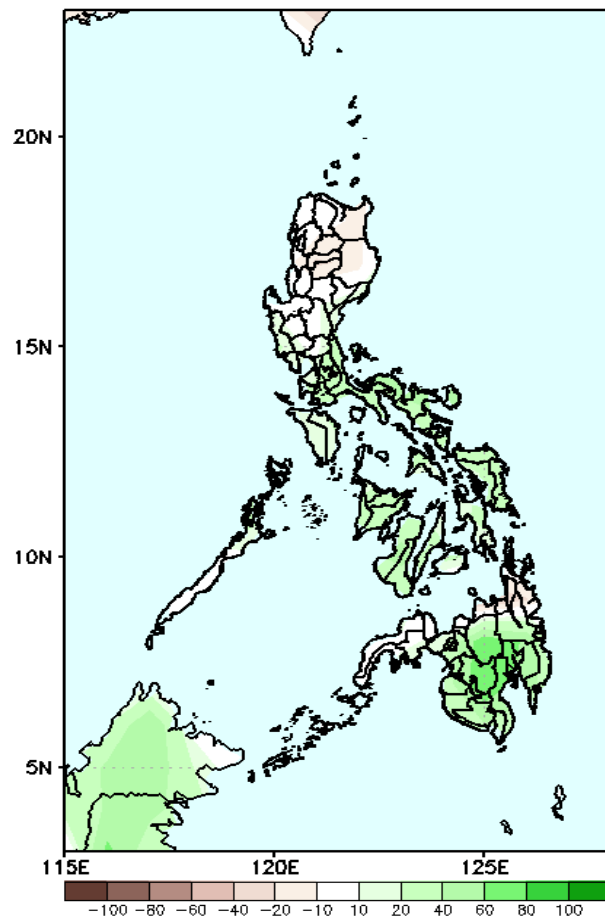


Upper and low level Divergence suggest a likelihood of light to moderate precipitation in Bicol Region, MIMAROPA and most parts of Visayas and Mindanao. Northeast Monsoon affecting some parts of Northern Luzon while Easterlies affecting most parts of the country during the forecast period.

# Precipitation Anomaly and Exceedance Probability > 25/50 mm

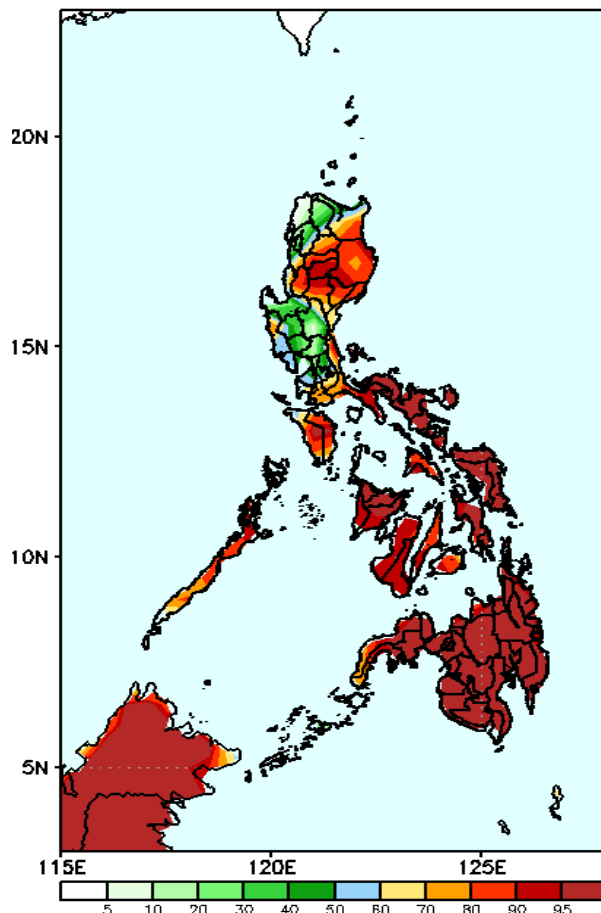
**Week 1: Mar 11-17, 2022**

GEFS Week-1 Precip Anomaly  
Valid: 20220311 - 20220317



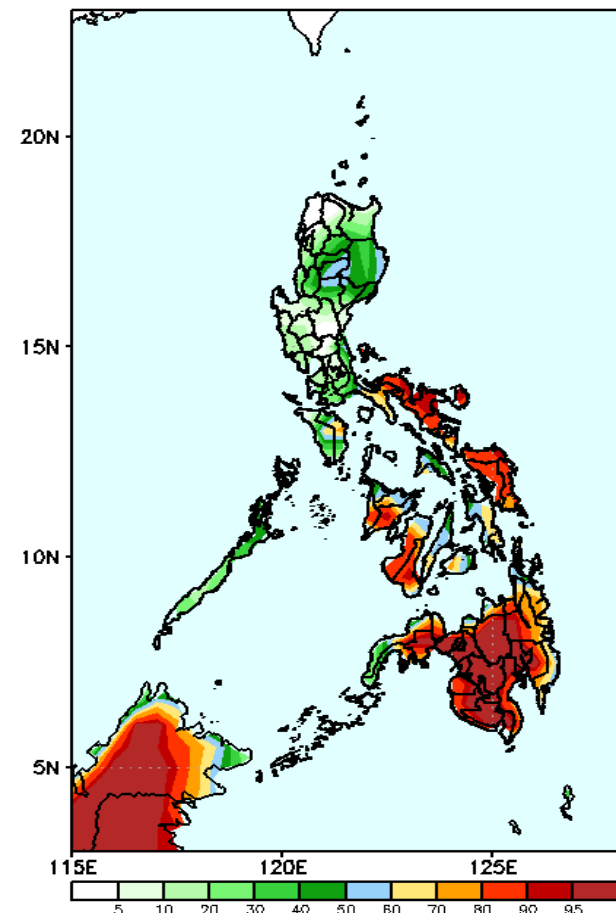
Increase of rainfall of 40-80mm in Southern Luzon and Visayas and up to 100mm in Mindanao during the forecast period.

GEFS Week-1 Exceedance Prob. > 25mm  
Valid: 20220311 - 20220317



High probability of rainfall to exceed 25mm in most parts of the country except in Apayao, Ilocos Region & Central Luzon during the forecast period.

GEFS Week-1 Exceedance Prob. > 50mm  
Valid: 20220311 - 20220317

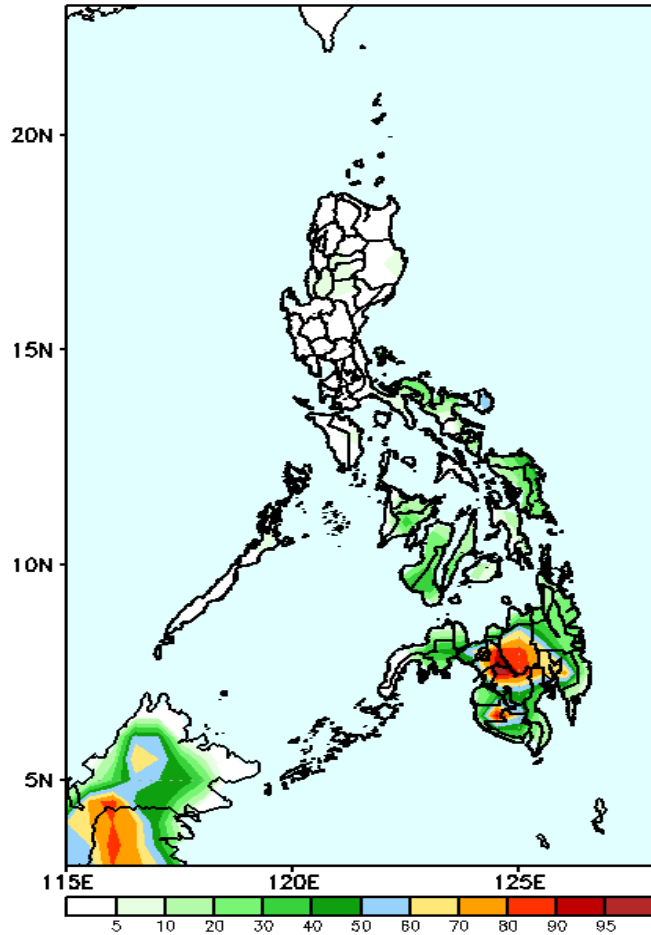


High probability of rainfall to exceed 50mm in parts of Quezon, most parts of Bicol Region, Eastern & Western Visayas and Mindanao while less likely for the rest of the country during the forecast period.

# Exceedance Probability > 100/150/200 mm

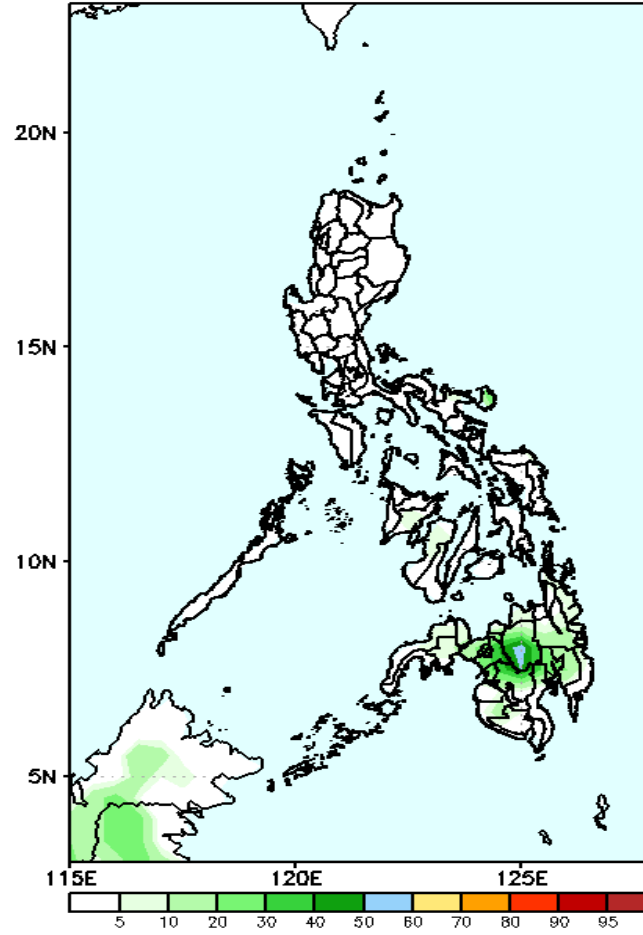
## Week 1: Mar 11-17, 2022

GEFS Week-1 Exceedance Prob. > 100mm  
Valid: 20220311 – 20220317



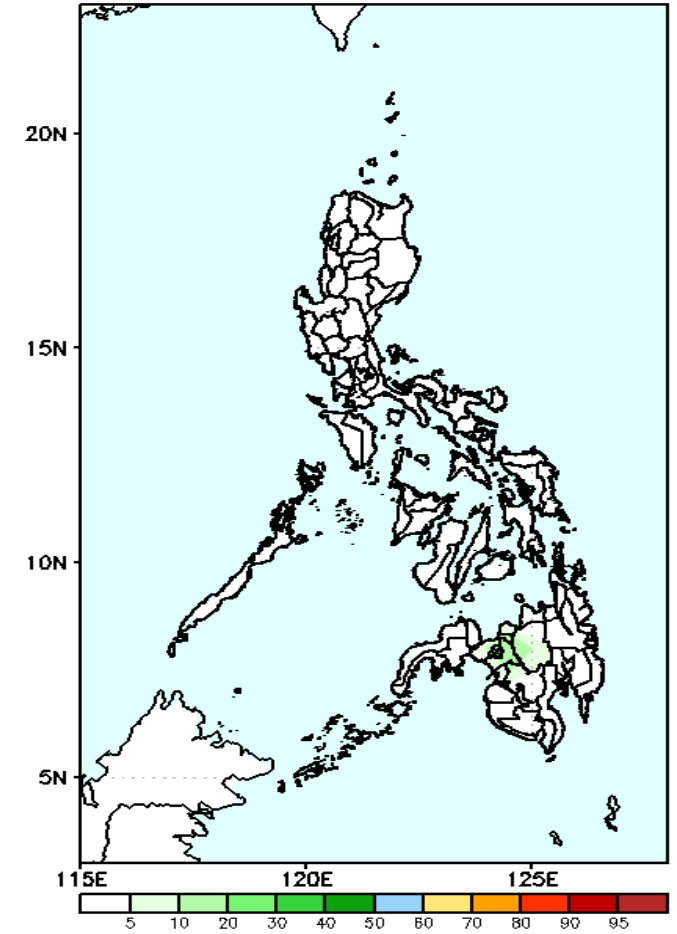
Low probability of rainfall to exceed 100mm in most parts of the country except in Lanao del Sur, Bukidnon, & North Cotabato where there is 70–95% chance during the forecast period.

GEFS Week-1 Exceedance Prob. > 150mm  
Valid: 20220311 – 20220317



Low probability of rainfall to exceed 150mm in most parts of the country during the forecast period.

GEFS Week-1 Exceedance Prob. > 200mm  
Valid: 20220311 – 20220317



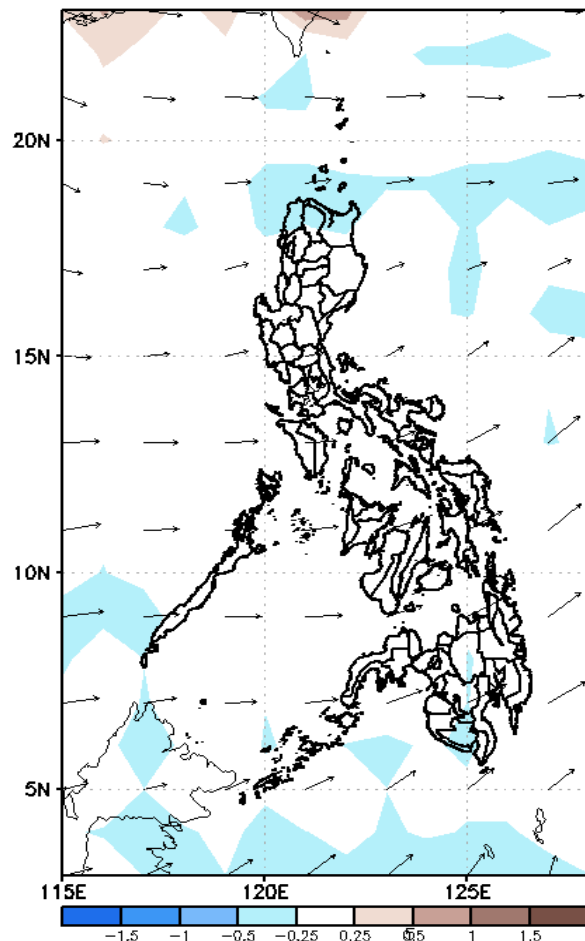
Low probability of rainfall to exceed 200mm in most parts of the country during the forecast period.



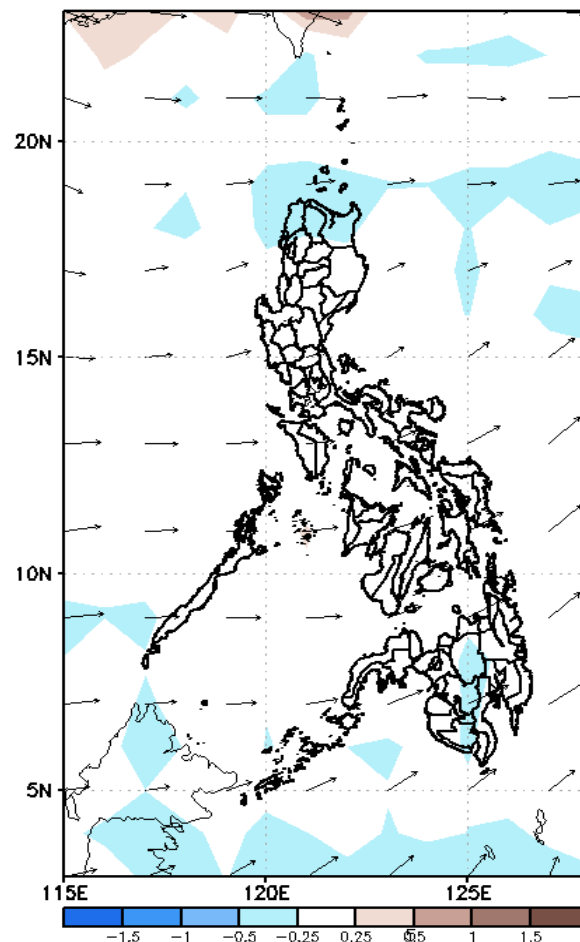
# GEFS Week-2 Forecasts: Divergence & Wind Anomaly

**Week 2: Mar 18-24, 2022**

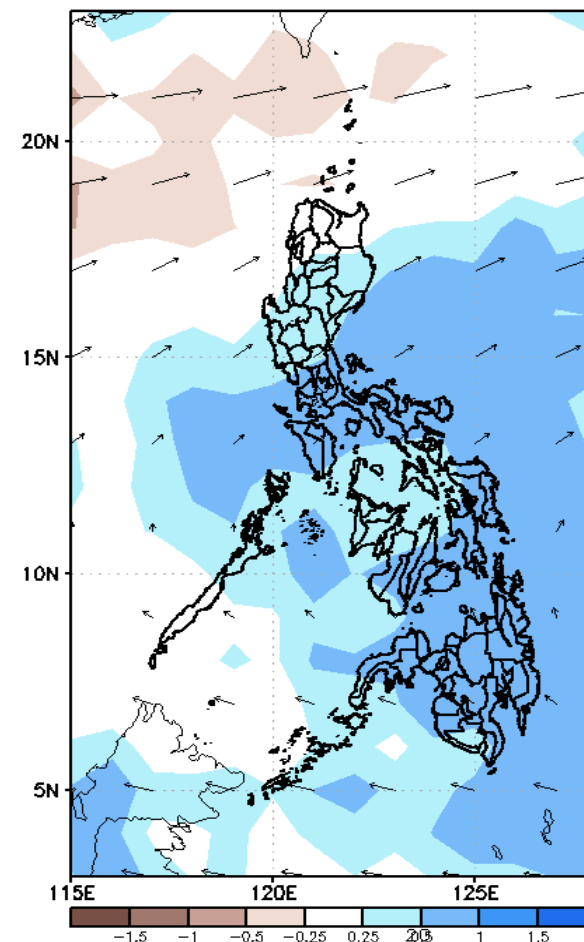
GEFS Week-2 850-hPa Divergence and Wind Anom  
Valid: 20220318 - 20220324



GEFS Week-2 700-hPa Divergence and Wind Anom  
Valid: 20220318 - 20220324



GEFS week-2 200-hPa Divergence and Wind Anom  
Valid: 20220318 - 20220324

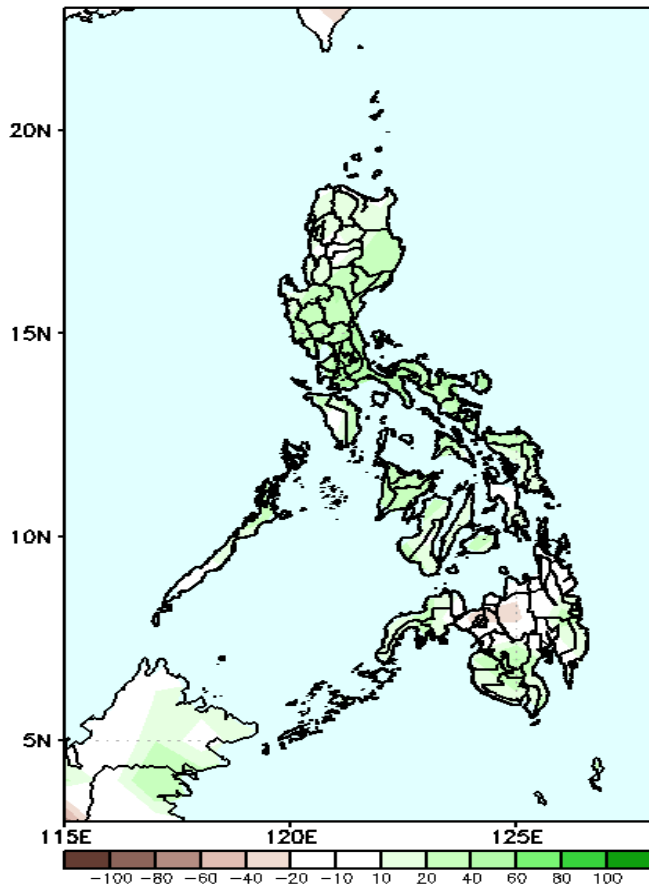


Upper and low level Divergence suggest a likelihood of light to moderate precipitation in most parts of the country. Easterlies affecting most parts of the country during the forecast period.

# Precipitation Anomaly and Exceedance Probability > 25/50 mm

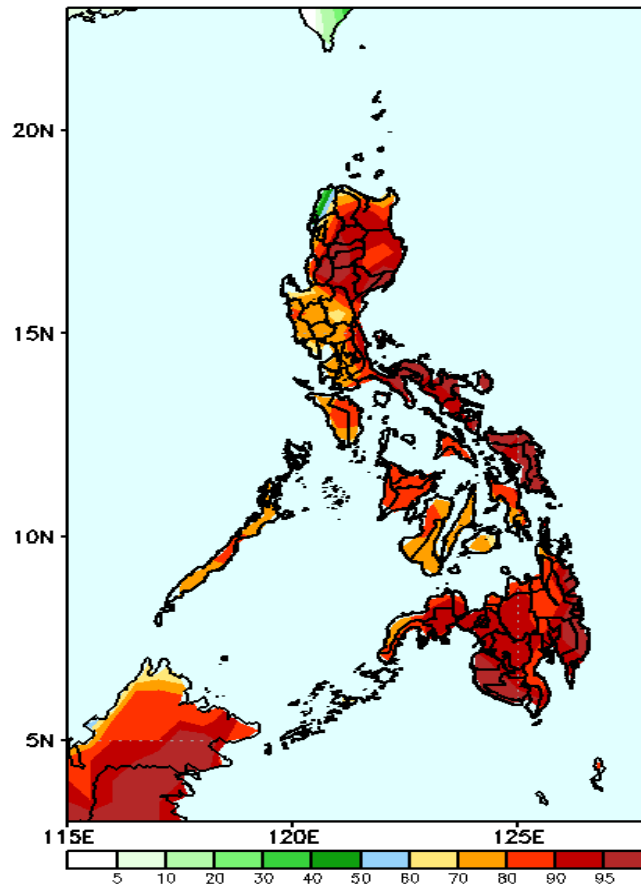
Week 2: Mar 18-24, 2022

GEFS Week-2 Precip Anomaly  
Valid: 20220318 - 20220324



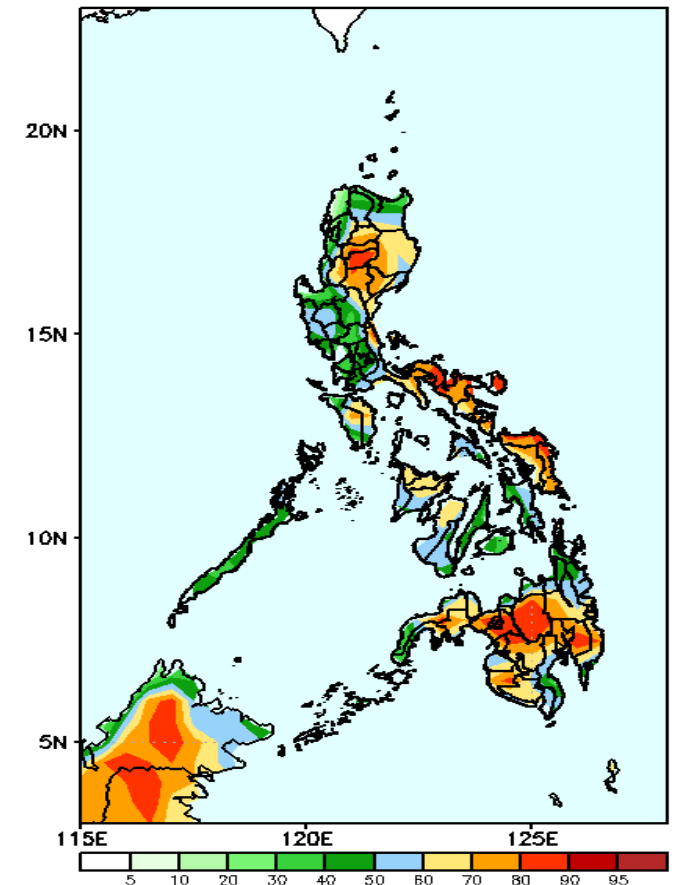
20-70mm Increase of rainfall is expected in CALABARZON, Bicol Region and most parts of Mindanao while 20-30mm rainfall deficit in Bukidnon during the forecast period.

GEFS Week-2 Exceedance Prob. > 25mm  
Valid: 20220318 - 20220324



High probability of rainfall to exceed 25mm in most parts of the country during the forecast period.

GEFS Week-2 Exceedance Prob. > 50mm  
Valid: 20220318 - 20220324



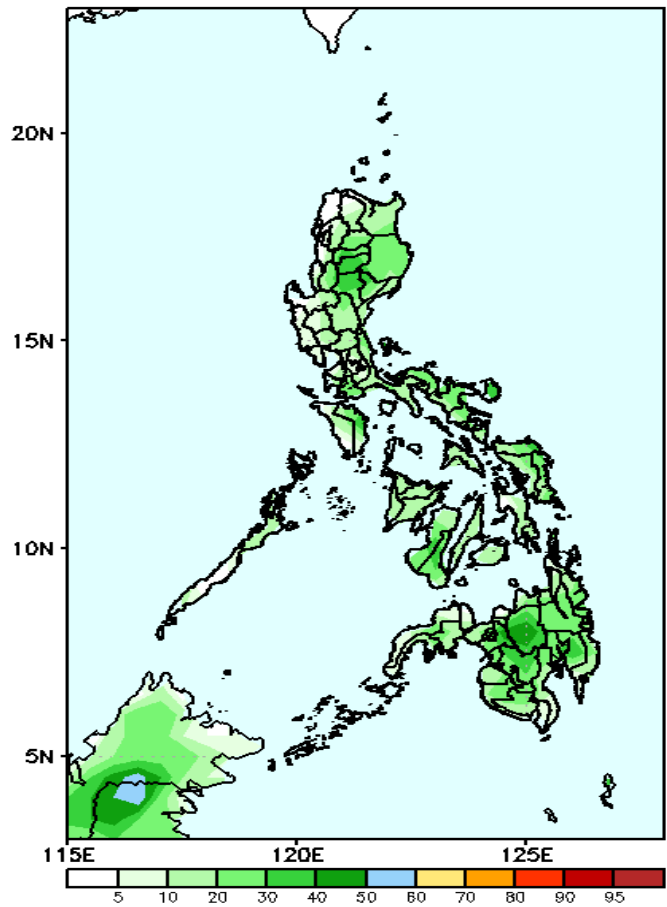
60-95% probability of rainfall to exceed 50mm in Cagayan Valley, Cordillera Region, Aurora, Quezon, Mindoro, most parts of Eastern & Western Visayas and Mindanao while less likely for the rest of the country during the forecast period



# Exceedance Probability > 100/150/200 mm

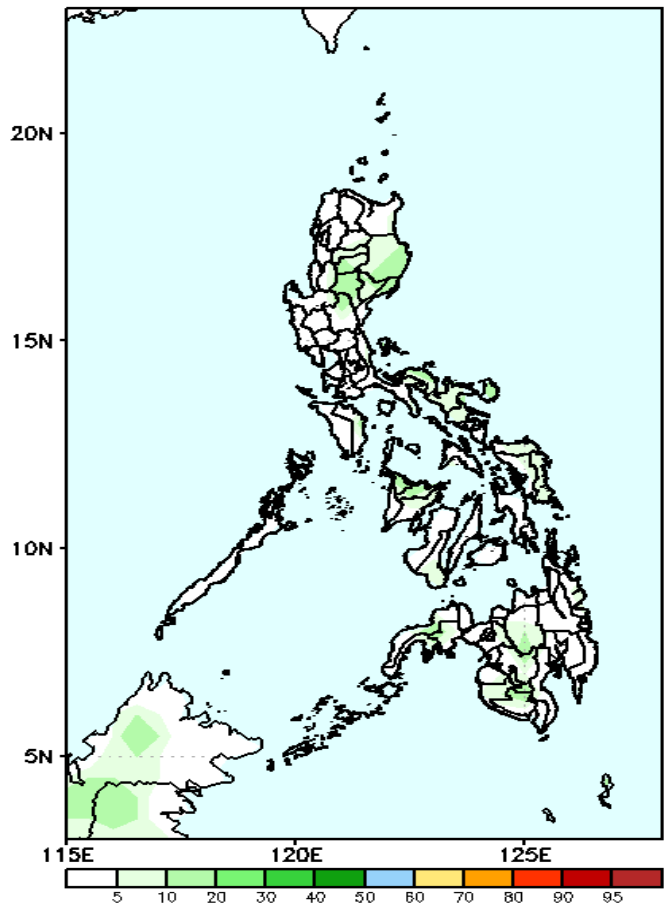
## Week 2: Mar 18-24, 2022

GEFS Week-2 Exceedance Prob. > 100mm  
Valid: 20220318 – 20220324



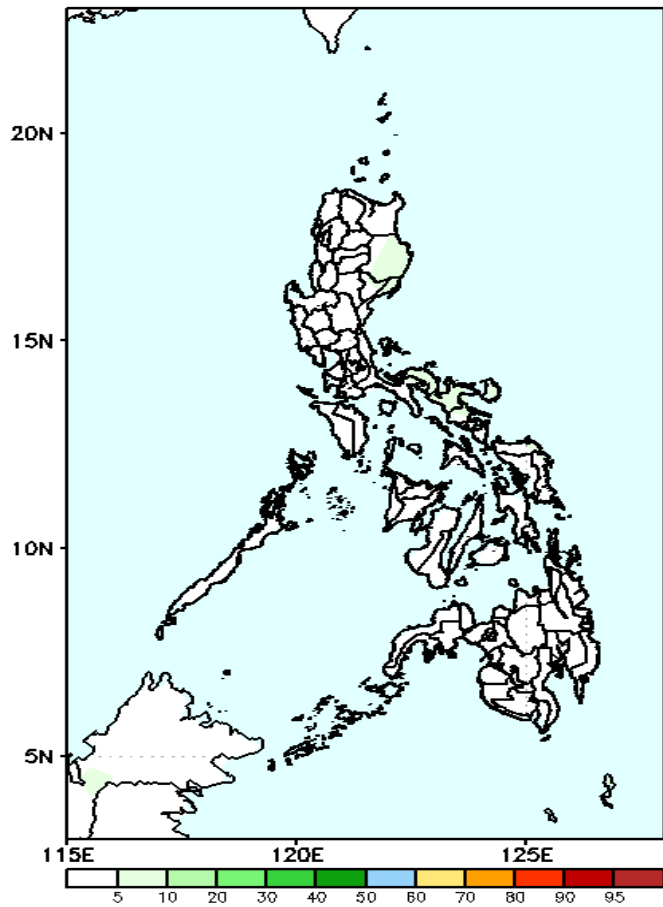
Low probability of rainfall to exceed 100mm in most parts of the country during the forecast period.

GEFS Week-2 Exceedance Prob. > 150mm  
Valid: 20220318 – 20220324



Low probability of rainfall to exceed 150mm in most parts of the country during the forecast period.

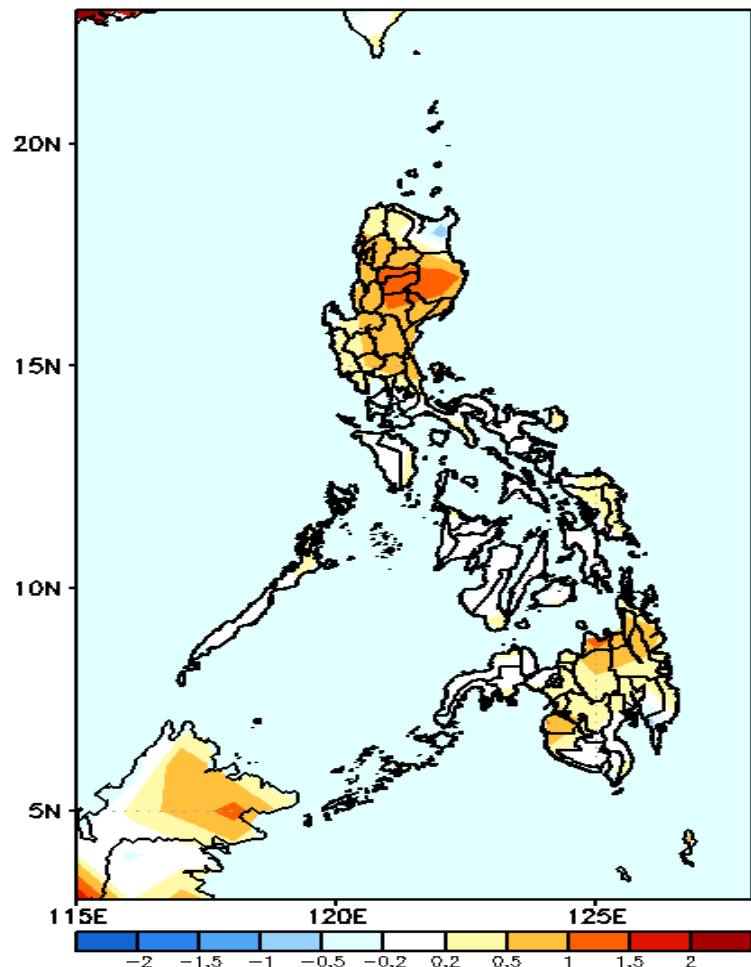
GEFS Week-2 Exceedance Prob. > 200mm  
Valid: 20220318 – 20220324



Low probability of rainfall to exceed 200mm in most parts of the country during the forecast period.

# GEFS Week-1 & 2 Forecasts: T2m Anomaly

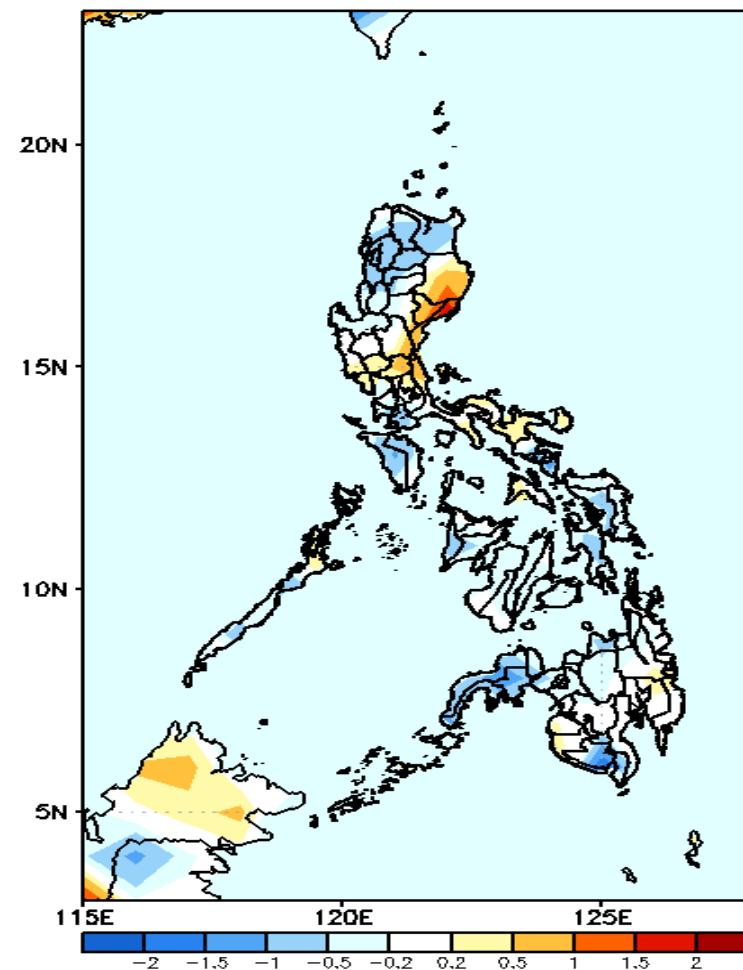
GEFS Week-1 T2m Anomaly  
Valid: 20220311 – 20220317



## 2m Temperature Week 1: Mar 11-17, 2022

Slightly warmer to warmer than average surface air temperature will likely experience in most parts of Luzon, Maguindanao and Northern Mindanao while Average temperature for the rest of the country during the forecast period.

GEFS Week-2 T2m Anomaly  
Valid: 20220318 – 20220324



## 2m Temperature Week 2: Mar 18-24, 2022

Slightly cooler to cooler than average surface air temperature will likely experience in northern Luzon, Mindoro, Eastern Visayas, South Cotabato and Zamboanga Peninsula while slightly warmer to warmer temperature is expected in Isabela, Quirino, Aurora and CALABARZON during the forecast period.