



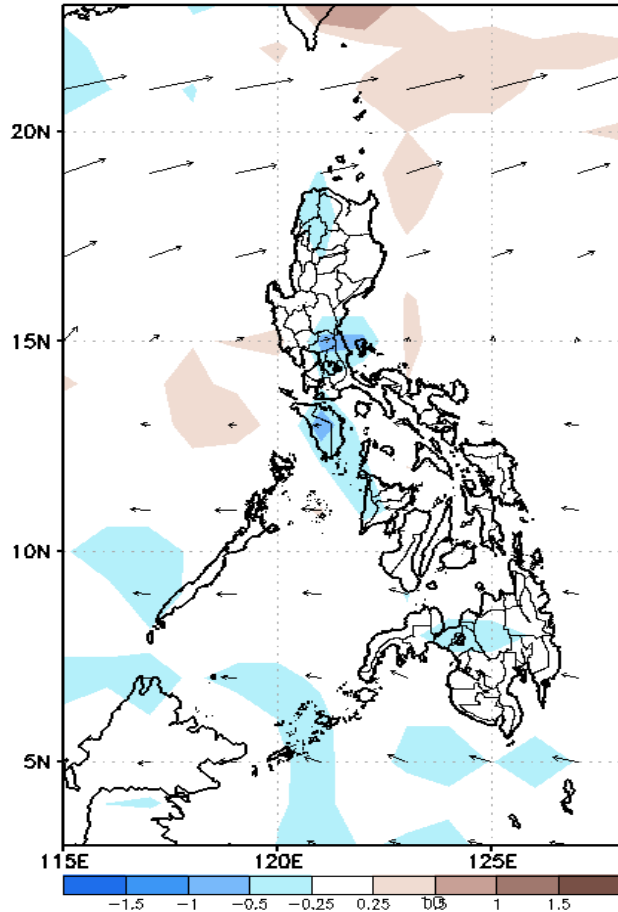
Week 1 & Week 2 Forecast for the Philippines using GEFS Model



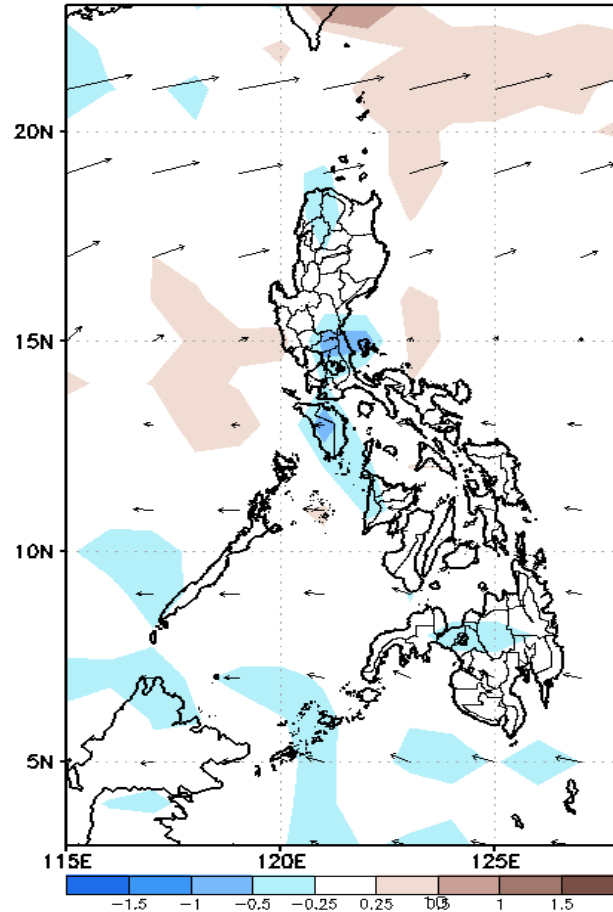
GEFS Week-1 Forecasts: Divergence & Wind Anomaly

Week 1: Nov 11-17, 2021

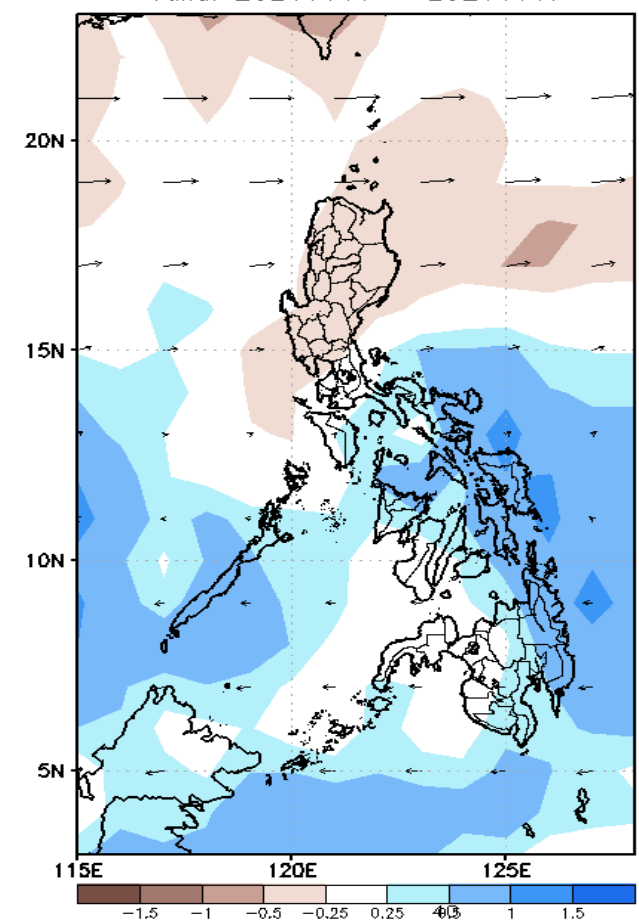
GEFS Week-1 850-hPa Divergence and Wind Anom
Valid: 20211111 - 20211117



GEFS Week-1 700-hPa Divergence and Wind Anom
Valid: 20211111 - 20211117



GEFS Week-1 200-hPa Divergence and Wind Anom
Valid: 20211111 - 20211117

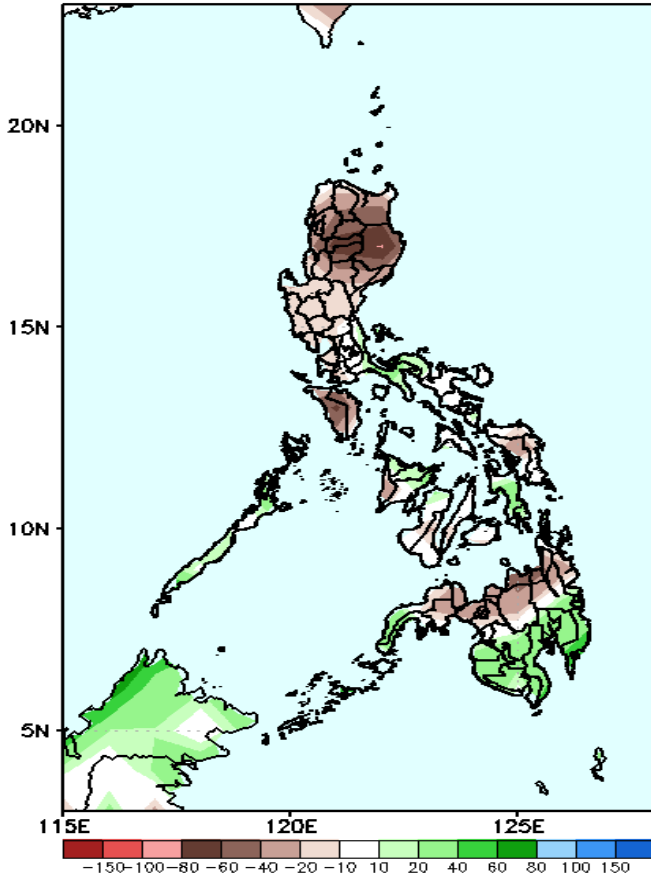


Upper and low level Divergence suggest likelihood of light precipitation in Bicol region, Eastern Visayas and most parts of Mindanao. Northeast Monsoon affecting Northern-Extreme Northern Luzon while Easterlies affecting the rest of the country during the forecast period.

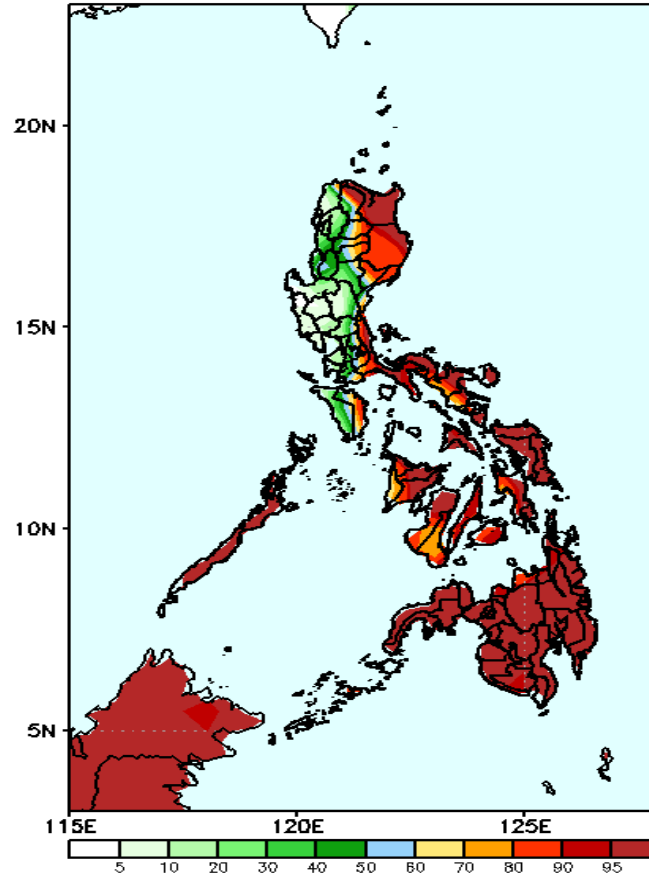
Precipitation Anomaly and Exceedance Probability > 25/50 mm

Week 1: Nov 11-17, 2021

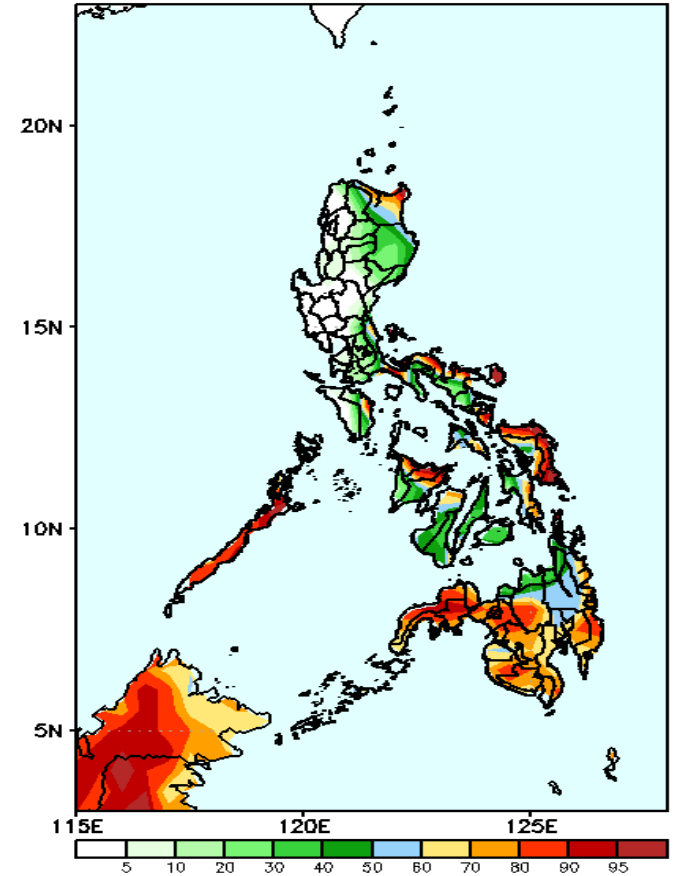
GEFS Week-1 Precip Anomaly
Valid: 20211111 - 20211117



GEFS Week-1 Exceedance Prob. > 25mm
Valid: 20211111 - 20211117



GEFS Week-1 Exceedance Prob. > 50mm
Valid: 20211111 - 20211117



Rainfall deficit of 20-80mm in most parts of the country is expected except in the southern part of Mindanao where is increase of rainfall of 20-50mm during the forecast period.

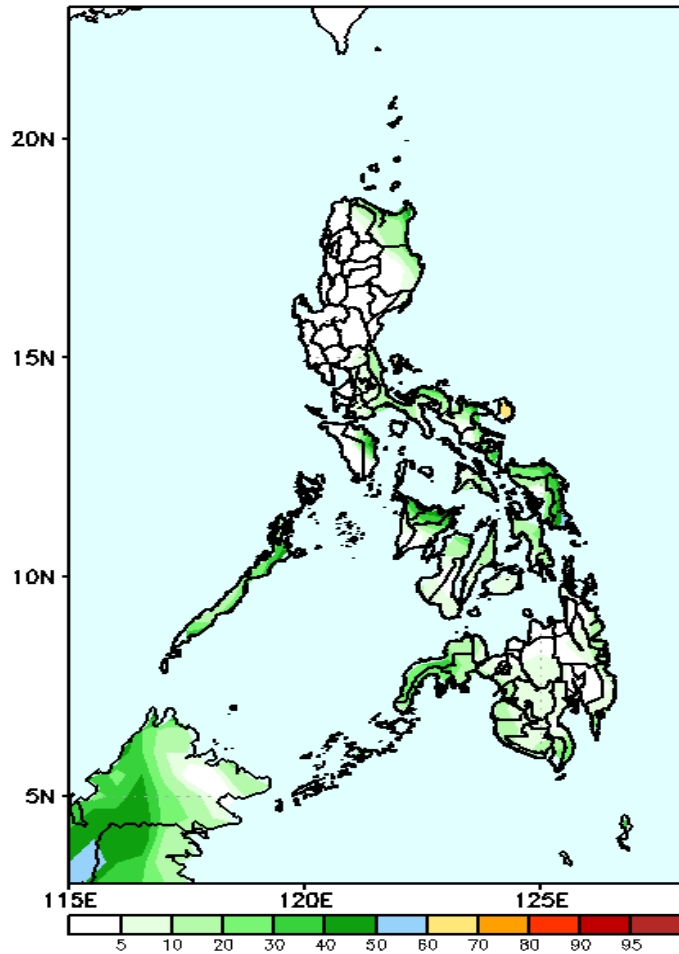
High probability of rainfall to exceed 25mm in eastern parts of Luzon and most parts of Visayas and Mindanao while less likely for the rest Luzon during the forecast period.

High probability of rainfall to exceed 50mm in northern Luzon, eastern parts of Bicol Region, Northern & Eastern Samar, Aklan, Capiz and most parts of Mindanao(except Misamis Oriental & Agusan del Norte) while less likely for the rest of the country during the forecast period.

Exceedance Probability > 100/150/200 mm

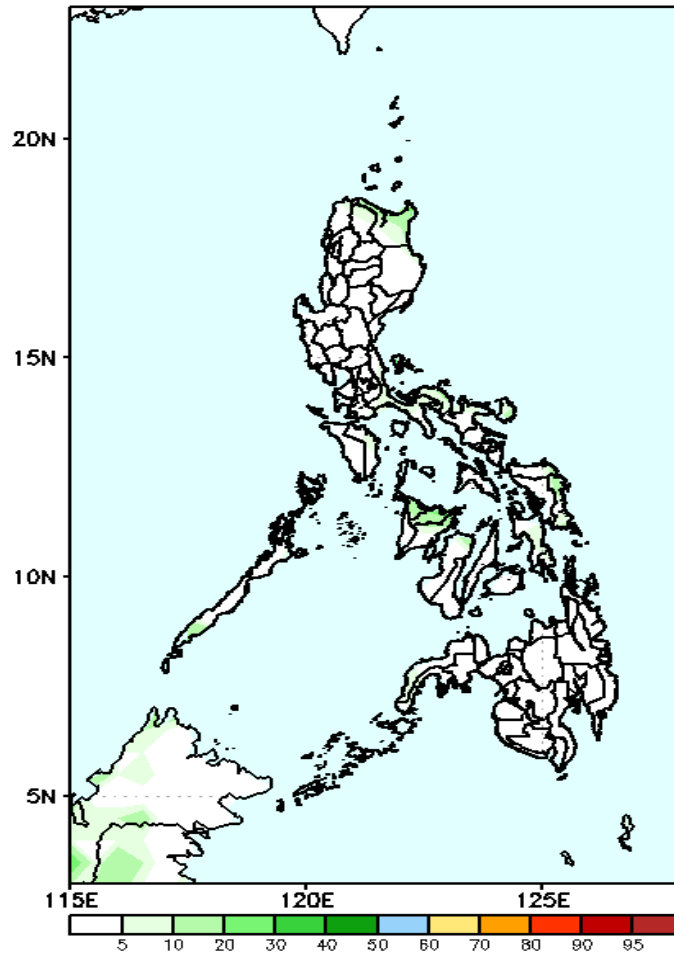
Week 1: Nov 11-17, 2021

GEFS Week-1 Exceedance Prob. > 100mm
Valid: 20211111 - 20211117



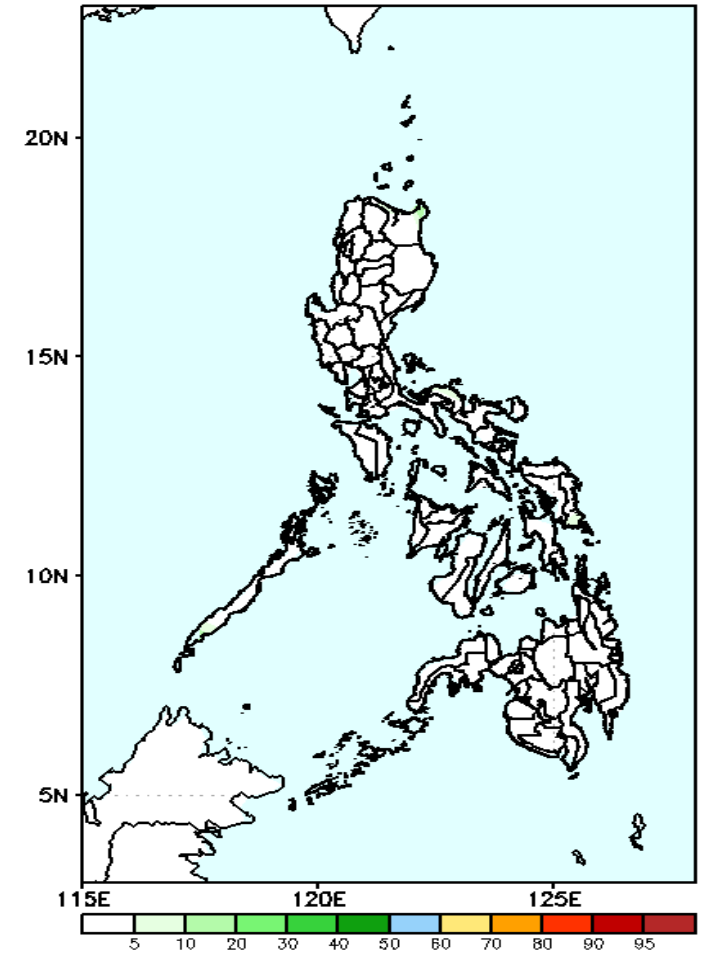
Less probability of rainfall to exceed 100mm in most parts of the country is expected during the forecast period.

GEFS Week-1 Exceedance Prob. > 150mm
Valid: 20211111 - 20211117



Less probability of rainfall to exceed 150mm in most parts of the country is expected during the forecast period.

GEFS Week-1 Exceedance Prob. > 200mm
Valid: 20211111 - 20211117

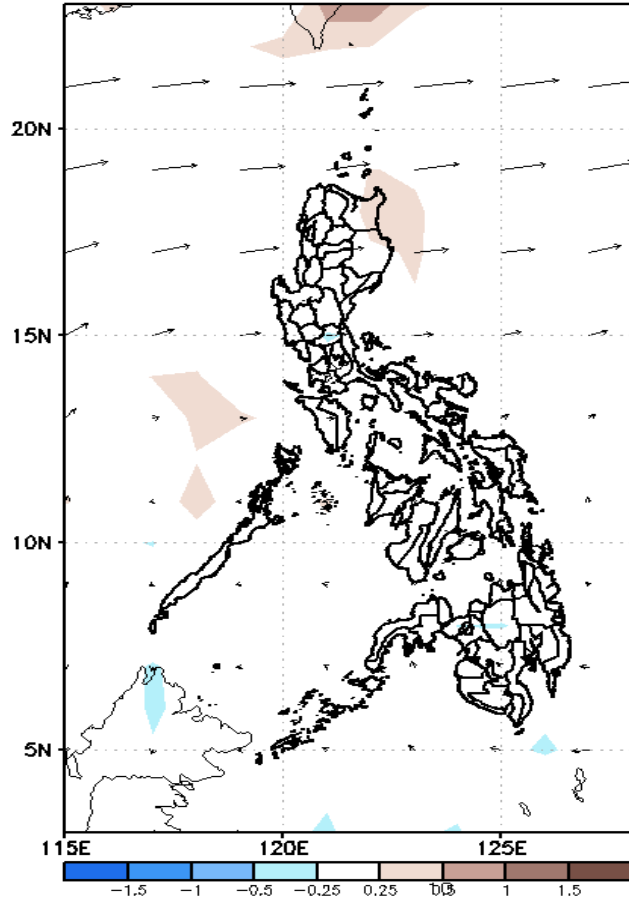


Less probability of rainfall to exceed 200mm in most parts of the country is expected during the forecast period.

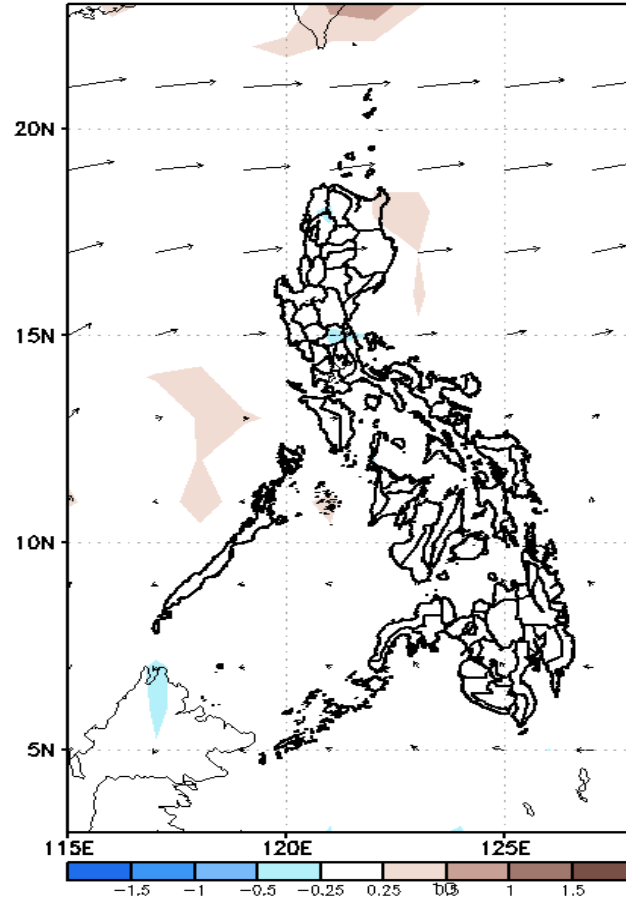
GEFS Week-2 Forecasts: Divergence & Wind Anomaly

Week 2: Nov 18-24, 2021

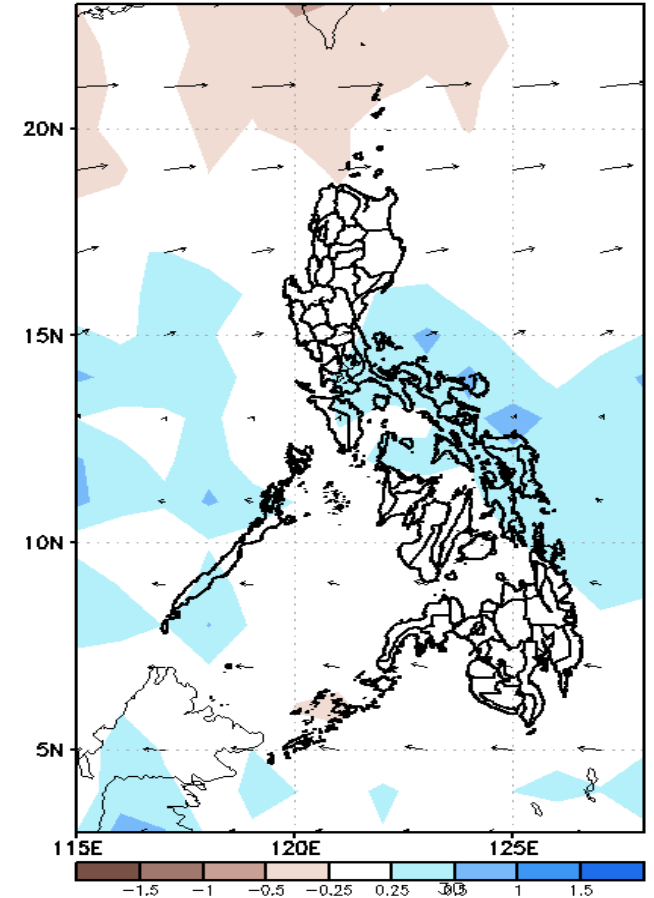
GEFS Week-2 850-hPa Divergence and Wind Anom
Valid: 20211118 - 20211124



GEFS Week-2 700-hPa Divergence and Wind Anom
Valid: 20211118 - 20211124



GEFS week-2 200-hPa Divergence and Wind Anom
Valid: 20211118 - 20211124

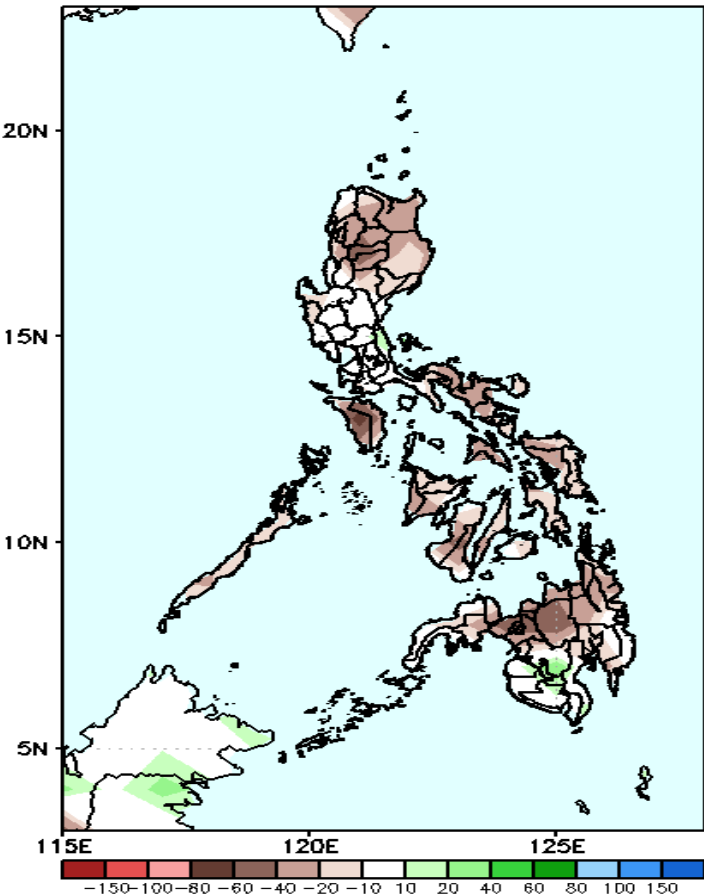


Upper and low level Divergence suggest likelihood of light precipitation in Quezon, Bicol region, Eastern Visayas and Surigao del Norte. Northeast Monsoon affecting the eastern sections of Luzon and Visayas during the forecast period.

Precipitation Anomaly and Exceedance Probability > 25/50 mm

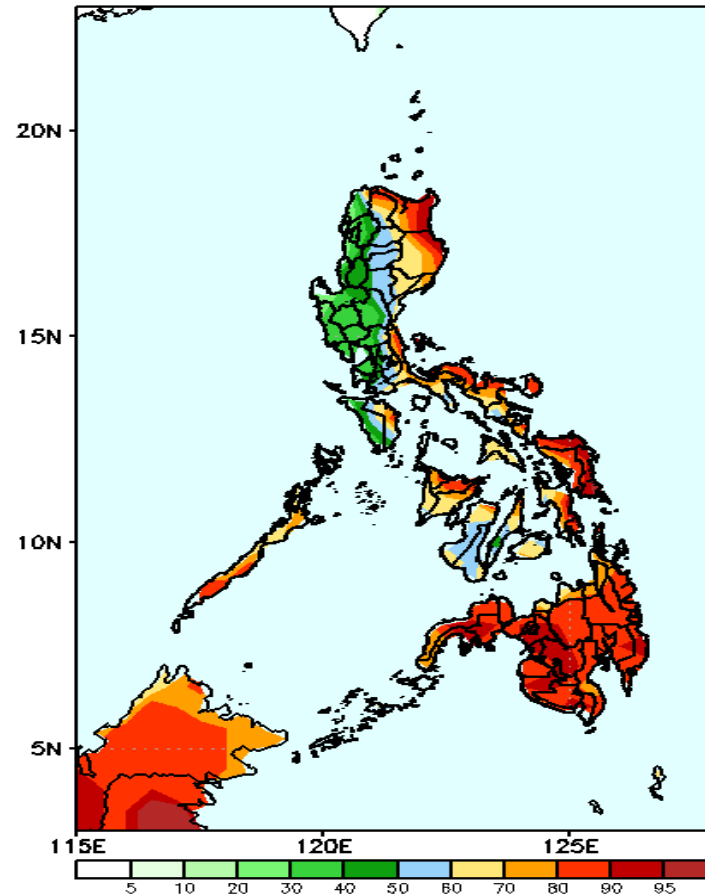
Week 2: Nov 18-24, 2021

GEFS Week-2 Precip Anomaly
Valid: 20211118 - 20211124



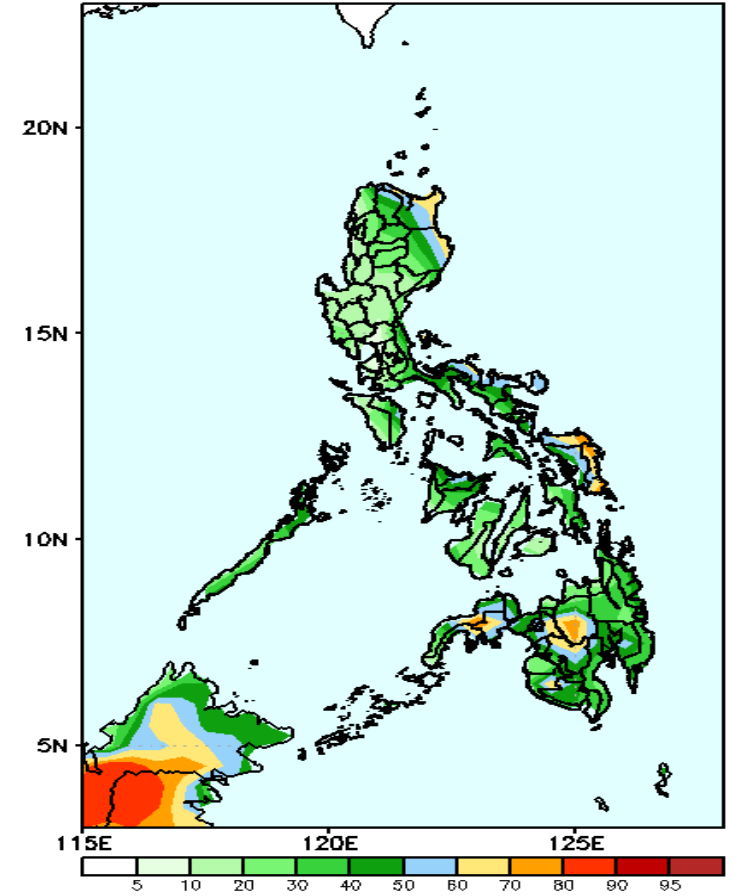
Rainfall deficit of 20-80mm in most parts of the country is expected during the forecast period.

GEFS Week-2 Exceedance Prob. > 25mm
Valid: 20211118 - 20211124



High probability of rainfall to exceed 25mm in eastern parts of Luzon and most parts of Visayas and Mindanao while less likely for the rest Luzon during the forecast period.

GEFS Week-2 Exceedance Prob. > 50mm
Valid: 20211118 - 20211124

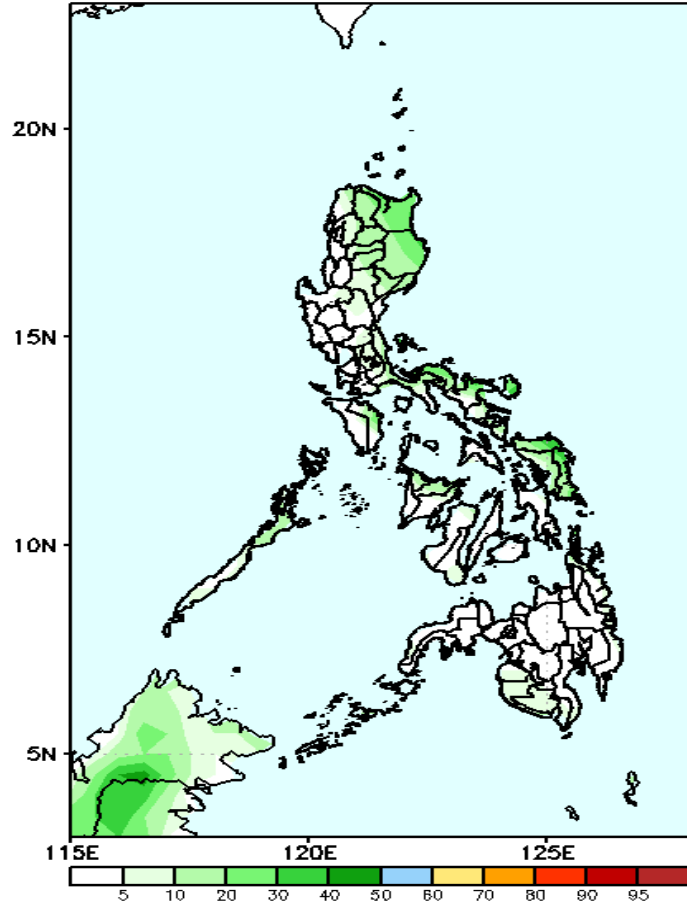


Less probability of rainfall to exceed 50mm in most parts of the country is expected except in Northern & Eastern Samar and Bukidnon where there is 60-80% chance during the forecast period.

Exceedance Probability > 100/150/200 mm

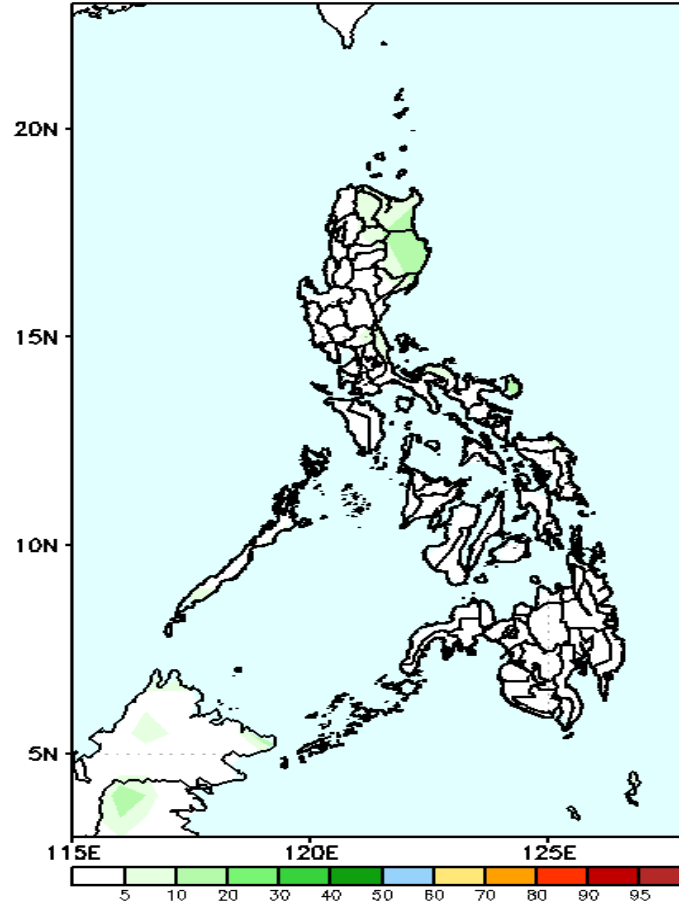
Week 2: Nov 18-24, 2021

GEFS Week-2 Exceedance Prob. > 100mm
Valid: 20211118 - 20211124



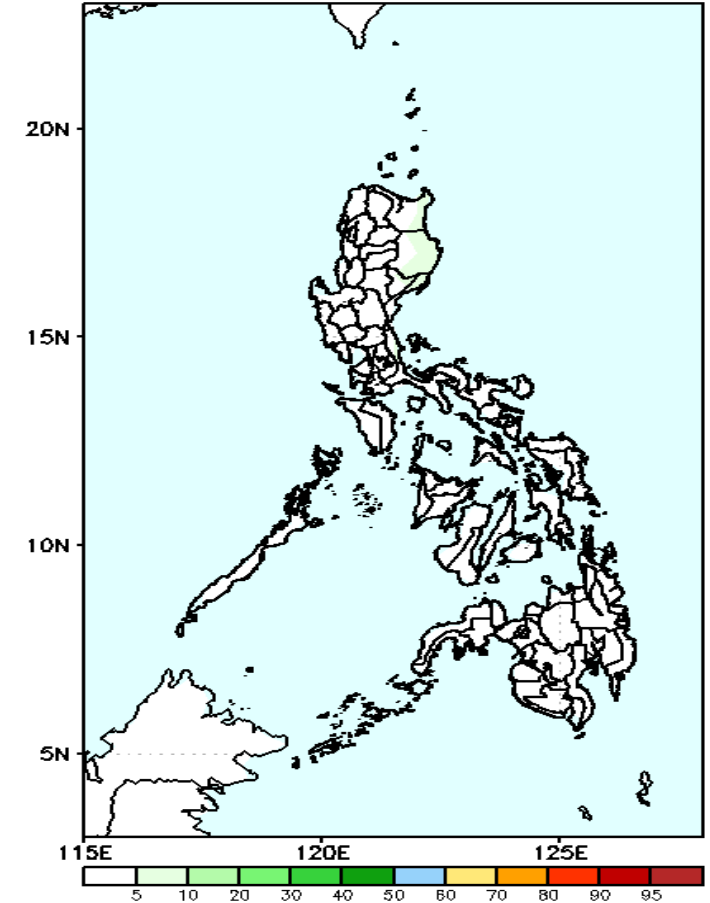
Less probability of rainfall to exceed 100mm in most parts of the country is expected during the forecast period.

GEFS Week-2 Exceedance Prob. > 150mm
Valid: 20211118 - 20211124



Less probability of rainfall to exceed 150mm in most parts of the country is expected during the forecast period.

GEFS Week-2 Exceedance Prob. > 200mm
Valid: 20211118 - 20211124

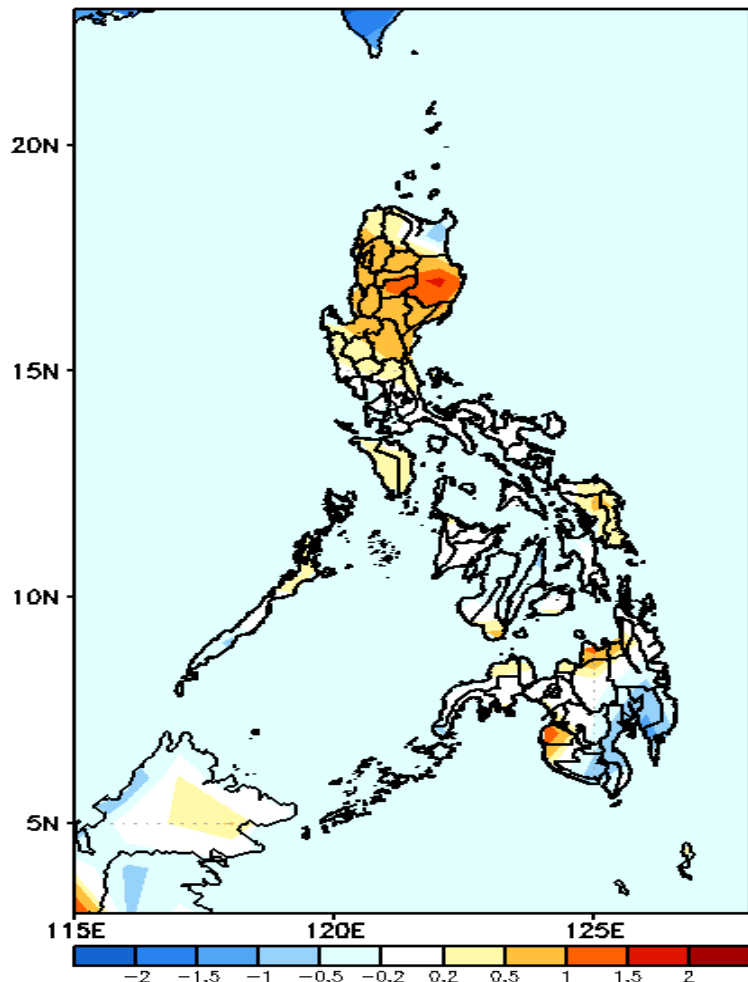


Less probability of rainfall to exceed 200mm in most parts of the country is expected during the forecast period.



GEFS Week-1 & 2 Forecasts: T2m Anomaly

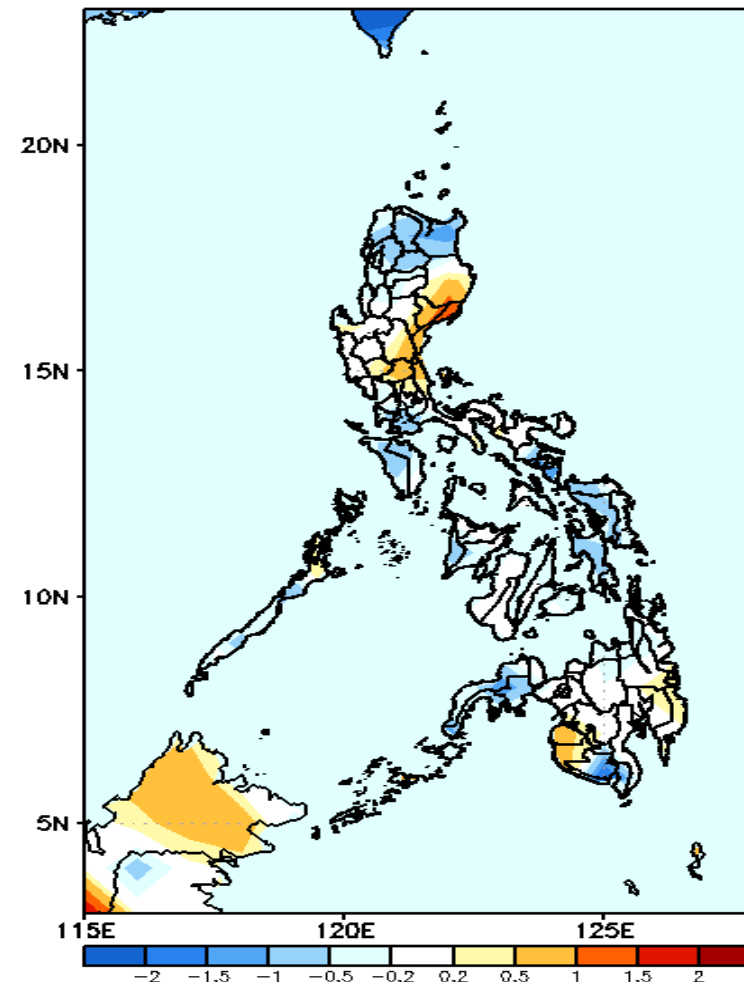
GEFS Week-1 T2m Anomaly
Valid: 20211111 - 20211117



2m Temperature Week 1: Nov 11-17, 2021

Slightly warmer to warmer than average surface air temperature will likely experience in most parts of Luzon (except in Cagayan), Maguindanao and Misamis Oriental while average to slightly cooler temperature for the rest of the country during the forecast period.

GEFS Week-2 T2m Anomaly
Valid: 20211118 - 20211124



2m Temperature Week 2: Nov 18-24, 2021

Slightly cooler to cooler than average surface air temperature will likely experience in most parts of the country except in Isabela, Quirino, Aurora, Nueva Ecija and Bulacan where slightly warmer temperature is expected during the forecast period.