



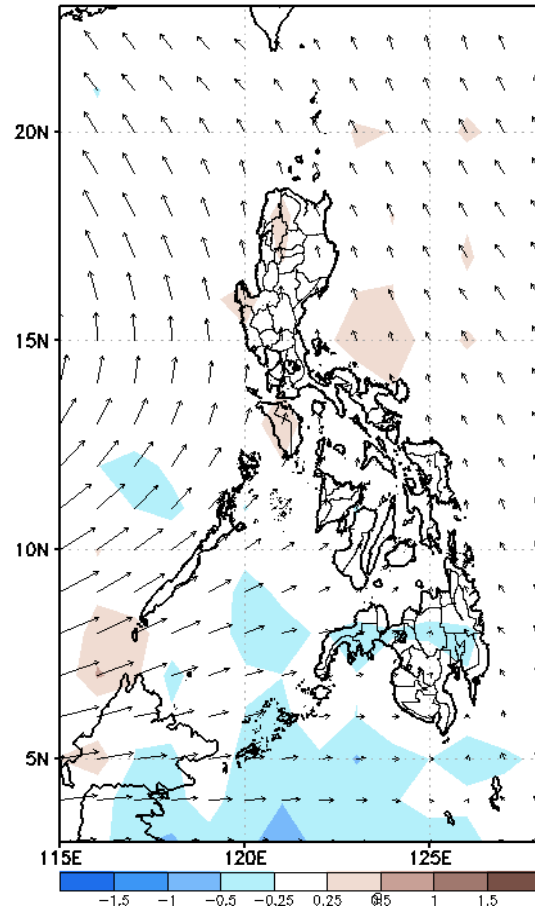
Week 1 & Week 2 Forecast for the Philippines using GEFS Model



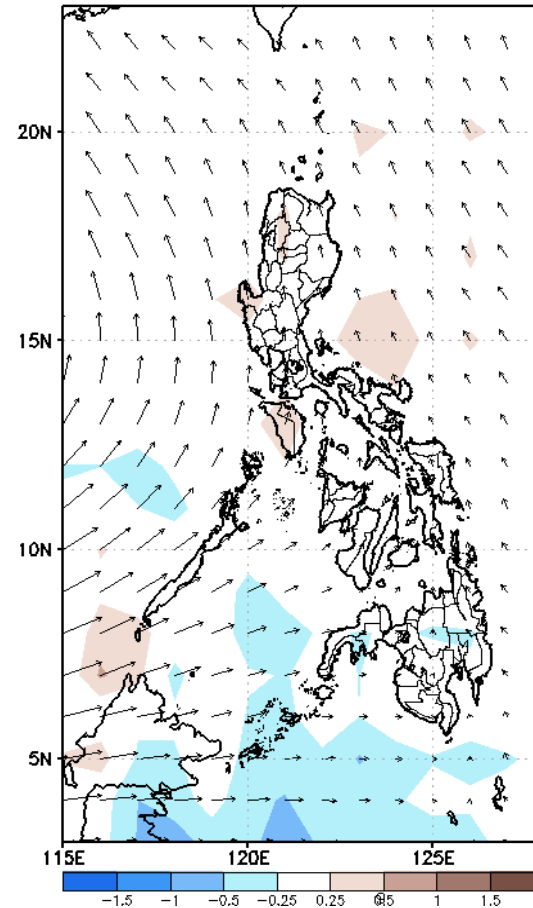
GEFS Week-1 Forecasts: Wind Anomaly Forecast

Week 1: Jul 11 - Jul 17, 2022

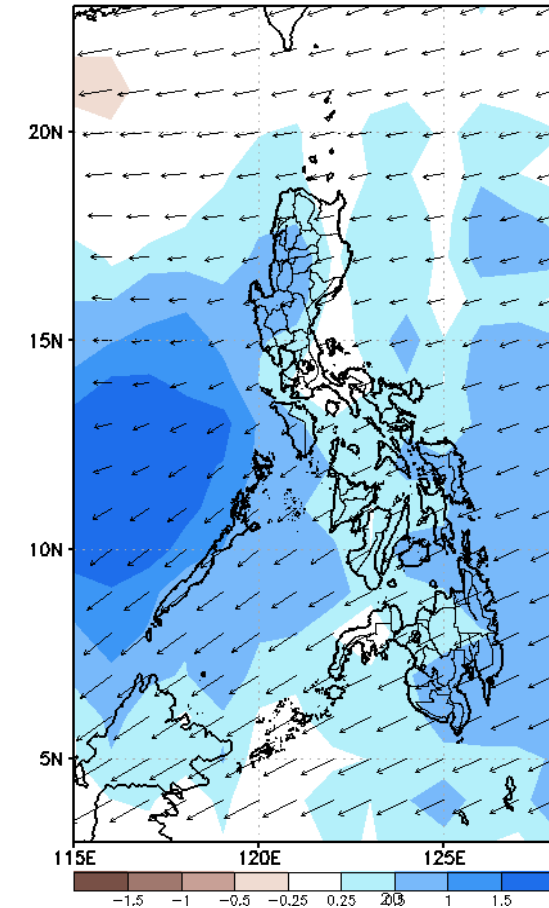
GEFS Week-1 850-hPa Divergence and Wind Anomaly
Valid: 20220711 - 20220717



GEFS Week-1 700-hPa Divergence and Wind Anomaly
Valid: 20220711 - 20220717



GEFS Week-1 200-hPa Divergence and Wind Anomaly
Valid: 20220711 - 20220717

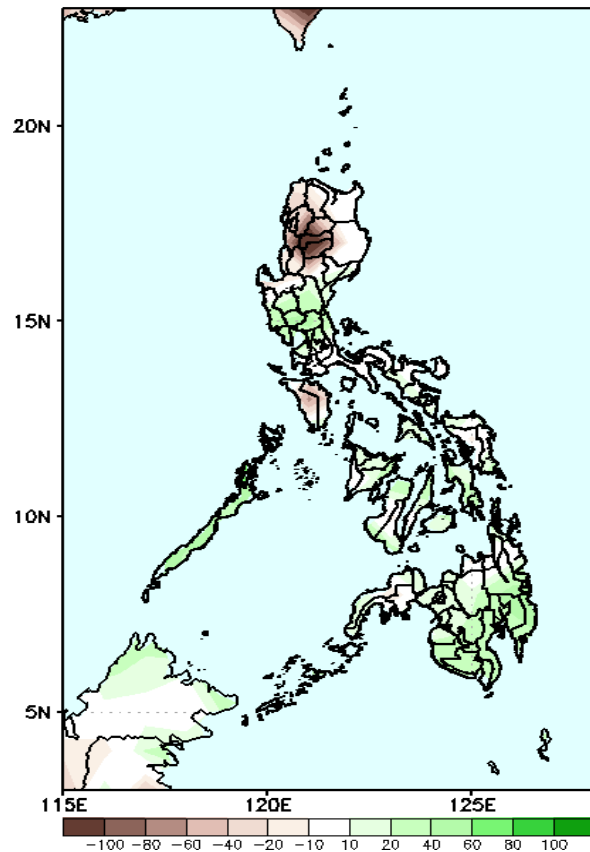


Southwest Monsoon affecting the western section of the country while Easterlies affecting the eastern side during the forecast period.

Precipitation Anomaly and Exceedance Probability > 25/50 mm

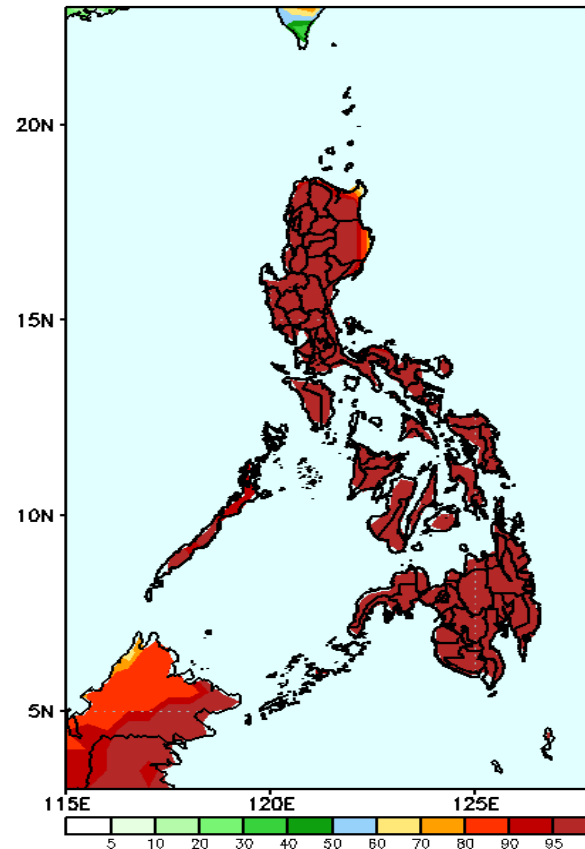
Week 1: Jul 11 - Jul 17, 2022

GEFS Week-1 Precip Anomaly
Valid: 20220711 - 20220717



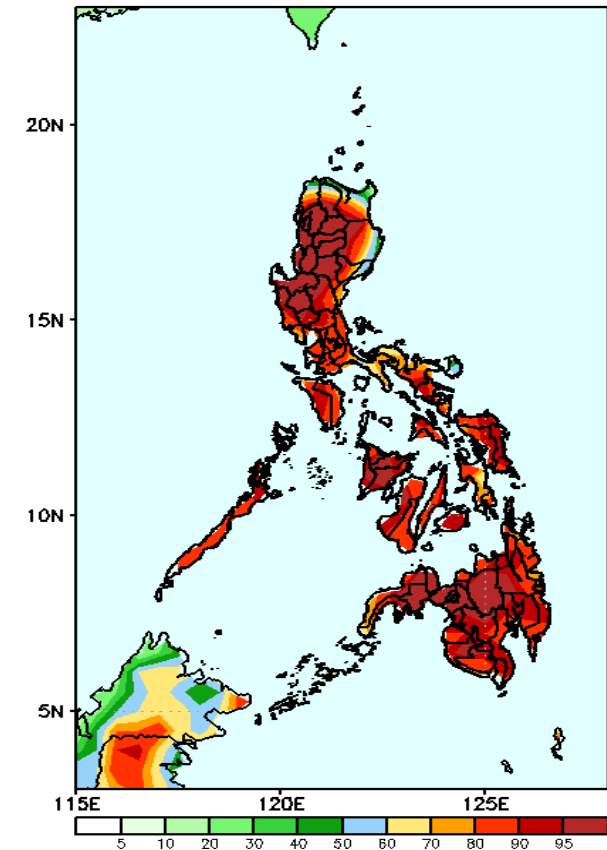
40 – 100mm rainfall deficit will be likely in most parts of Northern Luzon and Mindoro provinces and while an increase of rainfall of 20 – 60mm is expected for the rest of the country during the forecast period .

GEFS Week-1 Exceedance Prob. > 25mm
Valid: 20220711 - 20220717



High probability of rainfall to exceed 25mm in most parts of the country during the forecast period.

GEFS Week-1 Exceedance Prob. > 50mm
Valid: 20220711 - 20220717

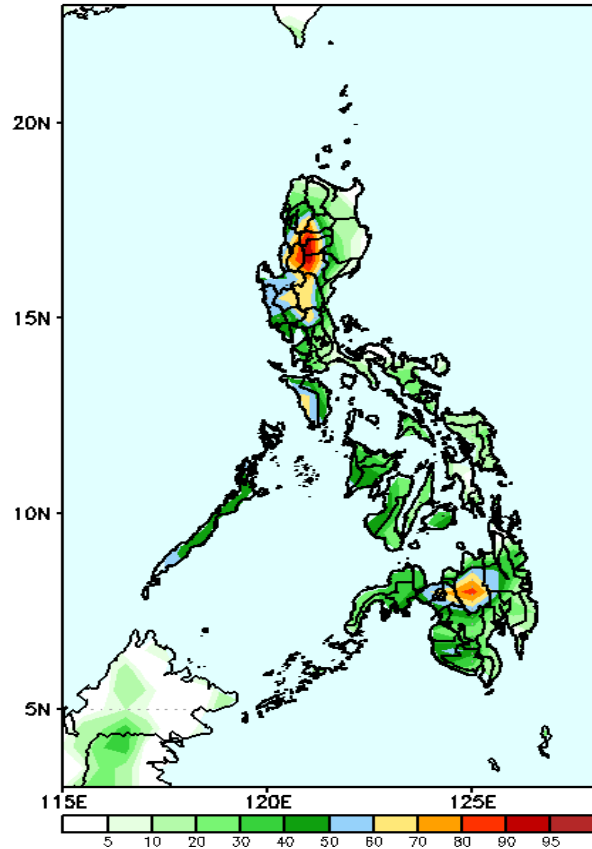


High probability of rainfall to exceed 50mm in most parts of the country during the forecast period.

Exceedance Probability > 100/150/200 mm

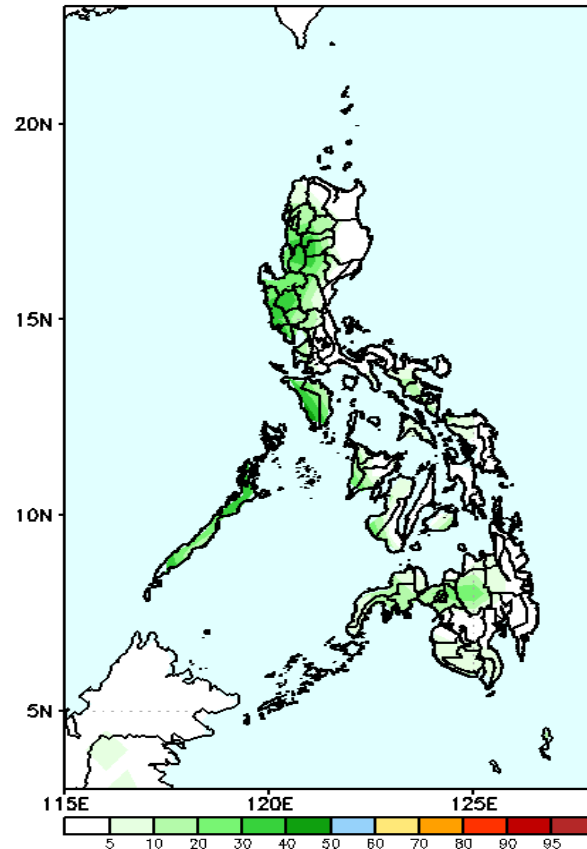
Week 1: Jul 11 - Jul 17, 2022

GEFS Week-1 Exceedance Prob. > 100mm
Valid: 20220711 - 20220717



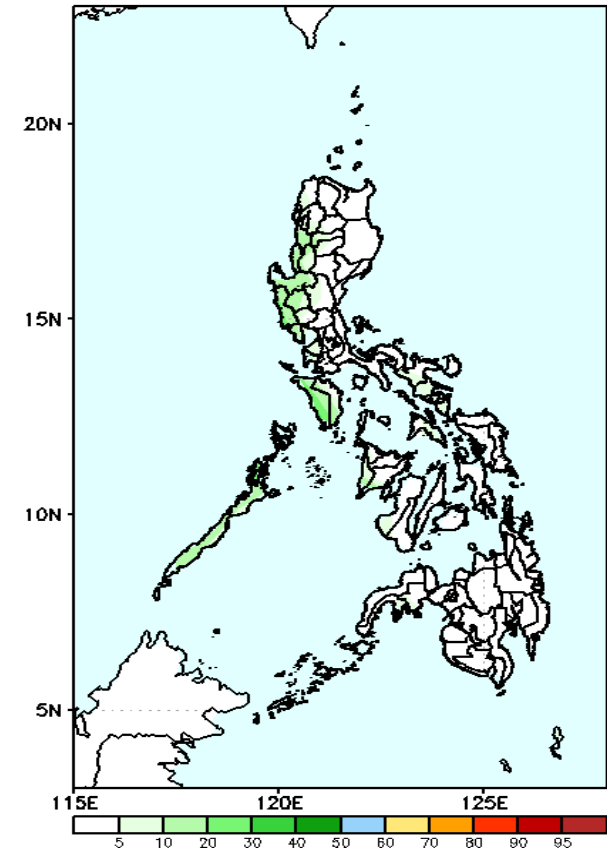
Low probability of rainfall to exceed 100mm in most parts of the country except for some areas in CAR, Central Luzon and Bukidnon where high probability is expected during the forecast period.

GEFS Week-1 Exceedance Prob. > 150mm
Valid: 20220711 - 20220717



Low probability of rainfall to exceed 150mm in most parts of the country during the forecast period.

GEFS Week-1 Exceedance Prob. > 200mm
Valid: 20220711 - 20220717

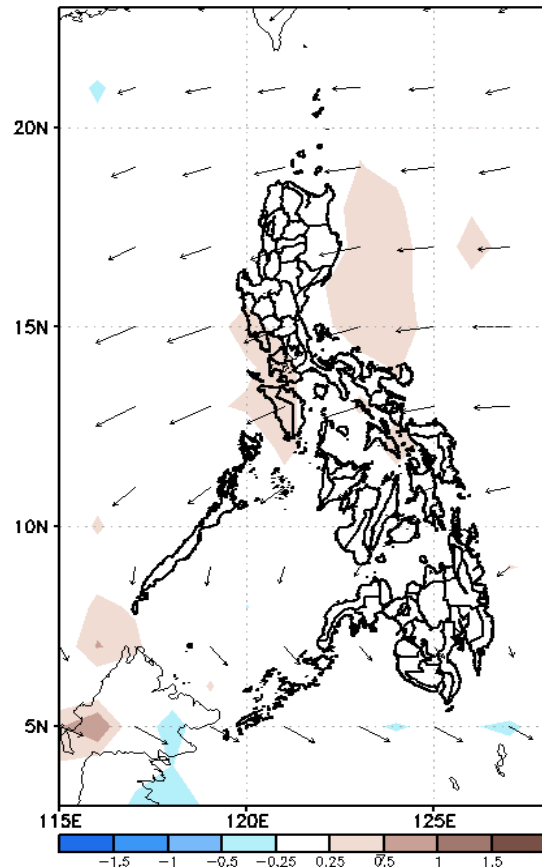


Low probability of rainfall to exceed 200mm in most parts of the country during the forecast period.

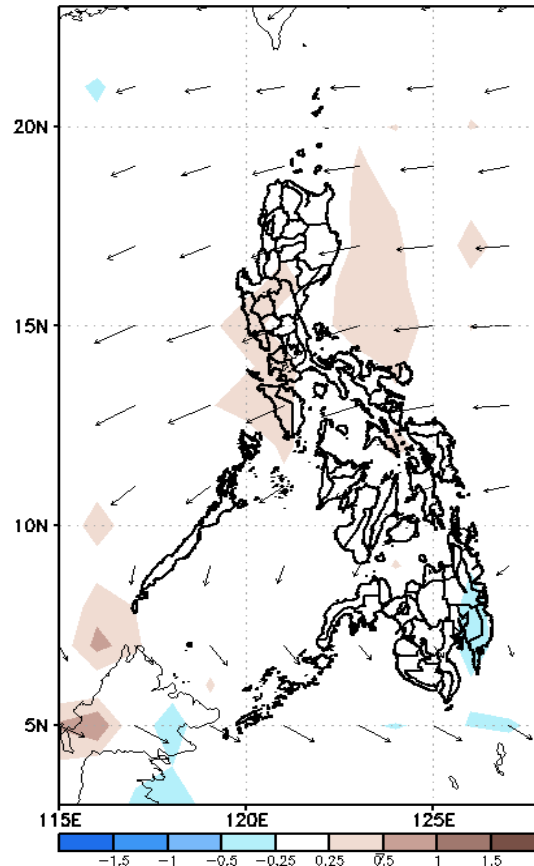
GEFS Week-2 Forecasts: Wind Anomaly Forecast

Week 2: Jul 18 - Jul 24, 2022

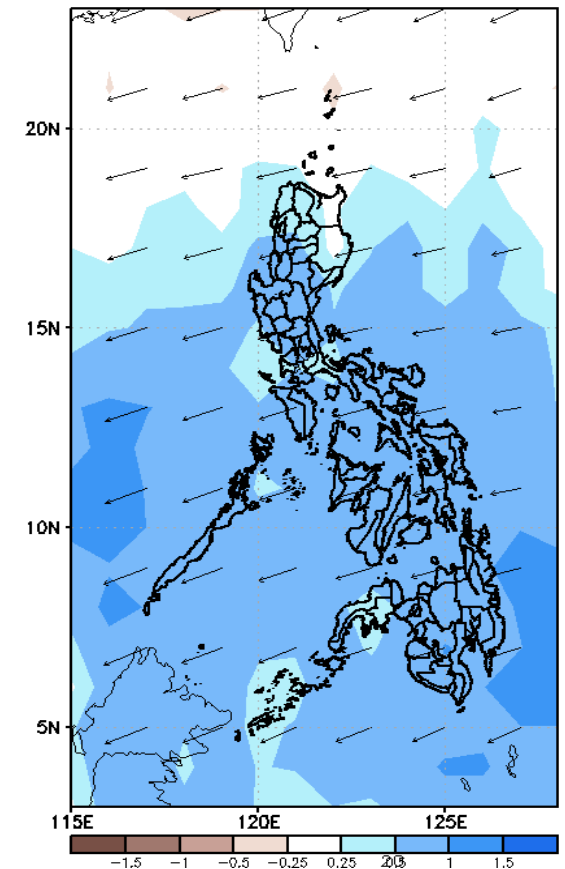
GEFS Week-2 850-hPa Divergence and Wind Anomaly
Valid: 20220718 - 20220724



GEFS Week-2 700-hPa Divergence and Wind Anomaly
Valid: 20220718 - 20220724



GEFS week-2 200-hPa Divergence and Wind Anomaly
Valid: 20220718 - 20220724

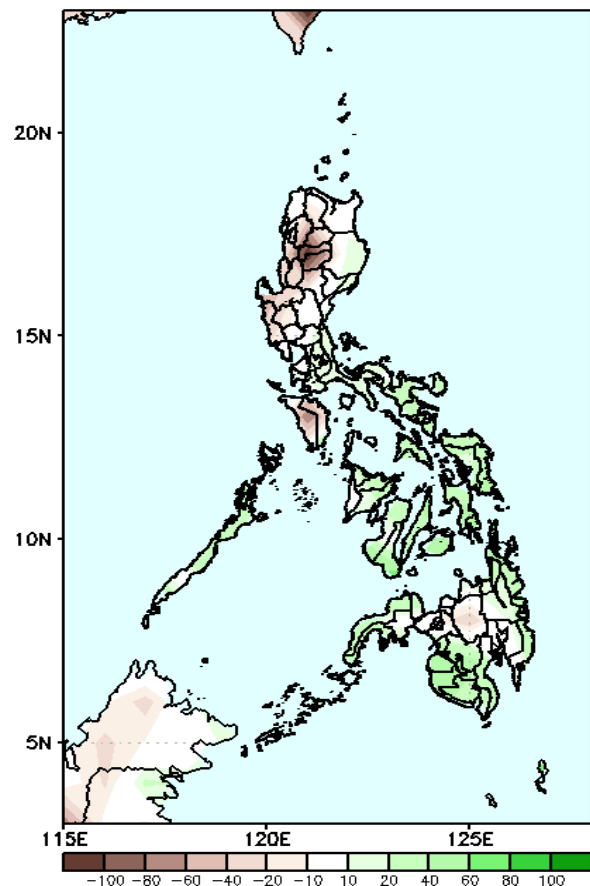


Easterlies affecting most parts of the country during the forecast period.

Precipitation Anomaly and Exceedance Probability > 25/50 mm

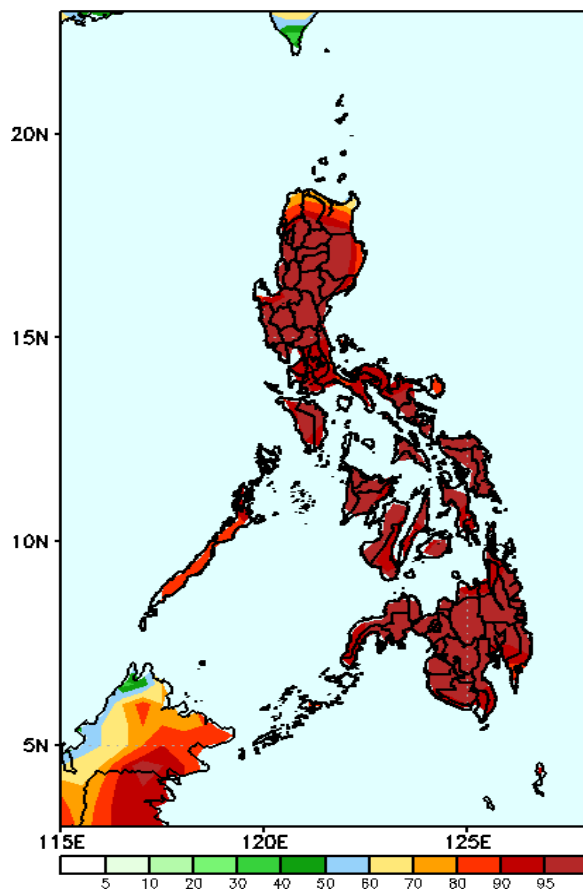
Week 2: Jul 18 - Jul 24, 2022

GEFS Week-2 Precip. Anomaly
Valid: 20220718 - 20220724



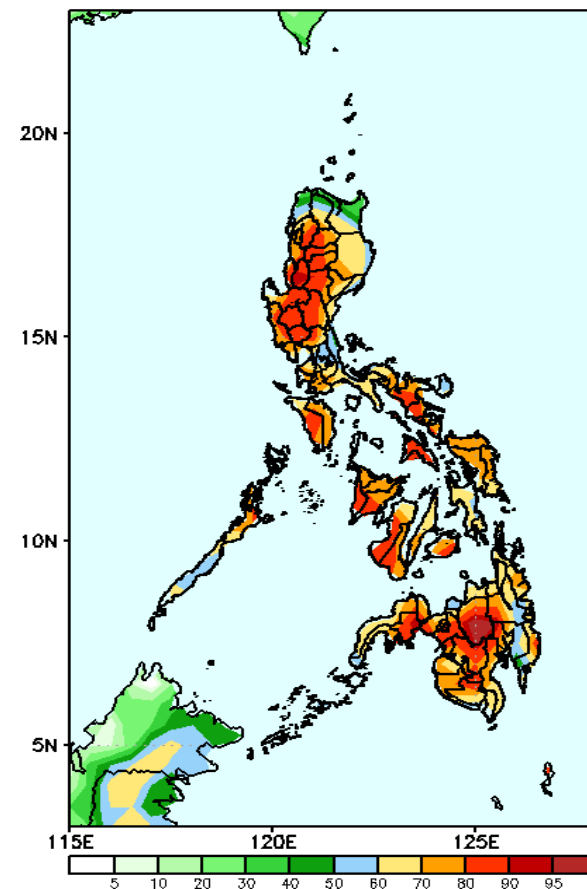
40 – 80mm rainfall deficit will be likely in most parts of Luzon (except Bicol region) and while an increase of rainfall of 20 – 60mm is expected for the rest of the country during the forecast period.

GEFS Week-2 Exceedance Prob. > 25mm
Valid: 20220718 - 20220724



High probability of rainfall to exceed 25mm in most parts of the country during the forecast period.

GEFS Week-2 Exceedance Prob. > 50mm
Valid: 20220718 - 20220724

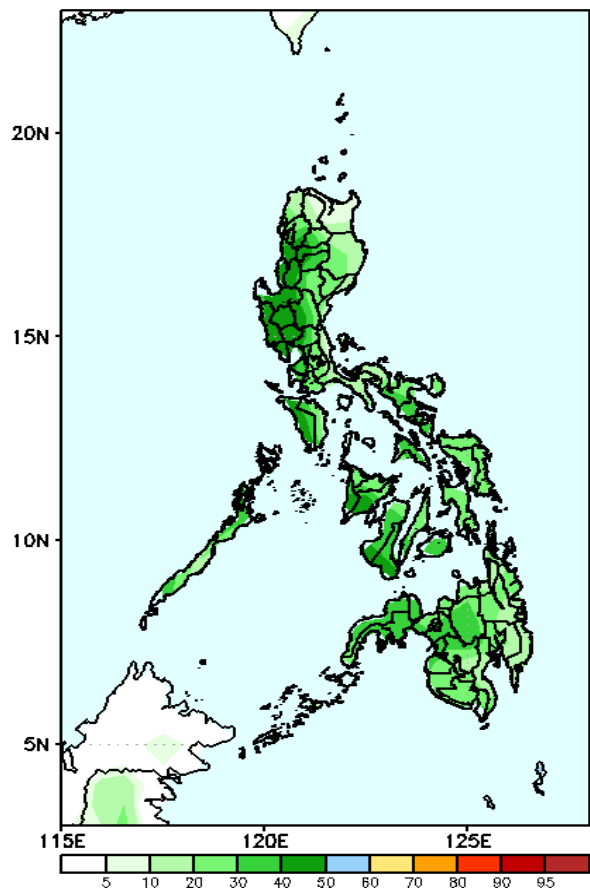


High probability of rainfall to exceed 50mm in most parts of the country during the forecast period

Exceedance Probability > 100/150/200 mm

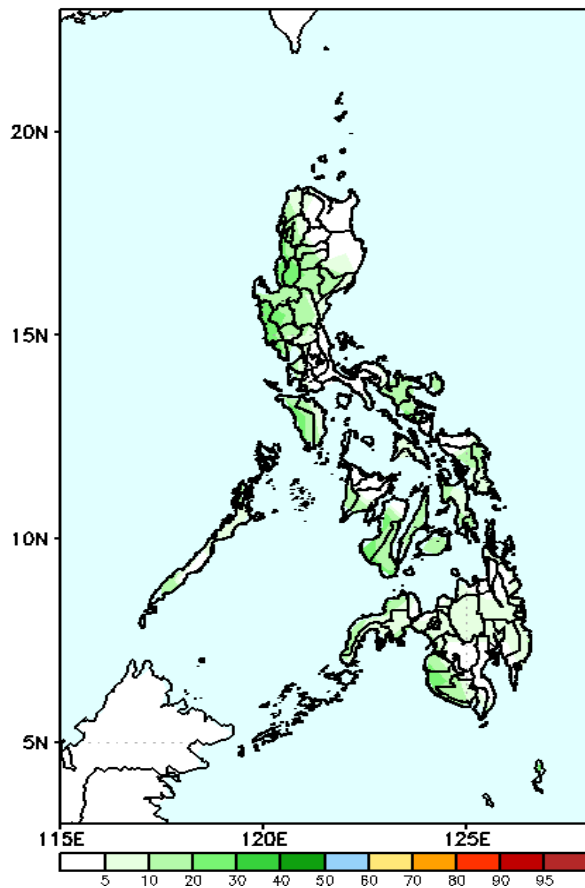
Week 2: Jul 18 - Jul 24, 2022

GEFS Week-2 Exceedance Prob. > 100mm
Valid: 20220718 - 20220724



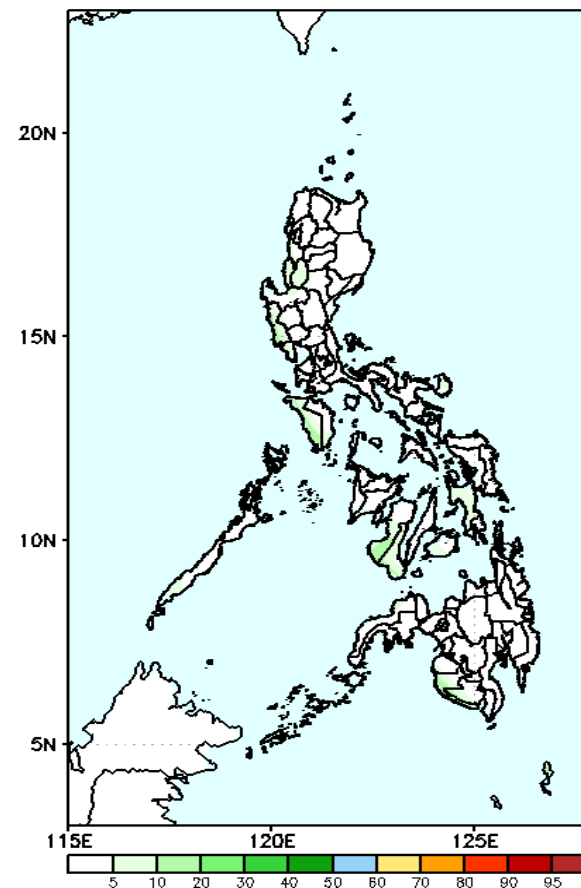
Low probability of rainfall to exceed 100mm in most parts of the country except Mindoro Occidental during the forecast period.

GEFS Week-2 Exceedance Prob. > 150mm
Valid: 20220718 - 20220724



Low probability of rainfall to exceed 150mm in most parts of the country during the forecast period.

GEFS Week-2 Exceedance Prob. > 200mm
Valid: 20220718 - 20220724



Low probability of rainfall to exceed 200mm in most parts of the country during the forecast period.

