

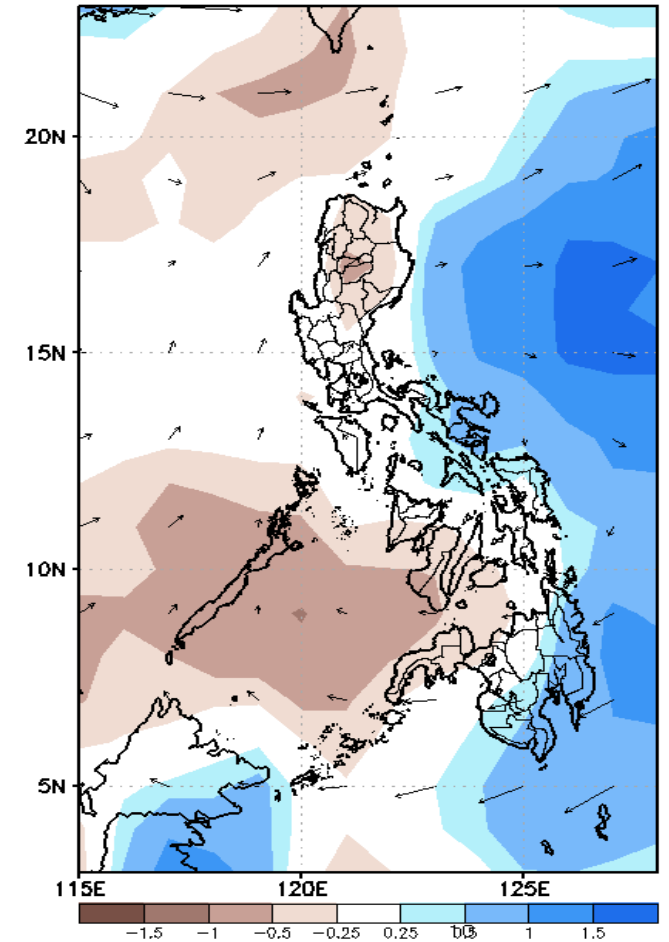
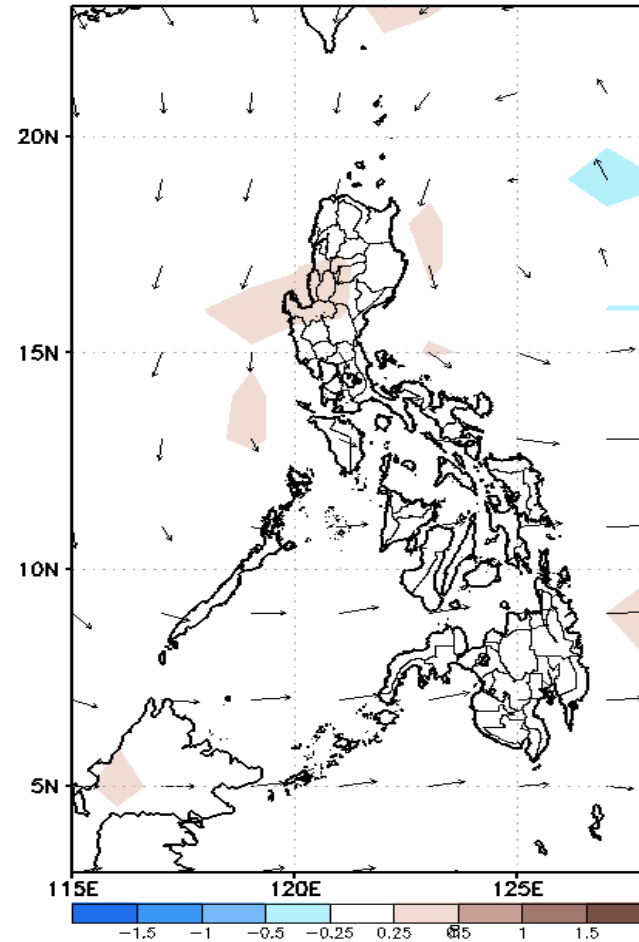
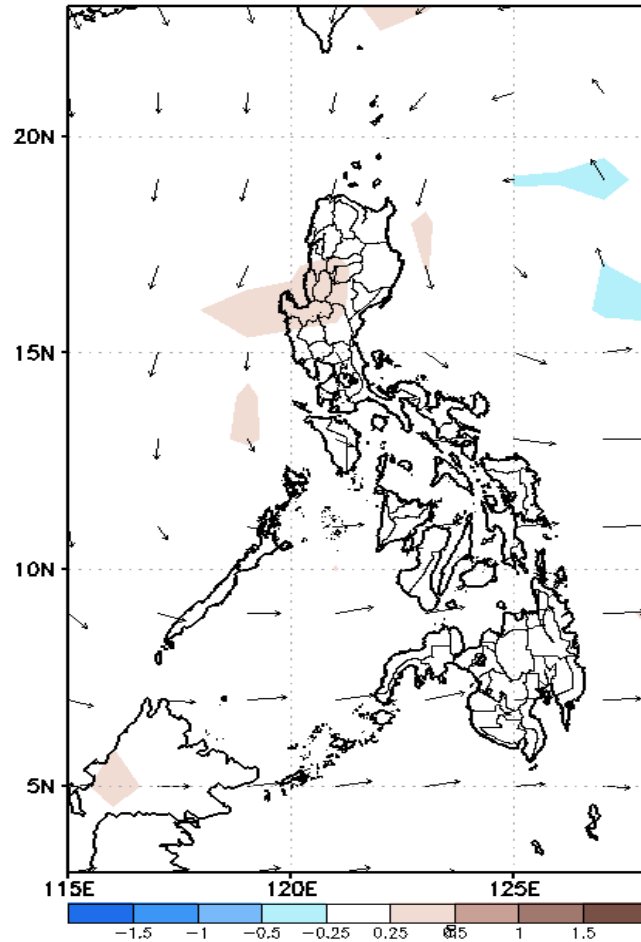
Week 1 & Week 2 Forecast for the Philippines using GEFS Model



GEFS Week-1 Forecasts: Divergence & Wind Anomaly

Week 1: May 11- May 17, 2020

GEFS Week-1 850-hPa Divergence and Wind Anom GEFS Week-1 700-hPa Divergence and Wind Anom GEFS Week-1 200-hPa Divergence and Wind Anom
Valid: 20200511 - 20200517 Valid: 20200511 - 20200517 Valid: 20200511 - 20200517

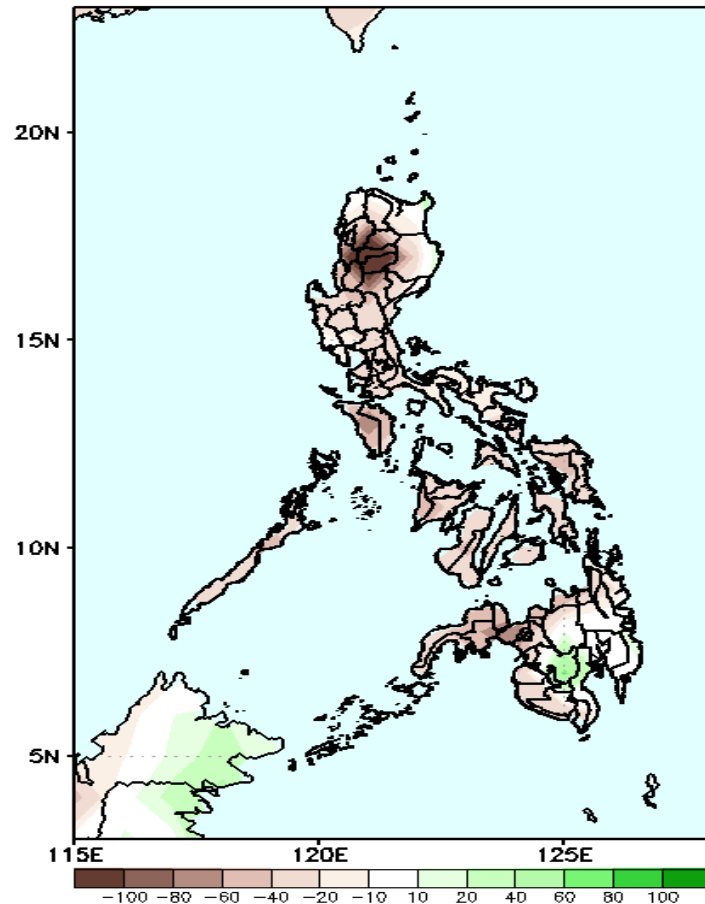


Upper level (750 hPa) Divergence suggest likelihood of precipitation in southern Luzon, eastern Visayas and eastern Mindanao due to localized and widespread thunderstorm activity. Southwest Monsoon affecting Mindanao, easterlies affecting most parts of Luzon and Visayas during the forecast period.

Precipitation Anomaly and Exceedance Probability > 25/50 mm

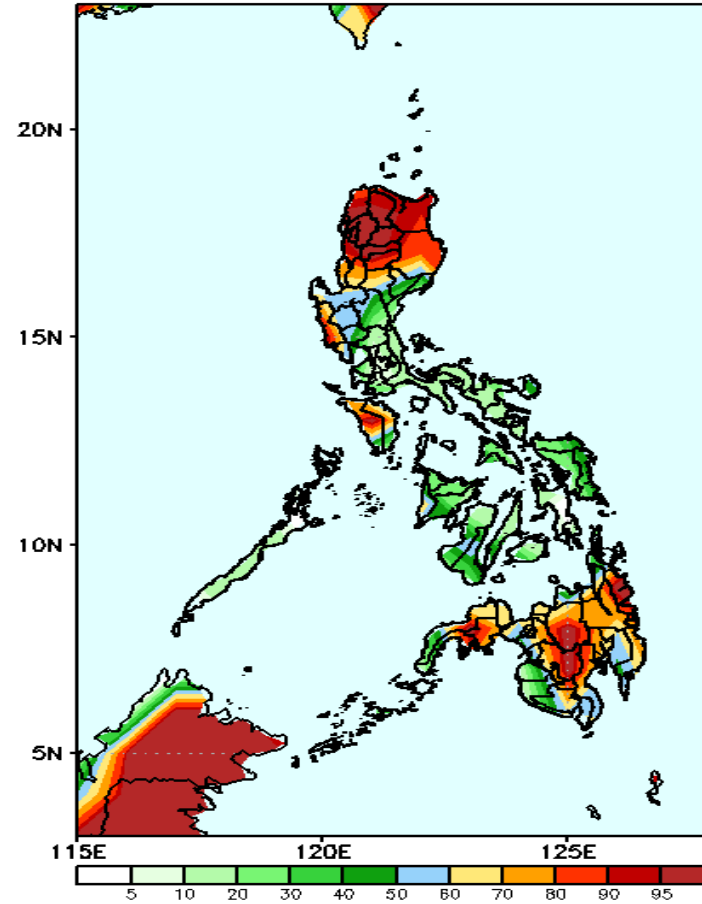
Week 1: May 11- May 17, 2020

GEFS Week-1 Precip Anomaly
Valid: 20200511 - 20200517



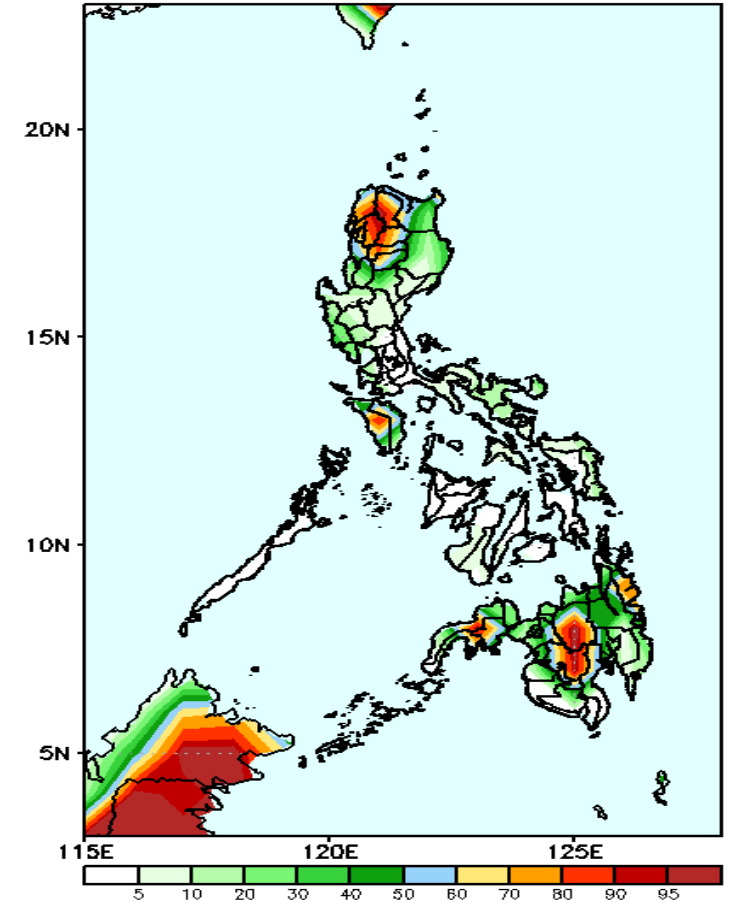
Rainfall deficit of 30-100mm in most part of the country is expected during the forecast period.

GEFS Week-1 Exceedance Prob. > 25mm
Valid: 20200511 - 20200517



High probability of rainfall to exceed 25mm in northern half of Luzon, Mindoro and most parts of Mindanao (except southern part) while less likely for the rest of the country during the forecast period.

GEFS Week-1 Exceedance Prob. > 50mm
Valid: 20200511 - 20200517

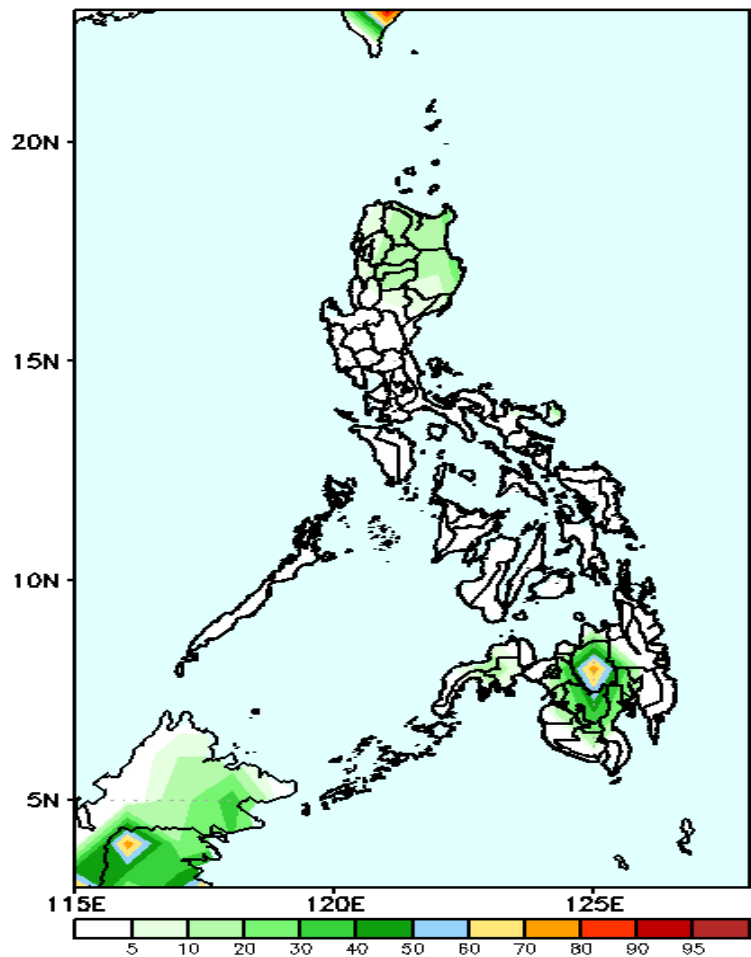


High probability of rainfall to exceed 50mm in Cordillera Region, Ilocos Norte, Bukidnon and North Cotabato while less likely for the rest of the country during the forecast period.

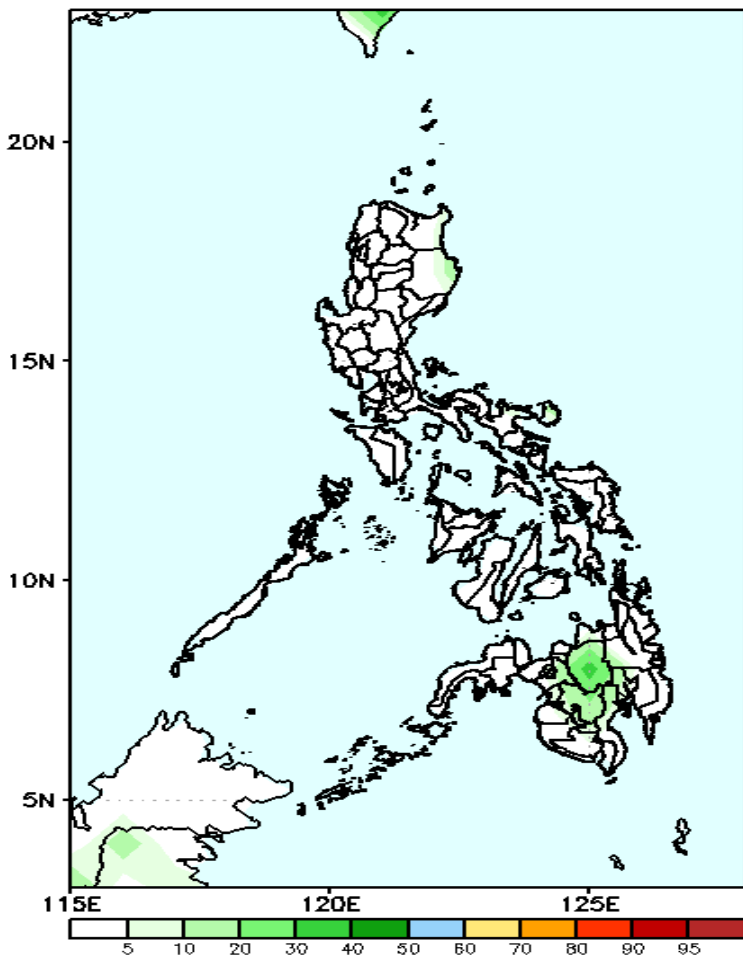
Exceedance Probability > 100/150/200 mm

Week 1: May 11- May 17, 2020

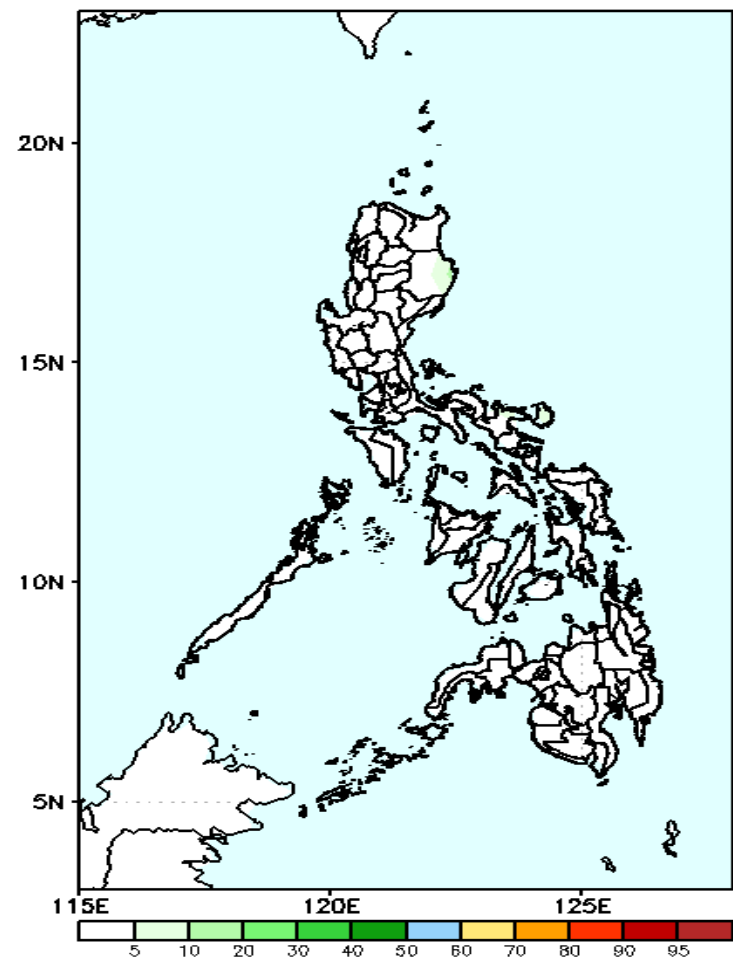
GEFS Week-1 Exceedance Prob. > 100mm GEFS Week-1 Exceedance Prob. > 150mm GEFS Week-1 Exceedance Prob. > 200mm
Valid: 20200511 – 20200517 Valid: 20200511 – 20200517 Valid: 20200511 – 20200517



Less probability of rainfall to exceed 100mm in most parts of the country except in Bukidnon where there is 60-80% chance during the forecast period.



Less probability of rainfall to exceed 150mm in most parts of the country during the forecast period.

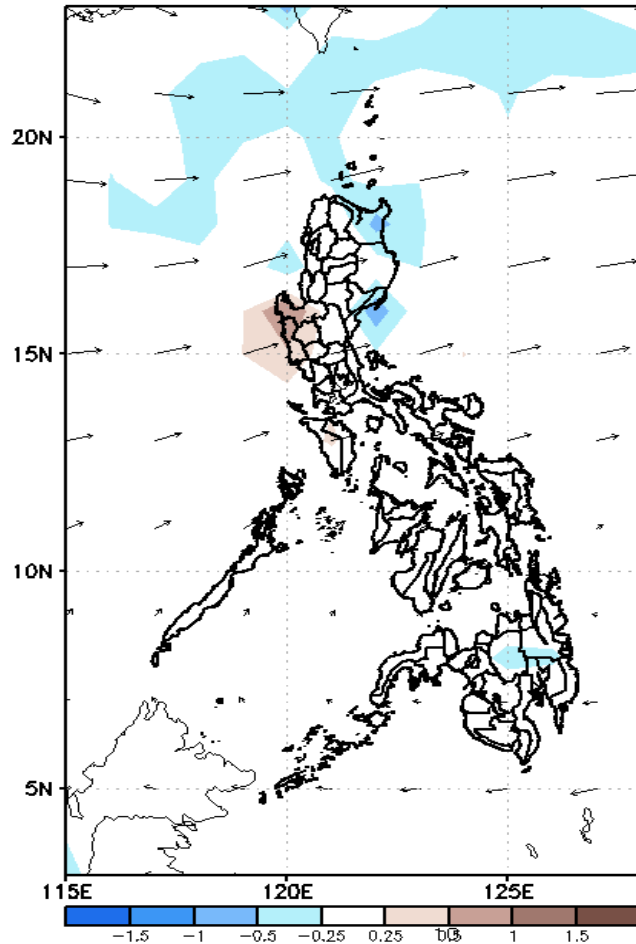


Less probability of rainfall to exceed 200mm in most parts of the country during the forecast period.

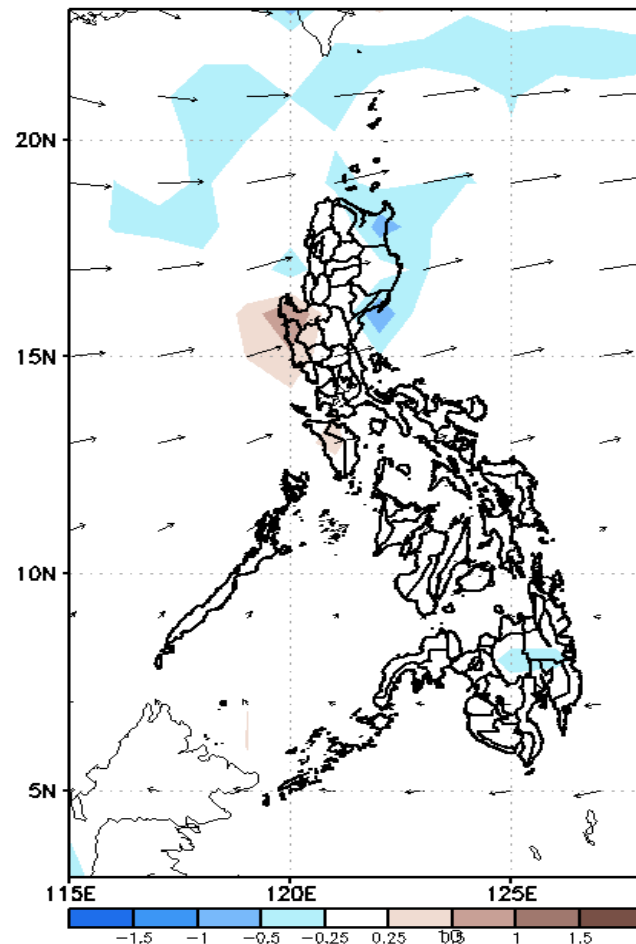
GEFS Week-2 Forecasts: Divergence & Wind Anomaly

Week 2: May 18-24, 2020

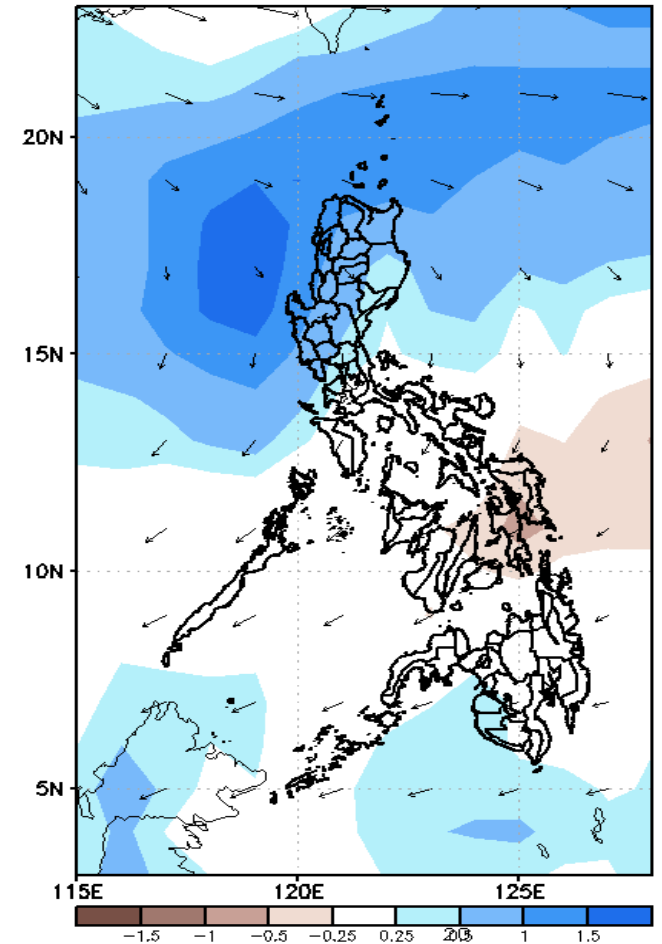
GEFS Week-2 850-hPa Divergence and Wind Anom
Valid: 20200518 - 20200524



GEFS Week-2 700-hPa Divergence and Wind Anom
Valid: 20200518 - 20200524



GEFS week-2 200-hPa Divergence and Wind Anom
Valid: 20200518 - 20200524

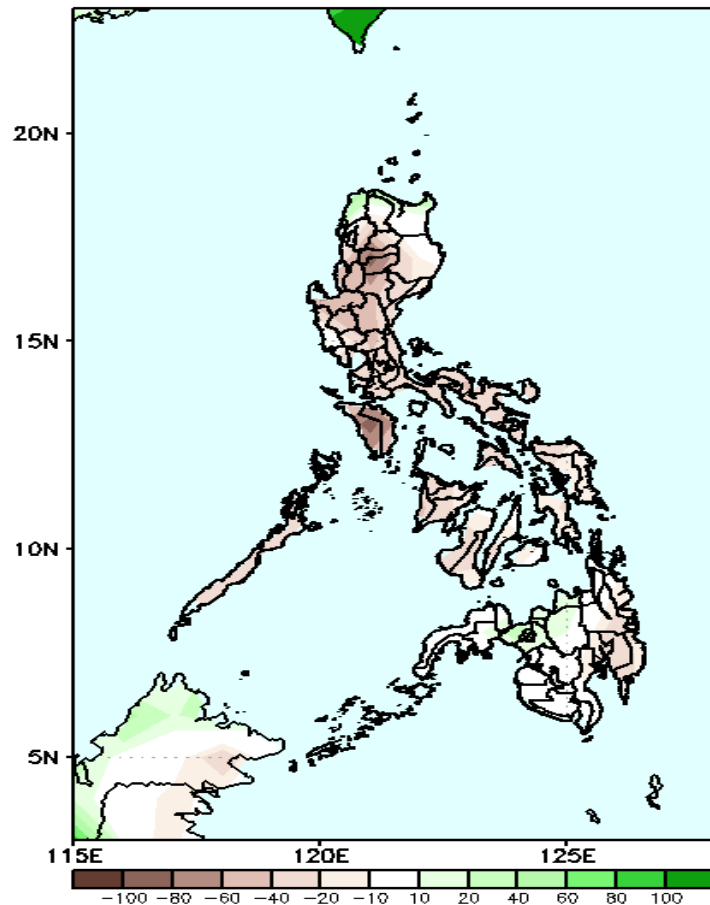


Upper level (750 hPa) Divergence suggest likelihood of precipitation in northern and central Luzon and southern Mindanao due to localized and widespread thunderstorm activity. Southwest Monsoon/SW windflow affecting most parts of the country during the forecast period.

Precipitation Anomaly and Exceedance Probability > 25/50 mm

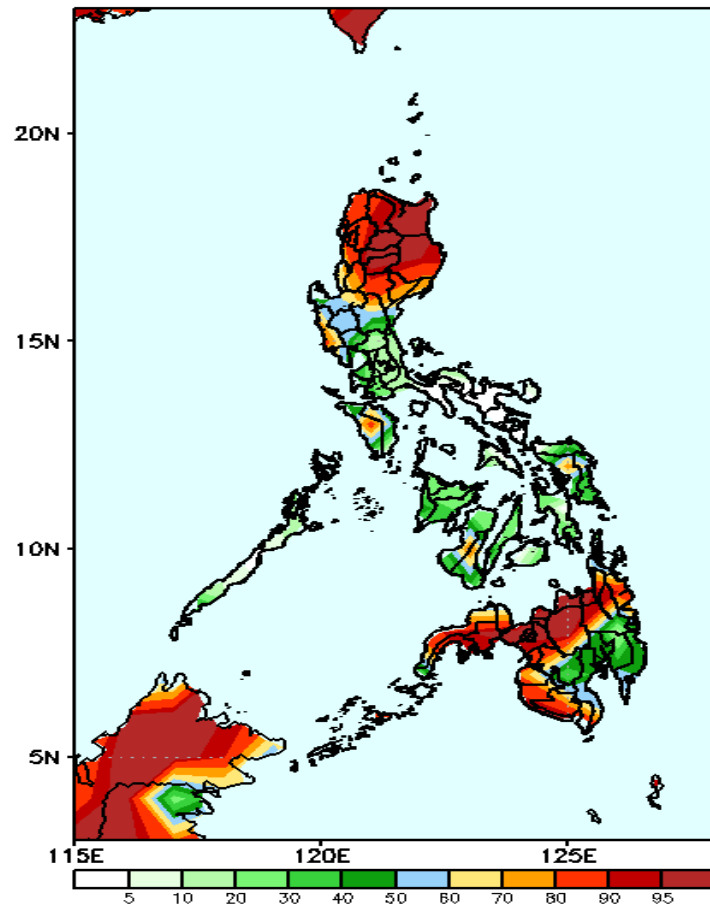
Week 2: May 18-24, 2020

GEFS Week-2 Precip Anomaly
Valid: 20200518 - 20200524



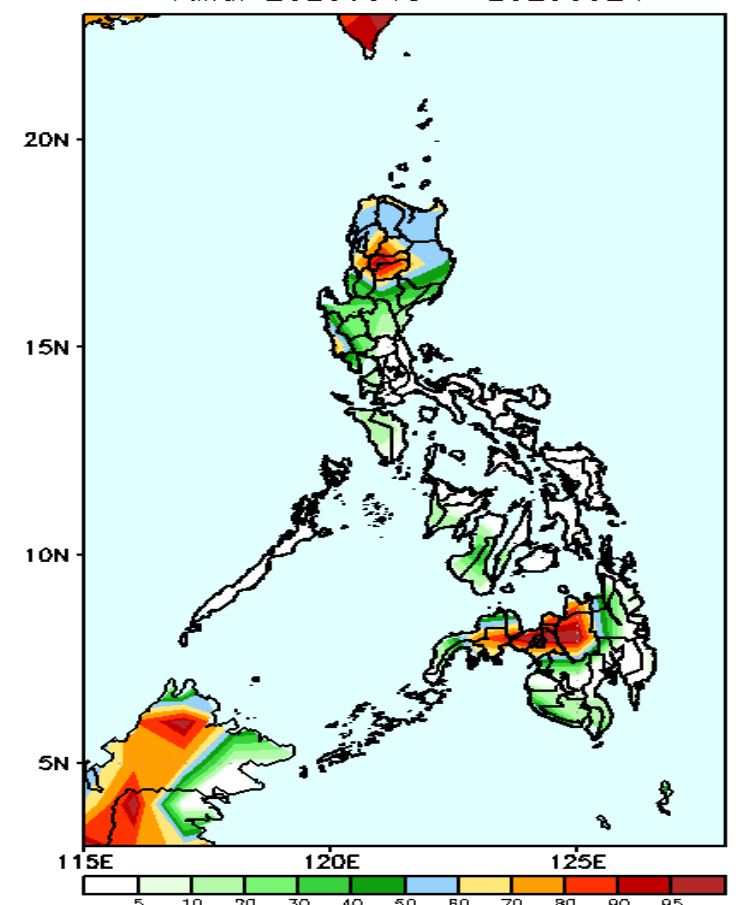
Rainfall deficit of up to 80mm is expected in most part of the country is expected during the forecast period. .

GEFS Week-2 Exceedance Prob. > 25mm
Valid: 20200518 - 20200524



High probability of rainfall to exceed 25mm in northern half of Luzon and in northern and western parts of Mindanao while less likely for the rest of the country during the forecast period.

GEFS Week-2 Exceedance Prob. > 50mm
Valid: 20200518 - 20200524

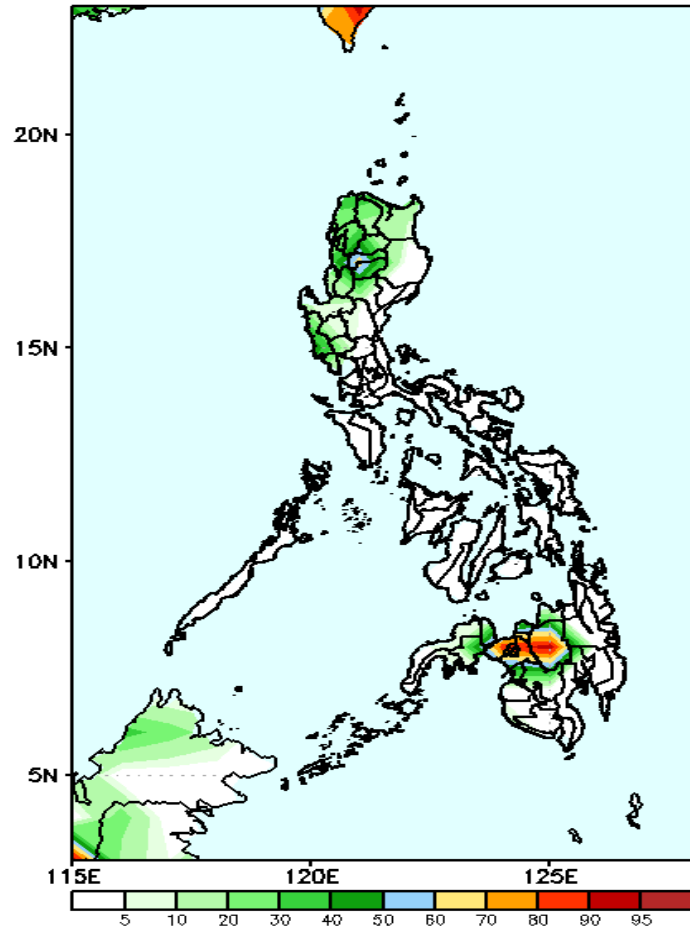


High probability of rainfall to exceed 50mm in Kalinga, Mt. Province, Ifugao, Northern Mindanao and Zamboanga del Sur while less likely for the rest of the country during the forecast period

Exceedance Probability > 100/150/200 mm

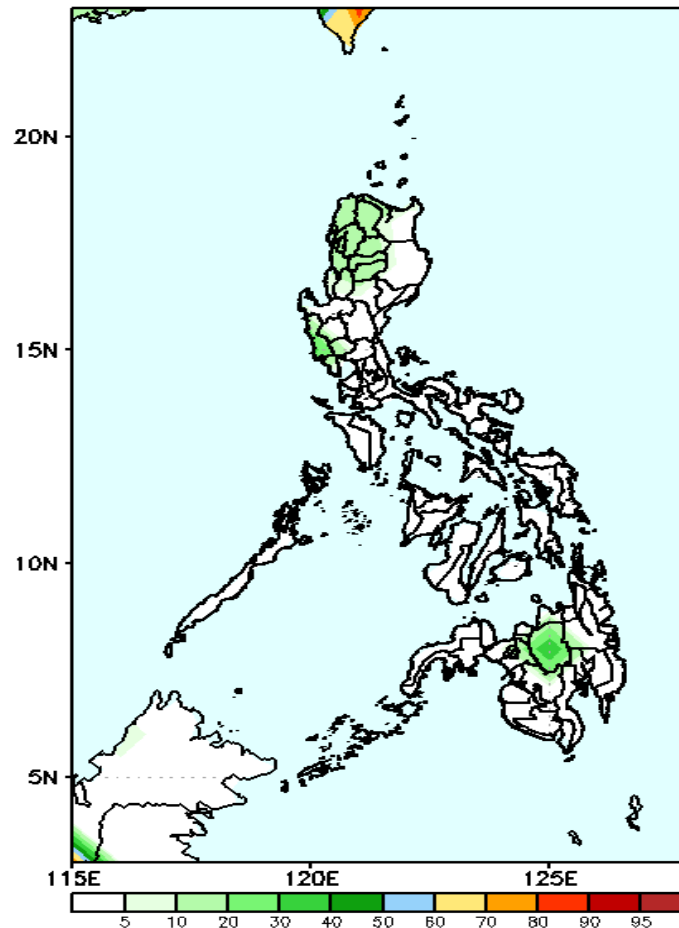
Week 2: May May 18-24, 2020

GEFS Week-2 Exceedance Prob. > 100mm
Valid: 20200518 - 20200524



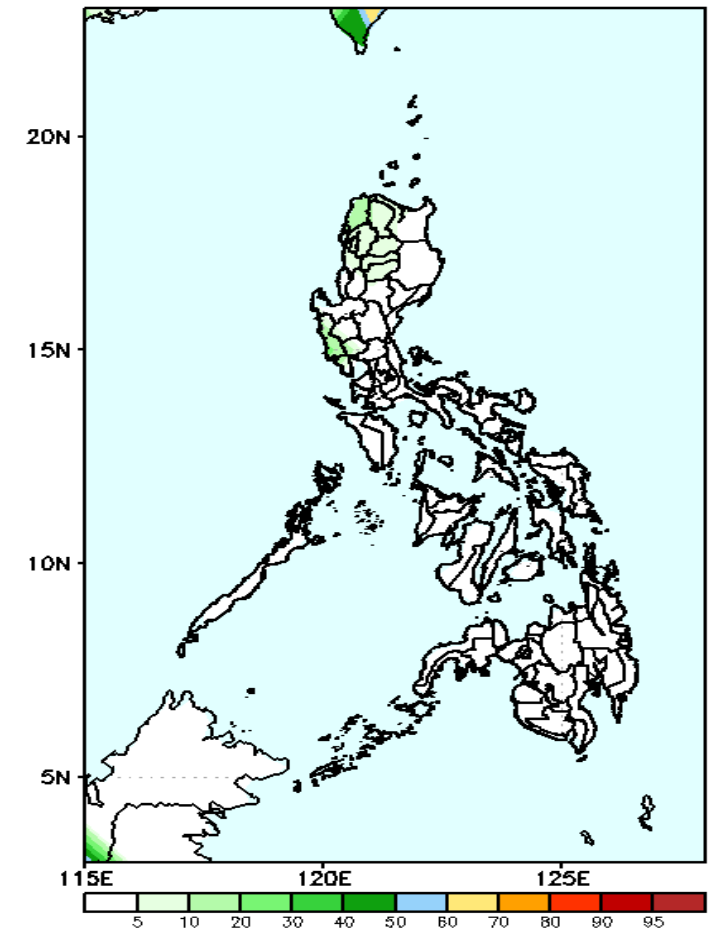
High probability of rainfall to exceed 100mm in Bukidnon and Lanao del Sur while less probability for the rest of the country during the forecast period.

GEFS Week-2 Exceedance Prob. > 150mm
Valid: 20200518 - 20200524



Less probability of rainfall to exceed 150mm in most parts of the country during the forecast period.

GEFS Week-2 Exceedance Prob. > 200mm
Valid: 20200518 - 20200524

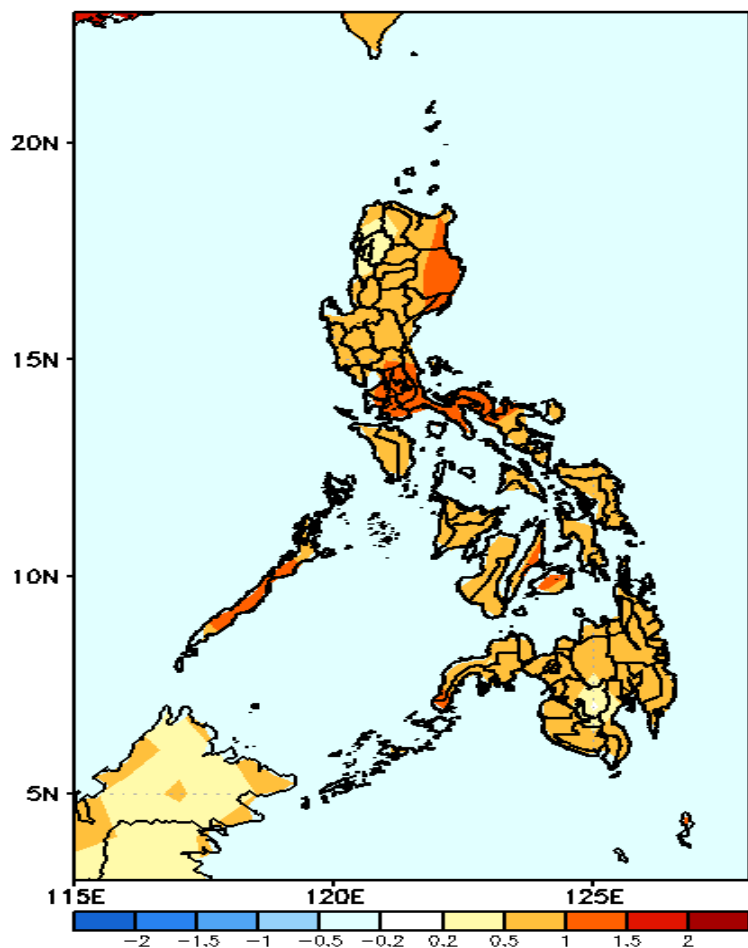


Less probability of rainfall to exceed 200mm in most parts of the country during the forecast period.



GEFS Week-1 & 2 Forecasts: T2m Anomaly

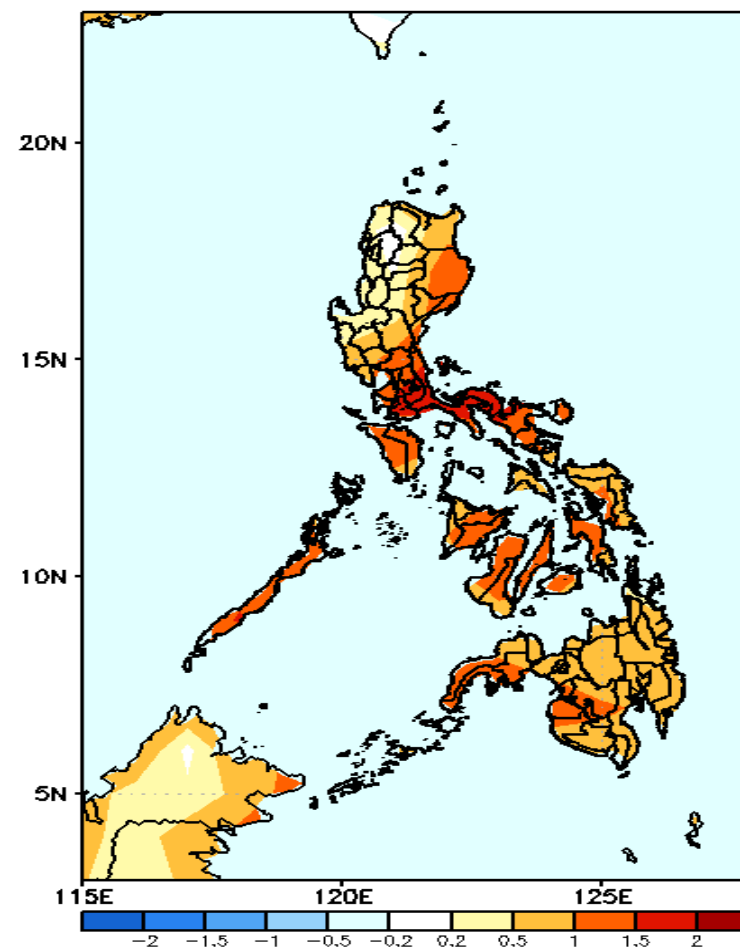
GEFS Week-1 T2m Anomaly
Valid: 20200511 - 20200517



2m Temperature Week 1: May 11- May 17, 2020

Slightly warmer to warmer than average surface air temperature will likely experience in most parts of the country is expected during the forecast period.

GEFS Week-2 T2m Anomaly
Valid: 20200518 - 20200524



2m Temperature Week 2: May 18-24, 2020

Warmer than average surface air temperature will likely experience in most parts of the country is expected during the forecast period.