



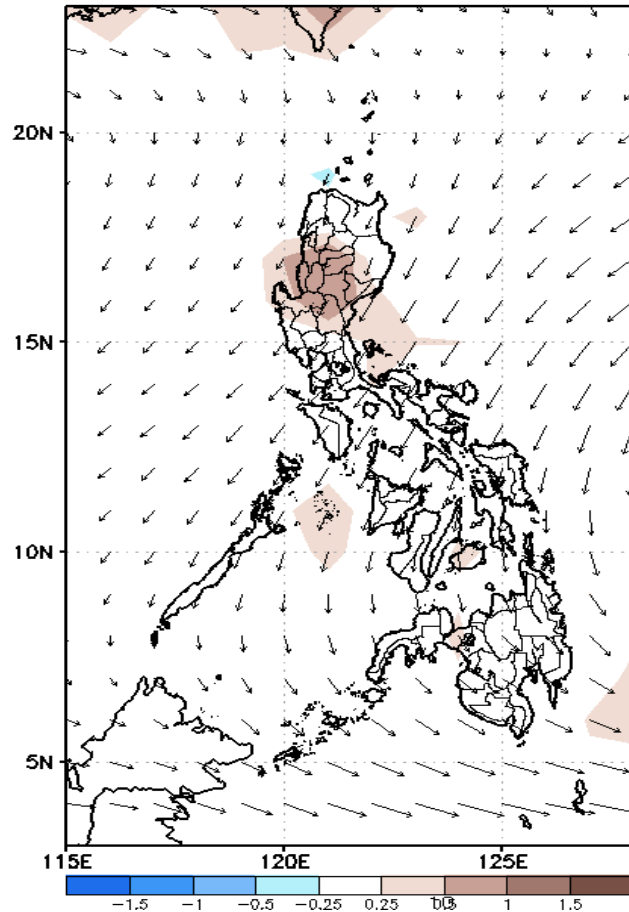
Week 1 & Week 2 Forecast for the Philippines using GEFS Model



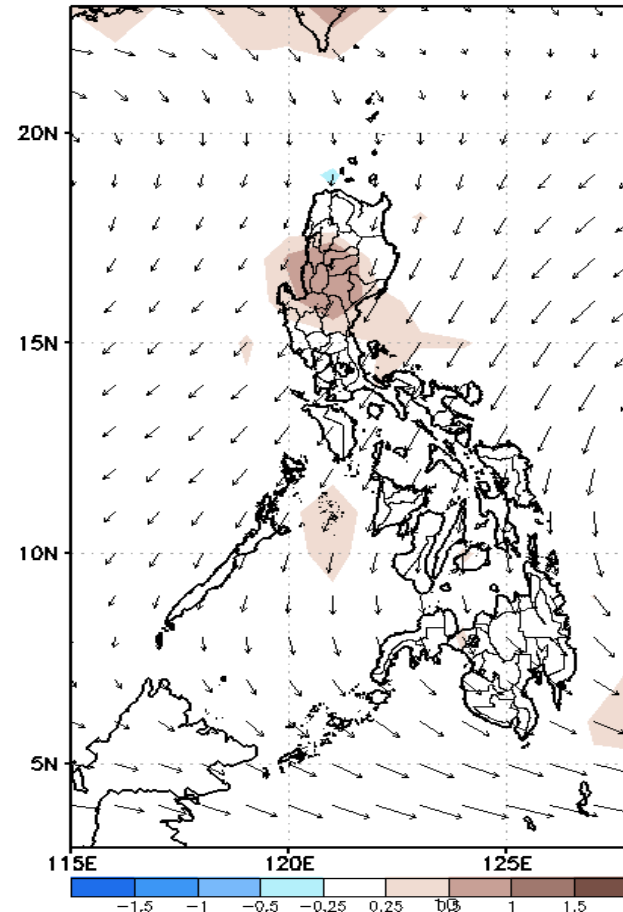
GEFS Week-1 Forecasts: Divergence & Wind Anomaly

Week 1: April 12-18, 2021

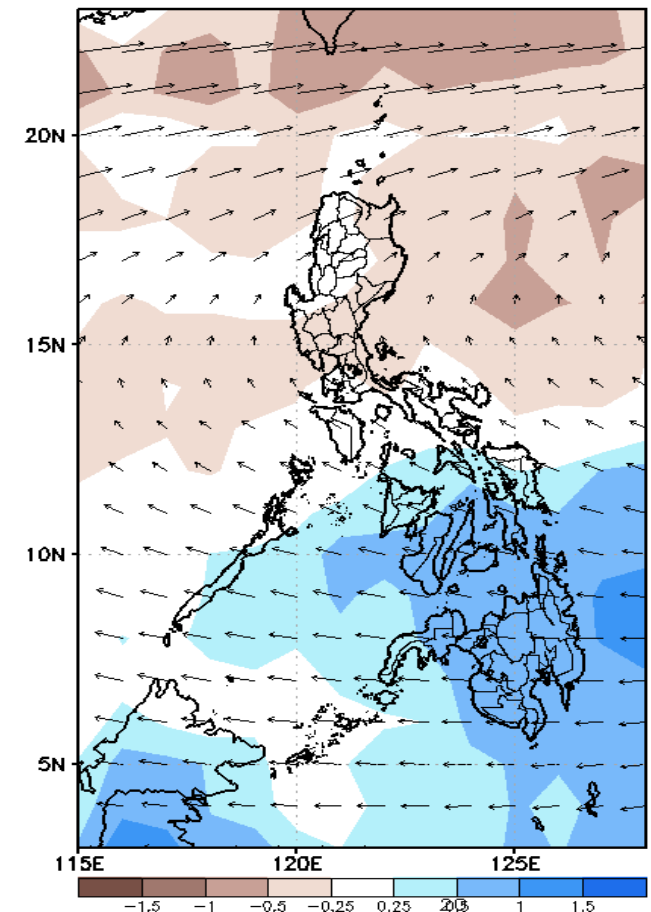
GEFS Week-1 850-hPa Divergence and Wind Anom
Valid: 20210412 - 20210418



GEFS Week-1 700-hPa Divergence and Wind Anom
Valid: 20210412 - 20210418



GEFS Week-1 200-hPa Divergence and Wind Anom
Valid: 20210412 - 20210418

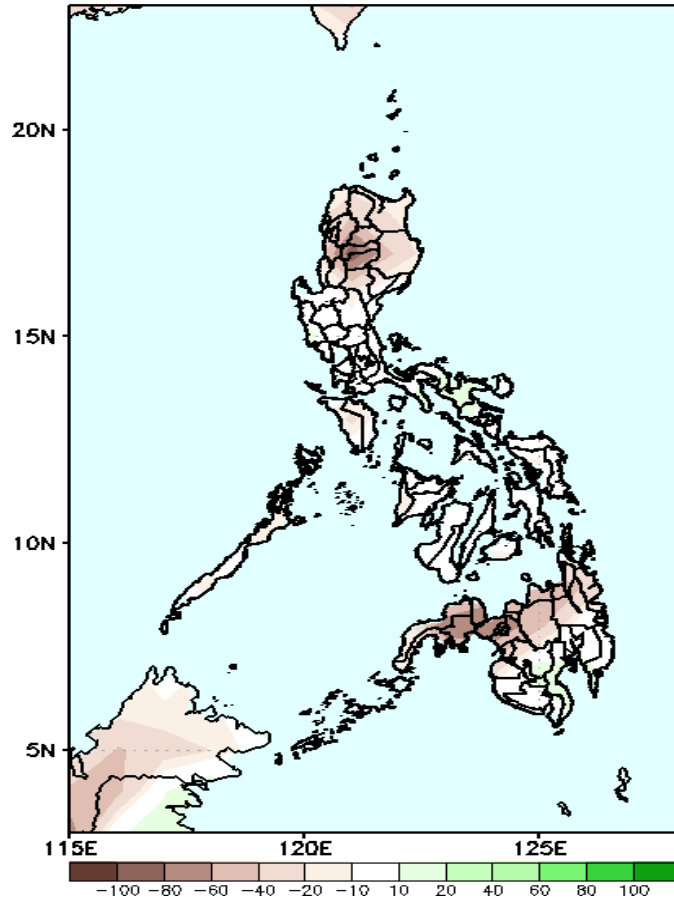


Upper and low level Divergence suggest high likelihood of precipitation in most parts of Visayas and Mindanao. Easterlies affecting most parts of the country attributing to warmer temperature during the forecast period.

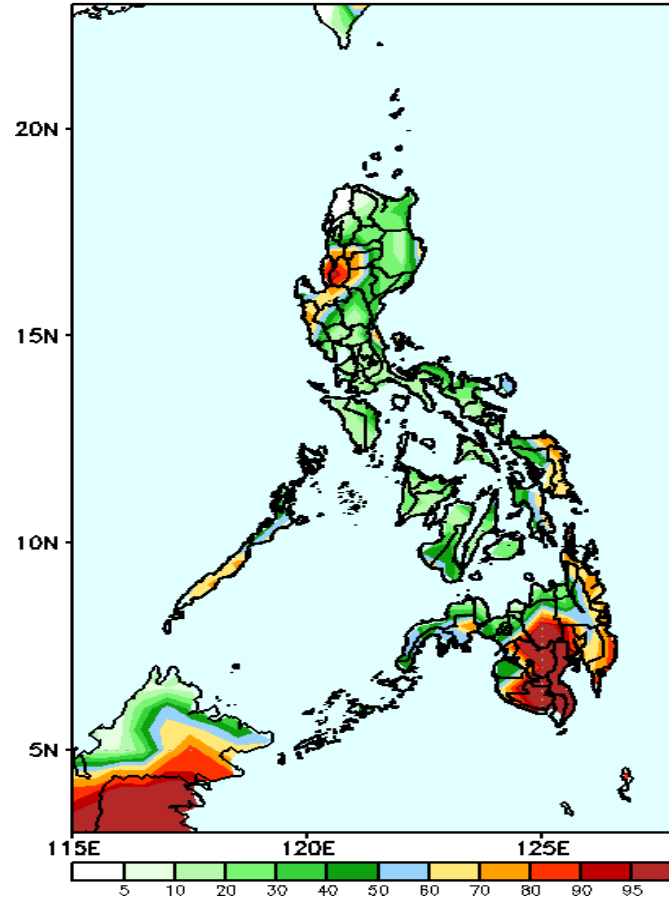
Precipitation Anomaly and Exceedance Probability > 25/50 mm

Week 1: April 12-18, 2021

GEFS Week-1 Precip Anomaly
Valid: 20210412 – 20210418

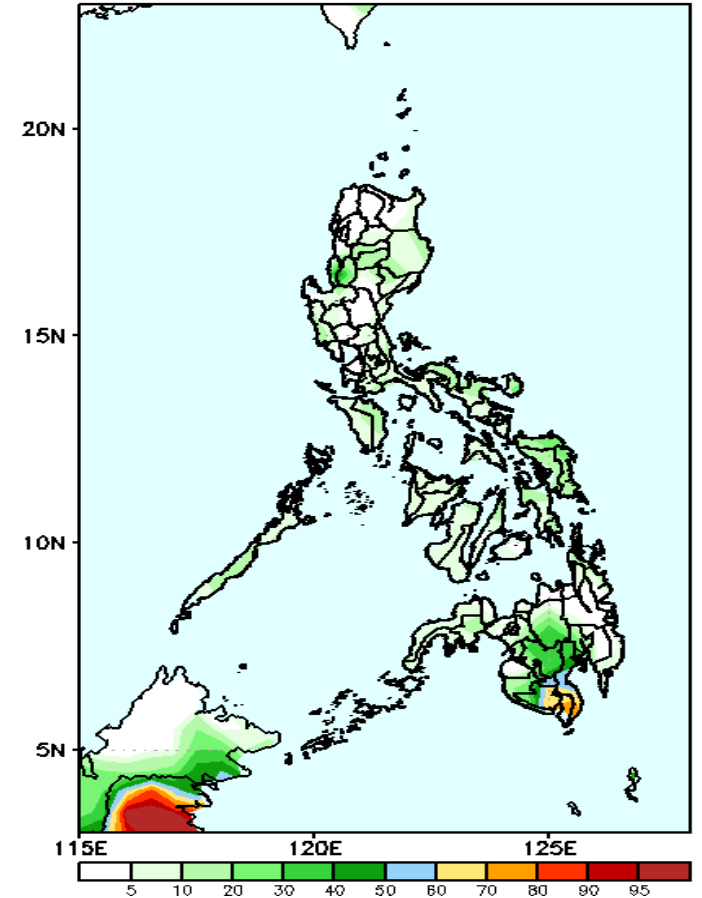


GEFS Week-1 Exceedance Prob. > 25mm
Valid: 20210412 – 20210418



High probability of rainfall to exceed 25mm in Benguet, La Union, parts of Palawan, Eastern Samar, and most parts of Mindanao while less likely for the rest of the country during the forecast period.

GEFS Week-1 Exceedance Prob. > 50mm
Valid: 20210412 – 20210418



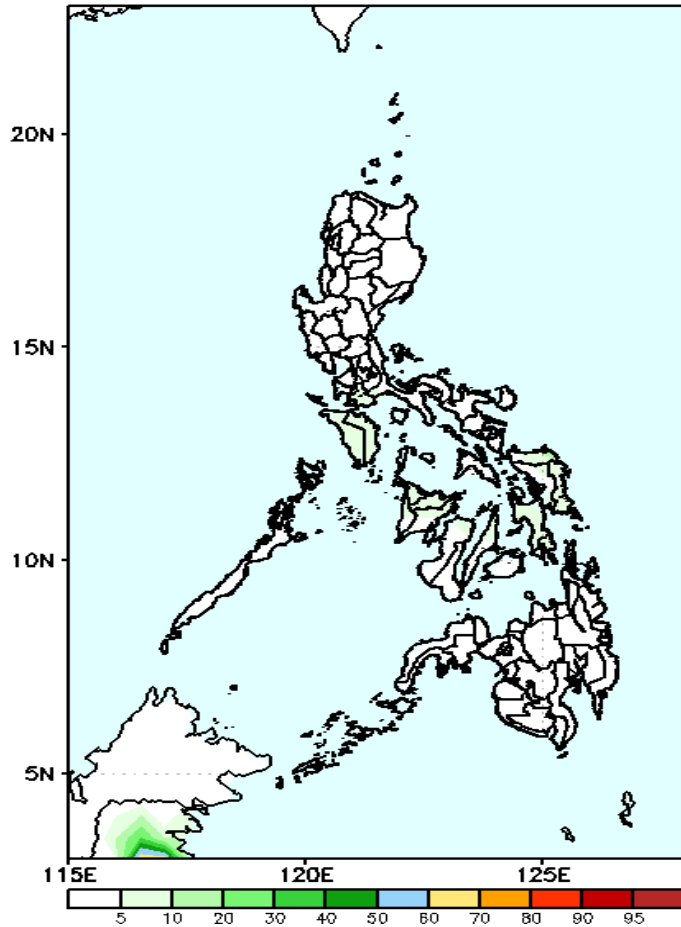
Less probability of rainfall to exceed 50mm in most parts of the country during the forecast period.



Exceedance Probability > 100/150/200 mm

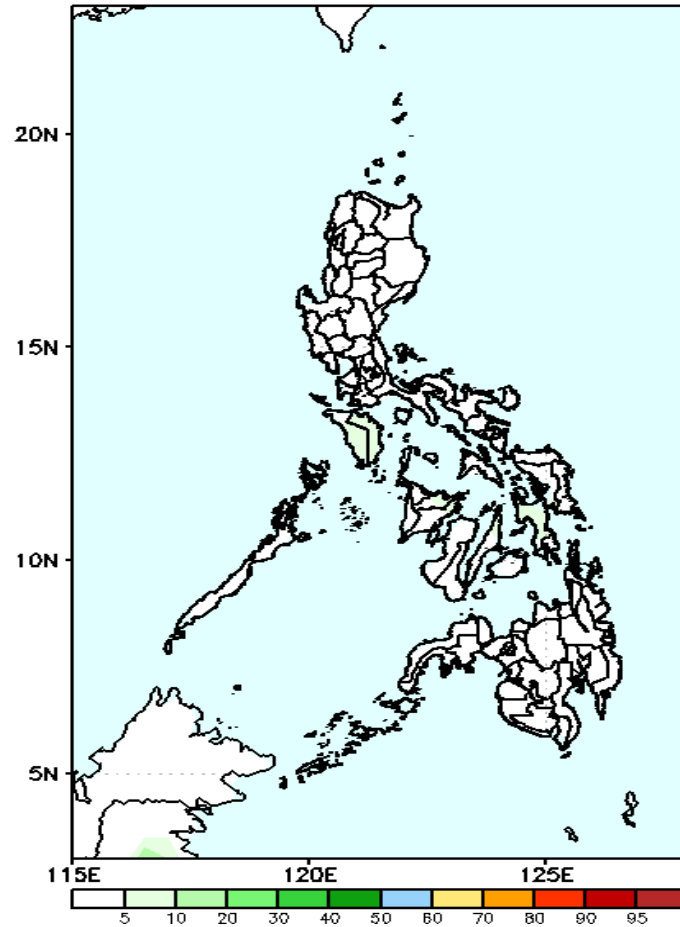
Week 1: April 12-18, 2021

GEFS Week-1 Exceedance Prob. > 100mm
Valid: 20210412 - 20210418



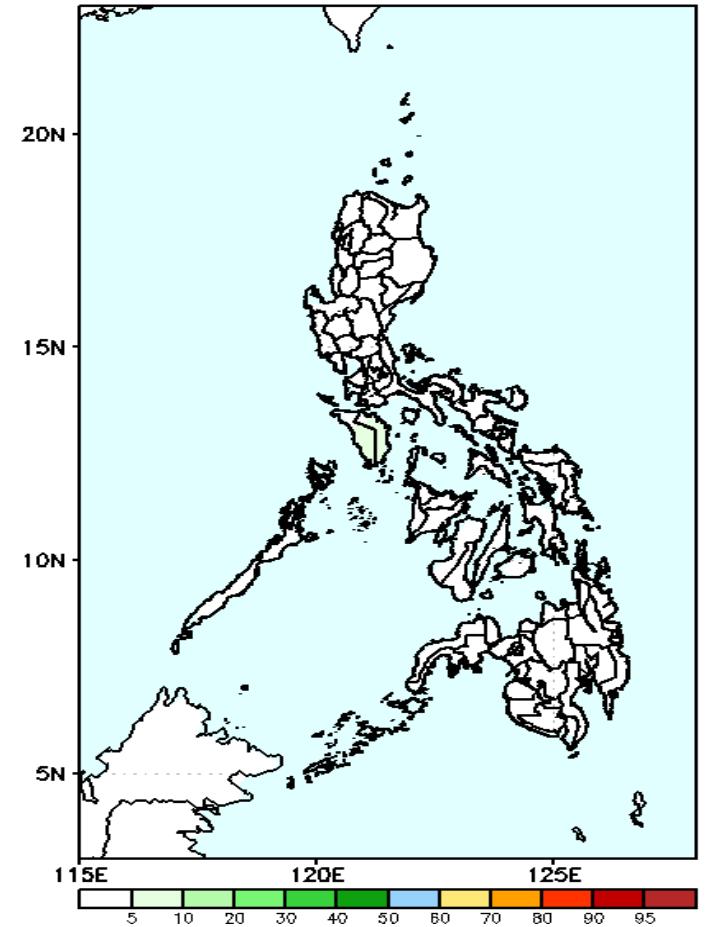
Less probability of rainfall to exceed 100mm in most parts of the country during the forecast period.

GEFS Week-1 Exceedance Prob. > 150mm
Valid: 20210412 - 20210418



Less probability of rainfall to exceed 150mm in most parts of the country during the forecast period.

GEFS Week-1 Exceedance Prob. > 200mm
Valid: 20210412 - 20210418



Less probability of rainfall to exceed 200mm in most parts of the country during the forecast period.



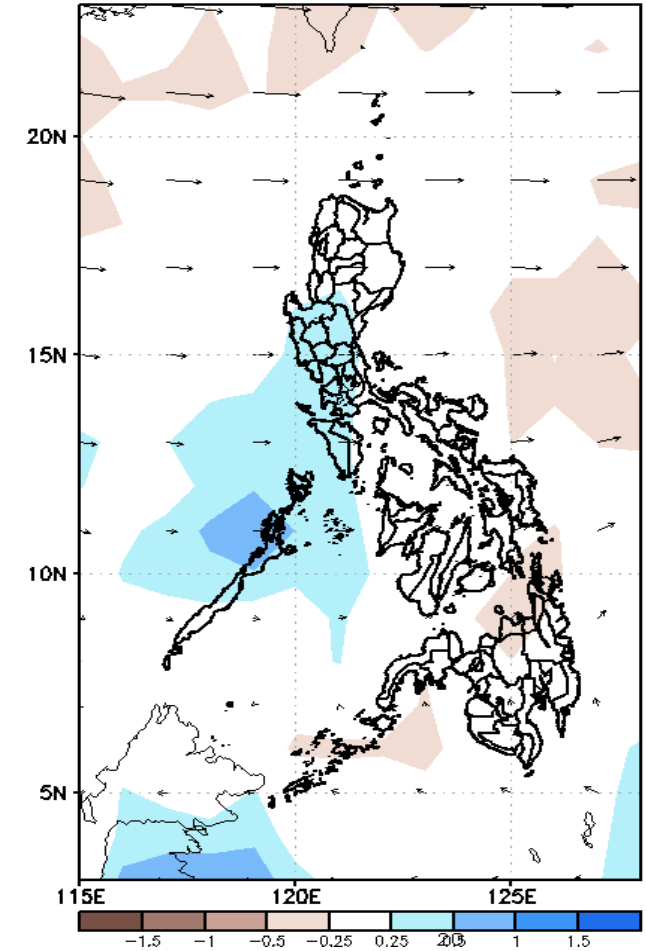
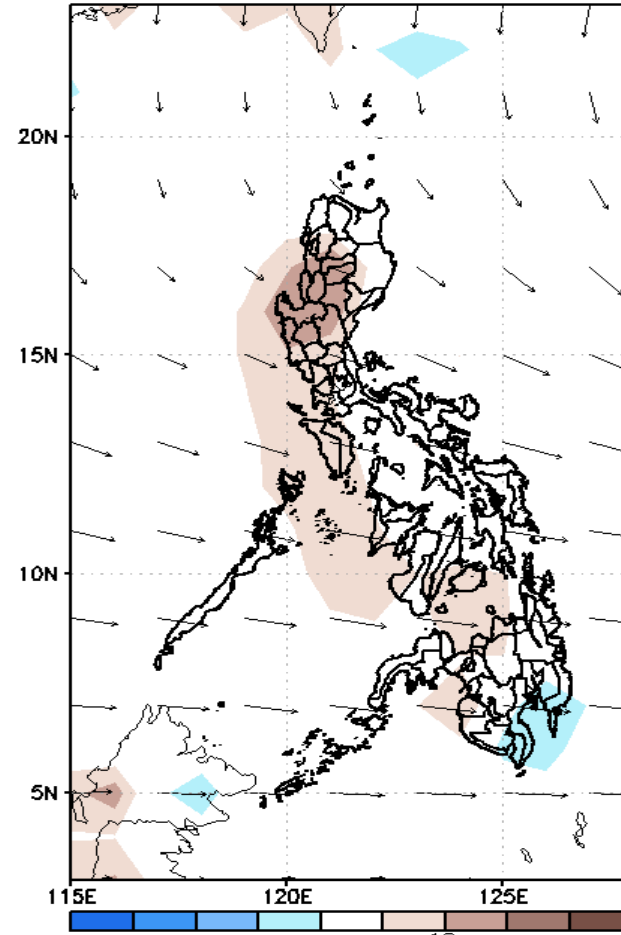
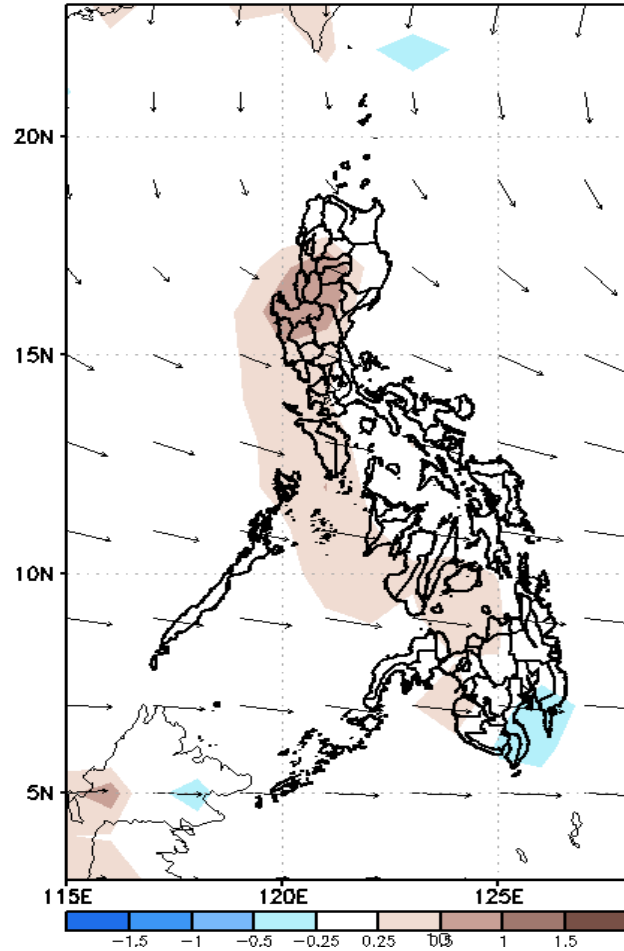
GEFS Week-2 Forecasts: Divergence & Wind Anomaly

Week 2: April 19-25, 2021

GEFS Week-2 850-hPa Divergence and Wind Anom
Valid: 20210419 - 20210425

GEFS Week-2 700-hPa Divergence and Wind Anom
Valid: 20210419 - 20210425

GEFS week-2 200-hPa Divergence and Wind Anom
Valid: 20210419 - 20210425

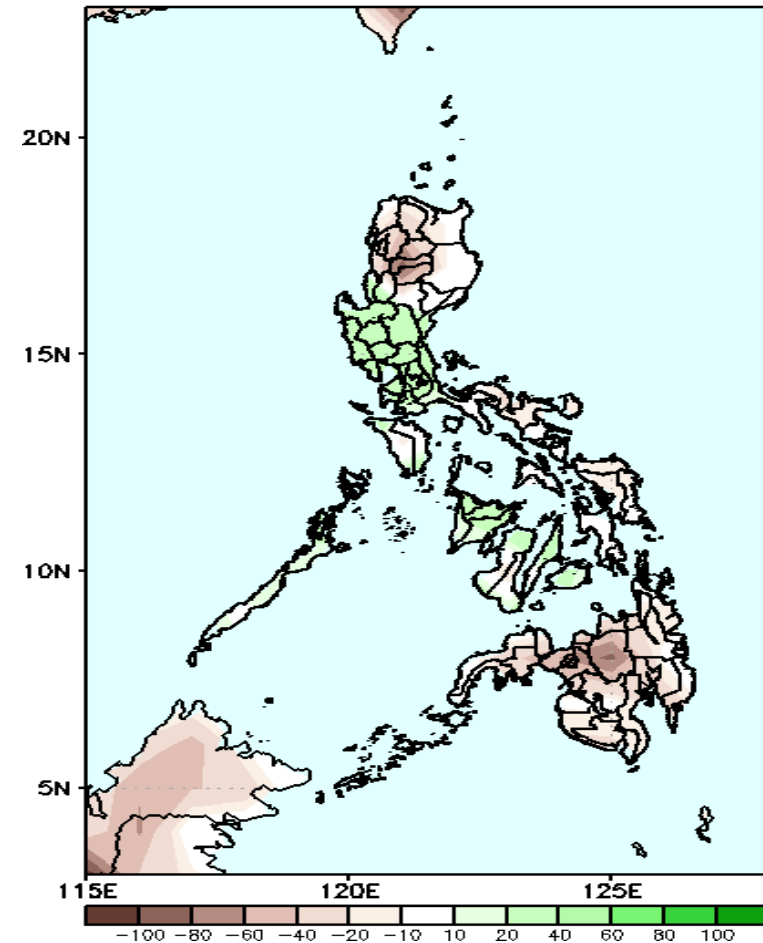


Upper and low level Divergence suggest high likelihood of precipitation in most parts of central Luzon, Cavite, Laguna, Batangas and MIMAROPA Easterlies affecting most parts of the country attributing to warmer temperatures during the forecast period.

Precipitation Anomaly and Exceedance Probability > 25/50 mm

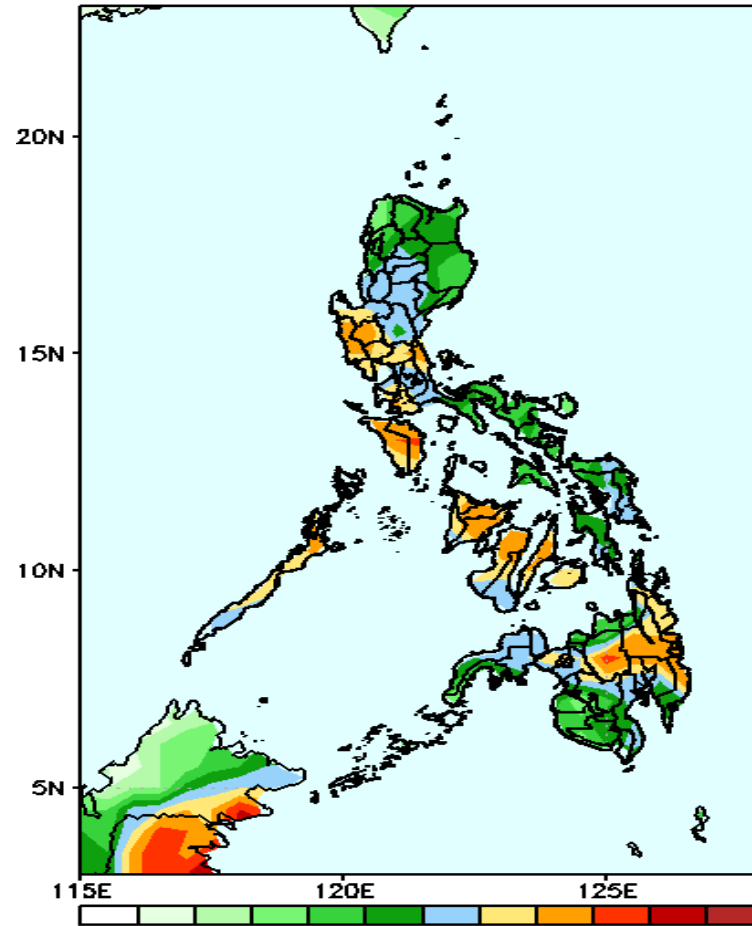
Week 2: April 19-25, 2021

GEFS Week-2 Precip Anomaly
Valid: 20210419 - 20210425



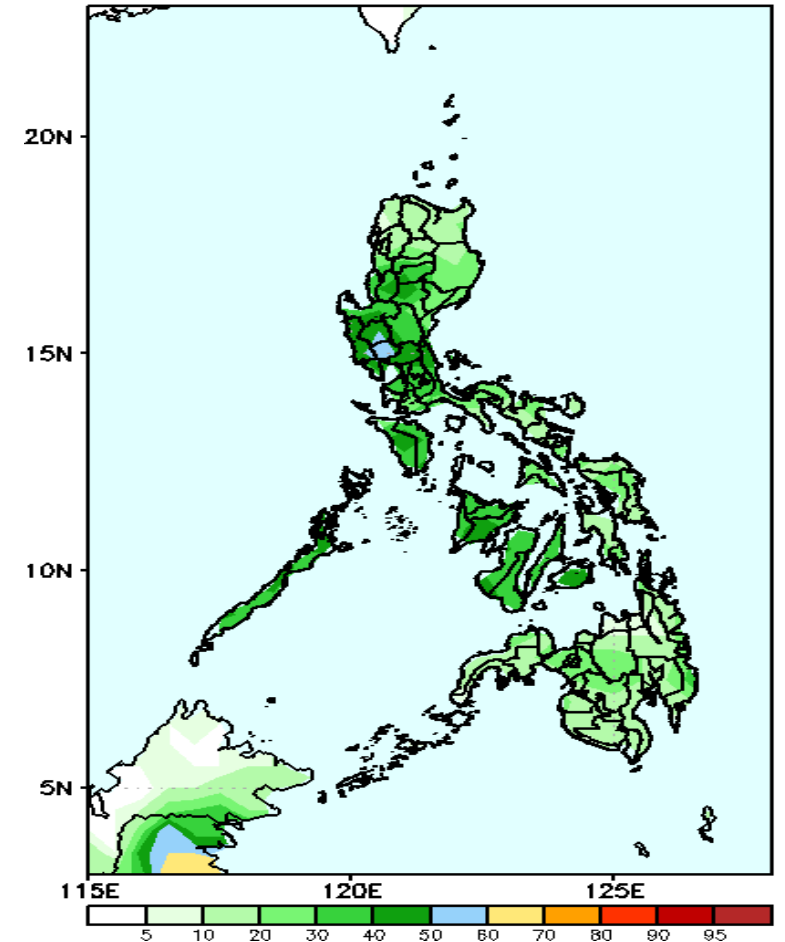
Rainfall deficit of up to 80mm is expected in northeastern Luzon, eastern Visayas & most parts of Mindanao while increase of rainfall of 20-60mm in southern Luzon and western Visayas during the forecast period.

GEFS Week-2 Exceedance Prob. > 25mm
Valid: 20210419 - 20210425



High probability of rainfall to exceed 25mm in Pangasinan, most parts of Central Luzon, part of CALABARZON, MIMAROPA, most part of Central and Western Visayas, CARAGA, Bukidnon and parts of Davao region while less likely for the remaining parts of the country during the forecast period.

GEFS Week-2 Exceedance Prob. > 50mm
Valid: 20210419 - 20210425



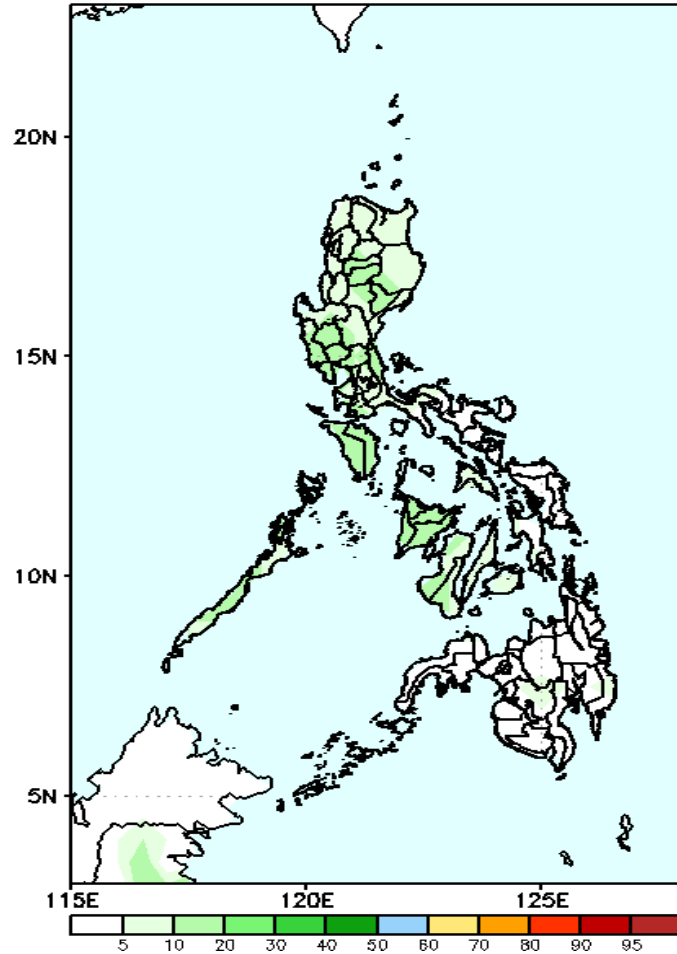
Less probability of rainfall to exceed 50mm in most parts of the country during the forecast period.



Exceedance Probability > 100/150/200 mm

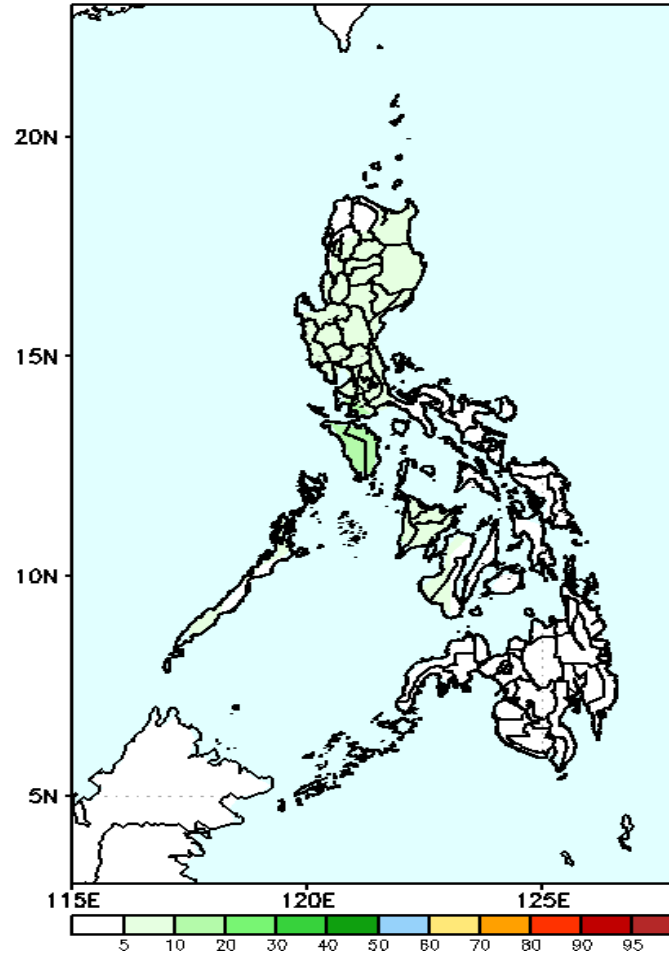
Week 2: April 19-25, 2021

GEFS Week-2 Exceedance Prob. > 100mm
Valid: 20210419 - 20210425



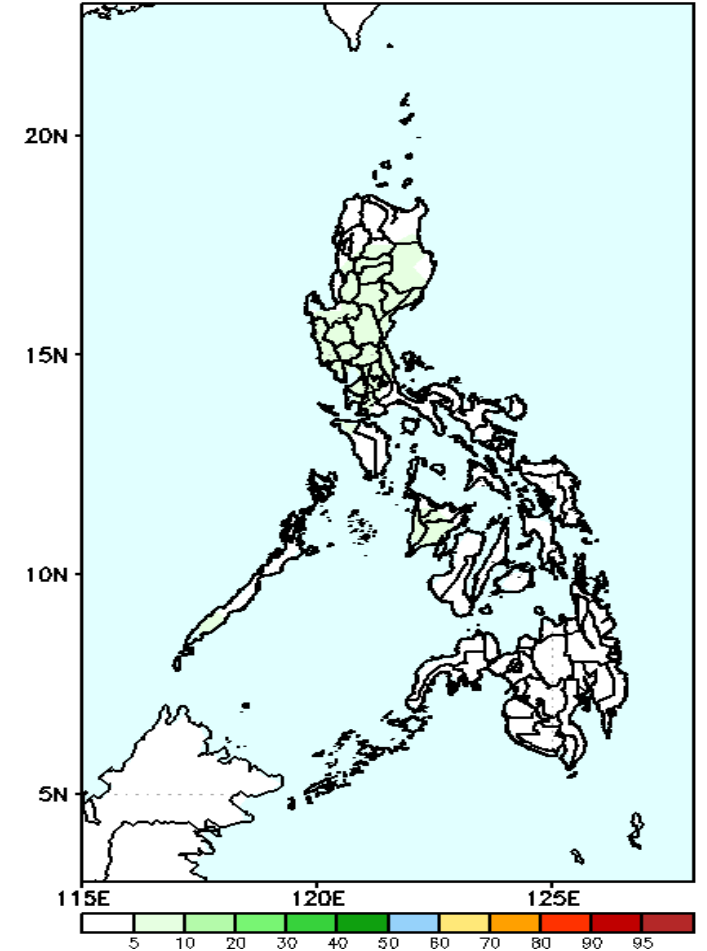
Less probability of rainfall to exceed 100mm in most parts of the country during the forecast period.

GEFS Week-2 Exceedance Prob. > 150mm
Valid: 20210419 - 20210425



Less probability of rainfall to exceed 150mm in most parts of the country during the forecast period.

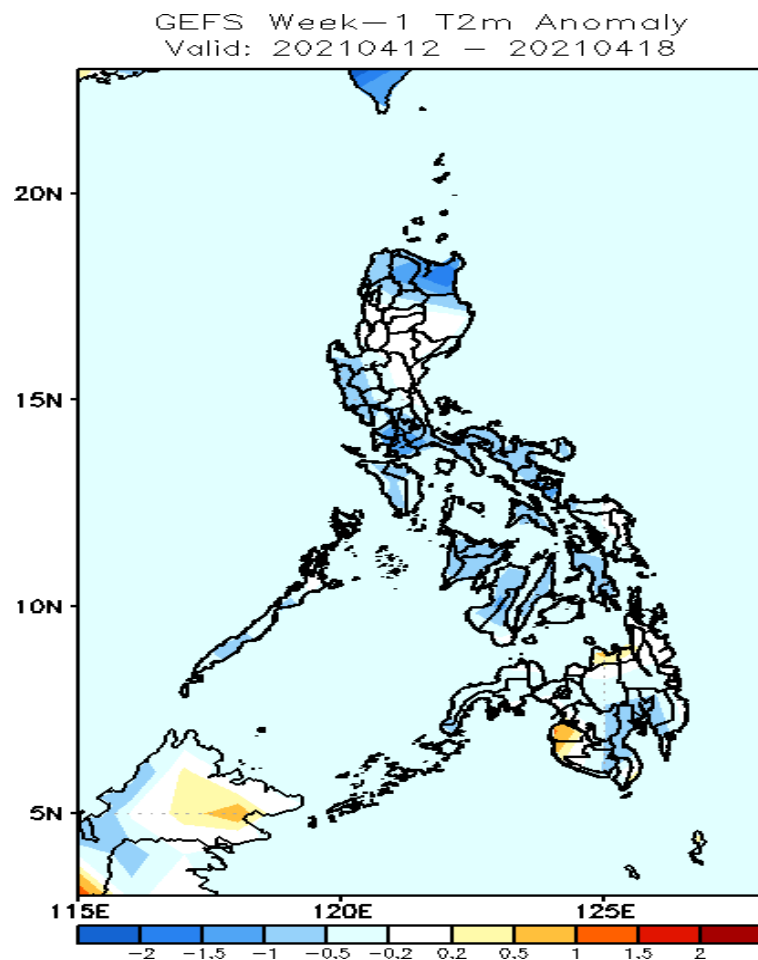
GEFS Week-2 Exceedance Prob. > 200mm
Valid: 20210419 - 20210425



Less probability of rainfall to exceed 200mm in most parts of the country during the forecast period.

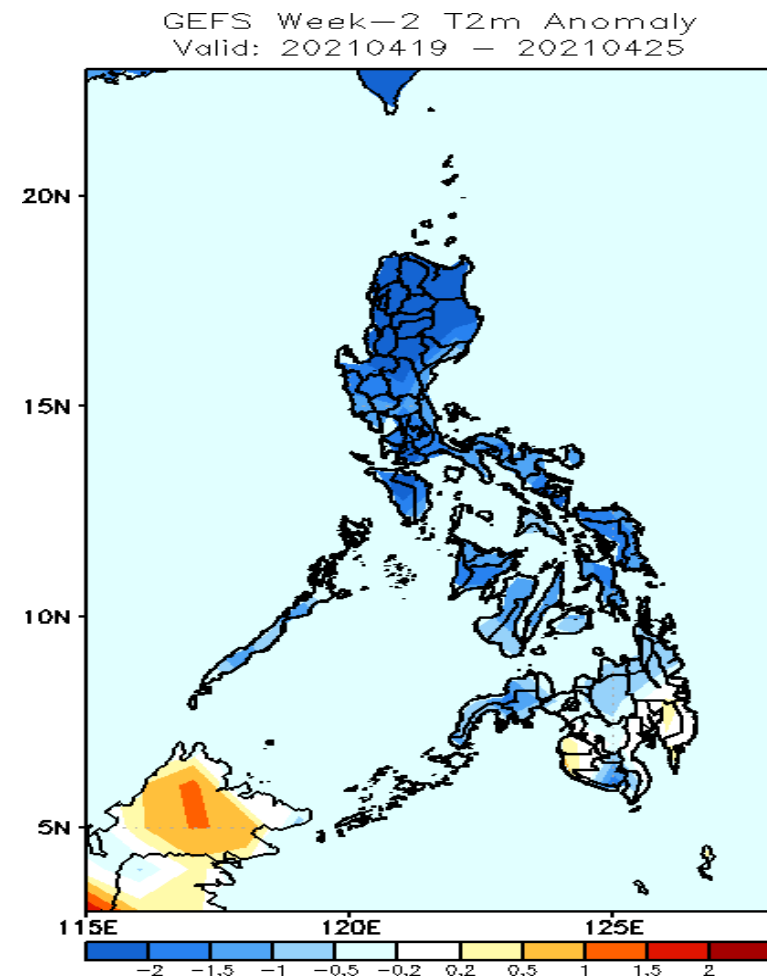


GEFS Week-1 & 2 Forecasts: T2m Anomaly



2m Temperature Week 1: April 12-18, 2021

Slightly cooler to cooler than average surface air temperature will likely experience in most parts of the country except with some patches of average temperature in central Luzon, Samar Provinces and northeastern parts of Mindanao during the forecast period.



2m Temperature Week 2: April 19-25, 2021

Cooler than average surface air temperature will likely experience in most parts of Luzon and Visayas while Mindanao will likely receive average to slightly cooler temperature.

