



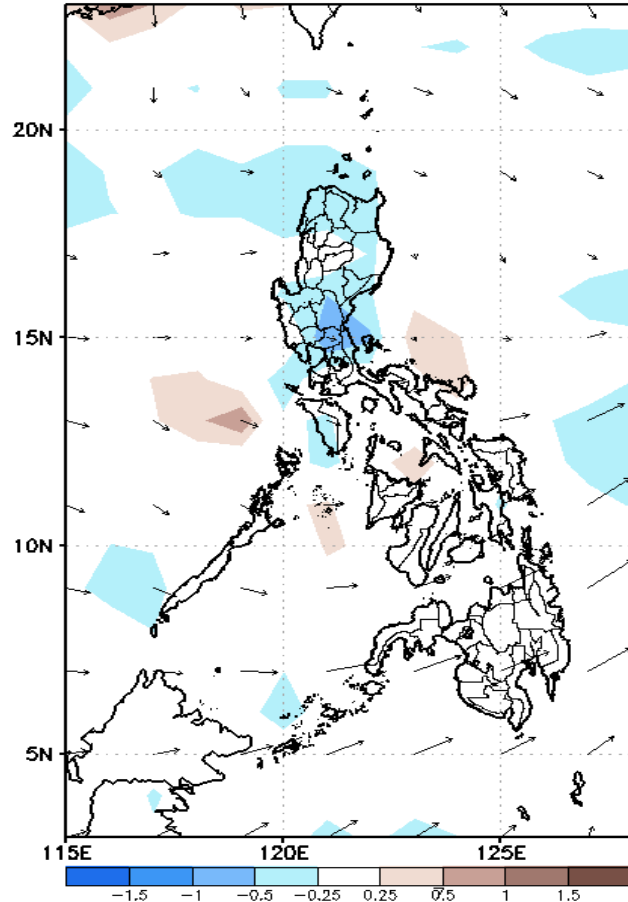
Week 1 & Week 2 Forecast for the Philippines using GEFS Model



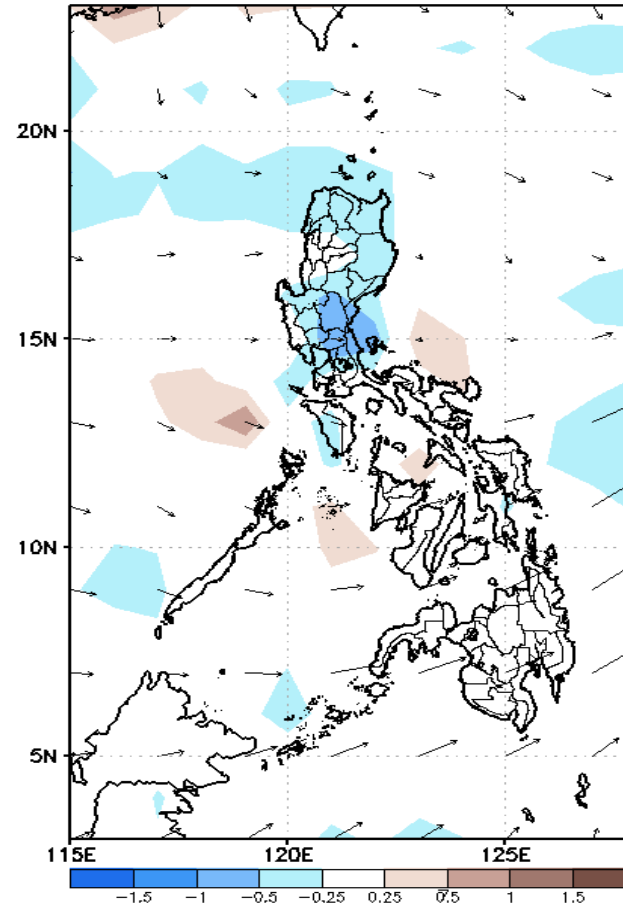
GEFS Week-1 Forecasts: Divergence & Wind Anomaly

Week 1: March 11-17, 2021

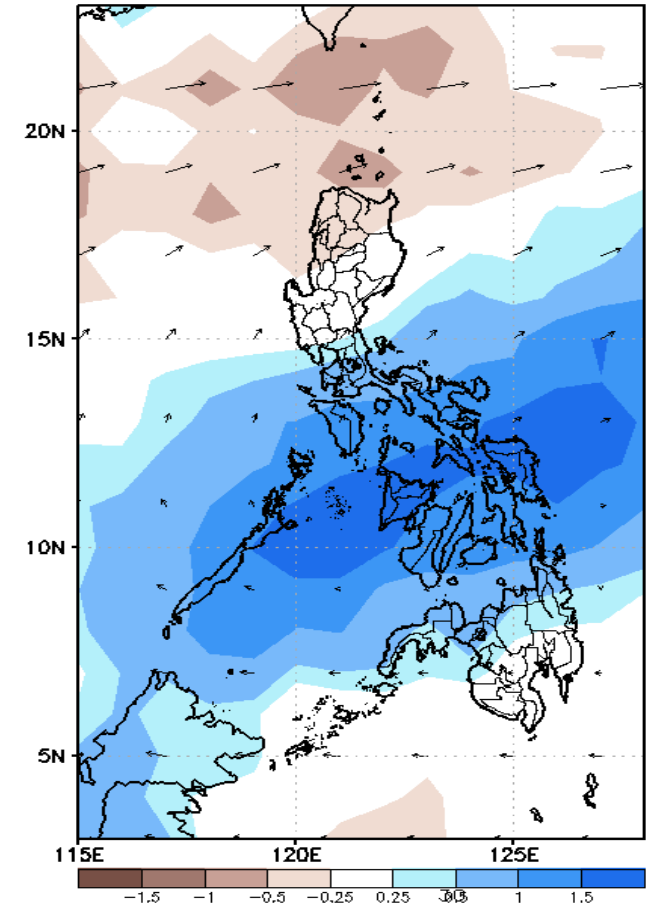
GEFS Week-1 850-hPa Divergence and Wind Anom
Valid: 20210311 - 20210317



GEFS Week-1 700-hPa Divergence and Wind Anom
Valid: 20210311 - 20210317



GEFS Week-1 200-hPa Divergence and Wind Anom
Valid: 20210311 - 20210317

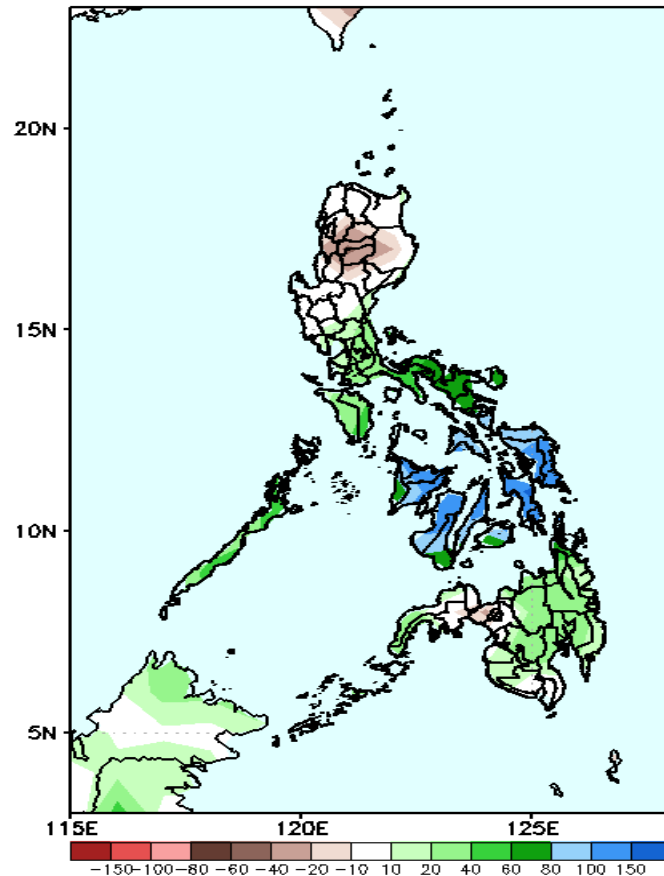


Upper and low level Divergence suggest likelihood of precipitation in most parts of the country. Northeast Monsoon affecting Luzon Easterlies affecting Visayas and Mindanao during the forecast period.

Precipitation Anomaly and Exceedance Probability > 25/50 mm

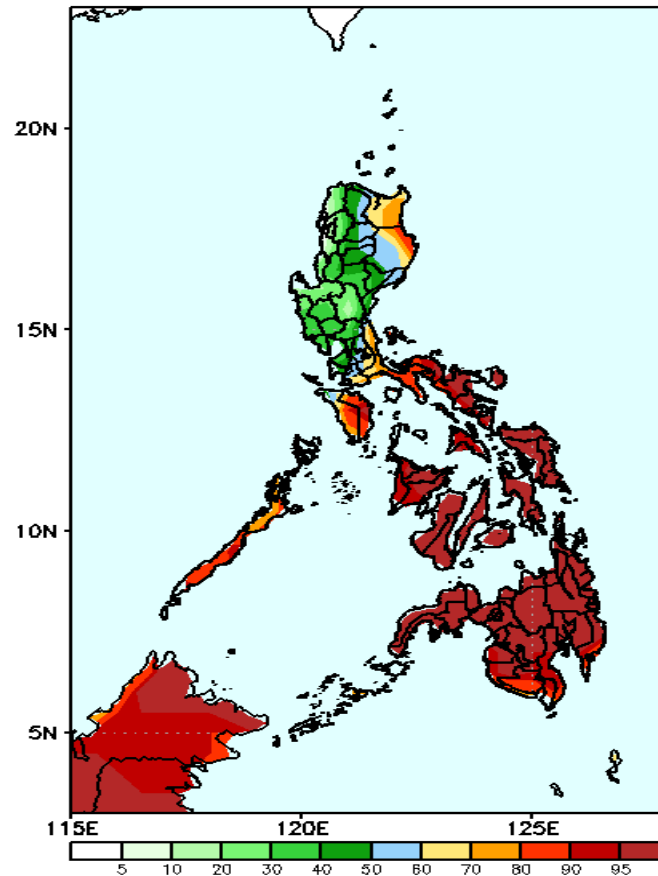
Week 1: March 11-17, 2021

GEFS Week-1 Precip Anomaly
Valid: 20210311 - 20210317



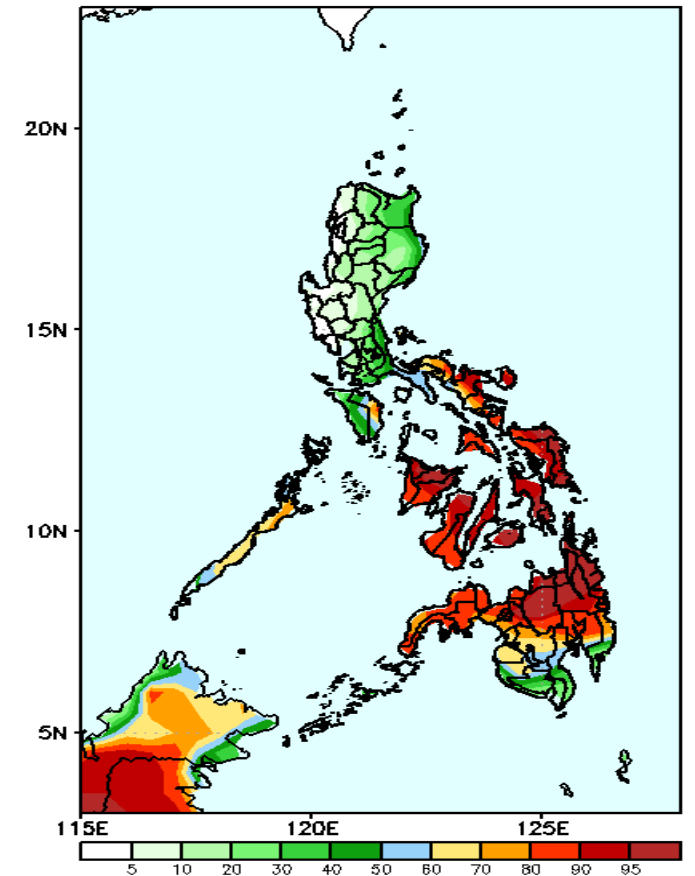
Increase of rainfall of up to 80mm is expected in most parts of Southern Luzon and most parts of Mindanao and up to 150mm increase in Visayas while rainfall deficit of up to 60mm in Cordillera Region.

GEFS Week-1 Exceedance Prob. > 25mm
Valid: 20210311 - 20210317



High probability of rainfall to exceed 25mm in most parts of Cagayan, Isabela, Southern Luzon and Visayas and Mindanao while less likely for the remaining parts of the country during the forecast period.

GEFS Week-1 Exceedance Prob. > 50mm
Valid: 20210311 - 20210317



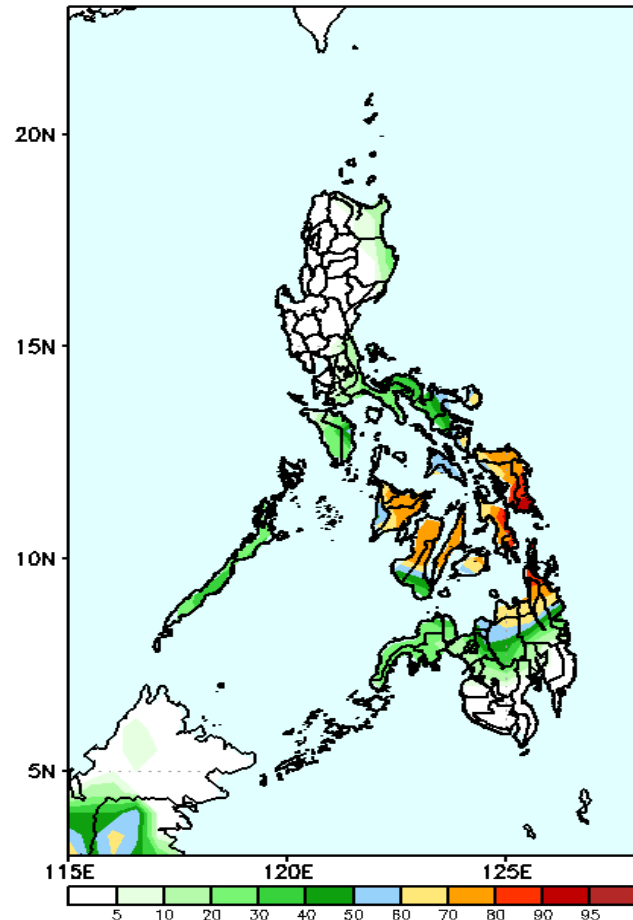
High probability of rainfall to exceed 50mm in most parts of Bicol region, Visayas and Mindanao while less likely for the remaining parts of the country during the forecast period



Exceedance Probability > 100/150/200 mm

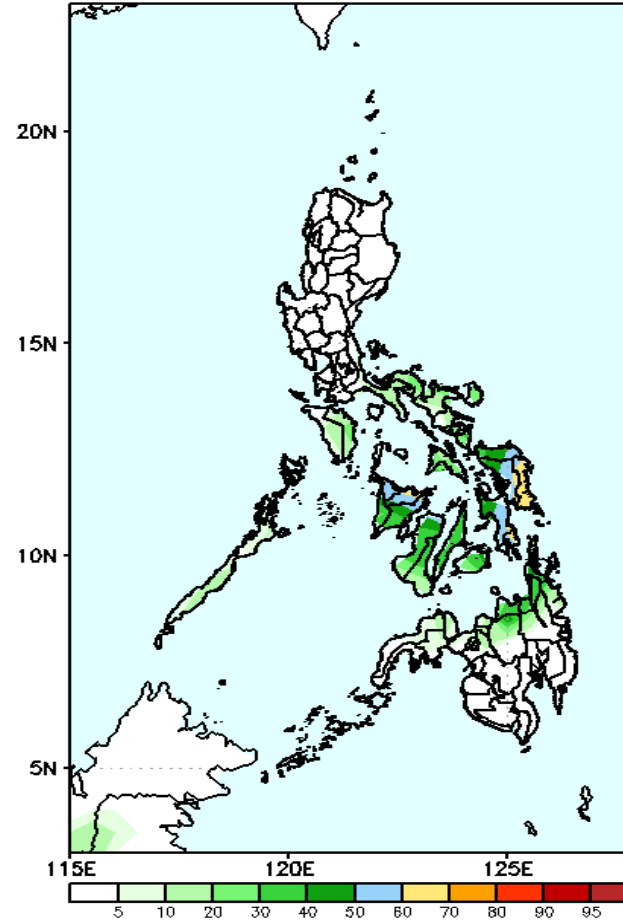
Week 1: March 11-17, 2021

GEFS Week-1 Exceedance Prob. > 100mm
Valid: 20210311 – 20210317



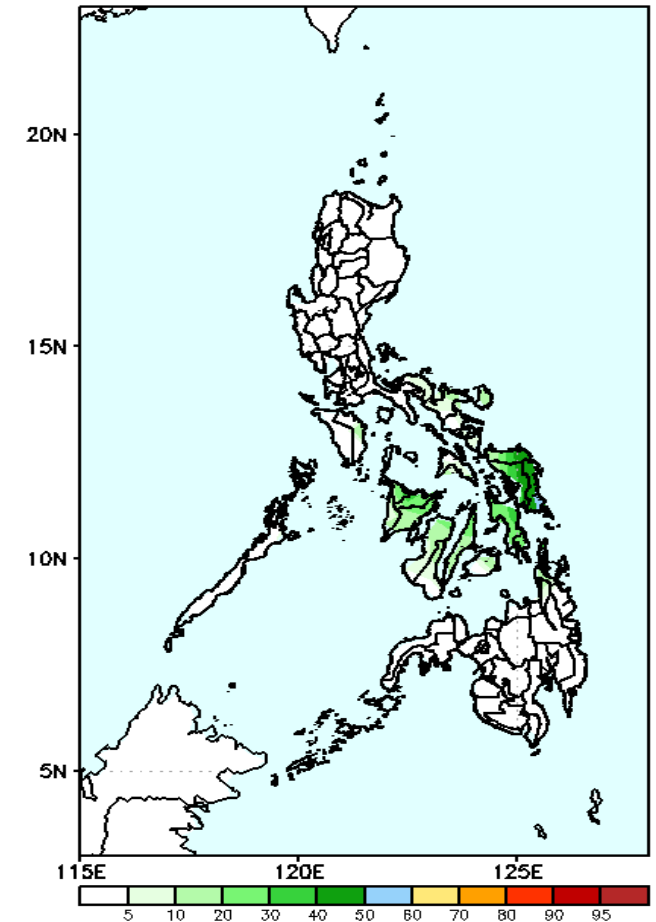
High probability of rainfall to exceed 100mm in most parts of Visayas and CARAGA Region while less likely for the remaining parts of the country during the forecast period

GEFS Week-1 Exceedance Prob. > 150mm
Valid: 20210311 – 20210317



Less probability of rainfall to exceed 150mm in most parts of the country during the forecast period.

GEFS Week-1 Exceedance Prob. > 200mm
Valid: 20210311 – 20210317



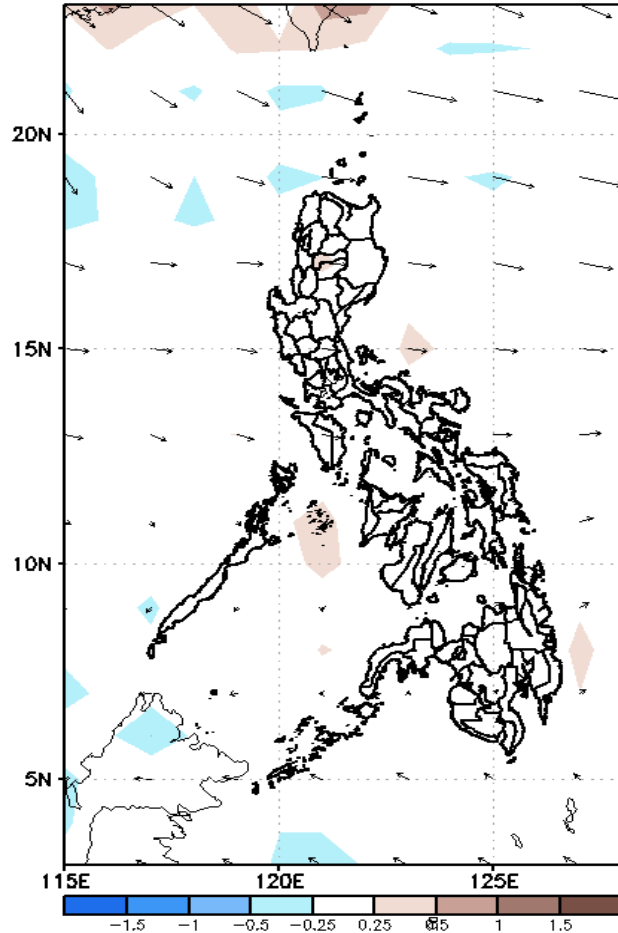
Less probability of rainfall to exceed 200mm in most parts of the country during the forecast period.



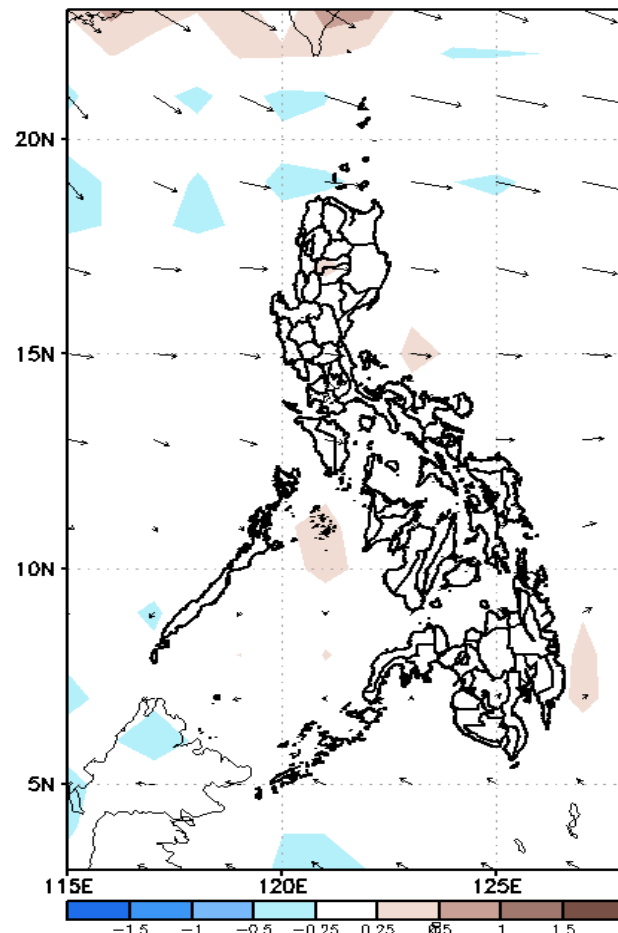
GEFS Week-2 Forecasts: Divergence & Wind Anomaly

Week 2: March 18-24, 2021

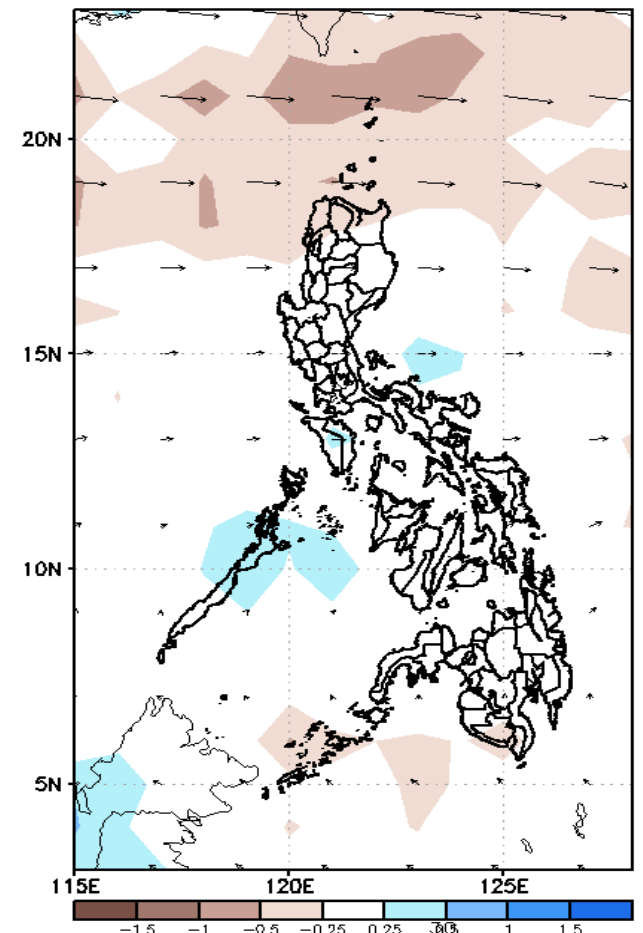
GEFS Week-2 850-hPa Divergence and Wind Anom
Valid: 20210318 - 20210324



GEFS Week-2 700-hPa Divergence and Wind Anom
Valid: 20210318 - 20210324



GEFS week-2 200-hPa Divergence and Wind Anom
Valid: 20210318 - 20210324

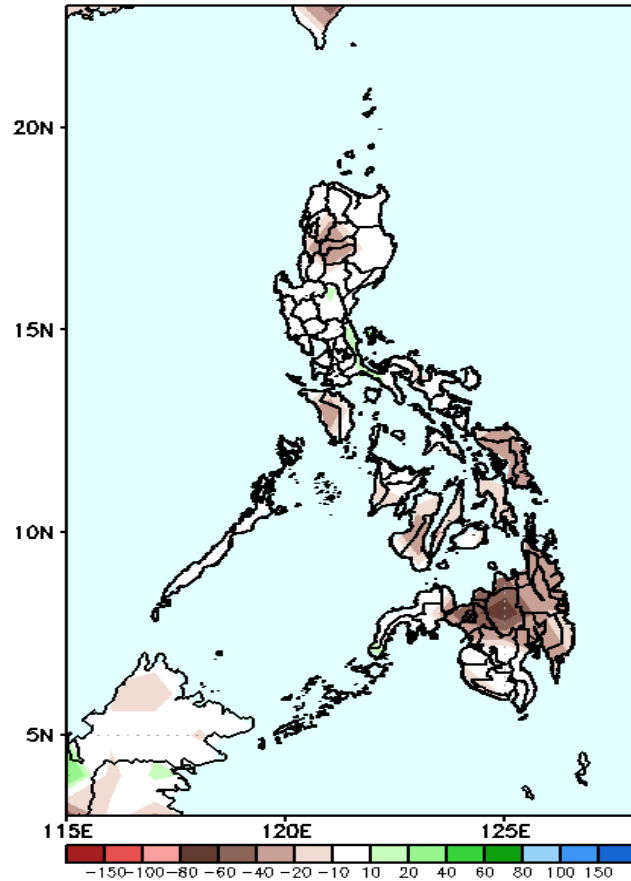


Upper and low level Divergence suggest less likelihood of precipitation in most parts of the country. Easterlies affecting most parts of the country during the forecast period.

Precipitation Anomaly and Exceedance Probability > 25/50 mm

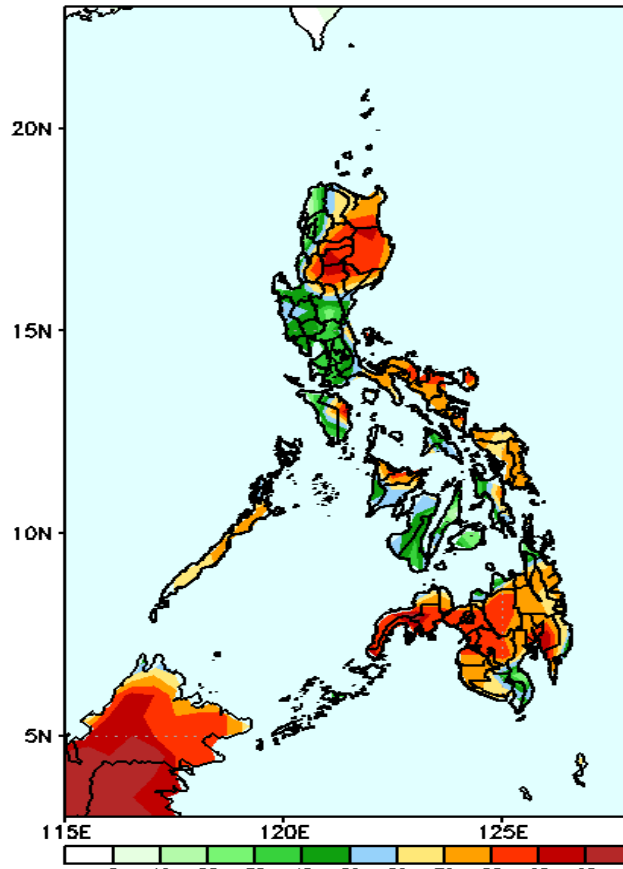
Week 2: March 18-24, 2021

GEFS Week-2 Precip Anomaly
Valid: 20210318 - 20210324



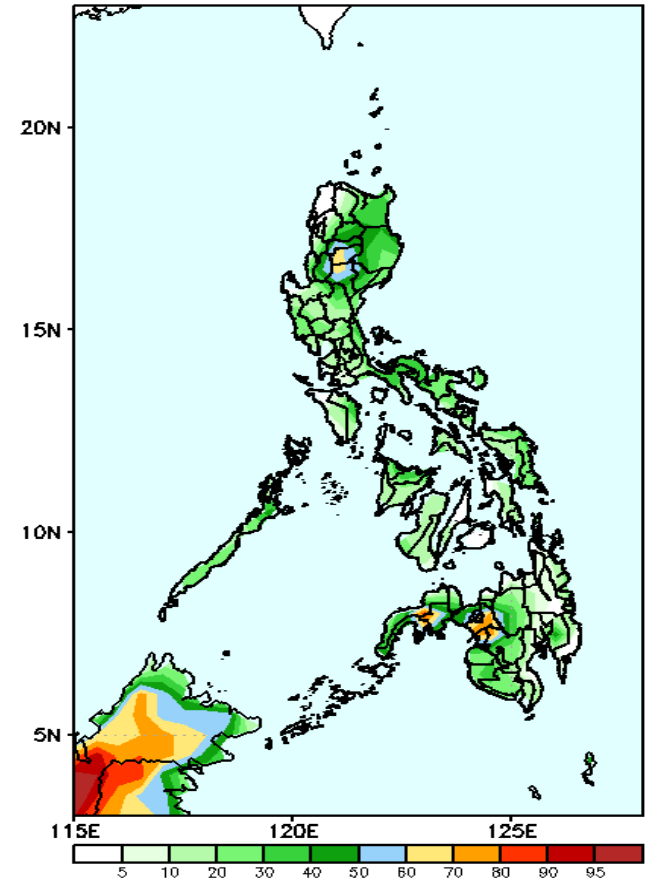
Rainfall deficit of 40-80mm is expected in most parts of Cordillera Region, in Visayas and Mindanao.

GEFS Week-2 Exceedance Prob. > 25mm
Valid: 20210318 - 20210324



High probability of rainfall to exceed 25mm in most parts of Cagayan Valley, Cordillera Region, Bicol Region, Oriental Mindoro, in Samar Provinces, Aklan, Capiz and in most parts of Mindanao while less likely for the rest of the country during the forecast period.

GEFS Week-2 Exceedance Prob. > 50mm
Valid: 20210318 - 20210324



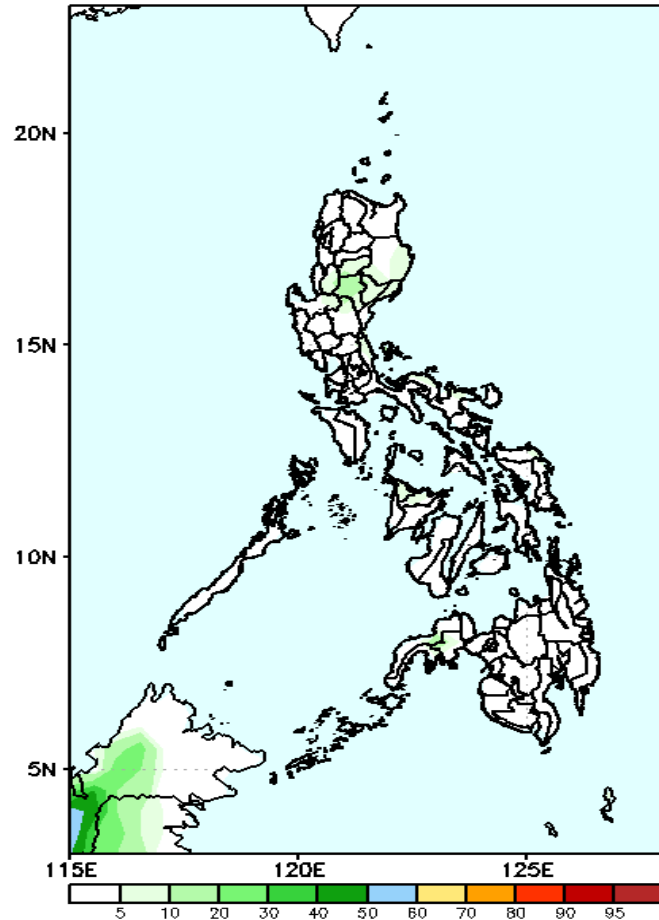
Less probability of rainfall to exceed 50mm in most parts of the country except in Lanao del Sur and parts of Zamboanga Sibugay where there is high probability during the forecast period.



Exceedance Probability > 100/150/200 mm

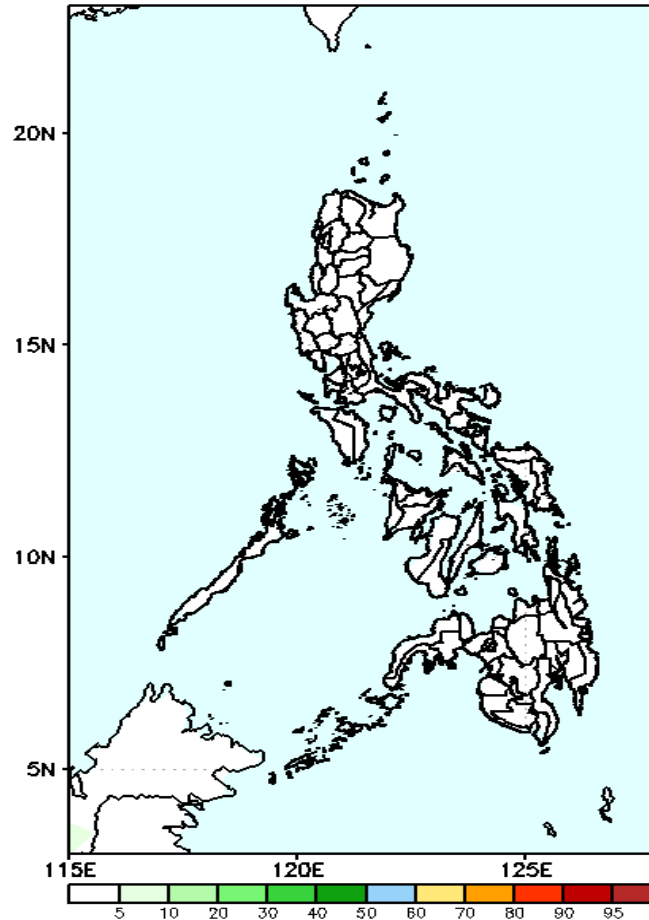
Week 2: March 18-24, 2021

GEFS Week-2 Exceedance Prob. > 100mm
Valid: 20210318 - 20210324



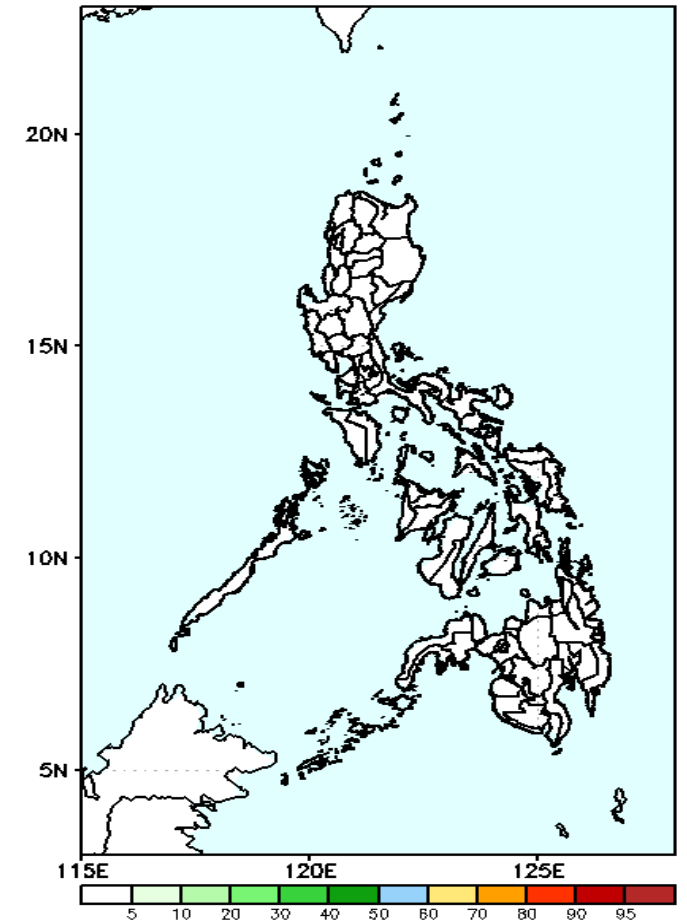
Less probability of rainfall to exceed 100mm in most parts of the country during the forecast period.

GEFS Week-2 Exceedance Prob. > 150mm
Valid: 20210318 - 20210324



Less probability of rainfall to exceed 150mm in most parts of the country during the forecast period.

GEFS Week-2 Exceedance Prob. > 200mm
Valid: 20210318 - 20210324

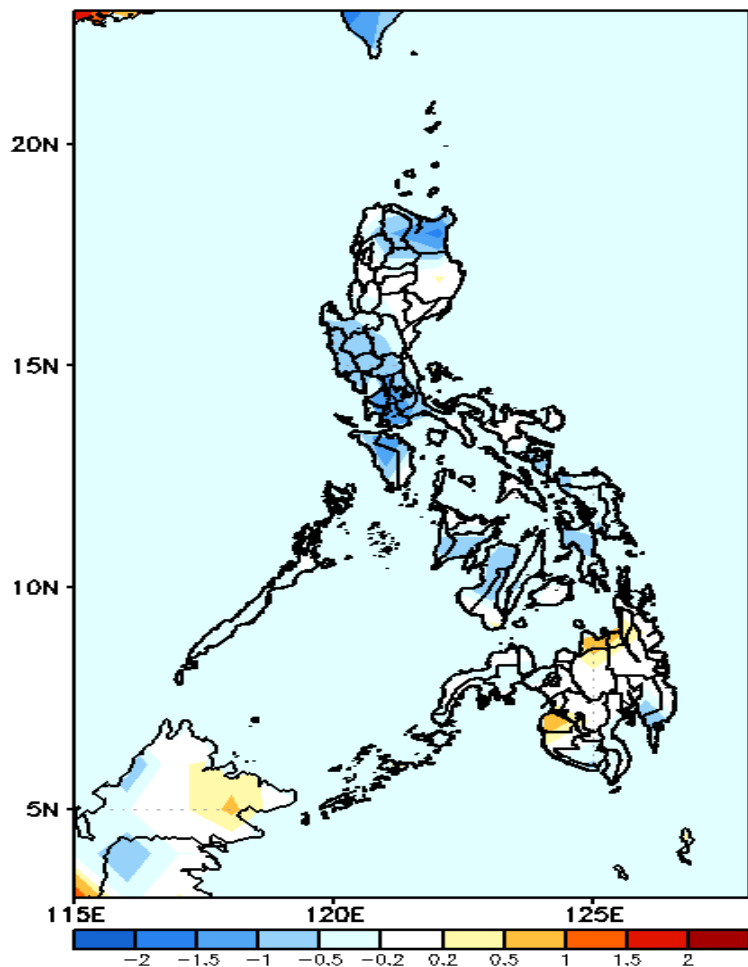


Less probability of rainfall to exceed 200mm in most parts of the country during the forecast period.



GEFS Week-1 & 2 Forecasts: T2m Anomaly

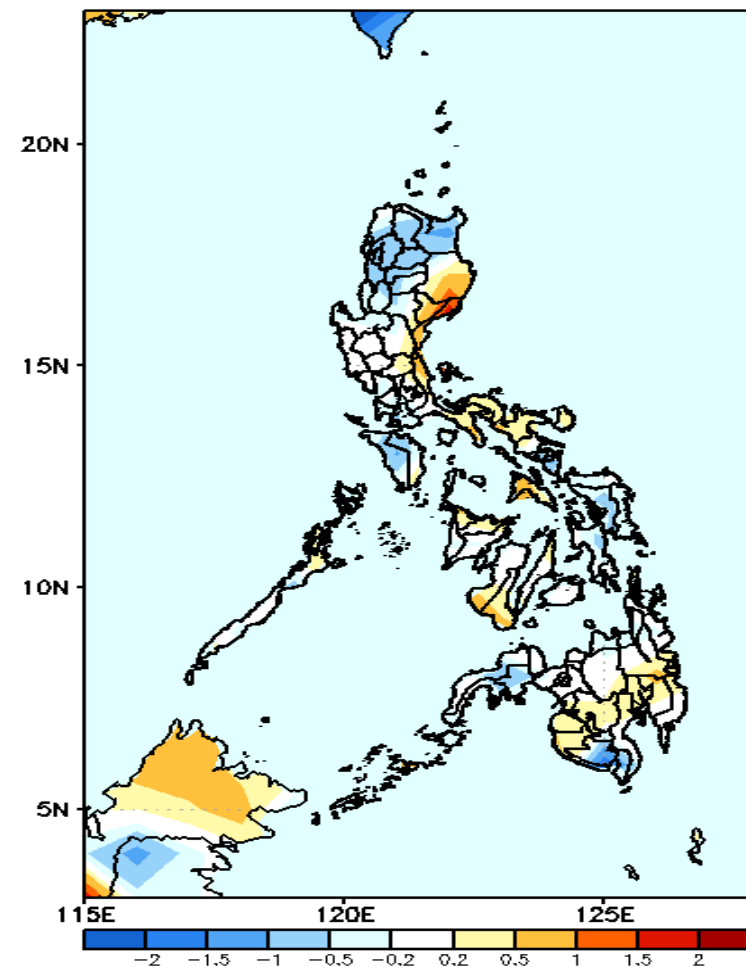
GEFS Week-1 T2m Anomaly
Valid: 20210311 – 20210317



2m Temperature Week 1: March 11-17, 2021

Average to slightly cooler than average surface air temperature is expected in most parts of the country during the forecast period.

GEFS Week-2 T2m Anomaly
Valid: 20210318 – 20210324



2m Temperature Week 2: March 18-24, 2021

Average to slightly cooler than average surface air temperature is expected in most parts of the country except in Isabela, Quirino, Baler, Rizal and Bicol Region where slightly warmer temperature is more likely during the forecast period.