



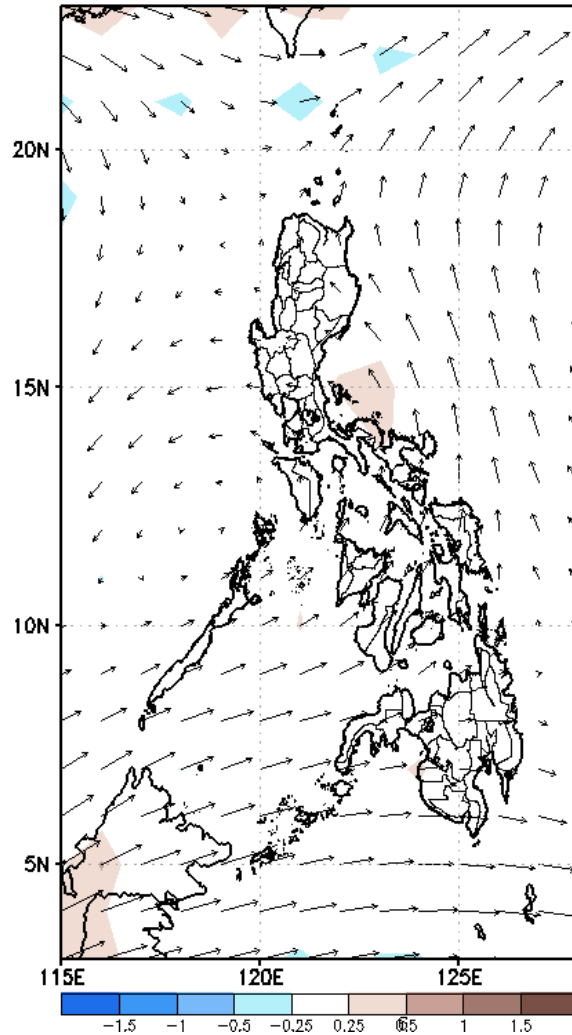
Week 1 & Week 2 Forecast for the Philippines using GEFS Model



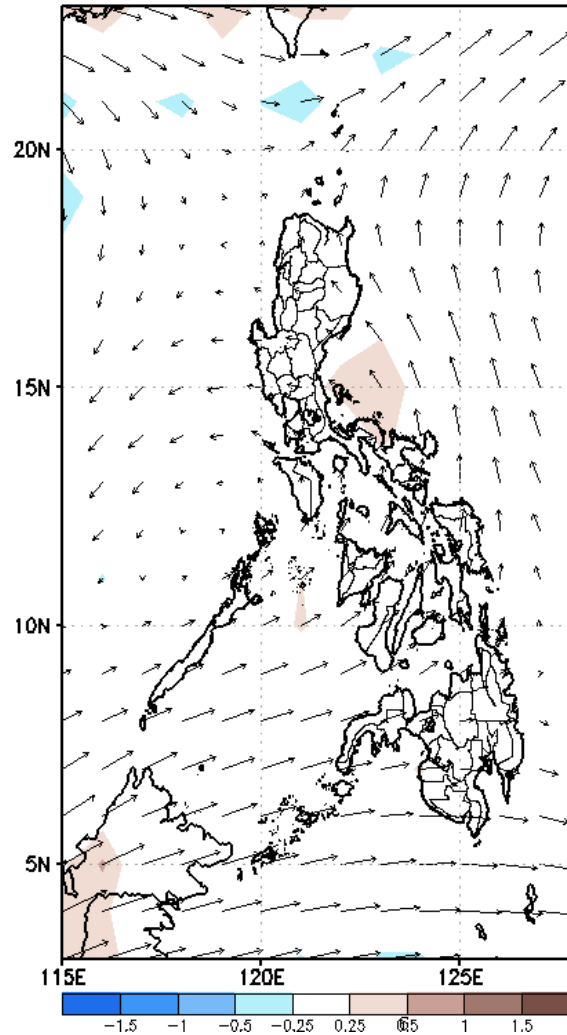
GEFS Week-1 Forecasts: Wind Anomaly Forecast

Week 1: Apr 12-18, 2023

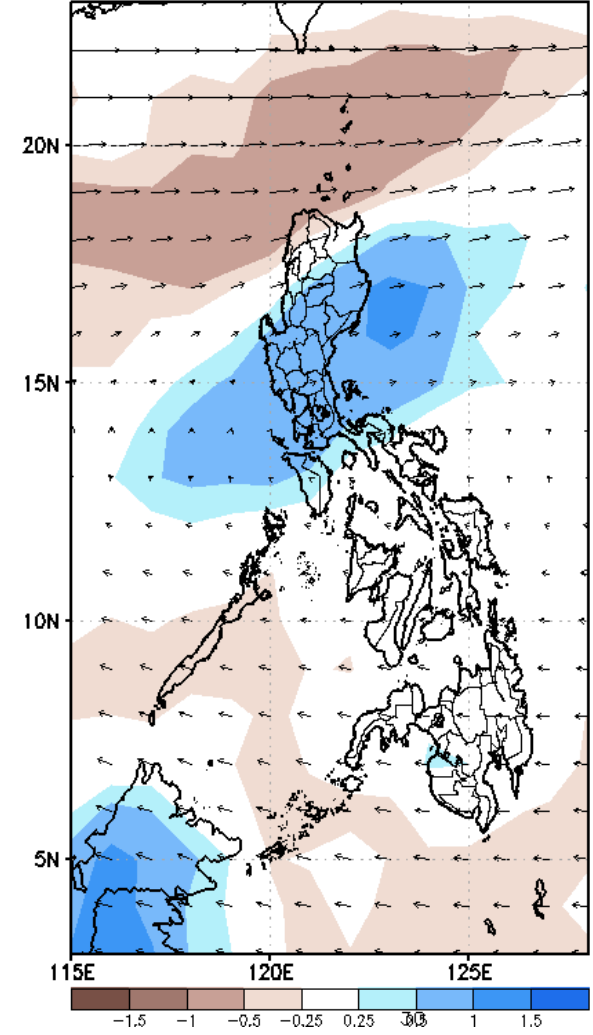
GEFS Week-1 850-hPa Divergence and Wind Anomaly
Valid: 20230412 - 20230418



GEFS Week-1 700-hPa Divergence and Wind Anomaly
Valid: 20230412 - 20230418



GEFS Week-1 200-hPa Divergence and Wind Anomaly
Valid: 20230412 - 20230418



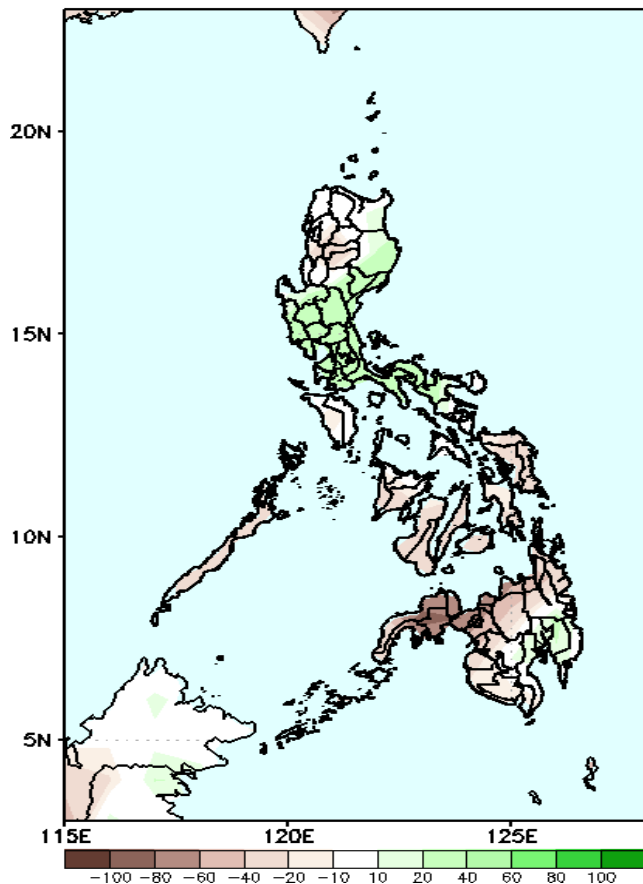
Easterlies is forecasted to affect most parts of the country; expect dry and hot weather during the forecast period.

Precipitation Anomaly and Exceedance Probability > 25/50 mm

- Very high probability
- High Probability
- Moderate Probability
- Low Probability

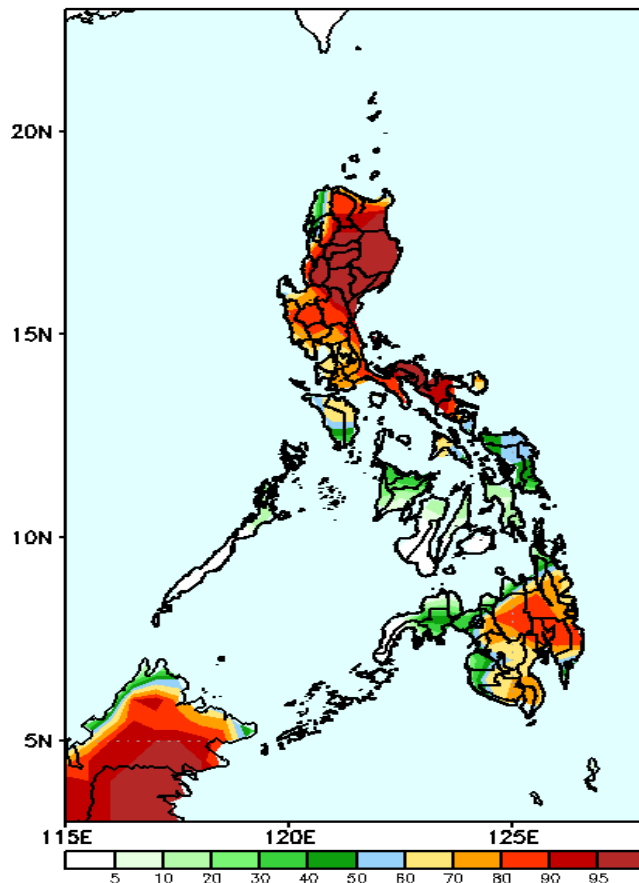
Week 1: Apr 12-18, 2023

GEFS Week-1 Precip Anomaly
Valid: 20230412 - 20230418



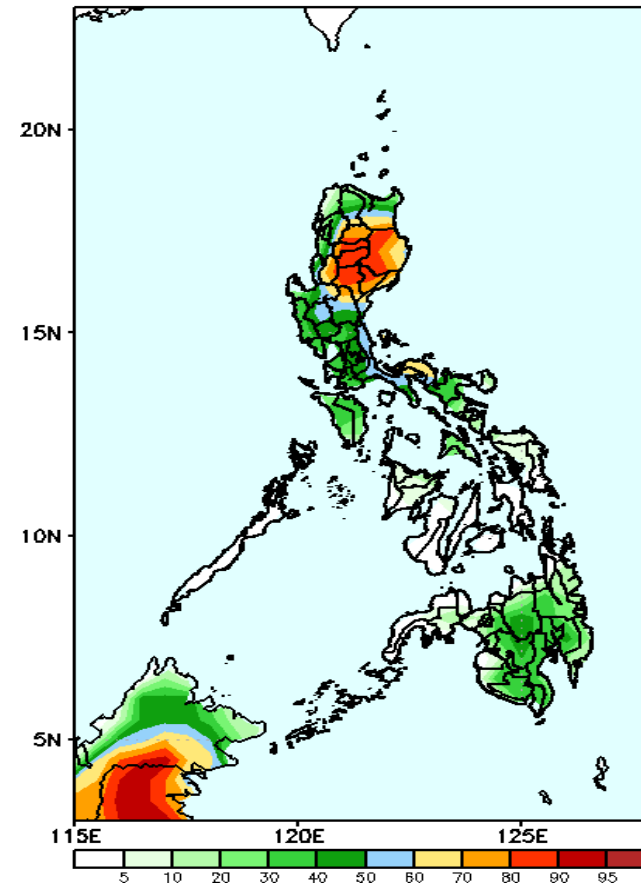
40 – 60mm increase of rainfall is expected in Cagayan Valley region, Pangasinan and most parts of Central and Southern Luzon except MIMAROPA while 40-100mm deficit of rainfall in most parts of Visayas and Mindanao during the forecast period.

GEFS Week-1 Exceedance Prob. > 25mm
Valid: 20230412 - 20230418



High to very high probability of rainfall to exceed 25mm in most parts of Luzon; moderate to high probability in Mindoro provinces, most portions of Mindanao except Zamboanga peninsula, Misamis Oriental and some portions of Samar provinces while low chance over the rest of the country.

GEFS Week-1 Exceedance Prob. > 50mm
Valid: 20230412 - 20230418



Moderate to high probability of rainfall to exceed 50mm in most parts of CAR, Cagayan Valley, Quezon and Camarines Norte while low chance over the rest of the country.

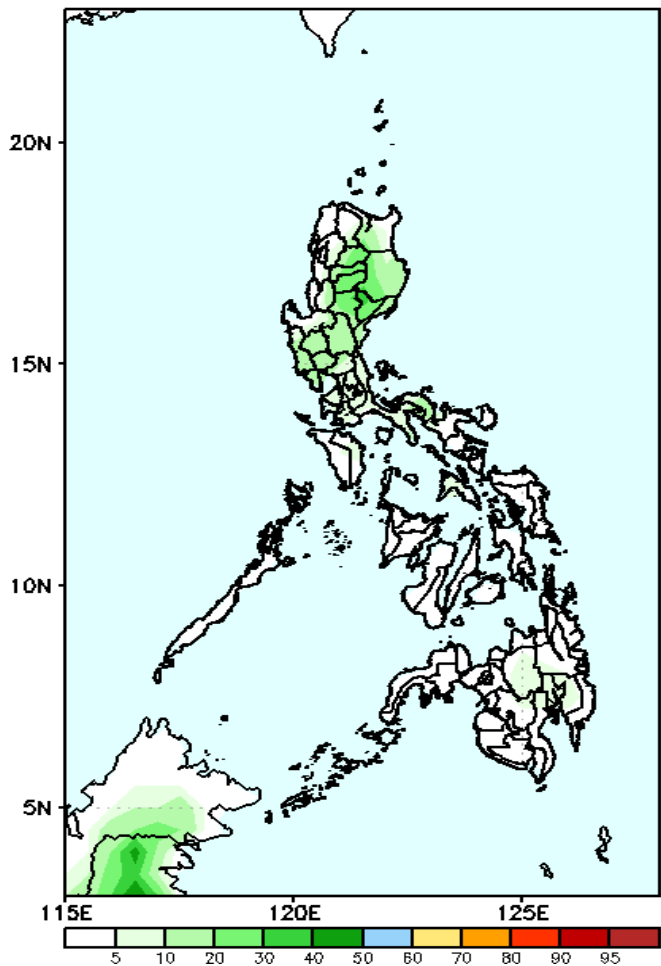


Exceedance Probability > 100/150/200 mm

- Very high probability
- High Probability
- Moderate Probability
- Low Probability

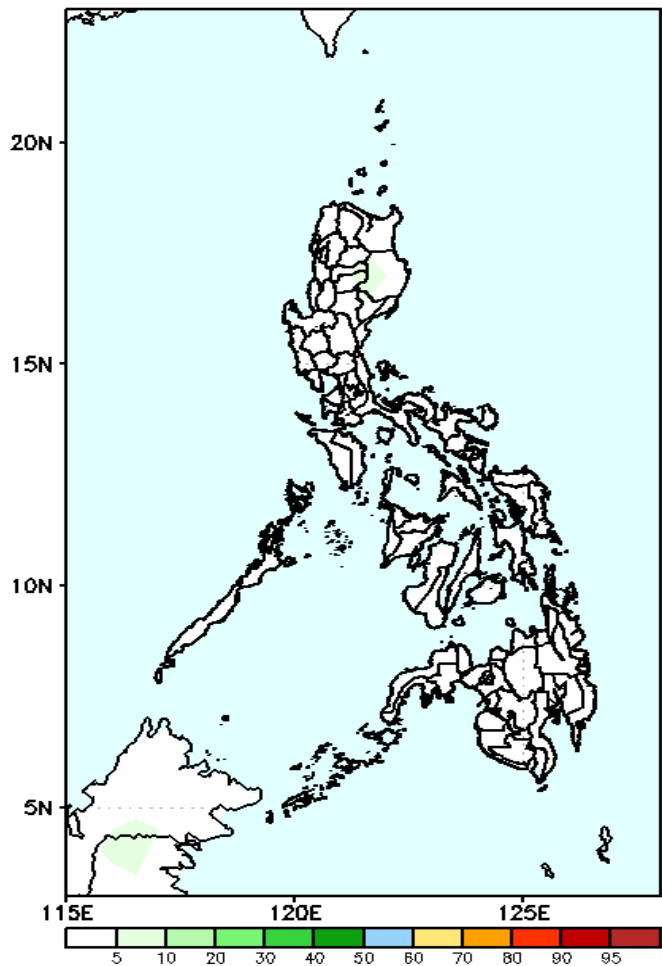
Week 1: Apr 12-18, 2023

GEFS Week-1 Exceedance Prob. > 100mm
Valid: 20230412 - 20230418



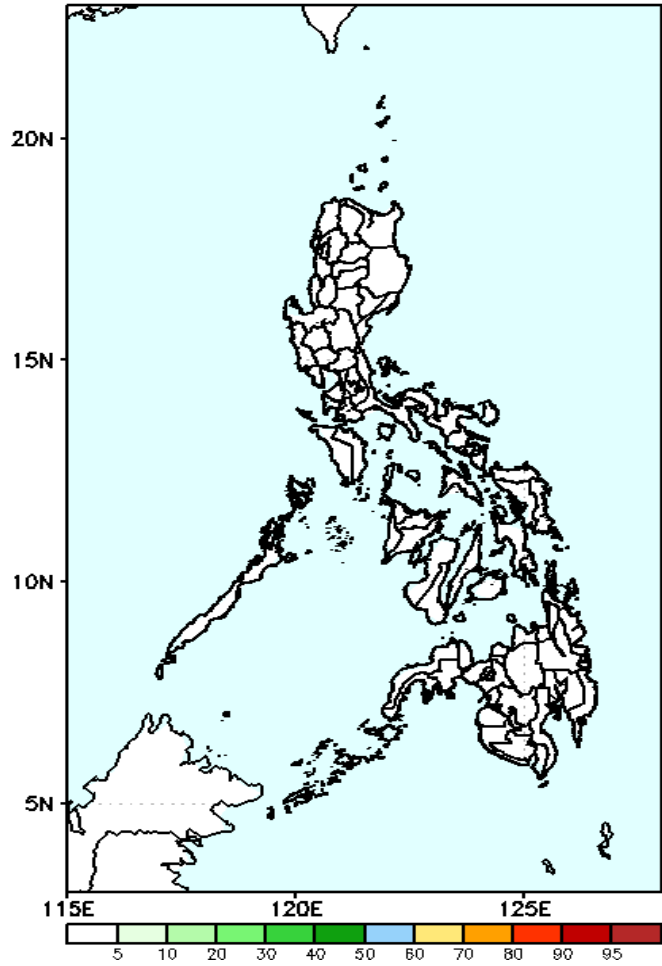
Low probability of rainfall to exceed 100mm in most parts of the country during the forecast period.

GEFS Week-1 Exceedance Prob. > 150mm
Valid: 20230412 - 20230418



Low probability of rainfall to exceed 150mm in most parts of the country during the forecast period.

GEFS Week-1 Exceedance Prob. > 200mm
Valid: 20230412 - 20230418

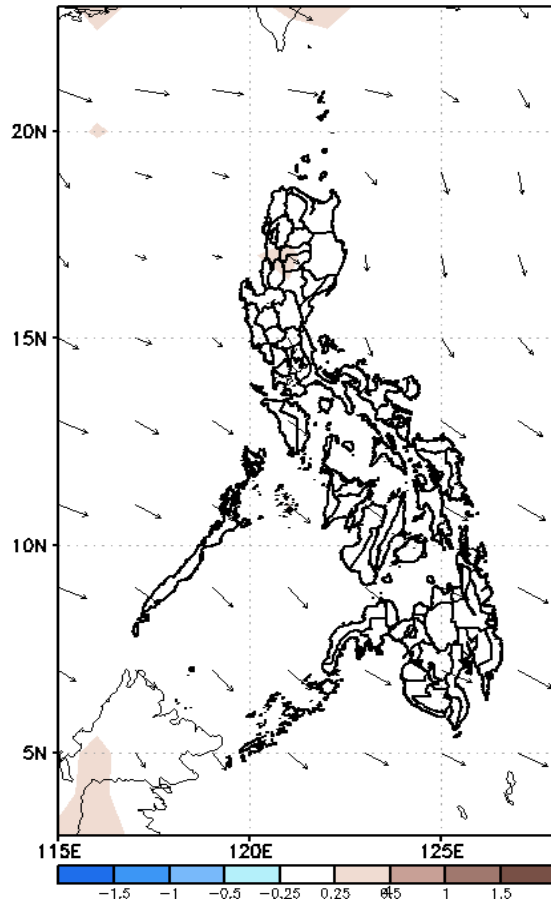


Low probability of rainfall to exceed 200mm in most parts of the country during the forecast period.

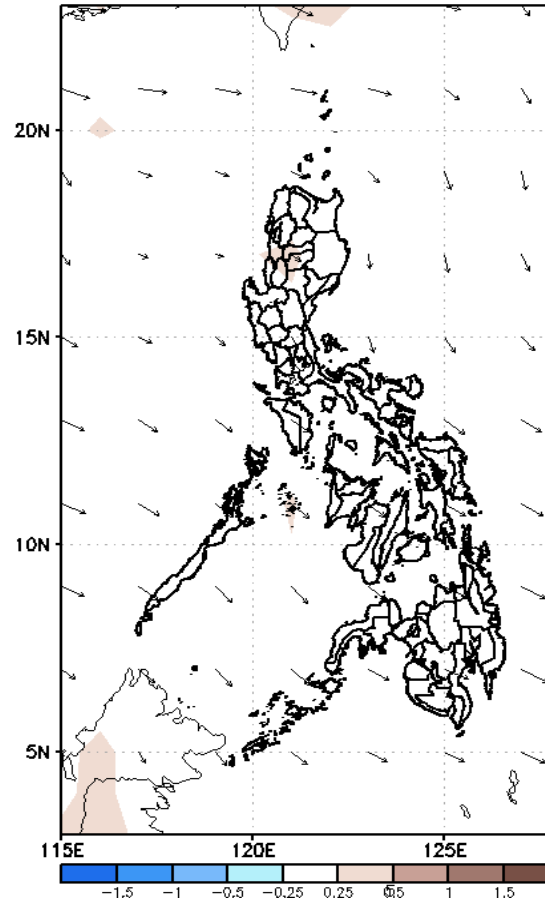
GEFS Week-2 Forecasts: Wind Anomaly Forecast

Week 2: Apr 19-25, 2023

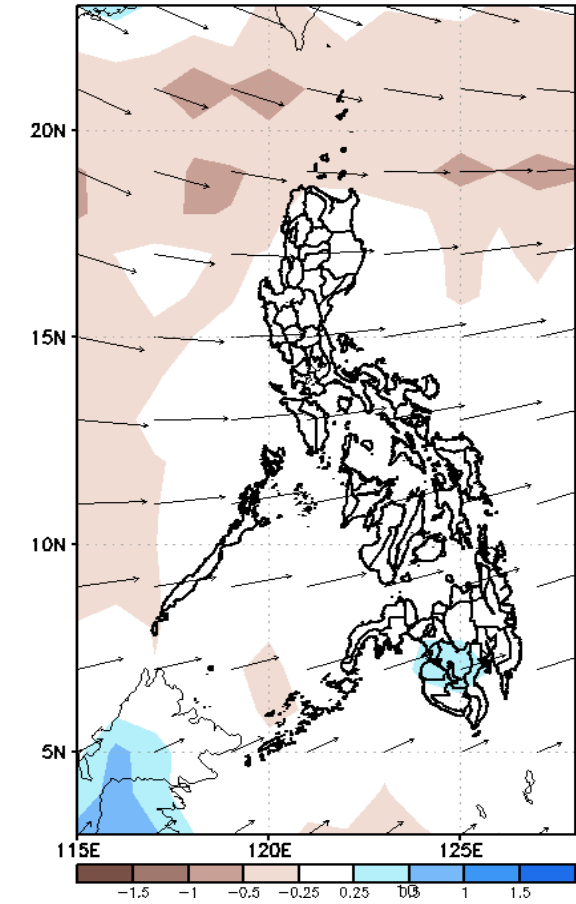
GEFS Week-2 850-hPa Divergence and Wind Anomaly
Valid: 20230419 - 20230425



GEFS Week-2 700-hPa Divergence and Wind Anomaly
Valid: 20230419 - 20230425

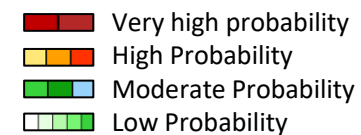


GEFS week-2 200-hPa Divergence and Wind Anomaly
Valid: 20230419 - 20230425



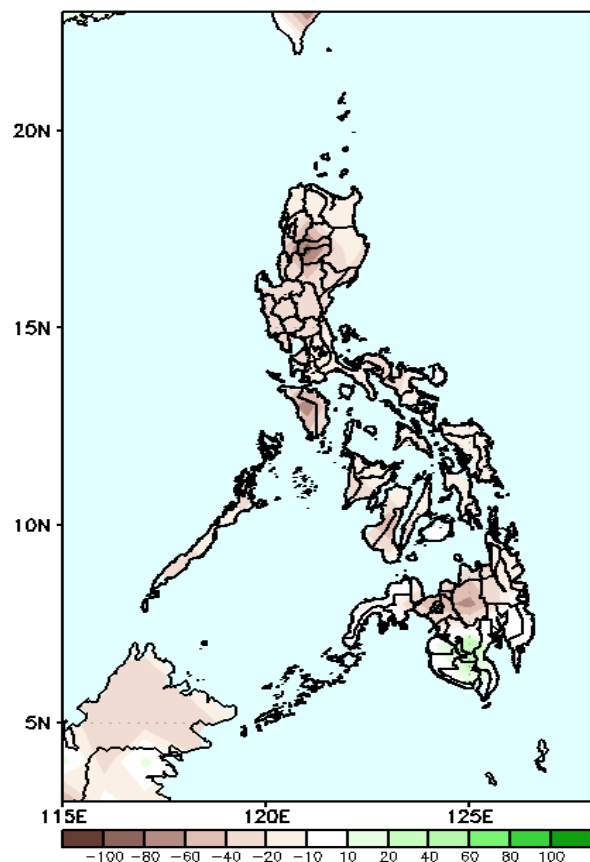
Easterlies is forecasted to affect most parts of the country; expect dry and hot weather during the forecast period.

Precipitation Anomaly and Exceedance Probability > 25/50 mm



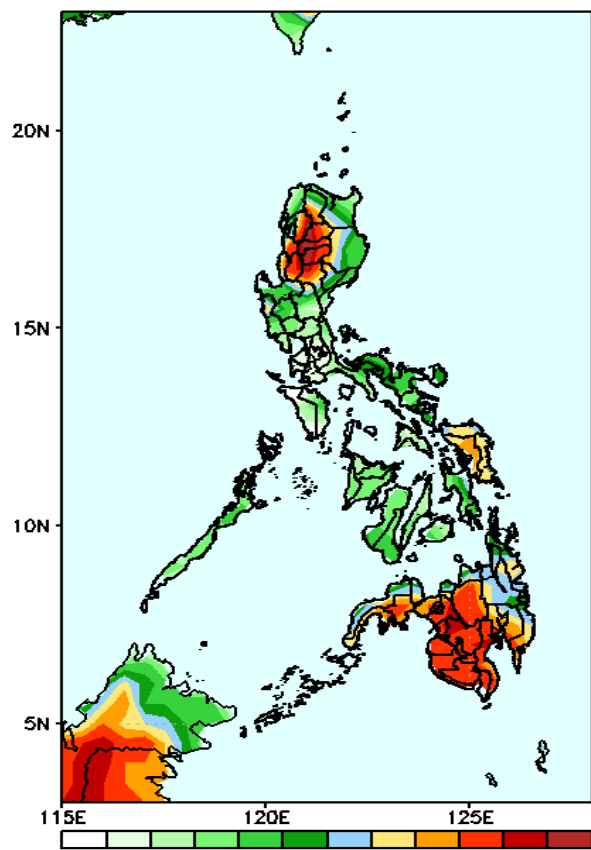
Week 2: Apr 19-25, 2023

GEFS Week-2 Precip Anomaly
Valid: 20230419 - 20230425



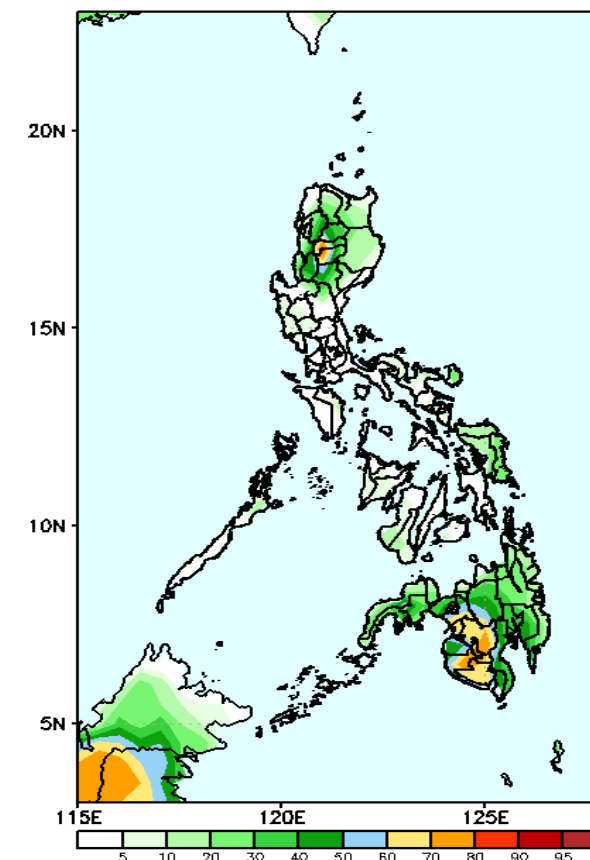
Rainfall deficit of 20-80mm is expected in most parts of the country except SOCCSKARGEN where 10-20mm increase of rainfall will be likely during the forecast period.

GEFS Week-2 Exceedance Prob. > 25mm
Valid: 20230419 - 20230425



High to very high probability of rainfall to exceed 25mm in most parts of CAR, most parts of Mindanao and Nueva Vizcaya; moderate to high probability in most parts of eastern Mindanao, Samar provinces and western portions of Cagayan and Isabela while low chance over the rest of the country.

GEFS Week-2 Exceedance Prob. > 50mm
Valid: 20230419 - 20230425



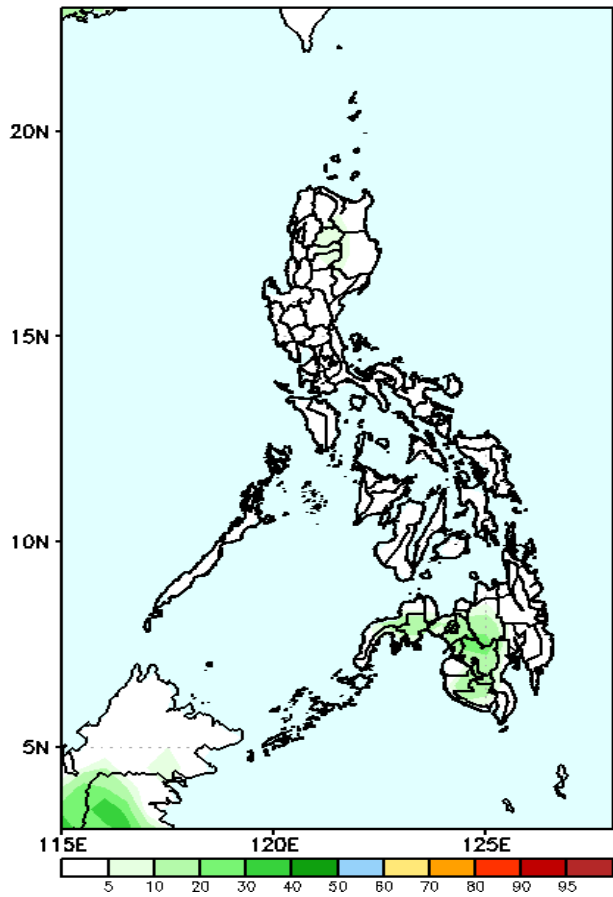
Moderate to high probability of rainfall to exceed 50mm in some portion of CAR and western Mindanao including while low chance over the rest of the country.



Exceedance Probability > 100/150/200 mm

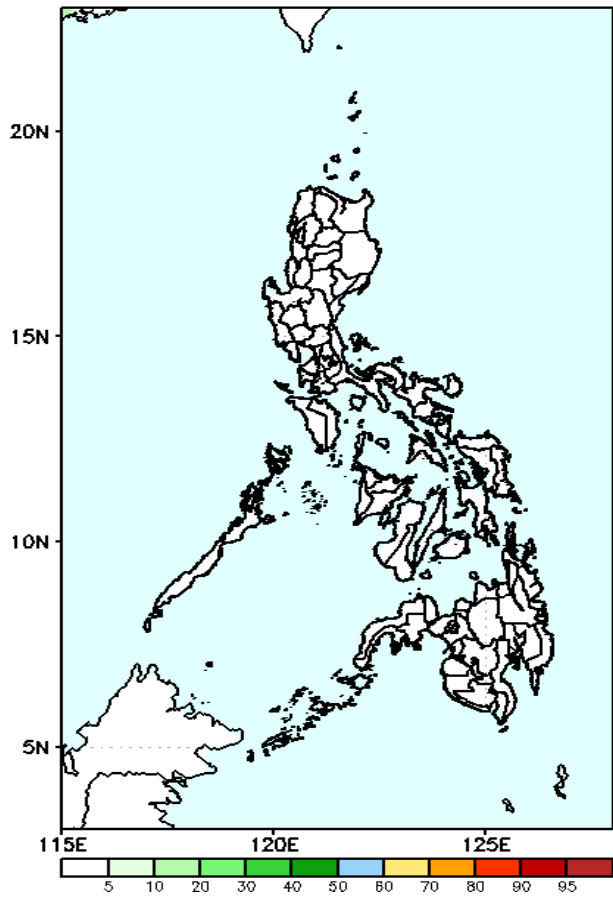
Week 2: Apr 19-25, 2023

GEFS Week-2 Exceedance Prob. > 100mm
Valid: 20230419 – 20230425



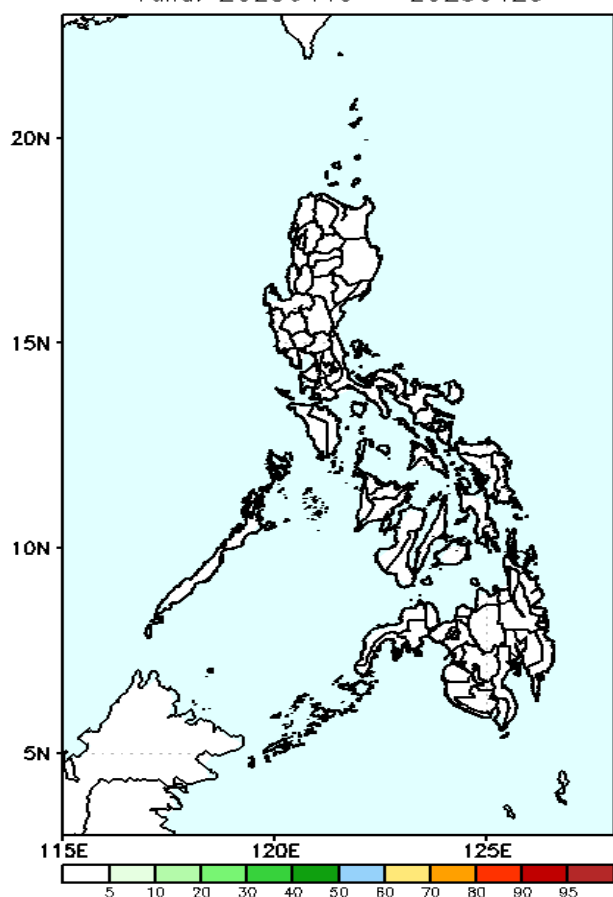
Low probability of rainfall to exceed 100mm in most parts of the country during the forecast period.

GEFS Week-2 Exceedance Prob. > 150mm
Valid: 20230419 – 20230425



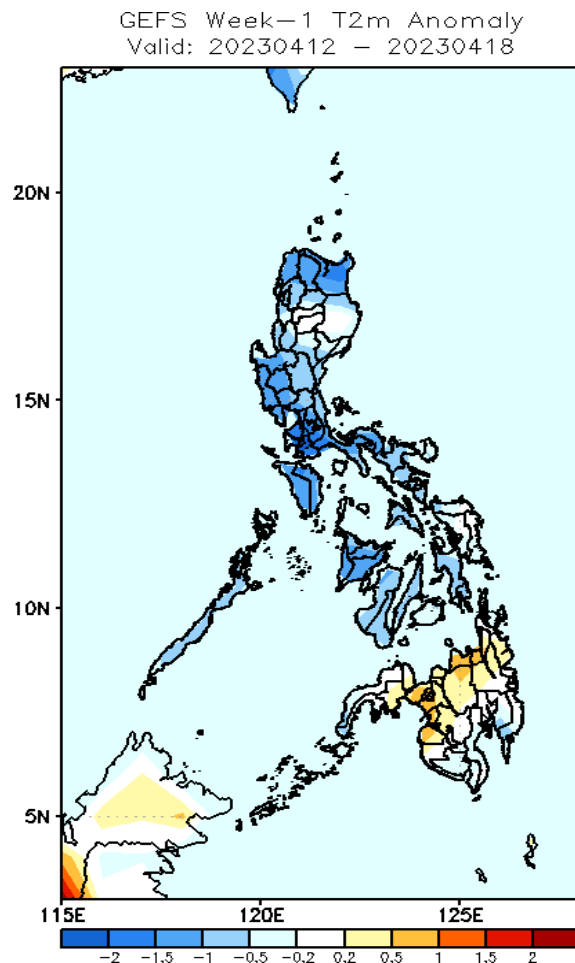
Low probability of rainfall to exceed 150mm in most parts of the country during the forecast period.

GEFS Week-2 Exceedance Prob. > 200mm
Valid: 20230419 – 20230425



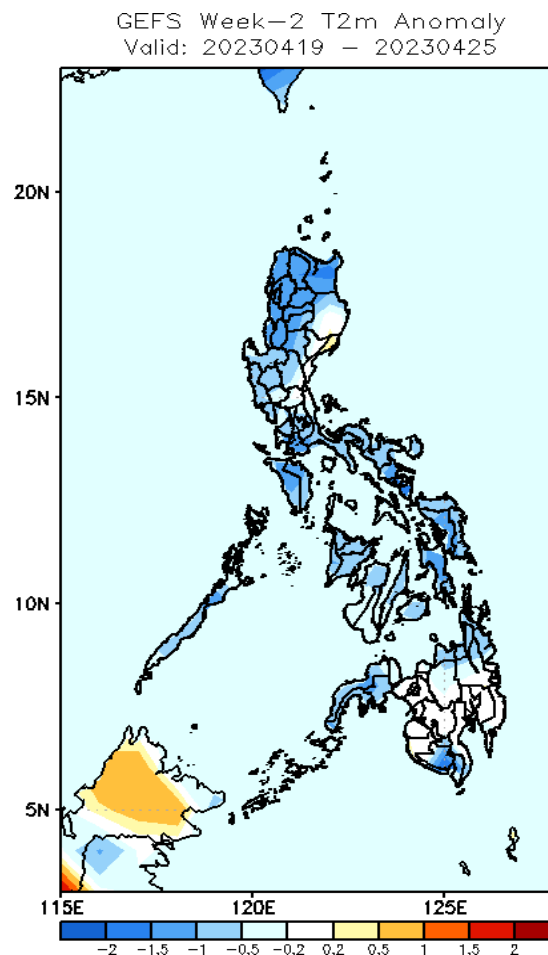
Low probability of rainfall to exceed 200mm in most parts of the country during the forecast period.

GEFS Week-1 & 2 Forecasts: T2m Anomaly



2m Temperature Week 1: Apr 12-18, 2023

Slightly cooler to cooler than average surface air temperature will likely experience in most parts of Luzon and Visayas while average to slightly warmer than average surface air temperature will be likely in Mindanao during the forecast period.



2m Temperature Week 2: Apr 19-25, 2023

Slightly cooler to cooler than average surface air temperature will likely experience in most parts of the country during the forecast period.

