



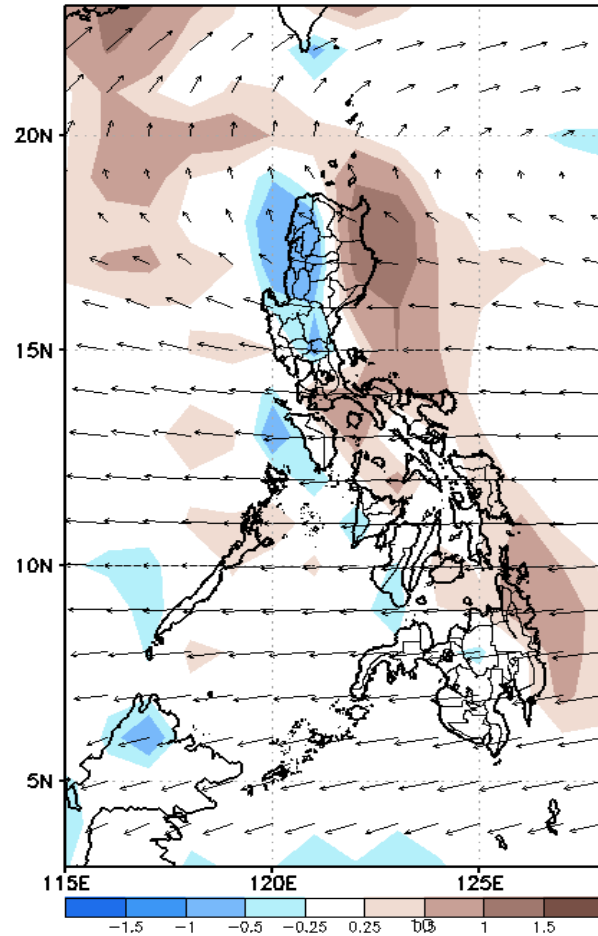
# Week 1 & Week 2 Forecast for the Philippines using GEFS Model



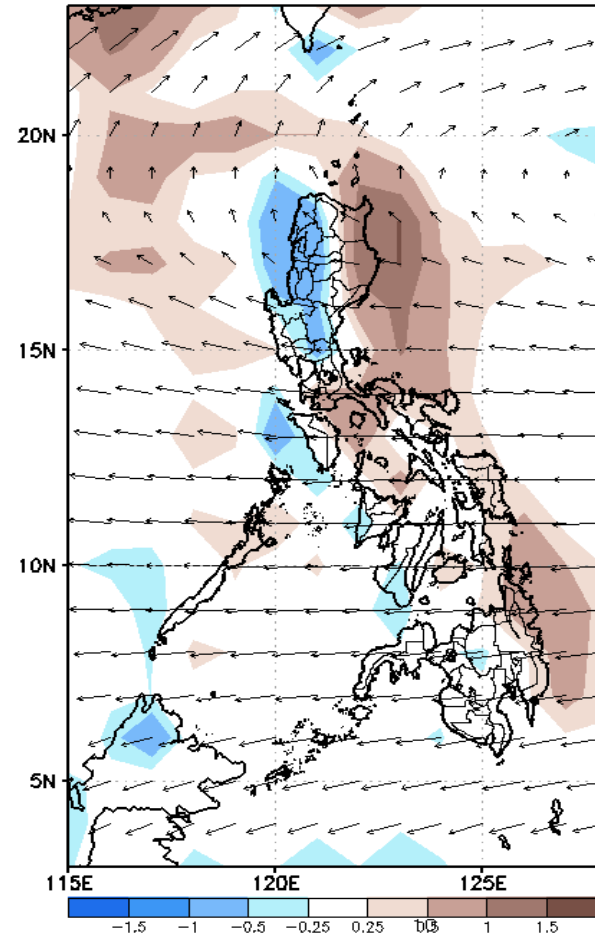
# GEFS Week-1 Forecasts: Wind Anomaly Forecast

Week 1: Dec 12-18, 2022

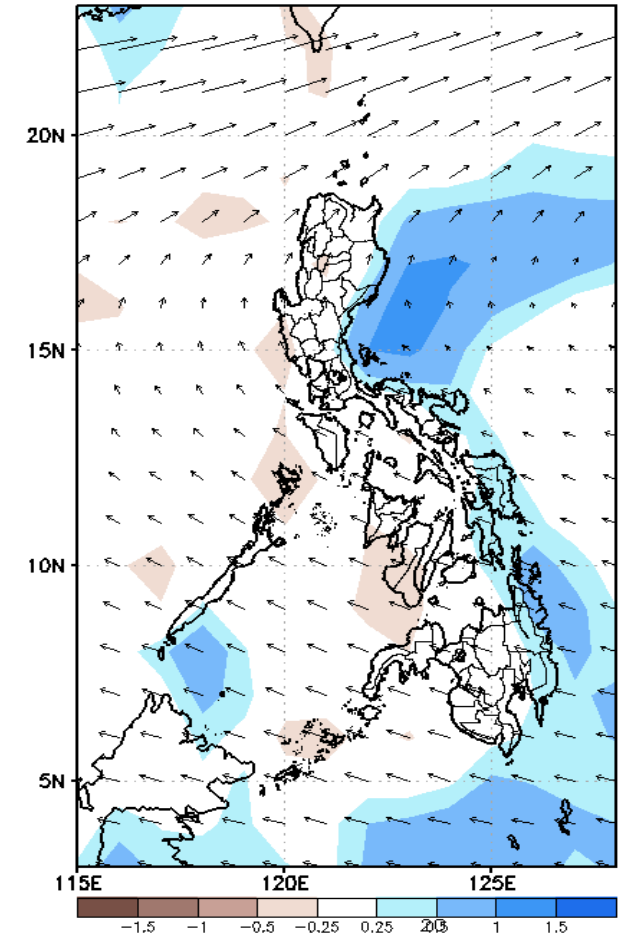
GEFS Week-1 850-hPa Divergence and Wind Anom  
Valid: 20221212 - 20221218



GEFS Week-1 700-hPa Divergence and Wind Anom  
Valid: 20221212 - 20221218



GEFS Week-1 200-hPa Divergence and Wind Anom  
Valid: 20221212 - 20221218

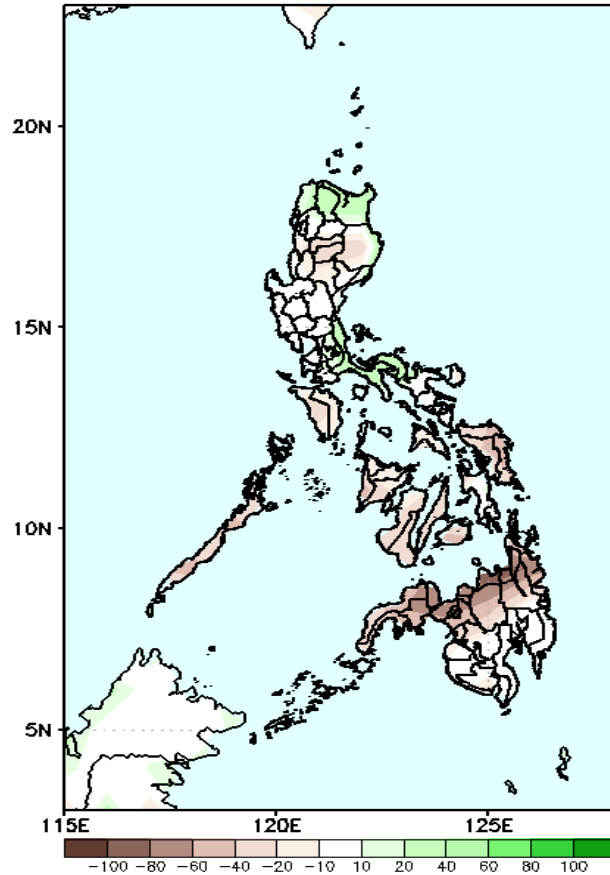


Northeast Monsoon is forecasted to continue affecting Northern and Central Luzon; Easterlies affecting the rest of the country during the forecast period.

# Precipitation Anomaly and Exceedance Probability > 25/50 mm

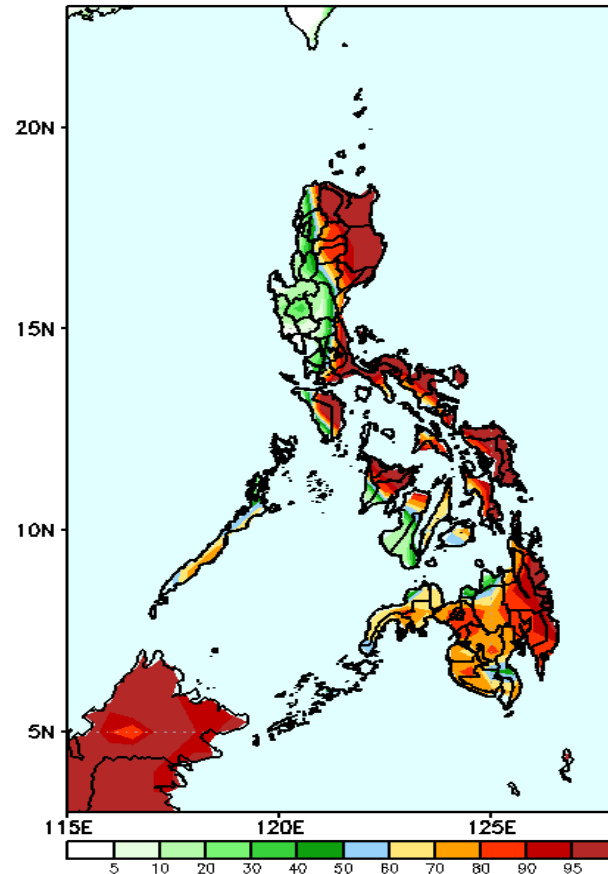
Week 1: Dec 12-18, 2022

GEFS Week-1 Precip Anomaly  
Valid: 20221212 - 20221218



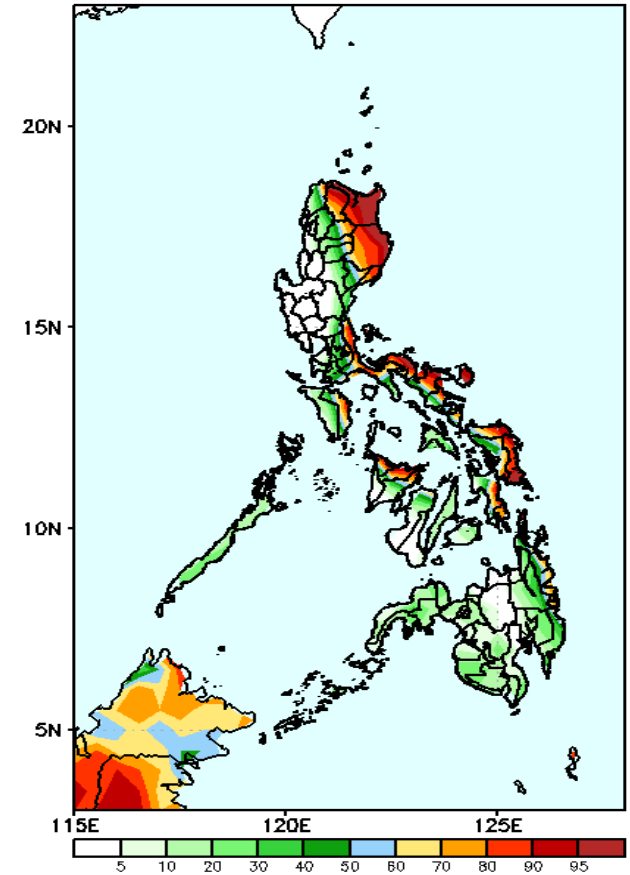
Rainfall deficit of 20-60mm in some areas in Luzon and Visayas and up to 100mm in northern Mindanao (including Zamboanga Peninsula) while 20-60mm increase of rainfall is forecasted in Ilocos Norte, Apayao, Cagayan, Quezon and Camarines Norte during the forecast period.

GEFS Week-1 Exceedance Prob. > 25mm  
Valid: 20221212 - 20221218



High probability of rainfall to exceed 100mm in most parts of the country except in northwestern and central Luzon and some areas in western Visayas while less likely for the rest of the country during the forecast period.

GEFS Week-1 Exceedance Prob. > 50mm  
Valid: 20221212 - 20221218

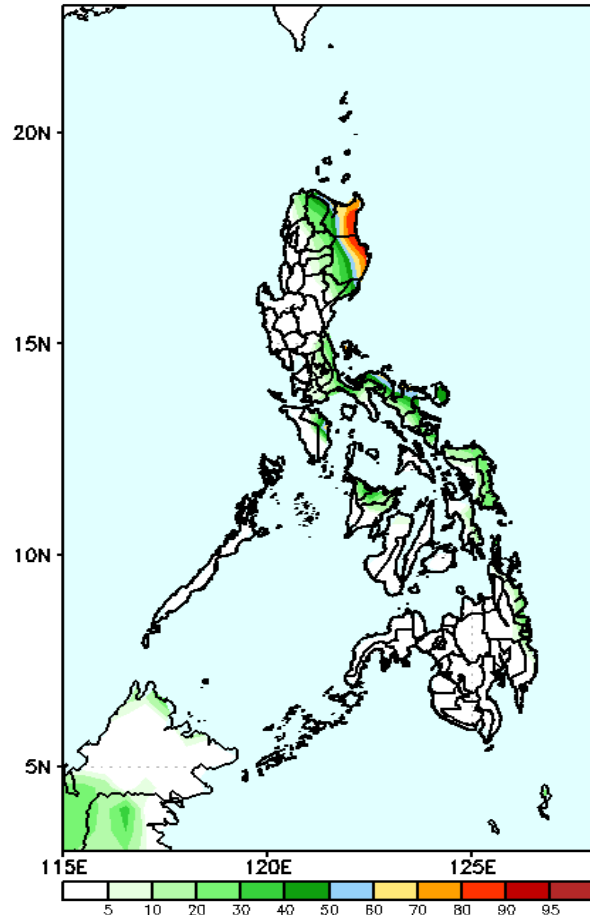


High probability of rainfall to exceed 50mm in Apayao, Cagayan, Isabela, Quezon, Occ. Mindoro, Bicol Region, Eastern Visayas, Aklan, Capiz and eastern CARAGA while less likely for the rest of the country during the forecast period.

# Exceedance Probability > 100/150/200 mm

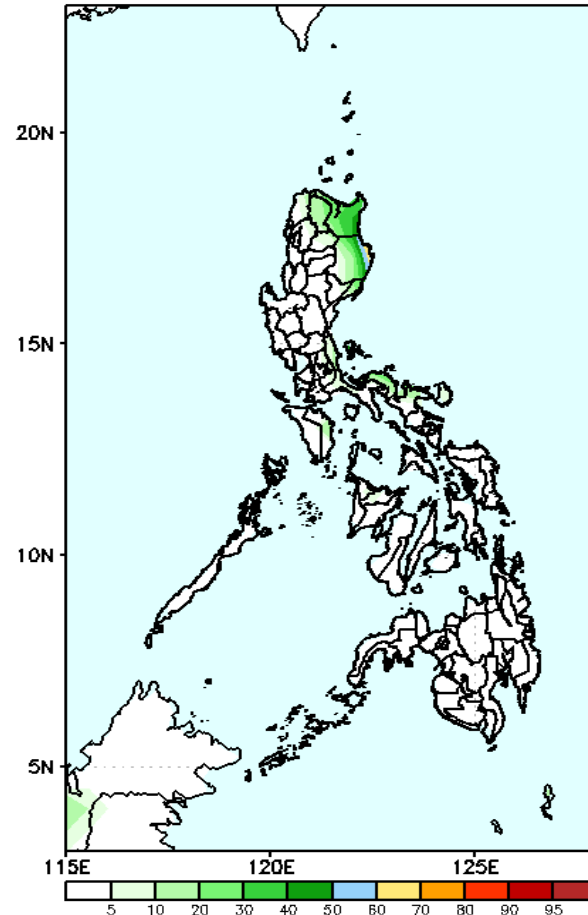
Week 1: Dec 12-18, 2022

GEFS Week-1 Exceedance Prob. > 100mm  
Valid: 20221212 – 20221218



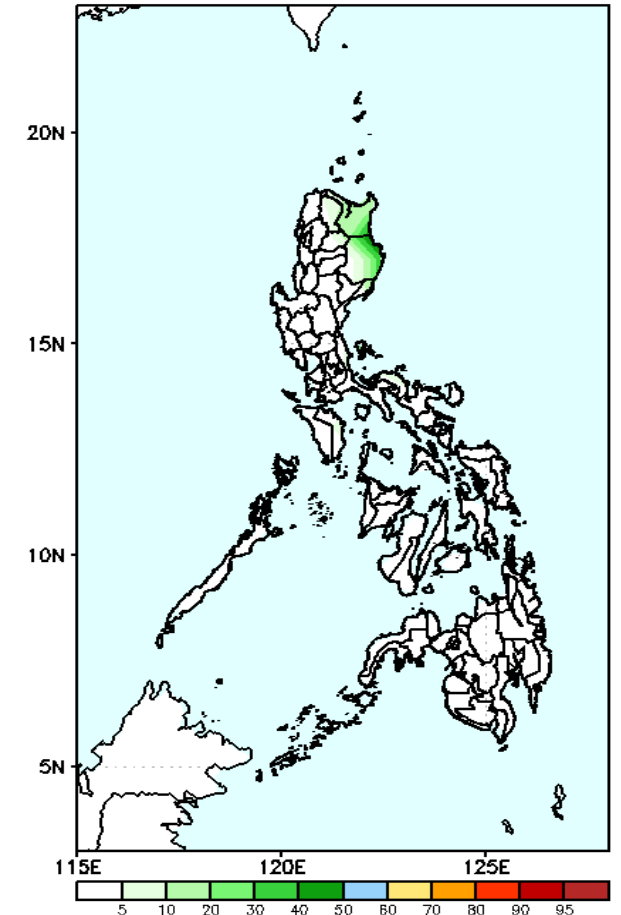
Low probability of rainfall to exceed 100mm in most parts of the country except in eastern Cagayan and Isabela during the forecast period.

GEFS Week-1 Exceedance Prob. > 150mm  
Valid: 20221212 – 20221218



Low probability of rainfall to exceed 150mm in most parts of the country during the forecast period.

GEFS Week-1 Exceedance Prob. > 200mm  
Valid: 20221212 – 20221218

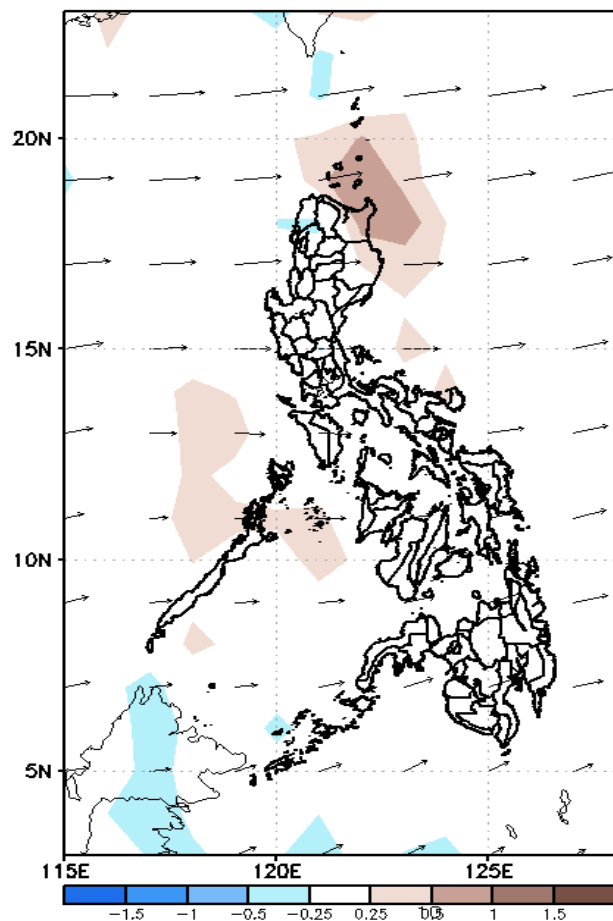


Low probability of rainfall to exceed 200mm in most parts of the country during the forecast period.

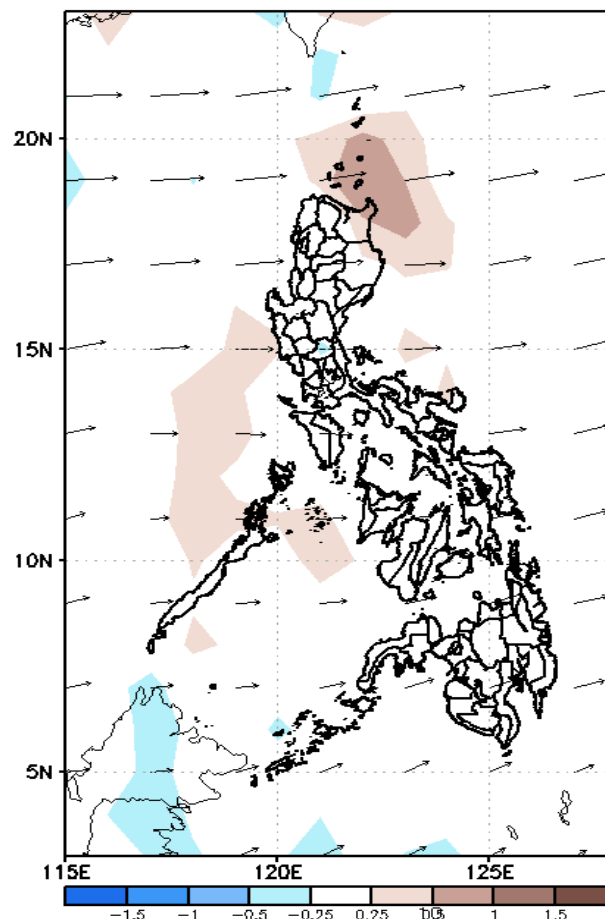
# GEFS Week-2 Forecasts: Wind Anomaly Forecast

Week 2: Dec 19-25, 2022

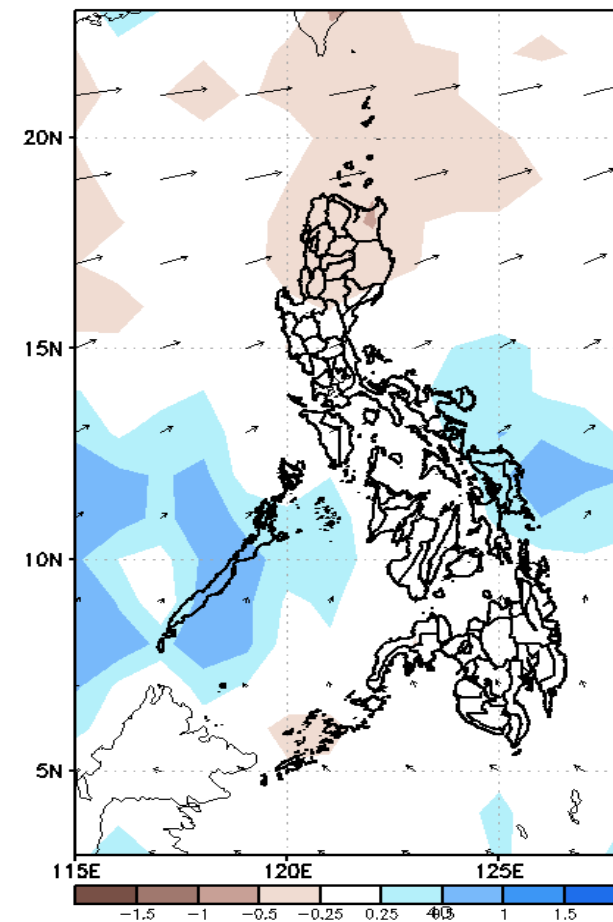
GEFS Week-2 850-hPa Divergence and Wind Anom  
Valid: 20221219 - 20221225



GEFS Week-2 700-hPa Divergence and Wind Anom  
Valid: 20221219 - 20221225



GEFS week-2 200-hPa Divergence and Wind Anom.  
Valid: 20221219 - 20221225

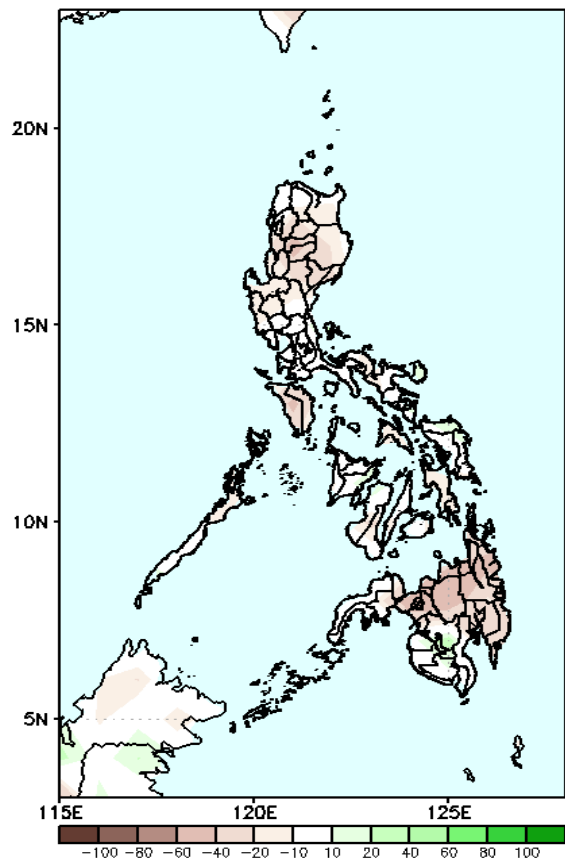


Northeast Monsoon will likely affect Northern and Extreme-Northern Luzon; while Easterlies is forecasted to affect the rest of the country during the forecast period.

# Precipitation Anomaly and Exceedance Probability > 25/50 mm

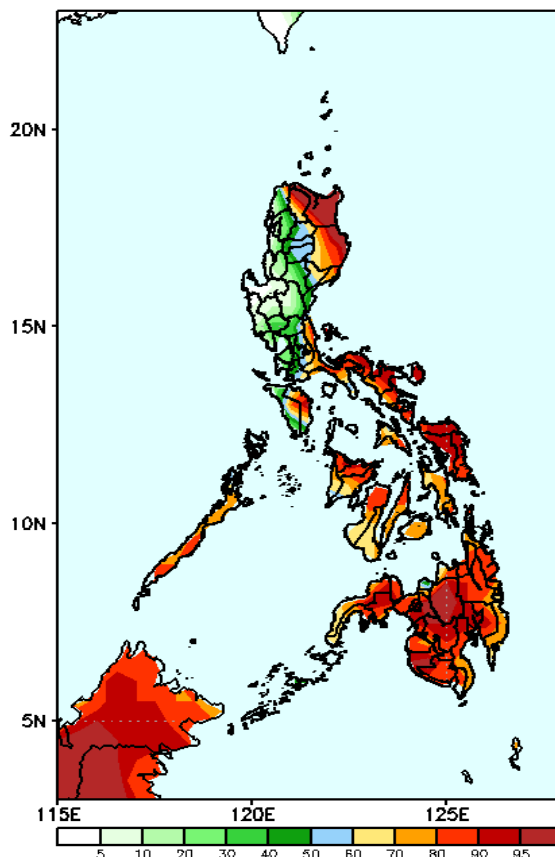
Week 2: Dec 19-25, 2022

GEFS Week-2 Precip Anomaly  
Valid: 20221219 - 20221225



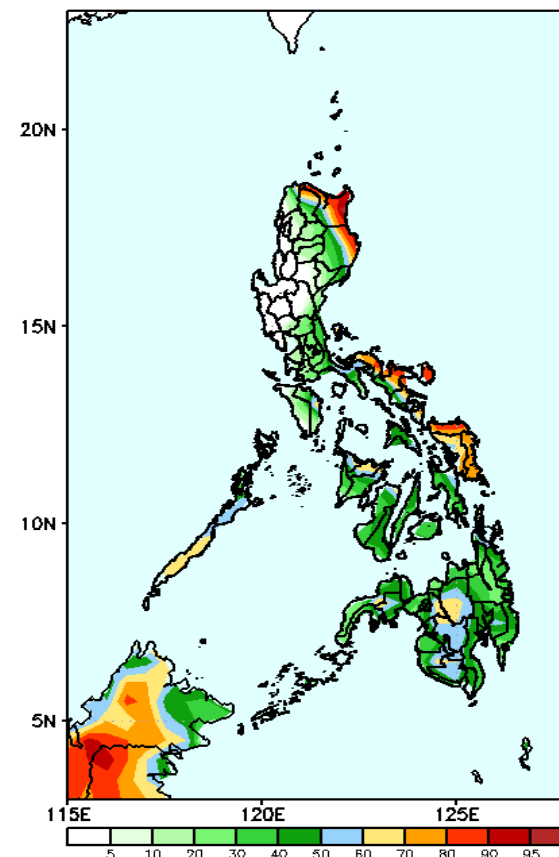
Rainfall deficit of 30-70mm is expected in most parts of the country during the forecast period.

GEFS Week-2 Exceedance Prob. > 25mm  
Valid: 20221219 - 20221225



High probability of rainfall to exceed 25mm in the eastern sections of the country, Mindoro, Palawan and most parts of Visayas and Mindanao while less likely for the rest of Luzon during the forecast period.

GEFS Week-2 Exceedance Prob. > 50mm  
Valid: 20221219 - 20221225



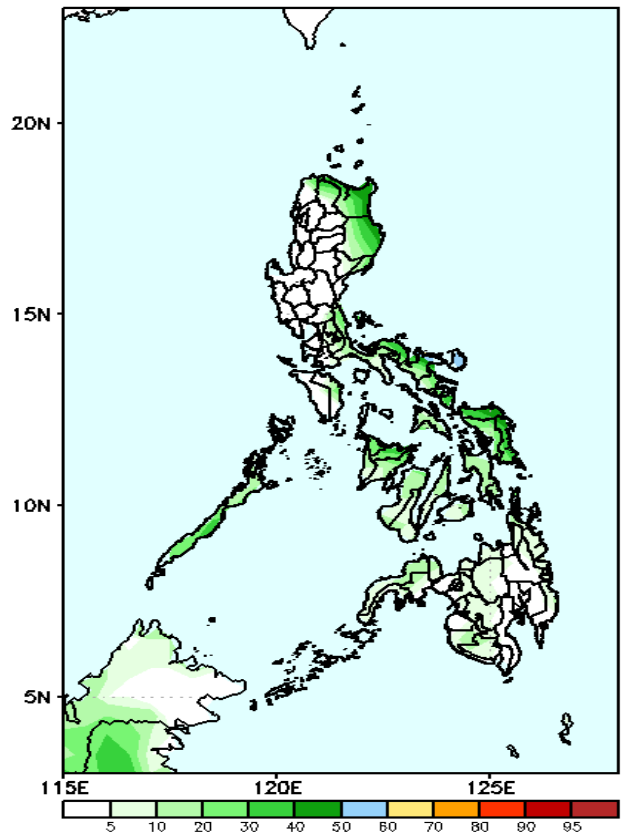
High probability of rainfall to exceed 50mm in most parts of Apayao, Cagayan, Isabela, Bicol Region and Samar provinces while less likely for the rest of the country during the forecast period.



# Exceedance Probability > 100/150/200 mm

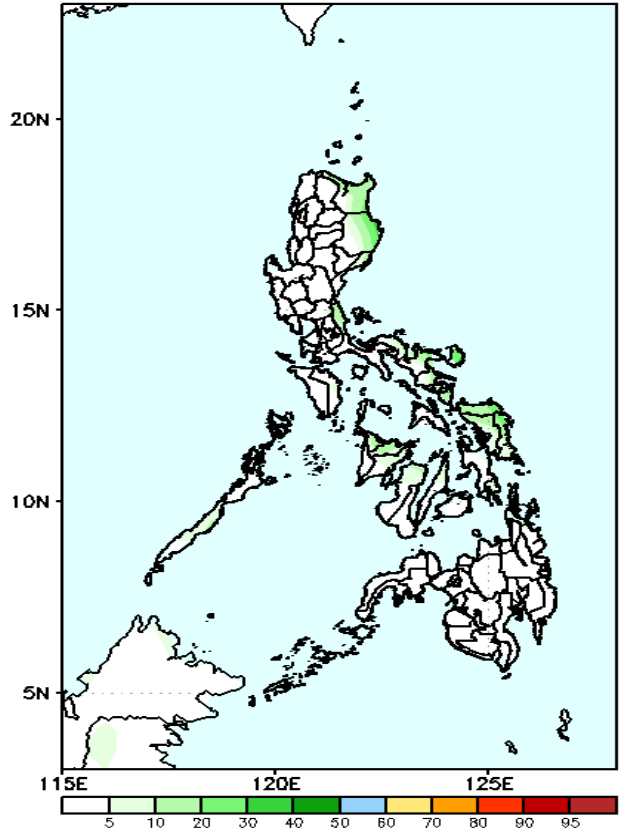
Week 2: Dec 19-25, 2022

GEFS Week-2 Exceedance Prob. > 100mm  
Valid: 20221219 – 20221225



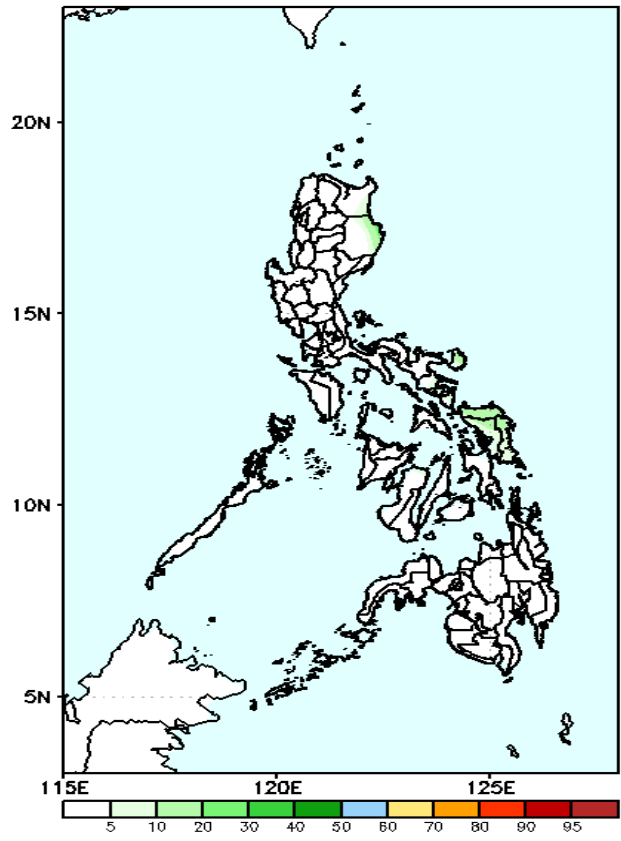
Low probability of rainfall to exceed 100mm in most parts of the country during the forecast period.

GEFS Week-2 Exceedance Prob. > 150mm  
Valid: 20221219 – 20221225



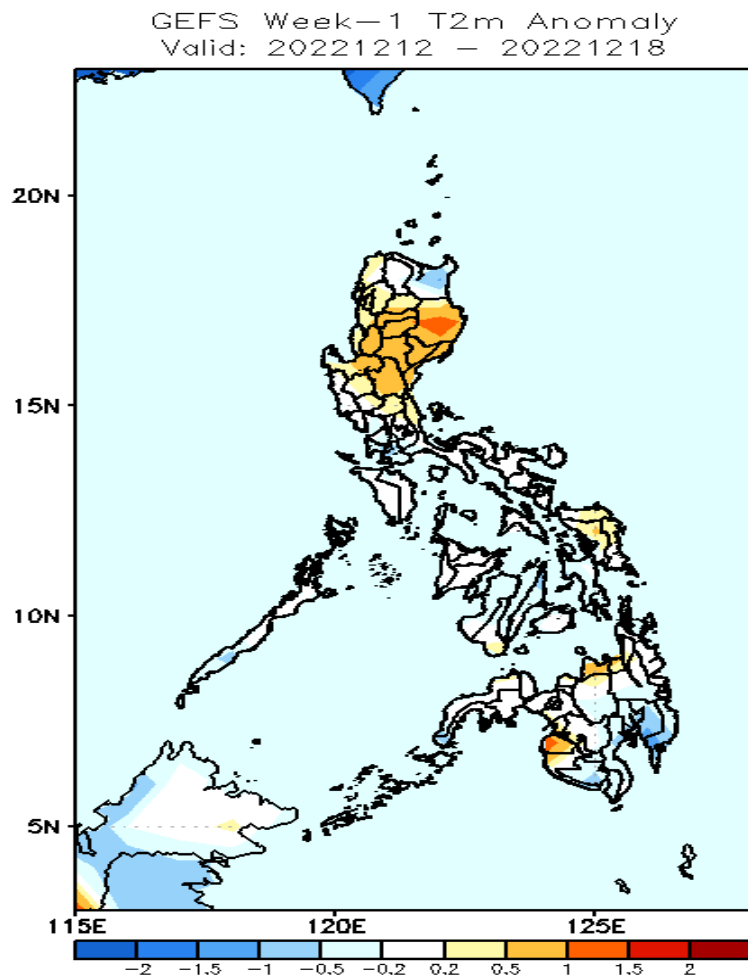
Low probability of rainfall to exceed 150mm in most parts of the country during the forecast period.

GEFS Week-2 Exceedance Prob. > 200mm  
Valid: 20221219 – 20221225



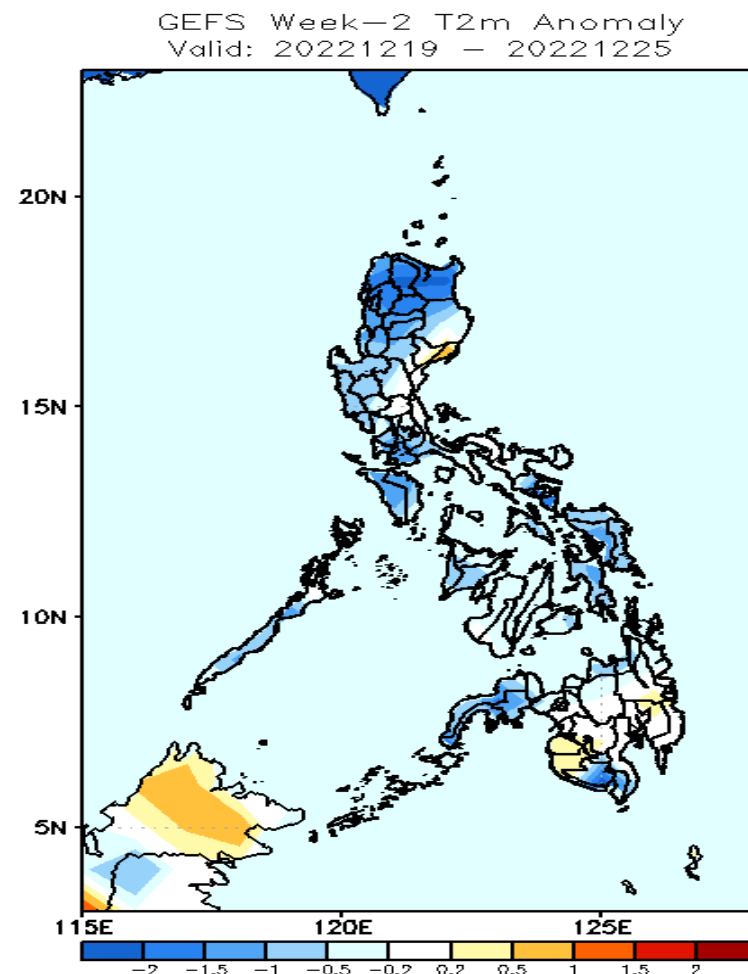
Low probability of rainfall to exceed 200mm in most parts of the country during the forecast period.

# GEFS Week-1 & 2 Forecasts: T2m Anomaly



## 2m Temperature Week 1: Dec 12-18, 2022

Slightly warmer to warmer than average surface air temperature will likely experience in most parts of Northern Luzon, Central Luzon, Samar provinces, Misamis Oriental, and Maguindanao while average to slightly cooler is forecasted for the rest of the country during the forecast period.



## 2m Temperature Week 2: Dec 19-25, 2022

Slightly cooler to cooler than average surface air temperature will likely experience in most parts of Luzon, Visayas, Zamboanga Peninsula, Misamis Oriental, South Cotabato and Sarangani while average to slightly warmer is forecasted for the rest of the country during the forecast period.