



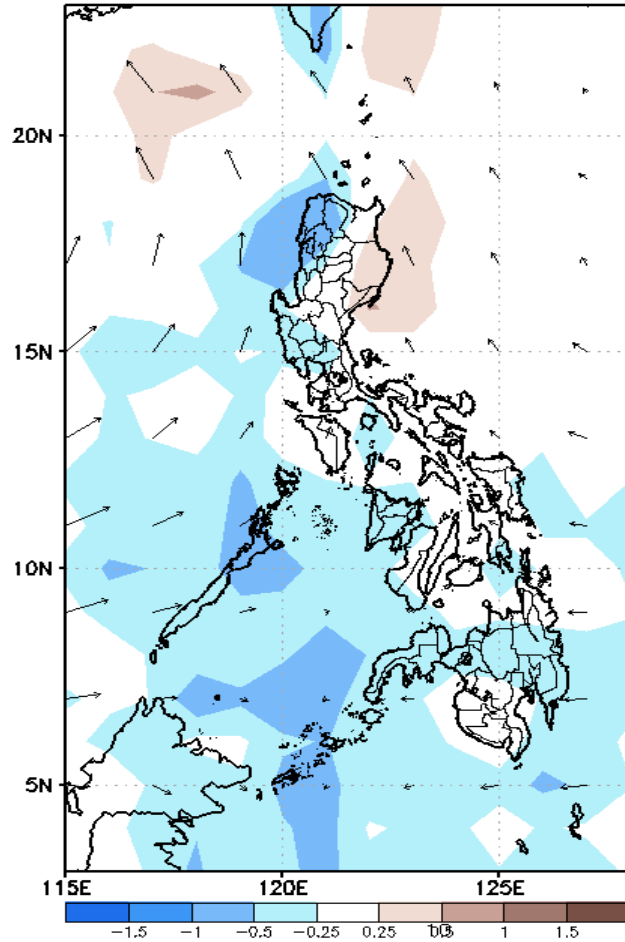
Week 1 & Week 2 Forecast for the Philippines using GEFS Model



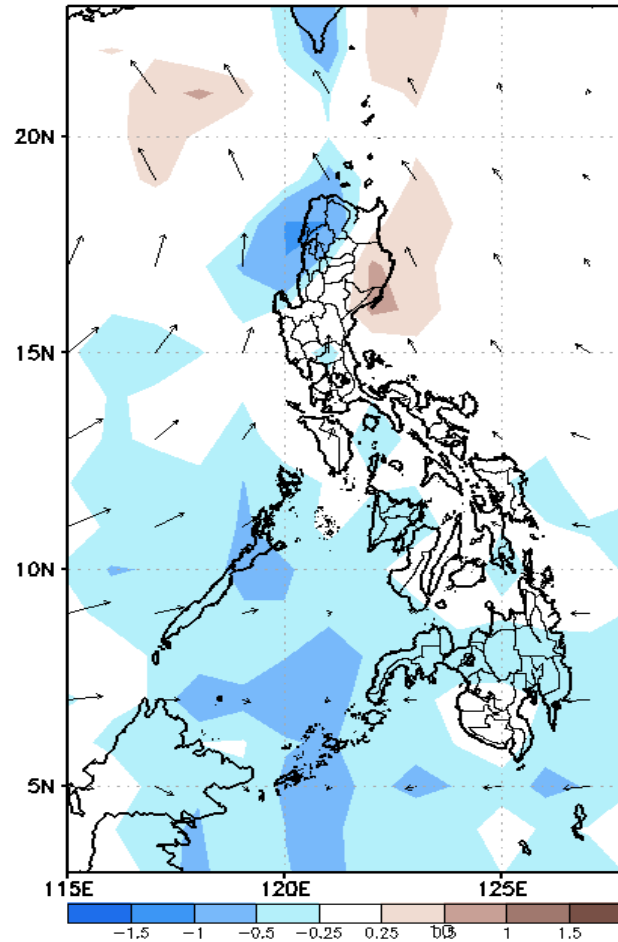
GEFS Week-1 Forecasts: Divergence & Wind Anomaly

Week 1: October 12-18, 2020

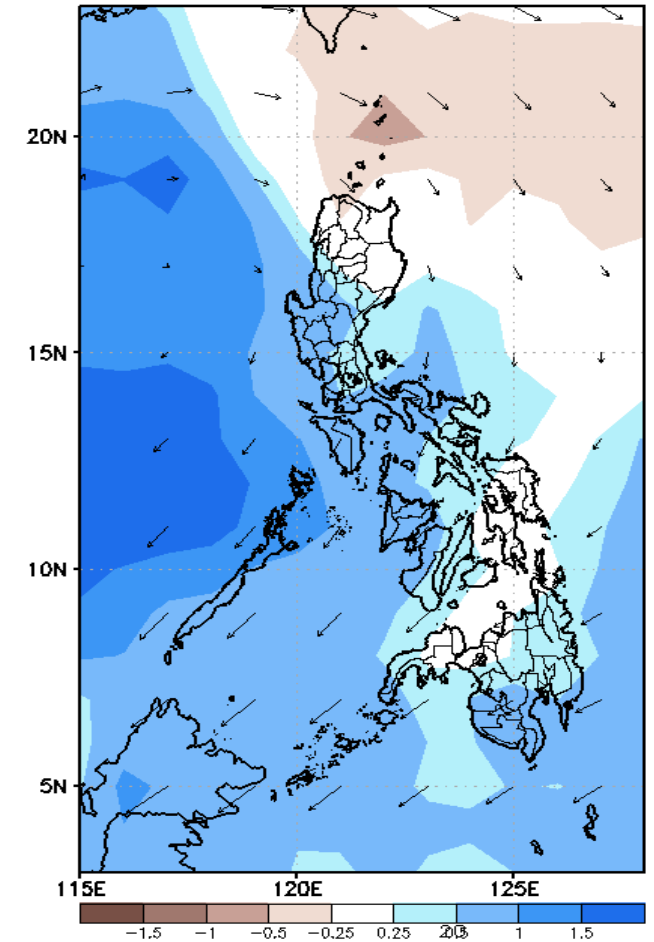
GEFS Week-1 850-hPa Divergence and Wind Anom
Valid: 20201012 - 20201018



GEFS Week-1 700-hPa Divergence and Wind Anom
Valid: 20201012 - 20201018



GEFS Week-1 200-hPa Divergence and Wind Anom
Valid: 20201012 - 20201018

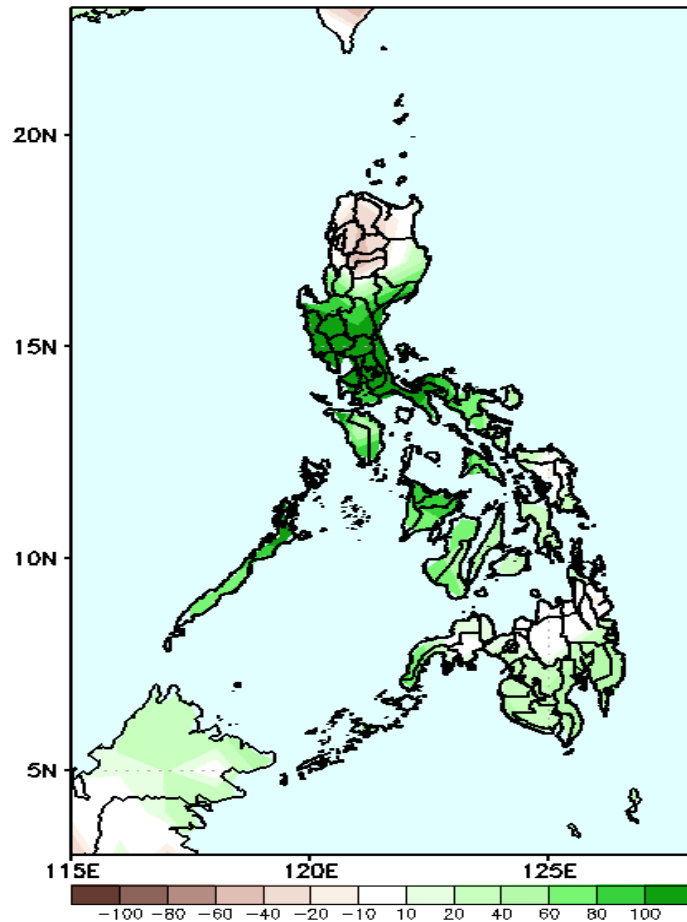


Upper level (200hPa) Divergence suggest likelihood of precipitation in most parts of the country (except northern Luzon and eastern Visayas) during the forecast period. Southwest monsoon affecting northern Luzon while easterlies affecting most parts of the country during the forecast period.

Precipitation Anomaly and Exceedance Probability > 25/50 mm

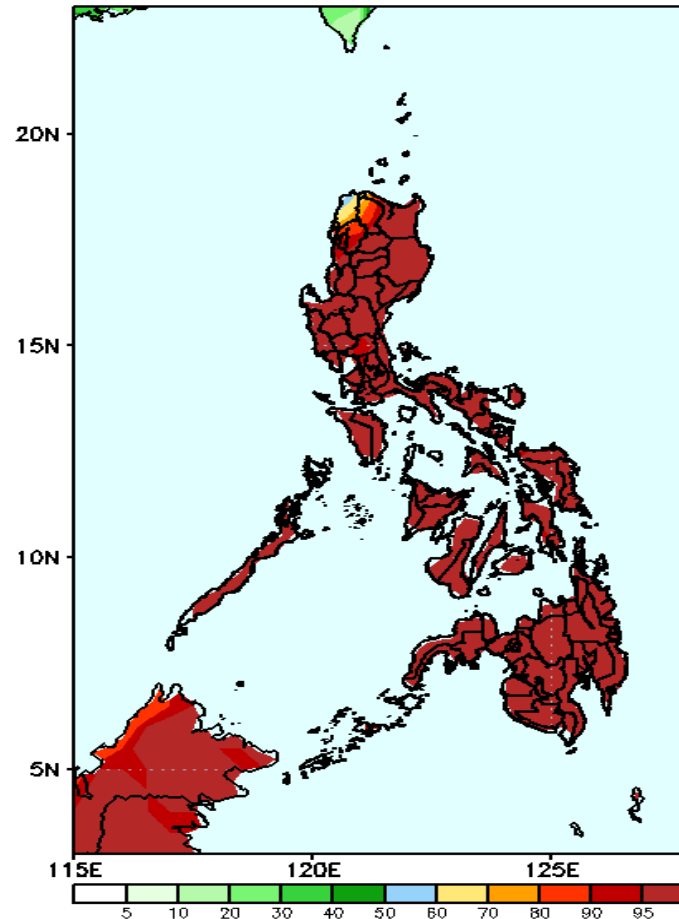
Week 1: October 12-18, 2020

GEFS Week-1 Precip Anomaly
Valid: 20201012 - 20201018



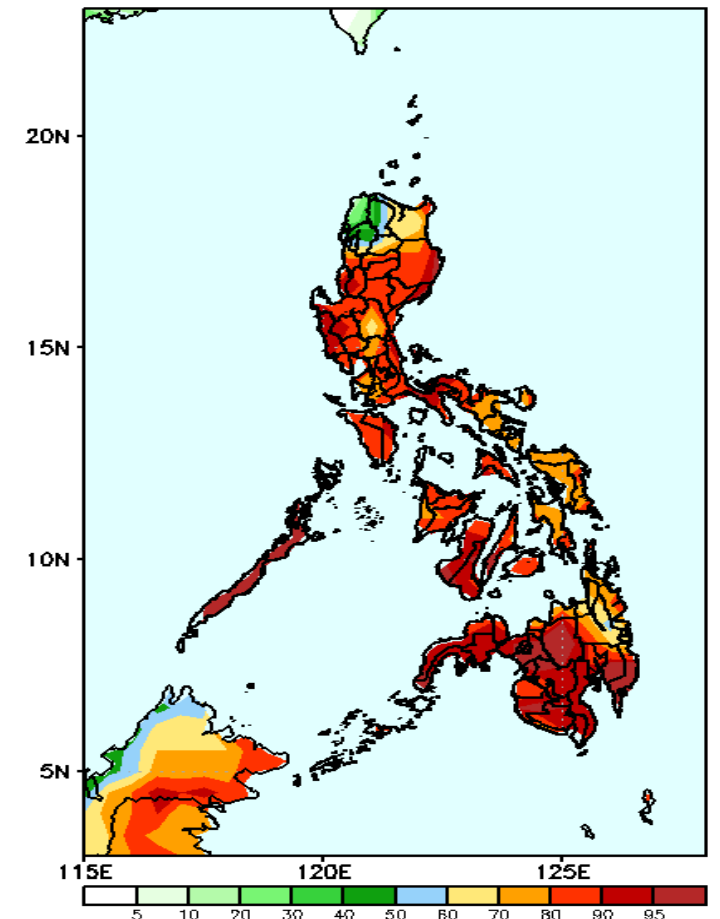
Increase of rainfall of up to 100mm is expected in southern half of Luzon and Visayas while rainfall deficit up to 60mm in Cordillera Region during the forecast period.

GEFS Week-1 Exceedance Prob. > 25mm
Valid: 20201012 - 20201018



High probability of rainfall to exceed 25mm in most parts the country is expected during the forecast period.

GEFS Week-1 Exceedance Prob. > 50mm
Valid: 20201012 - 20201018

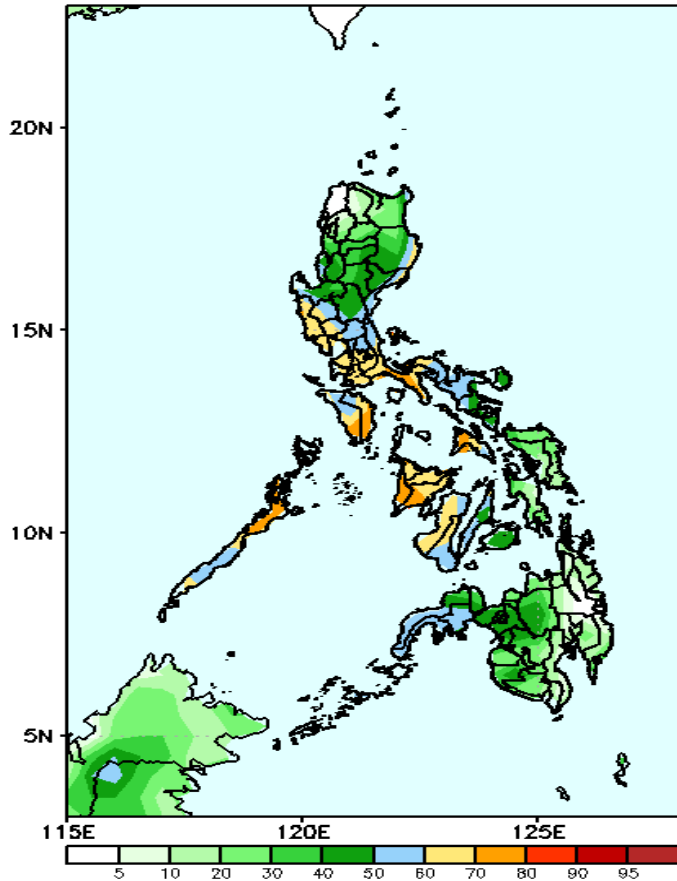


High probability of rainfall to exceed 50mm in most parts the country is expected except in Apayao, Abra and Ilocos Norte during the forecast period.

Exceedance Probability > 100/150/200 mm

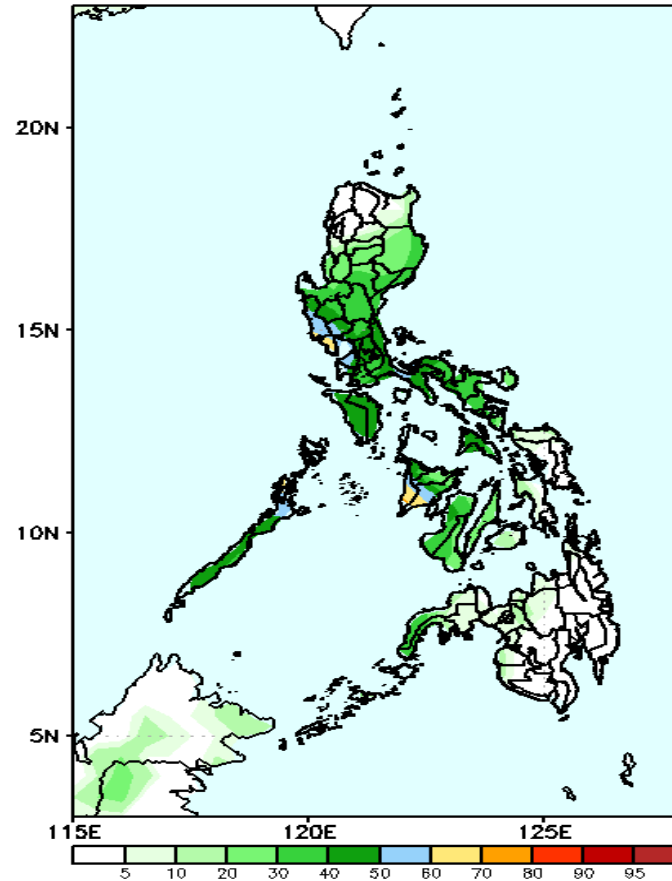
Week 1: October 12-18, 2020

GEFS Week-1 Exceedance Prob. > 100mm
Valid: 20201012 - 20201018



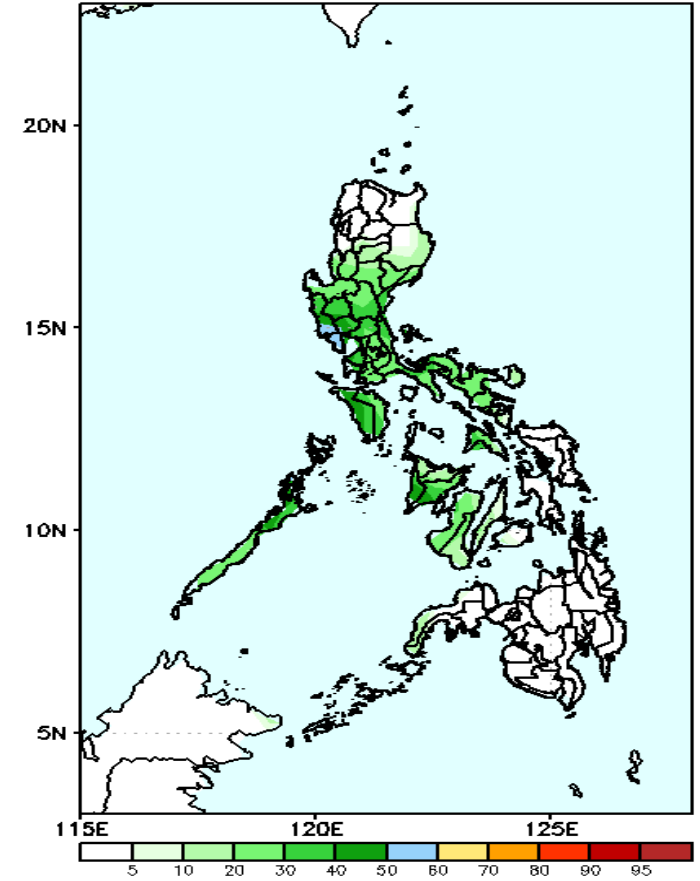
50-70% probability of rainfall to exceed 100mm in southern Luzon, CALABARZON, MIMAROPA, most parts of central Luzon and western Visayas while less likely for the rest of the country during the forecast period.

GEFS Week-1 Exceedance Prob. > 150mm
Valid: 20201012 - 20201018



Less probability of rainfall to exceed 150mm in most parts of the country during the forecast period.

GEFS Week-1 Exceedance Prob. > 200mm
Valid: 20201012 - 20201018



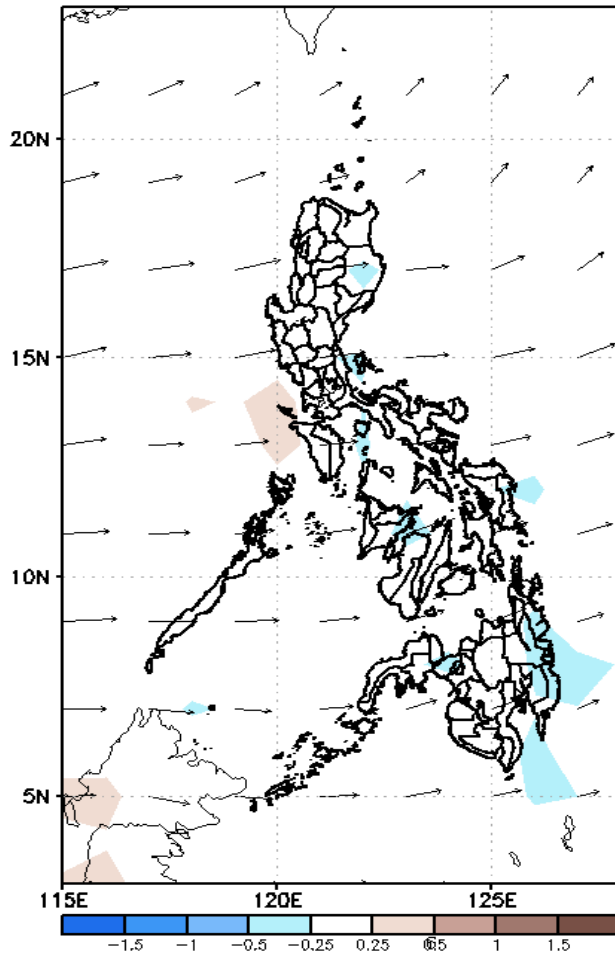
Less probability of rainfall to exceed 200mm in most parts of the country during the forecast period.



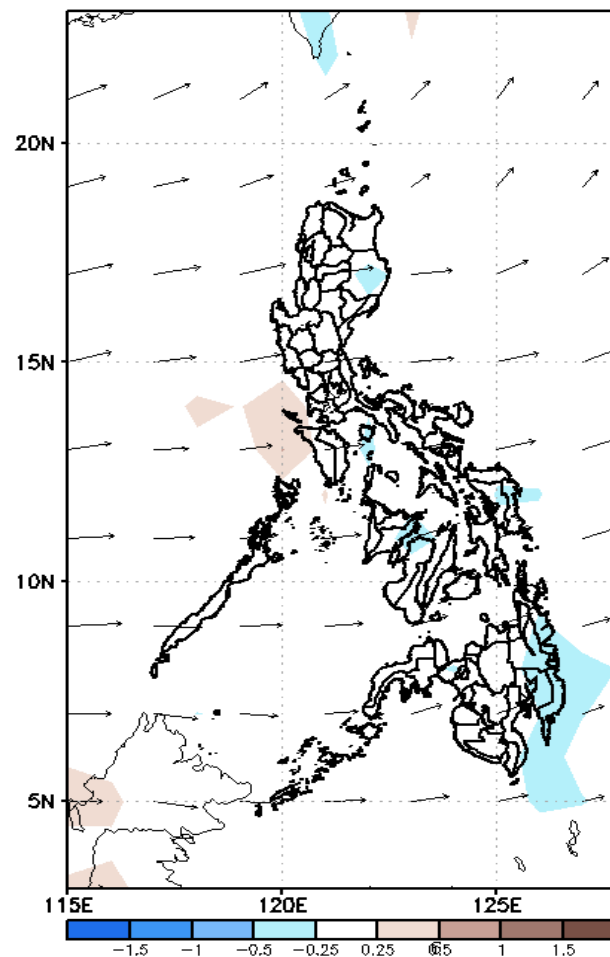
GEFS Week-2 Forecasts: Divergence & Wind Anomaly

Week 2: Oct 19-25, 2020

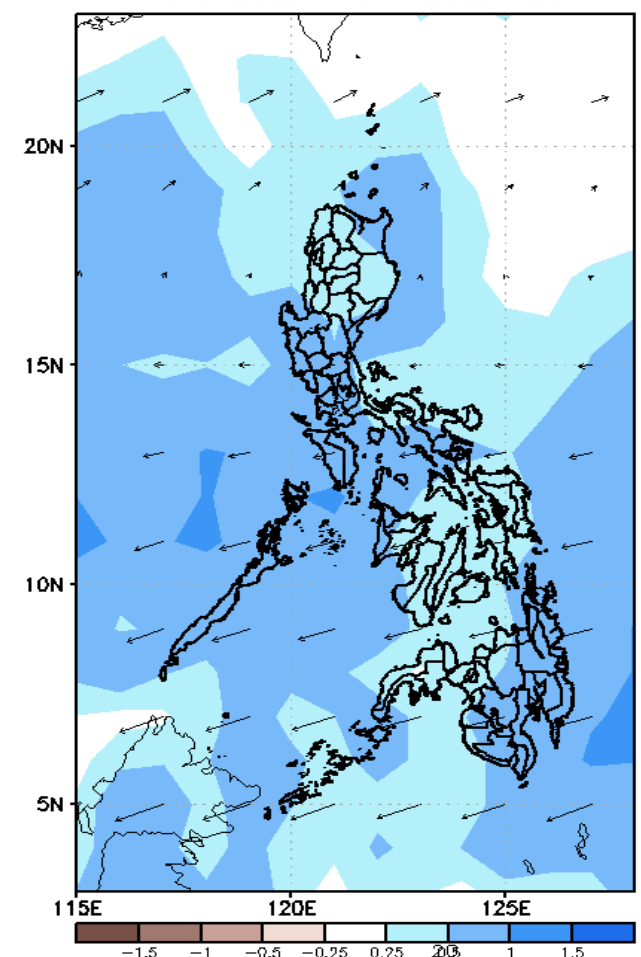
GEFS Week-2 850-hPa Divergence and Wind Anom
Valid: 20201019 - 20201025



GEFS Week-2 700-hPa Divergence and Wind Anom
Valid: 20201019 - 20201025



GEFS week-2 200-hPa Divergence and Wind Anom
Valid: 20201019 - 20201025

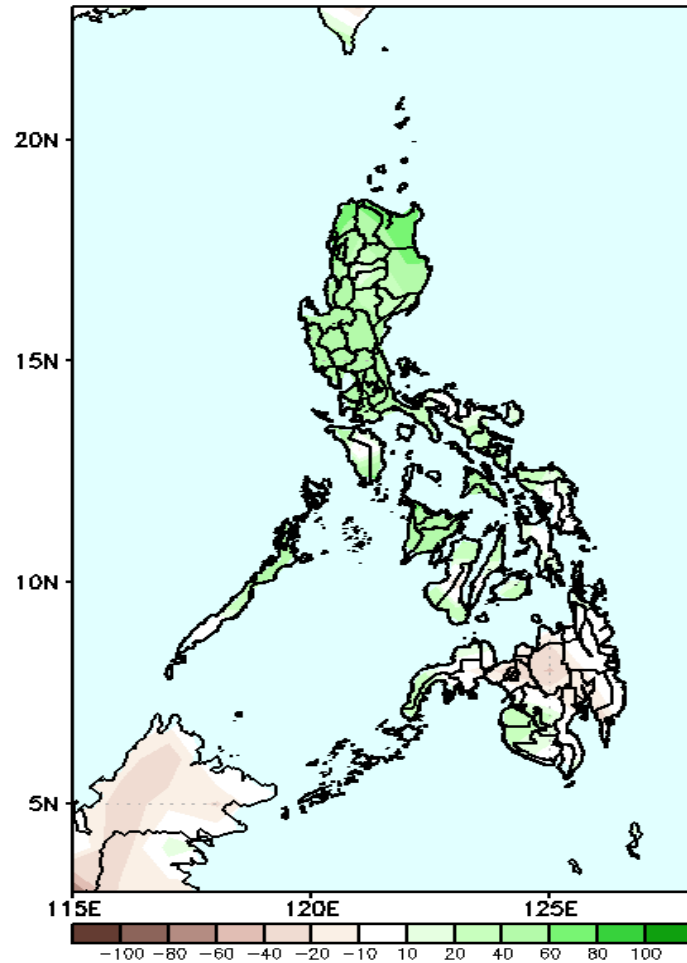


Upper level (200hPa) Divergence suggest likelihood of precipitation in most parts of the country during the forecast period. Southwest monsoon affecting northern and central Luzon while easterlies affecting the remaining parts of the country during the forecast period.

Precipitation Anomaly and Exceedance Probability > 25/50 mm

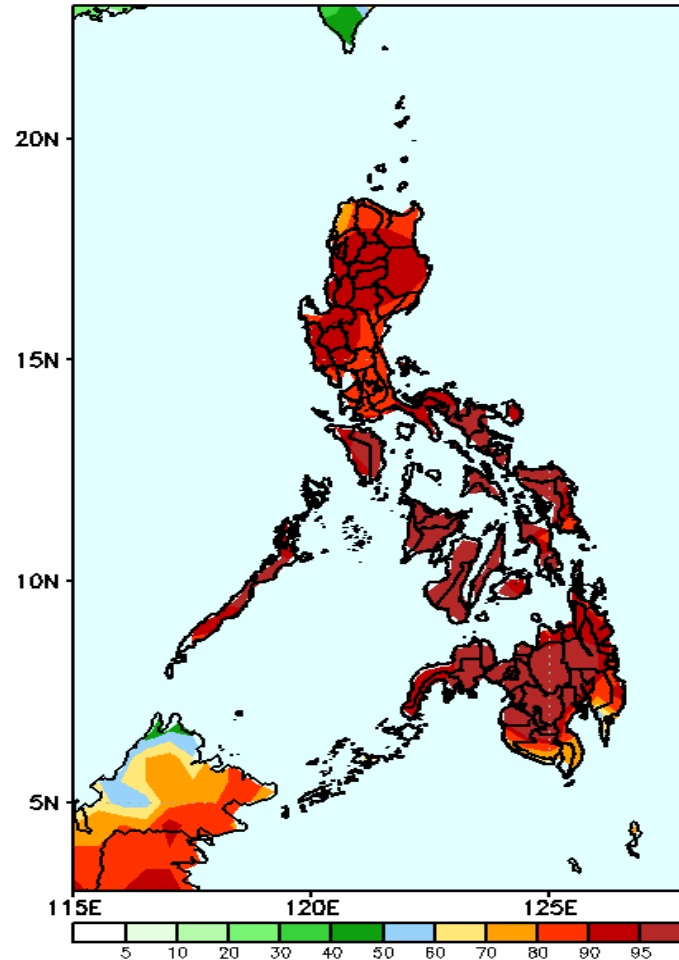
Week 2: Oct 19-25, 2020

GEFS Week-2 Precip Anomaly
Valid: 20201019 – 20201025



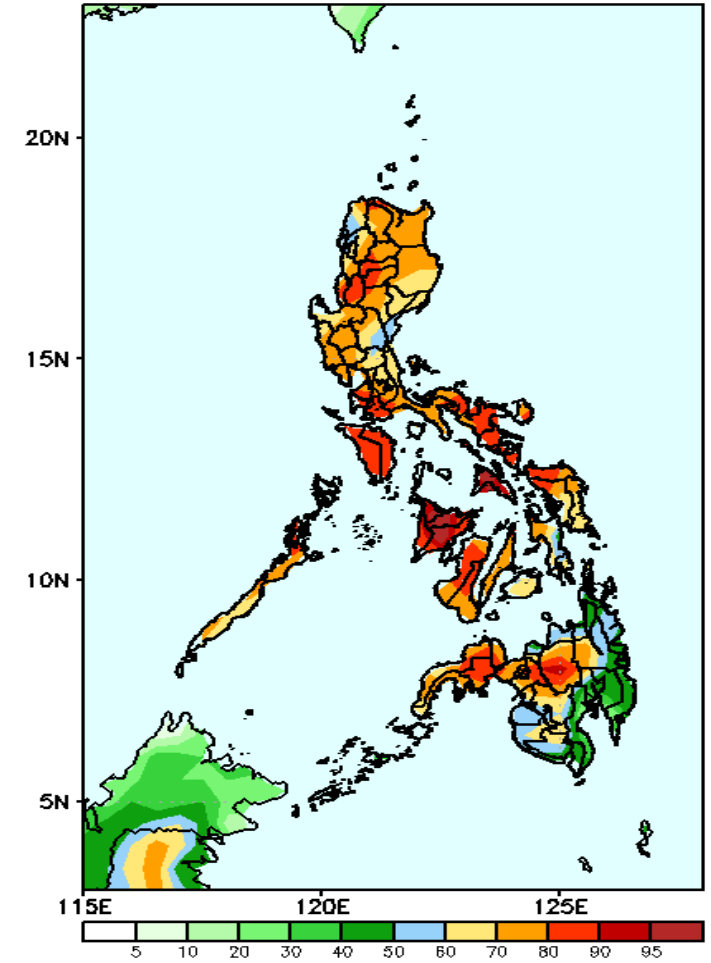
Increase of rainfall of 40-100mm in most parts of Luzon and Visayas is expected during the forecast period.

GEFS Week-2 Exceedance Prob. > 25mm
Valid: 20201019 – 20201025



High probability of rainfall to exceed 25mm in most parts the country is expected during the forecast period.

GEFS Week-2 Exceedance Prob. > 50mm
Valid: 20201019 – 20201025

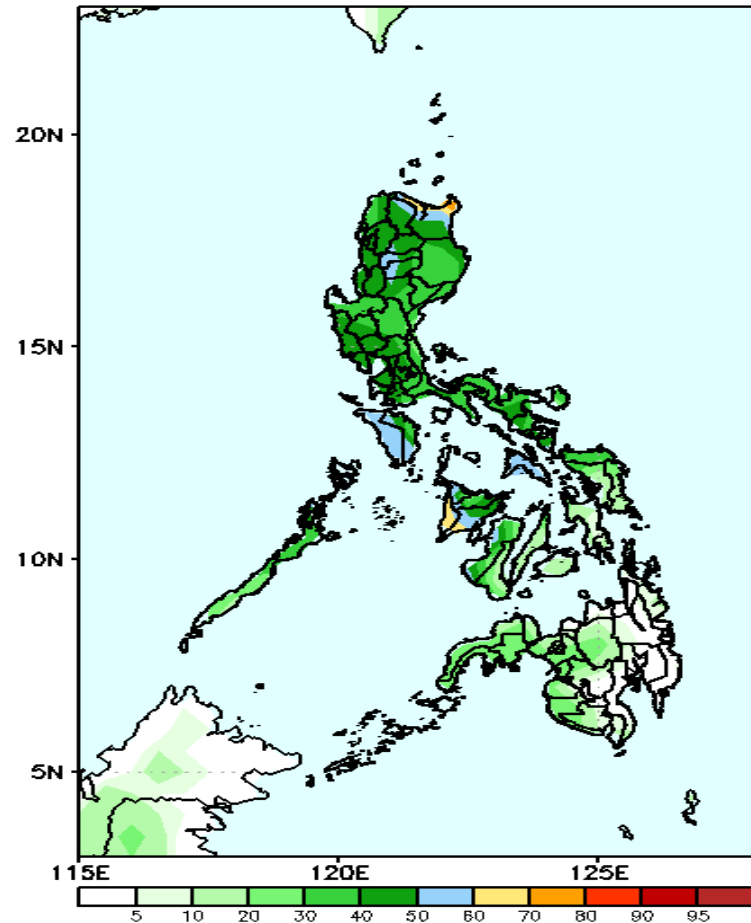


High probability of rainfall to exceed 50mm in most parts of the country except CARAGA and Davao Region during the forecast period.

Exceedance Probability > 100/150/200 mm

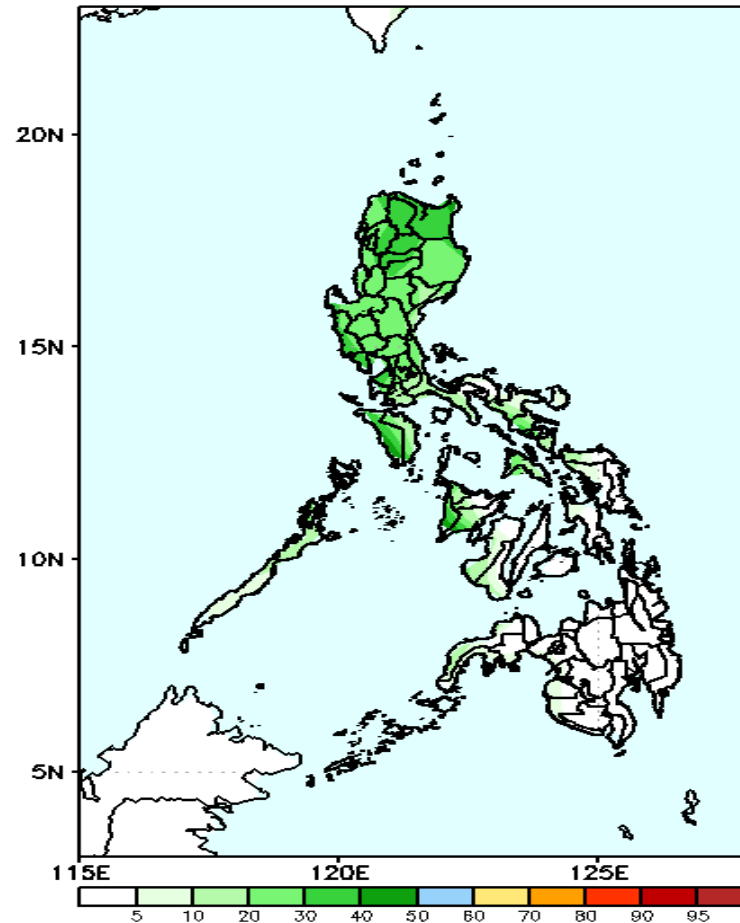
Week 2: Oct 19-25, 2020

GEFS Week-2 Exceedance Prob. > 100mm
Valid: 20201019 - 20201025



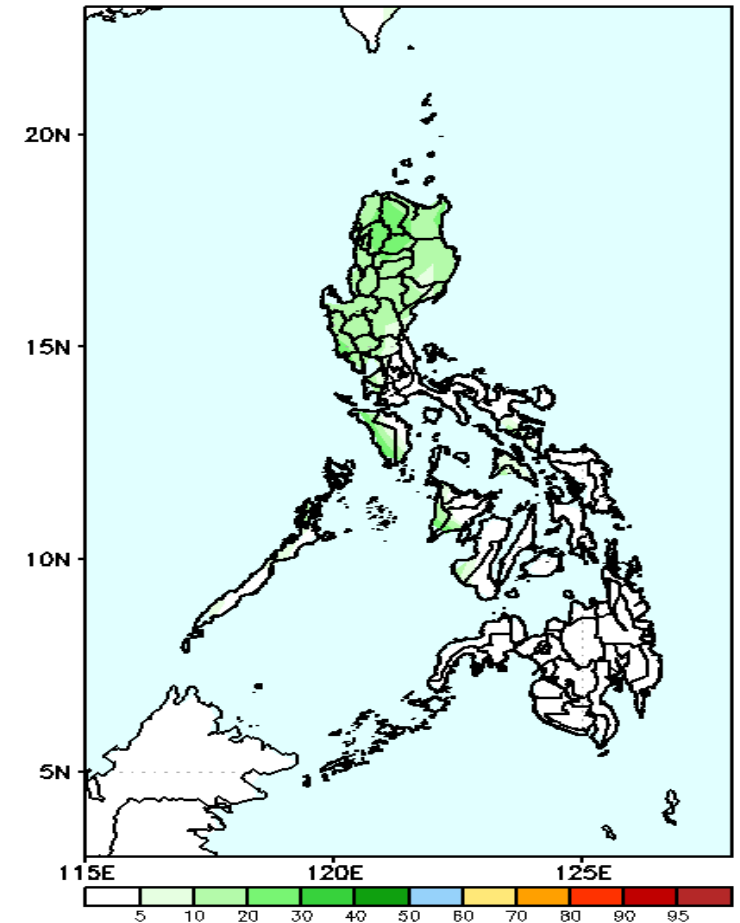
Less probability of rainfall to exceed 100mm in most parts of the country during the forecast period.

GEFS Week-2 Exceedance Prob. > 150mm
Valid: 20201019 - 20201025



Less probability of rainfall to exceed 150mm in most parts of the country is expected during the forecast period.

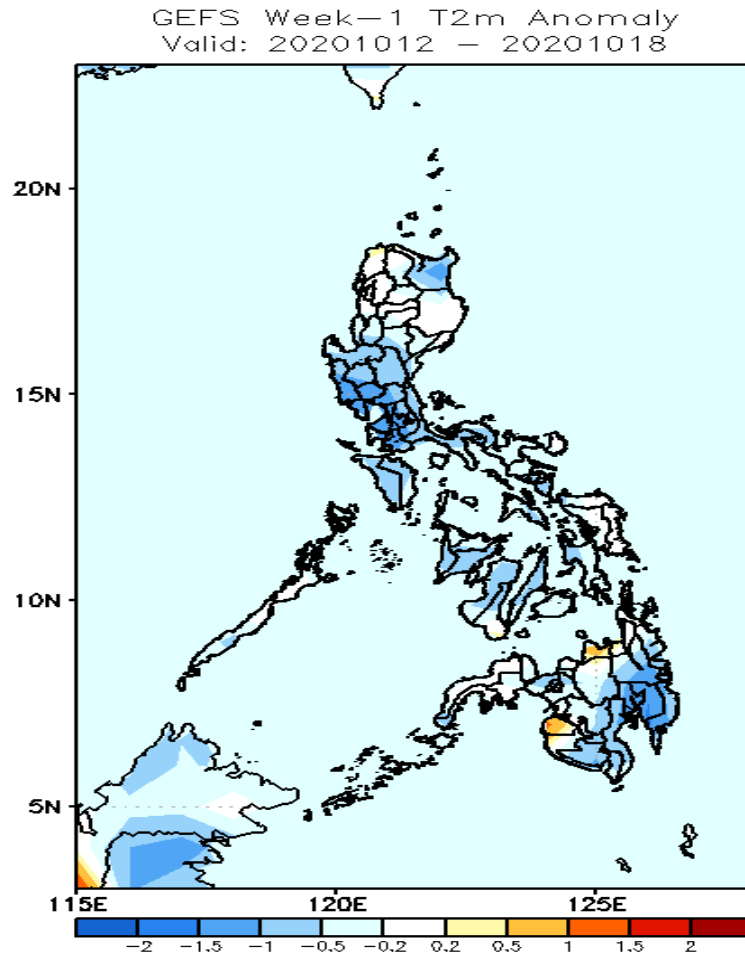
GEFS Week-2 Exceedance Prob. > 200mm
Valid: 20201019 - 20201025



Less probability of rainfall to exceed 200mm in most parts of the country is expected during the forecast period.

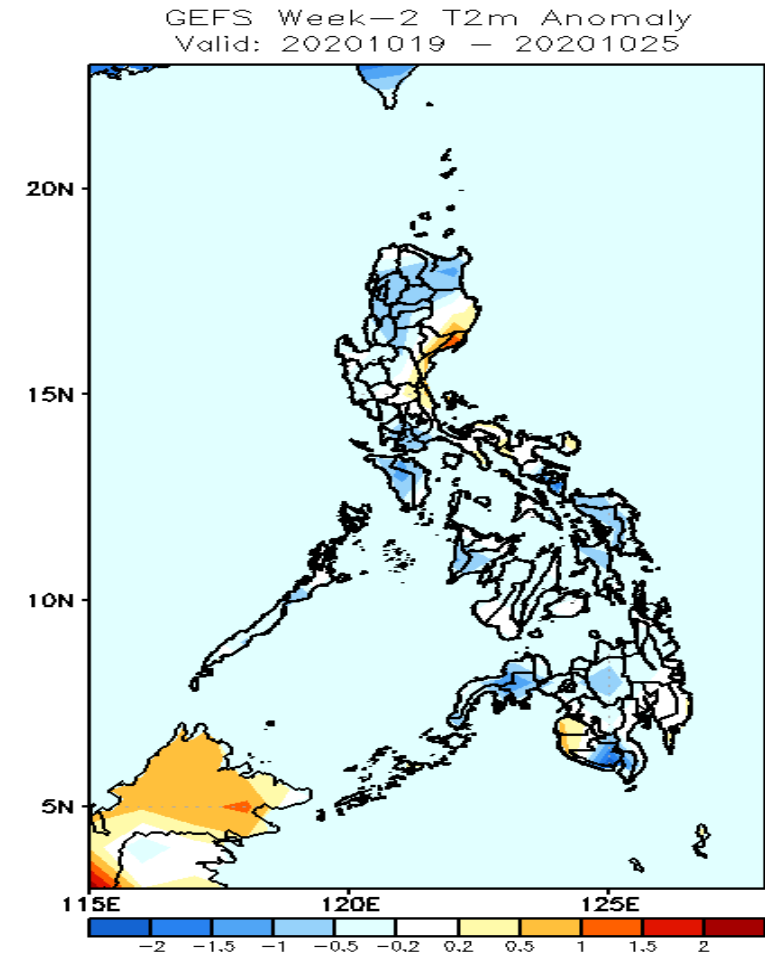


GEFS Week-1 & 2 Forecasts: T2m Anomaly



2m Temperature Week 1: October 12-18, 2020

Slightly cooler to cooler than average surface air temperature is expected in Cagayan, Mindoro, in central and southern Luzon, western Visayas, and eastern and southern Mindanao while average temperature for the rest of the country during the forecast period.



2m Temperature Week 2: Oct 19-25, 2020

Slightly cooler to cooler than average surface air temperature will likely experience in most parts of the country is expected except in eastern and central Luzon, southern Visayas, Maguindanao, Sultan Kudarat and eastern Mindanao where average to slightly warmer temperature is more likely during the forecast period.

