



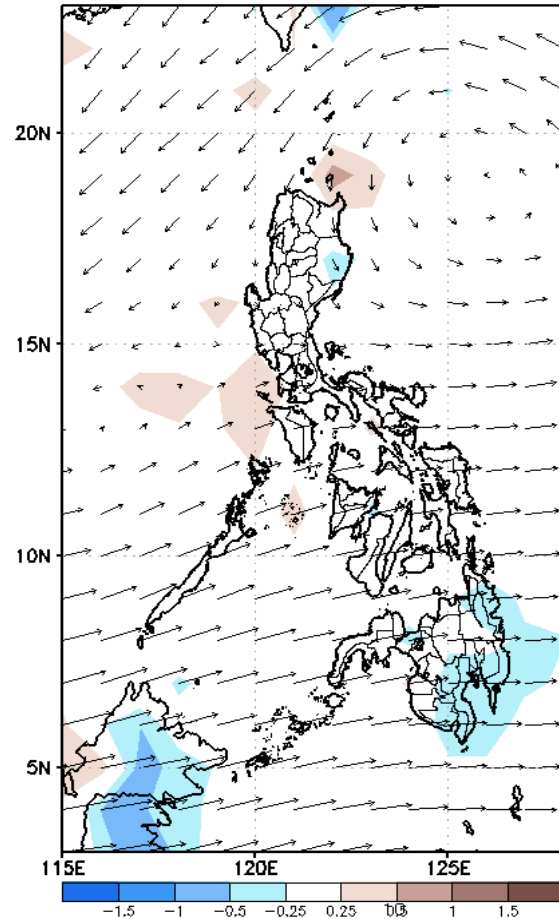
# Week 1 & Week 2 Forecast for the Philippines using GEFS Model



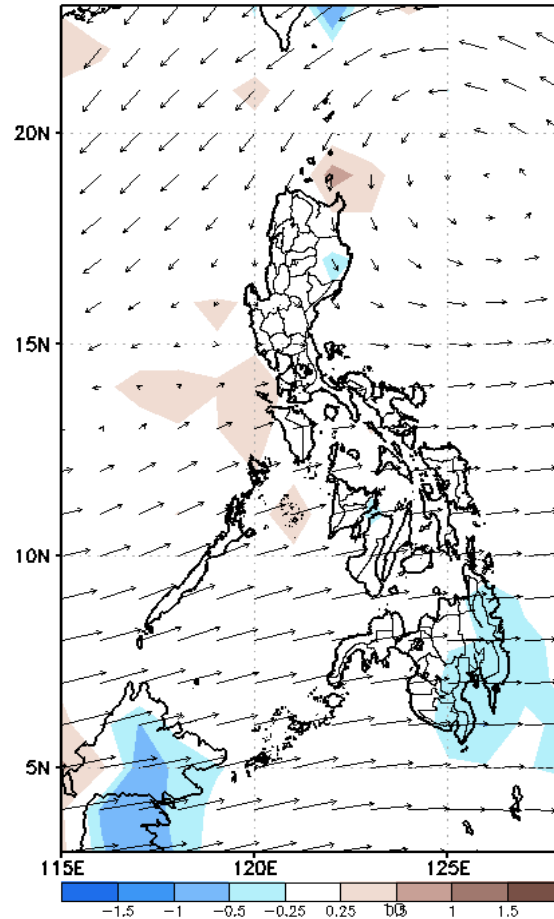
# GEFS Week-1 Forecasts: Wind Anomaly Forecast

Week 1: Oct 12 - Oct 18, 2022

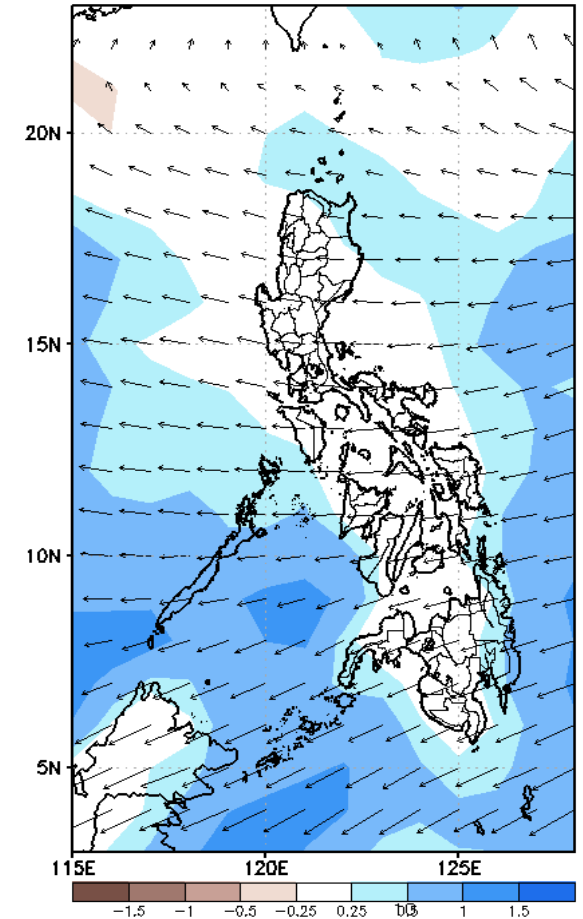
GEFS Week-1 850-hPa Divergence and Wind Anomaly  
Valid: 20221012 - 20221018



GEFS Week-1 700-hPa Divergence and Wind Anomaly  
Valid: 20221012 - 20221018



GEFS Week-1 200-hPa Divergence and Wind Anomaly  
Valid: 20221012 - 20221018

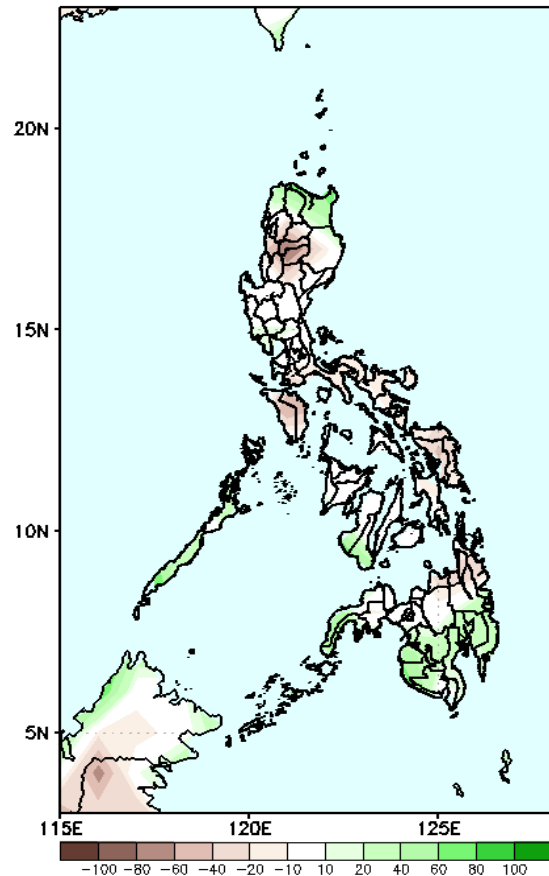


Westerlies affecting most of the country; Northeasterly windflow affecting some areas in Northern Luzon during the forecast period.

# Precipitation Anomaly and Exceedance Probability > 25/50 mm

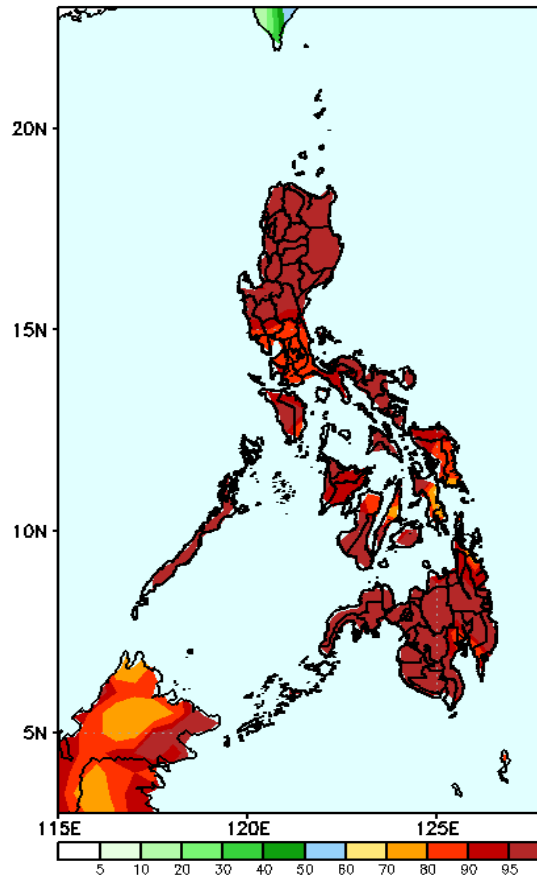
Week 1: Oct 12 - Oct 18, 2022

GEFS Week-1 Precip Anomaly  
Valid: 20221012 - 20221018



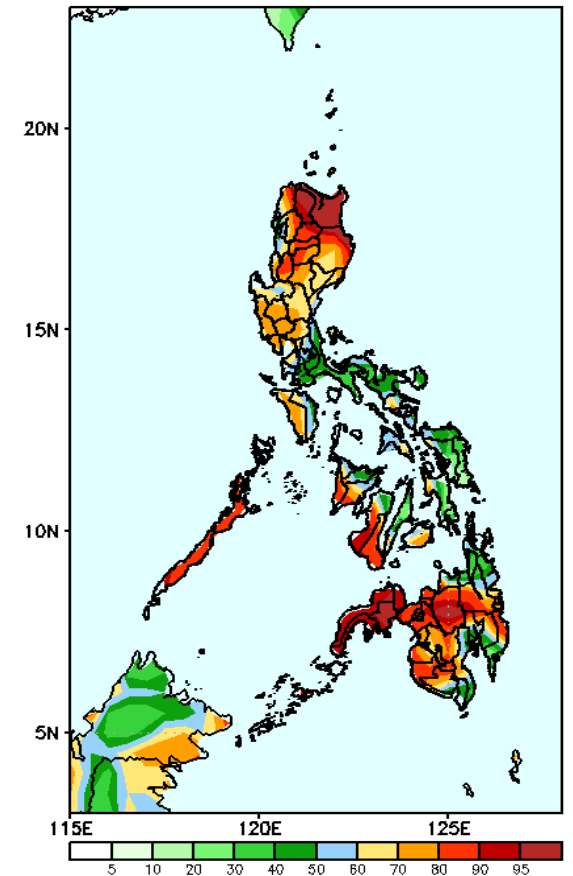
40 – 100mm rainfall deficit will be likely in most parts of Luzon, Eastern Visayas and CARAGA while rainfall increase of 40 – 80mm in extreme Ilocos, Apayao, Cagayan, Palawan, Negros provinces and most of Mindanao during the forecast period .

GEFS Week-1 Exceedance Prob. > 25mm  
Valid: 20221012 - 20221018



High probability of rainfall to exceed 25mm in most parts of the country except in most areas of western Luzon during the forecast period.

GEFS Week-1 Exceedance Prob. > 50mm  
Valid: 20221012 - 20221018



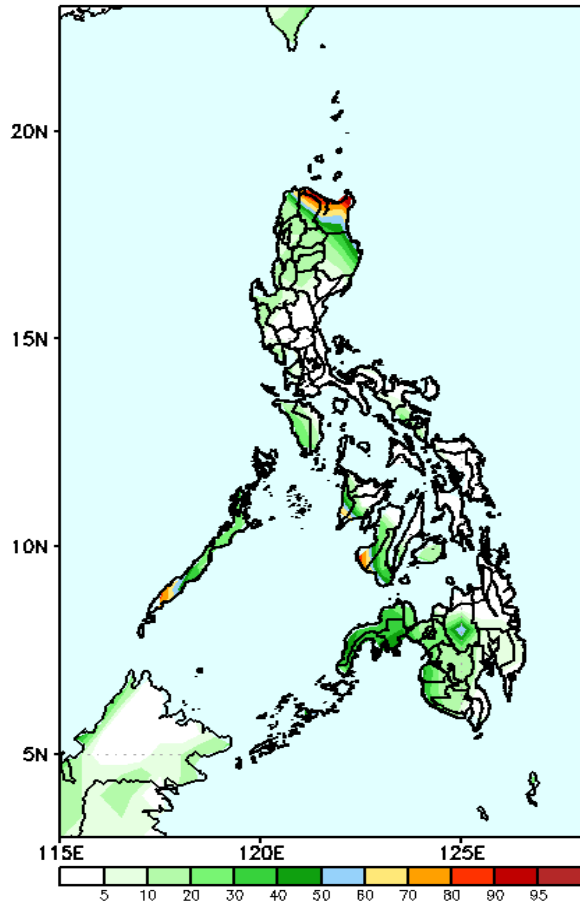
High probability of rainfall to exceed 50mm in most parts of the country except Batangas, Quezon, Bicol region and Eastern Visayas during the forecast period.



# Exceedance Probability > 100/150/200 mm

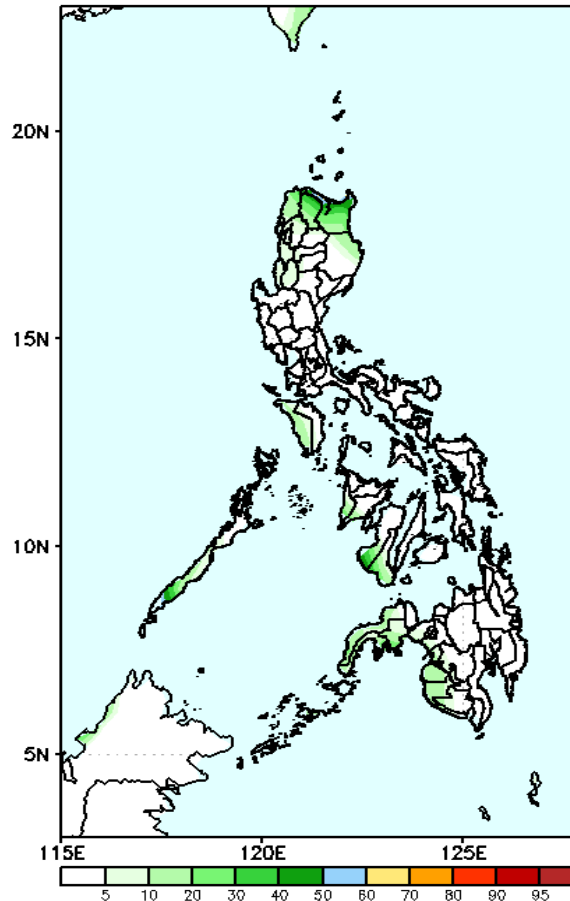
Week 1: Oct 12 - Oct 18, 2022

GEFS Week-1 Exceedance Prob. > 100mm  
Valid: 20221012 - 20221018



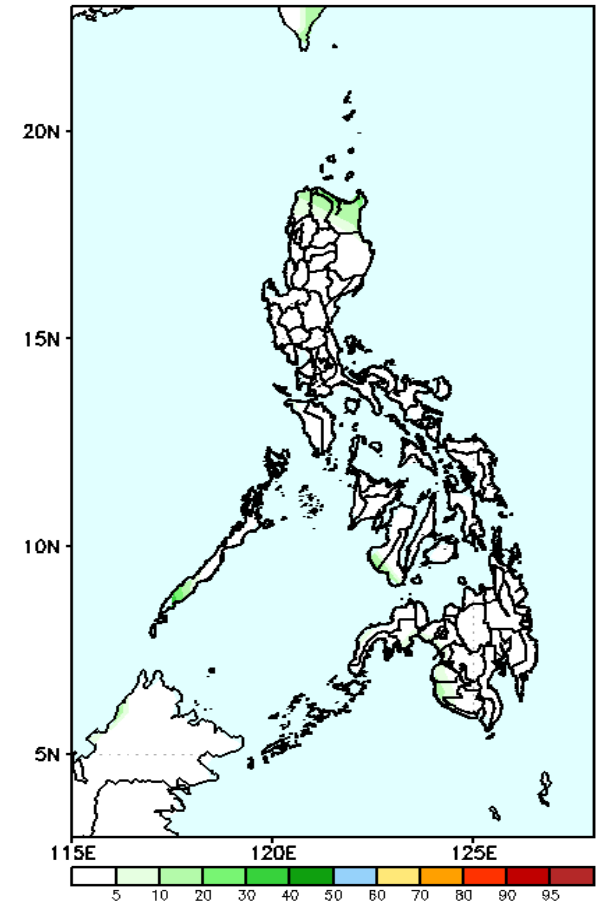
High probability of rainfall to exceed 100mm in Ilocos Norte, Apayao Kalinga, Cagayan and some parts of Abra and Isabela while less likely for the rest of Luzon during the forecast period.

GEFS Week-1 Exceedance Prob. > 150mm  
Valid: 20221012 - 20221018



Low probability of rainfall to exceed 150mm in most parts of the country during the forecast period.

GEFS Week-1 Exceedance Prob. > 200mm  
Valid: 20221012 - 20221018

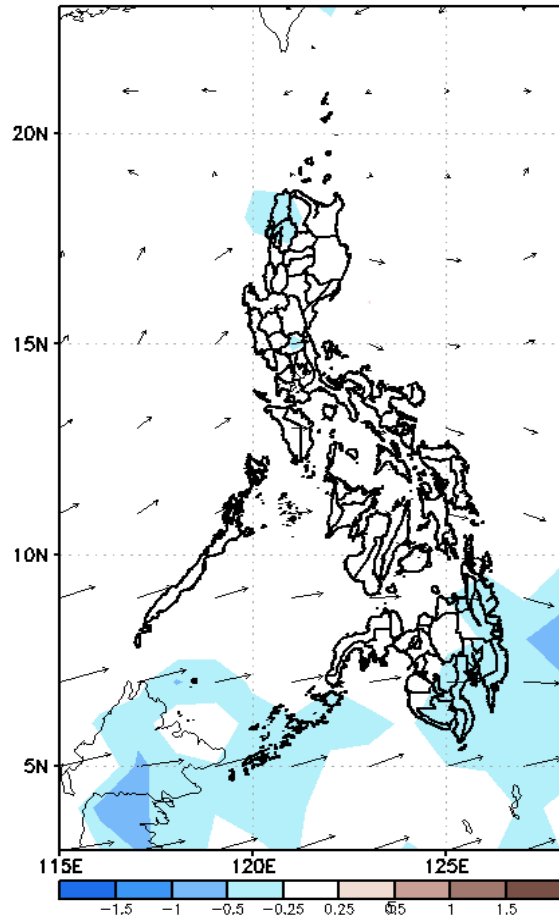


Low probability of rainfall to exceed 200mm in most parts of the country during the forecast period.

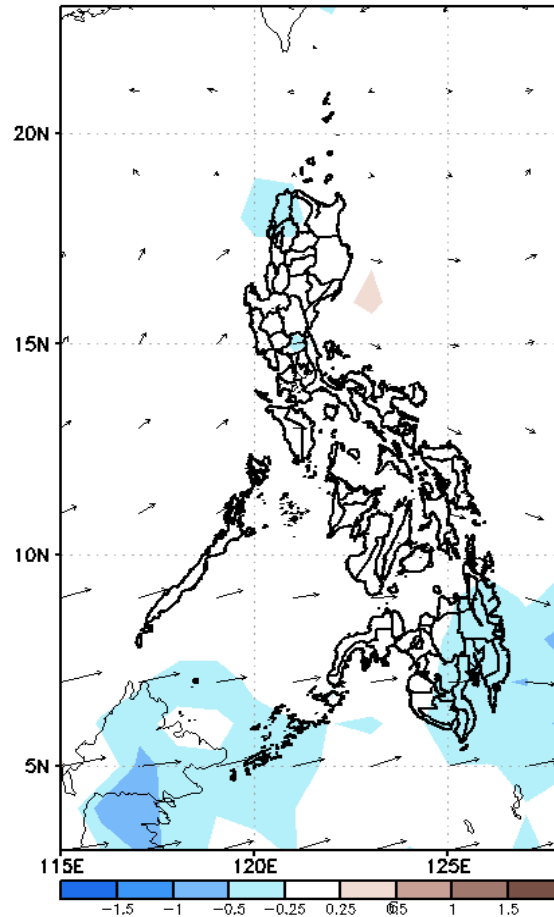
# GEFS Week-2 Forecasts: Wind Anomaly Forecast

Week 2: Oct 19 - Oct 25, 2022

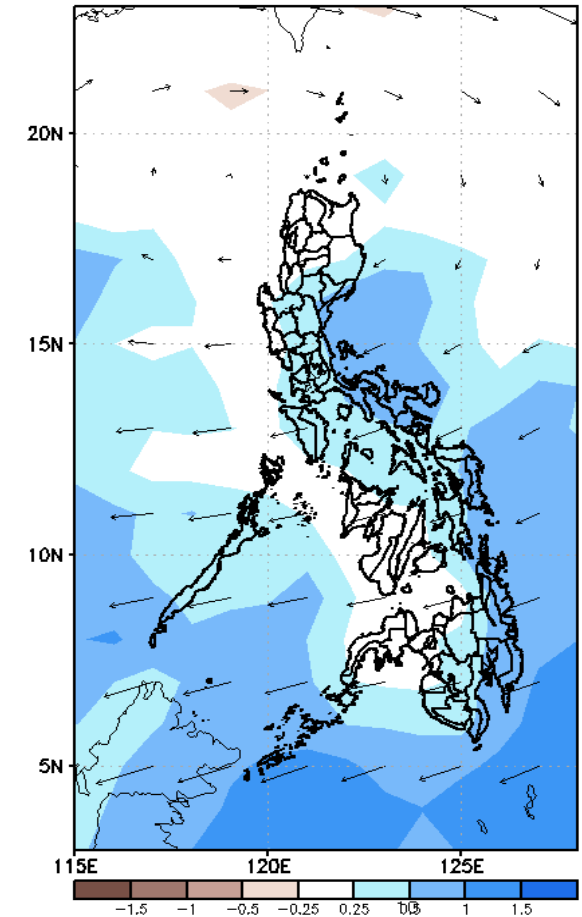
GEFS Week-2 850-hPa Divergence and Wind Anomaly  
Valid: 20221019 - 20221025



GEFS Week-2 700-hPa Divergence and Wind Anomaly  
Valid: 20221019 - 20221025



GEFS week-2 200-hPa Divergence and Wind Anomaly  
Valid: 20221019 - 20221025

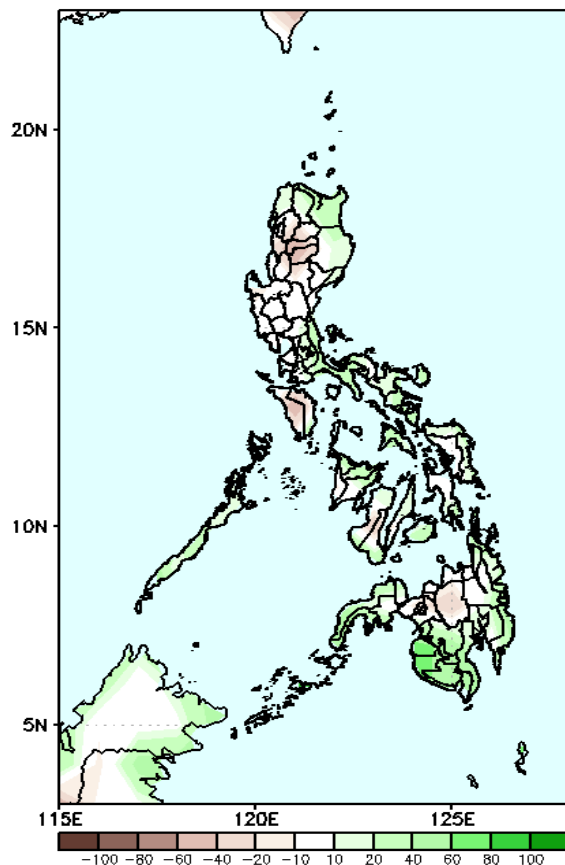


Westerly to Southwesterly winds affecting most of the country during the forecast period.

# Precipitation Anomaly and Exceedance Probability > 25/50 mm

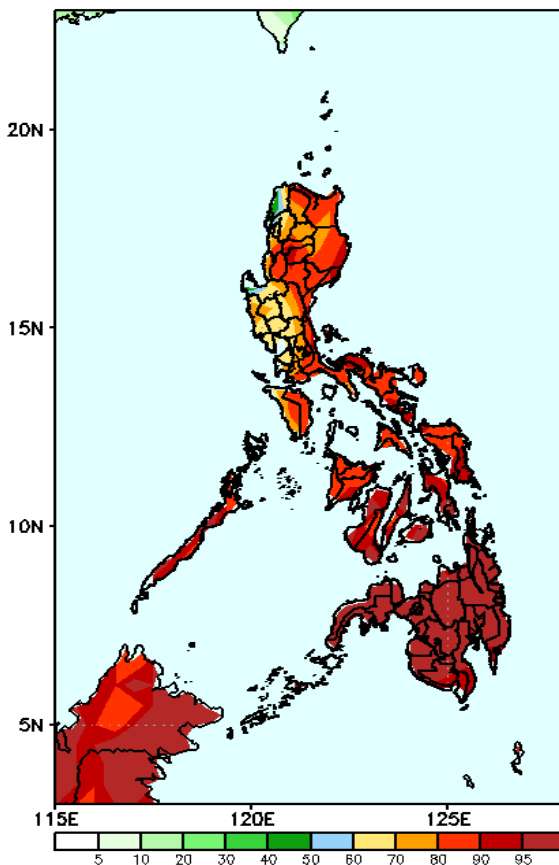
Week 2: Oct 19 - Oct 25, 2022

GEFS Week-2 Precip Anomaly  
Valid: 20221019 - 20221025



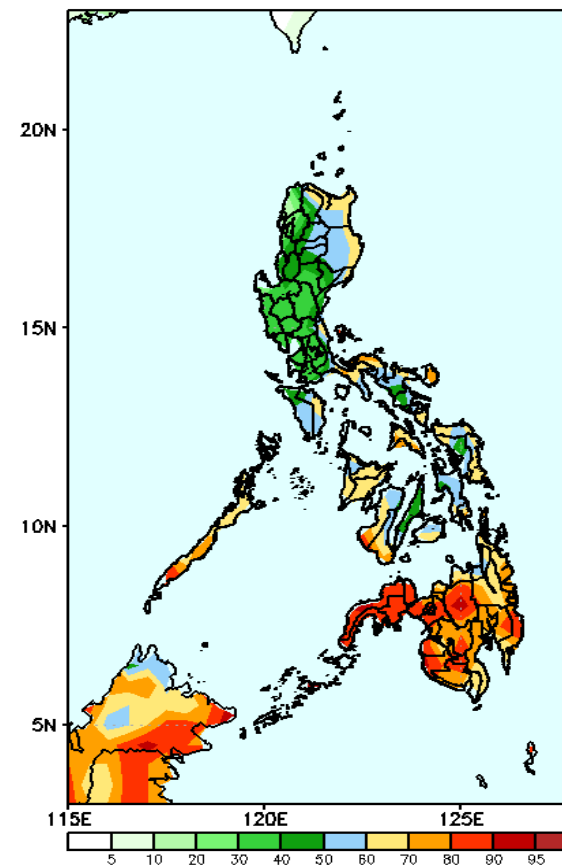
20-80mm increase of rainfall will be likely in most parts of the country except in some parts of CAR, Mindoro provinces, and Northern Mindanao where rainfall deficit of 20 - 60mm is expected during the forecast period.

GEFS Week-2 Exceedance Prob. > 25mm  
Valid: 20221019 - 20221025



High probability of rainfall to exceed 25mm in most parts of the country during the forecast period.

GEFS Week-2 Exceedance Prob. > 50mm  
Valid: 20221019 - 20221025

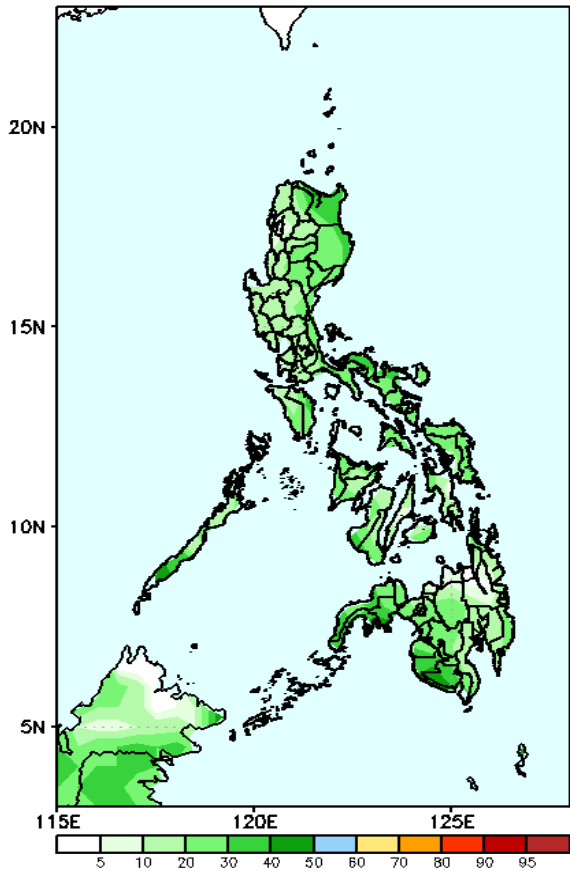


High probability of rainfall to exceed 50mm in most parts of the country except Ilocos region, most parts of Central Luzon and CALABARZON during the forecast period.

# Exceedance Probability > 100/150/200 mm

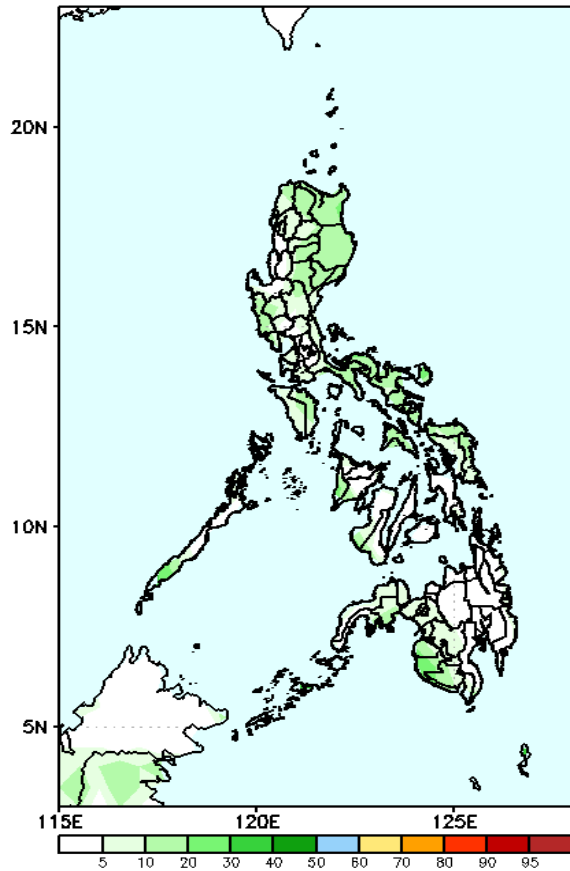
Week 2: Oct 19 - Oct 25, 2022

GEFS Week-2 Exceedance Prob. > 100mm  
Valid: 20221019 - 20221025



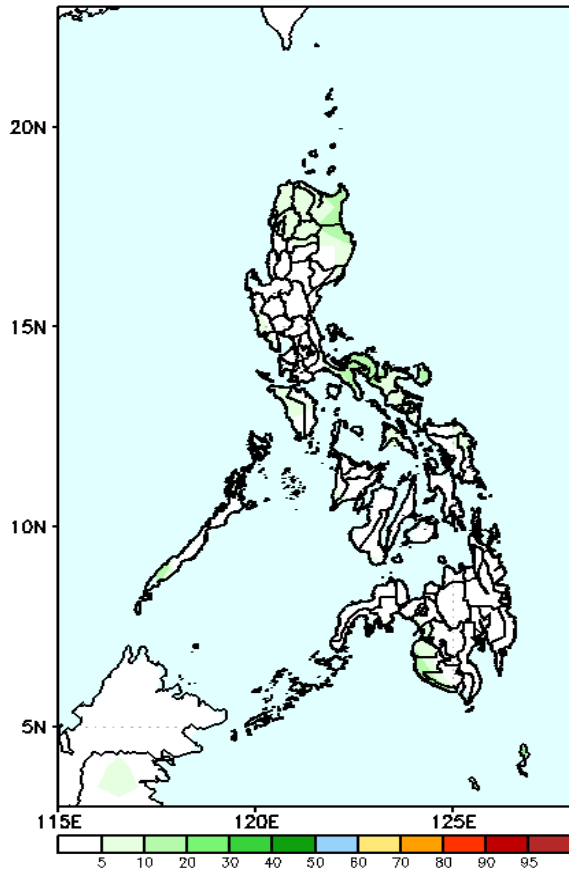
Low probability of rainfall to exceed 100mm in most parts of the country during the forecast period.

GEFS Week-2 Exceedance Prob. > 150mm  
Valid: 20221019 - 20221025



Low probability of rainfall to exceed 150mm in most parts of the country during the forecast period.

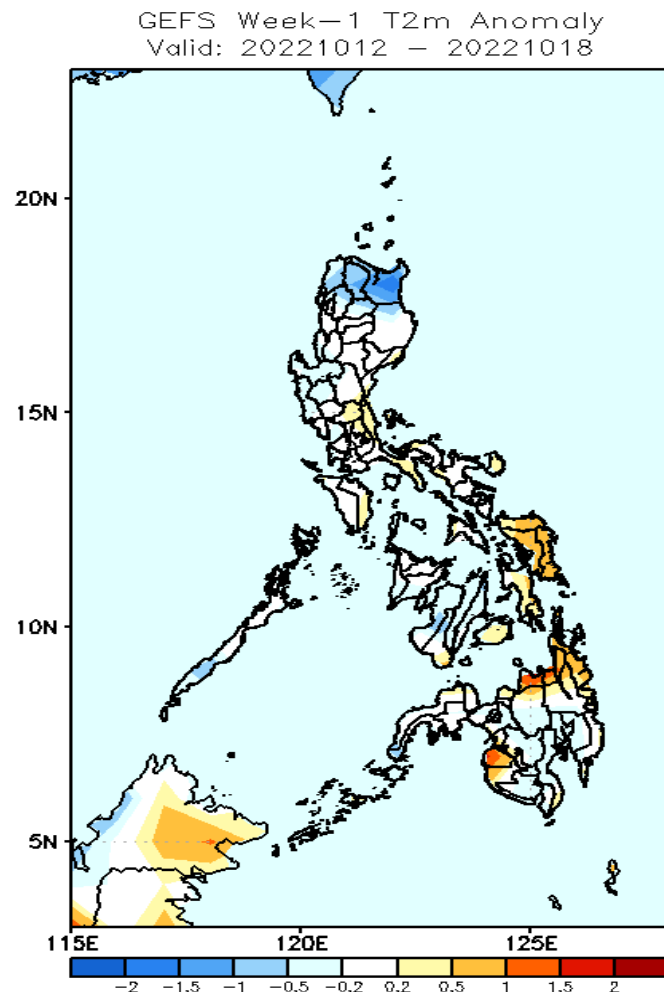
GEFS Week-2 Exceedance Prob. > 200mm  
Valid: 20221019 - 20221025



Low probability of rainfall to exceed 200mm in most parts of the country during the forecast period.

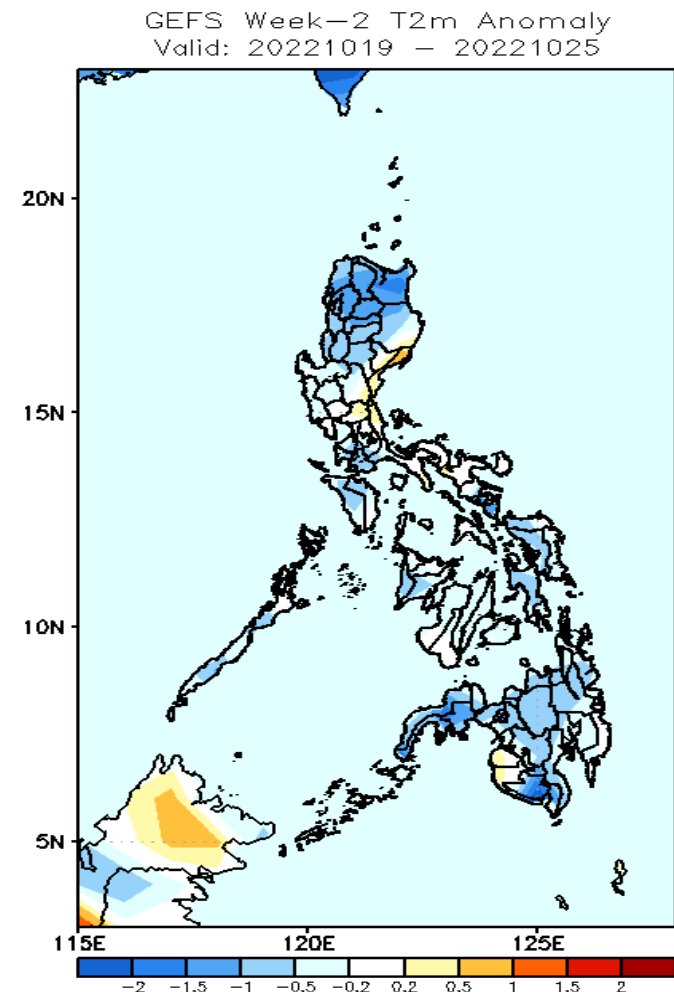


# GEFS Week-1 & 2 Forecasts: T2m Anomaly



## 2m Temperature Week 1: Oct 12 - Oct 18, 2022

Average to warmer than average surface air temperature will likely experience in most parts of the country except in some parts of Northern and Central Luzon, Palawan, Western Visayas and some parts of Central Mindanao where slightly cooler to cooler than average surface air temperature will be likely during the forecast period.



## 2m Temperature Week 2: Oct 19 - Oct 25, 2022

Slightly cooler to cooler than average surface air temperature will likely experience in most parts of the country except in some parts of Aurora, Bulacan, some parts of Quezon, Maguindanao and Sultan Kudarat where near to warmer than average surface air temperature will be likely during the forecast period.