



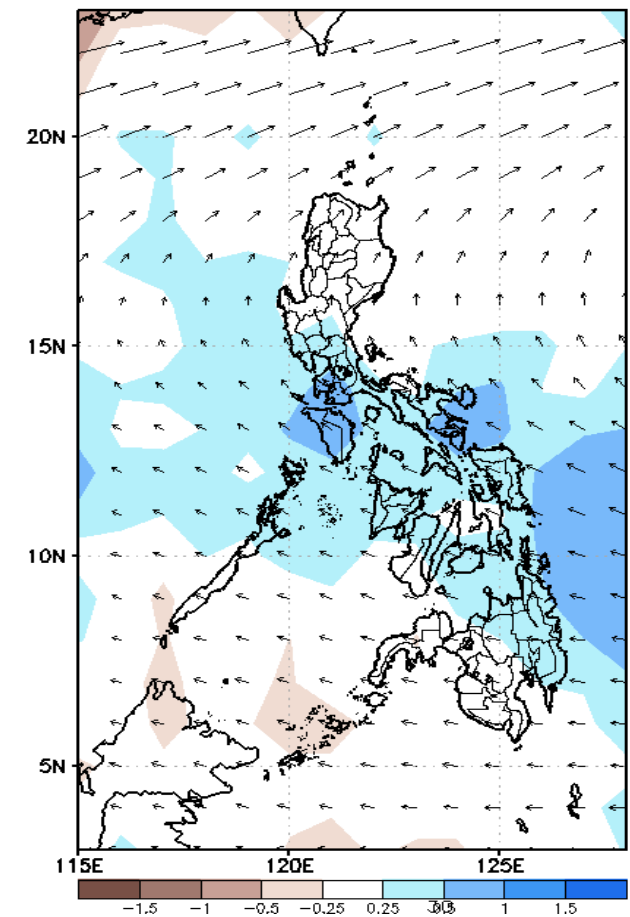
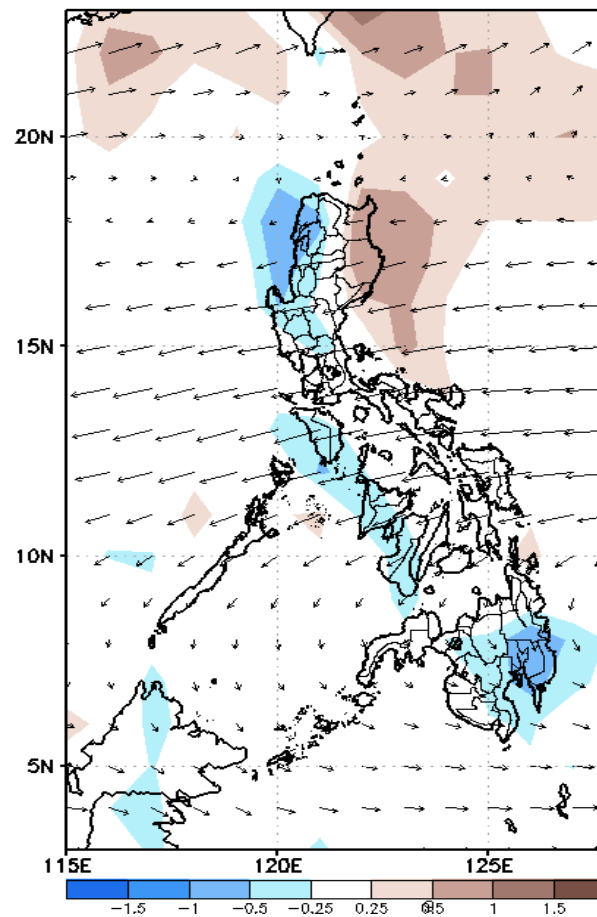
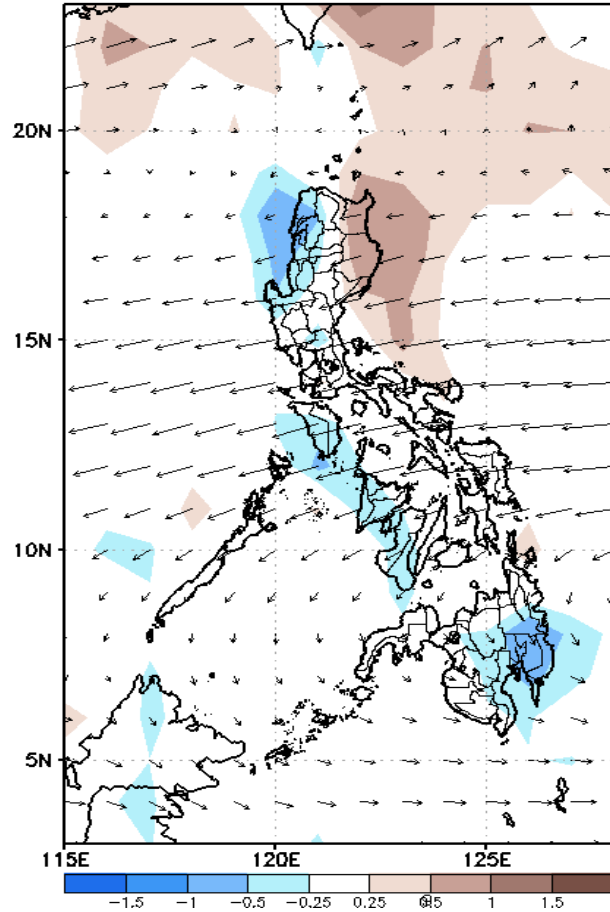
Week 1 & Week 2 Forecast for the Philippines using GEFS Model



GEFS Week-1 Forecasts: Divergence & Wind Anomaly

Week 1: Dec 13-19, 2021

GEFS Week-1 850-hPa Divergence and Wind Anomaly Valid: 20211213 - 20211219
GEFS Week-1 700-hPa Divergence and Wind Anomaly Valid: 20211213 - 20211219
GEFS Week-1 200-hPa Divergence and Wind Anomaly Valid: 20211213 - 20211219

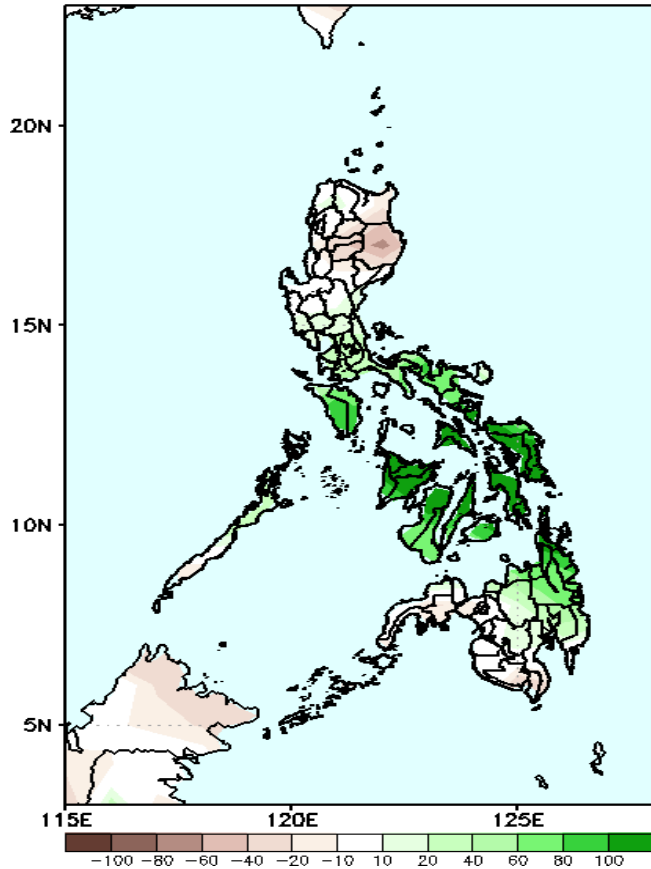


Upper and low level Divergence suggest likelihood of light to moderate precipitation in Central and Southern Luzon, most of Visayas and Northern and eastern Mindanao. Northeast Monsoon affecting the eastern sections of Luzon while Easterlies affecting the rest of the country during the forecast period.

Precipitation Anomaly and Exceedance Probability > 25/50 mm

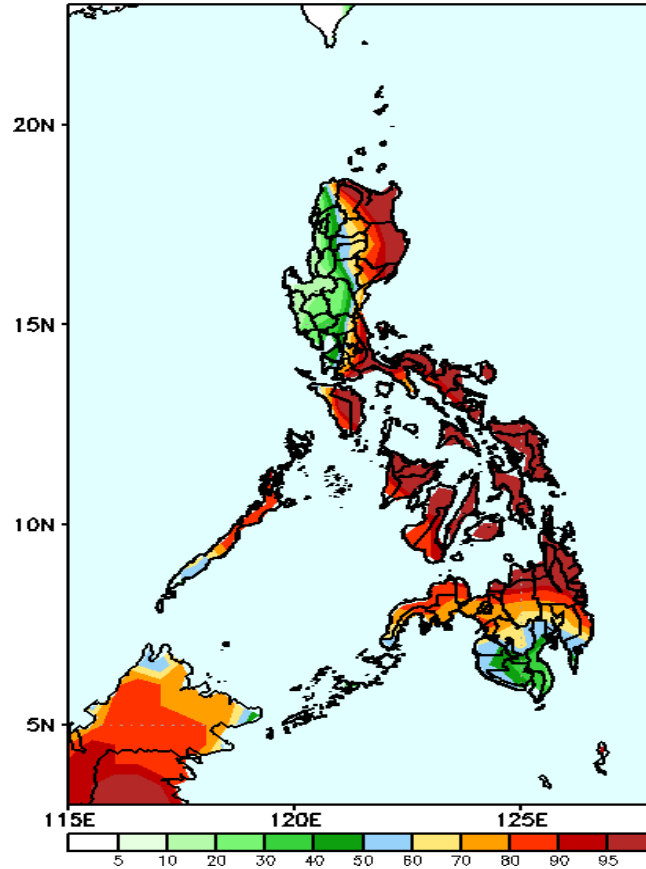
Week 1: Dec 13-19, 2021

GEFS Week-1 Precip Anomaly
Valid: 20211213 - 20211219



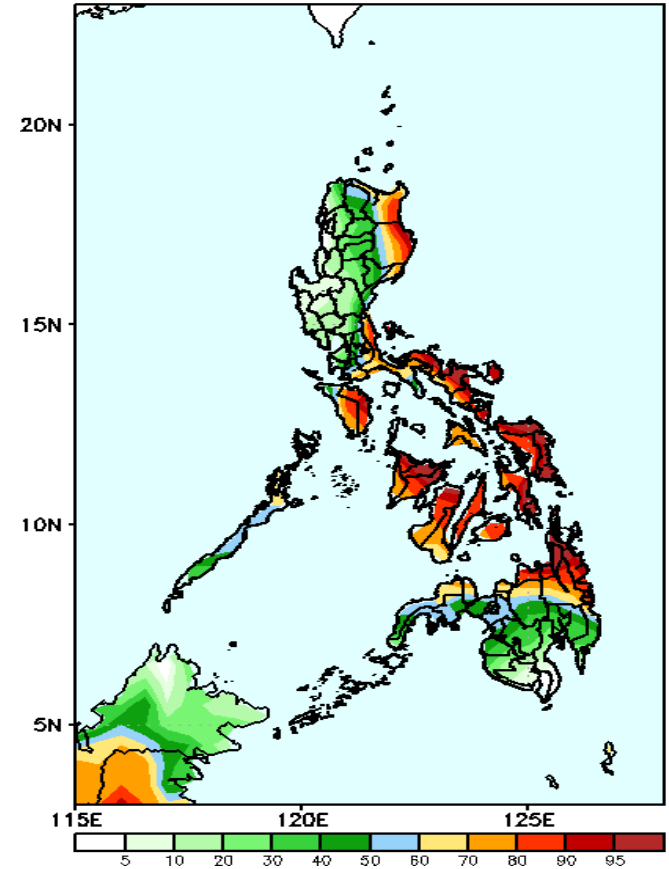
Increase of rainfall of 60-100mm is expected in most parts of the country except in Isabela during the forecast period

GEFS Week-1 Exceedance Prob. > 25mm
Valid: 20211213 - 20211219



High probability of rainfall to exceed 25mm in most parts of the country is expected except in the western section of Luzon during the forecast period.

GEFS Week-1 Exceedance Prob. > 50mm
Valid: 20211213 - 20211219

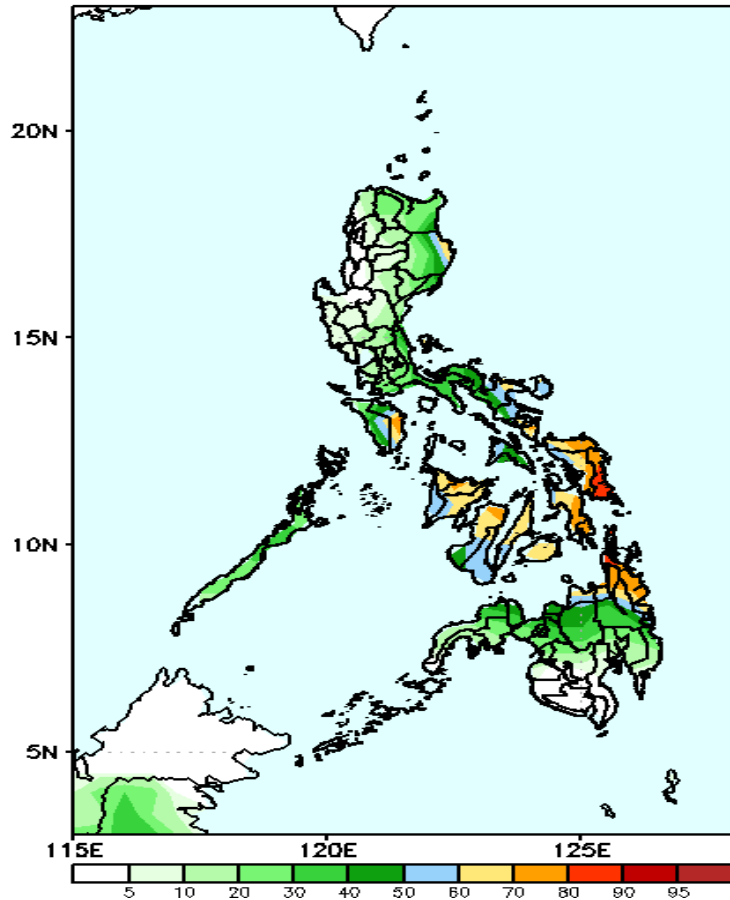


High probability of rainfall to exceed 50mm in Cagayan, Isabela, Mindoro, most parts of CALABARZON, Bicol Region, Visayas and Northern Mindanao while less likely for the rest of the country during the forecast period.

Exceedance Probability > 100/150/200 mm

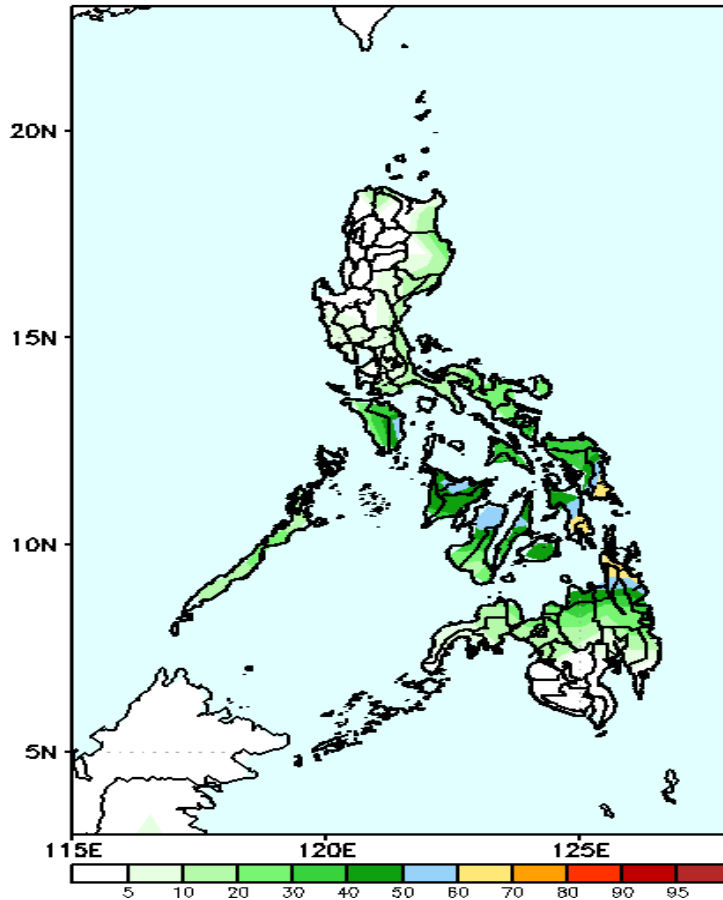
Week 1: Dec 13-19, 2021

GEFS Week-1 Exceedance Prob. > 100mm
Valid: 20211213 - 20211219



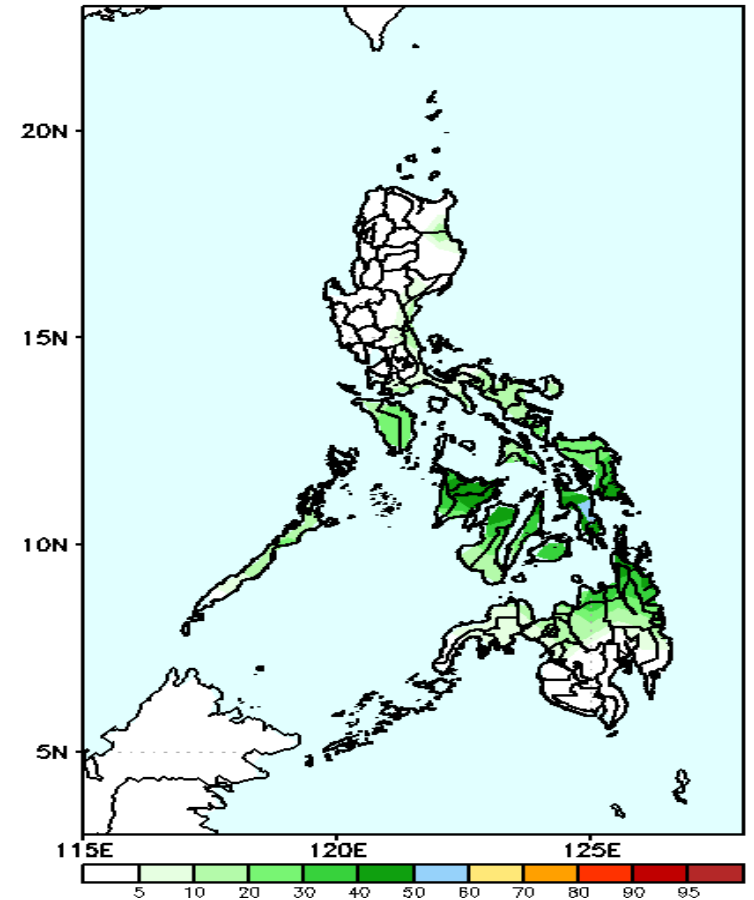
70-90% probability of rainfall to exceed 100mm in most parts of Visayas and CARAGA Region while less likely for the rest of the country during the forecast period.

GEFS Week-1 Exceedance Prob. > 150mm
Valid: 20211213 - 20211219



Less probability of rainfall to exceed 150mm in most parts of the country is expected during the forecast period.

GEFS Week-1 Exceedance Prob. > 200mm
Valid: 20211213 - 20211219



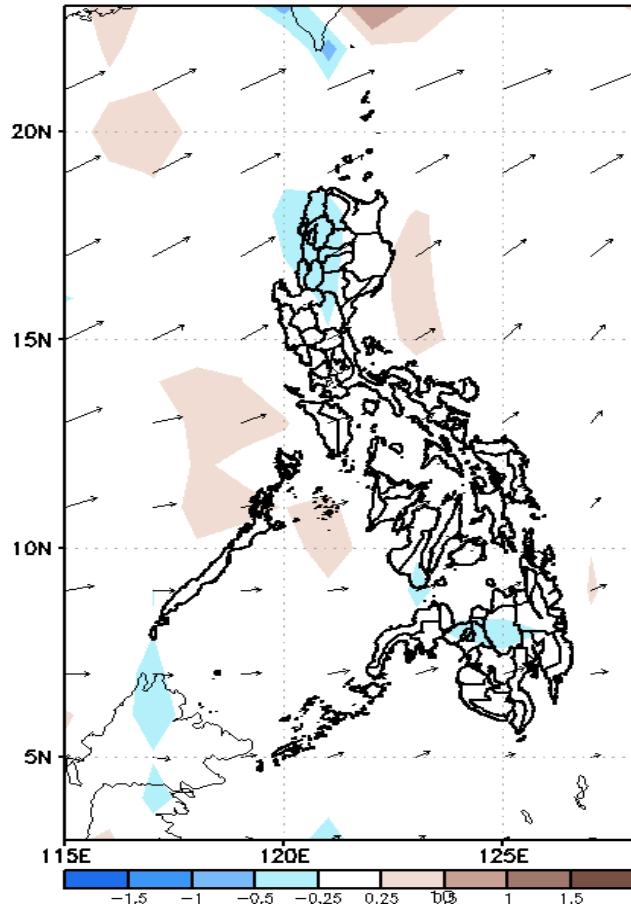
Less probability of rainfall to exceed 200mm in most parts of the country is expected during the forecast period.



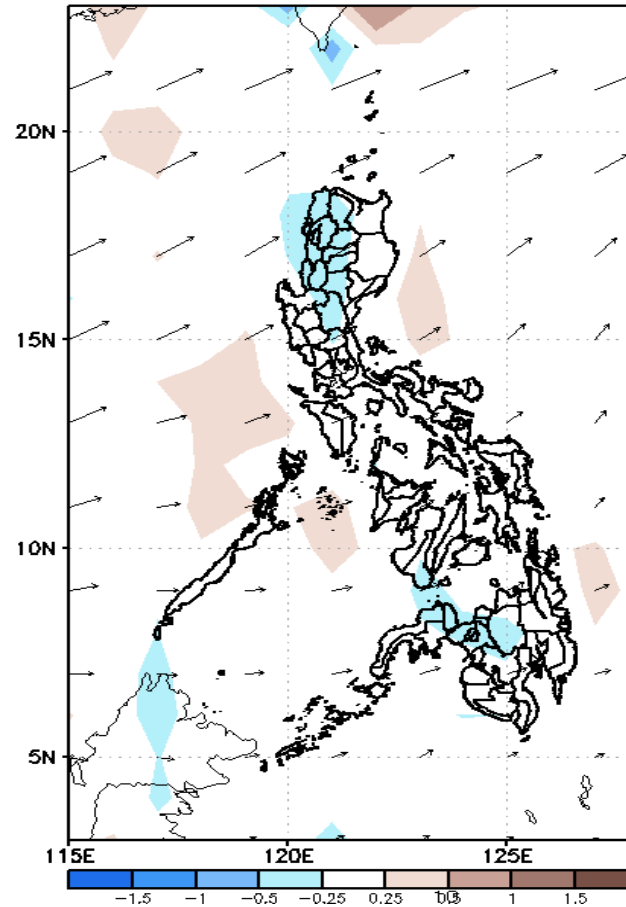
GEFS Week-2 Forecasts: Divergence & Wind Anomaly

Week 2: Dec 20-26, 2021

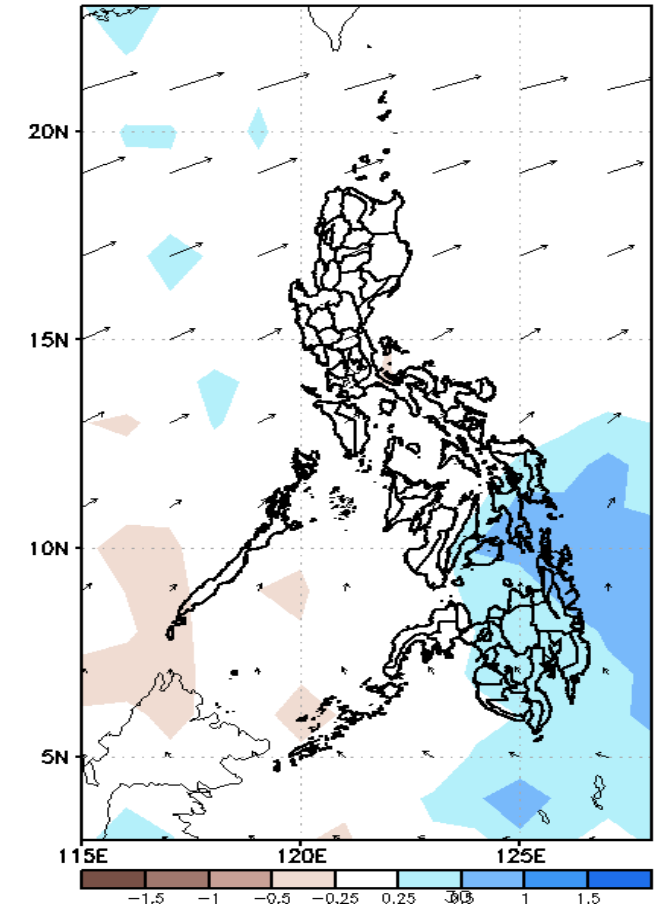
GEFS Week-2 850-hPa Divergence and Wind Anomaly
Valid: 20211220 - 20211226



GEFS Week-2 700-hPa Divergence and Wind Anomaly
Valid: 20211220 - 20211226



GEFS week-2 200-hPa Divergence and Wind Anomaly
Valid: 20211220 - 20211226

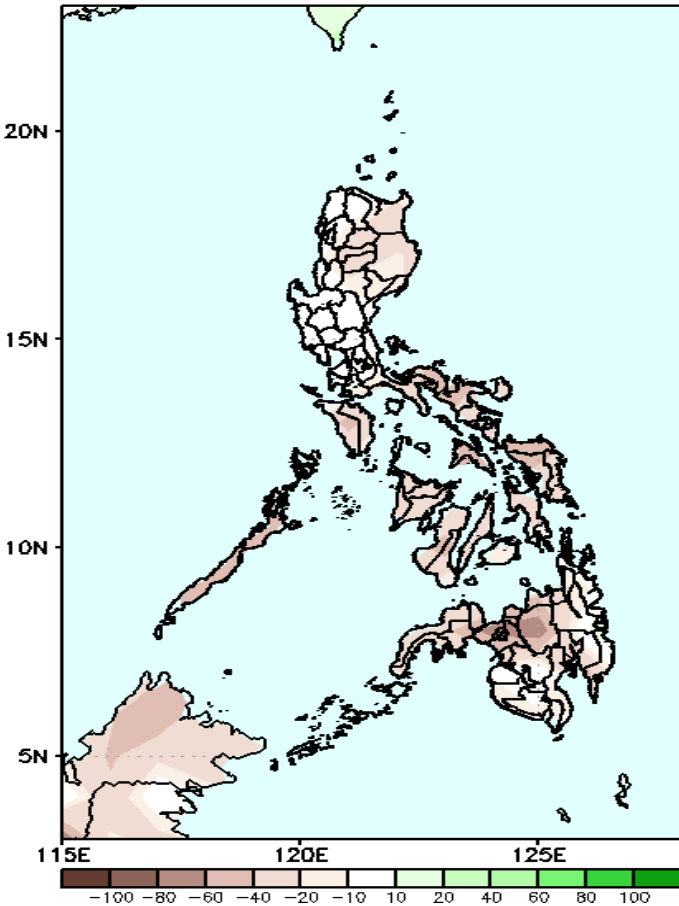


Upper and low level Divergence suggest likelihood of light to moderate precipitation in Central and Eastern Visayas and most parts of Mindanao. Easterlies affecting most parts of the country during the forecast period.

Precipitation Anomaly and Exceedance Probability > 25/50 mm

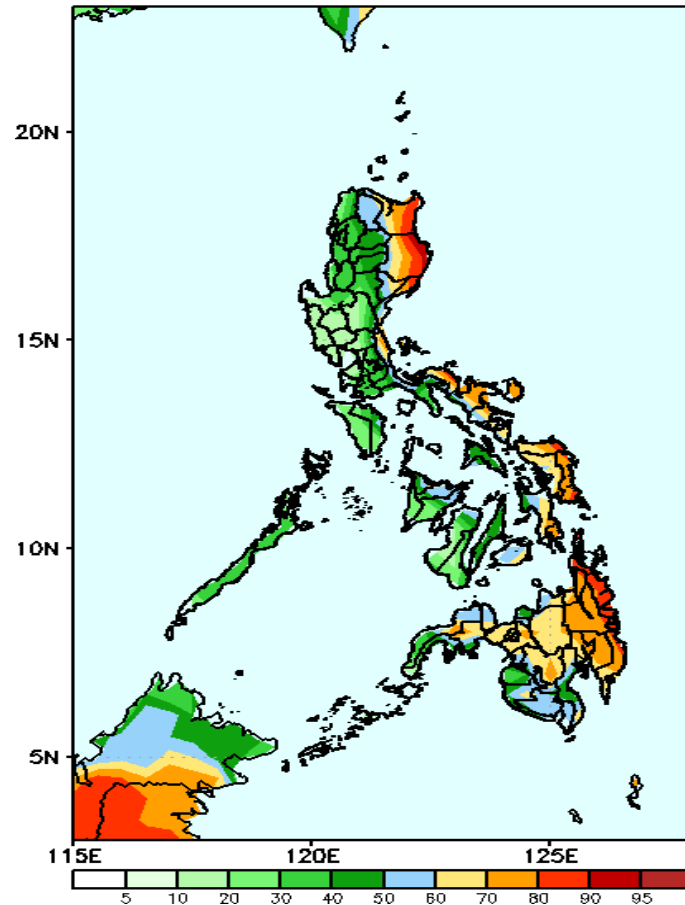
Week 2: Dec 20-26, 2021

GEFS Week-2 Precip Anomaly
Valid: 20211220 - 20211226



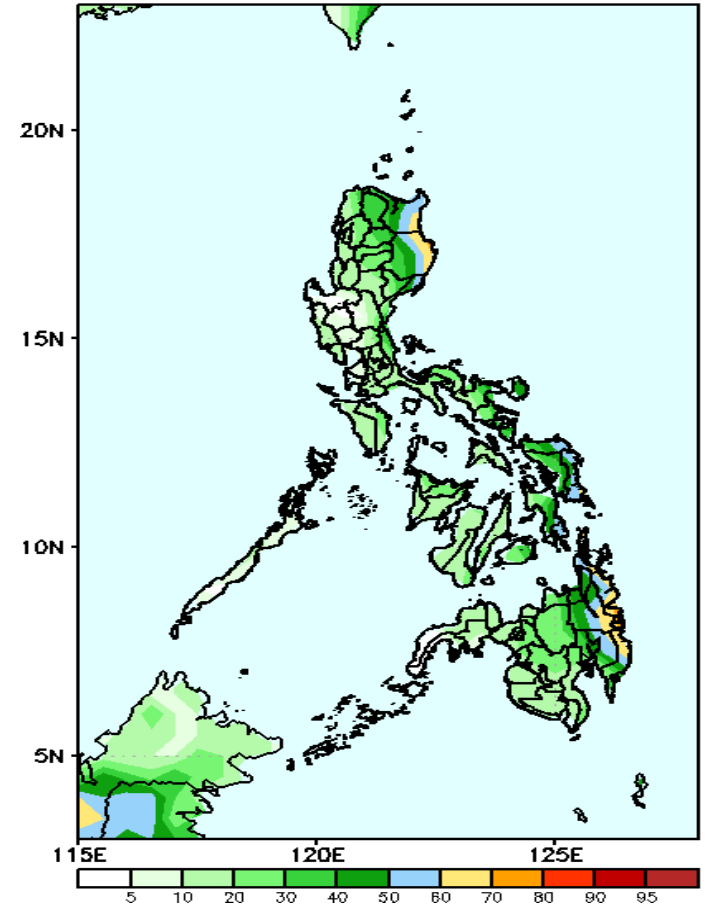
Rainfall deficit of 40-100mm is expected in most parts of the country during the forecast period.

GEFS Week-2 Exceedance Prob. > 25mm
Valid: 20211220 - 20211226



High probability of rainfall to exceed 25mm in Cagayan, Isabela, Mindoro, most parts of CALABARZON, Bicol Region, Eastern Visayas and most parts of Mindanao while less likely for the rest of the country during the forecast period.

GEFS Week-2 Exceedance Prob. > 50mm
Valid: 20211220 - 20211226



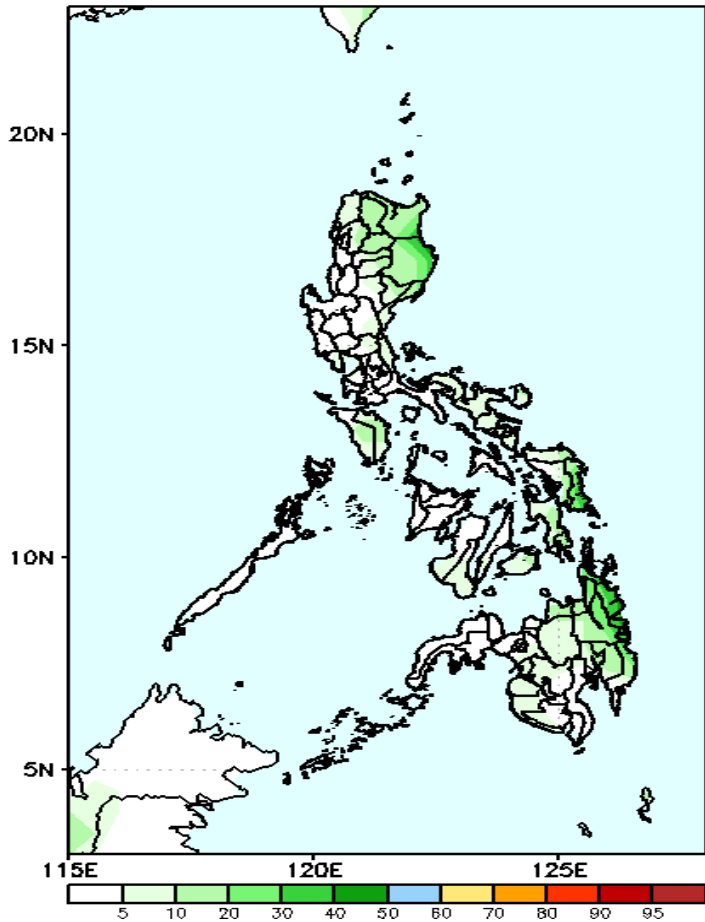
Less probability of rainfall to exceed 200mm in most parts of the country is expected during the forecast period.



Exceedance Probability > 100/150/200 mm

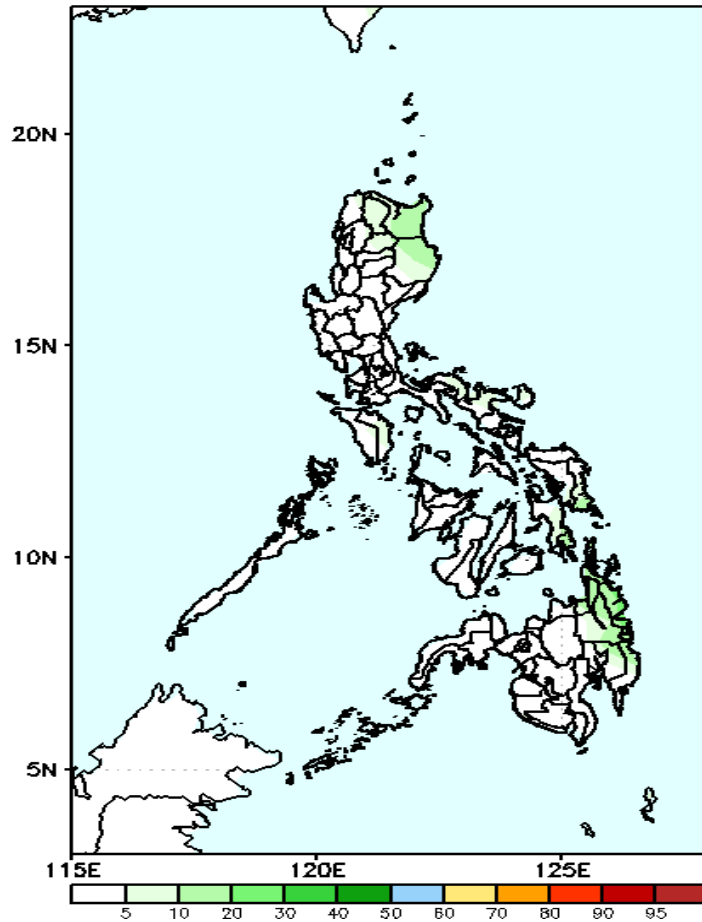
Week 2: Dec 20-26, 2021

GEFS Week-2 Exceedance Prob. > 100mm
Valid: 20211220 - 20211226



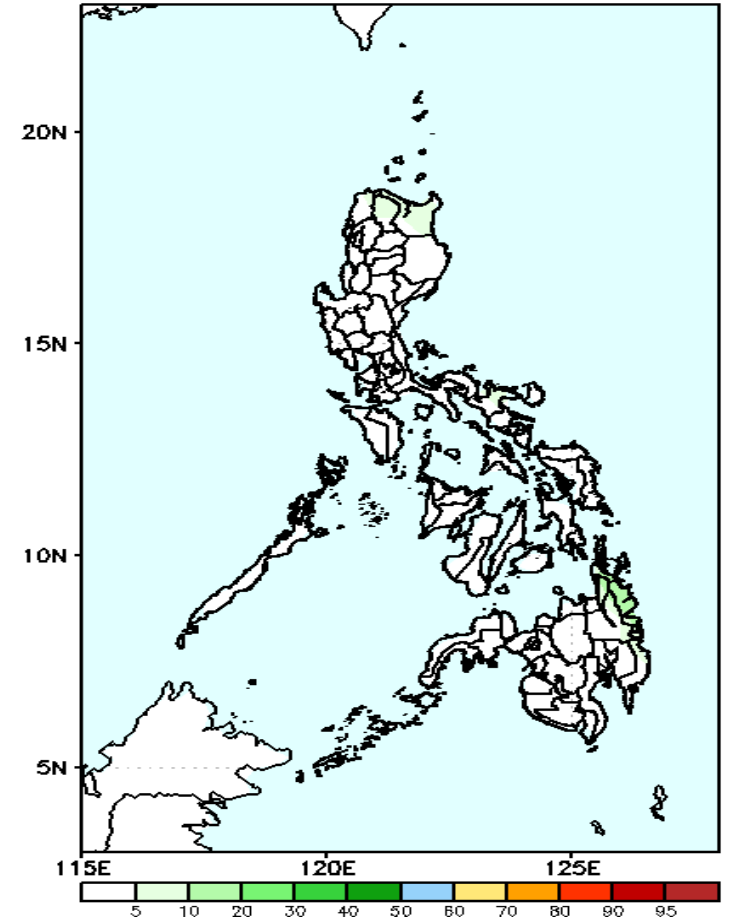
Less probability of rainfall to exceed 100mm in most parts of the country is expected during the forecast period.

GEFS Week-2 Exceedance Prob. > 150mm
Valid: 20211220 - 20211226



Less probability of rainfall to exceed 150mm in most parts of the country is expected during the forecast period.

GEFS Week-2 Exceedance Prob. > 200mm
Valid: 20211220 - 20211226

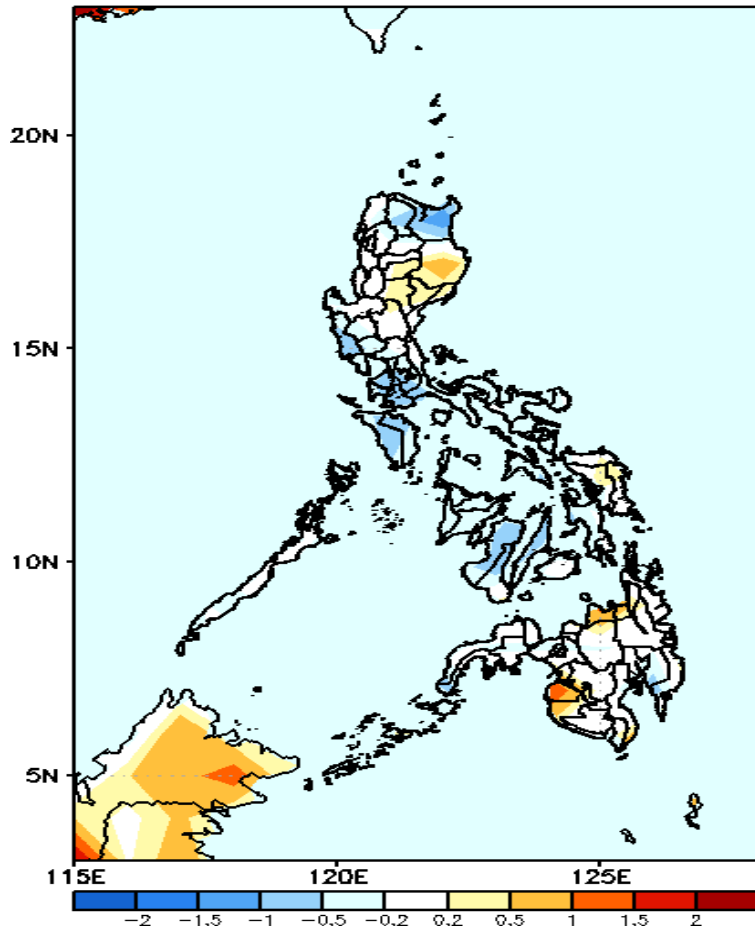


Less probability of rainfall to exceed 200mm in most parts of the country is expected during the forecast period.



GEFS Week-1 & 2 Forecasts: T2m Anomaly

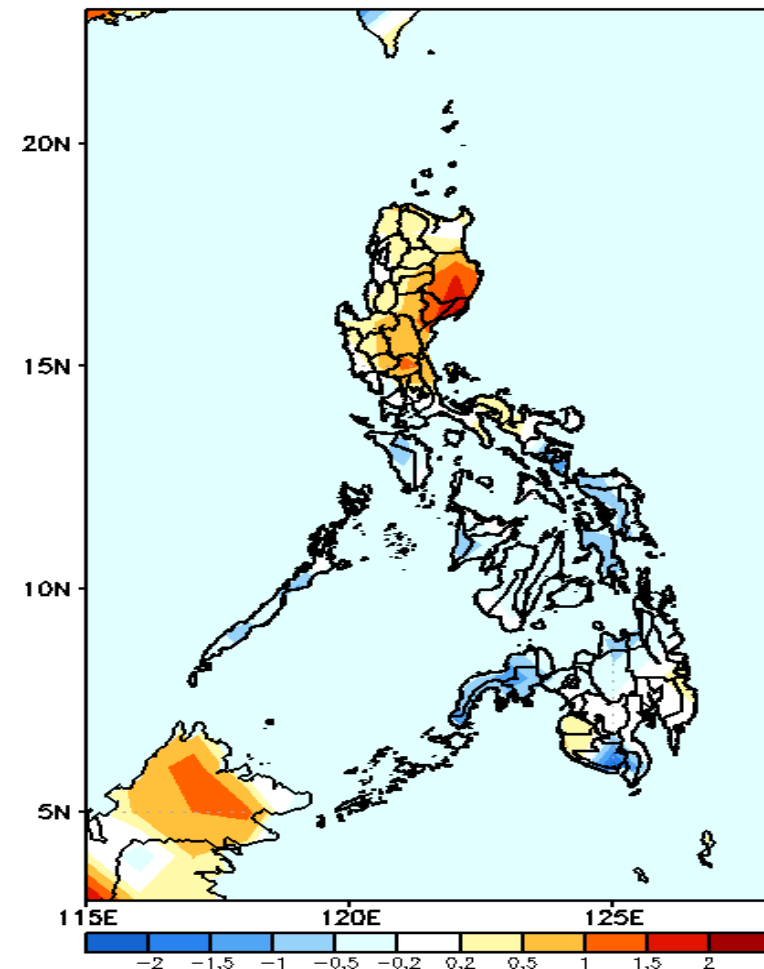
GEFS Week-1 T2m Anomaly
Valid: 20211213 - 20211219



2m Temperature Week 1: Dec 13-19, 2021

Average to slightly cooler than average surface air temperature will likely experience in most parts of the country except in some areas in Cagayan Valley, Eastern Visayas, Misamis Oriental, Maguindanao & Sultan Kudarat where slightly warmer temperature is expected during the forecast period.

GEFS Week-2 T2m Anomaly
Valid: 20211220 - 20211226



2m Temperature Week 2: Dec 20-26, 2021

Slightly warmer to warmer than average surface air temperature will likely experience in most parts of eastern Luzon while average to slightly cooler temperature for the rest of the country during the forecast period.