



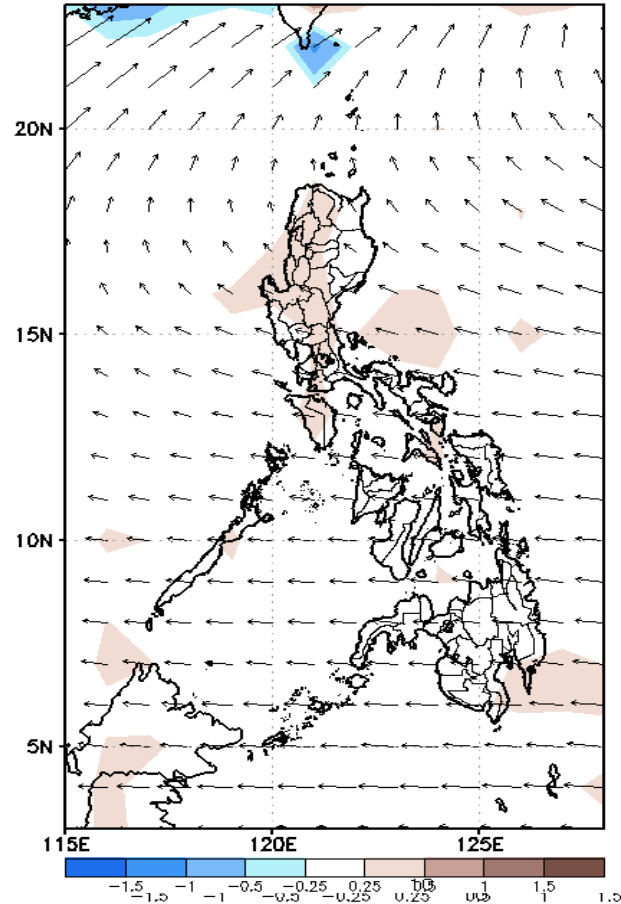
Week 1 & Week 2 Forecast for the Philippines using GEFS Model



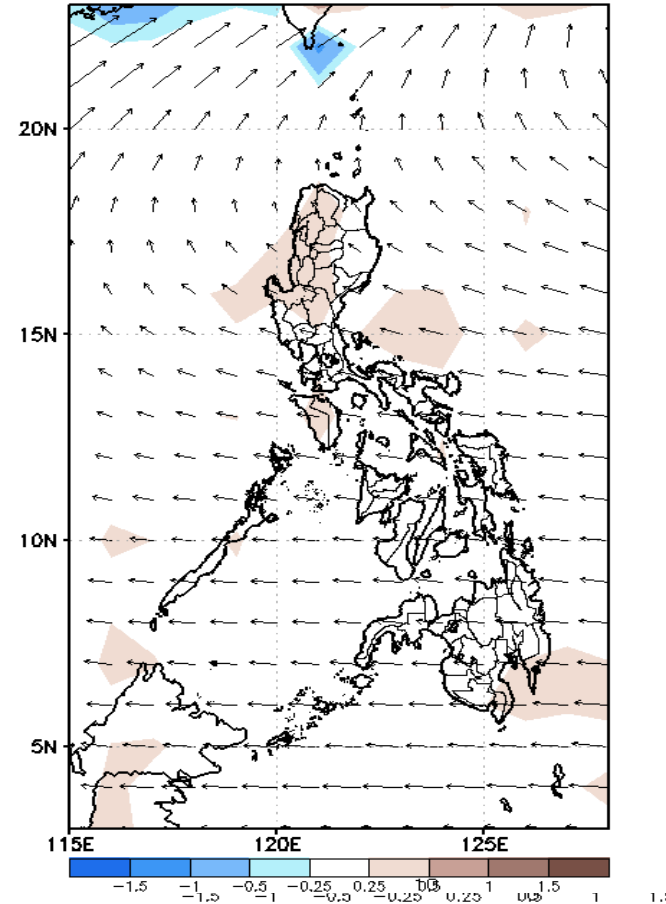
GEFS Week-1 Forecasts: Wind Anomaly Forecast

Week 1 Jun 13-19, 2022

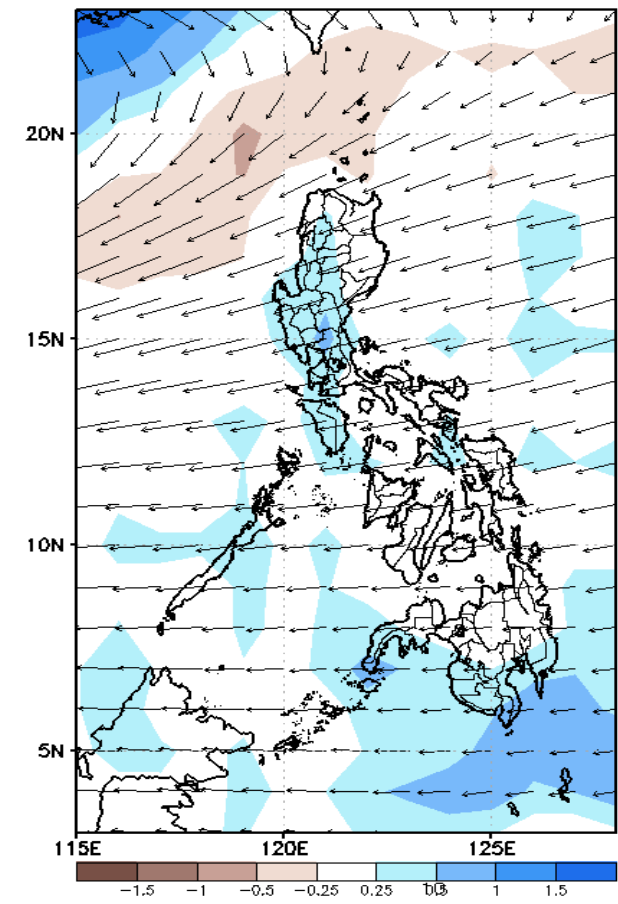
GEFS Week-1 850-hPa Divergence and Wind Anom
Valid: 20220613 - 20220619



GEFS Week-1 700-hPa Divergence and Wind Anomc
Valid: 20220613 - 20220619



GEFS Week-1 200-hPa Divergence and Wind Anomc
Valid: 20220613 - 20220619

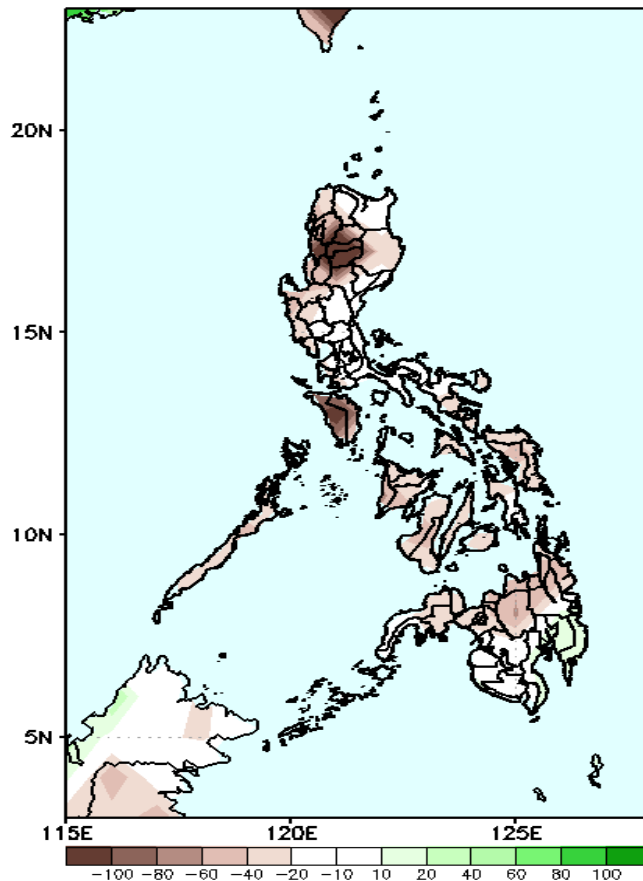


Easterlies affecting most parts of the country attributing to high likelihood of localized thunderstorms in most parts of the country during the forecast period

Precipitation Anomaly and Exceedance Probability > 25/50 mm

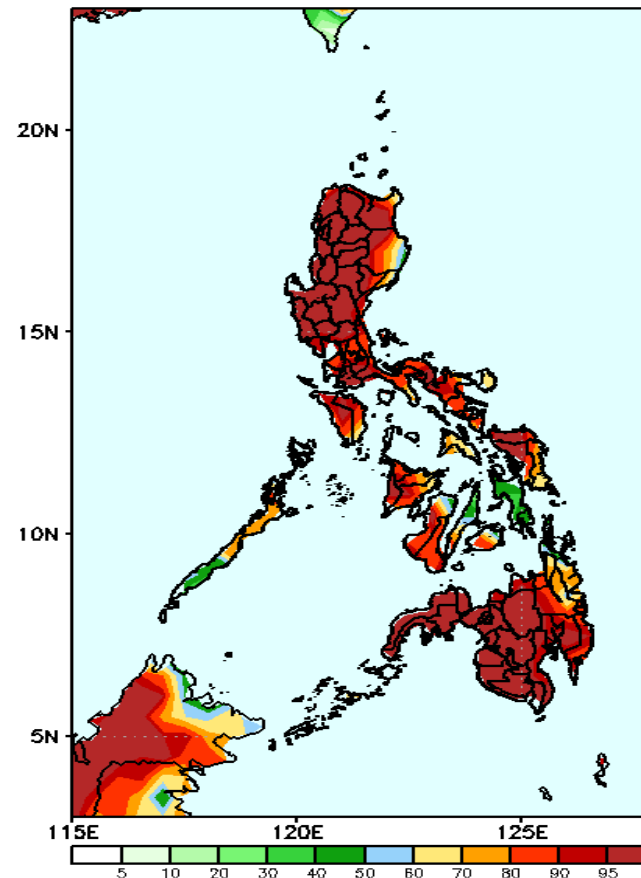
Week 1: Jun 13-19, 2022

GEFS Week-1 Precip Anomaly
Valid: 20220613 - 20220619



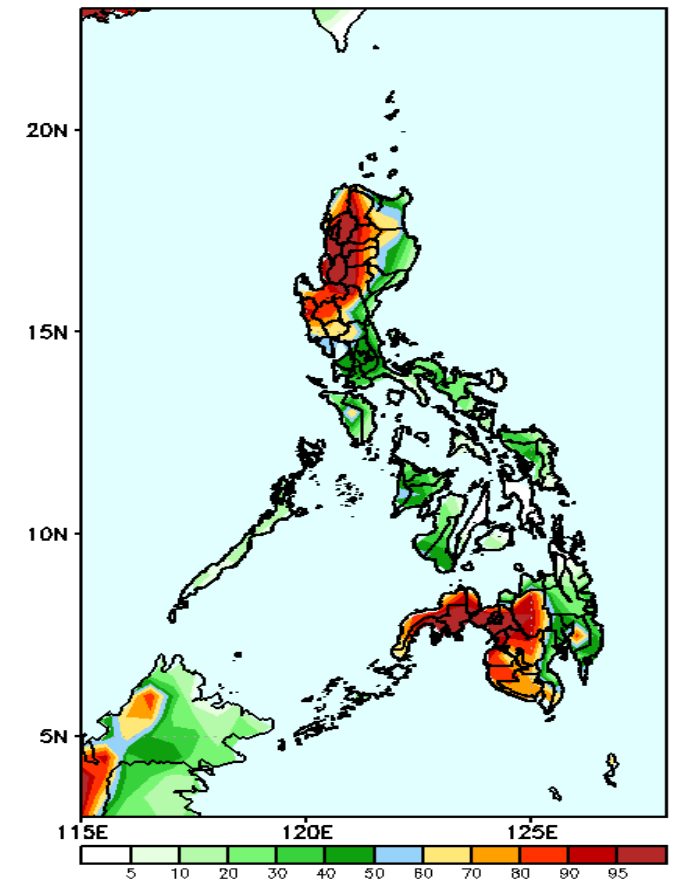
Rainfall deficit of more than 100mm is expected in Cordillera Region & Mindoro and 40-100mm for the rest of the country during the forecast period.

GEFS Week-1 Exceedance Prob. > 25mm
Valid: 20220613 - 20220619



High probability of rainfall to exceed 25mm in most parts of the country during the forecast period.

GEFS Week-1 Exceedance Prob. > 50mm
Valid: 20220613 - 20220619

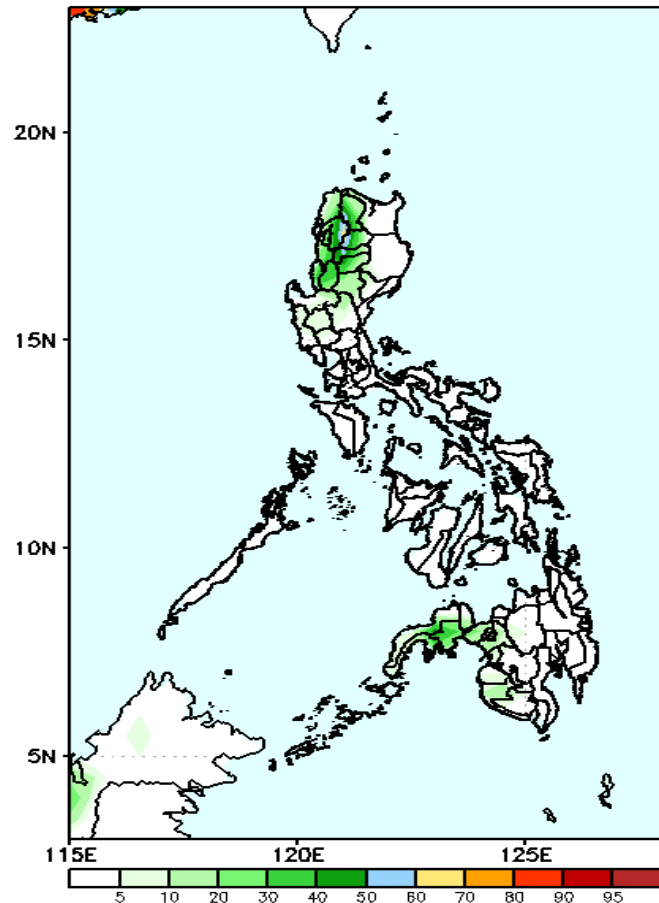


High probability of rainfall to exceed 50mm in most parts of Ilocos & Cordillera Region, western parts of Visayas and Mindanao while less likely for the rest the country during the forecast period.

Exceedance Probability > 100/150/200 mm

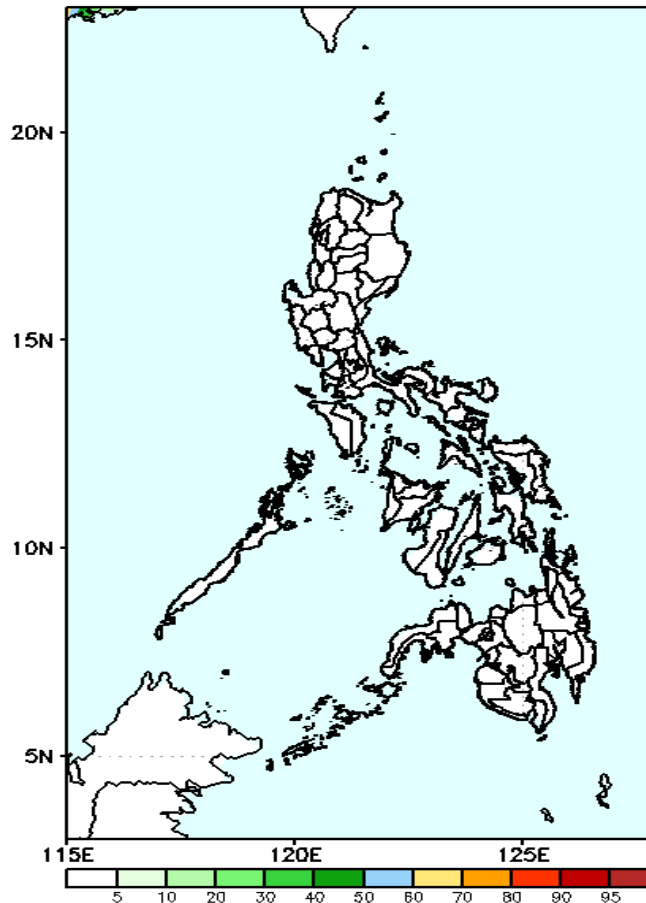
Week 1: Jun 13-19, 2022

GEFS Week-1 Exceedance Prob. > 100mm
Valid: 20220613 - 20220619



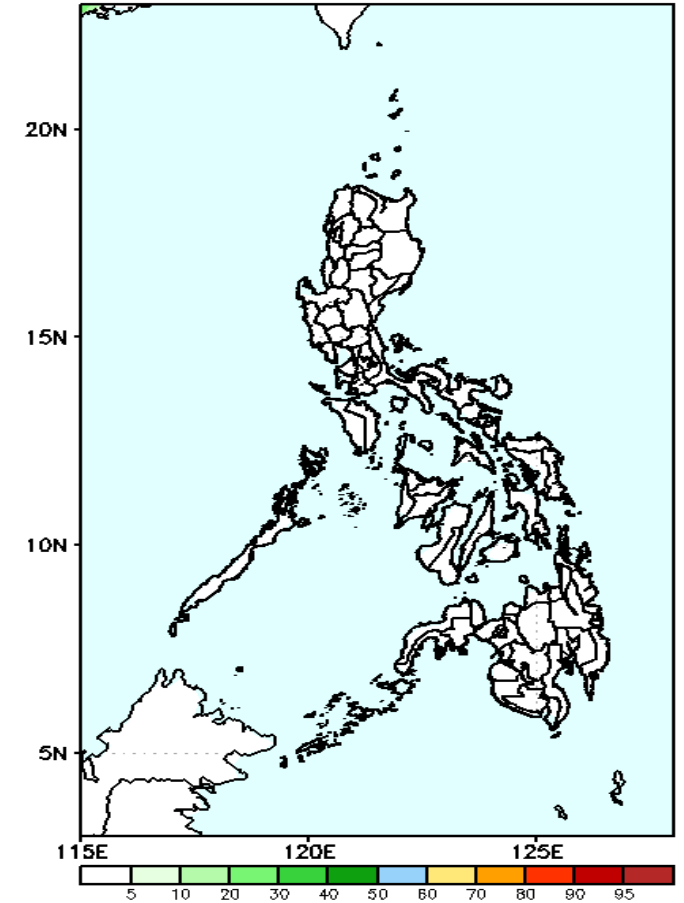
Low probability of rainfall to exceed 100mm in most parts of the country during the forecast period.

GEFS Week-1 Exceedance Prob. > 150mm
Valid: 20220613 - 20220619



Low probability of rainfall to exceed 150mm in most parts of the country during the forecast period.

GEFS Week-1 Exceedance Prob. > 200mm
Valid: 20220613 - 20220619



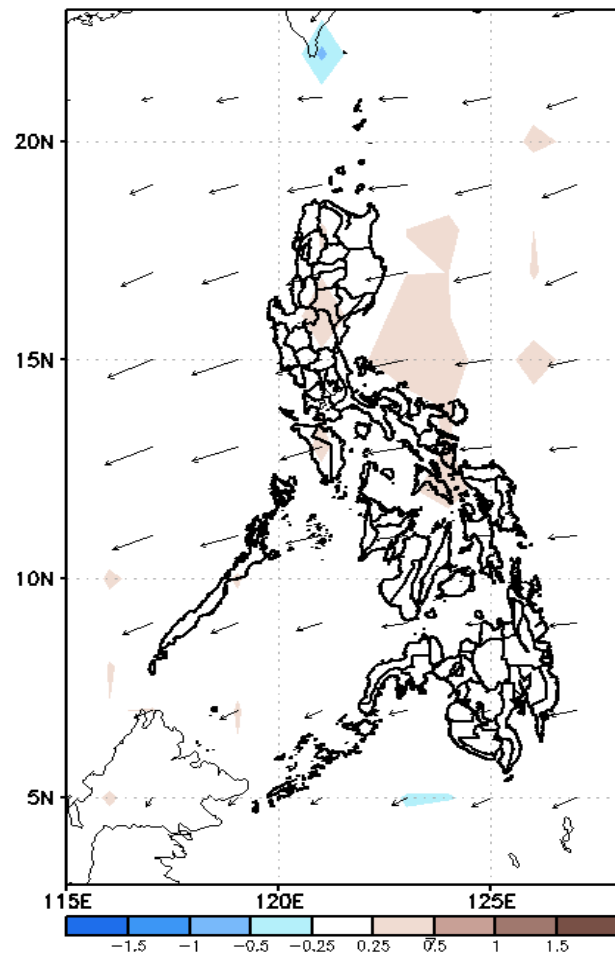
Low probability of rainfall to exceed 200mm in most parts of the country during the forecast period.



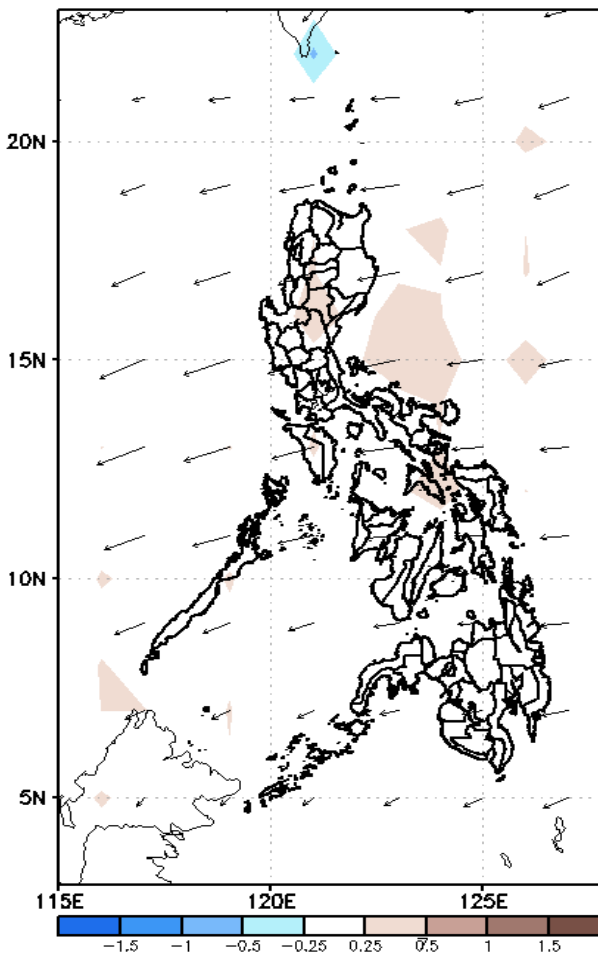
GEFS Week-2 Forecasts: Wind Anomaly Forecast

Week 2: Jun 13-19, 2022

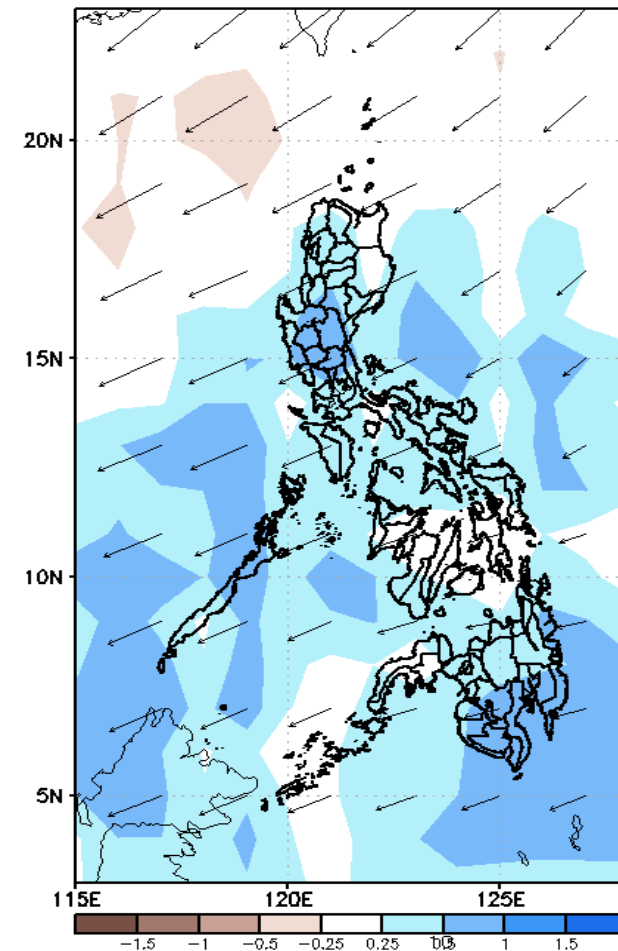
GEFS Week-2 850-hPa Divergence and Wind Anom
Valid: 20220620 - 20220626



GEFS Week-2 700-hPa Divergence and Wind Anom
Valid: 20220620 - 20220626



GEFS week-2 200-hPa Divergence and Wind Anom
Valid: 20220620 - 20220626

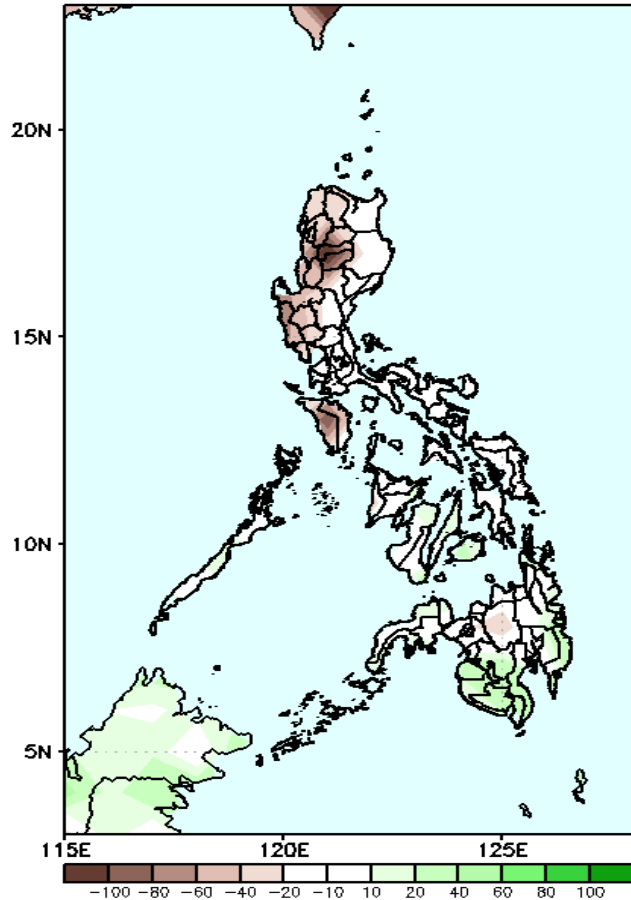


Easterlies affecting most parts of the country attributing to high likelihood of localized thunderstorms in most parts of the country during the forecast period

Precipitation Anomaly and Exceedance Probability > 25/50 mm

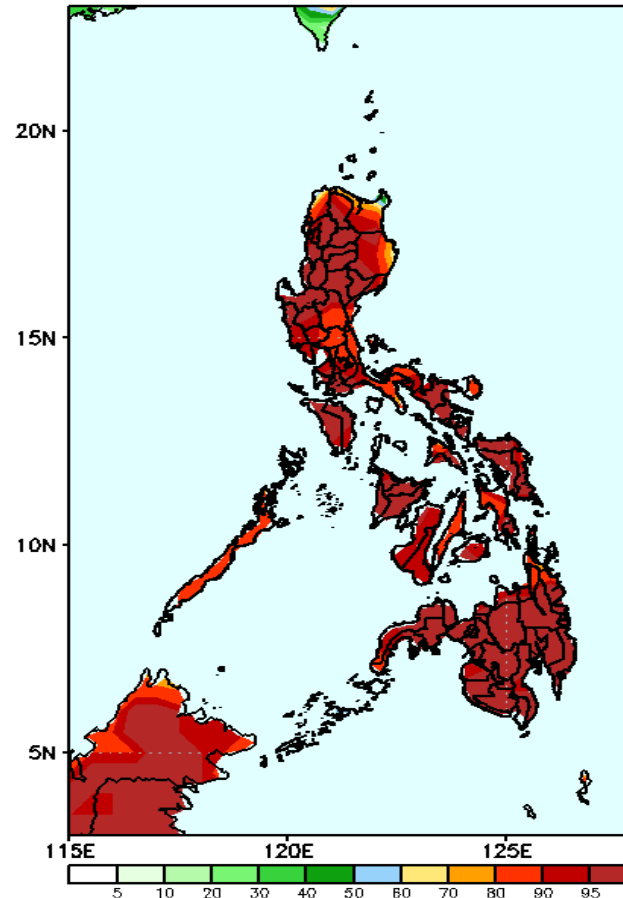
Week 2: Jun 13-19, 2022

GEFS Week-2 Precip Anomaly
Valid: 20220620 - 20220626



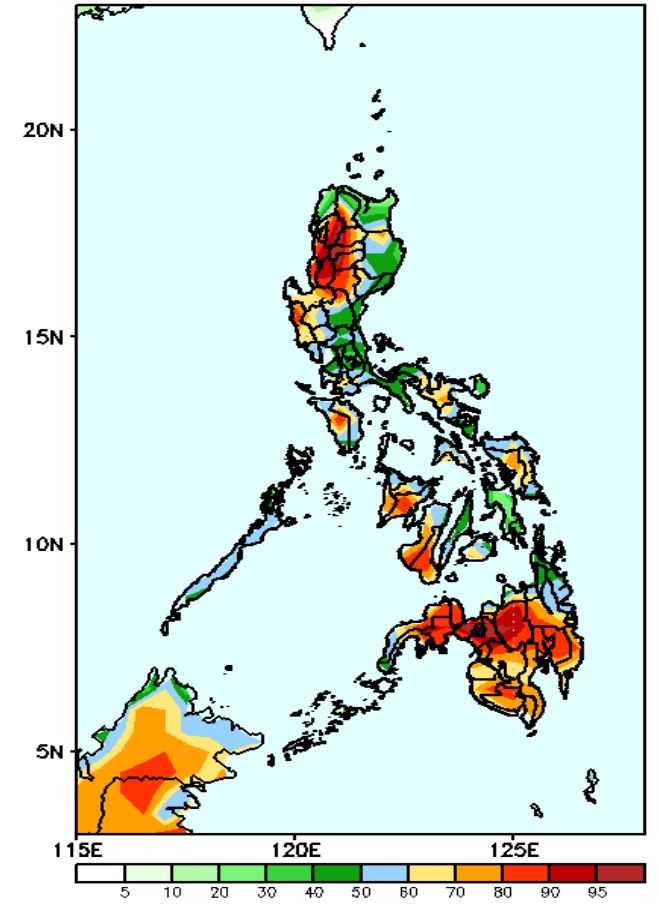
Rainfall deficit of 20-60mm is expected in Cordillera Region, Mindoro and Bukidnon while 40-60mm increase of rainfall in southwestern parts of Mindanao and Zamboanga del Norte during the forecast period.

GEFS Week-2 Exceedance Prob. > 25mm
Valid: 20220620 - 20220626



High probability of rainfall to exceed 25mm in most parts of the country during the forecast period.

GEFS Week-2 Exceedance Prob. > 50mm
Valid: 20220620 - 20220626



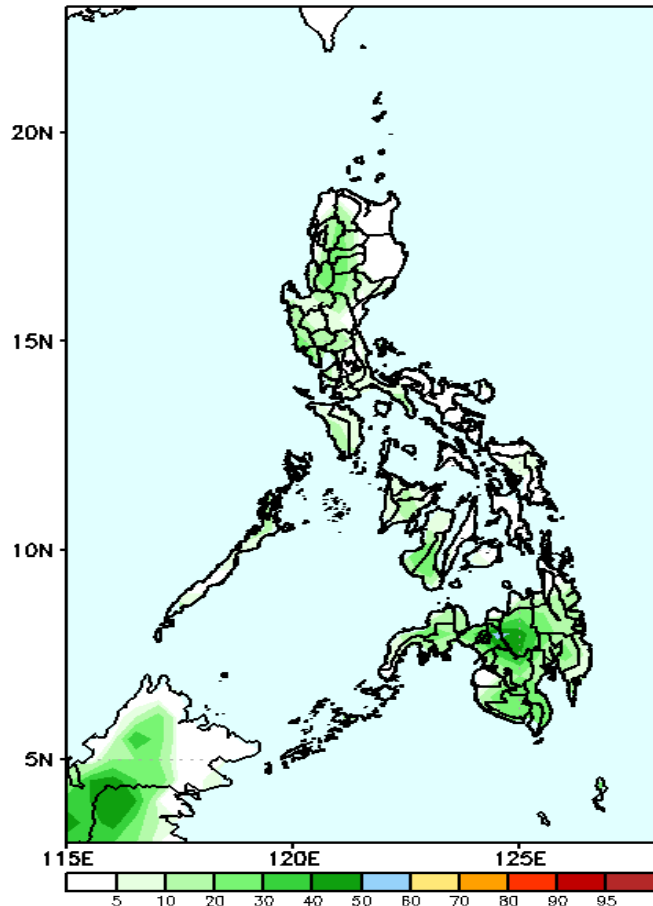
High probability of rainfall to exceed 50mm in most parts of the country except in Leyte, Cebu, Bohol and most of CARAGA Region during the forecast period.



Exceedance Probability > 100/150/200 mm

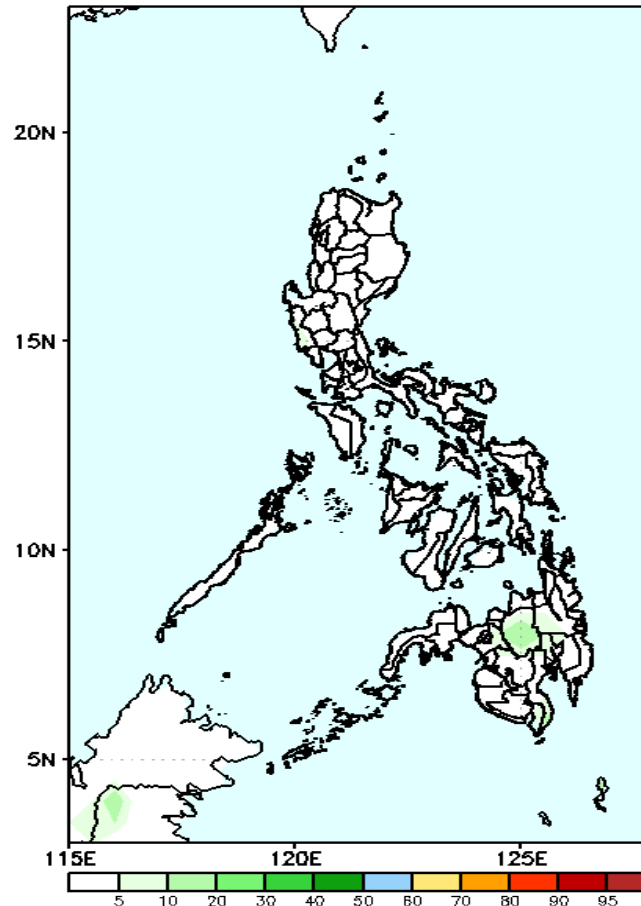
Week 2: Jun 13-19, 2022

GEFS Week-2 Exceedance Prob. > 100mm
Valid: 20220620 – 20220626



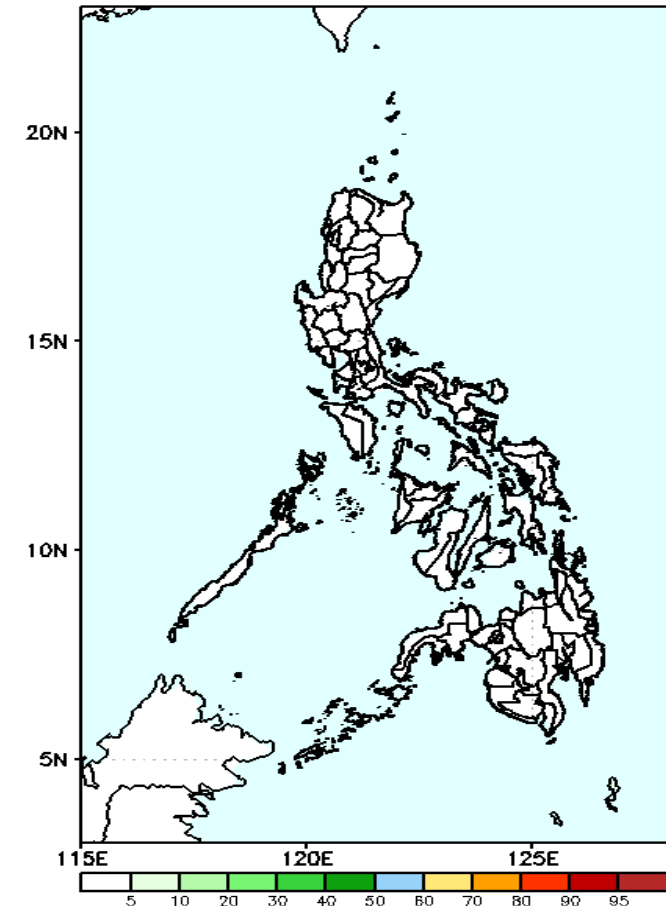
Low probability of rainfall to exceed 100mm in most parts of the country during the forecast period.

GEFS Week-2 Exceedance Prob. > 150mm
Valid: 20220620 – 20220626



Low probability of rainfall to exceed 150mm in most parts of the country during the forecast period.

GEFS Week-2 Exceedance Prob. > 200mm
Valid: 20220620 – 20220626



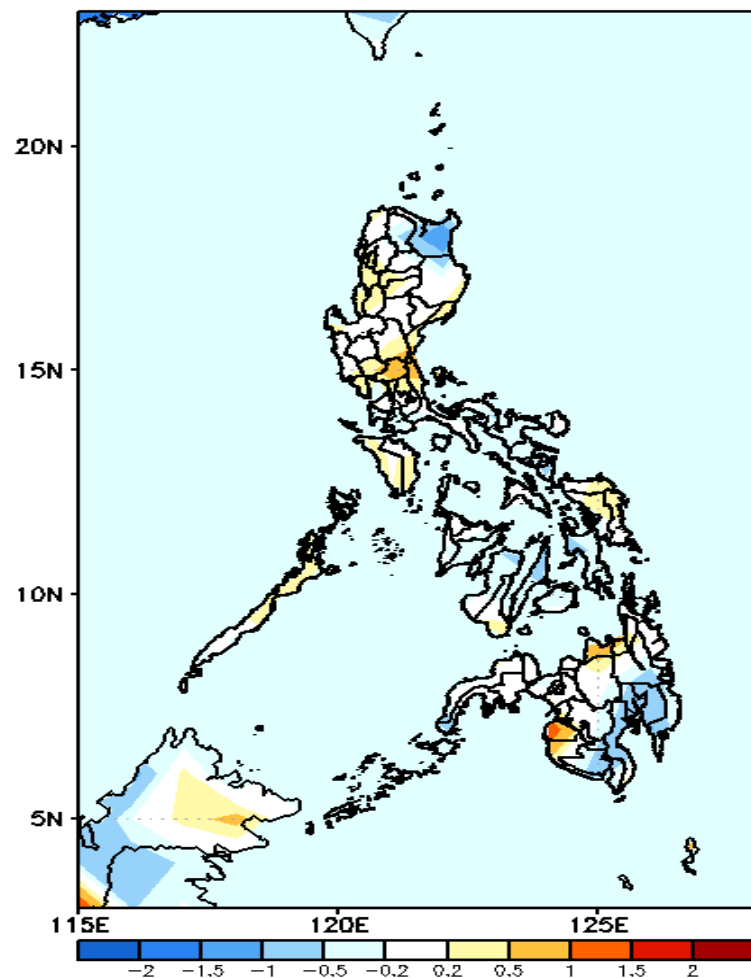
Low probability of rainfall to exceed 200mm in most parts of the country during the forecast period.

19
SA



GEFS Week-1 & 2 Forecasts: T2m Anomaly

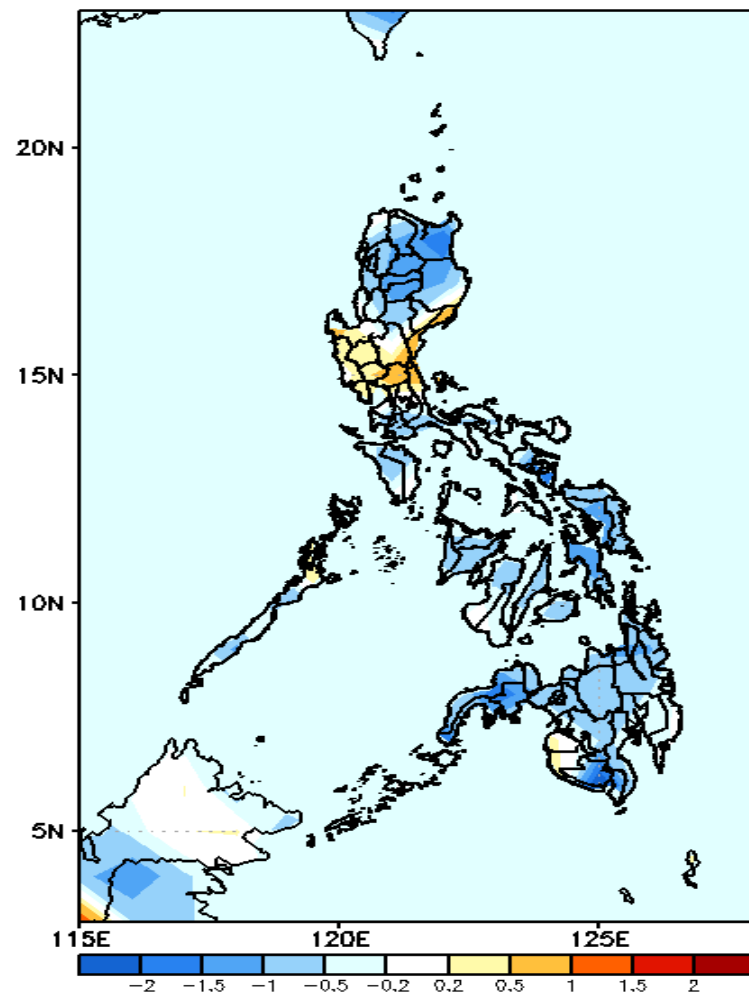
GEFS Week-1 T2m Anomaly
Valid: 20220613 – 20220619



2m Temperature Week 1: Jun 13-19, 2022

Slightly cooler surface air temperature will likely experience in Apayao, Cebu, Leyte, Negros Occidental, and southern Mindanao while average to slightly warmer temperature for the rest of the country during the forecast period.

GEFS Week-2 T2m Anomaly
Valid: 20220620 – 20220626



2m Temperature Week 2: Jun 20-26, 2022

Slightly cooler to cooler surface air temperature will likely experience in most parts of the country except in Central Luzon and Davao Region where average to slightly warmer temperature is more likely during the forecast period.