



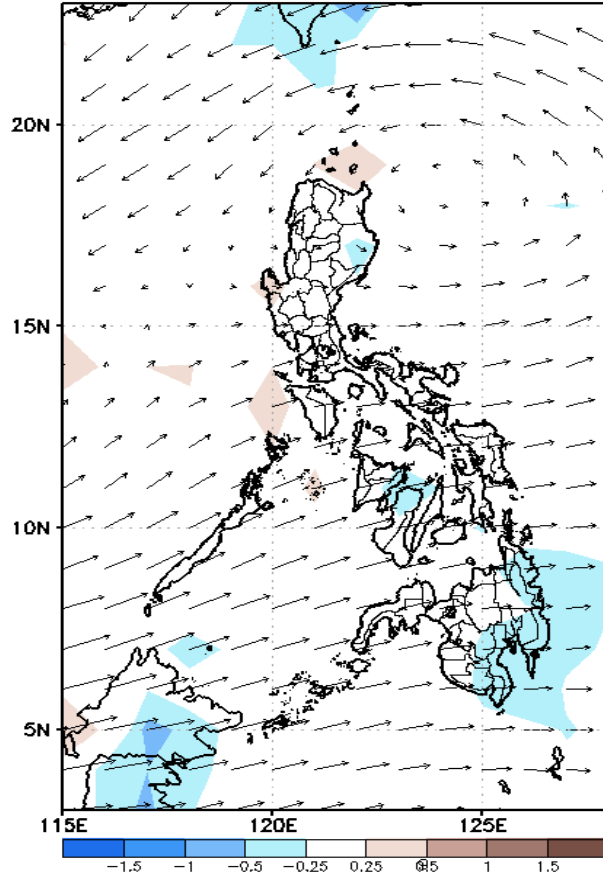
Week 1 & Week 2 Forecast for the Philippines using GEFS Model



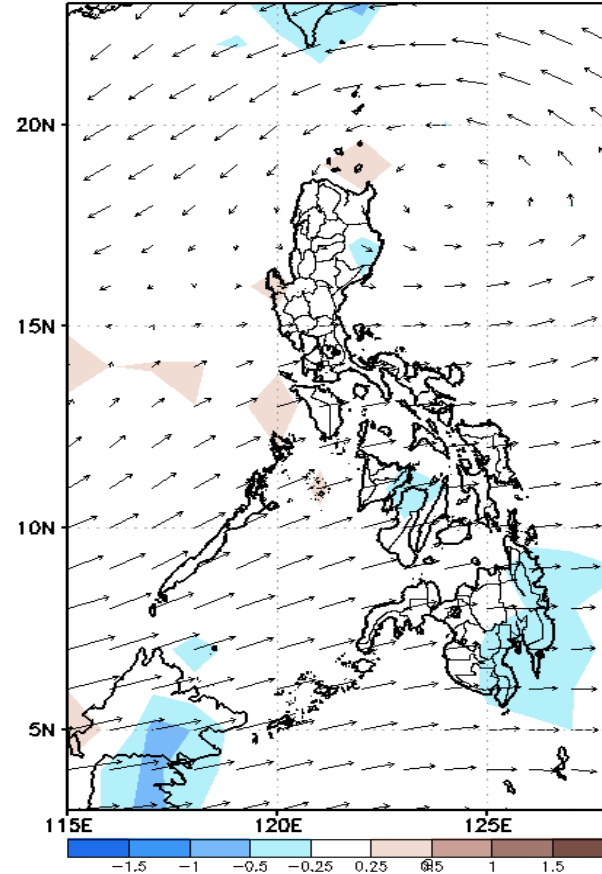
GEFS Week-1 Forecasts: Wind Anomaly Forecast

Week 1: Oct 13 - Oct 19, 2022

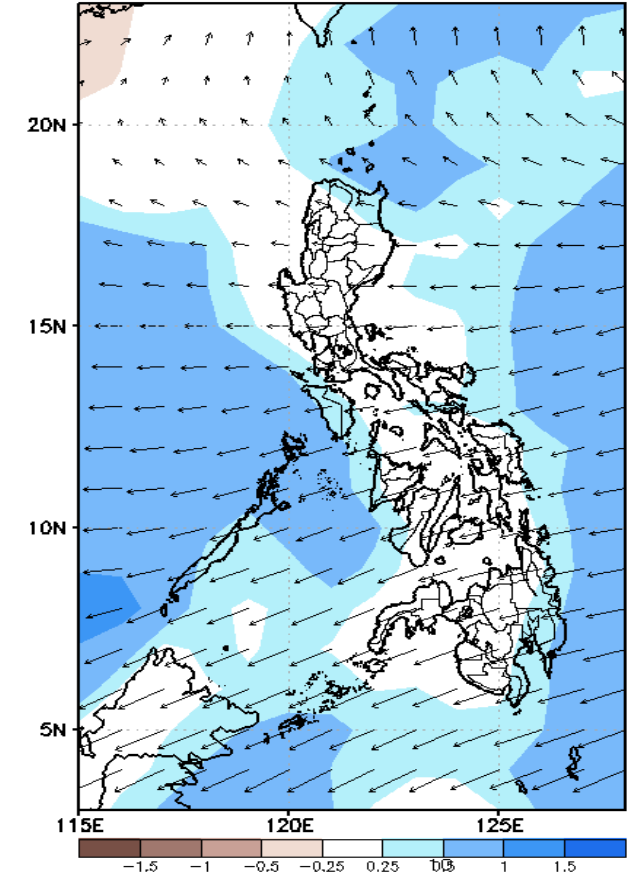
GEFS Week-1 850-hPa Divergence and Wind Anom
Valid: 20221013 - 20221019



GEFS Week-1 700-hPa Divergence and Wind Anom
Valid: 20221013 - 20221019



GEFS Week-1 200-hPa Divergence and Wind Anom
Valid: 20221013 - 20221019

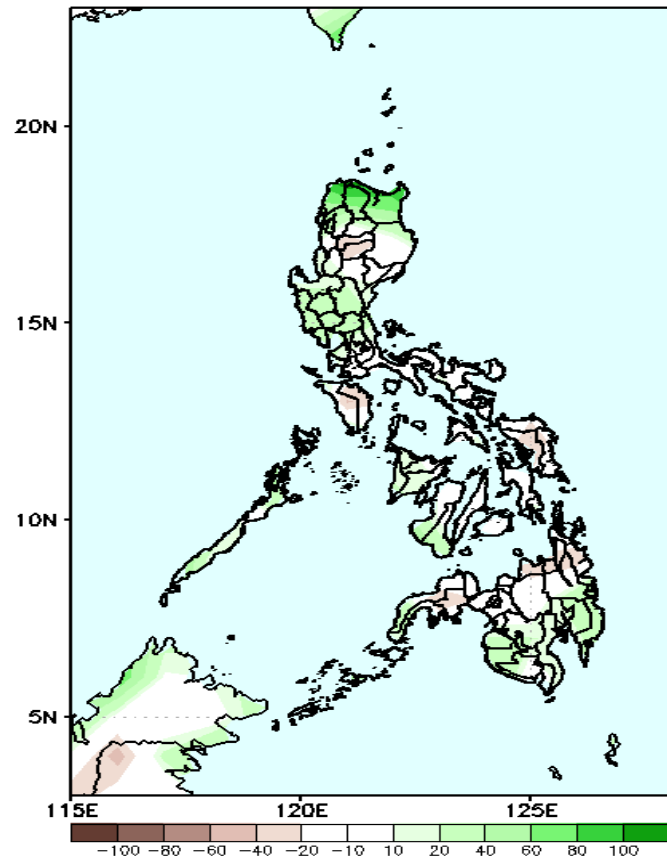


A cyclonic wind circulation will likely affect Northern and Central Luzon. Westerlies affecting the rest of the country during the forecast period.

Precipitation Anomaly and Exceedance Probability > 25/50 mm

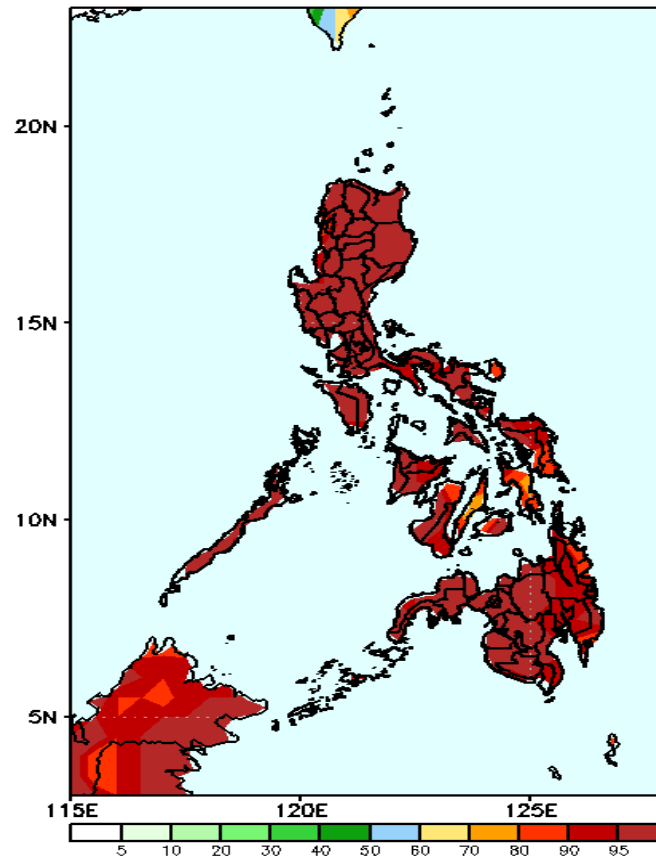
Week 1: Oct 13 - Oct 19, 2022

GEFS Week-1 Precip Anomaly
Valid: 20221013 - 20221019



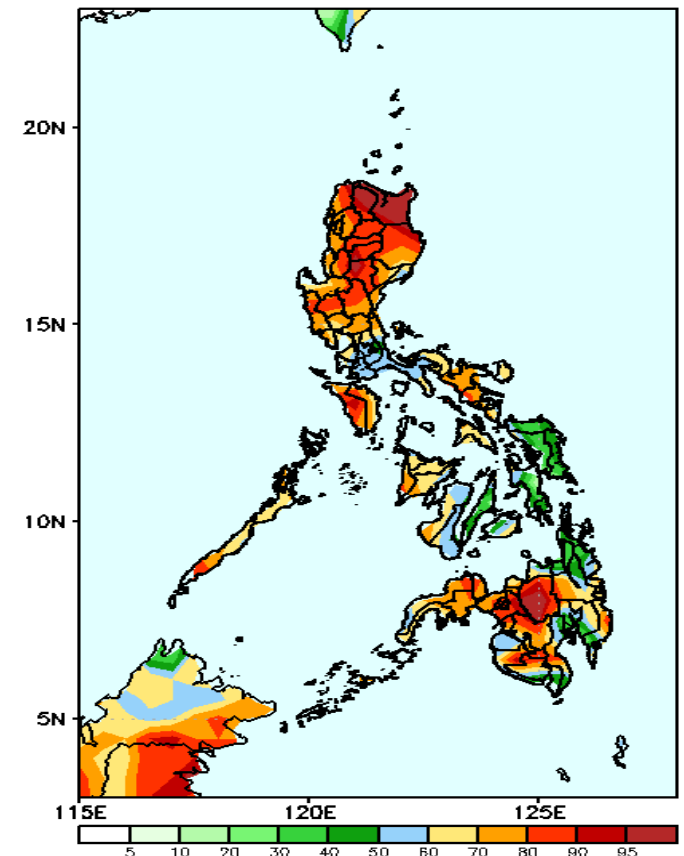
Increase of rainfall of 40-90mm is expected in Ilocos Norte, Apayao, Cagayan, Palawan, most parts of Central Luzon, western Visayas and southern Mindanao while 10-50mm rainfall deficit for the rest of the country during the forecast period.

GEFS Week-1 Exceedance Prob. > 25mm
Valid: 20221013 - 20221019



High probability of rainfall to exceed 25mm in most parts of the country during the forecast period.

GEFS Week-1 Exceedance Prob. > 50mm
Valid: 20221013 - 20221019



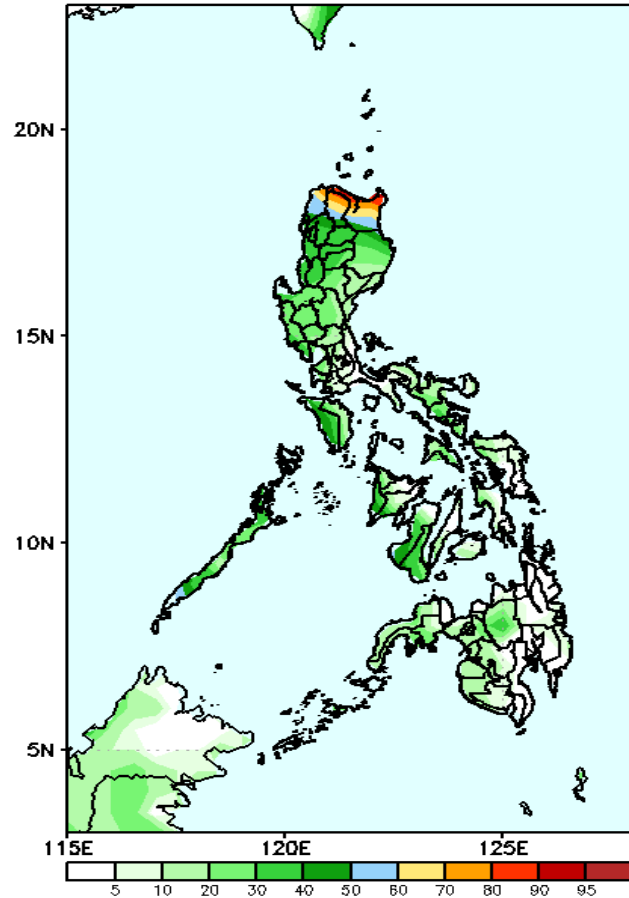
High probability of rainfall to exceed 50mm in most parts of the country except in Eastern and Central Visayas and CARAGA Region during the forecast period.



Exceedance Probability > 100/150/200 mm

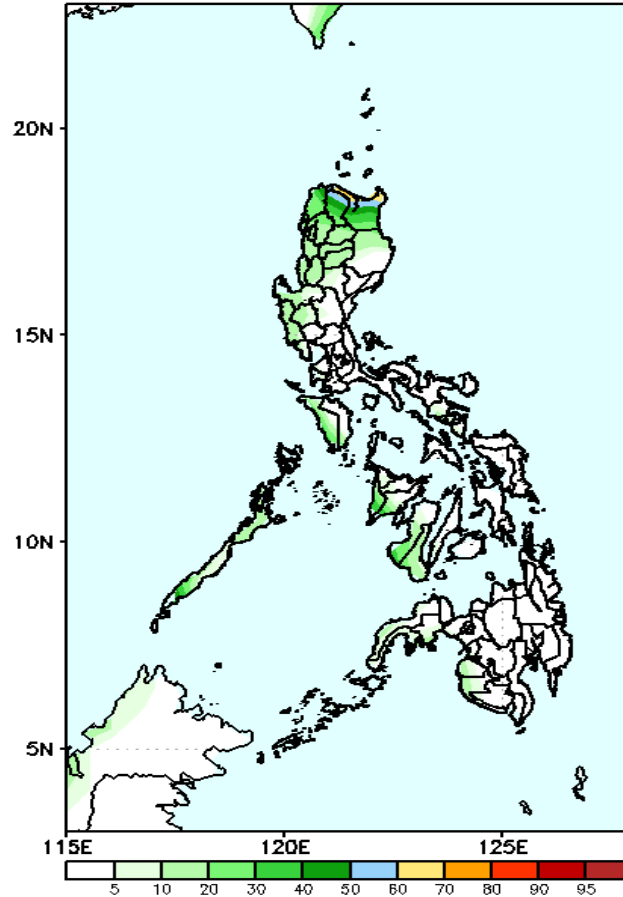
Week 1: Oct 13 - Oct 19, 2022

GEFS Week-1 Exceedance Prob. > 100mm
Valid: 20221013 - 20221019



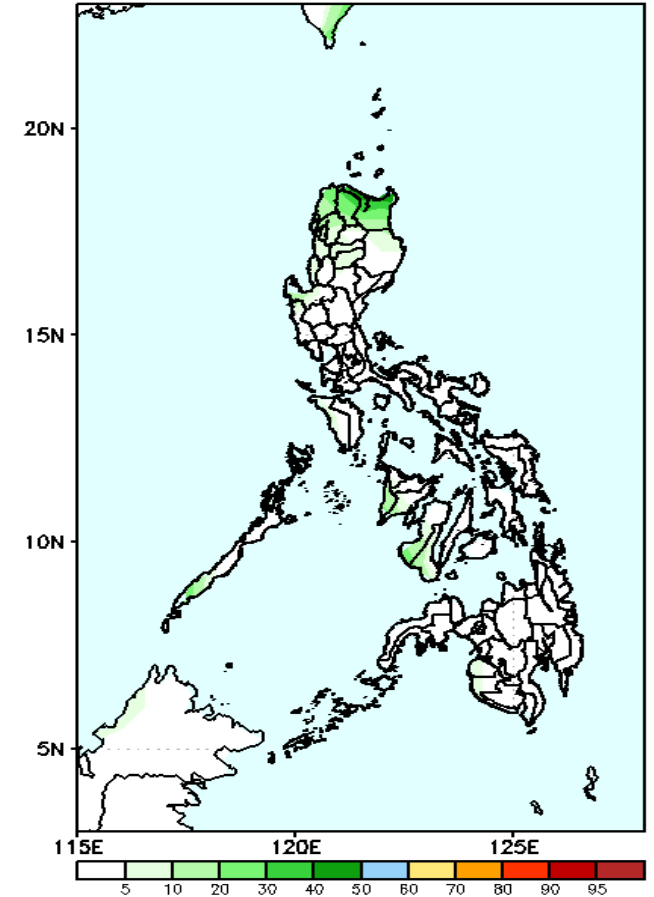
Low probability of rainfall to exceed 150mm in most parts of the country except in Ilocos Norte, Apayao and Cagayan where there is 60-85% chance during the forecast period.

GEFS Week-1 Exceedance Prob. > 150mm
Valid: 20221013 - 20221019



Low probability of rainfall to exceed 150mm in most parts of the country during the forecast period.

GEFS Week-1 Exceedance Prob. > 200mm
Valid: 20221013 - 20221019



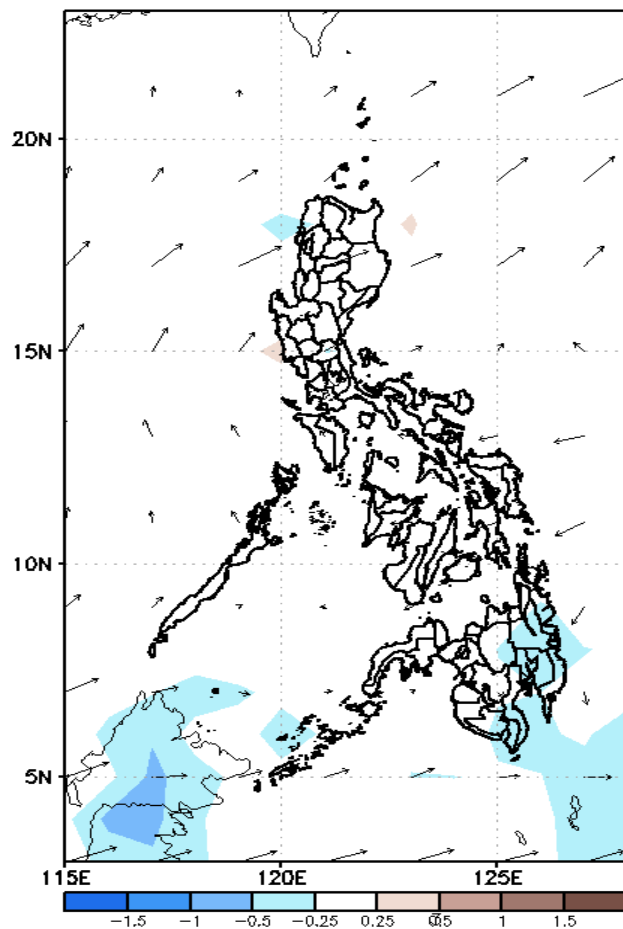
Low probability of rainfall to exceed 200mm in most parts of the country during the forecast period.



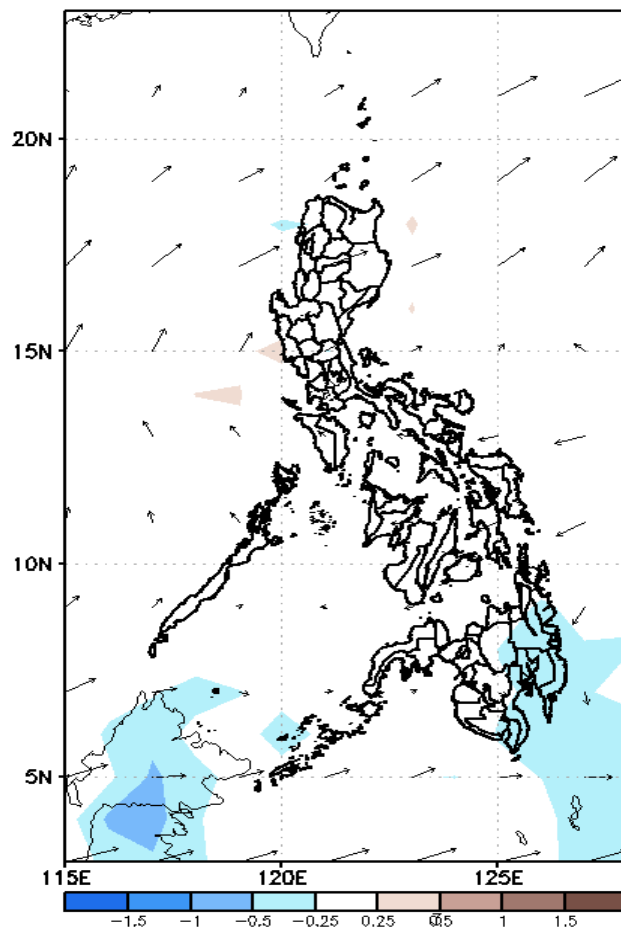
GEFS Week-2 Forecasts: Wind Anomaly Forecast

Week 2: Oct 20-26, 2022

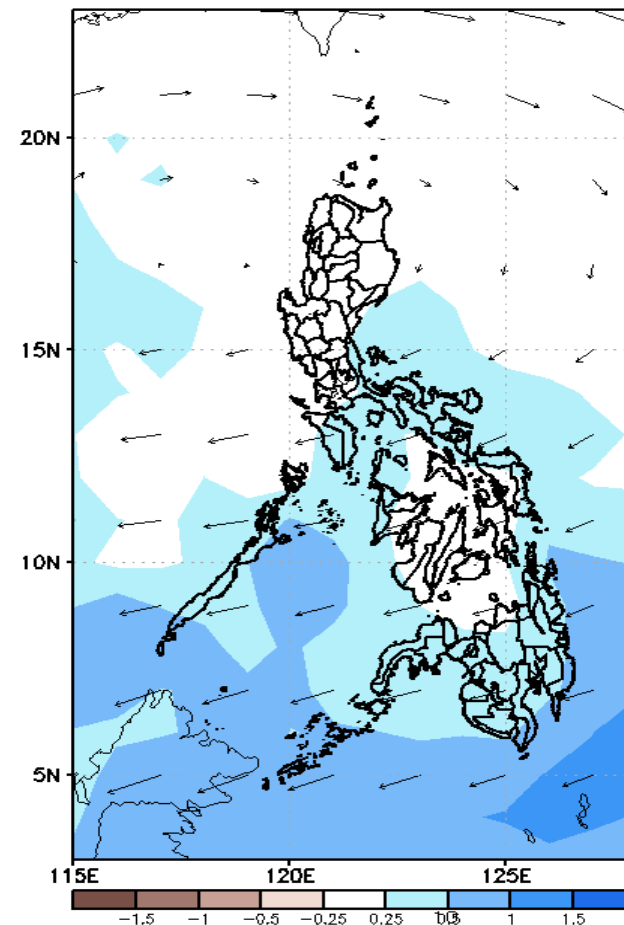
GEFS Week-2 850-hPa Divergence and Wind Anom
Valid: 20221020 - 20221026



GEFS Week-2 700-hPa Divergence and Wind Anom
Valid: 20221020 - 20221026



GEFS week-2 200-hPa Divergence and Wind Anom
Valid: 20221020 - 20221026

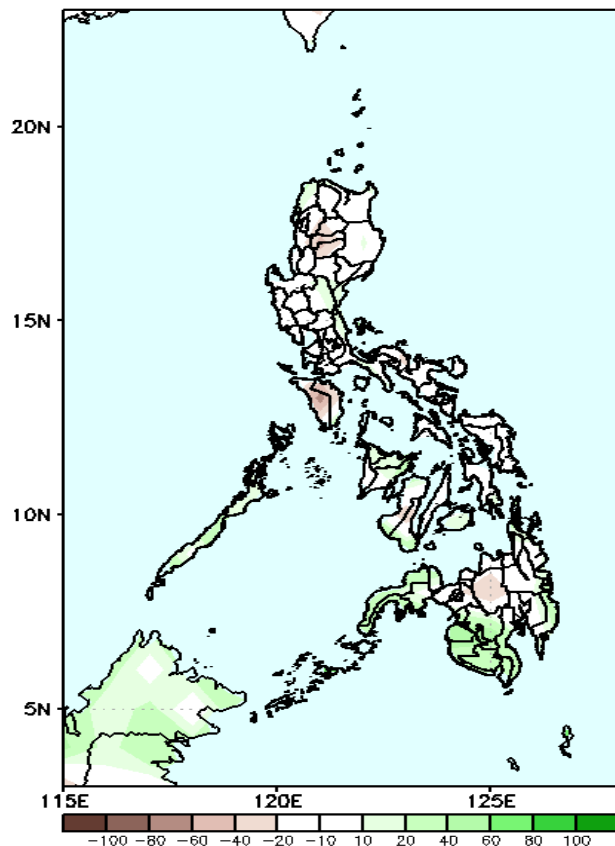


Westerly to Southwesterly winds affecting most of the country during the forecast period.

Precipitation Anomaly and Exceedance Probability > 25/50 mm

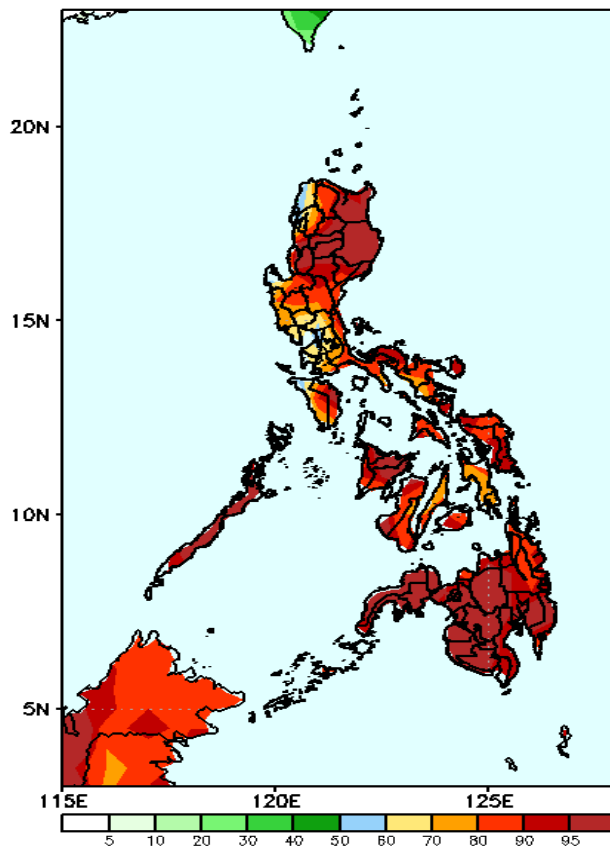
Week 2: Oct 20-26, 2022

GEFS Week-2 Precip Anomaly
Valid: 20221020 - 20221026



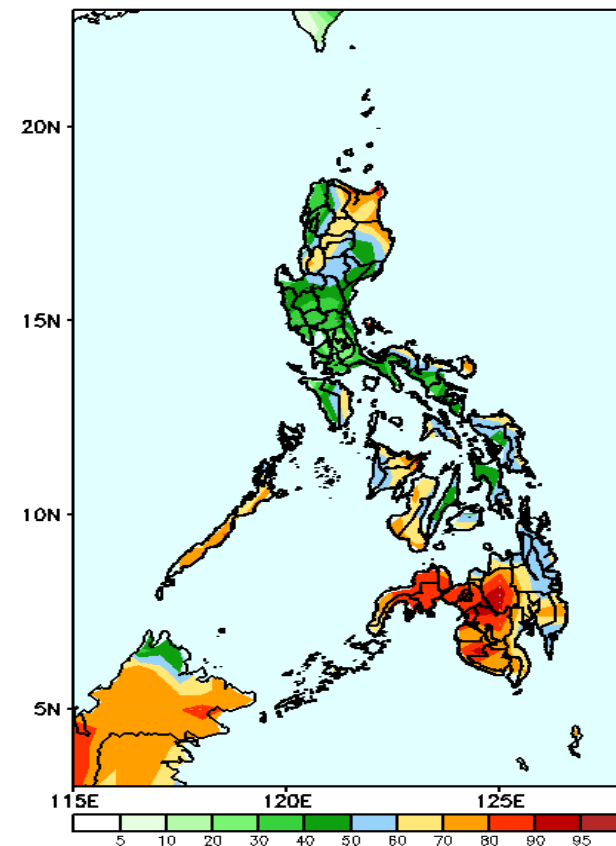
Rainfall deficit of 10-50mm is expected in most parts Luzon, Visayas and Bukidnon while 20-60mm increase of rainfall in most parts of Mindanao during the forecast period.

GEFS Week-2 Exceedance Prob. > 25mm
Valid: 20221020 - 20221026



High probability of rainfall to exceed 25mm in most parts of the country during the forecast period.

GEFS Week-2 Exceedance Prob. > 50mm
Valid: 20221020 - 20221026

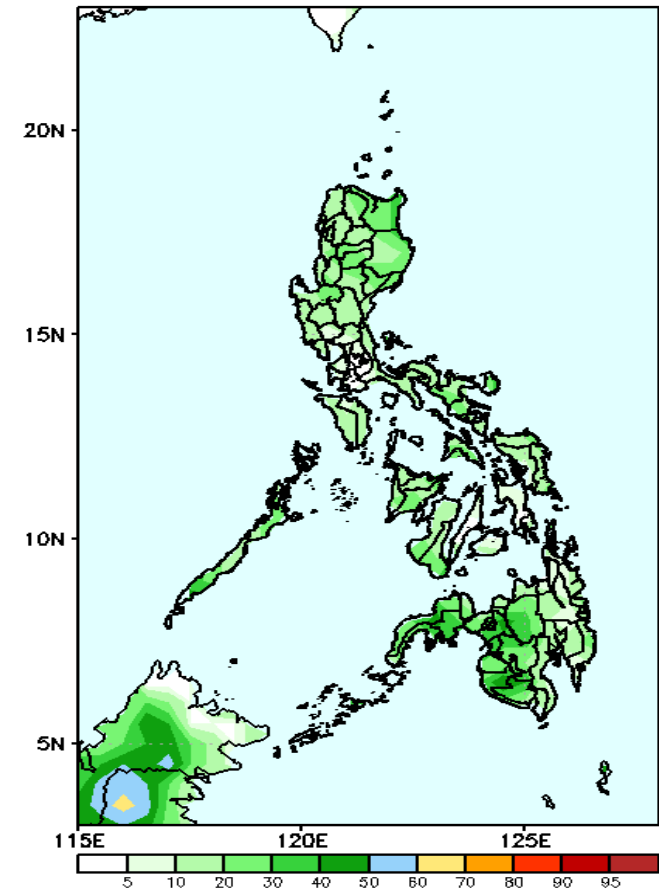


High probability of rainfall to exceed 50mm in most parts of Mindanao while 60-85% chance for the rest of the country during the forecast period.

Exceedance Probability > 100/150/200 mm

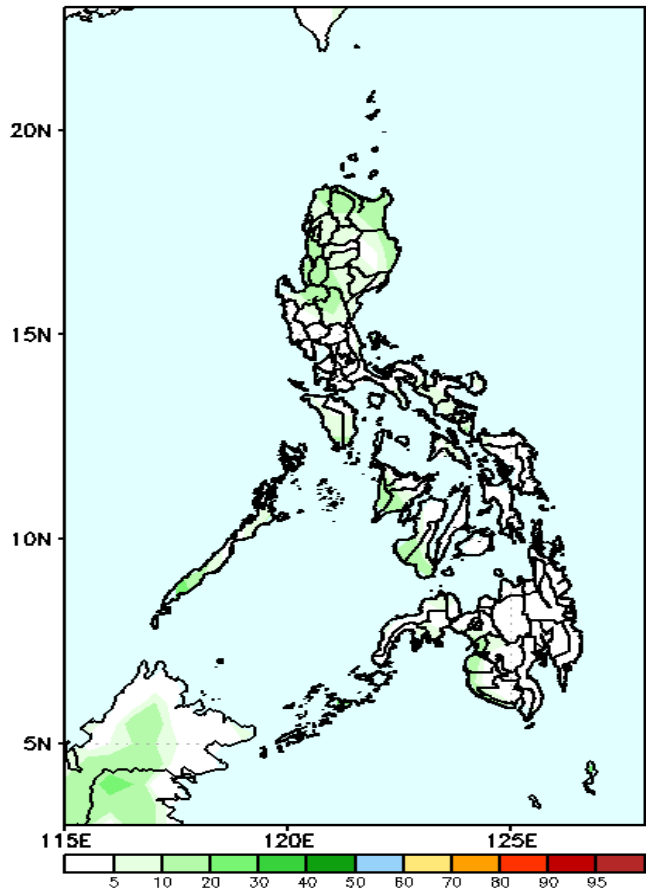
Week 2: Oct 20-26, 2022

GEFS Week-2 Exceedance Prob. > 100mm
Valid: 20221020 – 20221026



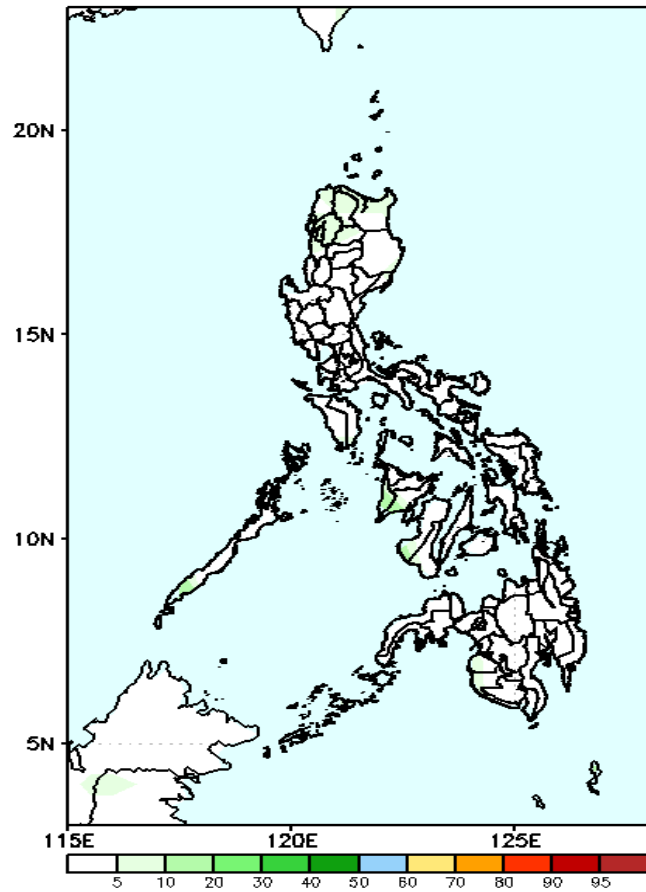
Low probability of rainfall to exceed 100mm in most parts of the country during the forecast period.

GEFS Week-2 Exceedance Prob. > 150mm
Valid: 20221020 – 20221026



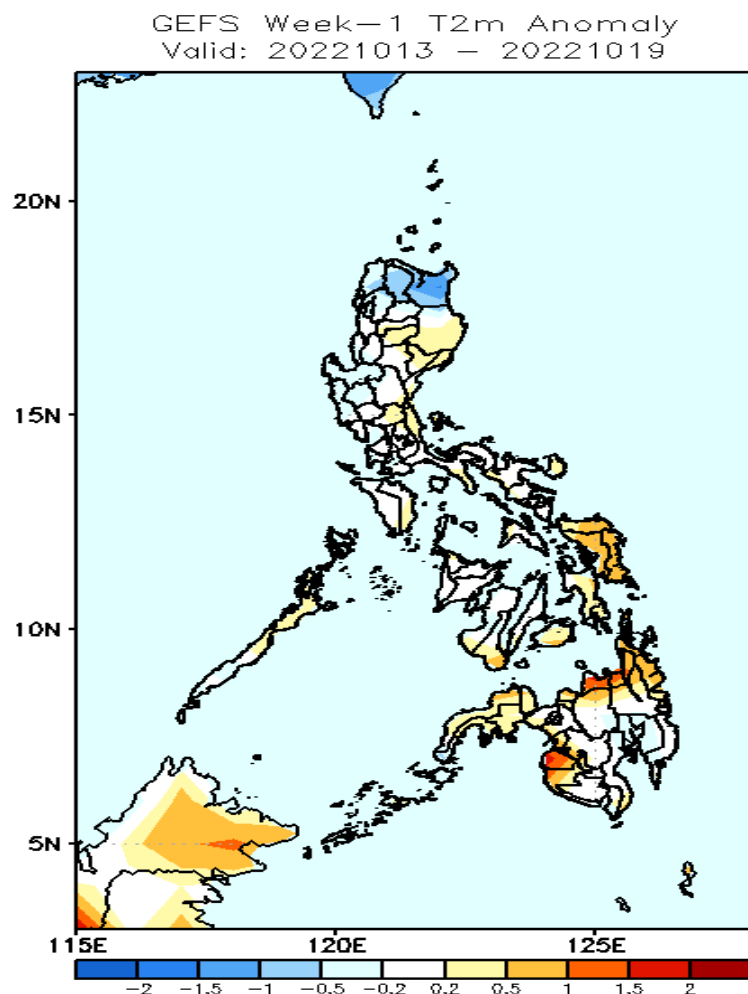
Low probability of rainfall to exceed 150mm in most parts of the country during the forecast period.

GEFS Week-2 Exceedance Prob. > 200mm
Valid: 20221020 – 20221026



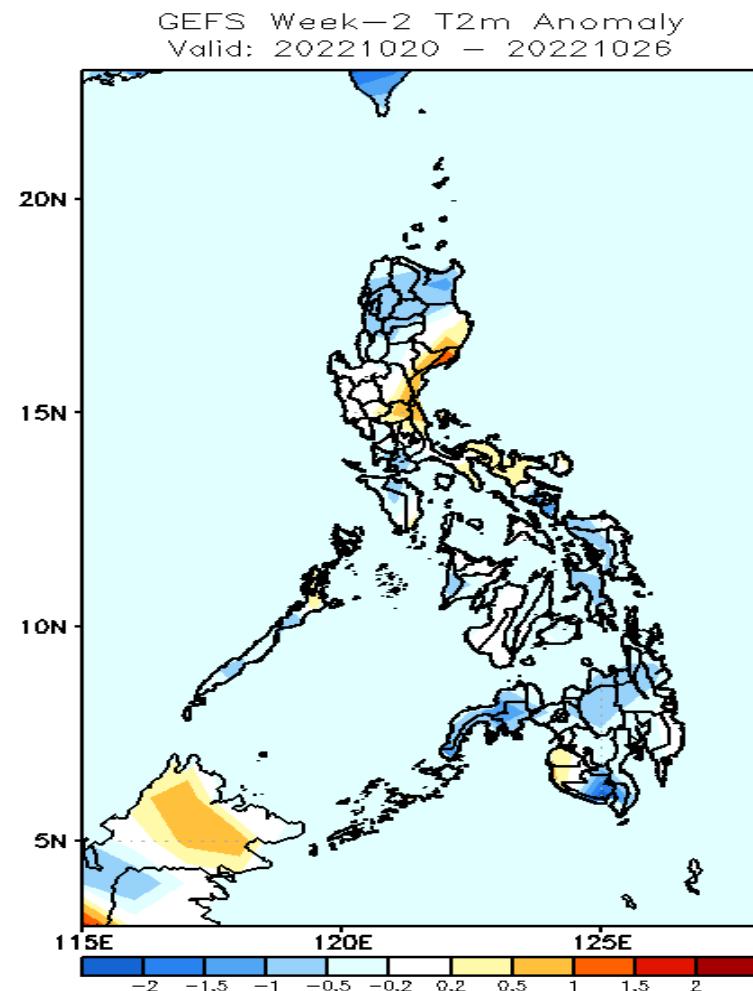
Low probability of rainfall to exceed 200mm in most parts of the country during the forecast period.

GEFS Week-1 & 2 Forecasts: T2m Anomaly



2m Temperature Week 1: Oct 13 - Oct 19, 2022

Near to warmer than average surface air temperature will likely experience in most parts of the country except in Apayao and Cagayan where slightly cooler than average surface air temperature will be likely during the forecast period.



2m Temperature Week 2: Oct 20-26, 2022

Slightly cooler to cooler than average surface air temperature will likely experience in most parts of the country except in some areas in eastern Luzon, Maguindanao and Sultan Kudarat where near to warmer than average surface air temperature will be likely during the forecast period.