



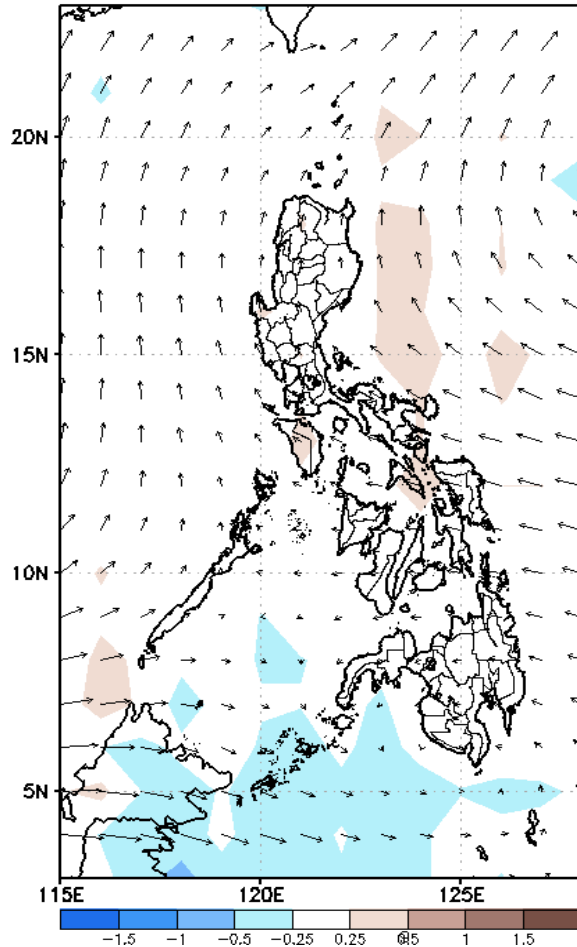
Week 1 & Week 2 Forecast for the Philippines using GEFS Model



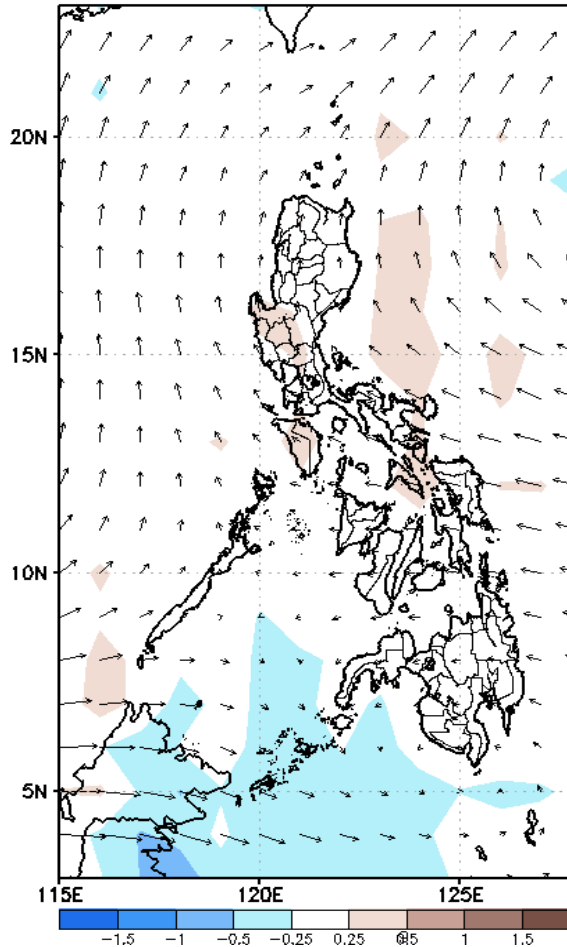
GEFS Week-1 Forecasts: Wind Anomaly Forecast

Week 1: Jul 13 - Jul 19, 2022

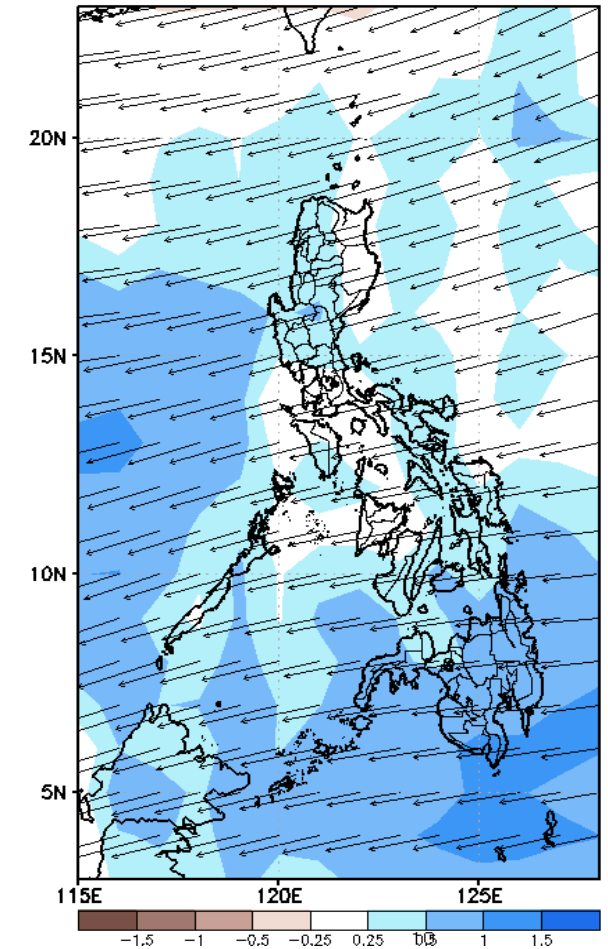
GEFS Week-1 850-hPa Divergence and Wind Anomaly
Valid: 20220713 - 20220719



GEFS Week-1 700-hPa Divergence and Wind Anomaly
Valid: 20220713 - 20220719



GEFS Week-1 200-hPa Divergence and Wind Anomaly
Valid: 20220713 - 20220719

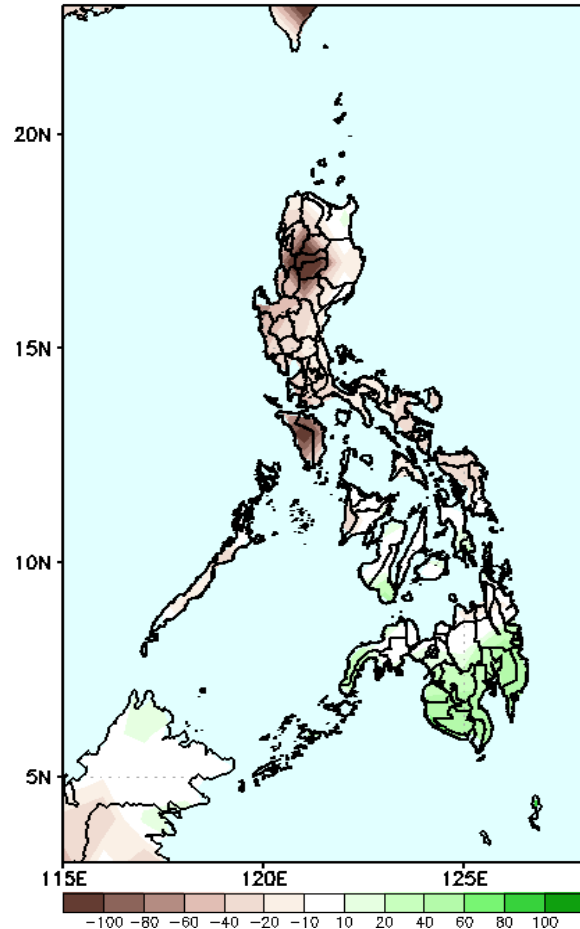


Southwest Monsoon affecting the western sections Luzon, Westerly windflow affecting the western sections of Visayas and Mindanao. while Easterlies affecting the eastern side during the forecast period.

Precipitation Anomaly and Exceedance Probability > 25/50 mm

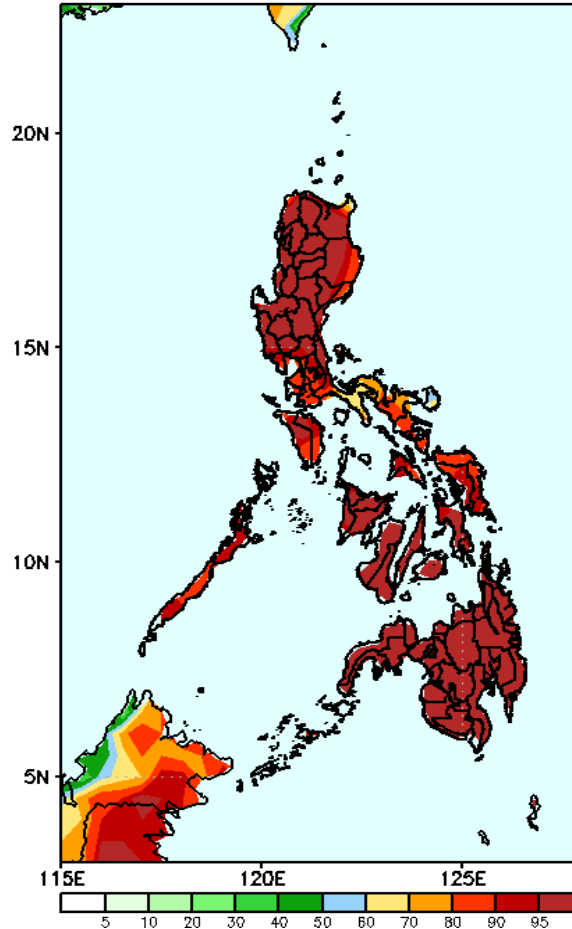
Week 1: Jul 13 - Jul 19, 2022

GEFS Week-1 Precip. Anomaly
Valid: 20220713 - 20220719



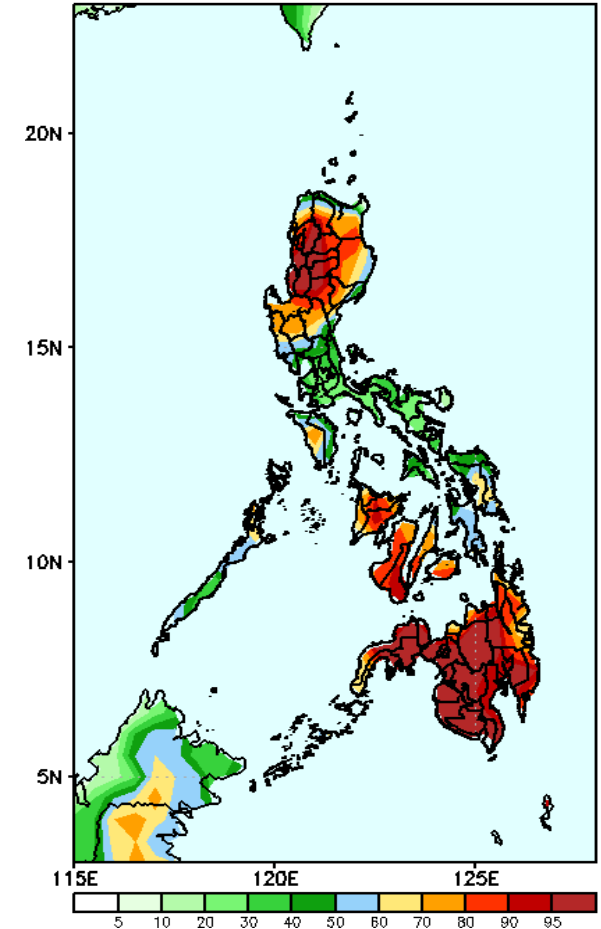
40 – 100mm rainfall deficit will be likely in most parts of Luzon and Eastern Visayas while an increase of rainfall of 20 – 60mm is expected for the rest of the country during the forecast period .

GEFS Week-1 Exceedance Prob. > 25mm
Valid: 20220713 - 20220719



High probability of rainfall to exceed 25mm in most parts of the country during the forecast period.

GEFS Week-1 Exceedance Prob. > 50mm
Valid: 20220713 - 20220719



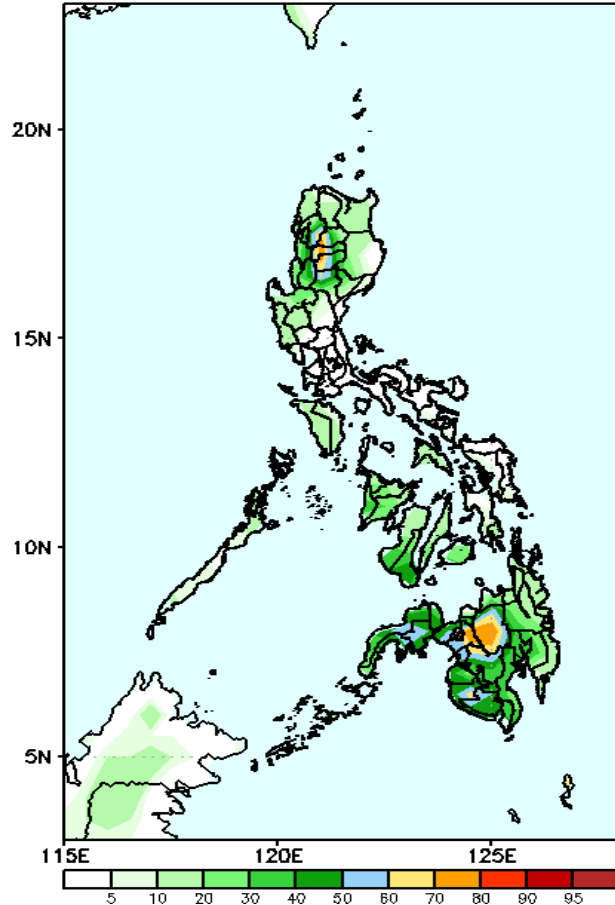
High probability of rainfall to exceed 50mm in most parts Northern and Central Luzon, Western and central Visayas and most parts of Mindanao while less likely for the rest of the country during the forecast period.



Exceedance Probability > 100/150/200 mm

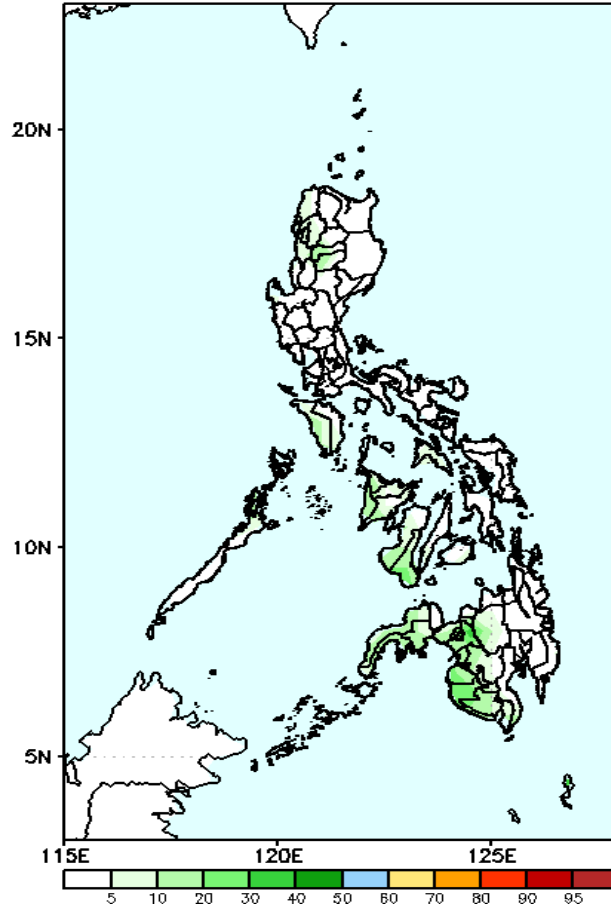
Week 1: Jul 13 - Jul 19, 2022

GEFS Week-1 Exceedance Prob. > 100mm
Valid: 20220713 - 20220719



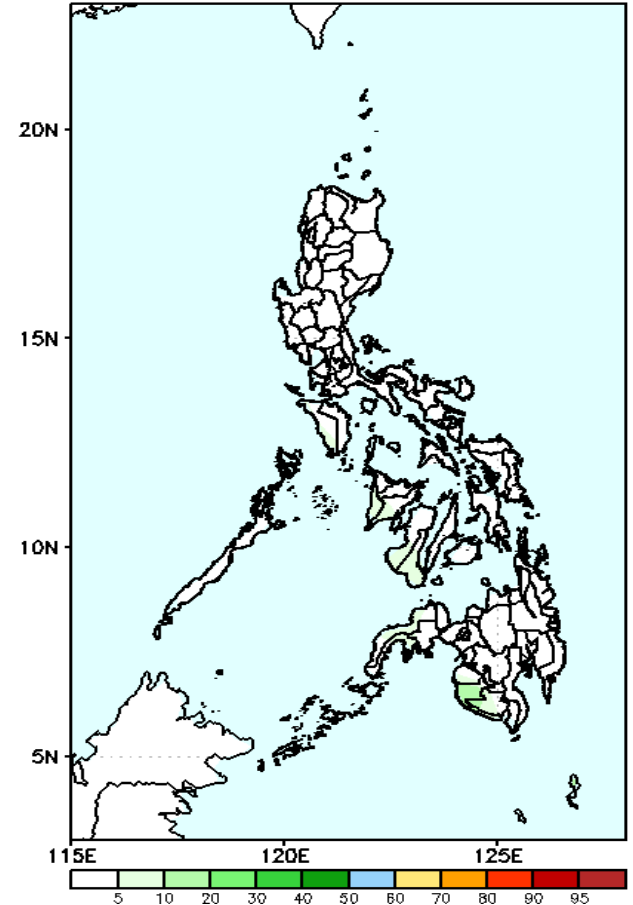
Low probability of rainfall to exceed 100mm in most parts of the country except Bukidnon where high probability is expected during the forecast period.

GEFS Week-1 Exceedance Prob. > 150mm
Valid: 20220713 - 20220719



Low probability of rainfall to exceed 150mm in most parts of the country during the forecast period.

GEFS Week-1 Exceedance Prob. > 200mm
Valid: 20220713 - 20220719

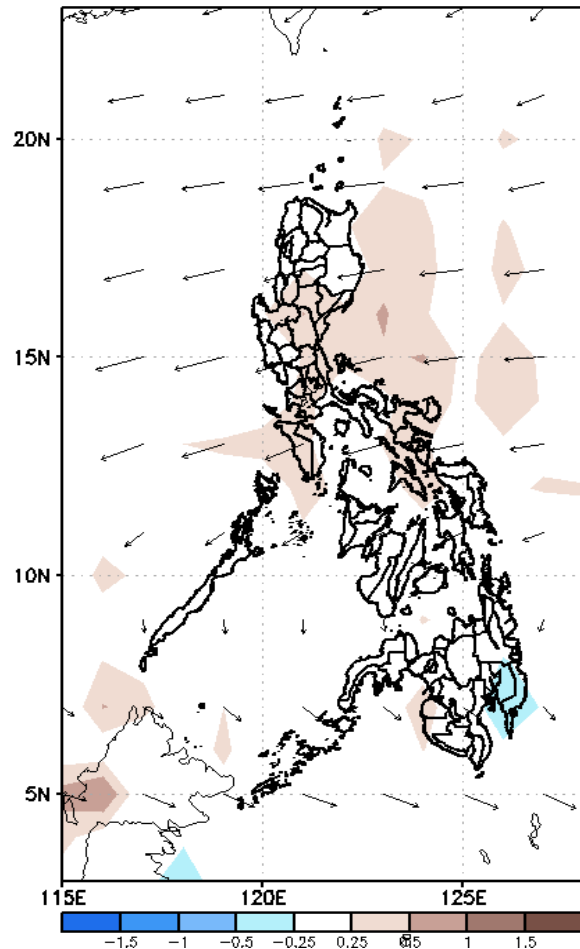


Low probability of rainfall to exceed 200mm in most parts of the country during the forecast period.

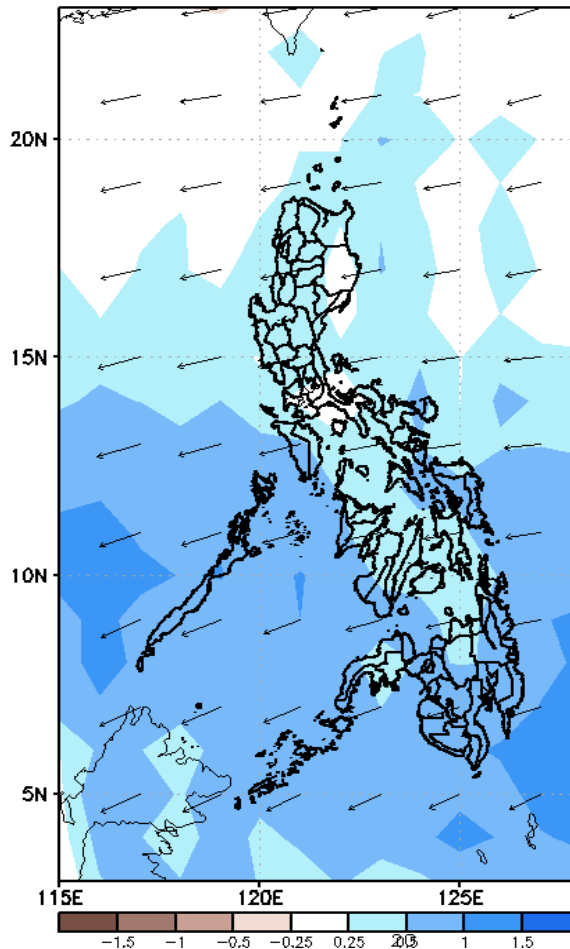
GEFS Week-2 Forecasts: Wind Anomaly Forecast

Week 2: Jul 20 - Jul 26, 2022

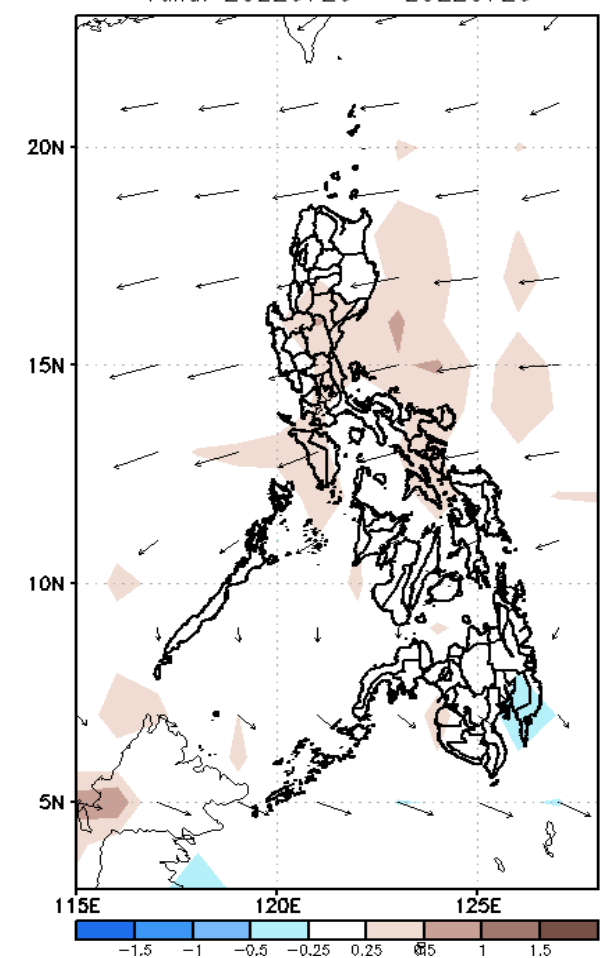
GEFS Week-2 850-hPa Divergence and Wind Anomaly
Valid: 20220720 - 20220726



GEFS week-2 200-hPa Divergence and Wind Anomaly
Valid: 20220720 - 20220726



GEFS Week-2 700-hPa Divergence and Wind Anomaly
Valid: 20220720 - 20220726

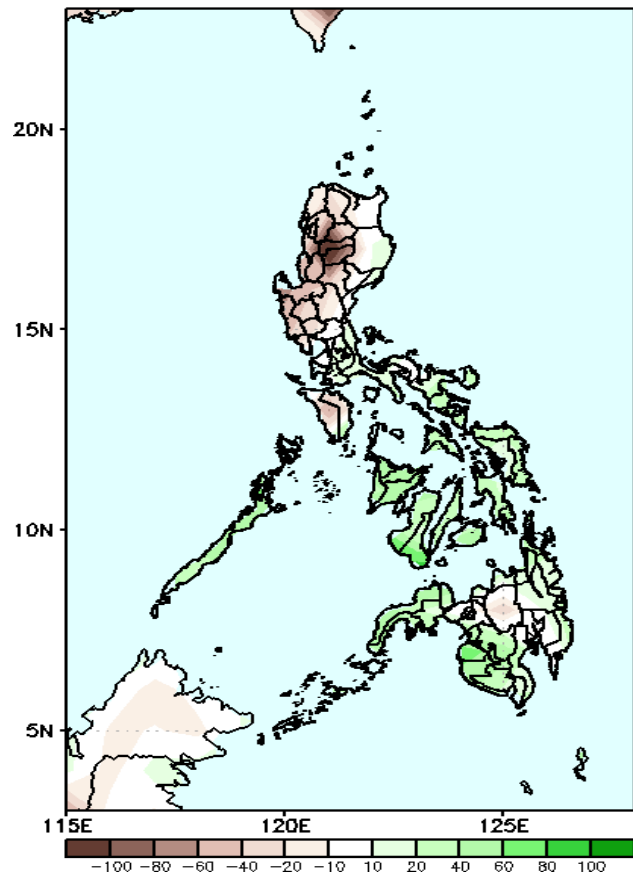


Easterlies affecting most parts of the country during the forecast period.

Precipitation Anomaly and Exceedance Probability > 25/50 mm

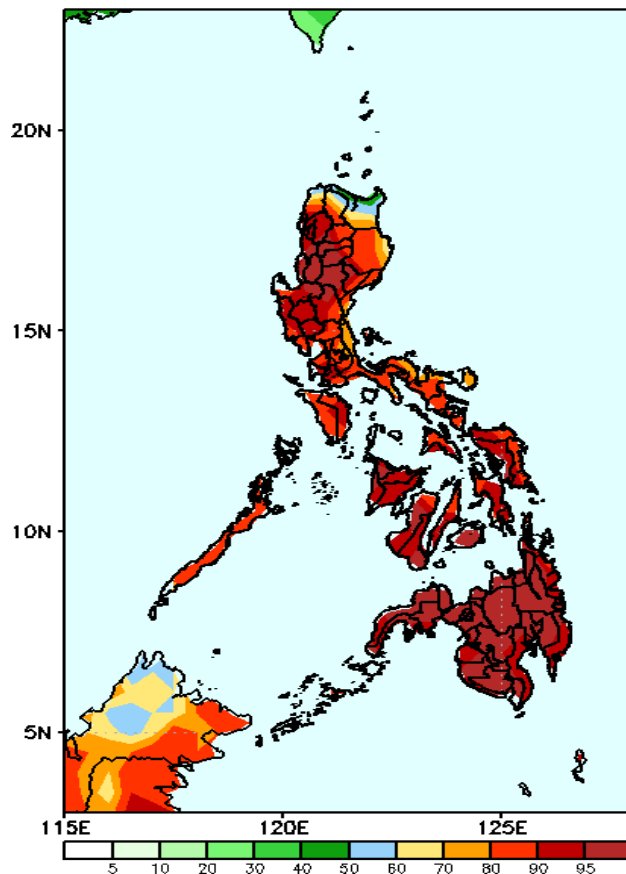
Week 2: Jul 20 - Jul 26, 2022

GEFS Week-2 Precip Anomaly
Valid: 20220720 - 20220726



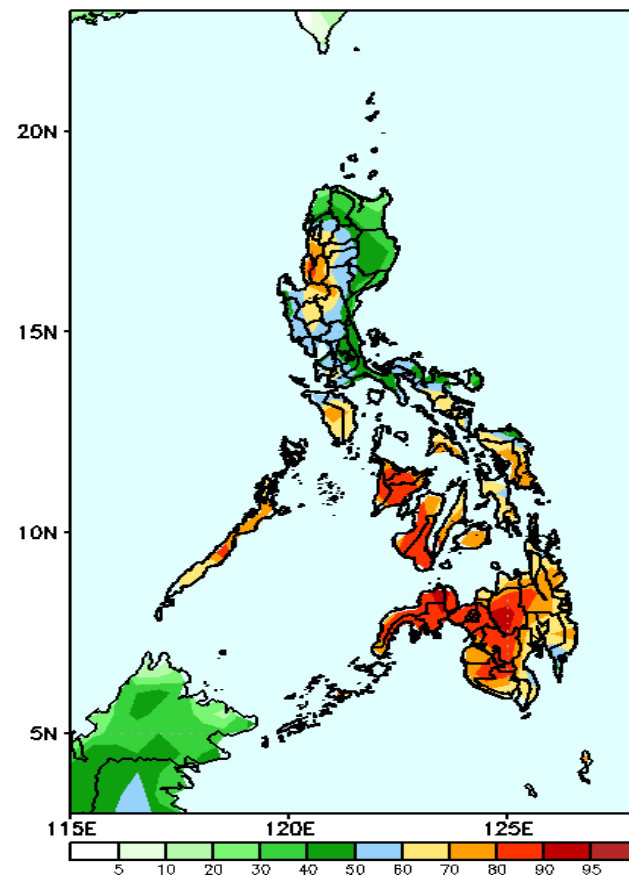
40 – 80mm rainfall deficit will be likely in most parts of Luzon except Bicol region) and while an increase of rainfall of 20 – 60mm is expected for the rest of the country during the forecast period .

GEFS Week-2 Exceedance Prob. > 25mm
Valid: 20220720 - 20220726



High probability of rainfall to exceed 25mm in most parts of the country during the forecast period.

GEFS Week-2 Exceedance Prob. > 50mm
Valid: 20220720 - 20220726

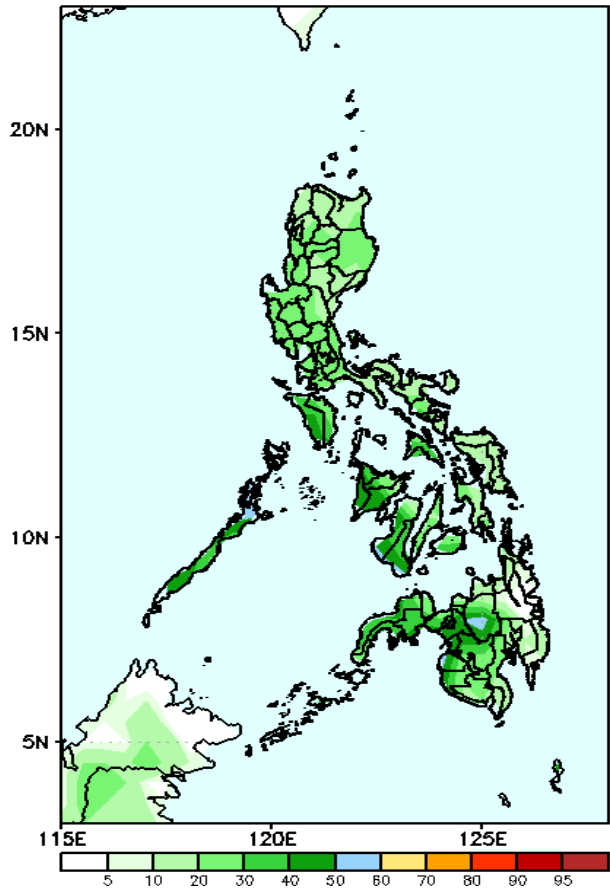


High probability of rainfall to exceed 50mm in some areas in Northern and Central Luzon, Albay, Sorsogon, MIMAROPA and most parts of Mindanao while less likely for the rest of the country during the forecast period.

Exceedance Probability > 100/150/200 mm

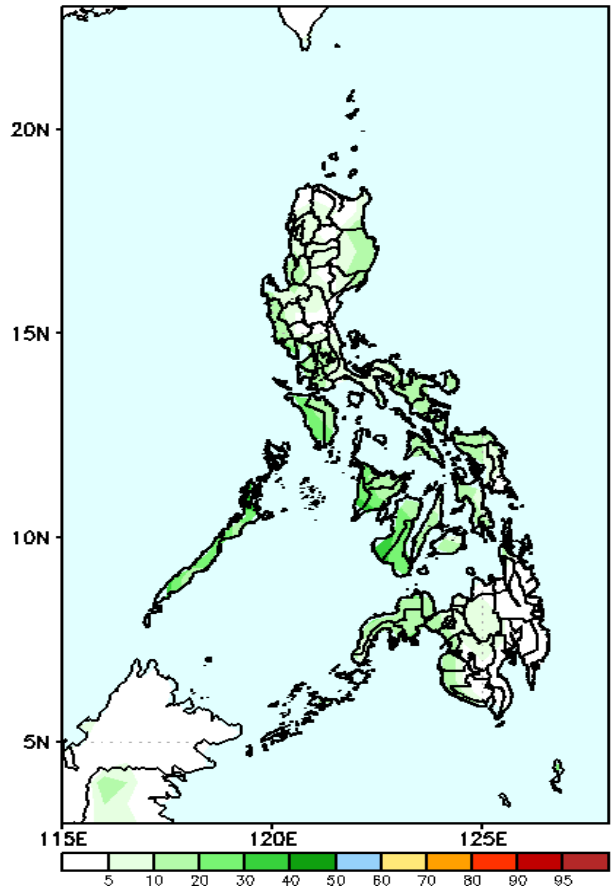
Week 2: Jul 18 - Jul 24, 2022

GEFS Week-2 Exceedance Prob. > 100mm
Valid: 20220720 - 20220726



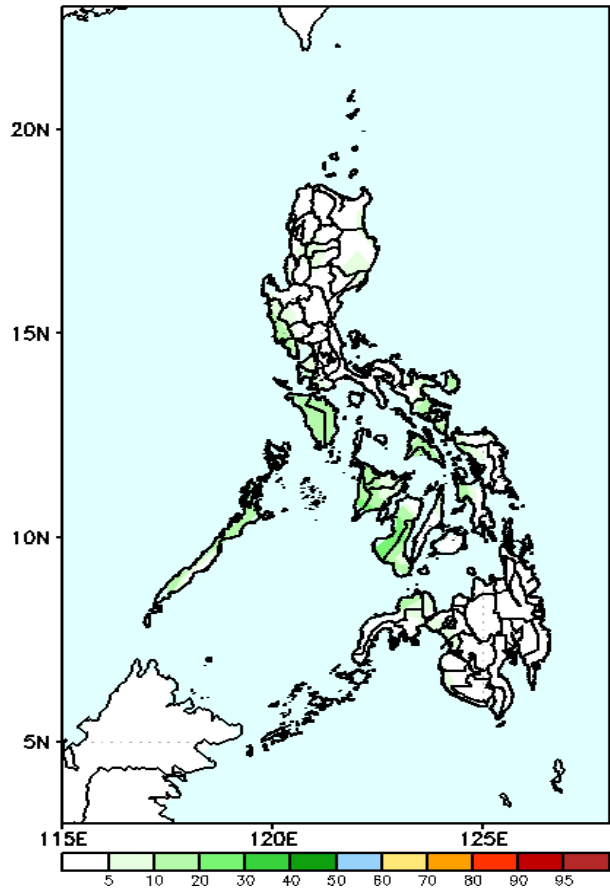
Low probability of rainfall to exceed 100mm in most parts of the country except Mindoro Occidental during the forecast period.

GEFS Week-2 Exceedance Prob. > 150mm
Valid: 20220720 - 20220726



Low probability of rainfall to exceed 150mm in most parts of the country during the forecast period.

GEFS Week-2 Exceedance Prob. > 200mm
Valid: 20220720 - 20220726



Low probability of rainfall to exceed 200mm in most parts of the country during the forecast period.