



**USAID**  
FROM THE AMERICAN PEOPLE



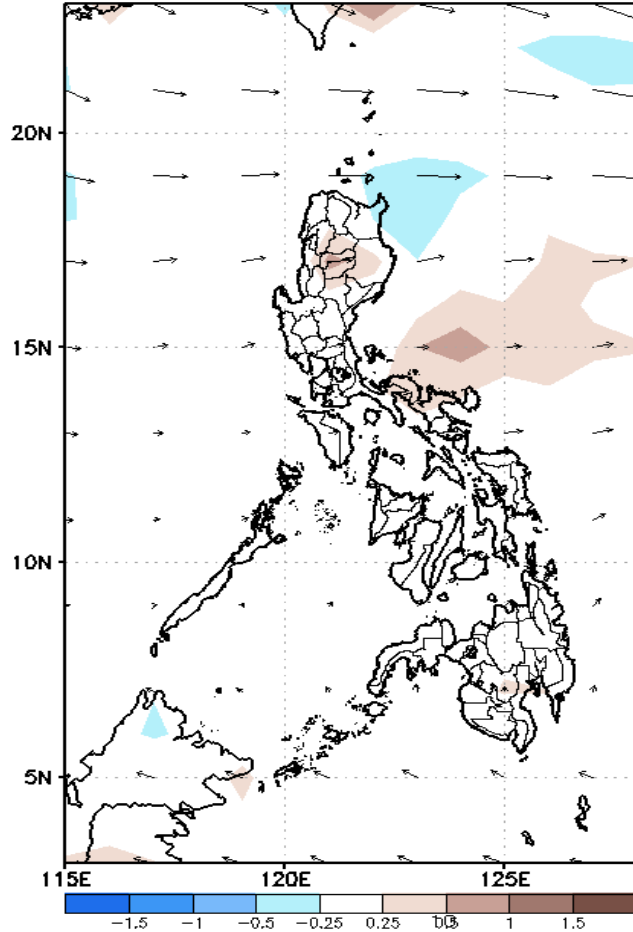
# Week 1 & Week 2 Forecast for the Philippines using GEFS Model



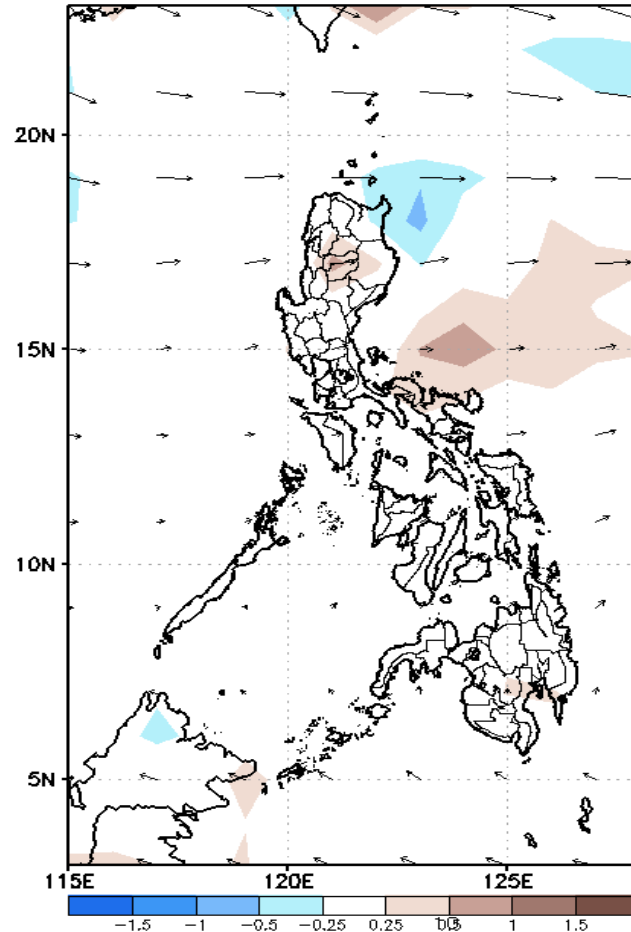
# GEFS Week-1 Forecasts: Divergence & Wind Anomaly

**Week 1: April 13- April 19, 2020**

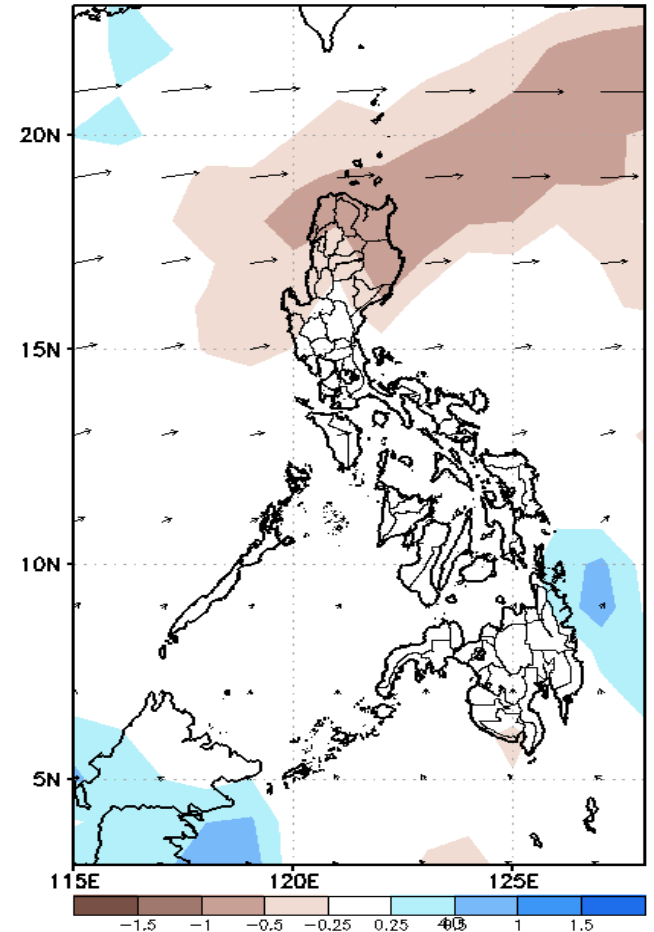
GEFS Week-1 850-hPa Divergence and Wind Anom  
Valid: 20200413 - 20200419



GEFS Week-1 700-hPa Divergence and Wind Anom  
Valid: 20200413 - 20200419



GEFS Week-1 200-hPa Divergence and Wind Anom  
Valid: 20200413 - 20200419

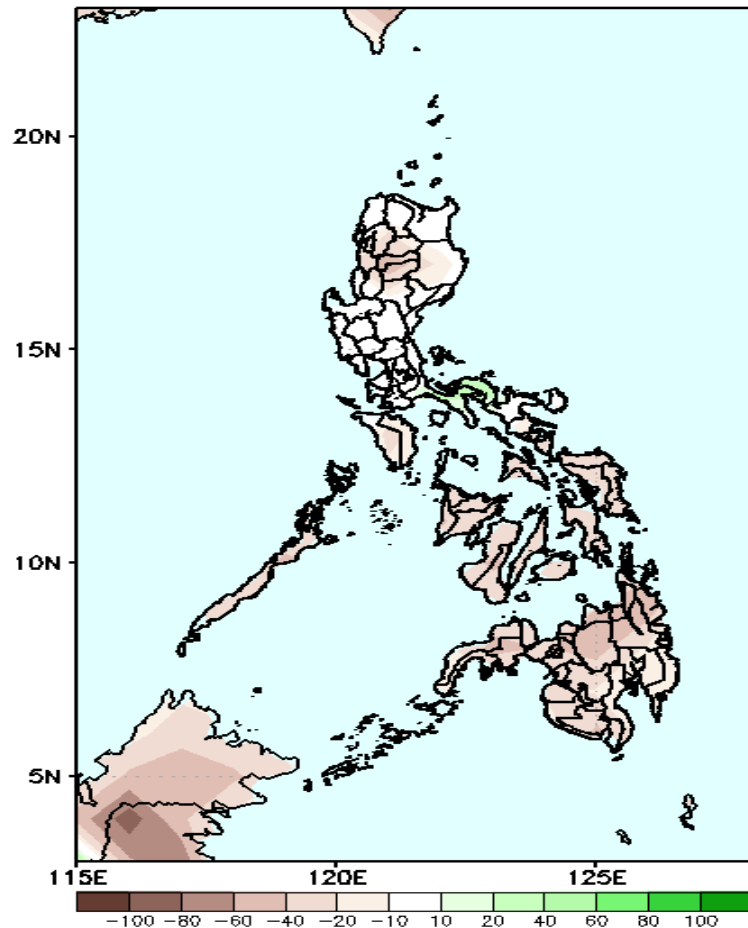


Low level (850 hPa) Divergence show likelihood of precipitation in northern and southern Luzon. Northeasterlies affecting northern Luzon while easterlies affecting most parts of the country during the forecast period.

# Precipitation Anomaly and Exceedance Probability > 25/50 mm

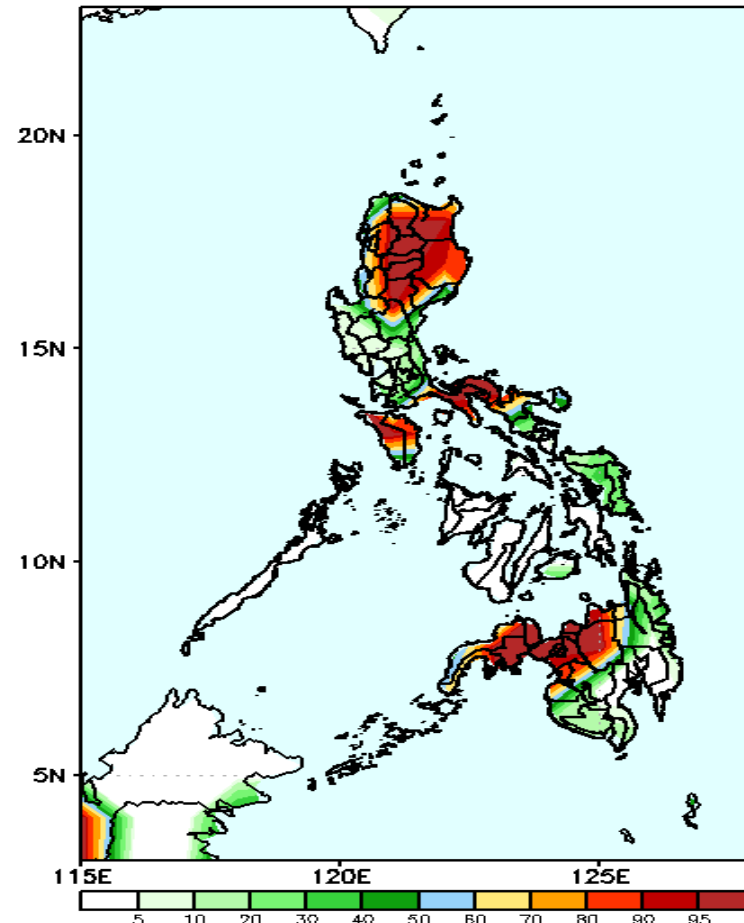
Week 1: April 13- April 19, 2020

GEFS Week-1 Precip Anomaly  
Valid: 20200413 - 20200419



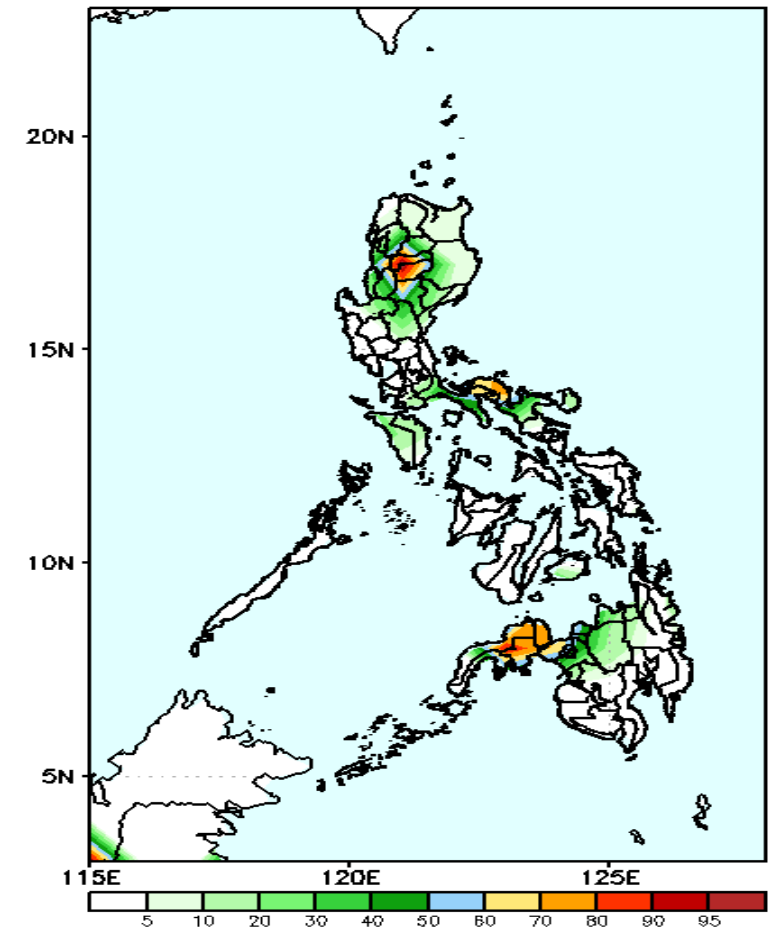
Rainfall deficit of 20-40mm is most likely in most parts of Visayas and Mindanao while Luzon will have rainfall deficit of up to 20 mm during the forecast period.

GEFS Week-1 Exceedance Prob. > 25mm  
Valid: 20200413 - 20200419



High probability of rainfall to exceed 25mm in northern and central Luzon, Mindoro, Quezon, Camarines Norte & Sur and northwestern part of Mindanao while less likely for the rest of the country during the forecast period.

GEFS Week-1 Exceedance Prob. > 50mm  
Valid: 20200413 - 20200419

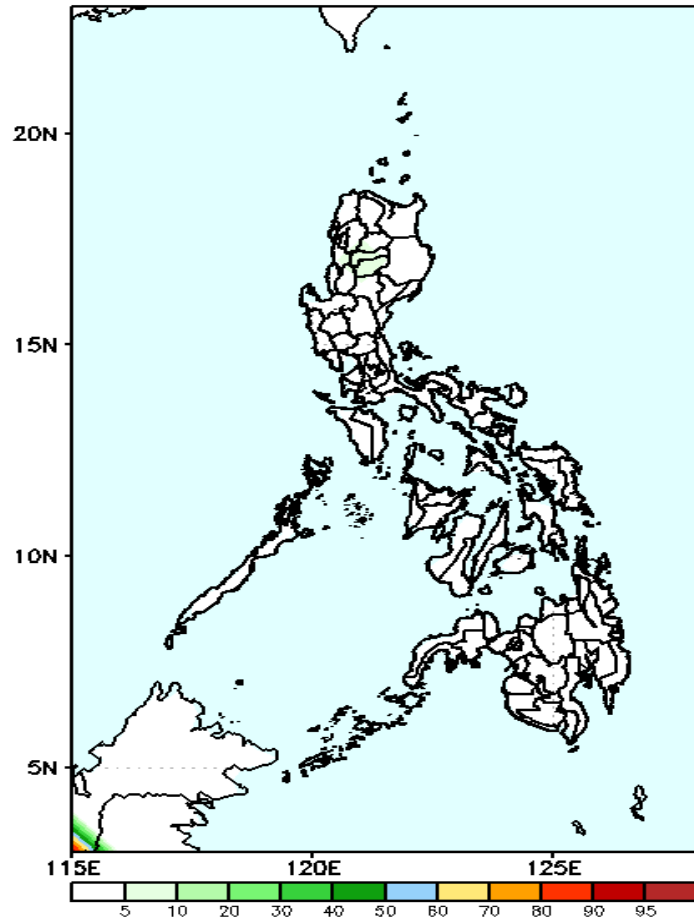


Less probability of rainfall to exceed 100mm in most parts of the country except in CAR, Camarines Norte and Zamboanga Peninsula where there is 60-90% chance during the forecast period.

# Exceedance Probability > 100/150/200 mm

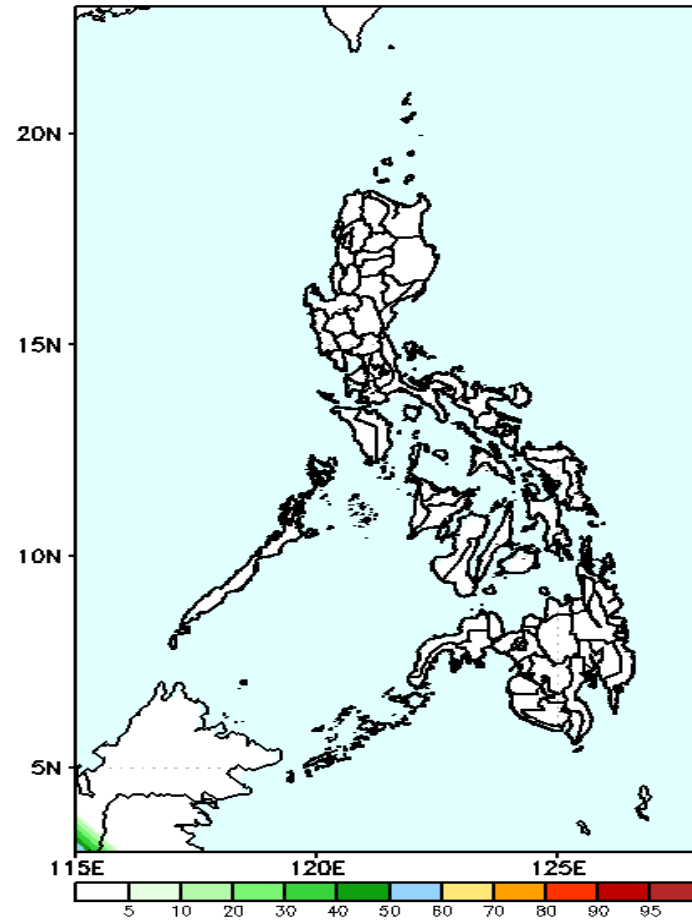
Week 1: April 13- April 19, 2020

GEFS Week-1 Exceedance Prob. > 100mm  
Valid: 20200413 - 20200419



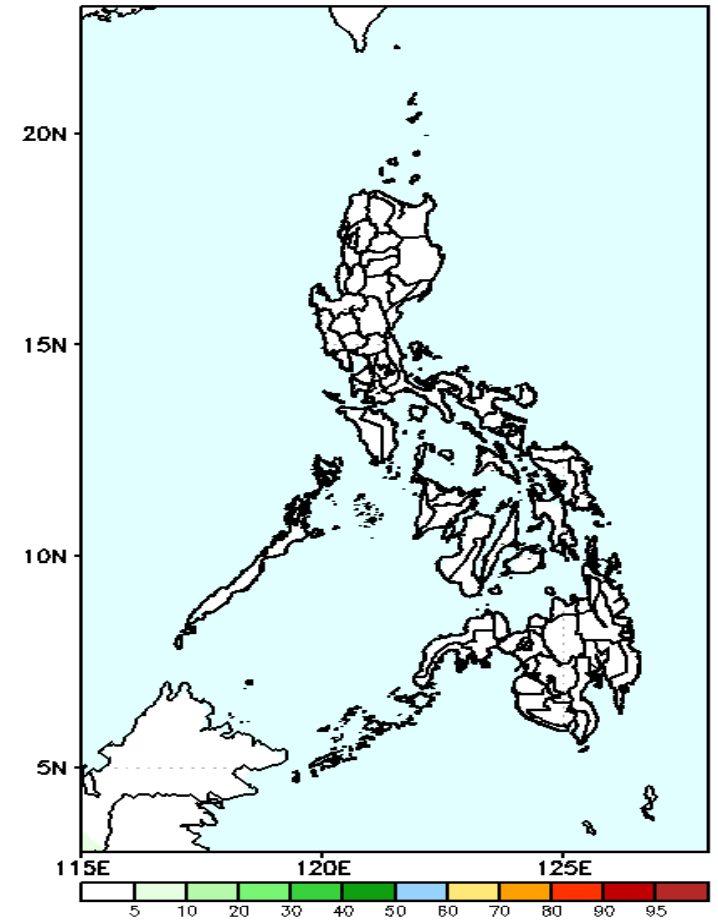
Less probability of rainfall to exceed 100mm in most parts of the country during the forecast period.

GEFS Week-1 Exceedance Prob. > 150mm  
Valid: 20200413 - 20200419



Less probability of rainfall to exceed 150mm in most parts of the country during the forecast period.

GEFS Week-1 Exceedance Prob. > 200mm  
Valid: 20200413 - 20200419

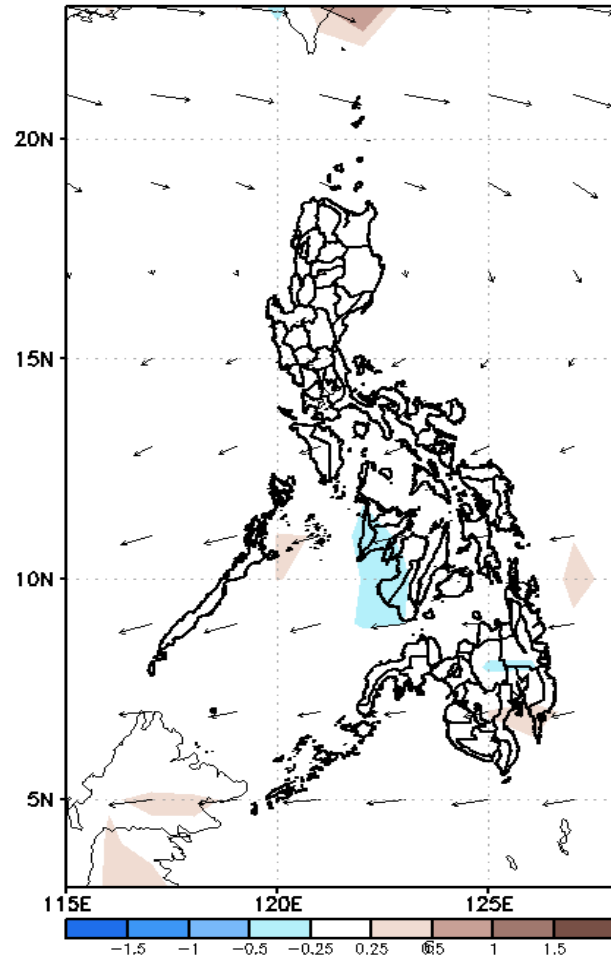


Less probability of rainfall to exceed 200mm in most parts of the country during the forecast period.

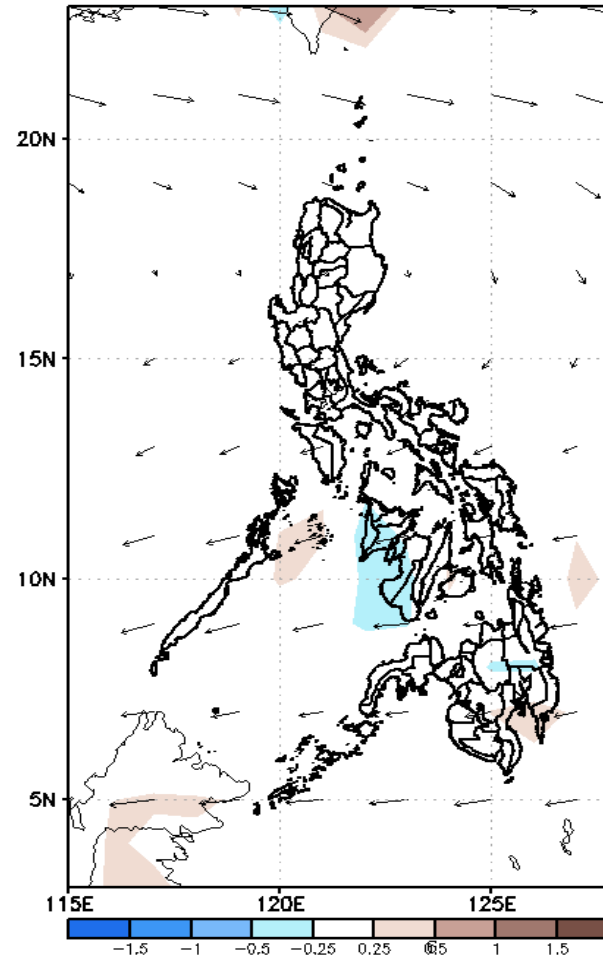
# GEFS Week-2 Forecasts: Divergence & Wind Anomaly

## Week 2: April 20- April 26, 2020

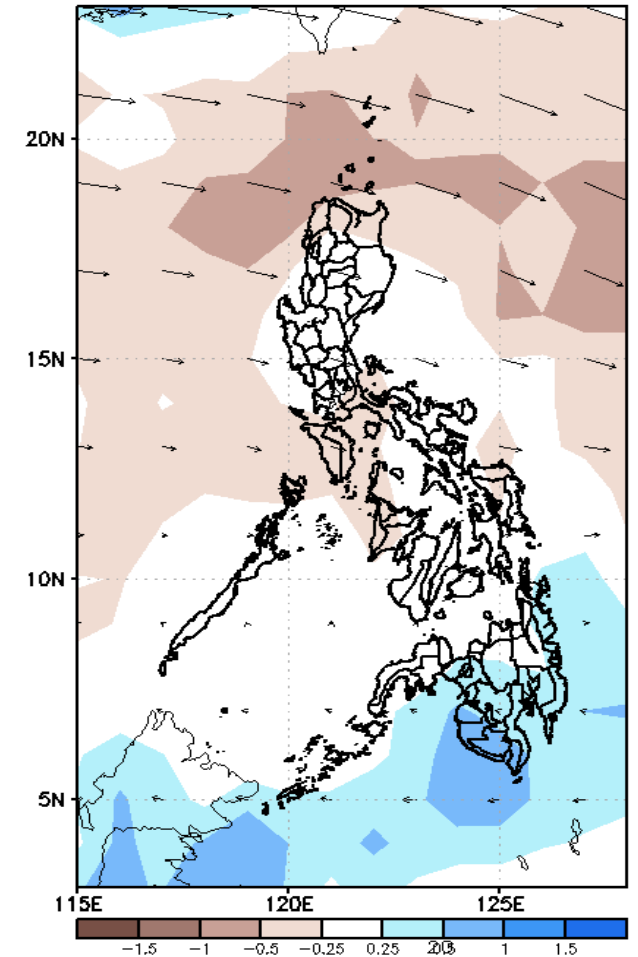
GEFS Week-2 850-hPa Divergence and Wind Anom  
Valid: 20200420 - 20200426



GEFS Week-2 700-hPa Divergence and Wind Anom  
Valid: 20200420 - 20200426



GEFS week-2 200-hPa Divergence and Wind Anom  
Valid: 20200420 - 20200426



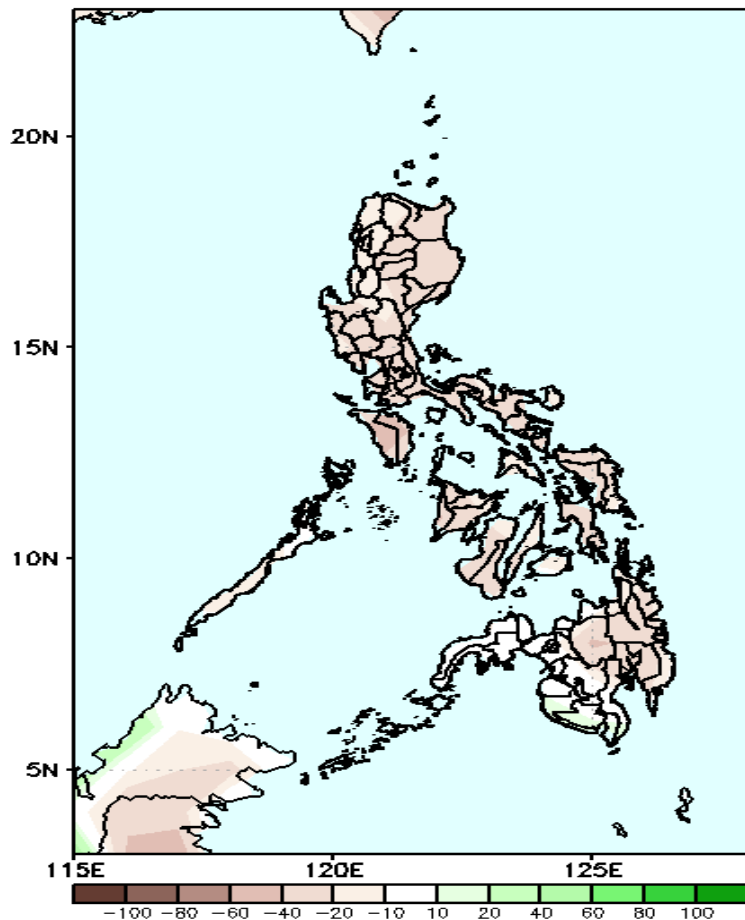
Low level (850 hPa) Divergence show likelihood of precipitation in some parts of Luzon and Mindanao due to localized thunderstorm. Easterlies affecting most parts of the country during the forecast period.



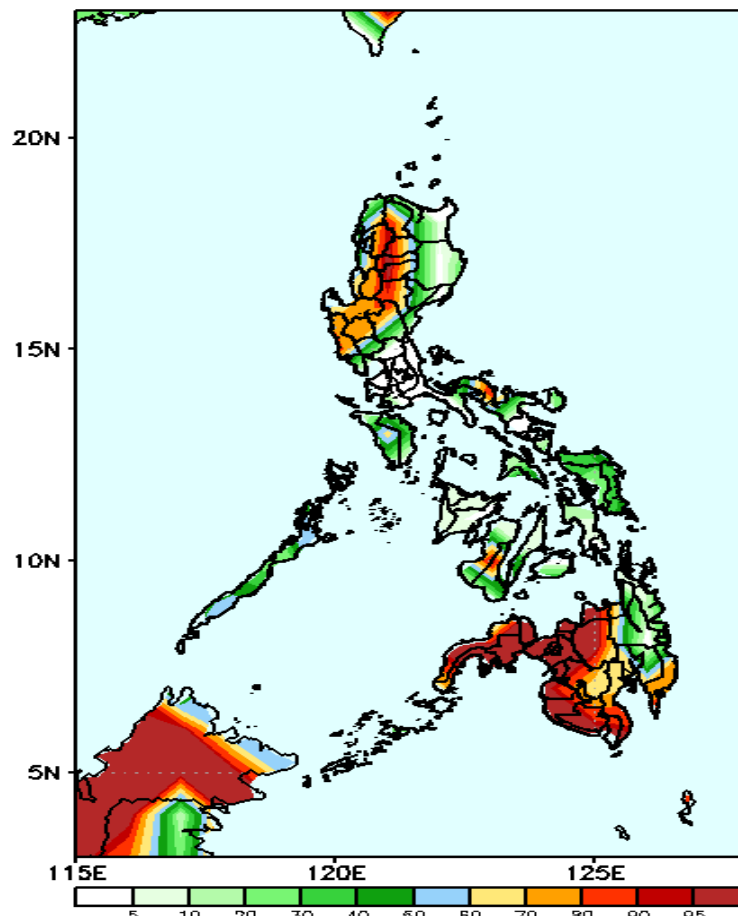
# Precipitation Anomaly and Exceedance Probability > 25/50 mm

Week 2: April 20- April 26, 2020

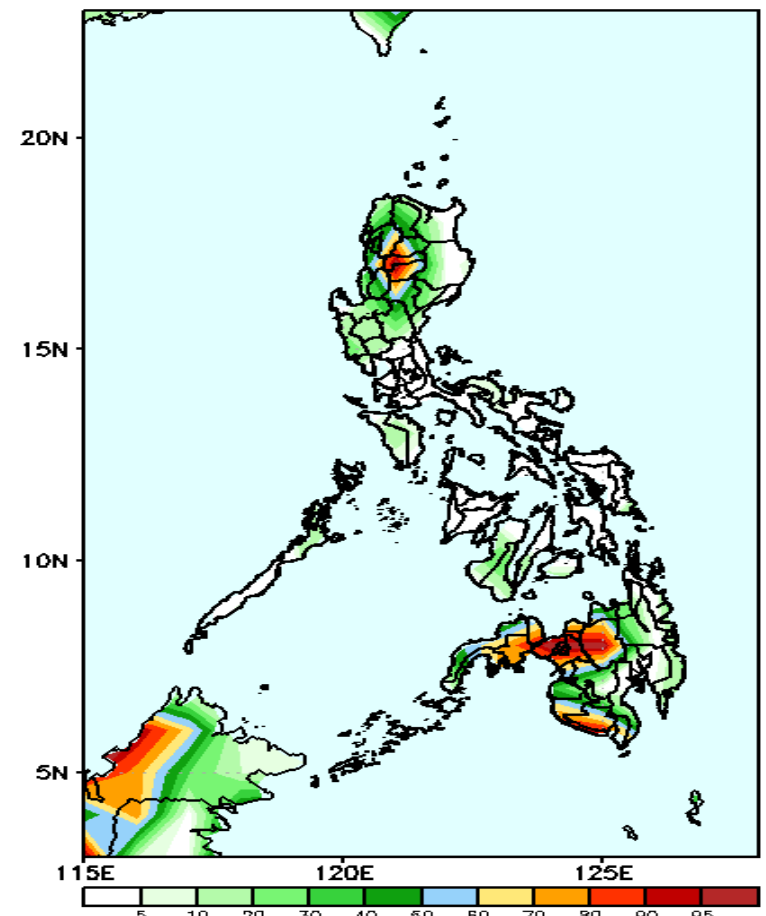
GEFS Week-2 Precip Anomaly  
Valid: 20200420 - 20200426



GEFS Week-2 Exceedance Prob. > 25mm  
Valid: 20200420 - 20200426



GEFS Week-2 Exceedance Prob. > 50mm  
Valid: 20200420 - 20200426



Rainfall deficit of 30-60mm is most likely in most parts of the country during the forecast period.

High probability of rainfall to exceed 25mm in western parts of Luzon and Mindanao while 40-60% probability for the rest of the country during the forecast period.

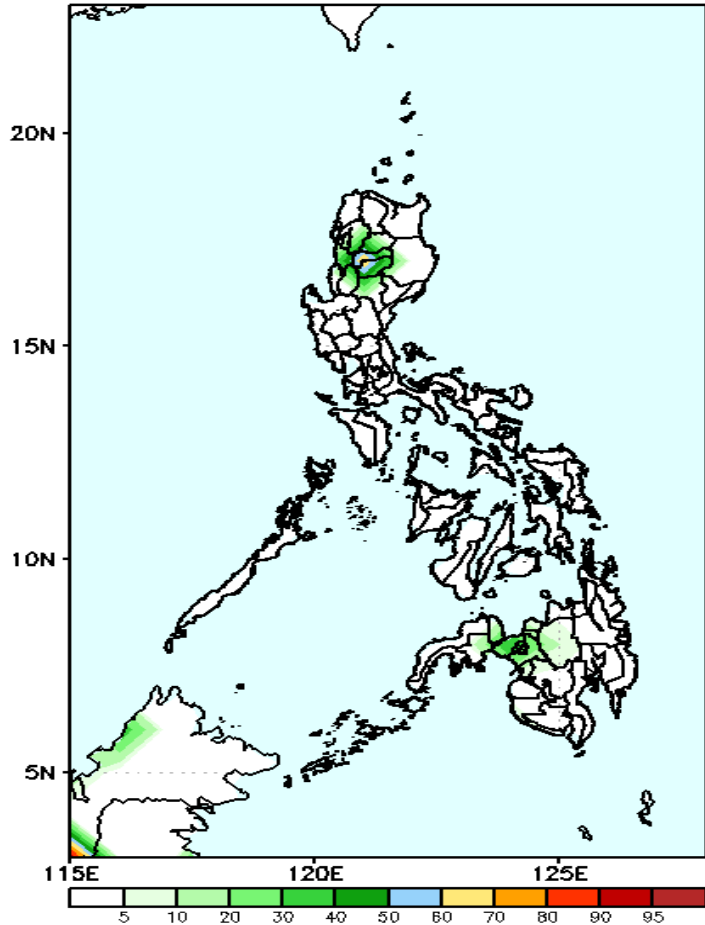
Less probability of rainfall to exceed 50mm in most parts of the country except in CAR, northern Mindanao and Zamboanga Peninsula where there is high probability during the forecast period.



# Exceedance Probability > 100/150/200 mm

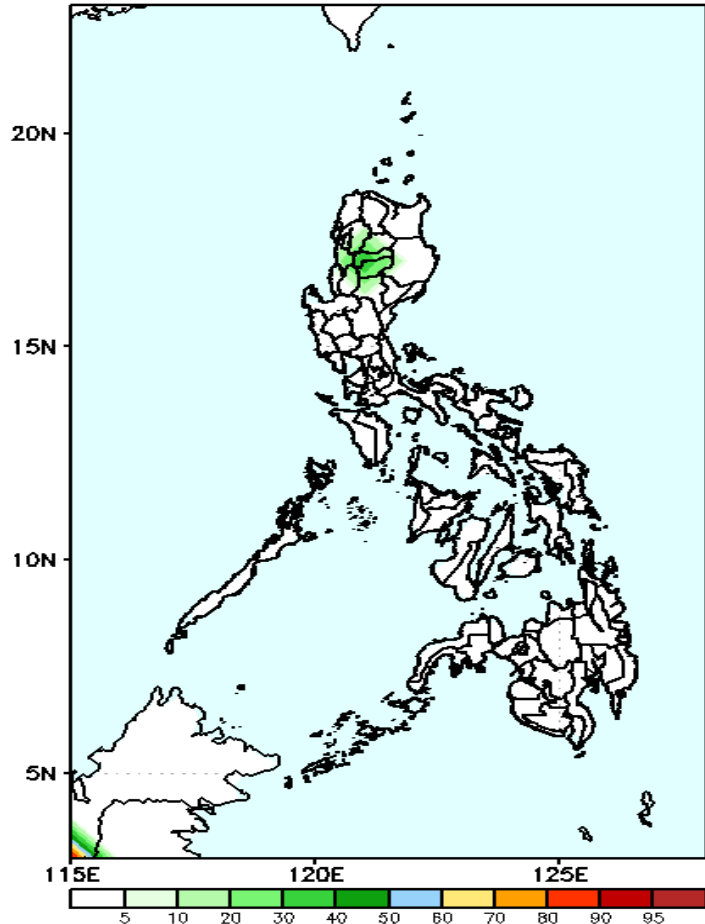
## Week 2: April 20- April 26, 2020

GEFS Week-2 Exceedance Prob. > 100mm  
Valid: 20200420 - 20200426



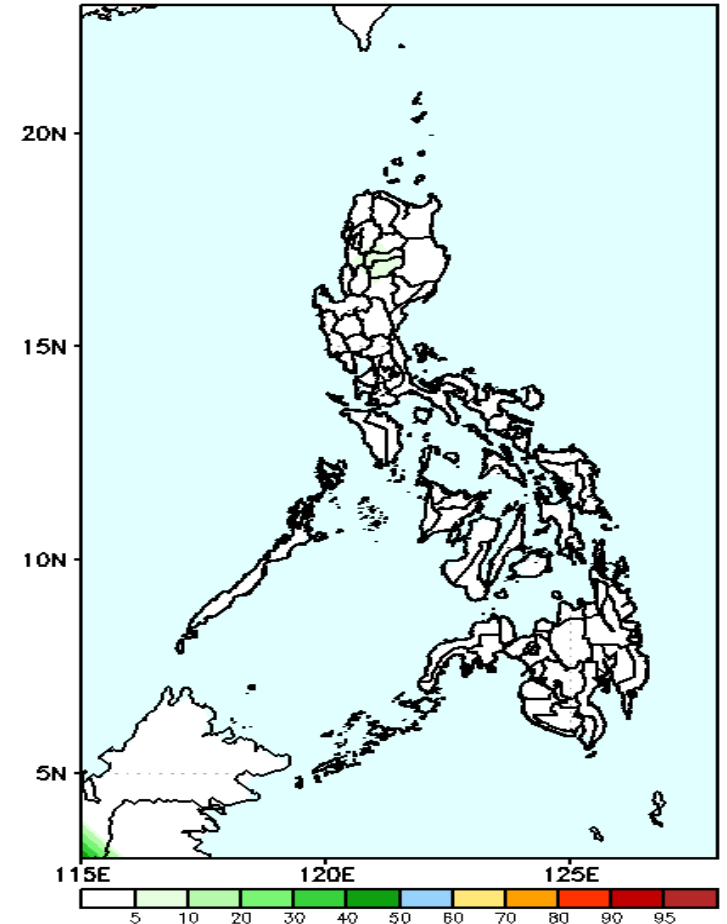
Less probability of rainfall to exceed 100mm in most parts of the country except in some areas in CAR, Ilocos region and northern Mindanao where there is 40-60% chance during the forecast period.

GEFS Week-2 Exceedance Prob. > 150mm  
Valid: 20200420 - 20200426



Less probability of rainfall to exceed 150 mm in most parts of the country during the forecast period.

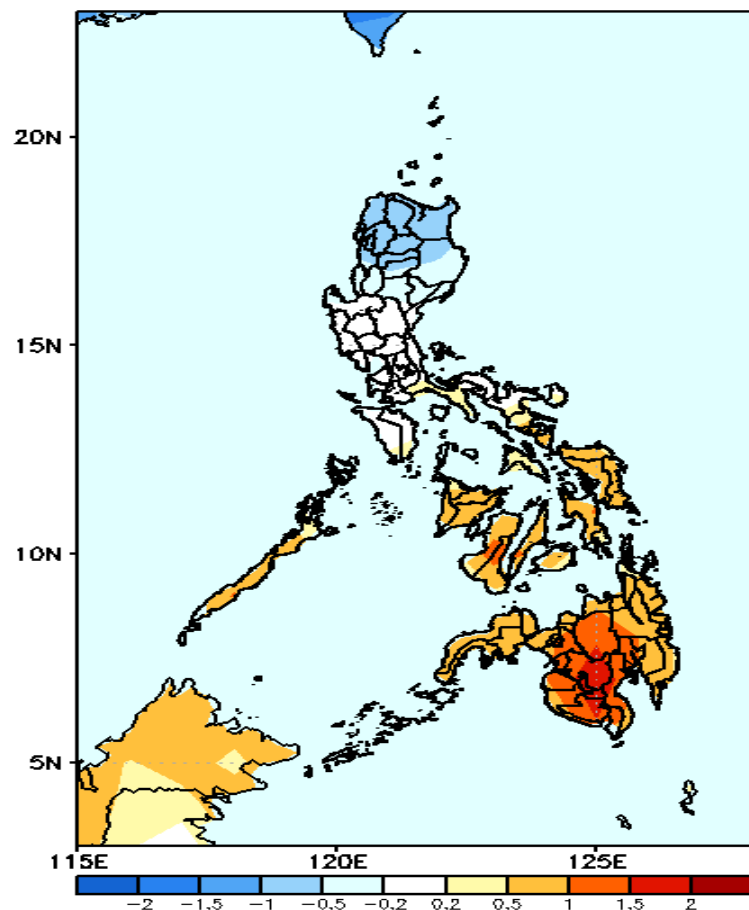
GEFS Week-2 Exceedance Prob. > 200mm  
Valid: 20200420 - 20200426



Less probability of rainfall to exceed 200 mm in most parts of the country during the forecast period.

# GEFS Week-1 & 2 Forecasts: T2m Anomaly

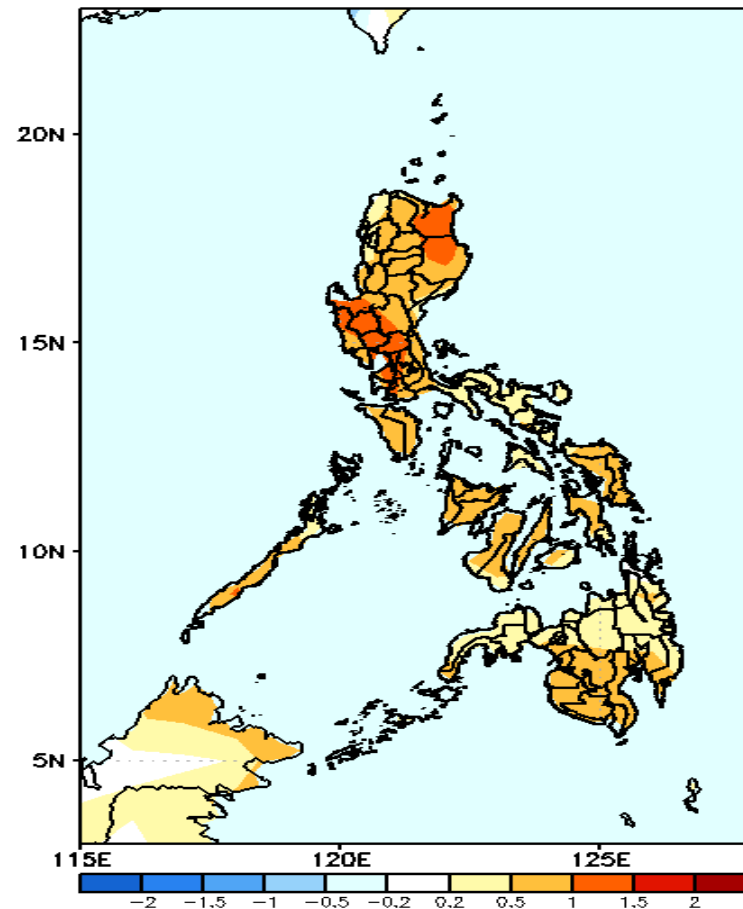
GEFS Week-1 T2m Anomaly  
Valid: 20200413 - 20200419



## 2m Temperature Week 1: April 13- April 19, 2020

Slightly cooler to cooler average surface air temperature will likely experience in northern Luzon while average temperature for the rest of Luzon. Moreover, slightly warmer to warmer than average surface air temperature in Visayas and Mindanao will be experience during the forecast period.

GEFS Week-2 T2m Anomaly  
Valid: 20200420 - 20200426



## 2m Temperature Week 2: April 20- April 26, 2020

Slightly warmer to warmer than average surface air temperature will likely experience in most parts of the country is expected during the forecast period.