



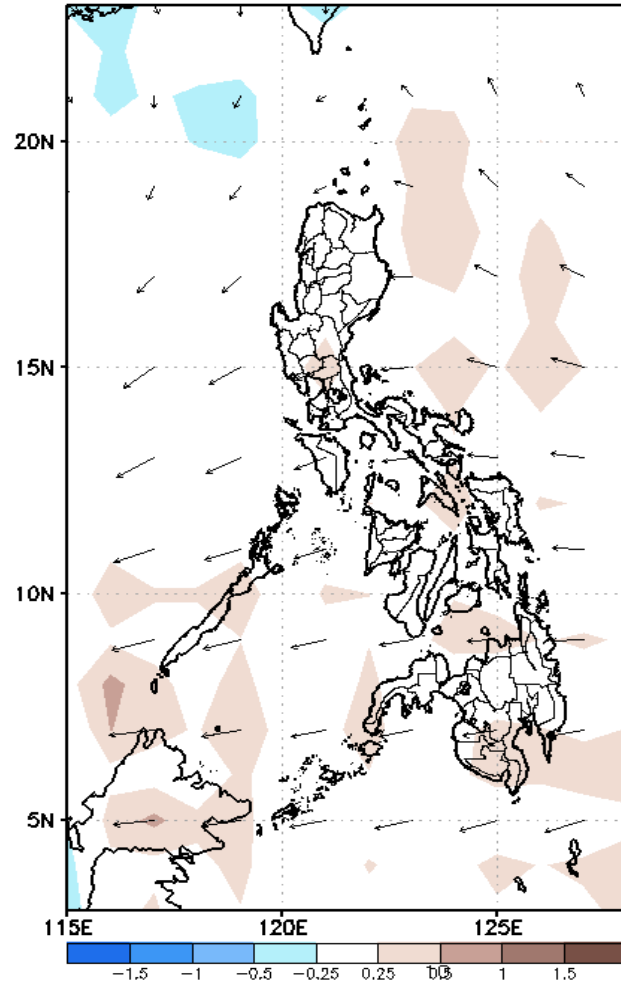
# Week 1 & Week 2 Forecast for the Philippines using GEFS Model



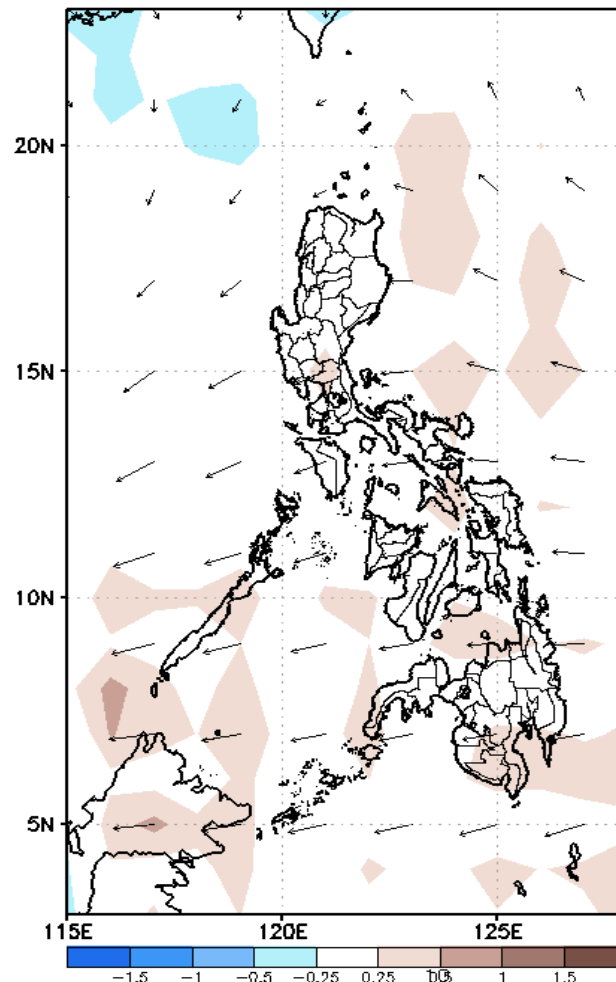
# GEFS Week-1 Forecasts: Divergence & Wind Anomaly

**Week 1: July 13-19, 2020**

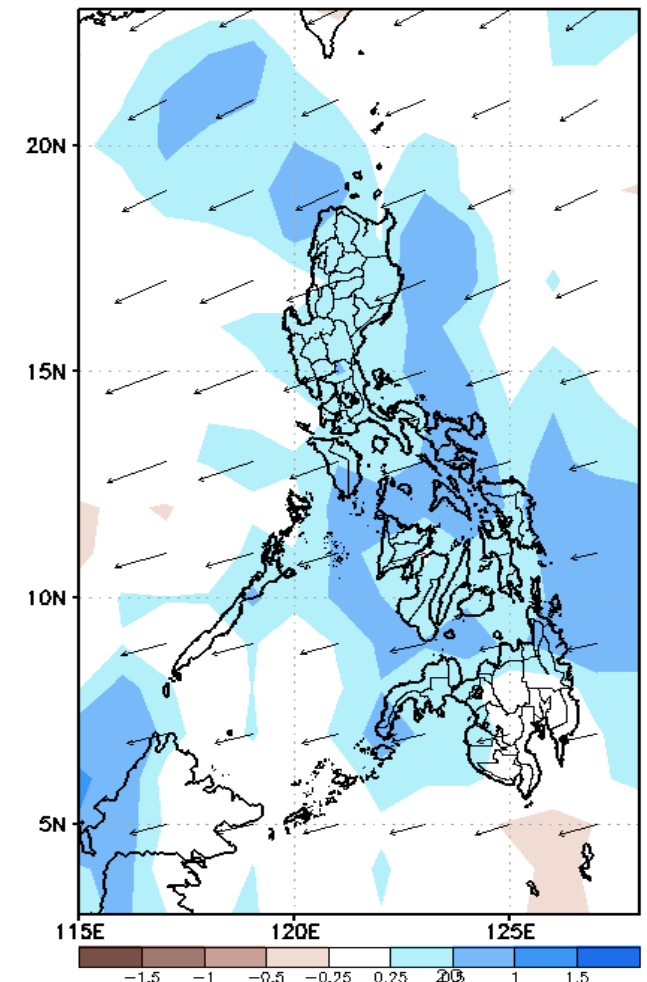
GEFS Week-1 850-hPa Divergence and Wind Anom  
Valid: 20200713 - 20200719



GEFS Week-1 700-hPa Divergence and Wind Anom  
Valid: 20200713 - 20200719



GEFS Week-1 200-hPa Divergence and Wind Anom  
Valid: 20200713 - 20200719

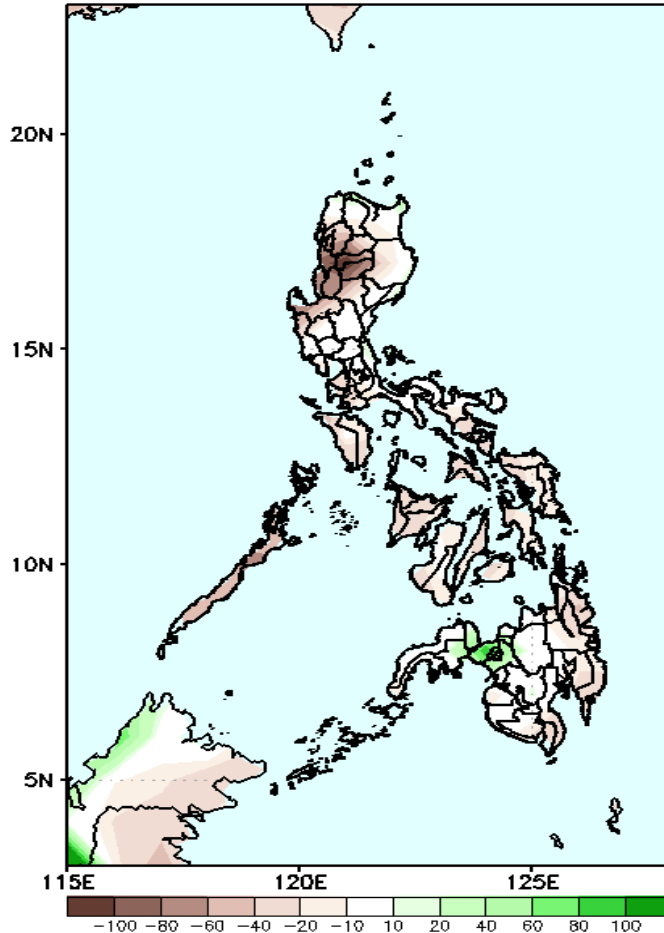


Upper level (200 hPa) Divergence suggest likelihood of precipitation in most parts of the country. Easterlies affecting most parts of the country during the forecast period.

# Precipitation Anomaly and Exceedance Probability > 25/50 mm

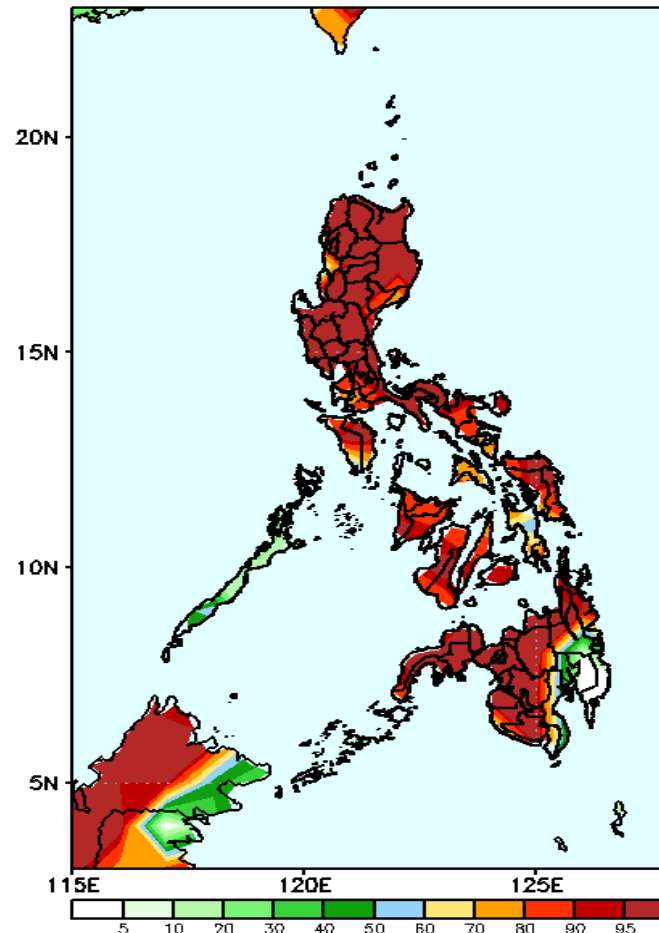
**Week 1: July 13-19, 2020**

GEFS Week-1 Precip Anomaly  
Valid: 20200713 - 20200719



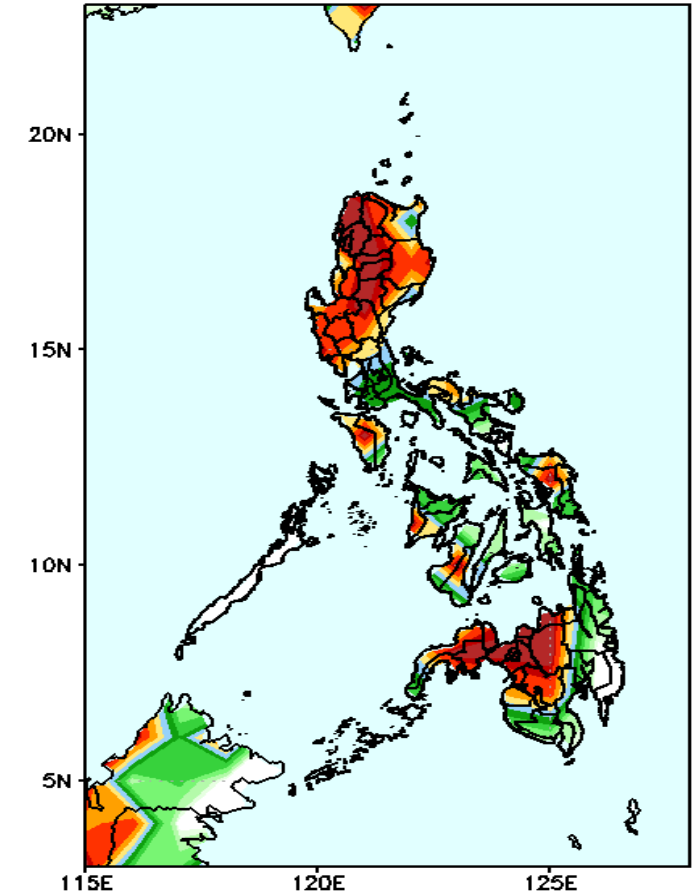
Rainfall deficit of 30-100 mm Cordillera Region and Ilocos Sur is expected while increase of rainfall of up to 40mm in Lanao del Norte during the forecast period.

GEFS Week-1 Exceedance Prob. > 25mm  
Valid: 20200713 - 20200719



High probability of rainfall to exceed 25mm in most parts the country except in Davao Region during the forecast period.

GEFS Week-1 Exceedance Prob. > 50mm  
Valid: 20200713 - 20200719

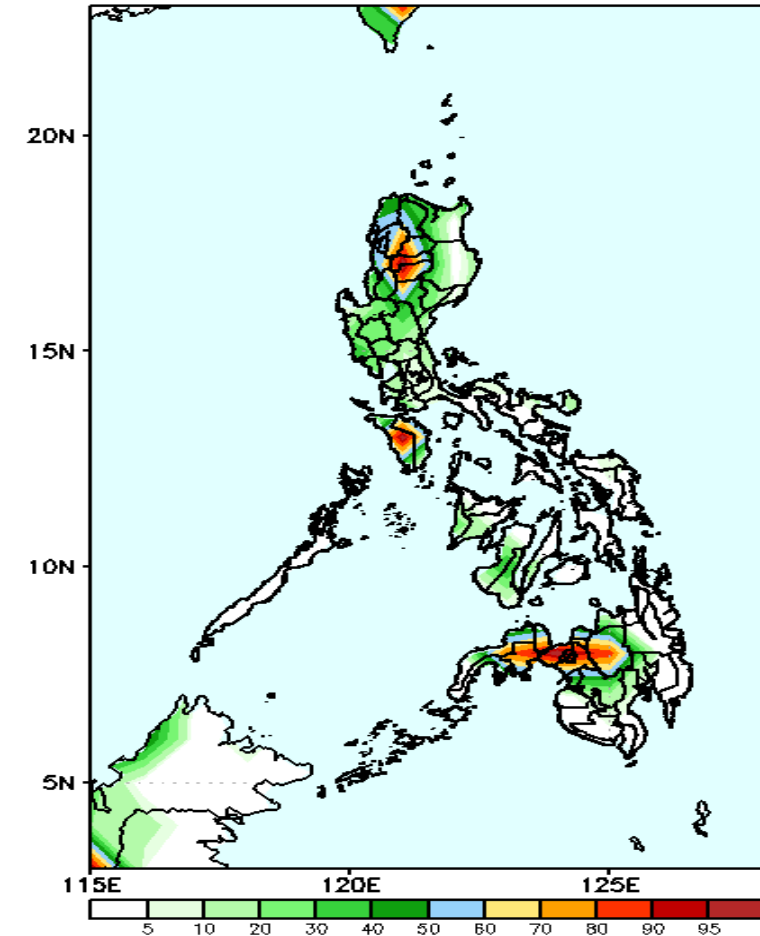


High probability of rainfall to exceed 50mm in most parts of Luzon, Samar, western Visayas and northwestern parts of Mindanao while less likely for the rest of the country during the forecast period.

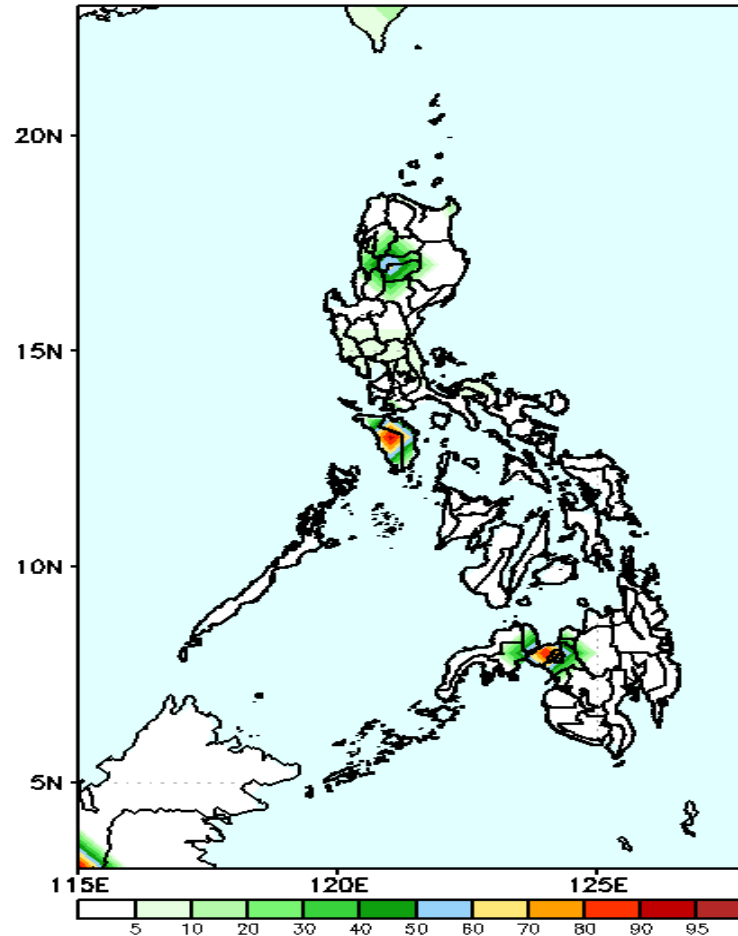
# Exceedance Probability > 100/150/200 mm

## Week 1: July 13-19, 2020

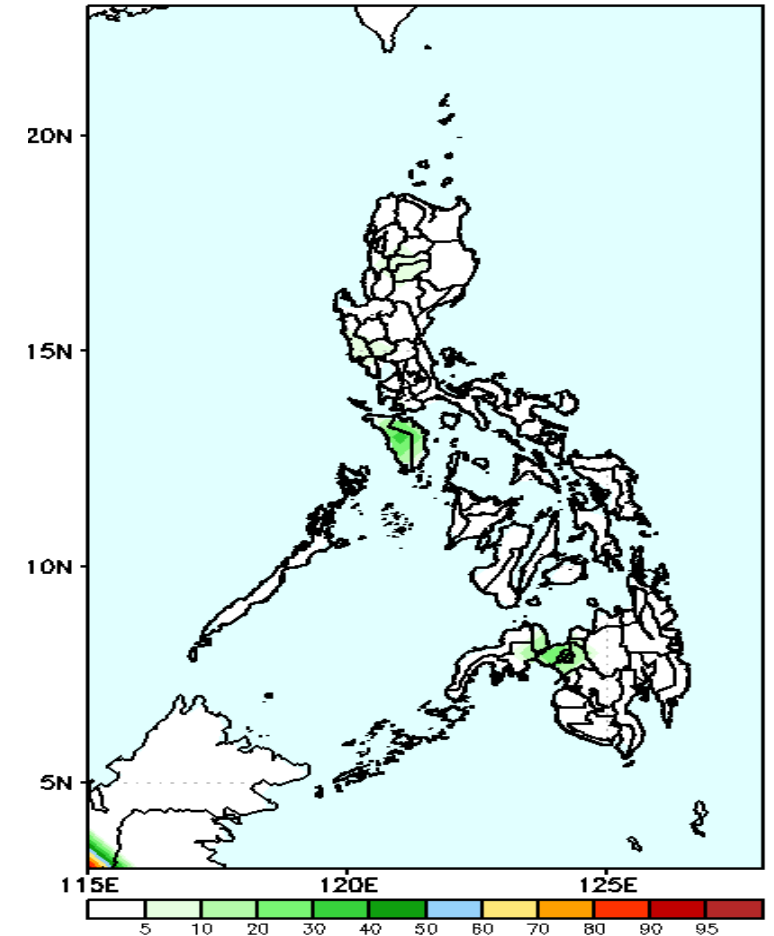
GEFS Week-1 Exceedance Prob. > 100mm    GEFS Week-1 Exceedance Prob. > 150mm    GEFS Week-1 Exceedance Prob. > 200mm  
Valid: 20200713 – 20200719    Valid: 20200713 – 20200719    Valid: 20200713 – 20200719



High probability of rainfall to exceed 100mm in Cordillera Region, Mindoro and in northwestern parts of Mindanao while less likely for the rest of the country during the forecast period.



40-90% probability of rainfall to exceed 150mm in Mindoro and Lanao del Norte while less likely for the rest of the country during the forecast period.



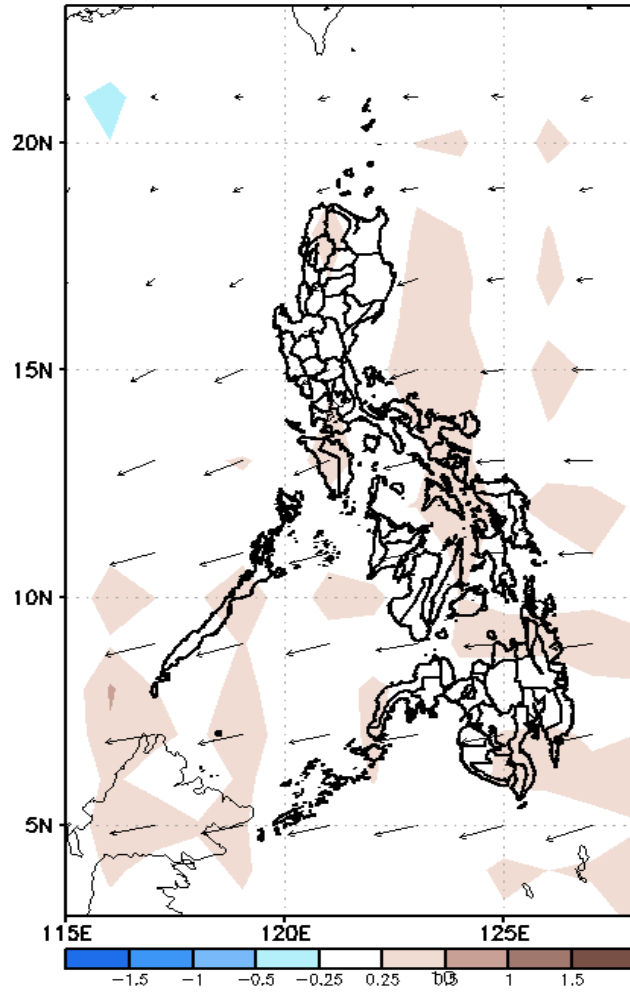
Less probability of rainfall to exceed 200mm in most parts of the country during the forecast period.



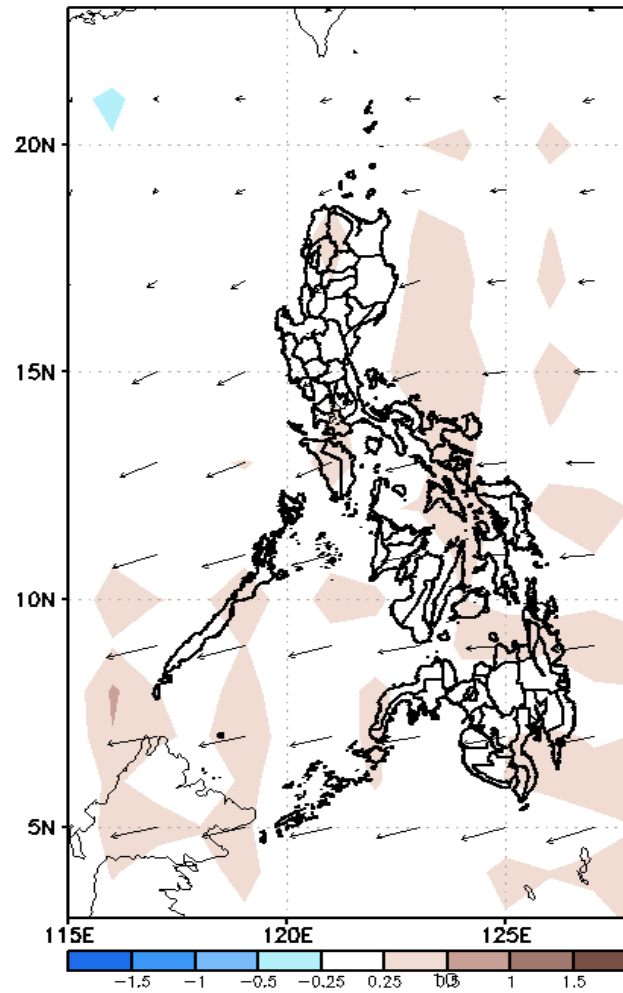
# GEFS Week-2 Forecasts: Divergence & Wind Anomaly

Week 2: Jul 20-26, 2020

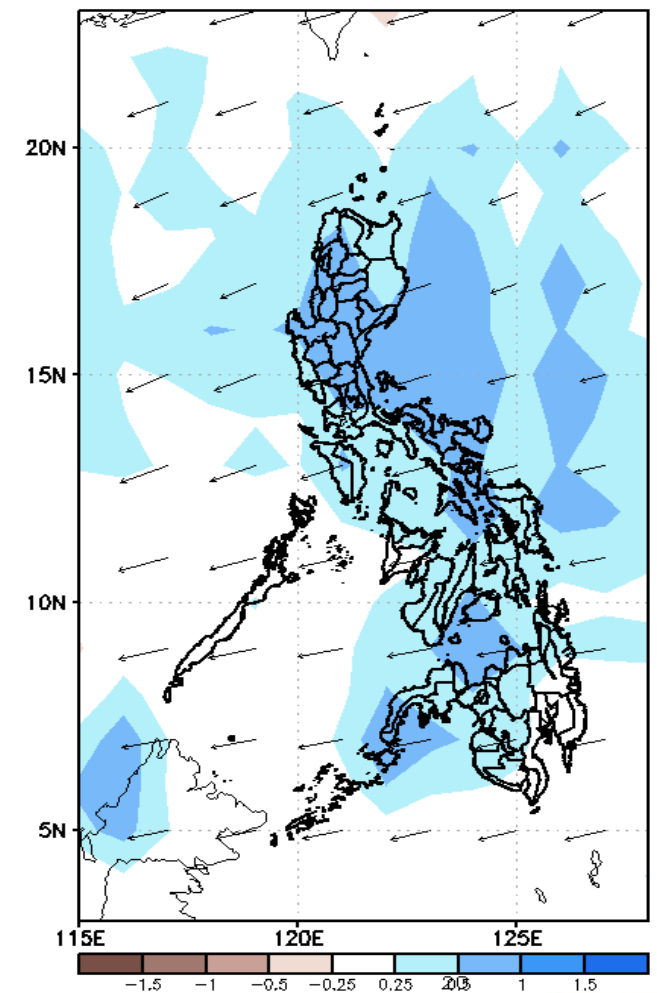
GEFS Week-2 850-hPa Divergence and Wind Anom  
Valid: 20200720 - 20200726



GEFS Week-2 700-hPa Divergence and Wind Anom  
Valid: 20200720 - 20200726



GEFS week-2 200-hPa Divergence and Wind Anom  
Valid: 20200720 - 20200726



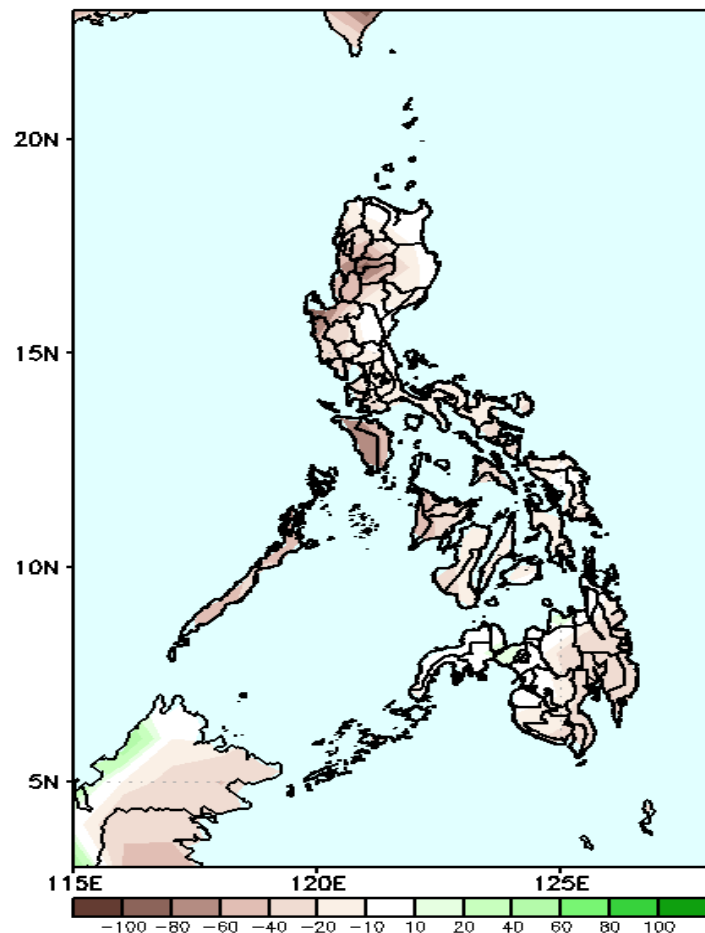
Upper level (200 hPa) Divergence suggest likelihood of precipitation in most parts of the country. Easterlies affecting most parts of the country during the forecast period.



# Precipitation Anomaly and Exceedance Probability > 25/50 mm

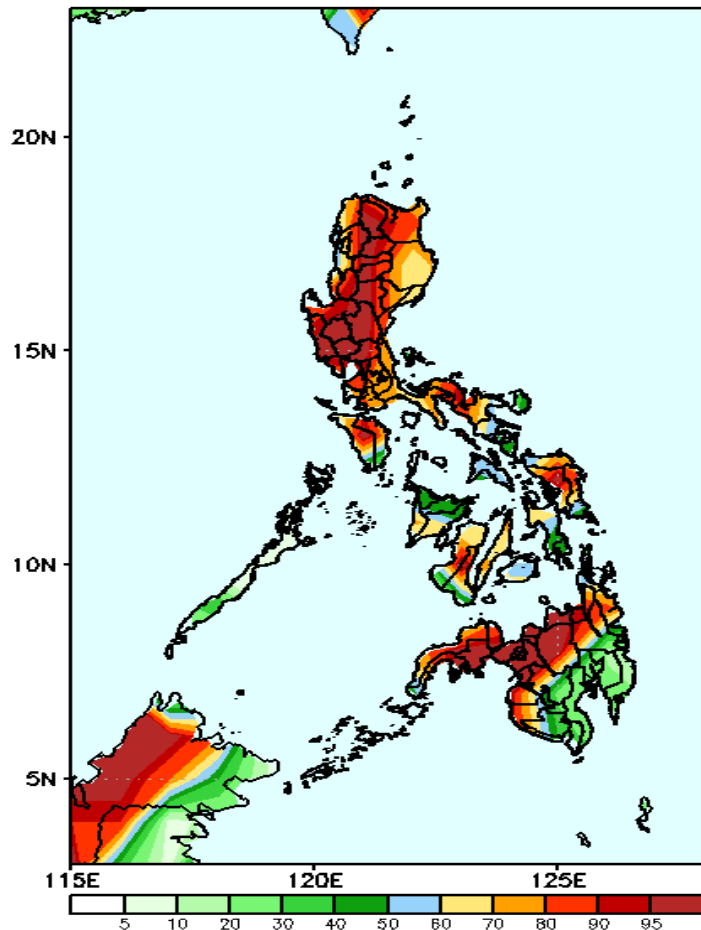
**Week 2: Jul 20-26, 2020**

GEFS Week-2 Precip Anomaly  
Valid: 20200720 - 20200726



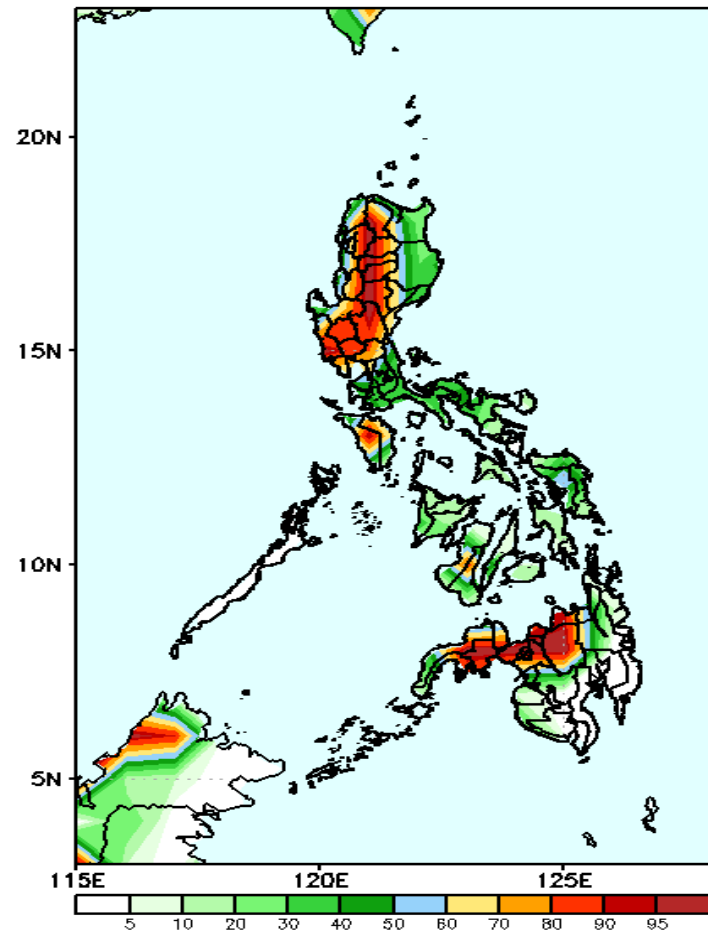
Rainfall deficit of 20-80mm is expected in most parts of the country during the forecast period.

GEFS Week-2 Exceedance Prob. > 25mm  
Valid: 20200720 - 20200726



High probability of rainfall to exceed 25mm in most parts of the country is expected except in the southern parts of Mindanao where less likely during the forecast period.

GEFS Week-2 Exceedance Prob. > 50mm  
Valid: 20200720 - 20200726

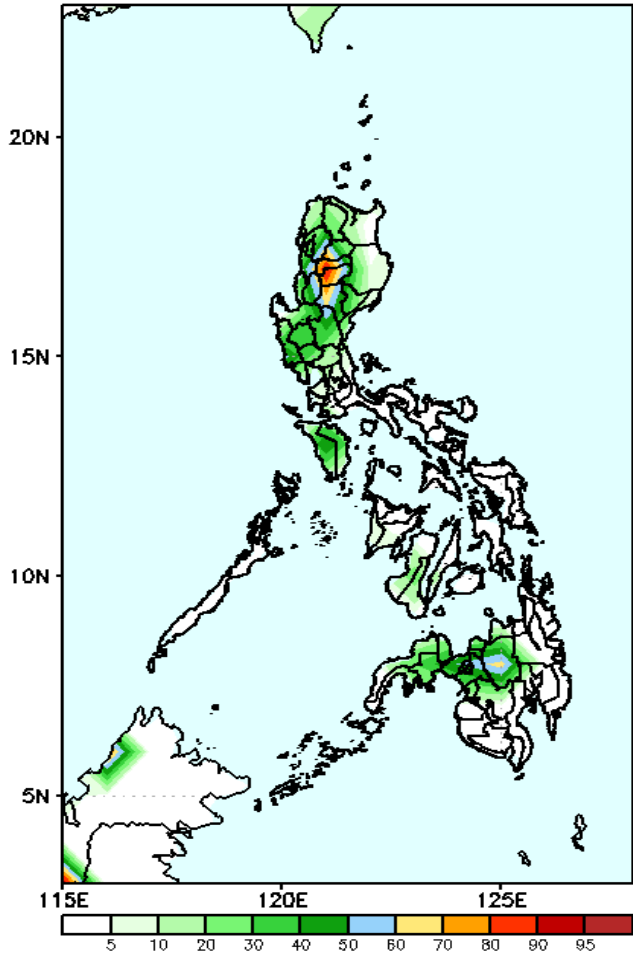


High probability of rainfall to exceed 50mm in most parts of western and central Luzon, Mindoro and in northern Mindanao and Zamboanga provinces while less likely for the rest of the country during the forecast period.

# Exceedance Probability > 100/150/200 mm

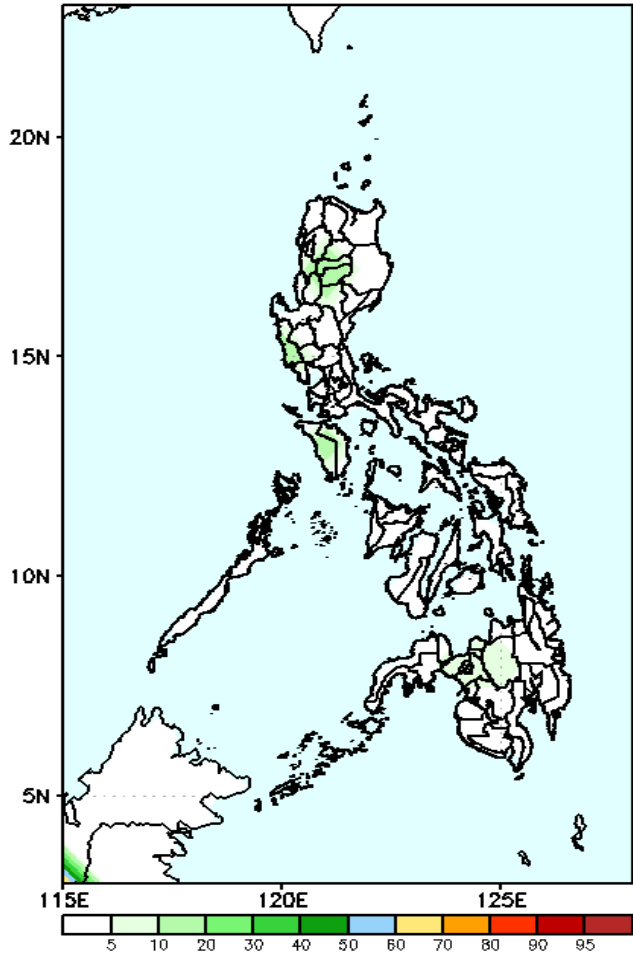
## Week 2: Jul 20-26, 2020

GEFS Week-2 Exceedance Prob. > 100mm  
Valid: 20200720 - 20200726



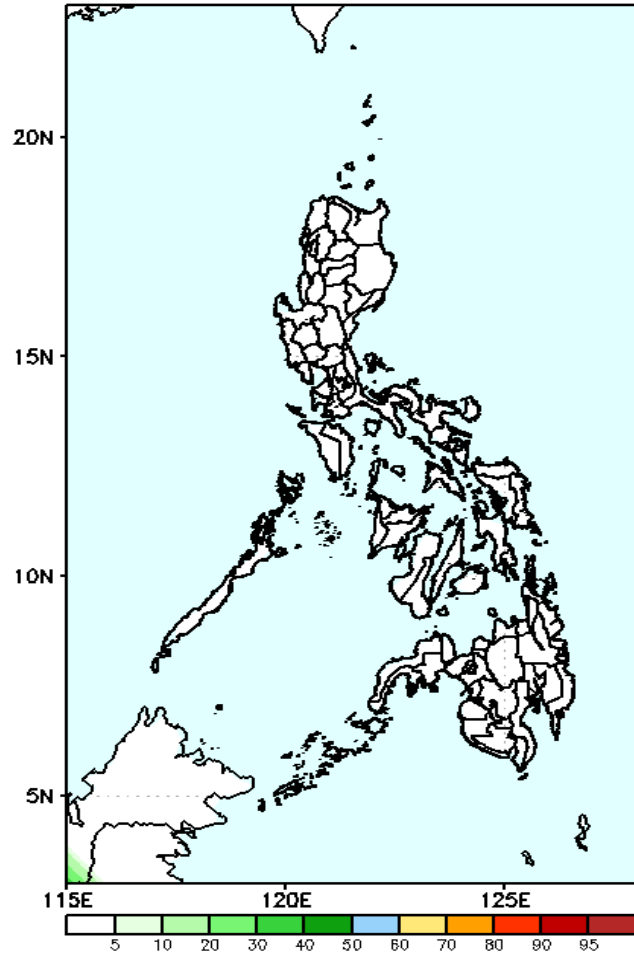
50-90% probability of rainfall to exceed 100mm in Cordillera Region and Bukidnon while less likely for the rest of the country during the forecast period.

GEFS Week-2 Exceedance Prob. > 150mm  
Valid: 20200720 - 20200726



Less probability of rainfall to exceed 150mm in most parts of the country during the forecast period.

GEFS Week-2 Exceedance Prob. > 200mm  
Valid: 20200720 - 20200726

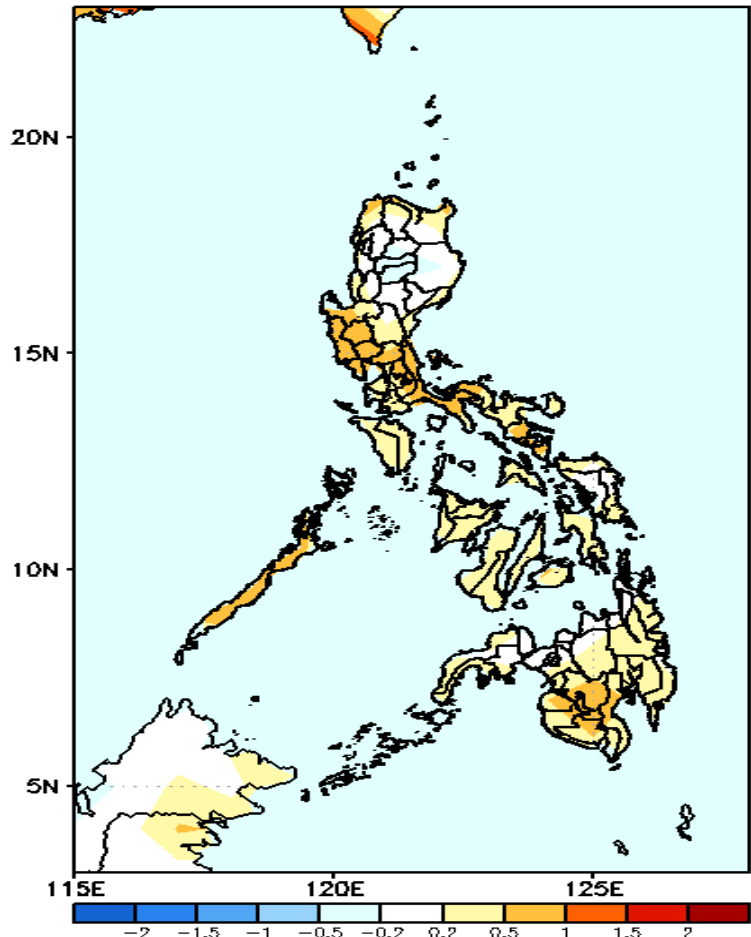


Less probability of rainfall to exceed 200mm in most parts of the country during the forecast period.



# GEFS Week-1 & 2 Forecasts: T2m Anomaly

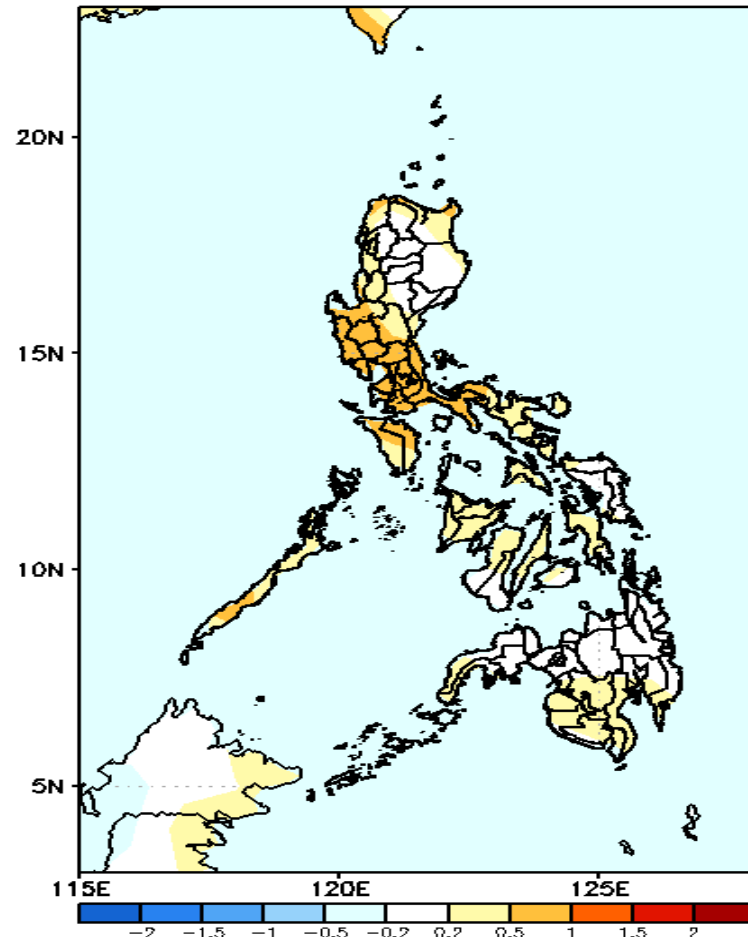
GEFS Week-1 T2m Anomaly  
Valid: 20200713 - 20200719



**2m Temperature Week 1: July 13-19, 2020**

Slightly warmer to warmer than average surface air temperature will likely experience in southern parts of Luzon while average to slightly warmer than average temperature for the rest country during the forecast period.

GEFS Week-2 T2m Anomaly  
Valid: 20200720 - 20200726



**2m Temperature Week 2: Jul 20-26, 2020**

Slightly warmer to warmer than average surface air temperature will likely experience in southern parts of Luzon while average to slightly warmer than average temperature for the rest country during the forecast period.