



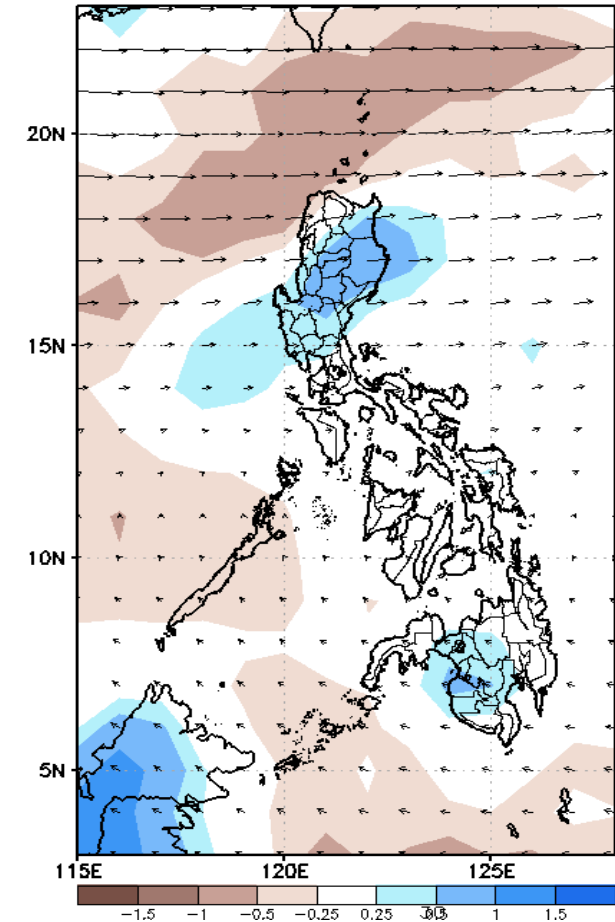
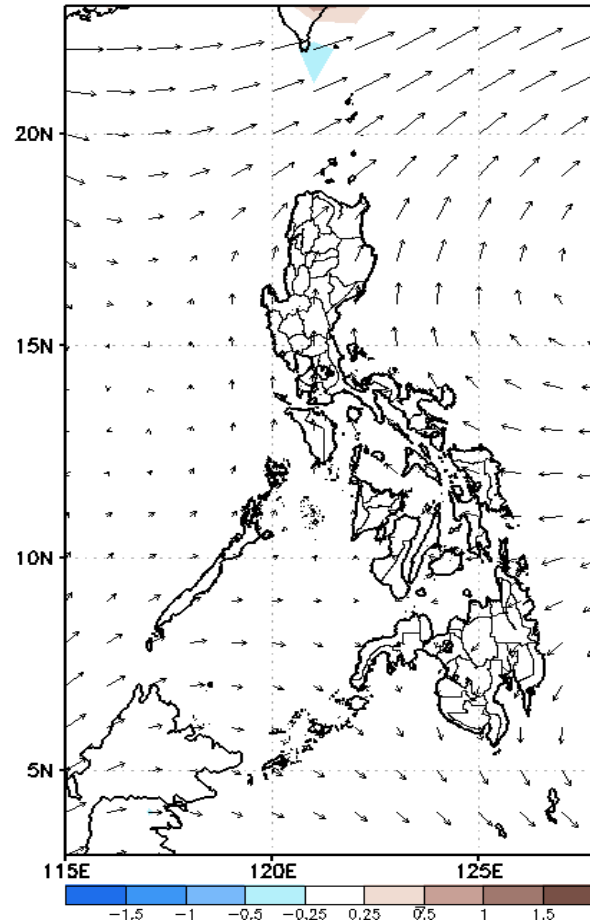
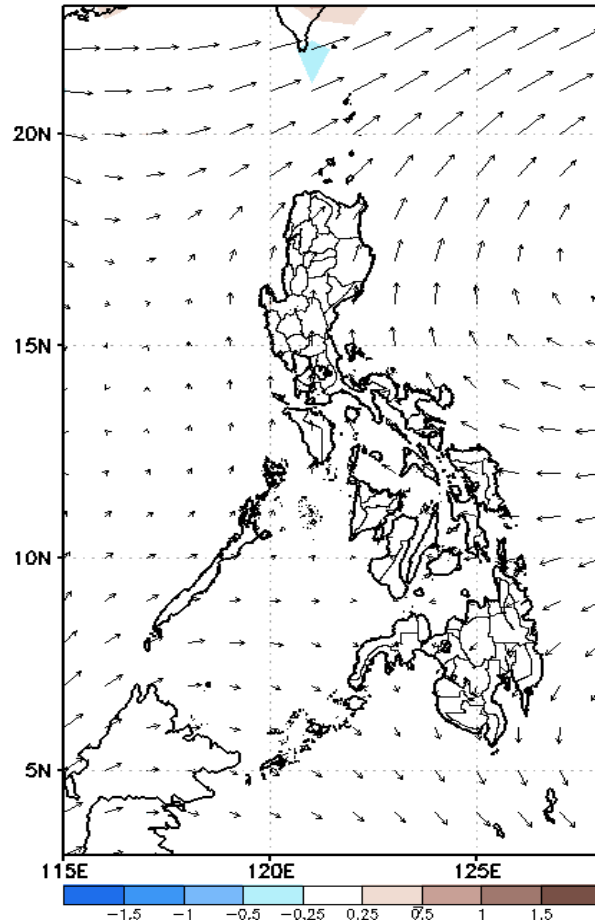
# Week 1 & Week 2 Forecast for the Philippines using GEFS Model



# GEFS Week-1 Forecasts: Wind Anomaly Forecast

Week 1: Apr 14-20, 2023

GEFS Week-1 850-hPa Divergence and Wind Anom  
Valid: 20230414 - 20230420



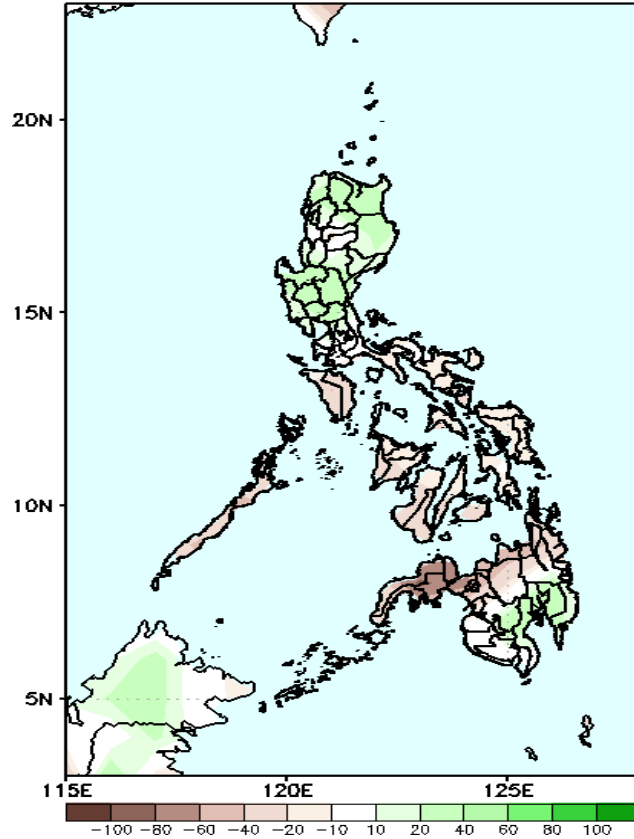
Easterlies is forecasted to affect most parts of the country; expect dry and hot weather during the forecast period.

# Precipitation Anomaly and Exceedance Probability > 25/50 mm

- Very high probability
- High Probability
- Moderate Probability
- Low Probability

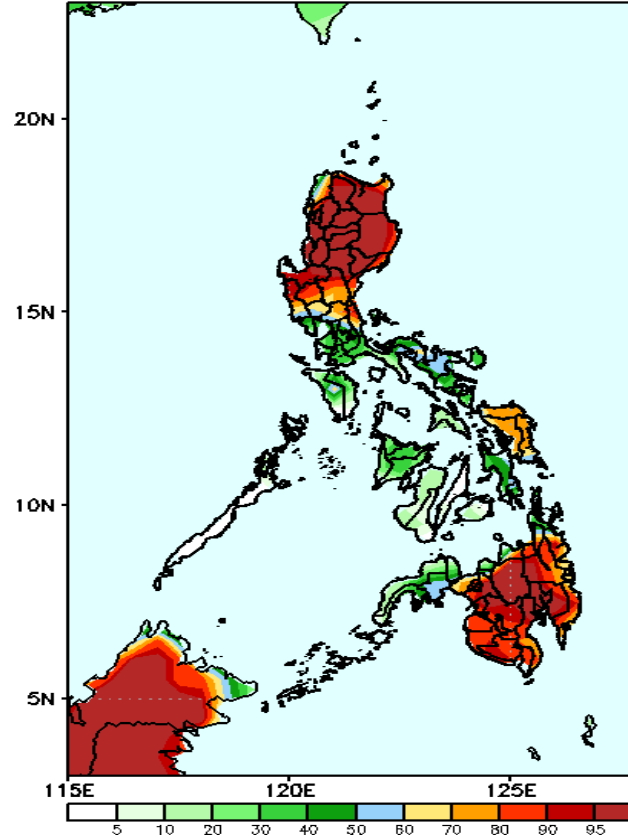
Week 1: Apr 14-20, 2023

GEFS Week-1 Precip Anomaly  
Valid: 20230414 - 20230420



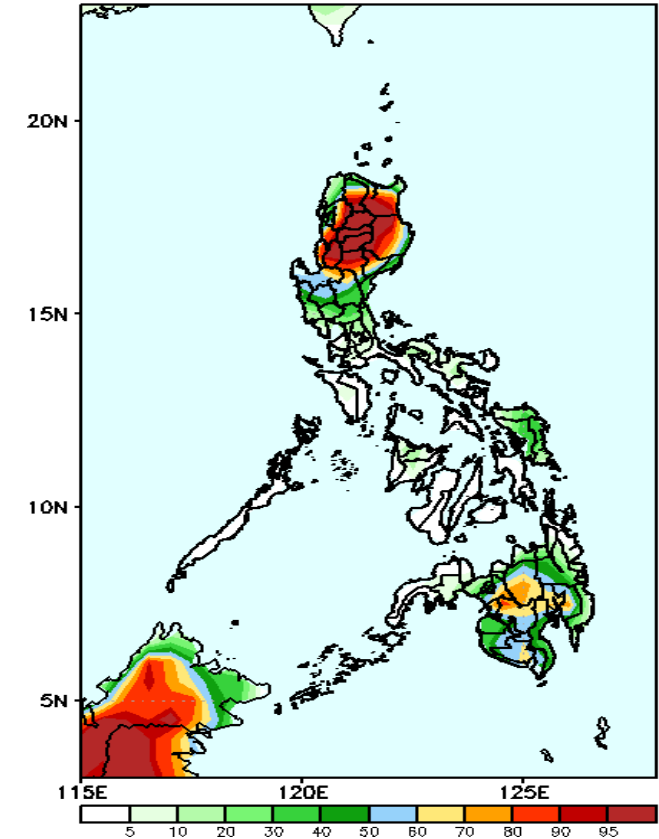
40–60mm increase of rainfall is expected in most parts of Luzon and southern Mindanao while 40–100mm rainfall deficit for the rest of the country during the forecast period.

GEFS Week-1 Exceedance Prob. > 25mm  
Valid: 20230414 - 20230420



High to a very high probability to exceed 25mm of rainfall in most parts of Mindanao, Samar Provinces, and Northern and Central Luzon while low to moderate chance over the rest of the country.

GEFS Week-1 Exceedance Prob. > 50mm  
Valid: 20230414 - 20230420



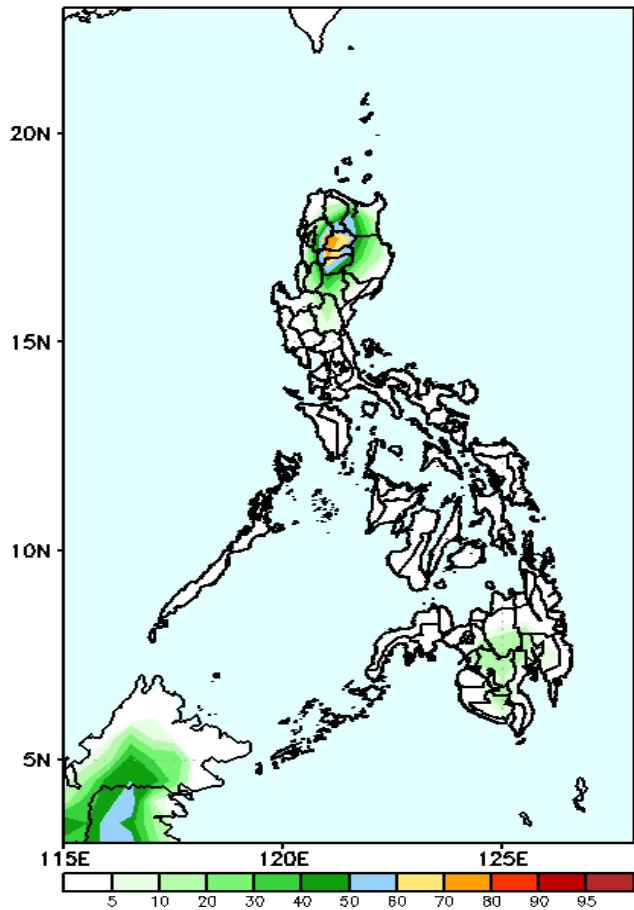
Moderate to High probability to exceed 50mm of rainfall over most parts of Northern Luzon, SOCCSKSARGEN, BARMM, Davao Region, and Bukidnon while low chance over the rest of the country.

# Exceedance Probability > 100/150/200 mm

Week 1: Apr 14-20, 2023

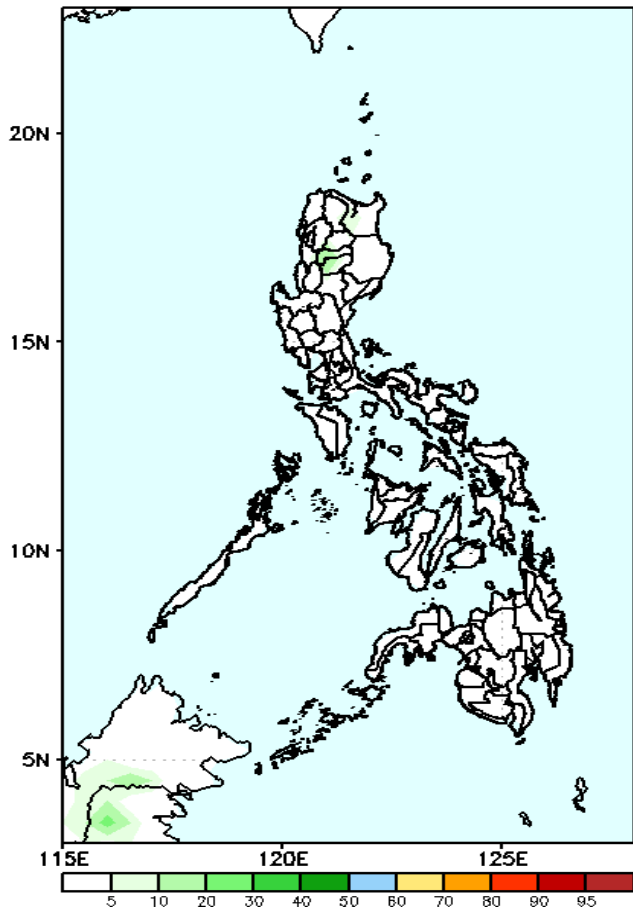
- Very high probability
- High Probability
- Moderate Probability
- Low Probability

GEFS Week-1 Exceedance Prob. > 100mm  
Valid: 20230414 - 20230420



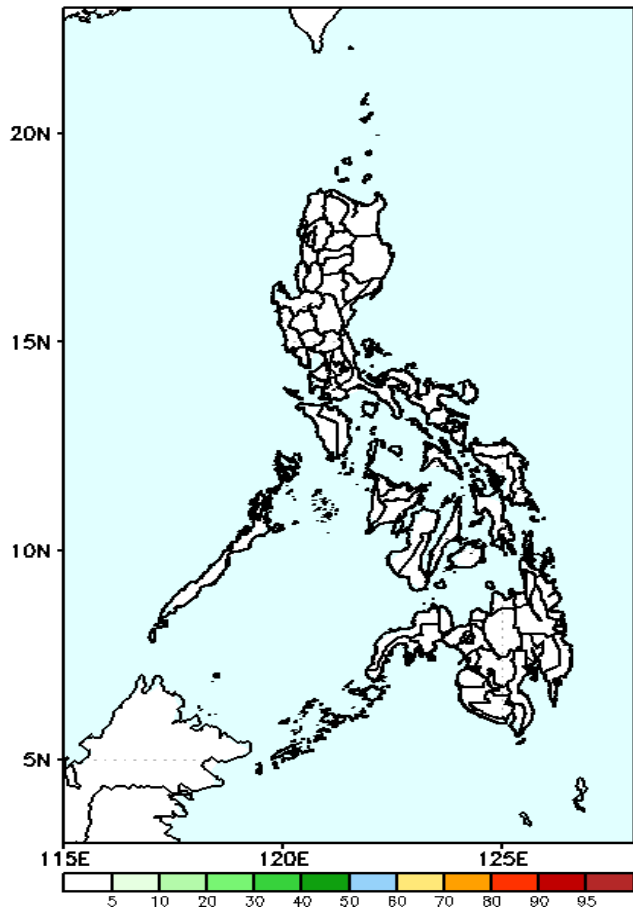
Moderate to a high probability to exceed 100mm of rainfall over portions of CAR while low likelihood over the rest of the country.

GEFS Week-1 Exceedance Prob. > 150mm  
Valid: 20230414 - 20230420



Low probability of rainfall to exceed 150mm in most parts of the country during the forecast period.

GEFS Week-1 Exceedance Prob. > 200mm  
Valid: 20230414 - 20230420

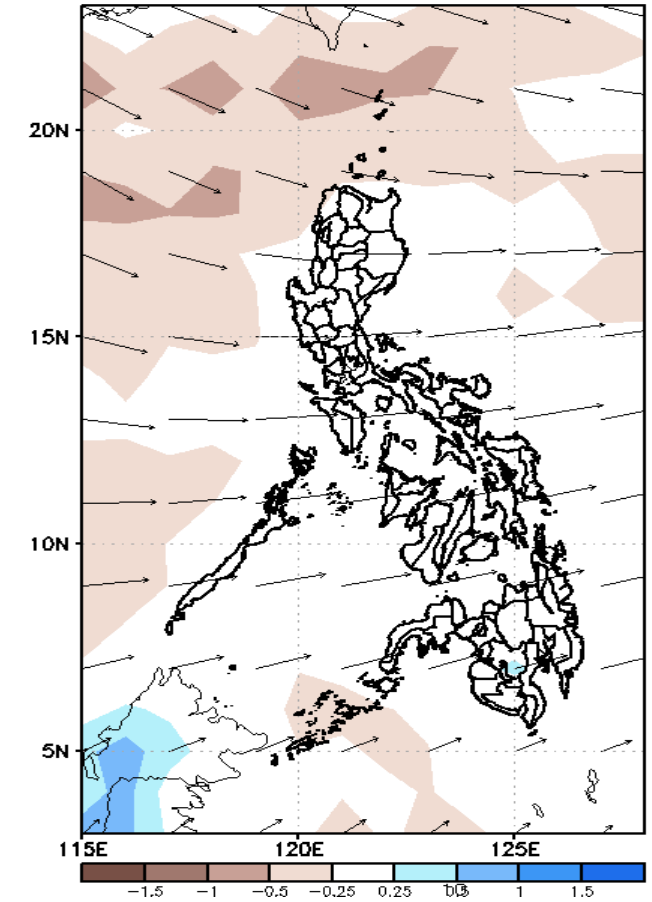
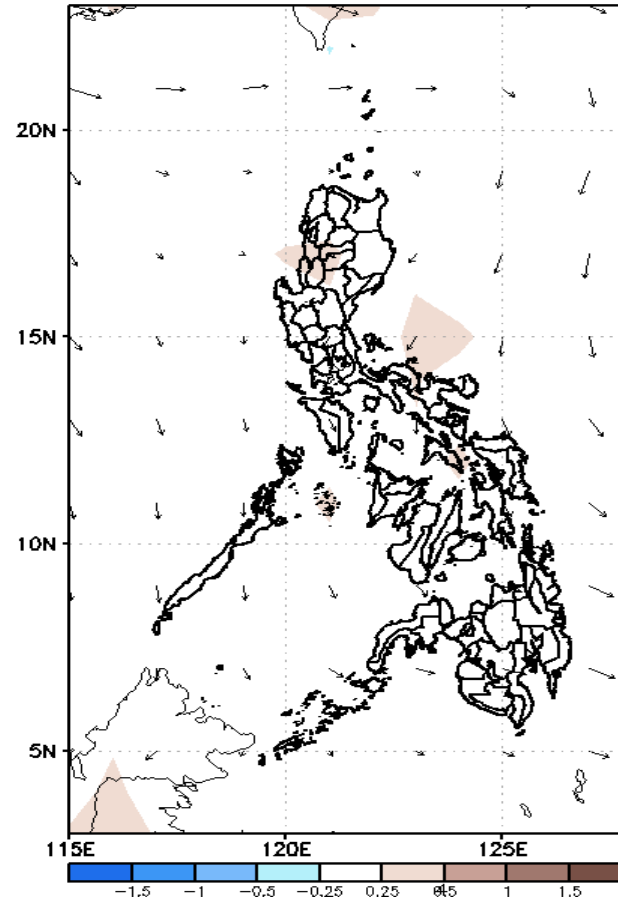
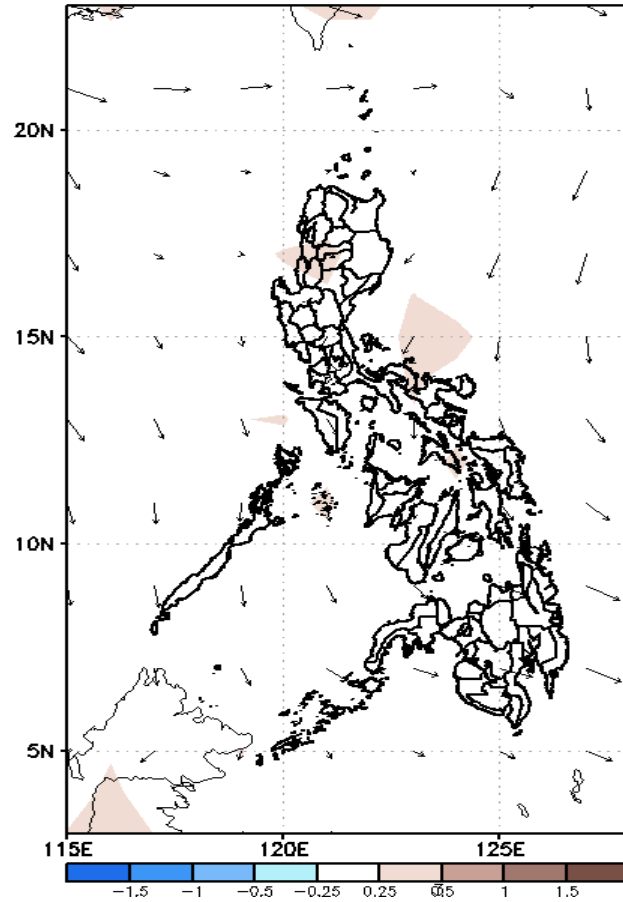


Low probability of rainfall to exceed 200mm in most parts of the country during the forecast period.

# GEFS Week-2 Forecasts: Wind Anomaly Forecast

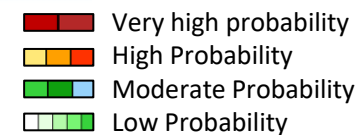
Week 2: Apr 21-27, 2023

GEFS Week-2 850-hPa Divergence and Wind Anom  
Valid: 20230421 - 20230427



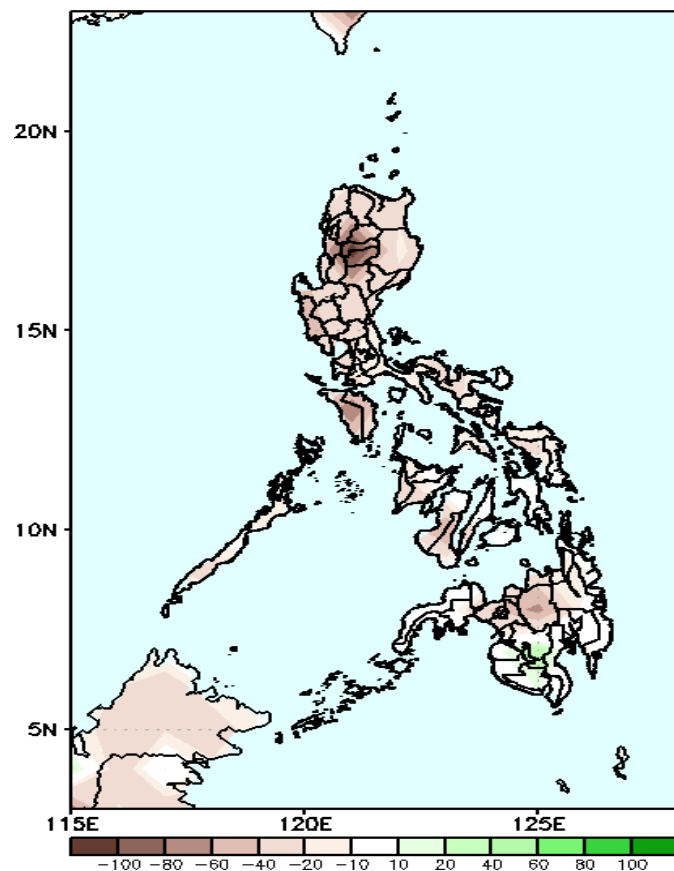
Easterlies is forecasted to affect most parts of the country; expect dry and hot weather during the forecast period.

# Precipitation Anomaly and Exceedance Probability > 25/50 mm

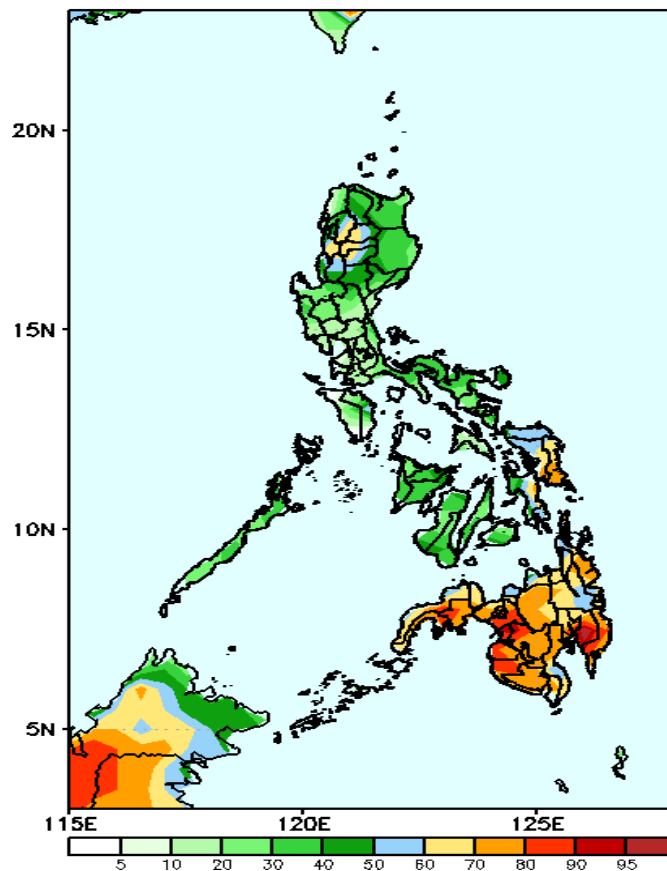


Week 2: Apr 21-27, 2023

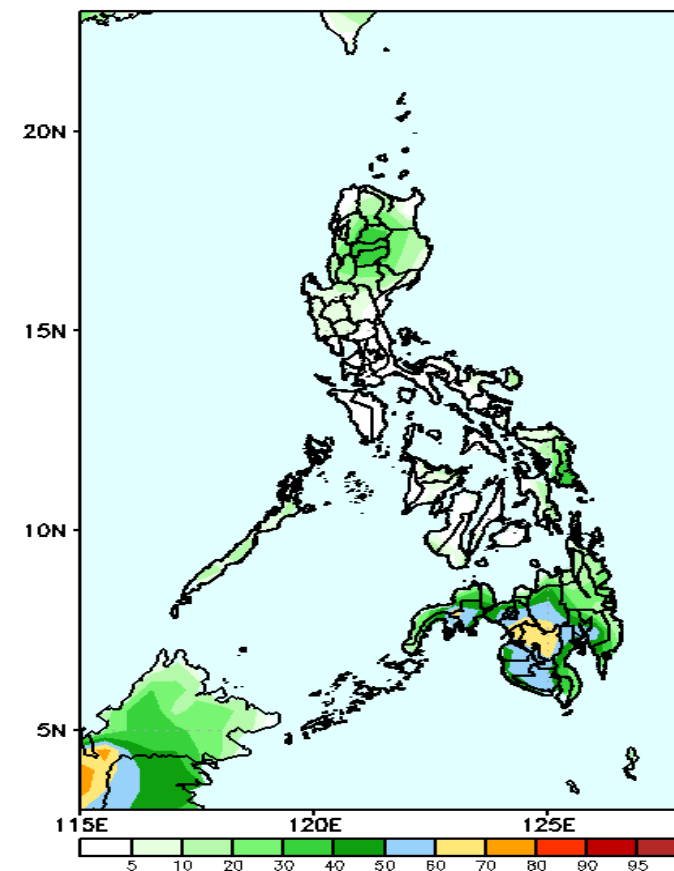
GEFS Week-2 Precip. Anomaly  
Valid: 20230421 - 20230427



GEFS Week-2 Exceedance Prob. > 25mm  
Valid: 20230421 - 20230427



GEFS Week-2 Exceedance Prob. > 50mm  
Valid: 20230421 - 20230427



Rainfall deficit of 40-100mm is expected in most parts of the country during the forecast period.

High to a very high probability to exceed 25mm of rainfall in Mindanao, most parts of Eastern Visayas, and portions of Ilocos Region and CAR while low to moderate chance over the rest of the country.

Moderate to High probability to exceed 50mm of rainfall over BARM, SOCCSKSARGEN, Northern Mindanao, and portions of CAR while low likelihood over the rest of the country.

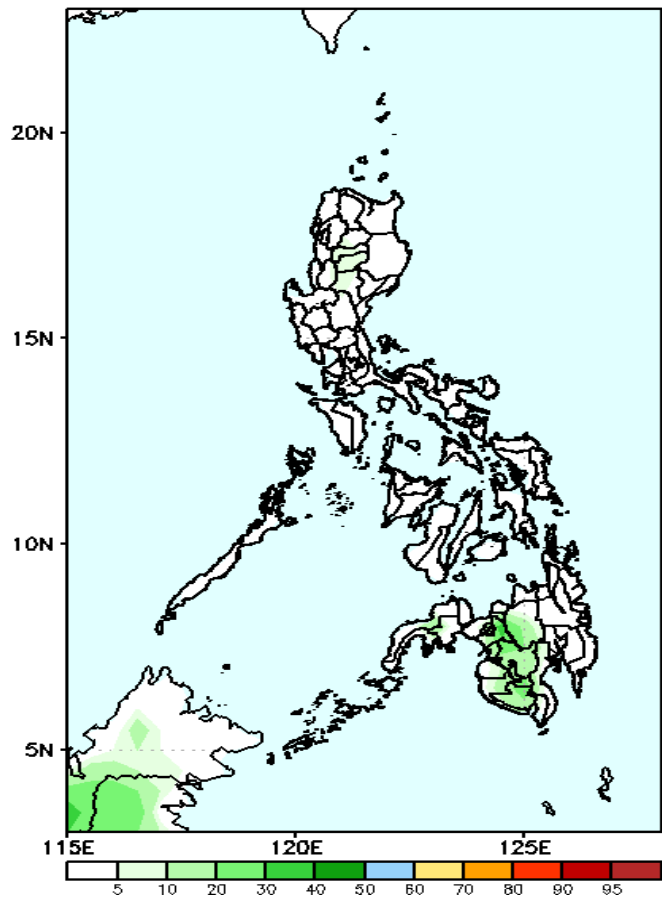




# Exceedance Probability > 100/150/200 mm

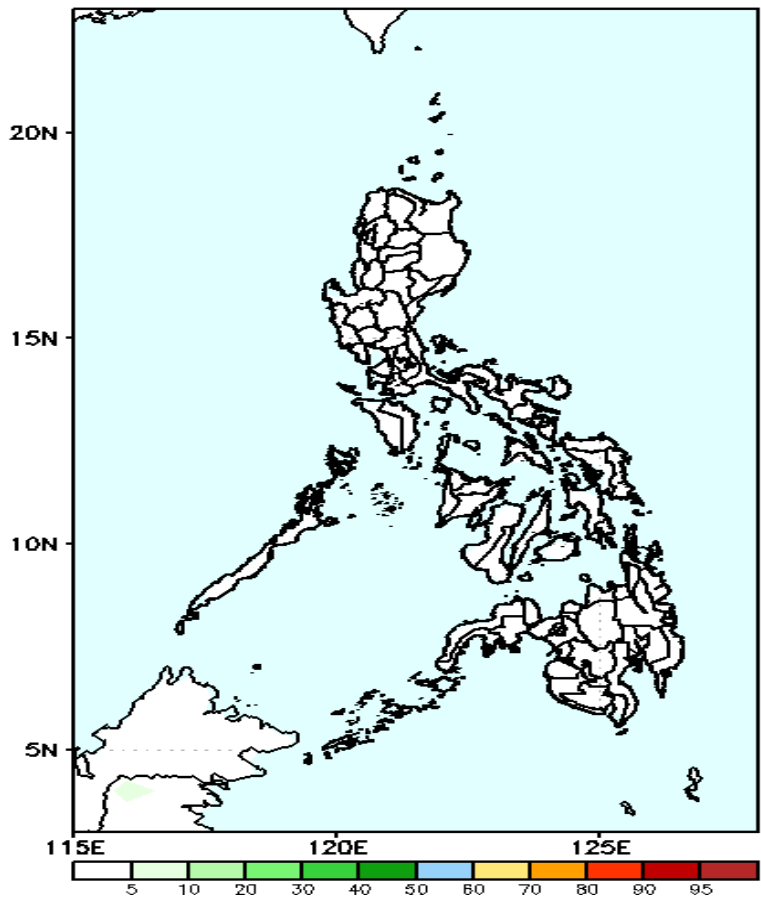
Week 2: Apr 21-27, 2023

GEFS Week-2 Exceedance Prob. > 100mm  
Valid: 20230421 – 20230427



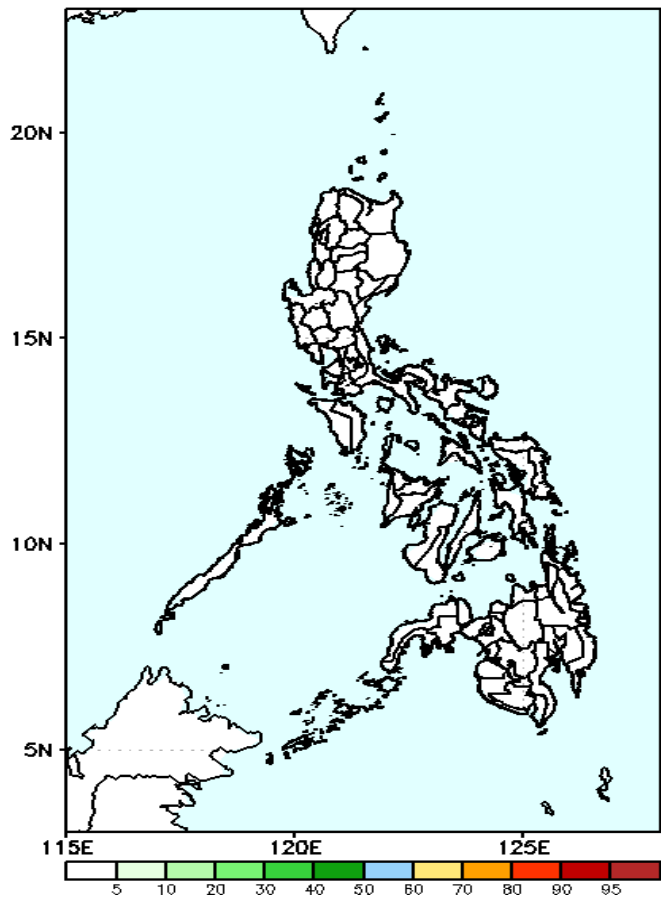
Low probability of rainfall to exceed 100mm in most parts of the country during the forecast period.

GEFS Week-2 Exceedance Prob. > 150mm  
Valid: 20230421 – 20230427



Low probability of rainfall to exceed 150mm in most parts of the country during the forecast period.

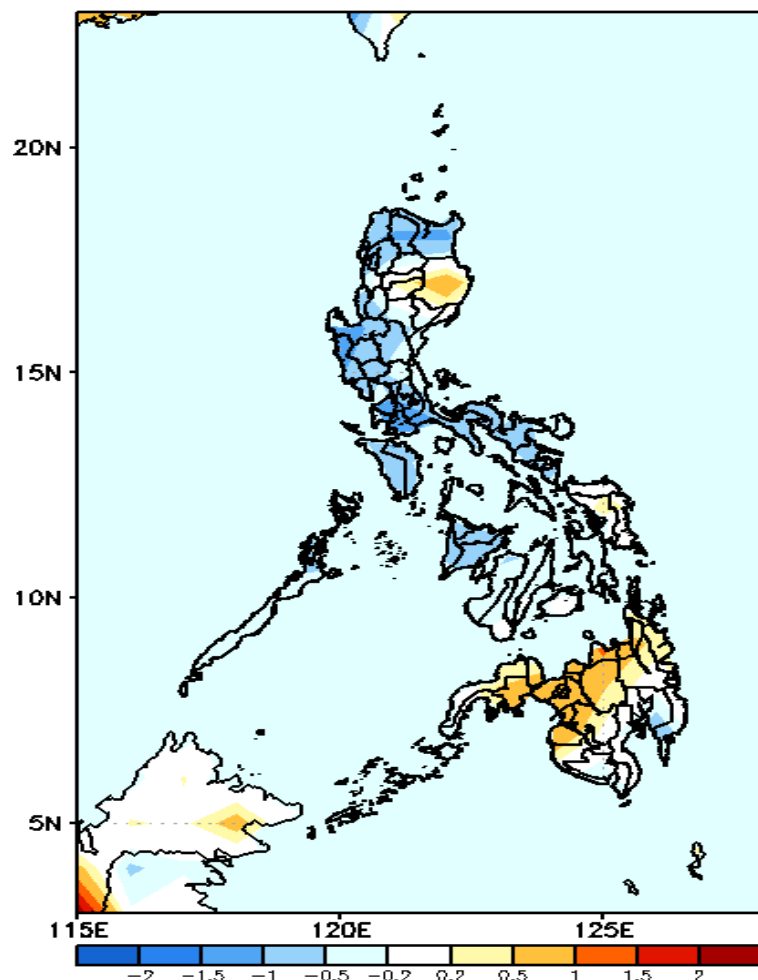
GEFS Week-2 Exceedance Prob. > 200mm  
Valid: 20230421 – 20230427



Low probability of rainfall to exceed 200mm in most parts of the country during the forecast period.

# GEFS Week-1 & 2 Forecasts: T2m Anomaly

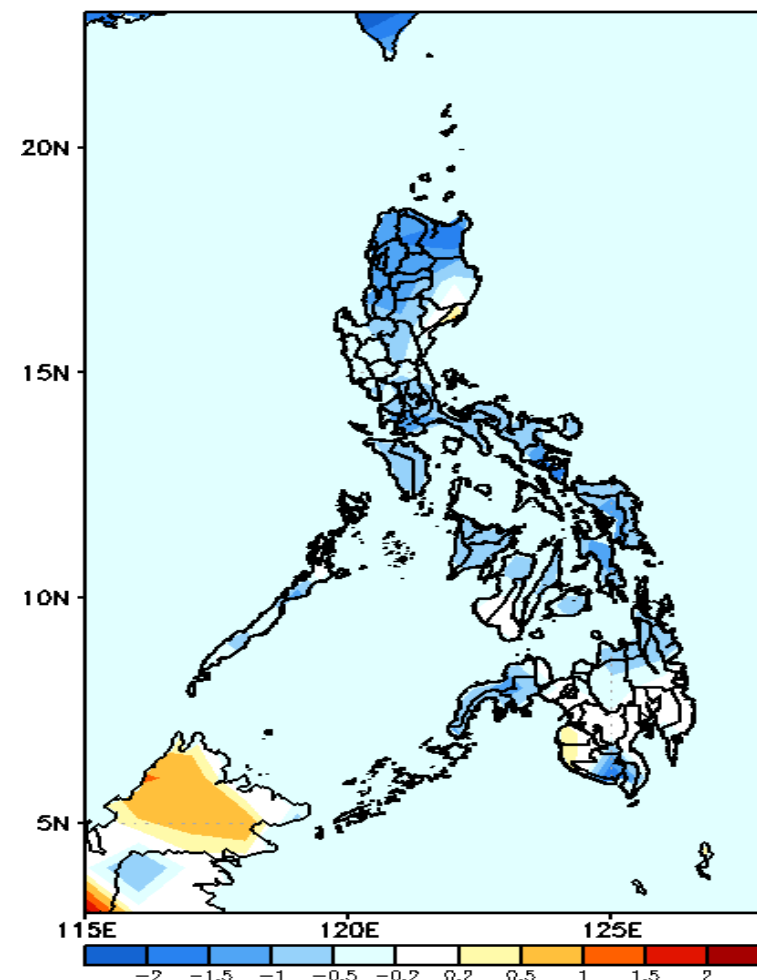
GEFS Week-1 T2m Anomaly  
Valid: 20230414 — 20230420



**2m Temperature Week 1: Apr 14-20, 2023**

Slightly cooler to cooler than average surface air temperature will likely experience in most parts of Luzon and Panay Island while average to warmer than average surface air temperature will likely have in Isabela, rest of Visayas and most parts of Mindanao during the forecast period.

GEFS Week-2 T2m Anomaly  
Valid: 20230421 — 20230427



**2m Temperature Week 2: Apr 21-27, 2023**

Average to cooler than average surface air temperature will likely experience in most parts of the country during the forecast period.