



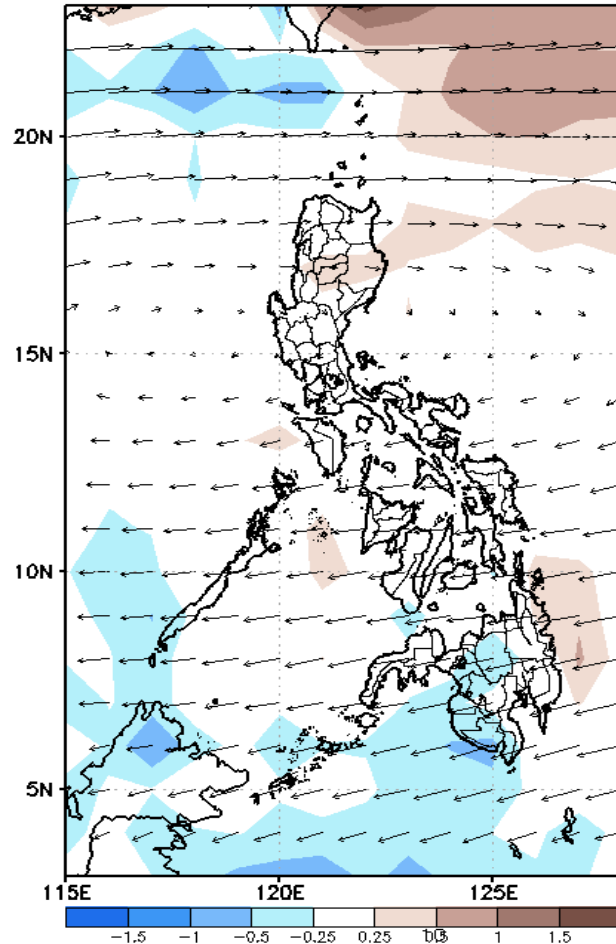
# Week 1 & Week 2 Forecast for the Philippines using GEFS Model



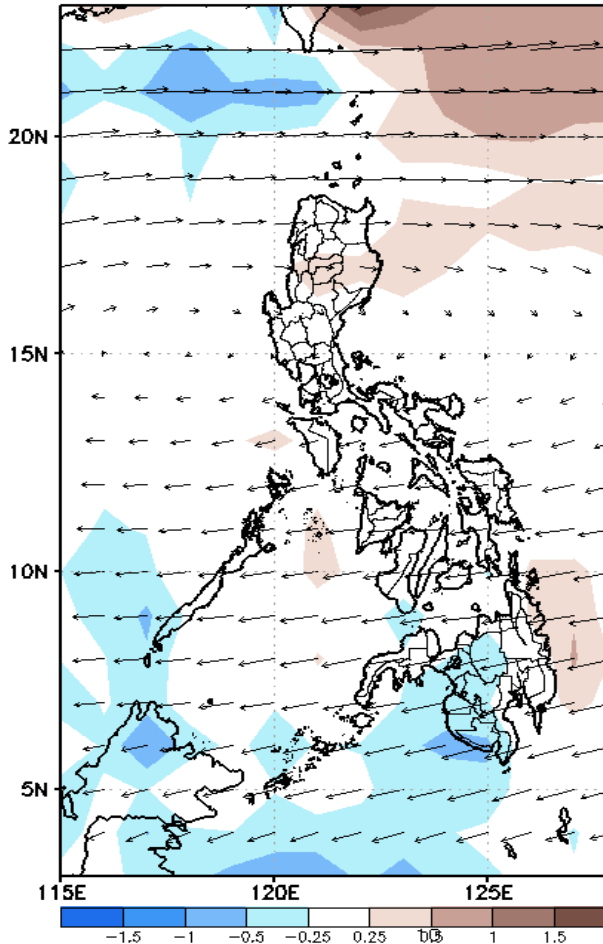
# GEFS Week-1 Forecasts: Divergence & Wind Anomaly

**Week 1: Feb 14-20, 2022**

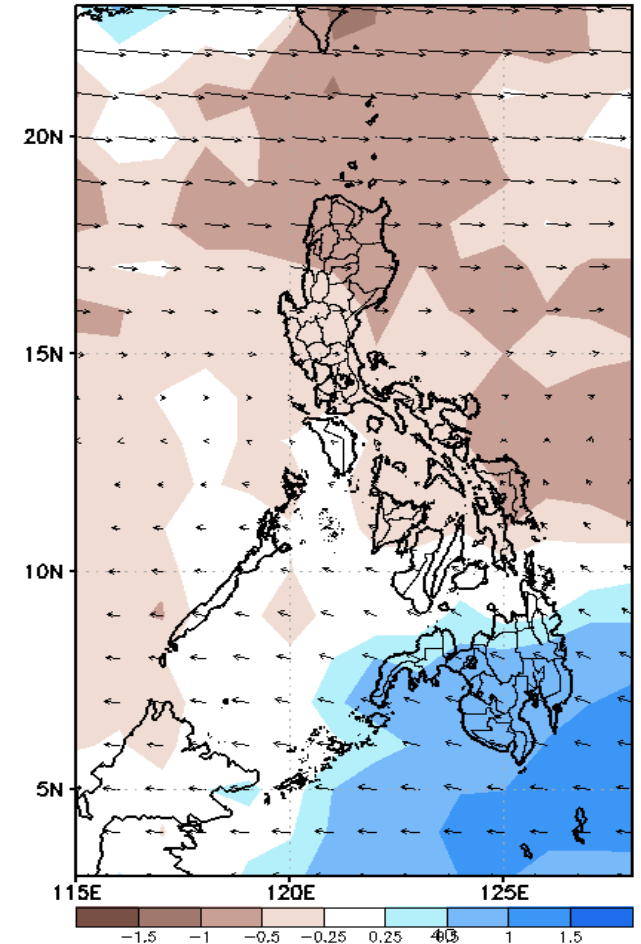
GEFS Week-1 850-hPa Divergence and Wind Anom  
Valid: 20220214 - 20220220



GEFS Week-1 700-hPa Divergence and Wind Anom  
Valid: 20220214 - 20220220



GEFS Week-1 200-hPa Divergence and Wind Anom  
Valid: 20220214 - 20220220

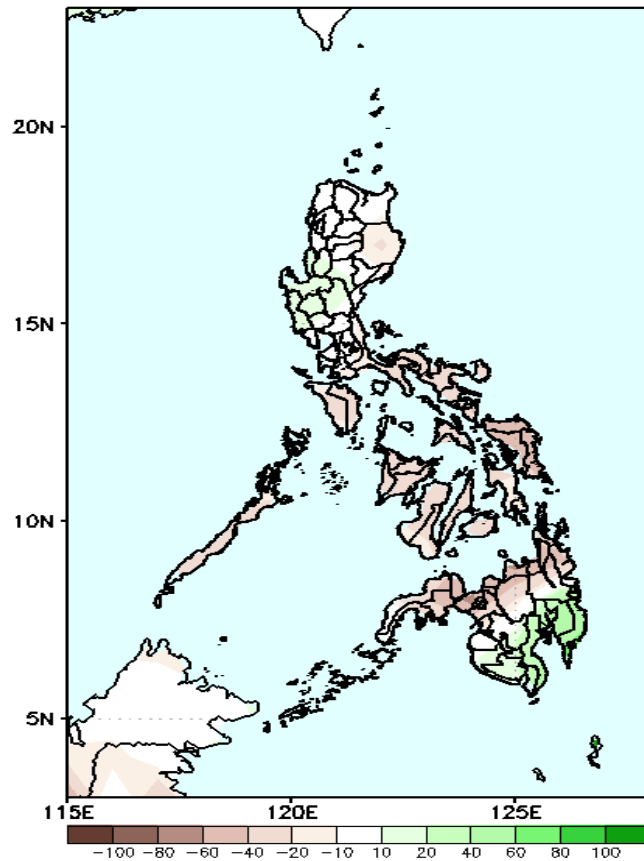


Upper and low level Divergence suggest a likelihood of light to moderate precipitation in most parts of Mindanao. Northeast Monsoon affecting Northern Luzon while Easterlies affecting the rest of the country during the forecast period.

# Precipitation Anomaly and Exceedance Probability > 25/50 mm

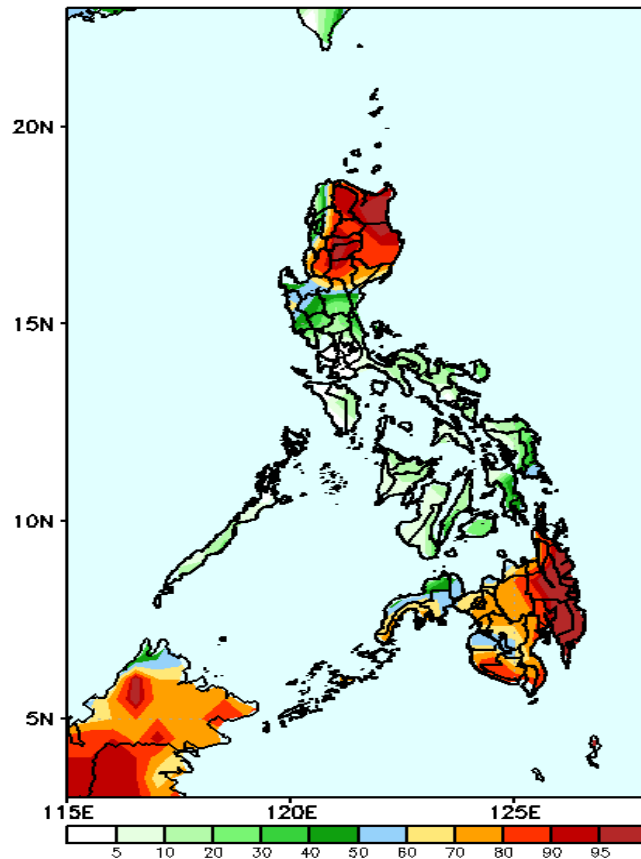
Week 1: Feb 14-20, 2022

GEFS Week-1 Precip Anomaly  
Valid: 20220214 - 20220220



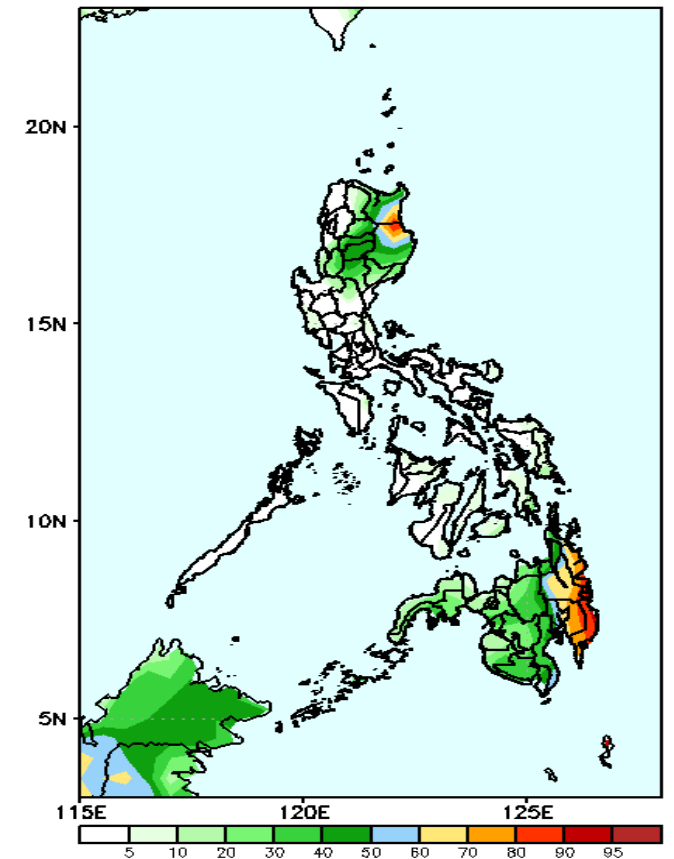
Rainfall deficit of 30-70mm in most parts of Southern Luzon, Bicol Region, Visayas and northern half of Mindanao while 20-50mm increase of rainfall for the rest of Mindanao during the forecast period.

GEFS Week-1 Exceedance Prob. > 25mm  
Valid: 20220214 - 20220220



High probability of rainfall to exceed 25mm in most parts of Cordillera Region, Cagayan Valley and Mindanao while less likely for the rest of the country during the forecast period.

GEFS Week-1 Exceedance Prob. > 50mm  
Valid: 20220214 - 20220220



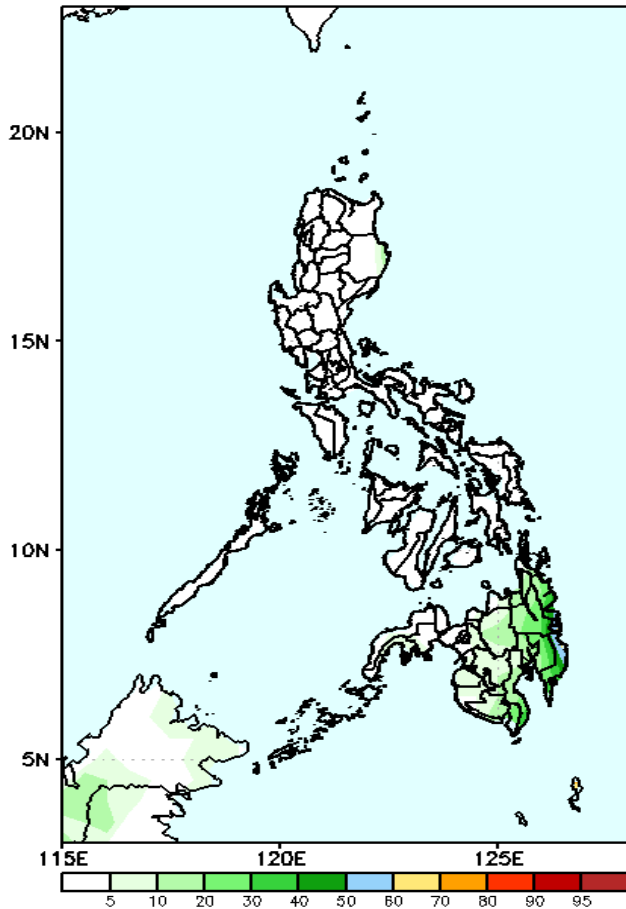
50 – 95% probability of rainfall to exceed 50mm in Cagayan, Isabela and CARAGA & Davao Region while less likely for the rest of the country during the forecast period.



# Exceedance Probability > 100/150/200 mm

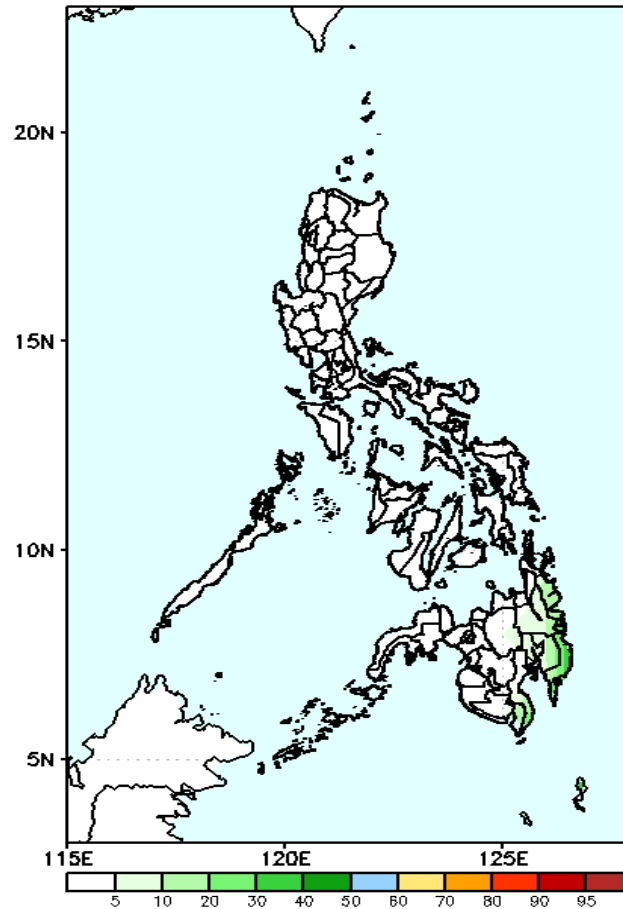
**Week 1: Feb 14-20, 2022**

GEFS Week-1 Exceedance Prob. > 100mm  
Valid: 20220214 - 20220220



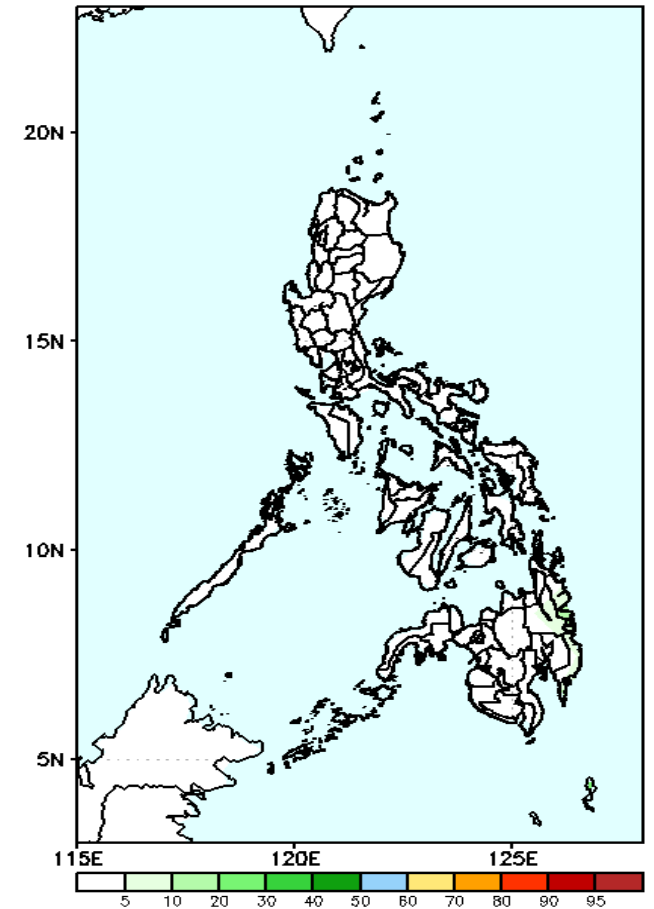
Low probability of rainfall to exceed 100mm in most parts of the country during the forecast period.

GEFS Week-1 Exceedance Prob. > 150mm  
Valid: 20220214 - 20220220



Low probability of rainfall to exceed 150mm in most parts of the country during the forecast period.

GEFS Week-1 Exceedance Prob. > 200mm  
Valid: 20220214 - 20220220

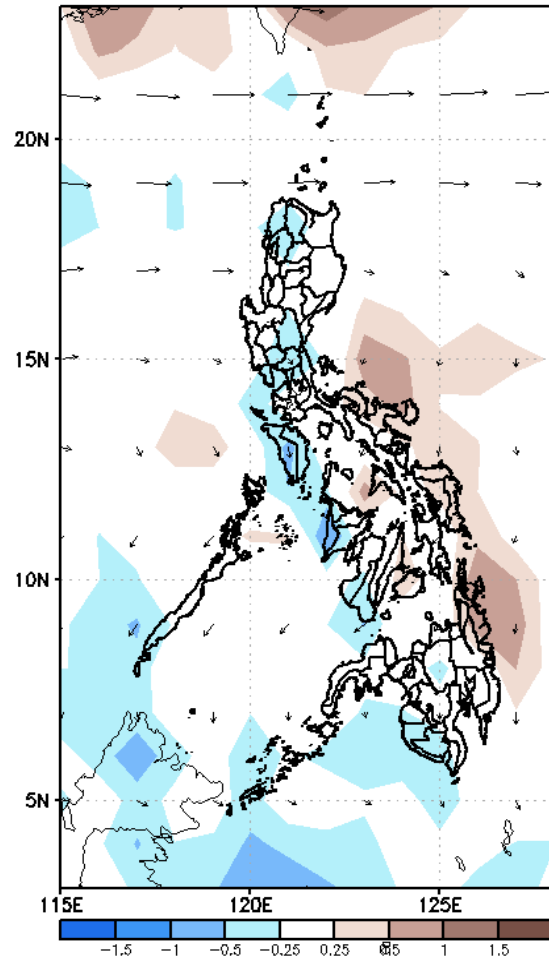


Low probability of rainfall to exceed 200mm in most parts of the country during the forecast period.

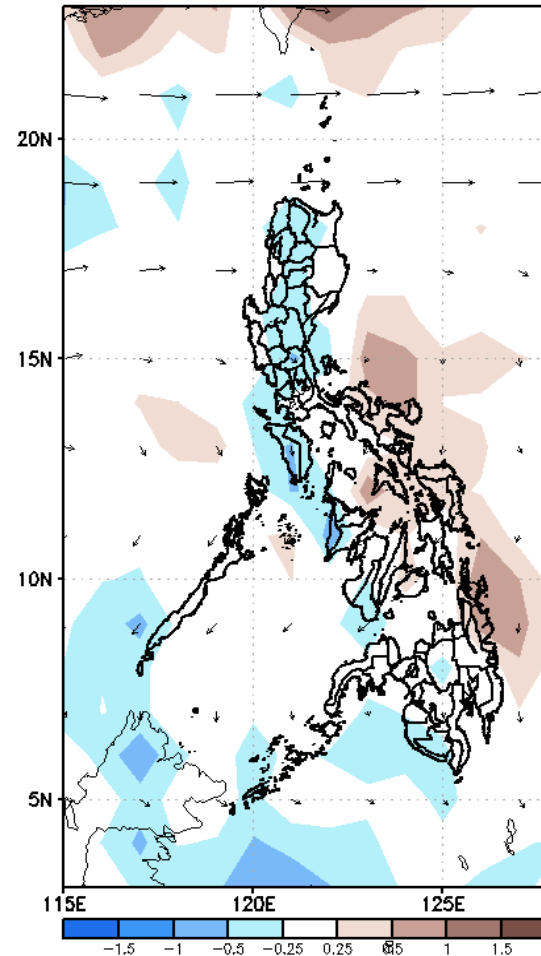
# GEFS Week-2 Forecasts: Divergence & Wind Anomaly

**Week 2: Feb 21-27, 2022**

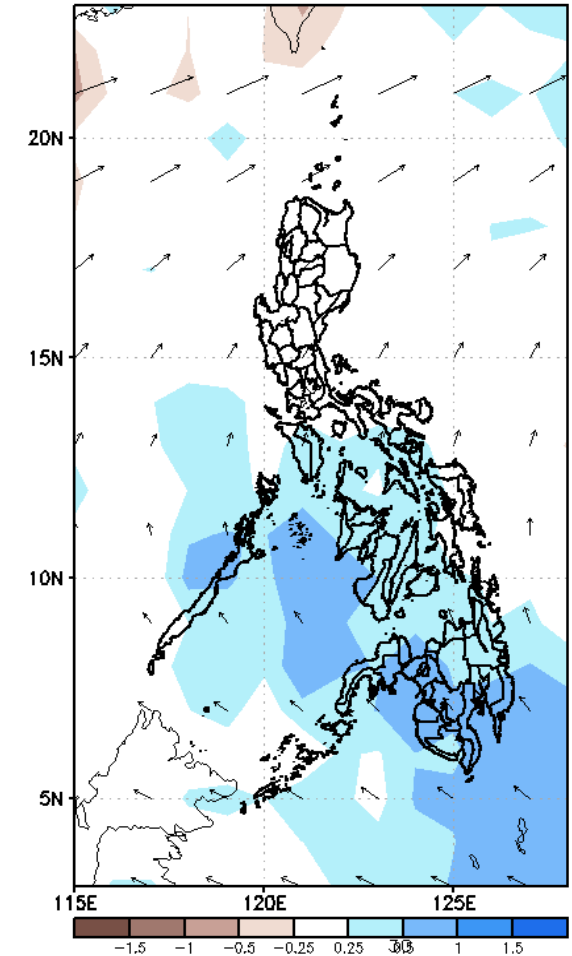
GEFS Week-2 850-hPa Divergence and Wind Anomaly  
Valid: 20220221 - 20220227



GEFS Week-2 700-hPa Divergence and Wind Anomaly  
Valid: 20220221 - 20220227



GEFS week-2 200-hPa Divergence and Wind Anomaly  
Valid: 20220221 - 20220227

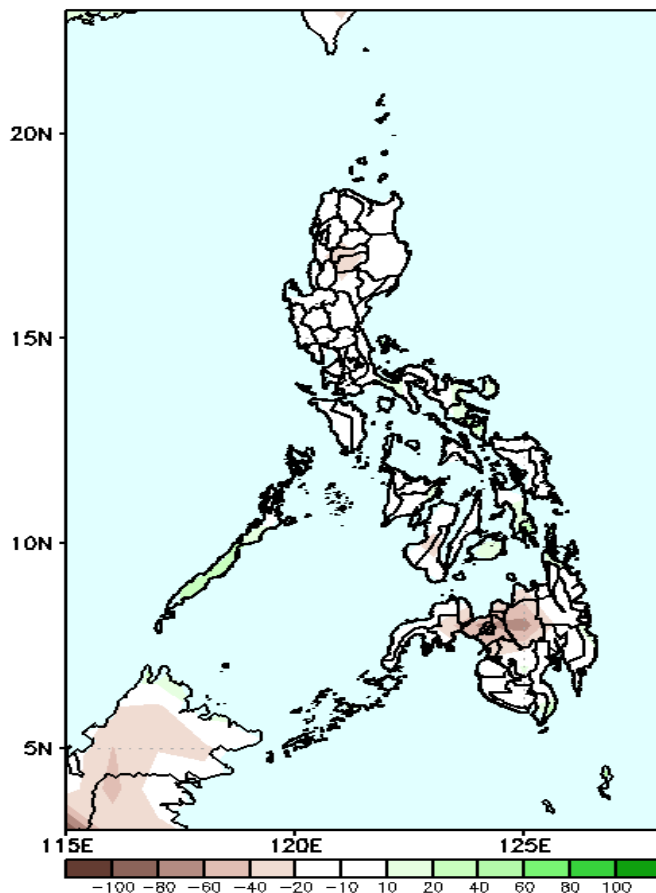


Upper and low level Divergence suggest a likelihood of light to moderate precipitation in Sorsogon, MIMAROPA, Palawan and most parts of Visayas and Mindanao. Easterlies affecting the rest of the country during the forecast period.

# Precipitation Anomaly and Exceedance Probability > 25/50 mm

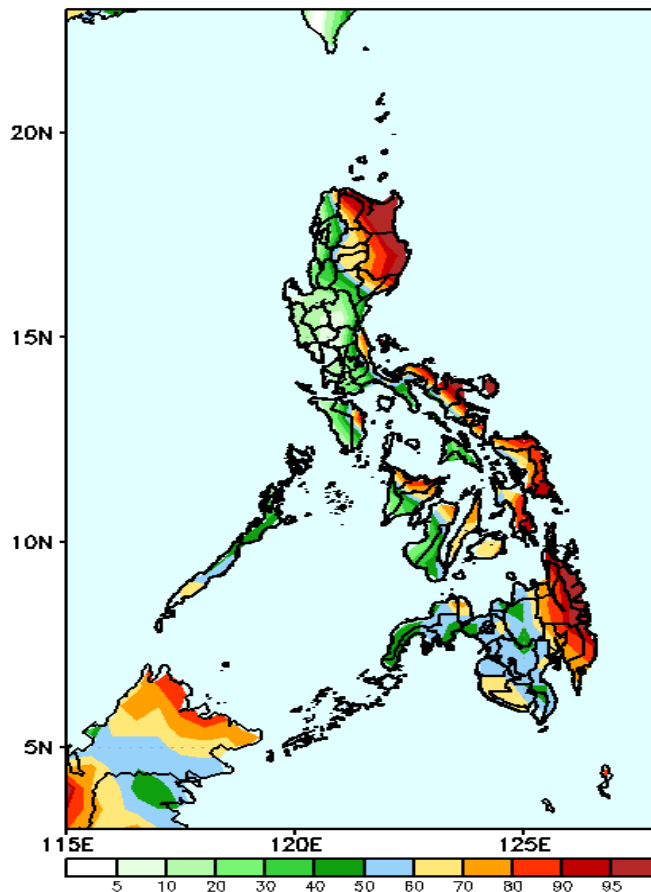
**Week 2: Feb 21-27, 2022**

GEFS Week-2 Precip Anomaly  
Valid: 20220221 - 20220227



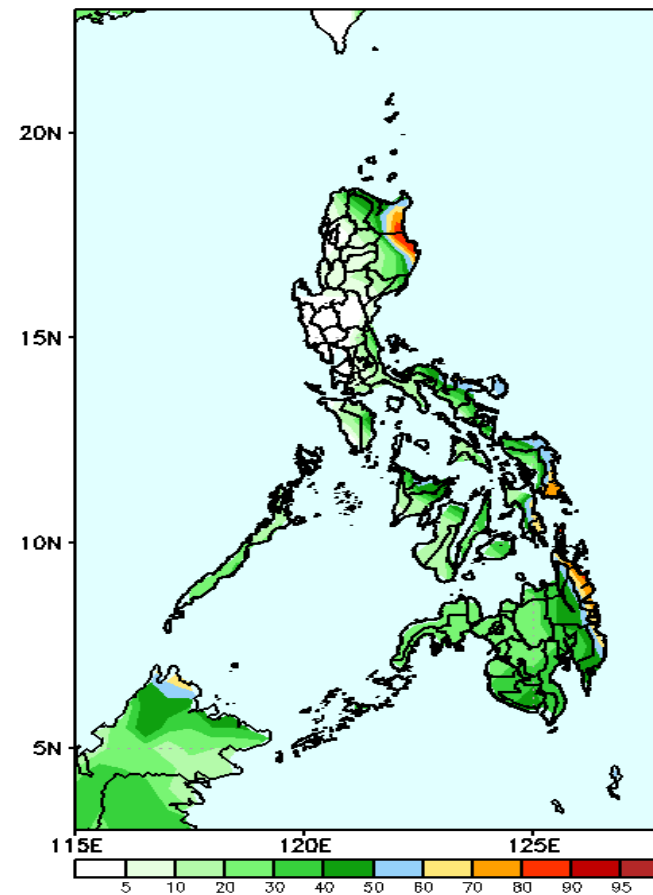
Rainfall deficit of up to 60mm in Bukidnon and Lanao provinces during the forecast period.

GEFS Week-2 Exceedance Prob. > 25mm  
Valid: 20220221 - 20220227



High probability of rainfall to exceed 25mm in the eastern sections of the country, Apayao, Cebu, Bohol, Aklan & Capiz, while less likely for the rest of the country during the forecast period.

GEFS Week-2 Exceedance Prob. > 50mm  
Valid: 20220221 - 20220227



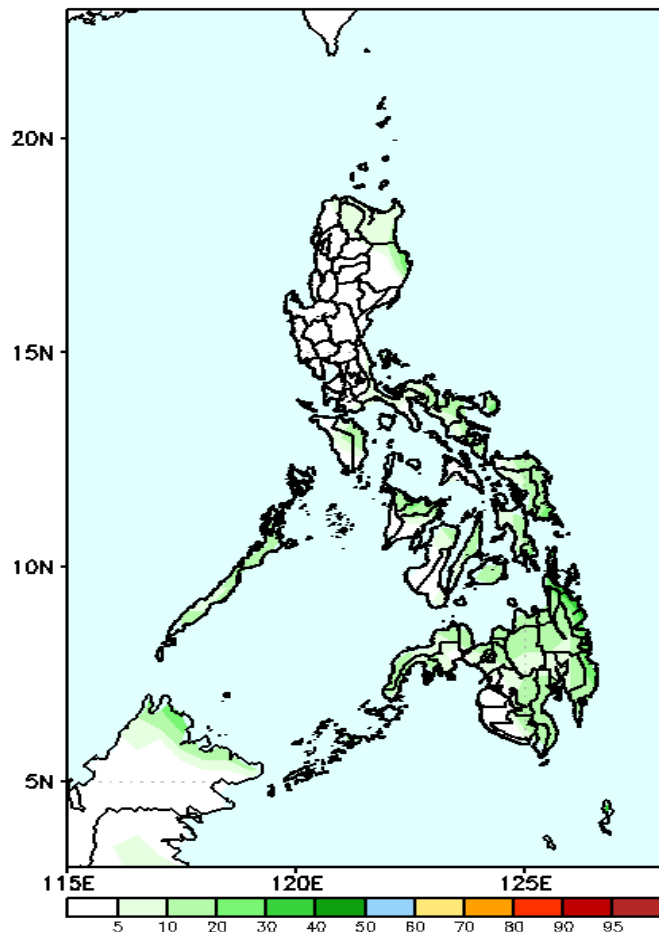
Less probability of rainfall to exceed 50mm in most parts of the country except in Cagayan, Isabela and Surigao del Sur where there is 50-90% chance during the forecast period.



# Exceedance Probability > 100/150/200 mm

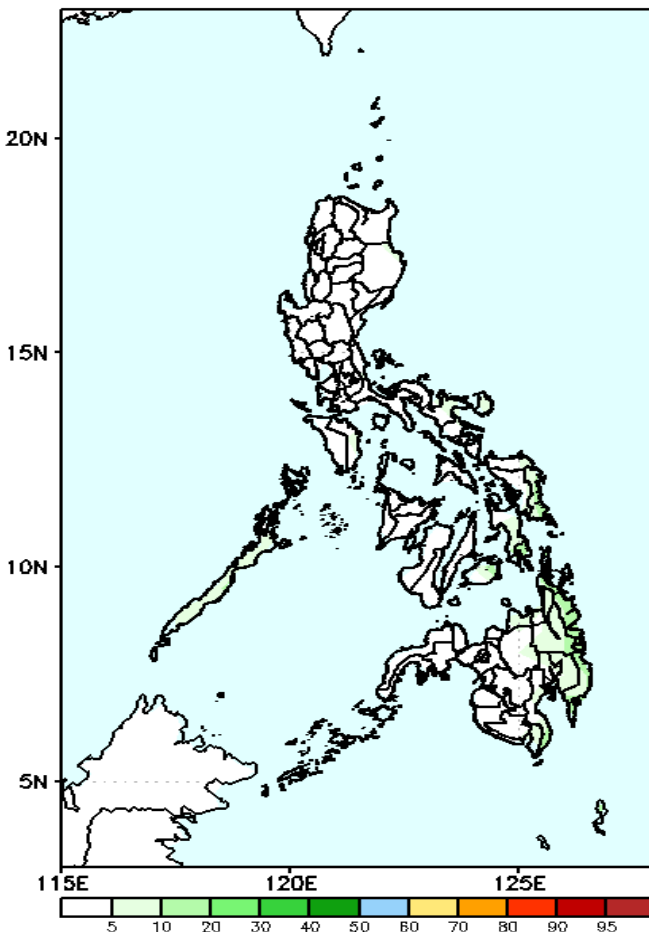
**Week 2: Feb 21-27, 2022**

GEFS Week-2 Exceedance Prob. > 100mm  
Valid: 20220221 - 20220227



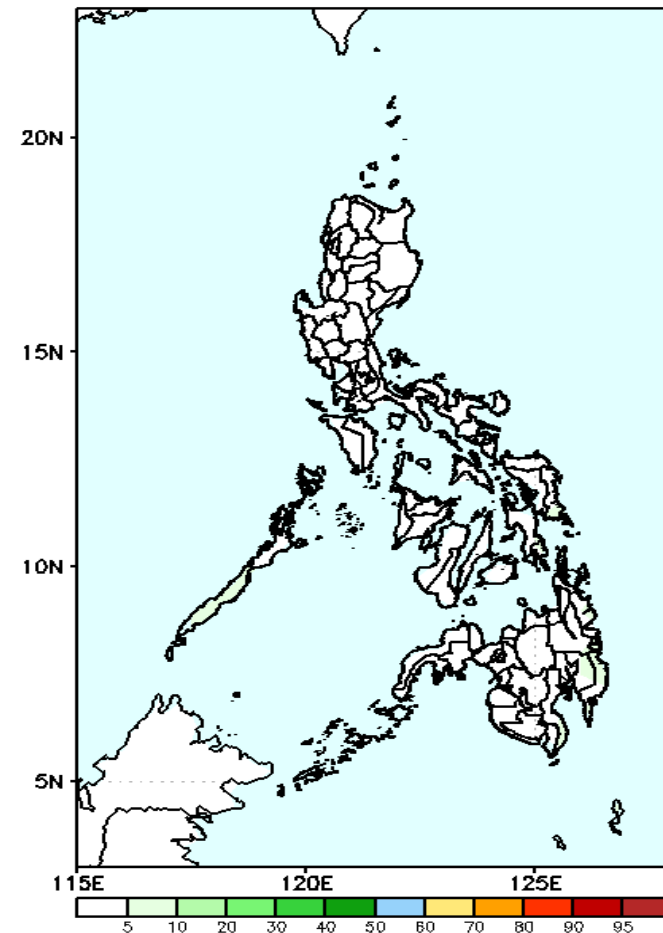
Low probability of rainfall to exceed 100mm in most parts of the country during the forecast period.

GEFS Week-2 Exceedance Prob. > 150mm  
Valid: 20220221 - 20220227



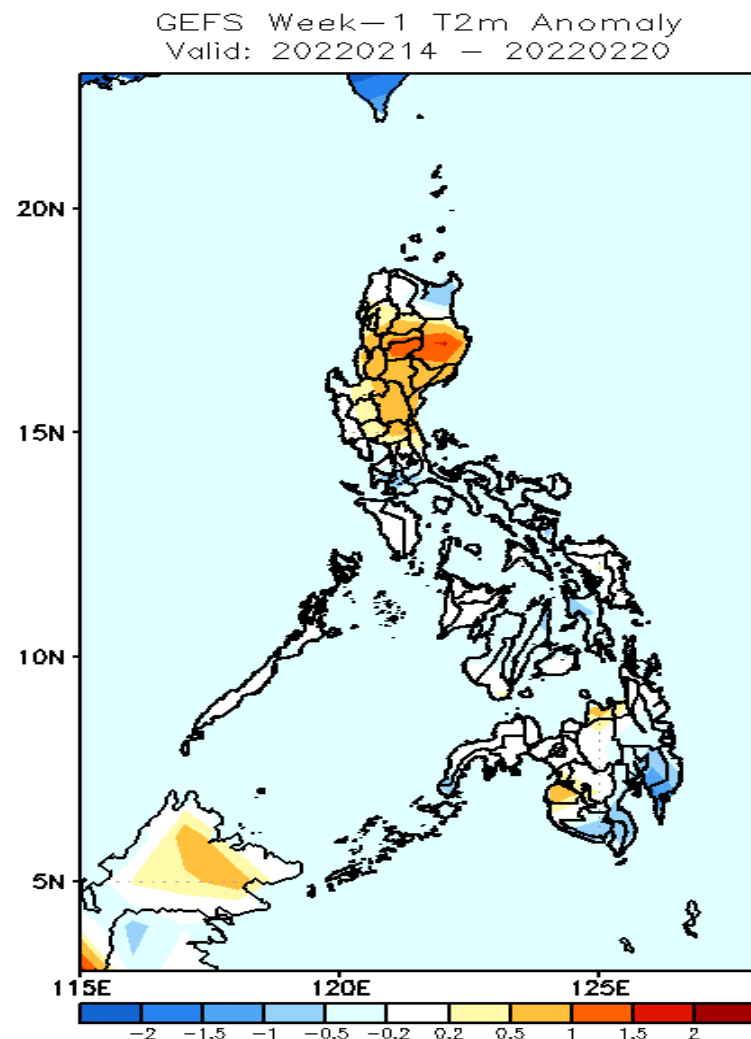
Low probability of rainfall to exceed 150mm in most parts of the country during the forecast period.

GEFS Week-2 Exceedance Prob. > 200mm  
Valid: 20220221 - 20220227



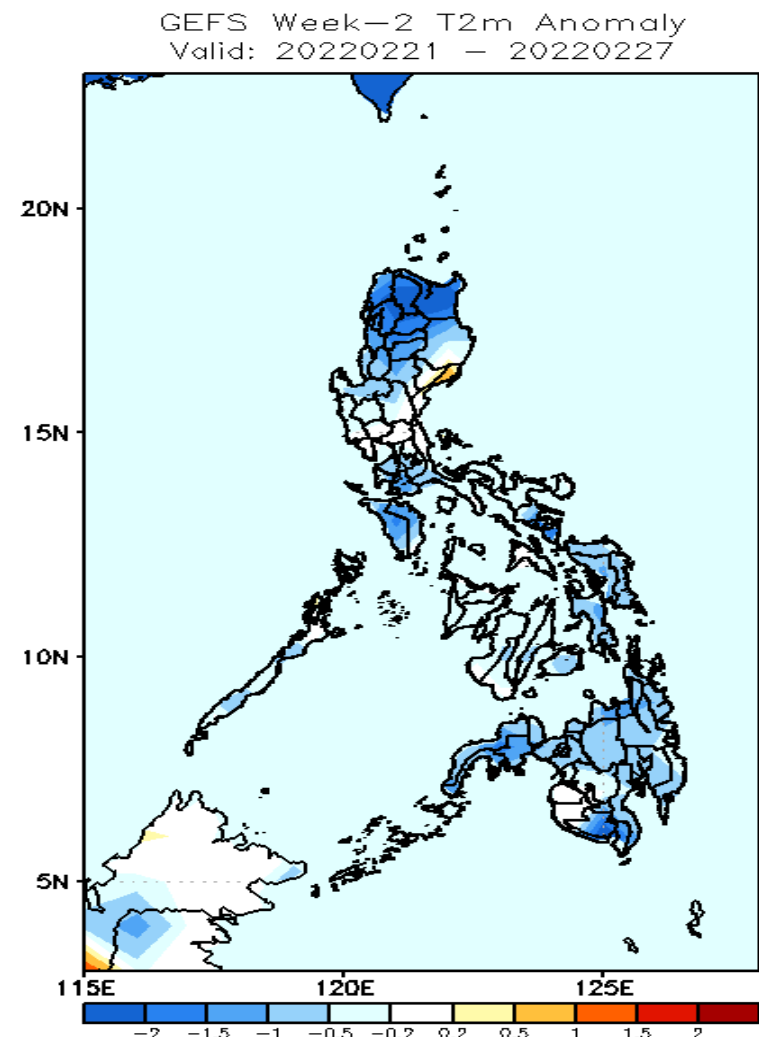
Low probability of rainfall to exceed 200mm in most parts of the country during the forecast period.

# GEFS Week-1 & 2 Forecasts: T2m Anomaly



## 2m Temperature Week 1: Feb 14-20, 2022

Warmer than average surface air temperature will likely experience in most parts of Luzon while average to slightly cooler for the rest of the country during the forecast period.



## 2m Temperature Week 2: Feb 21-27, 2022

Cooler than average surface air temperature will likely experience in most parts of the country during the forecast period.