



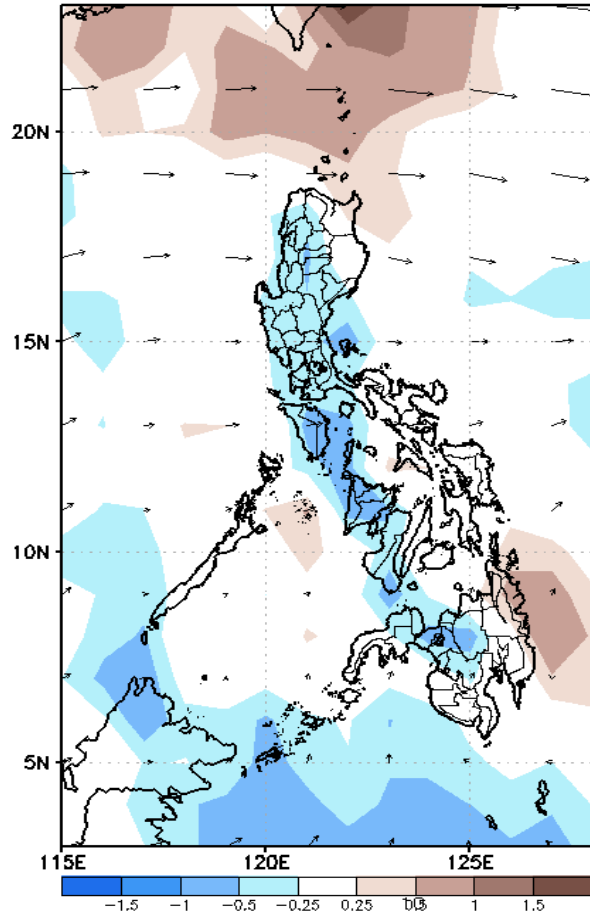
Week 1 & Week 2 Forecast for the Philippines using GEFS Model



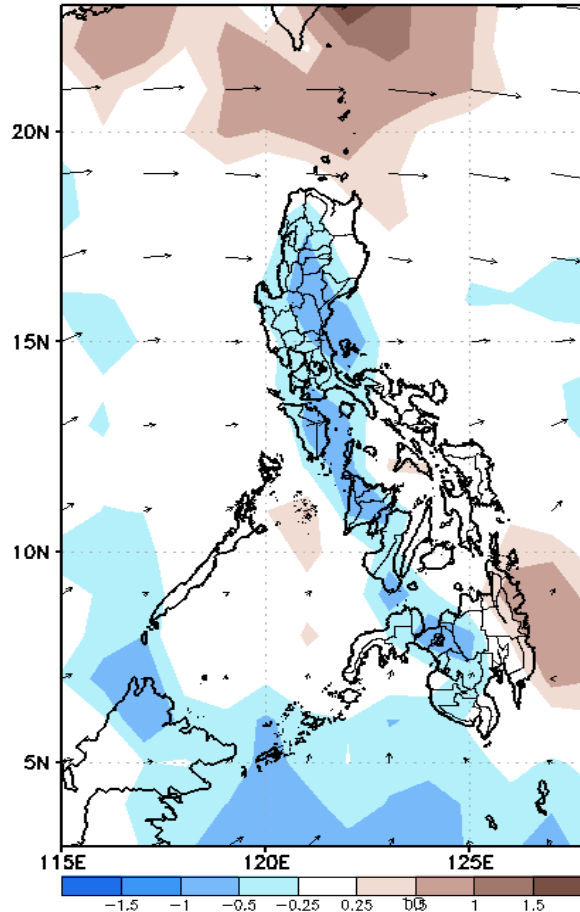
GEFS Week-1 Forecasts: Divergence & Wind Anomaly

Week 1: Jan 14-20, 2022

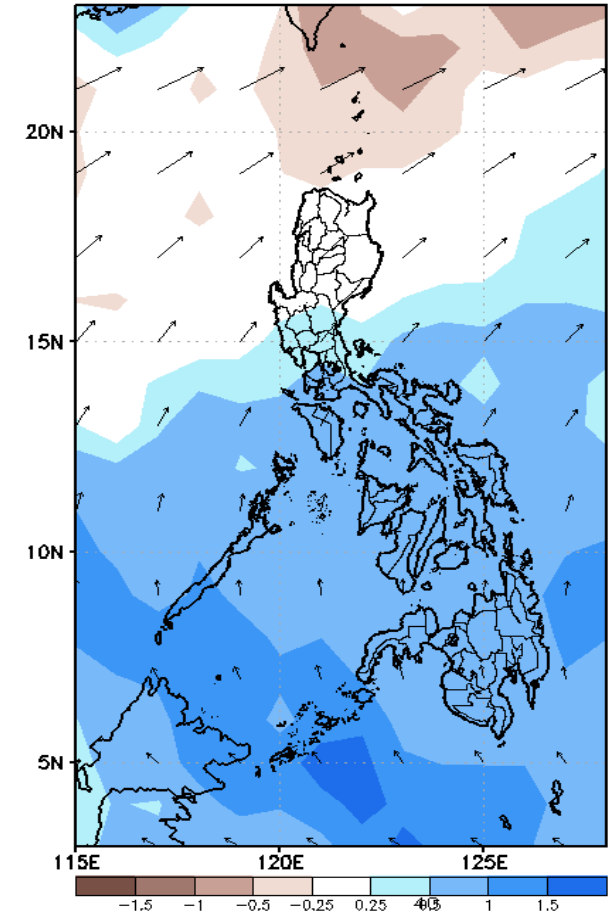
GEFS Week-1 850-hPa Divergence and Wind Anom
Valid: 20220114 - 20220120



GEFS Week-1 700-hPa Divergence and Wind Anom
Valid: 20220114 - 20220120



GEFS Week-1 200-hPa Divergence and Wind Anom
Valid: 20220114 - 20220120

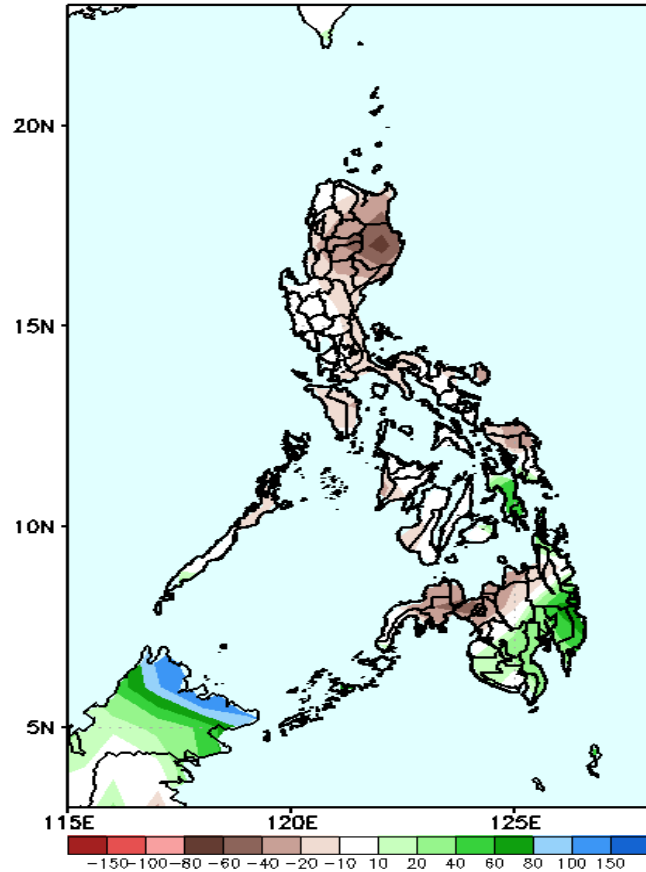


Upper and low level Divergence suggest a likelihood of light to moderate precipitation in most parts of Central and Southern Luzon, Visayas and Mindanao. Northeast Monsoon affecting eastern sections of Luzon while Easterlies affecting the rest of the country during the forecast period.

Precipitation Anomaly and Exceedance Probability > 25/50 mm

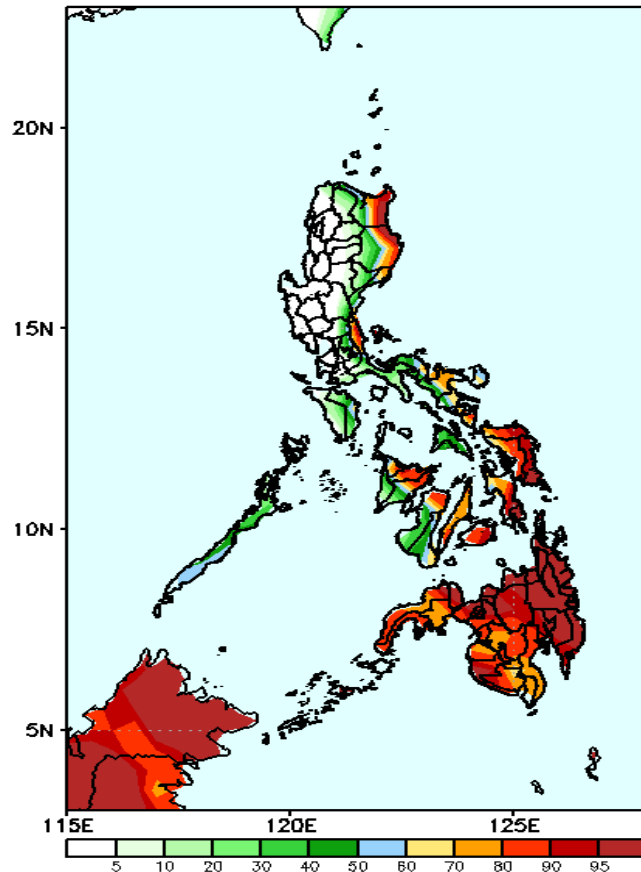
Week 1: Jan 14-20, 2022

GEFS Week-1 Precip Anomaly
Valid: 20220114 - 20220120



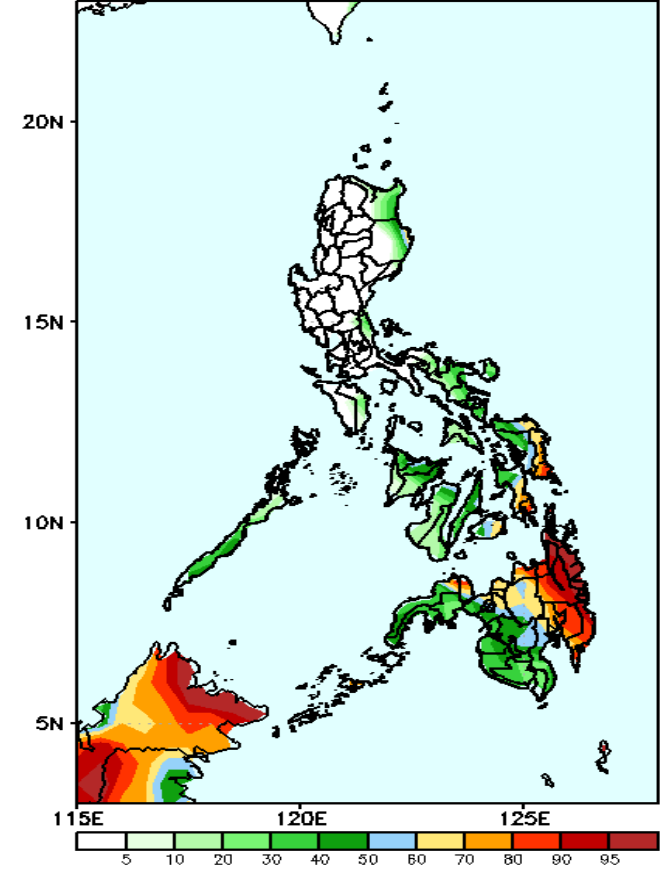
Rainfall deficit of 40-80mm is expected in most parts of the country except in the provinces of Leyte & Southern Mindanao where above normal rainfall is more likely during the forecast period.

GEFS Week-1 Exceedance Prob. > 25mm
Valid: 20220114 - 20220120



High probability of rainfall to exceed 25mm in eastern parts of Cagayan & Isabela, Rizal, Camarines Sur, Sorsogon, Eastern & Central Visayas, some parts of Western Visayas and most parts of Mindanao while less likely for the rest of the county during the forecast period.

GEFS Week-1 Exceedance Prob. > 50mm
Valid: 20220114 - 20220120

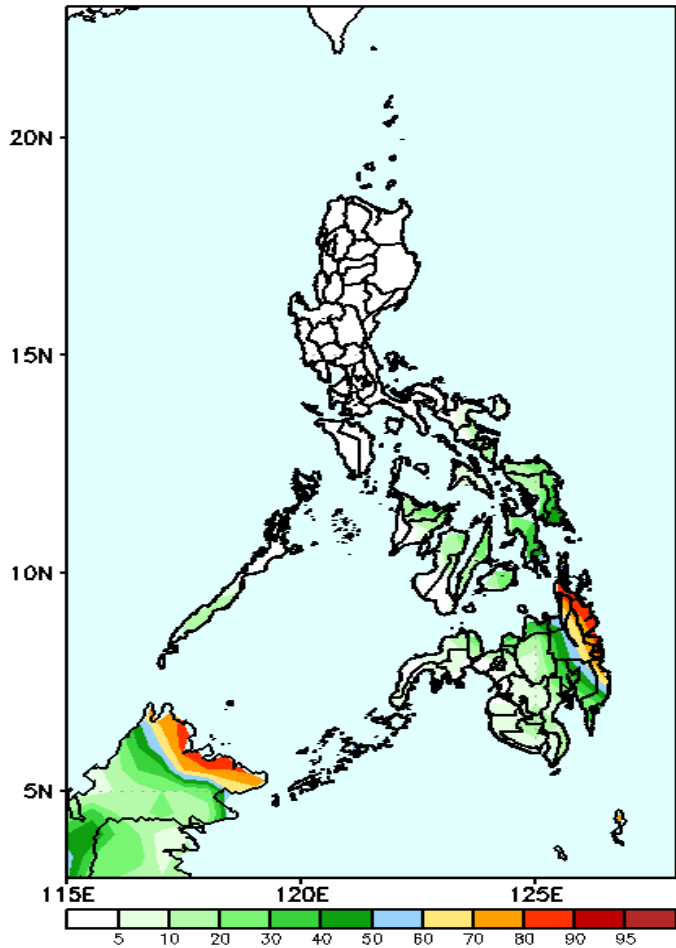


High probability of rainfall to exceed 50mm in Eastern Samar, Southern Leyte, Misamis Oriental & Occidental and most parts of CARAGA & Davao Region while less likely for the rest of the county during the forecast period.

Exceedance Probability > 100/150/200 mm

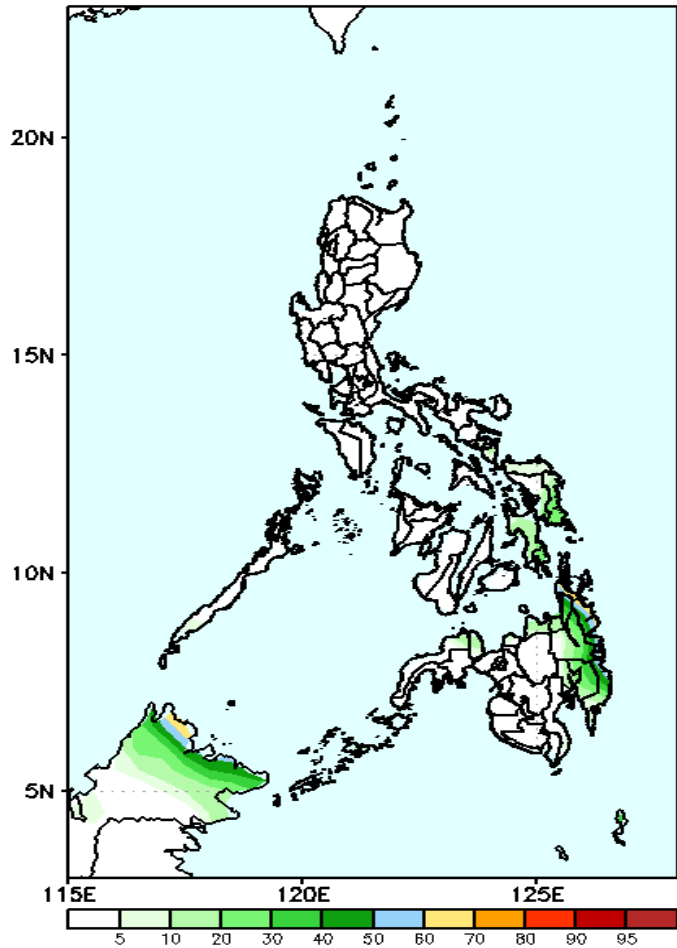
Week 1: Jan 14-20, 2022

GEFS Week-1 Exceedance Prob. > 100mm
Valid: 20220114 - 20220120



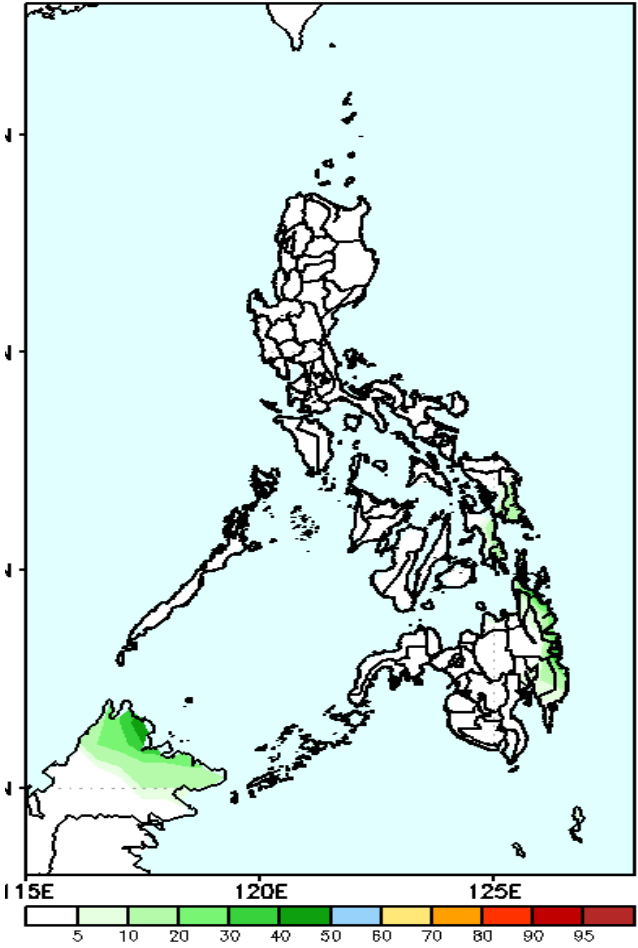
High probability of rainfall to exceed 100mm in the eastern parts of Mindanao while less likely for the rest of the county during the forecast period.

GEFS Week-1 Exceedance Prob. > 150mm
Valid: 20220114 - 20220120



Less probability of rainfall to exceed 150mm in most parts of the country is expected during the forecast period.

FS Week-1 Exceedance Prob. > 200mm
Valid: 20220114 - 20220120



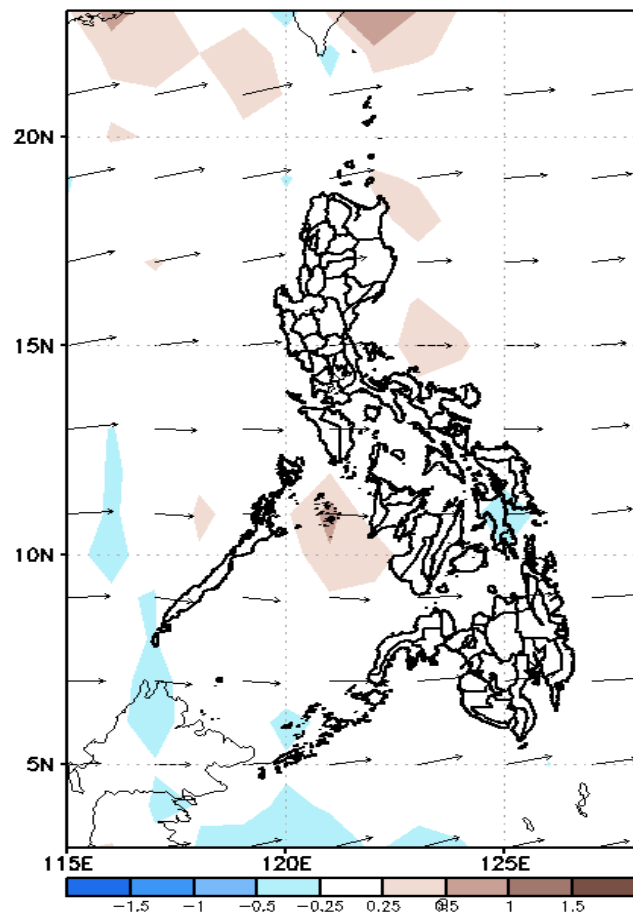
Less probability of rainfall to exceed 200mm in most parts of the country is expected during the forecast period.



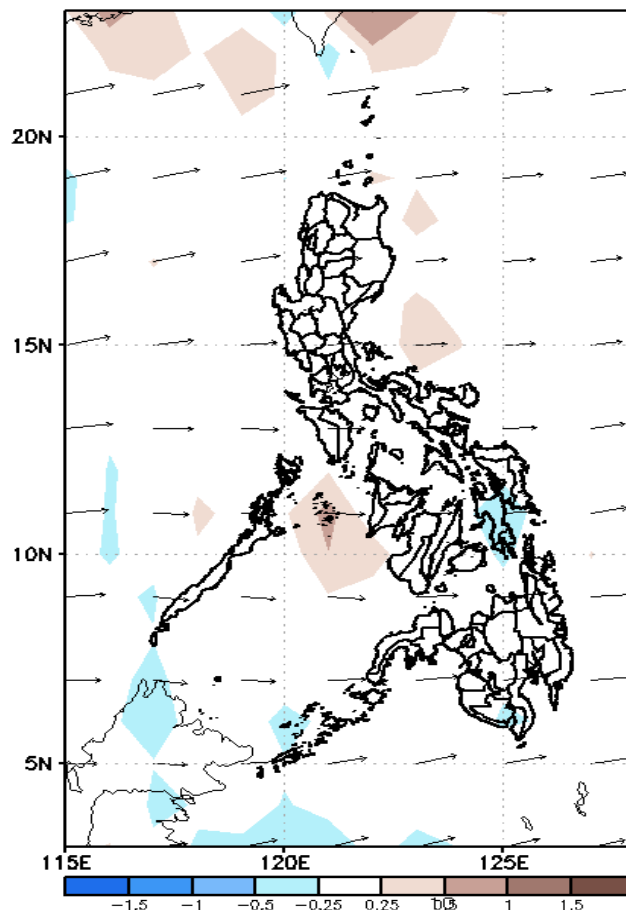
GEFS Week-2 Forecasts: Divergence & Wind Anomaly

Week 2: Jan 21-27, 2022

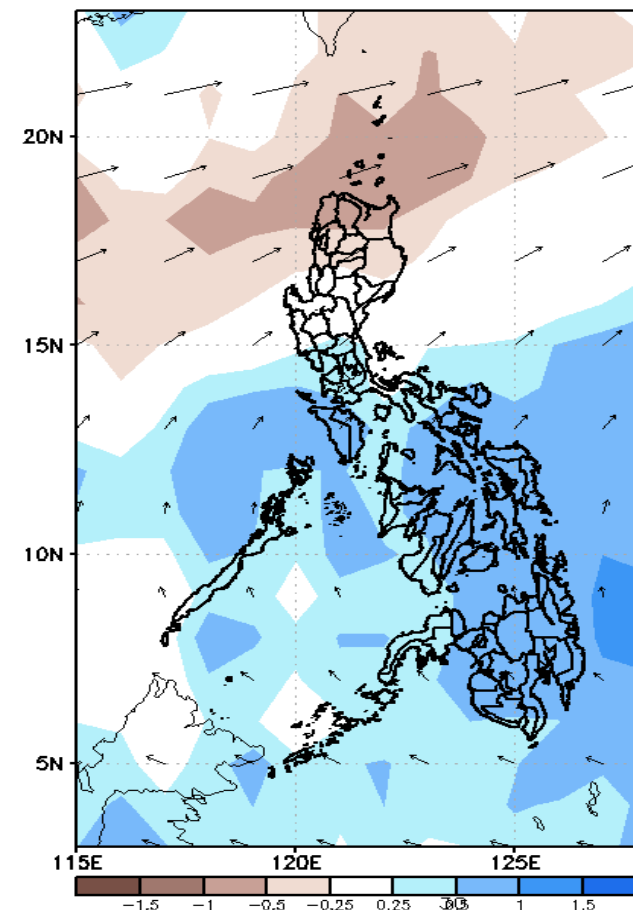
GEFS Week-2 850-hPa Divergence and Wind Anom
Valid: 20220121 - 20220127



GEFS Week-2 700-hPa Divergence and Wind Anom
Valid: 20220121 - 20220127



GEFS week-2 200-hPa Divergence and Wind Anom
Valid: 20220121 - 20220127

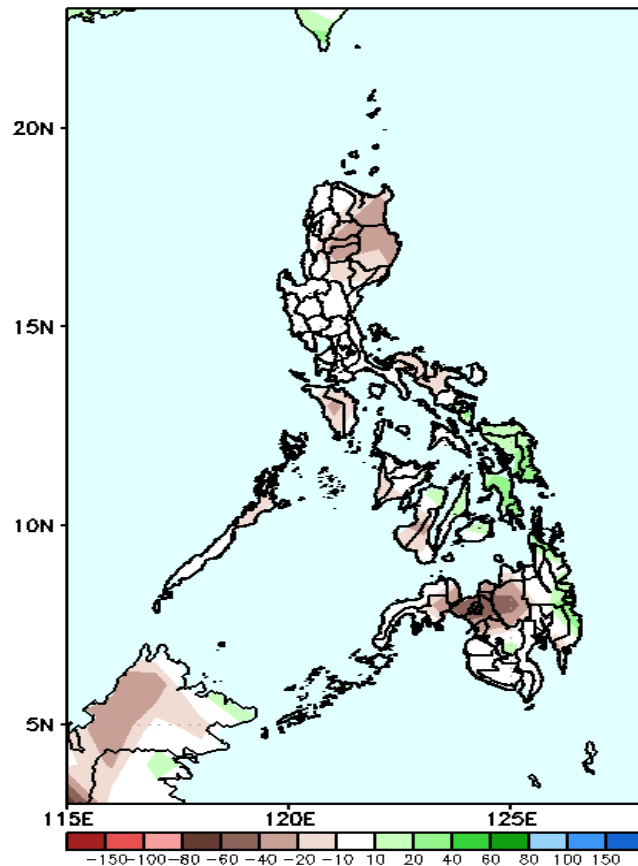


Upper and low level Divergence suggest a likelihood of light to moderate precipitation in Bulacan, most parts of Southern Luzon, Visayas and Mindanao. Northeast Monsoon affecting Northern Luzon while Easterlies affecting the rest of the country during the forecast period..

Precipitation Anomaly and Exceedance Probability > 25/50 mm

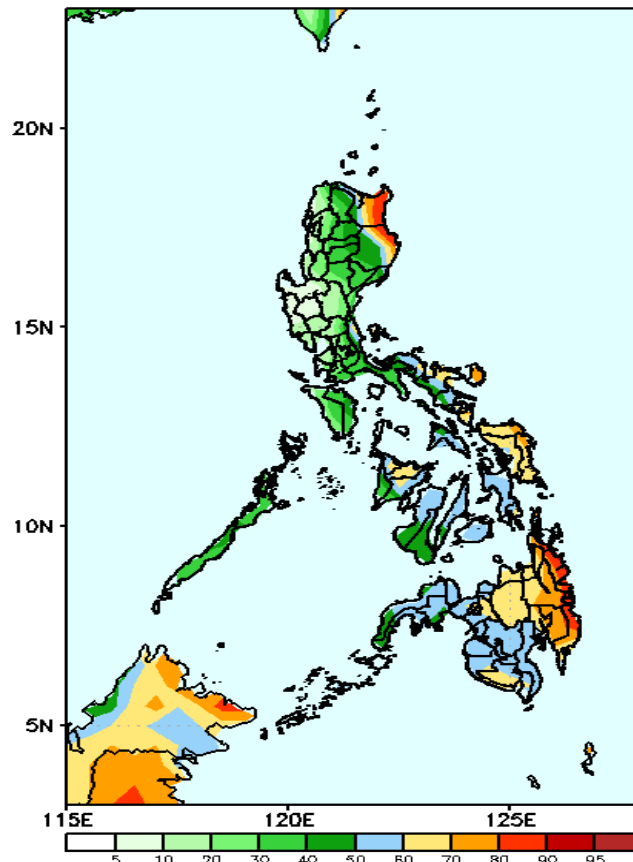
Week 2: Jan 21-27, 2022

GEFS Week-2 Precip Anomaly
Valid: 20220121 - 20220127



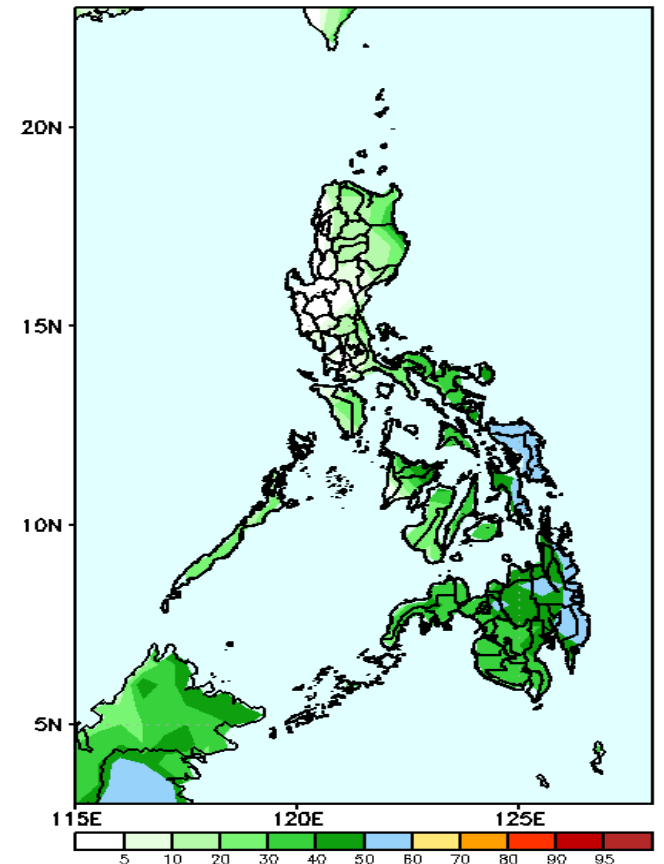
Rainfall deficit of 40-60mm is expected in most parts of the country except in the eastern parts of Visayas & Mindanao during the forecast period

GEFS Week-2 Exceedance Prob. > 25mm
Valid: 20220121 - 20220127



60-95% probability of rainfall to exceed 25mm in Cagayan, Isabela, Bicol Region, Eastern and Central Visayas, some parts of Western Visayas and most parts of Mindanao while less likely for the rest of the country during the forecast period.

GEFS Week-2 Exceedance Prob. > 50mm
Valid: 20220121 - 20220127

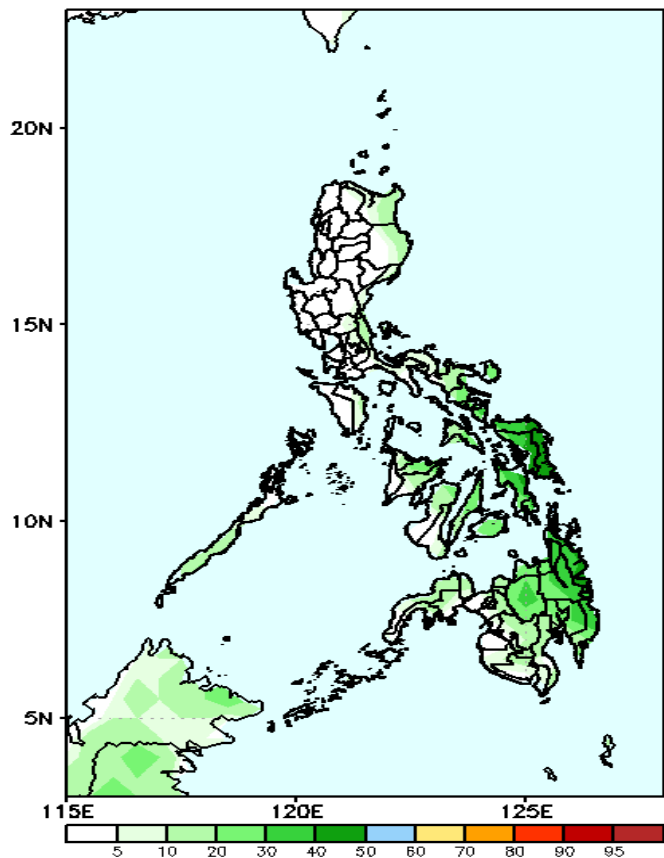


Less probability of rainfall to exceed 50mm in most parts of the country is expected during the forecast period.

Exceedance Probability > 100/150/200 mm

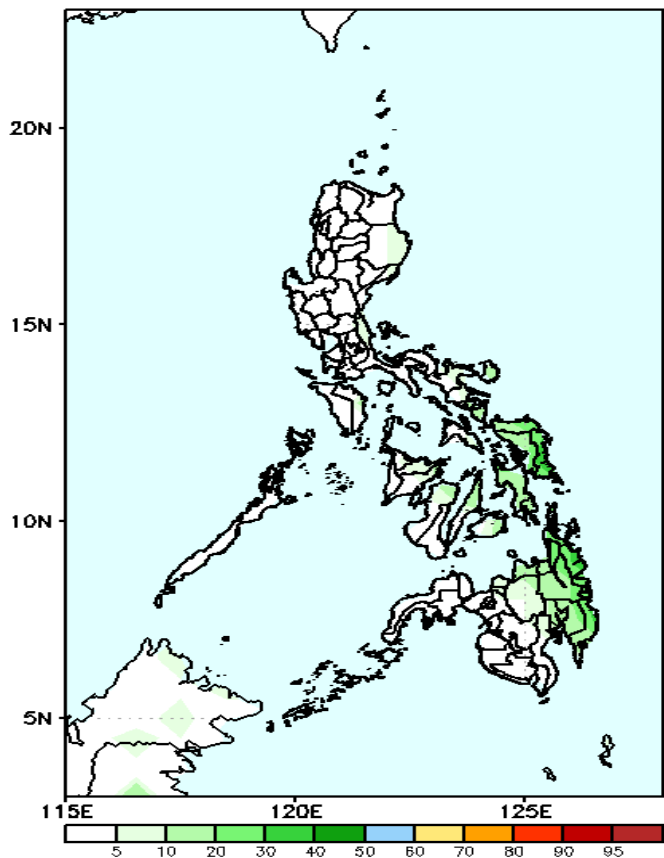
Week 2: Jan 21-27, 2022

GEFS Week-2 Exceedance Prob. > 100mm
Valid: 20220121 - 20220127



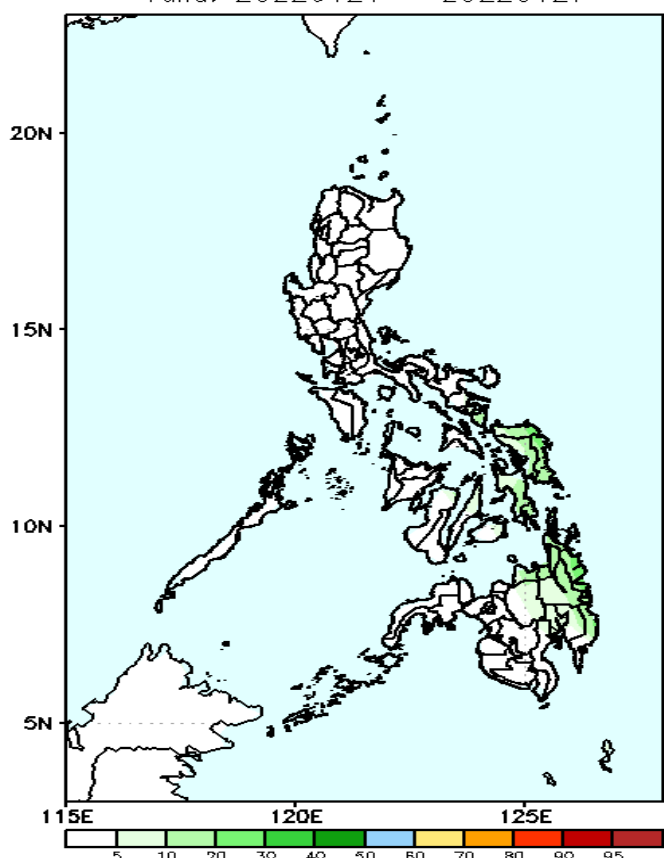
Less probability of rainfall to exceed 100mm in most parts of the country is expected during the forecast period.

GEFS Week-2 Exceedance Prob. > 150mm
Valid: 20220121 - 20220127



Less probability of rainfall to exceed 150mm in most parts of the country is expected during the forecast period.

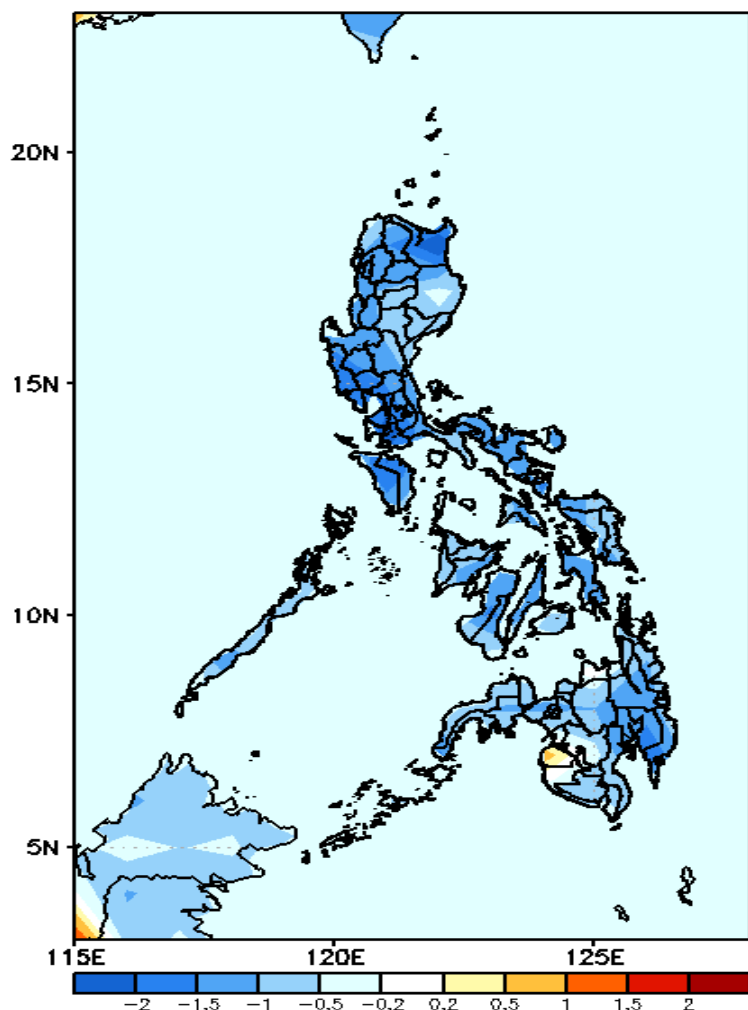
GEFS Week-2 Exceedance Prob. > 200mm
Valid: 20220121 - 20220127



Less probability of rainfall to exceed 200mm in most parts of the country is expected during the forecast period.

GEFS Week-1 & 2 Forecasts: T2m Anomaly

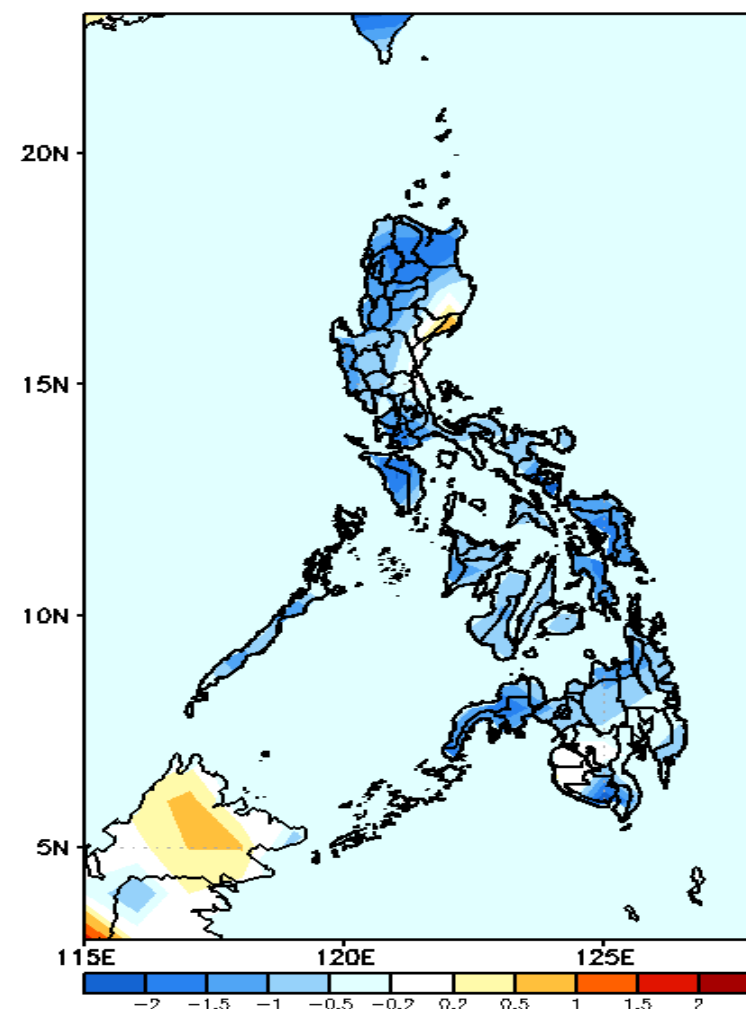
GEFS Week-1 T2m Anomaly
Valid: 20220114 - 20220120



2m Temperature Week 1: Jan 14-20, 2022

Cooler than average surface air temperature will likely experience in most parts of the country except in Maguindanao during the forecast period.

GEFS Week-2 T2m Anomaly
Valid: 20220121 - 20220127



2m Temperature Week 2: Jan 21-27, 2022

Cooler than average surface air temperature will likely experience in most parts of the country during the forecast period.