



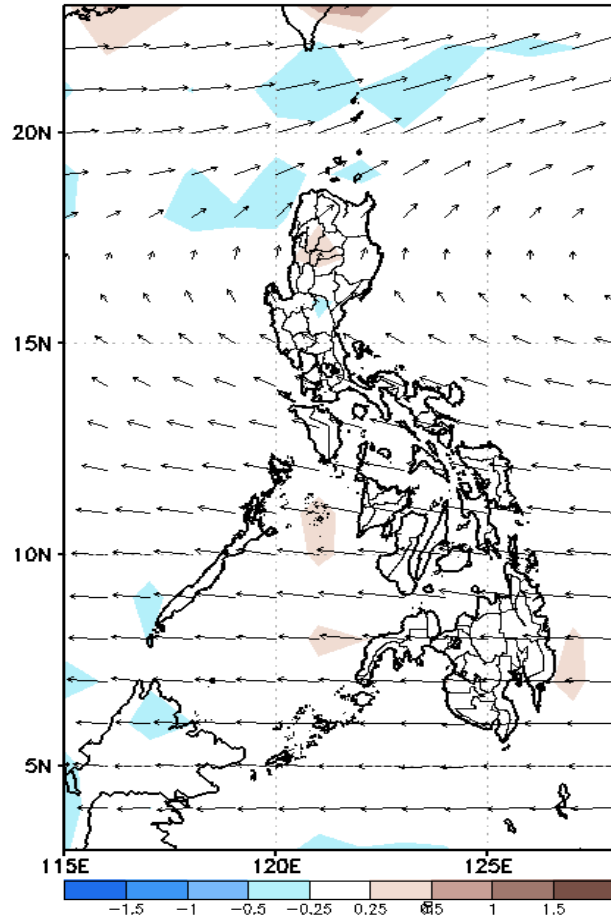
Week 1 & Week 2 Forecast for the Philippines using GEFS Model



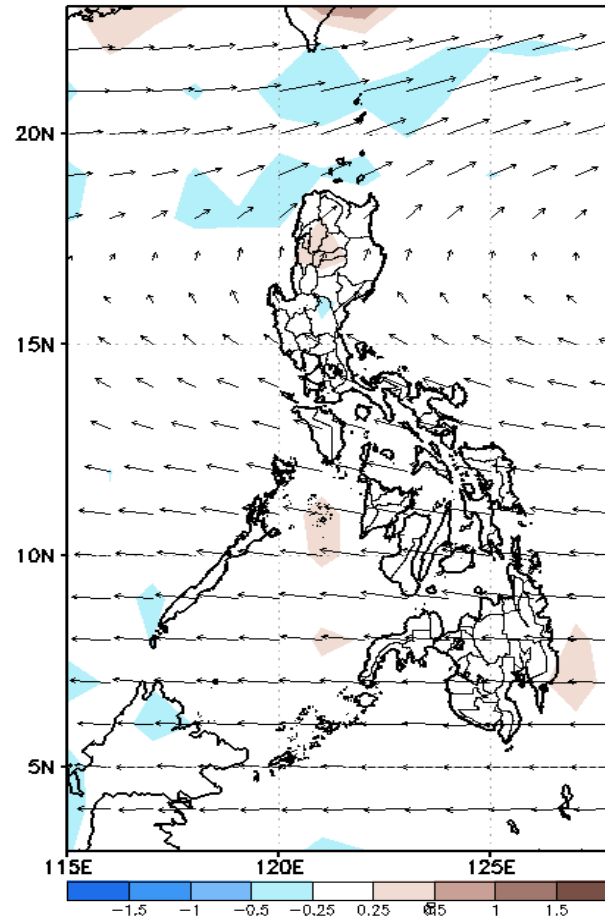
GEFS Week-1 Forecasts: Divergence & Wind Anomaly

Week 1: Mar 14-20, 2022

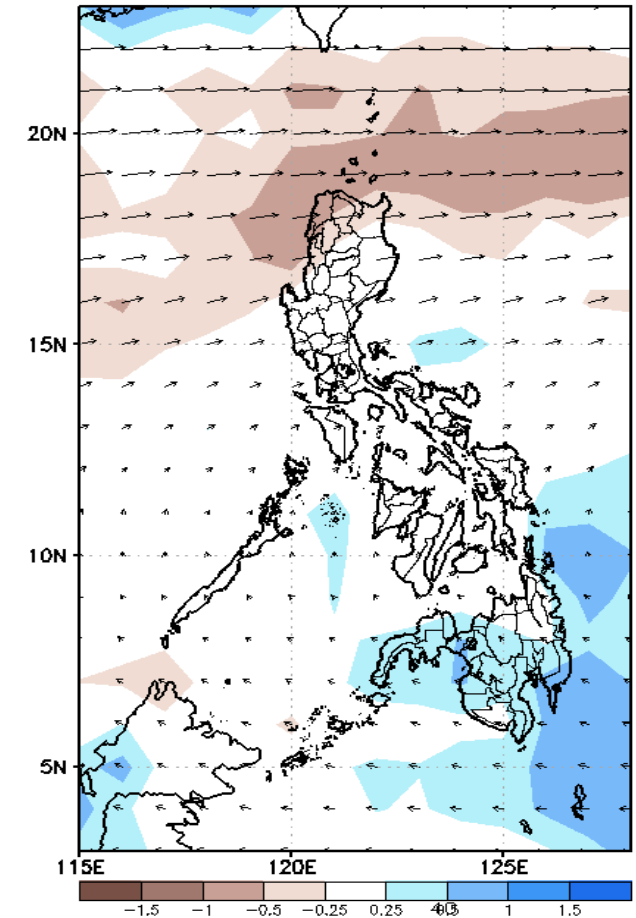
GEFS Week-1 850-hPa Divergence and Wind Anom
Valid: 20220314 - 20220320



GEFS Week-1 700-hPa Divergence and Wind Anom
Valid: 20220314 - 20220320



GEFS Week-1 200-hPa Divergence and Wind Anom
Valid: 20220314 - 20220320

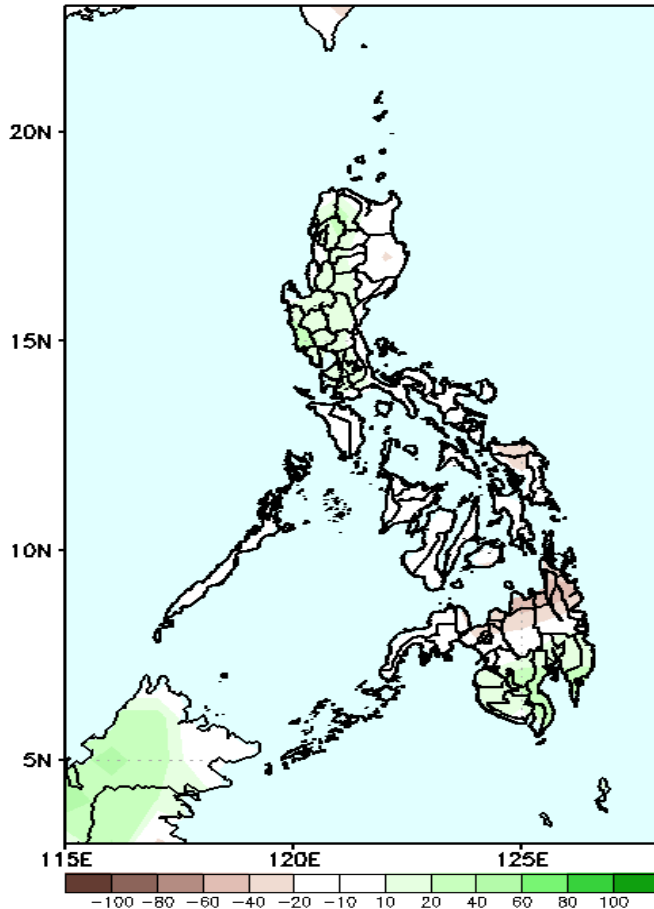


Upper and low level Divergence suggest a likelihood of light precipitation in most parts of Mindanao. Easterlies affecting most parts of the country during the forecast period.

Precipitation Anomaly and Exceedance Probability > 25/50 mm

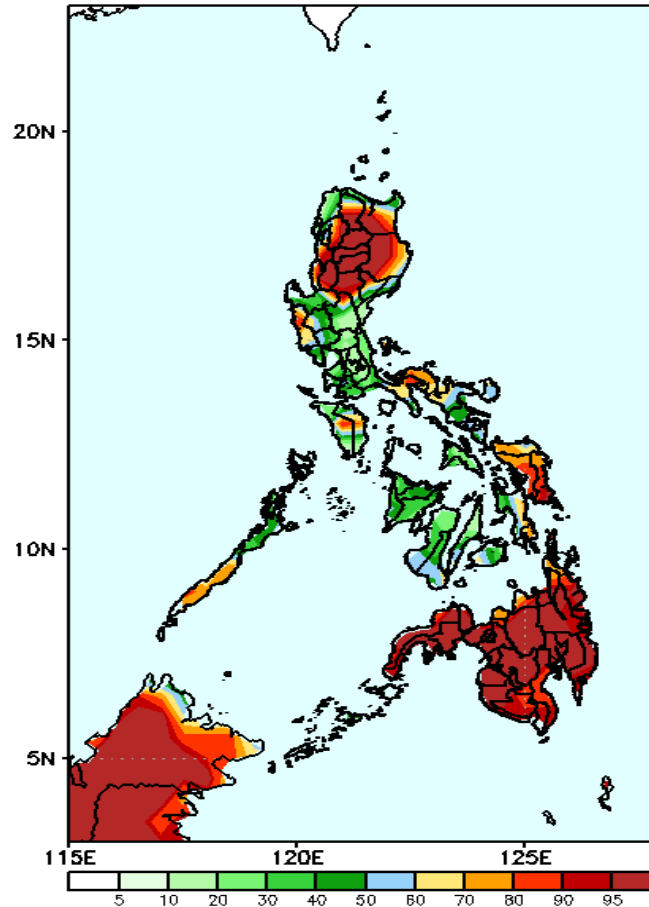
Week 1: Mar 14-20, 2022

GEFS Week-1 Precip. Anomaly
Valid: 20220314 - 20220320



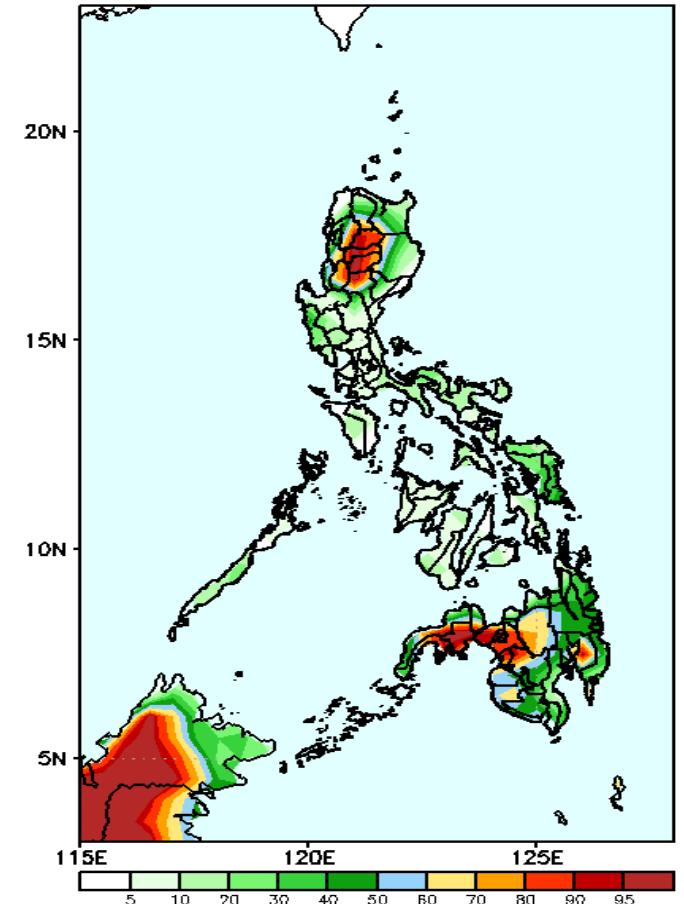
Increase of rainfall of 20-40mm in Western Luzon and Southern Mindanao while 20-50mm rainfall deficit for the rest of the country during the forecast period.

GEFS Week-1 Exceedance Prob. > 25mm
Valid: 20220314 - 20220320



High probability of rainfall to exceed 25mm in most parts of Ilocos & Cordillera Region, Cagayan Valley, Zambales, parts of Mindoro & Quezon, southern Palawan, Camarines Norte, Eastern Visayas, Southern Leyte and most parts of Mindanao while less likely for the rest of the country during the forecast period.

GEFS Week-1 Exceedance Prob. > 50mm
Valid: 20220314 - 20220320

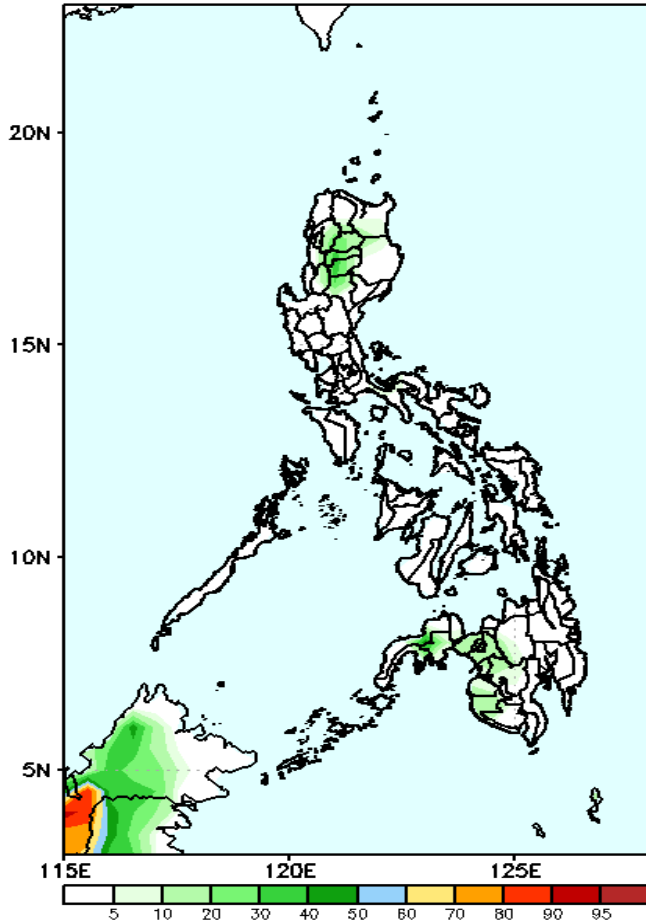


High probability of rainfall to exceed 50mm in most parts of Cordillera Region, Nueva Viscaya, Zamboanga del Sur, Lanao Provinces, North Cotabato and Compostela Valley while less likely for the rest of the country during the forecast period.

Exceedance Probability > 100/150/200 mm

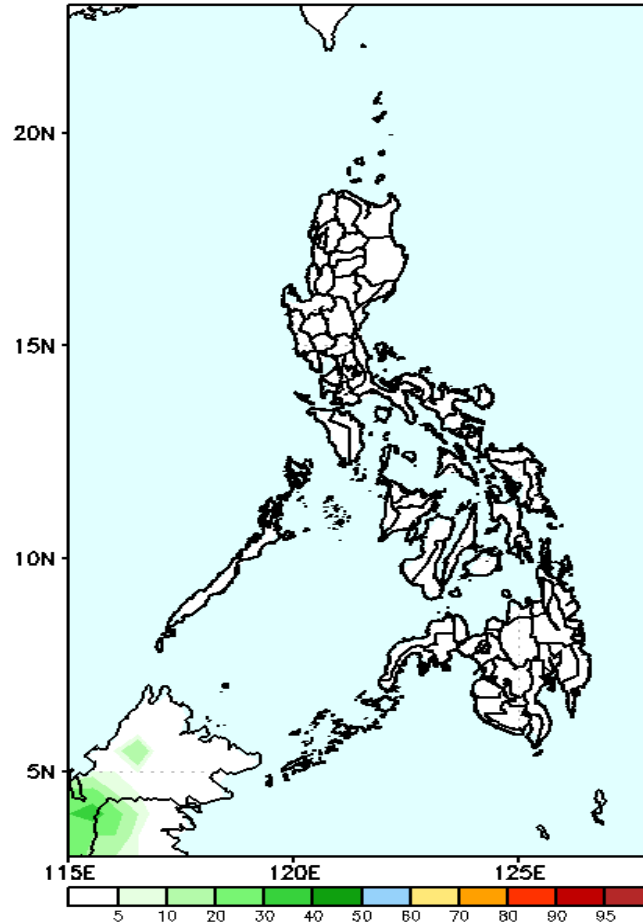
Week 1: Mar 14-20, 2022

GEFS Week-1 Exceedance Prob. > 100mm
Valid: 20220314 - 20220320



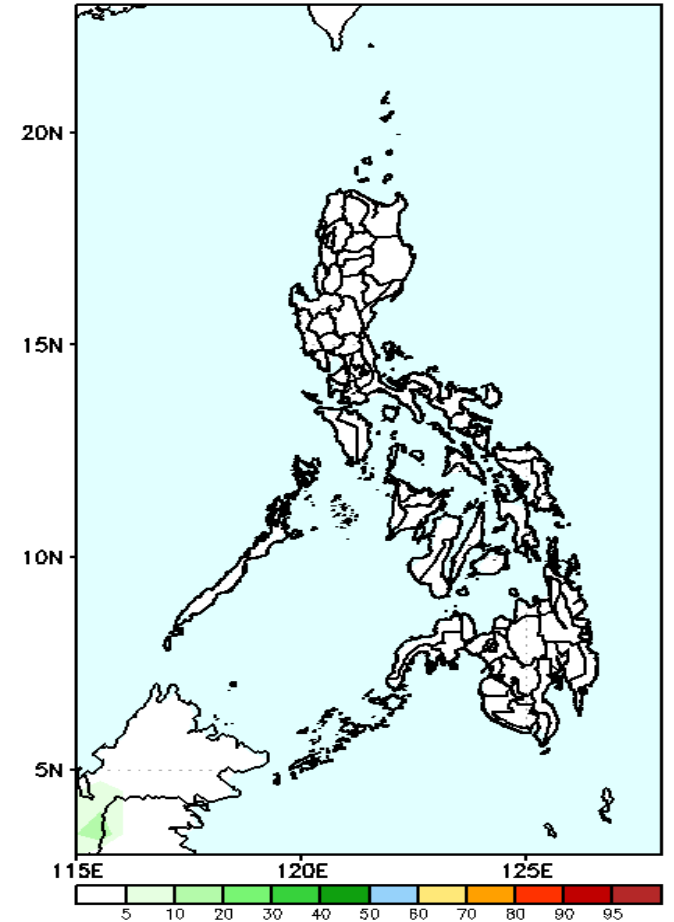
Low probability of rainfall to exceed 100mm in most parts of the country during the forecast period.

GEFS Week-1 Exceedance Prob. > 150mm
Valid: 20220314 - 20220320



Low probability of rainfall to exceed 150mm in most parts of the country during the forecast period.

GEFS Week-1 Exceedance Prob. > 200mm
Valid: 20220314 - 20220320



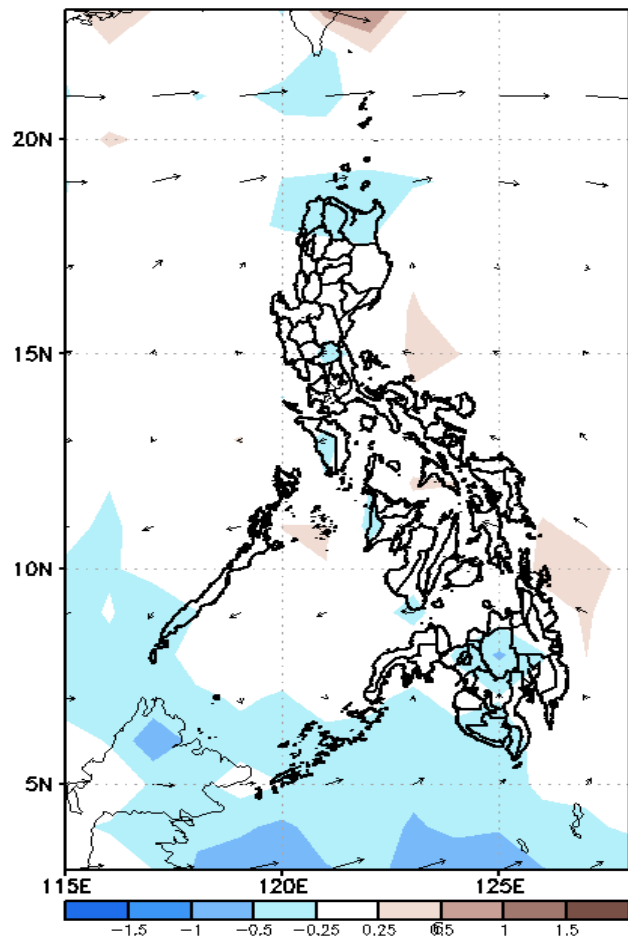
Low probability of rainfall to exceed 200mm in most parts of the country during the forecast period.



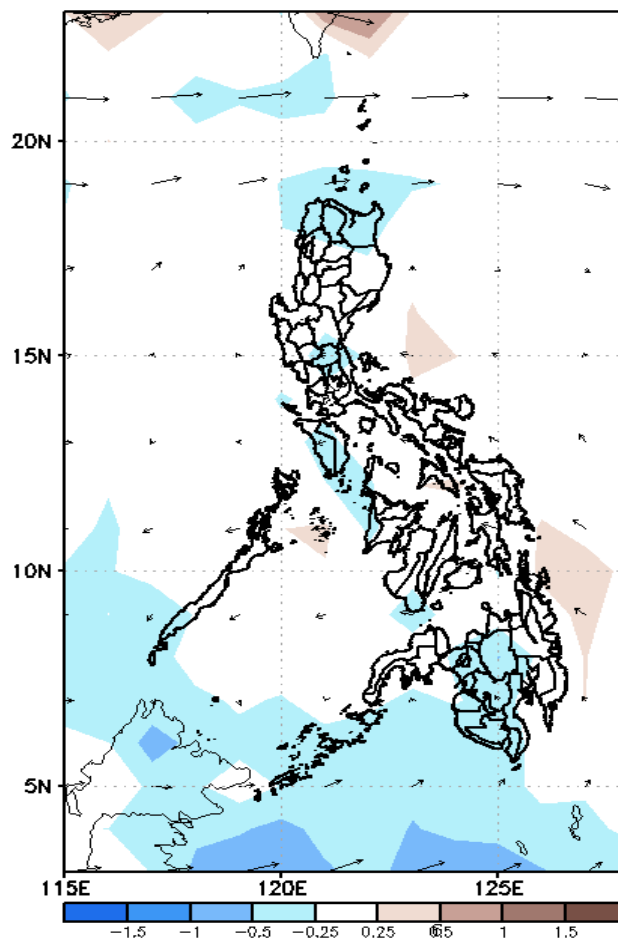
GEFS Week-2 Forecasts: Divergence & Wind Anomaly

Week 2: Mar 21-27, 2022

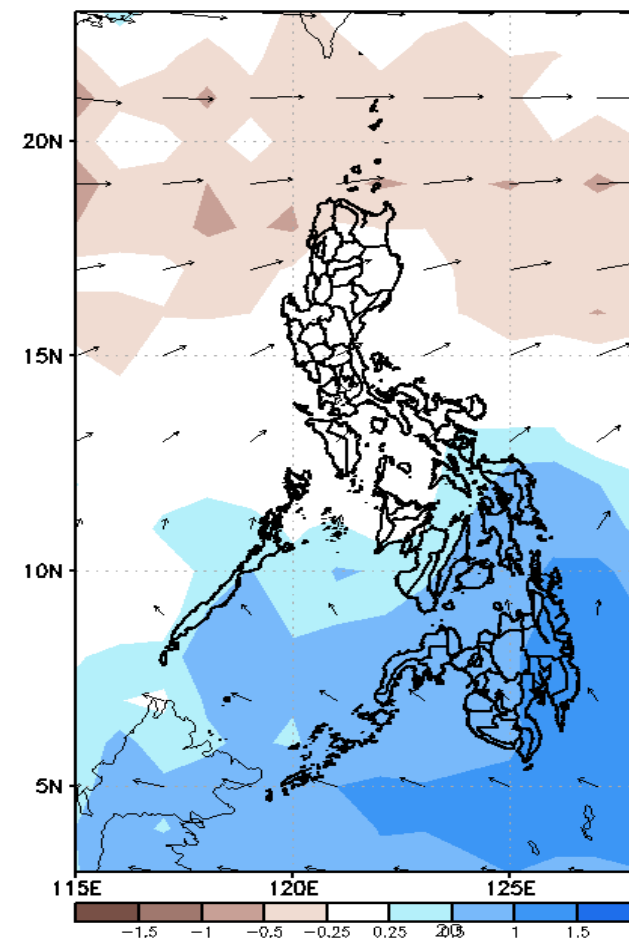
GEFS Week-2 850-hPa Divergence and Wind Anom
Valid: 20220321 - 20220327



GEFS Week-2 700-hPa Divergence and Wind Anom
Valid: 20220321 - 20220327



GEFS week-2 200-hPa Divergence and Wind Anom
Valid: 20220321 - 20220327

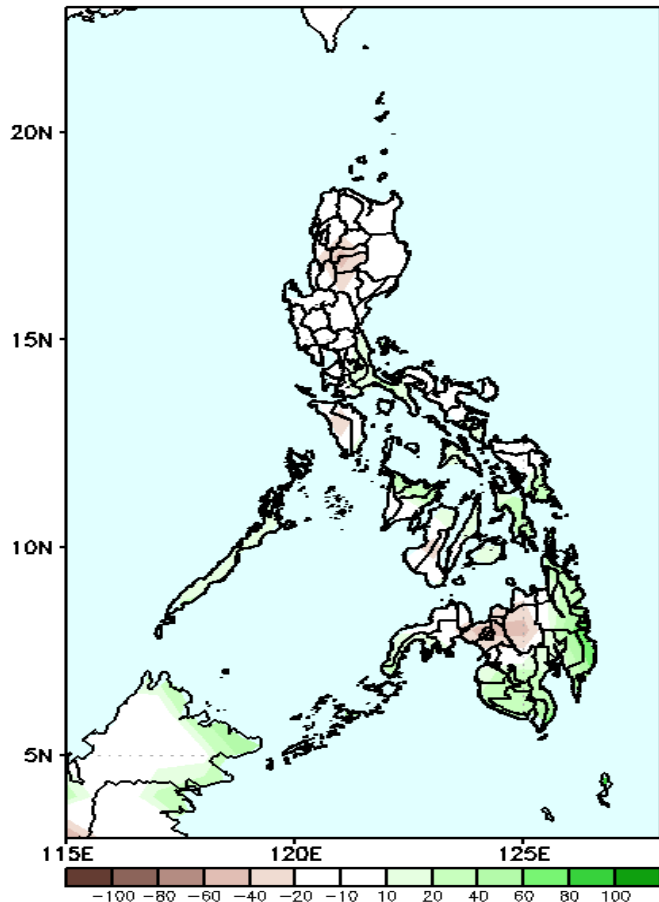


Upper and low level Divergence suggest a likelihood of light to moderate precipitation in Palawan and most parts of the country. Easterlies affecting most parts of the country during the forecast period.

Precipitation Anomaly and Exceedance Probability > 25/50 mm

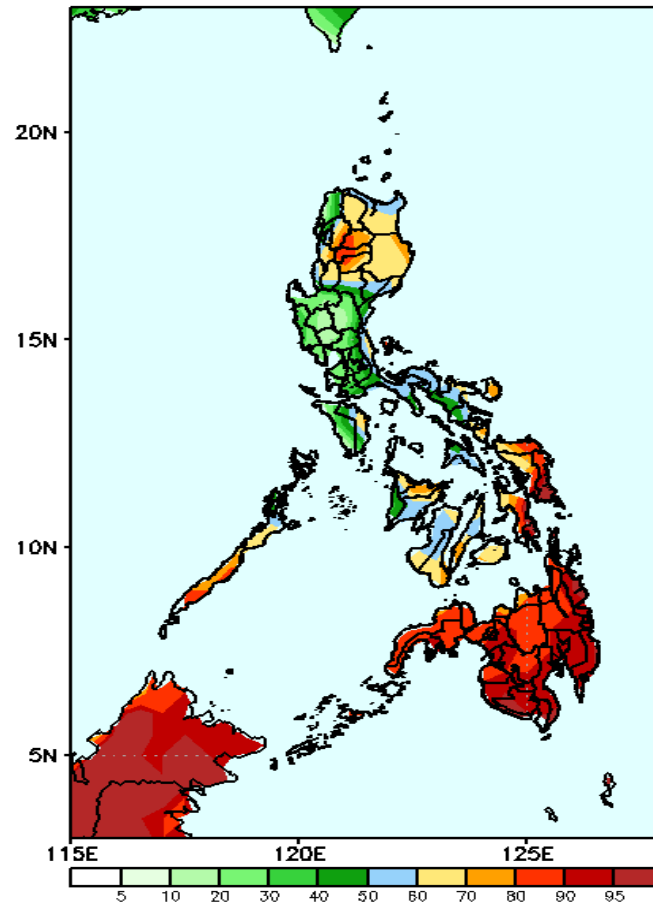
Week 2: Mar 21-27, 2022

GEFS Week-2 Precip Anomaly
Valid: 20220321 - 20220327



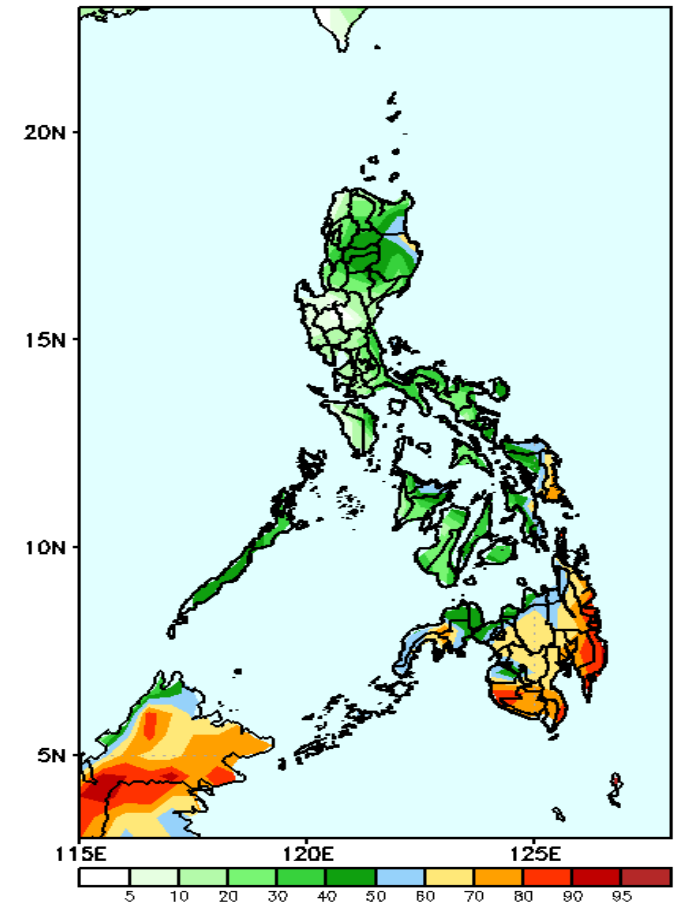
20-70mm Increase of rainfall is expected in CALABARZON, Bicol Region and most parts of Mindanao while 20-30mm rainfall deficit in Bukidnon during the forecast period.

GEFS Week-2 Exceedance Prob. > 25mm
Valid: 20220321 - 20220327



50-75% probability of rainfall to exceed 25mm in most parts of Luzon & Visayas and higher probability to exceed in Cordillera Region, Palawan, Eastern Visayas and Mindanao during the forecast period

GEFS Week-2 Exceedance Prob. > 50mm
Valid: 20220321 - 20220327

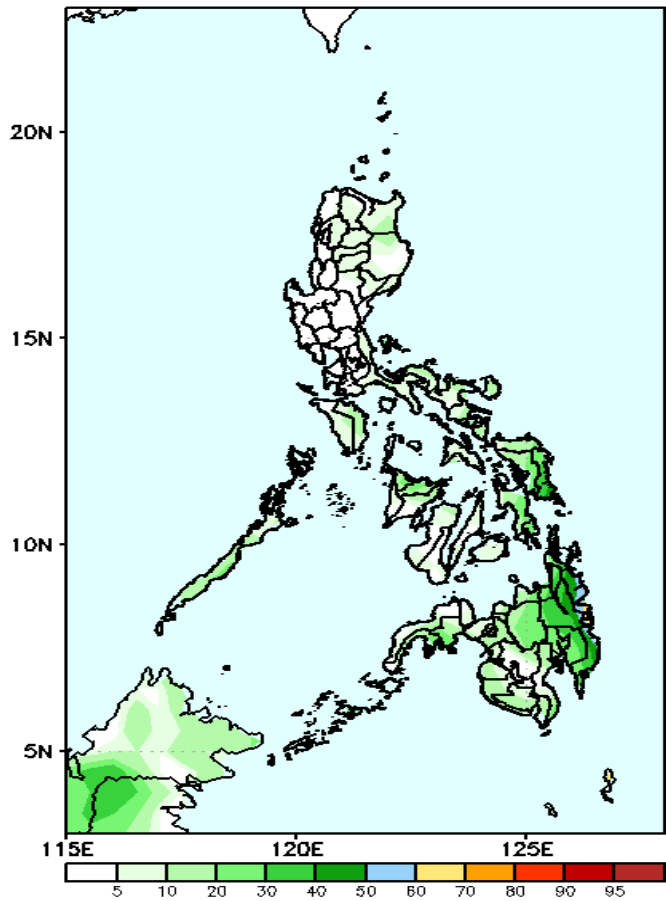


60-95% probability of rainfall to exceed 50mm in Eastern Samar and most parts of Mindanao while less likely for the rest of the country during the forecast period

Exceedance Probability > 100/150/200 mm

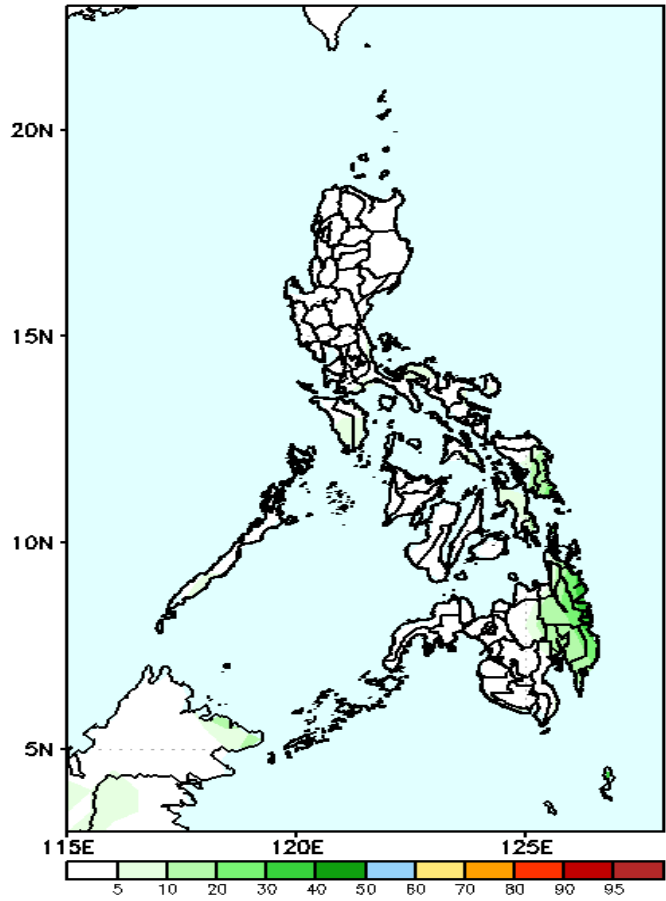
Week 2: Mar 21-27, 2022

GEFS Week-2 Exceedance Prob. > 100mm
Valid: 20220321 – 20220327



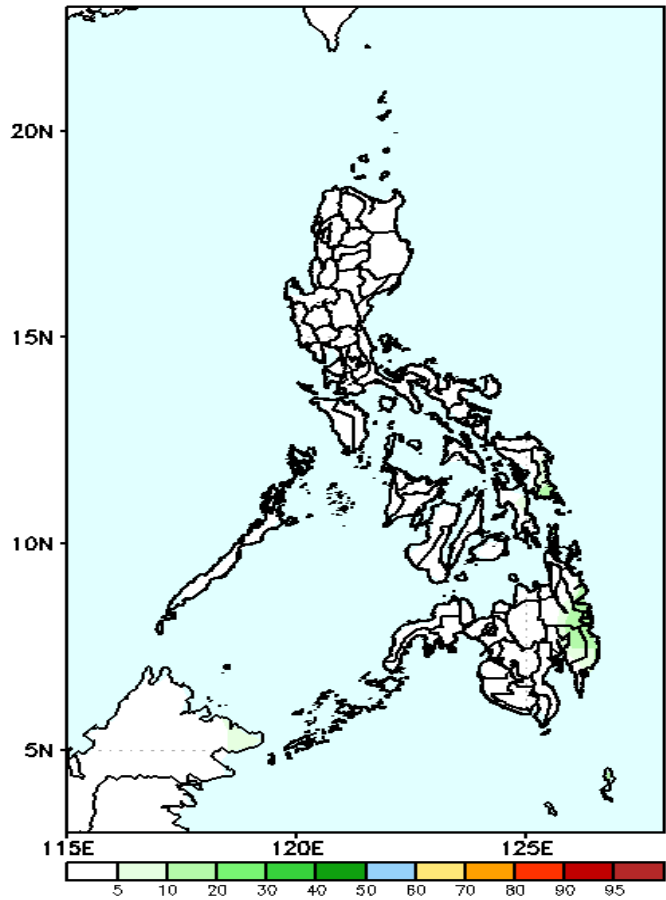
Low probability of rainfall to exceed 100mm in most parts of the country during the forecast period.

GEFS Week-2 Exceedance Prob. > 150mm
Valid: 20220321 – 20220327



Low probability of rainfall to exceed 150mm in most parts of the country during the forecast period.

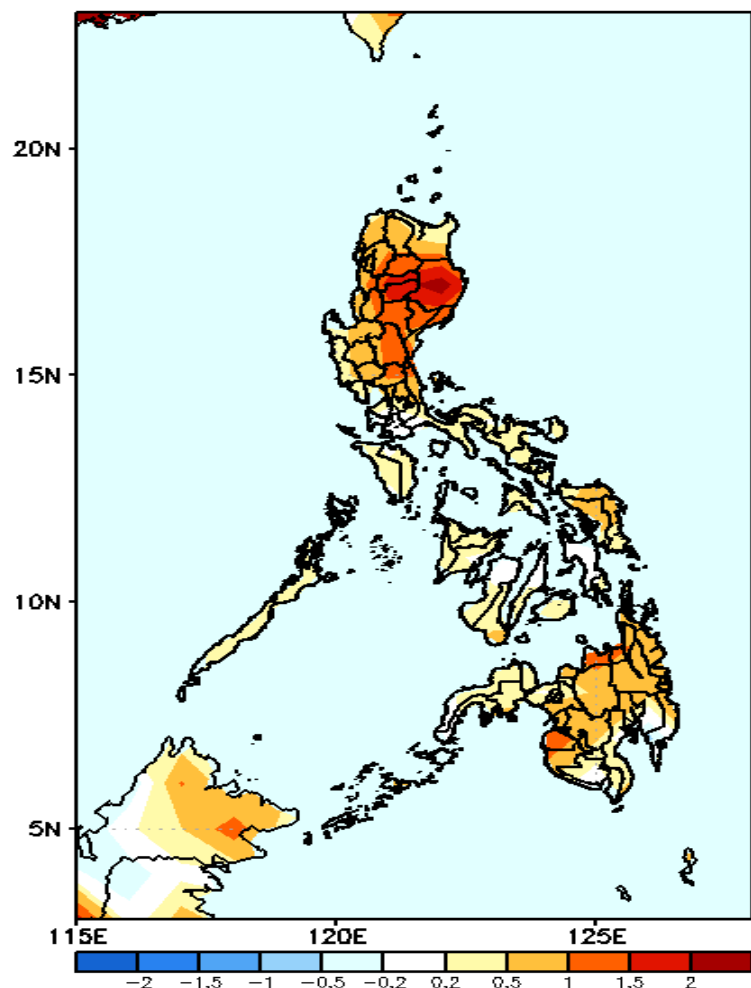
GEFS Week-2 Exceedance Prob. > 200mm
Valid: 20220321 – 20220327



Low probability of rainfall to exceed 200mm in most parts of the country during the forecast period.

GEFS Week-1 & 2 Forecasts: T2m Anomaly

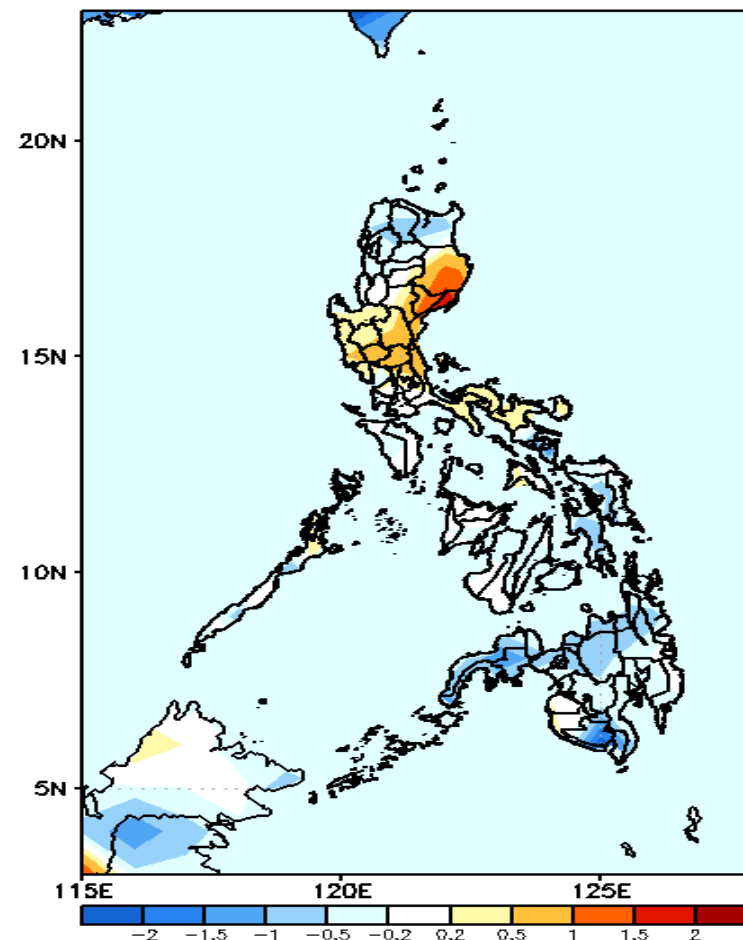
GEFS Week-1 T2m Anomaly
Valid: 20220314 – 20220320



2m Temperature Week 1: Mar 14-20, 2022

Warmer than average surface air temperature will likely experience in most parts of Luzon, Misamis Oriental & Maguindanao while average to slightly warmer temperature for the rest of the country during the forecast period.

GEFS Week-2 T2m Anomaly
Valid: 20220321 – 20220327



2m Temperature Week 2: Mar 21-27, 2022

Average to slightly cooler than average surface air temperature will likely experience in northern Luzon, Mindoro, Palawan and in most parts of Visayas & Mindanao while slightly warmer to warmer temperature is expected for the rest of Luzon during the forecast period.