



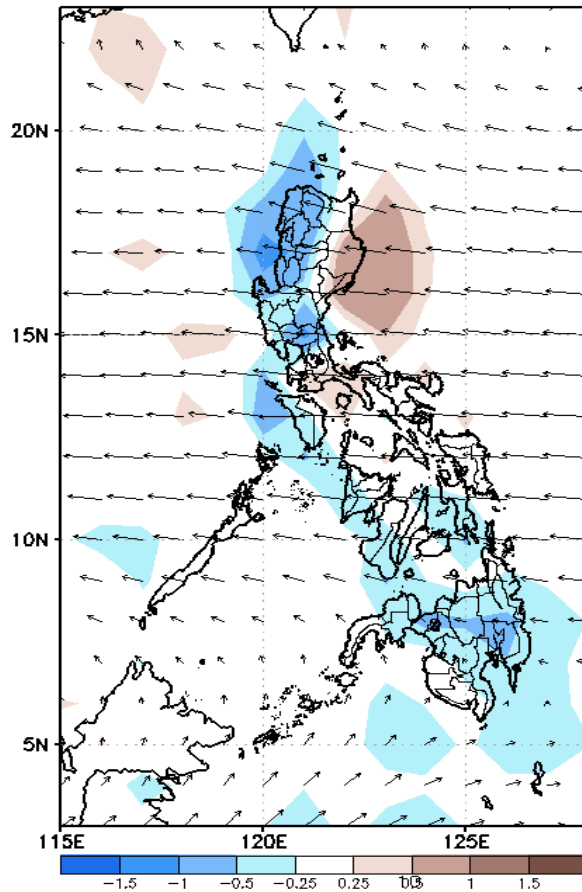
# Week 1 & Week 2 Forecast for the Philippines using GEFS Model



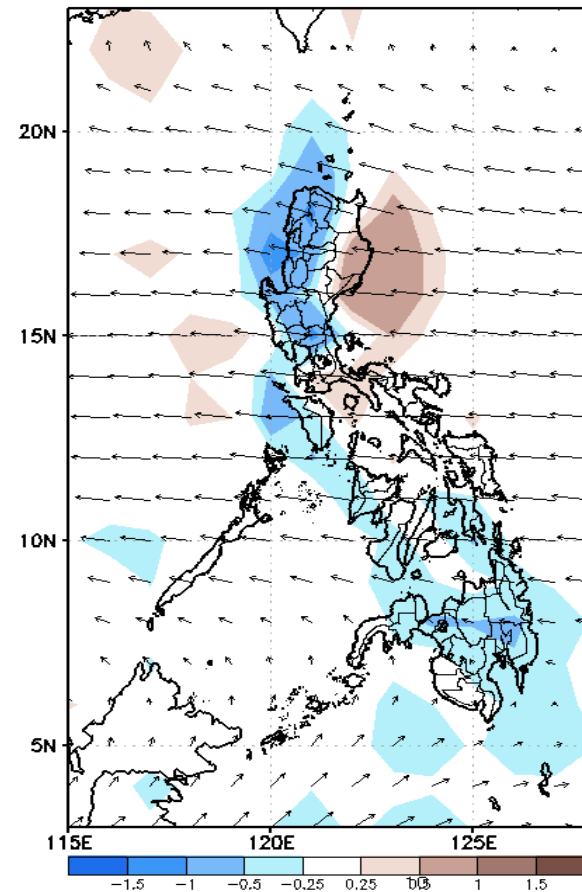
# GEFS Week-1 Forecasts: Wind Anomaly Forecast

Week 1: Nov 14-20, 2022

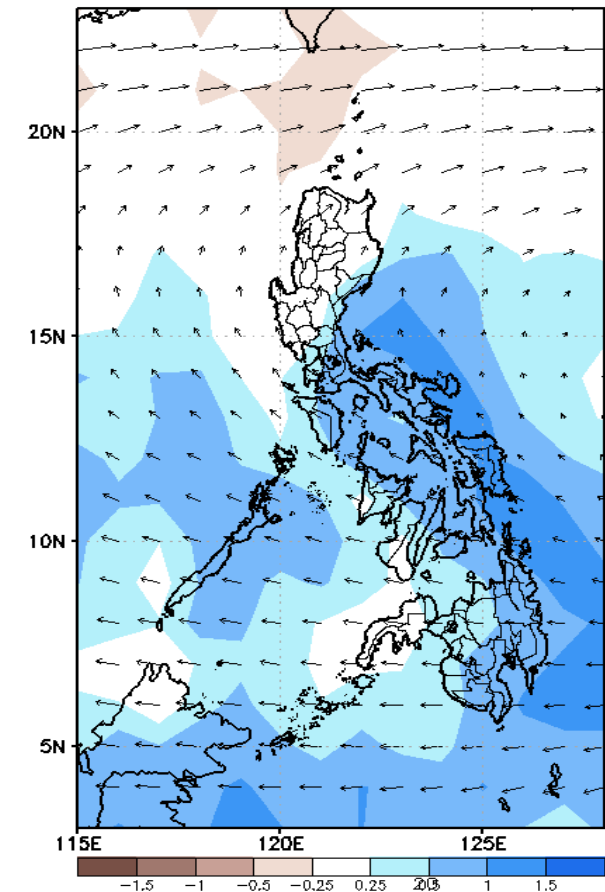
GEFS Week-1 850-hPa Divergence and Wind Anom  
Valid: 20221114 - 20221120



GEFS Week-1 700-hPa Divergence and Wind Anom  
Valid: 20221114 - 20221120



GEFS Week-1 200-hPa Divergence and Wind Anom  
Valid: 20221114 - 20221120

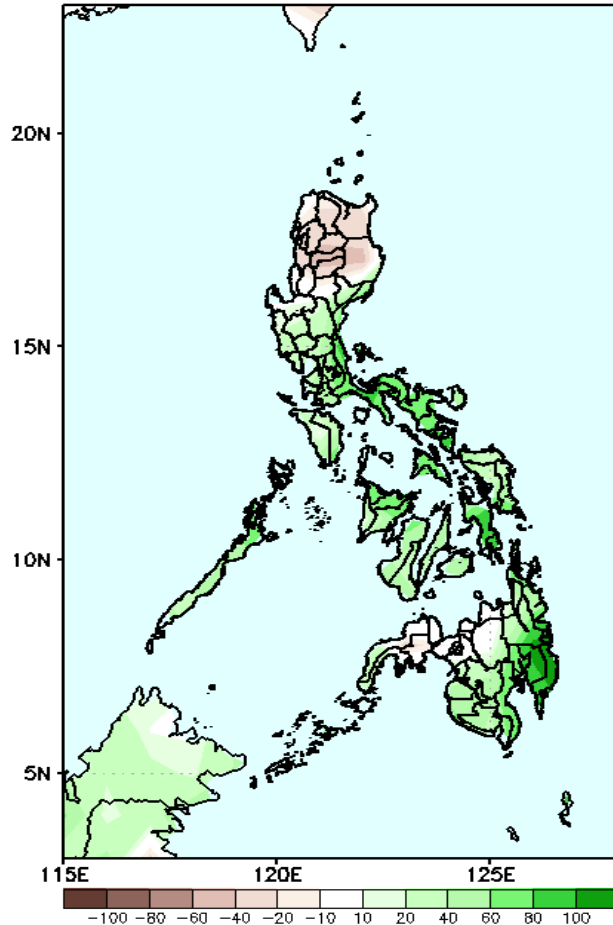


Northeast Monsoon is forecasted to affect Northern Luzon; Easterlies will likely affect the rest of the country during the forecast period.

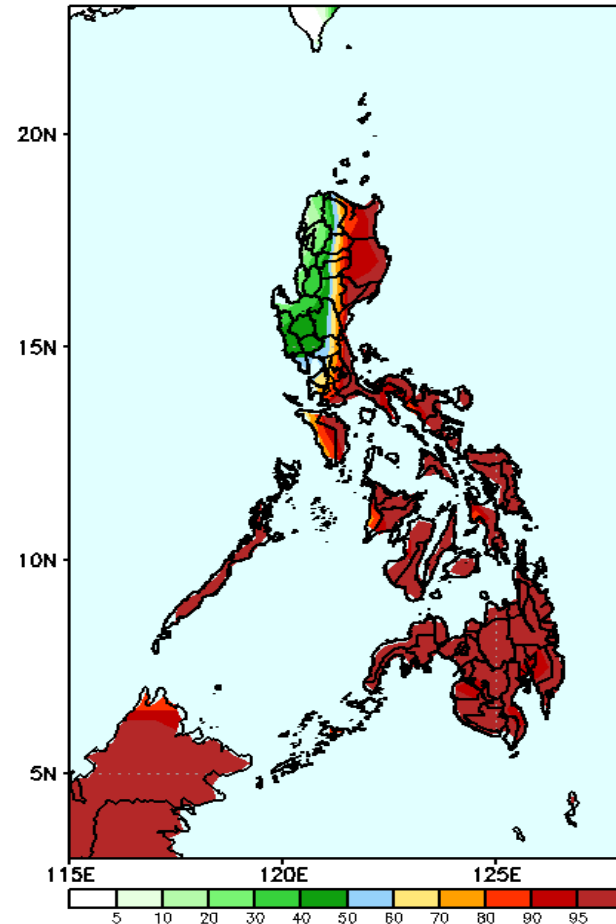
# Precipitation Anomaly and Exceedance Probability > 25/50 mm

**Week 1: Nov 14-20, 2022**

GEFS Week-1 Precip Anomaly  
Valid: 20221114 - 20221120

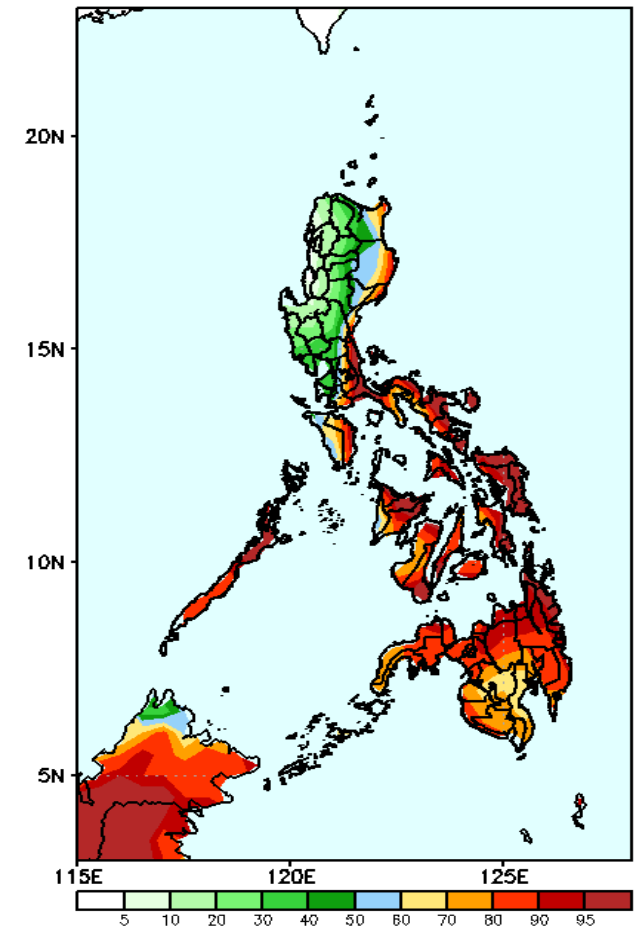


GEFS Week-1 Exceedance Prob. > 25mm  
Valid: 20221114 - 20221120



High probability of rainfall to exceed 25mm in most parts of the country except in most areas in western Luzon during the forecast period.

GEFS Week-1 Exceedance Prob. > 50mm  
Valid: 20221114 - 20221120

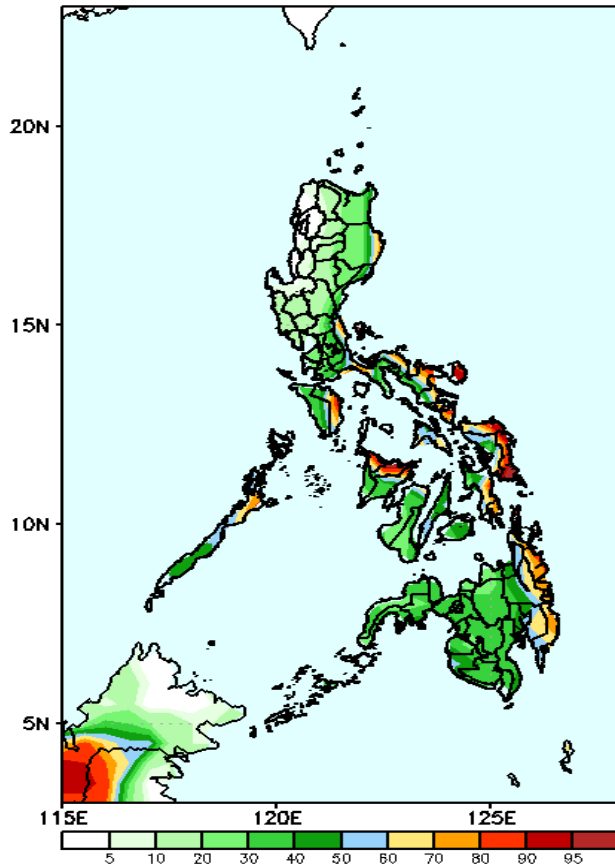


High probability of rainfall to exceed 50mm in most parts of eastern and southern Luzon, Visayas and Mindanao while less likely for the rest of the Luzon during the forecast period.

# Exceedance Probability > 100/150/200 mm

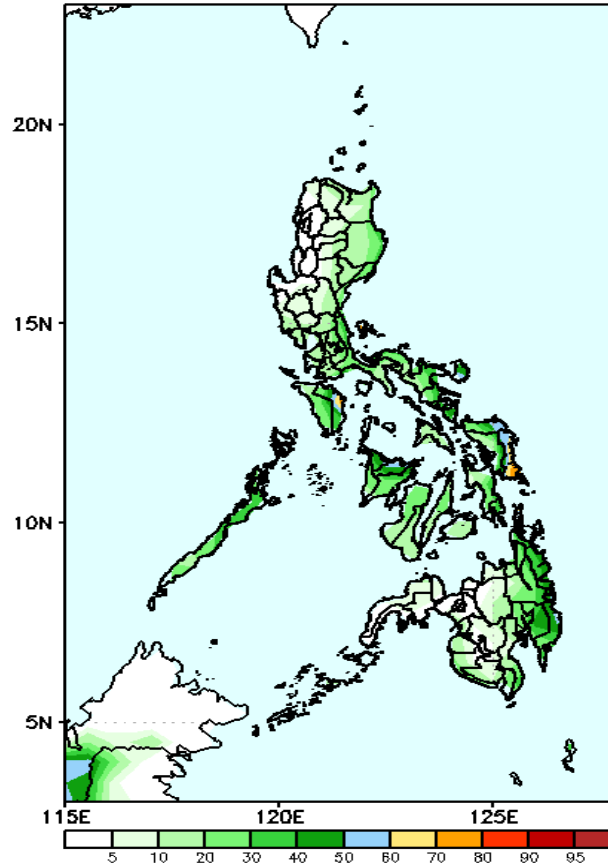
Week 1: Nov 14-20, 2022

GEFS Week-1 Exceedance Prob. > 100mm  
Valid: 20221114 - 20221120



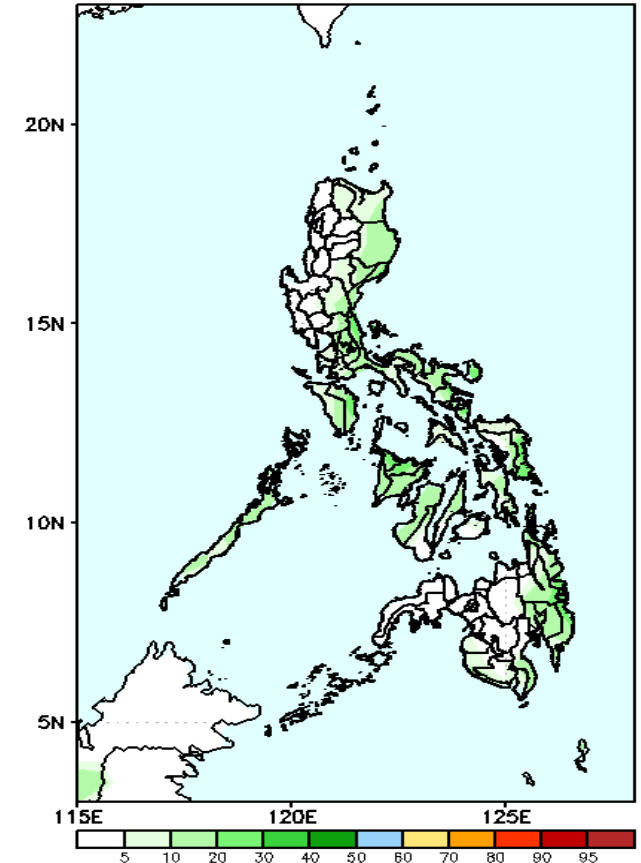
60-95% probability of rainfall to exceed 50mm in Or. Mindoro, Palawan, Bicol Region, Aklan, Capiz, eastern Visayas & Mindanao while less likely for the rest of the country during the forecast period.

GEFS Week-1 Exceedance Prob. > 150mm  
Valid: 20221114 - 20221120



Low probability of rainfall to exceed 150mm in most parts of the country during the forecast period.

GEFS Week-1 Exceedance Prob. > 200mm  
Valid: 20221114 - 20221120



Low probability of rainfall to exceed 200mm in most parts of the country during the forecast period.



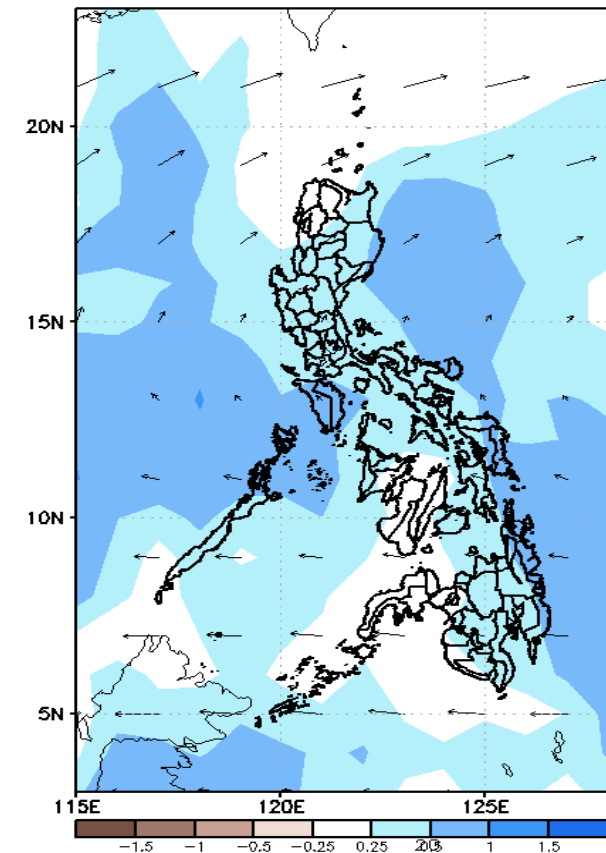
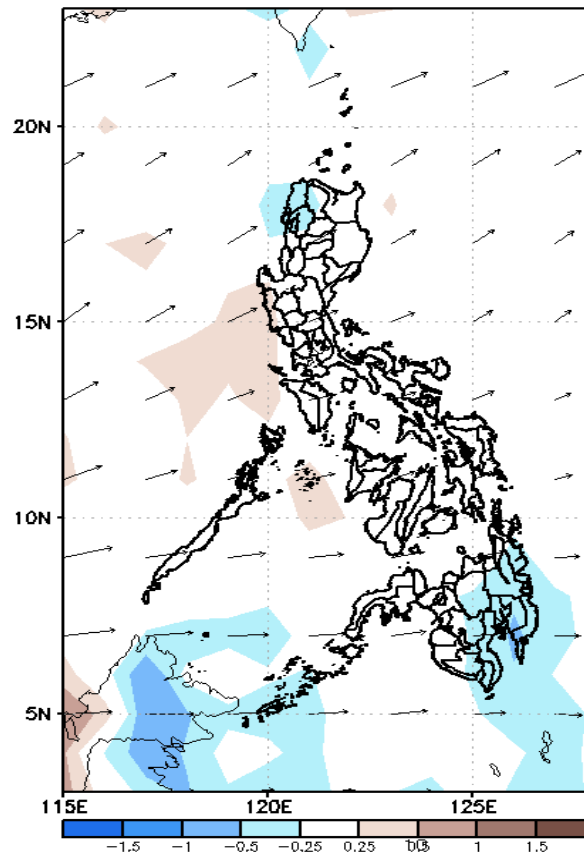
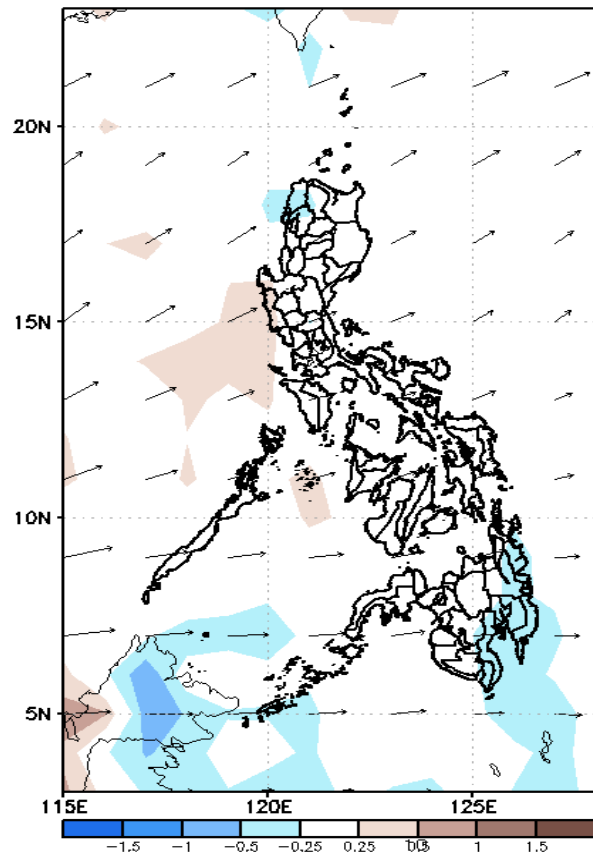
# GEFS Week-2 Forecasts: Wind Anomaly Forecast

Week 2: Nov 21-27, 2022

GEFS Week-2 850-hPa Divergence and Wind Anom  
Valid: 20221121 - 20221127

GEFS Week-2 700-hPa Divergence and Wind Anom.  
Valid: 20221121 - 20221127

GEFS week-2 200-hPa Divergence and Wind Anom.  
Valid: 20221121 - 20221127

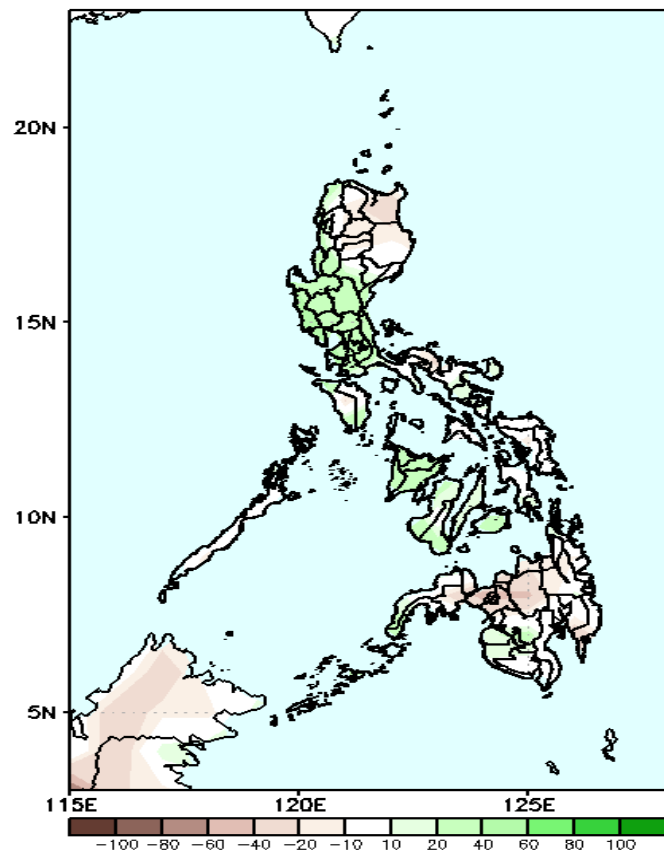


Easterlies will likely affect most parts of the country during the forecast period.

# Precipitation Anomaly and Exceedance Probability > 25/50 mm

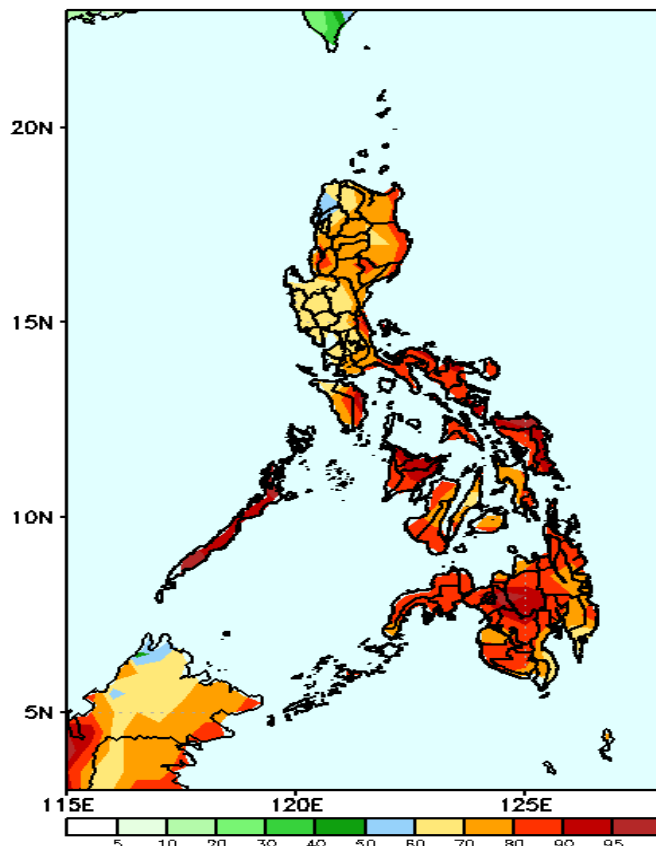
Week 2: Nov 21-27, 2022

GEFS Week-2 Precip Anomaly  
Valid: 20221121 - 20221127



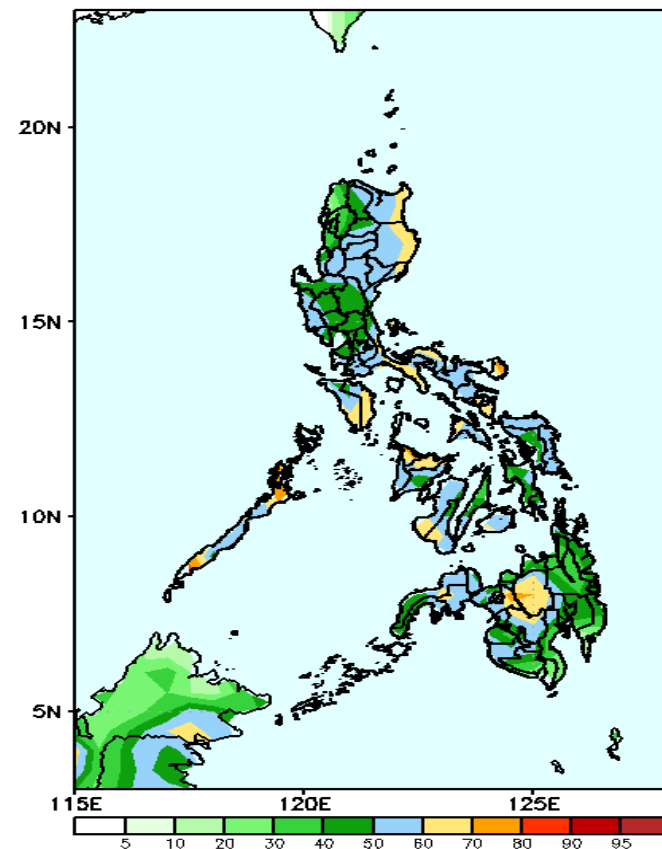
Increase of rainfall of 40-80mm is expected in most parts of Ilocos Region, central & southern Luzon, central & western Visayas while rainfall deficit of 20-40mm is most likely in Cagayan, Bukidnon and Lanao del Sur during the forecast period.

GEFS Week-2 Exceedance Prob. > 25mm  
Valid: 20221121 - 20221127



High probability of rainfall to exceed 25mm in most parts of the country during the forecast period.

GEFS Week-2 Exceedance Prob. > 50mm  
Valid: 20221121 - 20221127



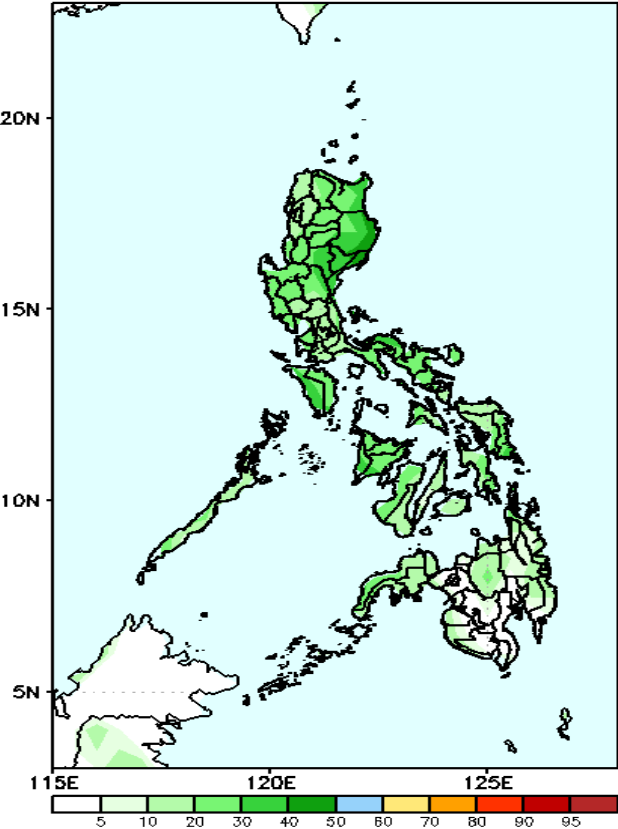
50-80% probability of rainfall to exceed 50mm in most parts of the country during the forecast period.



# Exceedance Probability > 100/150/200 mm

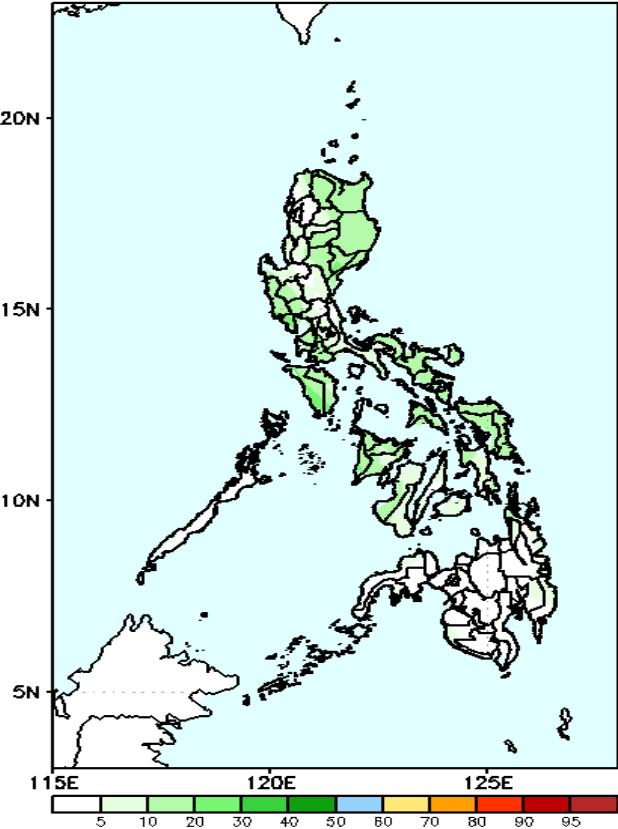
Week 2: Nov 21-27, 2022

GEFS Week-2 Exceedance Prob. > 100mm  
Valid: 20221121 - 20221127



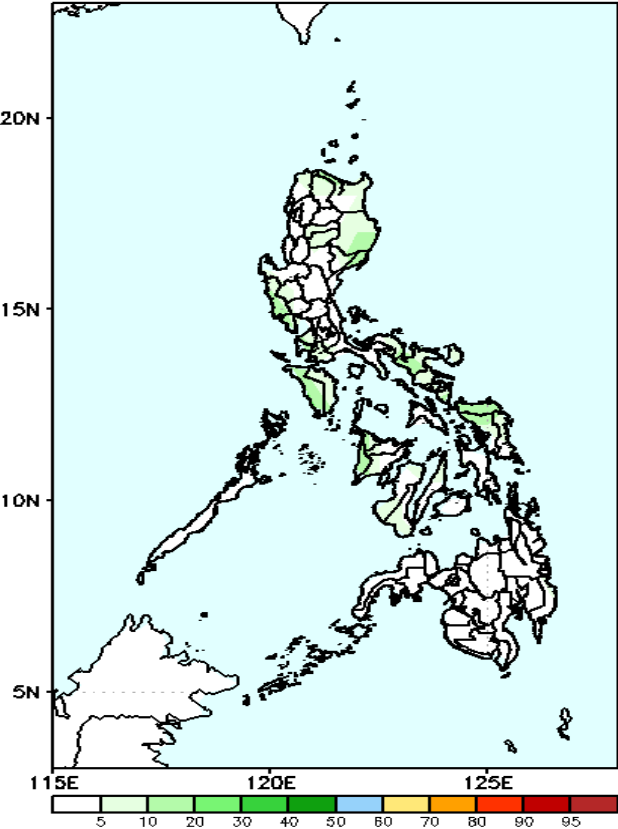
Low probability of rainfall to exceed 100mm in most parts of the country during the forecast period.

GEFS Week-2 Exceedance Prob. > 150mm  
Valid: 20221121 - 20221127



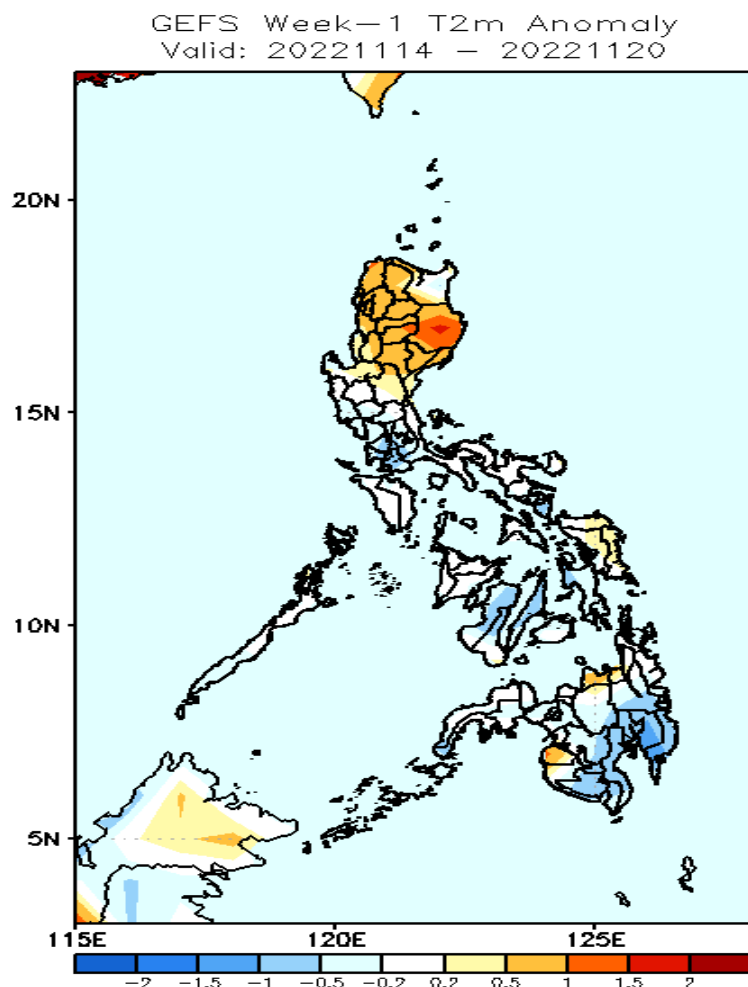
Low probability of rainfall to exceed 150mm in most parts of the country during the forecast period.

GEFS Week-2 Exceedance Prob. > 200mm  
Valid: 20221121 - 20221127



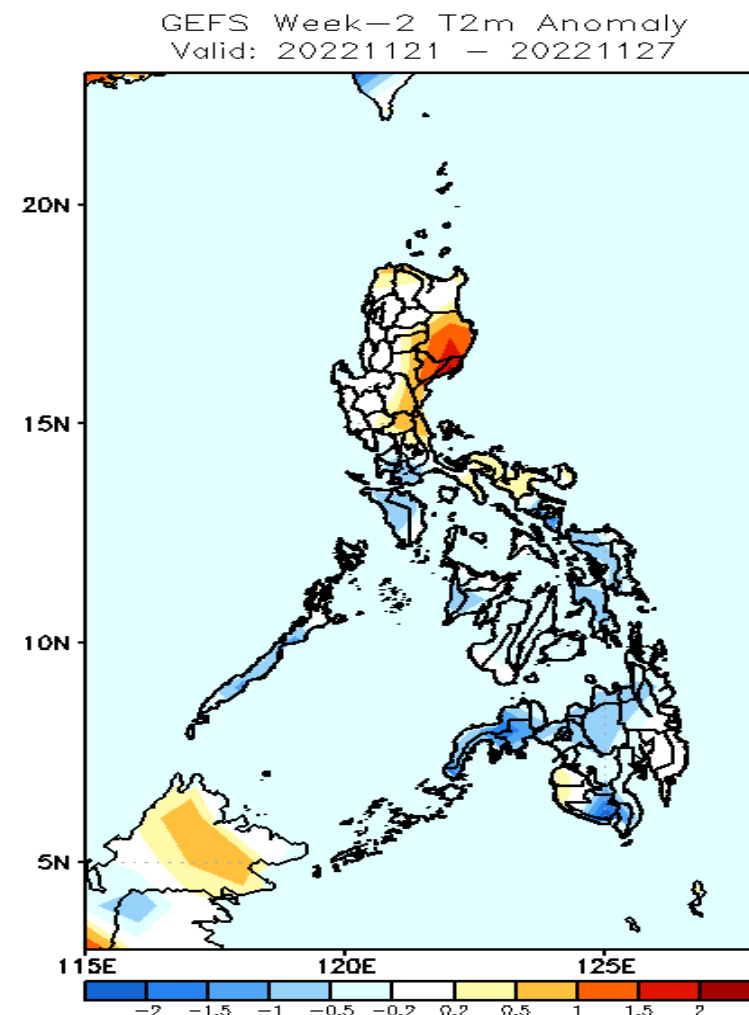
Low probability of rainfall to exceed 200mm in most parts of the country during the forecast period.

# GEFS Week-1 & 2 Forecasts: T2m Anomaly



## 2m Temperature Week 1: Nov 14-20, 2022

Near to slightly warmer than average surface air temperature will likely experience in most parts of the country except in Isabela and Maguindanao (warmer) and Cebu, Negros island and southern Mindanao (cooler) during the forecast period.



## 2m Temperature Week 2: Nov 21-27, 2022

Near to cooler than average surface air temperature will likely experience in most parts of the country except in Isabela, Quirino, Aurora, Nueva Ecija and Bulacan where slightly warmer to warmer than average surface air temperature is expected during the forecast period.