



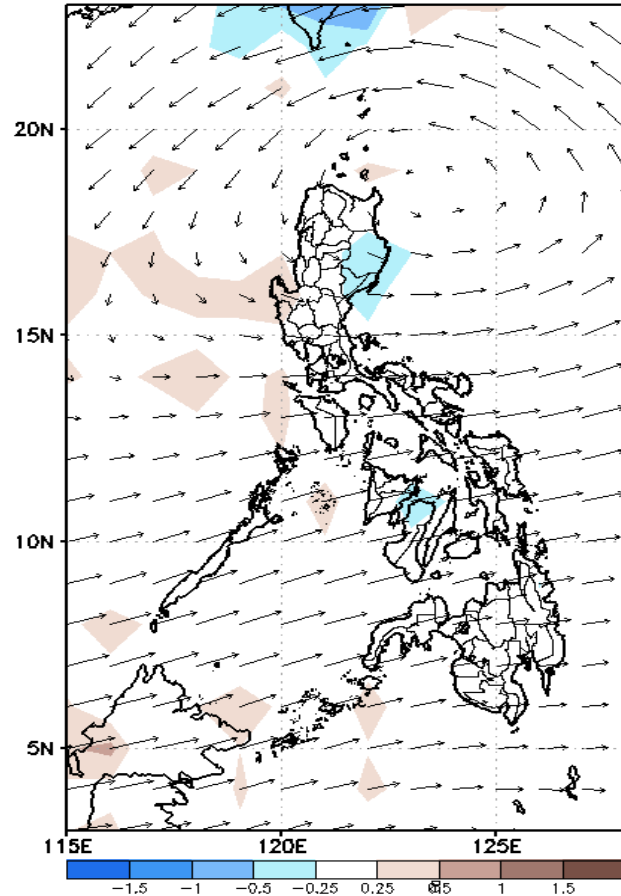
# Week 1 & Week 2 Forecast for the Philippines using GEFS Model



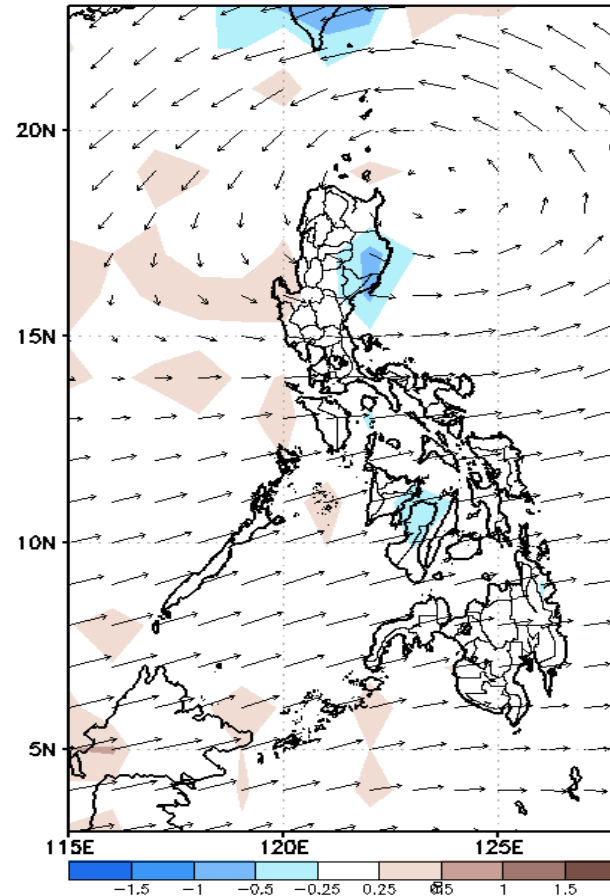
# GEFS Week-1 Forecasts: Wind Anomaly Forecast

Week 1: Oct 14- 20, 2022

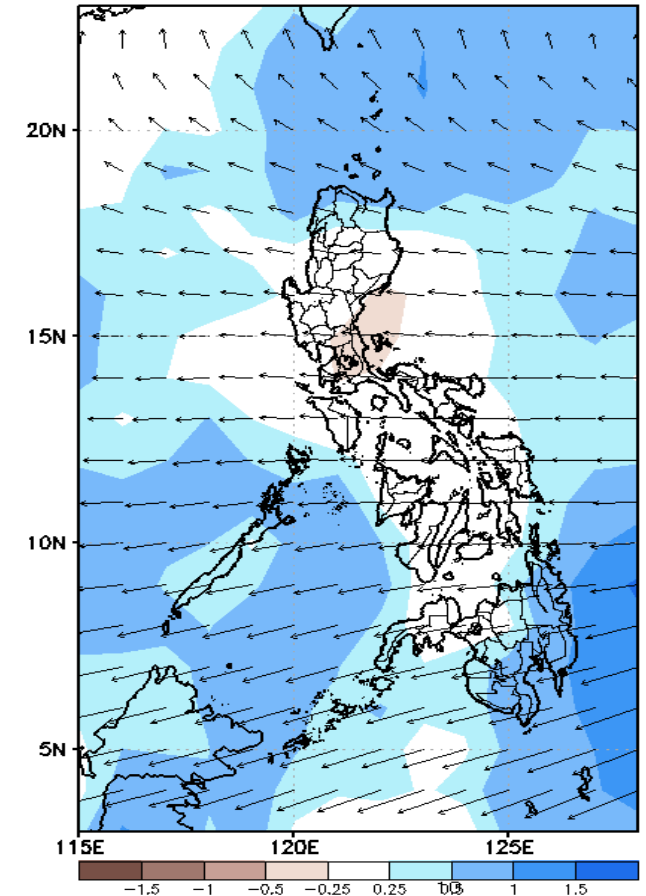
GEFS Week-1 850-hPa Divergence and Wind Anom  
Valid: 20221014 - 20221020



GEFS Week-1 700-hPa Divergence and Wind Anom  
Valid: 20221014 - 20221020



GEFS Week-1 200-hPa Divergence and Wind Anom  
Valid: 20221014 - 20221020

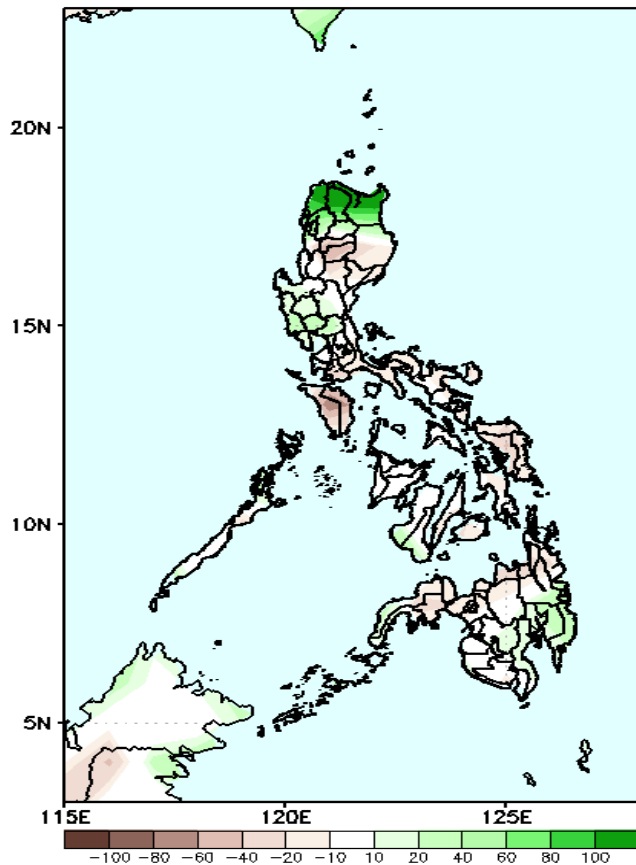


A cyclonic wind circulation will likely affect Northern Luzon – Extreme Northern Luzon area. Westerly affecting the rest of the country during the forecast period.

# Precipitation Anomaly and Exceedance Probability > 25/50 mm

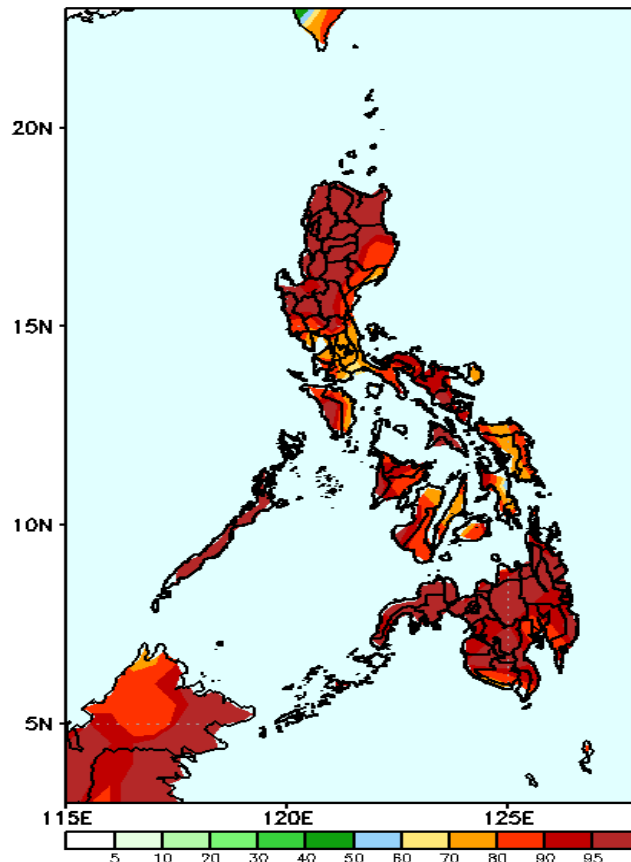
Week 1: Oct 14- 20, 2022

GEFS Week-1 Precip Anomaly  
Valid: 20221014 - 20221020



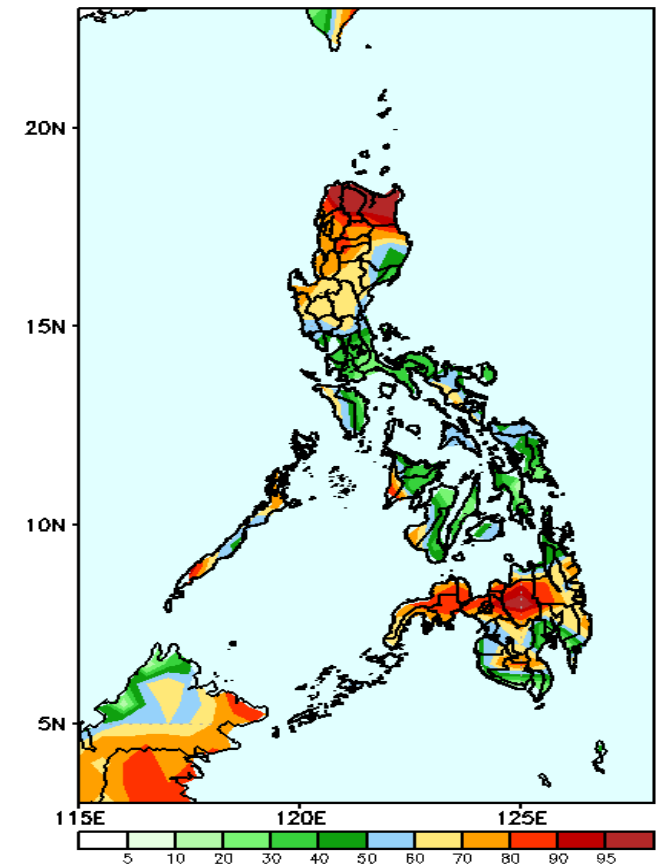
Increase of rainfall of more than 100mm is expected in Ilocos Norte, Apayao and Cagayan, 10-40mm in some areas in Central Luzon and Davao Region while 20-70mm rainfall deficit for the rest of the country during the forecast period .

GEFS Week-1 Exceedance Prob. > 25mm  
Valid: 20221014 - 20221020



High probability of rainfall to exceed 25mm in most parts of the country during the forecast period.

GEFS Week-1 Exceedance Prob. > 50mm  
Valid: 20221014 - 20221020

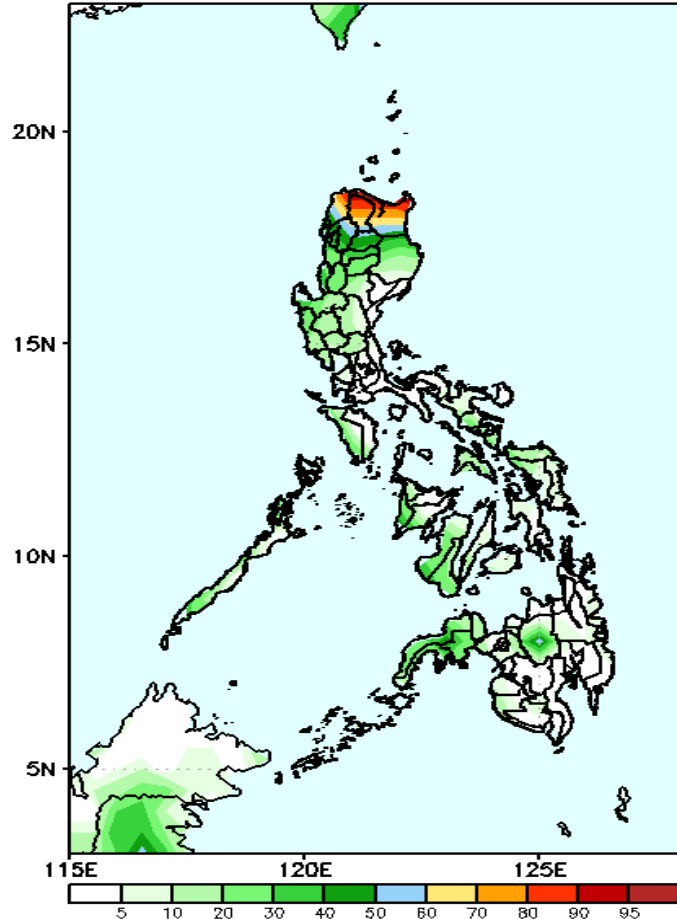


High probability of rainfall to exceed 50mm in most parts of Northern and Central Luzon, Palawan, Antique, Zamboanga Peninsula and Northern Mindanao while 40-80% chance for the rest of the country during the forecast period.

# Exceedance Probability > 100/150/200 mm

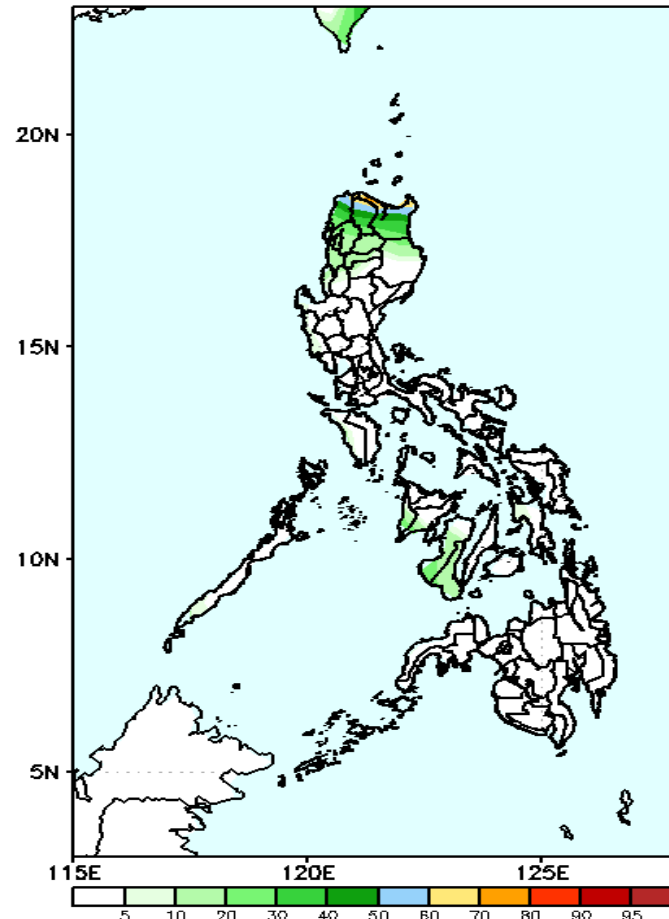
Week 1: Oct 14- 20, 2022

GEFS Week-1 Exceedance Prob. > 100mm  
Valid: 20221014 - 20221020



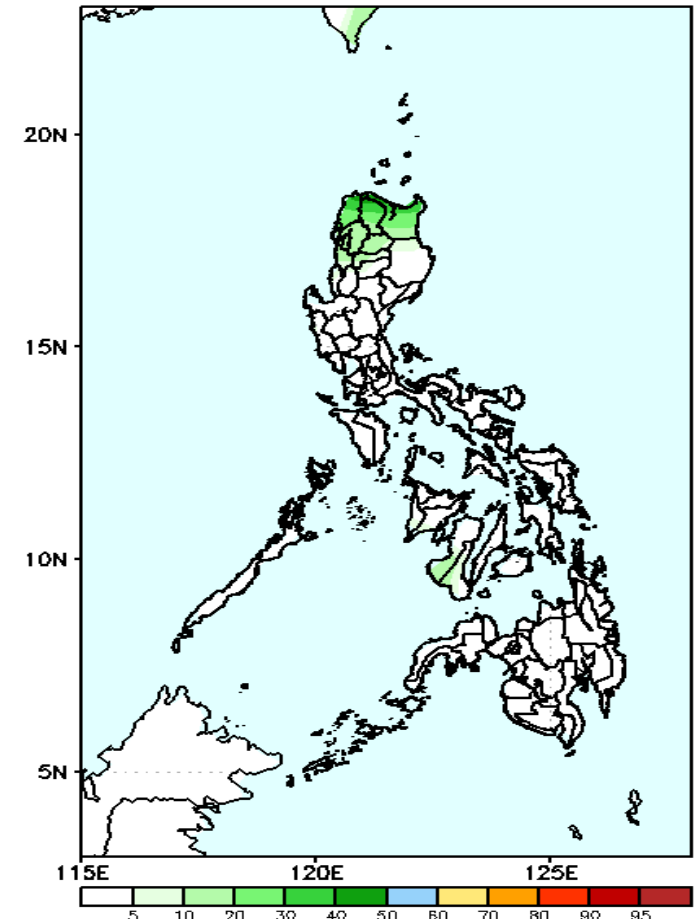
Low probability of rainfall to exceed 100mm in most parts of the country except in Ilocos Norte, Apayao and Cagayan where there is 60-95% chance during the forecast period.

GEFS Week-1 Exceedance Prob. > 150mm  
Valid: 20221014 - 20221020



Low probability of rainfall to exceed 150mm in most parts of the country during the forecast period.

GEFS Week-1 Exceedance Prob. > 200mm  
Valid: 20221014 - 20221020

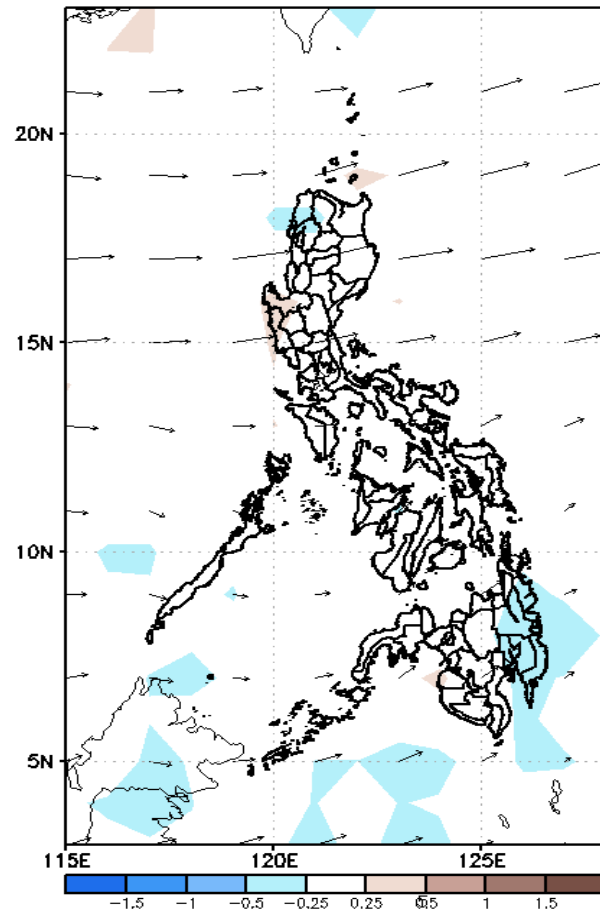


Low probability of rainfall to exceed 200mm in most parts of the country during the forecast period.

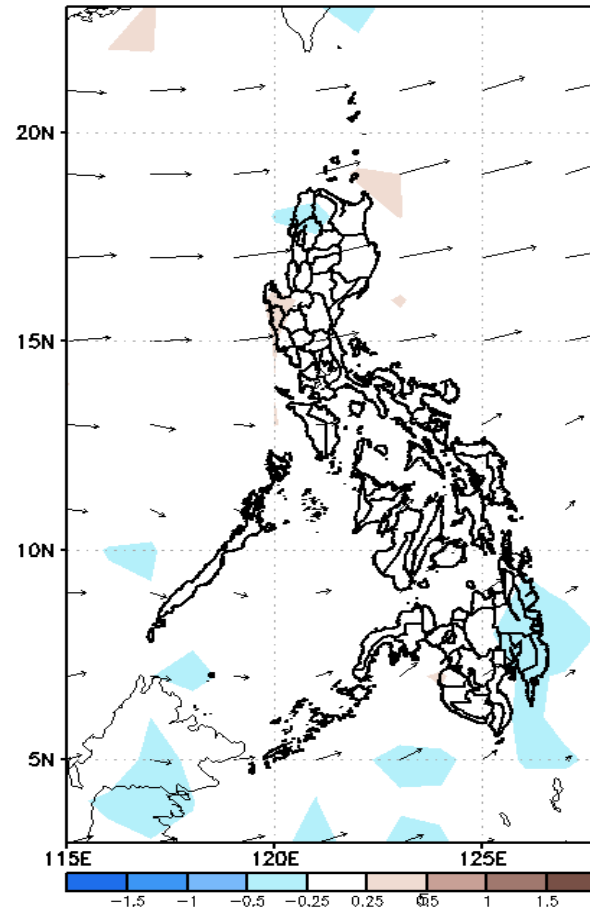
# GEFS Week-2 Forecasts: Wind Anomaly Forecast

Week 2: Oct 21-27, 2022

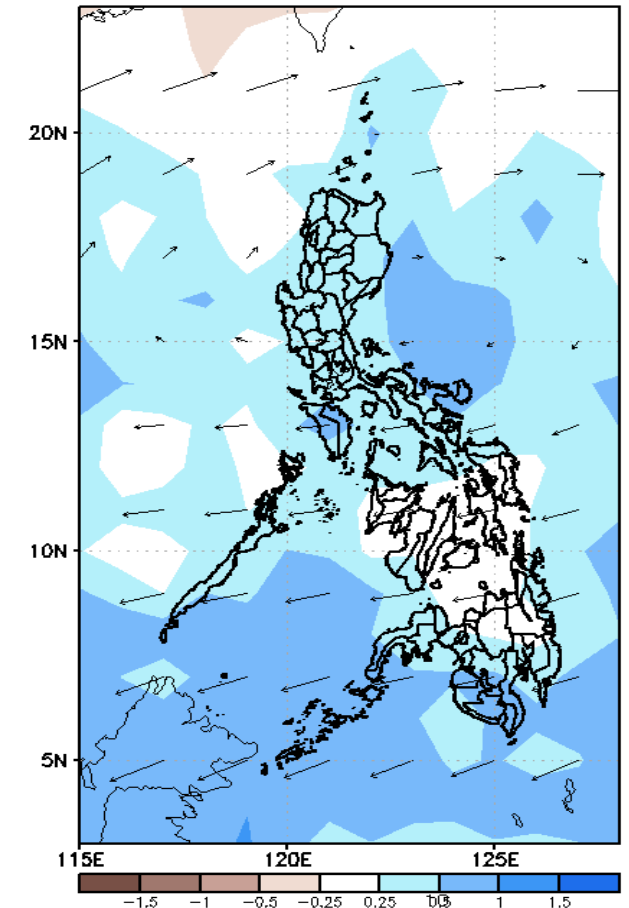
GEFS Week-2 850-hPa Divergence and Wind Anomaly  
Valid: 20221021 - 20221027



GEFS Week-2 700-hPa Divergence and Wind Anomaly  
Valid: 20221021 - 20221027



GEFS week-2 200-hPa Divergence and Wind Anomaly  
Valid: 20221021 - 20221027

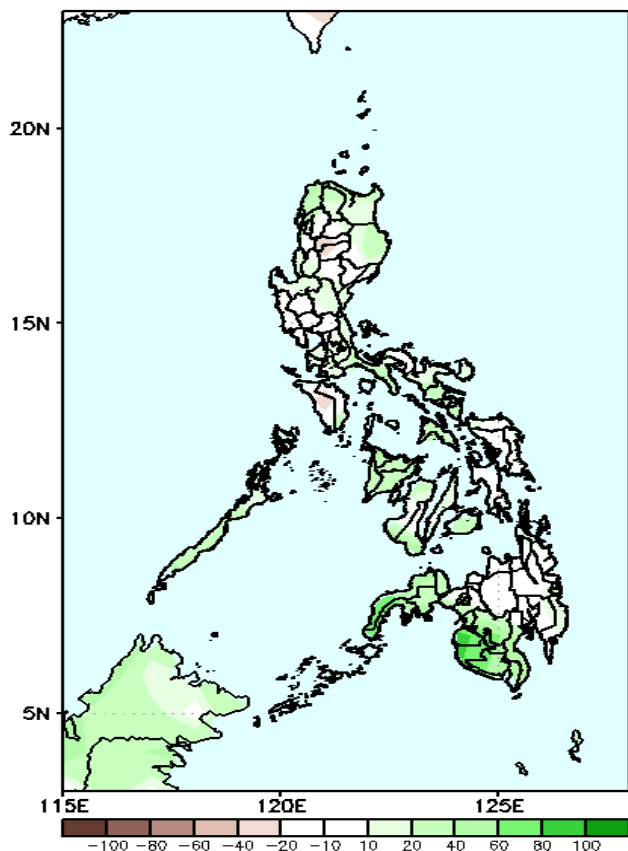


Westerly windflow affecting most parts of the country during the forecast period.

# Precipitation Anomaly and Exceedance Probability > 25/50 mm

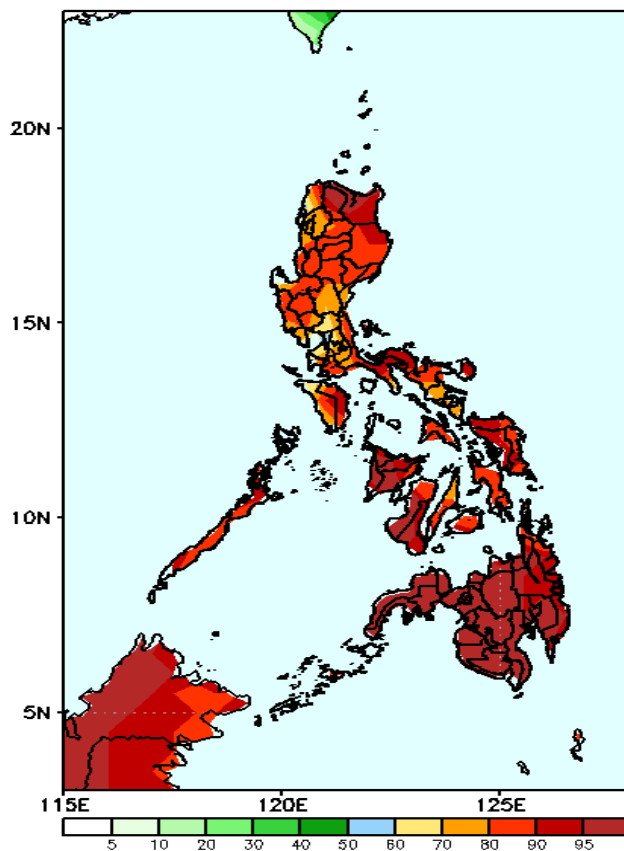
Week 2: Oct 21-27, 2022

GEFS Week-2 Precip. Anomaly  
Valid: 20221021 - 20221027



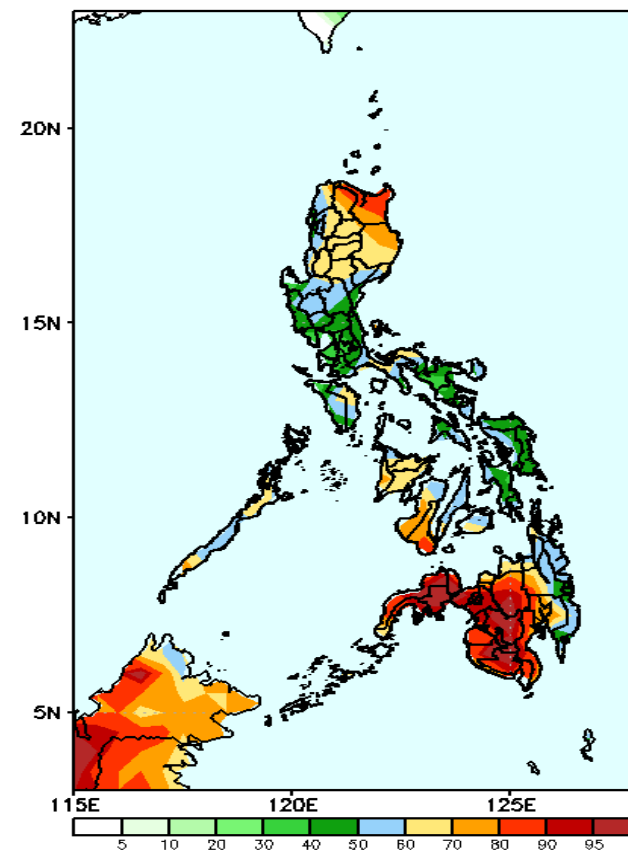
Rainfall deficit of 10-50mm is expected in most parts Luzon, Visayas and Bukidnon while 20-60mm increase of rainfall in most parts of Mindanao during the forecast period.

GEFS Week-2 Exceedance Prob. > 25mm  
Valid: 20221021 - 20221027



High probability of rainfall to exceed 25mm in most parts of the country during the forecast period.

GEFS Week-2 Exceedance Prob. > 50mm  
Valid: 20221021 - 20221027



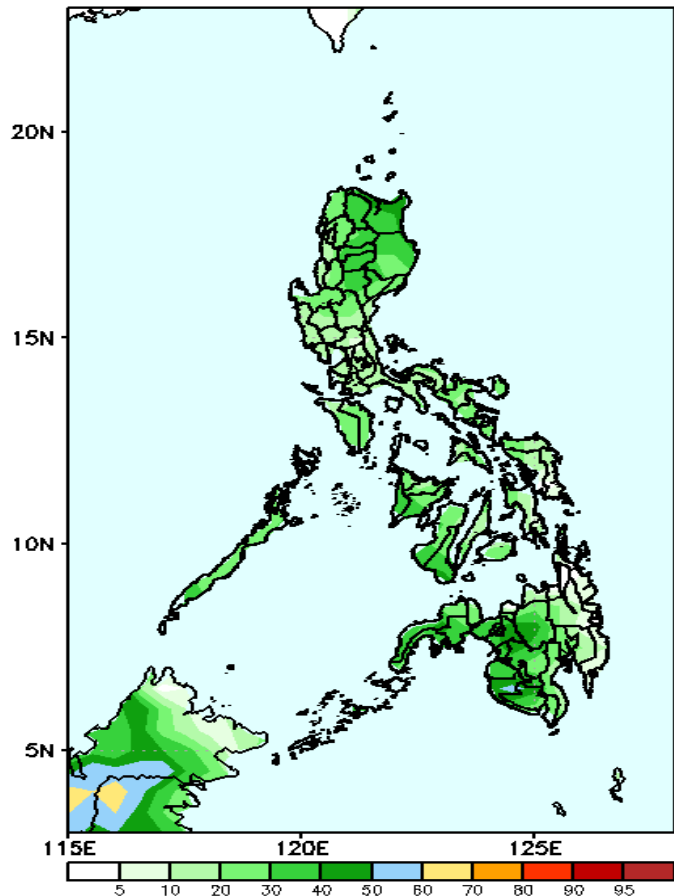
High probability of rainfall to exceed 50mm in most parts of Mindanao while 60-85% chance for the rest of the country during the forecast period.



# Exceedance Probability > 100/150/200 mm

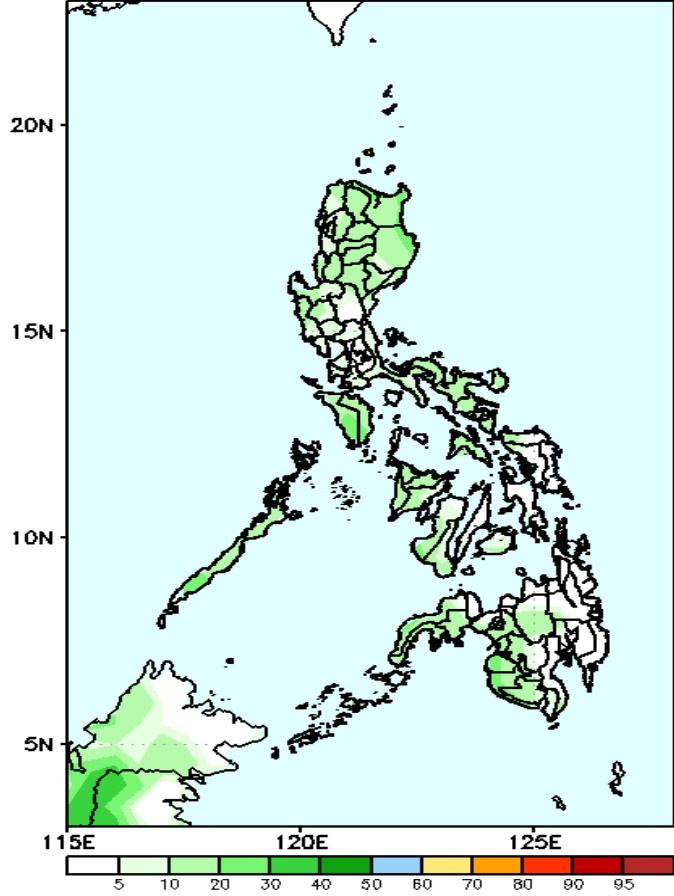
Week 2: Oct 21-27, 2022

GEFS Week-2 Exceedance Prob. > 100mm  
Valid: 20221021 – 20221027



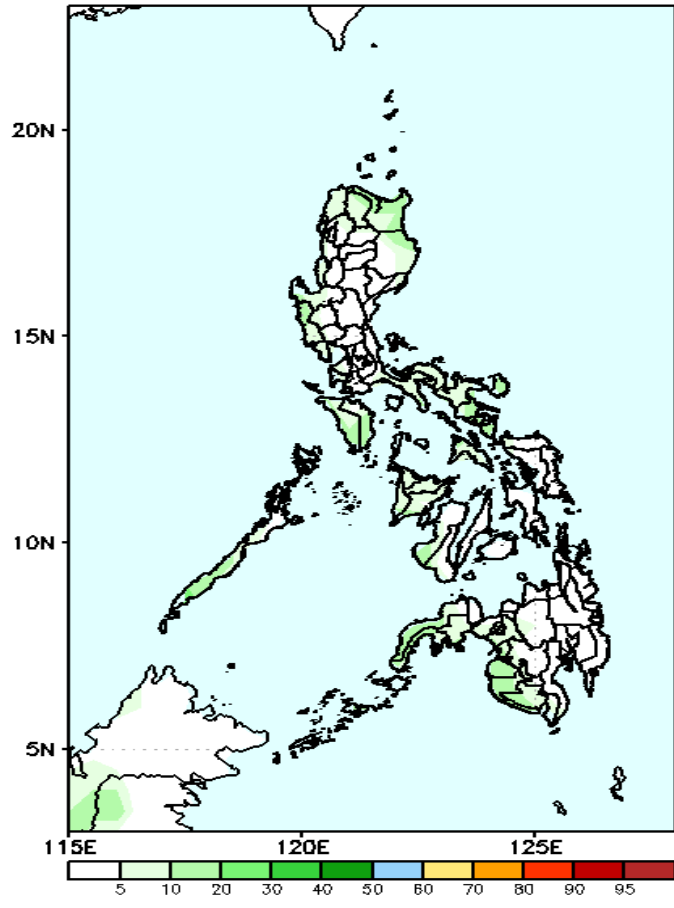
Low probability of rainfall to exceed 100mm in most parts of the country during the forecast period.

GEFS Week-2 Exceedance Prob. > 150mm  
Valid: 20221021 – 20221027



Low probability of rainfall to exceed 150mm in most parts of the country during the forecast period.

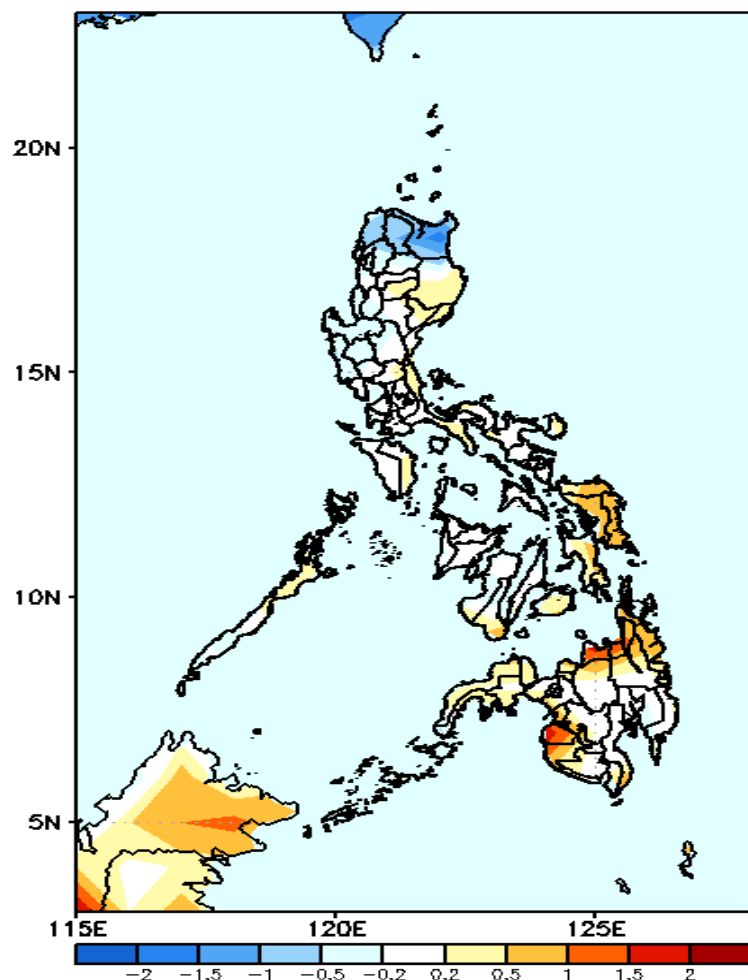
GEFS Week-2 Exceedance Prob. > 200mm  
Valid: 20221021 – 20221027



Low probability of rainfall to exceed 200mm in most parts of the country during the forecast period.

# GEFS Week-1 & 2 Forecasts: T2m Anomaly

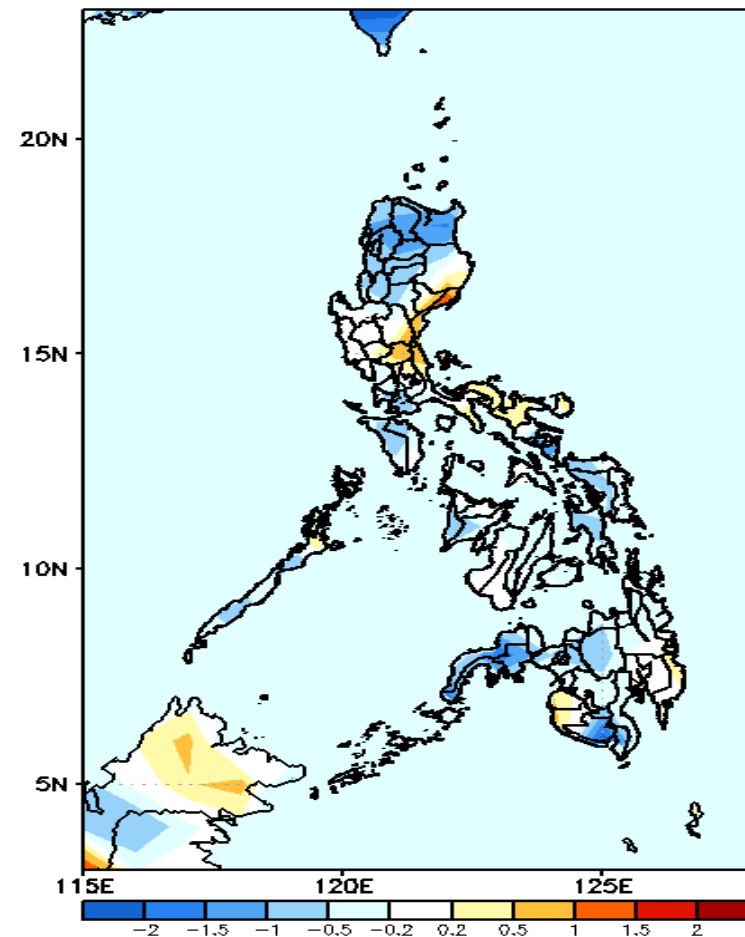
GEFS Week-1 T2m Anomaly  
Valid: 20221014 – 20221020



## 2m Temperature Week 1: Oct 14- 20, 2022

Near to warmer than average surface air temperature will likely experience in most parts of the country except in Ilocos Norte, Apayao and Cagayan where slightly cooler to cooler than average surface air temperature will be likely during the forecast period.

GEFS Week-2 T2m Anomaly  
Valid: 20221021 – 20221027



## 2m Temperature Week 2: Oct 21-27, 2022

Slightly cooler to cooler than average surface air temperature will likely experience in most parts of the country except in some areas in eastern Luzon, Maguindanao and Sultan Kudarat where slightly warmer to warmer than average surface air temperature will be likely during the forecast period.