



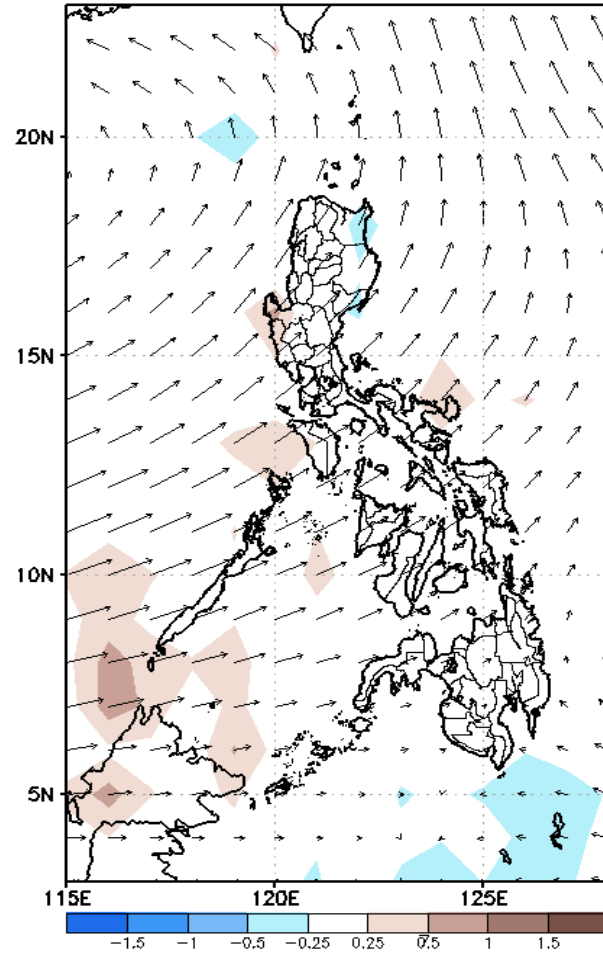
# Week 1 & Week 2 Forecast for the Philippines using GEFS Model



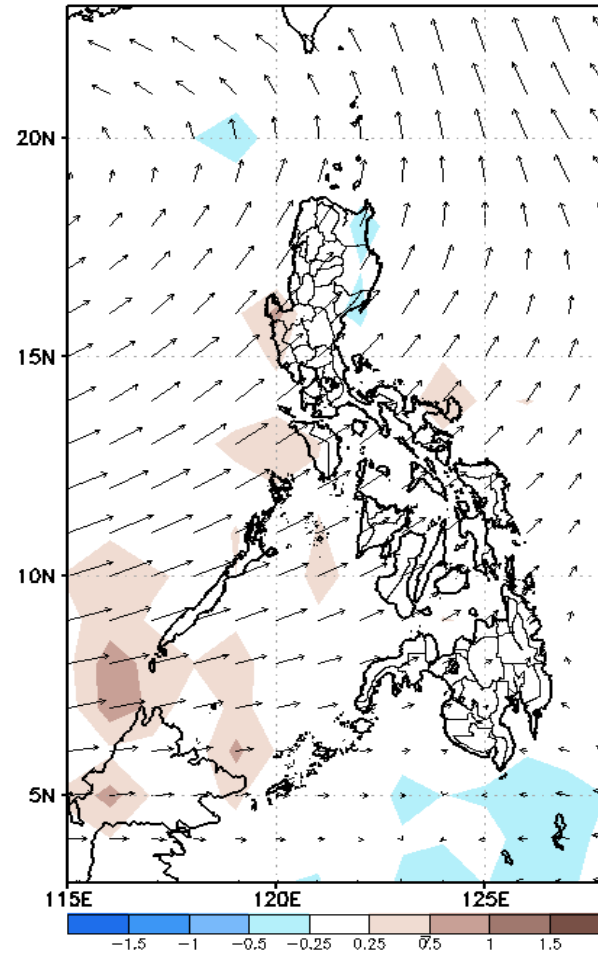
# GEFS Week-1 Forecasts: Wind Anomaly Forecast

Week 1: Aug 15-21, 2022

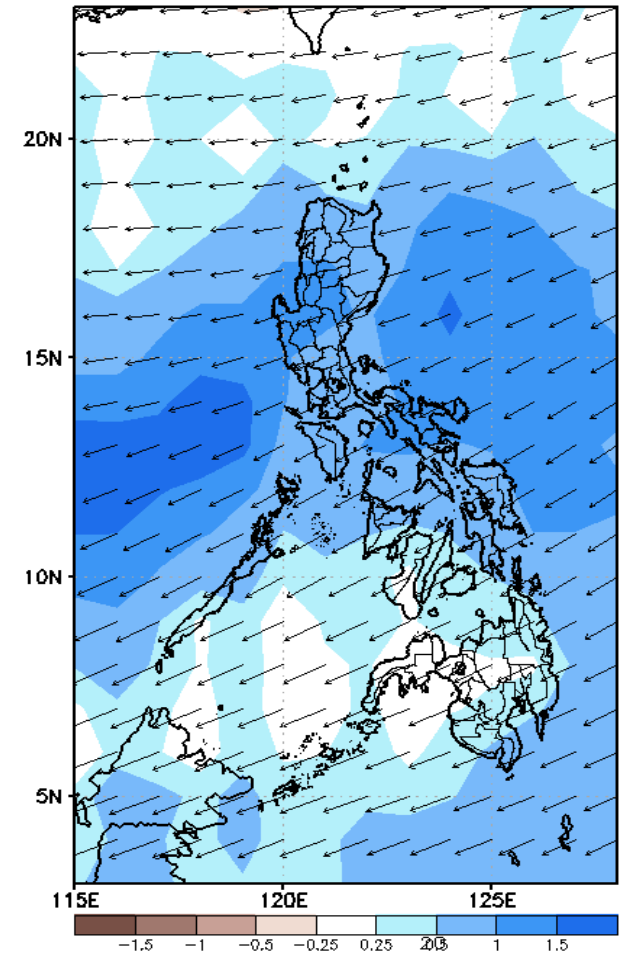
GEFS Week-1 850-hPa Divergence and Wind Anom  
Valid: 20220815 - 20220821



GEFS Week-1 700-hPa Divergence and Wind Anom  
Valid: 20220815 - 20220821



GEFS Week-1 200-hPa Divergence and Wind Anom  
Valid: 20220815 - 20220821

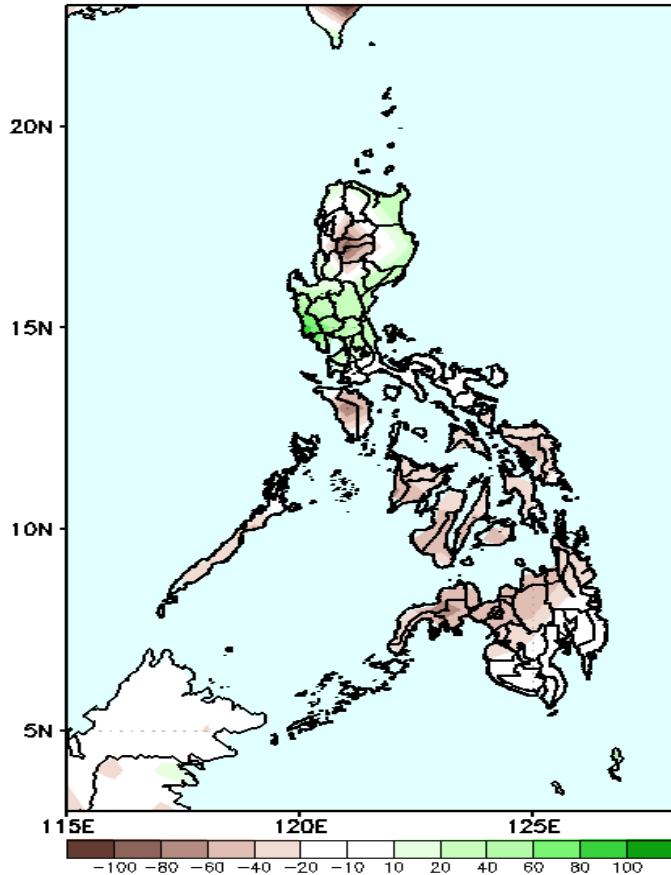


Southwest Monsoon affecting most parts of the country during the forecast period.

# Precipitation Anomaly and Exceedance Probability > 25/50 mm

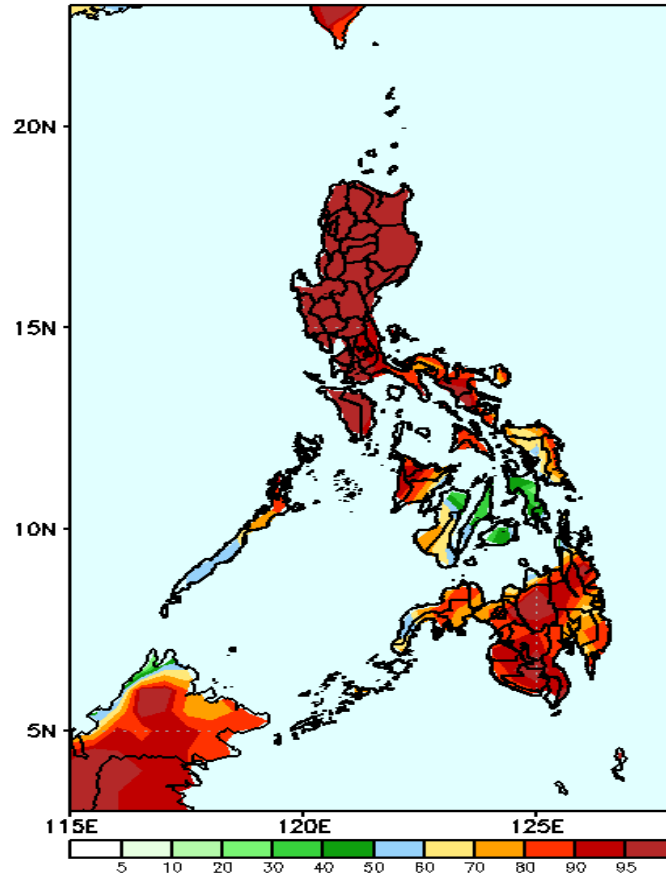
Week 1: Aug 15-21, 2022

GEFS Week-1 Precip Anomaly  
Valid: 20220815 - 20220821



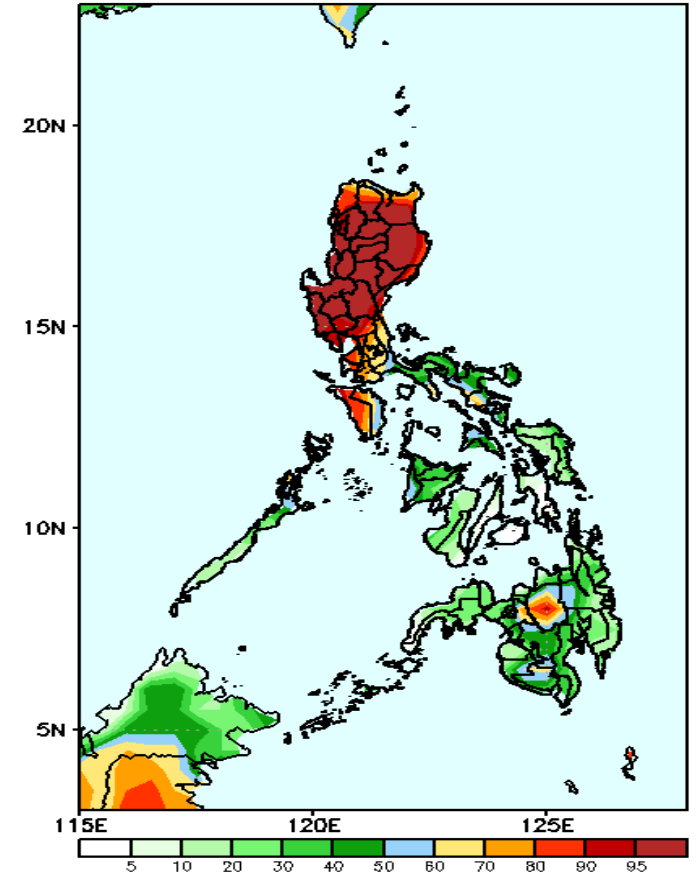
Rainfall deficit of 40-90mm is expected in most parts of the country except in Cagayan valley and Central Luzon where 40-90mm increase of rainfall is forecasted during the forecast period.

GEFS Week-1 Exceedance Prob. > 25mm  
Valid: 20220815 - 20220821



High probability of rainfall to exceed 25mm in most parts of the country during the forecast period.

GEFS Week-1 Exceedance Prob. > 50mm  
Valid: 20220815 - 20220821

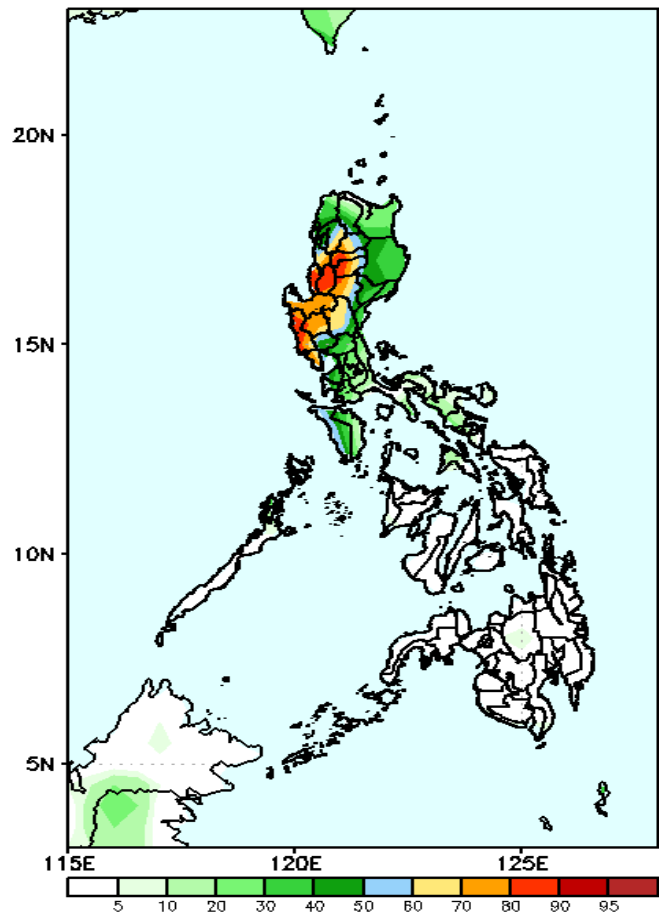


High probability of rainfall to exceed 50mm in most parts of Luzon and Bukidnon while less chance in Bicol Region and most parts of Visayas and Mindanao during the forecast period.

# Exceedance Probability > 100/150/200 mm

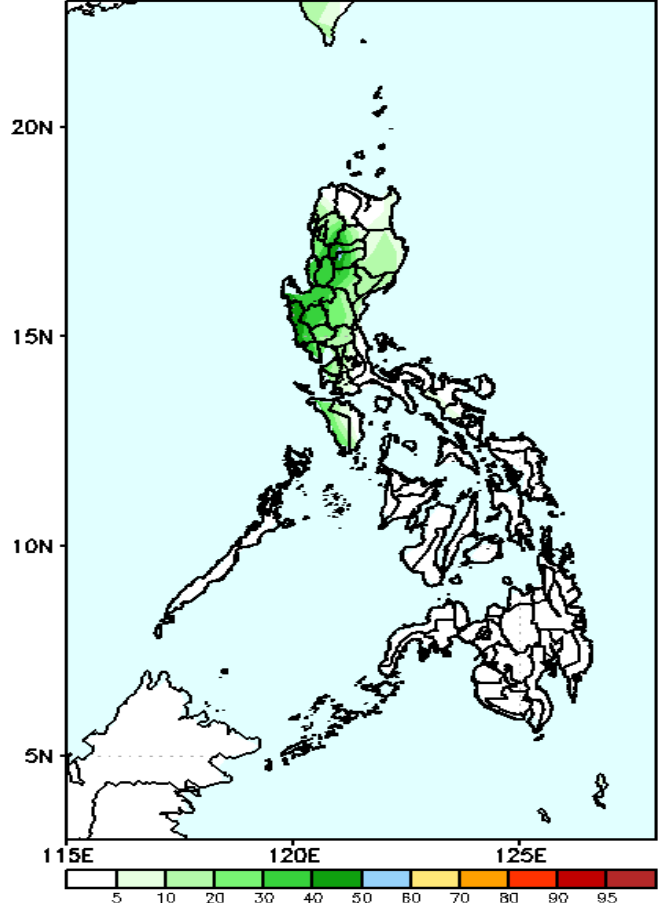
Week 1: Aug 15-21, 2022

GEFS Week-1 Exceedance Prob. > 100mm  
Valid: 20220815 – 20220821



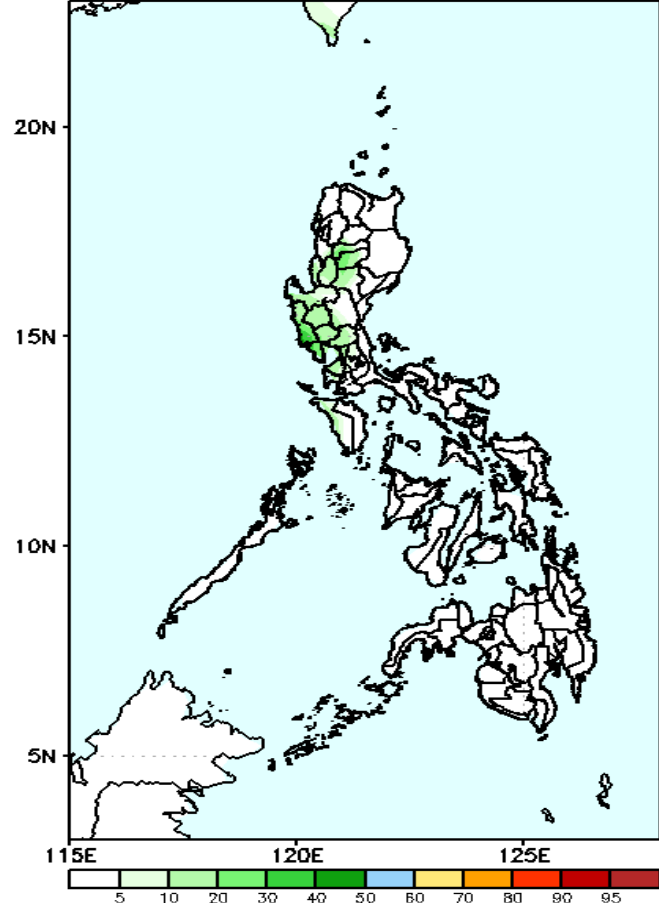
High probability of rainfall to exceed 100mm in most parts of Ilocos Region, CAR and Central Luzon while less likely for the rest of the country during the forecast period.

GEFS Week-1 Exceedance Prob. > 150mm  
Valid: 20220815 – 20220821



Low probability of rainfall to exceed 150mm in most parts of the country during the forecast period.

GEFS Week-1 Exceedance Prob. > 200mm  
Valid: 20220815 – 20220821

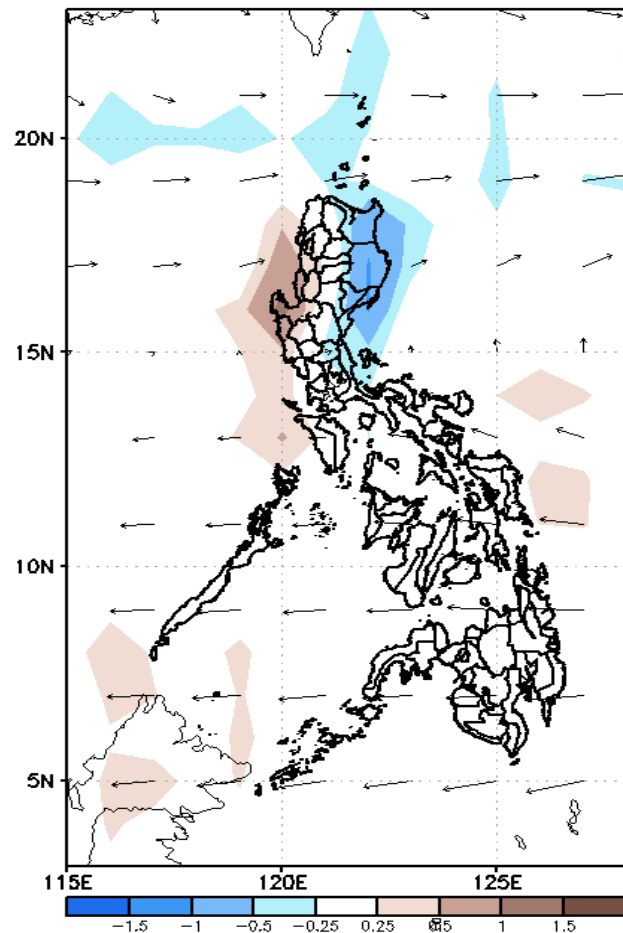


Low probability of rainfall to exceed 200mm in most parts of the country during the forecast period.

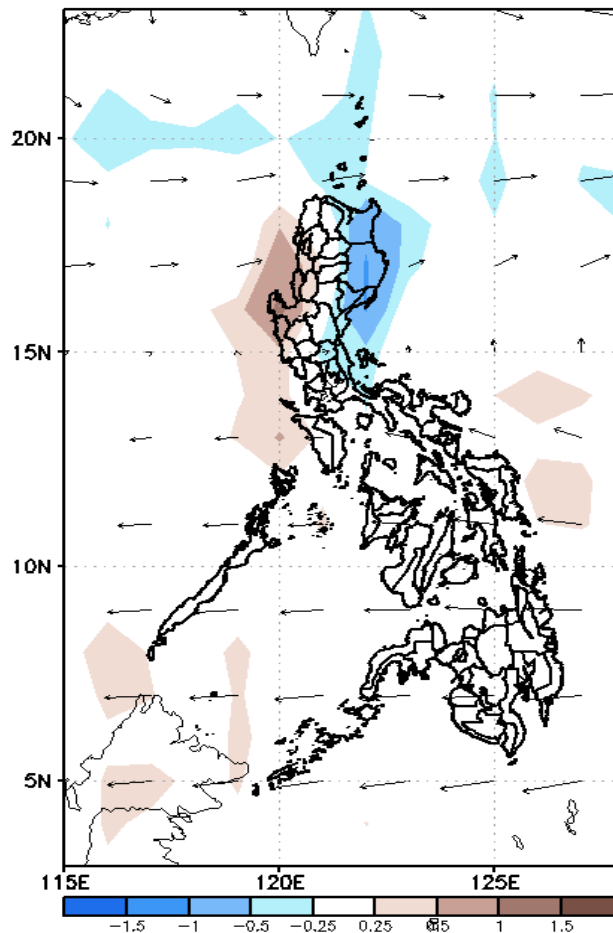
# GEFS Week-2 Forecasts: Wind Anomaly Forecast

Week 2: Aug 22-28, 2022

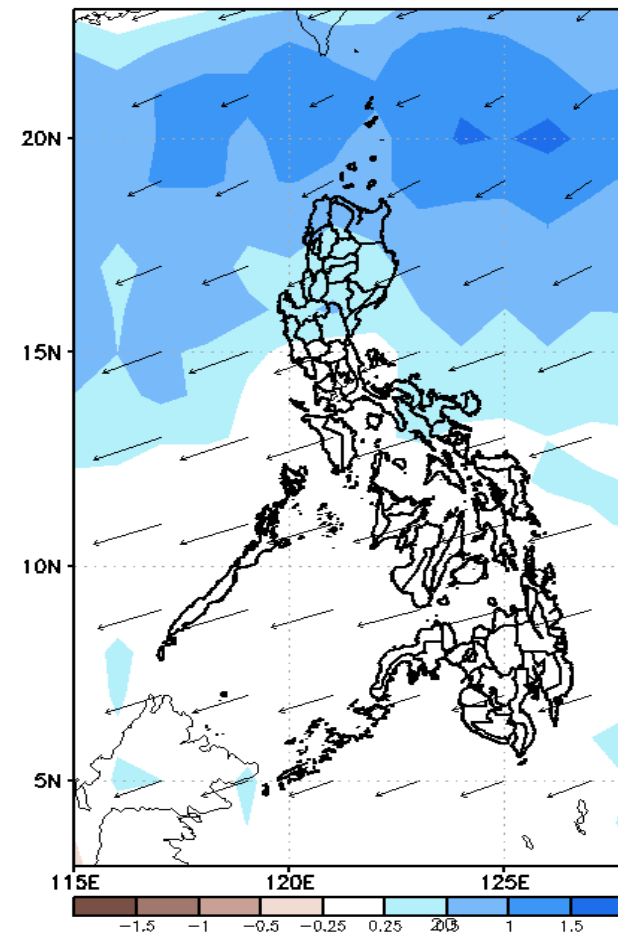
GEFS Week-2 850-hPa Divergence and Wind Anom  
Valid: 20220822 - 20220828



GEFS Week-2 700-hPa Divergence and Wind Anom  
Valid: 20220822 - 20220828



GEFS week-2 200-hPa Divergence and Wind Anom  
Valid: 20220822 - 20220828



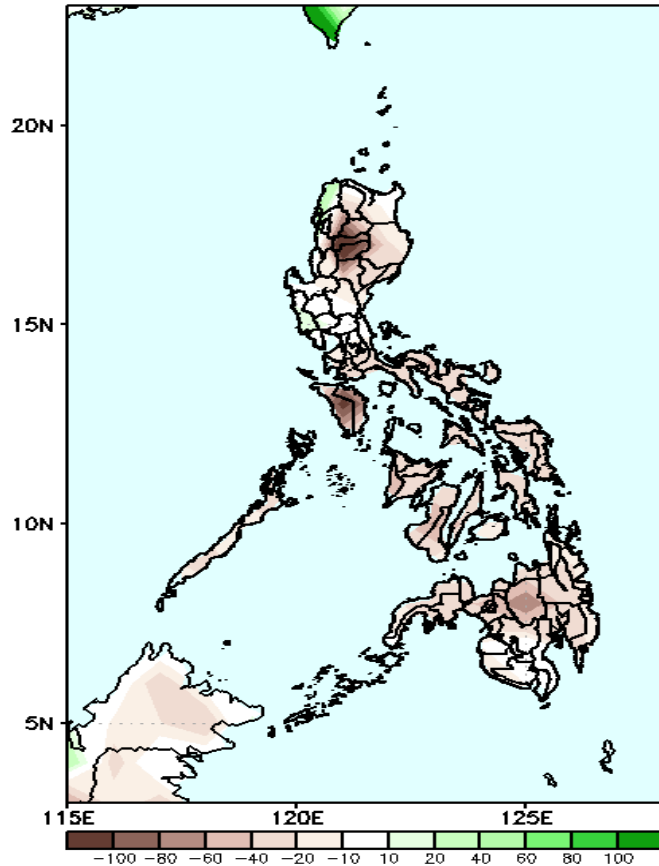
Southwest Monsoon affecting Northern and Extreme Northern Luzon while Easterlies affecting the rest of the country during the forecast period.



# Precipitation Anomaly and Exceedance Probability > 25/50 mm

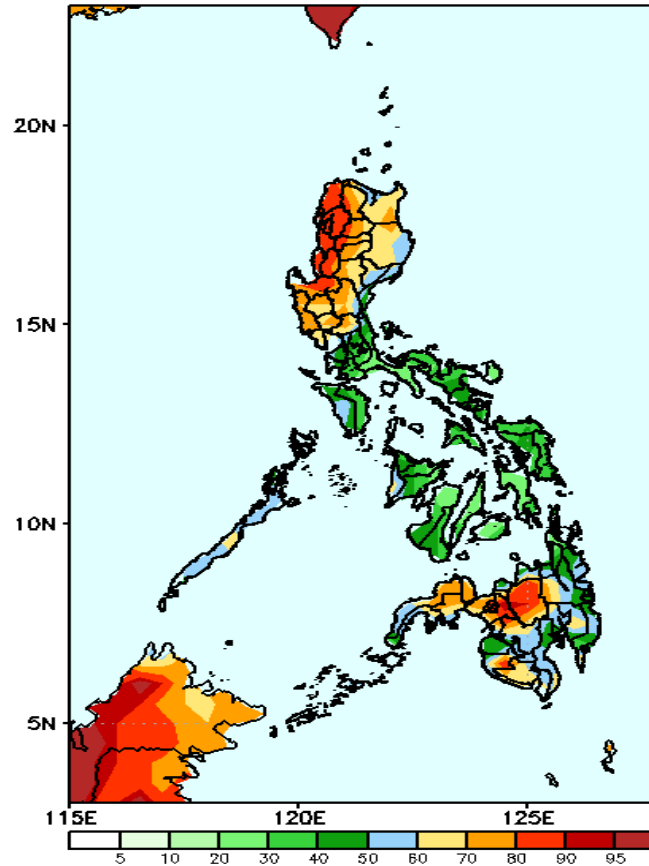
Week 2: Aug 22-28, 2022

GEFS Week-2 Precip Anomaly  
Valid: 20220822 - 20220828



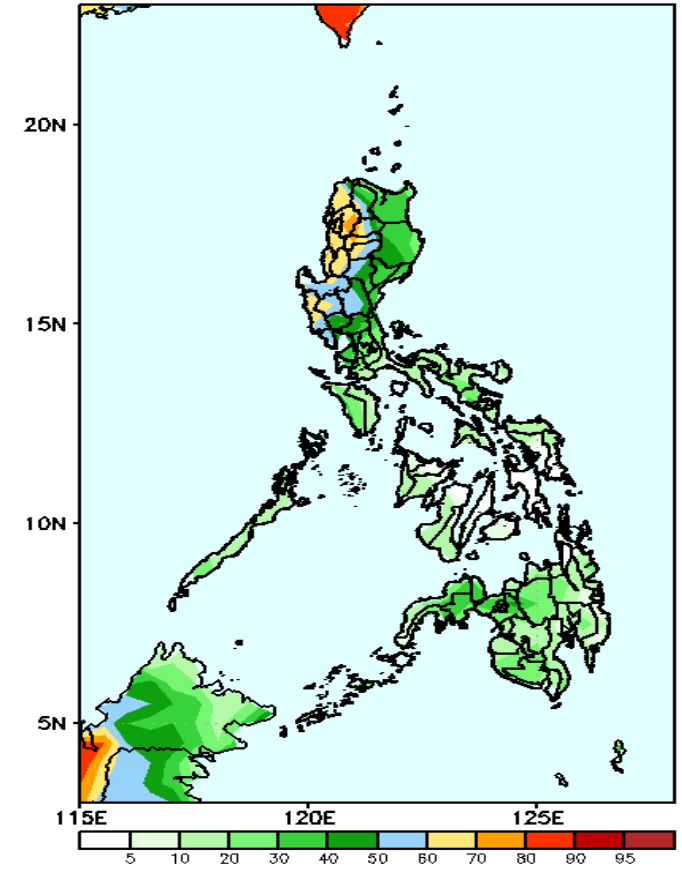
Rainfall deficit of up to 100mm is expected in Kalinga, Mt. Province, Ifugao and Mindoro and 20-60mm for the rest of the country during the forecast period.

GEFS Week-2 Exceedance Prob. > 25mm  
Valid: 20220822 - 20220828



High probability of rainfall to exceed 25mm in most parts of Luzon and western Mindanao (including Bukidnon) while less likely in Southern Luzon, Bicol Region, most parts of Visayas and eastern Mindanao during the forecast period.

GEFS Week-2 Exceedance Prob. > 50mm  
Valid: 20220822 - 20220828

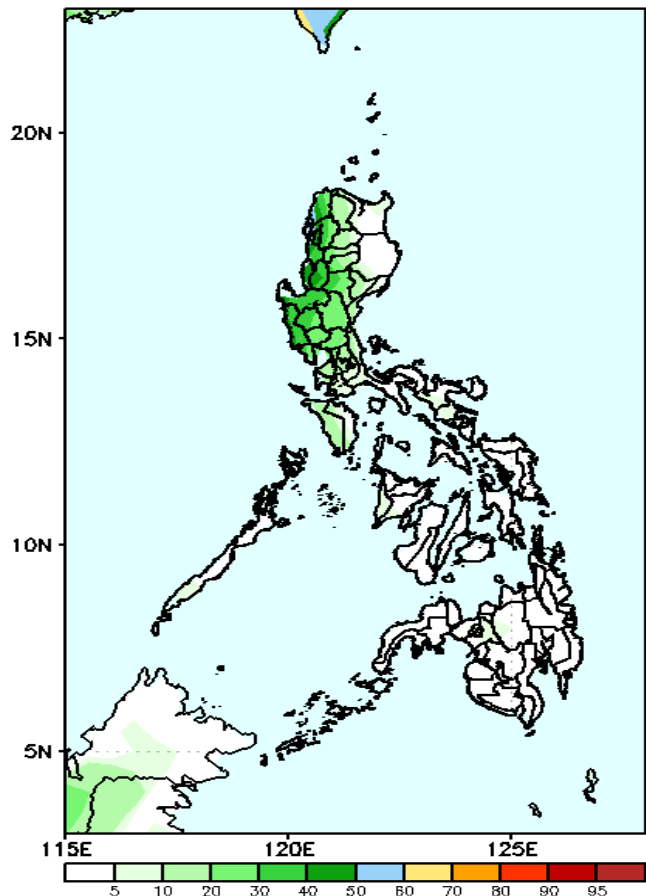


50-80% probability of rainfall to exceed 50mm in Ilocos & Cordillera Region and Central Luzon while less likely for the rest of the country during the forecast period.

# Exceedance Probability > 100/150/200 mm

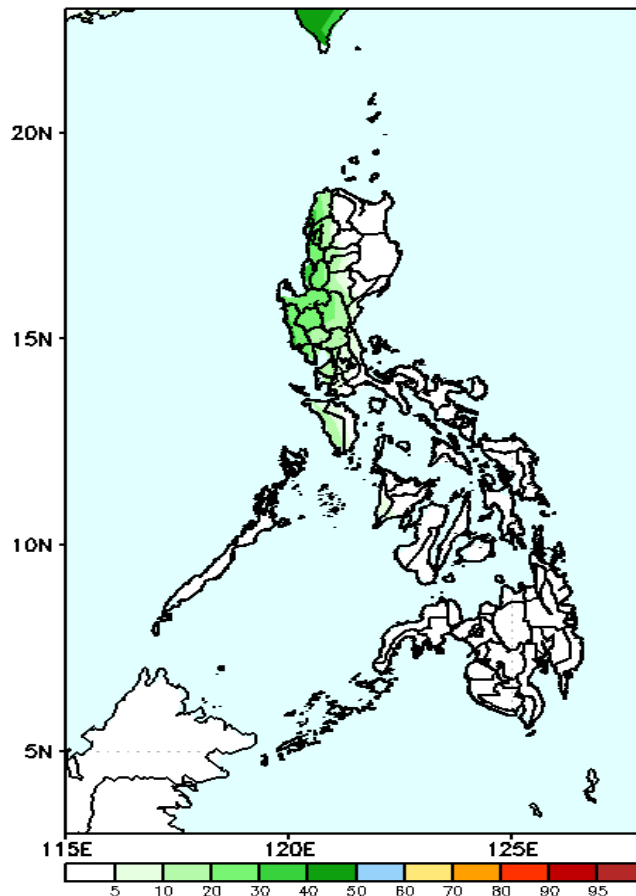
Week 2: Aug 22-28, 2022

GEFS Week-2 Exceedance Prob. > 100mm  
Valid: 20220822 – 20220828



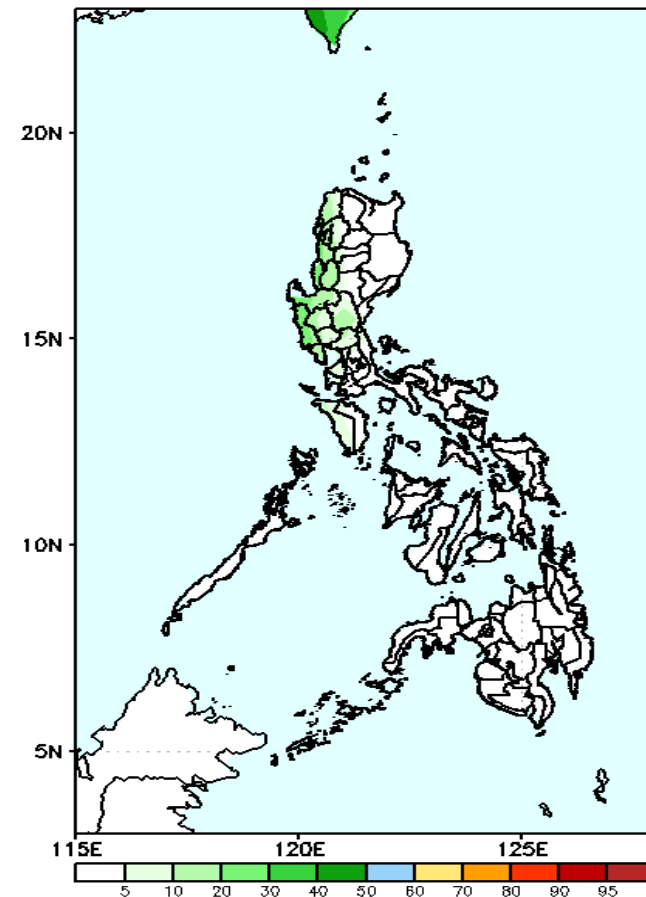
Low probability of rainfall to exceed 100mm in most parts of the country during the forecast period.

GEFS Week-2 Exceedance Prob. > 150mm  
Valid: 20220822 – 20220828



Low probability of rainfall to exceed 150mm in most parts of the country during the forecast period.

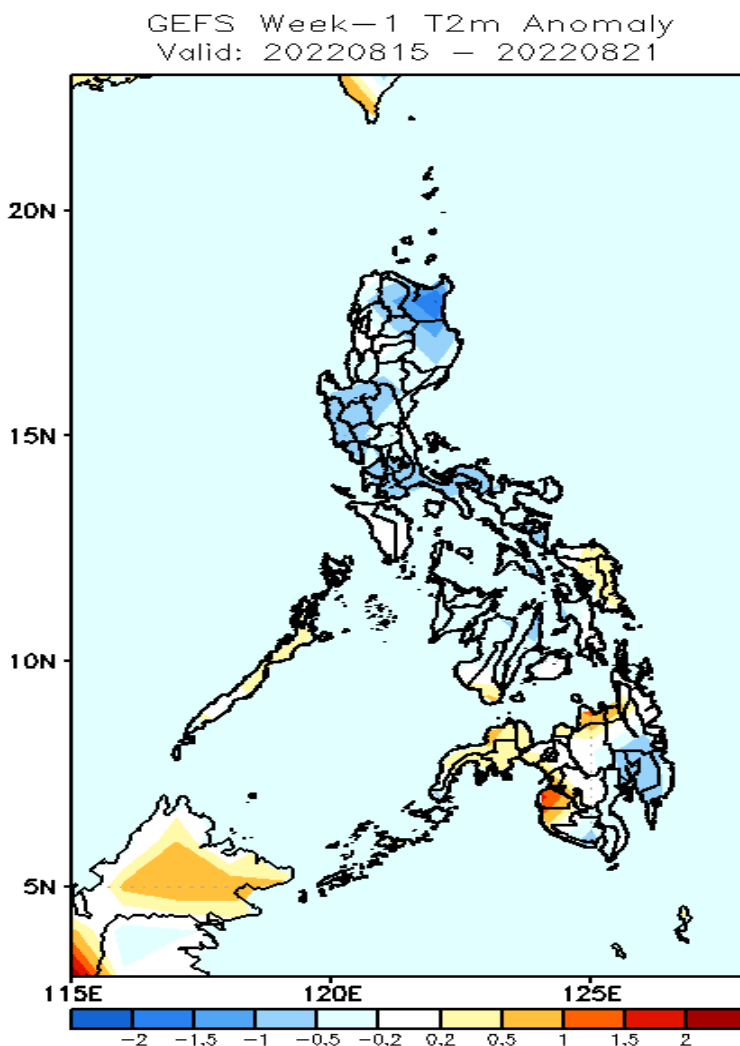
GEFS Week-2 Exceedance Prob. > 200mm  
Valid: 20220822 – 20220828



Low probability of rainfall to exceed 200mm in most parts of the country during the forecast period.

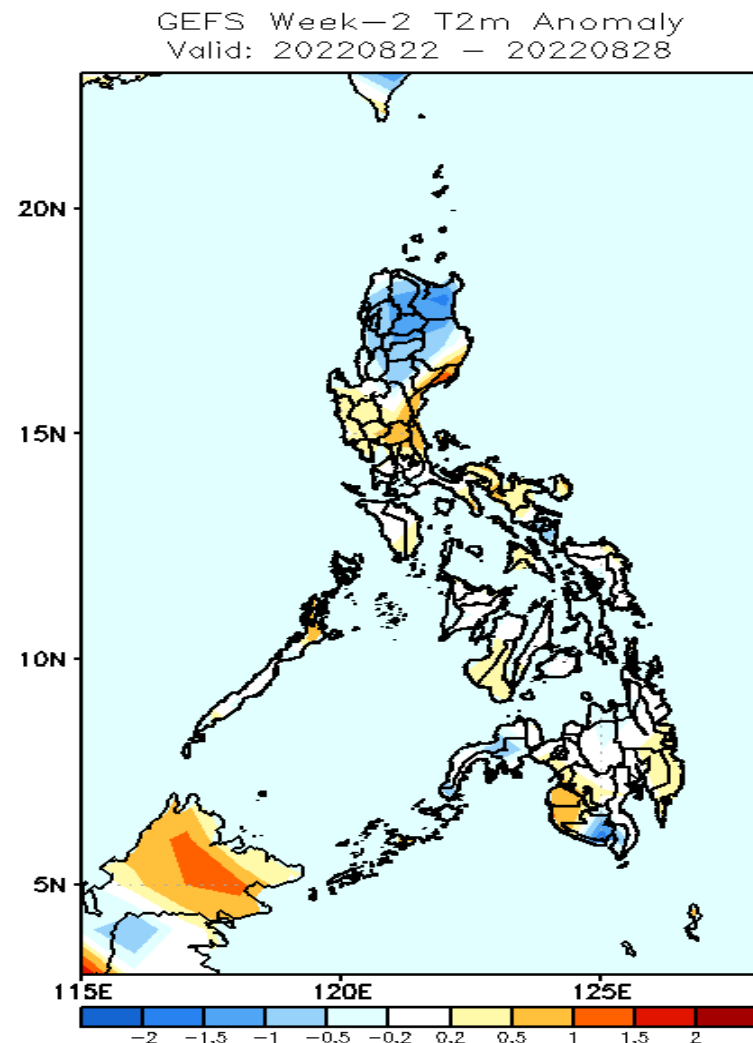


# GEFS Week-1 & 2 Forecasts: T2m Anomaly



## 2m Temperature Week 1: Aug 15-21, 2022

Near to cooler than average surface air temperature will likely experience in most parts of Luzon, Visayas and Davao Region while slightly warmer to warmer than average temperature in Palawan, Samar provinces and rest of Mindanao during the forecast period.



## 2m Temperature Week 2: Aug 22-28, 2022

Cooler than average surface air temperature will likely experience in most parts of northern Luzon and South Cotabato while near to warmer than average temperature for the rest of the country during the forecast period.