



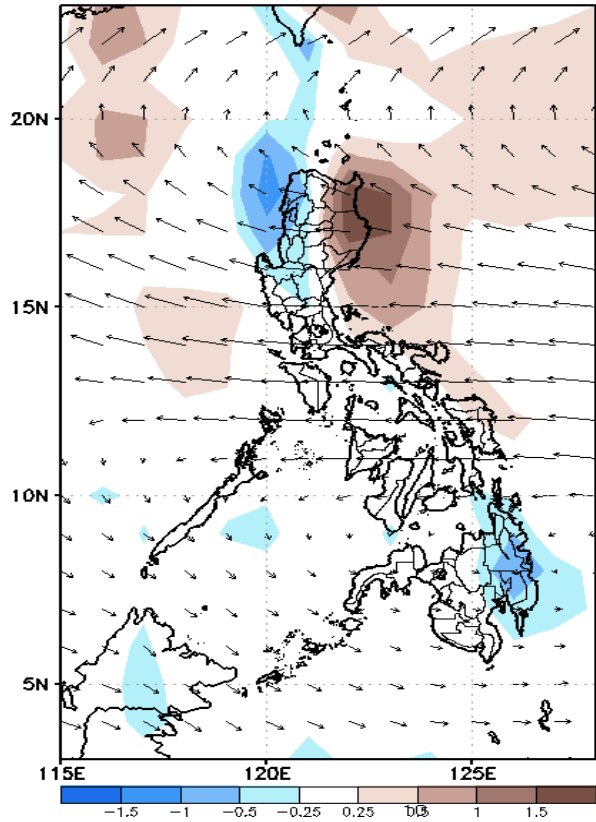
Week 1 & Week 2 Forecast for the Philippines using GEFS Model



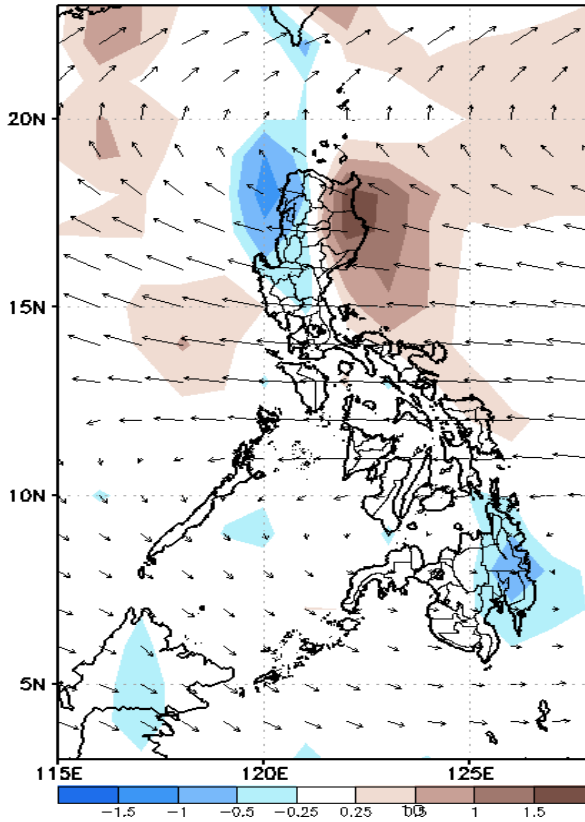
GEFS Week-1 Forecasts: Divergence & Wind Anomaly

Week 1: Dec 15-21, 2021

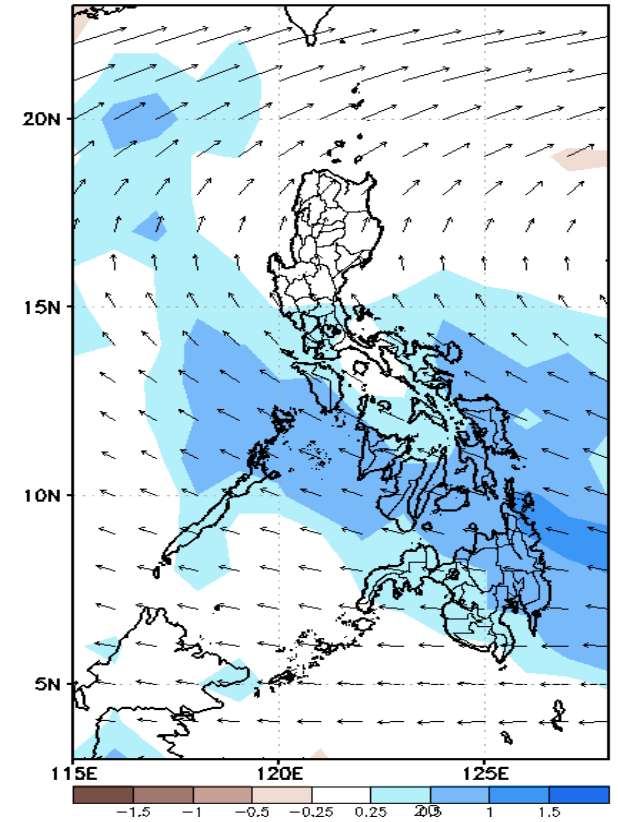
GEFS Week-1 850-hPa Divergence and Wind Anomaly
Valid: 20211215 - 20211221



GEFS Week-1 700-hPa Divergence and Wind Anomaly
Valid: 20211215 - 20211221



GEFS Week-1 200-hPa Divergence and Wind Anomaly
Valid: 20211215 - 20211221

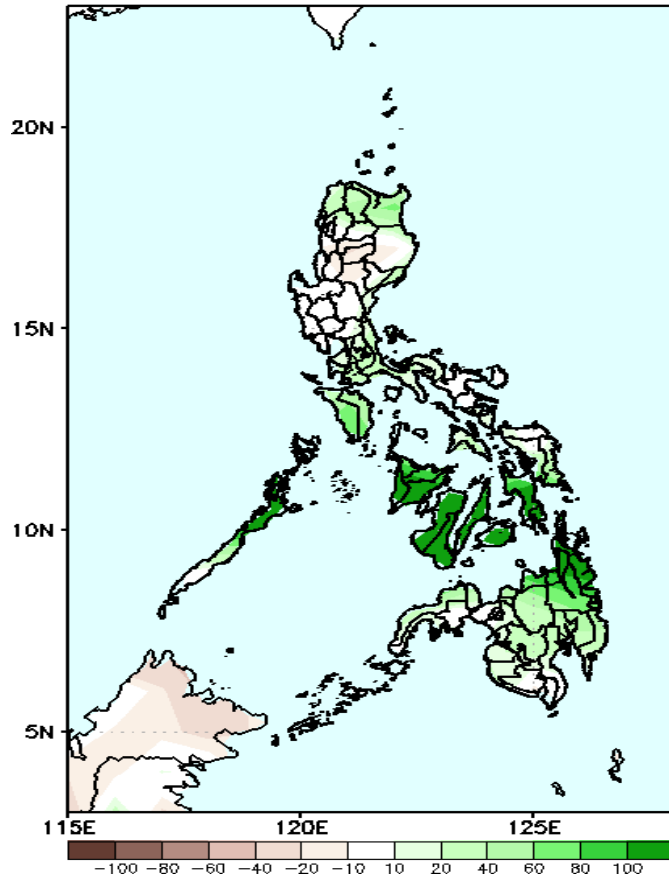


Upper and low level Divergence suggest likelihood of moderate to heavy precipitation in Southern Luzon and most parts of Visayas and Mindanao. Northeast Monsoon affecting the eastern sections of Luzon while Easterlies affecting the rest of the country during the forecast period.

Precipitation Anomaly and Exceedance Probability > 25/50 mm

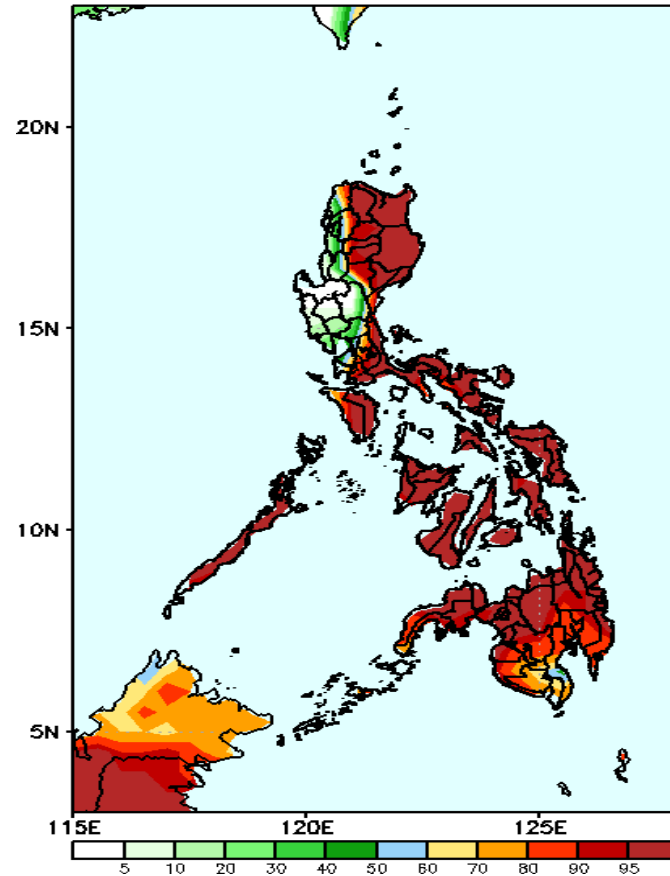
Week 1: Dec 15-21, 2021

GEFS Week-1 Precip Anomaly
Valid: 20211215 - 20211221



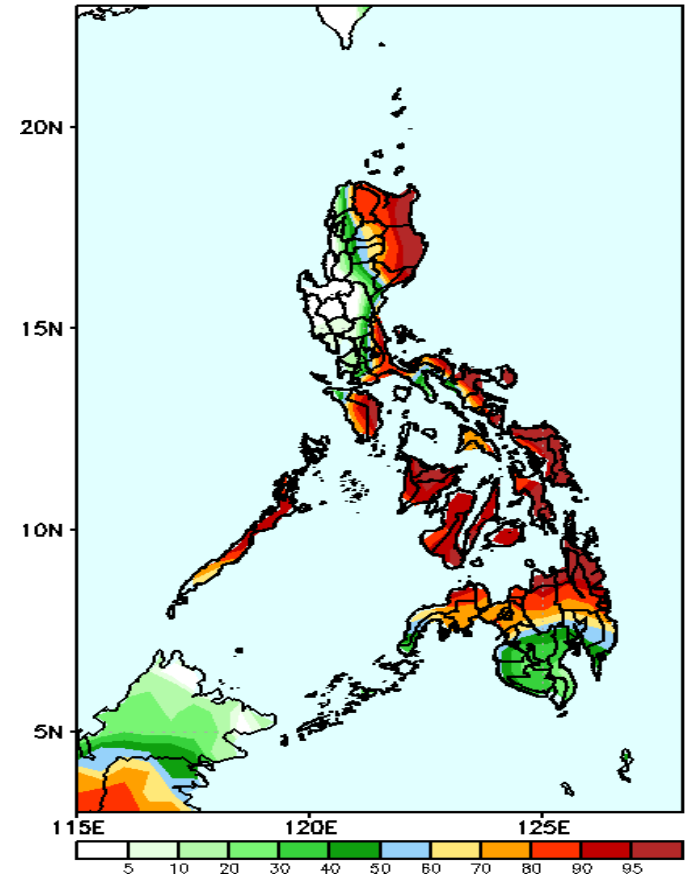
Increase of rainfall of 60-100mm is expected in northern Luzon and most parts of Visayas and Mindanao during the forecast period

GEFS Week-1 Exceedance Prob. > 25mm
Valid: 20211215 - 20211221



High probability of rainfall to exceed 25mm in most parts of the country except Ilocos Region and most parts of Central Luzon (except Aurora) and Cavite during the forecast period.

GEFS Week-1 Exceedance Prob. > 50mm
Valid: 20211215 - 20211221

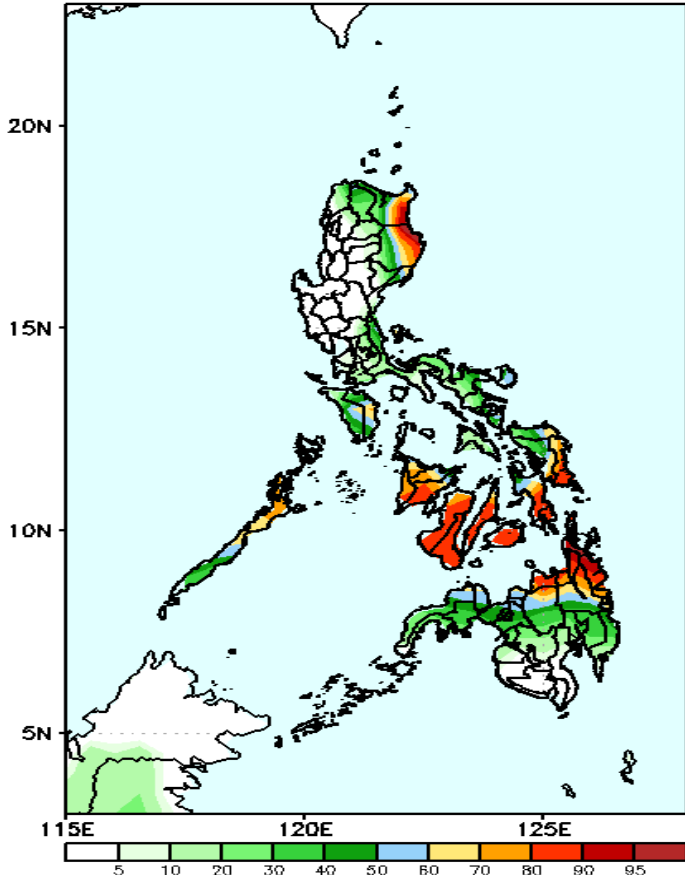


High probability of rainfall to exceed 50mm in some parts of CAR, Cagayan Valley, Quezon, Bicol region, MIMAROPA, most of Visayas, CARAGA, Northern Mindanao, Lanao del Sur, parts of Davao region and Zamboanga peninsula while less likely for the rest of the county during the forecast period.

Exceedance Probability > 100/150/200 mm

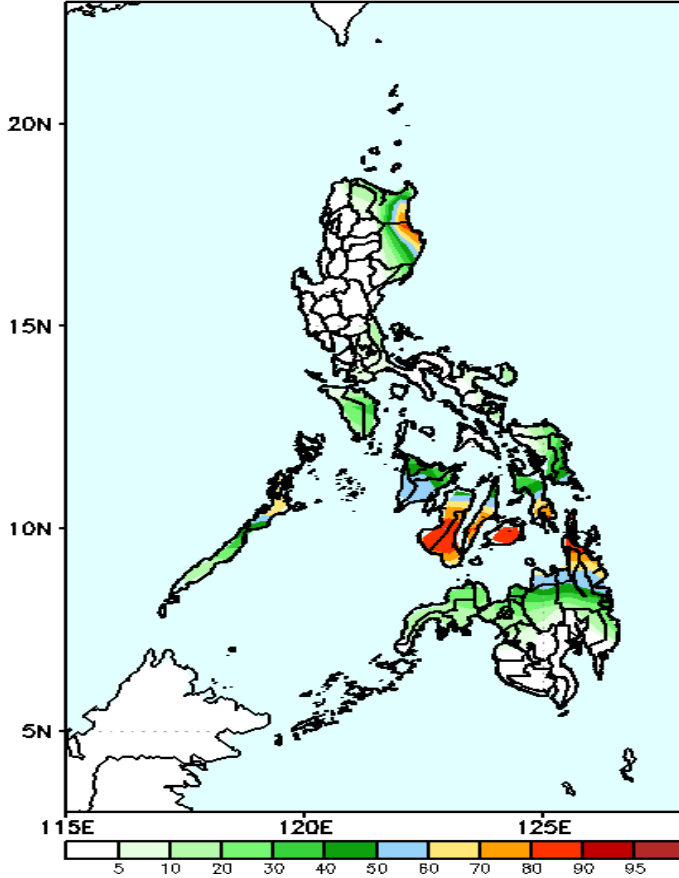
Week 1: Dec 15-21, 2021

GEFS Week-1 Exceedance Prob. > 100mm
Valid: 20211215 - 20211221



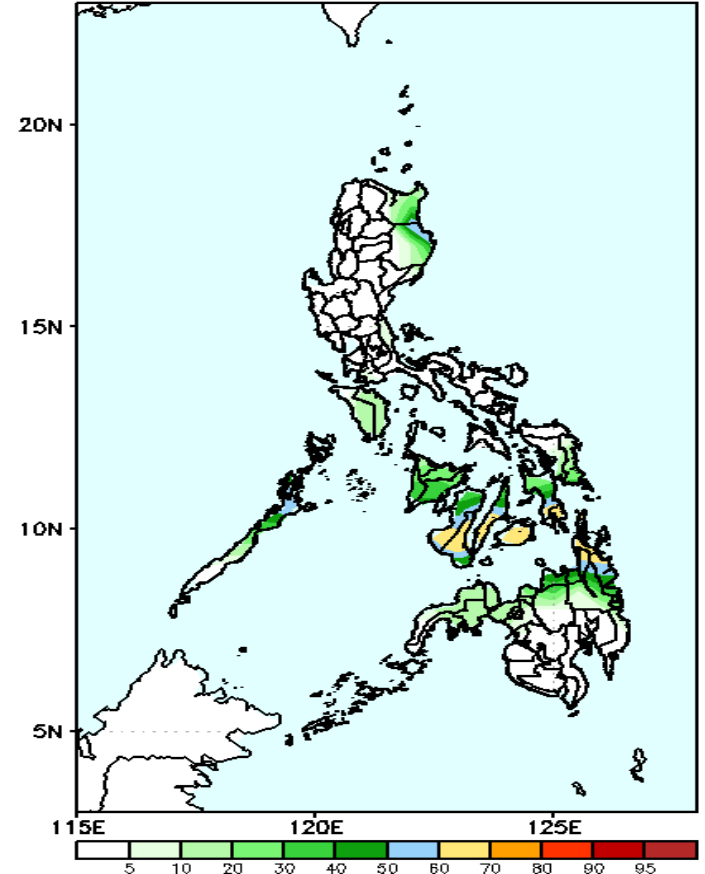
60–90% probability of rainfall to exceed 100mm in some parts of Cagayan and Isabela, Southern Leyte, Central and Western Visayas, CARAGA, Camiguin and Misamis Oriental while less likely for the rest of the county during the forecast period during the forecast period.

GEFS Week-1 Exceedance Prob. > 150mm
Valid: 20211215 - 20211221



60– 90% probability of rainfall to exceed 150mm in Southern Leyte, Central Visayas, southern portion of Negros Occidental, CARAGA and northern portion of Misamis Oriental while less likely for the rest of the county during the forecast period during the forecast period.

GEFS Week-1 Exceedance Prob. > 200mm
Valid: 20211215 - 20211221



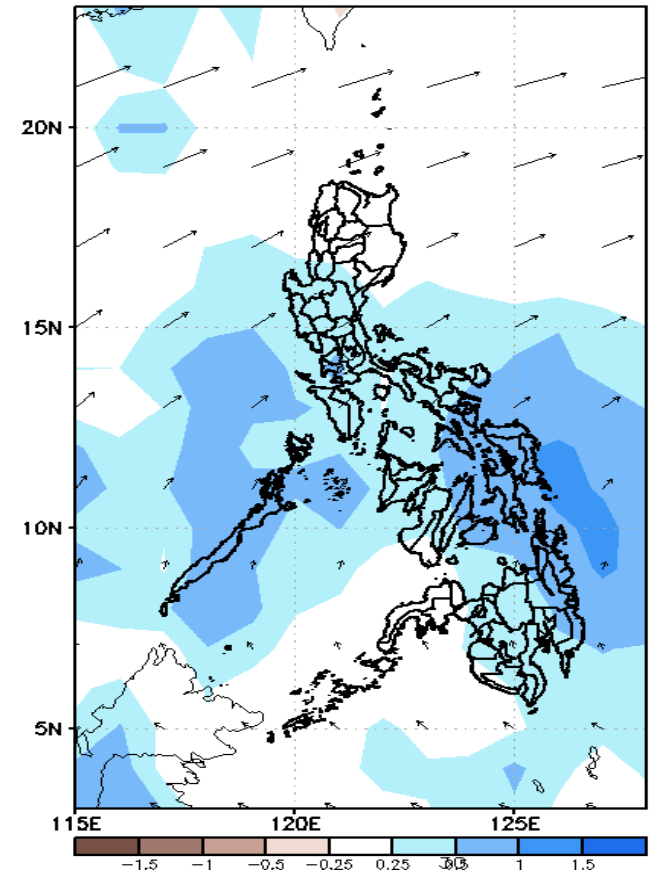
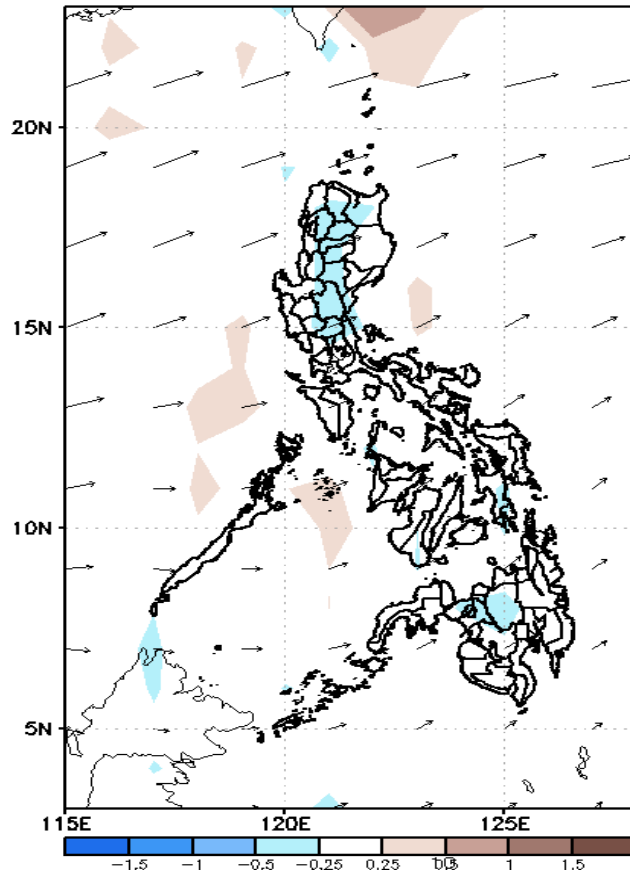
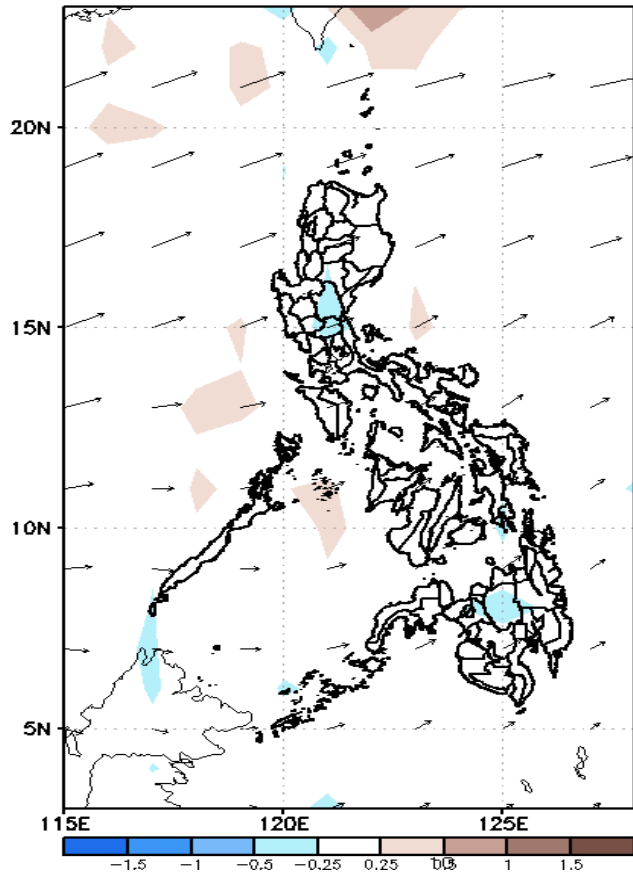
Less probability of rainfall to exceed 200mm in most parts of the country is expected during the forecast period.



GEFS Week-2 Forecasts: Divergence & Wind Anomaly

Week 2: Dec 22-28, 2021

GEFS Week-2 850-hPa Divergence and Wind Anom Valid: 20211222 - 20211228
GEFS Week-2 700-hPa Divergence and Wind Anom Valid: 20211222 - 20211228
GEFS week-2 200-hPa Divergence and Wind Anom Valid: 20211222 - 20211228

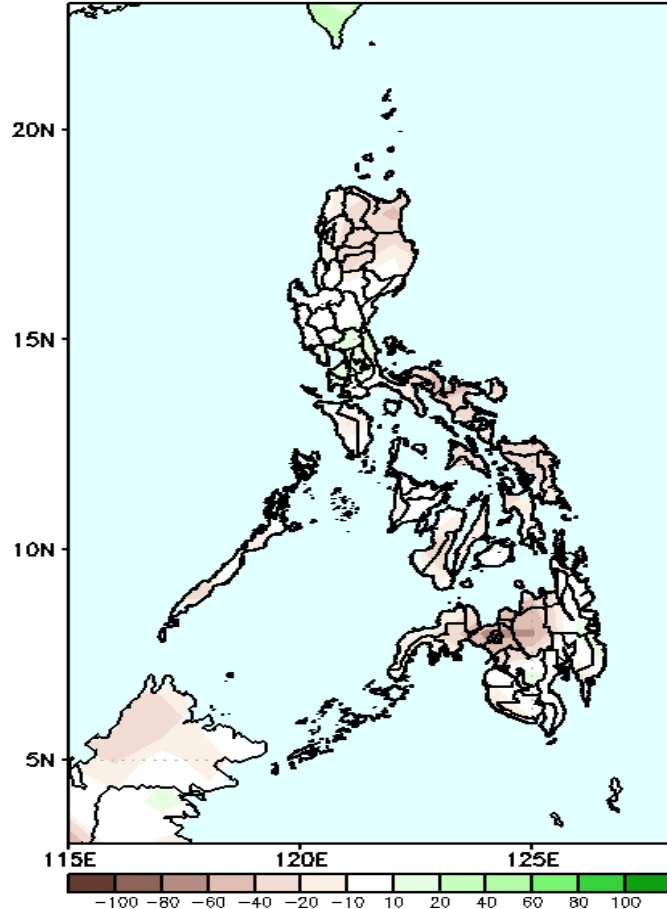


Upper and low level Divergence suggest likelihood of light to moderate precipitation in Central and Southern Luzon and most parts of Visayas and Mindanao. Easterlies affecting most parts of the country during the forecast period.

Precipitation Anomaly and Exceedance Probability > 25/50 mm

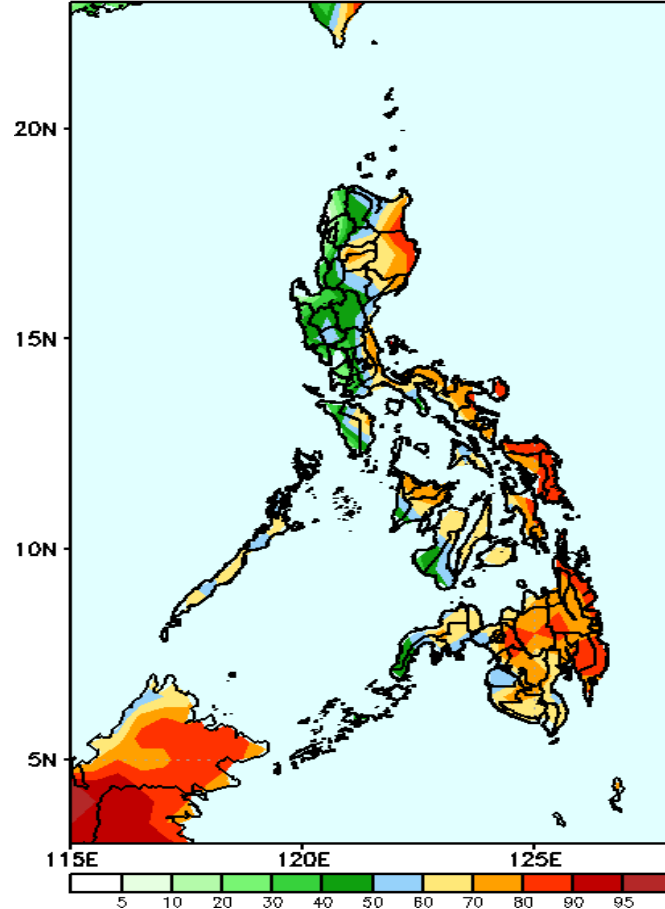
Week 2: Dec 22-28, 2021

GEFS Week-2 Precip Anomaly
Valid: 20211222 - 20211228



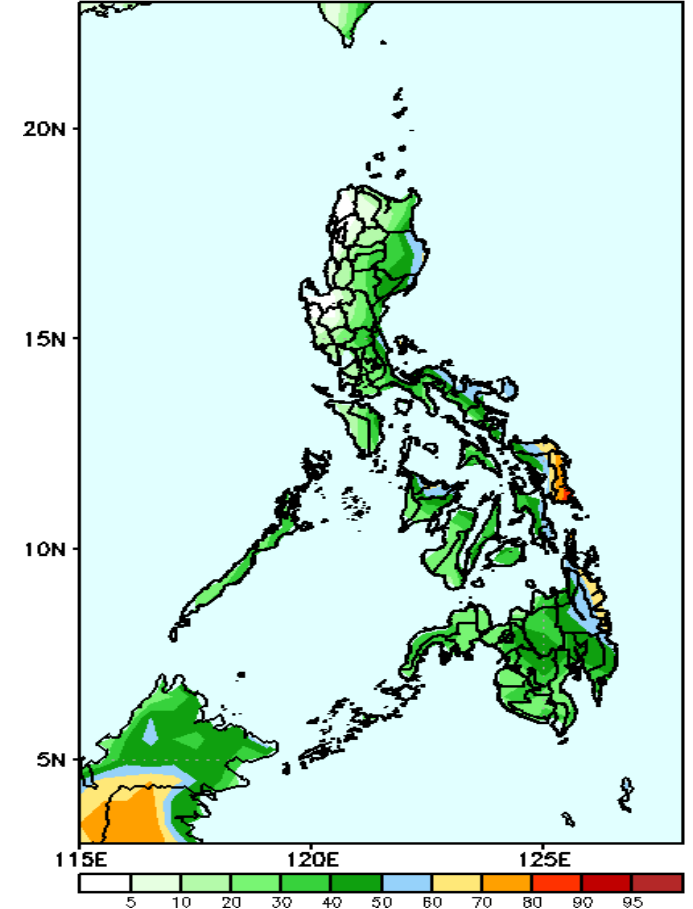
Rainfall deficit of 40-100mm is expected in most parts of the country during the forecast period.

GEFS Week-2 Exceedance Prob. > 25mm
Valid: 20211222 - 20211228



High probability of rainfall to exceed 25mm in some parts of CAR, Cagayan Valley, Aurora, Quezon, Bicol Region, Palawan, most of Visayas and Mindanao during the forecast period.

GEFS Week-2 Exceedance Prob. > 50mm
Valid: 20211222 - 20211228



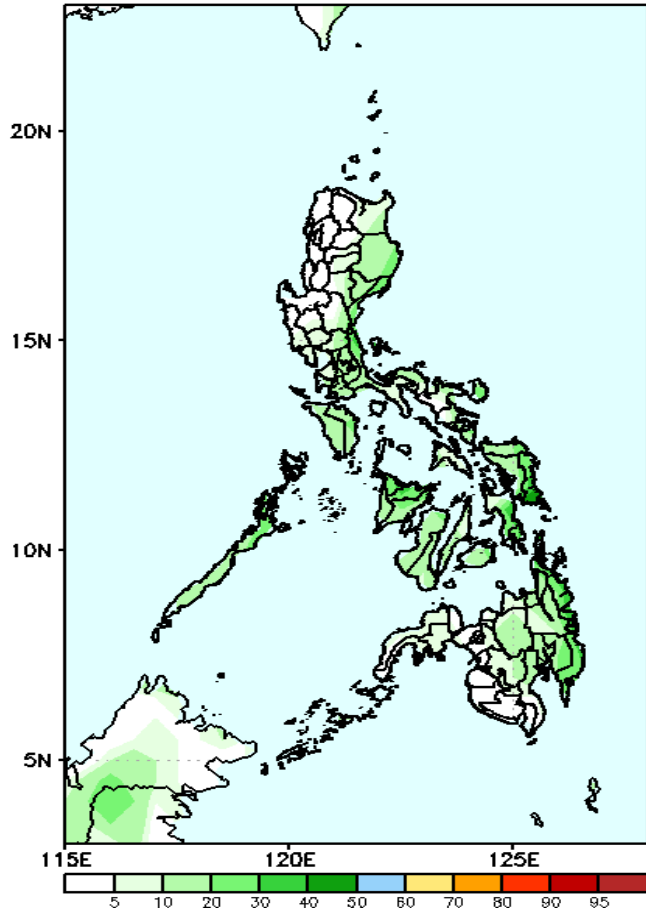
Low probability of rainfall to exceed 50mm in most parts of the country except Eastern Samar and Surigao provinces during the forecast period.



Exceedance Probability > 100/150/200 mm

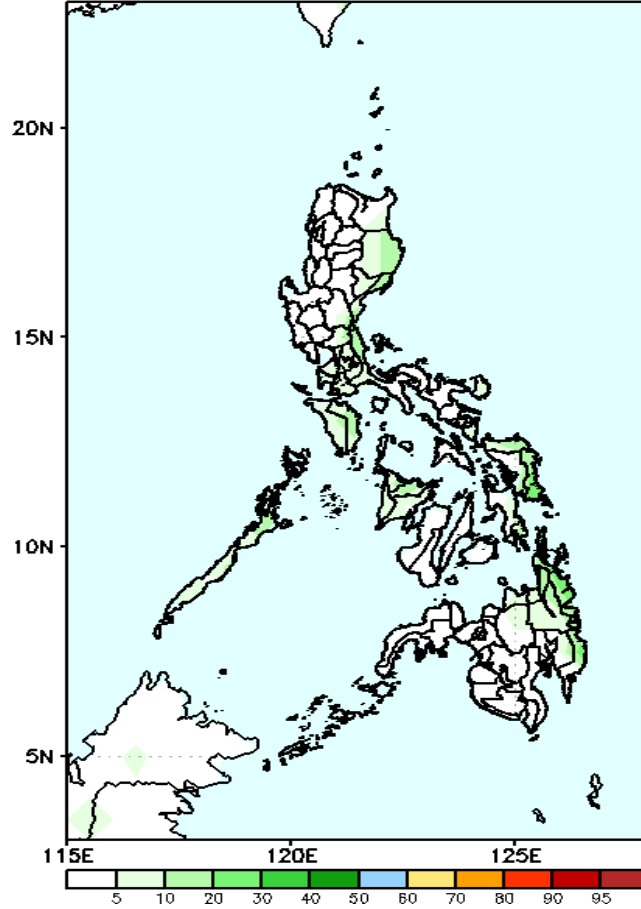
Week 2: Dec 22-28, 2021

GEFS Week-2 Exceedance Prob. > 100mm
Valid: 20211222 - 20211228



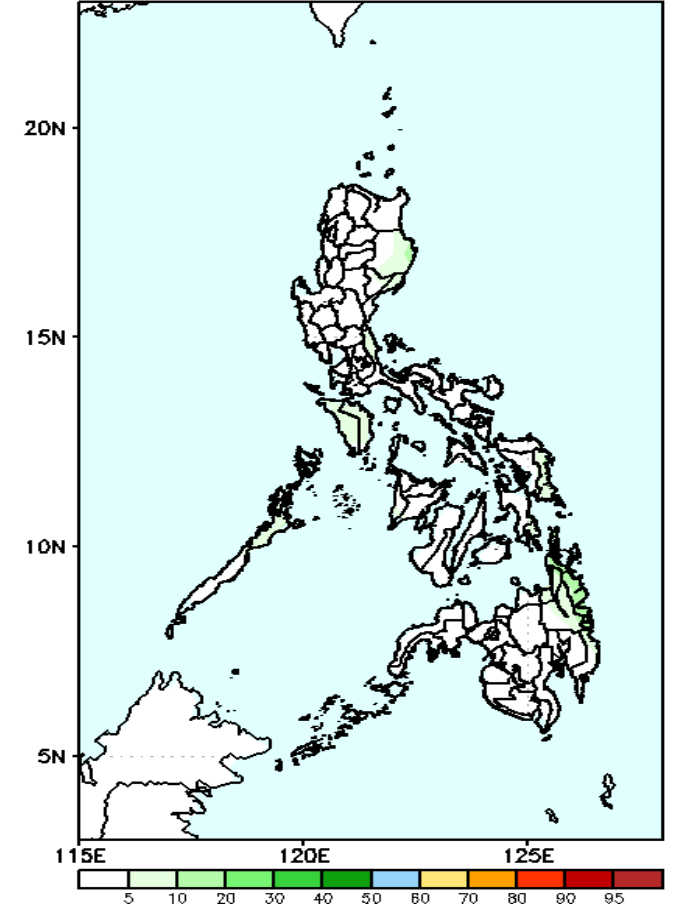
Less probability of rainfall to exceed 100mm in most parts of the country is expected during the forecast period.

GEFS Week-2 Exceedance Prob. > 150mm
Valid: 20211222 - 20211228



Less probability of rainfall to exceed 150mm in most parts of the country is expected during the forecast period.

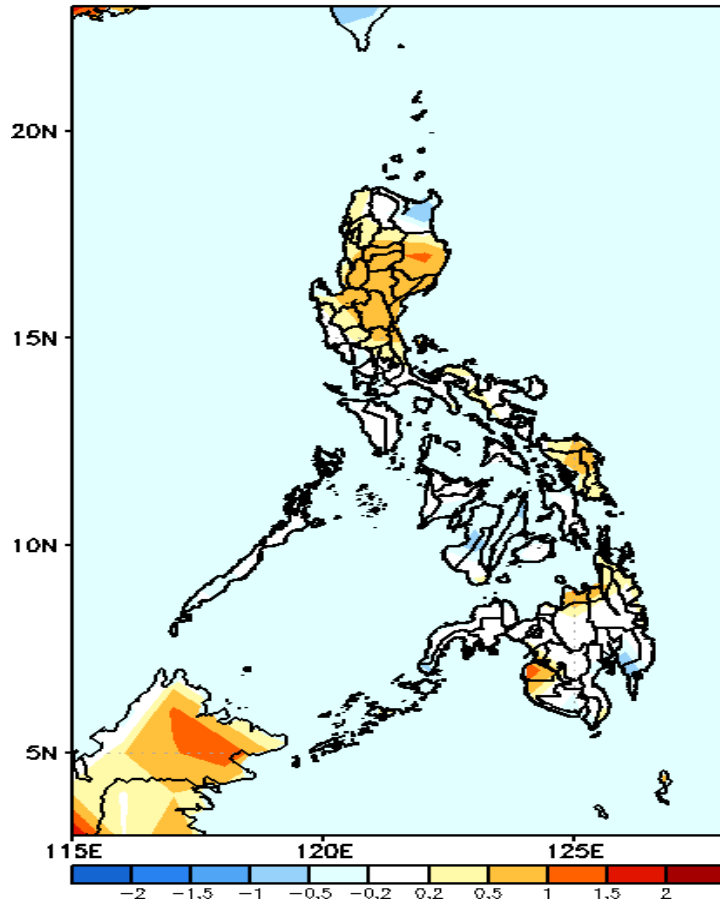
GEFS Week-2 Exceedance Prob. > 200mm
Valid: 20211222 - 20211228



Less probability of rainfall to exceed 200mm in most parts of the country is expected during the forecast period.

GEFS Week-1 & 2 Forecasts: T2m Anomaly

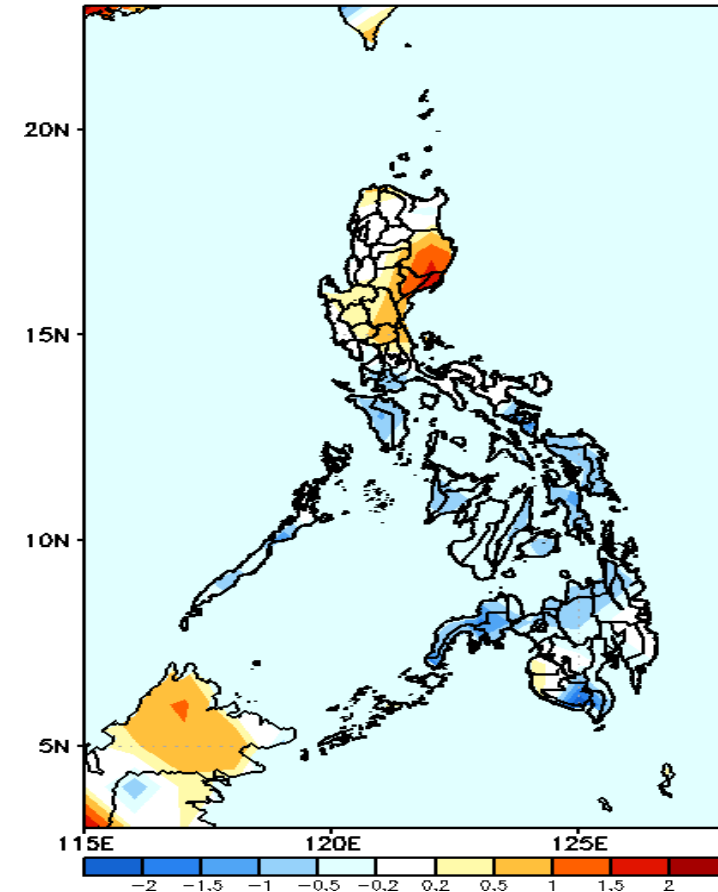
GEFS Week-1 T2m Anomaly
Valid: 20211215 - 20211221



2m Temperature Week 1: Dec 15-21, 2021

Slightly warmer to warmer than average surface air temperature will likely experience in most parts of Luzon, Eastern Visayas, Misamis Oriental and Maguindanao while average to slightly cooler temperature for the rest of the country during the forecast period.

GEFS Week-2 T2m Anomaly
Valid: 20211222 - 20211228



2m Temperature Week 2: Dec 22-28, 2021

Slightly warmer to warmer than average surface air temperature will likely experience in most parts of eastern Luzon & Central Luzon (especially Isabela) while average to slightly cooler temperature for the rest of the country during the forecast period.

