



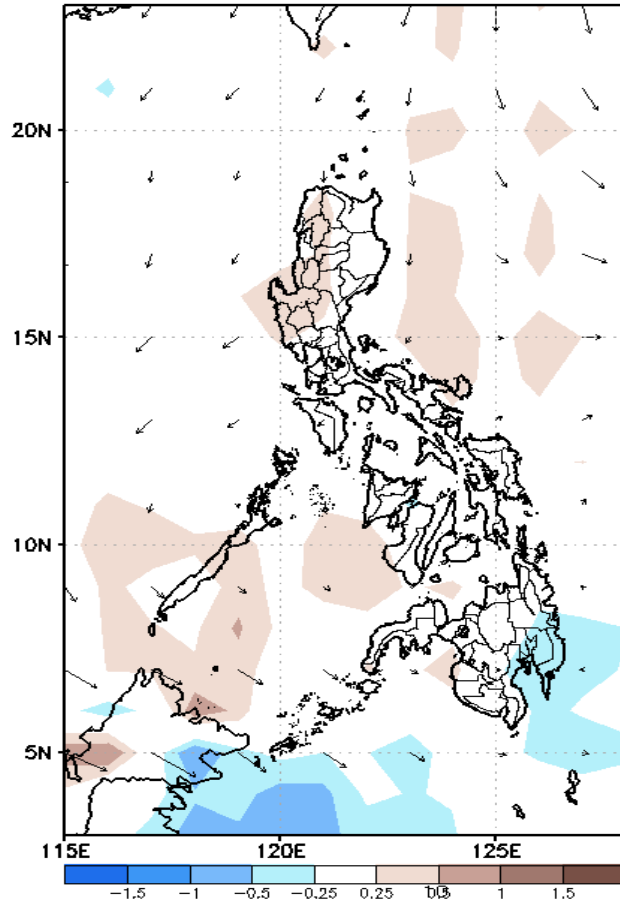
Week 1 & Week 2 Forecast for the Philippines using GEFS Model



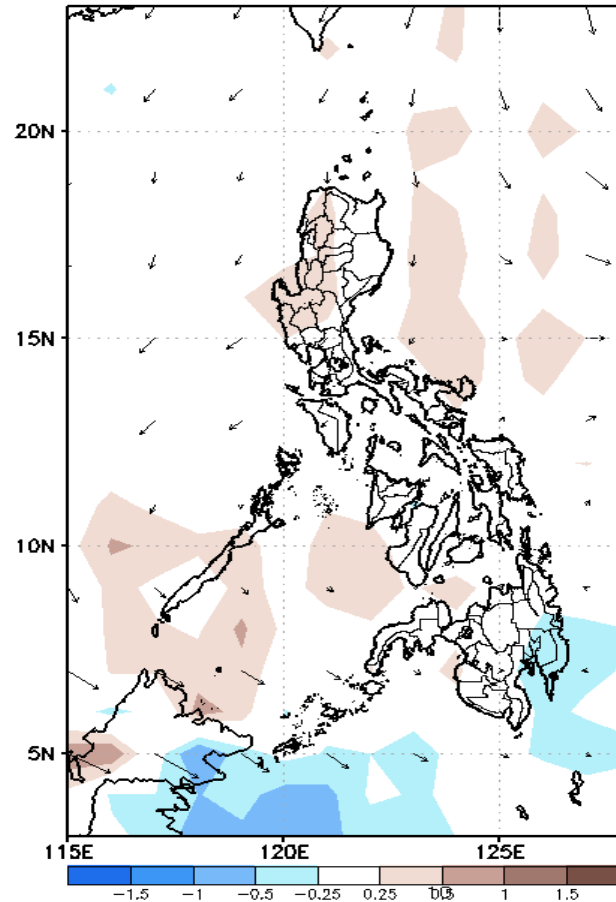
GEFS Week-1 Forecasts: Divergence & Wind Anomaly

Week 1: July 15-21 2021

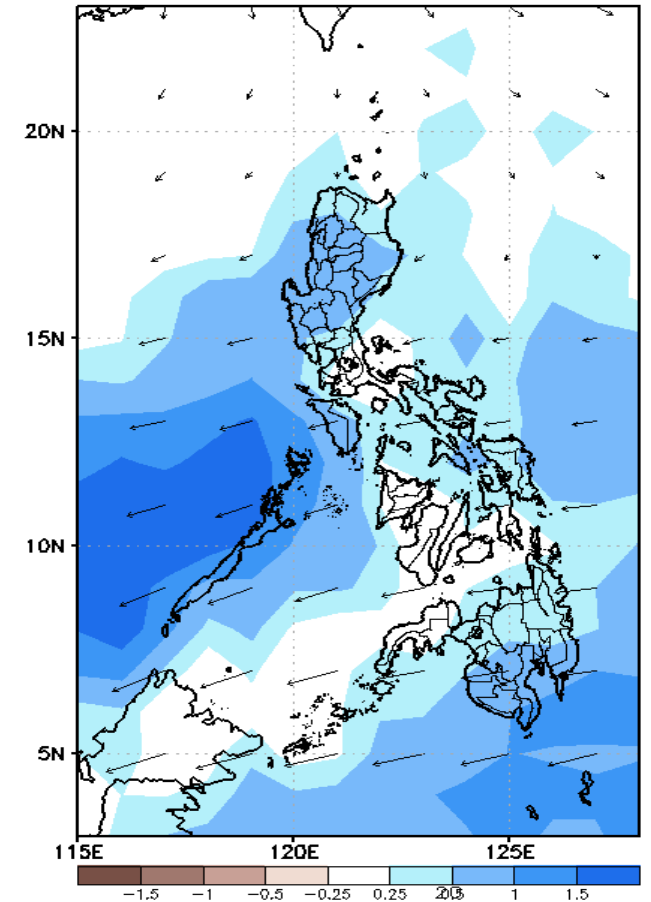
GEFS Week-1 850-hPa Divergence and Wind Anom
Valid: 20210715 - 20210721



GEFS Week-1 700-hPa Divergence and Wind Anom
Valid: 20210715 - 20210721



GEFS Week-1 200-hPa Divergence and Wind Anom
Valid: 20210715 - 20210721

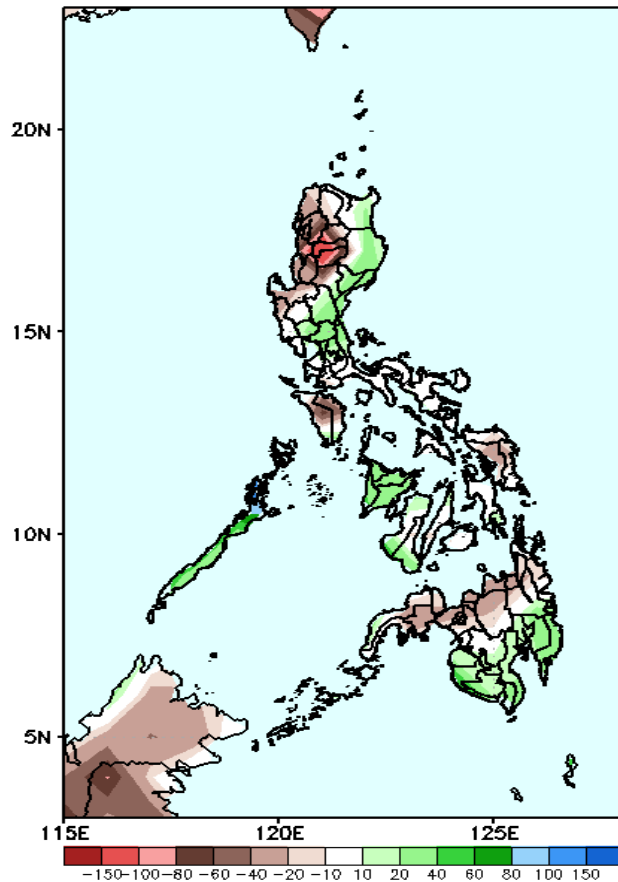


Upper and low level Divergence suggest likelihood of precipitation in most parts of Luzon, Eastern Visayas and Mindanao. Southwest monsoon affecting parts of Western Luzon while Easterlies affecting the rest of the country. Attributing to warmer temperature and higher heat index; with humid environment(especially in the western section of the country) during the forecast period.

Precipitation Anomaly and Exceedance Probability > 25/50 mm

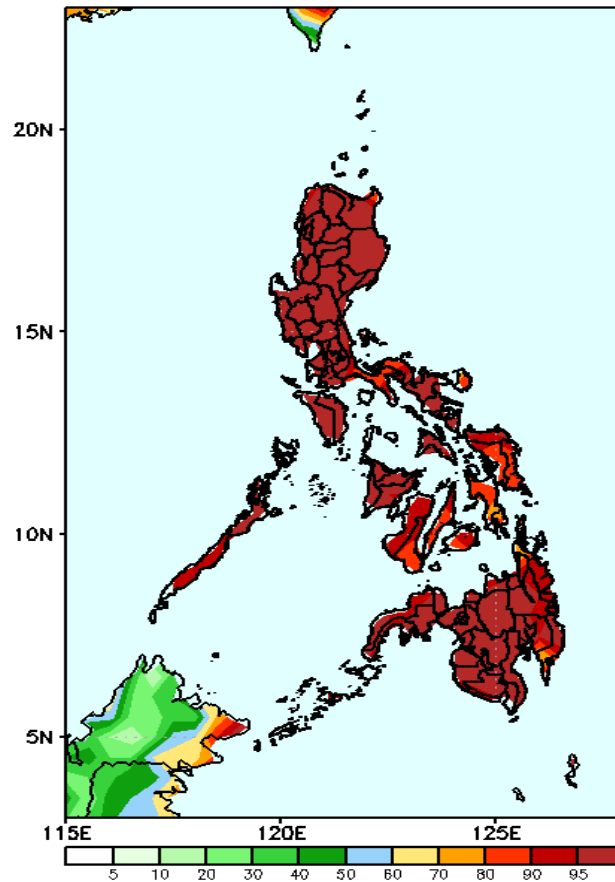
Week 1: July 15-21 2021

GEFS Week-1 Precip Anomaly
Valid: 20210715 - 20210721



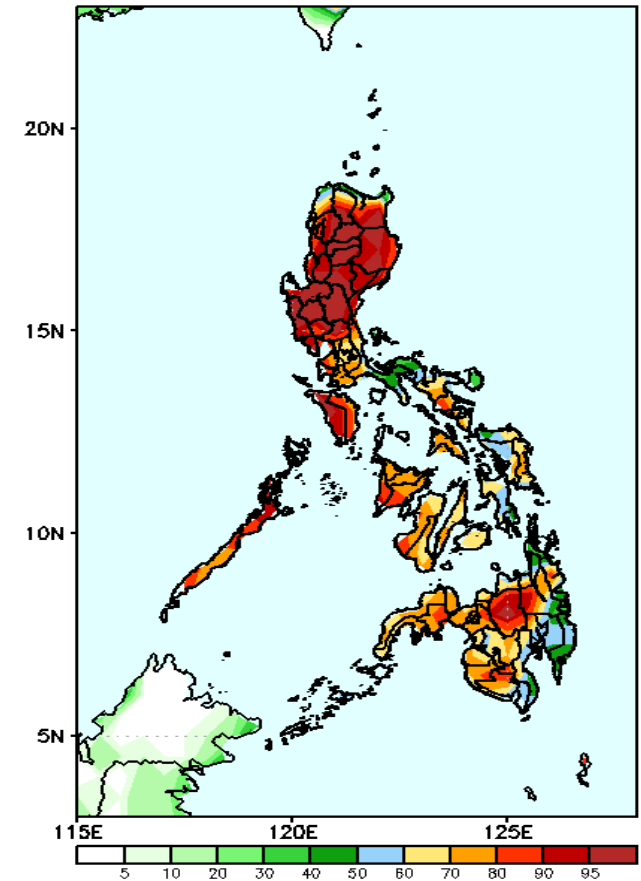
Rainfall deficit of 40-150mm is expected in the western section of Luzon, Mindoro, Samar prov while 40-80mm increase of rainfall in most parts of Mindanao during the forecast period.

GEFS Week-1 Exceedance Prob. > 25mm
Valid: 20210715 - 20210721



High probability of rainfall to exceed 25mm in most parts of the country during the forecast period.

GEFS Week-1 Exceedance Prob. > 50mm
Valid: 20210715 - 20210721



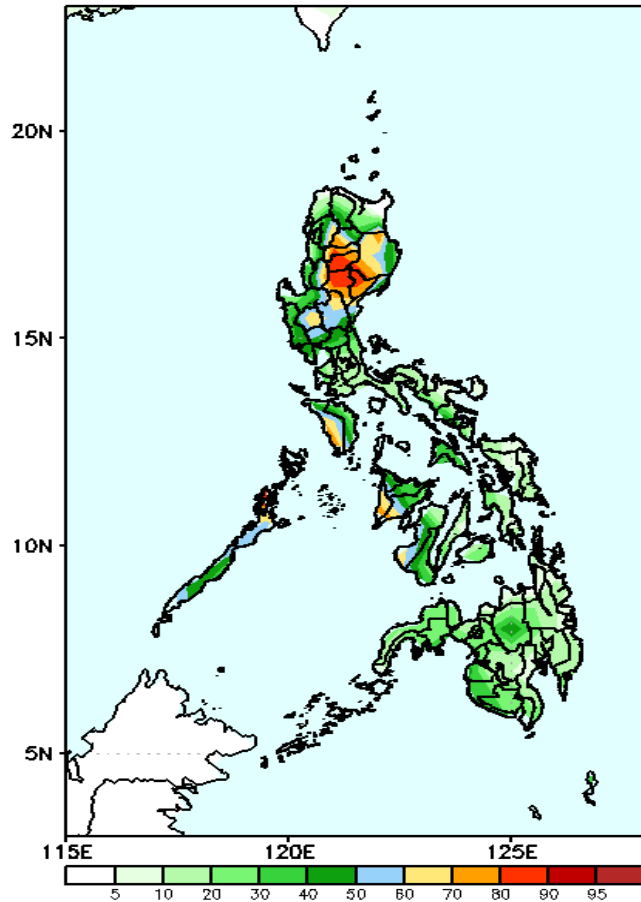
High probability of rainfall to exceed 50mm in most parts of the country during the forecast period.



Exceedance Probability > 100/150/200 mm

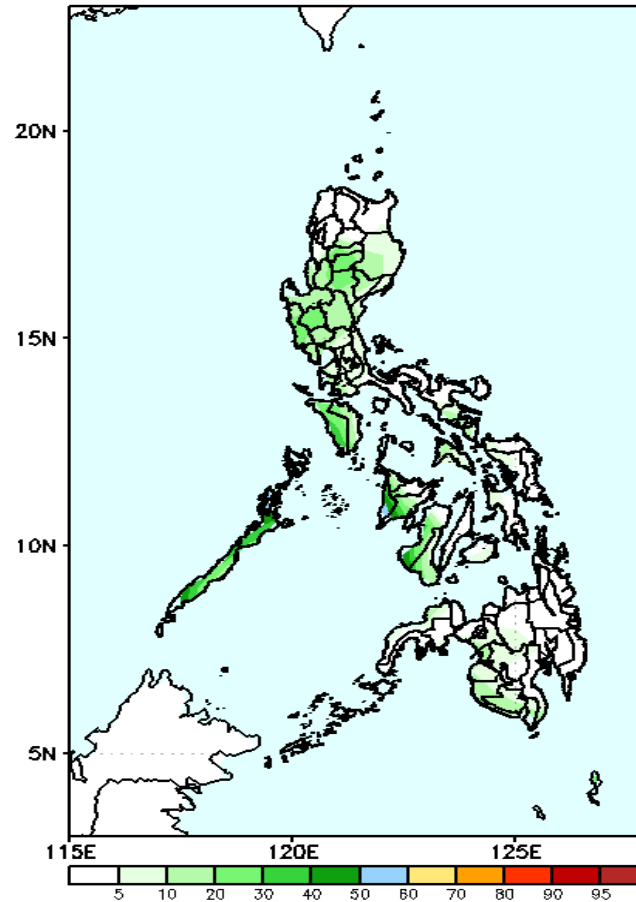
Week 1: July 15-21 2021

GEFS Week-1 Exceedance Prob. > 100mm
Valid: 20210715 - 20210721



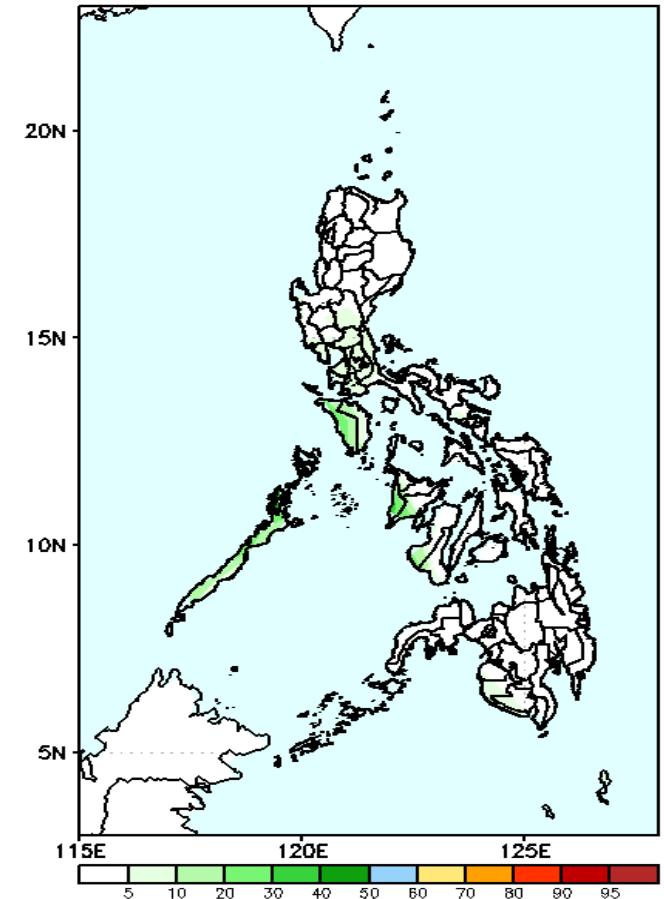
High probability of rainfall to exceed 100mm in most parts of CAR, Nueva Vizcaya, Mindoro Occidental and Antique while less likely for the rest of the country during the forecast period.

GEFS Week-1 Exceedance Prob. > 150mm
Valid: 20210715 - 20210721



Less probability of rainfall to exceed 150mm in most parts of the country during the forecast period.

GEFS Week-1 Exceedance Prob. > 200mm
Valid: 20210715 - 20210721



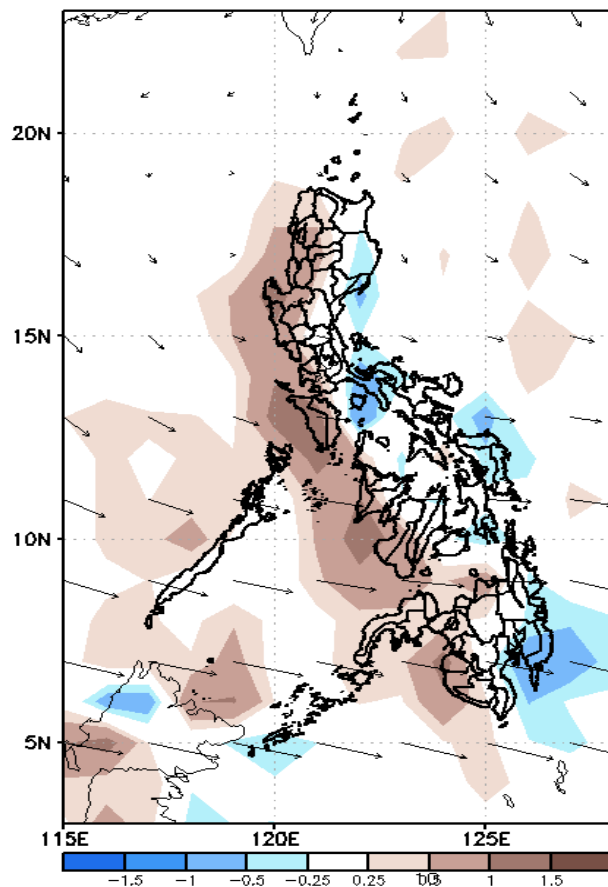
Less probability of rainfall to exceed 200mm in most parts of the country during the forecast period.



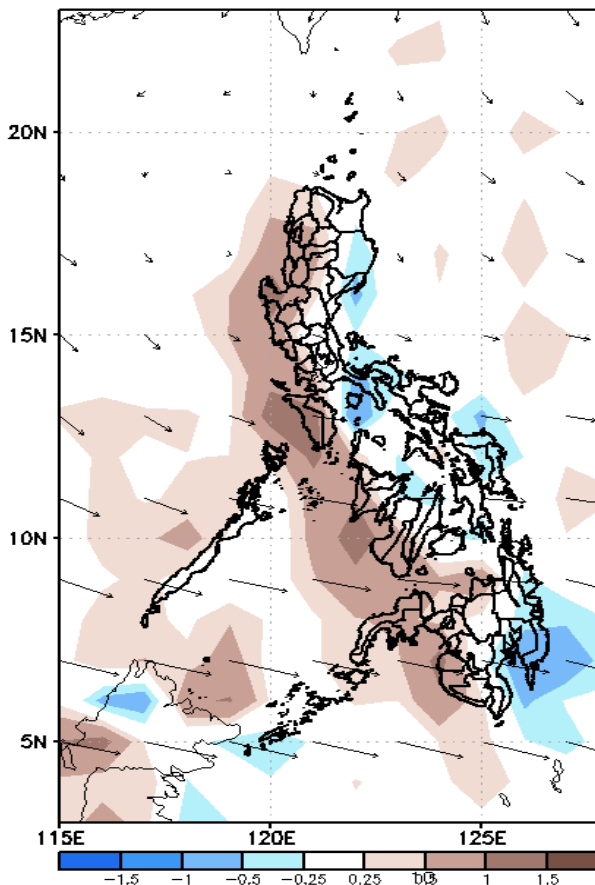
GEFS Week-2 Forecasts: Divergence & Wind Anomaly

Week 2: July 22-28, 2021

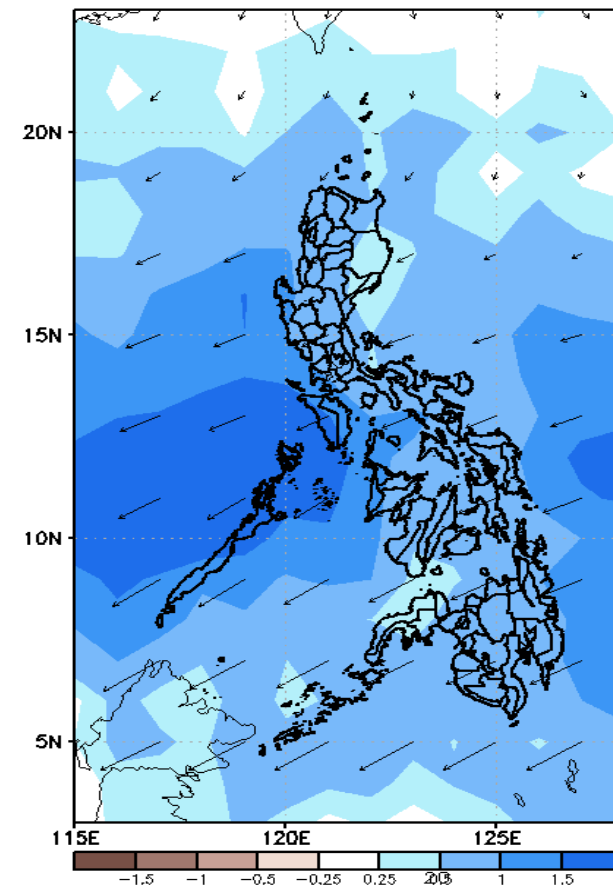
GEFS Week-2 850-hPa Divergence and Wind Anomc
Valid: 20210722 - 20210728



GEFS Week-2 700-hPa Divergence and Wind Anomc
Valid: 20210722 - 20210728



GEFS week-2 200-hPa Divergence and Wind Anom
Valid: 20210722 - 20210728

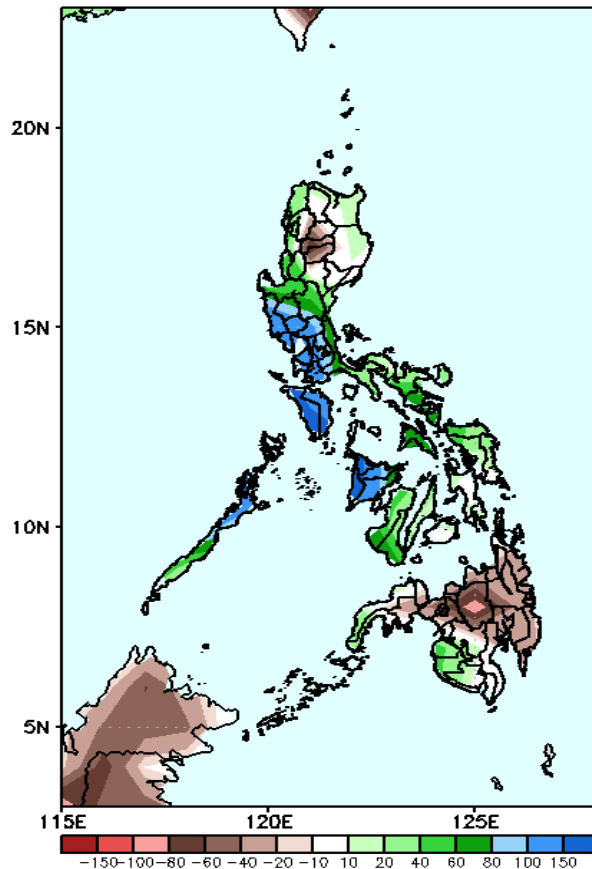


Upper and low level Divergence suggest likelihood of precipitation in most parts of the country. Southwest monsoon affecting most parts of the country. Attributing to warmer temperature with humid environment(especially in the western section of the country) during the forecast period.

Precipitation Anomaly and Exceedance Probability > 25/50 mm

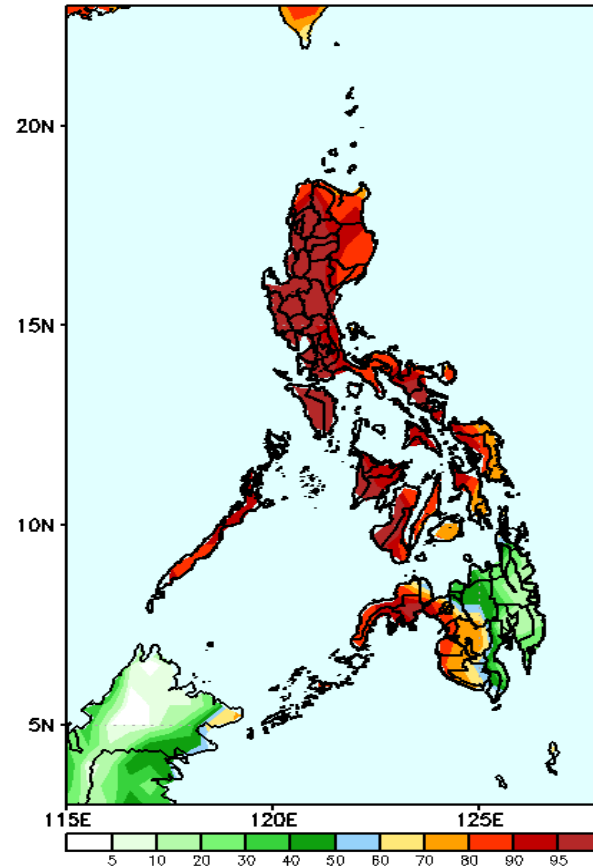
Week 2: July 22-28, 2021

GEFS Week-2 Precip Anomaly
Valid: 20210722 - 20210728



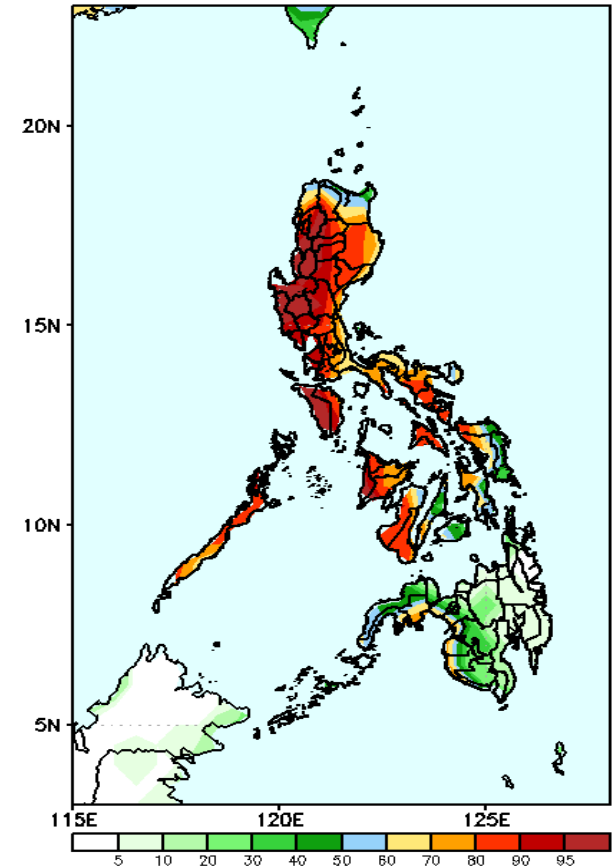
Rainfall deficit of 40-100mm is expected in Kalinga, Mt. Province, Ifugao and most parts of Mindanao while 60-150mm increase of rainfall in Central & Southern Luzon and most parts of Visayas during the forecast period.

GEFS Week-2 Exceedance Prob. > 25mm
Valid: 20210722 - 20210728



High probability of rainfall to exceed 25mm in most parts of the country except CARAGA, Northern Mindanao and Davao region during the forecast period.

GEFS Week-2 Exceedance Prob. > 50mm
Valid: 20210722 - 20210728

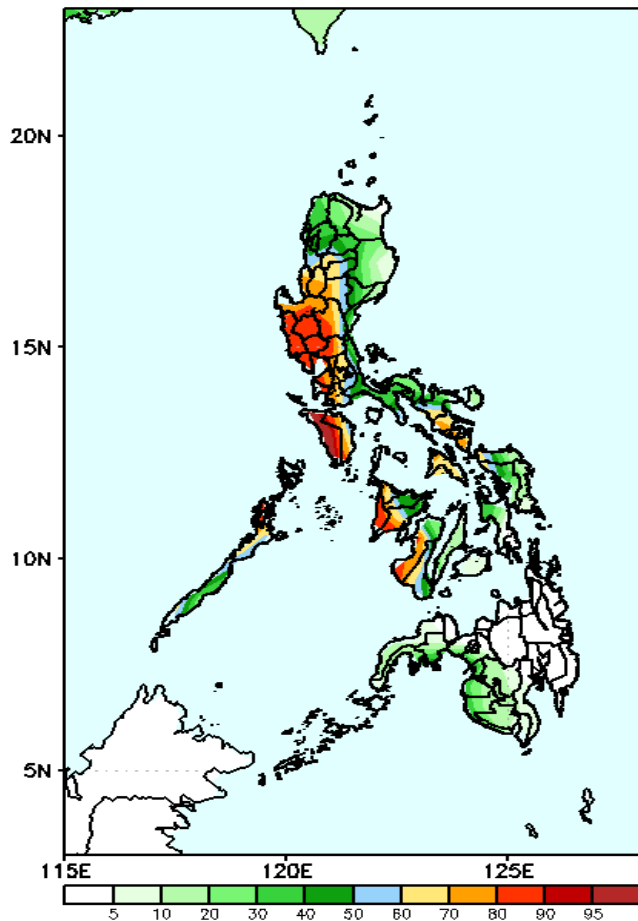


High probability of rainfall to exceed 50mm in most parts of Luzon and most of Visayas, while less likely for Mindanao during the forecast period.

Exceedance Probability > 100/150/200 mm

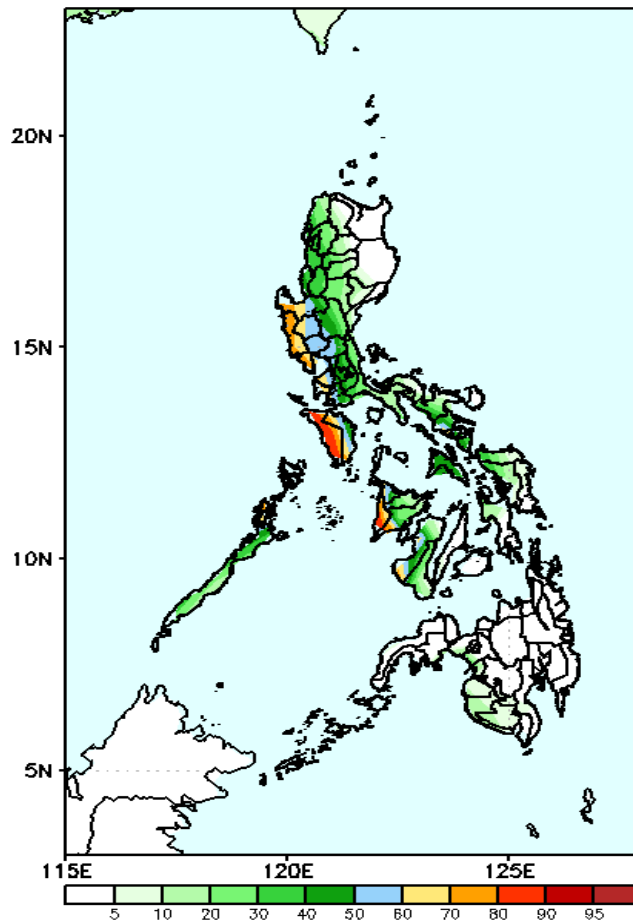
Week 2: July 22-28, 2021

GEFS Week-2 Exceedance Prob. > 100mm
Valid: 20210722 - 20210728



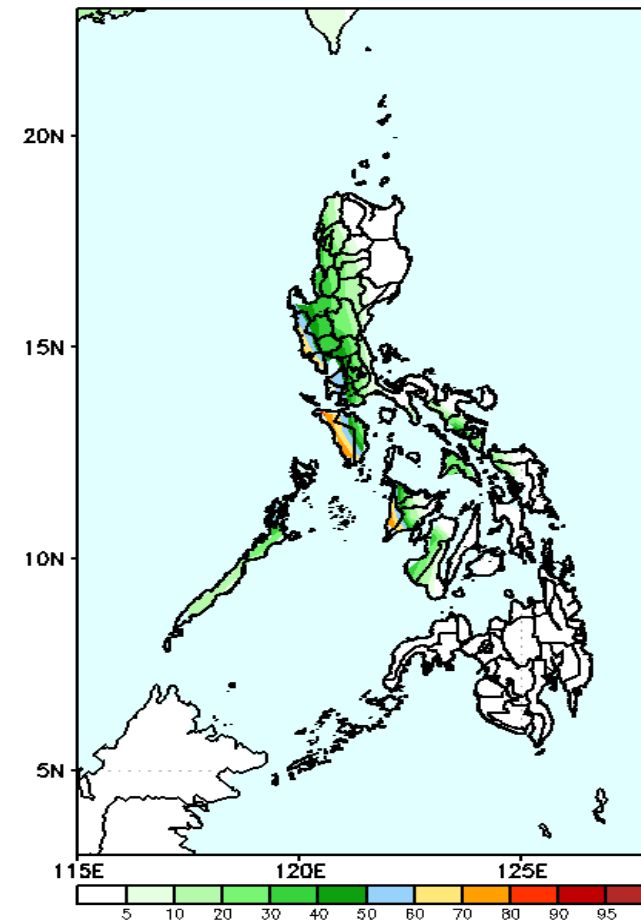
High probability of rainfall to exceed 100mm in most of Western and Central Luzon, Albay, Sorsogon and Western Visayas while less likely for the rest of the country during the forecast period.

GEFS Week-2 Exceedance Prob. > 150mm
Valid: 20210722 - 20210728



Less probability of rainfall to exceed 150mm in most parts of the country except in western parts of Central Luzon, Occidental Mindoro and Antique where there is 60-90% probability during the forecast period.

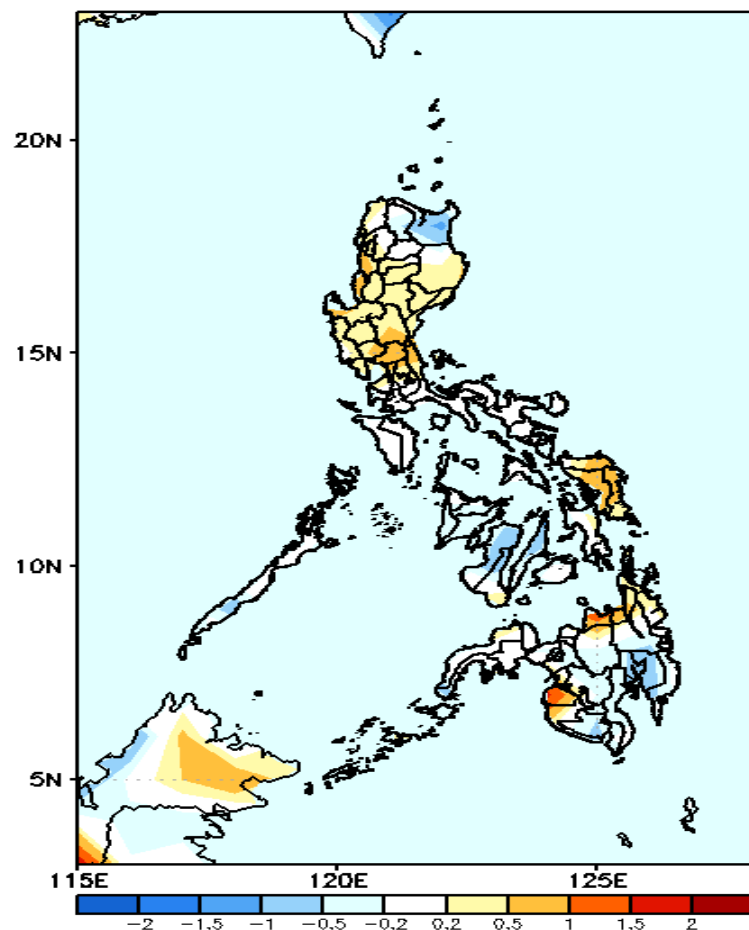
GEFS Week-2 Exceedance Prob. > 200mm
Valid: 20210722 - 20210728



Less probability of rainfall to exceed 200mm in most parts of the country during the forecast period.

GEFS Week-1 & 2 Forecasts: T2m Anomaly

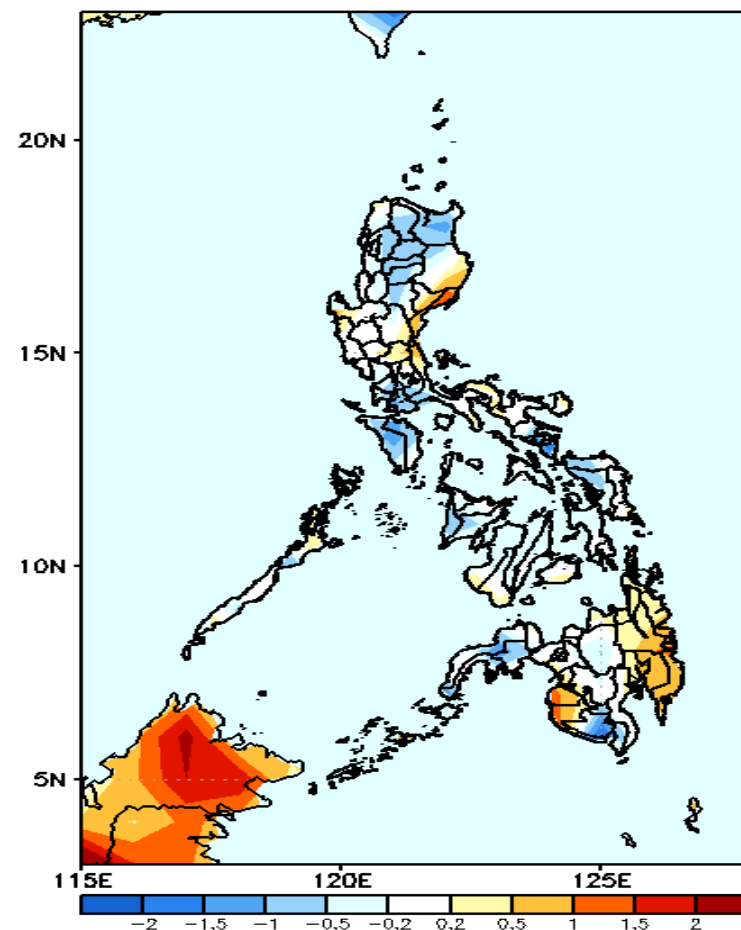
GEFS Week-1 T2m Anomaly
Valid: 20210715 - 20210721



2m Temperature Week 1: July 15-21 2021

Slightly warmer to warmer than average surface air temperature will likely experience in most parts of Luzon (except Isabela), Eastern Visayas, Northern Mindanao, Maguindanao and Sultan Kudarat while average to slightly cooler than average surface air temperature for the rest of the country during the forecast period.

GEFS Week-2 T2m Anomaly
Valid: 20210722 - 20210728



2m Temperature Week 2: July 22-28, 2021

Average to slightly cooler than average surface air temperature will likely experience in most parts of the country except in eastern Isabela, Quirino, Aurora, Maguindanao, Sultan Kudarat and eastern parts of Mindanao where slightly warmer to warmer than average temperature is expected during the forecast period.