



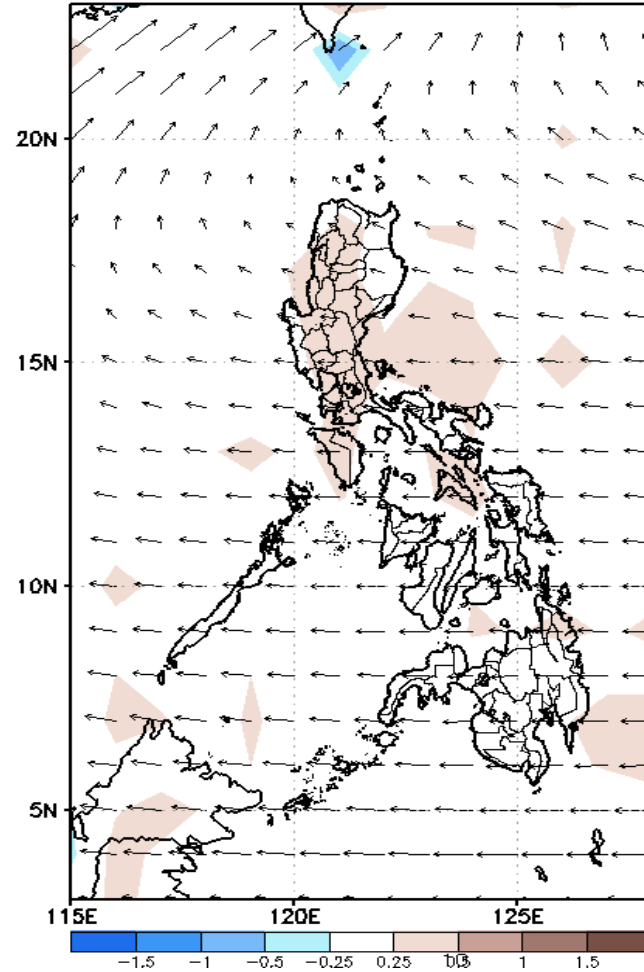
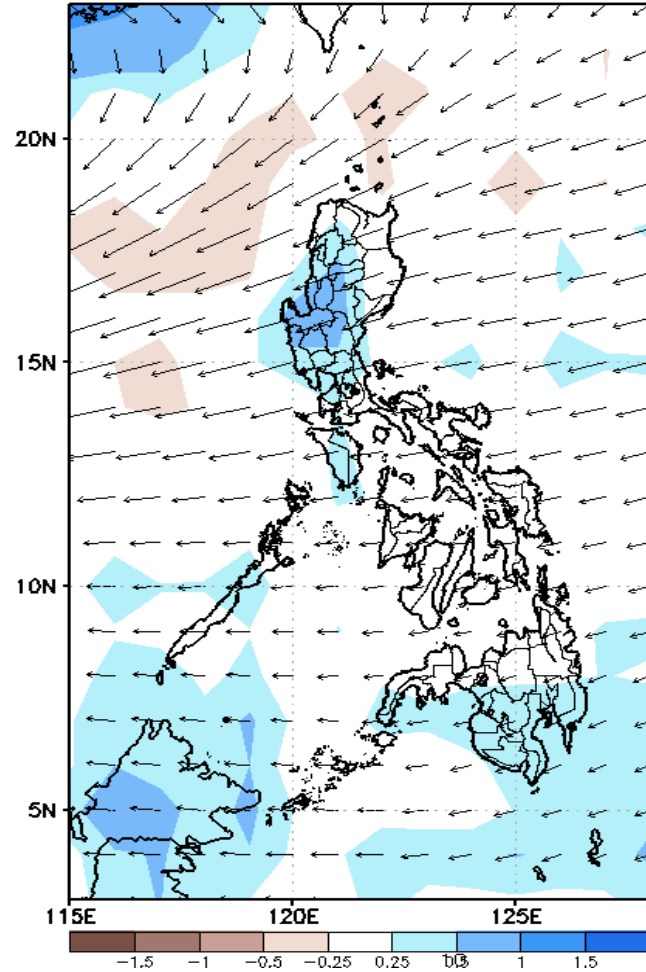
# Week 1 & Week 2 Forecast for the Philippines using GEFS Model



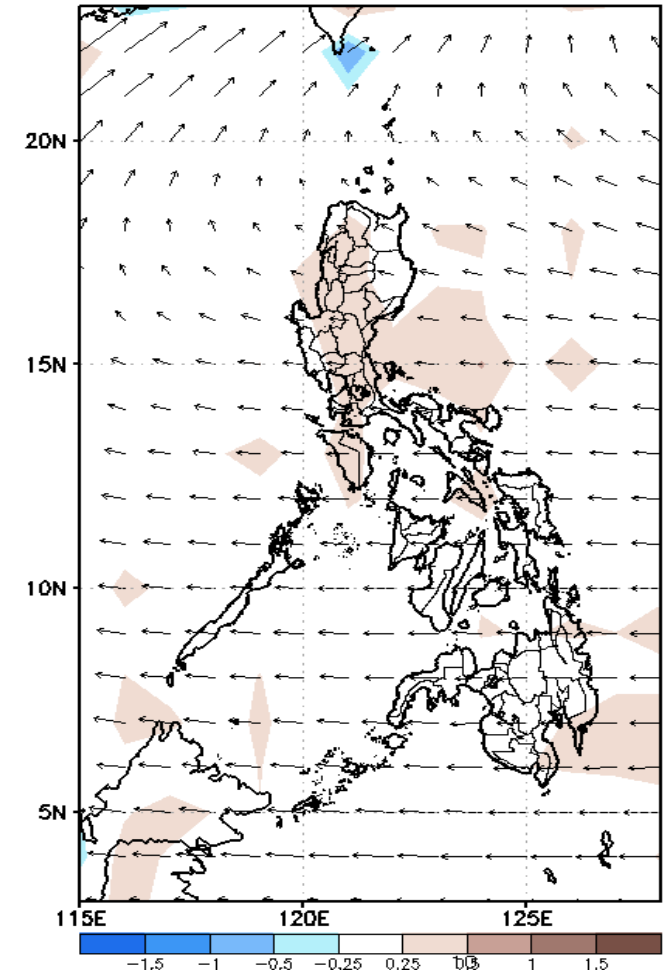
# GEFS Week-1 Forecasts: Wind Anomaly Forecast

Week 1 Jun 15-21, 2022

GEFS Week-1 200-hPa Divergence and Wind Anomaly  
Valid: 20220615 - 20220621



GEFS Week-1 700-hPa Divergence and Wind Anomaly  
Valid: 20220615 - 20220621

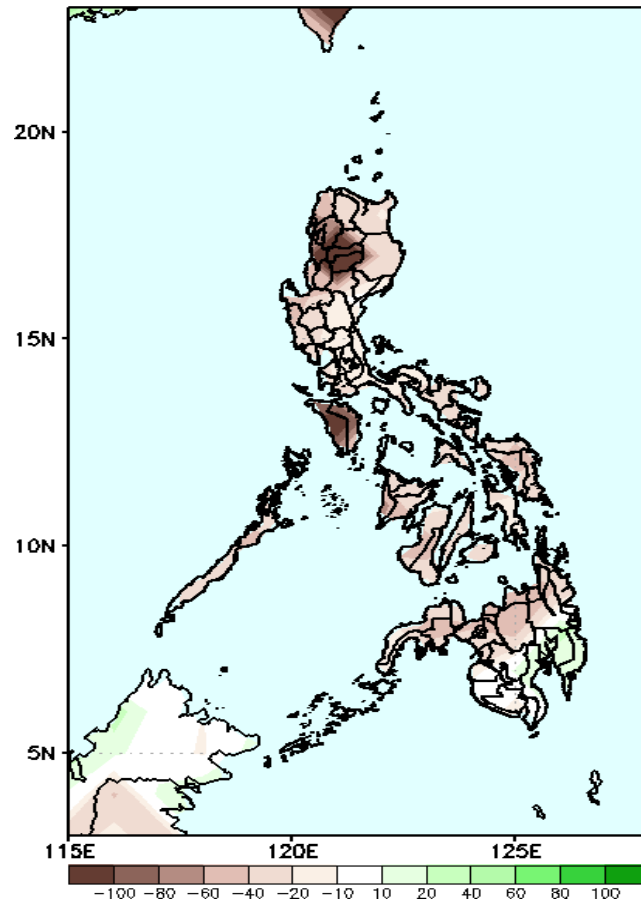


Easterlies affecting most parts of the country attributing to high likelihood of localized thunderstorms in most parts of the country during the forecast period

# Precipitation Anomaly and Exceedance Probability > 25/50 mm

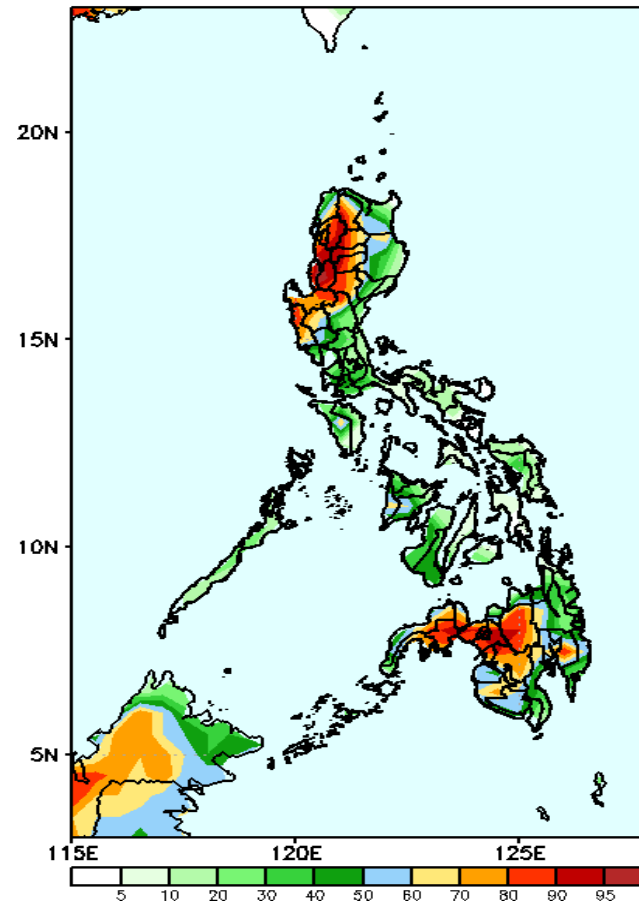
Week 1: Jun 15-21, 2022

GEFS Week-1 Precip Anomaly  
Valid: 20220615 - 20220621



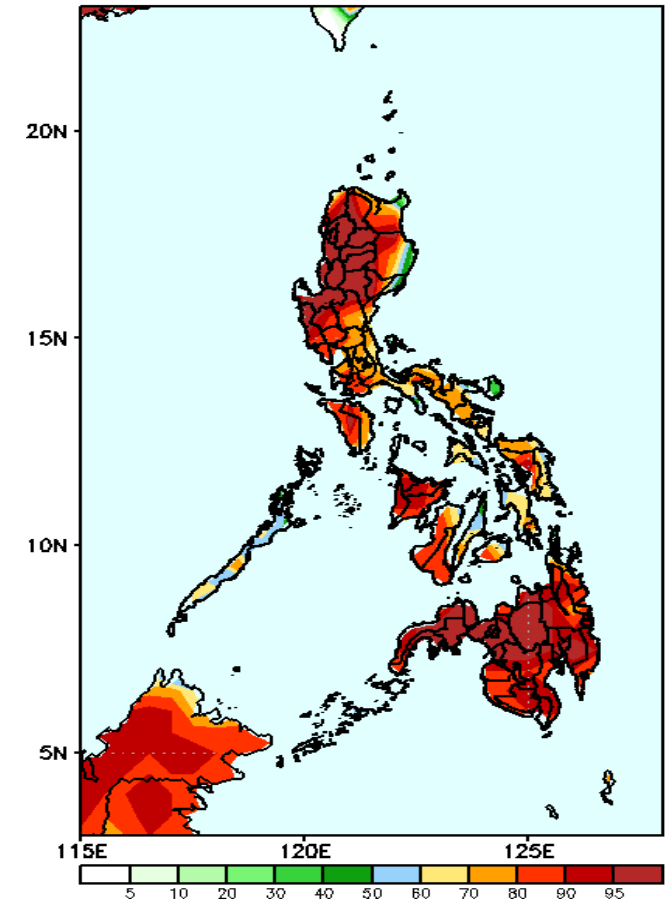
Rainfall deficit of more than 100mm is expected in Ilocos & Cordillera Region & Mindoro and 40-100mm for the rest of the country during the forecast period.

GEFS Week-1 Exceedance Prob. > 50mm  
Valid: 20220615 - 20220621



High probability of rainfall to exceed 25mm in most parts of the country during the forecast period.

GEFS Week-1 Exceedance Prob. > 25mm  
Valid: 20220615 - 20220621

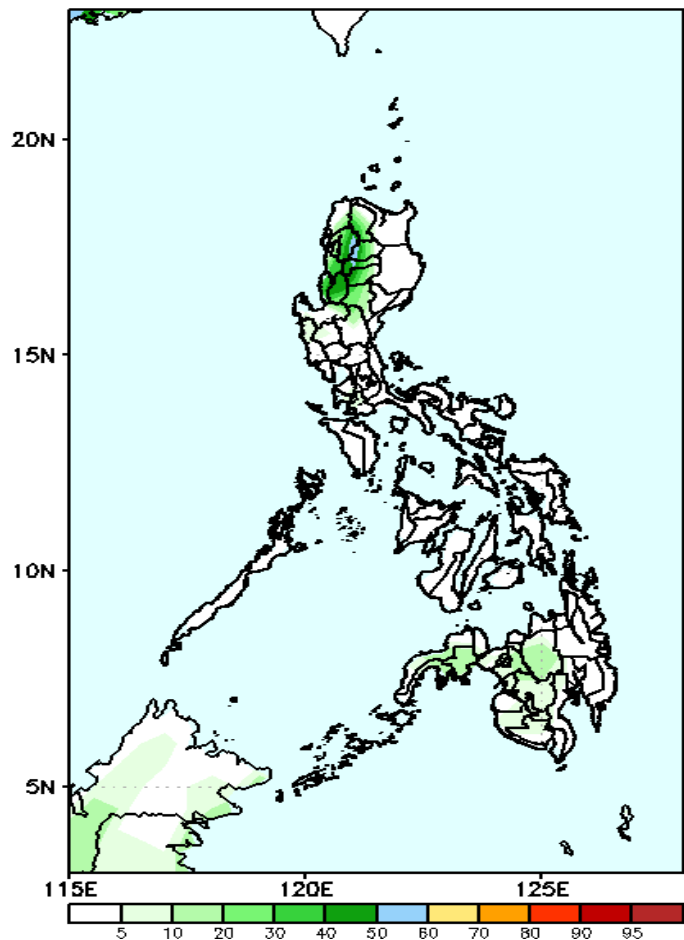


High probability of rainfall to exceed 50mm in most parts of Cordillera region, La union, Pangasinan, Zambales, Tarlac and most parts of Western and Central Mindanao while less likely for the rest the country during the forecast period.

# Exceedance Probability > 100/150/200 mm

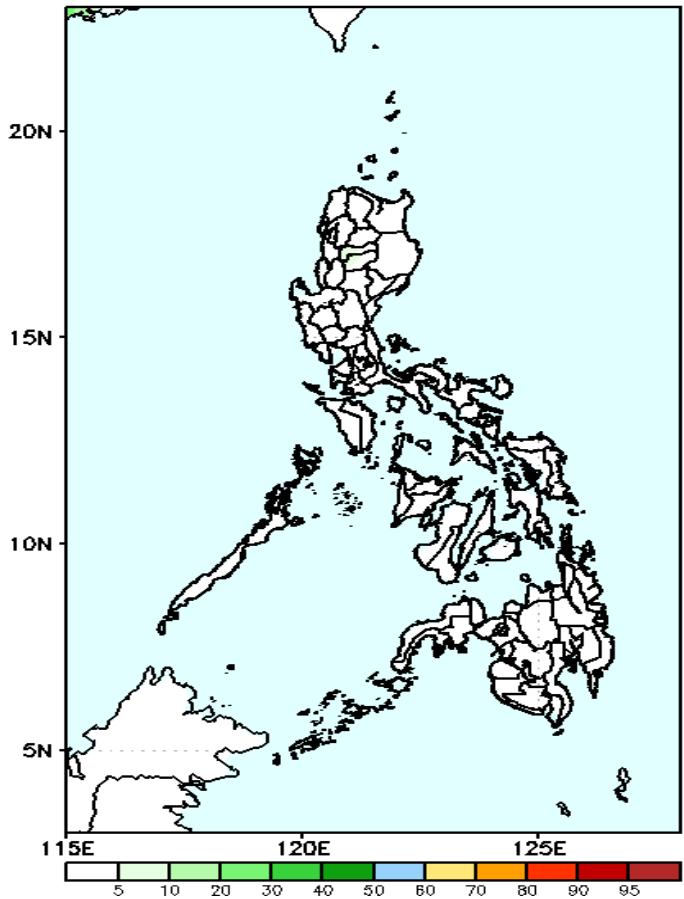
Week 1: Jun 15-21, 2022

GEFS Week-1 Exceedance Prob. > 100mm  
Valid: 20220615 – 20220621



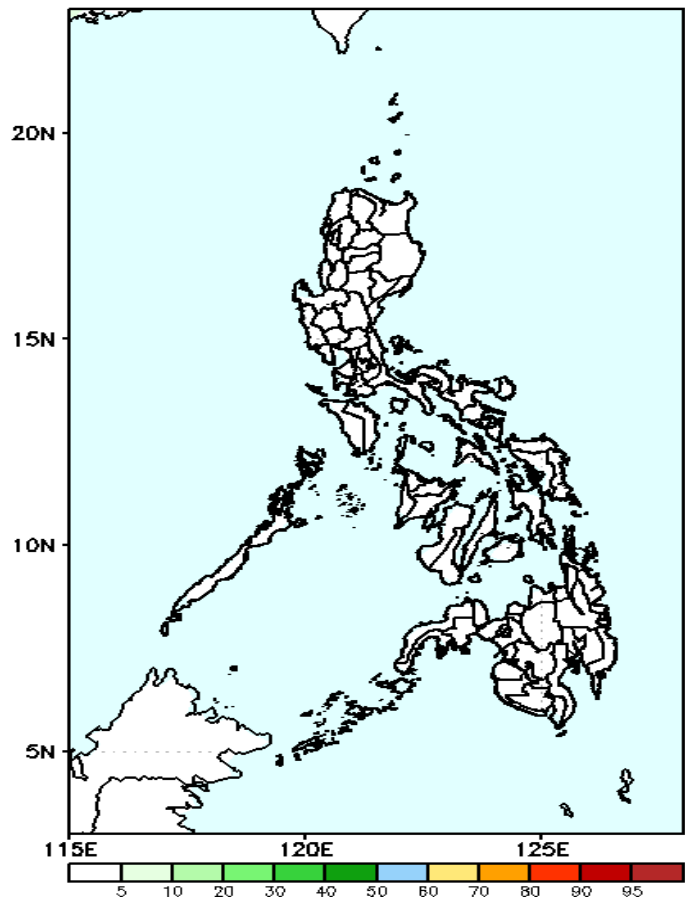
Low probability of rainfall to exceed 100mm in most parts of the country during the forecast period.

GEFS Week-1 Exceedance Prob. > 150mm  
Valid: 20220615 – 20220621



Low probability of rainfall to exceed 150mm in most parts of the country during the forecast period.

GEFS Week-1 Exceedance Prob. > 200mm  
Valid: 20220615 – 20220621

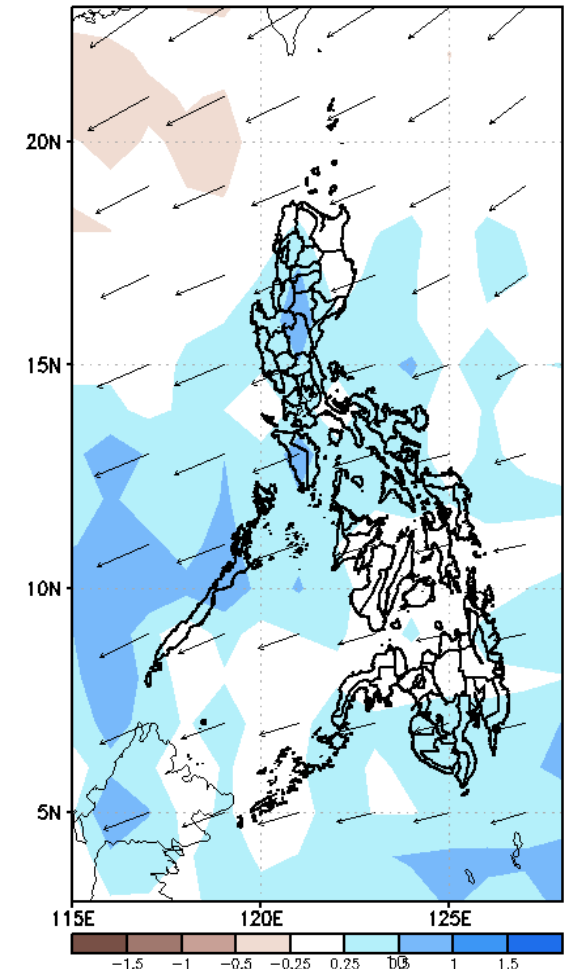
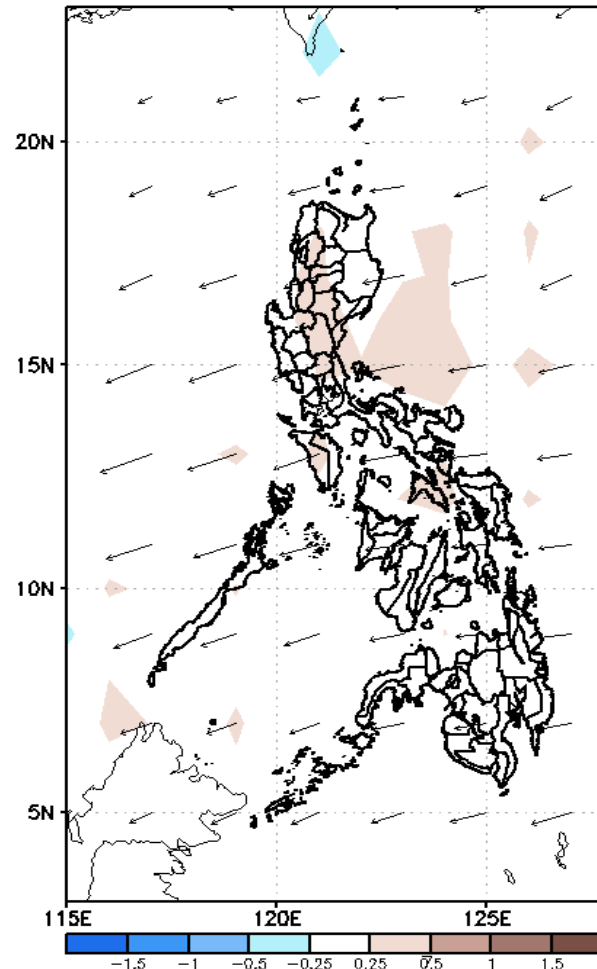
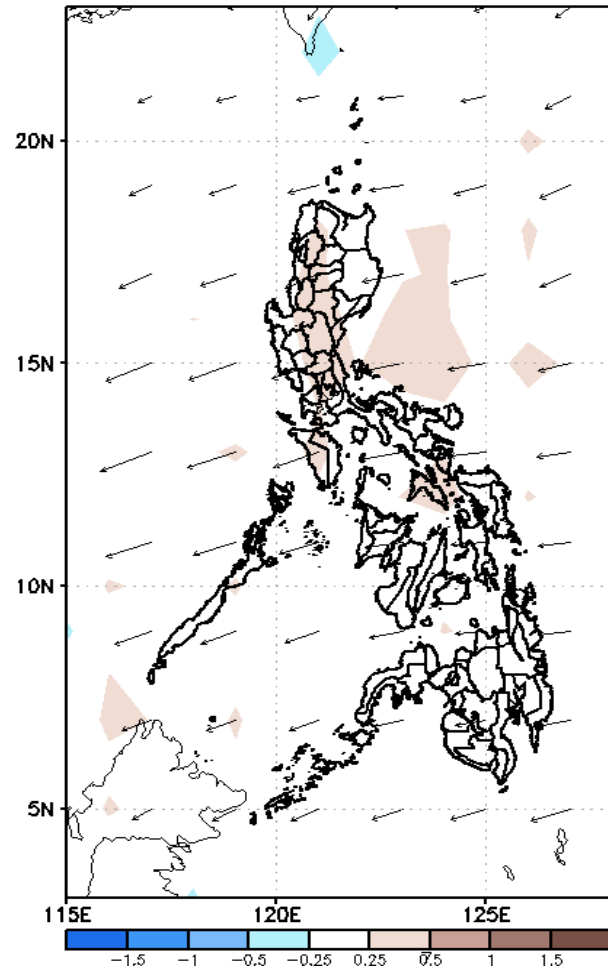


Low probability of rainfall to exceed 200mm in most parts of the country during the forecast period.

# GEFS Week-2 Forecasts: Wind Anomaly Forecast

Week 2: Jun 22-28, 2022

GEFS Week-2 850-hPa Divergence and Wind Anomaly  
Valid: 20220622 - 20220628

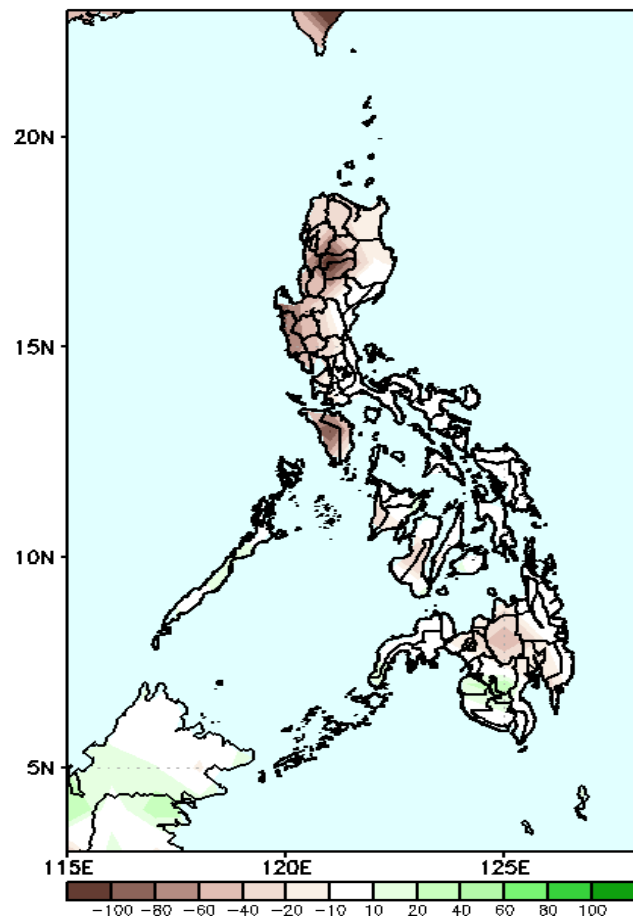


Easterlies affecting most parts of the country attributing to high likelihood of localized thunderstorms in most parts of the country during the forecast period

# Precipitation Anomaly and Exceedance Probability > 25/50 mm

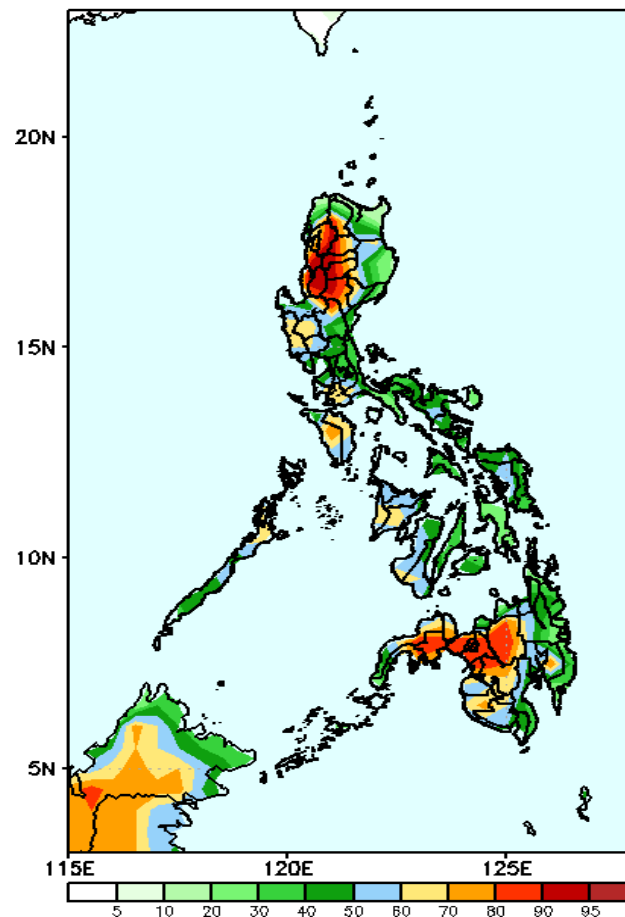
Week 2: Jun 22-28, 2022

GEFS Week-2 Precip Anomaly  
Valid: 20220622 - 20220628



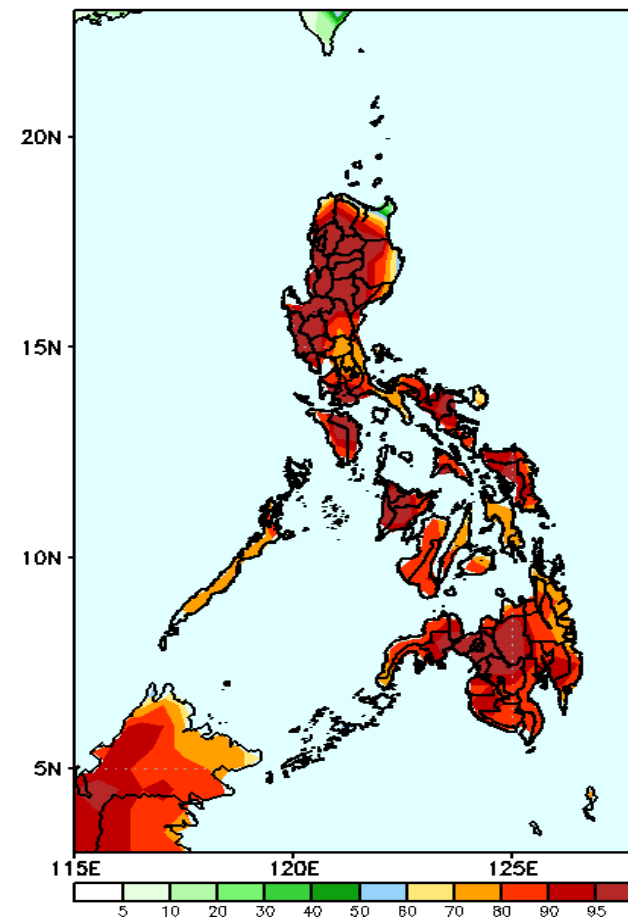
Rainfall deficit of 40-100mm is expected in most parts of Luzon and Bukidnon during the forecast period.

GEFS Week-2 Exceedance Prob. > 50mm  
Valid: 20220622 - 20220628



High probability of rainfall to exceed 25mm in most parts of the country during the forecast period.

GEFS Week-2 Exceedance Prob. > 25mm  
Valid: 20220622 - 20220628



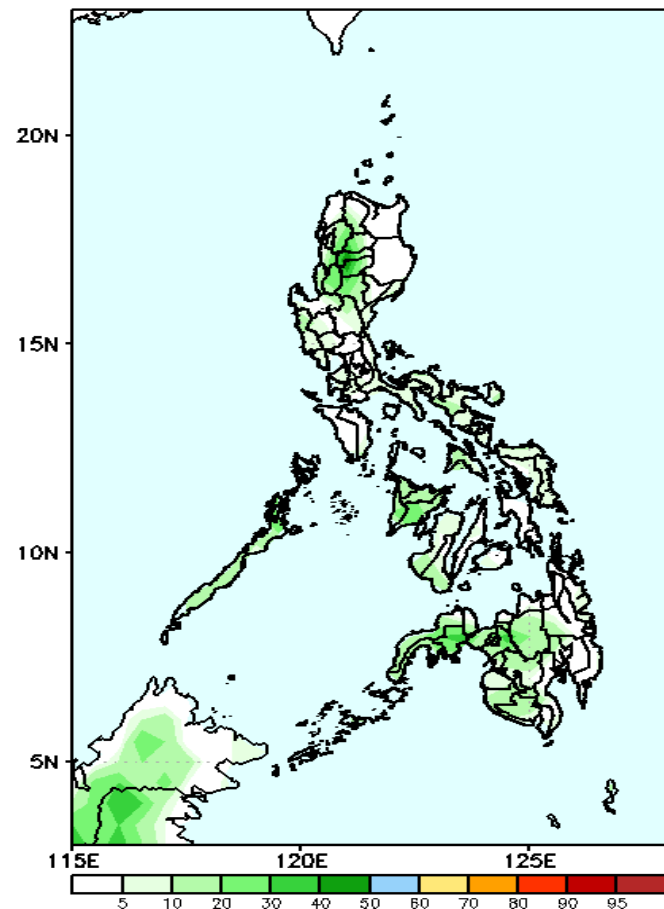
High probability of rainfall to exceed 50mm in the eastern sections of Luzon and Visayas, most parts of Cordillera Region and most parts of Western and Central Mindanao while less likely for the rest the country during the forecast period



# Exceedance Probability > 100/150/200 mm

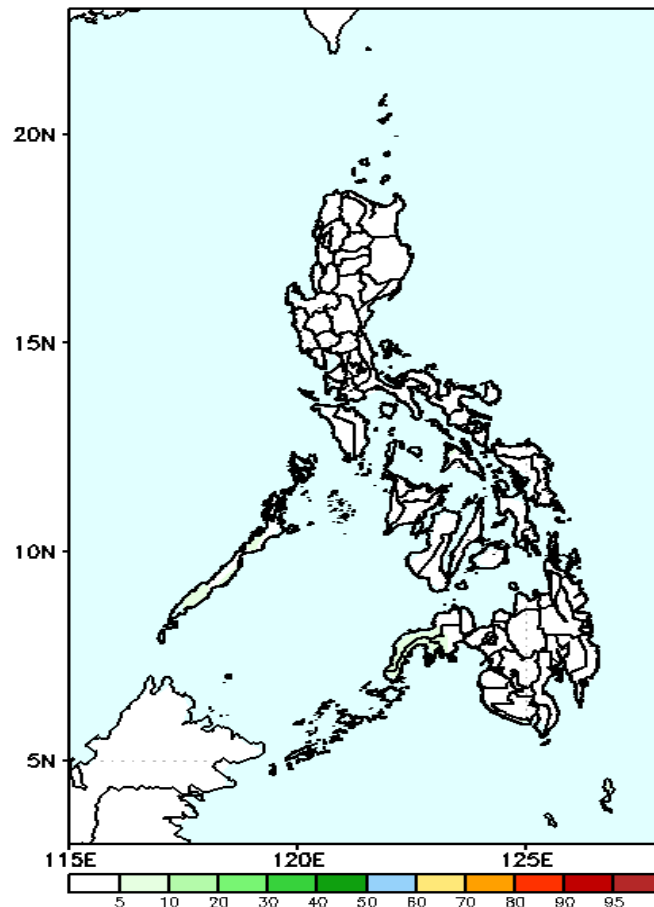
Week 2: Jun 22-28, 2022

GEFS Week-2 Exceedance Prob. > 100mm  
Valid: 20220622 - 20220628



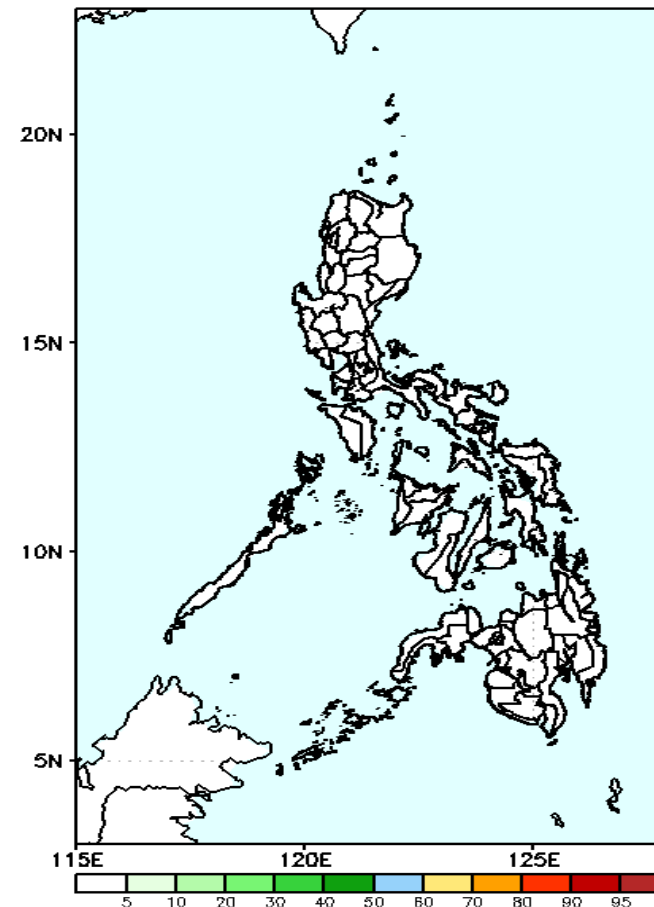
Low probability of rainfall to exceed 100mm in most parts of the country during the forecast period.

GEFS Week-2 Exceedance Prob. > 150mm  
Valid: 20220622 - 20220628



Low probability of rainfall to exceed 150mm in most parts of the country during the forecast period.

GEFS Week-2 Exceedance Prob. > 200mm  
Valid: 20220622 - 20220628



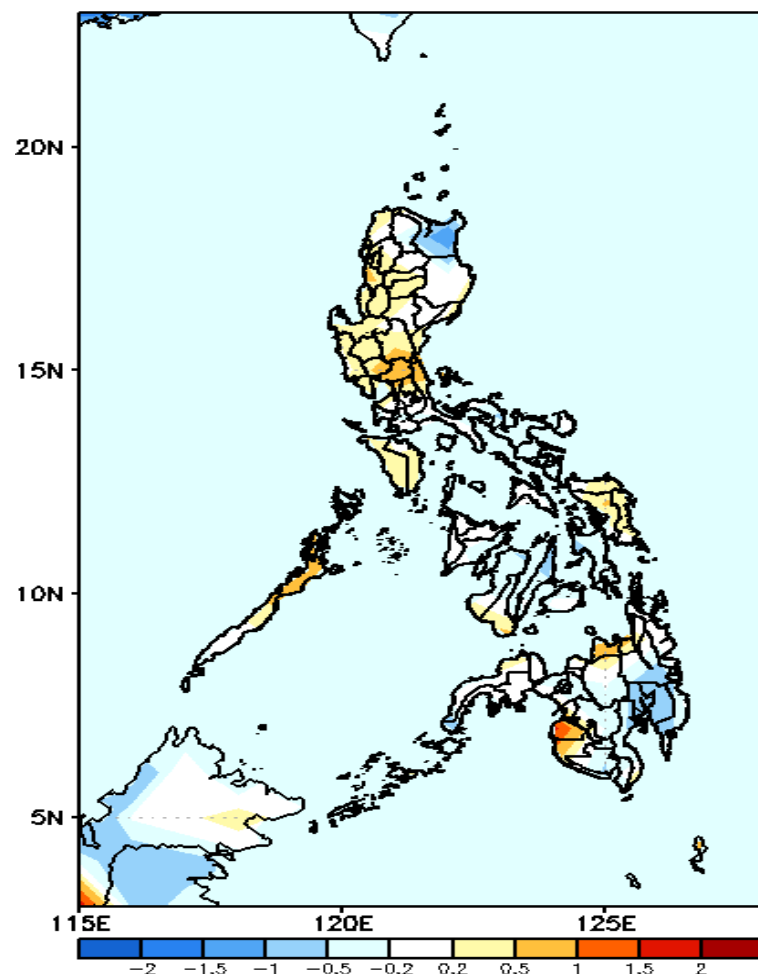
Low probability of rainfall to exceed 200mm in most parts of the country during the forecast period.

19  
SA



# GEFS Week-1 & 2 Forecasts: T2m Anomaly

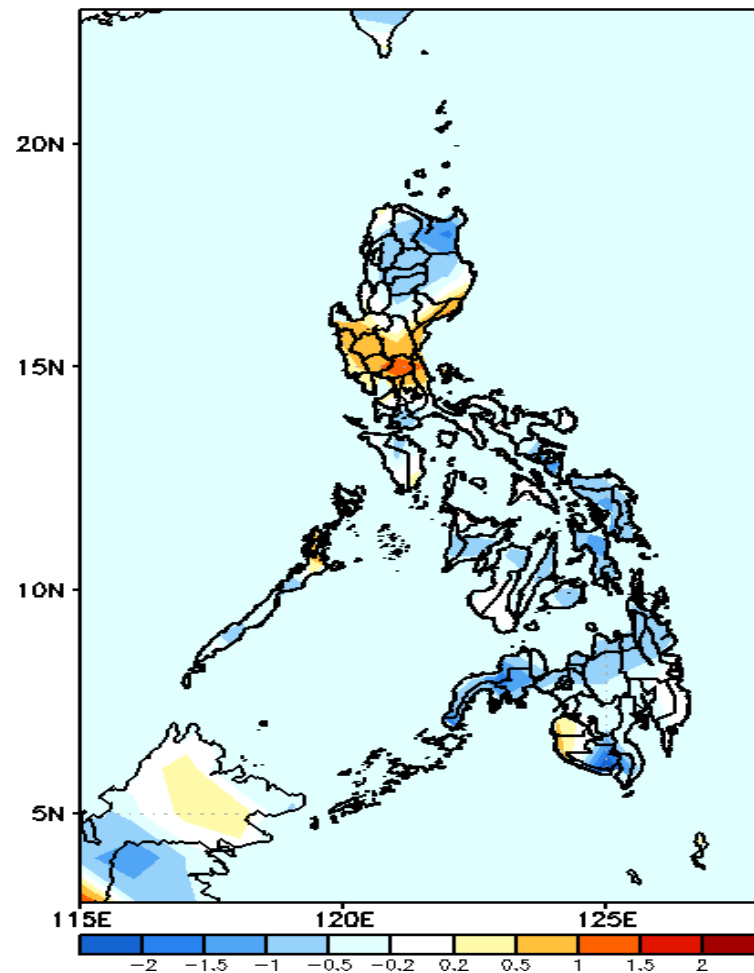
GEFS Week-1 T2m Anomaly  
Valid: 20220615 - 20220621



## 2m Temperature Week 1: Jun 15-21, 2022

Slightly cooler surface air temperature will likely experience in Apayao, Cebu and southern Mindanao while average to slightly warmer temperature for the rest of the country during the forecast period.

GEFS Week-2 T2m Anomaly  
Valid: 20220622 - 20220628



## 2m Temperature Week 2: Jun 22-28, 2022

Slightly cooler to cooler surface air temperature will likely experience in most parts of the country except in Pangasinan, Central Luzon, Maguindanao and Sultan Kudarat where average to slightly warmer temperature is more likely during the forecast period.