



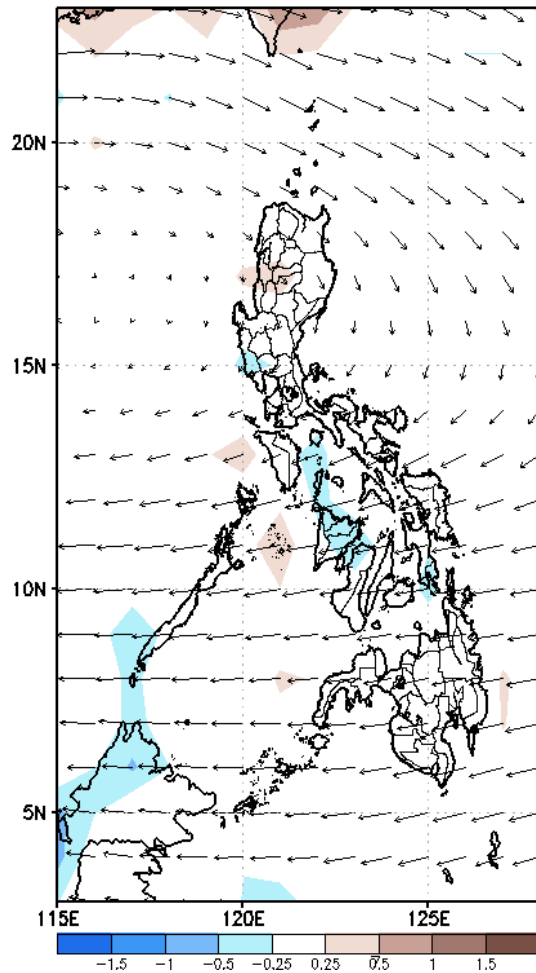
Week 1 & Week 2 Forecast for the Philippines using GEFS Model



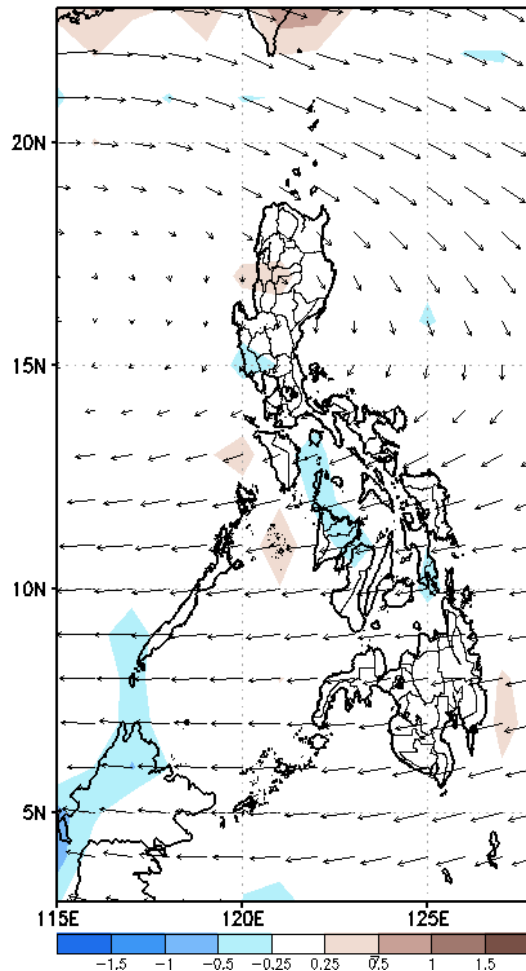
GEFS Week-1 Forecasts: Wind Anomaly Forecast

Week 1: Mar 15-21, 2023

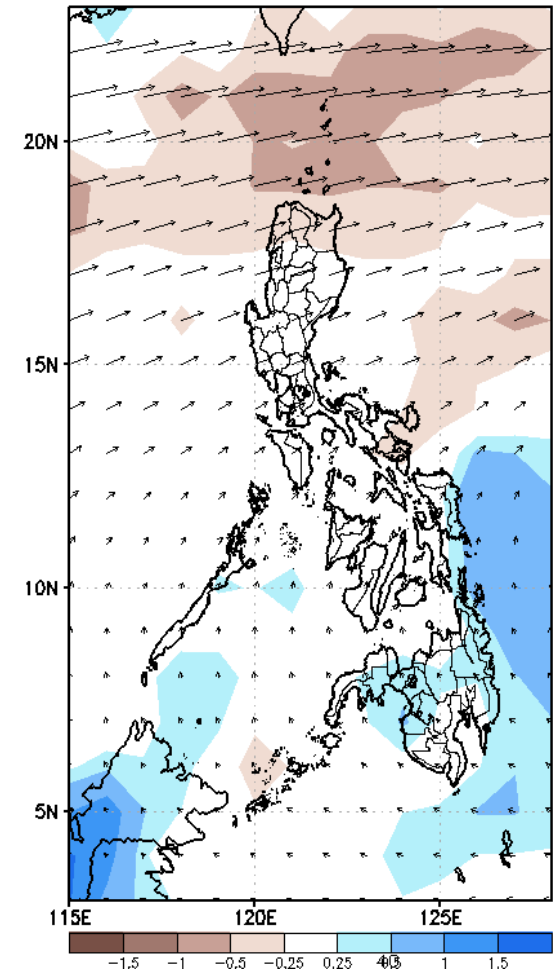
GEFS Week-1 850-hPa Divergence and Wind Anomaly
Valid: 20230315 - 20230321



GEFS Week-1 700-hPa Divergence and Wind Anomaly
Valid: 20230315 - 20230321



GEFS Week-1 200-hPa Divergence and Wind Anomaly
Valid: 20230315 - 20230321

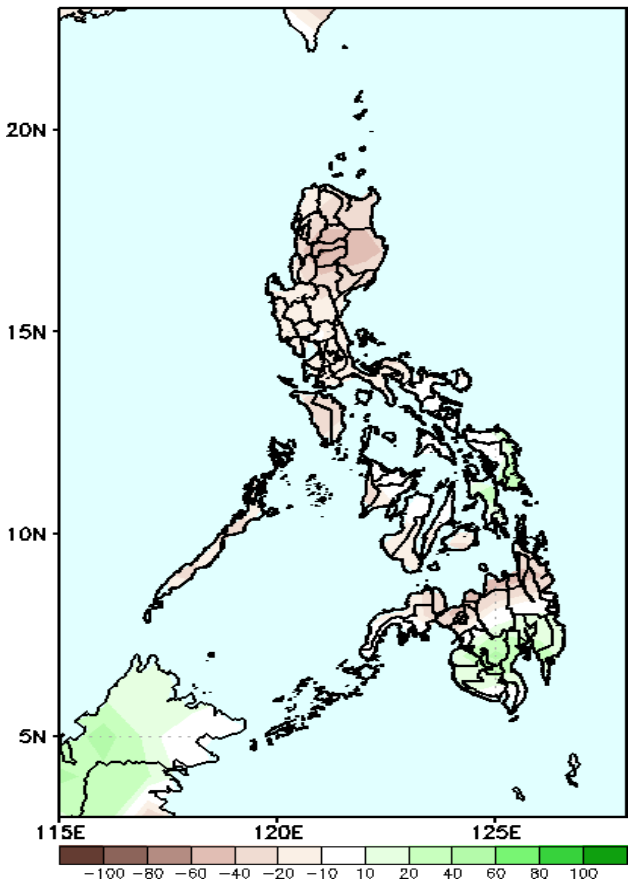


Easterlies is forecasted to affect most parts of the country during the forecast period.

Precipitation Anomaly and Exceedance Probability > 25/50 mm

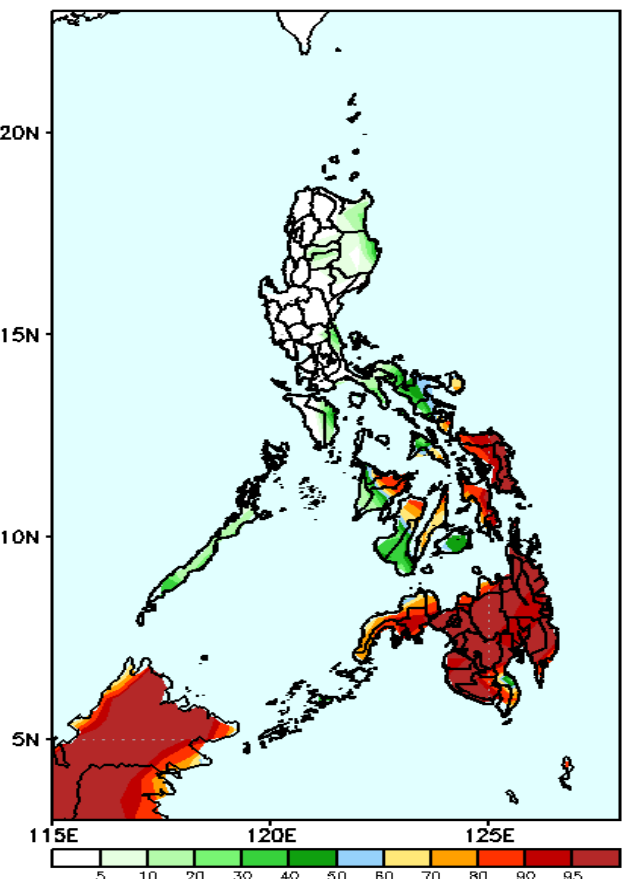
Week 1: Mar 15-21, 2023

GEFS Week-1 Precip Anomaly
Valid: 20230315 - 20230321



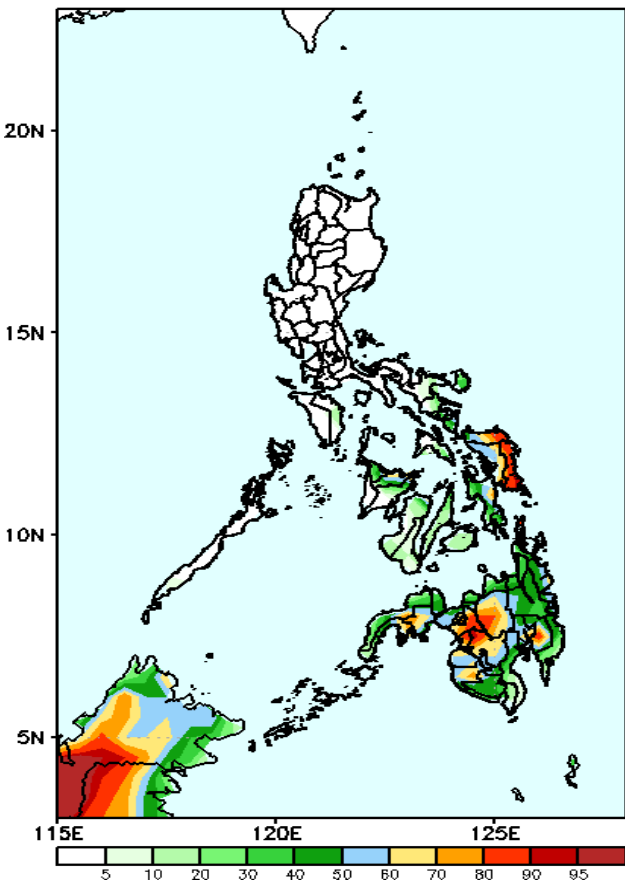
Rainfall deficit of 20-60mm is expected in most parts of Luzon, Visayas and northern Mindanao while increase of rainfall of 20-60mm for the rest of Mindanao during the forecast period.

GEFS Week-1 Exceedance Prob. > 25mm
Valid: 20230315 - 20230321



High to a very high probability of rainfall to exceed 25mm over Eastern Visayas, Cebu, Mindanao and portions of Western Visayas, while low probability over the rest of the country.

GEFS Week-1 Exceedance Prob. > 50mm
Valid: 20230315 - 20230321

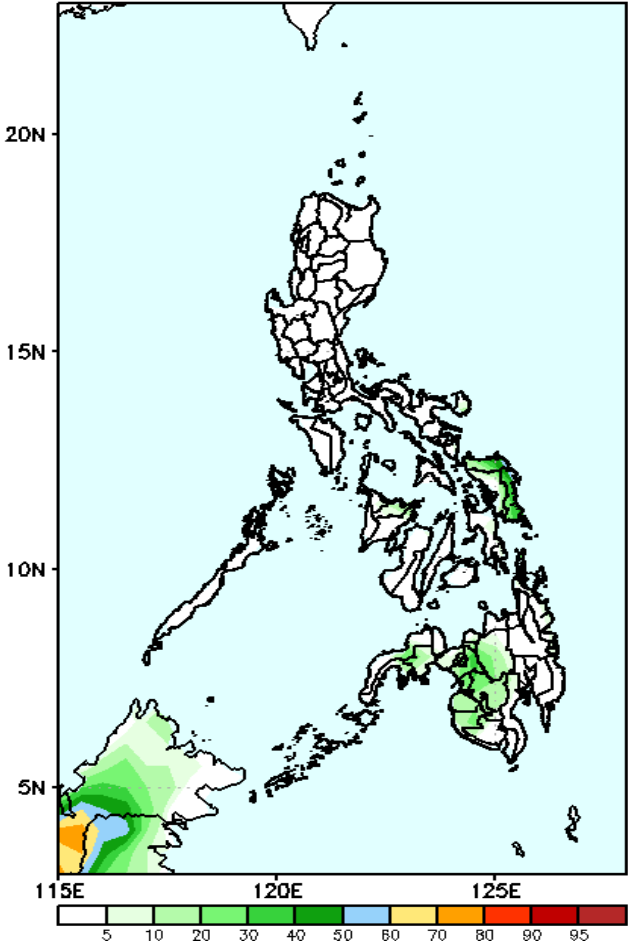


Moderate to a high probability of rainfall to exceed 50mm in most parts of Eastern Visayas and portions of Central and Western Mindanao, while low probability over the rest of the country.

Exceedance Probability > 100/150/200 mm

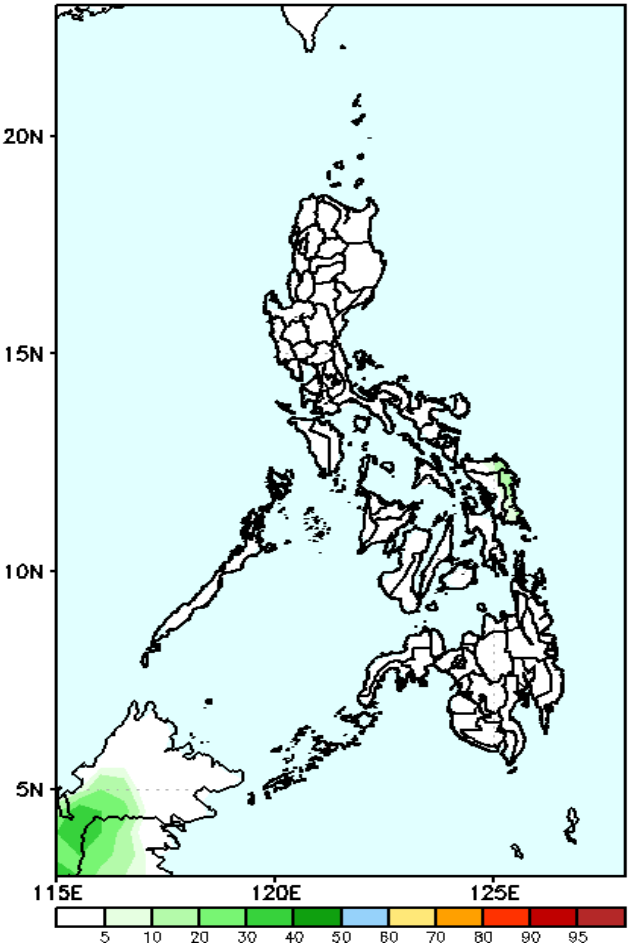
Week 1: Mar 15-21, 2023

GEFS Week-1 Exceedance Prob. > 100mm
Valid: 20230315 – 20230321



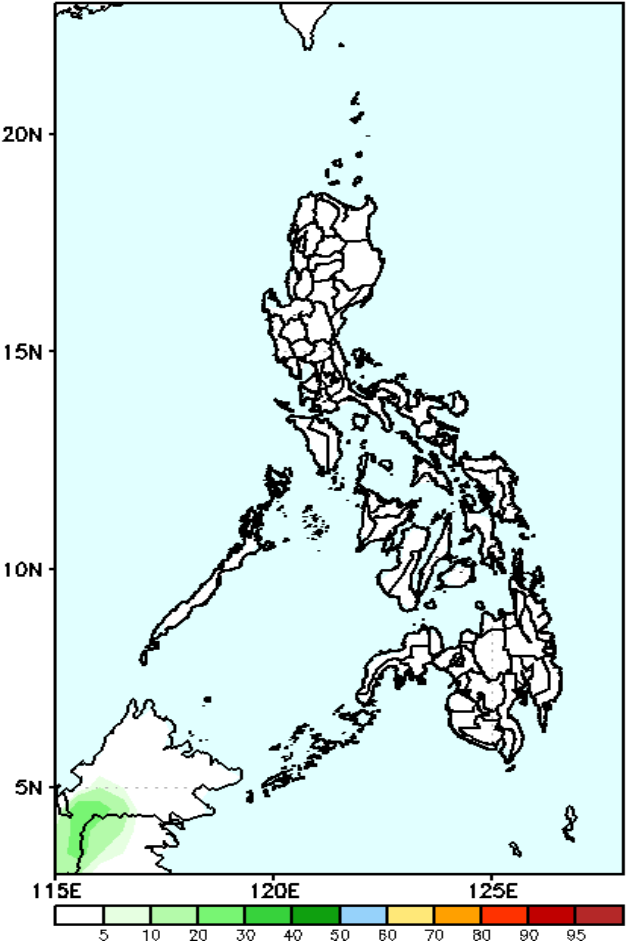
Low probability of rainfall to exceed 100mm in most parts of the country during the forecast period.

GEFS Week-1 Exceedance Prob. > 150mm
Valid: 20230315 – 20230321



Low probability of rainfall to exceed 150mm in most parts of the country during the forecast period.

GEFS Week-1 Exceedance Prob. > 200mm
Valid: 20230315 – 20230321

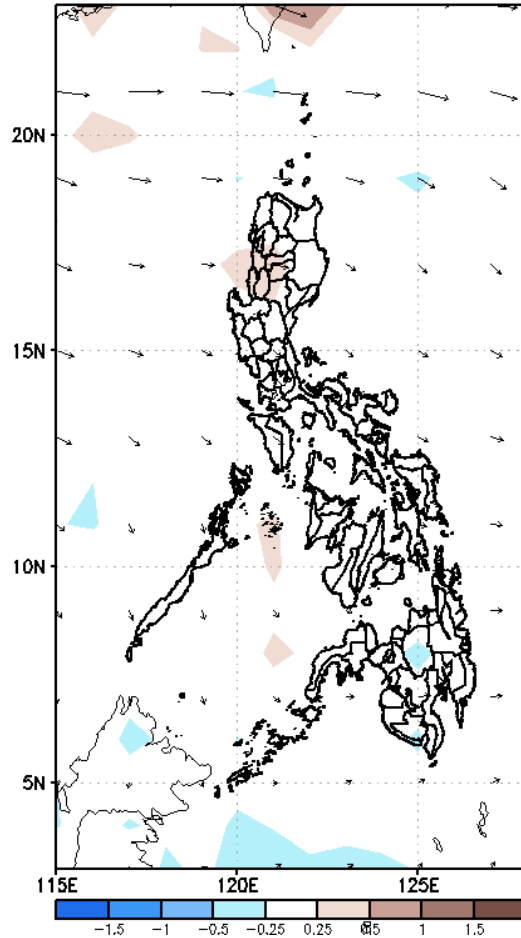


Low probability of rainfall to exceed 200mm in most parts of the country during the forecast period.

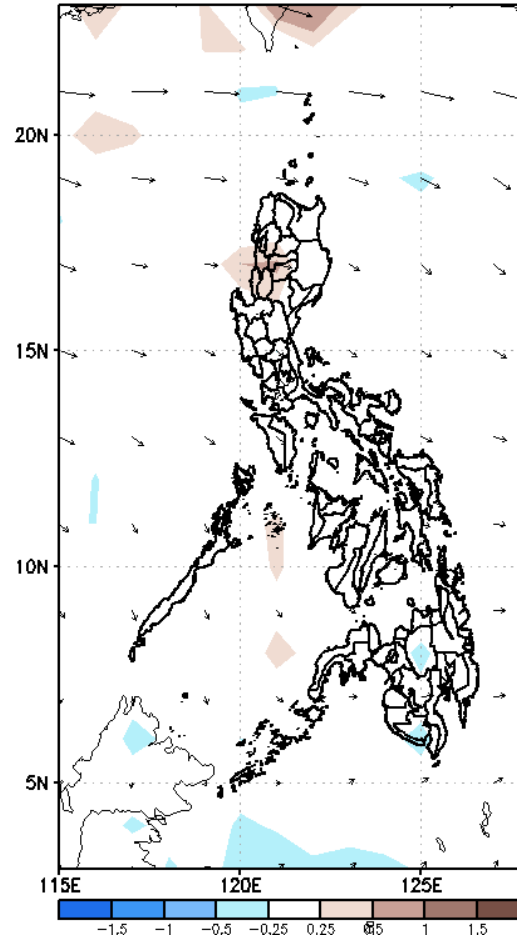
GEFS Week-2 Forecasts: Wind Anomaly Forecast

Week 2: Mar 22-28, 2023

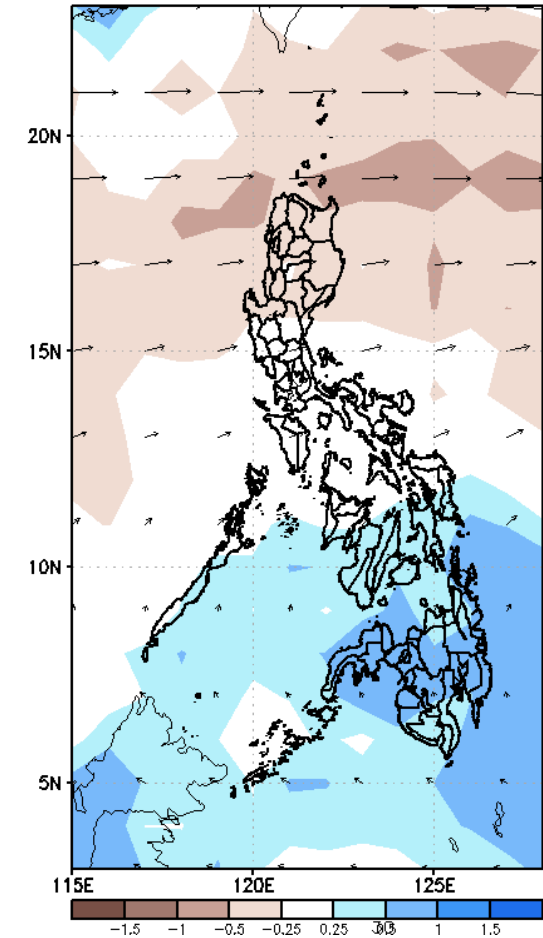
GEFS Week-2 850-hPa Divergence and Wind Anomaly
Valid: 20230322 – 20230328



GEFS Week-2 700-hPa Divergence and Wind Anomaly
Valid: 20230322 – 20230328



GEFS week-2 200-hPa Divergence and Wind Anomaly
Valid: 20230322 – 20230328

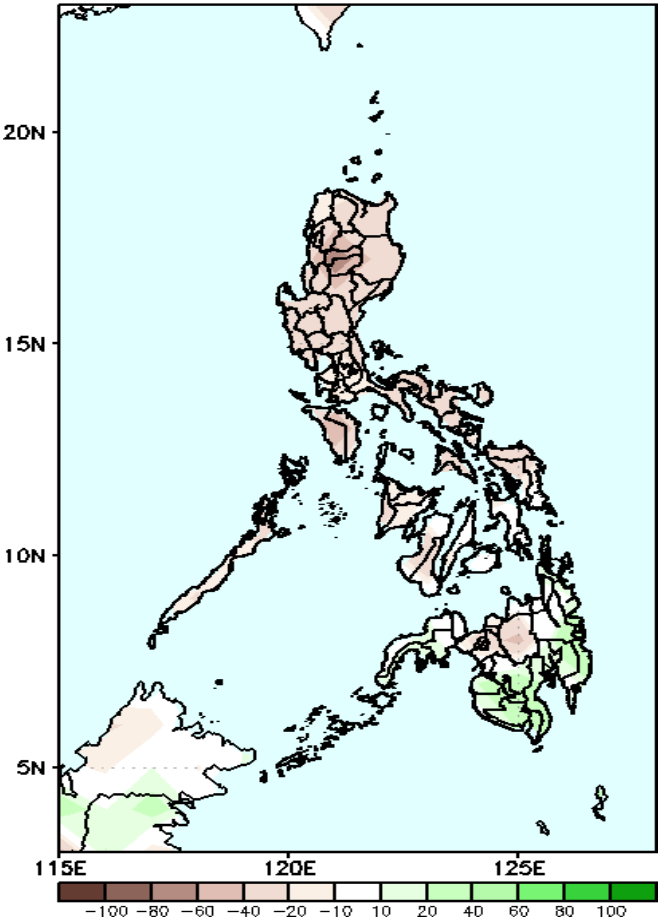


Easterlies is forecasted to affect most parts of the country during the forecast period.

Precipitation Anomaly and Exceedance Probability > 25/50 mm

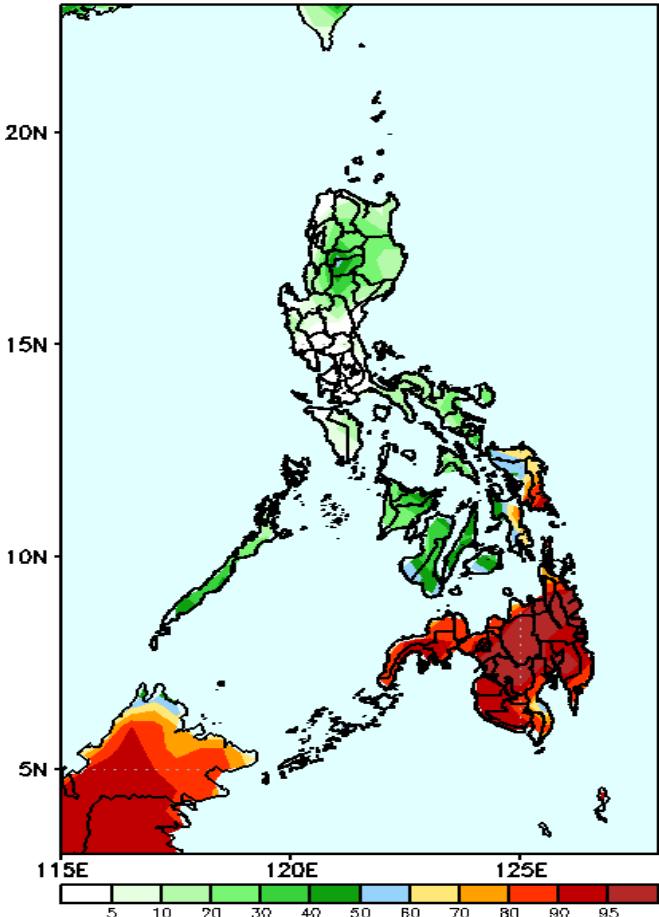
Week 2: Mar 22-28, 2023

GEFS Week-2 Precip Anomaly
Valid: 20230322 – 20230328



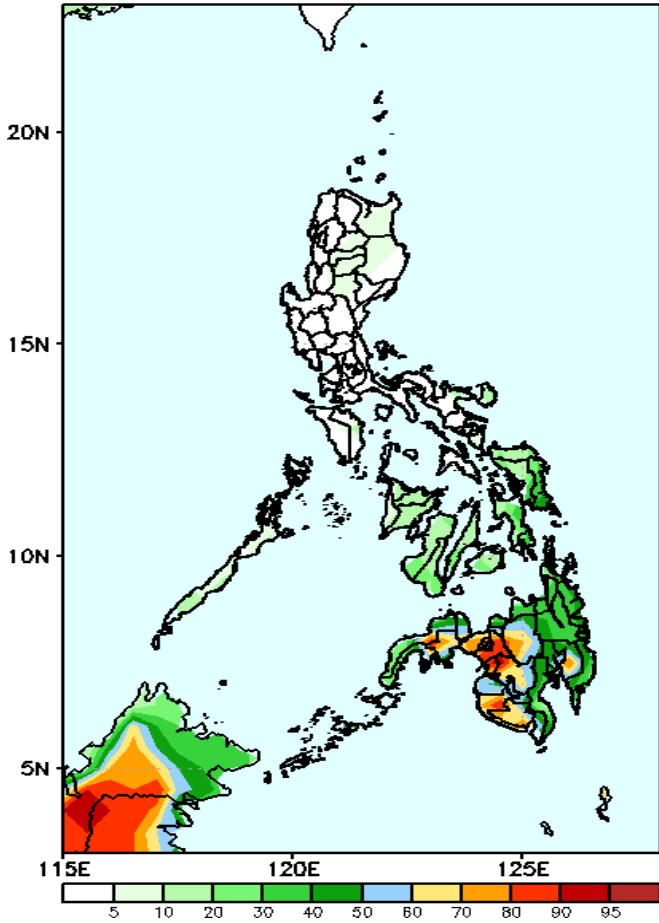
Rainfall deficit of 20-60mm is expected in most parts of Luzon, Visayas and northern Mindanao while increase of rainfall of 20-60mm for the rest of Mindanao during the forecast period.

GEFS Week-2 Exceedance Prob. > 25mm
Valid: 20230322 – 20230328



High to a very high probability of rainfall to exceed 25mm over Mindanao and portions of Eastern Visayas, while low probability over the rest of the country.

GEFS Week-2 Exceedance Prob. > 50mm
Valid: 20230322 – 20230328

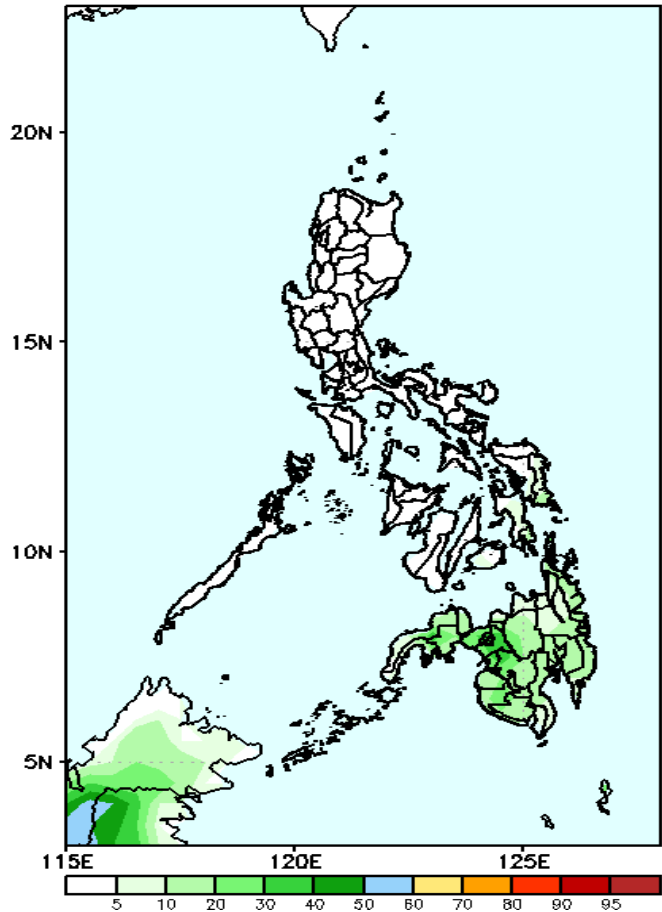


Moderate to a high probability of rainfall to exceed 50mm in portions of Western and Central part of Mindanao including portions of Zamboanga peninsula while low chance over the rest of the country.

Exceedance Probability > 100/150/200 mm

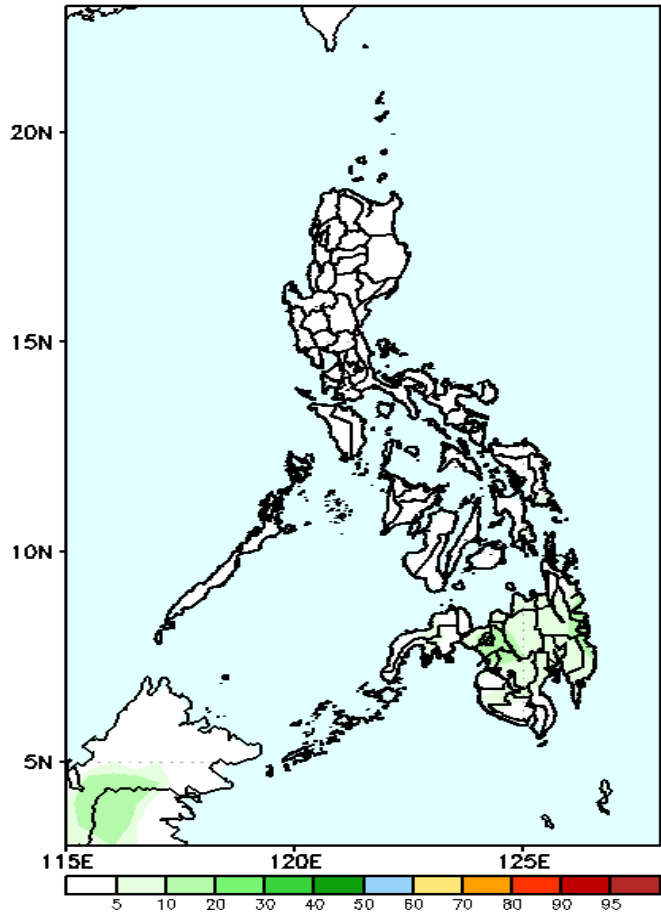
Week 2: Mar 22-28, 2023

GEFS Week-2 Exceedance Prob. > 100mm
Valid: 20230322 – 20230328



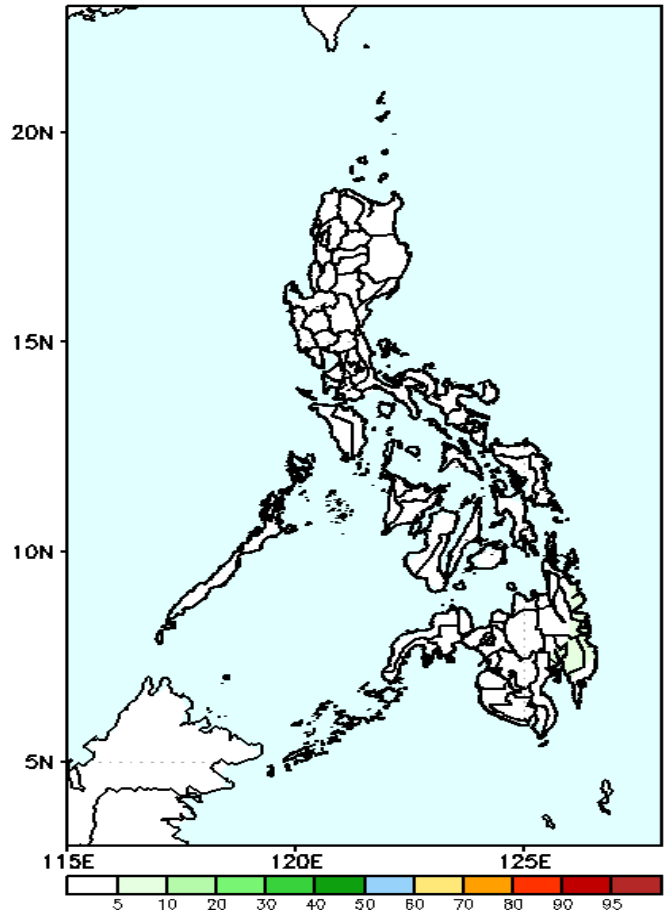
Low probability of rainfall to exceed 100mm in most parts of the country during the forecast period.

GEFS Week-2 Exceedance Prob. > 150mm
Valid: 20230322 – 20230328



Low probability of rainfall to exceed 150mm in most parts of the country during the forecast period.

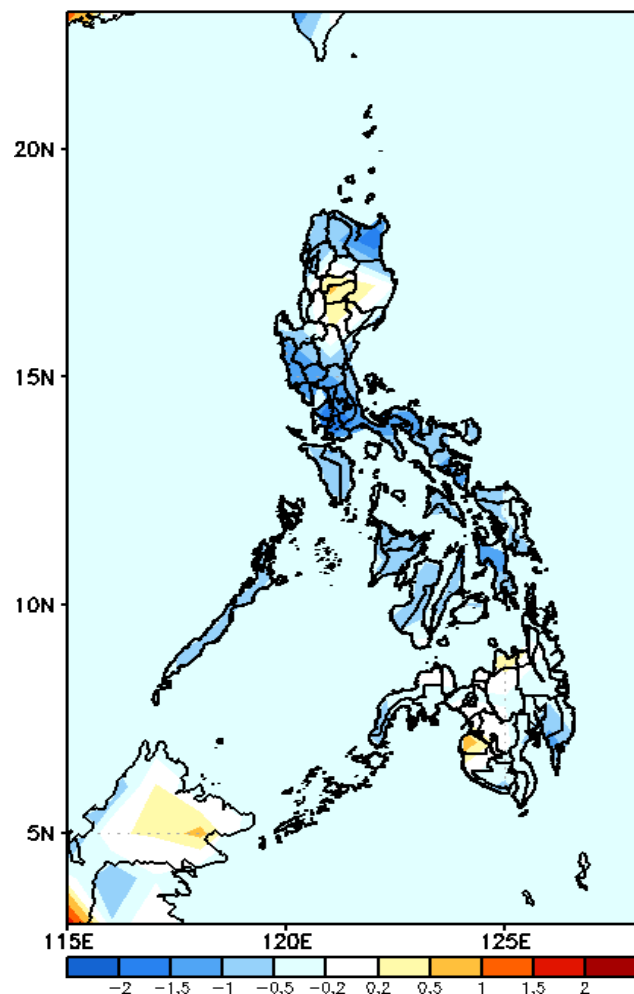
GEFS Week-2 Exceedance Prob. > 200mm
Valid: 20230322 – 20230328



Low probability of rainfall to exceed 200mm in most parts of the country during the forecast period.

GEFS Week-1 & 2 Forecasts: T2m Anomaly

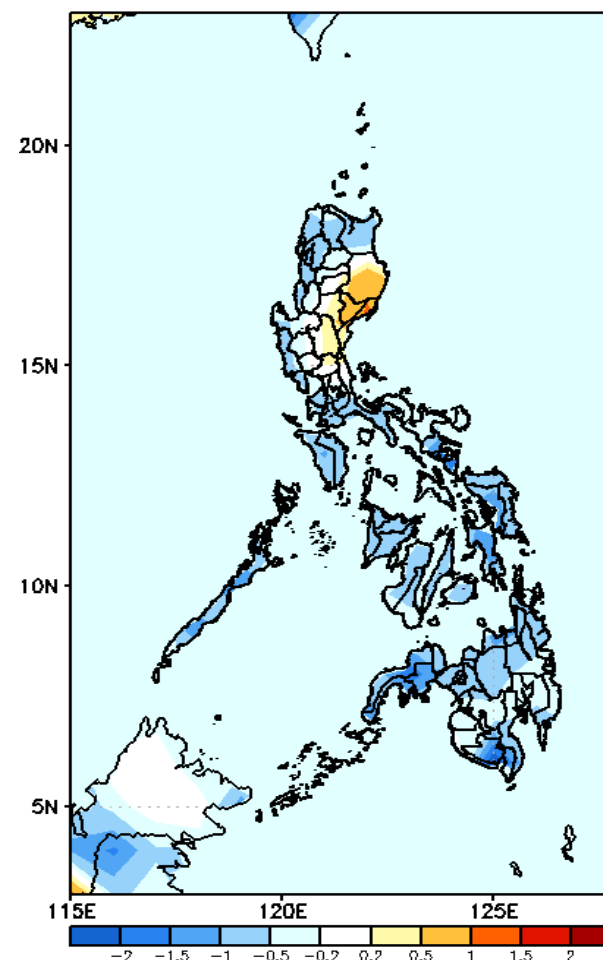
GEFS Week-1 T2m Anomaly
Valid: 20230315 - 20230321



2m Temperature Week 1: Mar 15-21, 2023

Slightly cooler to cooler than average surface air temperature will likely experience in most parts of the country except Mt. Province, Ifugao, Nueva Vizcaya, Misamis Oriental and Maguindanao were slightly warmer than average surface air temperature will be likely during the forecast period.

GEFS Week-2 T2m Anomaly
Valid: 20230322 - 20230328



2m Temperature Week 2: Mar 22-28, 2023

Slightly cooler to cooler than average surface air temperature will likely experience in most parts of the country except Isabela, Quirino, Aurora, Nueva Ecija and Bulacan were slightly warmer than average surface air temperature will be likely during the forecast period.