



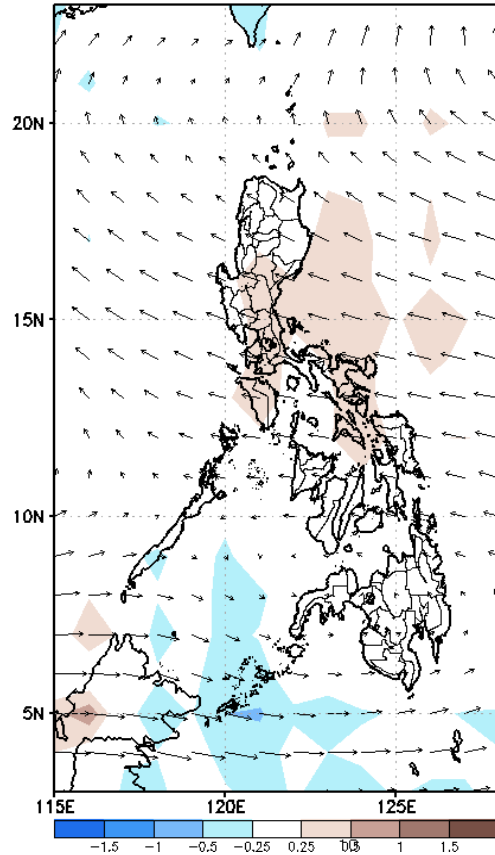
Week 1 & Week 2 Forecast for the Philippines using GEFS Model



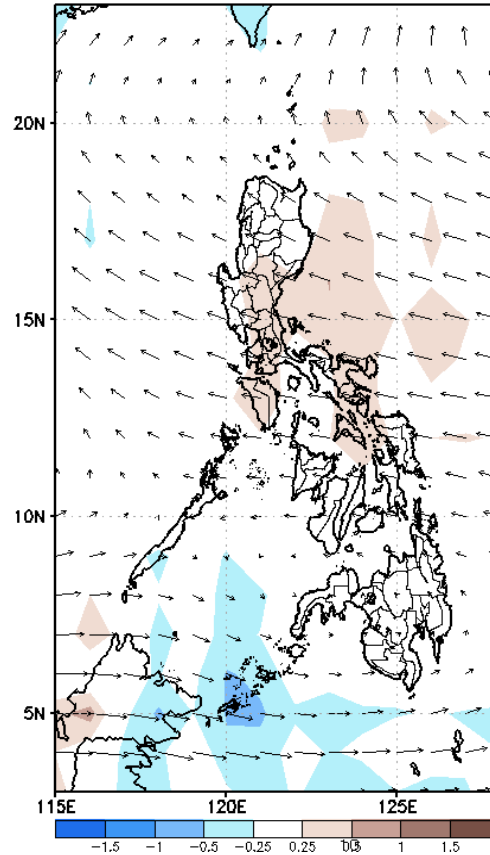
GEFS Week-1 Forecasts: Wind Anomaly Forecast

Week 1: Jul 15 - Jul 21, 2022

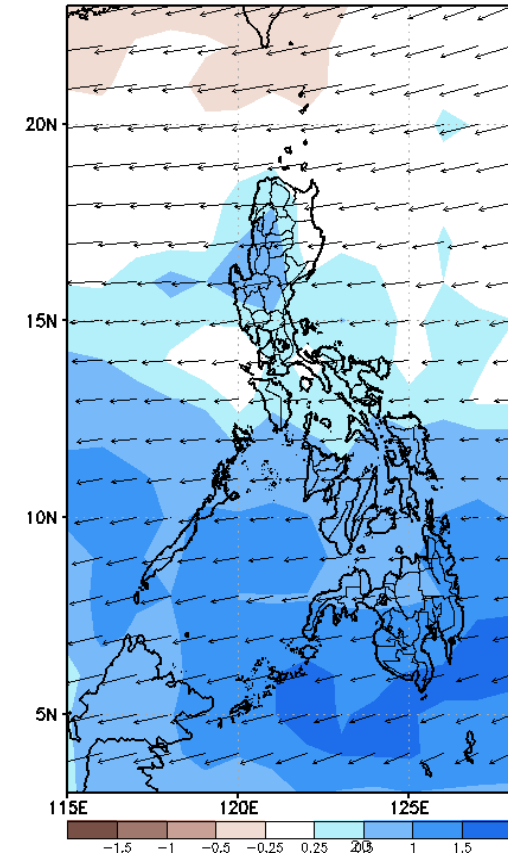
GEFS Week-1 850-hPa Divergence and Wind Anomaly
Valid: 20220715 - 20220721



GEFS Week-1 700-hPa Divergence and Wind Anomaly
Valid: 20220715 - 20220721



GEFS Week-1 200-hPa Divergence and Wind Anomaly
Valid: 20220715 - 20220721

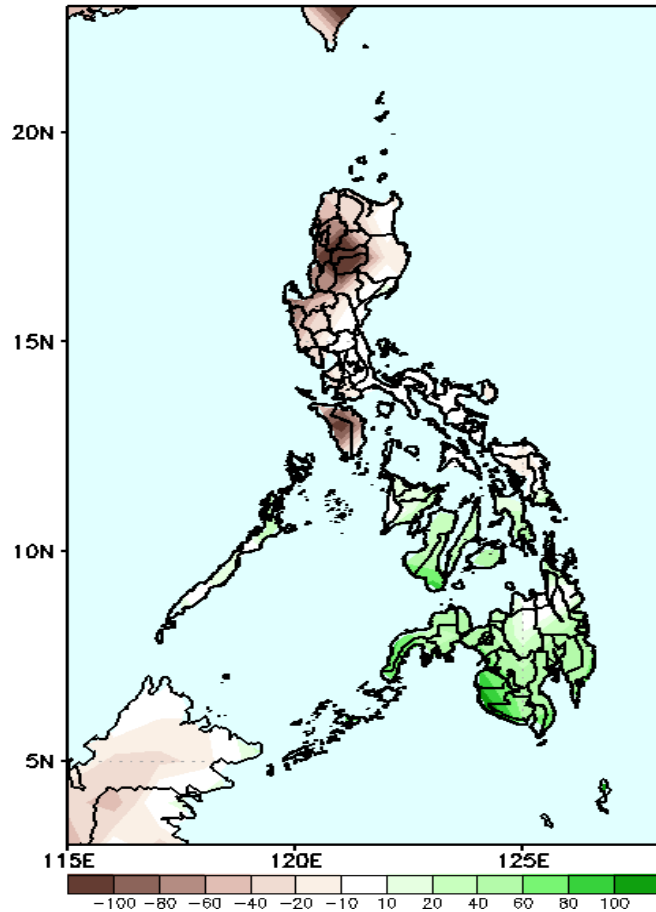


Westerly windlow affecting Southern Visayas and Mindanao while Easterlies affecting most parts pf Luzon and Eastern Visayas during the forecast period.

Precipitation Anomaly and Exceedance Probability > 25/50 mm

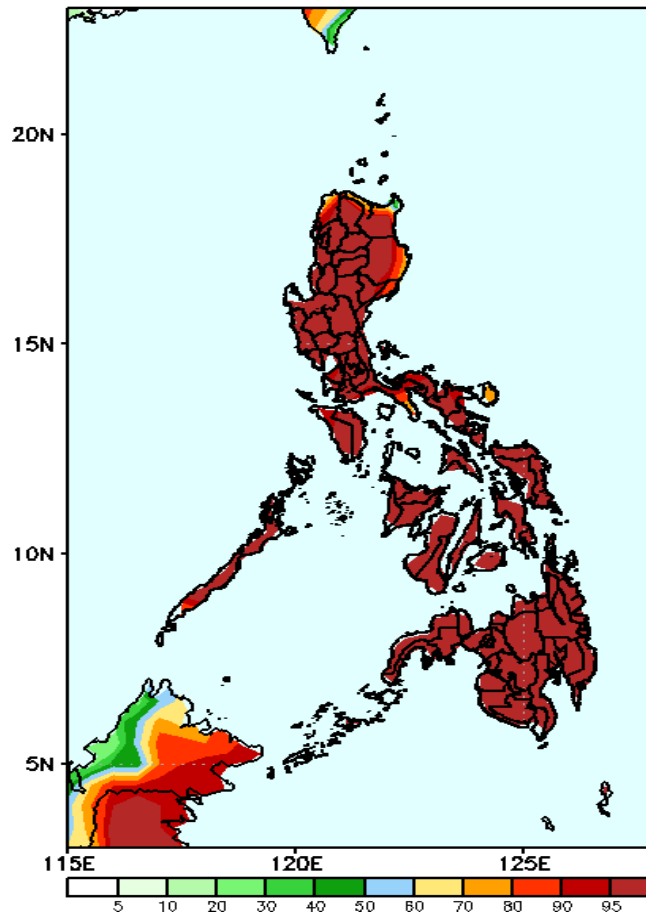
Week 1: Jul 15 - Jul 21, 2022

GEFS Week-1 Precip Anomaly
Valid: 20220715 - 20220721



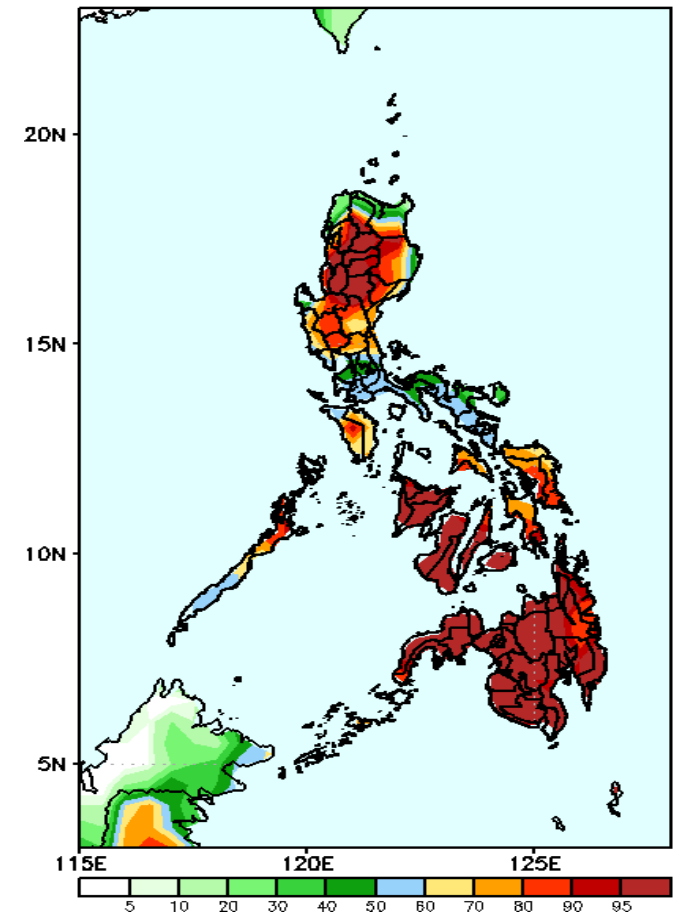
40 – 100mm rainfall deficit will be likely in most parts of Luzon while an increase of rainfall of 40 – 80mm is expected for the rest of the country during the forecast period .

GEFS Week-1 Exceedance Prob. > 25mm
Valid: 20220715 - 20220721



High probability of rainfall to exceed 25mm in most parts of the country during the forecast period.

GEFS Week-1 Exceedance Prob. > 50mm
Valid: 20220715 - 20220721

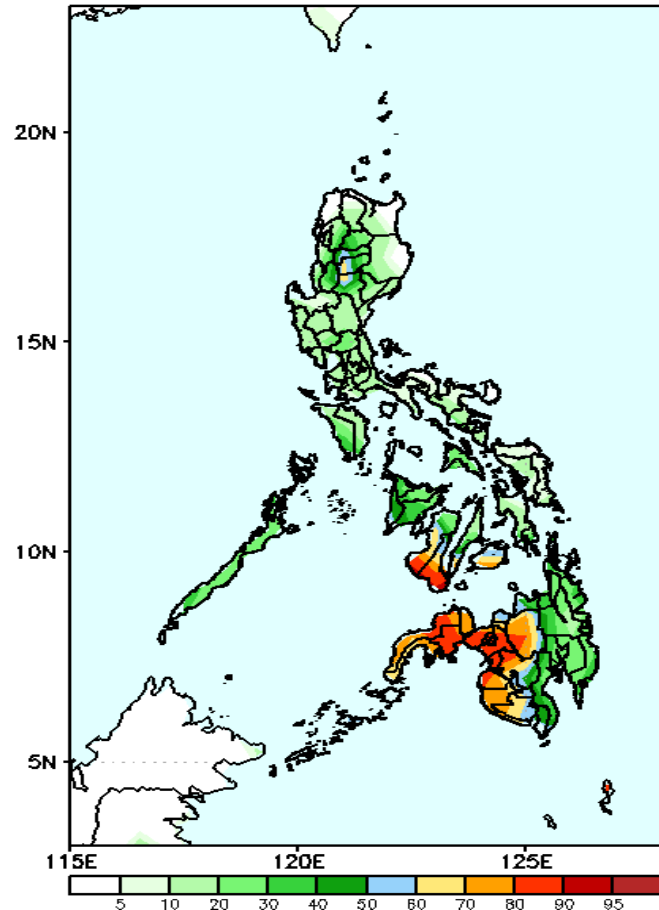


High probability of rainfall to exceed 50mm in most parts Northern and Central Luzon, Western and central Visayas and most parts of Mindanao while less likely for the rest of the country during the forecast period.

Exceedance Probability > 100/150/200 mm

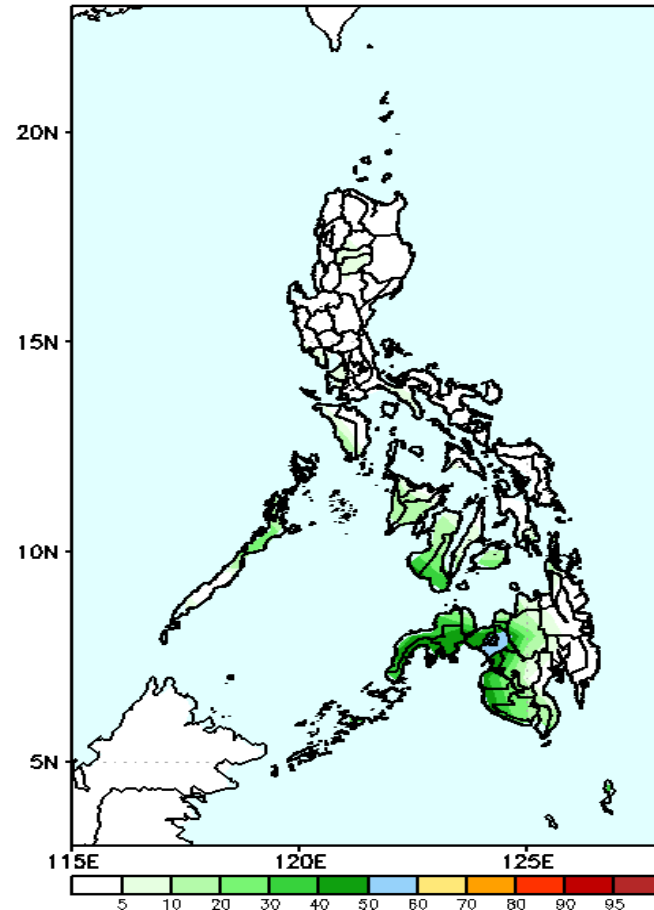
Week 1: Jul 15 - Jul 21, 2022

GEFS Week-1 Exceedance Prob. > 100mm
Valid: 20220715 - 20220721



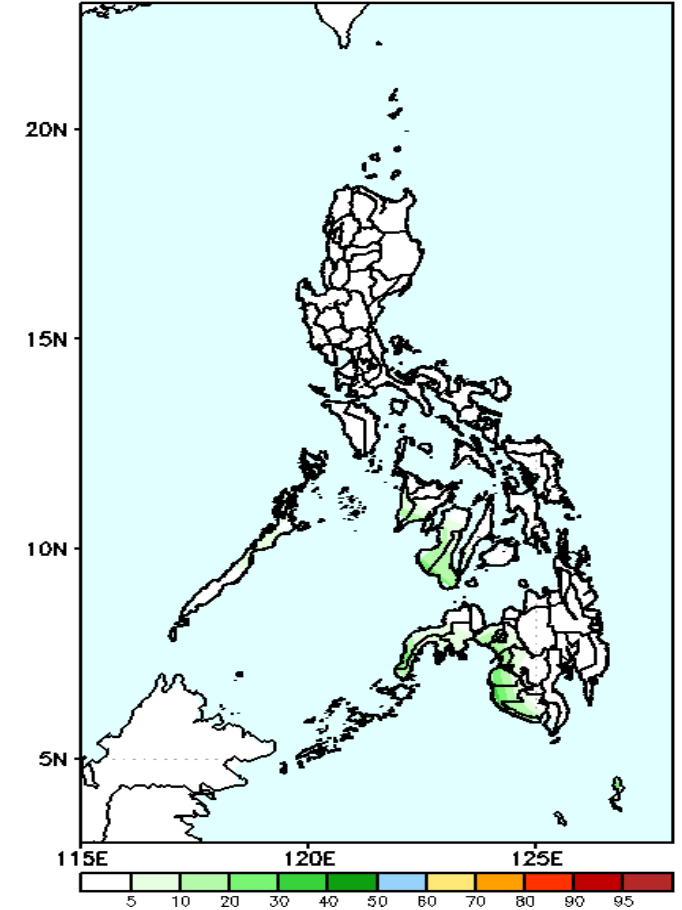
High probability of rainfall to exceed 100mm in most parts of Negros provinces, Bohol and Western and Central Mindanao while less likely for the rest of the country during the forecast period.

GEFS Week-1 Exceedance Prob. > 150mm
Valid: 20220715 - 20220721



Low probability of rainfall to exceed 150mm in most parts of the country during the forecast period.

GEFS Week-1 Exceedance Prob. > 200mm
Valid: 20220715 - 20220721



Low probability of rainfall to exceed 200mm in most parts of the country during the forecast period.



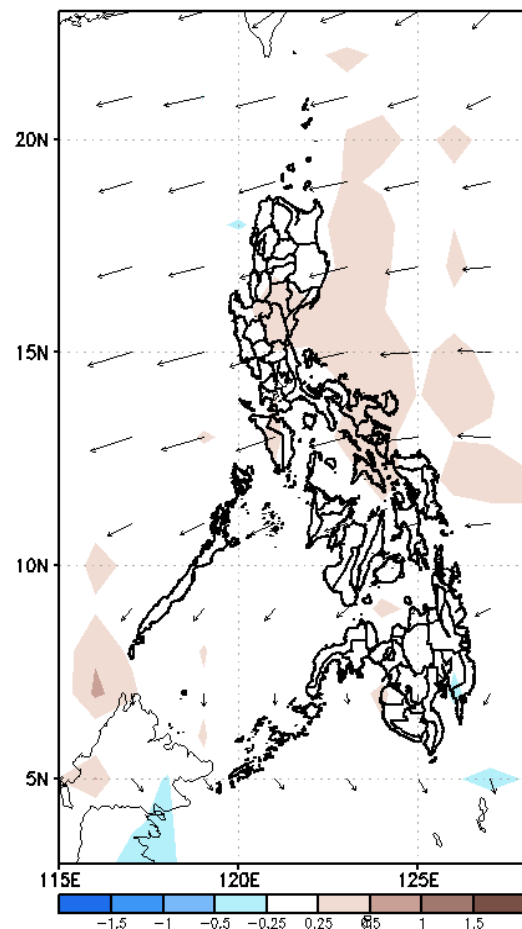
long
ASA



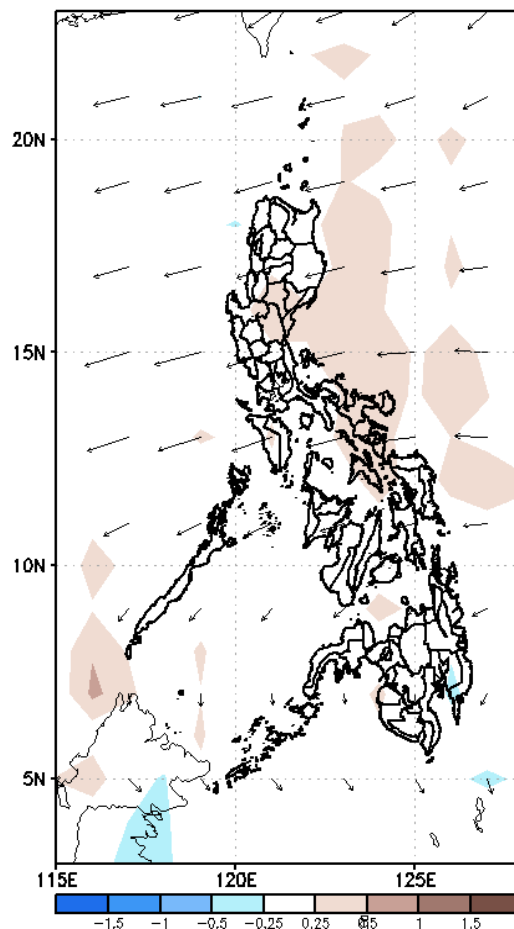
GEFS Week-2 Forecasts: Wind Anomaly Forecast

Week 2: Jul 22 - Jul 28, 2022

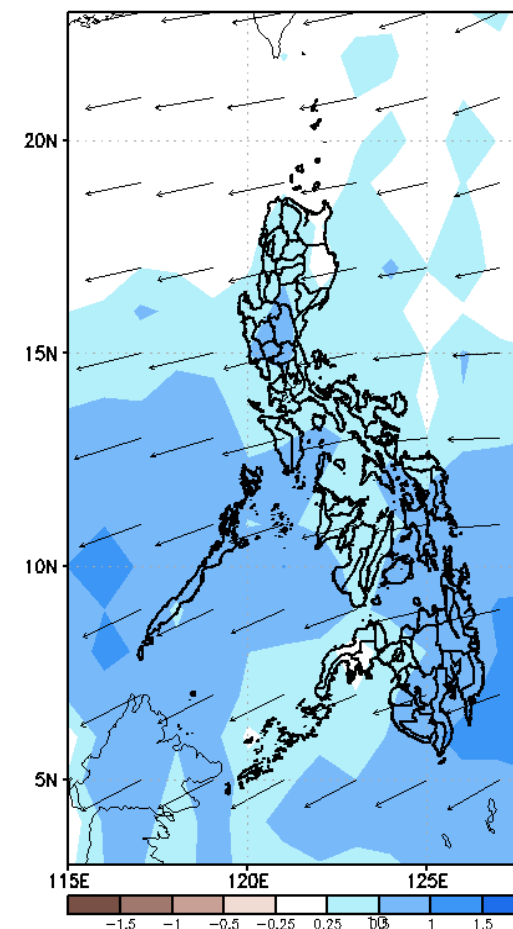
GEFS Week-2 850-hPa Divergence and Wind Anomaly
Valid: 20220722 - 20220728



GEFS Week-2 700-hPa Divergence and Wind Anomaly
Valid: 20220722 - 20220728



GEFS week-2 200-hPa Divergence and Wind Anomaly
Valid: 20220722 - 20220728

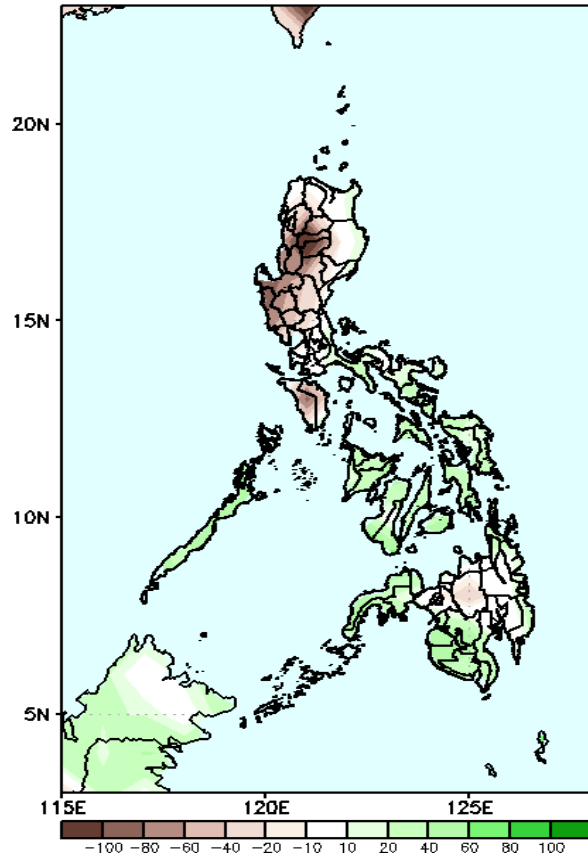


Easterlies affecting most parts of the country during the forecast period.

Precipitation Anomaly and Exceedance Probability > 25/50 mm

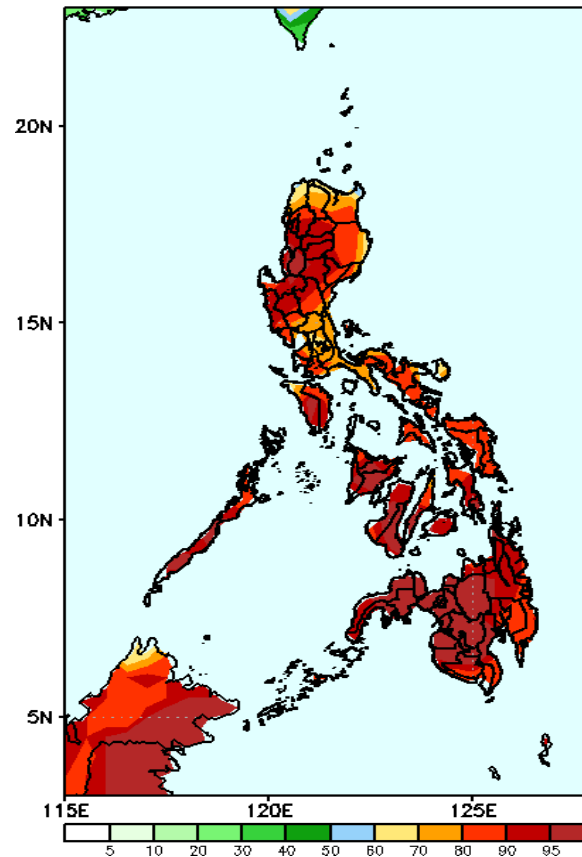
Week 2: Jul 22 - Jul 28, 2022

GEFS Week-2 Precip. Anomaly
Valid: 20220722 - 20220728



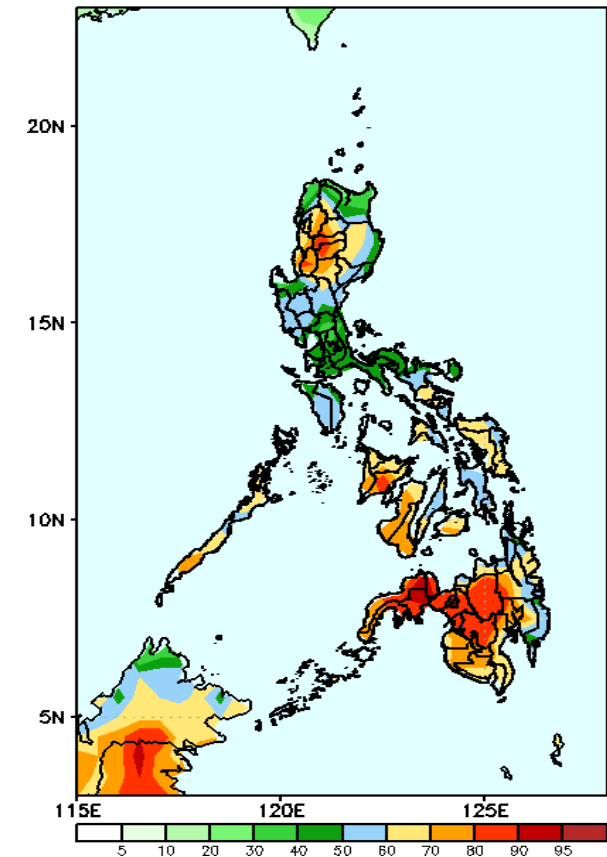
40 – 80mm rainfall deficit will be likely in most parts of Luzon (except Bicol region and Palawan) and most parts of Northern Mindanao while an increase of rainfall of 20 – 60mm is expected for the rest of the country during the forecast period.

GEFS Week-2 Exceedance Prob. > 25mm
Valid: 20220722 - 20220728



High probability of rainfall to exceed 25mm in most parts of the country during the forecast period.

GEFS Week-2 Exceedance Prob. > 50mm
Valid: 20220722 - 20220728

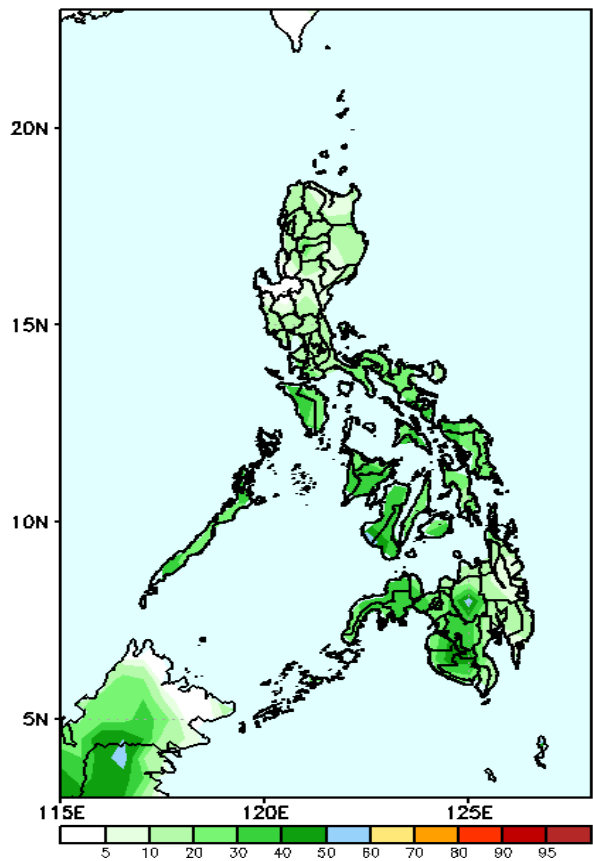


High probability of rainfall to exceed 50mm in most parts of Northern Luzon, some areas in Bicol region, Palawan and most parts of Visayas and Mindanao while less likely for the rest of Luzon during the forecast period.

Exceedance Probability > 100/150/200 mm

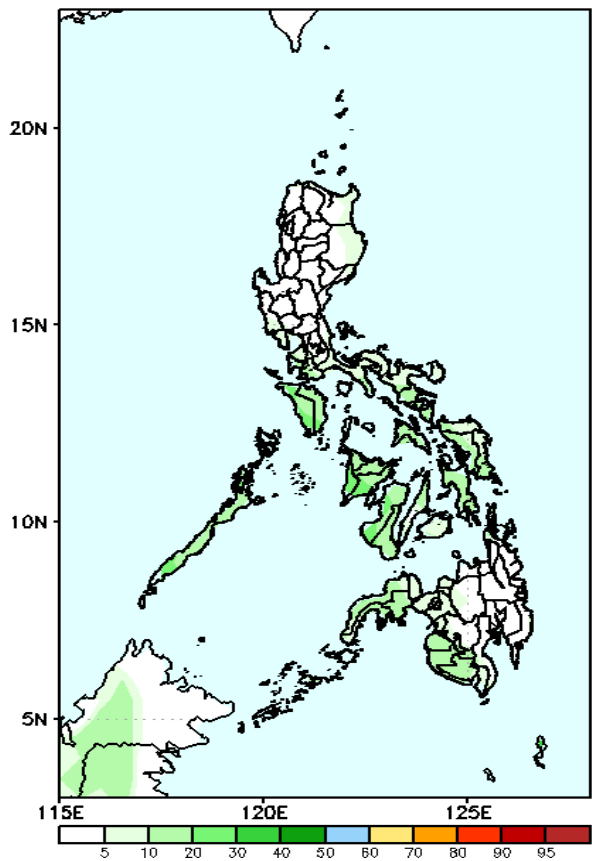
Week 2: Jul 22 - Jul 28, 2022

GEFS Week-2 Exceedance Prob. > 100mm
Valid: 20220722 - 20220728



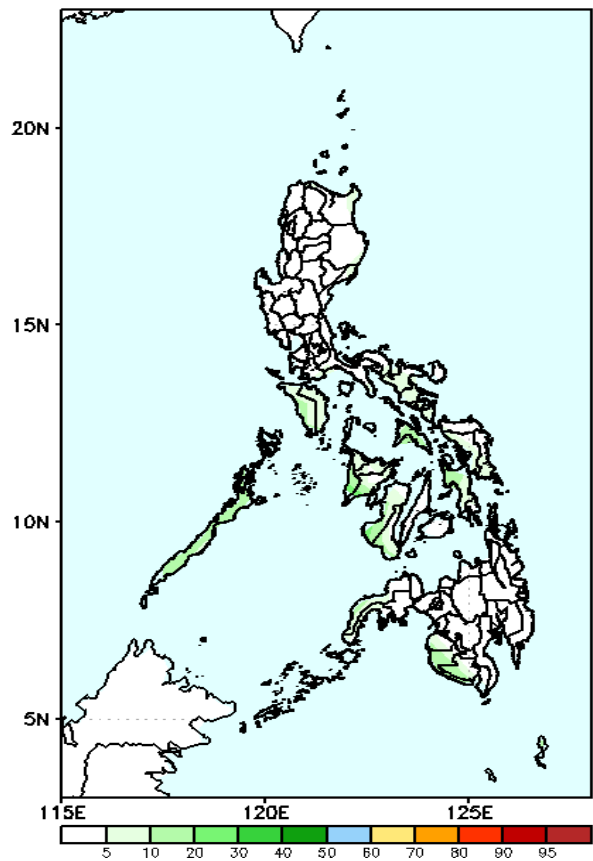
Low probability of rainfall to exceed 100mm in most parts of the country during the forecast period.

GEFS Week-2 Exceedance Prob. > 150mm
Valid: 20220722 - 20220728



Low probability of rainfall to exceed 150mm in most parts of the country during the forecast period.

GEFS Week-2 Exceedance Prob. > 200mm
Valid: 20220722 - 20220728



Low probability of rainfall to exceed 200mm in most parts of the country during the forecast period.